



# Acute kidney disease in hospitalized acute kidney injury patients

Ping Yan<sup>1</sup>, Xiang-Jie Duan<sup>1</sup>, Yu Liu<sup>1</sup>, Xi Wu<sup>1</sup>, Ning-Ya Zhang<sup>2</sup>, Fang Yuan<sup>1</sup>, Hao Tang<sup>3</sup>, Qian Liu<sup>1</sup>, Ying-Hao Deng<sup>1</sup>, Hong-Shen Wang<sup>1</sup>, Mei Wang<sup>1</sup> and Shao-bin Duan<sup>1</sup>

<sup>1</sup>Department of Nephrology, The Second Xiangya Hospital of Central South University; Hunan Key Laboratory of Kidney Disease and Blood Purification, Changsha, Hunan, China

<sup>2</sup>Information Center, The Second Xiangya Hospital of Central South University, Changsha, Hunan, China

<sup>3</sup>Nutrition and Exercise Physiology, Teachers College, Columbia University, New York, United States of America

## ABSTRACT

**Background.** Acute kidney injury (AKI) and chronic kidney disease (CKD) have become worldwide public health problems, but little information is known about the epidemiology of acute kidney disease (AKD)—a state in between AKI and CKD. We aimed to explore the incidence and outcomes of hospitalized patients with AKD after AKI, and investigate the prognostic value of AKD in predicting 30-day and one-year adverse outcomes.

**Methods.** A total of 2,556 hospitalized AKI patients were identified from three tertiary hospitals in China in 2015 and followed up for one year. AKD and AKD stage were defined according to the consensus report of the Acute Disease Quality Initiative 16 workgroup. Multivariable regression analyses adjusted for confounding variables were used to examine the association of AKD with adverse outcomes.

**Results.** AKD occurred in 45.4% (1161/2556) of all AKI patients, 14.5% (141/971) of AKI stage 1 patients, 44.6% (308/691) of AKI stage 2 patients and 79.6% (712/894) of AKI stage 3 patients. AKD stage 1 conferred a greater risk of Major Adverse Kidney Events within 30 days (MAKE30) (odds ratio [OR], 2.36; 95% confidence interval 95% CI [1.66–3.36]) than AKD stage 0 but the association only maintained in AKI stage 3 when patients were stratified by AKI stage. However, compared with AKD stage 0, AKD stage 2–3 was associated with higher risks of both MAKE30 and one-year chronic dialysis and mortality independent of the effects of AKI stage with OR being 31.35 (95% CI [23.42–41.98]) and 2.68 (95% CI [2.07–3.48]) respectively. The association between AKD stage and adverse outcomes in 30 days and one year was not significantly changed in critically ill and non-critically ill AKI patients. The results indicated that AKD is common among hospitalized AKI patients. AKD stage 2–3 provides additional information in predicting 30-day and one-year adverse outcomes over AKI stage. Enhanced follow-up of renal function of these patients may be warranted.

Submitted 20 January 2021

Accepted 13 April 2021

Published 24 May 2021

Corresponding author

Shao-bin Duan,  
duansb528@csu.edu.cn

Academic editor

Antonio Palazón-Bru

Additional Information and  
Declarations can be found on  
page 15

DOI 10.7717/peerj.11400

© Copyright  
2021 Yan et al.

Distributed under  
Creative Commons CC-BY 4.0

OPEN ACCESS

**Subjects** Epidemiology, Nephrology

**Keywords** Acute kidney injury, Kidney disease, Mortality, Renal dysfunction, Outcome

## INTRODUCTION

Acute kidney injury (AKI) is a common disorder worldwide which affects 7–18% of hospital inpatients and 30–70% of critically ill patients (*Lewington, Cerda & Mehta, 2013*).

The disorder is associated with considerable morbidity, mortality and high costs and brings great economic burden to the family and society (Hoste et al., 2018). An episode of AKI, even mild AKI can increase the risk of chronic kidney disease (CKD), end stage renal disease and premature death (Lameire et al., 2013; Mehta et al., 2015). Increased severity of AKI is also associated with a greater risk for death (Coca et al., 2009; Susantitaphong et al., 2013). However, few effective methods or therapies are available to reverse AKI in clinical practice (Kidney Disease: Improving Global Outcomes KDIGO, 2012; Basile et al., 2016; Yang et al., 2016). Herein, understanding the mechanism and clinical features of renal progression/recovery after an episode of AKI has gained great attention from researchers (Goldstein et al., 2014; He et al., 2017; Liu et al., 2019).

Recently, acute kidney disease (AKD) has been a rising concern. AKD is defined as persistent renal damage and/or renal dysfunction for a duration of 7 to 90 days after exposure to an AKI initiating event by the Acute Disease Quality Initiative (ADQI) 16 Workgroup (Chawla et al., 2017). It is proposed to define the course of disease after AKI and represents a subpopulation whose pathophysiological processes are ongoing. AKI and AKD reflect renal function status in different time periods during the disease process. Although studies have shown that AKD is associated with increased risks of mortality and renal function decline after hospital discharge (Hsu et al., 2020; James et al., 2019; Kofman et al., 2019; Matsuura et al., 2020; Mizuguchi et al., 2018), few targeted on patients with AKD after AKI, and the epidemiology of hospitalized patients with AKD after AKI is largely unknown. Whether AKD acts as an important intermediate stage for progression to renal dysfunction, chronic dialysis and mortality after AKI remains to be found.

To address this issue, we conducted a multi-center retrospective study of hospitalized AKI patients in China. We aimed to investigate the incidence and outcomes of hospitalized patients with AKD after AKI and to examine whether AKD adds additional prognostic information over AKI stage in predicting 30-day and one-year adverse outcomes.

## MATERIALS AND METHODS

### Study design, setting and population

The multi-center retrospective cohort study identified AKI patients from hospitalized patients aged more than 14 years in three affiliated hospitals of Central South University in China from January 1st, 2015 to December 31st, 2015. Study procedures were shown in Fig. 1. AKI was determined according to the 2012 Kidney Disease: Improving Global Outcomes Clinical Practice Guideline for Acute Kidney Injury (Kidney Disease: Improving Global Outcomes KDIGO, 2012) by the serum creatinine (SCr) level. Increase in SCr by  $\geq 0.3$  mg/dl within 48 h or increase in SCr to  $\geq 1.5$  times baseline within 7 days was used to identify AKI patients. Patients with CKD stage 5 (admission diagnosis including CKD stage 5, end stage renal disease or uremia), kidney transplantation (admission diagnosis including kidney transplantation or kidney transplant status), hospital stay <48 h, non-AKI or incomplete medical records were excluded. For patients with multiple hospitalizations, only the first hospitalization was included in the analysis. The Medical Ethics Committee of the Second Xiangya Hospital of Central South University approved the study protocol

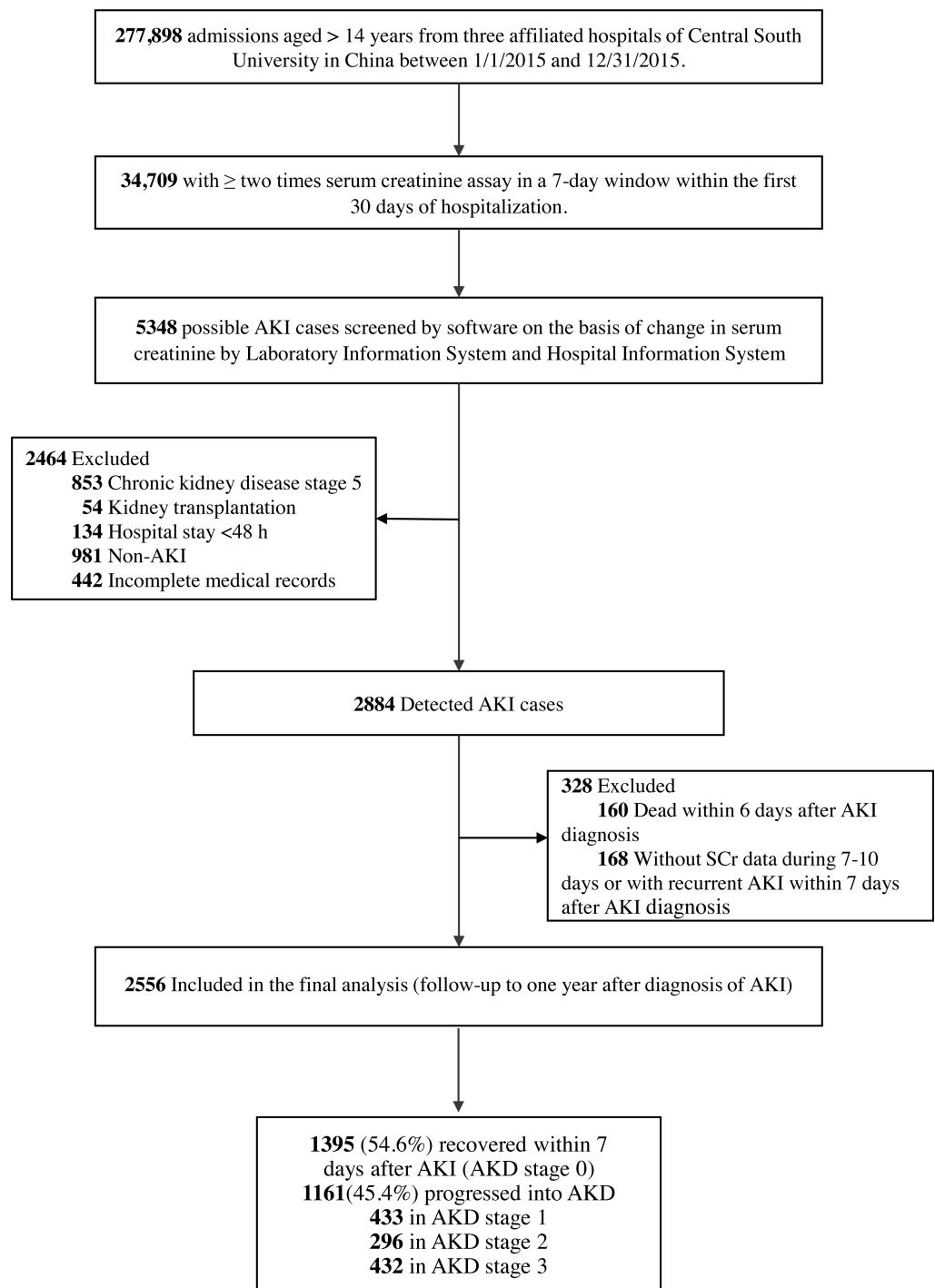
(2013-S061) and waived the patient consent. This project has been registered in Chinese Clinical Trial Registry (ChiCTR 1800019857).

### Identification of AKD

AKD was defined as a condition in which AKI stage 1 or greater persists for more than 6 days and less than 90 days after an AKI initiating event according to the consensus report of the ADQI 16 Workgroup ([Chawla et al., 2017](#)). AKD stage 1 was defined as SCr being 1.5–1.9 times of the baseline level, AKD stage 2 as SCr being 2.0–2.9 times of the baseline level, and AKD stage 3 as SCr being  $\geq 3.0$  times of the baseline level or ongoing need for renal replacement therapy. Patients with SCr  $< 1.5$  times of baseline level were categorized as AKD stage 0 (non-AKD group). AKD and AKD stage were identified based on the SCr level on the 7th day or the day nearest to the 7th day but not more than the 10th day after the diagnosis of AKI. Baseline SCr was defined as the mean SCr value that was available between 7–365 days prior to admission ([Siew et al., 2012](#)). For patients without a reliable baseline SCr before admission and with no evidence of baseline CKD, a back-estimation of the baseline SCr was performed using the Modification of Diet in Renal Disease study equation assuming that the baseline eGFR is 75 ml/min per 1.73 m<sup>2</sup> ([Bellomo et al., 2004](#)).

### Data collection and definition

Patients' information was extracted from Hospital Information System, Laboratory Information System and medical records, which included age, sex, clinical departments, comorbidities, diagnosis on admission and discharge, surgeries, invasive procedures, all-cause in-hospital death, as well as laboratory test results and time. Identification and classification of AKI (2012), AKI stage, AKI type, comorbidity, Charlson comorbidity index (CCI) ([Charlson et al., 1994](#)), organ failure ([Blanco et al., 2008](#)) and sepsis ([Bone et al., 1992](#)) were evaluated by trained nephrologists through reviewing medical records and laboratory data. AKI stage was defined according to the 2012 KDIGO guide for AKI ([Kidney Disease: Improving Global Outcomes KDIGO, 2012](#)) and the highest stage within the first 6 days of AKI diagnosis was used to determine the AKI stage. Community-acquired AKI was identified when patients met the KDIGO AKI definition according to SCr change on the first day of admission; hospital-acquired AKI was identified when patients who developed AKI did not meet community-acquired AKI criteria. Critically ill patients were identified as those who were admitted to intensive care units when AKI was diagnosed. Patients who could not be classified as critically ill patients were regarded as non-critically ill patients. Presence of comorbidities was determined by the diagnosis codes at admission and discharge. The burden of comorbidities was evaluated by CCI. Organ failure (cardiovascular system dysfunction, the arterial systolic blood pressure  $\leq 90$  mm Hg or mean arterial pressure  $\leq 70$  mm Hg or use of vasopressors; kidney dysfunction, urine output  $< 0.5$  ml/kg/h despite adequate blood volume, or creatinine  $> 1.9$  mg/dl; respiratory system dysfunction, hypoxemia with PaO<sub>2</sub>  $< 60$  mm Hg or mechanical ventilation; hematologic dysfunction, the platelet count  $< 80,000/\text{mm}^3$ ; liver dysfunction, bilirubin  $\geq 3$  mg/dl; nervous system dysfunction, use of sedative), and diagnosis of anemia (hemoglobin  $\leq 10$  g/dl), hypoalbuminemia (serum albumin  $< 30$  g/l), proteinuria (dipstick



**Figure 1** Study flow chart. AKI, acute kidney injury; AKD, acute kidney disease.

Full-size  DOI: 10.7717/peerj.11400/fig-1

urinalysis protein positive), and hyperuricemia (serum uric acid  $\geq 7.0$  mg/dl in men and 6.0 mg/dl in women) were determined by the data within seven days prior to AKD diagnosis. The worst result was used if there were multiple results for the same test. Data on hospital operation were determined by patients' medical orders information and collected within three days prior to AKD diagnosis.

### Endpoints and follow-up

The primary endpoint was the proportion of patients who met one or more criteria for Major Adverse Kidney Events within 30 days (MAKE30) (Kellum, Zarbock & Nadim, 2017; Semler et al., 2016) after diagnosis of AKI which consists of all-cause mortality (hereafter referred to as mortality), new receipt of renal replacement therapy, or persistent renal dysfunction (defined as the creatinine value  $\geq 200\%$  of the baseline value). All events were censored at hospital discharge or 30 days after the diagnosis of AKI, whichever came first. The second endpoint was the recipient of chronic dialysis or mortality one year after the diagnosis of AKI. MAKE30 and chronic dialysis in one year were identified through reviewing all relevant medical records (Hospital Information System, Laboratory Information System and out-patients records), making phone calls and sending messages. Dialysis performed during hospitalization was determined based on patients' medical orders information which included 'hemodialysis' or 'peritoneal dialysis'. Chronic dialysis was further determined by referring to the Chinese National Renal Data System. Death was confirmed through data linkage to the Chinese Center for Disease Control and Prevention cause-of-death reporting system which is a national administrative registry responsible for collection and management of death information from all provinces in China.

### Statistical analysis

Patients' baseline characteristics and outcomes were compared between AKD stages using One-way ANOVA test or Kruskal-Wallis test for continuous variables and chi-square test for categorical variables as appropriate. Multiple comparisons between AKD stages were made by Student-Newman-Keuls test for continuous variables and Scheffe's confidence interval method for categorical variables as appropriate. Multivariable logistic regression analysis was used to estimate the impact of AKD stage on persistent renal dysfunction and new receipt of renal replacement therapy in 30 days, MAKE30, one-year chronic dialysis as well as composite adverse outcomes in one year. Cox proportional hazard regression model was used to estimate the hazard ratio of AKD on 30-day and one-year mortality. Variables that were considered clinically relevant or associated with outcomes were adjusted in the multivariable models. Proportional hazards assumption was assessed by the curves of  $\log[-\log S(t)]$  to t test for each covariable. Multivariable logistic regression analysis was used to determine the predictors of AKD stage 2–3 and establish the risk prediction model. Baseline variables that were considered clinically relevant or that showed a univariable relationship with outcome were entered into the model and selected by the forward selection method. Discrimination and calibration of the model were tested by area under the receiver operating characteristic curve (AUROC) and Hosmer and Lemeshow test.

Statistical analyses were performed using SPSS 18.0 (IBM Corporation).  $P < 0.05$  was considered statistically significant.

## RESULTS

### Incidence of AKD

The overall incidences of AKI and AKD in hospitalized patients were 8.31% (2884/34709) and 3.34% (1161/34709) respectively. 2,556 AKI patients meeting the inclusion criteria were enrolled in our analysis. AKD occurred in 45.4% (1161/2556) of all AKI patients, 14.5% (141/971) of AKI stage 1 patients, 44.6% (308/691) of AKI stage 2 patients and 79.6% (712/894) of AKI stage 3 patients. Characteristics of the study population stratified by AKD stages were presented in [Table 1](#). The prevalences of AKD stage 1 and stage 2–3 were 16.9% and 28.5% respectively. AKD stage 2–3 tended to occur in patients who were older and accompanied with more comorbidities. A larger percentage of patients with AKI stage 3, intrinsic renal AKI as well as mechanical ventilation were also observed in AKD stage 2–3.

### Outcomes of AKD patients

Outcomes of patients stratified by AKD stage were provided in [Table 2](#). Kaplan–Meier survival curves for 30-day and one-year mortality among AKD stages were shown in [Fig. 2](#). During the one-year follow-up, 26.8% (684/2556) of patients developed the composite endpoints of MAKE30, of whom 13.5% (92/684) came from the AKD stage 0 group, 11.0% (75/684) from the AKD stage 1 group and 75.6% (517/684) from the AKD stage 2–3 group. 19.0% (486/2556) of patients developed the composite endpoints of adverse outcomes (chronic dialysis and mortality) in one year, with 35.2% (171/486) from the AKD stage 0 group, 15.0% (73/486) from the AKD stage 1 group and 49.8% (242/486) from the AKD stage 2–3 group. A stepwise increase in the incidence of MAKE30 and one-year adverse outcomes was observed as the AKD stage got higher. Compared with AKD stage 0 and 1, patients with AKD stage 2–3 consistently showed significantly higher incidences of developing all adverse outcomes in 30 days and one year. AKD stage 1 only had higher incidences in persistent renal dysfunction and mortality in 30 days than AKD stage 0 ([Table 2](#)).

Association between AKD stage and 30-day as well as one-year adverse outcomes was shown in [Table 3](#). Fully adjusted multivariable regression analysis indicated that AKD stage 1 mainly showed an increased risk of persistent renal function in 30 days, while AKD stage 2–3 conferred remarkably higher risks in receiving renal replacement therapy, developing persistent renal dysfunction and mortality in 30 days along with chronic dialysis and mortality in one year. OR/HR for covariables adjusted in the multivariable regression model were shown in [Tables S1–S7](#).

### Association between AKI stage, AKD stage and adverse outcomes in 30 days and one year

To rule out the impact of AKI stage on the association between AKD and 30-day as well as one-year adverse outcomes, the incidences of MAKE30 and one-year adverse outcomes in

**Table 1** Characteristics of study population stratified by AKD stages.

Variables	AKD stage 0 <i>n</i> = 1395 (54.6%)	AKD stage 1 <i>n</i> = 433 (16.9%)	AKD stage 2–3 <i>n</i> = 728 (28.5%)	<i>P</i> value*
Age(years)	53.3 ± 16.0	54.4 ± 17.0	56.0 ± 16.9 <sup>a</sup>	0.002
Age group,				<0.001
15–64 years	1033 (74.1%)	300 (69.3%)	480 (65.9%) <sup>a</sup>	
≥ 65 years	362 (25.9%)	133 (30.7%)	248 (34.1%) <sup>a</sup>	
Male	847 (60.7%)	294 (67.9%) <sup>a</sup>	462 (63.5%)	0.023
ICU admission	437 (31.3%)	130 (30.0%)	254 (34.9%)	0.147
AKI stage <sup>b,c</sup>				<0.001
1	830 (59.5%)	102 (23.6%)	39 (5.4%)	
2	383 (27.5%)	148 (34.2%)	160 (22.0%)	
3	182 (13.0%)	183 (42.3%)	529 (72.7%)	
AKI type				<0.001
CA-AKI	525 (37.6%)	239 (55.2%) <sup>a</sup>	345 (47.4%) <sup>a,d</sup>	
HA-AKI	870 (62.4%)	194 (44.8%) <sup>a</sup>	383 (52.6%) <sup>a,d</sup>	
AKI classification <sup>b</sup>				<0.001
Pre-renal	996 (71.4%)	250 (57.7%)	416 (57.1%)	
Intrinsic-renal	213 (15.3%)	124 (28.6%)	224 (30.8%)	
Post-renal	85 (3.3%)	35 (8.1%)	50 (6.9%)	
Unclassified	101 (7.2%)	24 (5.5%)	38 (5.2%)	
Comorbidity				
Hypertension	449 (32.2%)	151 (34.9%)	284 (39.0%) <sup>a</sup>	0.007
Diabetes	251 (18.0%)	86 (19.9%)	148 (20.3%)	0.374
CKD	37 (2.7%)	33 (7.6%) <sup>a</sup>	34 (4.7%)	<0.001
Myocardial infarction	35 (2.5%)	22 (5.1%)	39 (5.4%) <sup>b</sup>	0.001
Congestive heart failure	197 (14.1%)	81 (18.7%)	144 (19.8%) <sup>b</sup>	0.002
Cerebrovascular disease	186 (13.3%)	56 (12.9%)	90 (12.4%)	0.819
Chronic liver disease	327 (23.4%)	107 (24.7%)	221 (30.4%) <sup>a</sup>	0.002
Cancer	402 (28.8%)	85 (19.6%) <sup>a</sup>	156 (21.4%) <sup>a</sup>	<0.001
Sepsis	97 (7.0%)	43 (9.9%)	108 (14.8%) <sup>a</sup>	<0.001
CCI (≥2)	764 (54.8%)	240 (55.4%)	448 (61.5%) <sup>a</sup>	0.009
Organ failure (≥2)	271 (19.4%)	131 (30.3%) <sup>a</sup>	310 (42.6%) <sup>a,d</sup>	<0.001
Laboratory data				
Anemia,	353 (25.3%)	150 (34.6%) <sup>a</sup>	293 (40.2%) <sup>a</sup>	<0.001
Hypoalbuminemia	283 (20.3%)	137 (31.6%) <sup>a</sup>	267 (36.7%) <sup>a</sup>	<0.001
Proteinuria	142 (10.3%)	92 (21.4%) <sup>a</sup>	165 (23.0%) <sup>a</sup>	<0.001
Hyperuricemia	459 (32.9%)	233 (53.8%) <sup>a</sup>	435 (59.8%) <sup>a</sup>	<0.001
Baseline SCr (μmol/L)	73.6 ± 24.9	89.6 ± 34.5 <sup>a</sup>	85.2 ± 25.6 <sup>a,d</sup>	<0.001

(continued on next page)



Table 1 (continued)

Variables	AKD stage 0 <i>n</i> = 1395 (54.6%)	AKD stage 1 <i>n</i> = 433 (16.9%)	AKD stage 2–3 <i>n</i> = 728 (28.5%)	<i>P</i> value*
Hospital operation				
Cardiovascular Surgery	105 (7.5%)	26 (6.0%)	55 (7.6%)	0.535
Mechanical Ventilation	213 (15.3%)	93 (21.5%) <sup>a</sup>	210 (28.8%) <sup>a,d</sup>	<0.001
Hospital stay (d)	15 (9–22)	16 (10–26) <sup>a</sup>	15 (10–25) <sup>a</sup>	<0.001

**Notes.**

AKD, acute kidney disease; ICU, intensive care unit; AKI, acute kidney injury; CA-AKI, community-acquired acute kidney injury; HA-AKI, hospital-acquired acute kidney injury; CKD, chronic kidney disease; CCI, Charlson comorbidity index; SCr, serum creatinine.

\*Comparison was made among AKD stage 0, 1 and 2–3.

<sup>a</sup>*p* < 0.05 compared with AKD stage 0.

<sup>b</sup>Overall *P* < 0.05 compared with AKD stage 0 in both AKD stage 1 and AKD stage 2–3.

<sup>c</sup>Overall *P* < 0.05 between AKD stage 1 and AKD stage 2–3.

<sup>d</sup>*p* < 0.05 compared with AKD stage 1.

Table 2 Outcomes of hospitalized AKI patients stratified by AKD stage.

Outcomes	All patients <i>N</i> = 2556 <i>n</i> (%)	AKD stage 0 <i>N</i> = 1395 <i>n</i> (%)	AKD stage 1 <i>N</i> = 433 <i>n</i> (%)	AKD stage 2–3 <i>N</i> = 728 <i>n</i> (%)	<i>P</i> value*
Major Adverse Kidney Events within 30 days					
PRD	561 (21.9%)	19 (1.4%)	40 (9.2%) <sup>a</sup>	502 (69.0%) <sup>a,b</sup>	<0.001
New RRT	66 (2.6%)	3 (0.2%)	6 (1.4%)	57 (7.8%) <sup>a,b</sup>	<0.001
Mortality	260 (10.2%)	72 (5.2%)	41 (9.5%) <sup>a</sup>	147 (20.2%) <sup>a,b</sup>	<0.001
Total	684 (26.8%)	92 (6.6%)	75 (17.3%) <sup>a</sup>	517 (71.0%) <sup>a,b</sup>	<0.001
One-year adverse outcomes					
Chronic dialysis	26 (1.1%)	4 (0.3%)	1 (0.2%)	21 (3.0%) <sup>a,b</sup>	<0.001
Mortality	461 (18.0%)	167 (12.0%)	72 (16.6%)	222 (30.5%) <sup>a,b</sup>	<0.001
Total	486 (19.0%)	171 (12.3%)	73 (16.9%)	242 (33.2%) <sup>a,b</sup>	<0.001

**Notes.**

AKI, acute kidney injury; AKD, acute kidney disease; PRD, persistent renal dysfunction; RRT, renal replacement therapy.

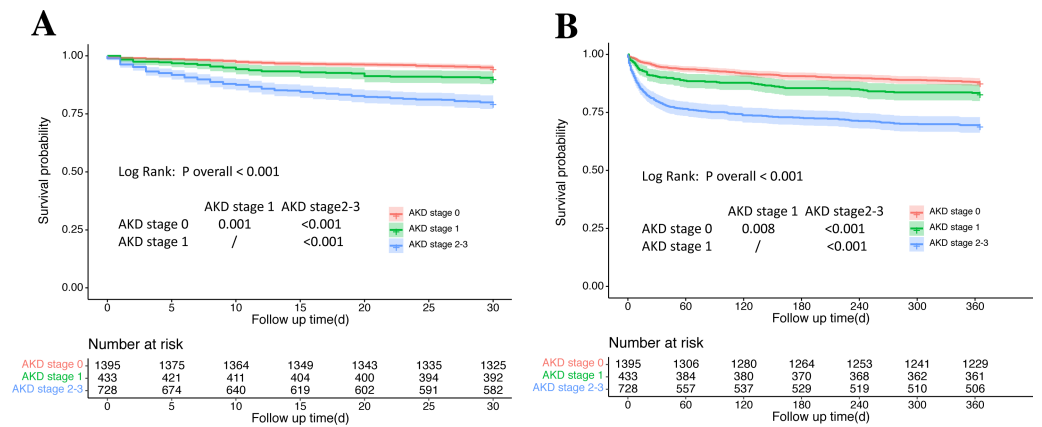
\*Comparison was made among AKD stage 0, 1 and 2–3.

<sup>a</sup>*P* < 0.05 compared with AKD stage 0.

<sup>b</sup>*P* < 0.05 compared with AKD stage 1.

patients stratified by both AKI stage and AKD stage were analyzed and shown in Fig. 3. In each stratum of AKI, the incidences of MAKE30 and one-year adverse outcomes went up as AKD stage got higher and increased remarkably from AKD stage 1 to AKD stage 2–3. When stratified by AKD stage, the occurrence of MAKE30 increased with the increase of AKI stage while the occurrence of one-year adverse outcomes did not alter much among AKI stages. Notably, the incidences of MAKE30 and one-year adverse outcomes in patients with the lowest AKI stage and severe AKD (AKD stage 2–3) were nearly two times higher than those in patients with the most severe AKI and AKD stage 0 (MAKE30:20.50% vs 10.44%; one-year adverse outcomes: 33.33% vs 14.84%). Multivariable logistic regression analysis stratified by AKI stage showed that AKD stage 2–3 remained significantly higher risks in developing MAKE30 and one-year adverse outcomes among each stratum of AKI;





**Figure 2** Kaplan–Meier survival curves for 30-day and one-year mortality among AKD stages. (A) Kaplan–Meier survival curves for 30-day mortality among AKD stages. (B) Kaplan–Meier survival curves for one-year mortality among AKD stages. AKD, acute kidney disease.

Full-size [DOI: 10.7717/peerj.11400/fig-2](https://doi.org/10.7717/peerj.11400/fig-2)

**Table 3** Multivariable regression analysis of AKD stage on 30-day and one-year adverse outcomes.

Outcomes	AKD stage 1 OR/HR (95%CI)		AKD stage 2–3 OR/HR (95%CI)	
	Unadjusted <sup>a</sup>	Adjusted <sup>a</sup>	Unadjusted <sup>a</sup>	Adjusted <sup>a</sup>
<b>30-day adverse outcomes</b>				
PRD <sup>b</sup>	7.37 (4.22–12.87)	6.13 (3.46–10.86)	160.86 (99.62–259.76)	143.33 (87.62–234.47)
New receipt of RRT <sup>b</sup>	6.52 (1.62–26.18)	4.02 (0.98–16.47)	39.42 (12.30–126.32)	18.86 (5.74–62.01)
Mortality <sup>c</sup>	1.88 (1.28–2.76)	1.47 (0.99–2.18)	4.27 (3.22–5.66)	2.52 (1.86–3.42)
MAKE 30 <sup>b</sup>	2.97 (2.14–4.11)	2.36 (1.66–3.36)	34.70 (26.62–45.24)	31.35 (23.42–41.98)
<b>One-year adverse outcomes</b>				
Chronic dialysis <sup>b</sup>	0.82 (0.09–7.33)	0.41 (0.04–4.11)	10.42 (3.56–30.48)	9.85 (2.85–34.10)
Mortality <sup>c</sup>	1.44 (1.09–1.90)	1.24 (0.93–1.65)	2.94 (2.40–3.59)	2.08 (1.67–2.59)
Chronic dialysis and mortality <sup>b</sup>	1.45 (1.08–1.96)	1.21 (0.87–1.69)	3.56 (2.85–4.45)	2.68 (2.07–3.48)

**Notes.**

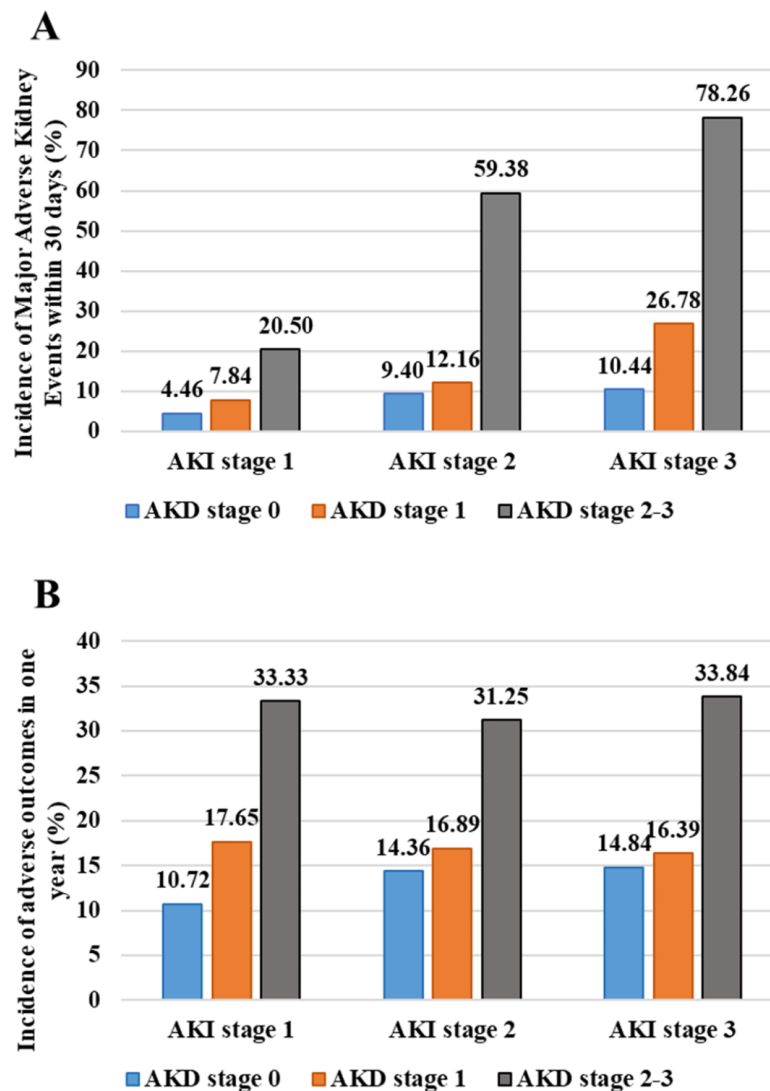
AKD, acute kidney disease; OR, odds ratio; HR, hazard ratio; PRD, persistent renal dysfunction; RRT, renal replacement therapy; MAKE 30, Major Adverse Kidney Events within 30 days.

<sup>a</sup>AKD stage 0 was considered as the reference group.

<sup>b</sup>Multivariable logistic regression analysis was performed.

<sup>c</sup>Multivariable Cox regression analysis was performed.

however, AKD stage 1 almost conferred no extra risk in MAKE30 and one-year adverse outcomes than AKD stage 0 (Table 4).



**Figure 3** Incidences of Major Adverse Kidney Events within 30 days and one-year adverse outcomes in patients stratified by AKI stage and AKD stage. (A) Incidences of Major Adverse Kidney Events within 30 days; (B) Incidences of one-year adverse outcomes. AKI, acute kidney injury; AKD, acute kidney disease.

Full-size [DOI: 10.7717/peerj.11400/fig-3](https://doi.org/10.7717/peerj.11400/fig-3)

### Prediction of AKD stage 2–3

Multivariable logistic regression analysis showed that AKI stage, AKI type, AKI classification, proteinuria, anemia, hyperuricemia, organ failure as well as CCI were independent risk factors for the development of AKD stage 2–3 (Fig. 4). AKI stage was a major risk factor for AKD stage 2–3 with the highest odds ratio and predicted it in graded manner as the odds ratio got higher with the increase of AKI stage. This 8-variable model showed good discrimination and calibration in predicting AKD stage 2–3 with the AUROC being 0.85 (95% CI [0.83–0.87]) and the *P* value of the Hosmer and Lemeshow test being 0.78.

**Table 4** Unadjusted and adjusted odds ratio (95% confidence interval) of MAKE 30 and one-year adverse outcomes associated with AKD stage stratified by AKI stage.

	AKI stage 1	AKI stage 2	AKI stage 3
<b>MAKE30</b>			
<b>Unadjusted</b>			
AKD stage 0	1.00 (reference)	1.00 (reference)	1.00 (reference)
AKD stage 1	1.82 (0.83–4.03)	1.34 (0.73–2.43)	3.14 (1.76–5.58)
AKD stage 2–3	5.53 (2.38–12.87)	14.09 (8.84–22.45)	30.88 (18.40–51.85)
<b>Adjusted</b>			
AKD stage 0	1.00 (reference)	1.00 (reference)	1.00 (reference)
AKD stage 1	1.61 (0.66–3.94)	1.25 (0.65–2.39)	2.69 (1.46–4.97)
AKD stage 2–3	4.28 (1.39–13.16)	16.34 (9.68–27.59)	31.15 (17.98–53.96)
<b>One-year adverse outcomes</b>			
<b>Unadjusted</b>			
AKD stage 0	1.00 (reference)	1.00 (reference)	1.00 (reference)
AKD stage 1	1.78 (1.03–3.11)	1.21 (0.72–2.03)	1.13 (0.64–1.98)
AKD stage 2–3	4.16 (2.07–8.39)	2.71 (1.75–4.21)	2.94 (1.88–4.59)
<b>Adjusted</b>			
AKD stage 0	1.00 (reference)	1.00 (reference)	1.00 (reference)
AKD stage 1	1.54 (0.83–2.83)	1.13 (0.62–2.03)	0.95 (0.51–1.78)
AKD stage 2–3	3.14 (1.34–7.33)	2.28 (1.38–3.77)	2.27 (1.39–3.73)

**Notes.**

MAKE30, Major Adverse Kidney Events within 30 days; AKD, acute kidney disease; AKI, acute kidney injury. Multivariable logistic regression analysis was performed with adjustment for age, sex, hypertension, diabetes mellitus, cardiac infarction, congestive heart failure, chronic liver disease, chronic kidney disease, cerebrovascular disease, cancer, sepsis, organ failure, Charlson comorbidity index, anemia, proteinuria, hyperuricemia, hypoalbuminemia, cardiovascular surgery and mechanical ventilation.

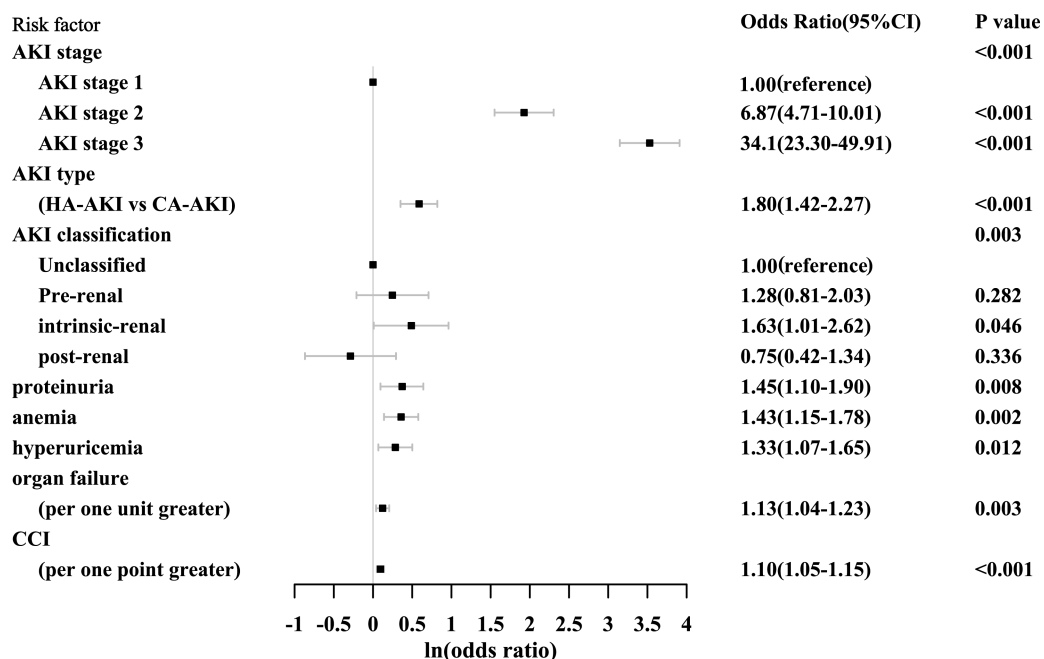
**Sensitivity analysis**

The association between AKD stage and adverse outcomes in 30 days and one year was further examined in critically ill and non-critically ill patients. The results were not significantly changed as AKD stage 2–3 was similarly associated with increased risk of developing adverse outcomes in 30 days and one year both in the critically ill and non-critically ill, while the association of AKD stage 1 and one-year adverse outcomes was not seen in critically ill patients or non-critically ill patients (Tables S8, S9).

**DISCUSSION**

In our multi-center retrospective study, we found that AKD was commonly seen among hospitalized AKI patients as 45.4% of AKI patients would progress into AKD. AKD acted as an important intermediate stage between AKI and adverse outcomes in 30 days and one year. AKD stage 2–3 was associated with increased risk of 30-day and one-year adverse outcomes independent from AKI stage and the association did not alter much in critically ill and non-critically ill AKI patients.

Few studies so far have targeted on patients with AKD after AKI. The concept of AKD was first proposed by the KDIGO AKI workgroup in 2012, which was defined as any condition that impacts kidney function or structure lasting <3 months including AKI *Kidney Disease:*



**Figure 4** Risk factors for the development of AKD stage 2–3. AKD, acute kidney disease; CI, confidence interval; AKI, acute kidney injury; HA-AKI, hospital-acquired acute kidney injury; CA-AKI, community-acquired acute kidney injury; CCI, Charlson comorbidity index.

Full-size DOI: 10.7717/peerj.11400/fig-4

*Improving Global Outcomes KDIGO, 2012*. But in 2017, the ADQI workgroup proposed a new definition of AKD aiming to define the course of disease after AKI among patients in whom the renal pathophysiologic processes are ongoing. This new definition separates AKI and AKD as they reflect the severity of patient' renal function injury within the first 6 days and 7-90 days after an AKI initiating event respectively, which is able to show the dynamic nature of renal function and natural course of the disease. Most studies on AKD so far took the definition by 2012 KDIGO AKI workgroup and targeted on AKD patients with or without AKI (Fujii et al., 2014; Hsu et al., 2020; James et al., 2019; Mima et al., 2019; Patimarattananan et al., 2020). The studies found that AKD patients not meeting the AKI criteria were associated with higher risks of developing new CKD, end stage kidney disease and death compared with patients without kidney injury (Fujii et al., 2014; Hsu et al., 2020; James et al., 2019). Researches adopting the 2017 ADQI workgroup definition and focusing on AKD patients after AKI have been scarce (Kofman et al., 2019; Matsuura et al., 2020; Peerapornratana et al., 2020). Kofman's study (Kofman et al., 2019) enrolled 225 consecutive ST elevation myocardial infarction patients with AKI after percutaneous coronary intervention, and found that AKD was developed in 36% of the patients and associated with higher 90-day and long-term mortality. Other studies showed that AKD occurred in 47.1% of patients with AKI after cardiac surgery (Matsuura et al., 2020) and 26.9% of patients with septic shock and stage 2 or 3 AKI (Peerapornratana et al., 2020). But all these studies only recruited patients from particular clinical settings and had relatively small samples. And none of these studies included both renal dysfunction and hard clinical

outcomes in the endpoints. Our study was the largest study so far to investigate the incidence and outcomes of patients with AKD after AKI. We enrolled all AKI patients admitted to three hospitals which can reduce the selection bias and make the population more representative. We employed MAKE30 which included two renal-specific events and mortality as our primary endpoints, which contained more clinical significance and can capture a greater percentage of patients with a meaningful poor outcome. The absence of MAKE30 is also an assessment of renal disability-free survival as well as an important goal for all patients and medical staff (*Billings & Shaw, 2014*).

Our study confirmed the important clinical significance of AKD. AKD is commonly seen in hospitalized AKI patients and represents a critical intermediate stage between AKI and adverse short- and long-term outcomes. AKD occurred in 45.4% of our study population which was consistent with previous finding (*Matsuura et al., 2020*). 86.5% of patients who developed MAKE30 and 64.8% of patients who developed chronic dialysis and mortality in one year were from AKD group. Multivariable regression analysis also indicated that AKD, especially AKD stage 2–3, was a strong predictor for the occurrence of MAKE30. AKD stage 2–3 carried more than 30 times the risk of developing MAKE30 and still showed 2.7 times higher risk in developing chronic dialysis and mortality in one year than non-AKD.

As studies have consistently shown that an episode of AKI was associated with increased risks for requirement of renal replacement therapy, subsequent CKD and mortality (*Bucaloiu et al., 2012; Cheng et al., 2020; Hoste et al., 2018; Linder et al., 2014*), whether the association between AKD and adverse outcomes in 30 days and one year was resulted from the impact of AKI stage was unclear. Therefore, we stratified the patients by both AKI stage and AKD stage. We found that the differences in the incidences of one-year adverse outcomes among AKI stages almost disappeared when patients were stratified by AKD stage. But when stratified by AKI stage, the incidences of one-year adverse outcomes kept increasing as AKD stage went higher, especially when AKD stage rose from stage 1 to stage 2–3. Notably, the incidences of MAKE30 or one-year adverse outcomes in patients with mild AKI and severe AKD (AKD stage 2–3) were nearly twice as high as those in patients with severe AKI without AKD. Moreover, AKD stage 2–3 was consistently and independently associated with increased risks of MAKE30 and one-year adverse outcomes in the adjusted multivariable regression models when controlled for AKI stage. Our findings extended the work on AKI and showed that AKD stage 2–3 could provide extra prognostic information over AKI stage which can help improve identification of patients with increased risk of adverse outcomes and raise awareness of AKD in clinical practice.

The findings in the present study can promote understanding of the pathophysiological changes of AKD. Clinically, we found AKI stage conferred an incremental and major risk of progressing into AKD stage 2–3 in a graded manner. Our result was supported by a previous study which demonstrated that patients with AKI stage 1, 2 and 3 had 2.3, 9.4 and 22.9 times higher risks of developing AKD (defined as doubling of creatinine 2–4 weeks after cardiac surgery) (*Mizuguchi et al., 2018*). Intrinsic renal injury and proteinuria were also independent risk factors for AKD stage 2–3. Proteinuria is regarded as a sign of renal structural damage while intrinsic AKI is usually characterized by tubular epithelial cell death. The results indicated that the occurrence of AKD stage 2–3 is the reflection of

relatively severe renal injury and underlying renal structural damage. Pathophysiologically, progression from AKI depends on the balance of adaptive and maladaptive repair and persistence in renal injury results directly or secondly from maladaptive repair process (Basile et al., 2016). Several pathophysiologic processes including a reduction in capillary density (Basile et al., 2001; Kramann, Tanaka & Humphreys, 2014) and an expansion of interstitial fibroblasts and myofibroblasts (Venkatachalam et al., 2010) as well as some signaling pathways (Shu et al., 2019; Tang et al., 2019) activated during maladaptive repair which would promote interstitial fibrosis and lead to the development and progression of CKD and adverse outcomes. Taken together, the occurrence of severe AKD is the combined results from renal structural injury and responsive repair while the severity of renal injury can be the trigger of maladaptive repair process. AKD represents the endogenous renal repair process and an important transition period connecting AKI and adverse outcomes. Therefore, balancing the adaptive and maladaptive repair can be the target in preventing AKD occurrence and improving prognosis of AKI patients. Further studies are still needed to elucidate the mechanism of AKD to help find out possible intervening measures in an attempt to stop renal progression and facilitate recovery.

Our study also has some limitations. First, the possibility of misclassification in identifying exposures and associated variables in retrospective analysis along with unmeasured variables could potentially confound the relationship between AKD and outcomes. Second, the enrolled patients were restricted to academic hospitals, which might affect the general representativeness of the study population. Further studies performed in non-academic hospitals and other countries are needed to validate our findings. Third, only SCr value was used to identify AKI patients as the urinary data was unavailable for most patients. The results may have differed if urine output was included in identifying AKI patients. Finally, the data from after discharge to the time of death or study endpoint like patients' blood pressure control and nephrotoxic drugs use are unavailable, therefore the effects of other insults and treatment on patients' outcomes are unknown.

## CONCLUSION

AKD is common among AKI patients. AKD stage 2–3 is independently associated with increased risks of 30-day and one-year adverse outcomes and adds additional prognostic information over AKI stage. Awareness of potential risks associated with AKD stage 2–3 may help improve outcomes through careful monitoring and timely intervention.

## ACKNOWLEDGEMENTS

We thank professor Ren-He Yu (Xiangya School of Public Health, Central South University, China) for providing guidance on statistical analysis.

## ADDITIONAL INFORMATION AND DECLARATIONS

### Funding

This work was supported by the National Natural Science Foundation of China (No. 81873607, No. 81570618), the Development and Reform Commission of Hunan Province (2014-658), the Scientific Foundation of Hunan Province, China (S2013F1022), and the Clinical Medical Technology Innovation Guide Project of Hunan Province (2017SK50117). The funders had no role in study design, data collection and analysis, decision to publish, or preparation of the manuscript.

### Grant Disclosures

The following grant information was disclosed by the authors:

National Natural Science Foundation of China: No. 81873607, 81570618.

Development and Reform Commission of Hunan Province: 2014-658.

Scientific Foundation of Hunan Province, China: S2013F1022.

Clinical Medical Technology Innovation Guide Project of Hunan Province: 2017SK50117.

### Competing Interests

The authors declare there are no competing interests.

### Author Contributions

- Ping Yan conceived and designed the experiments, performed the experiments, analyzed the data, prepared figures and/or tables, authored or reviewed drafts of the paper, and approved the final draft.
- Xiang-Jie Duan conceived and designed the experiments, performed the experiments, analyzed the data, prepared figures and/or tables, authored or reviewed drafts of the paper, and approved the final draft.
- Yu Liu analyzed the data, authored or reviewed drafts of the paper, and approved the final draft.
- Xi Wu performed the experiments, authored or reviewed drafts of the paper, and approved the final draft.
- Ning-Ya Zhang analyzed the data, authored or reviewed drafts of the paper, and approved the final draft.
- Fang Yuan analyzed the data, authored or reviewed drafts of the paper, and approved the final draft.
- Hao Tang analyzed the data, authored or reviewed drafts of the paper, and approved the final draft.
- Qian Liu performed the experiments, authored or reviewed drafts of the paper, and approved the final draft.
- Ying-Hao Deng performed the experiments, authored or reviewed drafts of the paper, and approved the final draft.
- Hong-Shen Wang performed the experiments, authored or reviewed drafts of the paper, and approved the final draft.



- Mei Wang performed the experiments, authored or reviewed drafts of the paper, and approved the final draft.
- Shao-bin Duan conceived and designed the experiments, authored or reviewed drafts of the paper, and approved the final draft.

### Human Ethics

The following information was supplied relating to ethical approvals (i.e., approving body and any reference numbers):

The Medical Ethics Committee of the Second Xiangya Hospital of Central South University approved the study protocol (2013-S061) and waived the patient consent. This project has been registered in Chinese Clinical Trial Registry.

### Data Availability

The following information was supplied regarding data availability:

The raw data are available in the [Supplementary File](#).

### Supplemental Information

Supplemental information for this article can be found online at <http://dx.doi.org/10.7717/peerj.11400#supplemental-information>.

## REFERENCES

- Basile DP, Bonventre JV, Mehta R, Nangaku M, Unwin R, Rosner MH, Kellum JA, Ronco C, Group AXW. 2016.** Progression after AKI: understanding maladaptive repair processes to predict and identify therapeutic treatments. *Journal of the American Society of Nephrology* 27:687–697 DOI 10.1681/ASN.2015030309.
- Basile DP, Donohoe D, Roethe K, Osborn JL. 2001.** Renal ischemic injury results in permanent damage to peritubular capillaries and influences long-term function. *American Journal of Physiology-Renal Physiology* 281:F887–899 DOI 10.1152/ajprenal.2001.281.5.F887.
- Bellomo R, Ronco C, Kellum JA, Mehta RL, Palevsky P, Acute Dialysis Quality Initiative w. 2004.** Acute renal failure - definition, outcome measures, animal models, fluid therapy and information technology needs: the Second International Consensus Conference of the Acute Dialysis Quality Initiative (ADQI) Group. *Critical Care* 8:R204–R212 DOI 10.1186/cc2872.
- Billings FTT, Shaw AD. 2014.** Clinical trial endpoints in acute kidney injury. *Nephron Clinical Practice* 127:89–93 DOI 10.1159/000363725.
- Blanco J, Muriel-Bombin A, Sagredo V, Taboada F, Gandia F, Tamayo L, Collado J, Garcia-Labattut A, Carriedo D, Valledor M, De Frutos M, Lopez MJ, Caballero A, Guerra J, Alvarez B, Mayo A, Villar J, Grupo de Estudios y Analisis en Cuidados I. 2008.** Incidence, organ dysfunction and mortality in severe sepsis: a Spanish multicentre study. *Critical Care* 12:R158 DOI 10.1186/cc7157.
- Bone RC, Balk RA, Cerra FB, Dellinger RP, Fein AM, Knaus WA, Schein RM, Sibbald WJ. 1992.** Definitions for sepsis and organ failure and guidelines for the use of

- innovative therapies in sepsis, The ACCP/SCCM Consensus Conference Committee. American College of Chest Physicians/Society of Critical Care Medicine. *Chest* 101:1644–1655 DOI [10.1378/chest.101.6.1644](https://doi.org/10.1378/chest.101.6.1644).
- Bucaloiu ID, Kirchner HL, Norfolk ER, Hartle 2nd JE, Perkins RM. 2012.** Increased risk of death and de novo chronic kidney disease following reversible acute kidney injury. *Kidney International* 81:477–485 DOI [10.1038/ki.2011.405](https://doi.org/10.1038/ki.2011.405).
- Charlson M, Szatrowski TP, Peterson J, Gold J. 1994.** Validation of a combined comorbidity index. *Journal of Clinical Epidemiology* 47:1245–1251 DOI [10.1016/0895-4356\(94\)90129-5](https://doi.org/10.1016/0895-4356(94)90129-5).
- Chawla LS, Bellomo R, Bihorac A, Goldstein SL, Siew ED, Bagshaw SM, Bittleman D, Cruz D, Endre Z, Fitzgerald RL, Forni L, Kane-Gill SL, Hoste E, Koyner J, Liu KD, Macedo E, Mehta R, Murray P, Nadim M, Ostermann M, Palevsky PM, Pannu N, Rosner M, Wald R, Zarbock A, Ronco C, Kellum JA, Acute Disease Quality Initiative W. 2017.** Acute kidney disease and renal recovery: consensus report of the Acute Disease Quality Initiative (ADQI) 16 workgroup. *Nature Reviews Nephrology* 13:241–257 DOI [10.1038/nrneph.2017.2](https://doi.org/10.1038/nrneph.2017.2).
- Cheng W, Wu X, Liu Q, Wang HS, Zhang NY, Xiao YQ, Yan P, Li XW, Duan XJ, Peng JC, Feng S, Duan SB. 2020.** Post-contrast acute kidney injury in a hospitalized population: short-, mid-, and long-term outcome and risk factors for adverse events. *European Radiology* 30:3516–3527 DOI [10.1007/s00330-020-06690-3](https://doi.org/10.1007/s00330-020-06690-3).
- Coca SG, Yusuf B, Shlipak MG, Garg AX, Parikh CR. 2009.** Long-term risk of mortality and other adverse outcomes after acute kidney injury: a systematic review and meta-analysis. *American Journal of Kidney Diseases* 53:961–973 DOI [10.1053/j.ajkd.2008.11.034](https://doi.org/10.1053/j.ajkd.2008.11.034).
- Fujii T, Uchino S, Takinami M, Bellomo R. 2014.** Subacute kidney injury in hospitalized patients. *Clinical Journal of the American Society of Nephrology* 9:457–461 DOI [10.2215/CJN.04120413](https://doi.org/10.2215/CJN.04120413).
- Goldstein SL, Chawla L, Ronco C, Kellum JA. 2014.** Renal recovery. *Critical Care* 18:301 DOI [10.1186/cc13180](https://doi.org/10.1186/cc13180).
- He L, Wei Q, Liu J, Yi M, Liu Y, Liu H, Sun L, Peng Y, Liu F, Venkatachalam MA, Dong Z. 2017.** AKI on CKD: heightened injury, suppressed repair, and the underlying mechanisms. *Kidney International* 92:1071–1083 DOI [10.1016/j.kint.2017.06.030](https://doi.org/10.1016/j.kint.2017.06.030).
- Hoste EAJ, Kellum JA, Selby NM, Zarbock A, Palevsky PM, Bagshaw SM, Goldstein SL, Cerda J, Chawla LS. 2018.** Global epidemiology and outcomes of acute kidney injury. *Nature Reviews Nephrology* 14:607–625 DOI [10.1038/s41581-018-0052-0](https://doi.org/10.1038/s41581-018-0052-0).
- Hsu CK, Wu IW, Chen YT, Tsai TY, Tsai FC, Fang JT, Chen YC. 2020.** Acute kidney disease stage predicts outcome of patients on extracorporeal membrane oxygenation support. *PLOS ONE* 15:e0231505 DOI [10.1371/journal.pone.0231505](https://doi.org/10.1371/journal.pone.0231505).
- James MT, Levey AS, Tonelli M, Tan Z, Barry R, Pannu N, Ravani P, Klarenbach SW, Manns BJ, Hemmelgarn BR. 2019.** Incidence and prognosis of acute kidney diseases and disorders using an integrated approach to laboratory measurements in a universal health care system. *JAMA Network Open* 2 DOI [10.1001/jamanetworkopen.2019.1795](https://doi.org/10.1001/jamanetworkopen.2019.1795).

- Kellum JA, Zarbock A, Nadim MK. 2017.** What endpoints should be used for clinical studies in acute kidney injury? *Intensive Care Medicine* **43**:901–903 DOI [10.1007/s00134-017-4732-1](https://doi.org/10.1007/s00134-017-4732-1).
- Kidney Disease: Improving Global Outcomes (KDIGO) Acute Kidney Injury Work Group. 2012.** KDIGO clinical practice guideline for acute kidney injury. *Kidney International* **2**:1–138 DOI [10.1038/kisup.2012.1](https://doi.org/10.1038/kisup.2012.1).
- Kofman N, Margolis G, Gal-Oz A, Letourneau-Shesaf S, Keren G, Rozenbaum Z, Shacham Y. 2019.** Long-term renal outcomes and mortality following renal injury among myocardial infarction patients treated by primary percutaneous intervention. *Coronary Artery Disease* **30**:87–92 DOI [10.1097/MCA.0000000000000678](https://doi.org/10.1097/MCA.0000000000000678).
- Kramann R, Tanaka M, Humphreys BD. 2014.** Fluorescence microangiography for quantitative assessment of peritubular capillary changes after AKI in mice. *Journal of the American Society of Nephrology* **25**:1924–1931 DOI [10.1681/asn.2013101121](https://doi.org/10.1681/asn.2013101121).
- Lameire NH, Bagga A, Cruz D, De Maesseneer J, Endre Z, Kellum JA, Liu KD, Mehta RL, Pannu N, Van Biesen W, Vanholder R. 2013.** Acute kidney injury: an increasing global concern. *Lancet* **382**:170–179 DOI [10.1016/S0140-6736\(13\)60647-9](https://doi.org/10.1016/S0140-6736(13)60647-9).
- Lewington AJ, Cerda J, Mehta RL. 2013.** Raising awareness of acute kidney injury: a global perspective of a silent killer. *Kidney International* **84**:457–467 DOI [10.1038/ki.2013.153](https://doi.org/10.1038/ki.2013.153).
- Linder A, Fjell C, Levin A, Walley KR, Russell JA, Boyd JH. 2014.** Small acute increases in serum creatinine are associated with decreased long-term survival in the critically ill. *American Journal of Respiratory and Critical Care Medicine* **189**:1075–1081 DOI [10.1164/rccm.201311-2097OC](https://doi.org/10.1164/rccm.201311-2097OC).
- Liu Z, Wang Y, Shu S, Cai J, Tang C, Dong Z. 2019.** Non-coding RNAs in kidney injury and repair. *American Journal of Physiology. Cell Physiology* **317**:C177–C188 DOI [10.1152/ajpcell.00048.2019](https://doi.org/10.1152/ajpcell.00048.2019).
- Matsuura R, Iwagami M, Moriya H, Ohtake T, Hamasaki Y, Nangaku M, Doi K, Kobayashi S, Noiri E. 2020.** The clinical course of acute kidney disease after cardiac surgery: a retrospective observational study. *Scientific Reports* **10**:6490 DOI [10.1038/s41598-020-62981-1](https://doi.org/10.1038/s41598-020-62981-1).
- Mehta RL, Cerda J, Burdmann EA, Tonelli M, Garcia-Garcia G, Jha V, Susantitaphong P, Rocco M, Vanholder R, Sever MS, Cruz D, Jaber B, Lameire NH, Lombardi R, Lewington A, Feehally J, Finkelstein F, Levin N, Pannu N, Thomas B, Aronoff-Spencer E, Remuzzi G. 2015.** International Society of Nephrology’s 0by25 initiative for acute kidney injury (zero preventable deaths by 2025): a human rights case for nephrology. *Lancet* **385**:2616–2643 DOI [10.1016/S0140-6736\(15\)60126-X](https://doi.org/10.1016/S0140-6736(15)60126-X).
- Mima A, Tansho K, Nagahara D, Tsubaki K. 2019.** Incidence of acute kidney disease after receiving hematopoietic stem cell transplantation: a single-center retrospective study. *PeerJ* **7**:e6467 DOI [10.7717/peerj.6467](https://doi.org/10.7717/peerj.6467).
- Mizuguchi KA, Huang CC, Shempp I, Wang J, Shekar P, Frenzl G. 2018.** Predicting kidney disease progression in patients with acute kidney injury after cardiac surgery. *Journal of Thoracic and Cardiovascular Surgery* **155**:2455–2463 DOI [10.1016/j.jtcvs.2018.01.093](https://doi.org/10.1016/j.jtcvs.2018.01.093).

- Patimarattananan T, Nongnuch A, Pattaranutaporn P, Unwanatham N, Jiarpinitnun C, Ngamphaiboon N. 2020.** Risk and impact of delayed renal impairment in patients with locally advanced head and neck squamous cell carcinoma receiving chemoradiotherapy with cisplatin. *Support Care Cancer* **29**:877–887 DOI [10.1007/s00520-020-05566-y](https://doi.org/10.1007/s00520-020-05566-y).
- Peerapornratana S, Priyanka P, Wang S, Smith A, Singbartl K, Palevsky PM, Chawla LS, Yealy DM, Angus DC, Kellum JA. 2020.** Sepsis-associated acute kidney disease. *Kidney International Reports* **5**:839–850 DOI [10.1016/j.ekir.2020.03.005](https://doi.org/10.1016/j.ekir.2020.03.005).
- Semler MW, Rice TW, Shaw AD, Siew ED, Self WH, Kumar AB, Byrne DW, Ehrenfeld JM, Wanderer JP. 2016.** Identification of major adverse kidney events within the electronic health record. *Journal of Medical Systems* **40**:167 DOI [10.1007/s10916-016-0528-z](https://doi.org/10.1007/s10916-016-0528-z).
- Shu S, Wang Y, Zheng M, Liu Z, Cai J, Tang C, Dong Z. 2019.** Hypoxia and hypoxia-inducible factors in kidney injury and repair. *Cell* **8**:207 DOI [10.3390/cells8030207](https://doi.org/10.3390/cells8030207).
- Siew ED, Ikizler TA, Matheny ME, Shi Y, Schildcrout JS, Danciu I, Dwyer JP, Srichai M, Hung AM, Smith JP, Peterson JF. 2012.** Estimating baseline kidney function in hospitalized patients with impaired kidney function. *Clinical Journal of the American Society of Nephrology* **7**:712–719 DOI [10.2215/CJN.10821011](https://doi.org/10.2215/CJN.10821011).
- Susantitaphong P, Cruz DN, Cerda J, Abulfaraj M, Alqahtani F, Koulouridis I, Jaber BL. 2013.** World incidence of AKI: a meta-analysis. *Clinical Journal of the American Society of Nephrology* **8**:1482–1493 DOI [10.2215/cjn.00710113](https://doi.org/10.2215/cjn.00710113).
- Tang C, Ma Z, Zhu J, Liu Z, Liu Y, Liu Y, Cai J, Dong Z. 2019.** P53 in kidney injury and repair: mechanism and therapeutic potentials. *Pharmacology and Therapeutics* **195**:5–12 DOI [10.1016/j.pharmthera.2018.10.013](https://doi.org/10.1016/j.pharmthera.2018.10.013).
- Venkatachalam MA, Griffin KA, Lan R, Geng H, Saikumar P, Bidani AK. 2010.** Acute kidney injury: a springboard for progression in chronic kidney disease. *American Journal of Physiology-Renal Physiology* **298**:F1078–F1094 DOI [10.1152/ajprenal.00017.2010](https://doi.org/10.1152/ajprenal.00017.2010).
- Yang Y, Song M, Liu Y, Liu H, Sun L, Peng Y, Liu F, Venkatachalam MA, Dong Z. 2016.** Renoprotective approaches and strategies in acute kidney injury. *Pharmacology and Therapeutics* **163**:58–73 DOI [10.1016/j.pharmthera.2016.03.015](https://doi.org/10.1016/j.pharmthera.2016.03.015).