

Corrigendum

Corrigendum to “NFAT1 hypermethylation promotes epithelial-mesenchymal transition and metastasis in nasopharyngeal carcinoma by activating ITGA6 transcription” [Neoplasia 21 (2019): 311–321]



Jian Zhang^{a,b,1}; Zi-Qi Zheng^{a,1}; Ya-Wei Yuan^{b,1};
Pan-Pan Zhang^{a,1}; Ying-Qin Li^a; Ya-Qin Wang^a;
Xin-Ran Tang^a; Xin Wen^a; Xiao-Hong Hong^a;
Yuan Lei^a; Qing-Mei He^a; Xiao-Jing Yang^a;
Ying Sun^a; Jun Ma^a; Na Liu^{a,*}

^a State Key Laboratory of Oncology in South China, Collaborative Innovation Center of Cancer Medicine, Guangdong Key Laboratory of Nasopharyngeal Carcinoma Diagnosis and Therapy, Sun Yat-sen University Cancer Center, Guangzhou, PR China

^b Department of Radiation Oncology, Affiliated Cancer Hospital & Institute of Guangzhou Medical University, Guangzhou, PR China

The authors regret that the micrographs of SUNE1 NFAT1-NC and SUNE1 and HONE1 NFAT1-sh1 at 48h in Figure 3C and HONE1 NFAT1+V2 at 0h in Figure 6A, HONE1 NFAT1-NC migration in Figure 3D, HONE1 NFAT1 and SUNE1 NFAT1+ITGA6 invasion in Figure 6C are incorrect. The correct Figure 3 and Figure 6 are below.

The authors would like to apologize for any inconvenience caused.

DOI of original article: [10.1016/j.neo.2019.01.006](https://doi.org/10.1016/j.neo.2019.01.006)

* Address all correspondence to: Na Liu, State Key Laboratory of Oncology in South China, Sun Yat-sen University Cancer Center, 651 Dongfeng Road East, Guangzhou 510060, PR China.

E-mail address: liun1@sysucc.org.cn (N. Liu).

¹ Jian Zhang, Zi-Qi Zheng, Ya-Wei Yuan and Pan-Pan Zhang contributed equally to this article.

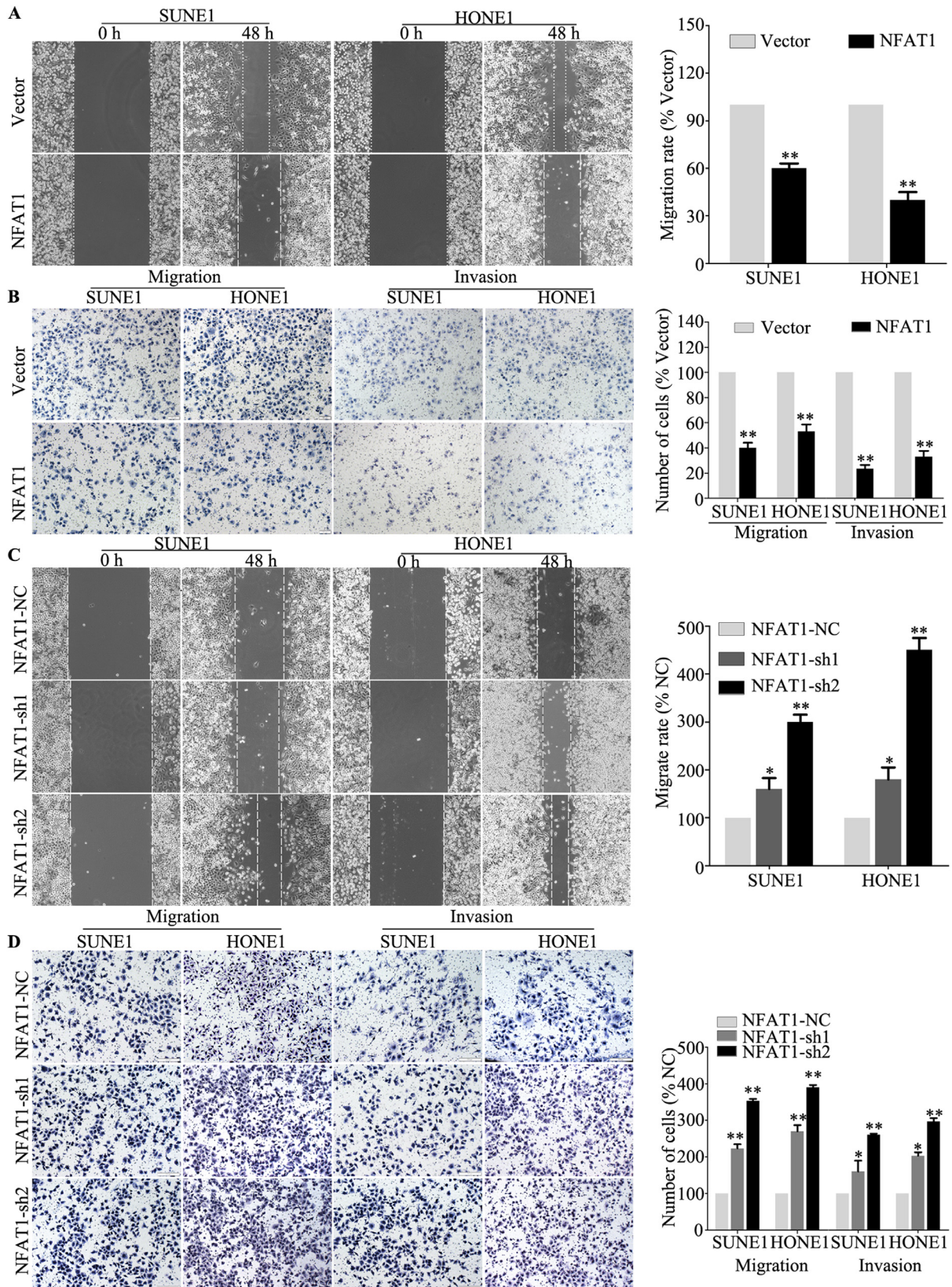


Fig. 3.

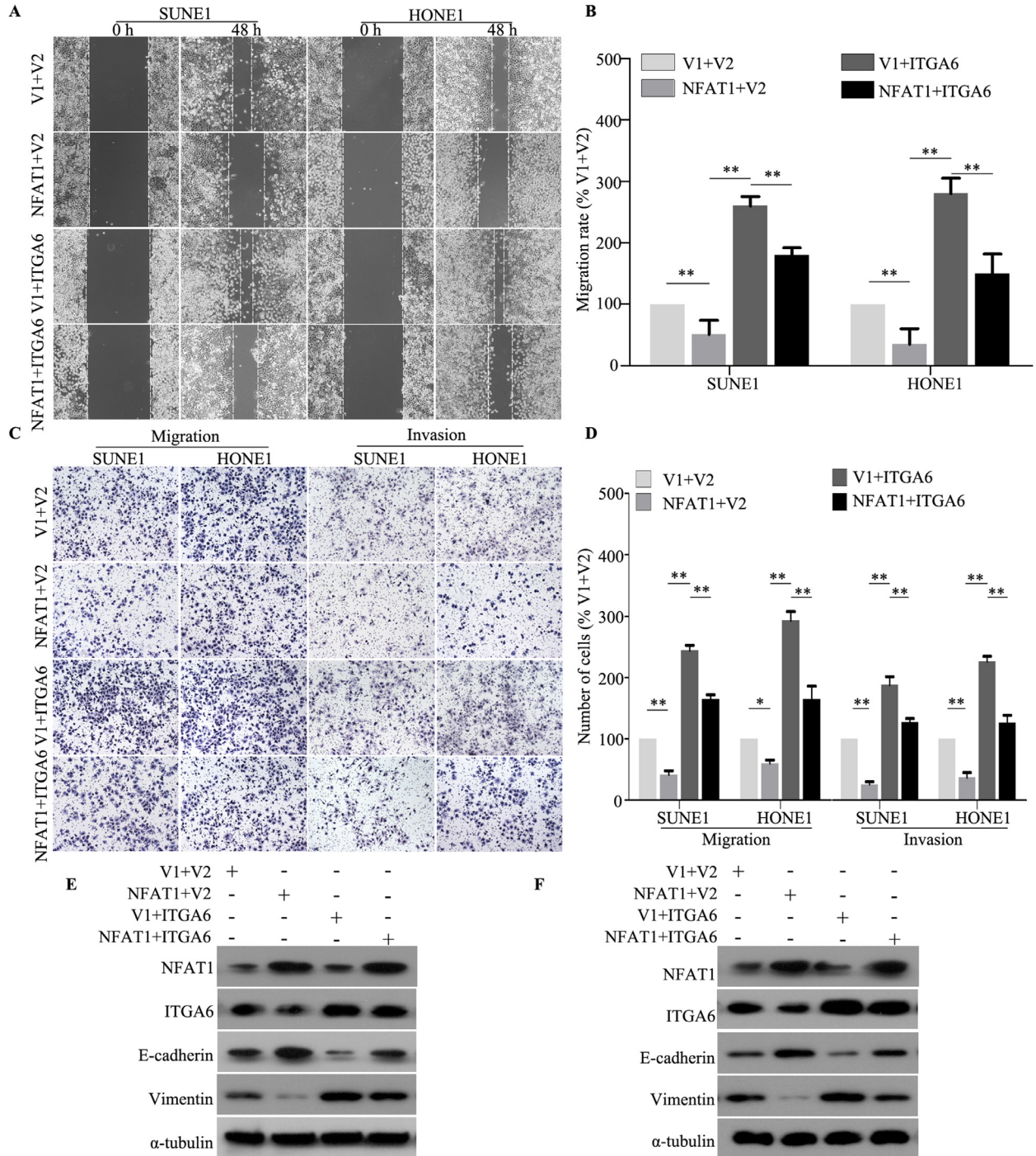


Fig. 6.