

Rapamycin therapy for neonatal tuberous sclerosis complex with cardiac rhabdomyomas: A case report and review

SHANSHAN MAO¹, QI LONG², HUIJIA LIN³ and JINLING LIU⁴

Departments of ¹Neurology, ²Clinical Nutrition, ³Neonatology and ⁴Pulmonology, The Children's Hospital, Zhejiang University School of Medicine, Hangzhou, Zhejiang 310052, P.R. China

Received September 19, 2016; Accepted July 11, 2017

DOI: 10.3892/etm.2017.5335

Abstract. Tuberous sclerosis complex (TSC) is an autosomal dominant genetic disease that varies greatly in its expression. The current study reports a novel case of TSC caused by a TSC2 mutation (*TSC2c.1642_1643insA* or *TSC2p.K549fsX589*), in which multiple cardiac rhabdomyomas were detected by fetal echocardiography in week 31 of pregnancy. The infant was delivered successfully; however, seizures began 16 days following birth. Subsequent genetic tests confirmed a diagnosis of TSC. Rapamycin treatment resulted in regression of cardiac rhabdomyomas and controlled seizures. The current study demonstrates the value of fetal echocardiography in the diagnosis of TSC and suggests that inhibition of the mammalian target of the rapamycin (mTOR) signaling pathway may be considered as a potential antiepileptogenic therapy for neonatal TSC. In addition, it was demonstrated that rapamycin treatment was therapeutically beneficial for preventing disorders caused by abnormal mTOR signaling, such as cancer. According to the literature, cardiac rhabdomyomas, seizures and skin lesions are well established markers for TSC in neonates. MRI scans of the brain and genetic screening of TSC1 and TSC2 genes may facilitate an early diagnosis of TSC.

Introduction

Tuberous sclerosis complex (TSC) is an autosomal dominant genetic disease with an incidence of 1 in 6,000 and its symptoms include seizures, mental retardation, skin lesions and the formation of hamartomas in multiple organs, including the heart, brain, eye and kidney (1). Mutations in one of the two tumor suppressor genes TSC1-9q34 and TSC2-16p13.3 are responsible for TSC (2). The absence of clinical features

during the neonatal period makes the diagnosis of TSC difficult. Neonatal ultrasound and cerebral magnetic resonance imaging (MRI) may be used to detect hamartomas in the heart and brain (3). Additionally, genetic mutation analysis means that the risk of a couple conceiving a child with TSC can be determined prior to pregnancy (4). Shepherd *et al* (5) analyzed 355 cases of TSC and reported that the mortality rate is 13.8%.

Medication and surgery are the major treatment methods for TSC (6,7). Vigabatrin, an antiepileptic medicine, was approved in 2009 and recommended as a first-line drug for TSC-associated infantile spasms by 2012 (8). In addition, adrenocorticotrophic hormone was approved to treat infantile spasms in 2010 (9). Everolimus is applied for brain (subependymal giant cell astrocytoma) and kidney (renal angiomyolipoma) tumor treatment in children with TSC (10) and has also been demonstrated to be effective for TSC-epilepsy treatment (11). In 2017, vutubia was recommended by the European Commission as a treatment for refractory partial-onset seizures in patients with TSC (12). Canpolat *et al* (13) demonstrated that rapamycin effectively controls epilepsy without causing any marked side effects in children with TSC.

The current study describes a case of multiple cardiac rhabdomyomas confirmed by routine echocardiogram screening in week 31 of pregnancy. The infant experienced seizures in the neonatal period (2 weeks of age), which is earlier than previously reported cases in which the onset was 1 month of age (14). Genetic mutation analysis revealed a novel mutation in TSC2. The clinical presentation and final outcome of neonatal TSC is discussed in the current study.

Case report

The mother of the infant in the current case report was a 29-year-old female (gravida 2, para 0) who experienced an uncomplicated pregnancy until week 31 of gestation. A routine echocardiography examination revealed multiple substantial hyperechoic masses in the ventricular wall of the fetus, suggesting a diagnosis of cardiac rhabdomyomas. A male infant weighing 3 kg was successfully delivered in week 39 of pregnancy. At 23 days old, the infant was admitted to the Emergency Department of the Children's Hospital, Zhejiang University School of Medicine (Hangzhou, China) in January 2016. The infant had undergone a series of active seizures in the week prior to admittance. Seizure episodes

Correspondence to: Dr Jinling Liu, Department of Pulmonology, The Children's Hospital, Zhejiang University School of Medicine, 3333 Binsheng Road, Hangzhou, Zhejiang 310052, P.R. China
E-mail: horseliu@126.com

Key words: cardiac rhabdomyomas, mutation, neonatal tuberous sclerosis, seizures

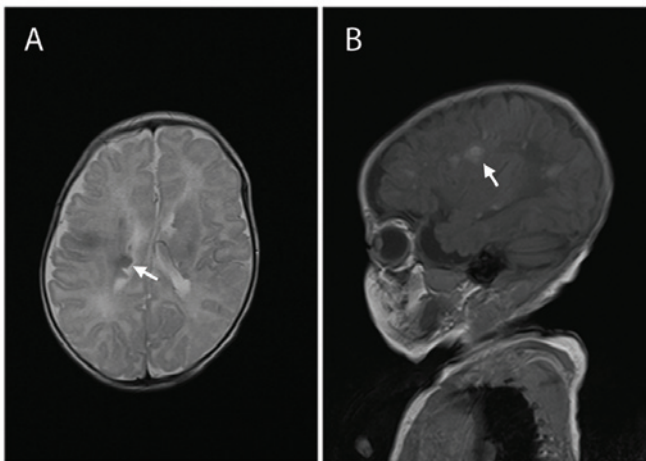


Figure 1. Neonatal (23-day-old) brain MRI. (A) Axial plane and (B) sagittal plane MRI images of a neonate with tuberous sclerosis complex at the first visit. The subependymal nodule is indicated by an arrow. MRI, magnetic resonance imaging.

were characterized by paroxysmal jittery limbs followed by the passing of urine. Each episode lasted 5-10 sec and was not accompanied by fever. The parents of the infant were healthy and had no history of TSC. The patient's family denied a history of epilepsy, mental retardation and behavioral problems.

Physical examination revealed a small number of hypomelanotic macules on the skin on the chest and back of the infant. The results of the neurological (including physiological reflex) and cardiovascular (heart rate, 124 bpm; blood pressure, 74/40 mmHg) examinations were normal. MRI scans of the brain identified subependymal nodules and subcortical tubers (Fig. 1), which are two distinct features of TSC. Echocardiography revealed hyperechoic masses with clear borders and uniform echoes, measuring 1.06x0.89 and 1.77x1.68 cm in the left atrium and the outlet of the right ventricle, respectively, verifying the presence of intracardial tumors, which indicated the presence of cardiac rhabdomyomas (Fig. 2). Ophthalmological examination clearly identified multiple nodules (Fig. 3). A detailed abdominal ultrasound did not identify any signs of TSC. Electrocardiogram revealed a sinus rhythm without cardiac arrhythmia and video electroencephalographic monitoring did not prompt a diagnosis of epileptic seizures. Mutation analysis of the TSC1 and TSC2 genes confirmed a diagnosis of TSC. A TSC2c.1642_1643insA [or TSC2p.K549fsX589; TSC2 normal gene reference is from NP_0,01070651.1 (<https://www.ncbi.nlm.nih.gov/protein/116256350/>)] frameshift mutation was identified, which terminated the translation of the encoded protein (Fig. 4). No mutations were identified in the TSC1 sequence.

Following diagnosis of TSC, the patient received antiepileptic drugs including Topamax® (3 mg/kg/day; Xian-Janssen Pharmaceutical Ltd., Xi'an, China), Depakin® (30 mg/kg/day; Sanofi S.A., Paris, France) and nitrazepam (1 mg/kg/day; Sigma-Aldrich; Merck KGaA, Darmstadt, Germany). However, this treatment did not alter the frequency of seizures. At the age of 3 months, the infant underwent treatment with 1 mg/(m²/day) rapamycin orally to treat resistant epileptic seizures and the blood concentration of rapamycin

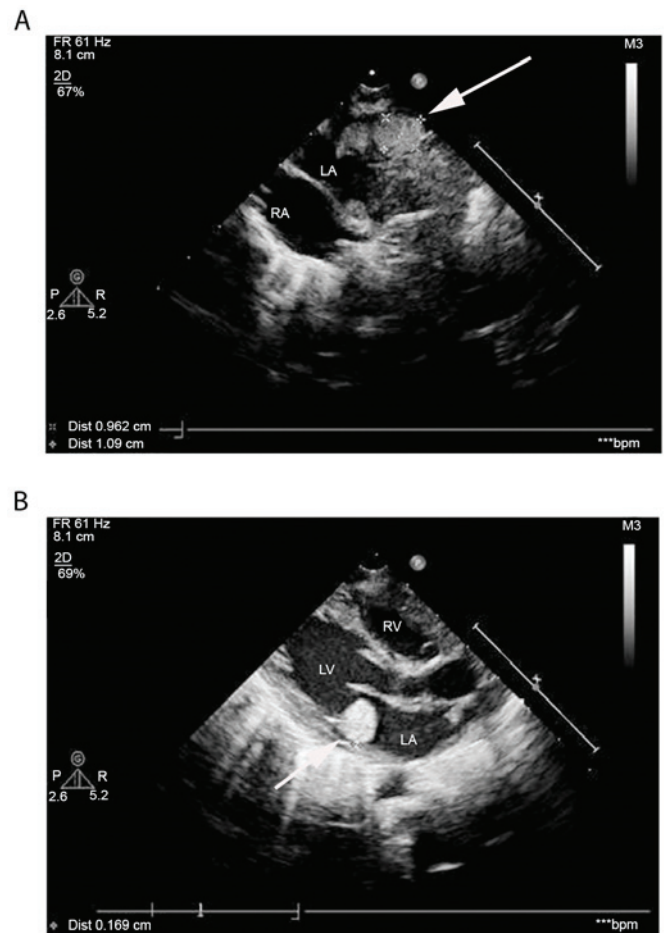


Figure 2. Echocardiographic images of cardiac rhabdomyomas located in (A) the LA, measuring 1.06x0.89 cm and (B) the outlet of the RV, measuring 1.77x1.68 cm. Arrow indicates the cardiac rhabdomyomas. LA, left atrium; LV, left ventricle; RA, right atrium; RV, right ventricle; FR, frame rate; 2D, two dimensional; dist, distance.

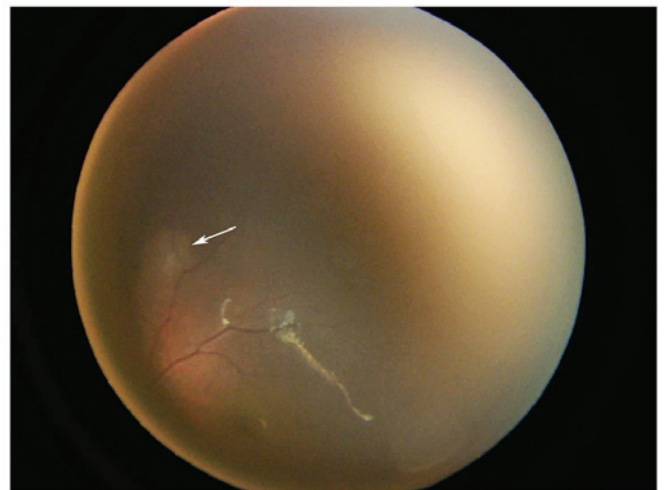


Figure 3. Ophthalmological examination revealing multiple clearly visible nodules.

was maintained at 5-10 µg/l, as measured using the Rapamycin ARCHITECT Sirolimus Reagent kit (cat. no. 72003M800) and the Abbott Architect i1000 (both Abbott Pharmaceutical Co.,

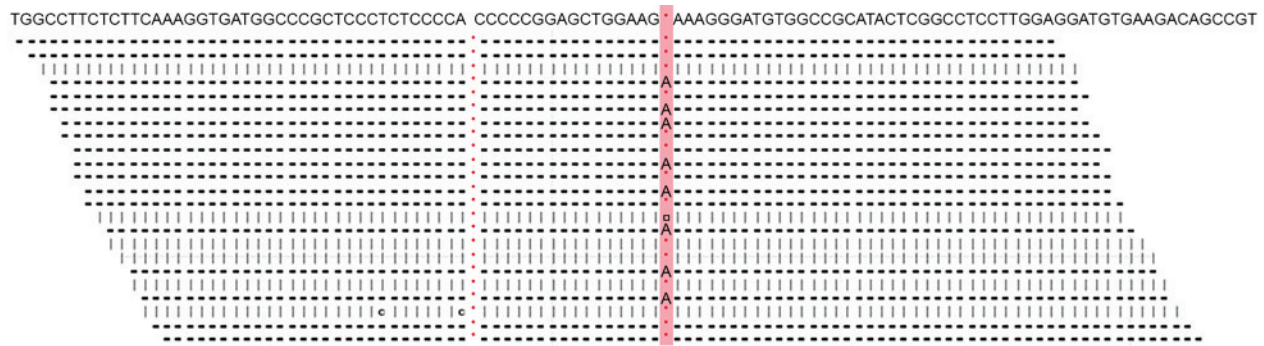


Figure 4. Genetic mutation analysis presenting a TSC2c.1642_1643insA frameshift mutation.

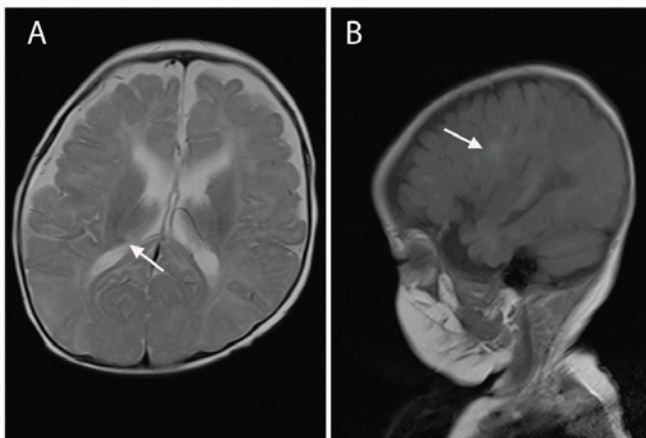


Figure 5. Brain MRI of the 6-month-old infant following treatment. (A) Axial plane and (B) sagittal plane MRI images of the infant presented in Fig. 1. Arrow indicated the subependymal nodules.

Ltd., Lake Bluff, IL, USA). During this period of 3 months, seizures and results of an electroencephalogram (EEG) were recorded every month and the results of the routine blood and urine tests, and liver and kidney function tests (including glutamic-pyruvic transaminase, normal range at 8-40 U/l and serum creatinine, normal range at 15-77 $\mu\text{mol/l}$) were normal. Echocardiography performed on the infant at the age of 6 months identified regression of multiple cardiac rhabdomyomas and MRI of the brain revealed a decrease in the size of cerebral lesions (Fig. 5). The results of the EEG were normal and the frequency of seizures decreased. However, the patient continued to exhibit mental retardation.

Discussion

A thorough search of literature published since 1990 (384 published manuscripts, including 98 reviews) was performed using PubMed (<https://www.ncbi.nlm.nih.gov/pubmed>) with the following key words: Tuberous sclerosis complex, newborn, neonates, neonatal, infants. Data from 36 infants aged <4 weeks who were diagnosed with TSC were included in the review. The clinical manifestations of TSC were present prior to birth in 8 patients (22.22%), at birth in 13 patients (36.11%) and by 4 weeks of age in 7 patients (19.44%). Information regarding onset of TSC was not available for the remaining 8 patients included in the current review (22.22%).

TSC was diagnosed at birth in 7 patients (19.44%) and by 4 weeks of age in 29 patients (80.56%). A greater number of males than females (ratio, 1.4:1) were diagnosed with TSC. There was a family history of TSC in 2 patients (5.55%). The most common features at onset of TSC were cardiac rhabdomyomas (36.11%), seizures (19.44%), arrhythmia (16.67%) and skin lesions (13.89%) followed by renal cyst, opisthotonus, feeding difficulties and respiratory distress. A total of 34 neonates underwent brain MRI or computed tomography imaging and 2 neonates underwent a brain biopsy following mortality. Cortical tubers, subependymal nodules and subependymal giant cell astrocytomas were identified in 26 (72.22%), 28 (77.78%) and 5 (13.89%) patients, respectively. Retinal hamartomas were detected in 5 neonates. The overall survival rate of neonates with TSC was 81% (21/26) and the duration of follow-up varied from 1 month to 4 years.

Cardiac rhabdomyomas were the most common initial symptom detected in neonates with TSC included in the current review and were identified in 13 neonates (36.11%). Cardiac rhabdomyomas are the most prevalent heart tumors in neonates (15). It has been reported that >80% of cardiac rhabdomyomas regress completely during infancy and early childhood (16). Depending on their size, location and number, cardiac rhabdomyomas cause serious cardiovascular complications, including intracavitary obstruction, diminished myocardial function and arrhythmia (17). Medical and/or surgical interventions are required for symptomatic patients with hemodynamically significant cardiac rhabdomyomas or a life-threatening arrhythmia (18). In the present review, 2 out of 7 neonates with arrhythmia succumbed following cardiac arrest but the other 5 neonates survived following effective antiarrhythmic treatment.

Neurological manifestations including seizures and mental retardation are the major factors for morbidity in patients with TSC (19). The current review indicated that ~20% of neonates with TSC develop seizures in the first month of life. Early onset of epilepsy in TSC is strongly associated with mental retardation (20,21). It has been demonstrated that antiepileptic treatment reduces the severity of epilepsy and risk of mental retardation in infants with TSC (22,23). Brain lesions in TSC include cortical tubers, subependymal nodules (SEN), subependymal giant cell astrocytomas and white matter lesions (24). In the current review, cortical tubers and SEN were the two most common brain MRI manifestations in neonates with TSC.

Cutaneous manifestations of TSC are easily identified and are present in >90% of patients with TSC (25). Hypomelanotic macules may be present at birth, however they also may not appear until later in life (26). The ocular symptoms of TSC are retinal hamartomas and these occur in 40-50% of patients. Retinal hamartomas typically do not cause visual dysfunction (27) and ocular hamartomas rarely occur in neonates (28). However, in the current case, hypomelanotic macules and ocular hamartomas were present.

Renal lesions serve an important role in the course of TSC by impairing renal function (29). Renal cysts, angiomyolipomas and renal cell carcinomas are the most common renal lesions in patients with TSC (30,31). Isaacs (32) reported that 13.2% of neonates and fetuses with TSC exhibit renal cysts. Polycystin 1, transient receptor potential channel interacting (PKD1) is the major gene responsible for autosomal dominant polycystic kidney disease. The TSC2 gene lies adjacent to PKD1, suggesting that PKD1 serves a role in the etiology of renal cystic disease in TSC (33). Deletion of the TSC2 and PKD1 genes is associated with a severe polycystic phenotype and this occurs in 2% of patients with TSC (34).

TSC is caused by mutations in either of the two tumor suppressor genes, TSC1, which encodes hamartin (35) and TSC2, which encodes tuberin (36). TSC1 and TSC2 inhibit the mechanistic target of the mTOR-mediated signaling pathway, thus preventing cell growth and cell cycle progression (37). Dysfunction of TSC1/TSC2, which may be caused by a mutation, results in the loss of control of mTOR signaling and subsequently causes cancer. A novel TSC2 mutation was present in the current case report. The earlier diagnosis of patients with TSC2 mutations may be beneficial for reducing the severity of symptoms with earlier intervention (38). Rapamycin inhibits the activation of the mTOR signaling pathway and has been used to treat patients with TSC (39). Several studies have demonstrated successful regression of lesions in the skin, brain, and kidney (40-42). Canpolat *et al* (13) demonstrated that rapamycin effectively controls epilepsy without causing any marked side effects in children with TSC. However, to the best of our knowledge, there have been no studies in English investigating the effect of rapamycin on epilepsy in neonates and the safety of rapamycin in patients <18 years of age, particularly in infant and neonates, remains unknown (43). The patient in the current case study received rapamycin treatment and had a good prognosis, experiencing regression of cardiac rhabdomyomas and controlled seizures. Therefore, the current case report indicated that rapamycin treatment for TSC caused by a TSC2 mutation was therapeutically beneficial and may be beneficial in treating other disorders caused by abnormal mTOR signaling, such as cancer.

The current study demonstrates that cardiac rhabdomyomas, seizures and skin lesions are well established markers for TSC in neonates. MRI scans of the brain and genetic screening of TSC1 and TSC2 genes may facilitate an early diagnosis of TSC.

Acknowledgements

The present study was supported by the Science & Technology Bureau of Zhejiang Province (Zhejiang, China; grant no. 2015C31101).

References

1. Curatolo P and Maria BL: Tuberous sclerosis. *Handb Clin Neurol* 111: 323-331, 2013.
2. Crino PB, Nathanson KL and Henske EP: The tuberous sclerosis complex. *N Engl J Med* 355: 1345-1356, 2006.
3. Wortmann SB, Reimer A, Creemers JW and Mullaart RA: Prenatal diagnosis of cerebral lesions in Tuberous sclerosis complex (TSC). Case report and review of the literature. *Eur J Paediatr Neurol* 12: 123-126, 2008.
4. Lee KA, Won HS, Shim JY, Lee PR and Kim A: Molecular genetic, cardiac and neurodevelopmental findings in cases of prenatally diagnosed rhabdomyoma associated with tuberous sclerosis complex. *Ultrasound Obstet Gynecol* 41: 306-311, 2013.
5. Shepherd CW, Gomez MR, Lie JT and Crowson CS: Causes of death in patients with tuberous sclerosis. *Mayo Clin Proc* 66: 792-796, 1991.
6. Saxena A and Sampson JR: Epilepsy in Tuberous Sclerosis: Phenotypes, mechanisms and treatments. *Semin Neurol* 35: 269-276, 2015.
7. Pascual-Castroviejo I: Neurosurgical treatment of tuberous sclerosis complex lesions. *Childs Nerv Syst* 27: 1211-1219, 2011.
8. Krueger DA and Northrup H; International Tuberous Sclerosis Complex Consensus Group: Tuberous sclerosis complex surveillance and management: Recommendations of the 2012 International Tuberous Sclerosis Complex Consensus Conference. *Pediatr Neurol* 49: 255-265, 2013.
9. Go CY, Mackay MT, Weiss SK, Stephens D, Adams-Webber T, Ashwal S and Snead OC III; Child Neurology Society; American Academy of Neurology: Evidence-based guideline update: Medical treatment of infantile spasms. Report of the Guideline Development Subcommittee of the American Academy of Neurology and the Practice Committee of the Child Neurology Society. *Neurology* 78: 1974-1980, 2012.
10. Press Announcements-FDA approves Afinitor for non-cancerous kidney tumors caused by rare genetic disease. https://elbiruniblogspotcom.blogspot.ca/2012/04/press-announcements-fda-approves_27.html. Accessed April 27, 2012.
11. French JA, Lawson JA, Yapici Z, Ikeda H, Polster T, Nabbout R, Curatolo P, de Vries PJ, Dlugos DJ, Berkowitz N, *et al*: Adjunctive everolimus therapy for treatment-resistant focal-onset seizures associated with tuberous sclerosis (EXIST-3): A phase 3, randomised, double-blind, placebo-controlled study. *The Lancet* 388: 2153-2163, 2016.
12. AG Novartis International: Novartis drug Votubia® receives EU approval to treat refractory partial-onset seizures in patients with TSC. <https://www.novartis.com/news/media-releases/novartis-drug-votubiar-receives-eu-approval-treat-refractory-partial-onset>. Accessed January, 31 2017
13. Canpolat M, Per H, Gumus H, Yikilmaz A, Unal E, Patoroglu T, Cinar L, Kurtsoy A and Kumandas S: Rapamycin has a beneficial effect on controlling epilepsy in children with tuberous sclerosis complex: Results of 7 children from a cohort of 86. *Childs Nerv Syst* 30: 227-240, 2014.
14. Gipson TT, Gerner G, Srivastava S, Poretti A, Vaurio R, Hartman A and Johnston MV: Early Neurodevelopmental Screening in TSC: A Potential Window of Opportunity. *Pediatr Neurol* 51: 398-402, 2014.
15. Isaacs H Jr: Fetal and neonatal cardiac tumors. *Pediatr Cardiol* 25: 252-273, 2004.
16. Bader RS, Chitayat D, Kelly E, Ryan G, Smallhorn JF, Toi A and Hornberger LK: Fetal rhabdomyoma: Prenatal diagnosis, clinical outcome, and incidence of associated tuberous sclerosis complex. *J Pediatr* 143: 620-624, 2003.
17. Verhaaren HA, Vanakker O, De Wolf D, Suys B, Francois K and Matthys D: Left ventricular outflow obstruction in rhabdomyoma of infancy: Meta-analysis of the literature. *J Pediatr* 143: 258-263, 2003.
18. Stiller B, Hetzer R, Meyer R, Dittrich S, Pees C, Alexi-Meskishvili V and Lange PE: Primary cardiac tumours: When is surgery necessary? *Eur J Cardiothorac Surg* 20: 1002-1006, 2001.
19. Napolioni V, Moavero R and Curatolo P: Recent advances in neurobiology of Tuberous Sclerosis Complex. *Brain Dev* 31: 104-113, 2009.
20. Chu-Shore CJ, Major P, Camposano S, Muzykewicz D and Thiele EA: The natural history of epilepsy in tuberous sclerosis complex. *Epilepsia* 51: 1236-1241, 2010.

21. Curatolo P, Aronica E, Jansen A, Jansen F, Kotulska K, Lagae L, Moavero R and Jozwiak S: Early onset epileptic encephalopathy or genetically determined encephalopathy with early onset epilepsy? Lessons learned from TSC. *Eur J Paediatr Neurol* 20: 203-211, 2016.
22. Jozwiak S, Kotulska K, Domańska-Pakieła D, Lojszczyk B, Syczewska M, Chmielewski D, Dunin-Wasowicz D, Kmiec T, Szymkiewicz-Dangel J, Kornacka M, *et al*: Antiepileptic treatment before the onset of seizures reduces epilepsy severity and risk of mental retardation in infants with tuberous sclerosis complex. *Eur J Paediatr Neurol* 15: 424-431, 2011.
23. Cusmai R, Moavero R, Bombardieri R, Vigeveno F and Curatolo P: Long-term neurological outcome in children with early-onset epilepsy associated with tuberous sclerosis. *Epilepsy Behav* 22: 735-739, 2011.
24. Mizuguchi M and Takashima S: Neuropathology of tuberous sclerosis. *Brain Dev* 23: 508-515, 2001.
25. Cardis MA and DeKlotz CM: Cutaneous manifestations of tuberous sclerosis complex and the paediatrician's role. *Arch Dis Child* 102: 858-863, 2017.
26. Hake S: Cutaneous manifestations of tuberous sclerosis. *Ochsner J* 10: 200-204, 2010.
27. Schwartz RA, Fernández G, Kotulska K and Józwiak S: Tuberous sclerosis complex: Advances in diagnosis, genetics and management. *J Am Acad Dermatol* 57: 189-202, 2007.
28. Knopke S, Olze H, Becker ET, Manthey D, Lindig-Knopke C, Jöhrens K, Stölzel K and Böttcher A: Head and neck hamartomas: 10 years of experience at the Charité-University Medical Center Berlin. *HNO* 63: 552-556, 2015.
29. Kingswood JC, Bissler JJ, Budde K, Hulbert J, Guay-Woodford L, Sampson JR, Sauter M, Cox J, Patel U, Elmslie F, *et al*: Review of the Tuberous Sclerosis Renal Guidelines from the 2012 Consensus Conference: Current Data and Future Study. *Nephron* 134: 51-58, 2016.
30. Korula S, Ekbote A, Kumar N, Danda S, Agarwal I and Chaturvedi S: Renal manifestations of tuberous sclerosis among children: An Indian experience and review of the literature. *Clin Kidney J* 7: 134-137, 2014.
31. Rouviere O, Nivet H, Grenier N, Zini L and Lechevallier E: Kidney damage due to tuberous sclerosis complex: Management recommendations. *Diagn Interv Imaging* 94: 225-237, 2013.
32. Isaacs H: Perinatal (fetal and neonatal) tuberous sclerosis: A review. *Am J Perinatol* 26: 755-760, 2009.
33. Martignoni G, Bonetti F, Pea M, Tardanico R, Brunelli M and Eble JN: Renal disease in adults with TSC2/PKD1 contiguous gene syndrome. *Am J Surg Pathol* 26: 198-205, 2002.
34. Ismail NF, Nik Abdul Malik NM, Mohseni J, Rani AM, Hayati F, Salmi AR, Narazah MY, Zabidi-Hussin ZA, Silawati AR, Keng WT, *et al*: Two novel gross deletions of TSC2 in Malaysian patients with tuberous sclerosis complex and TSC2/PKD1 contiguous deletion syndrome. *Jpn J Clin Oncol* 44: 506-511, 2014.
35. van Slegtenhorst M, de Hoogt R, Hermans C, Nellist M, Janssen B, Verhoef S, Lindhout D, van den Ouweland A, Halley D, Young J, *et al*: Identification of the tuberous sclerosis gene TSC1 on chromosome 9q34. *Science* 277: 805-808, 1997.
36. European Chromosome 16 Tuberous Sclerosis Consortium: Identification and characterization of the tuberous sclerosis gene on chromosome 16. *Cell* 75: 1305-1315, 1993.
37. Kwiatkowski DJ: Rhebbing up mTOR: New insights on TSC1 and TSC2, and the pathogenesis of tuberous sclerosis. *Cancer Biol Ther* 2: 471-476, 2003.
38. Dabora SL, Jozwiak S, Franz DN, Roberts PS, Nieto A, Chung J, Choy YS, Reeve MP, Thiele E, Egelhoff JC, *et al*: Mutational analysis in a cohort of 224 tuberous sclerosis patients indicates increased severity of TSC2, compared with TSC1, disease in multiple organs. *Am J Hum Genet* 68: 64-80, 2001.
39. Kim WS: Mammalian target of rapamycin inhibitors for treatment in tuberous sclerosis. *Korean J Pediatr* 54: 241-245, 2011.
40. Franz DN, Leonard J, Tudor C, Chuck G, Care M, Sethuraman G, Dinopoulos A, Thomas G and Crone KR: Rapamycin causes regression of astrocytomas in tuberous sclerosis complex. *Ann Neurol* 59: 490-498, 2006.
41. Hofbauer GF, Marcollo-Pini A, Corsenca A, Kistler AD, French LE, Wuthrich RP and Serra AL: The mTOR inhibitor rapamycin significantly improves facial angiofibroma lesions in a patient with tuberous sclerosis. *Br J Dermatol* 159: 473-475, 2008.
42. Micozkadioglu H, Koc Z, Ozelsancak R and Yildiz I: Rapamycin therapy for renal, brain, and skin lesions in a tuberous sclerosis patient. *Ren Fail* 32: 1233-1236, 2010.
43. Rapamune: Prescribing information. United States Food and Drug Administration. Wyeth Pharmaceuticals, Inc. May, 2015. https://www.accessdata.fda.gov/drugsatfda_docs/label/2015/021083s058,021110s075lbl.pdf. Accessed May 28, 2016.