

Endoscopic Submucosal Dissection Is Safe and Effective for Lesions Located at the Anorectal Junction: Analysis from Two Referral European Centers

Mariana Figueiredo Ferreira^{a, b} Margarida Marques^a Rui Morais^a
Arnaud Lemmers^b Guilherme Macedo^a João Santos-Antunes^{a, c}

^aGastroenterology Department, Faculty of Medicine, Centro Hospitalar S. João, Porto, Portugal; ^bDepartment of Gastroenterology, Hepatopancreatology and Digestive Oncology, CUB Erasme Hospital, Université Libre de Bruxelles (ULB), Brussels, Belgium; ^cIpamup/i3S (Instituto de Investigação e Inovação em Saúde da Universidade do Porto), Porto, Portugal

Keywords

Endoscopic submucosal dissection · Anorectal lesions · Rectal lesions

Abstract

Introduction: Endoscopic submucosal dissection (ESD) is a well-established resection technique for colorectal superficial tumors, but its role in the treatment of anorectal junction (ARJ) lesions still remains to be determined. With this study, we aimed to evaluate the feasibility, safety, and efficacy of ESD for the resection of ARJ lesions, in comparison to more proximal rectal lesions. **Methods:** We performed a retrospective analysis of prospectively collected data concerning all consecutive rectal ESD procedures performed in two European centers, from 2015 to 2021. **Results:** A total of two hundred and fifty-two rectal lesions were included. Sixty (24%) were ARJ lesions, and the remaining 192 (76%) were located proximally. Technical success was achieved in 248 procedures (98%), and its rate was similar in both locations ($p =$

0.246). Most of the lesions presented high-grade dysplasia/Tis adenocarcinoma (54%); 36 (15%) had submucosal adenocarcinoma, including 20 superficial (sm1) and 16 deeply invasive ($>SM1$) T1 cancers. We found no differences between ARJ and rectal lesions in regard to *en bloc* resection rate (100% vs. 96%, $p = 0.204$), R0 resection rate (76% vs. 75%, $p = 0.531$), curative resection rate (70% vs. 70%, $p = 0.920$), procedures' median duration (120 min vs. 90 min, $p = 0.072$), ESD velocity (14 vs. 12 mm²/min, $p = 0.415$), histopathology result ($p = 0.053$), and the need for surgery due to a non-curative ESD (5% vs. 3%, $p = 0.739$). Also, there was no statistically significant difference that concerns delayed bleeding (7% vs. 8%, $p = 0.709$), perforation (0% vs. 5%, $p = 0.075$), or the need for readmission (2% vs. 2%, $p = 0.939$). Nevertheless, anorectal stenosis (5% vs. 0%, $p = 0.003$) and anorectal pain (9% vs. 1%, $p = 0.002$) were significantly more frequent in ARJ lesions. **Conclusion:** ESD is a safe and efficient resection technique for the treatment of rectal lesions located in the ARJ.

© 2023 The Author(s).
Published by S. Karger AG, Basel

A dissecação endoscópica da submucosa é um tratamento seguro e eficaz para lesões da junção ano-rectal: a experiência de dois centros europeus de referência

Palavras Chave

Dissecação endoscópica da submucosa · Lesões ano-rectais · Lesões rectais

Resumo

Introdução: A dissecação endoscópica da submucosa (ESD) é uma técnica endoscópica com demonstrada eficácia nas lesões neoplásicas superficiais colorectais. No entanto, a evidência da sua eficácia nas lesões localizadas na junção ano-rectal é escassa. O nosso objectivo foi avaliar a segurança e eficácia da ESD nas lesões da junção ano-rectal (menos de 2 cm da linha pectínea), em comparação com as lesões mais proximais do recto. **Métodos:** Análise retrospectiva de registos colhidos prospectivamente de dois centros europeus de referência, entre 2015 e 2021. **Resultados:** Foram incluídas 252 lesões. Sessenta (24%) localizavam-se na junção ano-rectal, e as restantes 192 noutra local do recto. O sucesso técnico foi de 98% ($n = 248$) e foi semelhante nas 2 localizações ($p = 0.246$). A maioria das lesões eram displasias de alto grau/Tis (54%); 36 (15%) tinham adenocarcinoma submucoso, tendo 20 invasão submucosa superficial (sm1) e 16 invasão profunda (>SM1). Não foram encontradas diferenças entre as duas localizações relativamente às taxas de ressecção em bloco (100% vs. 96%, $p = 0.204$), R0 (76% vs. 75%, $p = 0.531$), ou curativa (70% vs. 70%, $p = 0.920$), duração da ESD (mediana 120 min vs. 90 min, $p = 0.072$), velocidade da ESD (14 vs. 12 mm²/min, $p = 0.415$) ou resultado histológico ($p = 0.053$), assim como na necessidade de cirurgia por ESD não curativa (5% vs. 3%, $p = 0.739$). Além disso, as taxas de hemorragia tardia (7% vs. 8%, $p = 0.709$), perfuração (0% vs. 5%, $p = 0.075$) e necessidade de internamento por complicações (2% vs. 2%, $p = 0.939$) não revelaram diferenças estatisticamente significativas. A este-nose ano-rectal (5% vs. 0%, $p = 0.003$) e a dor ano-rectal (9% vs. 1%, $p = 0.002$) foram mais frequentes nas lesões da junção ano-rectal. **Conclusão:** A ESD é uma técnica segura e eficaz no tratamento das lesões do recto localizadas na junção ano-rectal.

© 2023 The Author(s).
Published by S. Karger AG, Basel

Introduction and Objectives

Endoscopic mucosal resection (EMR) and endoscopic submucosal dissection (ESD) are well-established resection techniques for colorectal superficial tumors, depending on their size, morphology, and localization [1–4]. For larger lesions (>40 mm diameter) and whenever superficial submucosal cancer is suspected or cannot be firmly excluded, ESD is the recommended approach, as it allows *en bloc* resection regardless of the lesion's size, leading to a minimized recurrence risk [5, 6].

In regard to low rectal lesions extending to the anorectal junction (ARJ) lesions, ESD could be more challenging. Indeed, in contrast to more proximal colorectal lesions, ARJ lesions could theoretically present a higher risk of bleeding (due to the presence of the rectal venous plexus) and post-procedural pain (given the presence of sensory nerves in the squamous epithelium of the anal canal). Moreover, local direct drainage into the systemic circulation could increase the risk of bacteremia. Additionally to these anatomical features, the narrow lumen and permanent contraction of the anal sphincter could also impair the endoscopic diagnostic accuracy and increase the resection technical difficulty due to poor maneuverability and reduced visualization of the lesion and resection field.

Randomized trials comparing different local resection techniques (EMR, ESD, and transanal surgery) are lacking, and the optimal management strategy in this context still remains to be determined. This multicenter cohort study aimed to evaluate the feasibility, safety, and efficacy of ESD for ARJ neoplastic lesions (<20 mm from the dentate line) in comparison to more proximal rectal lesions (>20 mm from the dentate line).

Material and Methods

Patient Selection and ESD Technique

We included all ESDs performed consecutively in two referral European centers (Gastroenterology Department of Centro Hospitalar Universitário S. João, Porto, Portugal, and Department of Gastroenterology, Hepatopancreatology, and Digestive Oncology, CUB Erasme Hospital, Université Libre de Bruxelles [ULB], Brussels, Belgium), from January 2015 to June 2021. Patients' data were prospectively recorded in an electronic database and retrospectively reviewed for this study. Written informed consent was obtained from every patient before ESD. The institutional Ethics Board of both centers approved the prospective collection and retrospective analysis of the included data.

Lesions selected for ESD resection included neoplastic epithelial rectal lesions (from the anal verge until 15 cm from this site) that had no endoscopic suspicion of deep submucosal invasion

and were unsuitable for *en bloc* EMR. For the purpose of the study, all the lesions totally or partially located within less than 2 cm from the dentate line were considered “ARJ lesions,” as suggested by previous reports [7]. This is where the anal transition zone is most commonly found, with the mucosal folds (Morgagni columns) and the hemorrhoidal plexus usually unfolding distally from there. The remaining lesions were called “rectal lesions.” The procedures were performed using the GIF-H190 gastroscope (Olympus®, Tokyo, Japan). High-definition endoscopy, dye chromoendoscopy, and/or narrow-band imaging were used for characterization of all the lesions. Dissection was performed using 1.5- or 2-mm dual knives (Olympus®, Tokyo, Japan) for mucosal incision. Dual knives, insulated tip-2, or insulated tip-nano knives (Olympus®, Tokyo, Japan) were used for submucosal dissection. Erbe ICC-200, ICC-300, VIO-300, or VIO-3 electrosurgical units (ERBE® Elektromedizin GmbH, Tubingen, Germany) were used, with ENDO CUT mode effect 2 or DRY CUT mode effect 2, 30 W for mucosal incision and forced or swift coagulation (effect 3 or 4, 30 W) for submucosal dissection. Hemostasis (soft coagulation effect 5, 50–80 W) was performed with a Coagrasper (Olympus®, Tokyo, Japan), whenever necessary and at the end of each procedure. There was no predefined ESD strategy, and each operator had the liberty to choose the best strategy and approach to each lesion, depending on his/her own experience and the lesion’s presentation. Classic and tunnel strategies were mostly applied. All patients received antibiotic prophylaxis in case of anal canal involvement (either with amoxicillin-clavulanic acid [1,000 mg–62.5 mg] or with ceftriaxone [1 G] and metronidazole [500 mg]).

After ESD, all patients were followed in the outpatient clinic (with an appointment approximately 1 month after the procedure). Light analgesics (paracetamol) were prescribed at discharge, to be taken only in case of any pain or discomfort. Patients were also instructed to immediately call the department if any clinical abnormality appeared (including pain, bleeding, fever, or any other discomfort). Endoscopic follow-up was performed 3–6 months after ESD and posteriorly according to the current surveillance guidelines. Patients with malignant lesions were always discussed in a multidisciplinary dedicated board.

Histopathological Evaluation

ESD specimens were sent to pathology evaluation with pins on a cork plate, fixed in formalin. Sectioning at 2-mm intervals was performed to evaluate lateral and vertical margins.

Definitions and Outcomes

ESD failure was determined whenever the target lesion was not removed. *En bloc* resection required that the target lesion be retrieved in one single specimen, as opposed to a piecemeal resection (if the lesion was removed in more than one fragment). R0 resection was achieved when pathological evaluation showed free horizontal and vertical margins (even if there was <1 mm of normal tissue between the margins and the lesion) in an *en bloc* resected specimen. Specimens with thermal effects at the margins preventing the pathologist from definitely excluding the presence of abnormal cells were considered R1 resections. The area of the ESD specimen was calculated as the surface of an ellipse, multiplying half of the larger side with half of the smaller side with pi-value and expressed in mm². ESD velocity was calculated by dividing ESD area by the time of procedure in minutes (mm²/min).

In regard to adverse events, perforation was defined as the visualization of the mesorectum or intra-abdominal cavity during the procedure. Every case of post-procedural bleeding (rectorrhagia) was registered, regardless of the severity. Procedure-related mortality was defined as any death resulting from the ESD procedure.

Statistical Analysis

Categorical variables were described as absolute (*n*) and relative frequencies (%). Mean and standard deviation or median and percentiles or range were used for continuous variables as appropriate. When testing a hypothesis about continuous variables, t-Student or Mann-Whitney tests were used as appropriate, considering normality assumptions and the number of groups compared. When testing a hypothesis about categorical variables, a χ^2 test and Fisher’s exact test were used, as appropriate. The significance level used was 0.05. Statistical analysis was performed using Statistical Package for the Social Sciences v.25.

Results

Two hundred and fifty-two lesions were included in the study, with a mean age of 66 ± 11 years old and including 142 (57%) males. Sixty (24%) were located in the ARJ (Fig. 1), and the remaining 192 were located more proximally in the rectum. The mean lesion size was 48 ± 25 mm. Twenty-one (8%) lesions had already a previous resection attempt by EMR. In regard to morphology, the majority (43%) were Paris IIa + Is lesions, and only 10% were non-granular LSTs (Table 1). Technical success was achieved in 248 procedures (98%), 58 in the ARJ, and 190 in the rectum. *En bloc* resection was achieved in 97% of all cases and R0 resection in 75%. The median procedure time was 90 min (IQR 60–150 min). Hybrid ESD was required in 8 cases (3%), and the pocket-creation method was used in only 3 lesions (1%).

As opposed to the Belgian practice (where it’s protocol for all patients to stay for overnight in-hospital observation), in the Portuguese center, rectal ESDs are routinely performed in an ambulatory setting, which is why 123 out of 161 (76%) patients were discharged after only 4–6 h observation. The remaining patients (*n* = 38) were admitted for longer observation due to extensive resection (*n* = 30), severe intraprocedural bleeding (*n* = 5), and intraprocedural perforation (*n* = 3). None of the patients were admitted due to post-procedural anal pain. Taking into consideration the patients from the two centers, most of those requiring hospital admissions (86%) were admitted for strict surveillance during 1 day only.

Regarding histopathology, most of the cases presented high-grade dysplasia/Tis adenocarcinoma (54%). Thirty-six (15%) had submucosal adenocarcinoma, including 20

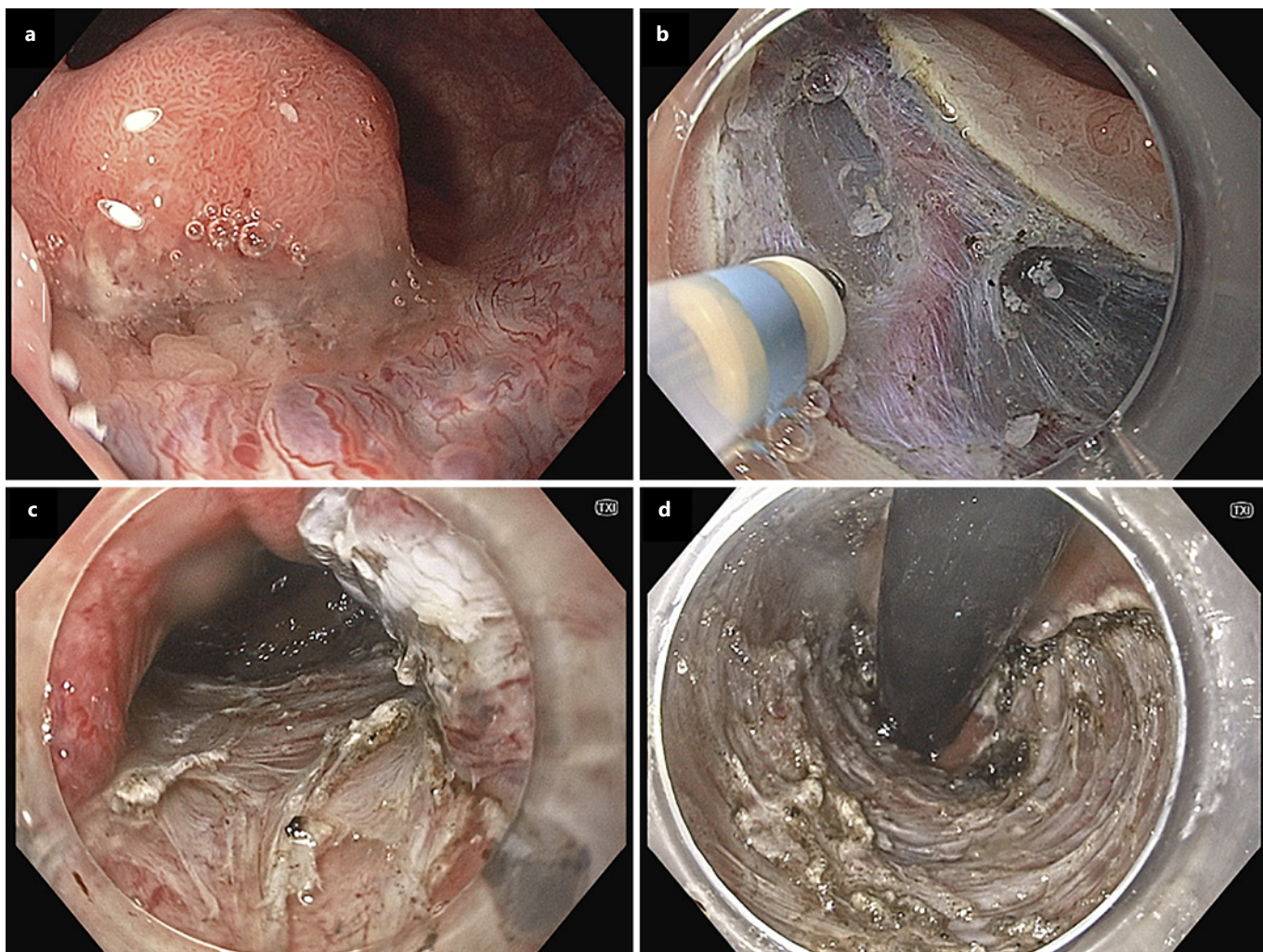


Fig. 1. A case of a granular mixed nodular lateral spreading tumor located at the ARJ. **a** Lesion extending to the dentate line. **b** Cut in the anal squamous mucosa. **c** Mucosal defect in the anal canal. **d** Final mucosal defect. Final histology shows SM1 submucosal adenocarcinoma.

superficial (sm1) and 16 deeply invasive (>SM1) T1 cancers. According to a multidisciplinary board decision, 13 patients were submitted to surgery due to a non-curative ESD, with 2 patients presenting lymph node metastasis but none with residual intramural dysplasia in the surgical specimen. From the remaining, 165 patients have already been submitted to follow-up endoscopies, with a median follow-up time of 12 months (IQR 6–18.5 months) and including 71% of the ARJ lesions and 64% of the rectal lesions group ($p = 0.321$). In total, only 2 patients presented residual lesions during follow-up.

Adverse Events

A total of 10 intraprocedural perforations (4%) were observed, all of them endoscopically resolved by the application of hemostatic clips. None of the patients required surgery due to an intraprocedural adverse event, and mortality was 0%.

Twenty patients (8%) developed post-procedural bleeding. Of them, only 3 patients needed endoscopic clipping; in the remaining cases, bleeding had stopped at the time of the rectoscopy and no treatment was required. Seven patients (3%) developed post-procedural anal pain, which resolved with systemic or topic analgesics, and 7

Table 1. Baseline characteristics of the two groups

	All lesions (n = 252)	ARJ lesions (n = 60)	Rectal lesions (n = 192)	p value
Patient characteristics				
Male sex, n (%)	142 (57)	26 (45)	116 (61)	0.029
Mean age (SD), years	66±11	64±14	67±10	0.224
Lesion characteristics				
Size, mm	48±25	57±31	46±22	0.020
Paris classification, n (%)				
0-IIa	50 (20)	14 (28)	36 (19)	0.085
0-Is	56 (23)	10 (17)	46 (24)	
0-IIa + Is	108 (43)	25 (43)	83 (44)	
Any 0-IIc component	17 (7)	1 (2)	16 (7)	
Other	17 (7)	8 (10)	9 (6)	
LST classification, n (%)				
G-H	28 (11)	11 (27)	17 (11)	0.013
G-MN	142 (57)	30 (73)	112 (75)	
NG-FE	8 (3)	0	8 (5)	
NG-PD	12 (5)	0	12 (8)	
Non-LST morphology	58 (24)	–	–	
Histology, n (%)				
Low-grade dysplasia	73 (29)	21 (36)	52 (28)	0.053
High-grade dysplasia/Tis	133 (54)	25 (43)	108 (57)	
Adenocarcinoma, T1SM1	20 (8)	4 (7)	16 (8)	
Adenocarcinoma, deeply invasive	16 (7)	4 (7)	12 (6)	
Others (4 serrated, 1 SCC, 1 hyperplastic)	6 (2)	4 (7)	2 (1)	

(3%) developed fever in the first day after the ESD that resolved with paracetamol.

Comparison between ARJ Lesions and Rectal Lesions

We found no differences between the location of the lesions regarding intraprocedural bleeding, *en bloc* resection, R0 resection, curative resection, duration of ESD, area of the lesions, ESD velocity, or histopathology result, as well as the need of surgery due to a non-curative ESD (Table 2). Also, there were no statistically significant differences regarding the hospitalization rate, delayed bleeding, perforation, fever, and the need of readmission due to adverse events.

Three patients from the ARJ lesions group developed post-procedural stenosis (5%), against none in the rectal lesions group ($p = 0.003$). Also, 5 patients with ARJ lesions (9%) reported anal pain, in opposition to only 2 (1%) from the rectal lesions group ($p = 0.002$).

From those followed up by endoscopy, 2 patients had residual lesion (1 in the first endoscopy following the ESD procedure at 15 months and 1 in the second follow-up at 17 months). They were both low-grade dysplastic adenomas and occurred in patients with ARJ lesions ($p = 0.064$) that had positive horizontal margins in the ESD. From

those submitted to surgery ($n = 13$), the only 2 patients with lymph node metastasis belong to the rectal lesions group ($p = 1.000$). At ESD pathological evaluation, one had positive lateral and vertical margins and tumor budding, while the other had deep submucosal invasion and budding.

Discussion and Conclusions

In our study, we performed a comparative evaluation of 252 rectal lesions treated by ESD, including 60 ARJ lesions and 192 non-ARJ lesions. We found similar results in regard to *en bloc* resection, R0 resection, and curative resection rates in both groups, independent of the rectal location. Similarly, the rates of residual lesion and overall complication rates were comparable between the two groups, except for a higher rate of post-procedural stenosis ($p = 0.003$) and anal pain ($p = 0.002$) in the ARJ lesions group. As reported in the literature [8], most of the patients with ARJ lesions were female, contrary to those located elsewhere in the rectum.

Regarding efficacy, Imai et al. and Probst et al. [8, 9] had previously consistently described a lower rate of R0

Table 2. Comparison of the outcomes of ESD procedures between the two groups

	All lesions (n = 252)	ARJ lesions (n = 60)	Rectal lesions (n = 192)	p value
Duration (IQR), min	90 (60–150)	120 (70–160)	90 (60–130)	0.072
Velocity, mm ² /min	12 (7–19)	14 (7–22)	12 (7–19)	0.415
Technical success, n (%)	248 (98)	58 (97)	190 (99)	0.241
<i>En bloc</i> resection, n (%)	240 (97)	58 (100)	182 (96)	0.204
R0 resection, n (%)	187 (75)	44 (76)	143 (75)	0.531
Curative resection, n (%)	172 (70)	40 (70)	132 (70)	0.920
Delayed bleeding, n (%)	20 (8)	4 (7)	16 (8)	0.709
Perforation, n (%)	10 (4)	0	10 (5)	0.075
Pain, n (%)	7 (3)	5 (9)	2 (1)	0.002
Admission due to adverse events, n (%)	4 (2)	1 (2)	3 (2)	0.939

resections in ARJ lesions, probably due to thermal damage at the anal side of the resection specimen. In our cohort, we did not verify this, as R0 resection rate was similar in both groups of patients, possibly reflecting an increased operator experience and improvements in pathology evaluation.

Recently, EMR effectiveness for the treatment of ARJ lesions has been reported [7, 10]. Nevertheless, in ARJ location, ESD shows the same advantages over EMR that had already been established for other colorectal regions [11, 12]. Mainly, it allows for an *en bloc* resection regardless of the lesion's size, resulting in a more accurate staging for invasive lesions. This is especially important in ARJ lesions, given the increased difficulty in making an accurate and qualitative endoscopic diagnosis of the lesions in this area, as a consequence of the narrow and constrictive character of the anal canal. Also, complementary surgical procedures after a non-curative ESD could harbor much more morbidity in the case of ARJ lesions comparing to other locations in the rectum, which highlights the importance of a R0 resection. Furthermore, ESD implies a direct vision cut and thus enables for a precise dissection above the vascular plexus, besides allowing the rigorous definition of the resection line and preventing the resection of excessive surrounding healthy tissue, thus minimizing mucosal defects and potentially reducing the risk of post-procedural stricture.

The number of patients that have been submitted to complementary surgery or endoscopic follow-up and demonstrated residual lesions was very low, as previously reported [13]. The only 2 cases of residual lesion corresponded to ARJ benign lesions, but they were both non-curative resections from the start. Therefore, we did not find any difference between the two locations, as supported by previous studies [8].

The risk of procedure-associated complications like bleeding, infection, pain, and stenosis has been of major concern. In our series, patients with ARJ lesions showed a higher incidence of post-procedural pain ($p = 0.002$), which is explained by the presence of nociceptive receptors in squamous epithelium on the distal margin. Previous authors have proposed that the injection of lidocaine to the submucosal layer could reduce post-procedural pain, even though strong data supporting this strategy are still lacking [14, 15]. Stenosis incidence was also significantly higher in the ARJ group ($p = 0.003$), which could be associated to the significantly greater diameter of the lesions included in this group comparing to more proximal rectal lesions (57 ± 31 mm vs. 46 ± 22 mm, $p = 0.02$) and to the smaller size of the luminal circumference in the distal rectum and canal anal. In regard to post-procedural bleeding and infection, there were no significant differences between groups, emphasizing the safety of ESD for ARJ lesion.

Our study is currently the largest series addressing ESDs in the ARJ. However, it has some limitations, including the retrospective design, even if based upon prospectively collected data, and the short follow-up period, which could lead to delayed complications rate and recurrence underestimation. Also, all procedures were performed by experienced endoscopists only, not allowing extrapolation for less experienced operators.

In conclusion, ESD is a safe and efficient technique for the treatment of rectal lesions located in the ARJ, similarly to those located elsewhere in the rectum. Randomized controlled trials comparing ESD and EMR are warranted to address the best approach for these lesions.

Statement of Ethics

The Ethics Committee of the Centro Hospitalar São João (approval number 255/2020) and the Ethics Committee of the Erasme Hospital (approval number P2021/539) both approved the prospective collection and retrospective analysis of the included data. As this is an observational retrospective study, no specific signed consent was obtained for inclusion in this study. All authors had access to the gathered data and approved the final manuscript.

Conflict of Interest Statement

The authors have no conflicts of interest to declare.

Funding Sources

There was no external funding for the realization of this work.

References

- 1 Santos-Antunes J, Marques M, Morais R, Carneiro F, Macedo G. Colorectal endoscopic submucosal dissection in a Western center: analysis of outcomes and safety profile. *GE Port J Gastroenterol*. 2021;28(5):319–27.
- 2 Saito Y, Uraoka T, Yamaguchi Y, Hotta K, Sakamoto N, Ikematsu H, et al. A prospective, multicenter study of 1111 colorectal endoscopic submucosal dissections (with video). *Gastrointest Endosc*. 2010;72(6):1217–25.
- 3 Moss A, Williams SJ, Hourigan LF, Brown G, Tam W, Singh R, et al. Long-term adenoma recurrence following wide-field endoscopic mucosal resection (WF-EMR) for advanced colonic mucosal neoplasia is infrequent: results and risk factors in 1000 cases from the Australian Colonic EMR (ACE) study. *Gut*. 2015;64(1):57–65.
- 4 Repici A, Hassan C, De Paula Pessoa D, Pagano N, Arezzo A, Zullo A, et al. Efficacy and safety of endoscopic submucosal dissection for colorectal neoplasia: a systematic review. *Endoscopy*. 2012;44(2):137–50.
- 5 Pimentel-Nunes P, Dinis-Ribeiro M, Ponchon T, Repici A, Vieth M, De Ceglie A, et al. Endoscopic submucosal dissection: European society of gastrointestinal endoscopy (ESGE) guideline. *Endoscopy*. 2015;47(9):829–54.
- 6 Wang J, Zhang XH, Ge J, Yang CM, Liu JY, Zhao SL. Endoscopic submucosal dissection vs. endoscopic mucosal resection for colorectal tumors: a meta-analysis. *World J Gastroenterol*. 2014;20(25):8282–7.
- 7 Shahidi N, Sidhu M, Vosko S, van Hattem WA, Bar-Yishay I, Schoeman S, et al. Endoscopic mucosal resection is effective for laterally spreading lesions at the anorectal junction. *Gut*. 2020;69(4):673–80.
- 8 Probst A, Ebigo A, Markl B, Ting S, Schaller T, Anthuber M, et al. Endoscopic submucosal dissection for rectal neoplasia extending to the dentate line: European experience. *Endosc Int Open*. 2018;6(11):E1355–E1362.
- 9 Imai K, Hotta K, Yamaguchi Y, Shinohara T, Ooka S, Shinoki K, et al. Safety and efficacy of endoscopic submucosal dissection of rectal tumors extending to the dentate line. *Endoscopy*. 2015;47(6):529–32.
- 10 Holt BA, Bassan MS, Sexton A, Williams SJ, Bourke MJ. Advanced mucosal neoplasia of the anorectal junction: endoscopic resection technique and outcomes (with videos). *Gastrointest Endosc*. 2014;79(1):119–26.
- 11 Santos-Antunes J, Marques M, Carneiro F, Macedo G. Choosing the best approach for laterally spreading lesions at the anorectal junction. *Gut*. 2021;70(5):1003–4.
- 12 Santos-Antunes J, Macedo G. Granular mixed type laterally spreading tumors: is universal ESD an acceptable approach in these lesions? *Clin Gastroenterol Hepatol*. 2021;19(8):1736.
- 13 Santos-Antunes J, Marques M, Carneiro F, Macedo G. Very low rate of residual neoplasia after non-curative endoscopic submucosal dissection: a western single-center experience. *Eur J Gastroenterol Hepatol*. 2021;33(9):1161–6.
- 14 Matsumoto S, Mashima H. The efficacy of endoscopic submucosal dissection for colorectal tumors extending to the dentate line. *Int J Colorectal Dis*. 2017;32(6):831–7.
- 15 Sanchez-Yague A, Yamaguchi Y, Takao T, Tanaka M, Kakushima N, Takizawa K, et al. Endoscopic submucosal dissection of a lower rectal polyp proximal to the dentate line by using local lidocaine injection. *Gastrointest Endosc*. 2011;73(2):405–7.

Author Contributions

Mariana Figueiredo and João Santos-Antunes contributed to the design and implementation of the research, to the statistical analysis and interpretation of the results, and finally, to the writing and revision of the manuscript. Mariana Figueiredo, Rui Morais, and João Santos-Antunes also contributed to data collection. Margarida Marques, Arnaud Lemmers, and Guilherme Macedo provided clinical and technical data, discussed the results, and commented on the manuscript.

Data Availability Statement

All data generated or analyzed during this study are included in this article. Further inquiries can be directed to the corresponding author.