

RESEARCH ARTICLE

Open Access



Clarification of the molecular pathway of Taiwan local pomegranate fruit juice underlying the inhibition of urinary bladder urothelial carcinoma cell by proteomics strategy

Ting-Feng Wu^{*}, Li-Ting Hsu, Bo-Xian Tsang, Li-Chien Huang, Wan-Yin Shih and Li-Yi Chen

Abstract

Background: Pomegranate fruit has been shown to exhibit the inhibitory activity against prostate cancer and lung cancer in vitro and in vivo, which might be a resource for chemoprevention and chemotherapy of cancer. Our previous documented findings indicated that treatment of urinary bladder urothelial carcinoma cell with the ethanol extract isolated from the juice of pomegranate fruit grown in Taiwan could inhibit tumor cell. In this study we intended to uncover the molecular pathway underlying anti-cancer efficacy of Taiwan pomegranate fruit juice against urinary bladder urothelial carcinoma.

Methods: We exploited two-dimensional gel electrophoresis coupled with tandem mass spectrometry to find the de-regulated proteins. Western immunoblotting was used to confirm the results collected from proteomics study.

Results: Comparative proteomics indicated that 20 proteins were differentially expressed in ethanol extract-treated T24 cells with 19 up-regulated and 1 down-regulated proteins. These de-regulated proteins were involved in apoptosis, cytoskeleton regulation, cell proliferation, proteasome activity and aerobic glycolysis. Further studies on signaling pathway demonstrated that ethanol extract treatment might inhibit urinary bladder urothelial carcinoma cell proliferation through restriction of PTEN/AKT/mTORC1 pathway via profilin 1 up-regulation. It also might evoke cell apoptosis through Diablo over-expression.

Conclusions: The results of this study provide a global picture to further investigate the anticancer molecular mechanism of pomegranate fruit.

Keywords: Apoptosis, Urinary bladder urothelial carcinoma, Pomegranate, Proteomics, Akt

Background

Bladder cancer is the most prevalent tumor of the urinary tract worldwide and ranked the 15th in cancer mortality rate in 2011 in Taiwan [1, 2]. Urothelial carcinoma is the most common and constitutes more than 90 % of bladder cancer cases in developed countries [3]. According to WHO/ISUP classification (2004), urinary bladder urothelial carcinoma (UBUC) cell can be classified into

low and high grade while high grade UBUC cell is less differentiated. Although most of UBUCs are papillary/non-invasive or superficially invasive types and can often be cured by curettage, some UBUCs can still develop relentless local recurrence followed by lethal distal spreading [4].

Pomegranate (*Punicagranatum*, Punicaceae), is an edible fruit cultivated in Mediterranean countries, India and the United States etc., comprising edible portions of 80 % juice and 20 % seeds. Pomegranate contains crude fibers, pectin, sugars, tannins (mainly ellagitannins),

* Correspondence: wutingfe@stust.edu.tw
Department of Biotechnology Southern Taiwan University of Science and Technology, 1 Nan-Tai Street, YungKang District, 710, Tainan, Taiwan

flavonoids and anthocyanins. Among those nutritious ingredients, anthocyanins is believed to have provided the fruit with potent antioxidant ability [5].

Many literatures have showed that pomegranate fruit displays anti-cancer effectiveness. Ellagitannin-rich pomegranate fruit extract (PFE) purified from pomegranate edible portion with 70 % acetone was found to have the apoptotic effects on human lung cancer A549 cells through the down-regulation of cell cycle-regulatory proteins operative in the G1 stage and inhibiting NF- κ B as well as MAP kinase pathways [p38, phosphoinositide 3 kinase (PI3K)/ protein kinase B (Akt), c-jun N-terminal kinase (JNK) and extracellular signal-regulated kinase (Erk)] [6]. In the animal model of primary lung tumor, PFE also diminishes tumor growth/progression/angiogenesis by the suppression of NF- κ B, MAP kinase pathways and mammalian target of rapamycin (mTOR) signaling [7]. In addition to the impacts on lung cancer, PFE may be a potential source for chemoprevention of prostate cancer [8]. The investigations on prostate cancer found that pomegranate polyphenols, ellagitannin-rich extract (PE) prepared from fruit skins can retard prostate cancer likely caused by chronic inflammation via suppressing the NF- κ B pathway [9]. PE was also observed to down-regulate the angiogenesis in prostate cancer through down-regulation of hypoxia-inducible factor 1- α (HIF-1 α) which transcriptionally regulates the vascular endothelial growth factor (VEGF) expression [10]. Clinical trial with rising prostate-specific antigen (PSA) after surgery or radiotherapy indicated that after daily treatment with 8 oz of pomegranate juice a significant increase in mean PSA doubling time from 15 months at baseline to 54 months post-treatment [11]. Our previous documented results showed that pomegranate juice could evoke prostate cancer cell apoptosis via mitochondrial pathway and death receptor signaling. It also can interfere with the expression levels of genes involved in cytoskeletal functions, anti-apoptosis, metabolism, NF-B signaling in juice-treated prostate cancer cell [12].

Based upon the aforementioned documented findings, pomegranate may be a potential chemopreventive resource against UBUC development and recurrence.

Our previous documented findings indicated that treatment of the ethanol extract (PEE) of pomegranate fruit juice could inhibit UBUC cell via cell cycle arrest and cell apoptosis [13]. Thus in this study we exploited two-dimensional gel electrophoresis (2-DE) coupled with tandem mass spectrometry to decipher the molecular mechanism underlying the cancer intervention of PEE. We found that PEE treatment could inhibit UBUC cell proliferation and migration. PEE-induced de-regulated proteins were associated with apoptosis, cytoskeleton regulation, AKT/mTOR signaling, proteasome activity and aerobic glycolysis. These de-regulated proteins

might contribute to PEE-evoked inhibition of UBUC cell proliferation and cell apoptosis.

Methods

Collection and identification of plant materials

The fruits of *P. granatum* were field collected from a farm land (22°41'59.3267" N, 120°30'45.1836" E) located in a small township Jiuru, Pingtung county, southern Taiwan from August to September, 2012. The plant specimens were identified by Dr. Gwo-Ing Liao from National Chen-Kung University, Taiwan and were pressed/dried for voucher specimens (Nan-Kai Lin, STUSTG308-001 to STUSTG308-003) deposited in the herbarium of Taiwan forestry research Institute (TAIF), Taiwan.

Preparation of ethanol extract (PEE) of pomegranate fruit juice

PEE was prepared as described previously [13]. In brief, fresh pomegranate fruit was peeled and juice was concentrated by freeze drying. The powder was first extracted with ethylacetate (EtOAc) at a ratio of 1:3 (w/v). After extraction, the residue was collected by centrifugation and then extracted with 70 % (v/v) ethanol as described in EtOAc extraction. The supernatant of ethanol extraction was vacuum dried and the product was recognized as PEE which was stored at -20 °C till future use. Appropriate amount of PEE dissolved in DMSO was used for anti-cancer assay and proteomics study.

Cell lines

Human UBUC T24 and J82 cells were used in this investigation. Human UBUC T24 cell, which is recognized as high grade and invasive, was purchased from Bioresource Collection and Research Center, Hsinchu, Taiwan and cultured at 37 °C in McCoy's5A [GIBCO (Life technologies), Grand Island, N.Y., U.S.A.], supplemented with 10 % (v/v) fetal bovine serum (FBS). UBUC J82 cells recognized as high grade was offered by Dr. Chien-Feng Li from Department of Pathology, Chi-Mei Medical Center, Tainan, Taiwan and maintained at 37 °C in Dulbecco's Modified Eagle Medium supplemented with 10 % (v/v) FBS (GIBCO, Grand Island, N.Y., U.S.A.). TSGH8301 cell (low grade) was derived from patients with superficial bladder cancer in Taiwan [14] and provided by Dr. Chien-Feng Li in 2010 from Department of Pathology, Chi-Mei Medical Center. TSGH8301 cell was cultivated at 37 °C in RPMI-1640 (GIBCO)/10 % (v/v) FBS.

Isoelectric focusing (IEF) and SDS-polyacrylamide gel electrophoresis (SDS-PAGE)

Preparation of protein lysates for two-dimensional gel electrophoresis was described in an additional file [Additional file 1]. IEF and SDS-PAGE was undertaken as

described before with some modifications [12]. The pH 4–7, 18-cm immobilized dry strips (GE Healthcare Bio-Sciences AB, Uppsala, Sweden) were rehydrated using BioRad Protean IEF Cell for 16 h at 20 °C with 300 μ l rehydration buffer containing 100 μ g protein lysates prepared from PEE-exposed or 0.5 % (v/v) DMSO (vehicle)-exposed T24 cells. The proteins were then focused at 20 °C at 50 V, 100 V, 200 V, 500 V, 1000 V, 5000 V and 8000 V respectively with a total of 81,434 voltage-hours.

Image analysis and statistical analysis

2-DE gels were stained with LavaPurple™ according to manufacturer's protocol described in brief in an additional file [Additional file 1]. Then the images of 2-DE gel map were scanned using Typhoon 9400 fluorescence scanner (GE healthcare) with green laser (green laser PMT: 600 volt and emission filter: 580 BP). To search for the de-regulated proteins in PEE-exposed T24 cells for 36 h, a total of 9 pairs of well-focused gel maps collected from control and PEE-treated T24 cells were compared by PDQuest 8.0.1 (BioRad) software. Dys-regulated expressed protein spots identified by computer analysis were further confirmed by visualization. The intensity of the spot was measured and normalized as a percentage of the total intensities of all spots in a gel (total normalized volume). For each differentially expressed protein spot normalized volumes of individual protein spots across replica gels of 0.5 % (v/v) DMSO- or PEE-incubated T24 cells were first analyzed by the normal distribution test and then Student's *t*-Test (STATISTICA, StatSoft, Tulsa, OK, U.S.A.) was carried out when normal distribution was obtained. However, when normal distribution was not acquired, log transformation was performed followed by the normal distribution test and Student's *t*-Test. In all cases, statistical variance of the PEE-exposed : control spot intensity ratio within 95 % (Student's *t*-Test; $P < 0.05$) was considered to be significantly different. Furthermore the differentially expressed proteins present at least in 5 out of 9 gel pairs were regarded as PEE-impacted proteins.

In-gel digestion and protein identification analysis via liquid chromatography-tandem mass spectrometry (LC-MS/MS)

The protein spots of interest were picked up for in-gel digestion using silver staining. The silver staining, in-gel digestion and mass spectrometric protein identification were performed as described previously [12]. Briefly, the protein digest was separated in LTQ-Orbitrap hybrid tandem mass spectrometer (ThermoFisher, USA) in-line coupled with Agilent 1200 nanoflow HPLC system equipped with LC Packing C18 PepMap 100 (length: 5 mm; internal diameter: 300 μ m; bead size: 5 μ m) as

the trap column and Agilent ZORBAX XDB-C18 (length: 50 mm; internal diameter: 75 μ m; bead size: 3.5 μ m) as the separating column. File Converter in Xcalibur 2.0SR package (ThermoFisher, USA) and an in-house program were used to extract the MS/MS information as well as to compute the charge and mass for each analyzed peptide. TurboSequest program (ver. 27, rev. 11) was then used to search the best matched peptides from a non-redundant protein database whose FASTA sequences were downloaded from National Center for Biotechnology Information (http://www.ncbi.nlm.nih.gov/guide/proteins/#tab-all_) on 2010/10/12 with 541927 entries. While only the tryptic peptides with ≤ 2 missed cuts were considered, the mass ranges during the database search were 1 and 3.5 m/z for fragment and precursor ions respectively. The protein identities were verified only when there were at least two peptides matched and both search results had high Xcore (i.e., ≥ 2.0 for doubly charged peptides and ≥ 3.0 for triply charged ones) and with minimal differences between observed and hypothetical masses (i.e., $\Delta M < 10$ ppm). For each set of MS/MS analyses, 25 fmol of BSA in gel was analyzed in parallel for verification of effectiveness of the entire protein identification procedure, including in-gel digestion, nanoflow HPLC, MS/MS and informatics analyses. The experimental data were only taken into account only when 10 ppm mass accuracy and over 70 % coverage was observed for the co-processed BSA sample.

Western immunoblotting

After treatment as described in section 3, T24 or J82 cells were harvested and lysed in lysis buffer [10 mM Tris (pH 8.0), 0.32 M sucrose, 1 % (v/v) Triton X-100, 5 mM EDTA, 2 mM DTT, and 1 mM PMSF]. After determining its protein concentration using Bio-Rad DC protein assay kit, equal volume of 2 \times sample buffer [0.1 M Tris (pH 6.8), 2 % (w/v) SDS, 0.2 % (v/v) β -mercaptoethanol, 10 % (v/v) glycerol, and 0.0016 % (w/v) bromophenol blue] was combined with the protein lysate. Appropriate amounts of the lysates were separated by electrophoresis at 100 V with 10 % (w/v) SDS-PAGE, and further transferred onto a PVDF membrane (Stratagene, La Jolla, CA, USA). After blocking for 1 h in 3 % (w/v) bovine albumin serum (BSA) at room temperature, membranes were hybridized overnight at room temperature with primary antibodies listed in an additional file [Additional file 1]. The membranes were washed and probed with suitable secondary antibodies for 1 h at room temperature. Secondary antibodies binding on the membrane were detected by chemiluminescence ECL detection system (GE Healthcare Bio-Sciences AB, Uppsala, Sweden) using Fujifilm LAS-3000 Luminescent Image Analyzer (Fujifilm Corporation, Tokyo, Japan). The intensity of each protein band, normalized with actin or

glyceraldehyde-3-phosphate dehydrogenase (GAPDH) protein expression level, was quantified by PDQUEST Quantity One software (Bio-Rad Laboratory, Hercules, CA) and analyzed with Student's *t*-Test (STATISTICA, StatSoft, Tulsa, OK, U.S.A.).

Results

Inhibitory impacts of PEE on outgrowth and migration of UBUC cell

Our previous documented data demonstrated that PEE might initiate a cascade of biochemical events to induce UBUC cell apoptosis. In this study, we found that PEE treatment temporally retarded T24 cell proliferation and also could slow down T24 cell migration. The comparable impacts were also observed in PEE-incubated J82 cells (Fig. 1). PEE incubation also exerted the inhibitory effects on low grade UBUC TSGH8301 cell proliferation (Fig. 1).

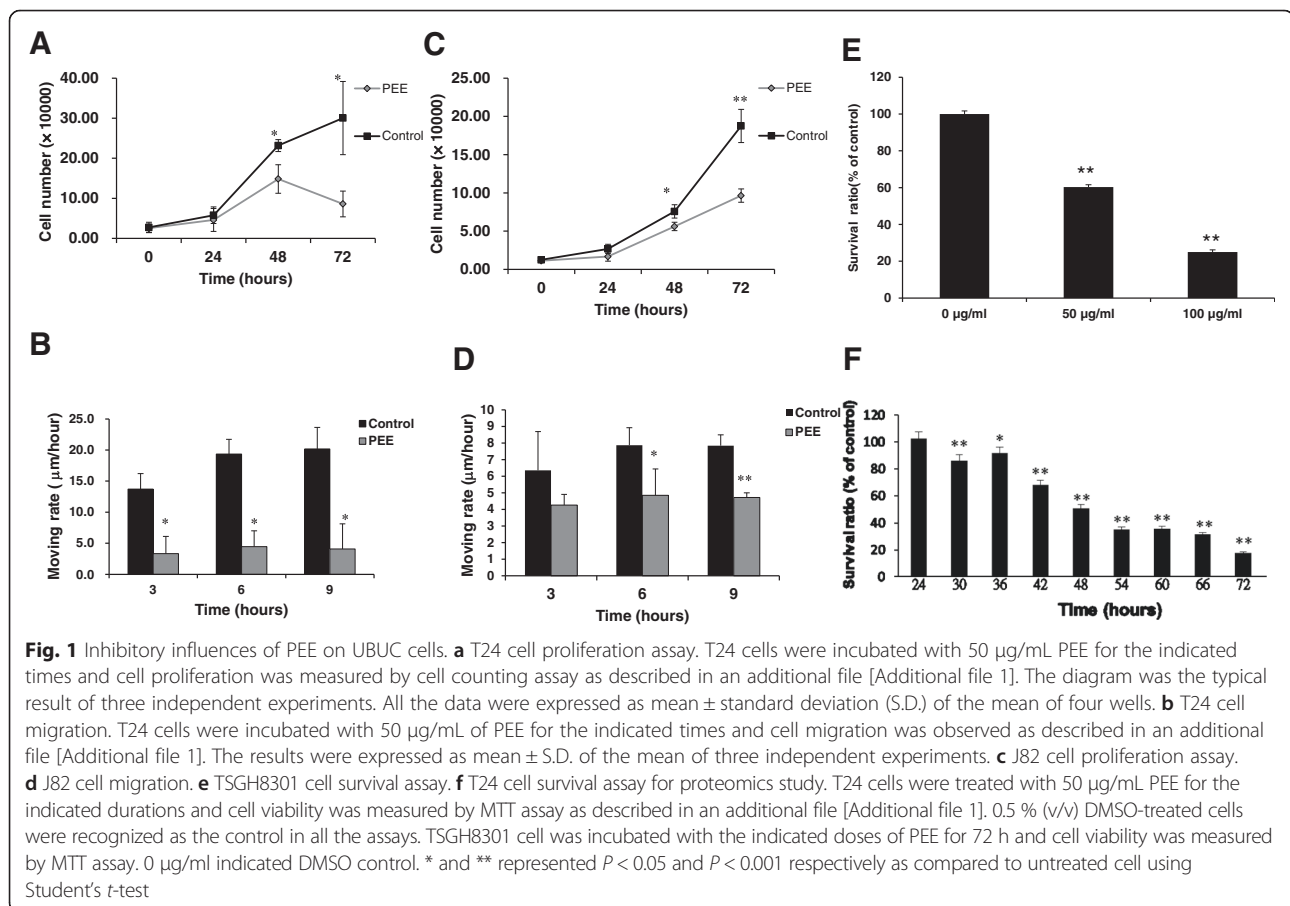
Two-dimensional gel electrophoresis of PEE-treated T24 cells

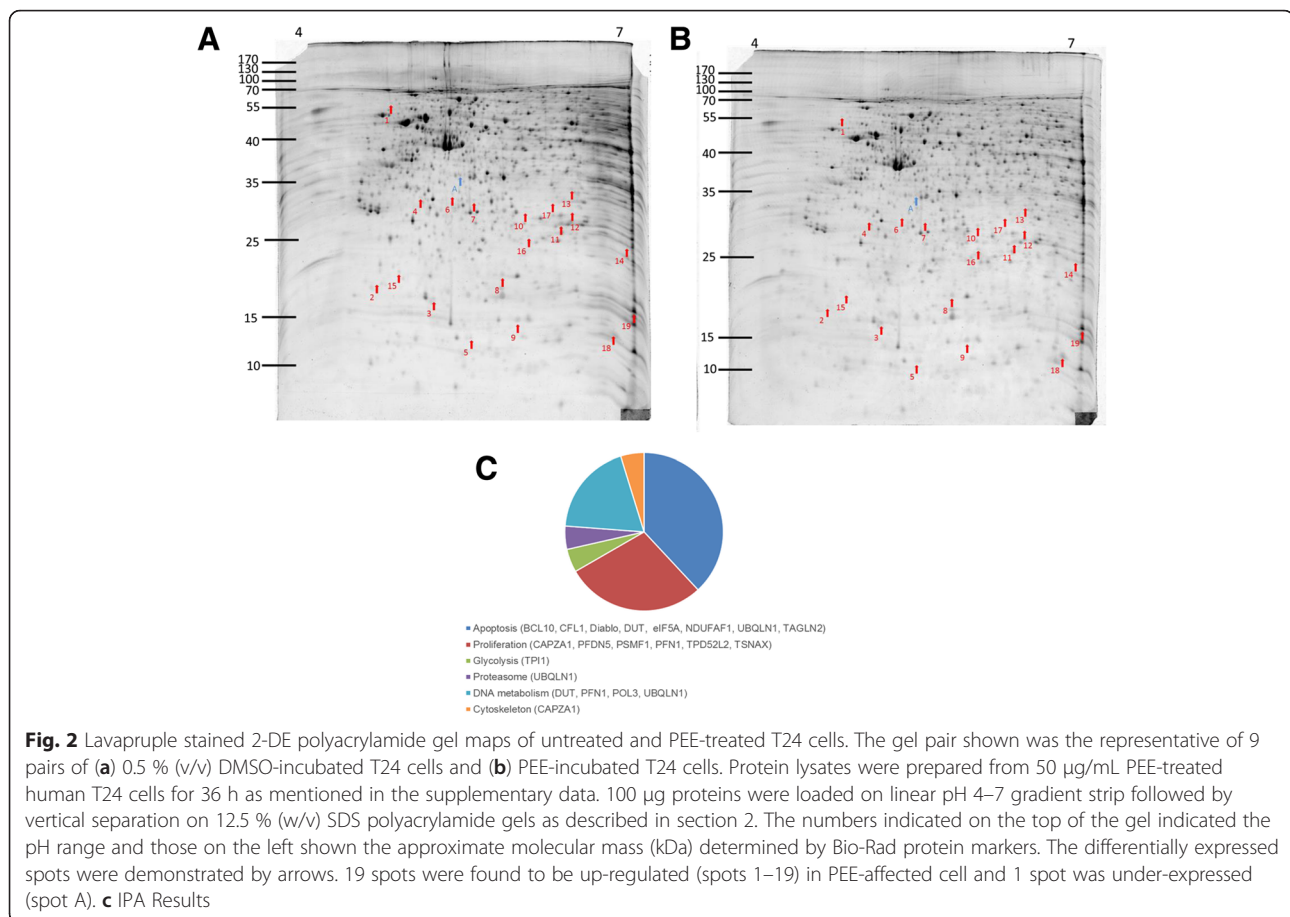
To uncover the molecular mechanism underlying the effects evoked by PEE, Lavapurple stained 2-DE gels coupled with LC-MS/MS were conducted to profile

protein expression and search for those proteins whose expressions were altered by PEE exposure. Since PEE treatment showed a better impact on T24 cell proliferation /migration, T24 cell was chosen for subsequent proteomics study. T24 cells treated for 36 h with or without 50 $\mu\text{g}/\text{mL}$ PEE were selected for 2-DE analyses because, as indicated by the results shown by Fig. 1f, sufficiently affected cells that were at the same time still viable could be collected and potentially relevant cellular changes prior to cell death could typically be observed in PEE-exposed T24 cells.

Initially 100 μg of proteins from mock and PEE-incubated T24 cells were loaded and separated by 2-DE of 18-cm gel strips (pI 4–7). To prevent the gel-to-gel variation, nine replicate gel pairs were collected from three independent treatments. The representative 2-DE maps of un-treated and PEE-treated T24 cells were depicted in Fig. 2 and the remaining 8 gel pairs were shown in an additional file [Additional file 1].

The proteome maps of control and PEE-exposed T24 cells were compared to recognize the protein spot variations. After PEE treatment, differentially expressed protein features were recorded as described in Methods. Nineteen up-regulated and one down-regulated protein





spots were found as denoted by the arrowed spots in Fig. 2. Spots 3, 18 and A were close to 2-fold but statistical significant ($P < 0.05$). The total normalized volume (ppm) and statistical result of each protein spot were presented in [Additional file 2: Table S1].

Identification of the differentially expressed proteins in PEE-influenced T24 cells

After the proteome comparison, de-regulated proteins were identified using LC-MS/MS as described in Methods. The results of spectrometric analyses were summarized in Table 1 and the matched peptides of each de-regulated protein were shown in [Additional file 2: Table S2]. The experimental molecular weight and pI of each protein spot were near the theoretical values, and most of the spectrometric protein coverages were above 20 %.

The over-expressed proteins (spots 1–19) and under-expressed proteins (spot A) were identified as described in Table 1. Results of Ingenuity pathway analysis (IPA) (Qiagen) showed that the identified de-regulated proteins were involved in cell apoptosis (BCL10, CFL1, Diablo, DUT, eIF5A, NDUFAF1, UBQLN1, TAGLN2), cell

proliferation (CAPZA1, PFDN5, PSMF1, PFN1, TPD52L2, TSNA), DNA metabolism (DUT, PFN1, POL3, UBQLN1), proteasome (UBQLN1), glycolysis (TPI1), cytoskeleton (CAPZA1) (Fig. 2c).

Confirmation of differentially expressed proteins

To validate our observation on the proteomics results, western immunoblotting was exploited to evaluate the expressions of Diablo, profilin 1, TPI1, NDUFAF1 and PSMF1/PI31. These five proteins were targeted based on their respective high-fold alterations except profilin 1 and potential relevance to cell proliferation and apoptosis. Consistent with the proteomics data, the results of western immunoblotting demonstrated that Diablo, profilin 1, TPI1, NDUFAF1 and PSMF1/PI31 were up-regulated in PEE-treated T24 cells for 36 h (Fig. 3).

Previous findings demonstrated that profilin 1 over-expression increases phosphatase and tensin homolog (PTEN) protein synthesis while PTEN gene up-regulation inhibits Akt activity [15, 16]. In accordance with previous findings our study showed that the exposure of T24 cell to 50 µg/mL PEE could raise PTEN gene expression probably due to

Table 1 Differentially expressed proteins identified by tandem mass spectrometry^a

Spot	Protein identity	Incidences	Experiment pI/MW (kDa)	Theoretical pI/MW (kDa)	Matched ^b peptide number	Coverage (%)	Accession number (NCBI)	Fold
1	ubiquilin 1 (UBQLN1)	5/9	4.8/56.2	5.2/62.5	10	10.34	119583063	+2.73
2	DNA polymerase ϵ subunit 3 (POLE3)	5/9	4.7/20.2	4.68/16.86	6	32.65	119607787	+7.58
3	eukaryotic translation initiation factor 5A (eIF5A)	6/9	5/19.6	5.07/16.83	4	36.36	119610625	+1.78
4	tumor protein D54 (TPD52L2)	6/9	4.9/29.9	5.26/22.24	8	44.66	11125673	+12.84
5	phosphohistidine phosphatase 1 (PHPT1)	6/9	5.3/17.6	5.65/13.83	2	22.4	11191302	+5.12
6	proteasome inhibitor subunit 1 (PSMF1/PI31)	5/9	5.1/32.3	5.42/29.82	6	25.83	10432572	+3.97
7	B-cell lymphoma/leukemia 10 (BCL 10)	5/9	5.3/31.8	5.57/26.25	3	12.02	119593614	+2.9
8	dUTP pyrophosphatase (DUT)	5/9	5.5/21.2	6.15/17.75	5	42.07	10257385	+6.81
9	prefoldin subunit 5 (PFDN5)	5/9	5.8/19	5.94/17.33	9	57.79	119617089	+2.51
10	peflin (PEF1)	7/9	5.8/30.8	4.84/28.22	7	23.6	119628003	+6.31
11	triosephosphate isomerase 1 (TPI1)	5/9	6.2/28	5.65/30.79	8	39.86	119609128	+6.27
12	26S proteasome non-ATPase regulatory subunit 9 (PSMD9)	5/9	6.3/30.5	6.46/24.68	2	9.42	119618700	+7.17
13	NADH dehydrogenase (ubiquinone) 1 α subcomplex assembly factor 1 (NDUF1)	5/9	6.3/34.9	7.11/37.76	4	17.43	119612893	+5.2
14	transgelin 2 (TAGLN2)	5/9	6.9/22.6	8.41/22.39	10	53.27	119573145	+3.2
15	Diablo (DIABLO)	5/9	4.8/21.5	5.67/27.16	10	43.51	10437144	+3.94
16	BCL2-associated athanogene 2 (BAG2)	5/9	5.9/26.3	6.25/23.77	9	43.60	115528700	+4.71
17	translin-associated factor X (TSNAX)	5/9	6.2/33.3	6.10/33.11	8	42.41	119590369	+6.54
18	profilin 1 (PFN1)	5/9	6.8/17.9	8.44/15.05	7	65.00	119610787	+1.57
19	cofilin (CFL1)	5/9	7.0/19.0	8.22/18.50	10	56.02	116848	+2.86
A	F-actin-capping protein subunit alpha-1 (CAPZA1)	5/9	5.2/36.8	5.45/32.92	10	41.26	119576929	-1.93

^aMatched peptide number: Number of peptides matched with protein in MS/MS query. Coverage: Total percentage of amino acid sequence covered by peptides identified by MS/MS analyses

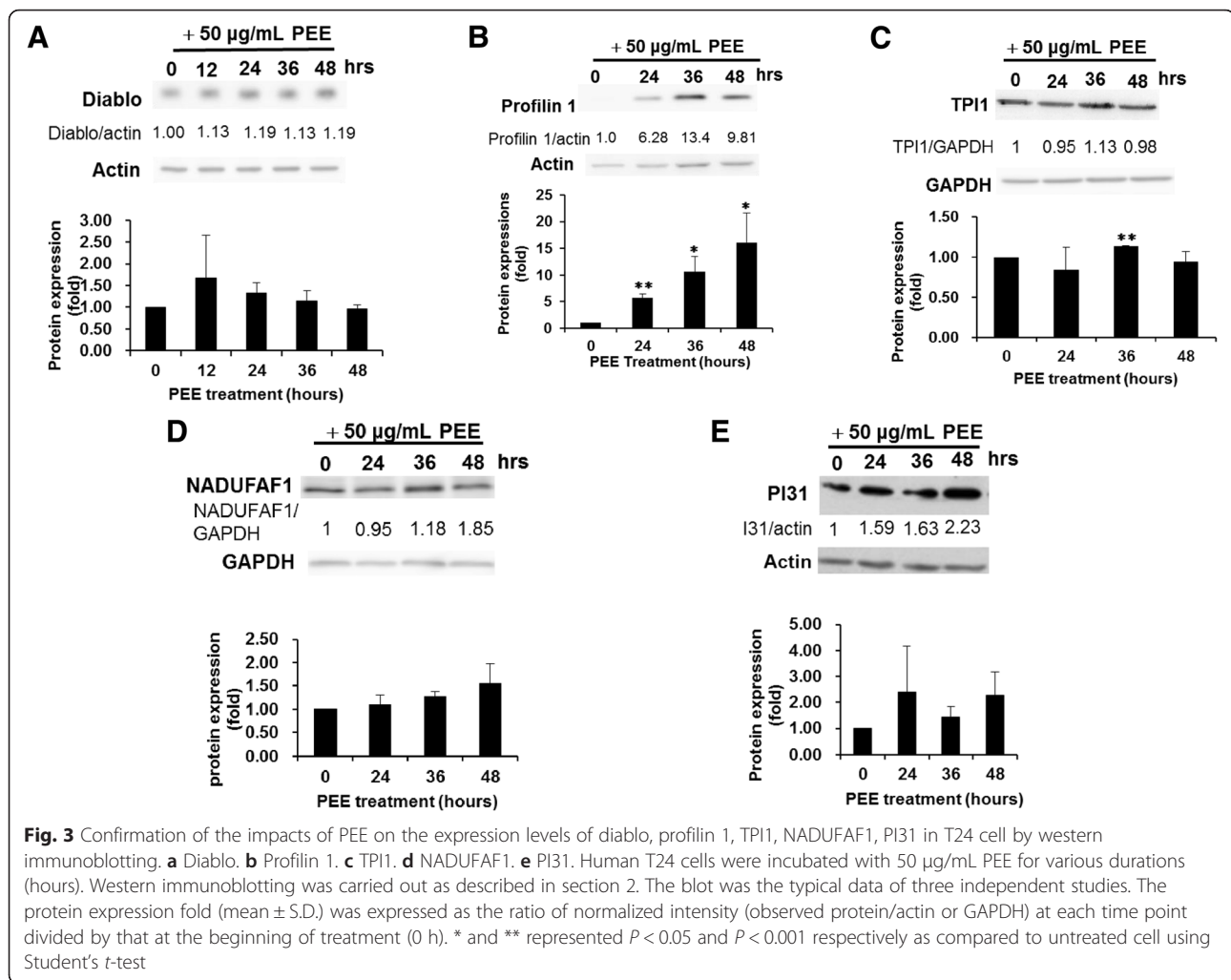
^bThe detail data of MS/MS identification for each peptide was provided in Additional file 2: Table S2, supporting information

profilin 1 over-expression and in turn dwindled phospho-Akt expression, which barely influenced Akt protein expression (Fig. 4). Furthermore, PEE treatment could inhibit the expression of mTOR phosphorylated at S2448, which is the catalytic subunit of mTORC1 complex [17] (Fig. 4) and thus might interfere with the nutrient metabolism or energy production in cancer cell. It has been suggested that mTORC1 contains mTOR phosphorylated predominantly on S2448 and inhibition of mTOR S2448 phosphorylation correlates with the decreased mTORC1 activity [17]. Reduced expression levels of p-Akt and downstream phosphorylated mTOR (S2448) were also observed in PEE-treated TSGH8301 cell (Fig. 5). The above results suggested that through the up-regulation of profilin 1 expression PEE exposure could inhibit Akt/mTOR pathway which plays a significant role in carcinogenesis.

Our results showed that PEE treatment cause increased PI31 gene expression, suggesting that proteasome activity might be inhibited in PEE-treated UBUC cell. Suppression

of proteasome activity may prevent activation/translocation of NF κ B to the nucleus to activate downstream pathways [18]. Results of western immunoblotting against RelA/p65 component of NF- κ B demonstrated that PEE treatment for 48 h decreased the amount of RelA/p65 both in the cytoplasm and nucleus of T24 cell (Fig. 4). RelA/p65 along with p50 subunit moves to nucleus to activate the target genes when NF- κ B is activated.

In the apoptotic pathway induced by damaged mitochondria, mitochondria release multiple pro-apoptotic proteins, such as Smac/Diablo, AIF, HtrA2 and EndoG along with cytochrome C. Smac/Diablo can bind to X-linked inhibitor of apoptosis protein (XIAP) and thus prevent XIAP to inhibit apoptosis [19]. Our results demonstrated that PEE incubation up-regulated Smac/Diablo expression (Fig. 3) while reduced XIAP expression (Fig. 4) in T24 cell and Diablo amount was also increased in PEE-treated TSGH8301 cell (Fig. 5), implicating that PEE treatment could induce apoptosis through damaged mitochondria.



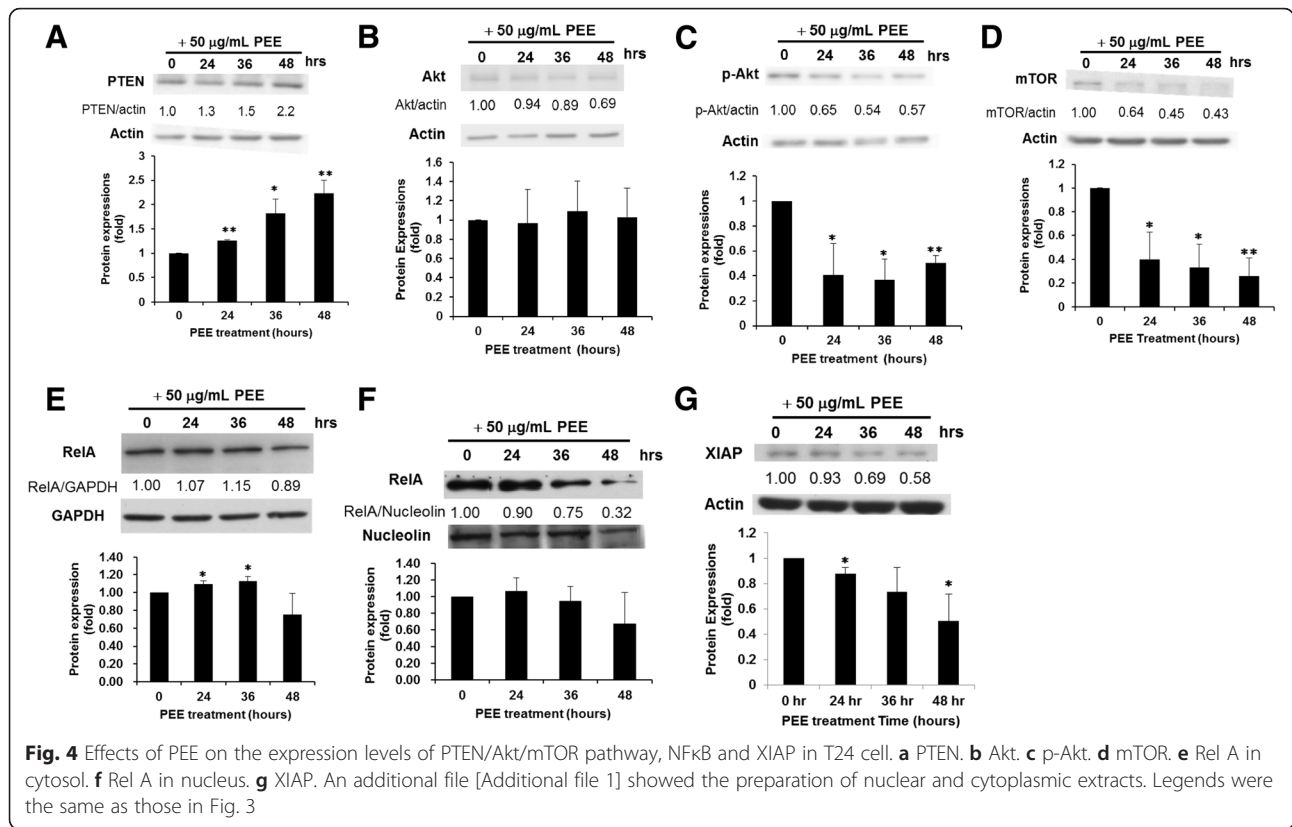
Discussion

Our previous studies have shown that PEE treatment could inhibit UBUC via evoking cell apoptosis [12]. In this study, we further found that PEE treatment could restrict UBUC cell proliferation and migration. To investigate the specific proteins affected by PEE incubation in UBUC cells, gel-based proteomics was carried out to shed light on the molecular mechanism underlying cancer intervention by PEE exposure through provoking cell apoptosis and inhibiting cell proliferation/migration. In this research, 20 differentially expressed proteins were found upon treatment of PEE to T24 cells with 19 up-regulated and 1 down-regulated proteins respectively.

Among de-regulated proteins, PHPT1 protein plays a role in lung cancer cell migration/invasion and is revealed to be associated with cytoskeleton reorganization [20]. Profilin 1 and Cofilin are the members of a family of actin-binding proteins, which participate in dynamic turnover and restructuring of actin cytoskeleton [15, 21]. Transgelin-2 is a cytoskeletal protein with actin-binding

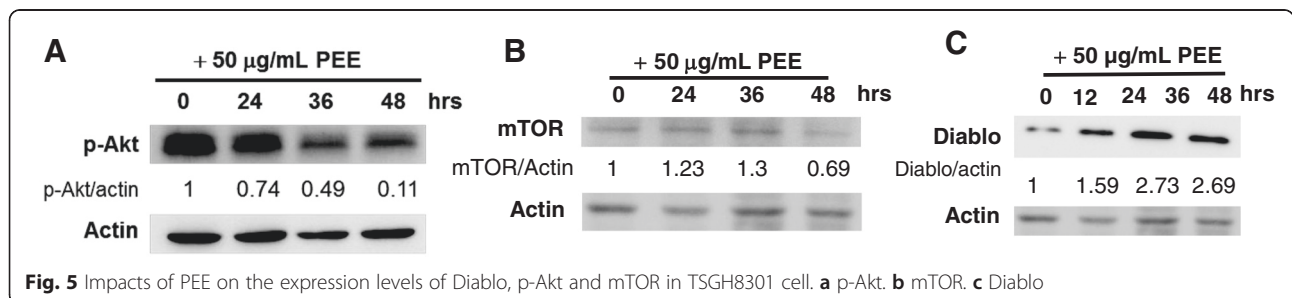
activity shown to be a tumor suppressor in colorectal carcinoma [22]. It has been postulated that cytoskeleton remodeling plays a pivotal role in cancer cell migration and also in regulating the morphologic and phenotypic events of a malignant cell. Besides, apoptosis is generally preceded by the pronounced changes of actin cytoskeleton [23]. Consistent with the above observations, results of this examination suggested that PEE treatment might provoke the rearrangement of cytoskeleton structure of UBUC cells through disturbing the expressions of cytoskeletal components and thus retard UBUC cell proliferation/migration. This study provided a clue for more investigation of the impacts of PEE on cytoskeleton structure in UBUC cell.

Previous documented findings demonstrated that augmented profilin 1 synthesis can increase PTEN gene expression in breast cancer cell [15]. PTEN protein serves as a phosphatase to dephosphorylate PIP₃ to become PIP₂. This dephosphorylation results in inhibition of Akt protein activity and thus Akt signaling pathway which



plays a central role in protein synthesis, metabolism and cell proliferation [16]. Akt can phosphorylate tuberlin/TSC2 to prevent the inhibition of mTORC1 complex (mTOR-raptor complex). mTORC1 integrates multiple signals to promote either cellular growth in favorable conditions or catabolic processes in unfavorable conditions while mTORC2 (mTOR-ricor complex) is related to actin organization. Many documented evidences indicated that impaired PTEN/Akt/mTOR signaling pathway plays a key role in tumorigenesis in many tumors [24]. In accordance with the aforementioned findings, our present data suggested that PEE treatment increased profilin 1 expression to up-regulate PTEN gene expression, which might in turn inhibited Akt/mTORC1 signaling pathway to prevent UBUC cell proliferation/migration.

The abnormal proteasomal activity contributes to tumorigenesis by offering cancer cell with anti-apoptotic protection and a survival advantage [25]. Our findings implicated that PEE treatment could alter the expressions of several genes associated with 26S proteasome activity (PSMD9, UBQLN1, PSMF1) in UBUC cells to disturb cell proliferation. PSMF1/PI31 can bind to 20S catalytic particle of 26S proteasome to hinder substrate access to the enzymatic core and thus results in the inhibition of proteasomal activity [26]. PSMD9 is a proteasomal assembly chaperone [27]. Ubiquitin-1 is thought to functionally link the ubiquitination machinery to the proteasome to effect in vivo protein degradation [28]. Suppression of proteasomal activity may prevent degradation of IκB (endogenous inhibitor of NF-κB) and subsequent activation/translocation of NFκB to the nucleus to



activate downstream pathways [29]. NF κ B plays an important role in tumorigenesis of many tumors by promoting cell proliferation, migration and suppression of apoptosis [18]. Our study indicated that PEE treatment could inhibit NF κ B activation possibly through evoking PSMF1/PI31 over-expression to prevent the proteasomal degradation of I κ B.

Among PEE-induced de-regulated proteins, BCL10, diablo, peflin, TPD52L2, eIF5A and BAG2 are shown to be involved in regulating cell apoptosis. Several findings suggested that BCL10 is an apoptotic regulatory protein and participates in Apaf1/caspase 9-mediated cell death pathway [30]. eIF5A is the only known protein to be regulated by the post-translational formation of a hypusine residue. Recent studies have indicated that unhyposinated eIF5A is pro-apoptotic and only observed during apoptosis [31]. Our proteomics data showed that PEE incubation could increase eIF5A gene expression but further investigation was required to determine whether unhyposinated eIF5A level was increased in PEE-treated T24 cell. TPD52L2 can interact with TPD52L1 protein which positively regulates apoptosis signal-regulating kinase 1 (ASK1)-induced apoptosis [32]. Peflin can regulate the activity of apoptosis-linked gene 2 (ALG-2) which associates with Fas-executed apoptosis [33]. In the apoptotic pathway, the caspase activities can be inhibited directly by inhibitor of apoptosis (IAP) protein [19]. During the mitochondrial apoptotic process, the inhibitory function of XIAP, a ubiquitous member of IAP family, can be antagonized by Smac/Diablo and Omi/HtrA2 which are also released from mitochondria along with cytochrome c. BAG2 exhibits pro-apoptotic properties and is demonstrated to be up-regulated in proteasome inhibitor-induced apoptosis in thyroid carcinoma cell [34]. Our present results demonstrated that PEE exposure could increase the aforementioned apoptotic proteins to provoke UBUC cell apoptosis.

Some of dys-regulated proteins evoked by PEE treatment might attribute to the mitochondrial damage and nuclear change (nuclear fragmentation, chromatin condensation and DNA fragmentation) which are the characteristics of cell apoptosis. Translin/TRAX protein complex (C3PO) plays roles in very important key cellular processes such as cell growth regulation, genome stability regulation and carcinogenesis [35]. NAUFAF1 is a chaperone protein involved in the assembly of the mitochondrial NADH:ubiquinone oxidoreductase complex (complex I) which transfers the electron from NADH to ubiquinone (coenzyme Q) in the first step of the mitochondrial respiratory chain [36]. Cancer cells proliferate very rapidly and rely on high metabolic activities. To meet high energy demand, tumor cells exploit aerobic glycolysis to acquire the energy from glucose (Warburg effect). During glycolysis only one of two

triosephosphates formed by aldolase-glyceraldehyde-3-phosphate is degraded in the subsequent steps. The other product, dihydroxyacetone phosphate, is rapidly and reversibly converted to glyceraldehyde-3-phosphate by TPI1 protein [37].

Conclusion

In conclusion, this study showed that exposure of UBUC cell to PEE might result in (1) apoptosis; (2) proteasome structure/activity alteration; (3) cytoskeleton rearrangement; (4) AKT/mTOR signaling pathway inhibition and (5) impaired aerobic glycolysis. Besides, IPA analyses showed that the de-regulated proteins were involved in apoptosis, proliferation, glycolysis, DNA metabolism. The results of this study provide a global picture to further investigate the anticancer molecular mechanism of PEE.

Additional files

Additional file 1: This file included extended experimental procedures as well as materials and additional 2-DE gel pairs. (DOCX 276 kb)

Additional file 2: Table S1. Statistical data for de-regulated proteins.

Table S2. Detail mass spectrometry data of matched peptides for protein identification. (DOCX 28 kb)

Abbreviations

ALG-2: apoptosis-linked gene 2; Akt/PKB: protein kinase B; BAG2: BCL2-associated athanogene 2; BCL 10: B-cell lymphoma/leukemia 10; CAPZA1: F-actin-capping protein subunit alpha-1; CFL1: C ofillin; DUT: dUTP pyrophosphatase; eIF5A: eukaryotic translation initiation factor 5A; HIF-1 α : hypoxia-inducible factor 1- α ; IEF: isoelectric focusing; IAP: inhibitor of apoptosis; LC-MS/MS: liquid chromatography-tandem mass spectrometry; mTORC1: mammalian target of rapamycin complex 1; NDUFAF1: NADH dehydrogenase (ubiquinone) 1 α subcomplex assembly factor 1; PE: pomegranate polyphenols, ellagitannin-rich extract; PEE: pomegranate fruit ethanol extract; PEF1: peflin; PFDN5: prefoldin subunit 5; PFE: Ellagitannin-rich Pomegranate fruit extract; PFN1: profilin 1; PHPT1: phosphohistidine phosphatase 1; POLE3: DNA polymerase ϵ subunit 3; PSMD9: 26S proteasome non-ATPase regulatory subunit 9; PSA: prostate-specific antigen; PSMF1/PI31: proteasome inhibitor subunit 1; PTEN: phosphatase and tensin homolog; TAGLN2: transgelin-2; TPD52L2: tumor protein D54; TPI1: triose phosphate isomerase 1; TSNA: translin-associated protein X; UBUC: urinary bladder urothelial carcinoma; UBQLN: ubiquilin 1; VEGF: vascular endothelial growth factor; XIAP: X-linked inhibitor of apoptosis protein.

Competing interests

The authors declare that they have no competing interests.

Authors' contributions

BXT carried out cell proliferation/migration assay and western immunoblotting studies for signaling pathway in T24 cell and prepared PEE. LTH conducted 2-DE and MTT assay for T24 cell. LHC performed western immunoblotting experiments for confirmation of proteomics data. TFW contributed to the conception and design of entire study, protein identification, data interpretation and the initial draft/final editing of the manuscript. Li-Yi Chen carried out MTT assay for TSGH8301 cell. Wan-Yin Shih performed western immunoblotting studies for signaling pathway in TSGH8301 cell. All authors have read and approved the manuscript for publication.

Acknowledgements

The authors would like to thank the Ministry of Science and Technology, Taiwan for financially supporting this research under Contract No. NSC 101-2632-B-218-001-MY3 and MOST 104-2320-B-218-001. We also want to thank the technical services (supports) provided by Proteomics Research Center of the National Yang-Ming University, Taiwan.

Received: 17 July 2015 Accepted: 2 March 2016

Published online: 09 March 2016

References

- Siegel R, Ward E, Brawley O, Jemal A. Cancer statistics, 2011. *CA Cancer J Clin.* 2011;61:212–36.
- Bureau of Health Promotion, Department of Health, The Executive Yuan, Taiwan, Cancer Registry Annual report, 2011.
- Stein JP, Grossfeld GD, Ginsberg DA, Esrig D, Freeman JA, Figueroa AJ, et al. Prognostic markers in bladder cancer: a contemporary review of the literature. *J Urol.* 1998;160:645–59.
- Zieger K, Wolf H, Olsen PR, Hojgaard K. Long-term follow-up of noninvasive bladder tumours (stage Ta): recurrence and progression. *BJU Int.* 2000;85:824–8.
- Gil MI, Tomás-Barberán FA, Hess-Pierce B, Holcroft DM, Kader AA. Antioxidant activity of pomegranate juice and its relationship with phenolic composition and processing. *J Agric Food Chem.* 2000;48:4581–9.
- Khan N, Hadi N, Afaq F, Syed DN, Kweon MH, Mukhtar H. Pomegranate fruit extract inhibits prosurvival pathways in human A549 lung carcinoma cells and tumor growth in athymic nude mice. *Carcinogenesis.* 2007;28:163–73.
- Khan N, Afaq F, Kweon MH, Kim K, Mukhtar H. Oral consumption of pomegranate fruit extract inhibits growth and progression of primary lung tumors in mice. *Cancer Res.* 2007;67:3475–82.
- Malik A, Afaq F, Sarfaraz S, Adhami VM, Syed DN, Mukhtar H. Pomegranate fruit juice for chemoprevention and chemotherapy of prostate cancer. *Proc Natl Acad Sci U S A.* 2005;102:14813–8.
- Rettig MB, Heber D, An J, Seeram NP, Rao JY, Liu H, et al. Pomegranate extract inhibits androgen-independent prostate cancer growth through a nuclear factor-kappa B-dependent mechanism. *Mol Cancer Ther.* 2008;7:2662–71.
- Sartippour MR, Seeram NP, Rao JY, Moro A, Harris DM, Henning SM, et al. Ellagitannin-rich pomegranate extract inhibits angiogenesis in prostate cancer in vitro and in vivo. *Int J Oncol.* 2008;32:475–80.
- Pantuck AJ, Leppert JT, Zomorodian N, Aronson W, Hong J, Barnard RJ, et al. Phase II study of pomegranate juice for men with rising prostate-specific antigen following surgery or radiation for prostate cancer. *Clin Cancer Res.* 2006;12:4018–26.
- Lee ST, Wu YL, Chien LH, Chen ST, Tzeng YK, Wu TF. Proteomic exploration of the impacts of pomegranate fruit juice on the global gene expression of prostate cancer cell. *Proteomics.* 2012;12:3251–62.
- Lee ST, Lu MH, Chien LH, Wu TF, Huang LC, Liao GI. Suppression of urinary bladder urothelial carcinoma cell by the ethanol extract of pomegranate fruit through cell cycle arrest and apoptosis. *BMC Complement Altern Med.* 2013;13:364.
- Yeh MY, Yü DS, Chen SC, Lin MS, Chang SY, Ma CP, et al. Establishment and characterization of a human urinary bladder carcinoma cell line (TSGH-8301). *J Surg Oncol.* 1998;37:177–84.
- Das T, Bae YH, Wells A, Roy P. Profilin-1 overexpression upregulates PTEN and suppresses AKT activation in breast cancer cells. *J Cell Physiol.* 2009;218:436–43.
- Carnero A, Blanco-Aparicio C, Renner O, Link W, Leal JF. The PTEN/PI3K/AKT signalling pathway in cancer, therapeutic implications. *Curr Cancer Drug Targets.* 2008;8:187–98.
- Rosner M, Siegel N, Valli A, Fuchs C, Hengstschiäger M. mTOR phosphorylated at S2448 binds to raptor and rictor. *Amino Acids.* 2010;38:223–8.
- Bu R, Hussain AR, Al-Obaisi KA, Ahmed M, Uddin S, Al-Kuraya KS. Bortezomib inhibits proteasomal degradation of IκB α and induces mitochondrial dependent apoptosis in activated B-cell diffuse large B-cell lymphoma. *Leuk Lymphoma.* 2014;55:415–24.
- Gao Z, Tian Y, Wang J, Yin Q, Wu H, Li YM, et al. A dimeric Smac/diablo peptide directly relieves caspase-3 inhibition by XIAP. Dynamic and cooperative regulation of XIAP by Smac/Diablo. *J Biol Chem.* 2007;282:30718–27.
- Xu A, Hao J, Zhang Z, Tian T, Jiang S, Hao J, et al. 14-kDa phosphohistidine phosphatase and its role in human lung cancer cell migration and invasion. *Lung Cancer.* 2010;67:48–56.
- McGough A, Pope B, Chiu W, Weeds A. Cofilin changes the twist of F-actin: implications for actin filament dynamics and cellular function. *J Cell Biol.* 1997;138:771–81.
- Zhao L, Wang H, Deng YJ, Wang S, Liu C, Jin H, et al. Transgelin as a suppressor is associated with poor prognosis in colorectal carcinoma patients. *Mod Pathol.* 2009;22:786–96.
- Ndozangue-Tourigoue O, Hamelin J, Bréard J. Cytoskeleton and apoptosis. *Biochem Pharm.* 2008;76:11–8.
- Hay N. The Akt-mTOR tango and its relevance to cancer. *Cancer Cell.* 2005;8:179–83.
- Mani A, Gelmann EP. The ubiquitin-proteasome pathway and its role in cancer. *J Clin Oncol.* 2005;23:4776–89.
- McCutchen-Maloney SL, Matsuda K, Shimbara N, Binns DD, Tanaka K, Slaughter CA, et al. cDNA cloning, expression, and functional characterization of PI31, a proline-rich inhibitor of the proteasome. *J Biol Chem.* 2000;275:18557–65.
- Kaneko T, Hamazaki J, Iemura S, Sasaki K, Furuyama K, Natsume T, et al. Assembly pathway of the mammalian proteasome base subcomplex is mediated by multiple specific chaperones. *Cell.* 2009;137:914–25.
- Kleijnen MF, Shih AH, Zhou P, Kumar S, Soccio RE, Kedersha NL, et al. The hPLIC proteins may provide a link between the ubiquitination machinery and the proteasome. *Mol Cell.* 2000;6:409–19.
- Deng L, Wang C, Spencer E, Yang L, Braun A, You J, et al. Activation of the IκappaB kinase complex by TRAF6 requires a dimeric ubiquitin-conjugating enzyme complex and a unique polyubiquitin chain. *Cell.* 2000;103:351–61.
- Srinivasula SM, Ahmad M, Lin JH, Poyet JL, Fernandes-Alnemri T, Tsichlis PN, et al. CLAP, a novel caspase recruitment domain-containing protein in the tumor necrosis factor receptor pathway, regulates NF-kappaB activation and apoptosis. *J Biol Chem.* 1999;274:17946–54.
- Sun Z, Cheng Z, Taylor CA, McConkey BJ, Thompson JE, Thompson, Apoptosis induction by eIF5A1 involves activation of the intrinsic mitochondrial pathway. *J Cell Physiol.* 2010;223:798–809.
- Cho S, Ko HM, Kim JM, Lee JA, Park JE, Jang MS, et al. Positive regulation of apoptosis signal-regulating kinase 1 by hD53L1. *J Biol Chem.* 2004;279:16050–6.
- Kitaura Y, Matsumoto S, Satoh H, Hitomi K, Maki M. Peflin and ALG-2, members of the penta-EF-hand protein family, form a heterodimer that dissociates in a Ca²⁺-dependent manner. *J Biol Chem.* 2001;276:14053–8.
- Wang HQ, Zhang HY, Hao FJ, Meng X, Guan Y, Du ZX. Induction of BAG2 protein during proteasome inhibitor-induced apoptosis in thyroid carcinoma cells. *Br J Pharmacol.* 2008;155:655–60.
- Jaendling A, McFarlane RJ. Biological roles of translin and translin-associated factor-X: RNA metabolism comes to the fore. *Biochem J.* 2010;429:225–34.
- Küffner R, Rohr A, Schmiede A, Krüll C, Schulte U. Involvement of two novel chaperones in the assembly of mitochondrial NADH: Ubiquinone oxidoreductase (complex I). *J Mol Biol.* 1998;283:409–17.
- Marsh L, Shah K. Novel inhibitor of mammalian triosephosphate isomerase found by an in silico approach. *Int J Med Chem.* 2014;2014:469125.

Submit your next manuscript to BioMed Central and we will help you at every step:

- We accept pre-submission inquiries
- Our selector tool helps you to find the most relevant journal
- We provide round the clock customer support
- Convenient online submission
- Thorough peer review
- Inclusion in PubMed and all major indexing services
- Maximum visibility for your research

Submit your manuscript at
www.biomedcentral.com/submit

