

(4-Benzyl-2-oxo-1,3-oxazolidin-5-yl)-methyl methanesulfonateWilson Cunico,^a Claudia R. B. Gomes,^b Edward R. T. Tiekink,^{c*} Walcimar T. Vellasco Junior,^b James L. Wardell^{d‡} and Solange M. S. V. Wardell^e^aDepartamento de Química Orgânica, Universidade Federal de Pelotas (UFPel), Campus Universitário, s/n°, Caixa Postal 354, 96010-900 Pelotas, RS, Brazil,^bFundação Oswaldo Cruz, Instituto de Tecnologia em Fármacos—Farmanguinhos, R. Sizenando Nabuco 100, Manguinhos, 21041-250 Rio de Janeiro, RJ, Brazil,^cDepartment of Chemistry, University of Malaya, 50603 Kuala Lumpur, Malaysia,^dCentro de Desenvolvimento Tecnológico em Saúde (CDTS), Fundação Oswaldo Cruz (FIOCRUZ), Casa Amarela, Campus de Manguinhos, Av. Brasil 4365, 21040-900 Rio de Janeiro, RJ, Brazil, and ^eCHEMSOL, 1 Harcourt Road, Aberdeen AB15 5NY, Scotland

Correspondence e-mail: edward.tiekink@gmail.com

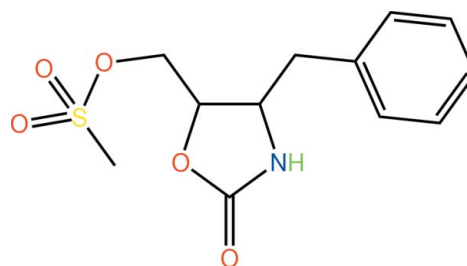
Received 21 December 2009; accepted 21 December 2009

Key indicators: single-crystal X-ray study; $T = 120$ K; mean $\sigma(\text{C}-\text{C}) = 0.006$ Å; R factor = 0.057; wR factor = 0.123; data-to-parameter ratio = 14.6.

The title compound, $\text{C}_{12}\text{H}_{15}\text{NO}_5\text{S}$, features an approximately planar five-membered oxazolidin ring (r.m.s. deviation = 0.045 Å) with the peripheral benzyl and methyl methanesulfonate residues lying to either side of the plane. In the crystal, $\text{N}-\text{H}\cdots\text{O}$ hydrogen bonds, involving one of the sulfur-bound oxo groups as acceptor, lead to the formation of supramolecular chains along the b axis. These chains are reinforced by $\text{C}-\text{H}\cdots\text{O}$ contacts with the carbonyl O atom accepting three such interactions. The structure was refined as a racemic twin, with the major component being present 89% of the time.

Related literature

For the use of 1,3-oxazolidin-2-ones as chiral auxiliaries in organic synthesis, see: Evans *et al.* (1981); Ager *et al.* (1996, 1997); Hintermann & Seebach (1998). For their biological activity, see: Poce *et al.* (2008); Brickner *et al.* (2008); Means *et al.* (2006); Kaiser *et al.* (2007); Clemmet & Markham (2000); Ebner *et al.* (2008); Negwer & Scharnow (2007); Mai *et al.* (2003). For background to their syntheses, see: Ochoa-Terán & Rivero (2008); Zappia *et al.* (2007).

**Experimental***Crystal data* $\text{C}_{12}\text{H}_{15}\text{NO}_5\text{S}$ $M_r = 285.31$ Monoclinic, $P2_1$ $a = 8.7332$ (5) Å $b = 5.8757$ (3) Å $c = 12.9650$ (7) Å $\beta = 103.317$ (3)° $V = 647.39$ (6) Å³ $Z = 2$ Mo $K\alpha$ radiation $\mu = 0.27$ mm⁻¹ $T = 120$ K $0.26 \times 0.08 \times 0.02$ mm*Data collection*

Nonius KappaCCD area-detector diffractometer

Absorption correction: multi-scan (SADABS; Sheldrick, 2007)

 $T_{\min} = 0.700$, $T_{\max} = 1.000$

6748 measured reflections

2587 independent reflections

2266 reflections with $I > 2\sigma(I)$ $R_{\text{int}} = 0.059$ *Refinement* $R[F^2 > 2\sigma(F^2)] = 0.057$ $wR(F^2) = 0.123$ $S = 1.11$

2587 reflections

177 parameters

2 restraints

H atoms treated by a mixture of independent and constrained refinement

 $\Delta\rho_{\text{max}} = 0.33$ e Å⁻³ $\Delta\rho_{\text{min}} = -0.36$ e Å⁻³**Table 1**

Hydrogen-bond geometry (Å, °).

$D-H\cdots A$	$D-H$	$H\cdots A$	$D\cdots A$	$D-H\cdots A$
$\text{N1}-\text{H1N}\cdots\text{O2}^{\text{i}}$	0.88 (2)	2.28 (2)	3.113 (5)	160 (4)
$\text{C1}-\text{H1B}\cdots\text{O5}^{\text{ii}}$	0.98	2.51	3.428 (6)	155
$\text{C2}-\text{H2A}\cdots\text{O5}^{\text{ii}}$	0.99	2.32	3.214 (5)	150
$\text{C5}-\text{H5}\cdots\text{O5}^{\text{iii}}$	1.00	2.36	3.326 (6)	162
$\text{C6}-\text{H6B}\cdots\text{O1}^{\text{iv}}$	0.99	2.59	3.528 (6)	158

Symmetry codes: (i) $-x, y + \frac{1}{2}, -z + 1$; (ii) $-x, y - \frac{1}{2}, -z + 1$; (iii) $x, y - 1, z$; (iv) $-x + 1, y - \frac{1}{2}, -z + 1$.

Data collection: COLLECT (Hooft, 1998); cell refinement: DENZO (Otwinowski & Minor, 1997) and COLLECT; data reduction: DENZO and COLLECT; program(s) used to solve structure: SHELXS97 (Sheldrick, 2008); program(s) used to refine structure: SHELXL97 (Sheldrick, 2008); molecular graphics: ORTEP-3 (Farrugia, 1997) and DIAMOND (Brandenburg, 2006); software used to prepare material for publication: publCIF (Westrip, 2010).

The use of the EPSRC X-ray crystallographic service at the University of Southampton, England, and the valuable assistance of the staff there is gratefully acknowledged. JLW acknowledges support from CAPES (Brazil).

Supplementary data and figures for this paper are available from the IUCr electronic archives (Reference: HB5289).

‡ Additional correspondence author, e-mail: j.wardell@abdn.ac.uk.

References

- Ager, D. J., Prakash, I. & Schaad, D. R. (1996). *Chem. Rev.* **96**, 835–876.
- Ager, D. J., Prakash, I. & Schaad, D. R. (1997). *Aldrichim. Acta*, **30**, 3–11.
- Brandenburg, K. (2006). *DIAMOND*. Crystal Impact GbR, Bonn, Germany.
- Brickner, S. J., Barbachyn, M. R., Hutchinson, D. K. & Manninen, P. R. (2008). *J. Med. Chem.* **51**, 1981–1990.
- Clemmet, D. & Markham, A. (2000). *Drugs*, **59**, 815–827.
- Ebner, D. C., Culhane, J. C., Winkelman, T. N., Haustein, M. D., Ditty, J. L. & Ippoliti, J. T. (2008). *Bioorg. Med. Chem.* **16**, 2651–2656.
- Evans, D. A., Bartroli, J. & Shih, T. L. (1981). *J. Am. Chem. Soc.* **103**, 2127–2129.
- Farrugia, L. J. (1997). *J. Appl. Cryst.* **30**, 565.
- Hintermann, T. & Seebach, D. (1998). *Helv. Chim. Acta*, **81**, 2093–2126.
- Hoof, R. W. W. (1998). *COLLECT*. Nonius BV, Delft, The Netherlands.
- Kaiser, C., Cunico, W., Pinheiro, A. C., de Oliveira, A. G. & Souza, M. V. N. (2007). *Rev. Brás. Farm.* **88**, 83–88.
- Mai, A., Artico, M., Esposito, M., Ragno, R., Sbardella, G. & Massa, S. (2003). *Il Farmaco*, **58**, 231–241.
- Means, J. A., Katz, S., Nayek, A., Anupm, R., Hines, J. V. & Bergmeier, S. C. (2006). *Bioorg. Med. Chem. Lett.* **16**, 3600–3604.
- Negwer, M. & Scharnow, H. G. (2007). *Organic Chemical Drugs and Their Synonyms*, 9th ed. Weinheim, Germany: Wiley-VCH.
- Ochoa-Terán, A. & Rivero, I. A. (2008). *Arkivoc*, pp. 330–343.
- Otwinowski, Z. & Minor, W. (1997). *Methods in Enzymology*, Vol. 276, *Macromolecular Crystallography, Part A*, edited by C. W. Carter Jr & R. M. Sweet, pp. 307–326. New York: Academic Press.
- Poce, G., Zappia, G., Porretta, G. C., Botta, B. & Biava, M. (2008). *Exp. Opin. Ther. Patents*, **18**, 97–121.
- Sheldrick, G. M. (2007). *SADABS*. Bruker AXS Inc., Madison, Wisconsin, USA.
- Sheldrick, G. M. (2008). *Acta Cryst.* **A64**, 112–122.
- Westrip, S. P. (2010). *publCIF*. In preparation.
- Zappia, G., Gacs-Baitz, E., Delle Monache, G., Misiti, D., Nevola, L. & Botta, B. (2007). *Curr. Org. Synth.* **4**, 81–135.

supplementary materials

Acta Cryst. (2010). E66, o267-o268 [doi:10.1107/S1600536809055020]

(4-Benzyl-2-oxo-1,3-oxazolidin-5-yl)methyl methanesulfonate

W. Cunico, C. R. B. Gomes, E. R. T. Tiekink, W. T. Vellasco Junior, J. L. Wardell and S. M. S. V. Wardell

Comment

1,3-Oxazolidin-2-ones have found use initially as chiral auxiliaries in organic synthesis (Evans *et al.*, 1981; Ager *et al.*, 1996, 1997; Hintermann & Seebach 1998) and more recently in various biological applications, *e.g.*, as a class of synthetic antibacterial agents with potent activity against clinically important susceptible and resistant Gram-positive and anaerobic pathogens (Poce *et al.*, 2008; Brickner *et al.*, 2008; Means *et al.*, 2006; Kaiser *et al.*, 2007; Clemmet & Markham, 2000; Ebner *et al.*, 2008), as interneuron blocking agents or depressants of central synaptic transmission, muscle relaxants, anti-convulsants, and tranquilizers (Negwer & Scharnow, 2007), and as potent and selective monoamine oxidase type A (MAO) inhibitors (Mai *et al.*, 2003). The syntheses of 1,3-oxazolidin-2-ones have been variously reported (Ochoa-Terán & Rivero, 2008; Zappia *et al.*, 2007).

The oxazolidin ring in (I), Fig. 1, is essentially planar with the maximum deviations of 0.036 (5) Å for atom C5 and -0.040 (4) Å for atom N1. The O5 atom lies 0.089 (3) Å out of the plane in the direction of the C2 atom, and the C6 atom is below the plane. The C2–C3–C5–C6 torsion angle of 124.6 (4) ° shows a significant twist consistent with the methanesulfonate residue being splayed out from the rest of the molecule. The methanesulfonate-methyl group is oriented towards the ring-O4 atom.

Supramolecular chains are formed in the crystal structure of (I) along the *b* direction. These are sustained by N—H···O hydrogen bonds where the oxygen acceptor is an sulfur-bound oxo group, Fig. 2 and Table 1. Three close C—H···O-carbonyl contacts, Table 1, provide additional stability to the chain. Chains are linked into supramolecular arrays in the *bc* plane via weaker C—H···O contacts and these stack along the *a* axis, Fig. 3 and Table 1.

Experimental

A solution of (4*S*,5*R*)-4-benzyl-5-(hydroxymethyl)-1,3-oxazolidin-2-one (1.036 g, 5 mmol) and methanesulfonyl chloride (0.75 ml, 10 mmol) in triethylamine (10 ml) was stirred at room temperature for 2 h, HCl (20 ml, 15%) was added and the mixture was extracted with dichloromethane (5 x 20 ml). The combined organic layers were washed with brine, dried over anhydrous Na₂SO₄ and evaporated, giving (I) as a brown solid (0.62 g, 44%) which was recrystallized from aqueous ethanol. ¹H-NMR (MeOD, 400 MHz): δ 7.30 (m, 5H, Ph), 4.57 (m, 1H, CHO), 4.23 (dd, 1H, ¹J = 11.6; ²J = 3.0 Hz, CH₂O), 4.11 (dd, 1H, ¹J = 11.6; ²J = 4.9 Hz, CH₂O), 4.00 (m, 1H, CHN), 3.05 (s, 3H, CH₃), 2.92 (m, 2H, CH₂Ph) p.p.m.; NH not obs. ¹³C-NMR (MeOD, 100 MHz): 160.4 (C=O), 137.1–128.2 (Ph), 79.5 (CHO), 70.4 (CH₂O), 56.3 (CHN), 41.7 (CH₂Ph), 37.4 (CH₃) p.p.m. MS (*m/z*): MH⁺ 286.2.

Refinement

The C-bound H atoms were geometrically placed (C–H = 0.95–1.00 Å) and refined as riding with $U_{iso}(H) = 1.2–1.5U_{eq}(C)$. The methyl H atoms were rotated to fit the electron density. The N–H atom was located in a difference map and refined

supplementary materials

with the distance restraint $N-H = 0.88 \pm 0.01$ and with $U_{iso}(H) = 1.2U_{eq}(N)$. The structure was refined as a racemic twin precluding the determination of the absolute structure.

Figures

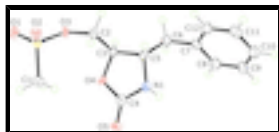


Fig. 1. The molecular structure of (I) showing displacement ellipsoids at the 50% probability level.

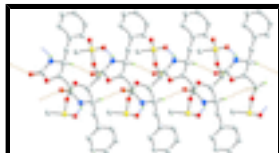


Fig. 2. A view of the supramolecular chain in (I) mediated by $N-H \cdots O$ hydrogen bonding and $C-H \cdots O$ contacts, shown as blue and orange dashed lines, respectively. Hydrogen atoms not involved in intermolecular contacts sustaining the chain are omitted for reasons of clarity. Colour code: S, yellow; O, red; N, blue; C, grey; and H, green.

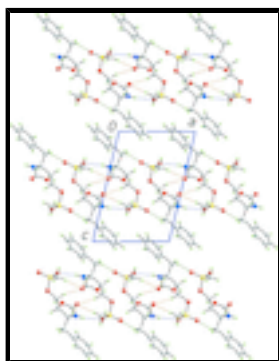


Fig. 3. A view of the stacking of layers in (I) with partial the interdigitation of the benzene rings. The $N-H \cdots O$ hydrogen bonding and $C-H \cdots O$ contacts stabilizing the supramolecular chains are shown as blue and orange dashed lines, respectively. The $C-H \cdots O$ contacts connecting the chains into layers are shown as green dashed lines. Colour code: S, yellow; O, red; N, blue; C, grey; and H, green.

(4-Benzyl-2-oxo-1,3-oxazolidin-5-yl)methyl methanesulfonate

Crystal data

$C_{12}H_{15}NO_5S$

$M_r = 285.31$

Monoclinic, $P2_1$

Hall symbol: P 2yb

$a = 8.7332$ (5) Å

$b = 5.8757$ (3) Å

$c = 12.9650$ (7) Å

$\beta = 103.317$ (3)°

$V = 647.39$ (6) Å³

$Z = 2$

$F(000) = 300$

$D_x = 1.464$ Mg m⁻³

Mo $K\alpha$ radiation, $\lambda = 0.71073$ Å

Cell parameters from 7909 reflections

$\theta = 2.9$ – 27.5 °

$\mu = 0.27$ mm⁻¹

$T = 120$ K

Plate, colourless

$0.26 \times 0.08 \times 0.02$ mm

Data collection

Nonius KappaCCD area-detector diffractometer

2587 independent reflections

Radiation source: Enraf Nonius FR591 rotating anode

2266 reflections with $I > 2\sigma(I)$

10 cm confocal mirrors

$R_{int} = 0.059$

Detector resolution: 9.091 pixels mm⁻¹ $\theta_{\max} = 26.5^\circ$, $\theta_{\min} = 3.2^\circ$
 φ and ω scans $h = -8 \rightarrow 10$
 Absorption correction: multi-scan
 (SADABS; Sheldrick, 2007) $k = -7 \rightarrow 7$
 $T_{\min} = 0.700$, $T_{\max} = 1.000$ $l = -16 \rightarrow 14$
 6748 measured reflections

Refinement

Refinement on F^2 Primary atom site location: structure-invariant direct methods
 Least-squares matrix: full Secondary atom site location: difference Fourier map
 $R[F^2 > 2\sigma(F^2)] = 0.057$ Hydrogen site location: inferred from neighbouring sites
 $wR(F^2) = 0.123$ H atoms treated by a mixture of independent and constrained refinement
 $S = 1.11$ $w = 1/[\sigma^2(F_o^2) + 1.5106P]$
 2587 reflections where $P = (F_o^2 + 2F_c^2)/3$
 177 parameters $(\Delta/\sigma)_{\max} < 0.001$
 2 restraints $\Delta\rho_{\max} = 0.33 \text{ e } \text{\AA}^{-3}$
 $\Delta\rho_{\min} = -0.36 \text{ e } \text{\AA}^{-3}$

Special details

Geometry. All s.u.'s (except the s.u. in the dihedral angle between two l.s. planes) are estimated using the full covariance matrix. The cell s.u.'s are taken into account individually in the estimation of s.u.'s in distances, angles and torsion angles; correlations between s.u.'s in cell parameters are only used when they are defined by crystal symmetry. An approximate (isotropic) treatment of cell s.u.'s is used for estimating s.u.'s involving l.s. planes.

Refinement. Refinement of F^2 against ALL reflections. The weighted R -factor wR and goodness of fit S are based on F^2 , conventional R -factors R are based on F , with F set to zero for negative F^2 . The threshold expression of $F^2 > 2\sigma(F^2)$ is used only for calculating R -factors(gt) *etc.* and is not relevant to the choice of reflections for refinement. R -factors based on F^2 are statistically about twice as large as those based on F , and R -factors based on ALL data will be even larger.

Fractional atomic coordinates and isotropic or equivalent isotropic displacement parameters (\AA^2)

	<i>x</i>	<i>y</i>	<i>z</i>	$U_{\text{iso}}^*/U_{\text{eq}}$
S1	0.44667 (11)	0.00547 (18)	0.67229 (8)	0.0215 (2)
O1	0.6105 (3)	0.0327 (6)	0.7186 (2)	0.0284 (7)
O2	0.3629 (4)	-0.1750 (5)	0.7089 (2)	0.0283 (8)
O3	0.4391 (3)	-0.0275 (5)	0.5504 (2)	0.0210 (7)
O4	0.2132 (3)	0.2865 (5)	0.4405 (2)	0.0222 (7)
O5	0.0104 (3)	0.5267 (5)	0.4294 (2)	0.0233 (6)
N1	-0.0074 (4)	0.2084 (6)	0.3228 (3)	0.0223 (8)
H1N	-0.1104 (13)	0.208 (8)	0.305 (4)	0.027*
C1	0.3493 (6)	0.2628 (8)	0.6800 (4)	0.0278 (11)
H1A	0.3625	0.3063	0.7545	0.042*
H1B	0.2370	0.2448	0.6473	0.042*

supplementary materials

H1C	0.3937	0.3815	0.6425	0.042*
C2	0.2907 (5)	-0.1031 (7)	0.4793 (3)	0.0207 (9)
H2A	0.2078	-0.1193	0.5196	0.025*
H2B	0.3058	-0.2524	0.4478	0.025*
C3	0.2425 (5)	0.0726 (7)	0.3934 (3)	0.0208 (9)
H3	0.3280	0.0922	0.3544	0.025*
C4	0.0626 (5)	0.3548 (7)	0.3990 (3)	0.0209 (9)
C5	0.0868 (4)	0.0065 (9)	0.3147 (3)	0.0198 (8)
H5	0.0396	-0.1304	0.3410	0.024*
C6	0.1067 (5)	-0.0349 (8)	0.2020 (3)	0.0246 (10)
H6A	0.1506	0.1036	0.1763	0.030*
H6B	0.1824	-0.1607	0.2030	0.030*
C7	-0.0472 (5)	-0.0941 (8)	0.1270 (3)	0.0229 (9)
C8	-0.1231 (5)	0.0627 (8)	0.0526 (3)	0.0289 (11)
H8	-0.0773	0.2083	0.0492	0.035*
C9	-0.2646 (5)	0.0105 (11)	-0.0168 (3)	0.0333 (10)
H9	-0.3146	0.1199	-0.0674	0.040*
C10	-0.3333 (6)	-0.1999 (9)	-0.0126 (4)	0.0326 (11)
H10	-0.4308	-0.2360	-0.0597	0.039*
C11	-0.2577 (6)	-0.3580 (8)	0.0615 (4)	0.0301 (11)
H11	-0.3037	-0.5033	0.0653	0.036*
C12	-0.1161 (5)	-0.3054 (8)	0.1297 (4)	0.0267 (10)
H12	-0.0651	-0.4160	0.1792	0.032*

Atomic displacement parameters (\AA^2)

	U^{11}	U^{22}	U^{33}	U^{12}	U^{13}	U^{23}
S1	0.0215 (5)	0.0219 (5)	0.0206 (5)	-0.0014 (5)	0.0037 (4)	-0.0012 (5)
O1	0.0221 (14)	0.036 (2)	0.0237 (15)	-0.0046 (16)	-0.0008 (11)	-0.0039 (15)
O2	0.0333 (19)	0.0263 (18)	0.0235 (17)	-0.0045 (15)	0.0030 (14)	0.0029 (14)
O3	0.0161 (13)	0.0277 (18)	0.0178 (13)	-0.0015 (13)	0.0007 (10)	-0.0043 (13)
O4	0.0176 (15)	0.0207 (15)	0.0260 (16)	0.0016 (12)	0.0001 (12)	-0.0014 (13)
O5	0.0240 (14)	0.0174 (16)	0.0294 (15)	0.0013 (14)	0.0082 (12)	0.0000 (14)
N1	0.0172 (18)	0.026 (2)	0.024 (2)	0.0008 (15)	0.0046 (15)	-0.0014 (15)
C1	0.032 (3)	0.021 (2)	0.031 (3)	0.000 (2)	0.009 (2)	-0.005 (2)
C2	0.020 (2)	0.022 (2)	0.019 (2)	0.0003 (17)	0.0018 (17)	-0.0022 (17)
C3	0.020 (2)	0.014 (2)	0.028 (2)	-0.0019 (15)	0.0052 (17)	-0.0025 (16)
C4	0.022 (2)	0.021 (2)	0.021 (2)	-0.0033 (18)	0.0066 (17)	0.0057 (17)
C5	0.0181 (17)	0.0195 (19)	0.0217 (19)	0.001 (2)	0.0041 (14)	0.006 (2)
C6	0.022 (2)	0.026 (3)	0.025 (2)	0.0009 (18)	0.0060 (17)	0.0007 (18)
C7	0.027 (2)	0.026 (2)	0.017 (2)	0.0023 (18)	0.0080 (18)	-0.0022 (17)
C8	0.035 (2)	0.029 (3)	0.024 (2)	-0.001 (2)	0.0093 (19)	0.0006 (18)
C9	0.041 (2)	0.035 (3)	0.020 (2)	0.004 (3)	0.0000 (18)	-0.003 (3)
C10	0.027 (2)	0.043 (3)	0.027 (3)	0.003 (2)	0.003 (2)	-0.007 (2)
C11	0.033 (3)	0.024 (3)	0.034 (3)	-0.005 (2)	0.008 (2)	-0.003 (2)
C12	0.029 (2)	0.028 (2)	0.022 (2)	-0.001 (2)	0.0024 (18)	0.0016 (19)

Geometric parameters (Å, °)

S1—O1	1.427 (3)	C3—H3	1.0000
S1—O2	1.430 (3)	C5—C6	1.529 (5)
S1—O3	1.578 (3)	C5—H5	1.0000
S1—C1	1.749 (5)	C6—C7	1.507 (6)
O3—C2	1.475 (5)	C6—H6A	0.9900
O4—C4	1.362 (5)	C6—H6B	0.9900
O4—C3	1.445 (5)	C7—C12	1.383 (6)
O5—C4	1.210 (5)	C7—C8	1.387 (6)
N1—C4	1.346 (6)	C8—C9	1.385 (6)
N1—C5	1.462 (6)	C8—H8	0.9500
N1—H1N	0.875 (10)	C9—C10	1.381 (8)
C1—H1A	0.9800	C9—H9	0.9500
C1—H1B	0.9800	C10—C11	1.390 (7)
C1—H1C	0.9800	C10—H10	0.9500
C2—C3	1.506 (5)	C11—C12	1.379 (7)
C2—H2A	0.9900	C11—H11	0.9500
C2—H2B	0.9900	C12—H12	0.9500
C3—C5	1.550 (5)		
O1—S1—O2	118.9 (2)	N1—C4—O4	109.6 (4)
O1—S1—O3	103.99 (16)	N1—C5—C6	112.8 (3)
O2—S1—O3	109.53 (18)	N1—C5—C3	99.9 (4)
O1—S1—C1	109.4 (2)	C6—C5—C3	113.2 (3)
O2—S1—C1	109.2 (2)	N1—C5—H5	110.2
O3—S1—C1	104.8 (2)	C6—C5—H5	110.2
C2—O3—S1	119.4 (2)	C3—C5—H5	110.2
C4—O4—C3	109.8 (3)	C7—C6—C5	111.9 (3)
C4—N1—C5	113.8 (4)	C7—C6—H6A	109.2
C4—N1—H1N	117 (3)	C5—C6—H6A	109.2
C5—N1—H1N	123 (3)	C7—C6—H6B	109.2
S1—C1—H1A	109.5	C5—C6—H6B	109.2
S1—C1—H1B	109.5	H6A—C6—H6B	107.9
H1A—C1—H1B	109.5	C12—C7—C8	118.2 (4)
S1—C1—H1C	109.5	C12—C7—C6	121.3 (4)
H1A—C1—H1C	109.5	C8—C7—C6	120.5 (4)
H1B—C1—H1C	109.5	C9—C8—C7	121.1 (5)
O3—C2—C3	108.1 (3)	C9—C8—H8	119.4
O3—C2—H2A	110.1	C7—C8—H8	119.4
C3—C2—H2A	110.1	C10—C9—C8	120.2 (5)
O3—C2—H2B	110.1	C10—C9—H9	119.9
C3—C2—H2B	110.1	C8—C9—H9	119.9
H2A—C2—H2B	108.4	C9—C10—C11	118.9 (4)
O4—C3—C2	109.3 (3)	C9—C10—H10	120.5
O4—C3—C5	106.4 (3)	C11—C10—H10	120.5
C2—C3—C5	111.6 (3)	C12—C11—C10	120.4 (5)
O4—C3—H3	109.8	C12—C11—H11	119.8
C2—C3—H3	109.8	C10—C11—H11	119.8

supplementary materials

C5—C3—H3	109.8	C11—C12—C7	121.1 (4)
O5—C4—N1	129.1 (4)	C11—C12—H12	119.5
O5—C4—O4	121.3 (4)	C7—C12—H12	119.5
O1—S1—O3—C2	168.8 (3)	C2—C3—C5—N1	123.5 (4)
O2—S1—O3—C2	40.7 (4)	O4—C3—C5—C6	124.6 (4)
C1—S1—O3—C2	-76.4 (3)	C2—C3—C5—C6	-116.3 (4)
S1—O3—C2—C3	122.4 (3)	N1—C5—C6—C7	-66.3 (5)
C4—O4—C3—C2	-121.3 (4)	C3—C5—C6—C7	-178.9 (4)
C4—O4—C3—C5	-0.7 (4)	C5—C6—C7—C12	-73.9 (5)
O3—C2—C3—O4	-62.6 (4)	C5—C6—C7—C8	106.5 (5)
O3—C2—C3—C5	180.0 (3)	C12—C7—C8—C9	0.4 (6)
C5—N1—C4—O5	-174.4 (4)	C6—C7—C8—C9	-180.0 (4)
C5—N1—C4—O4	7.3 (5)	C7—C8—C9—C10	0.3 (7)
C3—O4—C4—O5	177.7 (4)	C8—C9—C10—C11	-0.5 (7)
C3—O4—C4—N1	-3.8 (5)	C9—C10—C11—C12	-0.1 (7)
C4—N1—C5—C6	-127.6 (4)	C10—C11—C12—C7	0.9 (7)
C4—N1—C5—C3	-7.1 (4)	C8—C7—C12—C11	-1.0 (7)
O4—C3—C5—N1	4.4 (4)	C6—C7—C12—C11	179.4 (4)

Hydrogen-bond geometry (\AA , $^\circ$)

<i>D</i> —H \cdots <i>A</i>	<i>D</i> —H	H \cdots <i>A</i>	<i>D</i> \cdots <i>A</i>	<i>D</i> —H \cdots <i>A</i>
N1—H1N \cdots O2 ⁱ	0.88 (2)	2.28 (2)	3.113 (5)	160 (4)
C1—H1B \cdots O5 ⁱⁱ	0.98	2.51	3.428 (6)	155
C2—H2A \cdots O5 ⁱⁱ	0.99	2.32	3.214 (5)	150
C5—H5 \cdots O5 ⁱⁱⁱ	1.00	2.36	3.326 (6)	162
C6—H6B \cdots O1 ^{iv}	0.99	2.59	3.528 (6)	158

Symmetry codes: (i) $-x, y+1/2, -z+1$; (ii) $-x, y-1/2, -z+1$; (iii) $x, y-1, z$; (iv) $-x+1, y-1/2, -z+1$.

Fig. 1

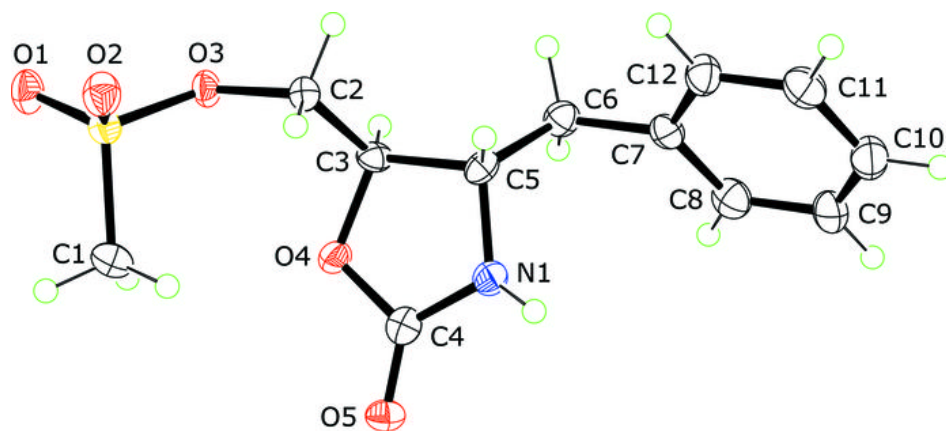


Fig. 2

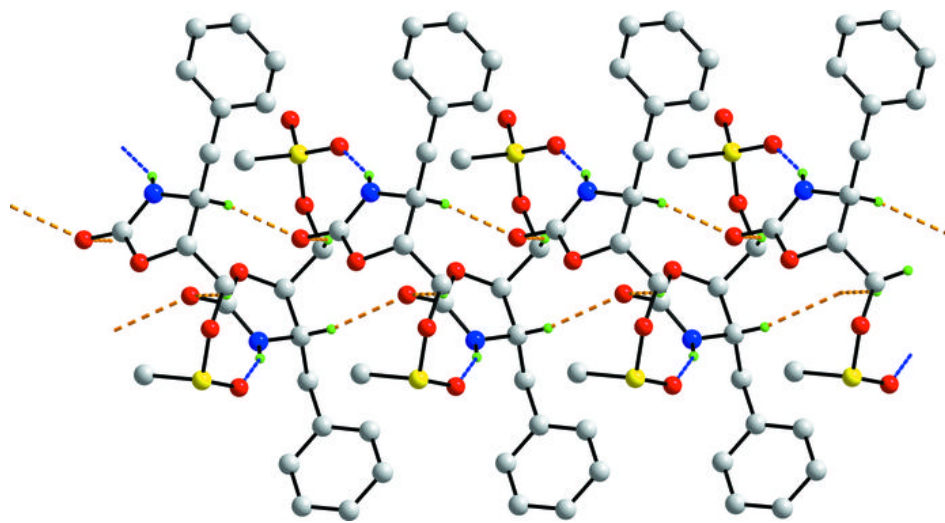


Fig. 3

