

IL-17A promotes migration and tumor killing capability of B cells in esophageal squamous cell carcinoma

Lin Lu¹, Chengyin Weng¹, Haibo Mao¹, Xisheng Fang¹, Xia Liu¹, Yong Wu¹, Xiaofei Cao¹, Baoxiu Li¹, Xiaojun Chen¹, Qinquan Gan¹, Jianchuan Xia², Guolong Liu¹

¹Department of Medical Oncology, Guangzhou First People's Hospital, Guangzhou Medical University, Guangzhou, 510180, China

²Department of Experimental Research and State Key Laboratory of Oncology in Southern China, Sun Yat-sen University Cancer Center, Guangzhou, 510060, China

Correspondence to: Guolong Liu, **e-mail:** Liugl@fimmu.com
Jian-chuan Xia, **e-mail:** xiajch@sysucc.org.cn

Keywords: IL-17A, B cells, esophageal squamous cell carcinoma, recruitment, cytotoxicity

Received: July 28, 2015

Accepted: February 20, 2016

Published: March 03, 2016

ABSTRACT

We have previously reported that the accumulation of IL-17-producing cells could mediate tumor protective immunity by promoting the migration of NK cells, T cells and dendritic cells in esophageal squamous cell carcinoma (ESCC) patients. However, there were no reports concerning the effect of IL-17A on tumor infiltrating B cells. In this study, we investigated the accumulation of CD20+ B cells in the ESCC tumor nests and further addressed the effect of IL-17A on the migration and cytotoxicity of B cells. There was positive correlation between the levels of CD20+ B cells and IL-17+ cells. IL-17A could promote the ESCC tumor cells to produce more chemokines CCL2, CCL20 and CXCL13, which were associated with the migration of B cells. In addition, IL-17A enhanced the IgG-mediated antibody and complement mediated cytotoxicity of B cells against tumor cells. IL-17A-stimulated B cells gained more effective direct killing capability through enhanced expression of Granzyme B and FasL. The effect of IL-17A on the migration and cytotoxicity of B cells was IL-17A pathway dependent, which could be inhibited by IL-17A inhibitor. This study provides further understanding of the roles of IL-17A in humoral response, which may contribute to the development of novel tumor immunotherapy strategy.

INTRODUCTION

Esophageal carcinoma ranks the 8th most common cancer and 6th leading cause of cancer-related deaths worldwide [1]. Esophageal squamous cell carcinoma (ESCC), as the major pathological type, has become a major health threat to Chinese [2]. Despite great advance in the treatment strategies, the clinical outcomes of ESCC patients remained unsatisfactory [2, 3]. According to Siegel's cancer statistics, the 5-year survival rate was 49.3% for localized disease and only 2.8% for metastatic disease [4]. Among the risk factors involving in the prognosis of ESCC patients, the host immune responses, tumor infiltrating immune cells and cytokines, are of great importance [3, 5-7]. The infiltration of IL-17+ cells plays bipolar roles in tumor immunity: tumor protective immunity or pro-tumor immunity [6, 7].

IL-17A, termed as cytotoxic T lymphocyte antigen 8 (CTLA8), was mainly produced by CD4+ T cells. And this subgroup cells were defined as T helper 17 cells (Th 17 cell) [8]. Numerous studies have investigated the roles of IL-17A in inflammation, autoimmune diseases and tumors [9-12]. The studies concerning the roles of IL-17A in tumor development are still controversial [13].

Our previous studies demonstrated that the infiltration of IL-17-producing cells in the cancer nest was correlated with better overall survival (OS) of ESCC patients [14]. IL-17A could stimulate ESCC tumor cells to produce much more chemokines to recruit more immune cells to the tumor microenvironment and enhances their antitumor functions [15]. However, there are few reports concerning the effects of IL-17A on the migration and functions of B lymphocytes. Previous studies have demonstrated that IL-17 could recruit B cells in respiratory

tissues [16, 17]. However, whether IL-17 could promote the recruitment and tumor lysis of B cells in cancer remains unknown.

Thus, in this study, we investigated the accumulation and clinical significance of B cells in the ESCC tumor nests. Furthermore, we will study the effects of IL-17A on the migration and cytotoxicity of B cells. This study will provide novel experimental evidence for the underlying mechanisms of IL-17A-mediated tumor protective immunity.

RESULTS

Accumulation and prognostic value of CD20+ B cells in ESCC patients

CD20 has been generally used as an immunohistochemical marker to detect B cell infiltration in solid tumor tissues [18-20]. Thus the accumulation of CD20+ B lymphocytes in the ESCC tumor nests was detected by IHC analysis. The representative micrographs are shown in Figure 1. The ESCC patients were divided into high or low CD20+ B cell group based on the median count of the CD20+ B cells (6.2 cells/HPF, range: 0-34.7 cells/HPF) as previously described [14].

Then we assessed the associations between the CD20+ B cell infiltration and clinico-pathological parameters of ESCC patients. As demonstrated in Table 1, the counts of CD20+ B cells were inversely associated with tumor length ($P = 0.009$) and T (tumor invasion depth) stage ($P = 0.014$).

We compared the association between CD20+ B cell infiltration and the recurrence-survival rate (RFS) and overall survival (OS) of ESCC patients. There was positive correlation between the levels of CD20+ B cells and the RFS (Figure 2A, $P = 0.010$) or OS (Figure 2B, $P = 0.013$). Besides. The patients in the high CD20+ B cell group had a better RFS or OS than the patients in the low CD20+ B cell group.

The univariate analysis and subsequent multivariate analysis demonstrated that CD20+ B cells ($P = 0.032$), N stage ($P < 0.001$) and differentiation ($P = 0.009$) could be viewed as independent predictors for ESCC patients (Table 2).

Relationships between CD20+ B cells and IL-17-producing cells in the same tumor microenvironment

To study the relationship between the counts of IL-17+ TILs and CD20+ B cells in the same tumor microenvironment, IHC was employed to detect the accumulations of both cells in serial tissue slides from the same tissue blocks. The representative microscopy photos of CD20+ B cells and IL-17+ cells in the same tissue block were shown in Figure 3A. We found that low CD20+ cell count was associated with low count of IL-17+ cells in the same tumor tissue (sample 1), while high CD20+ cell count was associated with larger count of IL-17+ cells in the tumor tissue (sample 2). As shown in Figure 3B, the counts of CD20+ B cells was positively correlated with the counts of IL-17-producing cells ($N = 181$, $R = 0.210$, $P = 0.005$).

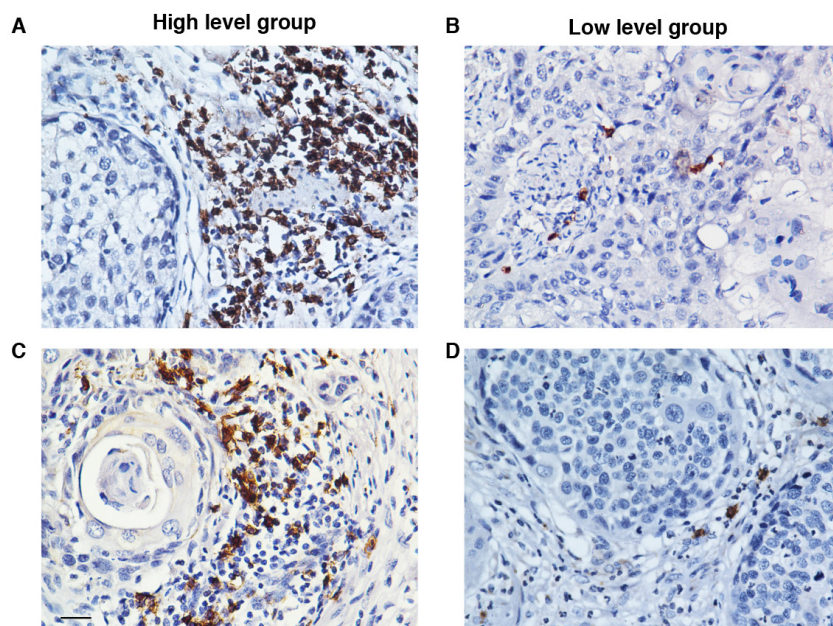


Figure 1: The accumulation of CD20+ B cells in the tumor nests of ESCC patients. The CD20+ B cells were detected by using immunohistochemistry. Based on the median count of CD20+ B cells, the patients were divided into two groups: high CD20+ B cell group A, and low CD20+ B cell group B. (A) and (B) show the representative immunohistochemical staining photomicrographs of CD20+ B cells. Original magnification: X 400.

Table 1: Relationship between the levels of CD20+ B cells and clinicopathologic parameters of patients with ESCC

Parameters	N of patients	CD20+ B cells		P value
		Low level group (N=91)	High level group (N=90)	
Age				0.812
<60	105	52	53	
≥60	76	39	37	
Gender				0.163
Male	141	67	74	
Female	40	24	16	
Tumor length				0.009*
<5cm	75	29	46	
≥5cm	106	62	44	
Differentiation				0.673
G1	45	24	21	
G2	85	44	41	
G3	51	23	28	
Location				0.253
Upper third	13	8	5	
Middle third	114	52	62	
Lower third	54	31	23	
T stage				0.014*
T1+T2	57	21	36	
T3+T4	124	70	54	
N stage				0.816
No	101	50	51	
Yes	80	41	39	
M stage				0.682
M0	175	87	88	
M1	6	4	2	
TNM staging				0.235
Stage I-II	117	55	62	
Stage III-IV	64	36	28	

*, statistical significance, $P < 0.05$; G1, well differentiated; G2, moderate differentiated; G3, poor differentiated; T, primary tumor invasion depth; N, regional lymph node; M, distant metastasis.

IL-17A stimulation of ESCC tumor cells resulted in promoting migration of B cells

To investigate whether IL-17A could recruit B cells, we performed chemotaxis assay in a chamber system. As shown in Figure 4A and 4B, supernatants from IL-17A-treated ESCC cells (IL-17_EC109 and IL-17_KYSE30) showed significantly elevated

chemotaxis effects on B cells than untreated cells ($P = 0.015$ and $P = 0.012$, respectively, Figure 4A and 4B). In contrast, adding IL-17A to the supernatants from untreated ESCC cells (IL-17A+EC109 and IL-17A+KYSE30) failed to directly recruit B cells. ($P > 0.05$, Figure 4A and 4B). Moreover, additional supplement of IL-17A inhibitor secukinumab to the IL-17A_EC109 or IL-17A_KYSE 30 prevented IL-17A-mediated B cell

migration (Figure 4A and 4B, $P > 0.05$), which suggesting that IL-17A pathway was required for B cell migration. These data suggested that the IL-17A might recruit B cells by stimulating tumor cells to produce some soluble factors. After stimulating with IL-17A for 24h, the levels of chemokines CCL2, CCL20 and CXCL13 were remarkably increased in both ESCC cell lines (Figure 4C and 4D, $P < 0.05$). These data suggest that IL-17A could promote the migration of B cells by stimulating the production of inflammatory chemokines from the ESCC tumor cells.

Effect of IL-17A on the antibody and complement mediated cytotoxicity (CDC) of B cells

As shown in Figure 5A, the IL-17A stimulated the B cells to produce more IgG than the control group ($P < 0.01$). The immunologic consequence of the increased production of antibody IgG was evaluated using antibody and complement mediated cytotoxicity. Immune supernatants harvested from IL-17A-treated B cells were significantly more efficient mediator of cell lysis against EC109 (Figure 5B, $P < 0.001$) and KYSE 30 (Figure 5C, $P < 0.001$). As shown in Figure 5B and 5C, additional supplement of IL-17A inhibitor could inhibit the CDC effect of IL-17A-stimulated B lymphocytes (Figure 5B, $P < 0.001$ for EC109 cells ; Figure 5C, $P = 0.001$ for KYSE30 cells).

Effect of IL-17A on the direct cytolytic capability of B cells using LDH assay

Our previously study investigated that the direct cytotoxicity B cell against tumor cells could be detected by LDH assay [21]. As shown in Figure 6A and 6B, IL-17A significantly enhanced the cytotoxicity of B cells against ESCC tumor cells when the ratio of effect to target was at 10:1 (Figure 6A, $P = 0.008$ for EC109 cells; Figure 6B, $P = 0.013$ for KYSE 30 cells, respectively). Blocking IL-17A by secukinumab could inhibit the cytolytic capability of IL-17A-treated B cells (Figure 6A and 6B, $P = 0.002$ for EC109 cells and $P = 0.033$ for KYSE 30 cells, respectively).

To further investigate how IL-17A augmented the cytolytic function of B cells, we detected the expression of cytolytic molecules. We found that IL-17A significantly stimulated the production of Granzyme B in B cells (Figure 6C, $P = 0.001$), but had no effect on the production of IFN- γ (Figure 6D, $P > 0.05$). And IL-17A-stimulated Granzyme B production could be suppressed by IL-17A inhibitor secukinumab (Figure 6C, $P = 0.002$ compared to IL-17A_B cells). In addition, IL-17A treatment could also enhance FasL expression on B cells (Figure 6E). Interestingly, the IL-17A inhibitor could not significantly decrease the FasL expression (Figure 6E). These data suggested that IL-17A could stimulate B cells to produce much more cytotoxic molecules to directly target ESCC tumor cells.

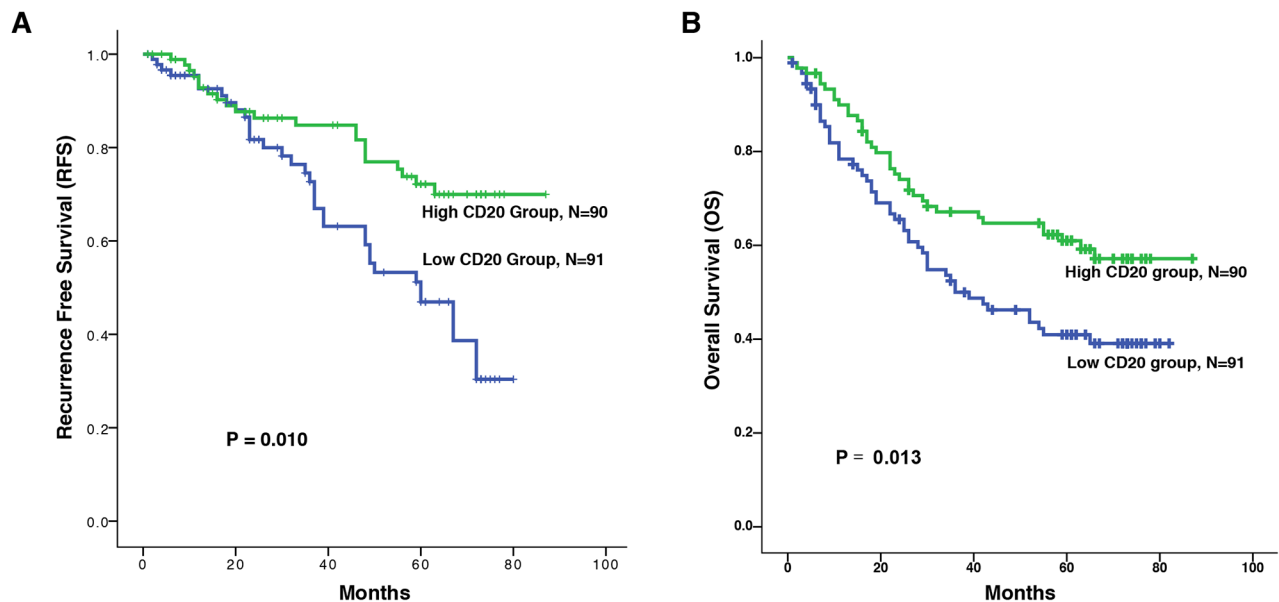


Figure 2: Kaplan-Meier survival analysis of CD20+ B cells in patients with ESCC. Relationships between the levels of CD20+ B cells and recurrence free survival (RFS) and overall survival (OS). **A.** Increased counts of CD20+ B cells predict better RFS. **B.** Increased counts of CD20+ B cells predict better OS. The recurrence free survival (RFS) was defined as the interval between the date of surgery and date of recurrence or the last known follow-up. And the overall survival (OS) was defined as the interval between the date of surgery and date of death or the last known follow-up.

Table 2: Univariate and multivariate analyses of variables associated with overall survival

Parameters	Univariate analysis			Multivariate analysis		
	HR	95%CI	P value	HR	95%CI	P value
CD20+ (low/high)	1.7061	1.113-2.616	0.014*	0.488	0.227-4.611	0.032*
Age (≥ 60 / <60)	1.086	0.712-1.657	0.702			
Gender (female/male)	0.785	0.467-1.319	0.360			
Location (lower/middle/upper)	1.111	0.763-1.617	0.583			
Length (≥ 5 / <5)	1.178	0.763-1.809	0.454			
Differentiation (G3/G2/G1)	1.554	1.150-2.100	0.004*	1.498	1.105-2.031	0.009*
T stage (T3+4/T1+2)	2.152	1.280-3.619	0.004*	0.481	0.272-3.111	0.078
N stage (Yes/No)	3.250	2.100-5.078	0.000*	1.095	0.227-7.289	< 0.001*
M stage (M1/M0)	2.385	0.967-5.886	0.059			
IL-17+ (high/low)	0.633	0.416-0.964	0.033*	0.386	0.225-2.943	0.086

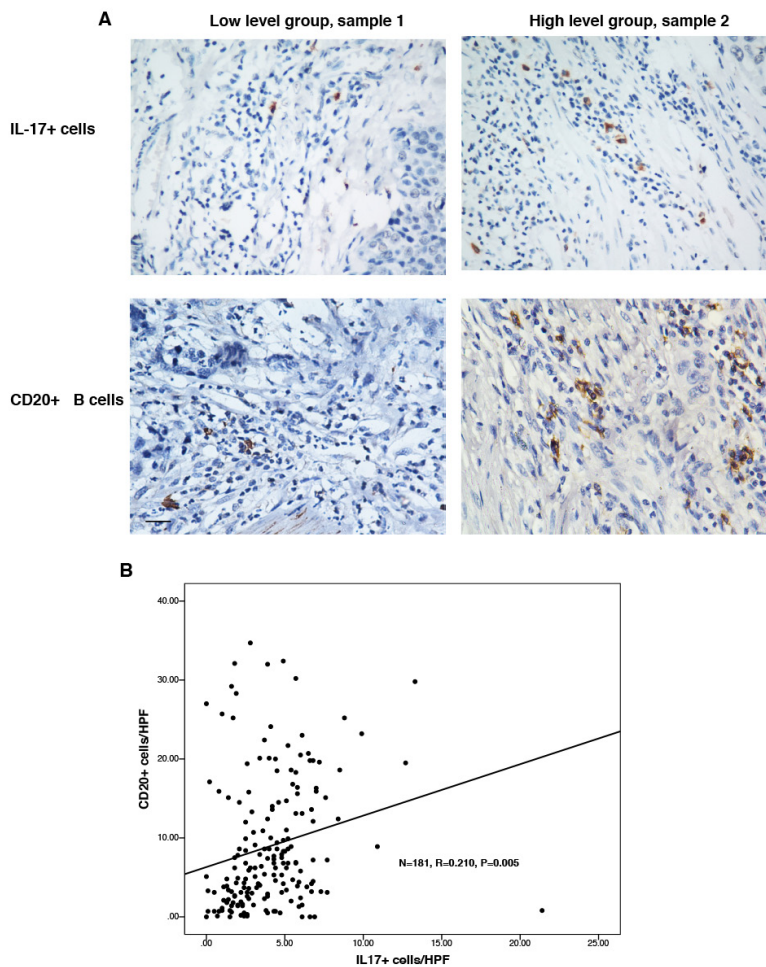


Figure 3: There was positive relationship between the counts of CD20+ B cells and IL-17-producing cells. The numbers of CD20+ B cells and IL-17+ cells were detected using immunohistochemistry. **A.** Representative micrographs of IL-17+ TILs and CD20+ B cells in the same ESCC tissues (Left panel: sample 1; right panel: sample 2). **B.** The correlation between the counts of IL-17A-producing cells and CD20 + B cells was determined using Pearson correlation coefficient and linear regression analyses. Original magnification: X 400.

DISCUSSION

For decades, the B cells mediated-humoral immunity was overlooked. The roles played by B cells in tumor immunity are complex: either as effector cells or as antigen presenting cells [22, 23]. Activated B cells could mediate direct cytotoxicity against tumor cells. Kemp et al found that CpG-containing oligodeoxynucleotides-activated B cells could mediate lysis of tumor cells [24]. Li et al also found that LPS/anti-CD40 activated B cells could mediate direct killing of tumor cells in vitro [22]. In addition, several studies have used activated B cells as a source of effective antigen presenting cells for T cell sensitization [25, 26]. The adoptive transfer of activated

B cells could exert effective anti-tumor immunity by inducing host T cell activation [22, 27]. However, adoptive transfer of B cells plus T cells could induce more efficient antitumor effect than B cells or T cells alone. And the B cell-mediated antitumor efficiency was still unsatisfactory.

In our previous studies, we found that IL-17A could mediate anti-tumor immunity by recruiting immune cells to the tumor microenvironment, such as NK cells, CD8+ T cells and CD1a+ DCs [14, 15]. As an important part of the tumor microenvironment, we found that the high B cell infiltration was significantly associated with smaller tumor diameter and lower T stage as well as better prognosis of patients, indicating a protective immunity of B cells against ESCC.

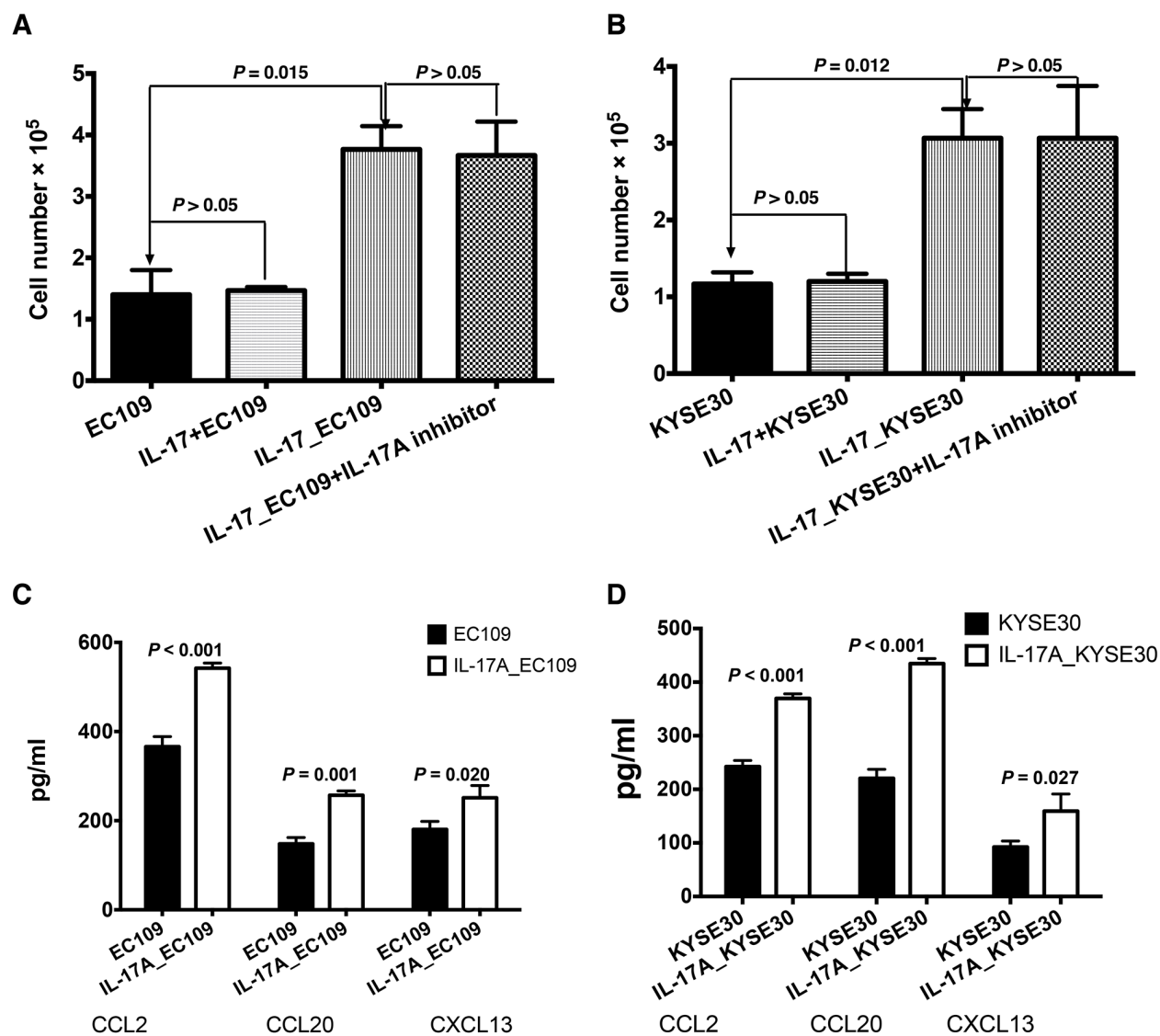


Figure 4: IL-17A promotes the recruitment of B cells by stimulating ESCC tumor cells to produce more chemokines. A and B. The supernatants of tumor cells treated with IL-17A for 48 h (IL-17_EC109 and IL-17_KYSE30) could induce the migration of significantly higher number of B cells compared with the non-treated tumor cell supernatants (EC109 and KYSE30) or additional supplement with IL-17A (EC109+IL-17 and KYSE30+IL-17). **C.** The ELISA analysis showed that IL-17A could promote EC109 cells' production of more chemokines CCL2, CCL20 and CXCL13. **D.** Exposure to IL-17A, KYSE30 tumor cells could produce more chemokines CCL2, CCL20 and CXCL13.

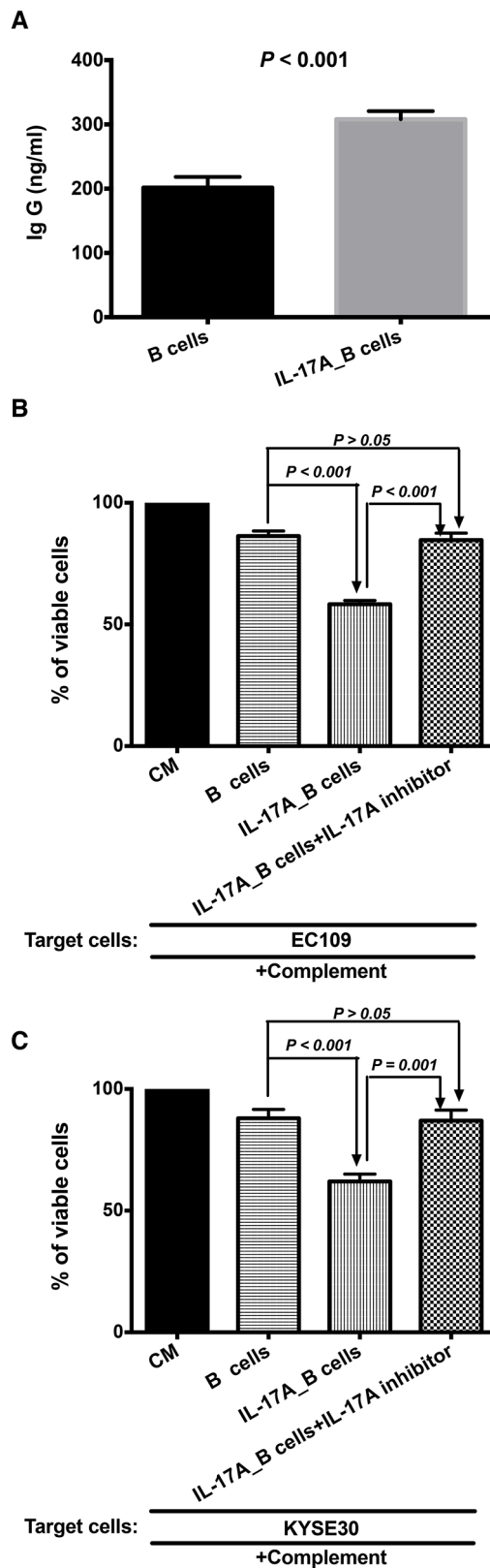


Figure 5: IL-17A promotes the production of IgG to enhance the antibody and complement mediated cytotoxicity (CDC). The purified B cells were treated with 50 ng/ml IL-17A for 4~5 days (IL-17A_B cells). B cells treated without IL-17A was used as control. **A.** ELISA result shows that IL-17A stimulates the productions of IgG. IL-17A enhances the antibody and complement mediated tumor specific cytotoxicity of B cells against EC109 **B.** and KYSE 30 **C.** tumor cells. The IL-17A inhibitor could prevent the stimulation of IL-17A on the CDC of B cells.

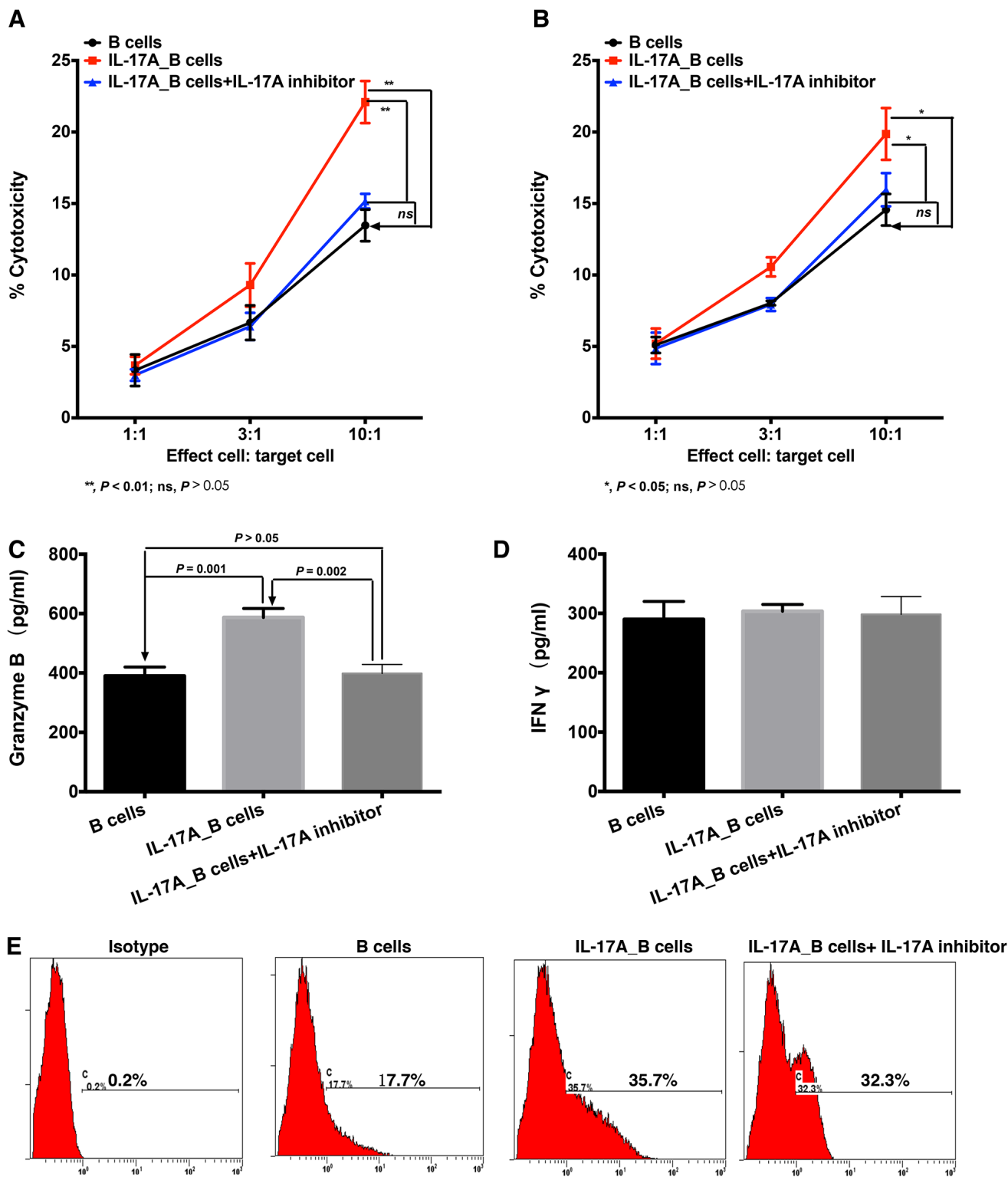


Figure 6: IL-17A intensifies the cytotoxicity of B cells against ESCC tumor cells through stimulating the production of cytotoxic molecules. LDH assay was performed to detect the direct cytolytic capabilities of B cells against ESCC tumor cells EC109 **A**. and KYSE30 **B**. (A and B) IL-17A promotes the cytotoxicity of B cells against ESCC tumor cells. ELISA assay was performed to detect the effect of IL-17A on the production of cytotoxic molecules Granzyme B **C**. and IFN γ **D**. **E**. Flow cytometry analysis shows that IL-17A stimulates the expression of FasL in B cells.

Interestingly, there was a positive correlation between the numbers of IL-17-producing cells and CD20+ B cells in the same tumor microenvironment, which indicates that the IL-17 producing cells might exert an antitumor effect by stimulating the B cells-mediated humoral response. In vitro chemotaxis assay demonstrated IL-17A could stimulate the migration of B cells. Similarly, studies in inflammatory lung tissues showed that IL-17A could promote the migration of B cells [16, 17]. Several studies have confirmed that B cells could express chemokine receptors CCR2 [28], CCR6 [29] and CXCR5 [30]. Thus, we detected the corresponding chemokines which were associated with the migration of B cells. IL-17A could stimulate ESCC tumor cells to produce much more chemokines, such as CCL2, CCL20 and CXCL13. These data suggested that one of the mechanisms underlying IL-17A-mediated antitumor immunity is mediated by recruiting an increased number of B cells to the tumor microenvironment through chemokine/chemokine receptor interactions.

One mechanism underlying B-cell mediated cytotoxicity was through antibody and complement mediated cytotoxicity. Our previous study found that cytotoxic antibody subclass IgG produced by the activated B cells could bind specifically to the tumor cells and mediate tumor cell lysis in the presence of complement [31]. We found that IL-17A promoted B cells' increased production of immunoglobulin IgG and induced much more effective antibody and complement mediated cytotoxicity (CDC). Blocking IL-17A through the anti-IL-17A antibody could inhibit the CDC effect of IL-17A_B cells, which suggested that the IL-17A pathway was involved in the CDC effect of B cells. Furthermore, LDH assay showed that IL-17A enhanced the direct cytolytic effect of B cells against ESCC tumor cells. This was due to the increased expression of Granzyme B and FasL in IL-17A-treated B cells. Our results are consistent with previous findings that there is a subpopulation of B cells which could be stimulated to produce Granzyme B [32]. Besides, Hahne et al reported that activated B cells could express FasL, which were able to kill Fas-sensitive target cells [33]. Blocking IL-17A using secukinumab could decrease the expression of Granzyme B, but FasL in IL-17A-treated B cells. These indicated that the IL-17A could enhance the indirect and direct B cell cytotoxicity by stimulating the productions of IgG and Granzyme B.

As antigen presenting cells, it is generally accepted that activated B cells could express MHC class II molecules when pulsed with exogenous antigens. And the B cell-mediated MHC class II-restricted presentation plays important roles in the establishment of humoral response [34, 35]. We hypothesized that the IL-17A_B cell-mediated cytotoxicity was MHC class II-restricted, because co-culture of ESCC tumor cell supernatant and B cells resulted in enhanced cytotoxicity. And we will further confirm this in our continuing study.

In conclusion, our study demonstrated that IL-17A could enhance the B cell-mediated humoral immunity. On one way, IL-17A could promote the migration of B cells by stimulating tumor cells to produce much more chemokines. On the other way, IL-17A could enhance the tumor killing capabilities of B cells by producing more immunogenic antibody and cytolytic molecules. Our current study would contribute to the development of more effective tumor immunotherapy.

MATERIALS AND METHODS

Ethical statement

The Research Ethics Committee of the Guangzhou First People's Hospital approved this study and informed consents were obtained from all participants. All experimental procedures were performed according to the Helsinki Declaration.

Patients and specimens

Paraffin-embedded specimens were obtained from 181 cases of esophageal squamous cell carcinoma (ESCC) patients who underwent surgery between 2002 and 2003. The follow-up data of patients included in this study were more than five years, and the median follow-up time was 44 months (range: 3-87 months). All the patients included in this study were treated with surgery. And none were given with chemotherapy or radiotherapy prior to the surgery. Patients were given to chemotherapy or radiotherapy after the surgery according to the NCCN guideline. The patients were staged according to the UICC 7th stage system and graded histologically according to the WHO classification criteria.

Cell line and culture

The ESCC cell lines EC109 and KYSE30 were purchased from the Committee of the Type Culture Collection of the Chinese Academy of Sciences (Shanghai, China), and maintained as previously described [21]. To harvest the tumor cell culture supernatant, a total amount of 2×10^6 tumor cells were suspended in 4 ml CM and placed in the six-well plates. Part of the tumor cells were treated with or without 50 ng/ml IL-17A for 48 hours. Part of the tumor cells were treated with both IL-17A and IL-17A inhibitor (Secukinumab, 10 µg/ml, Novartis).

Immunohistochemistry and scoring

The paraffin-embedded blocks were cut at a thickness of 2 µm. The slides were deparaffinized and rehydrated through graded ethanol. Then the slides were boiled in EDTA (1mM, pH 8.0) buffer in a microwave oven for the purpose of antigen retrieval as previously described [20]. After blocking the endogenous peroxidase by using

0.3% H₂O₂, the slides were incubated with the primary antibodies: mouse anti-human CD20 (Zhongshan Golden Bridge Company, Beijing, China; at a concentration of 1:200) or goat anti-IL-17 (R&D systems; dilution 1/100) overnight. After being incubated with HRP-conjugated secondary antibody (DAKO EnVision™ Detection Kit), the visualization signal was developed using the A solution in the DAKO kit and counterstained with hematoxylin.

The cell numbers were obtained by manually counting positively stained cells in ten randomly chosen fields under the 400× high power magnification (cells/HPF). Then the scoring was determined by computing the mean number of positively stained cells per HPF.

B cells isolation and culture

B cells were purified from the peripheral blood of healthy donors using anti-CD19 MACS beads (MiltenyBiotec, Auburn, CA) according to the manufacturer's instructions. In some experiments, the purified CD19+ B cells were activated with culture medium supplemented with IL-2 and LPS (Sigma-Aldrich, Atlanta, GA) for 4-5 days. The supernatants and B cells were collected for subsequent experiments.

In vitro chemotaxis assay

The chemotaxis abilities of B cells were evaluated using 24-well chemotaxis chambers (5.0 μm pore size, Corning, NY) as previously described [21]. Various tumor cell culture supernatants were added in the lower chamber. About 1×10⁷ purified B cells were re-suspended in a volume of 200 μl CM and placed in the upper chamber. After 4 h incubation, the number of cells migrated into the lower chamber were counted using a hemocytometer.

ELISA assay

The concentrations of CCL2, CCL20 and CXCL 13 (Abcam, USA) in the tumor cell culture supernatants, as well as Ig G, IFN-γ and Granzyme B in the B culture supernatants were detected using commercial ELISA (BD PharMingen, USA) kits according to the manufacturer's instructions.

Antibody and complement mediated cytotoxicity

10⁵ viable tumor cells were incubated with immune supernatants collected from the B cells as previously described [37]. Then the cells were incubated with rabbit complement for another 1h. Finally, typan blue staining was used to analyze the cell lysis. The results was expressed as: % viable cells = the final number of viable cells/10⁵.

LDH assay

The lactate dehydrogenase assay (LDH, CytoTox 96; Promega) was performed to detect the cytolytic

abilities of B cells against ESCC tumor cells as previously described [21].

Flow cytometry analysis

Cell surface expression of FasL was analyzed using flow cytometry as previously described [21]. Cells were stained with PE-conjugated anti-FasL purchased from BD Biosciences and analyzed on CXP Analysis software (Beckman Coulter).

Statistical analysis

Data analysis was performed using SPSS software (version 16.0; SPSS Inc., Chicago, IL). Quantitative values were expressed as mean ± SD or median (range). The overall survival (OS) was calculated using the Kaplan-Meier method and the log-rank test. The prognostic significances were assessed by univariate and multivariate analyses using the Cox proportional hazards model. The student's *t* test was performed to compare the values between 2 groups. A two-tailed *P* value ≤ 0.05 was considered statistically significant.

CONFLICTS OF INTEREST

The authors have no conflicting financial interests.

GRANT SUPPORT

This work was supported by the National Natural Science Foundation (81502563) of China, and the Science and Technology Program of Guangdong, China (2012B061700007).

REFERENCES

1. Jemal A, Bray F, Center MM, Ferlay J, Ward E and Forman D. Global cancer statistics. *CA Cancer J Clin.* 2011; 61:69-90.
2. Zhou L, Fu G, Wei J, Shi J, Pan W, Ren Y, Xiong X, Xia J, Shen Y, Li H and Yang M. The identification of two regulatory ESCC susceptibility genetic variants in the TERT-CLPTM1L loci. *Oncotarget.* 2015. doi: 10.18632/oncotarget.6747.
3. Qiu H, Zheng L, Tang W, Yin P, Cheng F and Wang L. Programmed death-1 (PD-1) polymorphisms in Chinese patients with esophageal cancer. *Clinical biochemistry.* 2014; 47:612-617.
4. Siegel R, Naishadham D and Jemal A. Cancer statistics for Hispanics/Latinos, 2012. *CA Cancer J Clin.* 2012; 62:283-298.
5. Cho Y, Miyamoto M, Kato K, Fukunaga A, Shichinohe T, Kawarada Y, Hida Y, Oshikiri T, Kurokawa T, Suzuoki M, Nakakubo Y, Hiraoka K, Murakami S, Shinohara T, Itoh T, Okushiba S, et al. CD4+ and CD8+ T cells cooperate to

- improve prognosis of patients with esophageal squamous cell carcinoma. *Cancer research*. 2003; 63:1555-1559.
6. Kryczek I, Wei S, Szeliga W, Vatan L and Zou W. Endogenous IL-17 contributes to reduced tumor growth and metastasis. *Blood*. 2009; 114:357-359.
 7. Zhang JP, Yan J, Xu J, Pang XH, Chen MS, Li L, Wu C, Li SP and Zheng L. Increased intratumoral IL-17-producing cells correlate with poor survival in hepatocellular carcinoma patients. *Journal of hepatology*. 2009; 50:980-989.
 8. Dong C. Diversification of T-helper-cell lineages: finding the family root of IL-17-producing cells. *Nature reviews Immunology*. 2006; 6:329-333.
 9. Tesmer LA, Lundy SK, Sarkar S and Fox DA. Th17 cells in human disease. *Immunological reviews*. 2008; 223:87-113.
 10. Afzali B, Lombardi G, Lechler RI and Lord GM. The role of T helper 17 (Th17) and regulatory T cells (Treg) in human organ transplantation and autoimmune disease. *Clinical and experimental immunology*. 2007; 148:32-46.
 11. Kryczek I, Banerjee M, Cheng P, Vatan L, Szeliga W, Wei S, Huang E, Finlayson E, Simeone D, Welling TH, Chang A, Coukos G, Liu R and Zou W. Phenotype, distribution, generation, and functional and clinical relevance of Th17 cells in the human tumor environments. *Blood*. 2009; 114:1141-1149.
 12. Zhu X, Mulcahy LA, Mohammed RA, Lee AH, Franks HA, Kilpatrick L, Yilmazer A, Paish EC, Ellis IO, Patel PM and Jackson AM. IL-17 expression by breast-cancer-associated macrophages: IL-17 promotes invasiveness of breast cancer cell lines. *BCR*. 2008; 10:R95.
 13. Murugaiyan G and Saha B. Protumor vs antitumor functions of IL-17. *Journal of immunology (Baltimore, Md : 1950)*. 2009; 183:4169-4175.
 14. Lv L, Pan K, Li XD, She KL, Zhao JJ, Wang W, Chen JG, Chen YB, Yun JP and Xia JC. The accumulation and prognosis value of tumor infiltrating IL-17 producing cells in esophageal squamous cell carcinoma. *PloS one*. 2011; 6:e18219.
 15. Lu L, Pan K, Zheng HX, Li JJ, Qiu HJ, Zhao JJ, Weng DS, Pan QZ, Wang DD, Jiang SS, Chang AE, Li Q and Xia JC. IL-17A promotes immune cell recruitment in human esophageal cancers and the infiltrating dendritic cells represent a positive prognostic marker for patient survival. *Journal of immunotherapy (Hagerstown, Md : 1997)*. 2013; 36:451-458.
 16. Fleige H, Ravens S, Moschovakis GL, Bolter J, Willenzon S, Sutter G, Haussler S, Kalinke U, Prinz I and Forster R. IL-17-induced CXCL12 recruits B cells and induces follicle formation in BALT in the absence of differentiated FDCs. *The Journal of experimental medicine*. 2014; 211:643-651.
 17. Halwani R, Al-Kufaidy R, Vazquez-Tello A, Pureza MA, BaHammam AS, Al-Jahdali H, Alnassar SA, Hamid Q and Al-Muhsen S. IL-17 Enhances Chemotaxis of Primary Human B Cells during Asthma. *PloS one*. 2014; 9:e114604.
 18. Woo JR, Liss MA, Muldong MT, Palazzi K, Strasner A, Ammirante M, Varki N, Shabaik A, Howell S, Kane CJ, Karin M and Jamieson CA. Tumor infiltrating B-cells are increased in prostate cancer tissue. *Journal of translational medicine*. 2014; 12:30.
 19. Nielsen JS, Sahota RA, Milne K, Kost SE, Nesslinger NJ, Watson PH and Nelson BH. CD20+ tumor-infiltrating lymphocytes have an atypical CD27- memory phenotype and together with CD8+ T cells promote favorable prognosis in ovarian cancer. *Clinical cancer research*. 2012; 18:3281-3292.
 20. Erdag G, Schaefer JT, Smolkin ME, Deacon DH, Shea SM, Dengel LT, Patterson JW and Slingluff CL, Jr. Immunotype and immunohistologic characteristics of tumor-infiltrating immune cells are associated with clinical outcome in metastatic melanoma. *Cancer research*. 2012; 72:1070-1080.
 21. Tao H, Lu L, Xia Y, Dai F, Wang Y, Bao Y, Lundy SK, Ito F, Pan Q, Zhang X, Zheng F, Shu G, Fang B, Jiang J, Xia J, Huang S, et al. Antitumor effector B cells directly kill tumor cells via the Fas/FasL pathway and are regulated by IL-10. *European journal of immunology*. 2015; 45:999-1009.
 22. Li Q, Teitz-Tennenbaum S, Donald EJ, Li M and Chang AE. In vivo sensitized and in vitro activated B cells mediate tumor regression in cancer adoptive immunotherapy. *Journal of immunology (Baltimore, Md : 1950)*. 2009; 183:3195-3203.
 23. Carreno BM, Magrini V, Becker-Hapak M, Kaabinejadian S, Hundal J, Petti AA, Ly A, Lie WR, Hildebrand WH, Mardis ER and Linette GP. Cancer immunotherapy. A dendritic cell vaccine increases the breadth and diversity of melanoma neoantigen-specific T cells. *Science (New York, NY)*. 2015; 348:803-808.
 24. Kemp TJ, Moore JM and Griffith TS. Human B cells express functional TRAIL/Apo-2 ligand after CpG-containing oligodeoxynucleotide stimulation. *Journal of immunology (Baltimore, Md : 1950)*. 2004; 173:892-899.
 25. Schultze JL, Michalak S, Seamon MJ, Dranoff G, Jung K, Daley J, Delgado JC, Gribben JG and Nadler LM. CD40-activated human B cells: an alternative source of highly efficient antigen presenting cells to generate autologous antigen-specific T cells for adoptive immunotherapy. *The Journal of clinical investigation*. 1997; 100:2757-2765.
 26. Chung Y, Kim BS, Kim YJ, Ko HJ, Ko SY, Kim DH and Kang CY. CD1d-restricted T cells license B cells to generate long-lasting cytotoxic antitumor immunity in vivo. *Cancer research*. 2006; 66:6843-6850.
 27. Li Q, Lao X, Pan Q, Ning N, Yet J, Xu Y, Li S and Chang AE. Adoptive transfer of tumor reactive B cells confers host T-cell immunity and tumor regression. *Clinical cancer research*. 2011; 17:4987-4995.
 28. Frade JM, Mellado M, del Real G, Gutierrez-Ramos JC, Lind P and Martinez AC. Characterization of the CCR2 chemokine receptor: functional CCR2 receptor expression in B cells. *Journal of immunology (Baltimore, Md : 1950)*. 1997; 159:5576-5584.
 29. Liao F, Shirakawa AK, Foley JF, Rabin RL and Farber JM. Human B cells become highly responsive to

- macrophage-inflammatory protein-3 alpha/CC chemokine ligand-20 after cellular activation without changes in CCR6 expression or ligand binding. *Journal of immunology* (Baltimore, Md : 1950). 2002; 168:4871-4880.
30. Weiss JM, Robinet M, Aricha R, Cufi P, Villeret B, Lantner F, Shachar I, Fuchs S, Souroujon MC, Berrih-Aknin S and Le Panse R. Novel CXCL13 transgenic mouse: inflammation drives pathogenic effect of CXCL13 in experimental myasthenia gravis. *Oncotarget*. 2016. doi: 10.18632/oncotarget.6885.
 31. Lu L, Tao H, Chang AE, Hu Y, Shu G, Chen Q, Egenti M, Owen J, Moyer JS, Prince ME, Huang S, Wicha MS, Xia JC and Li Q. Cancer stem cell vaccine inhibits metastases of primary tumors and induces humoral immune responses against cancer stem cells. *Oncoimmunology*. 2015; 4:e990767.
 32. Bulati M, Buffà S, Martorana A, Candore G, Lio D, Caruso C and Colonna-Romano G. Trafficking phenotype and production of granzyme B by double negative B cells (IgG(+)IgD(-)CD27(-)) in the elderly. *Experimental gerontology*. 2014; 54:123-129.
 33. Hahne M, Renno T, Schroeter M, Irmeler M, French L, Bornard T, MacDonald HR and Tschopp J. Activated B cells express functional Fas ligand. *European journal of immunology*. 1996; 26:721-724.
 34. Lapointe R, Bellemare-Pelletier A, Housseau F, Thibodeau J and Hwu P. CD40-stimulated B lymphocytes pulsed with tumor antigens are effective antigen-presenting cells that can generate specific T cells. *Cancer research*. 2003; 63:2836-2843.
 35. Rock KL, Benacerraf B and Abbas AK. Antigen presentation by hapten-specific B lymphocytes. I. Role of surface immunoglobulin receptors. *The Journal of experimental medicine*. 1984; 160:1102-1113.