

# Identification of Core Genes Involved in the Metastasis of Clear Cell Renal Cell Carcinoma

This article was published in the following Dove Press journal:  
*Cancer Management and Research*

Rui Peng<sup>1,\*</sup>  
Yahui Wang<sup>2,\*</sup>  
Likai Mao<sup>3</sup>  
Fang Fang<sup>4</sup>  
Han Guan<sup>1</sup> 

<sup>1</sup>Department of Urology, First Affiliated Hospital of Bengbu Medical College, Bengbu, People's Republic of China;

<sup>2</sup>Department of Urology, Sun Yat-Sen Memorial Hospital, Sun Yat-Sen University, Shenshan Central Hospital, Shanwei, People's Republic of China;

<sup>3</sup>Department of Urology, Second Affiliated Hospital of Bengbu Medical College, Bengbu, People's Republic of China; <sup>4</sup>Department of Immunology, School of Laboratory Medicine, Anhui Provincial Key Laboratory of Infection and Immunity, Bengbu Medical College, Bengbu, People's Republic of China

\*These authors contributed equally to this work

**Introduction:** Renal cell carcinoma (RCC) is one of the most common malignancies globally, among which clear cell carcinoma (ccRCC) accounts for 85–90% of all pathological types. This study aims to screen out potential genes in metastatic ccRCC so as to provide novel insights for ccRCC treatment.

**Methods:** GSE53757 and GSE84546 datasets in the Gene Expression Omnibus (GEO) were profiled to identify differentially expressed genes (DEGs) from ccRCC samples with or without metastasis. The Kyoto Encyclopedia of Genes and Genomes (KEGG) and the gene ontology (GO) analysis were performed to analyze pathway enrichment and functional annotation of DEGs. Protein–protein interaction (PPI) network was constructed, and survival analysis was conducted to evaluate the clinical values of the identified hub genes. In vitro loss-of-function assays were performed to explore the biological roles of these genes.

**Results:** The bioinformatic analysis indicated that 312 DEGs were identified, including 148 upregulated genes and 164 downregulated ones. Using PPI and Cytoscape, 10 hub genes were selected (*C3*, *CXCR4*, *CC14*, *ACKR3*, *KIF20A*, *CCNB2*, *CDCA8*, *CCL28*, *SIPR5*, and *CCL20*) from DEGs which might be closely related with ccRCC metastasis. In Kaplan–Meier analysis, three potential prognostic biomarkers (*KIF20A*, *CCNB2* and *CDCA8*) were identified. Finally, cell proliferative and invasive assays further verified that *KIF20A*, *CCNB2* and *CDCA8* were associated with the proliferation and invasion of ccRCC cells.

**Conclusion:** Our results demonstrated that metastatic ccRCC was partially attributed to the aberrant expression of *KIF20A*, *CCNB2* and *CDCA8*, and more personalized therapeutic approaches should be explored targeting these hub genes.

**Keywords:** clear cell renal cell carcinoma, hub genes, biomarkers, metastasis, differentially expressed gene

## Introduction

Renal cell carcinoma (RCC) is one of the most common malignant tumors in the world. It is estimated that approximately 74,000 new cases and 15,000 deaths of RCC may occur in the US in 2020, among which clear cell RCC (ccRCC) is the most common histological type of RCC, accounting for 85–90% of all RCC cases.<sup>1,2</sup> The five-year survival rate of patients with distant metastasis drops to 12%, despite that the likelihood of survival in early and localized ccRCC patients is comparatively higher.<sup>3</sup> The established studies in the past 10 years have been used in clinical diagnosis and treatment of renal tumors.<sup>4,5</sup> For example, it has been demonstrated that VHL (Von Hippel–Lindau) deletion directly led to mRNA alteration and facilitated RCC development. Thus, a specific drug targeting pVHL–HIF–VEGF has been utilized in clinical practice and its efficacy was shown to be

Correspondence: Han Guan  
Department of Urology, First Affiliated Hospital of Bengbu Medical College, No. 87 Zhihuai Road, Longzhihu District, Bengbu, Anhui 233000, People's Republic of China  
Tel +86 138 5522 8689  
Email gh668689@126.com

better than that of cytokine therapy.<sup>6</sup> However, the clinical prognosis of advanced and metastatic ccRCC remained unsatisfactory due to chemotherapy and radiotherapy resistance. Therefore, it is of great necessity to develop specific markers that can better predict the prognosis of ccRCC, provide new insights for the development of related drugs, reduce the incidence of advanced ccRCC, and ultimately improve the survival rate.

In recent years, microarrays based on mathematical tools can be utilized to extract useful biological information from a mass of data, identifying and analyzing the association and molecular mechanisms between key genes and central signaling pathways in tumorigenesis. In addition, data mining from high-throughput platforms can be conducted to identify significant genetic or epigenetic changes in carcinogenesis, which in turn help to select promising biomarkers for cancer diagnosis and prognosis. Mounting studies were conducted to explore the molecular mechanisms involved in RCC development through mining public datasets,<sup>7–10</sup> whereas few have been validated by experiments.

In this study, we downloaded gene expression profiles GSE53757 and GSE84546 from the Gene Expression Omnibus (GEO) containing paired advanced-stage ccRCC and normal samples to identify the differentially expressed genes (DEGs). In addition, gene ontology (GO) analysis was used to search for pathways, and a protein–protein interaction (PPI) network was constructed by the

**Table 1** Statistics of the Two Microarray Databases Derived from the GEO Database

Dataset ID	Normal	mccRCC	Total
GSE53757	15	15	30
GSE84546	3	3	6

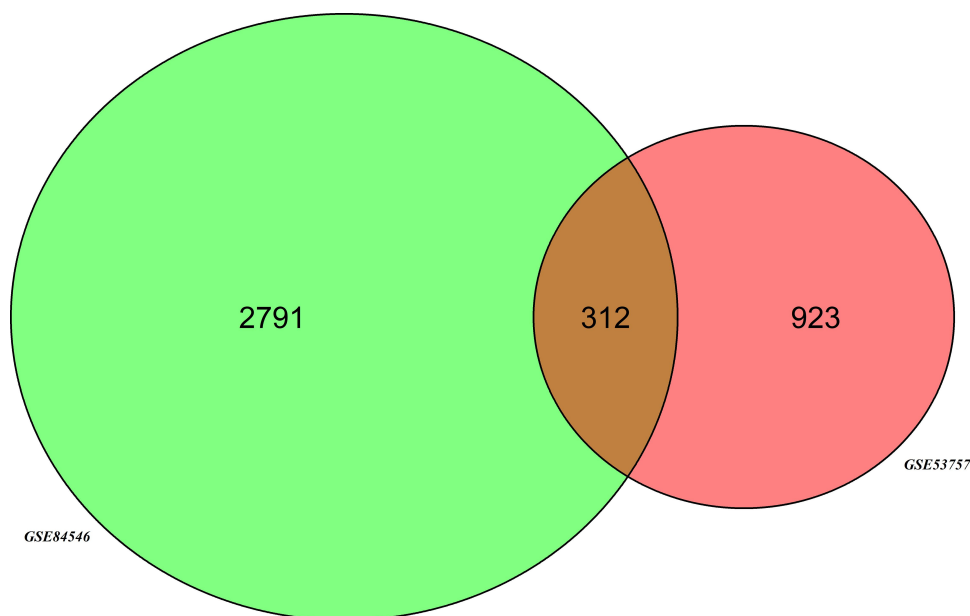
**Abbreviation:** mccRCC, metastatic clear cell renal cell carcinoma.

STRING database. The hub genes were identified by Cytoscape software. Finally, in vitro experiments were performed to verify the biological effects of typical hub genes. Collectively, the identified genes associated with the metastasis of ccRCC may shed light on novel therapeutic targets and pave the way for further exploration of the underlying mechanisms in ccRCC metastasis.

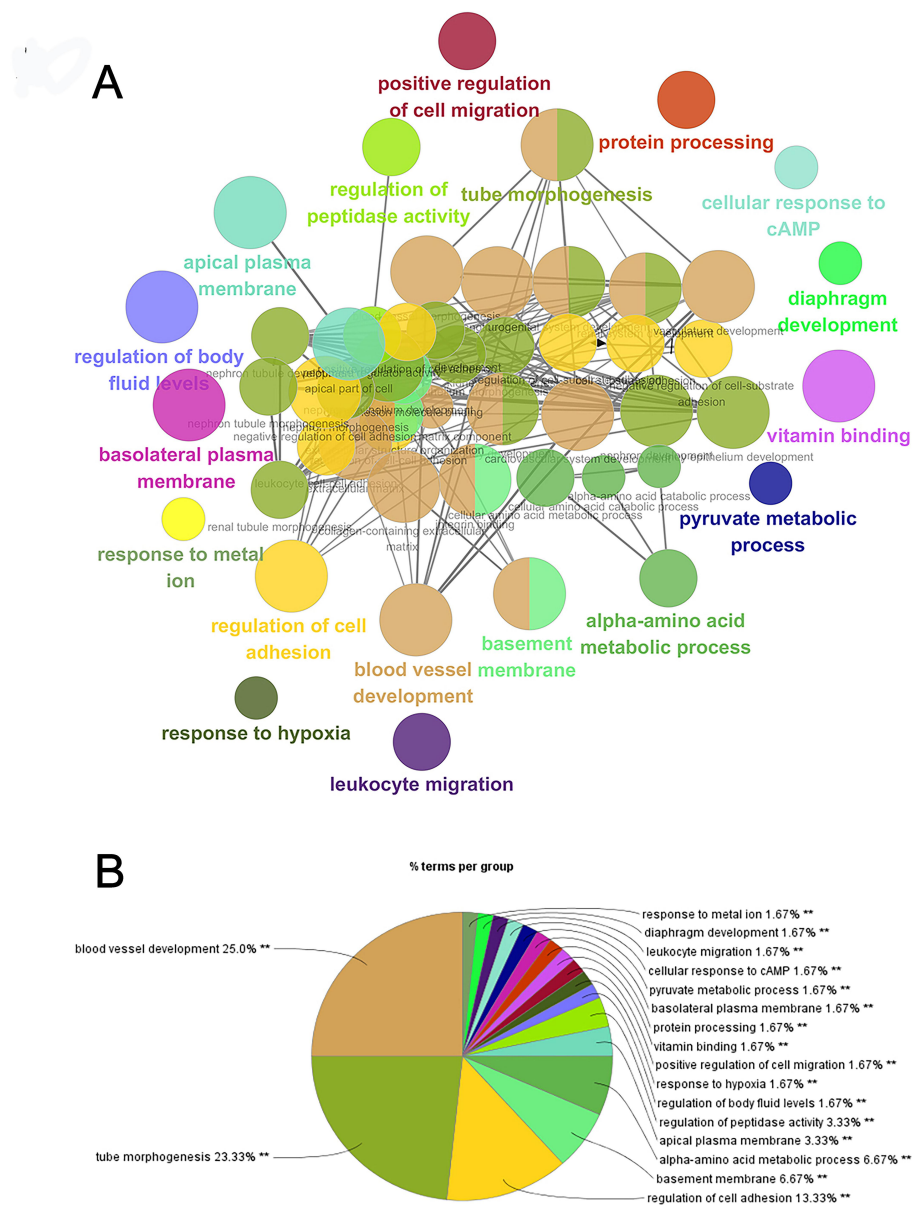
## Methods

### Download and Conversion of Microarray Data

Two gene expression profiles (GSE53757 and GSE84546)<sup>11,12</sup> were downloaded from the GEO database (<https://www.ncbi.nlm.nih.gov/geo/>). GSE53757 dataset contained 15 metastatic ccRCC (mccRCC) samples and 15 paired normal samples and GSE84546 dataset contained three mccRCC samples and three paired normal samples (Table 1). GEO-2R online tools (<http://www.ncbi.nlm.nih.gov/geo/geo-2r/>) were performed to normalize and log 2 transform the matrix data of each GEO



**Figure 1** Identification of DEGs. Venn diagram of DEGs (2791 in GSE84546 and 923 in GSE53757) was used to obtain the DEG profiles intersection. Three hundred and twelve DEGs were differentially expressed in 2 groups.



**Figure 2** Enrichment analysis of functional pathways. **(A)** GO analysis of the DEGs of metastatic ccRCC. **(B)** Pie chart of different GO terms of the DEGs.

dataset and screen out DEGs in each microarray. The value of  $|\log FC (\text{fold change})| \geq 2$  with  $P < 0.05$  was considered of statistical significance. Hierarchical clustering analysis was performed to classify the data into two groups with similar expression patterns. The Venn diagram package of R software was used to make a Venn diagram and screen out DEGs for further study.

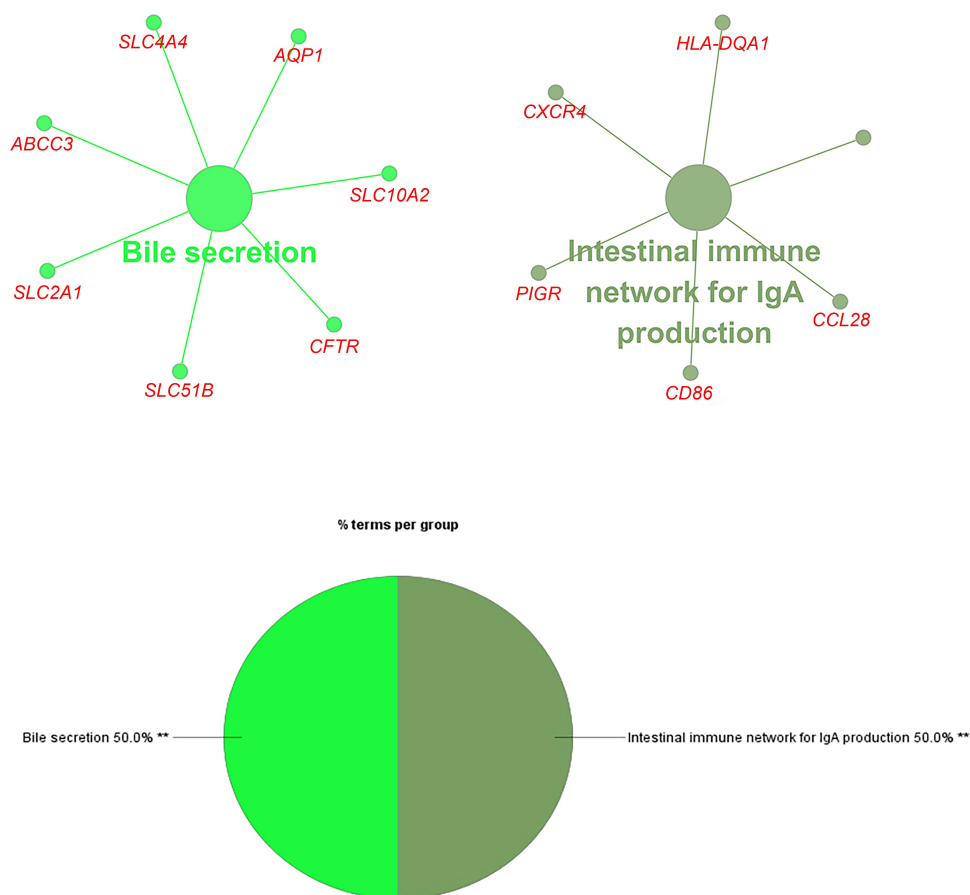
### Enrichment Analysis of Functional Pathways

Cytoscape software was utilized to construct unified conceptual framework through integrating biomolecular interaction network, high-throughput expression data and other molecular

states.<sup>13</sup> In this study, GO term enrichment<sup>14</sup> and the Kyoto Encyclopedia of Genes and Genomes (KEGG) enrichment pathway<sup>15</sup> were conducted using the plug-in ClueGO<sup>16</sup> in Cytoscape software to analyze DEGs. The enrichment analysis of GO terms includes biological process (BP), cell composition (CC) and molecular function (MC).

### Protein–Protein Interaction (PPI) Network Construction and Hub Gene Analysis

STRING and Cytoscape software were used to construct PPI network and screen key genes of PPI network.<sup>17</sup> In this study,



**Figure 3** Enrichment analysis of functional pathways. Enriched key genes involved in KEGG analysis.

STRING database (<http://string-db.org>) was used to conduct PPI network analysis of DEGs in ccRCC and normal renal samples. Key genes in PPI network were screened by CytoHubba and MCC (Maximum Clique Centrality) topology analysis algorithm was selected as the node sorting method.

## Correlation Analysis of Hub Genes Expression and Prognosis in ccRCC

In order to verify the mRNA expression level of hub genes in ccRCC, we employed HPA database (<http://www.proteinatlas.org/>) to obtain IHC staining. The total survival analyses for hub genes were conducted through online cBioPortal platform (<http://www.cbioportal.org>). UALCAN database (<http://ualcan.path.uab.edu/index.html>) was used to identify survival rate for ccRCC patients. Genes significantly associated with overall survival were considered potential biomarkers of prognosis.

## Cell Lines and Culture

The 786-O RCC cell line was purchased from the American Type Culture Collection (ATCC), and cultured in RPMI-1640 (Gibco, Thermo Fisher Scientific, USA) supplemented with 10% FBS and antibiotics. The cell line was maintained at 37°C in a humidified chamber supplemented with 5% CO<sub>2</sub>.

## Oligonucleotide and Plasmid Transfection

Short interfering RNA (siRNA) against *KIF20A*, *CCNB2* and *CDCA8* (si-*KIF20A*, si-*CCNB2* and si-*CDCA8*), and negative control siRNA with nonspecific sequences (si-NC) were purchased from Santa Cruz Biotechnology (Santa Cruz, CA, USA). For cell transfection, an equal dose (40 pmol) of si-*KIF20A*, si-*CCNB2*, si-*CDCA8*, or si-NC was transiently transfected into 786-O cells, which were seeded in six-well plates. The cells were employed in in-vitro loss-of function assays 48 h after transfection.



**Table 2** Significantly Enriched GO Terms and KEGG Pathways of DEGs

Term	Description	P-value	Count in Gene Set
GO:0001568	Blood vessel development	3.99E-11	39
GO:0035239	Tube morphogenesis	1.55E-12	48
GO:0030155	Regulation of cell adhesion	8.72E-10	43
GO:0019842	Vitamin binding	1.08E-05	14
GO:0005604	Basement membrane	3.99E-11	12
GO:0052547	Regulation of peptidase activity	2.05E-06	25
GO:0071320	Cellular response to cAMP	0.000133	8
GO:0001666	Response to hypoxia	3.82E-05	20
GO:0016324	Apical plasma membrane	4.15E-10	27
GO:0016323	Basolateral plasma membrane	4.19E-08	21
KEGG:04672	Intestinal immune network for IgA production	0.02	6
KEGG:04976	Bile secretion	0.03	7

### CCK-8 (Cell Counting Kit-8) Assay

Cells were seeded in 96-well plates with a density of  $2 \times 10^4$  cells/well. Approximately 20  $\mu$ l CCK-8 reagent was added to each well, incubated at 37°C for 10 min, and then placed on a shaker for five minutes. The OD value of each well was detected. Each assay was performed in triplicate and repeated three times.

### Transwell Assay

After transfection by si-*KIF20A*, si-*CCNB2*, and si-*CDC48* for 48 h, 786-O cells were diluted to a final concentration of  $5.0 \times 10^6$ /mL for the invasion assay. The transfected cells were placed on the filter membrane of the upper chamber of transwell and incubated at 37°C for one hour. In the lower chamber, 600  $\mu$ l of complete cell culture medium was added, and 100  $\mu$ l of cell suspension was added in the upper chamber. Afterward, 786-O cells were fixed with methanol, stained with 0.2% crystal violet, counted, and photographed under a microscope.

**Table 3** The Top 10 Hub Genes in PPI Network with Highest Degree

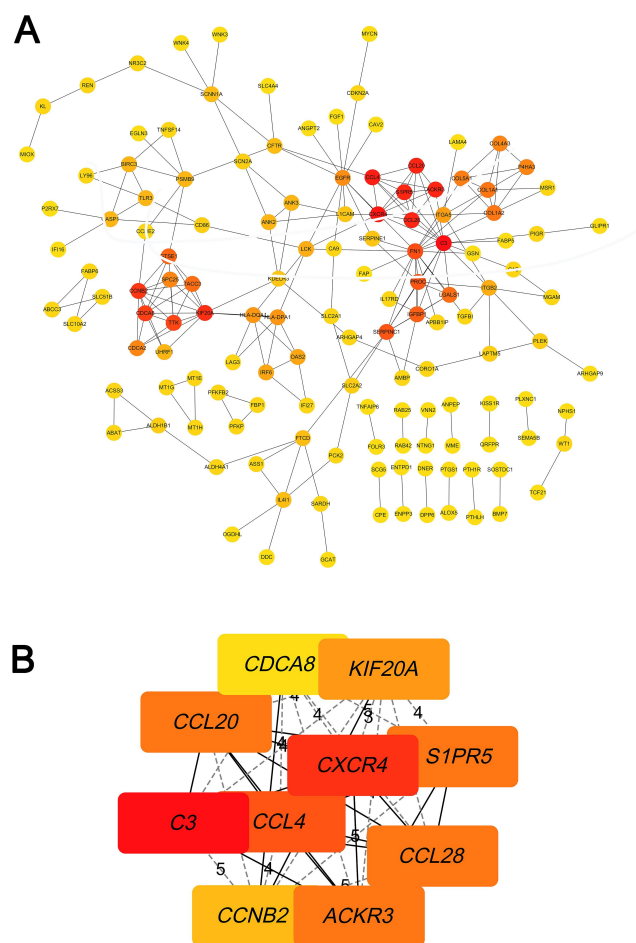
Rank	Gene	Description	Connection Score
1	<i>C3</i>	Complement component 3	845
2	<i>CXCR4</i>	C-X-C motif chemokine receptor 4	722
3	<i>CCL4</i>	C-C motif chemokine ligand 4	721
4	<i>CCL20</i>	C-C motif chemokine ligand 20	720
4	<i>ACKR3</i>	Atypical chemokine receptor 3	720
4	<i>S1PR5</i>	Sphingosine-1-phosphate receptor 5	720
4	<i>CCL28</i>	C-C motif chemokine ligand 28	720
8	<i>KIF20A</i>	Kinesin family member 20A	177
9	<i>CCNB2</i>	Cyclin B2	175
10	<i>CDCA8</i>	Cell division cycle associated 8	174

### RNA Extraction and Quantitative Real-Time PCR Analysis

Total cellular RNA isolation was carried out following the manufacturer's protocol. The synthesis of cDNA was performed using the PrimeScript RT reagent (Takara, Kusatsu, Japan) after measuring the concentration and purity of the extracted RNA. The fluorescence quantitative PCR detection of mRNAs was conducted using SYBR Premix Ex Taq I. PCR amplification was carried out with reverse-transcribed cDNA as a template and U6 snRNA as an internal control. The experimental results were analyzed quantitatively by using the standard  $2^{-\Delta\Delta Ct}$  method.

### Western Blot Analysis

Total protein was extracted from 786-O cells after lysis in RIPA buffer, and the concentration was detected by the BCA method. The buffer solution was added according to the protein concentration, and SDS-polyacrylamide gels were used in electrophoresis after adding samples. Next, the protein was transferred onto polyvinylidene fluoride (PVDF) membranes, which were then blocked using a 5% skimmed milk powder solution. The membranes were then placed in a shaker at 37°C for one hour, incubated with primary



**Figure 4** PPI network analysis and screening for hub genes. **(A)** PPI network of DEGs. **(B)** The PPI network of top 10 hub genes.

antibodies overnight at 4°C, washed by TBST buffer three times, and added with secondary antibody (1:2000) for one hour. ECL liquid was used for luminescence. X-ray film exposure was carried out in the darkroom. The primary antibodies used in this experiment were as follows: anti-*KIF20A* (ab70791, Abcam, USA), anti-*CCNB2* (ab185622, Abcam, USA), and anti-*CDCA8* antibody (ab67126, Abcam, USA). *GAPDH* was used as an internal control.

## Statistical Analysis

SPSS version 24.0 software was used for all statistical analyses. The log-rank method was applied in Kaplan–Meier analysis to determine the survival difference of hub genes. Student's *t*-test and one-way ANOVA analysis were used to compare the significance of two groups. The qPCR and Western blot results were analyzed via Wilcoxon signed-rank tests. All experiments above were repeated three times. A *P*-value of <0.05 was considered statistically significant.

## Results

### Identification of DEGs

After the standardization of GSE53757 and GSE84546 profiles, Venn analysis was performed to obtain the DEG profiles intersection (2791 in GSE84546 and 923 in GSE53757). The result showed that a total of 312 genes were markedly differentially expressed in two groups. Limma R package was used to identify 312 DEGs, among which 148 genes were upregulated and 164 downregulated. The DEGs were analyzed by hierarchical cluster analysis (Figure 1).

### Enrichment Analysis

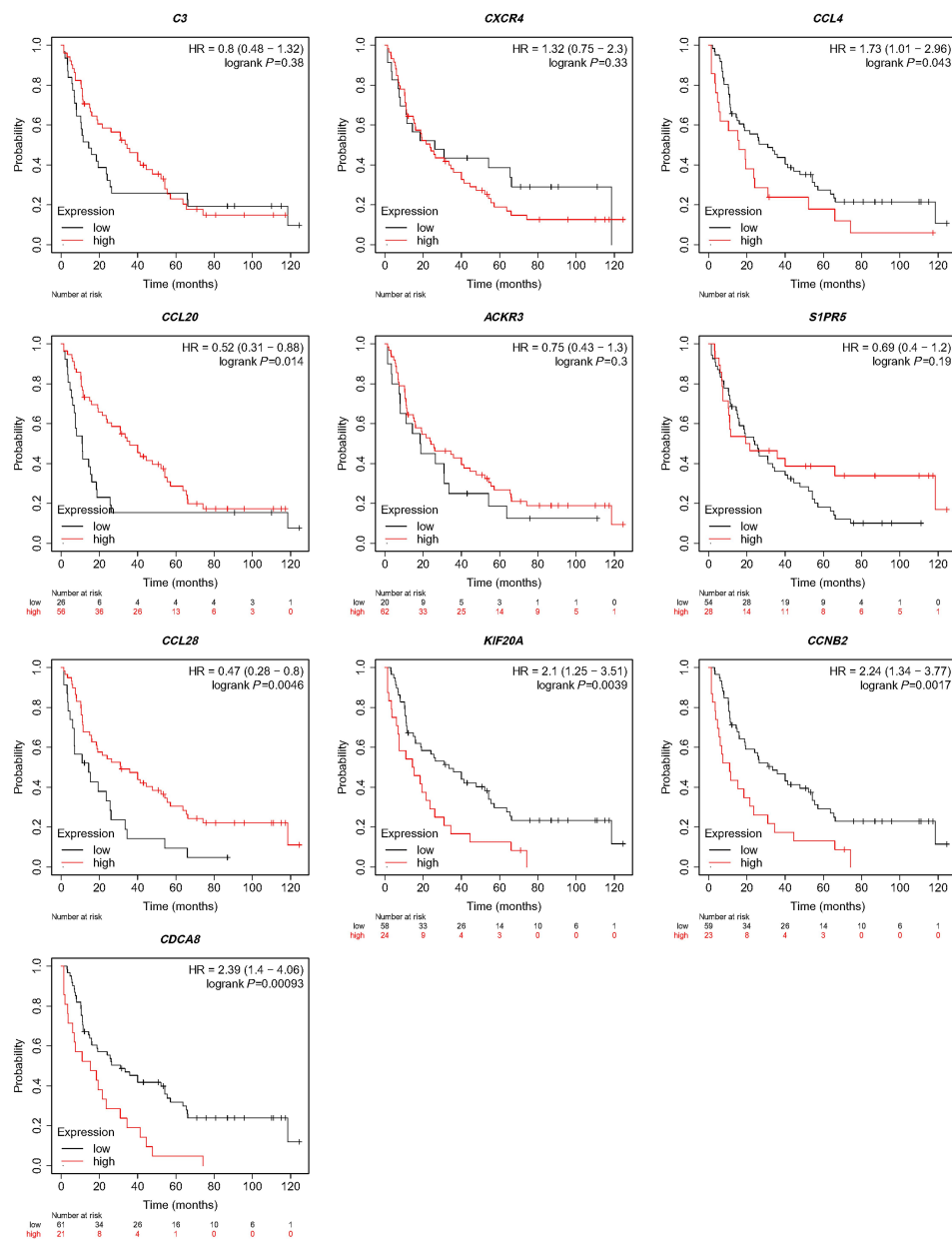
To better understand the targeted DEGs, GO function analysis was conducted by using Cytoscape plug-in ClueGo. The results presented that the DEGs were mostly enriched in the biological processes (BP) such as blood vessel development (25.0%), tube morphogenesis (23.33%) and regulation of cell adhesion (13.33%) ( $P < 0.01$ ) (Figure 2). Furthermore, KEGG pathway analysis demonstrated that DEGs were mostly aggregated in the intestinal immune network for IgA production (50.0%) and bile secretion (50.0%) ( $P < 0.05$ ) (Figure 3, Table 2).

### PPI Network Analysis and Screening for Hub Genes

PPI analysis of DEGs was predicted by online STRING software. The processed data were imported into Cytoscape to generate PPI network (Interaction score setting >0.7, strong correlation). The results revealed 301 nodes and 215 edges among the DEGs, as shown in Figure 4A. MCC topology analysis algorithm of CytoHubba tool was conducted to screen the top 10 hub genes in PPI network, including downregulated *C3*, *CXCR4*, *CCL4*, *ACKR3*, *KIF20A*, *CCNB2* and *CDCA8*. It upregulated *CCL28*, *S1PR5* and *CCL20*, with the connectivity scores of the top 10 central genes listed in Table 3 (Figure 4B, Table 3).

### Analysis of Hub Genes

The overall survival rate analysis of identified hub genes was conducted by using the Kaplan–Meier survival curve with a log-rank test. In the samples of the ccRCC patients at an advanced stage, *CCL4*, *KIF20A*, *CCNB2*, and *CDCA8* were related to worse overall survival, whereas *CCL20* and *CCL28* were accompanied by a favorable prognosis (Figure 5). Next, UALCAN online tools were employed to validate the associations between these four genes and the poor prognosis of RCC patients. *KIF20A*, *CCNB2*, and *CDCA8* were



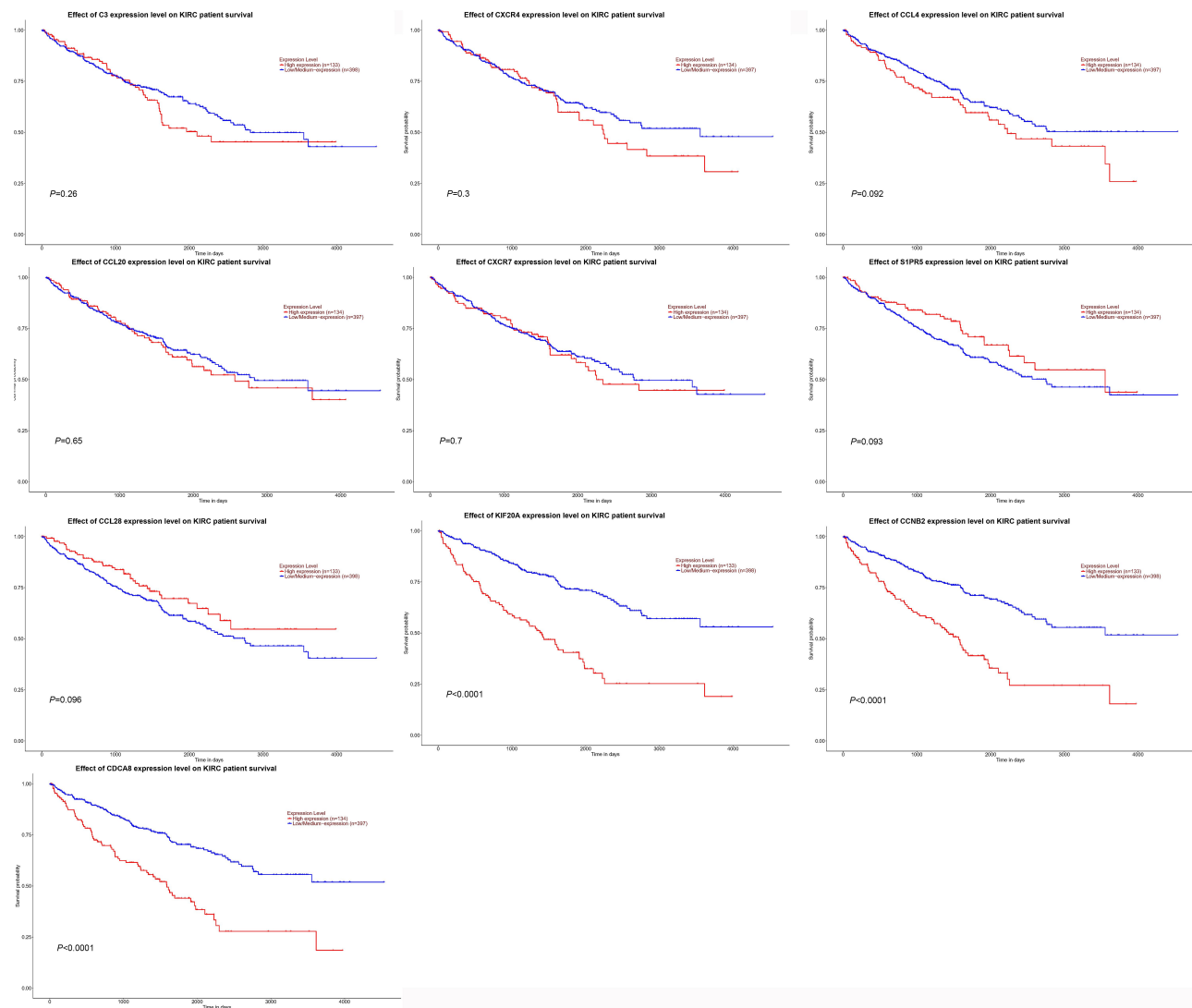
**Figure 5** Analysis for hub genes. The overall survival rate of identified hub genes was analyzed using the Kaplan–Meier survival curve.

concordantly related to unfavorable survival rates. (Figure 6). Consistently, analysis of TCGA data from the UALCAN database illustrated that *KIF20A*, *CCNB2*, and *CDCA8* were overexpressed in RCC tissues compared to normal ones, and the expressions of the screened hub genes were positively related to clinical stage and lymph node metastasis. This result suggested that *KIF20A*, *CCNB2*, and *CDCA8* might play a crucial role in the development and progression of ccRCC (Figure 7). After analyzing the HPA database, it was also found that *KIF20A*, *CCNB2*, and *CDCA8* were upregulated in RCC tissues (Figure 8). Afterward, the

association between *KIF20A*, *CCNB2*, and *CDCA8* was investigated. By using the LinkedOmics database, it was discovered that *CDCA8* was positively correlated with *CCNB2* and *KIF20A*, and *CCNB2* was positively correlated with *KIF20A* in RCC ( $P<0.001$ ) (Figure 9A–C).

## Verification of Hub Gene Expressions in RCC Tissues

Considering that *KIF20A*, *CCNB2*, and *CDCA8* were closely associated with ccRCC metastasis, the effects of these genes on the biological activities of RCC cells

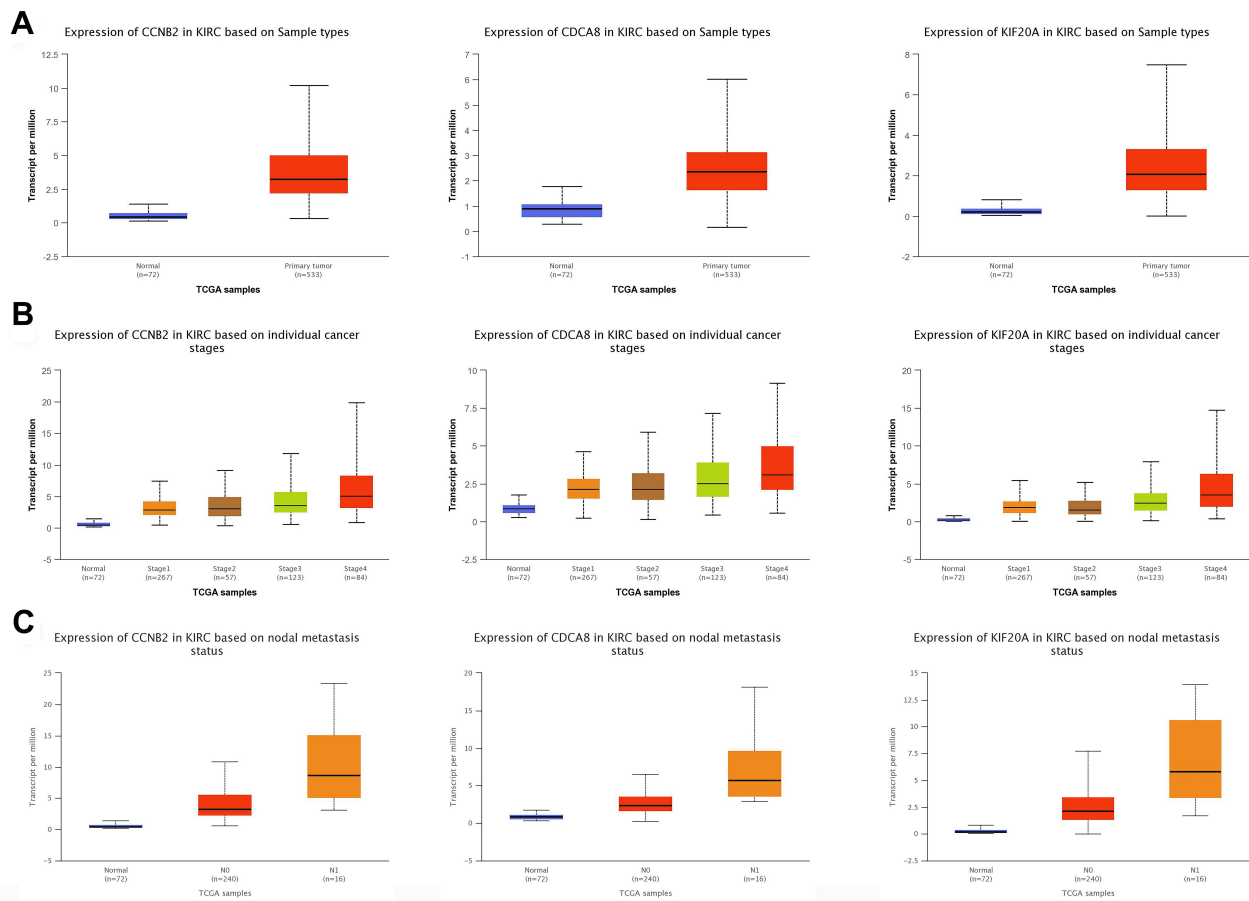


**Figure 6** Analysis for hub genes. The overall survival analyses of hub genes were performed by cBioPortal online platform using data of 531 renal cell carcinoma patients from TCGA database.

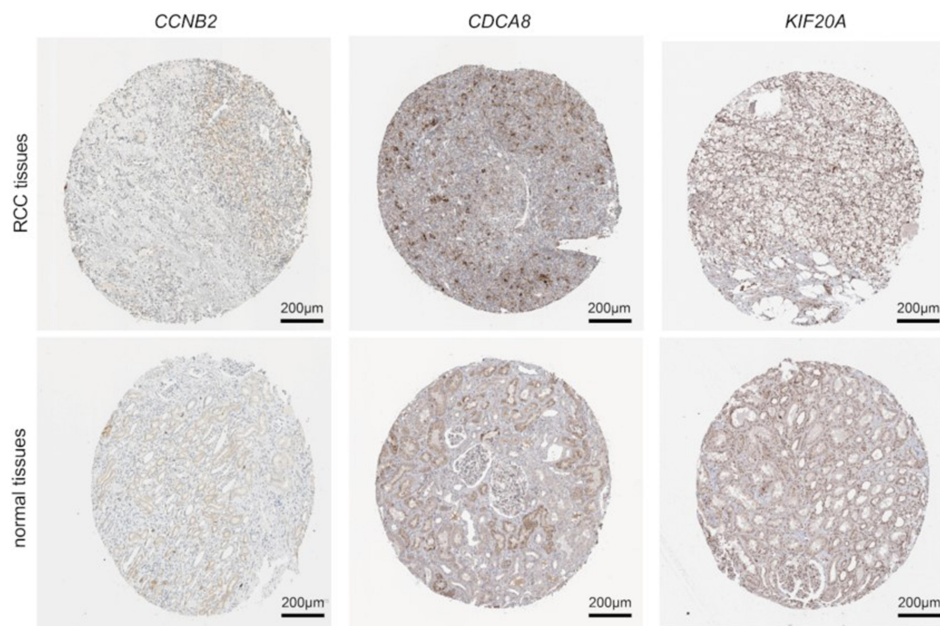
were investigated. Firstly, we validated three hub genes in normal and RRCC cells were treated with the inhibitors of *CCNB2*, *CDCA8*, and *KIF20A*, respectively. The knockdown efficiency after siRNA transfection was detected via qPCR (Figure 10A, C and E). Western blot analysis was also conducted to measure the expression difference of hub genes after the knockdown (Figure 10B, D and F). The results demonstrated that the expression of these genes was markedly decreased at mRNA and protein levels. Expectedly, the knockdown of *CCNB2*, *CDCA8*, and *KIF20A* suppressed RCC cell growth and invasion ability compared with that of si-NC-transfected cells (Figure 11A–F).

## Discussion

Despite that molecularly targeted therapies, representatively, drugs targeting vascular endothelial growth factor (VEGF) pathway and mammalian/mechanistic target of rapamycin (mTOR) pathway, have played a promising role in treating metastatic RCC, the median survival time is only 13 months, and the five-year survival rate is less than 10% due to the paucity of effective molecular targets. Even worse, the vast majority of the patients with metastatic RCC have eventually developed drug resistance, leading to unfavorable survival time. It is, therefore, important to further explore the underlying mechanisms or molecular markers for the diagnosis and treatment of ccRCC.

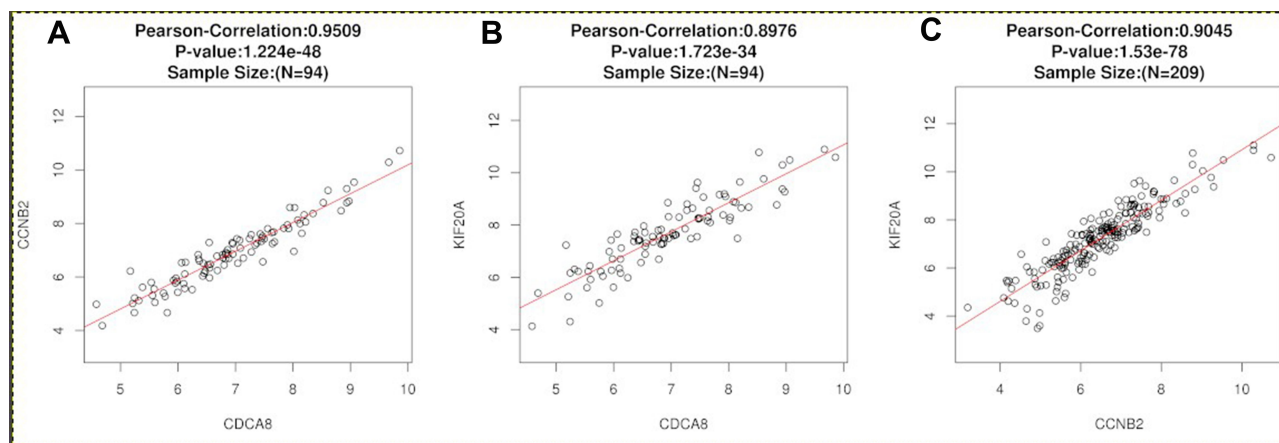


**Figure 7** Analysis for hub genes. **(A)** Association of the expression of *CCNB2*, *CDCA8*, and *KIF20A* with normal and tumor tissues. **(B)** Association of the expression of *CCNB2*, *CDCA8*, and *KIF20A* with different clinical stages. **(C)** Association of the expression of *CCNB2*, *CDCA8*, and *KIF20A* with different nodal metastasis events. **Abbreviations:** N0, renal cell carcinoma without nodal metastasis; N1, renal cell carcinoma with nodal metastasis.



**Figure 8** Analysis for hub genes. The protein expression levels of *CCNB2*, *CDCA8* and *KIF20A* in normal and RCC tissues from HPA.





**Figure 9** Analysis for hub genes. (A) The correlation between *CDCA8* and *CCNB2* in ccRCC was analyzed by LinkedOmics. (B) The correlation between *CDCA8* and *KIF20A* in ccRCC was analyzed by LinkedOmics. (C) The correlation between *CCNB2* and *KIF20A* in ccRCC was analyzed by LinkedOmics.

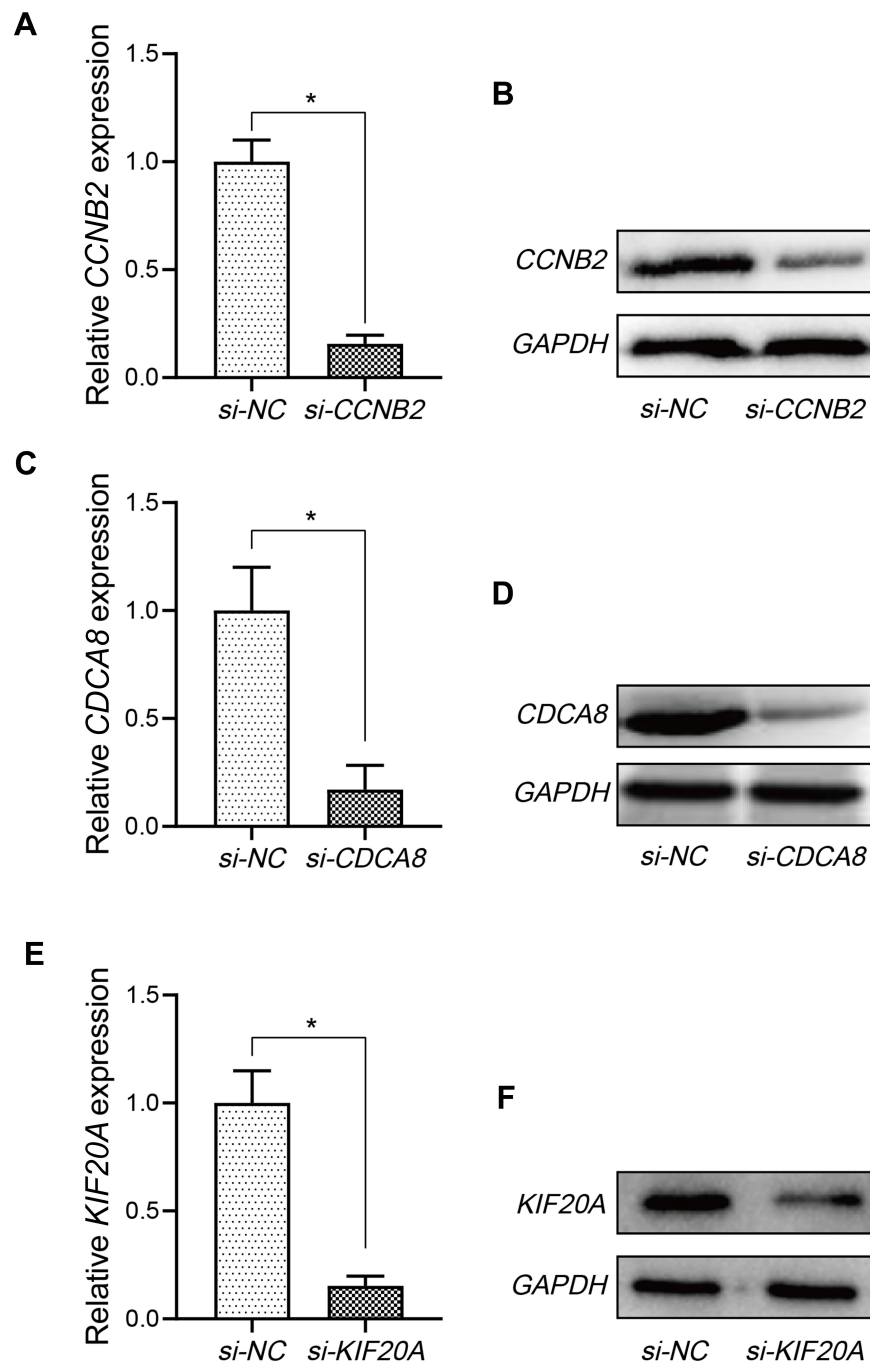
In this study, GO enrichment analysis demonstrated that DEGs are mainly enriched in the BPs such as blood vessel development, tube morphogenesis and regulation of cell adhesion. KEGG pathway analysis revealed that DEGs are mostly aggregated in intestinal immune network regulating IgA production and bile secretion. The top 10 hub genes were identified by PPI network analysis. By searching through HPA and UALCAN databases, we found that *CCNB2*, *CDCA8*, and *KIF20A* were significantly overexpressed in ccRCC tissues and closely associated with the poor prognosis of ccRCC patients. Survival analyses performed by the Kaplan–Meier method demonstrated that *CCNB2*, *CDCA8*, and *KIF20A* production were related to the survival rate of ccRCC patients. The correlation between *CCNB2*, *CDCA8* and *KIF20A* in RCC was also positively correlated with each other, illustrating that they might serve pivotal roles in the progression and metastasis of ccRCC.

*CCNB2* (cyclin B2) is a member of cyclin family proteins, which are important components in the cell cycle regulation mechanism. It has been fully demonstrated to trigger G2/M transition by activating *CDK1* kinase.<sup>18</sup> Accumulating evidence proved that *CCNB2* was overexpressed in various human cancers, such as lung cancer, colorectal adenocarcinoma, and ovarian carcinoma.<sup>19–21</sup> Moreover, it has been found that advanced clinical stage and worse metastasis status were associated with the elevated expression of circulating *CCNB2*.<sup>22</sup> As a biomarker, it has been reported that overexpression of *CCNB2* could act as an independent predictor of poor prognosis in patients with lung adenocarcinoma and breast cancer. However, little is known about the prognostic role of *CCNB2* in

metastatic ccRCC. Integrating the results from survival analysis and the differential expression in different stages, we hypothesized that *CCNB2* might act as a potential indicator and therapy target in mcrRCC treatment.

*CDCA8* is a member of the chromosomal passenger complex (CPC), which dominates cell division.<sup>23</sup> It is commonly acknowledged that dysregulation of cell cycle and uncontrolled cell proliferation are hallmarks of cancer, and loss of *CDCA8* leads to defective cell proliferation and early fetal death. Established studies have illustrated that *CDCA8* overexpression is essential for tumor development and is associated with poor prognosis in patients with cutaneous melanoma and breast cancer.<sup>24,25</sup> In this study, we observed that *CDCA8* overexpression had the same effect in ccRCC patients, especially in stage IV patients with lymph node metastasis. Our study found that *CDCA8* was upregulated in ccRCC and might act as a prognostic biomarker.

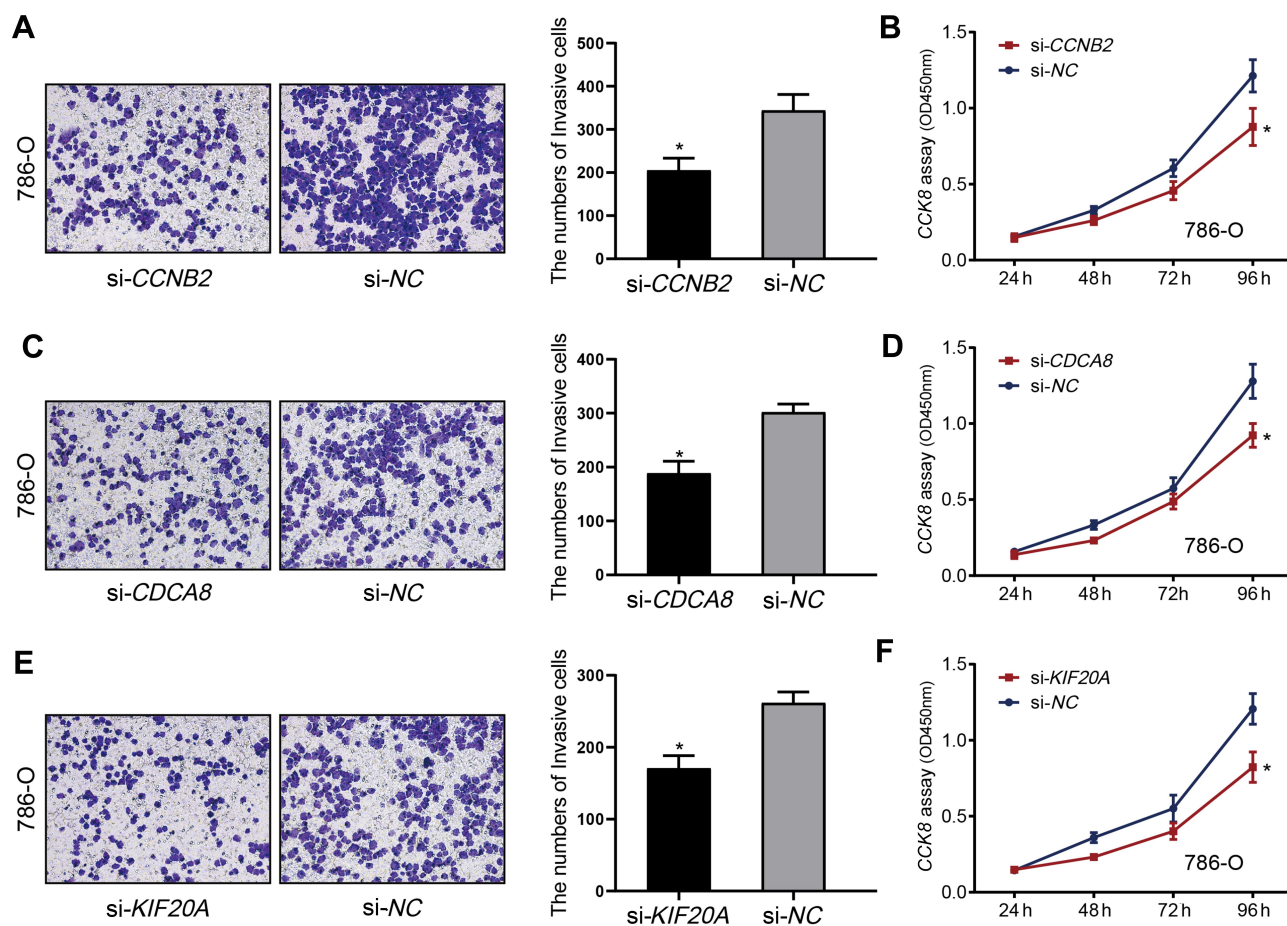
Previous studies have shown that *KIF20A* was essential for cell cycle mitosis, and its aberrant accumulation promoted cell proliferation.<sup>26,27</sup> In addition, abnormal expression of *KIF20A* participates in the carcinogenesis of multiple malignancies, including cell differentiation, invasion, and distant metastasis, which ultimately lead to drug resistance<sup>28–30</sup>. It is worth noting that *KIF20A* can not only be used as a novel biomarker for predicting prognosis but also a new potential therapeutic target in various malignant tumors through different mechanisms. Representatively, Asahara et al conducted a single-center phase I/II clinical trial utilizing a cancer vaccine reagent *KIF20A*-66 to treat advanced pancreatic cancer, which significantly prolonged the overall survival rate of patients.<sup>31</sup> Therefore, further study on the carcinogenic mechanism of



**Figure 10** Analysis for hub genes. (A, C, and E) The knockdown efficiency after si-CCNB2, si-CDCA8, and si-KIF20A transfection was detected via qPCR. (B, D, and F) The knockdown efficiency after si-CCNB2, si-CDCA8, and si-KIF20A transfection was detected via Western blot. \* $P < 0.05$ .

*KIF20A* may contribute to the development of molecularly targeted drugs. Consistently, our results echoed with previous research showing that *KIF20A* might be a key molecule affecting the development of ccRCC and as a result impeding the prognosis.

ccRcc is the most common subtype of RCC, and its tumor progression and prognosis are associated with complex gene interactions. Therefore, exploring potential molecular mechanisms or markers of ccRCC is of great necessity for the diagnosis and treatment of



**Figure 11** Verification of hub genes expression in RCC tissues. **(A)** CCK-8 assay was performed to determine cell viability of *CCNB2* on 786-O cells. **(B)** Invasion assay was performed to detect invasion ability of *CCNB2* on 786-O cells. **(C)** CCK-8 assay was performed to determine cell viability of *CDCA8* on 786-O cells. **(D)** Invasion assay was performed to detect invasion ability of *CDCA8* on 786-O cells. **(E)** CCK-8 assay was performed to determine cell viability of *KIF20A* on 786-O cells. **(F)** Invasion assay was performed to detect invasion ability of *KIF20A* on 786-O cells. Each bar represents the mean  $\pm$ SD of three independent experiments. \* $P < 0.05$ .

ccRCC. However, there are a lack of molecular markers related to the pathological stage of ccRCC. Notably, few effective treatments for metastatic ccRCC have been developed, despite that the response rate to VEGFR inhibitors is relatively favorable ( $\approx 50\%$ ). Further exploration is required considering that there is a lack of available drugs to treat metastatic RCC. In this study, we identified DEGs in metastatic ccRCC samples by using bioinformatics analysis, and screened out three hub genes *CCNB2*, *CDCA8*, and *KIF20A* associated with mcrRCC. These genes can be used as personalized therapeutic targets and diagnostic biomarkers for metastatic ccRCC. Our study may contribute to a better understanding of ccRCC and have important clinical significance in improving risk stratification, therapeutic strategy, and prognosis prediction of ccRCC patients.

## Data Sharing Statement

The data that support the findings of this study are available from the corresponding author upon reasonable request.

## Acknowledgments

This study was supported by grants from National Science Foundation of China [81801573], Science Foundation of Anhui Province [2008085QH358, KJ2018A0214, KJ2019A0355], First Affiliated Hospital of Bengbu Medical College Science Fund for Outstanding Young Scholars [2019BYYFYQ09]. The funders had no role in study design, data collection and analysis, decision to publish, or preparation of the manuscript.

## Disclosure

The authors report no conflicts of interest in this work.

## References

- Siegel R, Miller K, Jemal A. Cancer statistics, 2020. *CA Cancer J Clin.* 2020;70(1):7–30. doi:10.3322/caac.21590
- Vecchio S, Ellis R. Cabozantinib for the management of metastatic clear cell renal cell carcinoma. *J Kidney Cancer.* 2018;5(4):1–5. doi:10.15586/jkcvhl.2018.109
- Atkins M, Tannir N. Current and emerging therapies for first-line treatment of metastatic clear cell renal cell carcinoma. *Cancer Treat Rev.* 2018;70:127–137. doi:10.1016/j.ctrv.2018.07.009
- Thomas G, Tran C, Mellinghoff I, et al. Hypoxia-inducible factor determines sensitivity to inhibitors of mTOR in kidney cancer. *Nat Med.* 2006;12(1):122–127. doi:10.1038/nm1337
- Vachhani P, George S. VEGF inhibitors in renal cell carcinoma. *Clin Adv Hematol Oncol.* 2016;14(12):1016–1028.
- Kammerer-Jacquet S, Crouzet L, Brunot A, et al. Independent association of PD-L1 expression with noninactivated VHL clear cell renal cell carcinoma-A finding with therapeutic potential. *Int J Cancer.* 2017;140(1):142–148. doi:10.1002/ijc.30429
- Yamamura S, Kawakami K, Hirata H, et al. Oncogenic functions of secreted Frizzled-related protein 2 in human renal cancer. *Mol Cancer Ther.* 2010;9(6):1680–1687. doi:10.1158/1535-7163.MCT-10-0012
- Gu Y, Lu L, Wu L, et al. Identification of prognostic genes in kidney renal clear cell carcinoma by RNA-seq data analysis. *Mol Med Rep.* 2017;15(4):1661–1667. doi:10.3892/mmr.2017.6194
- Yuan L, Chen L, Qian K, et al. Co-expression network analysis identified six hub genes in association with progression and prognosis in human clear cell renal cell carcinoma (ccRCC). *Genom Data.* 2017;14:132–140. doi:10.1016/j.gdata.2017.10.006
- Wei W, Lv Y, Gan Z, et al. Identification of key genes involved in the metastasis of clear cell renal cell carcinoma. *Oncol Lett.* 2019;17(5):4321–4328.
- von Roemeling C, Radisky D, Marlow L, et al. Neuronal pentraxin 2 supports clear cell renal cell carcinoma by activating the AMPA-selective glutamate receptor-4. *Cancer Res.* 2014;74(17):4796–4810. doi:10.1158/0008-5472.CAN-14-0210
- Khan M, Czarnicka A, Lewicki S, et al. Comparative gene expression profiling of primary and metastatic renal cell carcinoma stem cell-like cancer cells. *PLoS One.* 2016;11(11):e0165718. doi:10.1371/journal.pone.0165718
- Smoot M, Ono K, Ruscheinski J, et al. Cytoscape 2.8: new features for data integration and network visualization. *Bioinformatics.* 2011;27(3):431–432. doi:10.1093/bioinformatics/btq675
- Ashburner M, Ball C, Blake J, et al. Gene ontology: tool for the unification of biology. The Gene Ontology Consortium. *Nat Genet.* 2000;25(1):25–29. doi:10.1038/75556
- Kanehisa M. The KEGG database. *Novartis Found Symp.* 2002;247:91–101; discussion 101–3, 119–28, 244–52.
- Bindea G, Mlecnik B, Hackl H, et al. ClueGO: a Cytoscape plug-in to decipher functionally grouped gene ontology and pathway annotation networks. *Bioinformatics.* 2009;25(8):1091–1093. doi:10.1093/bioinformatics/btp101
- Lopes C, Franz M, Kazi F, et al. Cytoscape web: an interactive web-based network browser. *Bioinformatics.* 2010;26(18):2347–2348. doi:10.1093/bioinformatics/btq430
- Li H, Tian X, Wang P, et al. MicroRNA-582-3p negatively regulates cell proliferation and cell cycle progression in acute myeloid leukemia by targeting cyclin B2. *Cell Mol Biol Lett.* 2019;24:66. doi:10.1186/s11658-019-0184-7
- Fridley B, Dai J, Raghavan R, et al. Transcriptomic characterization of endometrioid, clear cell, and high-grade serous epithelial ovarian carcinoma. *Cancer Epidemiol Biomarkers Prev.* 2018;27(9):1101–1109. doi:10.1158/1055-9965.EPI-17-0728
- Zhu X, Wang D, Lin Q, et al. Screening key lncRNAs for human rectal adenocarcinoma based on lncRNA-mRNA functional synergistic network. *Cancer Med.* 2019;8(8):3875–3891. doi:10.1002/cam4.2236
- Niemira M, Collin F, Szalkowska A, et al. Molecular signature of subtypes of non-small-cell lung cancer by large-scale transcriptional profiling: identification of key modules and genes by weighted gene co-expression network analysis (WGCNA). *Cancers.* 2019;12(1):37. doi:10.3390/cancers12010037
- Mo M-L, Chen Z, Li J, et al. Use of serum circulating CCNB2 in cancer surveillance. *Int J Biol Markers.* 2010;25(4):236–242. doi:10.5301/IJBM.2010.6088
- Hindriksen S, Meppelink A, Lens S. Functionality of the chromosomal passenger complex in cancer. *Biochem Soc Trans.* 2015;43(1):23–32. doi:10.1042/BST20140275
- Ci C, Tang B, Lyu D, et al. Overexpression of CDCA8 promotes the malignant progression of cutaneous melanoma and leads to poor prognosis. *Int J Mol Med.* 2019;43(1):404–412.
- Phan N, Wang C, Kl L, et al. Distinct expression of CDCA3, CDCA5, and CDCA8 leads to shorter relapse free survival in breast cancer patient. *Oncotarget.* 2018;9(6):6977–6992. doi:10.18632/oncotarget.24059
- Yan G, Zou F, Dang B, et al. Genistein-induced mitotic arrest of gastric cancer cells by downregulating KIF20A, a proteomics study. *Proteomics.* 2012;12(14):2391–2399.
- Qiu R, Runxiang Q, Geng A, et al. SEPT7 Interacts with KIF20A and regulates the proliferative state of neural progenitor cells during cortical development. *Cereb Cortex.* 2020;30(5):3030–3043. doi:10.1093/cercor/bhz292
- Zhao X, Zhou L, Li X, et al. Overexpression of KIF20A confers malignant phenotype of lung adenocarcinoma by promoting cell proliferation and inhibiting apoptosis. *Cancer Med.* 2018;7(9):4678–4689. doi:10.1002/cam4.1710
- Saito K, Ohta S, Kawakami Y, et al. Functional analysis of KIF20A, a potential immunotherapeutic target for glioma. *J Neurooncol.* 2017;132(1):63–74. doi:10.1007/s11060-016-2360-1
- Khongkow P, Gomes A, Gong C, et al. Paclitaxel targets FOXM1 to regulate KIF20A in mitotic catastrophe and breast cancer paclitaxel resistance. *Oncogene.* 2016;35(8):990–1002. doi:10.1038/onc.2015.152
- Asahara S, Takeda K, Yamao K, et al. Phase I/II clinical trial using HLA-A24-restricted peptide vaccine derived from KIF20A for patients with advanced pancreatic cancer. *J Transl Med.* 2013;11:291. doi:10.1186/1479-5876-11-291

### Cancer Management and Research

Dovepress

### Publish your work in this journal

Cancer Management and Research is an international, peer-reviewed open access journal focusing on cancer research and the optimal use of preventative and integrated treatment interventions to achieve improved outcomes, enhanced survival and quality of life for the cancer patient.

The manuscript management system is completely online and includes a very quick and fair peer-review system, which is all easy to use. Visit <http://www.dovepress.com/testimonials.php> to read real quotes from published authors.

Submit your manuscript here: <https://www.dovepress.com/cancer-management-and-research-journal>