

# Adenosine 2A Receptor Antagonist Prevented and Reversed Liver Fibrosis in a Mouse Model of Ethanol-Exacerbated Liver Fibrosis

Dian J. Chiang<sup>1</sup>, Sanjoy Roychowdhury<sup>2</sup>, Katelyn Bush<sup>2</sup>, Megan R. McMullen<sup>2</sup>, Sorana Pisano<sup>2</sup>, Kathryn Niese<sup>2</sup>, Mitchell A. Olman<sup>2</sup>, Michele T. Pritchard<sup>2\*</sup>, Laura E. Nagy<sup>1,2,3\*</sup>

**1** Center for Liver Disease Research, Department of Gastroenterology and Hepatology, Cleveland Clinic, Cleveland, Ohio, United States of America, **2** Department of Pathobiology, Cleveland Clinic, Cleveland, Ohio, United States of America, **3** Department of Molecular Medicine, Cleveland Clinic Lerner College of Medicine, Cleveland, Ohio, United States of America

## Abstract

The effect of moderate alcohol consumption on liver fibrosis is not well understood, but evidence suggests that adenosine may play a role in mediating the effects of moderate ethanol on tissue injury. Ethanol increases the concentration of adenosine in the liver. Adenosine 2A receptor (A2AR) activation is known to enhance hepatic stellate cell (HSC) activation and A2AR deficient mice are protected from fibrosis in mice. Making use of a novel mouse model of moderate ethanol consumption in which female C57BL/6J mice were allowed continued access to 2% (vol/vol) ethanol (11% calories) or pair-fed control diets for 2 days, 2 weeks or 5 weeks and superimposed with exposure to CCl<sub>4</sub>, we tested the hypothesis that moderate ethanol consumption increases fibrosis in response to carbon tetrachloride (CCl<sub>4</sub>) and that treatment of mice with an A2AR antagonist prevents and/or reverses this ethanol-induced increase in liver fibrosis. Neither the expression or activity of CYP2E1, required for bio-activation of CCl<sub>4</sub>, nor AST and ALT activity in the plasma were affected by ethanol, indicating that moderate ethanol did not increase the direct hepatotoxicity of CCl<sub>4</sub>. However, ethanol feeding enhanced HSC activation and exacerbated liver fibrosis upon exposure to CCl<sub>4</sub>. This was associated with an increased sinusoidal angiogenic response in the liver. Treatment with A2AR antagonist both prevented and reversed the ability of ethanol to exacerbate liver fibrosis.

**Conclusion:** Moderate ethanol consumption exacerbates hepatic fibrosis upon exposure to CCl<sub>4</sub>. A2AR antagonism may be a potential pharmaceutical intervention to decrease hepatic fibrosis in response to ethanol.

**Citation:** Chiang DJ, Roychowdhury S, Bush K, McMullen MR, Pisano S, et al. (2013) Adenosine 2A Receptor Antagonist Prevented and Reversed Liver Fibrosis in a Mouse Model of Ethanol-Exacerbated Liver Fibrosis. PLoS ONE 8(7): e69114. doi:10.1371/journal.pone.0069114

**Editor:** Wing-Kin Syn, Institute of Hepatology, Foundation for Liver Research, United Kingdom

**Received:** December 18, 2012; **Accepted:** June 6, 2013; **Published:** July 18, 2013

**Copyright:** © 2013 Chiang et al. This is an open-access article distributed under the terms of the Creative Commons Attribution License, which permits unrestricted use, distribution, and reproduction in any medium, provided the original author and source are credited.

**Funding:** The study was supported by DOD grant W81XWH-10-1-0100 to LEN, NIH P20 AA17069 to LEN, NIH K99/R00 AA017918 to MTP, NIH HL103553 and HL085324 to MAO and American Liver Foundation Postdoctoral Fellowship Award to DJC and additional support from the Case Western Reserve University/Cleveland Clinic CTSA UL1RR024989. The funders had no role in study design, data collection and analysis, decision to publish, or preparation of the manuscript.

**Competing Interests:** The authors have declared that no competing interests exist.

\* E-mail: nagyL3@ccf.org

† Current address: Department of Pharmacology, Toxicology and Therapeutics, University of Kansas Medical Center, Kansas City, Kansas, United States of America

## Introduction

The development of liver fibrosis is a complex and dynamic process involving both the parenchymal and non-parenchymal cells in the liver in response to damage and inflammation [1]. The hallmark of this process is the activation of hepatic stellate cell (HSC), the primary source of extracellular matrix (ECM) production in the injured liver [1]. Alcoholic liver disease (ALD) is one of the major causes of liver fibrosis [2]. Studies in patients with alcoholic cirrhosis find that women are more susceptible to ethanol-induced liver injury and female gender is an independent risk factor for cirrhosis [3–5]. Our understanding of ethanol-induced liver fibrosis is largely derived from studies of heavy alcohol consumption in human. However, the role of moderate alcohol consumption in liver fibrosis and its impact on a secondary liver injury is not well understood.

Studies of the effect of moderate alcohol on chronic liver disease and fibrosis are hampered by lack of appropriate animal model. By

using 2%(vol/vol) (11% of calories) ethanol feeding in conjunction with CCl<sub>4</sub> exposure in mice, we established a novel animal model to recapitulate moderate alcohol consumption with a superimposed hepatic toxin. The amount of ethanol intake in this model is equivalent of 2 drinks of alcohol a day in human. We hypothesized that moderate ethanol intake, at a level not sufficient to induce CYP2E1 or cause liver injury by itself, may exacerbate hepatic fibrosis in the setting of a superimposed hepatic injury.

One potential pathway by which moderate alcohol could exacerbate fibrosis is via localized tissue hypoxia and subsequent adenosine receptor activation. Adenosine is a ubiquitously produced signaling molecule with increased concentration in the site of tissue injury and hypoxia [6]. Extracellular adenosine signals through four G-protein coupled adenosine receptors, A1, A2A, A2B, and A3 [6]. Ethanol causes hepatic hypoxia [7] and increases adenosine in the liver by multiple mechanisms including, ethanol metabolism and oxidation, inhibiting the uptake of

adenosine via the equilibrative nucleoside transporter, as well as metabolism of AMP via ecto-5'-nucleotidase (CD73) [8–10]. The role of adenosine and the downstream pathways of adenosine receptor activation in liver injury and fibrosis are not completely understood. A2AR deficient mice are protected from CCl<sub>4</sub>- or thioacetamide- induced fibrosis [11]. Further, A2AR activation enhances HSC activation [12]. A2AR activation also signals through the PI3K/PKB/Akt in the development of hypoxic preconditioning of hepatocytes [13] and increases angiogenesis in response to injury [14]. On the other hand, A2AR also plays a key role in down-regulating immune response upon injury [15]. Mice deficient in A2AR display elevated and prolonged production of proinflammatory cytokines, including TNF $\alpha$  and IFN $\gamma$ , in response to challenge with lipopolysaccharide (LPS) [16]. However, the role of adenosine and A2AR activation in the progression of fibrosis is not well studied. Several epidemiological studies have suggested that the consumption of coffee, which contains an adenosine receptor antagonist, caffeine, significantly diminishes hepatic injury and disease progression in patients with chronic liver disease [17]. Here we evaluated the preventive, as well as therapeutic effect of A2AR antagonist in a mouse model of ethanol-exacerbated liver fibrosis.

## Materials and Methods

### Materials

CCl<sub>4</sub> and olive oil were purchased from Sigma-Aldrich (St. Louis, MO). A2AR antagonist (KW-6002) was prepared and provided by Gilead (Foster City, CA). Pair-fed control diet and modified Lieber-DeCarli high-fat diet were purchased from Dyets, Inc (Bethlehem, PA). All primers for quantitative real-time reverse-transcription PCR (qRT-PCR) were synthesized by Integrated DNA Technologies (Coralville, IA). Primary antibodies were purchased from the following companies: Cytochrome P450 2E1 (CYP2E1): Research Diagnostics, Inc (Flanders, NJ); HSC 70: Santa Cruz (Santa Cruz, CA);  $\alpha$ -smooth muscle actin ( $\alpha$ -SMA, clone 1A6): Sigma-Aldrich (St. Louis, MO), Collagen 1: Southern Biotech (Birmingham, AL), CD31: Gene Tex (Irvine, CA).

### Animals

Female C57BL/6J mice (10–12 week-old) were purchased from Jackson Laboratory. Animals were housed in standard micro-isolator cages and fed standard laboratory chow (rodent diet #2918, Harlan-Teklad, Madison, WI) prior to initiation of liquid diet feeding. All animal procedures were approved by the Cleveland Clinic Institutional Animal Care and Use Committee.

### Ethanol Feeding and CCl<sub>4</sub> Administration

We established three independent mouse models to evaluate the response to moderate ethanol consumption and CCl<sub>4</sub> exposure. In the 72 hour acute CCl<sub>4</sub> model, mice were fed a control-liquid diet for 2 days, then 1% (vol/vol) ethanol diet for 2 days, then 2% (vol/vol) (11% calories) ethanol diet and one single intraperitoneal (IP) injection of olive oil or CCl<sub>4</sub> (prediluted 1:3 in olive oil, administered at a dose of 1  $\mu$ l/g body weight of prediluted CCl<sub>4</sub> using 100  $\mu$ l Hamilton syringes and 26G 5/8 inch needles) on day 4. Mice were euthanized 72 hours after injection with CCl<sub>4</sub>. In some experiments, peripheral blood was collected via saphenous vein 24 and 48 hours after injection with CCl<sub>4</sub>. In the 2 week model, the mice were fed with control-liquid diet for 2 days, 1% (vol/vol) ethanol diet for 2 days, then 2% (vol/vol) ethanol diet and IP injection of olive oil or CCl<sub>4</sub> twice per week for 2 weeks. In the 5 week chronic CCl<sub>4</sub> model, the mice were fed with control-

liquid diet for 2 days, then 1% (vol/vol) ethanol diet for 2 days, then 2% (vol/vol) ethanol diet and an IP injection of olive oil or CCl<sub>4</sub> twice a week for 5 weeks. For the 2 week and 5 week models, mice were ramped up to the full dose of CCl<sub>4</sub> over two doses (first injection at 0.25  $\mu$ l/g body weight, the second at 0.5  $\mu$ l/g body weight). 72 hours after the last CCl<sub>4</sub> injection, mice were weighed and anesthetized. Blood was collected from the posterior vena cava by syringe and expelled into EDTA-containing tubes. Livers were excised and mice were then euthanized by exsanguination. Livers were weighed and portions fixed in formalin, frozen in Optimal Cutting Temperature medium (Sakura Finetek USA, Torrance, CA), snap frozen in liquid nitrogen, or stored in RNAlater (Ambion, Austin, TX) for further analysis. Plasma was separated from whole blood and stored at  $-80^{\circ}\text{C}$ .

### A2AR Antagonist Administration

A2AR antagonist (KW-6002) (1 mg/ml in normal saline) or normal saline vehicle as control was given to the mice at a dose of 10 mg per kg of body weight subcutaneously. The dose and route of A2AR antagonist KW-6002 administration was chosen based on previously published data for the pharmacokinetics of this compound [18]. The dosing regimen was chosen to achieve drug concentrations sufficient to antagonize the A2AR, but still maintain specificity for A2AR in mice. Intraperitoneal administration of KW-6002 at 25 mg/kg to C57BL/6J mice reaches C<sub>max</sub> of 1030 ng/ml at 1.5 hrs; the half-life of KW-6002 is 11.6 hrs (personal communication with Jeff Zablocki at Gilead). KW-6002 is a selective A2AR antagonist in mice with binding affinity of 1.87 nM for A2AR compared to 105.02 nM for A1R [19]. KW-6002 has binding affinity of 151.8 nM for A2AR compared to 11169 nM for A1R, 2701 nM for A2BR and 1939 nM for A3R when assessed in human receptors overexpressed in CHO and HEK293 cells [18]. The molecular weight of KW-6002 is 384.43. Therefore, KW-6002 administration at 10 mg/kg would result in an effective concentration of approximately 1 nM, a concentration highly specific for A2AR. Three treatment protocols were used: 1) To study the effect of A2AR antagonist on the inflammatory and angiogenic cytokine mRNA response, a short time course study was performed with single injection of CCl<sub>4</sub>. Mice were pre-treated with KW-6002 and then challenged with CCl<sub>4</sub> and euthanized at 4 hour, 8 hour and 24 hour time points. 2) To study the preventive effect of A2AR antagonist, KW-6002 was given one hour prior to each CCl<sub>4</sub> administration in the 2 week models, and 3) To study the therapeutic effect of A2AR antagonist in resolving established liver fibrosis, KW-6002 was given once daily for 5 days in the last week of the 5 week model.

### Liver Hypoxia: Pimonidazole Adduct Formation

C57BL/6J wild-type mice were allowed free access to diets with increasing concentrations of ethanol to 2% ethanol vol/vol (11% of calories) or pair-fed controls for 4 days. All animals were injected intraperitoneally with pimonidazole (120 mg/Kg) 1 hour before euthanasia. Paraffin-embedded liver sections were deparaffinized and stained for pimonidazole-adducts using a kit from Hypoxyprobe (Burlington, MA).

### Biochemical Assays

Plasma samples were assayed for ALT and AST using commercially available enzymatic assay kits (Diagnostic Chemicals, Ltd., Oxford, CT) following the manufacturer's instructions. CYP2E1 activity was determined by measuring the hydroxylation of *p*-nitrophenol in whole liver extract as described [20]. Hepatic collagen content was determined by measuring hydroxyproline concentration in a colorimetric assay. In brief, 300–400 mg tissue

was excised from the left and right lobes of the liver, homogenized and hydrolyzed in 6N HCL at 120°C for 16 hours. The hydrolysate was filtered and the amount of hydroxyproline in the liver acid-hydrolysates was determined by colorimetric assay [21,22].

#### qRT-PCR

Total RNA was isolated from liver and 4 µg of total hepatic RNA was reverse transcribed as previously described [23]. Real-time PCR amplification of Col1A1, Col1A2,  $\alpha$ -SMA, angiotensin 1 (ANGP1), TNF $\alpha$  and macrophage inflammatory protein-2 (MIP2) was performed using Brilliant SYBR Green QPCR Master Mix (Stratagene, La Jolla, CA) in an Mx3000p PCR machine (Stratagene). The relative amount of target mRNA was determined using the comparative threshold ( $C_t$ ) method by normalizing target mRNA  $C_t$  values to those of 18S [24].

#### Liver Homogenate and Immunoblotting

Liver homogenates were prepared and protein concentrations were determined for immunoblotting [23]. 35 µg of protein were resolved on 15% polyacrylamide gels and transferred to polyvinylidene fluoride membranes. Membranes were probed with antibodies specific for CYP2E1; HSC 70 was used as loading control.

#### Morphological Assessment

For histological analysis of ECM deposition, formalin-fixed tissues were paraffin-embedded, sectioned (5 µm), and stained with Sirius red. The presentation and distribution of  $\alpha$ -SMA was studied by using formalin-fixed paraffin embedded liver sections (5 µm) via immunochemical staining [24]. Frozen liver sections were used for immunostaining of CD31, a marker for vascular endothelial cells and collagen 1 [25,26]. Slides were coded before examination and viewed by a single investigator who was blinded to the treatment. All images presented in the results are representative of at least 3 images per liver and 4 to 6 mice per experimental condition. Semi-quantification of positive staining was performed using ImagePro plus software (Media Cybernetics, Silver Spring, MD).

#### Statistical Analysis

Values reported are means  $\pm$  SEM. The data were analyzed by general linear models procedure (SAS, Carey, NC) followed by least square means or Tukey's analysis of differences between groups.  $P$  values of less than 0.05 were considered significant.

## Results

### Moderate Ethanol Intake did not Induce CYP2E1 or Affect Hepatotoxicity of CCl<sub>4</sub>

The rate-limiting step for CCl<sub>4</sub> toxicity is its bioactivation to CCl<sub>3</sub> through CYP2E1 [20]. Since CYP2E1 is induced by high concentrations of ethanol [27], any effect of ethanol may be confounded by the increased bioactivation of CCl<sub>4</sub>. Here we made use of a novel mouse model using 2%(vol/vol) ethanol diet and exposed the mice to CCl<sub>4</sub>. Ethanol feeding alone did not increase AST or ALT, compared to pair-fed mice, at any time point studied. Plasma AST and ALT activity increased after injection of CCl<sub>4</sub>. ALT in the plasma reached a maximum at 48 hr after CCl<sub>4</sub> exposure (Figure 1A). However, there was no difference in plasma ALT and AST activity between mice on ethanol or pair-fed diet after exposure to CCl<sub>4</sub> (Figure 1A and 1B). Further, the 2%(vol/vol) ethanol diet was not sufficient to increase CYP2E1 protein

level compared to pair-fed controls at 72 hr, 2 weeks or 5 weeks (Figure 1C). In addition, there was no difference in the CYP2E1 enzyme activity in liver in response to ethanol or CCl<sub>4</sub> challenge (Figure 1D). Taken together, these data demonstrated that 2%(vol/vol) ethanol intake did not induce CYP2E1, cause direct liver toxicity or increase the hepatic toxicity of CCl<sub>4</sub>.

### Moderate Ethanol Intake Enhanced Activation of HSC in Response to CCl<sub>4</sub>

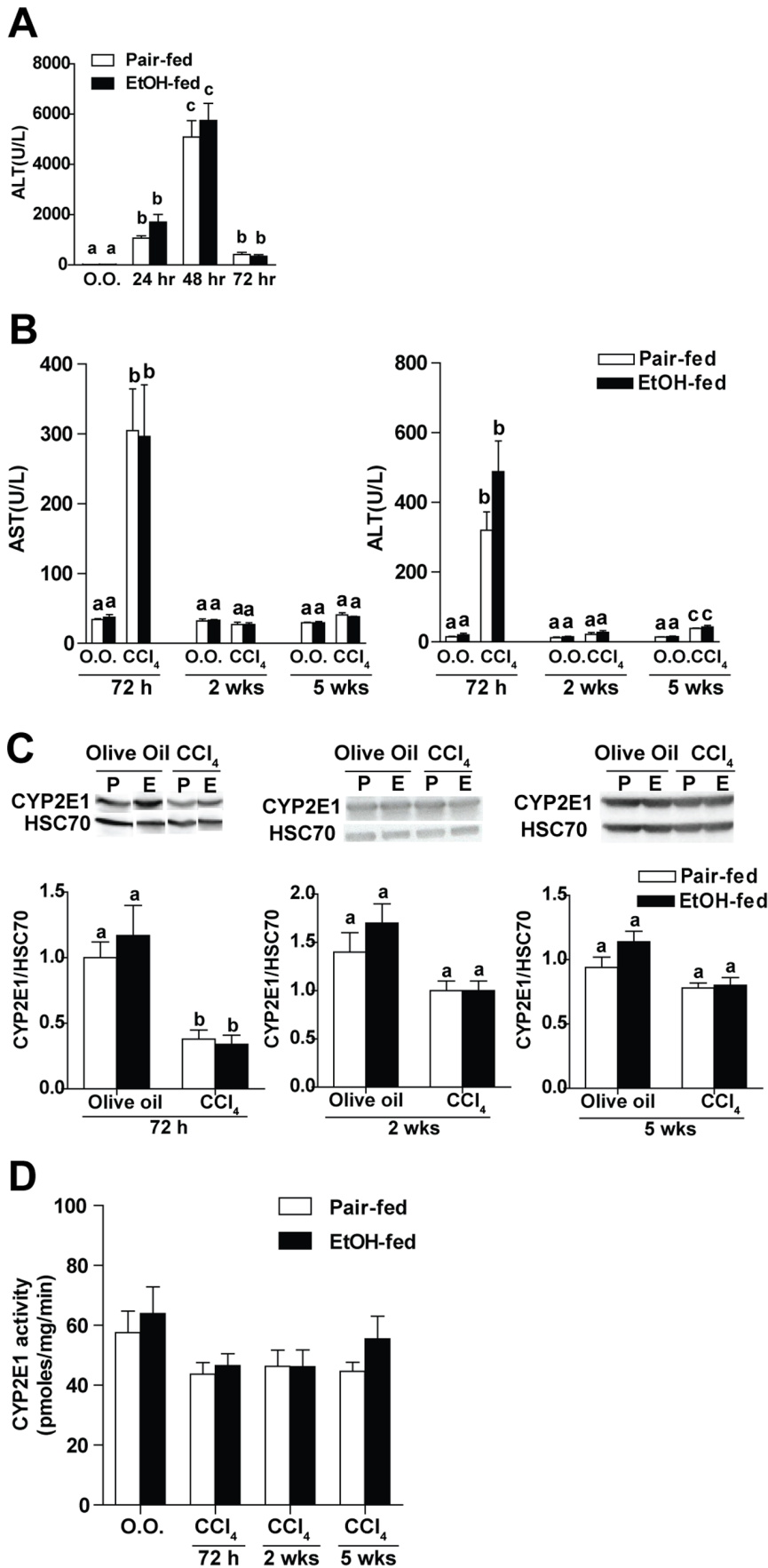
Increased HSC activation in the liver promotes the accumulation of ECM and is essential in the initiation and perpetuation of liver fibrosis. Activated HSC increase expression of mRNA of Col1A1, Col1A2 and  $\alpha$ -SMA. These mRNA are considered intermediate biomarkers for eventual development of fibrosis. Ethanol feeding alone had no effect on the expression of these intermediate biomarkers of HSC activation and fibrosis (Figure 2A). Challenge with CCl<sub>4</sub> increased expression of Col1A1, Col1A2 and  $\alpha$ -SMA mRNA in both pair-fed and ethanol-fed mice compared to olive oil controls (Figure 2A); however, this increase was greater in ethanol-fed mice compared to pair-fed mice (Figure 2A). Consistent with the mRNA data, ethanol (2% (vol/vol)) intake alone did not increase  $\alpha$ -SMA positive HSC in the liver at 2 weeks (Figure 2B) or 5 weeks (Figure 2C). As expected, CCl<sub>4</sub> exposure increased  $\alpha$ -SMA positive HSC in the liver of both pair- and ethanol-fed mice; ethanol-feeding resulted in a four-fold greater increase of  $\alpha$ -SMA staining in the liver sinusoid compared to pair-fed mice at both 2 weeks (Figure 2B) and 5 weeks (Figure 2C) of CCl<sub>4</sub> administration.

### Moderate Ethanol Intake Exacerbated Liver Fibrosis

The accumulation of ECM and resultant change in the architecture of hepatic sinusoid is the hallmark of liver fibrosis. The ethanol (2% (vol/vol)) diet alone did not increase collagen 1 positive staining in the liver compared to mice pair-fed control diet (Figure 3A). CCl<sub>4</sub> increased collagen 1 expression in the liver sinusoid at both 2 weeks and 5 weeks. After both 2 and 5 weeks of CCl<sub>4</sub> exposure, collagen 1 positive staining was increased in ethanol-fed mice compared to pair-fed mice (Figure 3A). Similarly, CCl<sub>4</sub> increased Sirius red staining compared to olive oil controls in both pair- and ethanol-fed mice. While ethanol alone did not increase Sirius red positive staining compared to pair-fed diet (Figure 3B), after CCl<sub>4</sub> exposure, Sirius red staining was enhanced by ethanol feeding compared to pair-fed controls (Figure 3B). Compared to the 2-week time point, ECM deposition in the sinusoidal space is even more prominent by 5 weeks, with progression to bridging fibrosis (Figure 3B).

### A2AR Antagonist Decreased Activated HSC and Liver Fibrosis

To test the hypothesis that A2AR activation contributes to the worsening of liver fibrosis from moderate ethanol consumption, mice were treated with A2AR antagonist KW-6002 in the chronic models. Treatment of A2AR antagonist did not alter the degree of liver injury as measured by plasma AST and ALT levels at 2 week and 5 week time points (Table 1). Treatment with A2AR antagonist had no effect in CCl<sub>4</sub>-mediated increase in  $\alpha$ -SMA in pair-fed mice, but prevented the ethanol-induced increase in  $\alpha$ -SMA staining in ethanol-fed mice after exposure to CCl<sub>4</sub> (Figure 4A, C). KW-6002 also prevented the ethanol-exacerbated ECM deposition, assessed by Sirius red stain at week 2 (Figure 4B, C). To determine if A2AR antagonist may reverse fibrosis, KW-6002 was given daily at the last week of our 5-week model as a therapeutic agent. KW-6002 decreased  $\alpha$ -SMA staining in



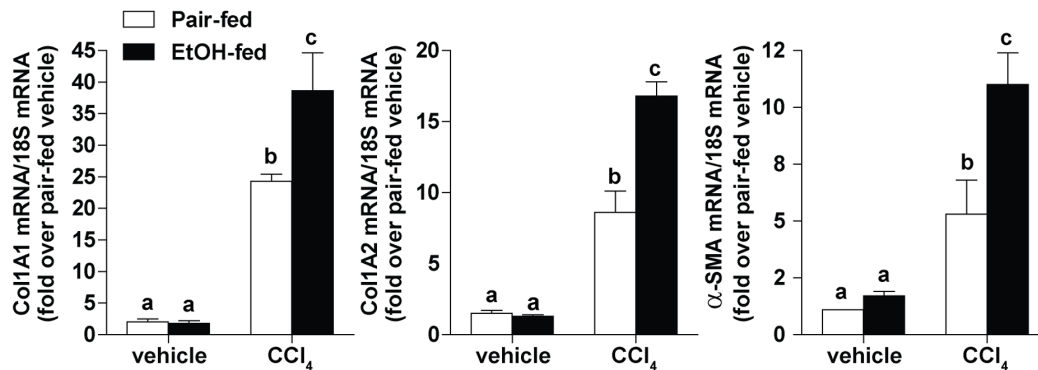
**Figure 1. Effect of moderate ethanol intake on CYP2E1 and CCl<sub>4</sub> hepatotoxicity.** C57BL/6J mice were allowed free access to 2% (vol/vol) (11% calories) ethanol diet or pair-fed control diet and then exposed to intraperitoneal CCl<sub>4</sub> injections over 72 hours, 2 weeks or 5 weeks. **(A)** Plasma ALT was measured in the acute time course to assess hepatic injury. **(B)** Plasma AST and ALT were measured at different time points. **(C)** CYP2E1 protein level in liver was measured by Western blot using whole liver extracts. HSC 70 was used as loading control. Insets show representative image of CYP2E1 Western blots. **(D)** Activity of CYP2E1 in liver was measured by the hydroxylation of *p*-nitrophenol in whole liver extracts. Values represent means  $\pm$  SEM. n=4 in pair-fed diet, n=6 in ethanol-fed diet. Values with different alphabetical superscripts were significantly different from each other, p<0.05.

doi:10.1371/journal.pone.0069114.g001

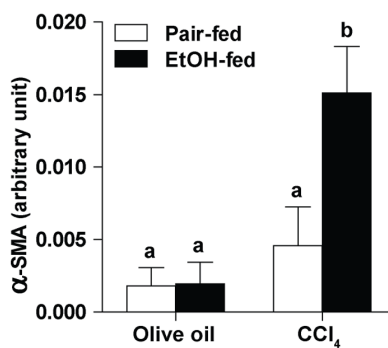
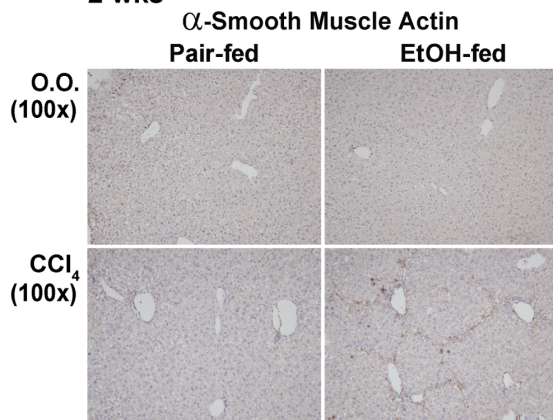
ethanol-fed mice after exposure to CCl<sub>4</sub> (Figure 4A, D) and Sirius red positive ECM deposition in ethanol-fed mice with CCl<sub>4</sub>

exposure, indicating that it was able to reverse fibrosis after it was established (Figure 4B, D). Hydroxyproline concentration in the

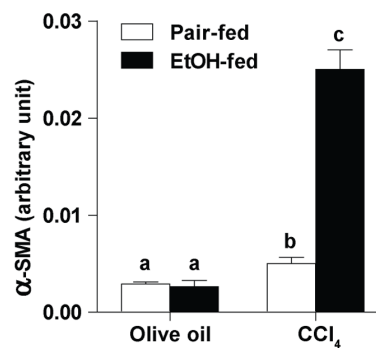
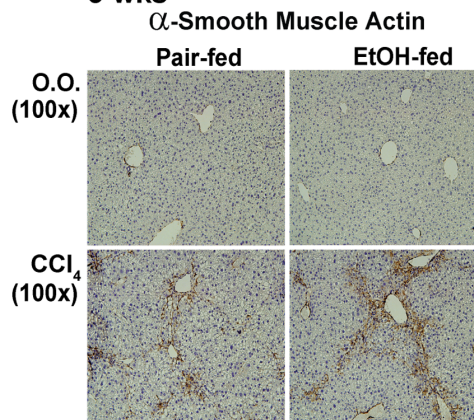
## A 72 hrs



## B 2 wks

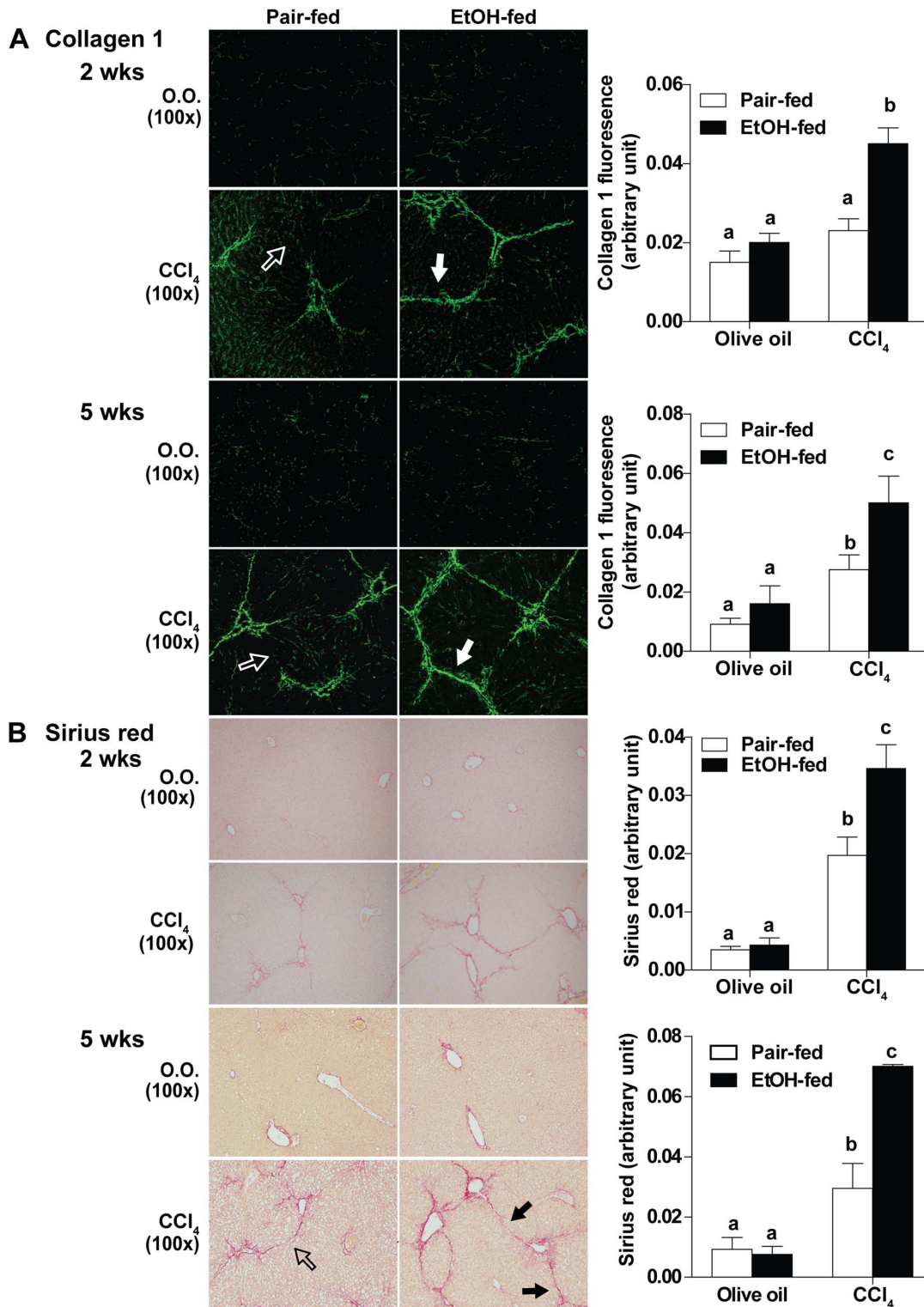


## C 5 wks



**Figure 2. Effect of moderate ethanol intake on HSC activation in response to CCl<sub>4</sub>.** C57BL/6J mice were allowed free access to 2% (vol/vol) ethanol diet or pair-fed control diet and then exposed to intraperitoneal CCl<sub>4</sub> injections over 72 hours, 2 weeks or 5 weeks. **(A)** Hepatic accumulation of Col1A1, Col1A2 and  $\alpha$ -SMA mRNA was used as intermediate biomarkers of HSC activation and fibrosis at 72 hours. **(B, C)** Paraffin-embedded liver sections were de-paraffinized followed by  $\alpha$ -SMA staining at 2 weeks **(B)** and 5 weeks **(C)**. Representative images are shown. Morphometric analysis with Image-Pro-Plus software was used for semi-quantification. Values represent means  $\pm$  SEM. n=4 in pair-fed diet, n=6 in ethanol-fed diet. Values with different alphabetical superscripts were significantly different from each other, p<0.05.

doi:10.1371/journal.pone.0069114.g002



**Figure 3. Progression of fibrosis with moderate ethanol intake and superimposed CCl<sub>4</sub> liver injury.** C57BL/6J mice were allowed free access to 2% (vol/vol) ethanol diet or pair-fed control diet and then exposed to intraperitoneal CCl<sub>4</sub> injections for 2 weeks or 5 weeks. **(A)** Collagen 1 staining was performed on frozen liver sections at 2 weeks and 5 weeks. **(B)** Paraffin-embedded liver sections were de-paraffinized followed by Sirius red staining to assess ECM deposition at 2 weeks and 5 weeks. Representative images are shown. (Solid arrow: immunostaining pattern consistent with bridging fibrosis. Open arrow: immunostaining pattern less than bridging fibrosis.) Morphometric analysis with Image-Pro-Plus software was used for semi-quantification. Value represents mean  $\pm$  SEM. n=4 in pair-fed diet, n=6 in ethanol-fed diet. Values with different alphabetical superscripts were significantly different from each other,  $p < 0.05$ .

doi:10.1371/journal.pone.0069114.g003

liver was also measured to quantify hepatic fibrosis. Moderate ethanol feeding alone did not increase hydroxyproline concentration in the liver compared to pair-fed mice (Figure 4E). CCl<sub>4</sub>-exposure increased hydroxyproline concentration in the liver of both ethanol- and pair-fed mice; however, hydroxyproline was higher in mice exposed to ethanol and CCl<sub>4</sub> compared to pair-fed mice treated with CCl<sub>4</sub>. Treatment with KW-6002 decreased hydroxyproline concentration in ethanol-fed mice after exposure to CCl<sub>4</sub>, but had no effect in pair-fed mice exposed to CCl<sub>4</sub> (Figure 4E). These data demonstrated that A2AR antagonist decreased HSC activation, prevented and reversed liver fibrosis.

### Ethanol Induced Local Hypoxia and Enhanced Sinusoidal Angiogenesis in Response to CCl<sub>4</sub>

Chronic heavy ethanol feeding results in localized hypoxia in the liver [7]. If moderate ethanol also induces hepatic hypoxia, then pimonidazole adduct formation, a measure of tissue hypoxia, should be elevated. Indeed, increased tissue hypoxia was seen in mice exposed to moderate ethanol feeding as measured by the accumulation of pimonidazole adducts (Figure 5A). The expression of ANG1 mRNA, an intermediate marker of hepatic angiogenesis, was measured at different time points after single CCl<sub>4</sub> injection in mice pre-treated with saline or KW-6002. CCl<sub>4</sub> increased ANG1 mRNA level at 4 hours. Treatment of mice with KW-6002 prior to exposure to CCl<sub>4</sub> prevented this increase in ANG1 mRNA level in liver (Figure 5B). On the other hand, treatment of mice with KW-6002 prior to challenge with CCl<sub>4</sub> increased inflammatory cytokine responses, consistent with the anti-inflammatory effects of A2AR activation (Figure 5B). CD31, a cell surface marker for vascular endothelial cells, was used as an indicator of an angiogenic response. Ethanol feeding alone did not increase the CD31 positive staining compared to pair-fed diet. However, enhanced CD31 staining in the liver sinusoid was observed in the mice exposed to 2%(vol/vol) ethanol feeding and CCl<sub>4</sub> compared to pair-fed mice exposed to CCl<sub>4</sub> (Figure 5C). Interestingly, CD31 positive staining in the sinusoid was diminished with KW-6002 administration (Figure 5C). These data demonstrate that ethanol increased sinusoidal angiogenic response upon exposure to CCl<sub>4</sub> and A2AR antagonism prevented the ethanol-induced sinusoidal angiogenic response in liver.

### Discussion

Liver fibrosis is a wound healing response to chronic liver injury. The initiation and maintenance of fibrosis is a dynamic process that is characterized by the accumulation of collagens and ECM [1]. Alcohol intake causes hepatocyte injury, which promotes the subsequent activation of HSC, the major cellular source of collagens and ECM in the liver. Acetaldehyde, a reactive metabolite of ethanol directly regulates gene expression in HSC

and up-regulate collagen production in the liver [28]. In addition, alcohol disrupts the gut barrier function, elevating LPS concentrations in the liver [29]. LPS can further enhance HSC activation through up-regulation of TGF- $\beta$  signaling [28]. Activation of Kupffer cells, the resident macrophage in the liver, also leads to production of profibrotic cytokines and chemokines [30]. In addition to the direct liver toxicity, alcohol may also contribute to the progression of fibrosis through disruption of the wound healing response and activation of HSC. Despite the likely contributions of alcohol to hepatic fibrosis, the effect of subclinical/moderate alcohol consumption in the setting of superimposed liver injury is not well understood. There are conflicting findings regarding the impact of moderate alcohol consumption on the progression of chronic liver diseases, particularly from observational studies in patients with non-alcoholic chronic liver disease [31–33]. Results between these different studies are difficult to compare due to variation in the definition and quantification of alcohol intake, as well as other dietary confounders. Therefore, a well-characterized animal model would be instrumental in clarifying the role of moderate alcohol consumption in chronic liver diseases.

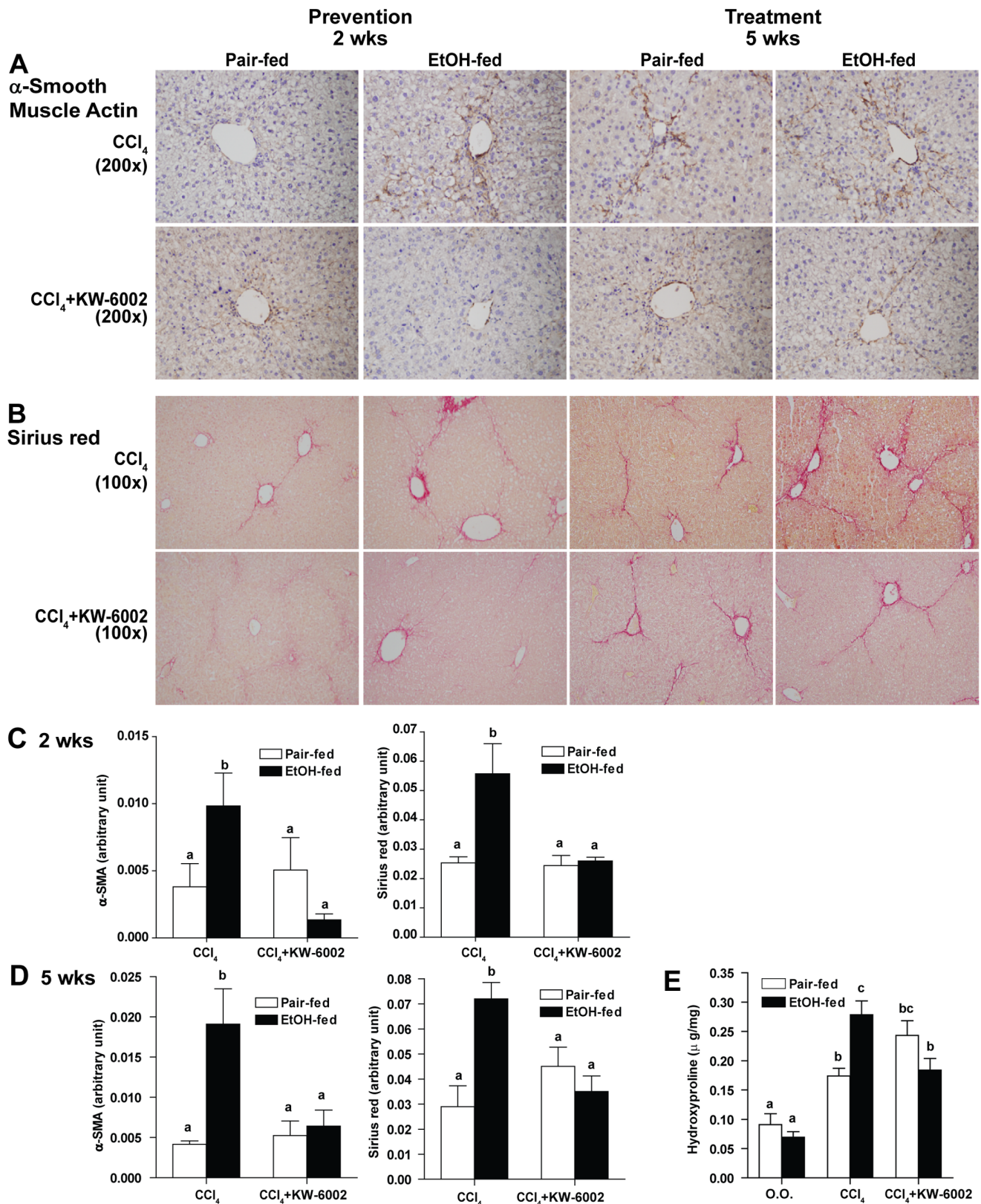
Given the variable clinical presentation and dynamic nature of alcoholic liver disease, it has been difficult to reproduce the complex process in experimental models [34]. Carbon tetrachloride (CCl<sub>4</sub>)-induced injury is one of the most well studied animal models for hepatic fibrosis. While some previous studies have used ethanol feeding along with CCl<sub>4</sub> exposure to study the synergistic effect of ethanol [34], the impact from ethanol is confounded by the induction of CYP2E1 in liver and increased liver toxicity from enhanced CCl<sub>4</sub> metabolism. To address this issue, Gao and colleagues developed a model which titrated the dose of CCl<sub>4</sub> to provide equivalent initial hepatic toxicity, assessed by AST/ALT, in the ethanol-fed and control mice [35]. In our study, we characterized a novel mouse model in which a low concentration of ethanol was selected for feeding, in order to generate a subclinical model of alcohol exposure that did not result in the induction of CYP2E1 or hepatocyte injury. This model therefore eliminates any potential confounding effects of due to differential bioactivation of CCl<sub>4</sub> in ethanol-fed compared to control mice. The comparable bioactivation of CCl<sub>4</sub> in ethanol- and pair-fed mice was reflected in the equivalent initial hepatotoxicity observed in response to challenge with CCl<sub>4</sub>, reflected in the equal rise in ALT and AST in the plasma. Therefore, this model recapitulates the subclinical situation of moderate alcohol consumption. Moderate ethanol intake alone did not increase ECM deposition or induce liver fibrosis; however, upon challenge with a hepatotoxin, moderate ethanol feeding exacerbated liver fibrosis. These data demonstrate a synergistic effect of ethanol and CCl<sub>4</sub> in liver fibrosis and suggested that moderate alcohol intake may exacerbate liver fibrosis in the setting of a superimposed liver injury or stress.

**Table 1.** Effect of A2AR antagonist on liver injury.

	Pair-fed+ CCl <sub>4</sub>				EtOH-fed+ CCl <sub>4</sub>			
	Saline		KW-6002		Saline		KW-6002	
	AST	ALT	AST	ALT	AST	ALT	AST	ALT
2 wk	27.3±3.1	21.9±4.1	31.7±4.1	27.6±6.1	27.2±2.2	27.1±5.0	39.9±4.3	37.6±5.1
5 wk	40.6±3.0	38.4±1.4	42.4±3.7	34.4±3.3	49.1±10.9	42.1±4.9	50±8.3	51±4.7

Plasma AST and ALT levels in pair-fed and ethanol-fed C57BL/6J mice exposed to CCl<sub>4</sub> with KW-6002 or saline control at the 2 week and 5 week time points. Values represent mean  $\pm$  SEM. n = 4 in pair-fed diet, n = 6 in ethanol-fed diet.

doi:10.1371/journal.pone.0069114.t001



**Figure 4. Effect of A2AR antagonist in prevention and treatment of CCl<sub>4</sub>-induced HSC activation and liver fibrosis.** C57BL/6J mice were allowed free access to 2% (vol/vol) ethanol diet or pair-fed control diet and exposed to intraperitoneal CCl<sub>4</sub> injections with KW-6002 for 2 weeks in the prevention model or with KW-6002 in the last week of the 5 weeks treatment model. **(A)**  $\alpha$ -SMA was used as a marker for activated HSC in the 2 week and 5 week models. Representative images are shown. **(B)** ECM deposition was measured by Sirius red staining in the 2 week and 5 week models. Representative images are shown. **(C, D)** Morphometric analysis with Image-Pro-Plus software was used for semi-quantification. Values



represent means  $\pm$  SEM.  $n=4$  in pair-fed diet,  $n=6$  in ethanol-fed diet. Values with different alphabetical superscripts were significantly different from each other,  $p<0.05$ . (E) Hepatic hydroxyproline concentration was measured using a colorimetric assay in liver acid-hydrolysates in the 5 week model. Values represent means  $\pm$  SEM.  $n=3-8$  in each group. Values with different alphabetical superscripts were significantly different from each other,  $p<0.05$ .  
doi:10.1371/journal.pone.0069114.g004

HSC play a key role in the initiation and progression of liver fibrosis and are the major source of ECM [1]. The exacerbation of liver fibrosis observed here was associated with enhanced HSC activation. One possible mechanism for this increased sensitivity of HSC to activation after moderate alcohol feeding is a “priming” of the HSC. Priming of the HSC is likely to occur in response to localized hypoxia in the liver during ethanol metabolism, with a resultant generation of adenosine [12], as well as additional angiogenic and chemotactic mediators [36]. In our study, moderate ethanol intake caused local hypoxia and increased the angiogenic response in the liver. Our data indicated that moderate ethanol exposure and the “priming” from ethanol-induced hypoxia may exacerbate fibrosis response to subsequent CCl<sub>4</sub> exposure. Enhanced angiogenic response and altered angioarchitecture in the liver correlate with the progression of fibrosis in chronic liver diseases [37]. Hypoxia-induced angiogenic cytokines VEGF and ANG-1 also up-regulate the activation and migration of HSC and thus contribute to the initiation and maintenance of fibrosis [38,39]. The consequences of the enhanced angiogenic responses are increased vascular permeability and local circulation, which leads to increased oxygen delivery, recruitment of inflammatory cells and bone marrow derived endothelial cells. The subsequent change in angioarchitecture sustains the progression of fibrosis. It has been reported that the establishment of pathologic angioarchitecture is inversely associated with the reversal of liver fibrosis in humans [37]. Our data indicated that moderate ethanol may enhance the hepatic angiogenic response upon superimposed liver injury and thus exacerbate progression of fibrosis.

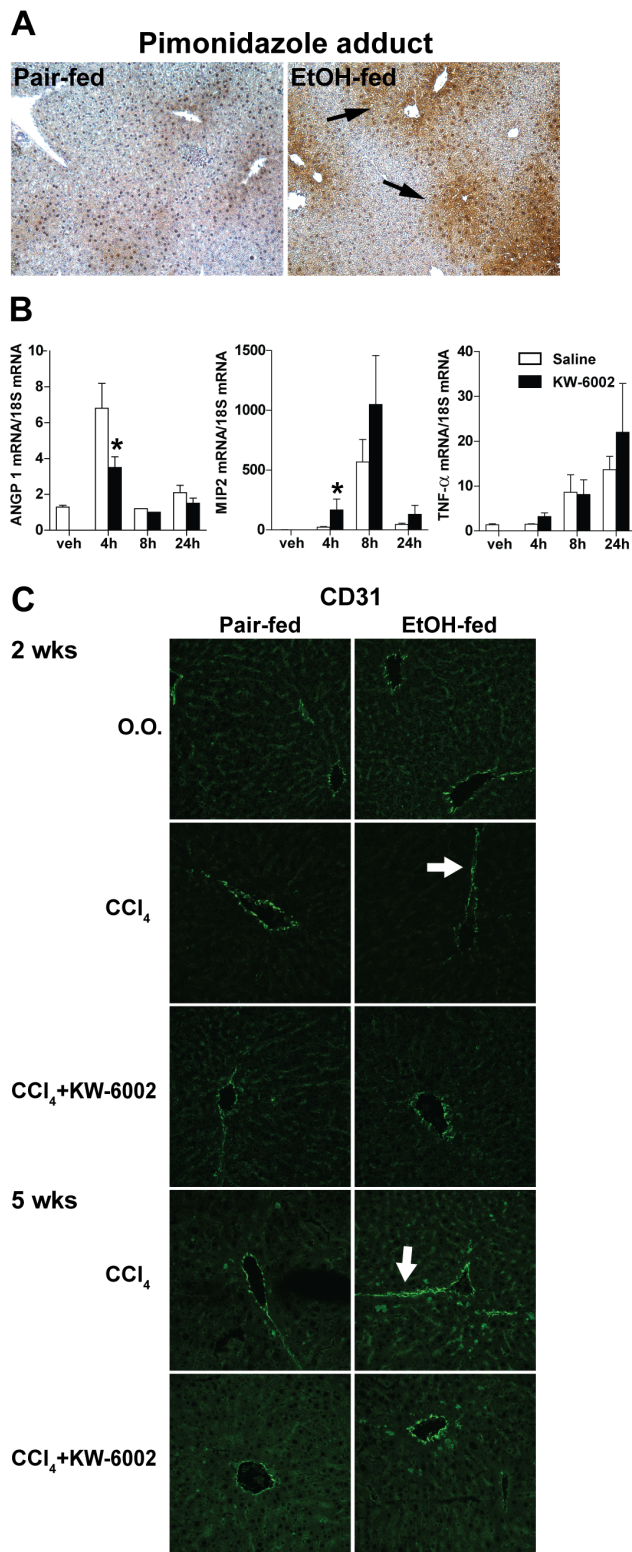
Adenosine is an endogenous regulator of tissue repair in the setting of cell injury and tissue hypoxia. It is produced from the dephosphorylation of adenosine tri-, di-, and monophosphates [40], as well as from the degradation of nucleic acids during cellular injury and apoptosis [41]. The metabolism of ethanol can increase adenosine production via increased ATP hydrolysis during the formation of Acetyl-CoA [42], ethanol metabolism and oxidation [8], inhibiting the uptake of adenosine via the equilibrative nucleoside transporter [9], as well as metabolism of AMP via ecto-5'-nucleotidase (CD73) activity [10]. Adenosine concentrations in the liver are increased in animal models of alcoholic liver injury and both ethanol and CCl<sub>4</sub> exposure increase adenosine release in an *ex vivo* model of liver slices [11]. While it is technically possible to measure adenosine in the circulation, the physiological relevance of these measures is questionable, since the half-life of adenosine in the circulation is on the order of seconds, due to the presence of adenosine metabolizing enzymes, such as adenosine deaminase, in the serum. Therefore, we utilized a specific A2AR antagonist to delineate the role of adenosine in moderate ethanol intake in this study. We demonstrated that A2AR antagonist administration attenuated the HSC activation in the setting of moderate ethanol intake and CCl<sub>4</sub> exposure *in vivo*. Treatment with A2AR antagonist not only prevented the progression of fibrosis in the 2-week model but also reversed the fibrosis after it was established at 5 weeks of CCl<sub>4</sub> exposure. The anti-fibrotic effect of the A2AR antagonist was associated with attenuation of HSC activation and attenuated hepatic angiogenic response. Interestingly, in contrast to previous studies in A2AR<sup>-/-</sup> mice [11], pharmacological A2AR antagonism after fibrosis was

established was not sufficient to completely reverse CCl<sub>4</sub>-induced fibrosis in control mice, but was sufficient to ameliorate the exacerbation of fibrosis by ethanol. These data suggest that the primary mechanism by which moderate ethanol exacerbates fibrosis is via A2AR-mediated mechanisms.

The primary contribution of the A2AR to the exacerbation of fibrosis by ethanol may be due to increases in adenosine itself and/or increases in the expression of adenosine receptors. In addition to an increase in adenosine, ethanol and/or CCl<sub>4</sub> exposure may also increase expression of A2A receptors in the liver. While A2A receptor expression is increased by LPS, TNF $\alpha$  and other agents that stimulate NF $\kappa$ B [42–45], the expression of mRNA for A1, A2A or A2B receptors was not affected by ethanol or CCl<sub>4</sub> exposure (data not shown). Taken together, these data suggest that the contribution of A2A receptors during moderate ethanol feeding was not a result of increased A2AR expression in the liver but rather an increase in A2AR activation through increased adenosine.

Adenosine influences responses in a number of wound healing models, including liver [10], kidney [43], lung [44] and skin [45]. Adenosine inhibits PDGF-induced HSC chemotaxis in a dose-dependent manner. This inhibition is mediated via the A2AR [12]. Adenosine also up-regulates the production of TGF $\beta$  and collagen I mRNA in HSC *in vitro* [12]. Further, activation of A2AR in HSCs increases collagen 1 expression via cAMP/ERK1/2-dependent pathway and collagen 3 expression via p38 MAPK-dependent pathway [46]. In addition, adenosine may stimulate macrophages to produce VEGF [38,47] and promote recruitment of bone-marrow derived endothelial precursor cells [25], thus contributing to angiogenesis and wound healing response in tissue injury. Further, A2AR deficient mice are protected from CCl<sub>4</sub>-induced liver fibrosis and A2AR antagonism, when initiated prior to and maintained during CCl<sub>4</sub> exposure, also reduces hepatic fibrosis [11]. In addition to the anti-fibrotic effect in liver injury, A2A receptor blockade or deletion also diminishes fibrocyte accumulation in the skin in a murine model of scleroderma [45]. On the other hand, administration of A2A receptor agonist prevents kidney fibrosis in a rat model of glomerulonephritis [43] and improves lung function in a model of acute lung injury in rats [44]. The anti-fibrosis effect in the kidney is attributed to the marked decrease in macrophage infiltration and macrophage-linked glomerular damage mediators [43]. In the setting of acute lung injury, the improvement in lung function is a result of increased alveolar fluid clearance via up-regulation of  $\alpha$ -epithelial sodium channel in lung epithelial cells and decreased inflammatory cell infiltration [44]. Therefore, the benefits from A2A receptor activation in these two studies are associated, at least in part, with a decrease in inflammation and injury. Importantly, the difference between the model of inflammation-induced injury and fibrosis in the kidney and CCl<sub>4</sub>-induced liver injury is the role of the inflammatory response. In the CCl<sub>4</sub> model, the primary driver of liver fibrosis is hepatocyte injury and necrosis. Therefore, the contribution of the anti-inflammatory effects of A2AR would likely be less important in CCl<sub>4</sub>-mediated fibrosis, compared to glomerulonephritis in kidney.

Our results suggested that A2AR antagonist not only prevents the progression of fibrosis, but also serves as a therapeutic agent for ethanol-exacerbated liver fibrosis. While the exact mechanism is



**Figure 5. Effect of A2AR antagonist on hepatic angiogenic response and sinusoidal capillarization.** (A) C57BL/6J wild-type (WT) mice were allowed free access to diets with increasing concentrations of 2% (vol/vol) ethanol or pair-fed controls for 4 days. All animals were injected intraperitoneally with pimonidazole (120 mg/Kg, PMD) 1 hour before euthanasia. Paraffin-embedded liver sections were de-paraffinized and stained for PMD-adducts. Representative images are shown. n = 4 in pair-fed diet, n = 6 in ethanol-fed diet. (Solid

black arrow: increased pimonidazole adducts accumulation.) (B) A short time course study using single injection of CCl<sub>4</sub> with pretreatment of KW-6002 or saline in C57BL/6J wild-type (WT) mice. ANG1, TNF- $\alpha$  and MIP2 mRNA in liver was measured after KW-6002 administration as an intermediate marker of angiogenesis and inflammation. (\* indicates statistical significance between KW-6002 and saline control, p<0.05) (C) C57BL/6J mice were allowed free access to 2% (vol/vol) ethanol diet or pair-fed control diet and then exposed to intraperitoneal CCl<sub>4</sub> injections with KW-6002 for 2 weeks in the prevention model or with KW-6002 in the last week of the 5 weeks treatment model. Frozen liver sections were used for CD31 immunofluorescent staining to study sinusoidal capillarization and angiogenic response. (Solid arrow: increased CD31 expression in sinusoidal space.) Representative images are shown. n = 4 in pair-fed diet, n = 6 in ethanol-fed diet. doi:10.1371/journal.pone.0069114.g005

not clear, the beneficial effect of coffee consumption in observational studies of chronic liver diseases [17] may therefore be related to the presence of caffeine in coffee, which acts as an A2AR antagonist. Sustained activation of HSC is required for the maintenance and progression of fibrosis. The anti-fibrotic effect from A2AR antagonist is, at least in part, related to the decreased activation of HSC. In addition, A2AR antagonist may decrease the fibrosis through normalization of angiogenic response. Another mechanism by which A2AR antagonist may attenuate liver fibrosis is through enhancing the anti-fibrotic effect of NK cells [15].

In summary, this study characterized a novel mouse model to study the effect of moderate ethanol intake in liver fibrosis and demonstrated the synergistic effect of moderate ethanol and CCl<sub>4</sub>. This animal model will be useful to further delineate the interaction of moderate alcohol consumption and subclinical liver injury. The ethanol-exacerbated fibrosis was, at least in part, due to a contribution of hypoxia and A2AR activation, evidenced by the ability of an A2AR antagonist to decrease ethanol-induced HSC activation, fibrosis and dysregulated angiogenesis. The study provides a rationale for A2AR antagonist-based therapy in ethanol-induced liver fibrosis.

## Acknowledgments

The authors appreciate the input from Ivan Diamond, MD, PhD and Jeff Zablocki, PhD (Gilead Sciences) regarding KW-6002 pharmacokinetics and the assistance of Manoa Hui in preparing the graph presentation.

## Author Contributions

Conceived and designed the experiments: DJC LEN. Performed the experiments: DJC SR KB MRM SP MTP KN. Analyzed the data: DJC MO LEN. Wrote the paper: DJC LEN.

## References

- Battaller R, Brenner DA (2005) Liver fibrosis. *J Clin Invest* 115: 209–218.
- Lieber CS (2000) ALCOHOL: its metabolism and interaction with nutrients. *Annu Rev Nutr* 20: 395–430.
- Ashley MJ, Olin JS, le Riche WH, Kornaczewski A, Schmidt W, et al. (1977) Morbidity in alcoholics. Evidence for accelerated development of physical disease in women. *Arch Intern Med* 137: 883–887.
- Becker U, Deis A, Sorensen TI, Gronbaek M, Borch-Johnsen K, et al. (1996) Prediction of risk of liver disease by alcohol intake, sex, and age: a prospective population study. *Hepatology* 23: 1025–1029.
- Corrao G, Arico S, Zamboni A, Torchio P, Di Orio F (1997) Female sex and the risk of liver cirrhosis. Collaborative Groups for the Study of Liver Diseases in Italy. *Scand J Gastroenterol* 32: 1174–1180.
- Burnstock G (2007) Purine and pyrimidine receptors. *Cell Mol Life Sci* 64: 1471–1483.
- Arteel GE, Iimuro Y, Yin M, Raleigh JA, Thurman RG (1997) Chronic enteral ethanol treatment causes hypoxia in rat liver tissue in vivo. *Hepatology* 25: 920–926.

8. Nagy LE (1992) Ethanol metabolism and inhibition of nucleoside uptake lead to increased extracellular adenosine in hepatocytes. *Am J Physiol* 262: C1175–1180.
9. Nagy LE, Diamond I, Casso DJ, Franklin C, Gordon AS (1990) Ethanol increases extracellular adenosine by inhibiting adenosine uptake via the nucleoside transporter. *J Biol Chem* 265: 1946–1951.
10. Peng Z, Fernandez P, Wilder T, Yee H, Chiriboga L, et al. (2008) Ecto-5'-nucleotidase (CD73)-mediated extracellular adenosine production plays a critical role in hepatic fibrosis. *Nucleosides Nucleotides Nucleic Acids* 27: 821–824.
11. Chan ES, Montesinos MC, Fernandez P, Desai A, Delano DL, et al. (2006) Adenosine A(2A) receptors play a role in the pathogenesis of hepatic cirrhosis. *Br J Pharmacol* 148: 1144–1155.
12. Hashmi AZ, Hakim W, Kruglov EA, Watanabe A, Watkins W, et al. (2007) Adenosine inhibits cytosolic calcium signals and chemotaxis in hepatic stellate cells. *Am J Physiol Gastrointest Liver Physiol* 292: G395–401.
13. Carimi R, Grazia De Cesaris M, Splendore R, Baldanzi G, Nitri MP, et al. (2004) Role of phosphatidylinositol 3-kinase in the development of hepatocyte preconditioning. *Gastroenterology* 127: 914–923.
14. Montesinos MC, Desai A, Chen JF, Yee H, Schwarzschild MA, et al. (2002) Adenosine promotes wound healing and mediates angiogenesis in response to tissue injury via occupancy of A(2A) receptors. *Am J Pathol* 160: 2009–2018.
15. Raskovalova T, Huang X, Sitkovsky M, Zacharia LC, Jackson EK, et al. (2005) Gs protein-coupled adenosine receptor signaling and lytic function of activated NK cells. *J Immunol* 175: 4383–4391.
16. Ohta A, Sitkovsky M (2001) Role of G-protein-coupled adenosine receptors in downregulation of inflammation and protection from tissue damage. *Nature* 414: 916–920.
17. Higdon JV, Frei B (2006) Coffee and health: a review of recent human research. *Crit Rev Food Sci Nutr* 46: 101–123.
18. Yang M, Soohoo D, Soelaiman S, Kalla R, Zablocki J, et al. (2007) Characterization of the potency, selectivity, and pharmacokinetic profile for six adenosine A2A receptor antagonists. *Naunyn Schmiedeberg Arch Pharmacol* 375: 133–144.
19. Mihara T, Mihara K, Yarimizu J, Mitani Y, Matsuda R, et al. (2007) Pharmacological characterization of a novel, potent adenosine A1 and A2A receptor dual antagonist, 5-[5-amino-3-(4-fluorophenyl)pyrazin-2-yl]-1-isopropylpyridine-2(1H)-one (ASP5854), in models of Parkinson's disease and cognition. *J Pharmacol Exp Ther* 323: 708–719.
20. Wu D, Cederbaum AI (2008) Development and properties of HepG2 cells that constitutively express CYP2E1. *Methods Mol Biol* 447: 137–150.
21. Ding Q, Cai GQ, Hu M, Yang Y, Zheng A, et al. (2013) FAK-related nonkinase is a multifunctional negative regulator of pulmonary fibrosis. *Am J Pathol* 182: 1572–1584.
22. Sisson TH, Mendez M, Choi K, Subbotina N, Courey A, et al. (2010) Targeted injury of type II alveolar epithelial cells induces pulmonary fibrosis. *Am J Respir Crit Care Med* 181: 254–263.
23. Mandal P, Roychowdhury S, Park PH, Pratt BT, Roger T, et al. (2010) Adiponectin and heme oxygenase-1 suppress TLR4/MyD88-independent signaling in rat Kupffer cells and in mice after chronic ethanol exposure. *J Immunol* 185: 4928–4937.
24. McMullen MR, Pritchard MT, Wang Q, Millward CA, Croniger CM, et al. (2005) Early growth response-1 transcription factor is essential for ethanol-induced fatty liver injury in mice. *Gastroenterology* 128: 2066–2076.
25. Montesinos MC, Shaw JP, Yee H, Shamamian P, Cronstein BN (2004) Adenosine A(2A) receptor activation promotes wound neovascularization by stimulating angiogenesis and vasculogenesis. *Am J Pathol* 164: 1887–1892.
26. Roychowdhury S, Chiang DJ, Mandal P, McMullen MR, Liu X, et al. (2012) Inhibition of apoptosis protects mice from ethanol-mediated acceleration of early markers of CCl(4)-induced fibrosis but not steatosis or inflammation. *Alcohol Clin Exp Res* 36: 1139–1147.
27. Hasumura Y, Teschke R, Lieber CS (1974) Increased carbon tetrachloride hepatotoxicity, and its mechanism, after chronic ethanol consumption. *Gastroenterology* 66: 415–422.
28. Brun P, Castagliuolo I, Pinzani M, Palu G, Martinez D (2005) Exposure to bacterial cell wall products triggers an inflammatory phenotype in hepatic stellate cells. *Am J Physiol Gastrointest Liver Physiol* 289: G571–578.
29. Keshavarzian A, Holmes EW, Patel M, Iber F, Fields JZ, et al. (1999) Leaky gut in alcoholic cirrhosis: a possible mechanism for alcohol-induced liver damage. *Am J Gastroenterol* 94: 200–207.
30. Siegmund SV, Brenner DA (2005) Molecular pathogenesis of alcohol-induced hepatic fibrosis. *Alcohol Clin Exp Res* 29: 102S–109S.
31. Cheung O, Sterling RK, Salvatore J, Williams K, Hubbard S, et al. (2011) Mild alcohol consumption is not associated with increased fibrosis in patients with chronic hepatitis C. *J Clin Gastroenterol* 45: 76–82.
32. Ong A, Wong VW, Wong GL, Chan HL (2011) The effect of caffeine and alcohol consumption on liver fibrosis - a study of 1045 Asian hepatitis B patients using transient elastography. *Liver Int* 31: 1047–1053.
33. Zein CO, Unalp A, Colvin R, Liu YC, McCullough AJ, et al. (2011) Smoking and severity of hepatic fibrosis in nonalcoholic fatty liver disease. *J Hepatol* 54: 753–759.
34. Hall P (1995) Factors influencing individual susceptibility to alcoholic liver disease: pathology and pathogenesis. *Alcoholic Liver Disease*, 2nd edition 0: 299–316.
35. Jeong WI, Park O, Gao B (2008) Abrogation of the antifibrotic effects of natural killer cells/interferon-gamma contributes to alcohol acceleration of liver fibrosis. *Gastroenterology* 134: 248–258.
36. Novo E, Cannito S, Zamara E, Valfre di Bonzo L, Caligiuri A, et al. (2007) Proangiogenic cytokines as hypoxia-dependent factors stimulating migration of human hepatic stellate cells. *Am J Pathol* 170: 1942–1953.
37. Fernandez M, Semela D, Bruix J, Colle I, Pinzani M, et al. (2009) Angiogenesis in liver disease. *J Hepatol* 50: 604–620.
38. Pinhal-Enfield G, Ramanathan M, Hasko G, Vogel SN, Salzman AL, et al. (2003) An angiogenic switch in macrophages involving synergy between Toll-like receptors 2, 4, 7, and 9 and adenosine A(2A) receptors. *Am J Pathol* 163: 711–721.
39. Yoshiji H, Kuriyama S, Yoshii J, Ikenaka Y, Noguchi R, et al. (2003) Vascular endothelial growth factor and receptor interaction is a prerequisite for murine hepatic fibrogenesis. *Gut* 52: 1347–1354.
40. Zimmermann H (2000) Extracellular metabolism of ATP and other nucleotides. *Naunyn Schmiedeberg Arch Pharmacol* 362: 299–309.
41. McGaraghty S, Cowart M, Jarvis MF, Berman RF (2005) Anticonvulsant and antinociceptive actions of novel adenosine kinase inhibitors. *Curr Top Med Chem* 5: 43–58.
42. Puig JG, Fox IH (1984) Ethanol-induced activation of adenine nucleotide turnover. Evidence for a role of acetate. *J Clin Invest* 74: 936–941.
43. Garcia GE, Truong LD, Chen JF, Johnson RJ, Feng L (2011) Adenosine A(2A) receptor activation prevents progressive kidney fibrosis in a model of immune-associated chronic inflammation. *Kidney Int* 80: 378–388.
44. Folkesson HG, Kuzenko SR, Lipson DA, Matthay MA, Simmons MA (2012) The adenosine 2A receptor agonist GW328267C improves lung function after acute lung injury in rats. *Am J Physiol Lung Cell Mol Physiol* 303: L259–271.
45. Katebi M, Fernandez P, Chan ES, Cronstein BN (2008) Adenosine A2A receptor blockade or deletion diminishes fibrocyte accumulation in the skin in a murine model of scleroderma, bleomycin-induced fibrosis. *Inflammation* 31: 299–303.
46. Che J, Chan ES, Cronstein BN (2007) Adenosine A2A receptor occupancy stimulates collagen expression by hepatic stellate cells via pathways involving protein kinase A, Src, and extracellular signal-regulated kinases 1/2 signaling cascade or p38 mitogen-activated protein kinase signaling pathway. *Mol Pharmacol* 72: 1626–1636.
47. Leibovich SJ, Chen JF, Pinhal-Enfield G, Belem PC, Elson G, et al. (2002) Synergistic up-regulation of vascular endothelial growth factor expression in murine macrophages by adenosine A(2A) receptor agonists and endotoxin. *Am J Pathol* 160: 2231–2244.