

Research

Open Access

Potential role of interleukin-1 at the peri-ovulation stage in a species of placental viviparous reptile, the three-toed skink, *Chalcides chalcides* (Squamata: Scincidae)

Roberta Romagnoli¹, Chiara Cateni², Fabio M Guarino³, Elisa Bigliardi⁴ and Luana Ricci Paulesu^{*5}

Address: ¹Department of Physiology, University of Siena, 53100 Siena, Italy, ²Department of Physiology, University of Siena, 53100 Siena, Italy, ³Department of Evolutionary and Comparative Biology, University of Naples, 80134 Naples, Italy, ⁴Department of Evolutionary Biology, University of Siena, 53100 Siena, Italy and ⁵Department of Physiology, University of Siena, 53100 Siena, Italy

Email: Roberta Romagnoli - romagnolir@unisi.it; Chiara Cateni - chcate@unisi.it; Fabio M Guarino - fabio.guarino@unina.it; Elisa Bigliardi - bigliardi@unisi.it; Luana Ricci Paulesu* - paulesu@unisi.it

* Corresponding author

Published: 18 September 2003

Received: 25 June 2003

Reproductive Biology and Endocrinology 2003, **1**:60

Accepted: 18 September 2003

This article is available from: <http://www.RBEj.com/content/1/1/60>

© 2003 Romagnoli et al; licensee BioMed Central Ltd. This is an Open Access article: verbatim copying and redistribution of this article are permitted in all media for any purpose, provided this notice is preserved along with the article's original URL.

Abstract

We recently showed that interleukin-1 (IL-1) is secreted by the placenta of a species of squamate reptile, the three-toed skink, *Chalcides chalcides*. In this study, we used immunohistochemical techniques to investigate the expression of IL-1 (in the two isoforms, IL-1 α and IL-1 β) and its specific membrane receptor IL-1Rtl in uterine oviduct during the peri-implantation period. We found that both IL-1 and its receptor were expressed in uterine tissues before and after ovulation (in the pre-ovulatory stage, even before the yolk had formed in the ovary). However, while IL-1 α was mostly localized in the uterine mesenchyme tissue, IL-1 β and IL-1Rtl were present in the uterine epithelium. Our data provide a further comparison between the reproduction of mammals and squamate reptiles.

Background

Placental viviparity is present in mammals (except monotremes) and in numerous species of squamate reptiles and cartilaginous fishes. It involves the apposition of extra-embryonic membranes to the uterus and has different characteristics according to the membranes involved and the intimacy of the fetal and maternal tissues [1].

Despite the diversity of placentation mechanisms, there are functional and morphological similarities among the different types of placenta and the various classes of vertebrates. We recently demonstrated that the Ha58 gene, believed to be essential for placental development in mice, is present in the chorioallantoic placenta of a squamate reptile of the family Scincidae, the three-toed skink

Chalcides chalcides [2]. We also showed that this type of placenta has many aspects in common with the mammalian placenta, like glycosylation of the fetomaternal interface [3] and endocrine secretion [4]. Moreover, immunological activity mediated by the secretion of cytokines has also been demonstrated in the chorioallantoic placenta of squamate reptiles and in the yolk sac placenta of elasmobranch fishes [5,6], suggesting that common mechanisms among different species must have developed during the evolution of placental viviparity.

Since implantation of the blastocyst in the receptive endometrium is a key event in formation of the placenta and the establishment of pregnancy [7], we investigated if cytokines that play a role in mammalian implantation

have a similar function in reptiles. We focused on Interleukin-1 (IL-1) which is expressed by the murine and human endometrium during the peri-implantation period [8] and acts directly on the murine endometrium [9]. Experimental results have shown that implantation in mice is prevented by blockage of the IL-1 receptor type I (IL-1R tI) [10]. Therefore, we analyzed the expression of IL-1 and IL-1R tI in the uterus and oviduct of *Chalcides chalcides* at the peri-ovulation stage.

Materials and methods

Animals

In *Chalcides chalcides*, pregnancy lasts about 3 months, from the beginning of May to the beginning of August [11,12]. Females were captured in a shrubby area in southern Italy (Castel San Vincenzo, Isernia province, 700 m above sea level) from mid-April to mid May, at the following *peri-ovulation* stages: pre-vitellogenic and vitellogenic pre-ovulatory, and immediately post-ovulatory. Four females were examined for each reproductive stage which was determined by the observation of the ovarian morphology under light microscope. The experiments and animal captures were performed with the approval of institutional committees: Italian Ministry of Universities-MURST (auth. no. SCN/2D/2000/9213).

Collection and processing of tissues

Soon after their transport to the laboratory, the animals were killed by deep anaesthesia with diethyl ether. Uterine tissues at the pre-vitellogenic and vitellogenic pre-ovulatory stages, as well as incubatory chambers (uterine portion distended at the site of each ovulated egg) at the post-ovulatory stage, were excised and washed in phosphate buffered saline (PBS). Tissues for immunohistochemistry were fixed in 10% buffered neutral formalin and embedded in paraffin. Sections (5 μ m) were stained with haematoxylin-eosin and processed for immunohistochemistry

Immunohistochemistry

Immunohistochemical staining of formalin-fixed 5 μ m sections was performed using a mouse antiserum recognizing human IL-1 and StreptABComplex/AP (DAKO-Milan, Italy).

After deparaffination in Bioclear (BioOptica – Milan, Italy) and rehydration in serial dilutions of ethanol, the histological sections were washed in Tris buffer saline (TBS) pH 7.6 and pre-incubated with normal swine serum to prevent non-specific binding. The slides were incubated first with anti-human IL-1 α (R&D Systems, Abingdon, UK), IL-1 β [5] and IL-1R tI (R&D Systems) monoclonal antibodies, second with rabbit anti-mouse immunoglobulins (DAKO) diluted 1:500 in TBS, and finally with Streptavidin complex (DAKO) diluted 1:300. Each incubation was performed for 30 min at room temperature

and followed by three washes in TBS. The alkaline phosphatase reaction was revealed using naphthol and new fuchsin as substrate. Endogenous alkaline phosphatase was blocked by adding 1 mM levamisole to the substrate solution. Sections were then washed for 5 min in running tap water and mounted with aqueous mounting medium. Negative controls were performed for each tissue by substituting the primary antibody with the pre-immune serum or TBS. The specificity of the staining reaction for IL-1 α and IL-1 β was confirmed by inhibiting the mAb through incubation (overnight at 4°C) with the specific antigen (at a molar ratio of 1:1) before using it for tissue staining.

Results

The uterine wall of *Chalcides chalcides* consists of several distinct layers: an outer thin serous membrane, a middle myometrium formed by an outer longitudinal and an inner circular smooth muscle layer, and an inner endometrial layer formed by luminal epithelium with cuboidal or low columnar cells and a lamina propria of connective tissue with blood vessels and alveolar glands. During the pre-vitellogenic and vitellogenic phases (Fig. 1), the endometrial layer is organized in folds separated by deep furrows. Immediately after ovulation (Fig. 2), the uterus distends around each developing egg to form an incubatory chamber. The folds decrease in length and in correspondence to the equatorial region of the egg, the folds become larger, adhering to the shell membrane.

Immunoreactivity for IL-1 α , IL-1 β and IL-1R tI is present in all sections of uterine wall at each peri-ovulation stage. Specificity of the staining was revealed by the absence of immunoreactivity in the negative controls at the pre- (Fig. 1A) and post- (Fig. 2A) ovulatory stage.

In the pre-ovulatory stage there is strong immunoreactivity for IL-1 α in the myometrium, the connective tissue and glandular cells of the lamina propria while only a few cells of the luminal epithelium are stained (Fig. 1B). In contrast, there is widespread positivity for IL-1 β in the uterine epithelial cells, whereas only a few cells in the lamina propria are positive (Fig. 1C). Immunoreactivity for IL-1R tI is present in the luminal epithelium, myometrium and in the lamina propria, mainly in the glandular cells (Fig. 1D). No differences in immunoreactivity were observed during the pre-vitellogenic and vitellogenic stages of the pre-ovulatory period.

In the post-ovulatory stage, the immunoreactivity for both IL-1 isoforms and ILR tI shows a similar distribution to that in the pre-ovulatory stage. In fact, while IL-1 α was mostly distributed in the connective tissue of the lamina propria (Fig. 2B), immunoreactivity for IL-1 β and ILR tI was mainly localized in the luminal epithelium (Fig.

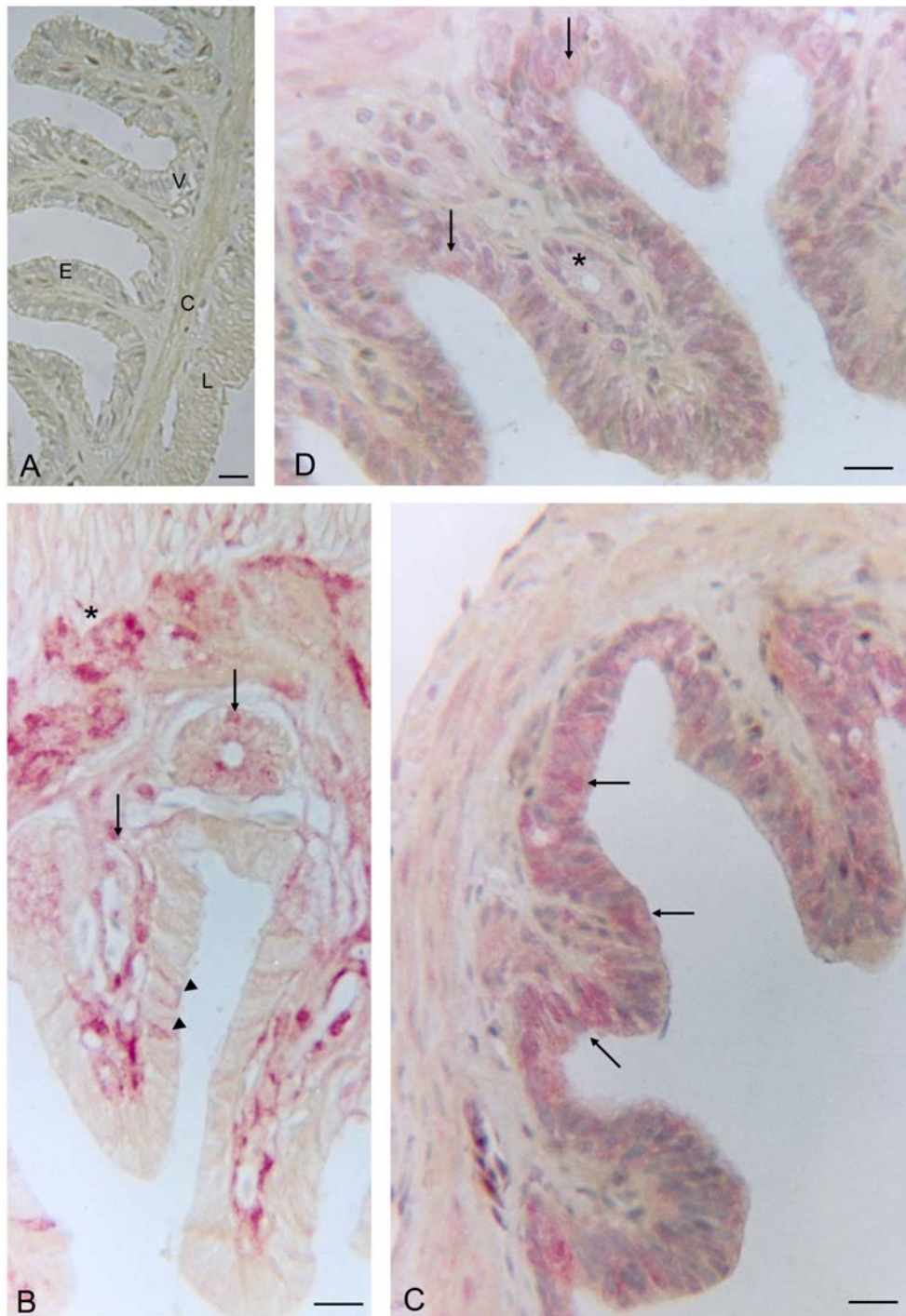


Figure 1

Uterus of *Chalcides chalcides* at the pre-ovulatory vitellogenic stage. **A** (negative control: without primary antibody). The uterine mucosa is thrown up into many long folds. Basal to the luminal epithelium (E) of low columnar cells, a lamina propria with numerous blood vessels (V) and the myometrium with outer longitudinal (L) and inner circular (C) layers are evident. **B** A strong immunoreactivity for IL-1 α in the connective tissue and glandular cells of the lamina propria (arrows), and a weak reaction in the myometrium (*), where only a few epithelial cells are positive (arrowheads). **C** Widespread immunoreactivity for IL-1 β is seen in the luminal epithelium and in the myometrium. **D** Immunoreactivity for IL-1R tl in the luminal epithelium (arrows), myometrium and cytoplasm of glandular cells (*). Bars = 25 μ m.

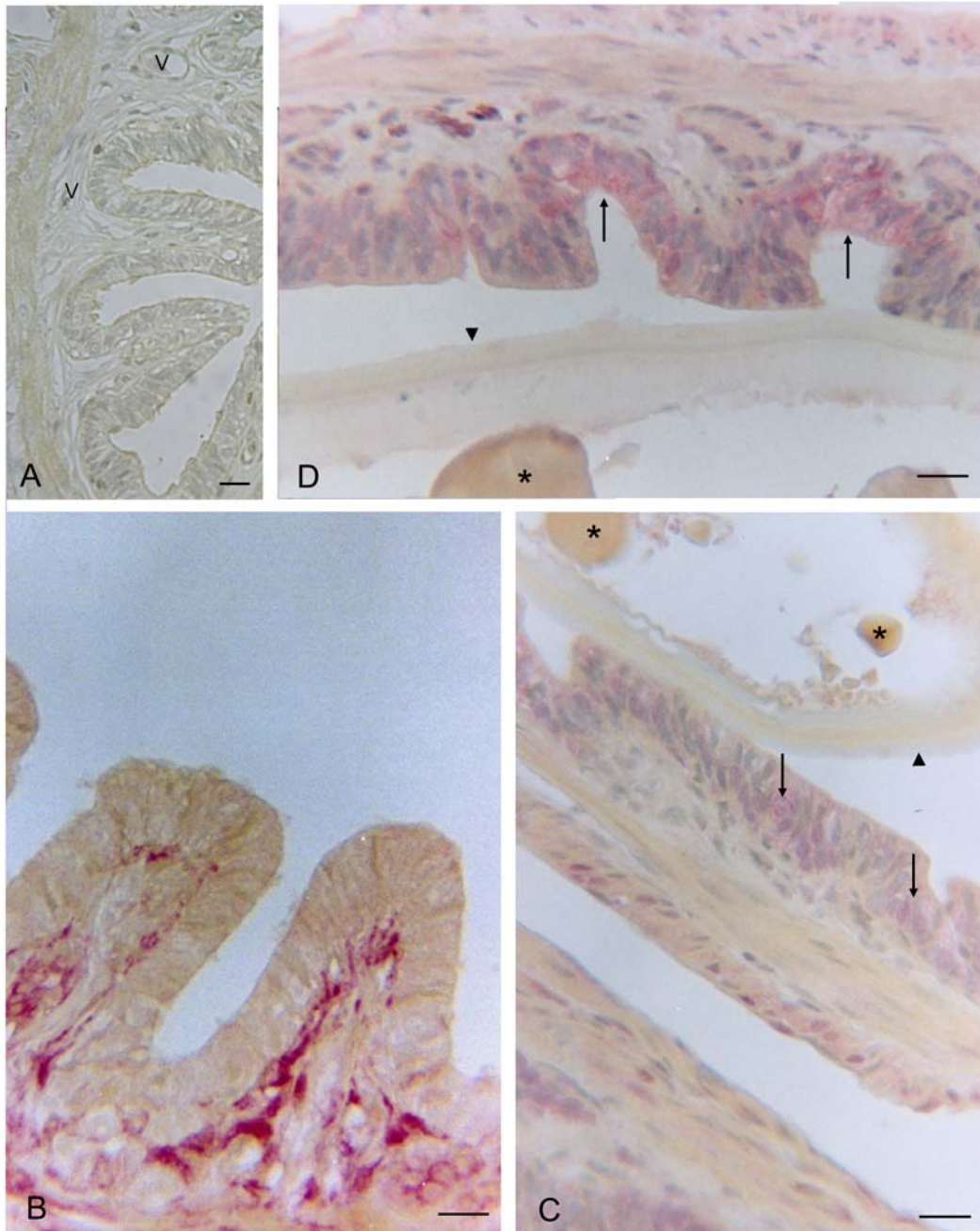


Figure 2

Uterus of *Chalcides chalcides* at the post-ovulatory stage. **A** (negative control: without primary antibody). The endometrial folds are reduced around the developing egg and the myometrium appears distended and thinner; numerous vessels (V) are present in the lamina propria. **B.** Strong immunoreactivity for IL-1 α can be seen in the connective tissue of the lamina propria. **C.** Intense immunoreactivity for IL-1 β is seen in the luminal epithelium (arrows) whereas the egg envelope (arrowhead) and the yolk droplets (*) are negative. **D.** A strong immunoreactivity in IL-R tI: can be seen in the luminal epithelium (arrows) and a weak reaction in the myometrium. The egg envelope (arrowhead) and yolk droplets (*) are negative. Bars = 25 μ m.

2C,2D). In all cases, the egg envelope and the yolk droplets were negative.

Discussion

Acceptance of the semi-allogenic fetus by the maternal tissues has been a big dilemma for scientists throughout the last two decades. Great evidence indicates that the secretion of immunoregulatory peptides, namely cytokines, at the materno-fetal interface plays an important role in preventing the attack and destruction of the fetal tissues by the maternal immune system [13]. Many cytokines and their specific receptors have been found in the mammalian placenta independently of the animal species or its type of placenta [14]. Cytokines are also present in the chorioallantoic placenta of the three-toed skink *Chalcides chalcides* and in the yolk sac placenta of *Mustelus canis* [5,6,15].

The present study demonstrates for the first time that the α and β isoforms of IL-1 and its functional membrane receptor (IL-1R tI) are expressed in uterine tissues at the peri-ovulation stage in the placental squamate reptile, *Chalcides chalcides*. Both, in the pre- and in the post-ovulatory stages, IL-1 α was found mainly in the uterine lamina propria and myometrium, whereas IL-1 β and IL-1R tI were mainly distributed in the luminal epithelium. Moreover, the two IL-1 isoforms and the receptor were expressed in the pre-ovulatory stage, even before the yolk had formed in the ovary.

Our findings suggest a role for IL-1 system throughout the phase preceding implantation and pregnancy.

In *Chalcides chalcides*, implantation occurs in the incubatory chambers, expanded areas of the oviduct that contain the egg and subsequently the embryo. In these areas, the extraembryonic membranes take contact with the uterine epithelium forming placental structures that, although closely interdigitated with the uterine epithelium, never penetrate it [16]. Moreover, as in elasmobranch fishes, the egg shell persists in the placenta of squamate reptiles for most of gestation [17,18]. While it is clear that fetal antigens and maternal uterine tissues are not in intimate contact in the placenta of reptiles, the presence of cytokines, IL-1 and TGF β , in the chorioallantoic placenta of *Chalcides chalcides* suggests that maternal immune response can occur during gestation [15].

The present findings on the expression of IL-1 system in the uterine wall since the pre-ovulatory stage, suggest that the IL-1-mediated response occurs in anticipation of the presence of fetal antigens into the maternal tissues.

The contribution of cytokines to uterine receptivity has been reported in humans [19] and several cytokines and

their specific membrane receptors have a potential biological action during the secretory phase, at the time of blastocyst implantation [20]. In particular, IL-1 and its functional receptor (IL-1R tI) are expressed by human endometrial tissue during the late secretory phase whereas IL-1 R tII, a decoy non-signalling receptor, is down-regulated in the mid-secretory phase, especially during the implantation window [21].

IL-1 cytokine and IL-1 signalling system are evolutionarily conserved. In fact high homology in the sequence of IL-1 β gene has been shown in different animal species including cartilaginous fishes suggesting that IL-1 is part of the immune response since the most primitive classes of vertebrates [22]. Moreover, IL-1 receptors show significant sequence similarities in their cytoplasmic domain to Toll-like receptors that mediate dorsoventral polarity in *Drosophila* and the immune response to microbial products in insects and mammals [23,24].

In lizards, secretion of IL-1 has been reported in splenic phagocytes exposed to temperature changes or sex steroids [25,26]. A reduced daily activity cycle has also been reported in the lizard *Sceloporus occidentalis* after injection of IL-1 β [27].

Our study, while confirming IL-1 as a mediator of the materno-fetal relationships in different species of vertebrates [5,6], indicates IL-1 system as a regulator of uterine receptivity in viviparous placental squamate reptiles. This finding confirms that common immunological mechanisms have evolved in viviparous animals to allow blastocyst implantation and embryonic development in the maternal tissues.

Acknowledgments

This work was supported by research grants from the University of Siena.

References

1. Amoroso EC: **Placentation**. In: *Marshall's Physiology of Reproduction* Edited by: Parkes AS. London: Longmans Green and Co; 1952:127-311.
2. Paulesu L, Cateni C, Romagnoli R, Chellini F, Angelini F, Guarino FM, Rider V, Imakawa K and Bigliardi E: **Evidence of H beta 58, a gene involved in mammalian placental development, in the three-toed skink, *Chalcides chalcides* (Squamata: Scincidae), a viviparous placentotrophic reptile**. *Placenta* 2001, **22**:735-41.
3. Jones CJP, Cateni C and Paulesu LR: **Glycosylation of the materno-foetal interface in the pregnant viviparous placentotrophic lizard *Chalcides chalcides*: a lectin histochemical study**. *Placenta* 2002, **24**:489-500.
4. Guarino FM, Paulesu L, Cardone A, Bellini L, Ghiara G and Angelini F: **Endocrine activity of the corpus luteum and placenta during pregnancy in *Chalcides chalcides* (Reptilia, Squamata)**. *Gen Comp Endocrinol* 1998, **111**:261-70.
5. Paulesu L, Romagnoli R, Marchetti M, Cintorino M, Ghiara P, Guarino FM and Ghiara G: **Cytokines in the viviparous reproduction of squamate reptiles: interleukin-1 alpha (IL-1 alpha) and IL-1 beta in placental structures of a skink**. *Placenta* 1995, **16**:193-205.
6. Cateni C, Paulesu L, Bigliardi E and Hamlett WC: **The interleukin 1 (IL-1) system in the uteroplacental complex of a cartilagi-**

- nous fish, the smoothhound shark, *Mustelus canis*. *Reprod Biol Endocrinol* 2003, **1**:25.
7. Cross JC, Werb Z and Fisher SJ: **Implantation and the placenta: key pieces of the development puzzle.** *Science* 1994, **266**:1508-18.
 8. De M, Sanford TR and Wood GW: **Expression of interleukin I, interleukin 6 and tumour necrosis factor alpha in mouse uterus during the peri-implantation period of pregnancy.** *J Reprod Fertil* 1993, **97**:83-9.
 9. Simon C, Valbuena D, Krussel J, Bernal A, Murphy CR, Shaw T, Pellicer A and Polan ML: **Interleukin-I receptor antagonist prevents embryonic implantation by a direct effect on the endometrial epithelium.** *Fertil Steril* 1998, **70**:896-906.
 10. Simon C, Frances A, Piquette GN, Danasouri IE, Zurawski G, Dang W and Polan ML: **Embryonic implantation in mice is blocked by interleukin-I receptor antagonist.** *Endocrinology* 1994, **134**:521-8.
 11. Giacomini E: **Materiaux pour l'etude developpement de Seps chalcides.** *Archivio Italiano di Biologia* 1891, **16**:332-59.
 12. Angelini F and Ghiara G: **Viviparity in squamates.** In: *Symposium on the evolution of terrestrial vertebrates, Selected Symposia and Monographs U.Z.I Volume 4.* Edited by: Ghiara G. Modena: Mucchi Editore; 1991:305-34.
 13. Saito S: **Cytokine network at the feto-maternal interface.** *J Reprod Immunol* 2000, **47**:87-103.
 14. Paulesu L and Cateni C: **Immunoregulatory peptides in placental viviparity.** In: *Recent Res Devel Peptides* 2002, **1**:107-16.
 15. Paulesu L: **Cytokines in mammalian reproduction and speculation about their possible involvement in nonmammalian viviparity.** *Microsc Res Tech* 1997, **38**:188-94.
 16. Blackburn DG and Callard IP: **Morphogenesis of placental membranes in the viviparous, placentotrophic lizard *Chalcides chalcides* (Squamata: Scincidae).** *J Morph* 1997, **232**:35-55.
 17. Blackburn DG: **Histology of the late-stage placenta in the matrotrophic skink *Chalcides chalcides* (Lacertilia; Scincidae).** *J Morph* 1993, **216**:179-95.
 18. Hamlett WC, Wourms JP and Hudson JS: **Ultrastructure of the full term shark yolk sac placenta. I. Morphology and cellular transport at the fetal attachment site.** *J Ultrastructure Res* 1985, **91**:192-206.
 19. Lessey BA: **The role of the endometrium during embryo implantation.** *Hum Reprod* 2000, **15**:39-50.
 20. Lindhart CA, Bentin-Ley U, Ravn V, Islin H, Hviid T, Rex S, Bangsbo S and Sorensen S: **Biochemical evaluation of endometrial function at the time of implantation.** *Fertil Steril* 2002, **78**:221-233.
 21. Boucher A, Kharfi A, Al-Akoum M, Bossù P and Akoum A: **Cycle-dependent expression of interleukin-I receptor type II in the human endometrium.** *Biol Reprod* 2001, **65**:890-898.
 22. Bird S, Wang T, Zou J, Cunningham C and Secombes CJ: **The first cytokine sequence within cartilaginous fish: IL-I beta in the small spotted catshark (*Scyliorhinus canicula*).** *J Immunol* 2002, **168**:3329-3340.
 23. O'Neill LAJ and Greene C: **Signal transduction pathways activated by the IL-I receptor family: ancient signaling machinery in mammals, insects, and plants.** *J Leukoc Biol* 1998, **63**:650-7.
 24. Akira S, Takeda K and Kaisho T: **Toll-like receptors: critical proteins linking innate and acquired immunity.** *Nat Immunol* 2001, **2**:675-80.
 25. Mondal S and Rai U: **In vitro effect of temperature on phagocytic and cytotoxic activities of splenic phagocytes of the wall lizard, *Hemidactylus flaviviridis*.** *Comp Biochem Physiol A Mol Integr Physiol* 2001, **129**:391-8.
 26. Mondal S and Rai U: **In vitro effect of sex steroids on cytotoxic activities of splenic phagocytes of the wall lizard, *Hemidactylus flaviviridis*.** *Gen Comp Endocrinol* 2002, **125**:264-71.
 27. Dunlap KD and Church DR: **Interleukin-I beta reduces daily activity level in male lizards, *Sceloporus occidentalis*.** *Brain Behav Immun* 1996, **10**:68-73.

Publish with **BioMed Central** and every scientist can read your work free of charge

"BioMed Central will be the most significant development for disseminating the results of biomedical research in our lifetime."

Sir Paul Nurse, Cancer Research UK

Your research papers will be:

- available free of charge to the entire biomedical community
- peer reviewed and published immediately upon acceptance
- cited in PubMed and archived on PubMed Central
- yours — you keep the copyright

Submit your manuscript here:
http://www.biomedcentral.com/info/publishing_adv.asp

