

Evolutionary divergence of chloroplast FAD synthetase proteins

Yruela *et al.*

RESEARCH ARTICLE

Open Access

Evolutionary divergence of chloroplast FAD synthetase proteins

Inmaculada Yruela^{1,2*}, Sonia Arilla-Luna^{2,3}, Milagros Medina^{2,3}, Bruno Contreras-Moreira^{1,2,4}

Abstract

Background: Flavin adenine dinucleotide synthetases (FADSs) - a group of bifunctional enzymes that carry out the dual functions of riboflavin phosphorylation to produce flavin mononucleotide (FMN) and its subsequent adenylation to generate FAD in most prokaryotes - were studied in plants in terms of sequence, structure and evolutionary history.

Results: Using a variety of bioinformatics methods we have found that FADS enzymes localized to the chloroplasts, which we term as plant-like FADS proteins, are distributed across a variety of green plant lineages and constitute a divergent protein family clearly of cyanobacterial origin. The C-terminal module of these enzymes does not contain the typical riboflavin kinase active site sequence, while the N-terminal module is broadly conserved. These results agree with a previous work reported by Sandoval *et al.* in 2008. Furthermore, our observations and preliminary experimental results indicate that the C-terminus of plant-like FADS proteins may contain a catalytic activity, but different to that of their prokaryotic counterparts. In fact, homology models predict that plant-specific conserved residues constitute a distinct active site in the C-terminus.

Conclusions: A structure-based sequence alignment and an in-depth evolutionary survey of FADS proteins, thought to be crucial in plant metabolism, are reported, which will be essential for the correct annotation of plant genomes and further structural and functional studies. This work is a contribution to our understanding of the evolutionary history of plant-like FADS enzymes, which constitute a new family of FADS proteins whose C-terminal module might be involved in a distinct catalytic activity.

Background

Flavin mononucleotide (FMN) and flavin adenine dinucleotide (FAD) are essential cofactors for numerous enzymes (*i.e.*, dehydrogenases, oxidases, reductases) that participate in one- and two-electron oxidation-reduction processes critical to the major metabolic routes in all living organisms [1-4]. Riboflavin (RF), the precursor of FMN and FAD can be *de novo* synthesized by plants, fungi and many bacteria, but in mammals the only known RF source is the exogenous riboflavin (vitamin B₂) obtained through the diet [5-7].

In most prokaryotes, the synthesis of FMN and FAD is catalyzed from RF and ATP by a single bifunctional enzyme, usually known as FAD-synthetase (FADS), through the sequential action of its two enzymatic

activities: an ATP:riboflavin kinase (RFK, EC 2.7.1.26) that transforms RF and ATP into FMN, and an ATP:FMN adenylyltransferase (FMNAT, 2.7.7.2) that catalyzes the subsequent adenylylation of FMN to FAD. Thus, FADS is a bifunctional RFK/FMNAT enzyme [8]. FADSs are typically 310-340 residues in length and are folded in two modules [9-11], each one mainly involved in one of the activities. The RFK reaction has been related with the C-terminal module (RFK-module), while the N-terminal module is mainly related to the FMNAT activity (FMNAT-module); hence, two independent substrate binding and catalytic sites are in charge of each activity [11,12]. In one hand, the RFK-module (~ 180 aa) folds in a globular domain and its overall topology is similar to that found in the RFKs from *Homo sapiens* (HsRFK) and *Schizosaccharomyces pombe* (SpRFK), with differences only observed in the loops connecting secondary structure elements [13,14]. Furthermore, the substrate binding motifs PTAN and

* Correspondence: yruela@eead.csic.es

¹Estación Experimental de Aula Dei, Consejo Superior de Investigaciones Científicas (CSIC), Avda. Montañana, 1005, 50059 Zaragoza, Spain
Full list of author information is available at the end of the article

GxY of the RFK-module are conserved among FADSS and eukaryotic RFKs. In the other hand, the FMNAT-module consists of an α/β dinucleotide binding domain with a typical Rossmann fold topology (~ 150 aa) [9-11]. Moreover, it seems to be remotely similar to the nucleotidyltransferase (NT) superfamily and contains the typical (H/T)xGH and xSST/SxxR motifs involved in binding nucleotide and phosphate groups. Interestingly, monofunctional enzymes with only RFK activity have been described in *Bacillus subtilis* [15] and *Streptococcus agalactiae* [16] but no monofunctional FMNAT enzymes have been reported in prokaryotes.

A different scenario is found in eukaryotes, where both activities are generally split in two different enzymes with either RFK or FMNAT activity [17-20]. As mentioned above, the RFK enzymes show sequence and structure similarity to the RFK-module of prokaryotic FADS [13,14]. However, eukaryotic FMNATs share little or no sequence similarity to the FMNAT-module of FADS, as these enzymes belong to two different protein superfamilies, which are thought to require different sets of active-site residues to carry out the same chemistry [21-23]. The eukaryotic FMNAT-module is currently classified as a member of the 3'-phosphoadenosine 5'-phosphosulfate (PAPS) reductase-like family belonging to the "adenosine nucleotide α -hydrolase-like" superfamily, which has motifs different from those of NTs.

In plants only a few efforts have been devoted to this system. Early studies characterized apparently monofunctional enzymes with either RFK or FMNAT activities in several plant species [24-27]. In those studies the subcellular localization of RFK and FADS was not addressed although it is known that plants use flavin nucleotides in mitochondria, plastids and in the cytosol. In an earlier work RFK activity was associated to the cytosol and to an organellar fraction containing chloroplasts and mitochondria [28]. More recently, a bifunctional enzyme with both FMN hydrolase and RFK activities has been described in *Arabidopsis thaliana* (*AtFH*y/RFK) [29], whose N-terminal module responsible for the FMN hydrolase activity, shares sequence similarity with members of the haloacid dehalogenase (HAD) superfamily. *AtFH*y/RFK enzyme was predicted to be cytosolic [29]. Additionally, two more enzymes with FMNAT activity have been identified, cloned and characterized in the same species [30]. These *AtRib*F1 and *AtRib*F2 enzymes, herein plant-like FADS proteins, have an N-terminal module which is found to be homologous to the FMNAT-module of FADS, but instead its C-terminal module does not catalyze RF phosphorylation. *AtRib*F1 and *AtRib*F2 were localized to the chloroplast [30]. In mitochondria, the catalytic conversion of RF into FMN and FAD has been reported, due to the existence of mitochondrial RFK and FADS enzymes

[31], but nevertheless FADS activity was much lower than in chloroplasts. These results agree with the cited confocal microscopy studies [30], but the hypothesis for the localization of FADS isoforms (*AtRib*F1 and *AtRib*F2) in mitochondria cannot be ruled out on the basis of bioinformatics (TAIR) analysis [31]. The mitochondrial FAD-forming enzymes reside in two distinct monofunctional enzymes, which can be separated in soluble and membrane-enriched fractions. It is worth mentioning that the genes encoding organellar RFK activity remains unidentified.

In order to investigate RFK and FMNAT activities in plants we have conducted an extensive bioinformatics survey using the available genomes in public databases. Here we report the identification of a conserved C-terminal module in plant FADS enzymes, which does not contain the typical RFK active site sequence, suggesting that it belongs to a new family of FADS proteins. The activity of this module is discussed.

Results and Discussion

Sequence and evolutionary analysis

As shown in Table 1, most prokaryotic genomes (1178/1194) surveyed in this study, including cyanobacteria, contain a single gene encoding for a bifunctional FADS enzyme, hereafter identified as FADS-type I protein. Sequence searches in a variety of repositories of green plant sequences allowed us to identify a related group of

Table 1 Bacterial genomes containing FADS-like proteins⁽¹⁾

Type of protein	Genomes	N
FMNAT RFK	<i>Chthoniobacter flavus</i> Ellin428 ctg76 <i>Mesoplasma florum</i> L1 <i>Mycoplasma capricolum</i> subsp. <i>capricolum</i> <i>Mycoplasma mycoides</i> subsp. <i>capricolum</i>	4
FADS-type I	Most bacterial genomes	1171
FADS-type I FMNAT	<i>Bacillus cereus</i> 03BB102, <i>Bacillus cereus</i> ATCC 10987 <i>Bacillus turingiensis</i> str. <i>AlHakam</i> <i>Geobacillus thermodenitrificans</i> NG80-2 <i>Listeria monocytogenes</i> EGD-e	5
FADS-type I RFK	<i>Bacillus subtilis</i> subsp. <i>subtilis</i> <i>Haemophilus influenzae</i> 86-028NP	2
FADS-type I FADS-type II	<i>Arthrobacter chlorophenolicus</i> A6 <i>Bacillus cereus</i> subsp. <i>cytotoxis</i> NVH 391-98 <i>Lactobacillus plantarum</i> JDM1 <i>Lactobacillus plantarum</i> WCFS1 <i>Listeria monocytogenes</i> HCC23 <i>Listeria welshimeri</i> serovar <i>Oceanobacillus ihayensis</i> HTE831 <i>Treponema denticola</i> ATCC 35405	8
FADS-type II	<i>Eubacterium saphenum</i> ATCC 49989 <i>Mycoplasma conjunctivae</i> <i>Treponema pallidum</i> subsp. <i>pallidum</i> str. <i>Nichols</i>	3
FADS-type II RFK	<i>Alistipes putredinis</i> DSM 17216	1

¹ Check details in section "Sequence analysis" of Methods.

genes, which contain two domains with high similarity (see Methods section) to FADS-type I sequences (Figure 1 and 2), and are also present in a single copy in most cases with currently available complete genome (14/18). This result agrees with previous work by Sandoval *et al.* [30]. The N-terminal module of these proteins displays high similarity to the FMNAT-module of prokaryotic FADS-type I, showing the typical motifs HxGH and xSST/SxxR involved in FMNAT activity, also common to other NTs. However, several observations can be made with respect to the C-terminal module in plant proteins: *i*) its length is 40 to 60 residues shorter; *ii*) the PTAN motif characteristic of the RFK activity mutates to PxS; *iii*) a LNxxPP motif is found conserved in plants, next to the invariant GxY motif. *AtRibF1* and *AtRibF2* belong to this group of proteins and were recently characterized by Sandoval *et al.* [30], who did not detect any RFK activity in these enzymes. This experimental observation, together with the absence of the PTAN motif suggests a different enzymatic activity for this module. Therefore we named these proteins as plant-like FADS.

Furthermore, a few bacterial parasites and pathogens isolated from plant, human or soil material and belonging to phyla *Firmicutes*, *Actinobacteria*, *Tenericutes* and *Spirochaetes* contain extra sequences with significant similarity to FADS-type I (E-values $\leq 1.5 \times 10^{-10}$). However, as shown in Figure 1 and 2, these sequences do not conserve the catalytic PTAN motifs, and have shorter C-terminal modules similar in length to plant like-FADS, suggesting that they might constitute another divergent type of FADS, which we label as FADS-type II (see Table 1).

In our sequence searches, plant-like FADS proteins are distributed across a variety of green plant lineages. Among land plants we found 84 matches (62 in Eudicots, 11 in Monocots, 6 in Coniferophyta, 3 in Magnoliids, 1 in Bryophyta, 1 in Lycopodiophyta). Other than land plants, plant-like FADS proteins were restricted to unicellular photosynthetic organisms belonging to phylum *Chlorophyta* (*Micromonas pusilla*, *Chlamydomonas reinhardtii*, *Coccomyxa* sp. and *Ostreococcus lucimarinus*) (see Table 2). All plant genomes surveyed encode these proteins in the nuclear genome (sequence searches in chloroplast genomes did not produce matches). Our search strategies did not find plant-like FADS proteins in any other eukaryotic genomes. These observations might imply that these genes have a prokaryotic origin, somewhat related to the endosymbiotic origin of chloroplasts. On the other hand, all green plant genomes explored have a copy of the cytosolic bifunctional FHy/RFK protein except two *Micromonas* species that have a monofunctional RFK enzyme like in most eukaryotes. Proteins related to the HAD domain of FHy/RFK have been found in either bacteria or eukaryotes but this

enzyme has been suggested to be unique in plant lineages probably being originated by fusion of a HAD to an eukaryotic-type RFK [29].

With the aim of further exploring the origin of plant-like FADS proteins, we carried out a phylogenetic analysis, which is summarized in the phylogram in Figure 3. According to this tree, which was rooted by taking the sequence of the cytosolic protein *AtFHy/RFK* from *Arabidopsis thaliana* as an outgroup, plant-like FADS proteins are closer to the group of cyanobacteria than any other bacterial species, which were selected to represent taxa included in Table 1. Indeed proteins from both cyanobacteria and green plants are enclosed in a clade with an associated approximate likelihood ratio (aLRT) of 0.80. These observations suggest that plant-like FADS proteins have a prokaryotic origin closely related with cyanobacteria, although shaping a divergent group of sequences, as illustrated in Figure 3. Note that *AtFHy/RFK* clusters apart from prokaryotic FADS, confirming a different origin for this enzyme. The tree also suggests that plant-like FADS proteins diverged from bacterial FADS probably before the separation of the two major plant phyla (*Streptophyta* -plants and their closest green algal relatives- and *Chlorophyta* -the rest of green algae-), since they are present in species from both. In order to further investigate this, we searched for putative plant-like FADS homologues in *Mesostigma viride*, proposed to be the earliest plant lineage and anterior to the divergence of the *Streptophyta* and *Chlorophyta* [32]. Unfortunately, the nuclear genome of this species is not available and the chloroplast and mitochondrial genomes yielded no sequence matches. Our findings could indicate that plant-like FADS indeed derived from cyanobacterial FADS, despite the fact that they are now encoded in the nuclear genome [33].

Moreover, these results reveal that most bacteria containing FADS-type II sequences have also typical FADS-type I proteins (see Table 1) and the tree in Figure 3 shows that these two types of sequences cluster together, implying that they might actually be paralogous genes. Only the genomes of *Eubacterium saphenum* ATCC 49989, *Mycoplasma conjunctivae*, *Treponema pallidum* *subsp. Pallidum* contain exclusively FADS-type II proteins. Although the tree does not support that FADS-type II proteins constitute a distinct evolutionary class, their shorter and non-conserved C-terminal domains still clusters them clearly as a distinct functional group, which might have lost the C-terminal activity typical of FADS-type I proteins.

We also note the observed variability in terms of RFK and FMNAT enzymatic activities in bacterial genomes. While most prokaryotes have a single copy of a typical FADS-type I sequence, in 4 species both enzymatic activities are separated in monofunctional proteins,

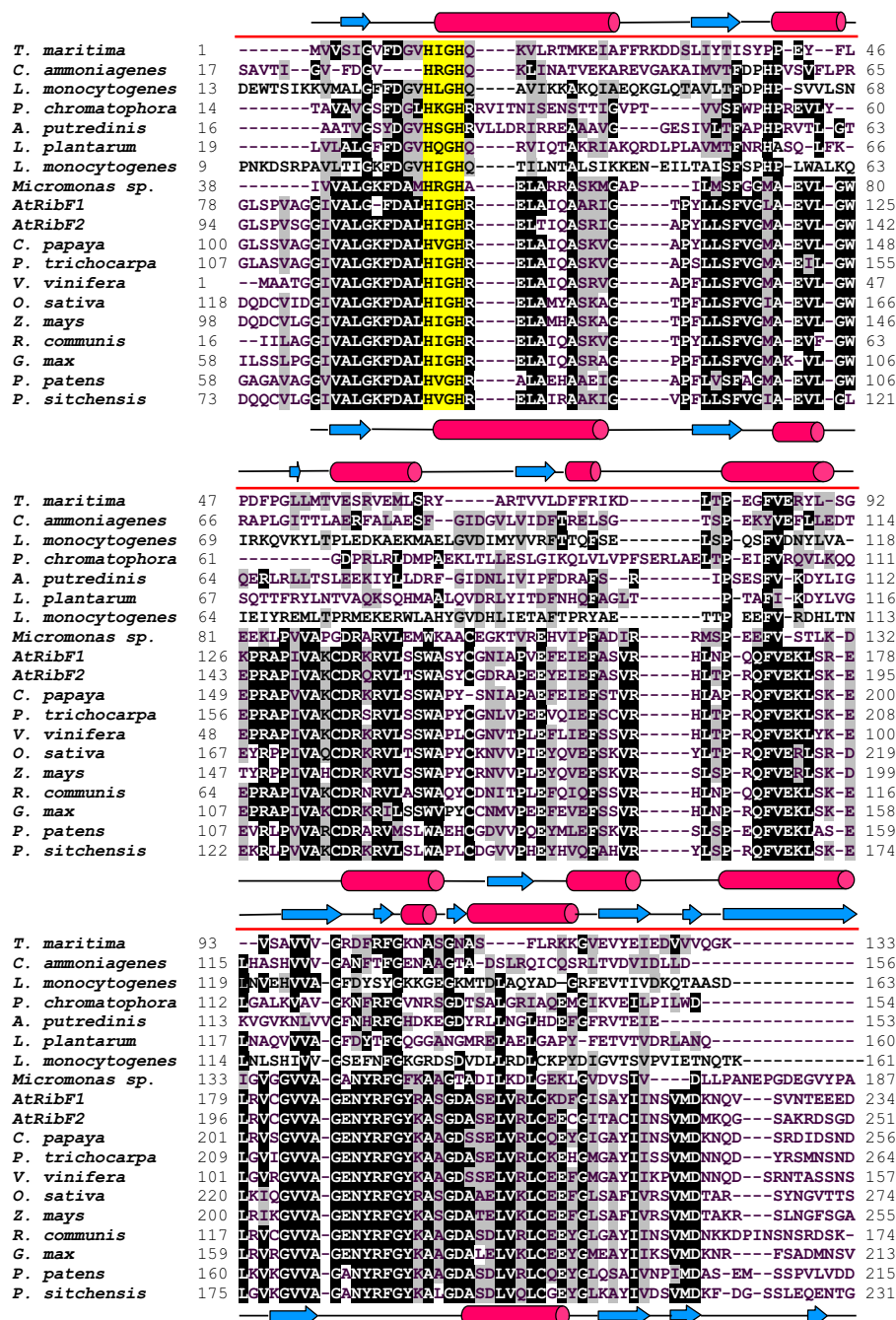


Figure 1 Alignment of a selection of FADS protein sequences used in this study (part 1 of 2). The alignment includes bifunctional FADS-type I proteins from *Thermotoga maritima* (Q9WZW1), *Corynebacterium ammoniagenes* (Q59263), *Listeria monocytogenes* HCC23 (YP_002350202) and *Paulinella chromatophora* (YP_002048796.1), FADS-type II proteins from *Alistipes putredinis* DSM 17216 (ZP_02425815.1), *Lactobacillus plantarum* JDM1 (YP_003062293.1) and *Listeria monocytogenes* HCC23 (YP_002350850), and plant-like FADS from *Micromonas* sp. RCC299 (XP_002501784), *Arabidopsis thaliana* L., AtRibF1 (At5g23330) and AtRibF2 (At5g08340), *Carica papaya* (Cp00060g00820), *Populus trichocarpa* (Pt07g06690, EEE90505.1), *Vitis vinifera* L. (Vv00g06080, XP_002273393.1), *Oryza sativa* L. (Os03g58710, NP_001051594), *Zea mays* L. (NP_001151161.1), *Ricinus communis* L. (XP_002517319.1), *Glycine max* (EST assembly from Soybean Genome Project, DoE Joint Genome Institute), *Physcomitrella patens* L. (Pp00229g00440, A9TH63) and *Picea sitchensis* L. (ABR16575.1). N-terminus (red) and C-terminus (green) within FADS proteins are marked over the sequences. Secondary structure of *TmFADS* (pdb 1mrz) is shown in the upper line. Predicted secondary structure of AtRibF1 is shown in the bottom line. Conserved amino acids are shown in black. Catalytic motifs in FADS enzymes are highlighted in yellow.

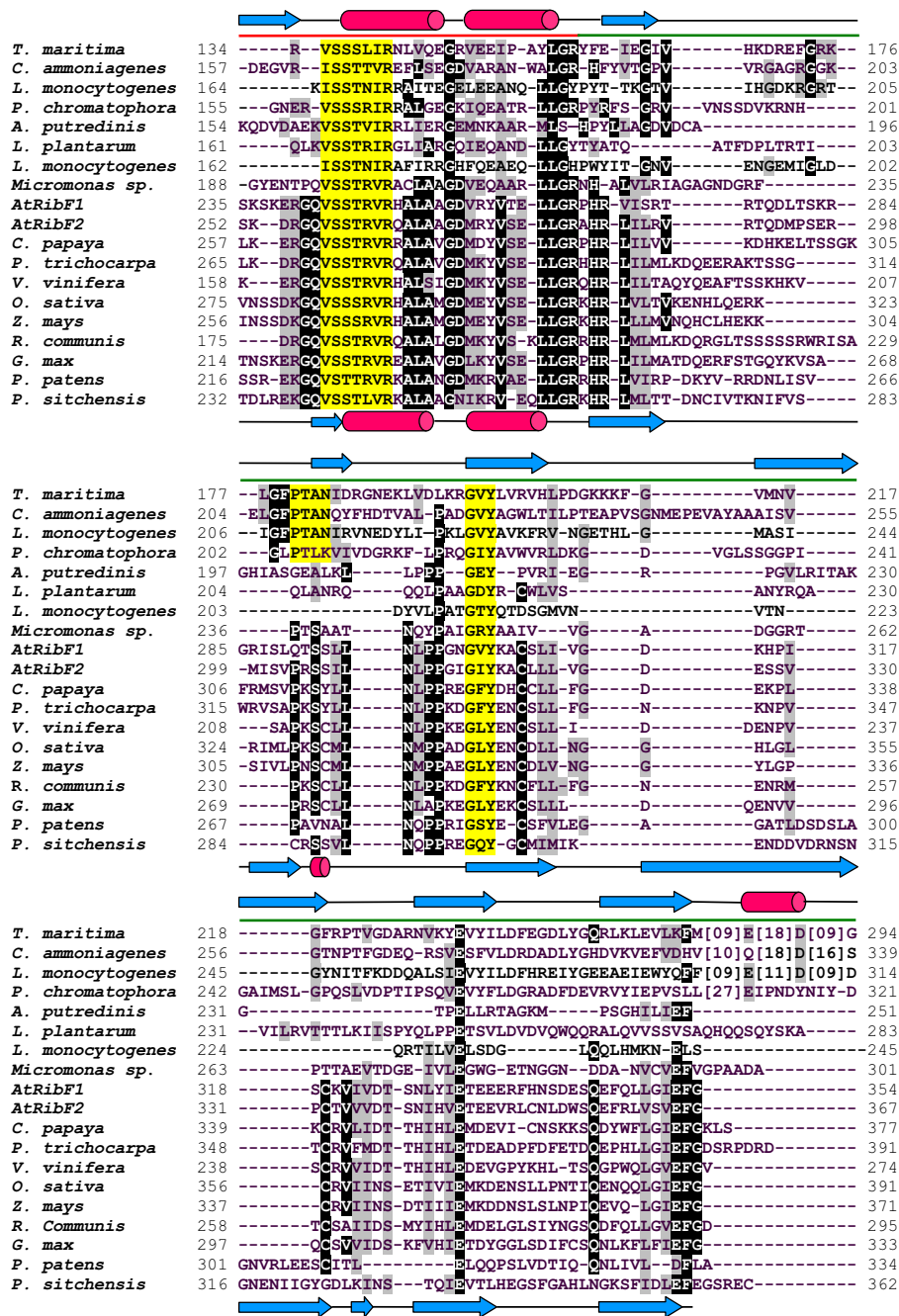


Figure 2 Alignment of a selection of FADS protein sequences used in this study (part 2 of 2). The alignment includes bifunctional FADS-type I proteins from *Thermotoga maritima* (Q9WZV1), *Corynebacterium ammoniagenes* (Q59263), *Listeria monocytogenes* HCC23 (YP_002350202) and *Paulinella chromatophora* (YP_002048796.1), FADS-type II proteins from *Alistipes putredinis* DSM 17216 (ZP_02425815.1), *Lactobacillus plantarum* JDM1 (YP_003062293.1) and *Listeria monocytogenes* HCC23 (YP_002350850), and plant-like FADS from *Micromonas* sp. RCC299 (XP_002501784), *Arabidopsis thaliana* L., AtRibF1 (At5g23330) and AtRibF2 (At5g08340), *Carica papaya* (Cp00060g00820), *Populus trichocarpa* (Pt07g06690, EEE90505.1), *Vitis vinifera* L. (Vv00g06080, XP_002273393.1), *Oryza sativa* L. (Os03g58710, NP_001051594), *Zea mays* L. (NP_001151161.1), *Ricinus communis* L. (XP_002517319.1), *Glycine max* (EST assembly from Soybean Genome Project, DoE Joint Genome Institute), *Physcomitrella patens* L. (Pp00229g00440, A9TH63) and *Picea sitchensis* L. (ABR16575.1). N-terminus (red) and C-terminus (green) within FADS proteins are marked over the sequences. Secondary structure of *TmFADS* (pdb 1mrz) is shown in the upper line. Predicted secondary structure of AtRibF1 is shown in the bottom line. Conserved amino acids are shown in black. Catalytic motifs in FADS enzymes are highlighted in yellow.

Table 2 Eukaryotic genomes containing FADS-like proteins ⁽¹⁾

Type of protein	Genomes	N
FADS-type I	<i>Anopheles gambiae</i> <i>Babesia bovis</i> <i>Caenorhabditis japonica</i> strain DF5081 <i>Caenorhabditis remanei</i> strain PB4641 <i>Culex pipiens quinquefasciatus</i> <i>Plasmodium knowlesi</i> <i>Trichoplax adhaerens</i> <i>Paulinella chromatophora</i>	8
RFK	Most eukaryotic genomes	658
Plant-like FADS RFK	<i>Micromonas pusilla</i> <i>Micromonas</i> sp. RCC299	2
Plant-like FADS FH _y /RFK ⁽²⁾	Land plant genomes <i>Chlamydomonas reinhardtii</i> <i>Coccomyxa</i> sp. <i>Ostreococcus lucimarinus</i>	87 ⁽³⁾

¹ Check details in section "Sequence analysis" of Methods.

² FMN hydrolase fused to RFK in ref. 29.

³ Includes unigenes compiled from ESTs.

which correspond to RFK or FMNAT modules, respectively. In other cases the FADS-type I sequence was accompanied by either monofunctional prokaryotic FMNAT (5 genomes) or monofunctional prokaryotic RFK (2 genomes). For instance, the genome of *Alistipes putredinis* contains both a monofunctional RFK and a FADS-type II sequence. Furthermore, although most bacterial FADS and RFK proteins include the conserved PTAN motif, some sequence variants can be found, including PTLK, PTLN, PTIN or KTAN, which nevertheless conserve the C-terminal module length. As these genomes do not contain any other RFK related proteins, these sequence variants are supposed still to be responsible for the RFK activity.

FADS-type I sequences were also found in 8 eukaryotic species (Table 2), including *Anopheles gambiae*, *Caenorhabditis* sp., *Trichoplax adhaerens*, which is considered to be the most primitive multi-cellular animal known, or the freshwater amoeba *Paulinella chromatophora*, which harbours a cyanobacterial endosymbiont.

It has been proposed that the double enzymatic activity of FADS proteins might be the result of a gene fusion event that genetically perpetuated an ancient protein-protein interaction [8,34]. If this hypothesis holds true, it is remarkable that 1190 out of 1194 bacterial genomes have a copy of this fused gene (Table 1) while monofunctional RFKs are vastly predominant (658/755) across eukaryotic genomes (Table 2). This observed unbalance suggests that this fusion event, or functional coupling, would have been evolutionary favoured only in unicellular organisms, from which chloroplasts are thought to be derived.

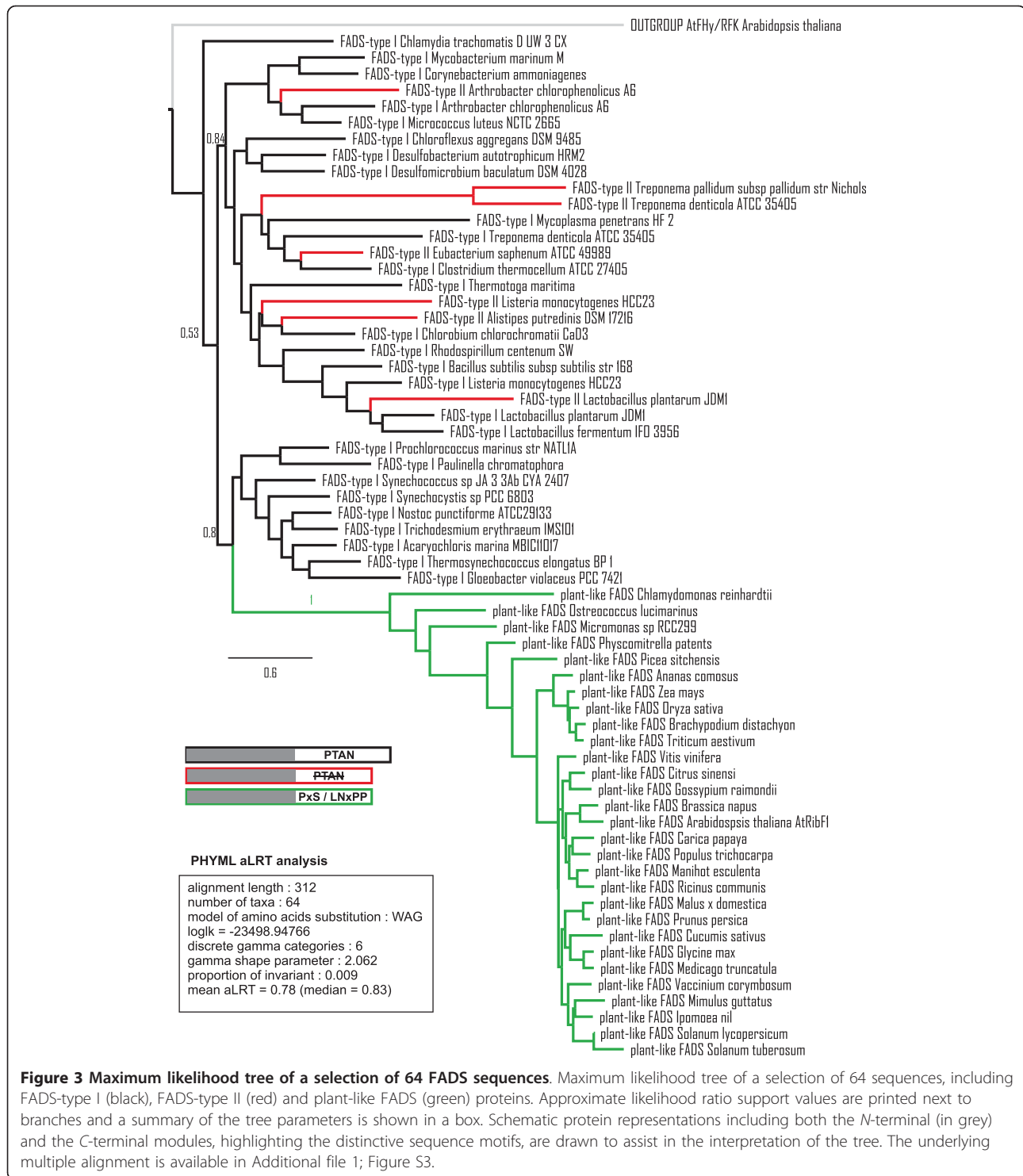
We would like to remark that FADS proteins are annotated in sequence databases with confusing or

contradictory names such as riboflavin biosynthesis protein RibF (*i.e.*, YP_002487514.1), FMN adenylylate transferase (*i.e.*, NP_692523.1), FMN adenylyltransferase (*i.e.*, YP_001623829.1), FAD synthase (*i.e.*, YP_518746), riboflavin kinase/FMN adenylyltransferase (*i.e.*, YP_932710), flavokinase/FAD synthetase (*i.e.*, YP_002783884), riboflavin kinase/FAD synthetase (*i.e.*, NP_975116.1). Indeed, non-strictly FADS sequences are also named as that (*i.e.*, YP_003062293.1). In the case of plants, plant-like FADS sequences are found as riboflavin kinase (*i.e.*, gb|CO899788.1|, gb|BG509026.1|, gb|CN491424.1|) or protein-s isoprenylcysteine o-methyltransferase (*i.e.*, PTHR12714, gb|GR935784.1|, cassava1385). This misleading variability in names is of no benefit to users, and clearly so a consensus in the nomenclature would be desirable. We hope this work makes a contribution in this direction.

A putative molecular function for the C-terminal module in plant-like FADS proteins

PSI-BLAST searches of both the complete sequence of the plant-like FADS *AtRibF1* and its C-terminus matched only NTs and RFKs (10 iterations, E-value < 3×10⁻⁸) from bacteria, cyanobacteria, yeast and human. No other family was identified as related to the C-terminus of plant-like FADS. The similarity between the newly identified C-terminal module and NTs was further explored in the pdb70 structural library using the fold-recognition algorithm HHPred in local and global mode. Local searches provided significant matches (E-value ≤ 1.4×10⁻¹⁷) to: the RFK-module of *TmFADS* (pdb 1mrz, 1s4m, 1t6x, 1t6y, 1t6z, 2i1l; [9,10]), *SpRFK* (pdb 1n08, 1n05, 1n07, 1n06; [13]), *HsRFK* (pdb 1nb0, 1nb9, 1p4m, 1q9s; [14]) and *Trypanosoma brucei* RFK (pdb 3bnw). Apart from these hits, global searches with the C-terminal domain yielded significant matches (E-values ≤ 2.5×10⁻⁶) to: nicotinamide mononucleotide (NMN) adenylyl transferase/ribosylnicotinamide kinase from *Haemophilus influenzae* (pdb 1lw7), ethanolamine-phosphate cytidyltransferase from *H. sapiens* (pdb 3elb), nicotinamide-nucleotide adenylyltransferase (pdb 2qjt) from *Francisella tularensis* and the C-terminal module of bifunctional nicotinamide mononucleotide (NMN) adenylyltransferase/Nudix hydrolase from *Synechocystis* sp. (*SyNadM-Nudix*) (pdb 2qjo; [35]).

To evaluate the possible role of the C-terminal module of plant-like FADSs and the molecular arrangement of this protein region we modelled the *AtRibF1* structure using all the above mentioned protein structures as templates. The best predicted models, as expected in terms of sequence similarity and alignment quality in putative binding and catalytic regions were obtained with the X-ray structure of *TmFADS*, *SpRFK* and *HsRFK*. In order to annotate putative functional residues, the comparative



models were superposed to the original templates, including all ligands present in the experimental coordinates. The superposition in Figure 4 indicate that plant conserved residues ²⁹⁰PxS²⁹² and ³⁰²GVY³⁰⁴ in the model occupy equivalent positions with respect to the ligands (ADP and FMN) present in the crystallographic

structure of *Tm*FADS. Similar results were obtained with *Sp*RFK and *Hs*RFK (data not shown). The predicted secondary structure of *At*RibF1 corresponds well with that of *Tm*FADS (see Figure 1 and 2), although it lacks the last α -helix at the N-terminal end, which is conserved also in *Sp*RFK and *Hs*RFK. This helix appears to be

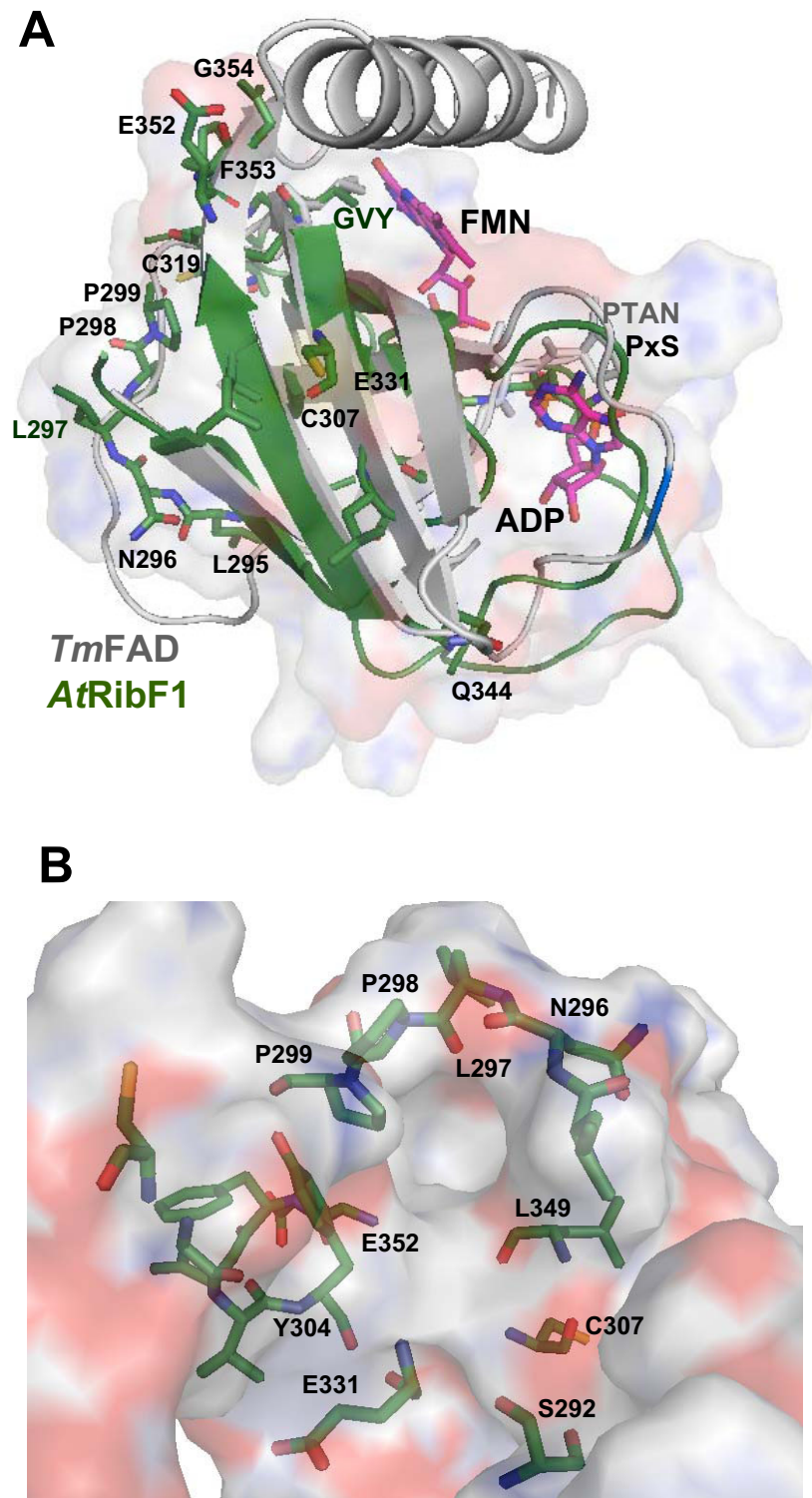


Figure 4 Structural comparison of the C-terminal module of both *TmFADS* (pdb 1t6y) and the homology model of *AtRibF1*. A) Ribbon diagrams of *TmFADS* (gray) and homology model of *AtRibF1* (green). Bound ADP and FMN ligands in pdb 1t6y are shown as sticks in CPK with carbons in magenta. Conserved residues in the C-terminus of plant-like FADS are superposed to catalytic residues in *TmFADS*. Electrostatic potential surface of *AtRibF1* is also shown. B) Putative new active site in the structural model of *AtRibF1*. Specific-plant conserved residues are shown as sticks with carbons in green.

crucial for a correct orientation of the bound flavin substrate [14] and its absence in *AtRibF1* is in agreement with the observed lack of RFK activity [30].

Figure 4 shows the specific-plant conserved residues Leu295, Asn296, Leu297, Pro298 and Pro299 (²⁹⁵LNLPP²⁹⁹ motif), Cys307, Cys319, Glu331, Gln344, Glu352, Phe353 and Gly354. It can be observed that the LNLPP motif is located in a flexible loop, in an opposite site of that bound FMN or ADP in *TmFADS* and orientated towards a cavity. Furthermore, the conserved residues Ser292, Cys307, Glu331 and Glu352 appear orientated towards this cavity suggesting that this site could possibly be a putative new binding-site in plant-like FADSs. It is also worth mentioning that Glu331 residue, invariant also in FADS and RFK families (*i.e.*, Glu268 in FADS-type I from *Corynebacterium ammoniagenes* [11]), has been proposed to act as a catalytic base.

As mentioned above, remote similarity of the C-terminal module of plant-like FADSs was found with the C-terminal domain of other families such as SyNadM-Nudix (E-value = 6.8×10^{-08}), which belongs to a large superfamily of pyrophosphohydrolases (see Additional file 1; Figure S4). In *Arabidopsis* 27 Nudix hydrolase genes have been found and the proteins they encode are able to hydrolyze various types of nucleoside diphosphates derivatives such as ADP-glucose, ADP-ribose and a wide range of its derivatives, FAD, NADH, NADPH, and diadenosine polyphosphates [36]. Moreover, a remote sequence consensus of this protein region including the LN_xPP motif was found with serine/threonine phosphatases 2C and members of the hydrolase superfamily. These observations suggest that the C-terminal module of *AtRibF1* could have a function other than RFK enzymatic activity. Sandoval *et al.* [30] showed that purified recombinant *AtRibF1* and *AtRibF2* enzymes only display FADS activity, with undetectable RFK activity and hence assumed that these are indeed monofunctional enzymes. However, they were able to measure FMN hydrolase, FAD pyrophosphatase and RFK activities in Percoll-isolated chloroplasts.

As mentioned above, our bioinformatic analyses point out that plant-like FADS proteins could be bifunctional enzymes. More precisely, structural similarities predict a hydrolase and phosphatase activity for the C-terminal module, although the possibility to have a non-enzymatic regulatory role or to be a simple evolutionary relic should not be dismissed. Nevertheless, considering the results of Sandoval *et al.* [30] and ours, we could speculate that some of the measured activities in isolated chloroplasts (*i.e.*, FMN hydrolase or FAD pyrophosphatase) could be associated to this C-terminal module. In order to test this hypothesis we have designed some experiments with recombinant plant-like FADS from soybean (*Glycine max*) and preliminary results seem to

indicate that its C-terminal module might have a hydrolytic activity since *GmFADS* was able to convert FMN into RF (data not shown). Interestingly, this activity was not detected in purified FADS from *C. ammoniagenes*, a typical FADS-type I protein [11]. While these preliminary results seem to be in agreement with our theoretical analyses, clearly further investigations are necessary to confirm the possible enzymatic role of the C-terminal module of plant-like FADS. Future work will be done by using recombinant plant-like FADS (*GmFADS*) in order to confirm this observed hydrolytic enzymatic activity.

Conclusions

Plant-like FADS enzymes are distributed across a variety of green plant lineages and constitute a divergent protein family clearly of cyanobacterial origin. Homology models predict that plant-specific conserved residues are orientated towards a cavity, building a distinct active site when compared to that involved in substrate binding and catalysis in the C-terminus of typical FADS-type I enzymes. The remote relationship reported here between plant-like FADS proteins and members of pyrophosphohydrolase or phosphatase superfamilies as well as preliminary experimental results suggest that the C-terminal module of these proteins, clearly of bacterial origin, might be involved in a catalytic function.

Methods

Sequence analysis

The NCBI non-redundant protein sequences (nr), nucleotide collection (nr/nt) and concise microbial protein databases, and the CyanoBase (<http://genome.kazusa.or.jp/cyanobase/>) sequence library, were scanned with PSI-BLAST [37] and TBLASTN, in order to retrieve sequences similar (E-values < 10^{-14}) to: *i*) FADS from *Thermotoga maritima* (UniProtKB Q9WZW1 [9,10]), *ii*) RFK from *Bacillus subtilis* (GenBank AAC00333.1) and *iii*) the plant-like FADS *AtRibF1* (At5g23330, NP_568429, GenBank ACH56223.1) or *AtRibF2* (At5g08340; NP_568192, GenBank ACH56224.1). To increase sensitivity, further similar sequences were retrieved by scanning either the N-terminal or the C-terminal modules of prokaryotic and plant-like FADS and RFK proteins.

In order to increase the recovery of plant sequences, which are currently distributed from a variety of repositories, the *AtRibF1* sequence was also scanned against JGI Genome portal (<http://genome.jgi-psf.org/>), Phytozome (<http://www.phytozome.net/>) and PLAZA (<http://bioinformatics.psb.ugent.be/plaza/>) with E-values < 10^{-50} . Finally, further searches were performed against NCBI Expressed Sequence Tags (filter: *Viridiplantae*) and TIGR Plant Transcript Assembly databases, with E-values < 10^{-20} .

Multiple alignments

The multiple alignment in Figure 1 and 2 was constructed in three steps, using the *AtRibF1* protein as seed:

- 1) A sequence profile of plant-like proteins was compiled with ClustalW [38].
- 2) A selection of bacterial and eukaryotic sequences was aligned to the profile.
- 3) The sequence of *Thermotoga maritima* was added following the fold recognition alignment produced by HHPred [39] using the Protein data Bank structure 1mrz. This template was predicted to be the best modelling template by the BioInfoBank Meta Server (see below).

The multiple alignment used to drive the phylogenetic analysis summarized in Figure 3 was constructed as follows:

- 1) A representative set of FADS-type I and FADS-type II sequences were multiply aligned with CLUSTALW [38] and their secondary structure was predicted with PSIPRED [40] taking the *Thermotoga maritima* sequence as a representative. The sequences selected are representative of bacterial species having FADS-type I and/or FADS-type II, and belonging to phyla *Actinobacteria*, *Firmicutes*, *Spirochaetes* and *Tenericutes*. Also sequences from species containing only FADS-type I, which belong to phyla *Chlamydiae*, *Chlorobi*, *Chloroflexi* (green non-sulfur bacteria), *Cyanobacteria*, *Proteobacteria* (purple bacteria) and *Thermotogae* are included, providing a good coverage of diverse phylogenetic bacterial groups.
- 2) The sequence of the cytosolic protein *AtFH_y/RFK* from *Arabidopsis thaliana* [29] was added and aligned as an outgroup, and the resulting multiple alignment was converted to a hidden Markov model in HHSearch format with *hhmake* [39].
- 3) All plant-like FADS protein sequences that covered most of both domains (from the HxGH to the GxY motif) were considered complete, aligned with CLUSTALW [38] and converted to a hidden Markov model, including the PSIPRED secondary structure prediction of *AtRibF1*. The plant sequences selected cover the diverse phylogenetic groups of green plants as shown in Additional file 1; Figure S1.
- 4) The profiles 2) and 3) were globally aligned with *hhalign* [39] and the resulting alignment was trimmed by removing the poorly aligned segments, following the protocol "automated1" of the trimAL software (<http://trimal.cgenomics.org/>) [41]. The original and trimmed alignments are available in Additional file 1; Figures S2 and S3.

Phylogenetic analysis

The trimmed multiple alignment described above was used to drive a maximum likelihood phylogenetic tree with PhyML [42] and the best fitting amino acid substitution model selected with ProtTest [43]. The tree was midpoint-rooted and plotted with FigTree (<http://tree.bio.ed.ac.uk/software/figtree>).

Molecular modelling

To further investigate possible molecular functions of the C-terminal module of plant-like FADS proteins the complete protein sequence of *AtRibF1* as well as its C-terminal domain were submitted to the BioInfoBank Meta Server [44]. The best aligned template provided by FUGUE [45] and PSI-BLAST [37] were subsequently employed to drive homology modelling with Modeller [46]. Further templates were found with HHpred [39] scans of the pdb70 library. Structural superposition and alignments were performed with the software MAMMOTH [47]. Molecular structures and models were inspected, analyzed and plotted with PyMol [48]. Secondary structure predictions were made with PSIPRED [40].

Production of GmFADS and activity measurement

GmFADS gene synthesis, and *E. coli* protein over-expression and purification were carried out by GeneScript USA Inc. Conversion of FMN into RF was qualitatively assayed by addition of *GmFADS* or *CaFADS* [11] (final enzyme concentration ~ 0.2 μM) to a solution (final volume, 150 μl) containing 50 μM FMN, either 0 or 0.2 mM ATP and 10 mM MgCl₂, in 50 mM Tris-HCl, pH 8.0. After incubation overnight at 25°C or 5 min at 37°C the reaction was stopped by boiling the preparations for 5 minutes. Transformation of FMN was visualized by resolving the products of the reaction at room temperature and in the dark by TLC on Silica Gel SIL-G-25 (20 cm × 20 cm, thickness 0.25 mm) plates. The moving phase was a solution of butanol:acetic acid: water (12:3:5). Flavin TLC spots were visually examined and scanned by determining their fluorescence under an ultraviolet light [11].

Additional material

Additional file 1: Additional Figures. Figure S1.- Taxonomy of plant-like FADS sequences used in the phylogenetic analysis presented in the main text (Figure 3). Figure S2.- Multiple alignment of a representative set of FADS-type I, FADS-type II and plant-like FADS protein sequences. The alignment was obtained, as explained in Methods, to drive the phylogenetic analysis presented in the paper. Figure S3.- Trimmed multiple alignment of the set of FADS-type I, FADS-type II and plant-like FADS protein sequences used to build the PHYML maximum likelihood tree in Figure 3 of the paper. The alignment was trimmed with the 'automated1' option of the trimAL software. Figure S4.- HHPred alignment of structural template SyNadMNudix (pdb 2qjo) and *AtRibF1*.

List of Abbreviations

FADS-type I: bifunctional prokaryotic enzyme with riboflavin kinase and FMN adenyltransferase activities; FADS-type II: prokaryotic enzyme with FMN adenyltransferase activity of FADS in the N-terminal module and a putative different activity in the C-terminal module; FMNAT: monofunctional prokaryotic enzyme with FMN adenyltransferase activity; FMNAT-module: module of FADS with FMN adenyltransferase activity; plant-like FADS: bifunctional enzyme found in plants with FMN adenyltransferase activity of FADS in the N-terminal domain and a putative different activity to that of FADS-type I in the C-terminal domain; RFK: monofunctional prokaryotic enzyme with riboflavin kinase activity; RFK-module: module of FADS with riboflavin kinase activity; Tris: Tris (hydroxymethyl)aminomethane.

Acknowledgements

We thank L. Sánchez-Pulido, P. Vinuesa and D. Moreno for comments on the manuscript. S. Arilla-Luna holds a fellowship from the Spanish Ministry of Science and Innovation (FPU program). This work was supported by CONSI +D, DGA (Grant PM062/2007 to M.M. and I.Y.), the Spanish Ministry of Science and Innovation (BIO2007-65890-C02-01 and BIO2010-14983 to M.M.) and Gobierno de Aragón (DGA-GE B18 to M. M. and I.Y. and DGA-GC A06 to B.C-M).

Author details

¹Estación Experimental de Aula Dei, Consejo Superior de Investigaciones Científicas (CSIC), Avda. Montañana, 1005, 50059 Zaragoza, Spain. ²Institute of Biocomputation and Physics of Complex Systems (BIFI), Universidad de Zaragoza, Mariano Esquillor, Edificio I + D, 50018 Zaragoza, Spain. ³Departamento de Bioquímica y Biología Molecular y Celular, Facultad de Ciencias, C/ Pedro Cerbuna 12, 5009 Zaragoza, Spain. ⁴Fundación ARAID, Zaragoza, Spain.

Authors' contributions

IY carried out the sequence analysis, sequence alignment and molecular modelling, participated in the design and coordination of the study, and drafted the manuscript. BCM participated in the design of the study, performed the phylogenetic analysis, and helped write the manuscript. SAL participated in the preliminary experimental studies. MM conceived the study, and participated in its design and helped draft the manuscript. All authors have read and approved the final manuscript.

Received: 30 April 2010 Accepted: 18 October 2010

Published: 18 October 2010

References

- Müller F: **Chemistry and Biochemistry of Flavoenzymes**. Edited by: Müller F. CRC Press Boca Raton, FL; 1991:1-77.
- Powers HJ: **Riboflavin (vitamin B-2) and health**. *Am J Clin Nutr* 2003, **77**:1352-1360.
- Joosten V, van Berkel WJ: **Flavoenzymes**. *Curr Opin Chem Biol* 2007, **11**:195-202.
- Van Berkel WJH: **Chemistry of flavoenzymes**. *Wiley Encyclopedia of Chemical Biology* John Wiley & Sons, Inc, Hoboken, NJ 2008.
- Merrill AH Jr, Lambeth JD, Edmondson DE, McCormick DB: **Formation and mode of action of flavoproteins**. *Annu Rev Nutr* 1981, **1**:281-317.
- Bacher A, Eberhardt S, Fischer M, Kis K, Richter G: **Biosynthesis of vitamin B2 (Riboflavin)**. *Annu Rev Nutr* 2000, **20**:153-167.
- Roje S: **Vitamin B biosynthesis in plants**. *Phytochemistry* 2007, **68**:1904-1921.
- Krupa A, Sandhya K, Srinivasan N, Jonnalagadda S: **A conserved domain in prokaryotic bifunctional FAD synthetases can potentially catalyze nucleotide transfer**. *Trends Biochem Sci* 2003, **28**:9-12.
- Wang W, Kim R, Jancarik J, Yokota H, Kim S-H: **Crystal structure of a flavin-binding protein from *Thermotoga maritima***. *Protein Struct Funct Genet* 2003, **52**:633-635.
- Wang W, Kim R, Yokota H, Kim S-H: **Crystal structure of a flavin-binding to FAD synthetase of *Thermotoga maritima***. *Protein Struct Funct Genet* 2005, **58**:246-248.
- Frago S, Martínez-Júlvez M, Serrano A, Medina M: **Structural analysis of FAD synthetase from *Corynebacterium ammoniagenes***. *BMC Microbiology* 2008, **8**:160-175.
- Herguedas B, Martínez-Júlvez M, Frago S, Medina M, Hermoso JA: **Crystallization and preliminary X-ray diffraction studies of FAD synthetase from *Corynebacterium ammoniagenes***. *Acta Cryst Section F - Structural Biology and Crystallization Communications* 2009, **65**:1285-1288.
- Bauer S, Kemter K, Bacher A, Huber R, Fischer M, Steinbacher S: **Crystal structure of *Schizosaccharomyces pombe* riboflavin kinase reveals a novel ATP and riboflavin-binding fold**. *J Mol Biol* 2003, **326**:1463-1473.
- Karthikeyan S, Zhou Q, Mseeh F, Grishin NV, Osterman AL, Zhang H: **Crystal structure of human riboflavin kinase reveals a β barrel fold and a novel active site arch**. *Structure* 2003, **11**:265-273.
- Solovieva IM, Kreneva RA, Leak DJ, Perumov DA: **The ribR gene encodes a monofunctional riboflavin kinase which is involved in regulation of the *Bacillus subtilis* riboflavin operon**. *Microbiology-SGM* 1999, **145**:67-73.
- Clarebout G, Villers C, Leclercq R: **Macrolide resistance gene mreA of *Streptococcus agalactiae* encodes a flavokinase**. *Antimicrob Agents Chemother* 2001, **45**:2280-2286.
- Kashchenko VE, Shavlovskii GM: **Purification and properties of riboflavin kinase of *Pichia guilliermondii***. *Biochemistry-Moscow* 1976, **41**:313-319.
- Santos MA, Jiménez A, Revuelta JL: **Molecular characterization of FMN1, the structural gene for the monofunctional flavokinase of *Saccharomyces cerevisiae***. *J Biol Chem* 2000, **275**:28618-28624.
- Wu M, Repetto B, Glerum DM, Tzagoloff A: **Cloning and characterization of FAD1, the structural gene for flavin adenine dinucleotide synthetase of *Saccharomyces cerevisiae***. *Mol Cell Biol* 1995, **15**:264-271.
- McCormick DB, Oka M, Bowers-Komro DM: **Purification and properties of FAD synthetase from liver**. *Methods Enzymol* 1997, **280**:407-413.
- Huerta C, Borek D, Machius M, Grishin NV, Zhang H: **Structure and mechanism of an eukaryotic FMN adenyltransferase**. *J Mol Biol* 2009, **389**:388-400.
- Brizio C, Galluccio M, Wait R, Torchetti EM, Bafunno V, Accardi R, Gianazza E, Indiveri C, Barile M: **Over-expression in *Escherichia coli* and characterization of two recombinant isoforms of human FAD synthetase**. *Biochem Biophys Res Comm* 2006, **344**:1008-1016.
- Torchetti EM, Brizio C, Colella M, Galluccio M, Giancaspero TA, Indiveri C, Roberti M, Barile M: **Mitochondrial localization of human FAD synthetase isoform 1**. *Mitochondrion* 2010, **10**:263-273.
- Sobhanaditya J, Rao NA: **Affinity-chromatographic procedure for the purification of the enzyme from mung-bean (*Phaseolus aureus*) seeds and conformational-changes on its interaction with ortho-phosphate**. *Biochem J* 1981, **197**:227-232.
- Sadasivam S, Shanmugasundaram ER: **Studies on flavokinase of *Solanum nigrum* L.** *Enzymologia* 1966, **31**:203-208.
- Giri KV, Krishnaswamy PR, Rao NA: **Occurrence of flavokinase activity in plants**. *Nature* 1957, **179**:1134-1135.
- Giri KV, Rao NA, Cama HR, Kumar AS: **Studies on flavinadenine dinucleotide-synthesizing enzyme in plants**. *Biochem J* 1960, **75**:381-386.
- Mitsuda H, Tsuge H, Tomozawa Y, Kawai F: **Multiplicity of acid phosphatase catalyzing FMN hydrolysis in spinach leaves**. *J Vitaminol (Kyoto)* 1970, **16**:52-57.
- Sandoval FJ, Roje S: **An FMN hydrolase is fused to riboflavin kinase homolog in plants**. *J Biol Chem* 2005, **280**:38337-38345.
- Sandoval FJ, Zhang Y, Roje S: **Flavin nucleotide metabolism in plants: Monofunctional enzymes synthesize FAD in plastids**. *J Biol Chem* 2008, **283**:30890-30900.
- Giancaspero TA, Locato V, de Pinto MC, de Gara L, Barile M: **The occurrence of riboflavin kinase and FAD synthetase ensures FAD synthesis in tobacco mitochondria and maintenance of cellular redox status**. *FEBS J* 2009, **276**:219-231.
- Lemieux C, Otis C, Turmel M: **Ancestral chloroplast genome in *Mesostigma viride* reveals an early branch of green plant evolution**. *Nature* 2000, **403**:649-652.
- Martin W, Rujan T, Richly E, Hansen A, Cornelsen S, Lins T, Leister D, Stoebe B, Hasegawa M, Penny D: **Evolutionary analysis of *Arabidopsis*, cyanobacterial and chloroplast genomes reveals plastid phylogeny and thousands of cyanobacterial genes in the nucleus**. *Proc Natl Acad Sci USA* 2002, **99**:12246-12251.
- Marcotte EM, Pellegrini M, Ng HL, Rice DW, Yeates TO, Eisenberg D: **Detecting protein function and protein-protein interactions from genome sequences**. *Science* 1999, **285**:751-753.

35. Huang N, Sorci L, Zhang X, Brautigan C, Li X, Raffaelli N, Magni G, Grishin NV, Osterman A, Zhang H: **Bifunctional NMN adenylyltransferase/ADP ribose pyrophosphatase: structure and function in bacterial NAD metabolism.** *Structure* 2008, **16**:196-209.
36. Ogawa T, Yoshimura K, Miyake H, Ishikawa K, Ito D, Tanabe N, Shigeoka S: **Molecular characterization of organelle-type Nudix hydrolases in *Arabidopsis*.** *Plant Physiol* 2008, **148**:1412-1424.
37. Altschul SF, Madden TL, Schaffer AA, Zhang J, Zhang Z, Miller W, Lipman DJ: **Gapped BLAST and PSI-BLAST: a new generation of protein database search programs.** *Nucl Acids Res* 1997, **25**:3389-3402.
38. Thompson JD, Higgins DG, Gibson TJ: **CLUSTAL W: improving the sensitivity of progressive multiple sequence alignment through sequence weighting, position-specific gap penalties and weight matrix choice.** *Nucl Acids Res* 1994, **22**:4673-4680.
39. Söding J, Biegert A, Lupas AN: **The HHpred interactive server for protein homology detection and structure prediction.** *Nucl Acids Res* 2005, **33**:W244-W248.
40. McGuffin LJ, Bryson K, Jones DT: **The PSIPred protein structure prediction server.** *Bioinformatics* 2000, **16**:404-405.
41. Capella-Gutierrez S, Silla-Martínez JM, Gabaldón T: **trimAl: a tool for automated alignment trimming in large-scale phylogenetic analyses.** *Bioinformatics* 2009, **25**:1972-1973.
42. Guindon S, Gascuel O: **A simple, fast and accurate algorithm to estimate large phylogenies by maximum likelihood.** *Syst Biol* 2003, **52**:696-704.
43. Abascal F, Zardoya R, Posada D: **ProtTest: Selection of best-fit models of protein evolution.** *Bioinformatics* 2005, **21**:2104-2105.
44. Ginalski K, Elofsson A, Fischer D, Rychlewski L: **3D-Jury: a simple approach to improve protein structure predictions.** *Bioinformatics* 2003, **19**:1015-1018.
45. Shi J, Blundell TL, Mizuguchi K: **FUGUE: Sequence-structure homology recognition using environment-specific substitution tables and structure-dependent gap penalties.** *J Mol Biol* 2001, **310**:243-257.
46. Sali A, Blundell AT: **Comparative protein modelling by satisfaction of spatial restraints.** *J Mol Biol* 1993, **234**:779-815.
47. Ortíz AR, Strauss CE, Olmea O: **MAMMOTH (matching molecular models obtained from theory): an automated method for model comparison.** *Protein Sci* 2002, **11**:2606-2621.
48. DeLano WL: **The PyMOL User's Manual.** DeLano Scientific, Palo Alto, CA, USA 2002.

doi:10.1186/1471-2148-10-311

Cite this article as: Yruela et al.: Evolutionary divergence of chloroplast FAD synthetase proteins. *BMC Evolutionary Biology* 2010 **10**:311.

**Submit your next manuscript to BioMed Central
and take full advantage of:**

- Convenient online submission
- Thorough peer review
- No space constraints or color figure charges
- Immediate publication on acceptance
- Inclusion in PubMed, CAS, Scopus and Google Scholar
- Research which is freely available for redistribution

Submit your manuscript at
www.biomedcentral.com/submit

