

## Video Article

# Loop-mediated Isothermal Amplification (LAMP) Assays for the Species-specific Detection of *Eimeria* that Infect Chickens

Christopher P. Barkway<sup>1</sup>, Rebecca L. Pocock<sup>1</sup>, Vladimir Vrba<sup>2</sup>, Damer P. Blake<sup>1</sup><sup>1</sup>Department of Pathology and Pathogen Biology, Royal Veterinary College, London<sup>2</sup>BIOPHARM, Research Institute of Biopharmacy and Veterinary DrugsCorrespondence to: Damer P. Blake at [dblake@rvc.ac.uk](mailto:dBlake@rvc.ac.uk)URL: <http://www.jove.com/video/52552>DOI: [doi:10.3791/52552](https://doi.org/10.3791/52552)Keywords: Infection, Issue 96, Loop-mediated isothermal amplification, LAMP, Coccidiosis, *Eimeria*, Chickens, Diagnostics, Field tools

Date Published: 2/20/2015

Citation: Barkway, C.P., Pocock, R.L., Vrba, V., Blake, D.P. Loop-mediated Isothermal Amplification (LAMP) Assays for the Species-specific Detection of *Eimeria* that Infect Chickens. *J. Vis. Exp.* (96), e52552, doi:10.3791/52552 (2015).

## Abstract

*Eimeria* species parasites, protozoa which cause the enteric disease coccidiosis, pose a serious threat to the production and welfare of chickens. In the absence of effective control clinical coccidiosis can be devastating. Resistance to the chemoprophylactics frequently used to control *Eimeria* is common and sub-clinical infection is widespread, influencing feed conversion ratios and susceptibility to other pathogens such as *Clostridium perfringens*. Despite the availability of polymerase chain reaction (PCR)-based tools, diagnosis of *Eimeria* infection still relies almost entirely on traditional approaches such as lesion scoring and oocyst morphology, but neither is straightforward. Limitations of the existing molecular tools include the requirement for specialist equipment and difficulties accessing DNA as template. In response a simple field DNA preparation protocol and a panel of species-specific loop-mediated isothermal amplification (LAMP) assays have been developed for the seven *Eimeria* recognised to infect the chicken. We now provide a detailed protocol describing the preparation of genomic DNA from intestinal tissue collected post-mortem, followed by setup and readout of the LAMP assays. *Eimeria* species-specific LAMP can be used to monitor parasite occurrence, assessing the efficacy of a farm's anticoccidial strategy, and to diagnose sub-clinical infection or clinical disease with particular value when expert surveillance is unavailable.

## Video Link

The video component of this article can be found at <http://www.jove.com/video/52552/>

## Introduction

Global chicken production has increased ten-fold over the last 50 years with the developing world hosting nearly four times the expansion witnessed in the developed world ([www.faostat.org](http://www.faostat.org)). As the relevance of chicken production to world food security has grown so too has the profile of pathogens which can cause serious disease in chickens. One prime example are the *Eimeria* species, ubiquitous protozoan parasites which can cause the enteric disease coccidiosis<sup>1</sup>. Wherever chickens are reared one or more *Eimeria* species are likely to be common<sup>2-4</sup>. In the developed world *Eimeria* are primarily controlled by chemoprophylaxis, employing shuttle or rotation programmes to minimise the impact of resistance<sup>5</sup>. Live vaccines are also used in systems where bird value is sufficient to justify the cost (e.g., breeding stock, layers and some broilers<sup>5</sup>). As a result of these measures clinical coccidiosis is often well controlled, although sub-clinical infection is common<sup>5</sup>. In the developing world vaccination is rare and drug application frequently less well informed. As a consequence sub-clinical and clinical coccidiosis is more common and exerts a significant economic impact<sup>3</sup>.

Diagnosis of eimerian infection has traditionally relied on lesion scoring post-mortem, although even the authors of the most widely used scoring system commented that for some species "it seems doubtful whether such a procedure should be attempted in any but moderately severe infections"<sup>6</sup>. Supplementary evidence can be gathered through microscopic detection of the environmentally resistant oocyst lifecycle stage in faecal or litter samples, although overlapping morphology can confound all but the expert<sup>6,7</sup>. Molecular alternatives using polymerase chain reaction (PCR), random amplification of polymorphic DNA PCR (RAPD-PCR) and quantitative PCR technologies have been available for up to 20 years<sup>8-10</sup>, but to date they have failed to become popular. Relative expense and the requirement for specialist laboratory equipment or processing have limited their uptake, despite the often subjective and technically demanding nature of the older pathology- and microscopy-based approaches<sup>10,11</sup>. Such limitations can be exaggerated in many of the poorer regions of the world such as South East Asia, where the impact of coccidiosis on poverty may be proportionately greater<sup>12</sup>. In response there is a clear demand for new straightforward and sensitive, but cost effective, *Eimeria* species-specific diagnostic assays.

Loop-mediated isothermal amplification (LAMP) is an easy to prepare DNA polymerase-driven technique that is capable of amplifying large quantities of DNA. Most importantly, LAMP uses a *Bst* DNA polymerase instead of the *Taq* DNA polymerase commonly used in PCR, which facilitates DNA amplification at a single constant temperature without the requirement for thermal cycling<sup>13,14</sup>. LAMP can be amenable to application in even the most rudimentary laboratory or in the field. Characterised by relative resistance to many PCR inhibitors, high sensitivity and specificity, LAMP assays have been developed for a wide range of pathogens including infectious bursal disease virus, *Clostridium perfringens* and *Cryptosporidium*<sup>15-17</sup>. In response to demand for new cost-effective *Eimeria* species-specific diagnostics a panel of LAMP

assays specific to each of the seven *Eimeria* species that infect chickens has been developed<sup>18</sup>. Applications for the new assays include monitoring parasite occurrence, of particular value given the association of species such as *Eimeria maxima* or *Eimeria necatrix* with poor economic performance<sup>3,4</sup>. Other applications include assessing the efficacy of a farm's anticoccidial strategy, diagnosis of sub-clinical infection or clinical disease and evaluation of risk posed by *Eimeria* to a farm.

## Protocol

### 1. Template Preparation

NOTE: Any genomic DNA template suspected to contain DNA derived from one of the seven *Eimeria* species which infect chickens can be used as template for LAMP-based *Eimeria* species identification. Intestinal tissue samples for field diagnostic analysis should be collected during routine post-mortem as described here.

- Choose the section (or sections) of intestine to be tested. See Table 1 for a guide to sample site selection and the *Eimeria* species most likely to be present<sup>18</sup> and **Figure 1** for the species-specific range of distribution and location of the sampling sites.  
NOTE: This is of key importance since *Eimeria* are notably host site specific. Each species that infects chickens is defined by the intestinal region that it targets<sup>9</sup>. The decision may be influenced by previous experience of the farm, interest in one or more specific *Eimeria* species or other diagnostic indicators<sup>6</sup>.
- Excise 5 cm or longer lengths of the intestinal section(s) selected to test for *Eimeria* using sterile scissors or a scalpel. Optionally, store the samples for subsequent analysis in a fixative such as for example in RNAlater<sup>18</sup> or 95% ethanol.  
NOTE: If storing in ethanol the sample should be washed thoroughly in sterile tris-ethylenediaminetetraacetic acid (TE) buffer prior to use.
- Cut the sample open longitudinally, remove most intestinal contents (if present) and scrape cells from the mucosal layer free using either the edge of a sterile glass microscope slide or an ethanol/flamm sterilised scissor blade. Optionally for a pooled sample include cells from all four of the species-specific intestinal sites in a single tube.
- Put the scraped material into a sterile 1.5 ml screw-top microcentrifuge tube containing 100  $\mu$ l sterile TE buffer including 10% (w/v) Chelex 100 resin.
- Shake each sample vigorously for 1 min. Ensure that the screw top is firmly closed and then incubate in a boiling water bath for 10 min.
- After boiling allow each sample to cool at the ambient temperature for 1-2 min.
- Centrifuge each sample using a microcentrifuge at top speed (e.g.,  $\sim 10,000 \times g$ ) for 1 min.
- Collect 2  $\mu$ l of the resulting supernatant to be template in each LAMP assay to be undertaken. Optionally, pool more than one intestinal site in a single tube to provide a multi-site assay.

### 2. *Eimeria* LAMP Primer Preparation (Pre-assay)

- Prepare *Eimeria* LAMP primer stocks adequate for 100 assays:
  - Reconstitute each lyophilised *Eimeria* LAMP primer by adding molecular grade water to a concentration of 100  $\mu$ M (as specified by the manufacturer). If not specified, calculate the volume of molecular grade water required using the physical and molecular weights of each primer.
  - Pipette 60  $\mu$ l molecular grade water into a separate 0.5 ml flip-top microcentrifuge tube for each *Eimeria* species to be assayed.
  - Add primers FIP, BIP, F3, B3, LF and LB specific to the target *Eimeria* species to the water using the volumes shown in Table 2, creating a series of seven species-specific primer mixes.
  - Briefly vortex mix the primer solution, then pulse microfuge and freeze until required.
- Prepare a LAMP reaction mastermix for each *Eimeria* species to be assayed. Multiply the volumes shown in Table 3 by the number of samples and add three to a positive control, negative control and pipetting spare. Pipette into a 0.5 or 1.5 ml flip-top microcentrifuge tube.

### 3. *Eimeria* LAMP Assay

- Pipette 23  $\mu$ l *Eimeria* species-specific *Bst* DNA polymerase/LAMP mastermix into a 0.5 ml microcentrifuge tube.
- Add 2  $\mu$ l DNA template (prepared in section 1), making a final reaction volume of 25  $\mu$ l.
- Add 2  $\mu$ l *Eimeria* species-specific genomic DNA to one reaction (positive control). Add 2  $\mu$ l molecular grade water to reaction (negative control).  
NOTE: If species-specific genomic DNA is not available a previous positive LAMP or standard PCR product may be used instead.
- Incubate in a water bath or heat block at 62°C for 30 min. Optionally, de-activate the *Bst* DNA polymerase by heating to 80°C for 10 min if the reaction is not going to be read immediately.

### 4. LAMP Assay Read-out

- At the conclusion of the incubation assess the colour of each reaction by eye under indoor light. Negative results appear pink to violet in colour, positive results appear sky blue<sup>20</sup>.
- Optionally, confirm the LAMP assay result in a laboratory by mixing 5  $\mu$ l LAMP reaction product with 1  $\mu$ l DNA gel loading buffer for agarose gel electrophoresis using a 2% agarose gel in 1 x Tris/Borate/EDTA (TBE) buffer, pre-stained using a nucleic acid stain (5  $\mu$ l per 50 ml agarose). Add 5  $\mu$ l of a 1Kb molecular size DNA ladder to lane 1 of the gel to allow fragment size calculation.

## Representative Results

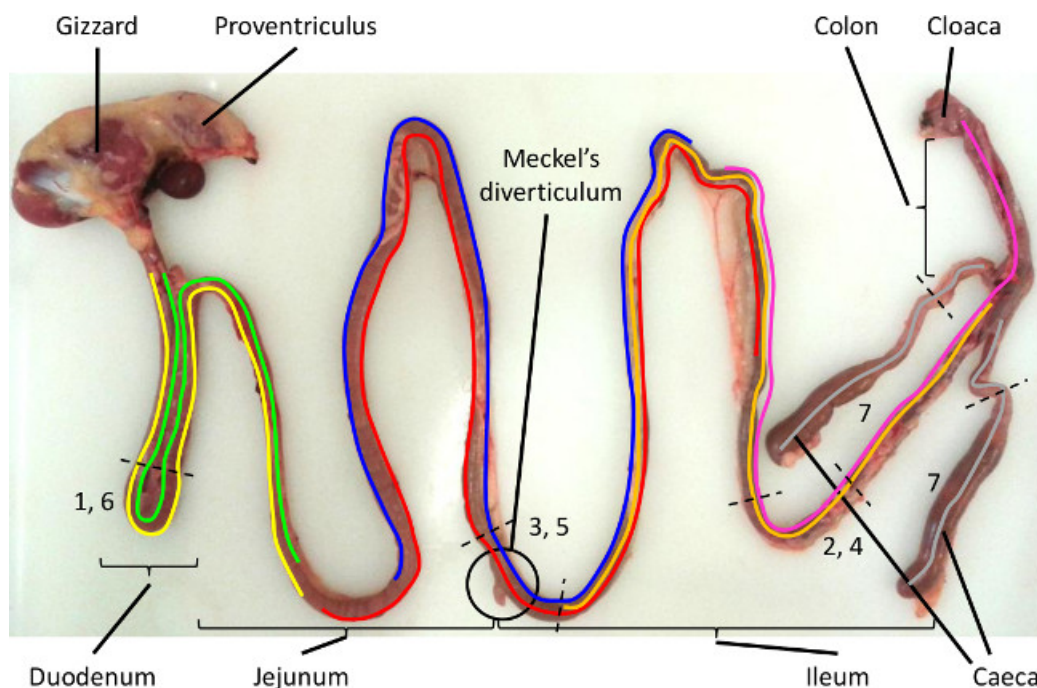
### Assay validation

During validation each *Eimeria* species-specific LAMP assay was tested using a panel of pure DNA samples representing all seven *Eimeria* species that infect the chicken, as well as chicken genomic DNA as a host control. Agarose gel electrophoresis was used to resolve each assay and demonstrated absolute species specificity with no host cross-reactivity<sup>18</sup>. Next, a ten-fold serial dilution series prepared using purified *Eimeria tenella* genomic DNA revealed an assay sensitivity limit of between one and ten genome copies<sup>18</sup>. No upper limit was determined with positive results achieved up to and including the highest concentration (100,000 genome copies)<sup>18</sup>.

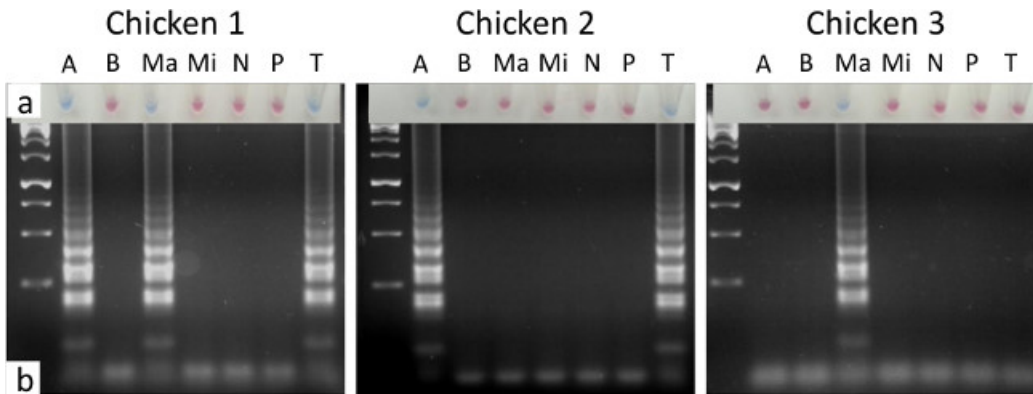
### Application with field samples

Samples collected for *Eimeria* testing are likely to be derived from chickens found dead, culled as a consequence of poor health or culled for sentinel health surveillance, indicating a likely sample size of between one and three when part of a routine. Testing three birds collected from a US broiler farm as part of a surveillance programme yielded three sets of intestinal samples. Targeted application of the species-specific LAMP assays, prioritising the preferred intestinal sites for each *Eimeria* species (Table 1), allowed visual identification of eimerian infection in all birds tested using hydroxynaphthol blue as an indicator (Figure 2A). The colour achieved with a negative LAMP reaction when using hydroxynaphthol blue can range from violet to pink, but is always distinct from the blue achieved by a positive result. Confirmation by agarose gel electrophoresis provided comparable results (Figure 2B). During field application the user may choose to apply the full screen against all seven species, or target only those species prioritised as important or known to be circulating on the farm or surrounding area.

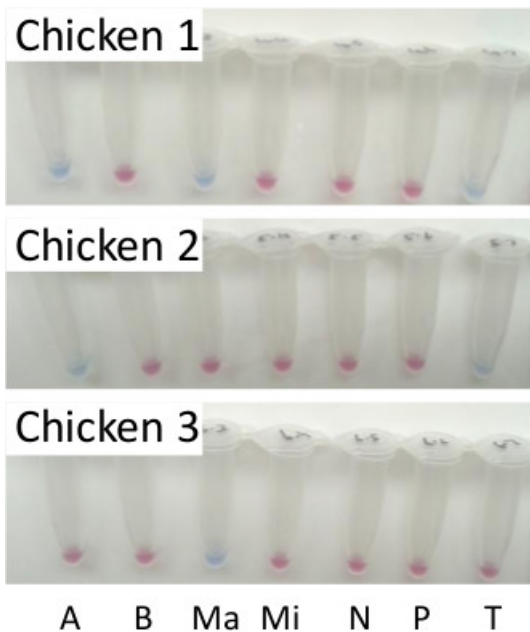
The failure of PCR-based approaches to become established as diagnostics for the occurrence of *Eimeria* emphasises the requirement for simplicity in any new test. While LAMP offers simpler preparation and processing than PCR, the requirement to test multiple intestinal sites per bird remains discouraging. Production of a single pooled DNA sample per bird, which can then be tested with one or more LAMP assays, is likely to be more appealing. Processing one pooled sample per bird, representing material collected from each of the specific intestinal sites described in Table 1 and pooled prior to DNA preparation, for testing with all seven LAMP assays provided the same result as when each intestinal site was processed separately (Figure 2 compared with Figure 3).



**Figure 1. Intestinal sampling sites for LAMP detection of *Eimeria* species parasites that infect chickens.** The intestinal regions targeted by each *Eimeria* species is highlighted by the coloured lines, with the preferred sites of sampling indicated by the number between the dotted black lines (*E. acervulina*: yellow/1, *E. brunetti*: pink/2, *E. maxima*: blue/3, *E. mitis*: orange/4, *E. necatrix*: red/5, *E. praecox*: green/6 and *E. tenella*: grey/7). Please click [here](#) to view a larger version of this figure.



**Figure 2. LAMP diagnosis of eimerian infection from three commercial broiler chickens.** LAMP reactions resolved using (A) hydroxynaphthol blue, where a sky blue reaction was positive and a violet to pink reaction was negative, and (B) agarose gel electrophoresis. The intestinal sites sampled were as shown in Table 1 for each parasite species. A = *E. acervulina*, B = *E. brunetti*, Ma = *E. maxima*, Mi = *E. mitis*, N = *E. necatrix*, P = *E. praecox* and T = *E. tenella*. Lane 1 contained the GeneRuler 1Kb DNA ladder. [Please click here to view a larger version of this figure.](#)



**Figure 3. LAMP diagnosis of eimerian infection using pooled samples from three separate commercial broiler chickens.** LAMP reactions resolved using hydroxynaphthol blue, where a sky blue reaction was positive and violet to pink reaction was negative. A = *E. acervulina*, B = *E. brunetti*, Ma = *E. maxima*, Mi = *E. mitis*, N = *E. necatrix*, P = *E. praecox* and T = *E. tenella*. [Please click here to view a larger version of this figure.](#)

Sample site	<i>Eimeria</i> species assay (most likely)
Duodenum (D)	<i>E. acervulina</i> , <i>E. praecox</i>
Jejunum/ileum* (J/I)	<i>E. maxima</i> , <i>E. necatrix</i>
Caeca (C)	<i>E. necatrix</i> , <i>E. tenella</i>
Terminal ileum (TI)	<i>E. brunetti</i> , <i>E. mitis</i>
Pooled sample (P)	<i>E. acervulina</i> , <i>E. brunetti</i> , <i>E. maxima</i> , <i>E. mitis</i> , <i>E. necatrix</i> , <i>E. praecox</i> , <i>E. tenella</i>

**Table 1. Intestinal region-specific selection of candidate *Eimeria* species assays.** The choice of region to be sampled varies for each *Eimeria* species as illustrated in Figure 1. Pooled samples include material collected from all four specific sites which were then combined for DNA preparation.

Primer*	Stock concentration (µM)	Volume (µl)
Water	-	60
Forward Inner Primer (FIP)	100	40
Backward Inner Primer (BIP)	100	40
Forward Outer Primer (F3)	100	10
Backward Outer Primer (B3)	100	10
Loop Forward (LF)	100	20
Loop Backward (LB)	100	20
<b>Total</b>		<b>200</b>

**Table 2. Preparation of a LAMP primer premix.** The components and proportions required to prepare a primer premix for LAMP. Volumes shown are for 100 LAMP reactions. \*Primer identities as shown in the Materials and Barkway *et al* (2011)<sup>18</sup>.

	Stock conc <sup>n</sup>	Final reaction conc <sup>n</sup>	Volume per reaction(µl)
DDW	-	-	10.1
ThermoPol buffer	10 x	1 x	2.5
MgSO <sub>4</sub>	100 mM	2 mM	0.5
Primer mix*	Table 2		2.5
dNTPs	25 mM	400 µM	0.4
Betaine	5 M	1 M	5
Hydroxynaphthol blue	3 mM	120 µM	1
Bst DNA polymerase	8,000 U/ml	8 U	1
<b>Total</b>			<b>23</b>

**Table 3. Preparation of a LAMP reaction mastermix.** \**Eimeria* species-specific.

## Discussion

The *Eimeria* species-specific LAMP assays described in this paper offer a new diagnostic tool kit in support of effective control of coccidia and the disease coccidiosis. The outcomes of eimerian infection can include severe economic loss as well as seriously compromised bird welfare and increased susceptibility to colonisation by zoonotic pathogens<sup>21</sup>. Opportunities to monitor flocks for the occurrence of some, or all *Eimeria* species can provide early warning of a breakdown in anticoccidial control efficacy. Key advantages of LAMP include robust target specificity, resulting from the requirement for six different DNA sequence targets, as well as high sensitivity, boosted by the inclusion of loop primers<sup>13</sup>, although the qualitative, not quantitative nature of LAMP may be considered a limitation. It is not currently possible to discriminate low level parasite escape from routine chemoprophylaxis or live vaccine replication from unchecked eimerian replication. Nonetheless, the technical ease of the protocol and definitive readout offers considerable improvement over the existing specialist and frequently subjective pathology- and morphology-led approaches<sup>6,7</sup>. Each assay may be completed at a cost of ~£0.75 per sample, independent of labour and equipment set up expenses. Thus, LAMP assays are also more cost effective than other molecular diagnostics such as PCR, since they require an isothermal incubation with no need for specialist equipment.

For many years access to *Eimeria* genomic DNA as template has limited the development and application of molecular field diagnostics. The oocyst is the most readily accessible phase of the eimerian lifecycle, but routine DNA extraction requires laboratory facilities<sup>22</sup>. Other, more labile intestinal lifecycle stages require purification prior to DNA preparation to prevent PCR inhibition and a consequent loss of sensitivity<sup>23,24</sup>. The ability to extract eimerian DNA of a quality suitable for LAMP using equipment no more specialised than a microcentrifuge and a water bath, supplemented by inhibitor adsorption using chelex resin, now promotes the wider use of molecular biology in eimerian diagnostics. Intriguingly, the reported detection of quantitative PCR-measurable *Eimeria* DNA in intestinal tissue 20 days after the initiation of parasite infection, 11 days after the last detectable oocyst output, raises the suggestion that LAMP may be used to detect resolved parasite exposure as well as ongoing infection, even after any visible lesions may have been resolved<sup>25</sup>.

The relatively low cost and low technical requirements of LAMP *Eimeria* diagnostics can promote their application in the developing world where other more established approaches may not be available or appropriate. For this to be applicable each assay must be capable of detecting all strains which may be circulating within each region. While understanding of the genetic diversity prevailing among *Eimeria* species is limited<sup>26</sup>, the use of target sequences previously validated for use in quantitative PCR with strains from Africa, Asia, Europe and South America provides some evidence of conservation, supporting the utility of these LAMP assays around the world<sup>10</sup>.

## Disclosures

The authors declare that they have no competing financial interests.

## Acknowledgements

The work carried out in this study was supported in part by the Royal Veterinary College through the student research projects fund, as well as the Biotechnology and Biological Sciences Research Council and the Department for International Development (grant number BB/H009337/2). This manuscript has been assigned the reference PPB\_00795 by the RVC.

## References

1. Chapman, H. D., *et al.* A selective review of advances in coccidiosis research. *Adv Parasitol.* **83**, 93-171 (2013).
2. Shirley, M. W., Smith, A. L., Tomley, F. M. The biology of avian Eimeria with an emphasis on their control by vaccination. *Adv Parasitol.* **60**, 285-330 (2005).
3. Fornace, K. M., *et al.* Occurrence of Eimeria species parasites on small-scale commercial chicken farms in Africa and indication of economic profitability. *PLoS ONE.* **8**, (12), e84254 (2013).
4. Schwarz, R. S., Jenkins, M. C., Klopp, S., Miska, K. B. Genomic analysis of Eimeria spp. populations in relation to performance levels of broiler chicken farms in Arkansas and North Carolina. *J Parasitol.* **95**, (4), 871-880 (2009).
5. Peek, H. W., Landman, W. J. Coccidiosis in poultry: anticoccidial products, vaccines and other prevention strategies. *Vet Q.* **31**, (3), 143-161 (2011).
6. Johnson, J., Reid, W. M. Anticoccidial drugs: lesion scoring techniques in battery and floor-pen experiments with chickens. *Exp Parasitol.* **28**, (1), 30-36 (1970).
7. Haug, A., Gjevre, A. G., Skjerve, E., Kaldhusdal, M. A survey of the economic impact of subclinical Eimeria infections in broiler chickens in Norway. *Avian Pathol.* **37**, (3), 333-341 (2008).
8. Procnier, J., Fernando, M., Barta, J. Species and strain differentiation of Eimeria spp. of the domestic fowl using DNA polymorphisms amplified by arbitrary primers. *Parasitology Research.* **79**, (2), 98-102 (1993).
9. Schnitzler, B. E., Thebo, P. L., Mattsson, J. G., Tomley, F. M., Shirley, M. W. Development of a diagnostic PCR assay for the detection and discrimination of four pathogenic Eimeria species of the chicken. *Avian Pathol.* **27**, (5), 490-497 (1998).
10. Vrba, V., Blake, D. P., Poplstein, M. Quantitative real-time PCR assays for detection and quantification of all seven Eimeria species that infect the chicken. *Vet Parasitol.* **174**, (3-4), 183-190 (2010).
11. Morris, G. M., Gasser, R. B. Biotechnological advances in the diagnosis of avian coccidiosis and the analysis of genetic variation in Eimeria. *Biotechnol Adv.* **24**, (6), 590-603 (2006).
12. Perry, B., Randolph, T., McDermott, J., Sones, K., Thornton, P. *Investing in animal health research to alleviate poverty.* ILRI (International Livestock Research Institute) Nairobi, Kenya (2002).
13. Nagamine, K., Hase, T., Notomi, T. Accelerated reaction by loop-mediated isothermal amplification using loop primers. *Mol Cell Probes.* **16**, (3), 223-229 (2002).
14. Notomi, T., *et al.* Loop-mediated isothermal amplification of DNA. *Nucleic Acids Res.* **28**, (12), E63 (2000).
15. Kaneko, I., *et al.* Detection of enterotoxigenic Clostridium perfringens in meat samples by using molecular methods. *Appl Environ Microbiol.* **77**, (21), 7526-7532 (2011).
16. Karanis, P., *et al.* Development and preliminary evaluation of a loop-mediated isothermal amplification procedure for sensitive detection of cryptosporidium oocysts in fecal and water samples. *Appl Environ Microbiol.* **73**, (17), 5660-5662 (2007).
17. Xue, C., *et al.* Rapid detection of Infectious bursal disease virus by reverse transcription loop-mediated isothermal amplification assay. *J Vet Diagn Invest.* **21**, (6), 841-843 (2009).
18. Barkway, C. P., Pocock, R. L., Vrba, V., Blake, D. P. Loop-mediated isothermal amplification (LAMP) assays for the species-specific detection of Eimeria that infect chickens. *BMC Vet Res.* **7**, (1), 67 (2011).
19. Long, P., Joyner, L., Millard, B., Norton, C. A guide to laboratory techniques used in the study and diagnosis of avian coccidiosis. *Folia Veterinaria Latina.* **6**, (3), 201-217 (1976).
20. Goto, M., Honda, E., Ogura, A., Nomoto, A., Hanaki, K. Colorimetric detection of loop-mediated isothermal amplification reaction by using hydroxy naphthol blue. *BioTechniques.* **46**, (3), 167-172 (2009).
21. Arakawa, A., Baba, E., Fukata, T. Eimeria tenella infection enhances Salmonella typhimurium infection in chickens. *Poult Sci.* **60**, (10), 2203-2209 (1981).
22. Blake, D. P., Smith, A. L., Shirley, M. W. Amplified fragment length polymorphism analyses of Eimeria spp.: an improved process for genetic studies of recombinant parasites. *Parasitol Res.* **90**, (6), 473-475 (2003).
23. Lund, M., Nordentoft, S., Pedersen, K., Madsen, M. Detection of Campylobacter spp. in chicken fecal samples by real-time PCR. *J Clin Microbiol.* **42**, (11), 5125-5132 (2004).
24. Raj, G. D., *et al.* Real-time PCR-based quantification of Eimeria genomes: a method to outweigh underestimation of genome numbers due to PCR inhibition. *Avian Pathol.* **42**, (4), 304-308 (2013).
25. Blake, D. P., Hesketh, P., Archer, A., Shirley, M. W., Smith, A. L. Eimeria maxima: the influence of host genotype on parasite reproduction as revealed by quantitative real-time PCR. *Int J Parasitol.* **36**, (1), 97-105 (2006).
26. Beck, H. P., *et al.* Molecular approaches to diversity of populations of apicomplexan parasites. *Int J Parasitol.* **39**, (2), 175-189 (2009).