

Identification and evaluation of *Lonicera japonica* flos introduced to the Hailuogou area based on ITS sequences and active compounds

Haiyan He^{1,2}, Dan Zhang¹, Jianing Gao^{1,2}, Theis Raaschou Andersen³ and Zishen Mou^{4,5}

¹ Key Laboratory of Mountain Surface Processes and Ecological Regulation, Institute of Mountain Hazards and Environment, Chinese Academy of Sciences, Chengdu, People's Republic of China

² University of Chinese Academy of Sciences, Beijing, People's Republic of China

³ Centre for Applied Research & Development, VIA University College, Horsens, Denmark

⁴ State Environmental Protection Key Laboratory of Synergetic Control and Joint Remediation for Soil & Water Pollution (Chengdu University of Technology), Chengdu, People's Republic of China

⁵ State Key Laboratory of Geohazard Prevention and Geoenvironment Protection, Chengdu, People's Republic of China

ABSTRACT

Lonicera japonica flos (LJF), the dried flower buds of *L. japonica* Thunb., have been used in traditional Chinese herbal medicine for thousands of years. Recent studies have reported that LJF has many medicinal properties because of its antioxidative, hypoglycemic, hypolipidemic, anti-allergic, anti-inflammatory, and antibacterial effects. LJF is widely used in China in foods and healthcare products, and is contained in more than 30% of current traditional Chinese medicine prescriptions. Because of this, many Chinese villages cultivate LJF instead of traditional crops due to its high commercial value in the herbal medicine market. Since 2005, the flower buds of *L. japonica* are the only original LJF parts considered according to the Chinese Pharmacopoeia of the People's Republic of China. However, for historical and commercial reasons, some closely related species of *Lonicera* Linn. continue to be mislabeled and used as LJF. Currently, there are hundreds of commercial varieties of LJF on the market and it is difficult to choose fine LJF varieties to cultivate. In this study, a total of 21 varieties labeled as LJF on the market were planted in the Hailuogou area. In order to choose the optimum variety, internal transcribed spacer (ITS) sequence alignment analysis was used to test whether the 21 varieties were genuine LJF or not. Cluster analysis of active components based on the content of chlorogenic acid and luteoloside in flower buds, stems and leaves was used to evaluate the quality of the varieties. Results demonstrated that four of the varieties were *L. macranthoides* Hand.-Mazz., while the other 17 varieties were *L. japonica*, and genuine LJF. The ITS sequence analysis was proven to be highly effective in identifying LJF and *Lonicerae* flos. Among the 17 *L. japonica* varieties, the amounts of chlorogenic acid and luteoloside in flower buds, stems and leaves were significantly different. Based on the cluster analysis method, the variety H11 was observed to have the highest level of active components, and is therefore recommended for large-scale planting in the Hailuogou area.

Submitted 7 November 2018

Accepted 6 August 2019

Published 3 September 2019

Corresponding author

Dan Zhang, daniezhang@imde.ac.cn

Academic editor

Tatiana Tatarinova

Additional Information and
Declarations can be found on
page 12

DOI 10.7717/peerj.7636

© Copyright
2019 He et al.

Distributed under
Creative Commons CC-BY 4.0

OPEN ACCESS

Subjects Agricultural Science, Biochemistry, Genetics, Plant Science

Keywords *Lonicera japonica* Thumb., ITS sequence, Identification, Chlorogenic acid, Luteoloside, Evaluation

INTRODUCTION

Lonicera japonica flos (LJF, honeysuckle), the dried flower buds of *L. japonica* Thunb. (Caprifoliaceae), have been used in traditional Chinese medicine for thousands of years. Recent studies have found that LJF has many medicinal properties ([Shang et al., 2011](#)) due to its antioxidant ([Hsu et al., 2016](#); [Seo et al., 2012](#); [Dung et al., 2011](#)), hypoglycemic and hypolipidemic ([Wang, Zhao & Liu, 2017](#)), anti-allergic ([Tian et al., 2012](#); [Oku et al., 2011](#)), anti-inflammatory ([Hsu et al., 2016](#); [Lee et al., 2011](#); [Ryu et al., 2010](#)) and antibacterial effects ([Xiong et al., 2013](#); [Han et al., 2014](#)). Prior to 2005, *L. japonica* and three closely related species (*L. hypoglauca* Miq., *L. confunsa* DC. and *L. dasystyla* Rhed.) were described as the original LJF plants in the Pharmacopoeia of the People's Republic of China (Ch.P) ([Ministry of Health of the People's Republic of China, Commission of Pharmacopoeia, 1977, 1985, 1990, 1995](#); [Chinese Pharmacopoeia Commission, 2000](#)). Since 2005, only *L. japonica* has been considered in the Ch.P ([Chinese Pharmacopoeia Commission, 2005, 2010, 2015](#)). However, the dried flower buds of *L. hypoglauca*, *L. confunsa*, *L. fulvotomentosa* Hsu et S.C. Cheng, *L. hypoglauca* Miq. ssp. *Nudiflora* Hsu et H.J. Wang, *L. nubium* Hand.-Mazz., *L. macranthoides* Hand.-Mazz, *L. similis* Hemsl. ([Wang et al., 2014](#); [Hu et al., 2012](#); [Qian et al., 2007](#); [Li et al., 2006](#)) continue to be mislabeled as LJF in China, but are not well distinguished in practical applications.

In recent years, the demand of LJF in the fields of pharmacy ([Shang et al., 2011](#)), cosmetics ([Ning et al., 2012](#)), and health food ([Feng et al., 2018](#); [Li et al., 2014](#); [Wang, Clifford & Sharp, 2008](#)) has increased. Over 30% of current traditional Chinese medicine prescriptions contain LJF, and the commercial value of LJF in herbal medicine markets has increased over 400% in recent years ([Yuan et al., 2012](#)). The economic value of cultivating LJF is much higher than that of traditional crops, and many Chinese villages have started to cultivate LJF instead of traditional crops to increase income. However, commercial varieties can be named independently by the cultivator because of a lack of supervision, resulting in hundreds of commercial varieties of LJF on the market. Thus, it is challenging to choose fine LJF varieties to plant. For cultivars especially, the problem still exists of distinguishing landraces and wild germplasm morphologically from each other.

In the past four decades, several techniques based on molecular markers have been developed to identify and evaluate plant germplasm. Restriction fragment conformation polymorphism (RFLP), randomly amplified polymorphic DNA (RAPD), simple sequence repeat (SSR) and amplified fragment length polymorphism (AFLP) are widely used. Among these methods, RFLP is a co-dominant marker and can detect high polymorphism ([Outram et al., 2014](#)), but it has a strict requirement for DNA purity. The bands obtained are complex and difficult to interpret ([Ren et al., 2017](#)). RAPD is a dominant genetic marker but cannot distinguish heterozygotes from homozygotes, and has poor reproducibility and low reliability ([Nagaoka & Ogihara, 1997](#)). SSR based markers are predominantly co-dominant, but they may have high development costs and can

sometimes generate false-positive (Peakall et al., 1998) or false negative results (Devos et al., 1995). AFLP markers have strong polymorphism, are stable and have reproducible results (Dorji & Yapwattanaphun, 2015). However, AFLP is expensive and requires isotopic testing and high purity of DNA (Ren et al., 2017). Compared with the above-mentioned methods, internal transcribed spacer (ITS) sequence alignment analysis of nrDNA is an ideal molecular marker technique. ITS is highly repetitive with a large number of copies and the length is generally less than 700 bp (including 5.8S rDNA), which is beneficial for amplification, cloning and sequencing (Baldwin et al., 1995; Elder & Turner, 1995). The 18S, 5.8S, 26S rDNA genes are highly conserved and can be amplified and sequenced using universal primers complementary to their sequences (Ghada et al., 2009). The nucleotide sequence changes dramatically, which provides rich phylogenetic information (Schmidt & Schilling, 2000). In addition, ITS analysis is simple and cost-effective. It is widely used in identification and phylogenetic analysis of original plants of Chinese medicinal herbs, such as *Acori Tatarinowii Rhizoma* (dried rhizome of *Acorus tatarinowii* Schott) (Lam et al., 2016), *Corni Fructus* (ripe fruit of *Cornus officinalis* Siebold et Zucc.) (Hou et al., 2013), *Fallopia multiflora* (dried rhizome of *Fallopia multiflora* (Thunb.) Haraldson.) (Zheng et al., 2009), *Pulsatillae radix* (dried root of *Pulsatilla chinensis* (Bge.) Regel) (Shi et al., 2017), and saffron (dried stigmas of *Crocus sativus* L.) (Huang et al., 2015). The nrDNA ITS sequences of *L. japonica* differed significantly from that of related species (Peng et al., 2010; Hu et al., 2012; Wang et al., 2014).

Currently, there are few studies on the identification of LJF commercial varieties, especially in agricultural introduction and planting. In this study, 21 varieties called LJF with a certain market share were introduced to farmers in the Hailuogou area to plant. The yield and quality of the 21 varieties were significantly different. ITS sequence alignment analysis was used to identify the authenticity of the LJF varieties. High-performance liquid chromatography (HPLC) was applied to detect the content of active components (chlorogenic acid and luteoloside) in flower buds, stems and leaves. The Cluster analysis method based on active components was used to evaluate the medicinal value of introduced varieties and in selecting suitable varieties for later large-scale planting.

MATERIALS AND METHODS

Study area

The study area is located in Baozi village, Hailuogou area, Tibetan Autonomous Prefecture of Ganzi, Sichuan Province, P. R. China (Longitude of 102.11E and Latitude of 29.63N). The area is located in the western Qinghai Tibet Plateau climate transition zone and is characterized by a subtropical warm and humid monsoon climate. The annual mean temperature is 12.7 °C and annual mean precipitation is 1,050.3 mm (Wu et al., 2013). The relative humidity is 66% and yearly sunlight hours are 1,161.9 h.

Sampling, DNA extraction, PCR amplification and sequencing

Two-year-old seedlings of 21 varieties (H1–H21) were planted in the study area in September 2014. Samples of young leaves were harvested in October 2015 (Table 1). From each variety, three plant samples that shared the same morphology were collected.

Table 1 GenBank number and sources of test samples and reference sequences in GenBank.

No.	Name	Sources of introduction	GenBank No.	Reference sequence in GenBank
H1	Zhongjin 1#	Fei County, Shandong Province	MG491249	KX394609.1, JQ780991.1, JQ731715.1
H2	Red bud	Fei County, Shandong Province	MG491250	KF160906.1, JQ780986.1, KX394609.1
H3	Mengjin 1#	Pingy County, Shandong Province	MG491251	KX394609.1, JQ780991.1, JQ731712.1
H4	Mengjin 2#	Pingy County, Shandong Province	MG491252	KF160906.1, JQ780986.1, KX394609.1
H5	Mengjin 3#	Pingy County, Shandong Province	MG491253	KX394609.1, JQ780991.1, JQ731715.1
H6	Jizhua flower	Pingy County, Shandong Province	MG491254	KX394609.1, JQ780991.1, JQ731715.1
H7	Jiufeng 1#	Pingy County, Shandong Province	MG491255	JQ780986.1, KX394609.1, KF160906.1
H8	Tefeng 1#	Cangshan County, Shandong Province	MG491256	KX394609.1, JQ780991.1, JQ731715.1
H9	Tefeng 2#	Cangshan County, Shandong Province	MG491257	KX394609.1, JQ780991.1, JQ731715.1
H10	Lufengwang 1#	Linyi City, Shandong Province	MG491266	KF160887.1, JQ731716.1, FJ372922.1
H11	Lufengwang 3#	Linyi City, Shandong Province	MG491258	KX394609.1, JQ780991.1, JQ731715.1
H12	Lufengwang 5#	Linyi City, Shandong Province	MG491259	JQ780986.1, KX394609.1, KF160906.1
H13	Lufengwang 6#	Linyi City, Shandong Province	MG491260	KF160912.1, JQ780990.1, KX394609.1
H14	Jufeng	Linyi City, Shandong Province	MG491261	KX394609.1, JQ780991.1, JQ731715.1
H15	Jinfeng 1#	Fengqiu County, Henan Province	MG491262	KX394609.1, JQ780991.1, JQ731715.1
H16	Shipan Flower	Jianyang City, Sichuan Province	MG491263	KX394609.1, JQ780991.1, JQ731715.1
H17	Muchuan 1#	Muchuan County, Sichuan Province	MG491267	FJ372919.1, KF160915.1, KF160887.1
H18	Muchuan 2#	Muchuan County, Sichuan Province	MG491268	FJ372919.1, KF160915.1, KF160887.1
H19	Muchuan 3#	Muchuan County, Sichuan Province	MG491269	FJ372919.1, KF160915.1, KF160887.1
H20	Xiangman 1#	Nanchong City, Sichuan Province	MG491264	KX394609.1, JQ780991.1, JQ731715.1
H21	Julu 1#	Julu County, Hebei Province	MG491265	KX394609.1, JQ780991.1, JQ731715.1

Note:

The selected reference sequences in GenBank have the highest identity with the sample sequence.

The total genomic DNA was extracted from fresh leaves using a modified CTAB method (Uddin *et al.*, 2014). PCR amplification of DNA was carried out in a 25 μ L volume for all samples, and included 19 μ L 1.1 \times PCR Mix, four μ L DNA (60 ng/ μ L) and two μ L 10 μ mol/L mixed primers with the equal volume mixing universal primers ITS1 (5'-AGAA GTCGTAACAAGGTTTCCGTAGG-3') and ITS4 (5'-TCCTCCGC TTA TTGATA TGC-3') (Wang *et al.*, 2014). The ITS sequence was amplified at 98 $^{\circ}$ C for 2 min followed by five touchdown cycles of 98.0 $^{\circ}$ C for 10 s, 58.4 $^{\circ}$ C for 10 s (every cycle lowered 1 $^{\circ}$ C), 72.0 $^{\circ}$ C for 10 s; and then followed by 25 cycles of 98.0 $^{\circ}$ C for 10 s, 53.4 $^{\circ}$ C for 10 s, 72.0 $^{\circ}$ C for 10 s, and a final extension at 72 $^{\circ}$ C for 10 min. All PCR products were detected by electrophoresis on 2% agarose gel in 0.5 \times TAE buffer, stained with ethidium bromide and imaged using a Gel Imaging System. The PCR amplification products were found to be highly specific and could be sequenced directly. Forward and reverse sequencing was completed by Shanghai Sangon Biotech Corporation. PCR amplification and sequencing were repeated in triplicate.

Determination of active components

For active component analysis, the samples of each variety had three replications with 10 plants per replication collected from April to July 2015. In the current version of

Ch.P (2015), the quality of LJF is primarily determined by the amount of chlorogenic acid and luteoloside content. Determined by the HPLC method, the content of chlorogenic acid should be higher than 1.5% and the content of luteoloside should be higher than 0.050% in dried products (*Chinese Pharmacopoeia Commission, 2015*). HPLC was conducted via a PerkinElmer system (Flexar PDA LC Detector, Totalchrom chromatographic workstation) with an Agela C18 chromatographic column (250 × 4.6 mm, 5 μm).

Data analysis

Forward and reverse sequences were spliced by DNAMAN software. The ITS sequences were aligned with Clustal X 1.83 (*Thompson et al., 1997*). The boundaries of the ITS region (ITS1-5.8S-ITS2) were determined by comparing homology with the aligned sequence previously published in the National Center of Biotechnology Information data base using Basic Local Alignment Search Tool (*Altschul et al., 1990*). The *L. japonica* referenced ITS sequences were [EU240693.1](#), [FJ774983.1](#), and [FJ372911.1](#). The *L. macranthoides* referenced ITS sequences were [FJ372922.1](#), [FJ774984.1](#), and [KF160887.1](#). All the ITS sequences of the 21 samples were submitted to GenBank and GenBank IDs were obtained ([Table 1](#)). *Weigela japonica* Thunb. (GenBank ID: [EU240670.1](#)) was used as the outgroup. Neighbor-Joining (NJ) trees were generated with the NJ method performed on a Kimura-2-parameter distance matrix with the MEGA 6.0 (*Tamura et al., 2013*) and carried out with 2,000 bootstrap replicates. Descriptive statistical analysis, analysis of variance (Duncan's new multiple range test), Hierarchical cluster analysis and K-cluster analysis (*Jiang et al., 2014; Milev et al., 2015*) of active components were performed using SPSS 19.0.

RESULTS

Species identification and variation in ITS sequences

Basic Local Alignment Search Tool found that the ITS sequences of H10, H17, H18, and H19 were highly similar to *L. macranthoides*, based on identities ≥98% similar to the original plant of *Lonicerae* Flos (LF) in the Ch.P (*Chinese Pharmacopoeia Commission, 2015*). The other 17 varieties were highly similar to *L. japonica*, based on identities ≥99% similar. The reference sequences in GenBank are shown in [Table 1](#).

The ITS regions including the 5.8S rDNA gene varied in their overall length from 610 bp (H17 and H19) to 618 bp (H10). The length of ITS1 sequences was 222–230 bp. The length of ITS2 sequence of all varieties was 225 bp. The 5.8S rDNA gene was 163 bp in length and the primary composition was identical in all varieties, reflecting the high conservativeness of 5.8S rDNA. Sequence comparisons (including the 5.8S rDNA gene) of the ITS regions of all varieties revealed a total of 618 nucleotides (excluding indels sites), of which 590 sites were constant, and 27 variable sites. Among variable sites, we determined 19 transitions and eight transversions, as well as 18 parsim-informative sites and nine singleton sites.

In *L. japonica*, ITS sequence analysis found that the ITS sequences of H1, H3, H6, H8, H9, H14, H15, and H20 were exactly identical. In contrast to the ITS sequences of these eight varieties, minor variations in the sequences of the remaining varieties were observed. For example, a deletion was discovered at position 6 of H21; a C-A single

Table 2 Genetic distances of all varieties based on Krma-2-Paramenter distance model.

	H1	H2	H3	H4	H5	H6	H7	H8	H9	H11	H12	H13	H14	H15	H16	H20	H21	H10	H17	H18	H19	
H1																						
H2	0.003																					
H3	0.000	0.003																				
H4	0.003	0.000	0.003																			
H5	0.000	0.003	0.000	0.003																		
H6	0.000	0.003	0.000	0.003	0.000																	
H7	0.002	0.002	0.002	0.002	0.002	0.002																
H8	0.000	0.003	0.000	0.003	0.000	0.000	0.002															
H9	0.000	0.003	0.000	0.003	0.000	0.000	0.002	0.000														
H11	0.002	0.005	0.002	0.005	0.002	0.002	0.003	0.002	0.002													
H12	0.002	0.002	0.002	0.002	0.002	0.002	0.000	0.002	0.002	0.003												
H13	0.003	0.007	0.003	0.007	0.003	0.003	0.005	0.003	0.003	0.002	0.005											
H14	0.000	0.003	0.000	0.003	0.000	0.000	0.002	0.000	0.000	0.002	0.002	0.003										
H15	0.000	0.003	0.000	0.003	0.000	0.000	0.002	0.000	0.000	0.002	0.002	0.003	0.000									
H16	0.008	0.005	0.008	0.005	0.008	0.008	0.007	0.008	0.008	0.010	0.007	0.012	0.008	0.008								
H20	0.000	0.003	0.000	0.003	0.000	0.000	0.002	0.000	0.000	0.002	0.002	0.003	0.000	0.000	0.008							
H21	0.000	0.003	0.000	0.003	0.000	0.000	0.002	0.000	0.000	0.002	0.002	0.003	0.000	0.000	0.008	0.000						
H10	0.022	0.022	0.022	0.022	0.022	0.022	0.023	0.022	0.022	0.020	0.023	0.018	0.022	0.022	0.020	0.022	0.022					
H17	0.025	0.025	0.025	0.025	0.025	0.025	0.027	0.025	0.025	0.027	0.027	0.025	0.025	0.025	0.027	0.025	0.025	0.020				
H18	0.025	0.025	0.025	0.025	0.025	0.025	0.027	0.025	0.025	0.027	0.027	0.025	0.025	0.025	0.027	0.025	0.025	0.020	0.000			
H19	0.025	0.025	0.025	0.025	0.025	0.025	0.027	0.025	0.025	0.027	0.027	0.025	0.025	0.025	0.027	0.025	0.025	0.020	0.000	0.000		

nucleotide polymorphism (SNP) at position 7 of H5; a C-G SNP at position 38 of H16, at position 121 of H2, H4, H7, H12, and H16; a G-A SNP at position 410 and 578 of H16 and H10; and a C-T SNP at position 417 of H2, H4, and H16, at position 459 of H13, and at position 568 of H11 and H13.

In *L. macranthoides*, the ITS sequences of H17, H18, and H19 were exactly identical. In contrast to the ITS sequences of H17, H18, and H19, in H10 we detected seven bp insertion (TCGAAAC) at the start of the ITS1 region; a C-A SNP at position 45 and 122, a T-C SNP at position 60, 182, 213, 214, and 568, and a A-G SNP at position 63, 69, 410, 453, and 601. H10 had A insertion at position 70 of the ITS1 region.

Analysis of the ITS sequences

The intraspecific divergence values (Table 2) of *L. japonica* ranged from 0 to 0.012 (H13 and H16), among which the intraspecific divergence values of H1, H3, H5, H6, H8, H9, H14, H15, H20, and H21 varieties, as well as H2 and H4, H7 and H12, were 0. The intraspecific divergence values of *L. macranthoides* ranged from 0 (H17, H18, and H19) to 0.020 (H10). The interspecific divergence values of *L. japonica* and *L. macranthoides* ranged from 0.018 to 0.027, most of which were greater than the intra-specific divergence values.

The NJ tree of all varieties are shown in Fig.1. Two main groups were identified by sequences with 81% bootstrap value. Group I consisted of 17 *L. japonica* varieties and

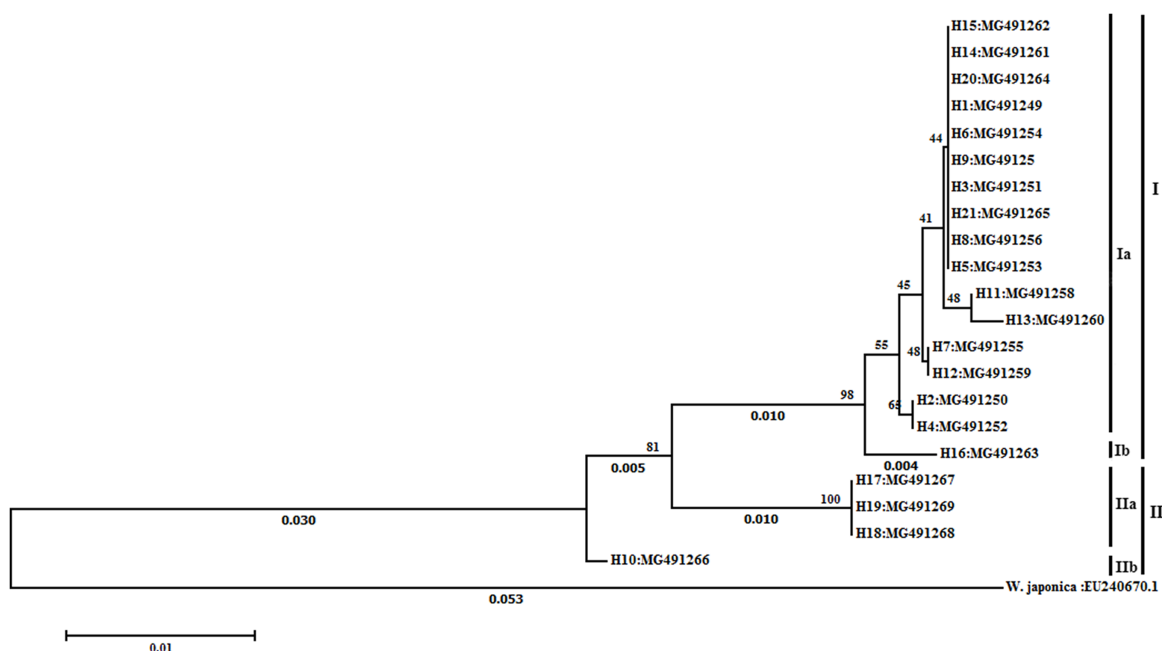


Figure 1 Phylogenetic tree resulted from Neighbor-Joining (NJ) analysis based on ITS sequences. Numerals below branches indicate branch length (hidden if shorter than 0.002). Numerals above branches indicate the percentage of times that the branch was recovered in 2,000 bootstrap replicates. [Full-size !\[\]\(fd7fe780e8fd8eece60268c87d0c3e04_img.jpg\) DOI: 10.7717/peerj.7636/fig-1](https://doi.org/10.7717/peerj.7636/fig-1)

group II consisted of four *L. macranthoides* varieties (H10, H17, H18, and H19). In group I, H16 was separated from the other 16 varieties with 98% bootstrap value. In group II, H10 was separated from H17, H18, and H19.

Active component analysis

The tested flower bud samples were collected in the first year after introduction. Due to the difference of climate and soil characteristics between the varieties' original provenance and the study area, H10 and H19 did not bloom, and H1, H2, H3, H4, H5, H6, H8, H9, H16, H17, H18 barely bloomed. Hence, the active component contents in the 13 varieties were not measured.

The chlorogenic acid and luteoloside contents of LJF flower buds, stems and leaves were significantly different among the distinct LJF varieties (Figs. 2 and 3). In the flower buds, the highest chlorogenic acid content was detected in H11 (3.394%), while H12 had the lowest content (2.630%). The luteoloside contents ranged from 0.071% (H14) to 0.187% (H12). In the stems, the highest and lowest chlorogenic acid contents were detected in LJF cultivars of H13 (1.715%) and H11 (0.617%), respectively, while the highest and lowest luteoloside contents were detected in H11 (0.076%) and H21 (0.017%), respectively. In the leaves, the highest and lowest chlorogenic acid contents were detected in H20 (2.592%) and H14 (1.270%), respectively. The highest and lowest luteoloside contents were detected in H15 (0.545%) and H20 (0.112%), respectively.

Hierarchical cluster analysis was performed based on chlorogenic acid and luteoloside content in *L. japonica* flower buds, stems and leaves (Fig. 4). The results showed that the eight varieties could be divided into three categories when the squared Euclidean

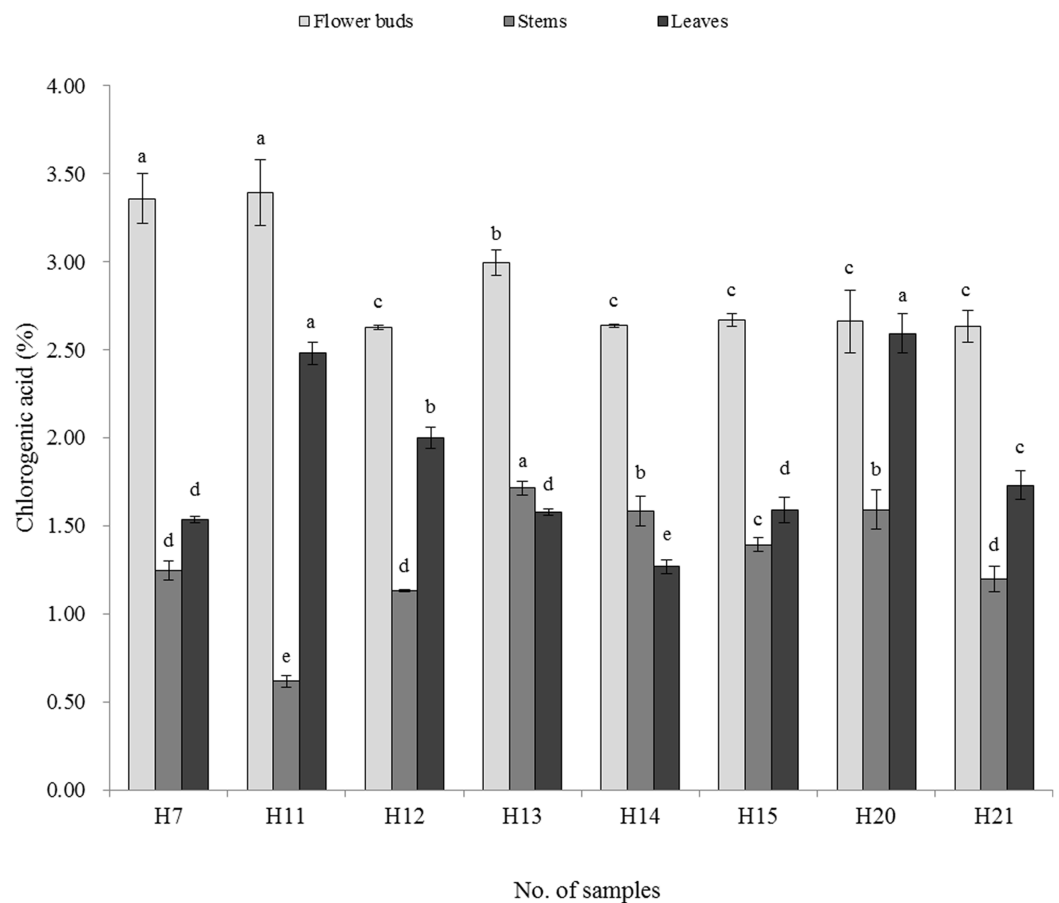


Figure 2 Content of chlorogenic acid of tested material (%). Different letters in the same sampling position indicate significant differences, determined by Duncan's test with $p < 0.05$.

Full-size DOI: 10.7717/peerj.7636/fig-2

distance was 5. One category comprised H11, another comprised H20, and the last category held H7, H12, H13, H14, H15, and H21. The K -cluster analysis results were identical to the hierarchical clustering results (Table 3). One cluster contained H11, another contained H12 and H20, and one contained H7, H13, H14, H15, and H21. Except for the chlorogenic acid content in the stem and luteoloside content in the leaves that were slightly lower than in other varieties, the chlorogenic acid in the flower buds and leaves and luteoloside content in the flower buds and stems of H11 were significantly higher than in other varieties.

DISCUSSION

About 200 species of *Lonicera* L. have been reported all over the world and nearly 50% of them (98 species, five subspecies and 18 variations) have been recorded in China (Hu et al., 2012). Owing to their similar morphological characteristics, it has been challenging to accurately identify the closely related species of *Lonicera* L. (Sun et al., 2011). Many wild *Lonicera* L. species are harvested and used as LJF. *L. japonica*, *L. hypoglauca*, *L. confusa*, and *L. dasystyla*, have been included in the Ch.P as the origin plant of LJF since 1977

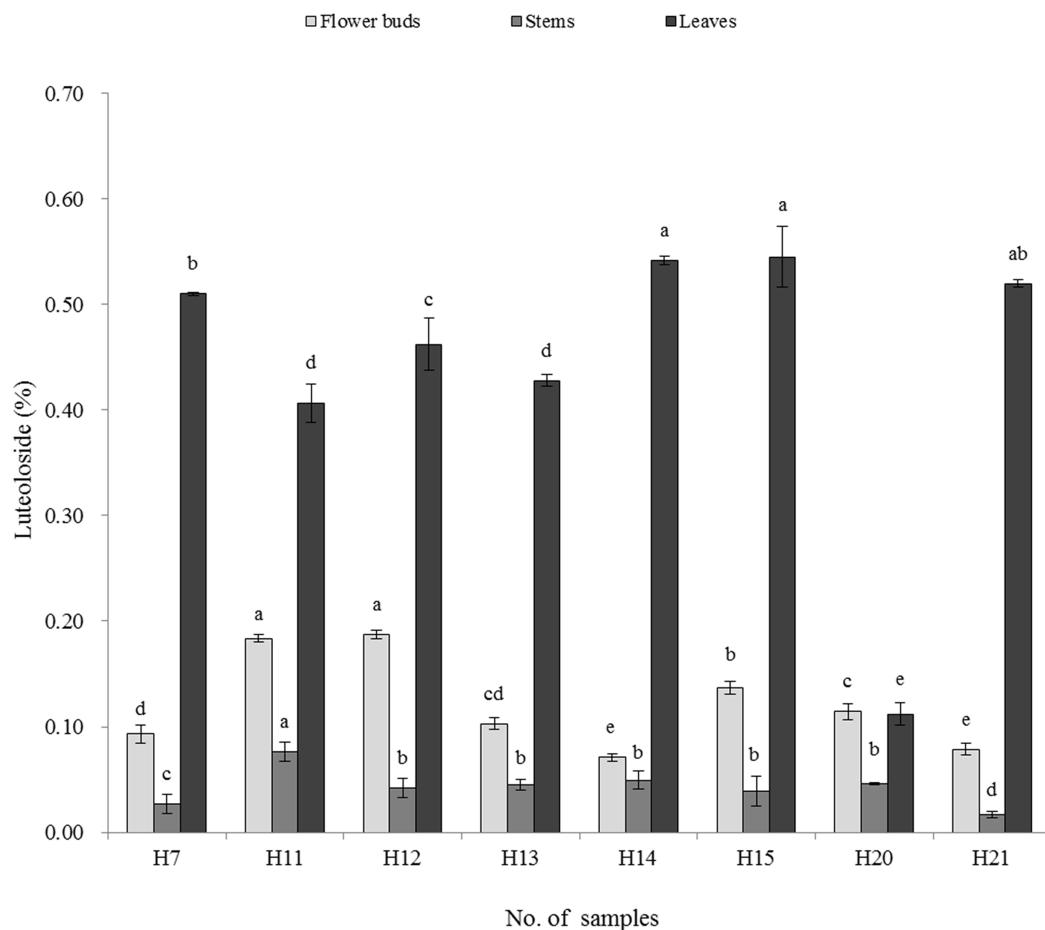


Figure 3 Content of luteoloside of tested material (%). Different letters in the same sampling position indicate significant differences, determined by Duncan's test with $p < 0.05$.

Full-size DOI: 10.7717/peerj.7636/fig-3

(Ministry of Health of the People's Republic of China, Commission of Pharmacopoeia, 1977, 1985, 1990, 1995; Chinese Pharmacopoeia Commission, 2000). In 2005, the flower buds of *L. macranthoides*, *L. hypoglauca*, and *L. confusa* were listed as LF in the Ch.P (Chinese Pharmacopoeia Commission, 2005) and *L. fulvotomentosa* was also included as one of the origin plants of LF in the 2010 and 2015 editions of Ch.P (Chinese Pharmacopoeia Commission, 2010, 2015). *L. japonica* is now recorded as the only origin plant of LJF, but LF is still regarded as LJF in some regions of China. From this study, H17, H18, and H19 are local LF cultivars that are used as LJF in Muchuan County, similar to H10 in Linyi City, implying that people should be more cautious when replacing or blending traditional Chinese medicines.

The accurate identification of a plant's origin is the first step to assure quality of herbal medicines. DNA barcoding, a sequence-based method, is widely used for species identification. It has been found that using the psbA-trnH intergenic spacer as a DNA barcode is an efficient tool for the identification of *L. japonica* and its closely related species (Sun et al., 2011). Such barcoding allows distinguishing between botanical origins of LJF

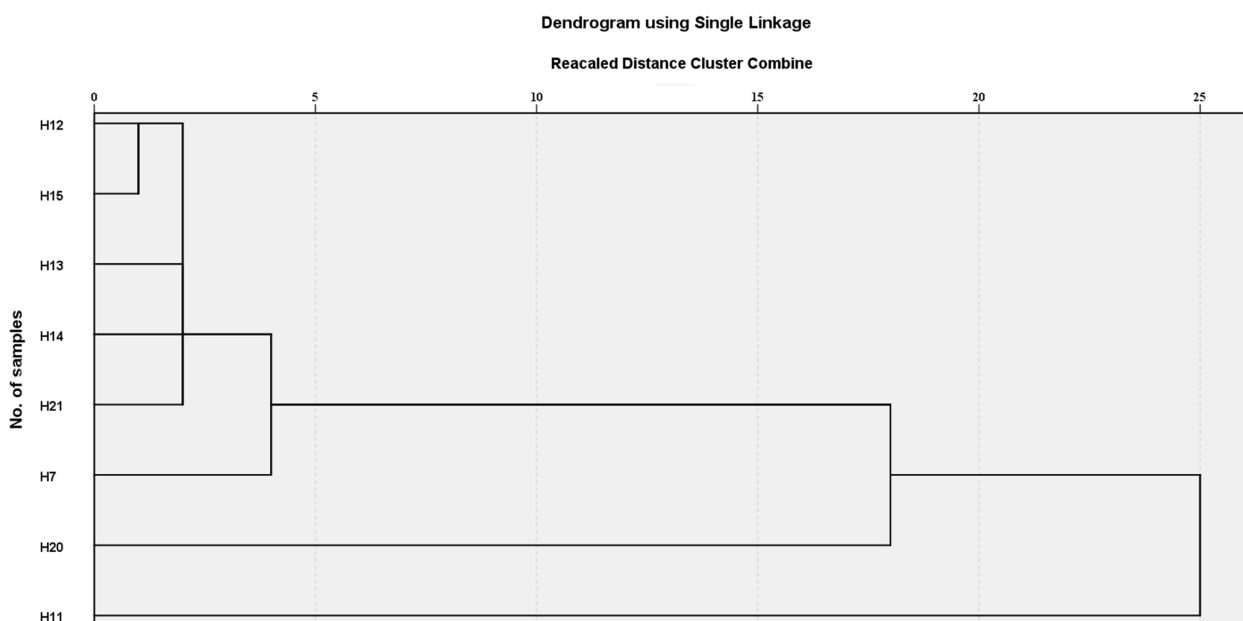


Figure 4 Hierarchical cluster analysis of *L. japonica*. Cluster method is nearest neighbor; interval measure is squared Euclidean distance; standardize: range 0–1. [Full-size](#) DOI: 10.7717/peerj.7636/fig-4

Table 3 Final cluster center of chlorogenic acid and luteoloside and cluster results of *L. japonica*.

Clusters	Chlorogenic acid			Luteoloside			Results
	Flower buds	Stems	Leaves	Flower buds	Stems	Leaves	
1	2.860	1.427	1.541	0.097	0.035	0.509	H7, H13, H14, H15, H21
2	3.394	0.617	2.482	0.184	0.076	0.406	H11
3	2.646	1.362	2.295	0.151	0.044	0.287	H12, H20

and LF, but it can also discriminate multi-origin species of LF ([Sun et al., 2011](#)). Seven candidate DNA barcodes (psbA-trnH, matK, rbcL, rpoC1, ycf5, ITS2, and ITS) from medicinal plant species were compared and it was found that the ITS2 of nrDNA represents the most suitable region to identify medicinal plants and their closely related species ([Chen et al., 2010](#)). Based on ITS sequences in this study, *L. japonica* was identified from *L. macranthoides*, and the genetic relationships between LJF and different *L. japonica* germplasm and *L. macranthoides* were clarified. Similar results have been reported in [Peng et al. \(2010\)](#), [Hu et al. \(2012\)](#) and [Wang et al. \(2014\)](#).

Internal transcribed spacer sequences of 16 LJF germplasm samples except H16 were clustered in group Ia, indicating that these samples may be of the same germplasm, but were named independently. Such a phenomenon is very common in LJF production in China. NJ analysis clearly separates H16 from the other LJF germplasm. H16 is a wild variety, while the other varieties are cultivars. The genetic distances between H16 and the other cultivated varieties (0.005–0.012) are greater than between cultivated varieties (0.000–0.003). It may be the long-term artificial cultivation and selection of LJF leading to such genetic variation. In addition, H2, H4, and H11 have the same phenotypic features

with purple red buds, leaves and stems, while the other 14 varieties are the same with white corolla. Mature leaves of H4 have several small indentations. However, NJ analyses cluster the 16 varieties into one group. This reveals that the morphological classification of *L. japonica* differs from the molecular classification, because the gene controlling the color of the flower buds is not located in the ITS regions. Similar results have been reported by [Maguire & Saenger \(2000\)](#) and [Du et al. \(2015\)](#). Using leaf morphology and rDNA sequence data, [Maguire & Saenger \(2000\)](#) found that *Excoecaria dallachyana* Baillon was not closely related to mangrove species *E. agallocha* L. nor *E. ovalis* Endl, despite the superficial morphological similarities. However, [Du et al. \(2015\)](#) found that the *varietas* of *Salix matsudana* Koidz. had significant morphological differences, but only slight differences were detected at the molecular level. The varying results from distinct classification methods might be related to the morphological traits affected by growth conditions, as well as the selected feature. In *L. macranthoides*, H10 from Shangdong province was distinguished from HJ17, H18, and H19 from Sichuan province. Compared with H17, H18, and H19, the ITS sequence of H10 had multiple nucleotide site mutations. The result is similar to the analysis presented by [Hu et al. \(2012\)](#), in which *L. japonica* samples from four places were detached into two clades by other *Lonicera* L. species. The effects of physical isolation and differing environmental pressures (climate, soil, field management, and so on) may have led to significant variations in DNA sequences.

More than 140 compounds have been isolated and identified from LJF so far, and the main compositions are essential oils, organic acids, and flavones ([Shang et al., 2011](#)), in which the content of chlorogenic acid and luteoloside have been chosen as biomarkers to characterize the quality of LJF ([Chinese Pharmacopoeia Commission, 2015](#)). In this study, the content of chlorogenic acid and luteoloside varied in different *L. japonica* germplasm. The chlorogenic acid content of tested flower buds samples was higher than 1.5% and luteoloside content was higher than 0.05%. The chlorogenic acid and luteoloside contents were higher in red LJF flower (H11) buds than white LJF, similar to results presented in [Yuan et al. \(2012\)](#) and contrary to those presented in [Wang et al. \(2014\)](#). Two varieties (H10 and H19) introduced in the study area did not bloom, and 11 varieties (H1, H2, H3, H4, H5, H6, H8, H9, H16, H17, and H18) barely bloomed, showing the growth vigor differences in LJF and LF. All of the introduced LF varieties showed poor adaptability in the study area. In total, 16 varieties, except H16, were clustered into group Ia, which should be of LJF's same germplasm with different sources. However, the growth vigor (H5 and H8 rarely bloomed) and the active components were significantly different, showing that the LJF varieties with different sources had different quality. Many studies have shown that the quality of LJF varied with habitat and varieties ([Fan et al., 2015](#); [Zhang, Feng & Wang, 2012](#); [Rumalla et al., 2010](#); [Qian et al., 2007](#); [Chen et al., 2007](#)), harvesting time and floral developmental stages ([Jiang et al., 2014](#); [Xiao & Li, 2011](#); [Wang et al., 2009](#)), and processing ([Zhao et al., 2015](#)). This indicates that, in order to reduce economic and time losses, one should be more cautious in large-scale growing of LJF. Studies have found that the chlorogenic acid content in the stems and leaves was lower than in the flower buds, and that the luteoloside content in the stems was lower than that in the flower buds. However, the luteoloside content in the leaves was apparently

higher than that in the flower buds. Similar results have been reported by *Wang et al. (2016)*. Therefore, the stems and leaves also have medicinal value and can be used as a medicinal resource alternative to the flower bud. Notably, the benefits of *L. japonica* stems and leaves have been also reported by other studies (*Ye et al., 2014; Xiong et al., 2013*).

CONCLUSIONS

The provided analysis of ITS sequences led to the successful identification of LF (*L. macranthoide*) and LJF from the mentioned varieties in the Hailuogou area. Based on cluster analysis using chlorogenic acid and luteoloside content in flower buds, stems and leaves, H11 was clustered separately with a high level of active components. H11 is a genuine *L. japonica* variety with a high medicinal value, and it should be introduced for large-scale planting in the Hailuogou area.

ADDITIONAL INFORMATION AND DECLARATIONS

Funding

This work was supported by the National Natural Science Foundation of China (NO. 41571315) and the CAS President's International Fellowship Initiative (PIFI) (NO. 2018VCB0018). The funders had no role in study design, data collection and analysis, decision to publish, or preparation of the manuscript.

Grant Disclosures

The following grant information was disclosed by the authors:
National Natural Science Foundation of China: 41571315.
CAS President's International Fellowship Initiative (PIFI): 2018VCB0018.

Competing Interests

The authors declare that they have no competing interests.

Author Contributions

- Haiyan He conceived and designed the experiments, performed the experiments, analyzed the data, contributed reagents/materials/analysis tools, prepared figures and/or tables, authored or reviewed drafts of the paper, approved the final draft.
- Dan Zhang authored or reviewed drafts of the paper, approved the final draft.
- Jianing Gao performed the experiments, contributed reagents/materials/analysis tools.
- Theis Raaschou Andersen authored or reviewed drafts of the paper.
- Zishen Mou contributed reagents/materials/analysis tools, authored or reviewed drafts of the paper.

Data Availability

The following information was supplied regarding data availability:

Data is available at NCBI: [MG491249](#), [MG491250](#), [MG491251](#), [MG491252](#), [MG491253](#), [MG491254](#), [MG491255](#), [MG491256](#), [MG491257](#), [MG491266](#), [MG491258](#), [MG491259](#),

MG491260, MG491261, MG491262, MG491263, MG491267, MG491268, MG491269, MG491264, MG491265.

Supplemental Information

Supplemental information for this article can be found online at <http://dx.doi.org/10.7717/peerj.7636#supplemental-information>.

REFERENCES

- Altschul SF, Gish W, Miller W, Myers EW, Lipman DJ. 1990. Basic local alignment search tool. *Journal of Molecular Biology* 215(3):403–410 DOI 10.1016/S0022-2836(05)80360-2.
- Baldwin BG, Sanderson MJ, Porter JM, Wojciechowski MF, Campbell CS, Donoghue MJ. 1995. The its region of nuclear ribosomal DNA: a valuable source of evidence on angiosperm phylogeny. *Annals of the Missouri Botanical Garden* 82(2):247–277 DOI 10.2307/2399880.
- Chen C-Y, Qi L-W, Li H-J, Li P, Yi L, Ma H-L, Tang D. 2007. Simultaneous determination of iridoids, phenolic acids, flavonoids, and saponins in Flos Lonicerae and Flos Lonicerae Japonicae by HPLC-DAD-ELSD coupled with principal component analysis. *Journal of Separation Science* 30(18):3181–3192 DOI 10.1002/jssc.200700204.
- Chen SL, Yao H, Han J, Liu C, Song JY, Shi CL, Zhu YJ, Ma XY, Gao T, Pang XH, Luo K, Li Y, Li XW, Jia XC, Lin YL, Leon C. 2010. Validation of the ITS2 region as a novel DNA barcode for identifying medicinal plant species. *PLOS ONE* 5(1):e8613 DOI 10.1371/journal.pone.0008613.
- Chinese Pharmacopoeia Commission. 2000. *Chinese pharmacopoeia of the People's Republic of China*. Vol. 1. Beijing: Chemical Industry Press, 177.
- Chinese Pharmacopoeia Commission. 2005. *Chinese pharmacopoeia of the People's Republic of China*. Vol. 1. Beijing: Chemical Industry Press, 152.
- Chinese Pharmacopoeia Commission. 2010. *Chinese pharmacopoeia of the People's Republic of China*. Vol. 1. Beijing: People's Medical Publishing House, 205–206.
- Chinese Pharmacopoeia Commission. 2015. *Chinese pharmacopoeia of the People's Republic of China*. Vol. 1. Beijing: China Medical Science Press, 221.
- Devos KM, Bryan GJ, Collins AJ, Stephenson P, Gale MD. 1995. Application of two microsatellite sequences in wheat storage proteins as molecular markers. *Theoretical and Applied Genetics* 90(2):247–252 DOI 10.1007/BF00222209.
- Dorji K, Yapwattanaphun C. 2015. Assessment of the genetic variability amongst mandarin (*Citrus reticulata* Blanco) varieties in Bhutan using AFLP markers. *BMC Genetics* 16(1):39 DOI 10.1186/s12863-015-0198-8.
- Du SH, Wang ZS, Li YX, Wang DS, Zhang JG. 2015. Consistency between molecular phylogeny and morphological classification of the *Salix matsudana* Koidz. complex (Salicaceae). *Genetics and Molecular Research* 14(3):8663–8671 DOI 10.4238/2015.July.31.15.
- Dung NT, Bajpai VK, Rahman A, Yoon JI, Kang SC. 2011. Phenolic contents, antioxidant and tyrosinase inhibitory activities of *Lonicera japonica* Thunb. *Journal of Food Biochemistry* 35(1):148–160 DOI 10.1111/j.1745-4514.2010.00461.x.
- Elder JF Jr, Turner BJ. 1995. Concerted evolution of repetitive DNA sequences in eukaryotes. *Quarterly Review of Biology* 70(3):297–320 DOI 10.1086/419073.
- Fan L, Lin CH, Duan WJ, Wang X, Liu JH, Liu F. 2015. Rapid and quantitative determination of 10 major active components in *Lonicera japonica* Thunb. by ultrahigh pressure extraction-HPLC/DAD. *High Pressure Research* 35(1):57–68 DOI 10.1080/08957959.2014.1001384.

- Feng J, Liu YH, Shi XW, Wang QQ. 2018. Potential of hyperspectral imaging for rapid identification of true and false honeysuckle tea leaves. *Journal of Food Measurement and Characterization* 12(3):2184–2192 DOI 10.1007/s11694-018-9834-0.
- Ghada B, Olfa S, Khaled C, Messaoud M, Mohamed M, Mokhtar T, Amel SH. 2009. Sequence analysis of the internal transcribed spacers (ITSs) region of the nuclear ribosomal DNA (nrDNA) in fig cultivars (*Ficus carica* L.). *Scientia Horticulturae* 120(1):34–40 DOI 10.1016/j.scienta.2008.09.013.
- Han J, Lv QY, Jin SY, Zhang TT, Jin SX, Li XY, Yuan HL. 2014. Comparison of anti-bacterial activity of three types of di-O-caffeoylquinic acids in *Lonicera japonica* flowers based on microcalorimetry. *Chinese Journal of Natural Medicines* 12(2):108–113 DOI 10.1016/S1875-5364(14)60017-0.
- Hou D-Y, Song J-Y, Yao H, Han J-P, Pang X-H, Shi L-C, Wang X-C, Chen S-L. 2013. Molecular identification of *Corni fructus* and its adulterants by ITS/ITS2 sequences. *Chinese Journal of Natural Medicines* 11(2):121–127 DOI 10.1016/S1875-5364(13)60038-2.
- Hsu H-F, Hsiao P-C, Kuo T-C, Chiang S-T, Chen S-L, Chiou S-J, Ling X-H, Liang M-T, Cheng W-Y, Houng J-Y. 2016. Antioxidant and anti-inflammatory activities of *Lonicera japonica* Thunb. var. *sempervillosa* Hayata flower bud extracts prepared by water, ethanol and supercritical fluid extraction techniques. *Industrial Crops and Products* 89:543–549 DOI 10.1016/j.indcrop.2016.05.010.
- Hu SQ, Dong GL, Chen XM, Huang LL, Yang X, Tong W, Bai LH. 2012. ITS sequence-based identification and utilization evaluation of “Nanjiang” (*Lonicera similis* Hemsl.), a local cultivar in Sichuan, China. *Genetic Resources and Crop Evolution* 59(4):547–555 DOI 10.1007/s10722-011-9703-8.
- Huang W-J, Li F-F, Liu Y-J, Long C-L. 2015. Identification of *Crocus sativus* and its adulterants from chinese markets by using DNA barcoding technique. *Iranian Journal of Biotechnology* 13(1):36–42 DOI 10.15171/ijb.1034.
- Jiang M, Han YQ, Zhou MG, Zhao HZ, Xiao X, Hou YY, Gao J, Bai G, Luo GA. 2014. The screening research of anti-inflammatory bioactive markers from different flowering phases of Flos *Lonicerae japonicae*. *PLOS ONE* 9(5):e96214 DOI 10.1371/journal.pone.0096214.
- Lam KY-C, Ku C-F, Wang H-Y, Chan GK-L, Yao P, Lin H-Q, Dong TT-X, Zhang H-J, Tsim KW-K. 2016. Authentication of *Acori Tatarinowii* Rhizoma (*Shi Chang Pu*) and its adulterants by morphological distinction, chemical composition and ITS sequencing. *Chinese Medicine* 11(1):41 DOI 10.1186/s13020-016-0113-x.
- Lee H, Lee D, Kim Y, Lee G, Kim SJ, Jung S, Jung H, Bae H. 2011. Lipopolysaccharide induced lung inflammation is inhibited by *Lonicera japonica*. *Molecular & Cellular Toxicology* 7(1):87–93 DOI 10.1007/s13273-011-0012-2.
- Li J, Jin S, Zu Y-G, Luo M, Wang W, Zhao C-J, Fu Y-J. 2014. Rapid preparative extraction and determination of major organic acids in honeysuckle (*Lonicera japonica* Thunb.) tea. *Journal of Food Composition and Analysis* 33(2):139–145 DOI 10.1016/j.jfca.2013.12.007.
- Li FM, Yuan B, Xiong ZL, Lu XM, Qin F, Chen HS, Liu ZG. 2006. Fingerprint analysis of Flos *Lonicerae japonicae* using binary HPLC profiling. *Biomedical Chromatography* 20(6–7):634–641 DOI 10.1002/bmc.678.
- Maguire TL, Saenger P. 2000. The taxonomic relationships within the genus *Excoecaria* L. (euphorbiaceae) based on leaf morphology and rDNA sequence data. *Wetlands Ecology and Management* 8(1):19–28 DOI 10.1023/A:1008407009397.
- Milev M, Nikolova K, Ivanova I, Dobрева M. 2015. Usage of K-cluster and factor analysis for grouping and evaluation the quality of olive oil in accordance with physico-chemical parameters.

- 41st International Conference Applications of Mathematics in Engineering and Economics (AMEE'15), Sozopol, Bulgaria.
- Ministry of Health of the People's Republic of China, Commission of Pharmacopoeia. 1977.** *Chinese pharmacopoeia of the People's Republic of China*. Vol. 1. Beijing: People's Medical Publishing House, 363.
- Ministry of Health of the People's Republic of China, Commission of Pharmacopoeia. 1985.** *Chinese pharmacopoeia of the People's Republic of China*. Vol. 1. Beijing: People's Medical Publishing House, 187.
- Ministry of Health of the People's Republic of China, Commission of Pharmacopoeia. 1990.** *Chinese pharmacopoeia of the People's Republic of China*. Vol. 1. Beijing: People's Medical Publishing House, 192–193.
- Ministry of Health of the People's Republic of China, Commission of Pharmacopoeia. 1995.** *Chinese pharmacopoeia of the People's Republic of China*. Vol. 1. Beijing: People's Medical Publishing House, 189–190.
- Nagaoka T, Ogihara Y. 1997.** Applicability of inter-simple sequence repeat polymorphisms in wheat for use as DNA markers in comparison to RFLP and RAPD markers. *Theoretical and Applied Genetics* **94**(5):597–602 DOI [10.1007/s001220050456](https://doi.org/10.1007/s001220050456).
- Ning W, Peng X, Ma LY, Cui L, Lu XP, Wang J, Tian JK, Li XM, Wang W, Zhang L. 2012.** Enhanced secondary metabolites production and antioxidant activity in postharvest *Lonicera japonica* Thunb. in response to UV radiation. *Innovative Food Science & Emerging Technologies* **13**:231–243 DOI [10.1016/j.ifset.2011.10.005](https://doi.org/10.1016/j.ifset.2011.10.005).
- Oku H, Ogawa Y, Iwaoka E, Ishiguro K. 2011.** Allergy-preventive effects of chlorogenic acid and iridoid derivatives from flower buds of *Lonicera japonica*. *Biological & Pharmaceutical Bulletin* **34**(8):1330–1333 DOI [10.1248/bpb.34.1330](https://doi.org/10.1248/bpb.34.1330).
- Outram MA, Jones EE, Jaspers MV, Ridgway HJ. 2014.** Development of a PCR-RFLP method to distinguish species within the *Ilyonectria macrodidyma* complex. *New Zealand Plant Protection* **67**:151–156.
- Peakall R, Gilmore S, Keys W, Morgante M, Rafalski A. 1998.** Cross-species amplification of soybean (*Glycine max*) simple sequence repeats (SSRs) within the genus and other legume genera: implications for the transferability of SSRs in plants. *Molecular Biology and Evolution* **15**(10):1275–1287 DOI [10.1093/oxfordjournals.molbev.a025856](https://doi.org/10.1093/oxfordjournals.molbev.a025856).
- Peng X, Li W, Wang W, Bai G. 2010.** Identification of *Lonicera japonica* by PCR-RFLP and allele-specific diagnostic PCR based on sequences of internal transcribed spacer regions. *Planta Medica* **76**(5):497–499 DOI [10.1055/s-0029-1186235](https://doi.org/10.1055/s-0029-1186235).
- Qian ZM, Li HJ, Li P, Chen J, Tang D. 2007.** Simultaneous quantification of seven bioactive components in caulis *Lonicerae japonicae* by high performance liquid chromatography. *Biomedical Chromatography* **21**(6):649–654 DOI [10.1002/bmc.803](https://doi.org/10.1002/bmc.803).
- Ren MY, Chen YJ, Zhang D, Du LS, Liu F, Guan X, Zhang YD. 2017.** Application and research progress of inter-simple sequence repeat (ISSR) marker in medicinal plants. *Biotechnology Bulletin* **33**:63–69 DOI [10.13560/j.cnki.biotech.bull.1985.2017.04.008](https://doi.org/10.13560/j.cnki.biotech.bull.1985.2017.04.008).
- Rumalla CS, Avula B, Zhao J, Smillie TJ, Khan IA. 2010.** Quantitative determination of phenolic acids in *Lonicera japonica* Thunb. by high performance thin layer chromatography. *Planta Medica* **76**(5):38–47 DOI [10.1055/s-0030-1251796](https://doi.org/10.1055/s-0030-1251796).
- Ryu KH, Rhee HI, Kim JH, Yoo H, Lee BY, Um KA, Kim K, Nou JY, Lim KM, Chung JH. 2010.** Anti-inflammatory and analgesic activities of SKLJI, a highly purified and injectable herbal extract of *Lonicera japonica*. *Bioscience, Biotechnology, and Biochemistry* **74**(10):2022–2028 DOI [10.1271/bbb.100279](https://doi.org/10.1271/bbb.100279).

- Schmidt GJ, Schilling EE. 2000. Phylogeny and biogeography of *Eupatorium* (Asteraceae: Eupatorieae) based on nuclear ITS sequence data. *American Journal of Botany* 87(5):716–726 DOI 10.2307/2656858.
- Seo ON, Kin GS, Park S, Lee JH, Kim YH, Lee WS, Lee SJ, Kim CY, Jin JS, Choi AK, Shin SC. 2012. Determination of polyphenol components of *Lonicera japonica* Thunb. using liquid chromatography–tandem mass spectrometry: contribution to the overall antioxidant activity. *Food Chemistry* 134(1):572–577 DOI 10.1016/j.foodchem.2012.02.124.
- Shang XF, Pan H, Li MX, Miao XL, Ding H. 2011. *Lonicera japonica* Thunb.: ethnopharmacology, phytochemistry and pharmacology of an important traditional Chinese medicine. *Journal of Ethnopharmacology* 138(1):1–21 DOI 10.1016/j.jep.2011.08.016.
- Shi YH, Zhao MM, Yao H, Yang P, Xin TY, Li B, Sun W, Chen SL. 2017. Rapidly discriminate commercial medicinal *Pulsatilla chinensis* (Bge.) regel from its adulterants using ITS2 barcoding and specific PCR-RFLP assay. *Scientific Reports* 7(1):40000 DOI 10.1038/srep40000.
- Sun ZY, Gao T, Yao H, Shi LC, Zhu YZ, Chen SL. 2011. Identification of *Lonicera japonica* and its related species using the DNA barcoding method. *Planta Medica* 77(3):301–306 DOI 10.1055/s-0030-1250324.
- Tamura K, Stecher G, Peterson D, Filipski A, Kumar S. 2013. MEGA6: molecular evolutionary genetics analysis version 6.0. *Molecular Biology and Evolution* 30(12):2725–2729 DOI 10.1093/molbev/mst197.
- Thompson JD, Gibson TJ, Plewniak F, Jeanmougin F, Higgins DG. 1997. The clustal_x windows interface: flexible strategies for multiple sequence alignment aided by quality analysis tools. *Nucleic Acids Research* 25(24):4876–4882 DOI 10.1093/nar/25.24.4876.
- Tian J, Che HL, Ha D, Wei YP, Zheng SY. 2012. Characterization and anti-allergic effect of a polysaccharide from the flower buds of *Lonicera japonica*. *Carbohydrate Polymers* 90(4):1642–1647 DOI 10.1016/j.carbpol.2012.07.044.
- Uddin MS, Sun WL, He XH, Teixeira da Silva JA, Cheng Q. 2014. An improved method to extract DNA from mango *Mangifera indica*. *Biologia* 69(2):133–138 DOI 10.2478/s11756-013-0311-2.
- Wang Z, Clifford MN, Sharp P. 2008. Analysis of chlorogenic acids in beverages prepared from Chinese health foods and investigation, in vitro, of effects on glucose absorption in cultured caco-2 cells. *Food Chemistry* 108(1):369–373 DOI 10.1016/j.foodchem.2007.10.083.
- Wang YD, He Y, Dai Z, Kang S, Zhang J, Ma S-C. 2016. A comparative study on bioactive constituents in different parts of *Lonicera japonica* determined by HPLC-ESI-MSn. *Journal of Asian Natural Products Research* 18(10):988–1003 DOI 10.1080/10286020.2016.1205039.
- Wang L-M, Li M-T, Yan Y-Y, Ao M-Z, Wu G, Yu L-J. 2009. Influence of flowering stage of *Lonicera japonica* Thunb. on variation in volatiles and chlorogenic acid. *Journal of the Science of Food and Agriculture* 89(6):953–957 DOI 10.1002/jsfa.3537.
- Wang QX, Quan QM, Zhou XL, Zhu YG, Lan YL, Li S, Yu Y, Cheng Z. 2014. A comparative study of *Lonicera japonica*, with related species: morphological characteristics, ITS sequences and active compounds. *Biochemical Systematics and Ecology* 54:198–207 DOI 10.1016/j.bse.2014.02.002.
- Wang DY, Zhao XM, Liu YL. 2017. Hypoglycemic and hypolipidemic effects of a polysaccharide from flower buds of *Lonicera japonica* in streptozotocin-induced diabetic rats. *International Journal of Biological Macromolecules* 102:396–404 DOI 10.1016/j.ijbiomac.2017.04.056.
- Wu Y-H, Li W, Zhou J, Cao Y. 2013. Temperature and precipitation variations at two meteorological stations on eastern slope of Gongga Mountain, SW China in the past two decades. *Journal of Mountain Science* 10(3):370–377 DOI 10.1007/s11629-013-2328-y.

- Xiao WP, Li J. 2011.** Extraction and quantitative determination of chlorogenic acid from Flos *Lonicerae Japonicae*. *Medicinal Plant* **2(11)**:58–60 DOI [10.4268/cjcm20161911](https://doi.org/10.4268/cjcm20161911).
- Xiong J, Li S, Wang W, Hong Y, Tang K, Luo Q. 2013.** Screening and identification of the antibacterial bioactive compounds from *Lonicera japonica* Thunb. leaves. *Food Chemistry* **138(1)**:327–333 DOI [10.1016/j.foodchem.2012.10.127](https://doi.org/10.1016/j.foodchem.2012.10.127).
- Ye J, Su J, Chen KY, Liu H, Yang X, He YJ, Zhang WD. 2014.** Comparative investigation on chemical constituents of flower bud, stem and leaf of *Lonicera japonica* Thunb. by HPLC-DAD-ESI-MS/MS and GC-MS. *Journal of Analytical Chemistry* **69(8)**:777–784 DOI [10.1134/S1061934814080036](https://doi.org/10.1134/S1061934814080036).
- Yuan Y, Song LP, Li MH, Liu GM, Chu YN, Ma LY, Zhou YY, Wang X, Gao W, Qin SS, Yu J, Wang XM, Huang LQ. 2012.** Genetic variation and metabolic pathway intricacy govern the active compound content and quality of the Chinese medicinal plant *Lonicera japonica* thunb. *BMC Genomics* **13(1)**:195 DOI [10.1186/1471-2164-13-195](https://doi.org/10.1186/1471-2164-13-195).
- Zhang JH, Feng BB, Wang XC. 2012.** RP-HPLC determination on the content of chlorogenic acid in Flos *Lonicerae Japonicae* and Flos *Lonicerae* from different producing areas. *Medicinal Plant* **5(1)**:163–168 DOI [10.1002/bdd.2510050209](https://doi.org/10.1002/bdd.2510050209).
- Zhao JP, Wang M, Avula B, Zhong LY, Song ZH, Xu QM, Li SX, Khan IA. 2015.** Effect of processing on the traditional chinese herbal medicine Flos *Lonicerae*: an NMR-based chemometric approach. *Planta Medica* **81(9)**:754–764 DOI [10.1055/s-0035-1546081](https://doi.org/10.1055/s-0035-1546081).
- Zheng C-J, Zhao S-J, Zhao Z-H, Guo J. 2009.** Molecular authentication of the traditional medicinal plant *Fallopia multiflora*. *Planta Medica* **75(8)**:870–872 DOI [10.1055/s-0029-1185382](https://doi.org/10.1055/s-0029-1185382).