



BRAZILIAN JOURNAL
OF MEDICAL AND BIOLOGICAL RESEARCH

www.bjournal.com.br

ISSN 0100-879X
Volume 45 (7) 565-680 July 2012

CLINICAL INVESTIGATION

Braz J Med Biol Res, July 2012, Volume 45(7) 617-624

doi: 10.1590/S0100-879X2012007500070

Prognostic significance of snail expression in hilar cholangiocarcinoma

Dalu Kong, Jun Liang, Rong Li, Shihai Liu, Jigang Wang, Kejun Zhang and Dong Chen

The Brazilian Journal of Medical and Biological Research is partially financed by



Ministério da Ciência e Tecnologia



Ministério da Educação



Institutional Sponsors



Explore High - Performance MS Orbitrap Technology In Proteomics & Metabolomics



All the contents of this journal, except where otherwise noted, is licensed under a [Creative Commons Attribution License](http://creativecommons.org/licenses/by-nc/4.0/)

Prognostic significance of snail expression in hilar cholangiocarcinoma

Dalu Kong¹, Jun Liang², Rong Li¹, Shihai Liu³, Jigang Wang²,
Kejun Zhang⁴ and Dong Chen⁴

¹Department of Hepatobiliary Surgery, Tianjin Medical University Cancer Institute and Hospital, Hexi District, Tianjin, China

²Department of Oncology, Affiliated Hospital of Medical College, Qingdao University, Qingdao, Shandong Province, China

³Department of Laboratory Center, Affiliated Hospital of Medical College, Qingdao University, Qingdao, Shandong Province, China

⁴Department of General Surgery, Affiliated Hospital of Medical College, Qingdao University, Qingdao, Shandong Province, China

Abstract

Many patients with hilar cholangiocarcinoma (HC) have a poor prognosis. Snail, a transcription factor and E-cadherin repressor, is a novel prognostic factor in many cancers. The aim of this study was to evaluate the relationship between snail and E-cadherin protein expression and the prognostic significance of snail expression in HC. We examined the protein expression of snail and E-cadherin in HC tissues from 47 patients (22 males and 25 females, mean age 61.2 years) using immunohistochemistry and RT-PCR. Proliferation rate was also evaluated in the same cases by the MIB1 index. High, low and negative snail protein expression was recorded in 18 (38%), 17 (36%), and 12 (26%) cases, respectively, and 40.4% (19/47) cases showed reduced E-cadherin protein expression in HC samples. No significant correlation was found between snail and E-cadherin protein expression levels ($P = 0.056$). No significant correlation was found between snail protein expression levels and gender, age, tumor grade, vascular or perineural invasion, nodal metastasis and invasion, or proliferative index. Cancer samples with positive snail protein expression were associated with poor survival compared with the negative expresser groups. Kaplan-Meier curves comparing different snail protein expression levels to survival showed highly significant separation ($P < 0.0001$, log-rank test). With multivariate analysis, only snail protein expression among all parameters was found to influence survival ($P = 0.0003$). We suggest that snail expression levels can predict poor survival regardless of pathological features and tumor proliferation. Immunohistochemical detection of snail protein expression levels in routine sections may provide the first biological prognostic marker.

Key words: Hilar cholangiocarcinoma; Prognostic marker; Snail; E-cadherin; Immunohistochemistry

Introduction

Most patients with hilar cholangiocarcinoma (HC) are difficult to treat and have an unfavorable prognosis. Complete surgical resection of HC is the only method to improve the cure rate of these patients. However, many patients with HC treated by curative resection have a poor outcome (1-3). Thus, the search for a prognosis factor is justified for the treatment of patients with HC.

Epithelial-mesenchymal transition (EMT) is a complex stepwise phenomenon that occurs during embryonic

development and tumor progression, and that also has a crucial role in chronic inflammatory and fibrogenic disease (4). EMT is characterized by the disruption of intercellular junctions, replacement of apical-basolateral polarity with front-to-back polarity and acquisition of migratory and invasive phenotypes. It is a critical early event for the invasion and metastasis of many carcinomas (5). The loss of E-cadherin is the hallmark of EMT. Several transcription factors have been implicated in the transcriptional repression of E-cadherin, including zinc-finger proteins of the snail/

Correspondence: Dong Chen and Kejun Zhang, Department of General Surgery, Affiliated Hospital of Medical College, Qingdao University, No. 16, Jiangsu Road, Qingdao, Shandong Province, 266003 China. Fax: +86-532-829-13054. E-mail: chendong.sdqd@yahoo.com.cn and zjdx2008@126.com

Received June 9, 2011. Accepted April 13, 2012. Available online May 11, 2012. Published July 2, 2012.

slug family, Twist, ZEB1, SIP1 and the basic helix-loop-helix factor E12/E47 (6,7). Snail was the first to be discovered (8) and is the most important transcriptional repressor of E-cadherin (9).

Snail was identified in *Drosophila* as a suppressor of the transcription of shotgun (an E-cadherin homologue) in the control of embryogenesis (10). Snail has a central role in morphogenesis since it is essential for the formation of the mesoderm and neural crest, which requires large-scale cell movements in organisms ranging from flies to mammals. The absence of snail is lethal because of severe defects at the gastrula stage during development (11). Snail has a fundamental role in EMT and breast cancer metastasis by suppressing E-cadherin expression. In fact, overexpression of snail was recently found in both epithelial and endothelial cells of invasive breast cancer but was undetectable in normal breast tissue (12,13). The expression of snail in breast carcinomas is associated with metastasis, tumor recurrence and poor prognosis (14). Snail is also up-regulated in ovarian carcinomas (15), melanomas (16), oral squamous carcinomas (17), and hepatocellular carcinomas (18), being also associated with metastasis and a poor prognosis (14-18).

The expression of slug, a protein in the snail family, is a novel prognostic marker for human intrahepatic cholangiocarcinoma with lymph node metastasis (19). In the present study, we analyzed the expression of snail by immunohistochemistry in 47 resected human HC specimens and its relationship with E-cadherin. The expression of snail was analyzed with respect to the main pathological prognostic variables of HC, proliferation index and overall survival.

Material and Methods

Patients and tissue samples

Formalin-fixed and paraffin-embedded samples from 47 patients (22 males and 25 females) with primary HC were obtained from the Hepatobiliary Surgery Center, Tianjin Medical University Cancer Institute and Hospital, from 2000 to 2005. The mean age of the patients was 61.2 years. All tumors were diagnosed histologically, graded, and defined as moderately differentiated (grade 2; N = 29) or poorly differentiated (grade 3; N = 18). Tumors were also grouped according to the presence (N = 15) or absence (N = 32) of neoplastic vascular thrombosis and the presence (N = 16) or absence (N = 31) of neoplastic perineural invasion (Table 1). Follow-up ranged from 1 to 60 months from the date of surgery (mean, 13.1 months). The 47 patients did not receive postoperative adjuvant therapy, such as chemotherapy, radiotherapy or any other treatment after surgical resection. They were all submitted to the same therapeutic program after resection. There was no evidence of predisposing conditions such as hepatolithiasis and primary sclerosing cholangitis, a serious structural disease in these cases. The Ethics Committee of the Tianjin Medical University Cancer Institute and Hospital approved the study and all patients

gave written informed consent to participate.

Immunohistochemistry

Four-micrometer tissue sections were cut, placed on silane-pretreated slides, deparaffinized, and rehydrated through graded alcohols. Antigen retrieval was performed by microwave heating at high power (750 W) in 10 mM sodium citrate buffer, pH 6, for 4 cycles of 5 min each. Slides were then allowed to cool for 30 min prior to incubation with the snail monoclonal antibody (Santa Cruz Biotechnology, USA) diluted 1:200, the E-cadherin monoclonal antibody (Santa Cruz Biotechnology) diluted 1:200, or the anti-PAN monoclonal antibody (clone MIB1; Biogenex, USA) diluted 1:50 for 1 h at room temperature. Staining was performed with the Envision monoclonal system (Dako, USA) and the reaction was developed with diaminobenzidine. Slides were counterstained with Mayer's hematoxylin and mounted. Non-immune mouse serum was used as negative control. Lymphocytes were used as the internal positive control for snail. Immunohistochemical staining of snail was defined as detectable immunoreactions in perinuclear region and/or cytoplasm (20). Snail expression was considered to be negative when no more than 1% of the cells were positive, low when 1 to 49% of the cells were positive, and high when more than 50% of the cells were positive. Expression of E-cadherin was compared between malignant cells and normal epithelial cells located distant from the tumor. Tumor cells that stained as strongly as normal epithelial cells were considered to have preserved expression, whereas those that exhibited weaker staining patterns than normal epithelial cells or did not stain at all were considered to have reduced expression (21).

RNA extraction and RT-PCR analysis

Total RNA was isolated with Trizol reagent (Invitrogen, USA). RNA (2 µg) was reverse transcribed, and 2 µL cDNA was amplified as follows: snail = denaturation at 94°C for 60 s; annealing at 58°C for 30 s, extension at 72°C for 60 s, followed by 25 cycles, forward primer 5'-gaattcatgccgcgctccttctctgcaag-3', and reverse primer 5'-gcatgctcagtgtgccacacagcagcca-3'. E-cadherin = denaturation at 94°C for 60 s, annealing at 60°C for 30 s, biognostic extension at 72°C for 60 s, followed by 28 cycles, forward primer 5'-ttcagttccgaggtctacac-3', and reverse primer 5'-gtctctgtggtgatgcccgg-3'. β-actin = 25 cycles at 94°C for 1 min, 53°C for 30 s, and 72°C for 1 min, forward primer 5'-atctggcacaccttctacaatgagctg-3', and reverse primer 5'-cgtcactactcctgctgctgatccacatctgc-3'. All oligonucleotide primers were designed and synthesized by Takara (China), and the expression of β-actin mRNA was used as an internal control. The β-actin band on the gel acted as a standard band, and the density of snail and E-cadherin was evaluated by expressing their density relative to the β-actin standard band by densitometry. Thus, densitometry was performed on all gels and each signal was normalized to the correspond-

ing β -actin signal using the Quantity One Image Analysis software (Biorad Laboratory, USA).

Statistical analysis

Survival times were calculated from the date of initial diagnosis. Associations between the relative risk of fatality and the various categories of single prognostic variables were evaluated according to Cox's proportional hazard regression model for censored data after dummy code transformation of the predictor. Survival curves were computed using the Kaplan-Meier product-limit method and compared using the log-rank test. Data are reported as means \pm SD for three replicate assays. Differences between groups were assessed by ANOVA or the *t*-test. A P value of <0.05 was considered to indicate statistical significance.

Results

Snail and E-cadherin protein is expressed in hilar cholangiocarcinoma samples

Immunostaining for the snail protein was always cytoplasmic, homogeneously distributed and with similar levels of intensity. In HC tissues, snail protein was localized in both neoplastic cells and fibroblastic cells of tumor desmoplastic reaction. The 47 HC samples showed a heterogeneous pattern of positivity for snail expression in terms of the percentage of cells displaying clear-cut cytoplasmic

staining. Twelve of 47 (26%) HC samples showed negative snail expression (Figure 1A), 17 of 47 (36%) samples showed low snail expression levels (Figure 1B), and 18 of 47 (38%) samples showed high expression levels (Figure 1C). Among the samples with high snail expression levels, 10 samples were grade 2 and 8 samples were grade 3. Among the samples with low expression levels, 12 were grade 2 and 5 were grade 3 (Table 1). Snail expression levels did not significantly correlate with gender, age, tumor grade, histological grade, tumor location, nodal metastasis and invasion, and vascular or perineural invasion (Table 1). E-cadherin expression level in HC samples was characterized by patterns with membrane staining (Figure 1D-F). Immunohistochemical staining revealed that 40.4% (19/47) of the HC samples showed reduced E-cadherin expression levels (Figure 1D) and 59.6% (28/47) showed preserved E-cadherin expression levels (Figure 1E,F). No statistically significant correlations were found between snail and E-cadherin expression levels ($P = 0.056$; Table 2). RT-PCR analysis of snail mRNA and E-cadherin mRNA showed the same results as immunohistochemical staining (Figure 2).

Snail expression and its correlation with the MIB1 proliferation index

The MIB1 labeling index was assessed in the HC of 45 patients, with 37 (82.2%) displaying a low MIB1 index,

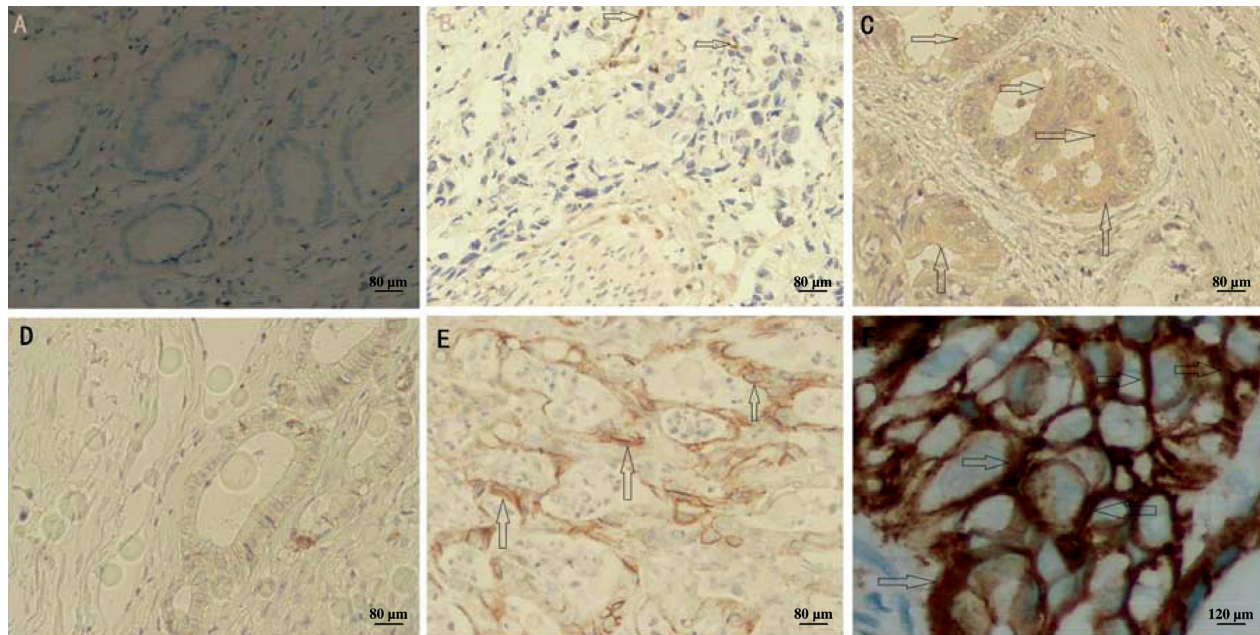


Figure 1. Immunohistochemical staining for snail and E-cadherin protein expression in hilar cholangiocarcinoma (HC). A, Negative snail expression in HC cells. B, Low expression of snail in HC cells. C, High expression of snail in HC cells. D, Reduced E-cadherin expression in HC cells. E, Preserved E-cadherin expression in HC cells. F, Preserved E-cadherin expression in HC cells. The arrows indicate positive staining.

whereas the remaining 8 (17.8%) showed a high MIB1 index ($\geq 10\%$ of the neoplastic cells; Table 1). χ^2 analysis showed no association between snail expression and MIB1 index. Likewise, proportional hazard regression analysis showed no association between MIB1 index and overall survival (Table 3).

Snail and prediction of survival

Survival data were available for 47 patients. The observation period ranged from 1 to 60 months, with a median survival of 20 months (confidence limits: 12 and 42 months) and a median time to censoring of 14 months (confidence limits: 10 and 20 months). At the most recent follow-up, 29 patients were alive and 18 had died. Kaplan-Meier survival curves did not show any significant relationship between tumor grade, tumor location, vascular or perineural invasion, and survival ($P > 0.35$ for all by the log-rank test). Only 2 of 17 (12%) patients in the low-expresser group died of the disease, compared to 17 of 18 (94%) in the high expresser group (Table 3). The Kaplan-Meier survival curves comparing high, low, and no expression of snail showed a highly significant separation ($P < 0.0001$; Figure 3). As can be seen in Table 3, when the variables were compared separately using univariate Cox proportional hazard regression, only snail was found to influence survival ($P = 0.0003$), with high snail expression carrying a 17-fold higher risk of mortality than negative snail expression. Because only snail (of all variables examined) correlated with outcome, regression analysis was not explored further.

Discussion

This study on a relatively large series of 47 patients with resected HC has demonstrated for the first time the independent

prognostic value of immunohistochemically determined snail overexpression. The results of the study were obtained from a highly homogenous series of HC from a single-center hospital.

Up to now, surgical resection has offered the only potential chance of cure in patients with HC (1,2). Usually, extensive resection is required to achieve adequate safety margins (22). In most patients, HC is present at an advanced stage and/or associated comorbidities preclude surgery,

Table 1. Snail expression and clinicopathological variables in 47 hilar cholangiocarcinoma specimens.

Variable	N	Snail expression			P (Pearson χ^2 test)
		Negative	Low	High	
Tumor grade					$\chi^2 = 0.91$; $P = 0.633$
Grade 2	29	7	12	10	
Grade 3	18	5	5	8	
Histologic grade					$\chi^2 = 1.23$; $P = 0.204$
Well differentiated	27	7	12	8	
Moderately differentiated	14	4	3	7	
Poorly differentiated	6	1	2	3	
Vascular invasion					$\chi^2 = 0.08$; $P = 0.962$
Absent	32	8	12	12	
Present	15	4	5	6	
Perineural invasion					$\chi^2 = 0.02$; $P = 0.99$
Absent	31	8	11	12	
Present	16	4	6	6	
Nodal metastasis					$\chi^2 = 1.156$; $P = 0.672$
Absent	33	8	12	13	
Present	14	4	5	5	
Lymphatic invasion					$\chi^2 = 1.283$; $P = 0.782$
Absent	24	7	7	10	
Present	23	5	10	8	
Proliferation (MIB1 ^a)					$\chi^2 = 0.48$; $P = 0.289$
Low	37	8	15	14	
High	8	4	2	2	

^aOnly 45 cases were stained for MIB1 hilar cholangiocarcinoma.

Table 2. Comparison of snail and E-cadherin expression.

Snail expression (N = 47)	E-cadherin expression preserved (N = 28)	E-cadherin expression reduced (N = 19)	χ^2 test
Negative expression (N = 12)	7	5	
Low expression (N = 17)	11	6	
High expression (N = 18)	10	8	$\chi^2 = 3.25$; $P = 0.056$

Differences between groups were assessed by the χ^2 test.

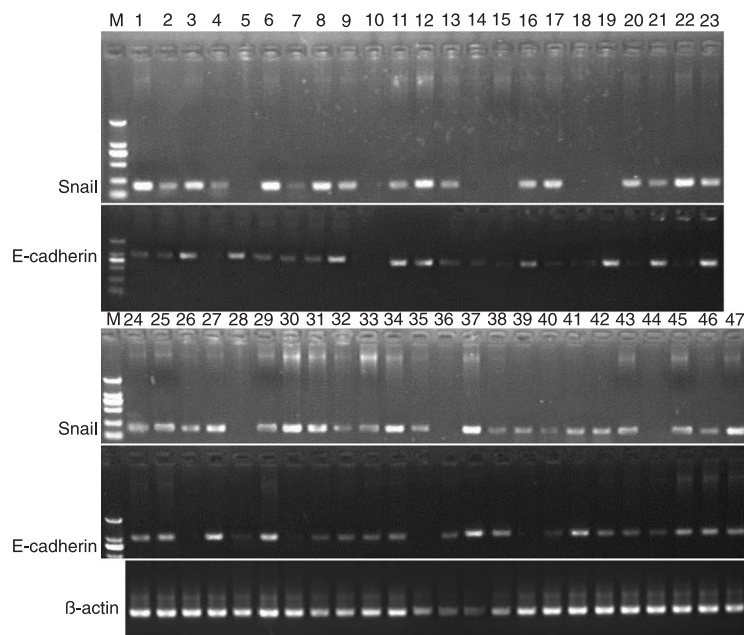


Figure 2. RT-PCR analysis showing comparative expression of snail and E-cadherin mRNA in 47 patients with hilar cholangiocarcinomas. β -actin mRNA expression was used as an internal control. M = molecular marker.

Table 3. Proportional hazard regression analysis of single predictors of survival.

Variable	N	β coefficient (SE)	Test	OR survival (95%CI)
Age (years)	47	0.024 (0.024)	$\chi^2 = 1.03$; P = 0.309	
Gender				
Male	22			1
Female	25	-0.002 (0.475)	$\chi^2 = 0.00$; P = 0.99	1.0 (0.39-2.53)
Tumor grade				
Grade 2	29			1
Grade 3	18	0.488 (0.758)	$\chi^2 = 0.57$; P = 0.449	1.45 (0.56-3.77)
Vascular invasion				
Absent	32			1
Present	15	0.384 (0.475)	$\chi^2 = 0.65$; P = 0.419	1.47 (0.58-3.72)
Perineural invasion				
Absent	31			1
Present	16	0.422 (0.476)	$\chi^2 = 0.79$; P = 0.375	1.52 (0.6-3.87)
Nodal metastasis				
Absent	33			1
Present	14	0.364 (0.463)	$\chi^2 = 0.74$; P = 0.456	1.1 (0.64-3.75)
Lymphatic invasion				
Absent	24			1
Present	23	0.406 (0.474)	$\chi^2 = 0.89$; P = 0.405	1.38 (0.67-3.82)
Proliferation				
Low	41			1
High	6	0.051 (0.643)	$\chi^2 = 0.06$; P = 0.937	1.05 (0.3-3.71)
Snail				
Negative	12			1
Low	17	1.44 (0.844)	$\chi^2 = 2.91$; P = 0.087	4.22 (0.81-22.1)
High	18	2.84 (0.79)	$\chi^2 = 12.89$; P = 0.0003	17.07 (3.63-80.35)

Wald test for regression coefficient. OR = odds ratio; CI = confidence interval. OR is given only for categorical variables.

and this patient group needs adequate palliation such as chemotherapy or photodynamic therapy (23-25).

Assessment of the individual prognosis of patients may be helpful to optimize decision making for surgical treatment and to avoid unnecessary surgical treatment. According to the results of the present study, the demonstration of snail expression level might be a candidate as an additional guide for the clinical management of patients with HC. The immunohistochemically determined status of snail expression level qualifies as an independent prognostic parameter and thus offers additional information about the course of the disease over and above that offered by the well-established clinicopathologic prognostic parameters.

Snail is involved in many pathophysiological processes, including cell proliferation, metastasis, apoptosis, drug resistance, and several aspects of the carcinogenic process (13,15,16,22). Snail expression has not yet been evaluated in any type of bile duct cancer, whereas hepatic tissue and HC have been the topic of study for the analysis of snail expression and regulation. Snail is expressed at high levels in human HC (18), a fact that fits well with our observation of a constant positive snail immunostaining in HC.

Our data demonstrate that, as in other epithelial tumor types, HC patients who express high levels of snail fare worse than those with tumors that lack snail expression, independent of tumor grade or subtype. No association was found between snail expression level and tumor grade. These findings underscore the concept that snail expression level is a specific biological trait that characterizes individual tumors independently of their morphological appearance.

It has been reported that snail, a transcription factor and E-cadherin repressor, is a novel prognostic factor in many carcinomas (26-29). However, expression of snail in HC showed no significant relation to the expression of E-cadherin (Table 2).

Regarding proliferation, a high MIB1 index has been associated with worse outcome in cholangiocarcinoma (30-33). Nevertheless, in our study, the MIB1 index did not correlate with either snail expression level or survival. In contrast to other studies on bile duct cancers, only a minority of our HC samples (13%) showed a high MIB1 index (30). This finding does not need to be attributed to technical artifacts because lymphocyte aggregates within the tumors provided reliable internal controls. The generally low growth rate of HC might be related to the fact that they were already bulky and in an advanced stage at the time of surgery.

In our series of 47 HC, proportional hazard regression analysis (Table 3) showed that snail expression was the only significant predictor of survival ($P = 0.0003$). In keeping

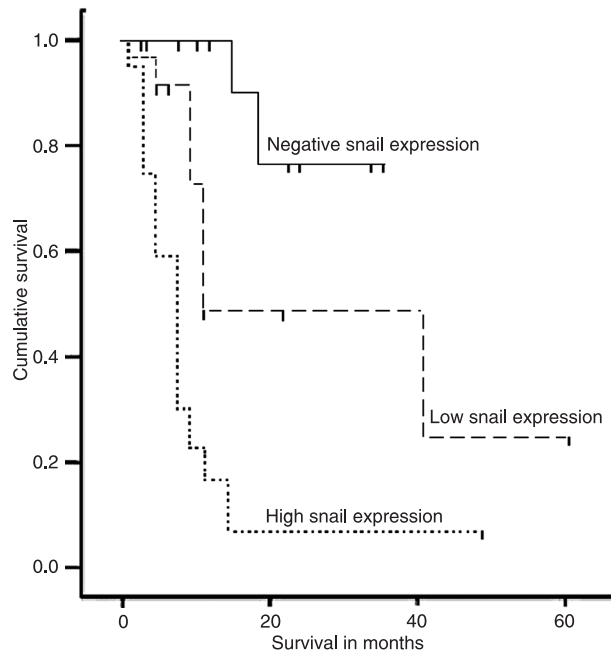


Figure 3. Kaplan-Meier estimated survival rates according to snail expression. Kaplan-Meier survival curves for negative and low snail expression versus high snail expression in 47 patients with hilar cholangiocarcinomas showed a highly significant separation (log-rank test, $\chi^2 = 23.86$; d.f. = 2; $P < 0.0001$).

with the concept that pathological parameters do not have prognostic value in HC, vascular or perineural invasion and tumor grade all failed to correlate with outcome.

In summary, as is the case for bile duct tumors, immunohistochemical detection of snail expression should provide the first biological predictor of survival for HC patients. A high snail expression level is also a better prognostic indicator than MIB1 index, because the former predicts poor survival regardless of tumor grade and stage. The highest 5-year survival rates for HC patients are achieved when complete tumor resection with negative margins can be obtained (1,2). Thus, assessment of snail expression level could help predict the outcome of patients with HC and could also be useful for planning adjuvant therapies during follow-up.

We conclude that snail is overexpressed in HC samples. Snail expression levels can predict poor survival, regardless of pathological features and tumor proliferation. Immunohistochemical detection of snail expression levels on routine sections may provide the first biological prognostic marker.

References

- Park J, Kim MH, Kim KP, Park dH, Moon SH, Song TJ, et al. Natural history and prognostic factors of advanced cholangiocarcinoma without surgery, chemotherapy, or radiotherapy: a large-scale observational study. *Gut Liver* 2009; 3: 298-305.
- Igami T, Nishio H, Ebata T, Yokoyama Y, Sugawara G, Nimura Y, et al. Surgical treatment of hilar cholangiocarcinoma in the "new era": the Nagoya University experience. *J Hepatobiliary Pancreat Sci* 2010; 17: 449-454.
- de Martel C, Plummer M, Franceschi S. Cholangiocarcinoma: descriptive epidemiology and risk factors. *Gastroenterol Clin Biol* 2010; 34: 173-180.
- Thiery JP, Sleeman JP. Complex networks orchestrate epithelial-mesenchymal transitions. *Nat Rev Mol Cell Biol* 2006; 7: 131-142.
- Cardiff RD. Epithelial to mesenchymal transition tumors: fallacious or snail's pace? *Clin Cancer Res* 2005; 11: 8534-8537.
- Hemavathy K, Ashraf SI, Ip YT. Snail/slug family of repressors: slowly going into the fast lane of development and cancer. *Gene* 2000; 257: 1-12.
- Gavert N, Ben-Ze'ev A. Epithelial-mesenchymal transition and the invasive potential of tumors. *Trends Mol Med* 2008; 14: 199-209.
- Thisse C, Thisse B, Schilling TF, Postlethwait JH. Structure of the zebrafish snail1 gene and its expression in wild-type, spadetail and no tail mutant embryos. *Development* 1993; 119: 1203-1215.
- De Craene B, Van Roy F, Berx G. Unraveling signalling cascades for the Snail family of transcription factors. *Cell Signal* 2005; 17: 535-547.
- Barrallo-Gimeno A, Nieto MA. The Snail genes as inducers of cell movement and survival: implications in development and cancer. *Development* 2005; 132: 3151-3161.
- Carver EA, Jiang R, Lan Y, Oram KF, Gridley T. The mouse snail gene encodes a key regulator of the epithelial-mesenchymal transition. *Mol Cell Biol* 2001; 21: 8184-8188.
- Parker BS, Argani P, Cook BP, Liangfeng H, Chartrand SD, Zhang M, et al. Alterations in vascular gene expression in invasive breast carcinoma. *Cancer Res* 2004; 64: 7857-7866.
- Martin TA, Goyal A, Watkins G, Jiang WG. Expression of the transcription factors snail, slug, and twist and their clinical significance in human breast cancer. *Ann Surg Oncol* 2005; 12: 488-496.
- Peinado H, Olmeda D, Cano A. Snail, Zeb and bHLH factors in tumour progression: an alliance against the epithelial phenotype? *Nat Rev Cancer* 2007; 7: 415-428.
- Imai T, Horiuchi A, Wang C, Oka K, Ohira S, Nikaido T, et al. Hypoxia attenuates the expression of E-cadherin via up-regulation of SNAIL in ovarian carcinoma cells. *Am J Pathol* 2003; 163: 1437-1447.
- Poser I, Dominguez D, de Herreros AG, Varnai A, Buettner R, Bosserhoff AK. Loss of E-cadherin expression in melanoma cells involves up-regulation of the transcriptional repressor Snail. *J Biol Chem* 2001; 276: 24661-24666.
- Takkunen M, Grenman R, Hukkanen M, Korhonen M, Garcia de Herreros A, Virtanen I. Snail-dependent and -independent epithelial-mesenchymal transition in oral squamous carcinoma cells. *J Histochem Cytochem* 2006; 54: 1263-1275.
- Sugimachi K, Tanaka S, Kameyama T, Taguchi K, Aishima S, Shimada M, et al. Transcriptional repressor snail and progression of human hepatocellular carcinoma. *Clin Cancer Res* 2003; 9: 2657-2664.
- Zhang KJ, Zhang BY, Zhang KP, Tang LM, Liu SS, Zhu DM, et al. Clinicopathologic significance of slug expression in human intrahepatic cholangiocarcinoma. *World J Gastroenterol* 2010; 16: 2554-2557.
- Hotz B, Arndt M, Dullat S, Bhargava S, Buhr HJ, Hotz HG. Epithelial to mesenchymal transition: expression of the regulators snail, slug, and twist in pancreatic cancer. *Clin Cancer Res* 2007; 13: 4769-4776.
- Shiozaki H, Tahara H, Oka H, Miyata M, Kobayashi K, Tamura S, et al. Expression of immunoreactive E-cadherin adhesion molecules in human cancers. *Am J Pathol* 1991; 139: 17-23.
- Zhuo W, Wang Y, Zhuo X, Zhang Y, Ao X, Chen Z. Knock-down of Snail, a novel zinc finger transcription factor, via RNA interference increases A549 cell sensitivity to cisplatin via JNK/mitochondrial pathway. *Lung Cancer* 2008; 62: 8-14.
- Lang H, Kaiser GM, Zopf T, Sotiropoulos GC, Frilling A, Malago M, et al. [Surgical therapy of hilar cholangiocarcinoma]. *Chirurg* 2006; 77: 325-334.
- Quyn AJ, Ziyaie D, Polignano FM, Tait IS. Photodynamic therapy is associated with an improvement in survival in patients with irresectable hilar cholangiocarcinoma. *HPB* 2009; 11: 570-577.
- Fuks D, Bartoli E, Delcenserie R, Yzet T, Celice P, Sabbagh C, et al. Biliary drainage, photodynamic therapy and chemotherapy for unresectable cholangiocarcinoma with jaundice. *J Gastroenterol Hepatol* 2009; 24: 1745-1752.
- Mikami S, Katsube K, Oya M, Ishida M, Kosaka T, Mizuno R, et al. Expression of Snail and Slug in renal cell carcinoma: E-cadherin repressor Snail is associated with cancer invasion and prognosis. *Lab Invest* 2011; 91: 1443-1458.
- Nassar A, Sookhan N, Santisteban M, Bryant SC, Boughey JC, Giorgadze T, et al. Diagnostic utility of snail in metaplastic breast carcinoma. *Diagn Pathol* 2010; 5: 76.
- Kosaka T, Kikuchi E, Mikami S, Miyajima A, Shirotake S, Ishida M, et al. Expression of snail in upper urinary tract urothelial carcinoma: prognostic significance and implications for tumor invasion. *Clin Cancer Res* 2010; 16: 5814-5823.
- Emadi Baygi M, Soheili ZS, Schmitz I, Sameie S, Schulz WA. Snail regulates cell survival and inhibits cellular senescence in human metastatic prostate cancer cell lines. *Cell Biol Toxicol* 2010; 26: 553-567.
- Rijken AM, Umezawa A, van Gulik TM, Bosma A, Polak MM, Offerhaus GJ, et al. Prognostic value of cell proliferation (Ki-67 antigen) and nuclear DNA content in clinically resectable, distal bile duct carcinoma. *Ann Surg Oncol* 1998; 5: 699-705.
- Fiorentino M, Altamari A, D'Errico A, Gabusi E, Chieco P, Masetti M, et al. Low p27 expression is an independent predictor of survival for patients with either hilar or peripheral intrahepatic cholangiocarcinoma. *Clin Cancer Res* 2001; 7:

- 3994-3999.
32. Aloysius MM, Hewavisenthi SJ, Bates TE, Rowlands BJ, Lobo DN, Zaitoun AM. Predictive value of tumor proliferative indices in periampullary cancers: Ki-67, mitotic activity index (MI) and volume corrected mitotic index (M/V) using tissue microarrays. *World J Surg* 2010; 34: 2115-2121.
33. Shrestha ML, Miyake H, Kikutsuji T, Tashiro S. Prognostic significance of Ki-67 and p53 antigen expression in carcinomas of bile duct and gallbladder. *J Med Invest* 1998; 45: 95-102.