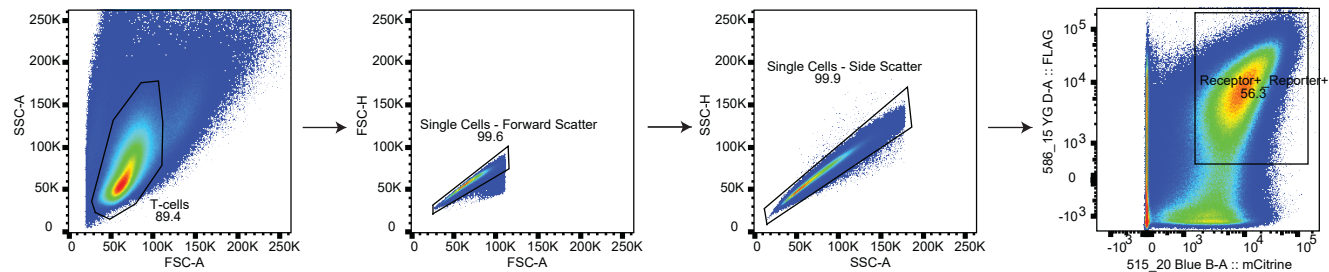

Supplementary information

Engineered receptors for soluble cellular communication and disease sensing

In the format provided by the
authors and unedited

a



b

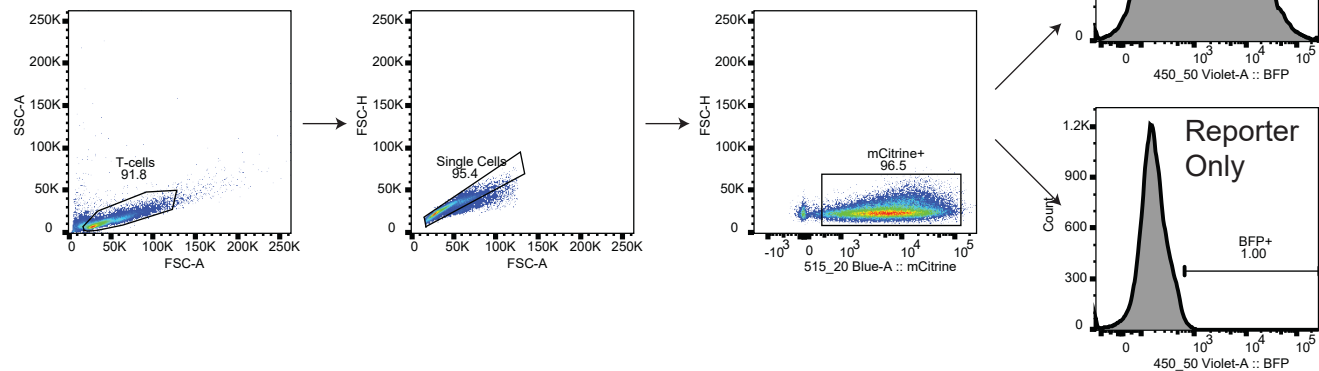


Figure S1: **a)** Representative gating strategy for T cell sorting. Dual transduced T cells harboring an epitope-tagged SNIPR and a SNIPR-inducible payload accompanied by a constitutive fluorescent protein (mCitrine) were gated by scatter profile followed by single cell separation on both forward and side scatter channels, and isolation based on dual expression of the epitope tag (V5 or FLAG) and the constitutive fluorophore on the reporter vector. **b)** Representative gating strategy for T cell activation analysis. T cells were gated on scatter profile and singlet status. Transduced T cells were selected based on expression of the constitutive fluorophore in the reporter vector, and activation was compared to a SNIPR-negative, reporter-only control.