



CASE REPORT

Open Access

Giant left atrial myxoma mimicking severe mitral valve stenosis and severe pulmonary hypertension

Najat N Mouine^{*}, Ilyass I Asfalou, Maha M Raissouni, Aatif A Benyass and El Mehdi E Zbir

Abstract

Myxoma is the most common primary tumor of the heart and can arise in any of the cardiac chambers. This paper reports a 50-year-old woman without medical history and any cardiovascular risk factors was hospitalized for exertional dyspnea and palpitations from three months and significant weight loss. Transthoracic echocardiogram showed a giant left atrial myxoma mobile confined to the left atrium in systole, in diastole the tumor was seen prolapsing across the mitral valve into the left ventricle and partially obstructing it and causing severe functional mitral stenosis with a mean gradient of 21,3 mmHg. Severe pulmonary hypertension was confirmed by Doppler PAPs =137 mmHg. The patient was scheduled for cardiac surgery with good outcome.

Introduction

Myxoma is the most common primary tumor of the heart and can arise in any of the cardiac chambers, although the left atrium is the most commonly involved (75%) [1,2]. The classic triad of myxoma clinical presentation is characterized by intracardiac obstruction, embolisms and constitutional symptoms with fever, weight loss, or symptoms resembling connective tissue disease [1-3].

Case report

A 50-year-old woman patient without medical history and any cardiovascular risk factors was hospitalized for exertional dyspnea and palpitations from three months and significant weight loss. She related worsening of symptoms in the last week before admission.

On admission, she was in the poor condition, cachectic, weighing 45 kg for a height of 1,65 m and a BMI 17 kg/m², blood pressure was 100/60 mm Hg, heart rate was regular 120/min, respiratory rate was 29 breaths/min and she was afebrile. Oxygen saturation was 98%. Physical examination revealed bilateral lung crepitations. A full blood cell count showed a mild normocytic anemia (hemoglobin = 11.5 g/dl). A chest radiograph showed left

atrial enlargement and data of left cardiac failure. The electrocardiogram showed sinus tachycardia.

Transthoracic echocardiography performed in emergency showed a giant left atrial mobile mass (72 × 53 mm) attached to the interatrial septum and confined to the left atrium in systole (Figure 1). In diastole (Figure 2) the tumor was seen prolapsing across the mitral valve into the left ventricle and partially obstructing it and causing severe functional mitral stenosis with a mean gradient of 21,3 mmHg. A mild mitral regurgitation was also found. Severe pulmonary hypertension was confirmed by Doppler PAPs =137 mmHg. The patient was scheduled for cardiac surgery. During the operation, the tumor was excised through a sternotomy from a transseptal approach with a small portion of the atrial wall and the histopathological analysis found atrial myxoma. The clinical course was uncomplicated and the patient was discharged after three weeks with good outcome.

Discussion

Primary cardiac tumors occur infrequently with an incidence of 0.0017–0.19% in autopsy series performed in non-selected populations [1-3]. Myxomas are more common among women and occur much more frequently between the ages of 30–60 years [1-3]. Left atrial myxomas become symptomatic when they obstruct the mitral valve, embolize peripherally or cause systemic effects. The

* Correspondence: mouine2@yahoo.fr
Cardiology department, Mohamed V Military Hospital, Mohamed V University
Souissi, Rabat 10012, Morocco

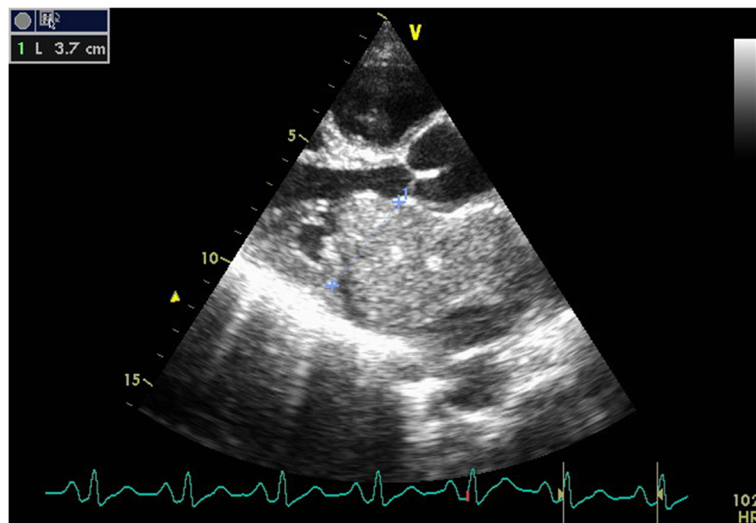


Figure 1 Transthoracic echocardiography long-axis view shows a giant left atrial myxoma fills almost the entire left atrium.

size, location and mobility of myxoma termine the seriousness of mitral valve obstruction. The symptoms vary from dyspnea due to heart failure or syncope to sudden death due complete mitral obstruction [2-5]. Up to more than a half of left atrial myxomas show obstructive symptoms [3], but only in 10% of patients will it cause severe mitral stenosis [4-6]. In our case, the giant myxoma occupied almost the entire dilated left atrial cavity causing a severe mitral valve stenosis and severe pulmonary hypertension. In young patient with congestive heart failure can masquerade as mitral valve disease.

The early echocardiography exam plays a pivotal role in the diagnosis and clinical management of these patients.

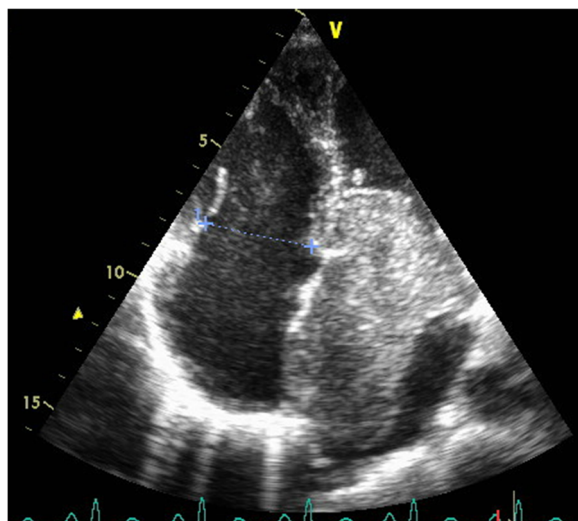


Figure 2 Transthoracic echocardiography 4 cavity view shows a giant left atrial myxoma fills almost the entire left ventricular at diastole.

In this regard, a recent large series of left atrial myxoma emphasizes this topic because the presence of cardiac signs paradoxically could increase the diagnosis delay, probably due to the belief that clinical symptoms are explained by another more common disease, like hypertensive cardiomyopathy or ischemic heart disease [7,8]. The surgical treatment is usually curative, like our case, where the patient had cardiac surgery with good outcome. Recurrences are exceptional, especially observed in the family forms.

Consent

A written informed consent was obtained from the patient for the publication of this paper and the accompanying images.

Competing interest

The authors declare that they have no competing interest.

Authors' contributions

IA participated in the sequence alignment and drafted the manuscript. MR participated in the sequence alignment and drafted the manuscript. AB participated in the sequence alignment and drafted the manuscript. EZ participated in the sequence alignment and drafted the manuscript. All authors read and approved the final manuscript.

Received: 17 July 2012 Accepted: 13 April 2013

Published: 19 April 2013

References

1. Reynen K: Cardiac myxomas. *N Engl J Med* 1995, **333**:1610-1617.
2. Goswami KC: Cardiac myxomas: clinical and echocardiographic profile. *Int J Cardiol* 1998, **63**:251-259.
3. Pinede L: Clinical presentation of left atrial cardiac myxoma. A series of 112 consecutive cases. *Medicine (Baltimore)* 2001, **80**:159-172.
4. Parissis JT: An atypical left atrial myxoma causing intracavitary pressure gradient and typical diastolic transmitral flow of severe mitral stenosis. *Int J Cardiol* 2005, **102**:165-167.

5. Bajraktari: Giant left atrial myxoma in an elderly patient: natural history over a 7-year period. *J Clin Ultrasound* 2006, **34**:461.
6. Panidis IP: Hemodynamic consequences of left atrial myxomas as assessed by Doppler ultrasound. *Am Heart J* 1986, **111**:927–931.
7. Santulli G: Coronary heart disease risk factors and mortality. *JAMA* 2012, **307**(11):1137.
8. Santulli G, Cipolletta E, Sorriento D, *et al*: CaMK4 Gene deletion induces hypertension. *J Am Heart Assoc* 2012, **1**(4):e001081.

doi:10.1186/1755-7682-6-13

Cite this article as: Mouine *et al.*: Giant left atrial myxoma mimicking severe mitral valve stenosis and severe pulmonary hypertension. *International Archives of Medicine* 2013 **6**:13.

Submit your next manuscript to BioMed Central and take full advantage of:

- Convenient online submission
- Thorough peer review
- No space constraints or color figure charges
- Immediate publication on acceptance
- Inclusion in PubMed, CAS, Scopus and Google Scholar
- Research which is freely available for redistribution

Submit your manuscript at
www.biomedcentral.com/submit

