


ARTICLE

DOI: 10.1038/s41467-018-03626-w

OPEN

Probing the strongly driven spin-boson model in a superconducting quantum circuit

L. Magazzù¹, P. Forn-Díaz^{2,3,4,5}, R. Belyansky^{2,6}, J.-L. Orgiazzi^{2,4,6}, M.A. Yurtalan^{2,4,6}, M.R. Otto ^{2,3,4}, A. Lupascu^{2,3,4}, C.M. Wilson^{2,6} & M. Grifoni⁷

Quantum two-level systems interacting with the surroundings are ubiquitous in nature. The interaction suppresses quantum coherence and forces the system towards a steady state. Such dissipative processes are captured by the paradigmatic spin-boson model, describing a two-state particle, the “spin”, interacting with an environment formed by harmonic oscillators. A fundamental question to date is to what extent intense coherent driving impacts a strongly dissipative system. Here we investigate experimentally and theoretically a superconducting qubit strongly coupled to an electromagnetic environment and subjected to a coherent drive. This setup realizes the driven Ohmic spin-boson model. We show that the drive reinforces environmental suppression of quantum coherence, and that a coherent-to-incoherent transition can be achieved by tuning the drive amplitude. An out-of-equilibrium detailed balance relation is demonstrated. These results advance fundamental understanding of open quantum systems and bear potential for the design of entangled light-matter states.

¹Institute of Physics, University of Augsburg, Universitätsstraße 1, D-86135 Augsburg, Germany. ²Institute for Quantum Computing, University of Waterloo, Waterloo N2L 3G1, Canada. ³Department of Physics and Astronomy, University of Waterloo, Waterloo N2L 3G1, Canada. ⁴Waterloo Institute for Nanotechnology, University of Waterloo, Waterloo N2L 3G1, Canada. ⁵Barcelona Supercomputing Center (BSC), C/Jordi Girona 29, 08034 Barcelona, Spain. ⁶Department of Electrical and Computer Engineering, University of Waterloo, Waterloo N2L 3G1, Canada. ⁷Institute for Theoretical Physics, University of Regensburg, 93040 Regensburg, Germany. These authors contributed equally: L. Magazzù, P. Forn-Díaz. Correspondence and requests for materials should be addressed to A.L. (email: adrian.lupascu@uwaterloo.ca) or to C.M.W. (email: chris.wilson@uwaterloo.ca) or to M.G. (email: milena.grifoni@ur.de)

The spin-boson model has been prominent for several decades in the study of open quantum systems^{1, 2}. It describes a two-state quantum system (spin), interacting with its environment. The latter is modeled as a set of harmonic oscillators (bosons) constituting a so-called heat bath. The dynamical regimes of the spin-boson model at a given finite temperature are essentially dictated by the coupling to the environment and by the low-frequency behavior of the bath spectrum. In the strong coupling regime, this model provides an accurate representation of a variety of physical and chemical situations of broad interest, including incoherent tunneling of bistable defects in metals³ and amorphous systems⁴, macroscopic quantum tunneling in superconducting circuits⁵, or electron and proton transfer in solvent environments⁶. Moreover, the spin-boson model is relevant in describing exciton transport in biological complexes^{7, 8}. The weak coupling regime characterizes situations where preserving quantum coherence is crucial, such as in quantum computing, whereas strong coupling can give rise to novel entangled states of system and reservoir, for example, to polaron or Kondo clouds².

In the Ohmic spin-boson model, the environment has a linear spectrum at low frequencies which leads to various remarkable phenomena, such as bath-induced localization or a coherent-to-incoherent transition even at zero temperature for large enough coupling strengths¹.

Recently, a new experimental setup was implemented⁹ which realizes the Ohmic spin-boson model with an environmental coupling tunable from weak to ultrastrong¹⁰. This particular implementation is formed from a superconducting flux qubit coupled to a transmission line, which play the role of the two-state system and environment, respectively. The tunability of the interaction allows one to test the key predictions of the spin-boson model. In¹¹, a qubit ultrastrongly coupled to a single oscillator mode was demonstrated.

In this article, we study the spin-boson setup from ref. ⁹ under strong driving, which adds a new dimension of exploration for a spin-boson system¹². Previous experiments studying strongly driven systems have reported remarkable effects, such as the formation of dressed states^{13–15}, Landau-Zener interference^{16, 17}, amplitude spectroscopy¹⁸, and the observation of Floquet states¹⁹. However, these experimental reports were restricted to weak or moderate coupling to the environment. Here, we combine intense driving and diverse dissipation strengths in a superconducting qubit circuit, with the aim of tracing out the dynamical phase diagram of a driven spin-boson system in coupling regimes ranging from weak to ultrastrong.

Results

Relation between experimental and theoretical observables. A schematic representation of the experimental setup is shown in Fig. 1a. The two-state system is a flux qubit, a superconducting circuit consisting of a loop interrupted by four Josephson junctions²⁰. The bosonic environment is formed from electromagnetic modes in the superconducting transmission line coupled to the qubit. The qubit is pumped by a strong continuous-wave drive applied through the transmission line. Both the amplitude and the frequency of the drive can be changed over a broad range. The driven system is studied spectroscopically by additionally applying a weak probe field. The measured transmission T at the probe frequency ω_p gives direct access to the linear response function associated to the weak probe signal, the so-called linear susceptibility χ via the relation

$$T(\omega_p) = 1 - i\mathcal{N}\hbar\omega_p\chi(\omega_p), \quad (1)$$

where \mathcal{N} is a coupling constant (see Methods). According to

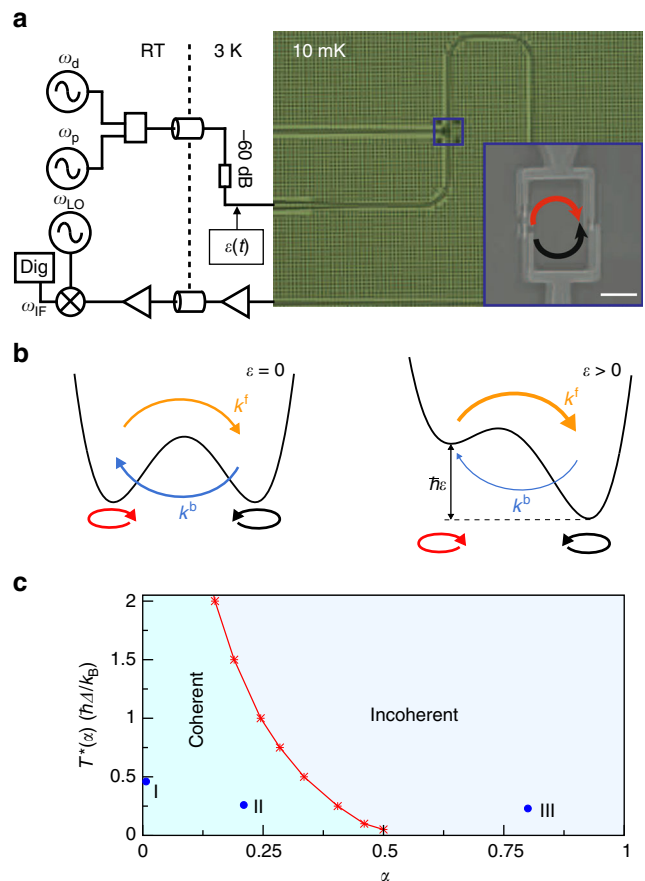


Fig. 1 Experimental setup and phase diagram of the symmetric spin-boson model. **a** Measurement, driving circuit schematic and optical micrograph of a device similar to the ones used in the experiment. A coplanar waveguide running across the chip plays the role of the bath coupled to the qubit. The inset is a scanning electron micrograph showing the qubit attached to the line. The scale bar is 2 μm . Here and in panel **b** the red (black) arrow indicates clockwise (anticlockwise) circulating persistent currents. **b** Schematics of the double-well potential associated to the flux threading the qubit. In the absence of external driving sources the potential is symmetric and the forward and backward tunneling rates $k^{f/b}$ are equal. In the presence of a positive bias asymmetry ε , forward tunneling dominates over backward tunneling. **c** Dependence of the temperature $T^*(\alpha)$ for the crossover from the coherent to the incoherent tunneling regime on the coupling α . The red curve interpolates numerical results (asterisks) obtained within the nonperturbative NIBA. The dots labeled I, II, and III mark the positions in parameter space of the three devices used in this work

Kubo's linear response theory²¹, $\chi(\omega)$ carries information about the dispersive and absorptive properties of the qubit in the absence of the probe, and in turn, as discussed below, about the dynamical phases of the driven spin-boson system. By measuring the transmission also when the drive is switched off, we get a reference for the effects of a coherent drive on quantum coherence and localization properties.

Phase diagram of the undriven spin-boson model. We first introduce the spin-boson model and its dynamics without driving. Historically, the Ohmic spin-boson model was first studied in the context of the tunneling of a quantum particle in a double-well potential¹. At low temperatures the dynamics are effectively restricted to the Hilbert space spanned by the states $|L\rangle$ and $|R\rangle$,

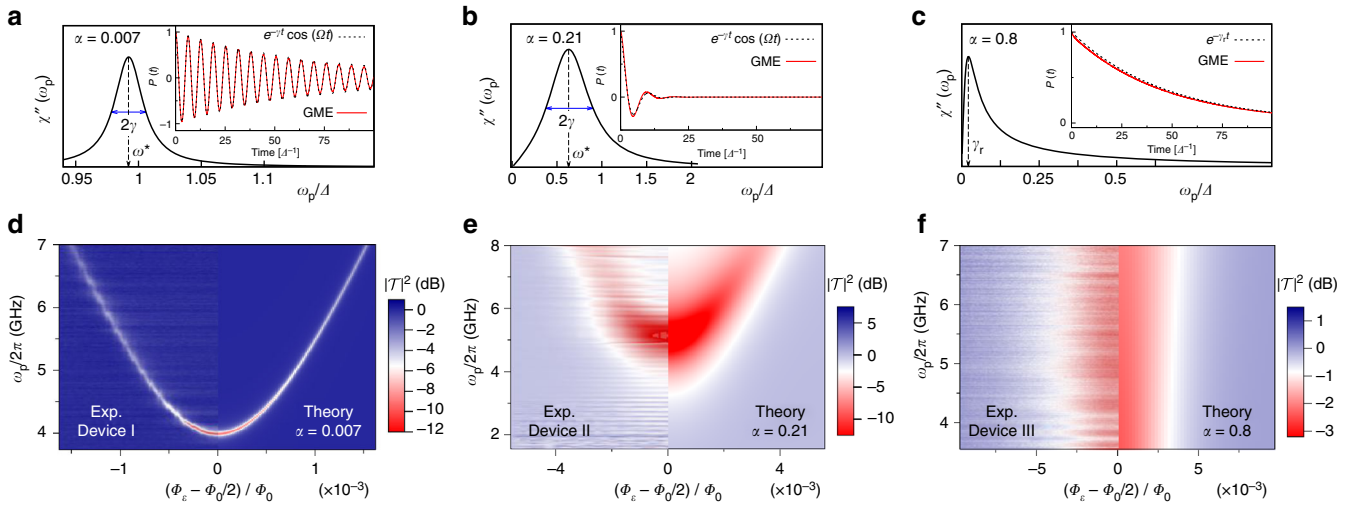


Fig. 2 Spin-boson dynamics and spectra at different coupling strengths in the absence of the drive. **a–c** Frequency dependence of the imaginary part $\chi''(\omega_p)$ of the linear susceptibility (a.u.) and time evolution of the population difference $P(t)$ (insets) for the three selected combinations of coupling and temperature shown in Fig. 1c. The position ω^* and FWHM 2γ of the linear susceptibility peak in the coherent regimes ($\alpha = 0.007$, $\alpha = 0.21$) provide a direct measure of the renormalized qubit frequency $\Omega = \sqrt{(\omega^*)^2 - \gamma^2}$. In the incoherent regime ($\alpha = 0.8$), the peak position yields the relaxation rate γ_r . **d–f** Experimental transmission spectra of three flux qubit devices with different coupling junctions are compared with spectra calculated within the NIBA. The characteristic hyperbolic spectrum of the flux qubit is evident in **d** and recognizable in **e**. Its disappearance in **f** indicates the transition to the incoherent regime. At $\Phi_\epsilon = \Phi_0/2$ the spin-boson system is unbiased, which is the situation of panels **a–c**

localized in the left and right well, respectively (see Fig. 1b). Transitions between the two localized configurations are possible due to quantum-mechanical tunneling and are recorded in the time evolution of the population difference $P(t) \equiv \langle \sigma_z(t) \rangle = P_R(t) - P_L(t)$ of the two localized eigenstates. The coordinate associated with the double-well potential need not be geometrical, but it can represent other continuous variables. For the superconducting flux qubit used in our experiment, this is the magnetic flux Φ in the loop. The eigenstates $|L\rangle$ and $|R\rangle$ of the flux operator are related to the currents circulating clockwise/anticlockwise in the superconducting loop²⁰ (see red/black arrows in Fig. 1a, b). In this basis, the qubit Hamiltonian is

$$H_{\text{qb}}(t) = -\frac{\hbar}{2} [\Delta \sigma_x + \epsilon(t) \sigma_z], \quad (2)$$

where σ_i are the Pauli matrices. The parameter Δ accounts for interwell tunneling and $\hbar\epsilon(t)$ is the difference in energy between the two wells, which is controllable. The electromagnetic field in the transmission line can be described as a continuously distributed set of propagating modes with a distribution in frequency given by the spectral density

$$G(\omega) = 2\alpha\omega e^{-\omega/\omega_c}, \quad (3)$$

corresponding to Ohmic damping with the dimensionless coupling strength α and high frequency cutoff ω_c .

Theoretical work on the spin-boson model has primarily focused on the temporal dynamics of the spin. Quite generally, independent of the initial state of the qubit and the form of the bath spectral density, energy exchange with the environment is responsible for equilibration of the qubit with the bath on a time scale given by the relaxation rate γ_r . Furthermore, quantum fluctuations and energy exchange yield dephasing with rate γ . In the Ohmic spin-boson model, low frequency environmental modes also lead to a strong renormalization of the bare qubit tunneling splitting Δ . The renormalized qubit frequency Ω depends on the bath temperature and coupling strength α , and is always reduced with respect to Δ . This leads to three distinct dynamical regimes. Two of them, occurring for $\alpha < 1$, are depicted

in Fig. 1c for the symmetric spin-boson model shown in the left drawing in Fig. 1b. The coherent regime corresponds to $\Omega > \gamma$. This occurs for $\alpha < 1/2$ and a temperature $T < T^*(\alpha)$. In this regime, for a spin initially localized in the right well ($P(0) = 1$), the qubit displays damped coherent oscillations of frequency Ω , specifically, $P(t) = \exp(-\gamma t) \cos(\Omega t)$ (see insets of Fig. 2a, b). At the crossover temperature, the renormalized frequency Ω vanishes (see Methods and Eq. (26)). The incoherent regime corresponds to $\alpha < 1/2$ and $T > T^*(\alpha)$ or $1/2 < \alpha < 1$. The dynamics are characterized by incoherent tunneling transitions with rates k^f/b defined in Section III of the Methods section (Fig. 2b). Correspondingly, we have $P(t) = e^{-\gamma_r t}$, where $\gamma_r = k^f + k^b$ (see inset in Fig. 2c). In the third regime, corresponding to $\alpha > 1$, localization occurs. Here, the backward and forward rates are renormalized to zero by the low-frequency bath modes. As shown in Fig. 1c, in the Ohmic spin-boson model, the dynamics becomes fully incoherent above $\alpha = 0.5$ for any value of the temperature. As the coupling approaches this value, any perturbative approach in the coupling fails to describe the physics of the system. Consistently with ref.⁹, we refer to the coupling regimes $\alpha > 0.5$ as ultrastrong. Primary scope of this work is to understand how the dynamical phase diagram in Fig. 1c is modified by a periodic modulation of the detuning. This is a formidable task, since the spin-boson problem with time-periodic detuning cannot be solved analytically in the whole parameter space. Exact solutions exist for the particular value $\alpha = 1/2$ ²². Recently, an analytical solution was suggested for the case of a spin-boson system with time-periodic tunneling amplitude²³.

Linear susceptibility of the driven spin-boson model. To carry out our spectroscopic analysis, we describe the bias between the potential wells in our experimental setup by means of the time-dependent function

$$\epsilon(t) = \epsilon_0 + \epsilon_p \cos(\omega_p t) + \epsilon_d \cos(\omega_d t). \quad (4)$$

Here, the static component ϵ_0 is related to the externally applied flux Φ_ϵ by $\epsilon_0 \propto (\Phi_\epsilon - \Phi_0/2)$, with Φ_0 the magnetic flux quantum. The remaining contributions account for the probe (p), with

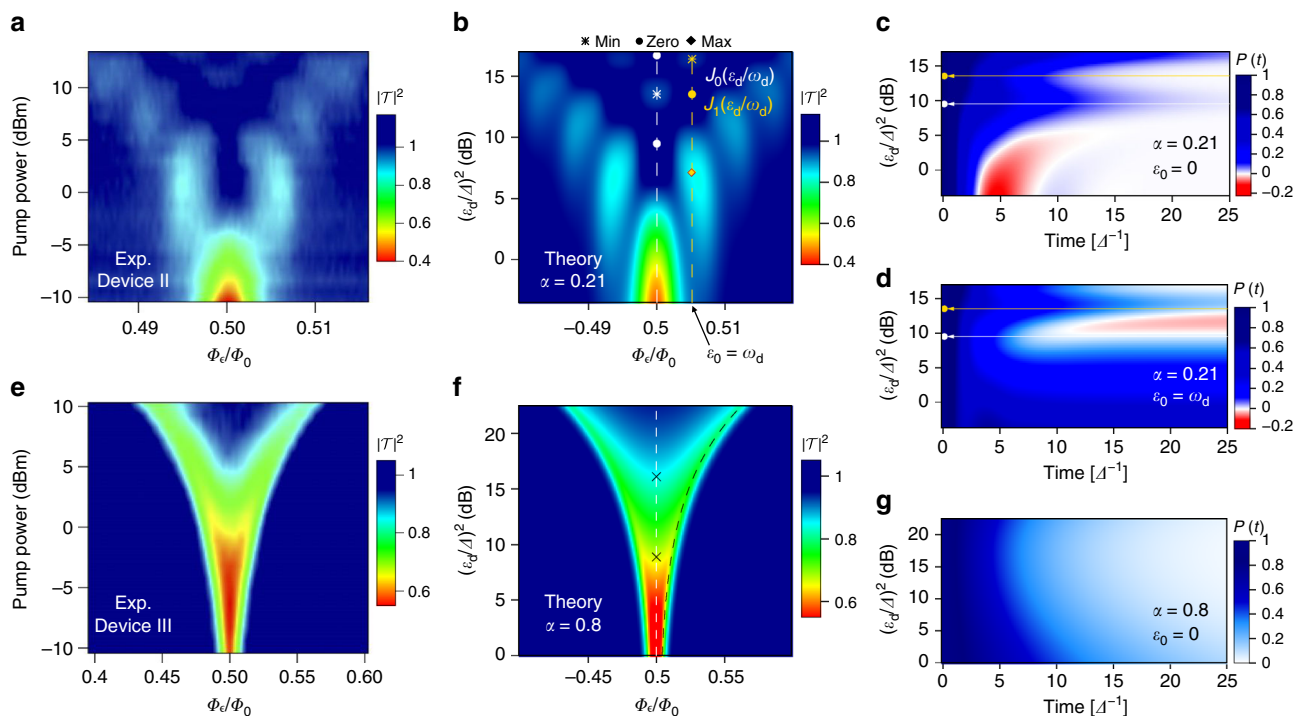


Fig. 3 Spectral response and dynamics of the driven spin-boson system. **a, b** Observed and calculated transmission at the probe frequency for the moderately coupled Device II ($\alpha = 0.21$) as function of static bias and pump strength. A clear structure of multi-photon resonances appears. The dashed lines indicate cuts at fixed bias where the dynamics in panels **c, d** are calculated. **c, d** Predicted dynamics of $P(t)$ with $P(0) = 1$. **e, f** Observed and calculated spectrum of the ultrastrongly coupled Device III (with $\alpha = 0.8$). The spectrum is smoothed, as compared to panels **a, b**, indicating fully incoherent dynamics. The black dashed line in **f** corresponds to the condition $\varepsilon_{\text{eff}} = 2k_B T / \hbar$ for the effective nonequilibrium bias (see Eq. (7)) and the symbols “x” mark the first two zeroes of $J_0(\varepsilon_d \tau_{\text{env}})$. **g** Time evolution of $P(t)$ calculated at the symmetry point, $\varepsilon_0 = 0$, in the same range of pump strengths as in panel **f**

amplitude ε_p and frequency ω_p , and the drive (d), with amplitude ε_d and frequency ω_d . For details, see the Methods section. The central quantity in this work is the linear susceptibility $\chi(\omega_p)$, which describes the qubit’s response at the probe frequency ω_p , see Eq. (1). The susceptibility measures deviations of the asymptotic population difference, $P^{\text{as}}(t)$, from its value P_0 in the absence of the weak probe according to²⁴

$$P^{\text{as}}(t) = P_0 + \hbar \varepsilon_p [\chi(\omega_p) e^{i\omega_p t} + \chi(-\omega_p) e^{-i\omega_p t}]. \quad (5)$$

In this work, the dynamical quantity $P(t)$, and in turn the susceptibility $\chi(\omega_p)$, have been calculated within the so-called noninteracting-blip approximation (NIBA). This approximation yields a generalized master equation for $P(t)$ with kernels that are nonperturbative in α . It becomes exact at large temperatures and/or coupling strengths². Under the assumption that ω_d is large compared to the (renormalized) frequency scales of the spin-boson particle, closed expressions for the transient evolution of $P(t)$, as well as for the linear susceptibility of the driven spin-boson system, can be obtained (details in the Methods section).

Characterizing the dynamical regimes of the undriven devices.

We first demonstrate in Fig. 2a–c the connection between the imaginary part, $\chi''(\omega_p)$, of the susceptibility and $P(t)$ for the symmetric spin-boson model in the presence of the probe only ($\varepsilon_0 = \varepsilon_d = 0$). We choose three distinct values of the coupling, namely $\alpha = 0.007$, 0.21 , situated in the coherent regime, and $\alpha = 0.8$ in the incoherent regime (see the three dots indicated in Fig. 1c). In the coherent regime, $\chi''(\omega_p)$ has a peak at $\omega^* = (\Omega^2 + \gamma^2)^{1/2}$ with full width at half maximum (FWHM) given by 2γ . In the incoherent regime, the peak is located near zero frequency, at the value of the relaxation rate γ_r . According to Eq. (1), a

maximum in $\chi''(\omega_p)$ corresponds to a minimum in the transmission $\mathcal{T}(\omega_p)$. By recording the evolution of the transmission as a function of ω_p and of another external parameter, e.g., the static asymmetry ε_0 , various dynamical regimes can be identified.

The theoretically calculated transmission is presented in Fig. 2d–f as a function of the applied static bias ε_0 for the three values of α discussed above. As expected, the qubit dispersion relation can be traced back in the highly coherent and underdamped regimes corresponding to $\alpha = 0.007$ and $\alpha = 0.21$, respectively. In the overdamped regime, with $\alpha = 0.8$, the transmission is nearly independent of ω_p . Finally, comparison with the measured transmission for three distinct tunable devices, named I, II, and III in the following, allows us to position the three devices as shown in the phase diagram in Fig. 1c. Temperature, cutoff frequency, renormalized splitting Ω , and conversion factor \mathcal{N} are estimated from the experiments. Deviations in the choice of these parameters can yield variations in the estimate of the coupling strength α . The close agreement between the calculated and measured qubit spectra gives a strong evidence that Device III, with an estimated coupling $\alpha = 0.8 \pm 0.1$ (see the Supplementary Note 7), is in the nonperturbative ultrastrong coupling regime, buttressing the conclusion of ref. 9, 25. In a recent work²⁶ a polaron approach, which is equivalent to the NIBA², has been used to provide approximate expressions for the response of an undriven qubit coupled to a transmission line.

Spectroscopy of the driven spin-boson model. Let us now turn to the impact of a strong coherent drive on a spin-boson particle in the intermediate and ultrastrong coupling regimes captured by devices II and III, respectively. The experimental spectra in Fig. 3a, e show the probe transmission as a function of flux bias ε_0

and drive power ($\propto \varepsilon_d^2$) for these devices. Probe and drive frequencies are respectively set to $\omega_p/2\pi = 5.2$ GHz and $\omega_d/2\pi = 9$ GHz for Device II. For Device III we choose $\omega_p/2\pi = 4$ GHz and $\omega_d/2\pi = 3$ GHz. For Device II, the probe is on-resonance with the undriven qubit at the symmetry point. For Device III, the qualitative features of the driven spectra are largely insensitive to the choice of ω_p and ω_d . The theoretical predictions, shown in Fig. 3b, f, agree well with the experimental observations. Similar to the pump-only case, striking differences are observed in the transmission of the two devices. Let us start discussing Device II. Minima in the transmission are clearly seen in Fig. 3a, b whenever the static bias matches a multiple of the pump frequency, $\varepsilon_0 = n\omega_d$, as indicated by the vertical lines drawn in Fig. 3b for $n = 0, 1$. Furthermore, the observed pattern with fixed bias at the n -th resonance results from a modulation by a prefactor proportional to $J_n(\varepsilon_d/\omega_d)$, where J_n is a Bessel function of the first kind. For example, the qubit response at the symmetry point is suppressed in correspondence with the first zero of the Bessel function $J_0(\varepsilon_d/\omega_d)$ (indicated by a circle), where the incoming probing field is fully transmitted. At larger power, as the zero order Bessel function increases again, the transmission diminishes. Similar patterns have already been reported in driven qubit devices in the highly coherent regime^{14, 17}. Those results can be interpreted as a signature of entangled light-matter states known as dressed-states^{13, 27, 28}. Near the multiphoton resonance, $\varepsilon_0 = n\omega_d$, two of these dressed states form an effective two-level system with dressed tunneling splitting $\Delta_n = \Delta J_n(\varepsilon_d/\omega_d)$. Near a zero of the n -th Bessel function, tunneling is strongly suppressed and hence the transmission is maximal. This phenomenon has been dubbed coherent destruction of tunneling in the literature²⁹. Dissipation modifies this simple coherent picture, as demonstrated for Device III in Fig. 3e, f where no Bessel pattern is present and a smooth “V-shaped” transmission is observed instead.

Discussion

To understand to what extent dissipation modifies the dressed state picture, we have studied the transient dynamics of the population difference $P(t)$ in the presence of drive only ($\varepsilon_p = 0$). As discussed in the Methods, $P(t)$ is governed by a generalized master equation featuring the two nonequilibrium kernels $K^{\pm/-}(t)$, which in the absence of probe field, are symmetric/antisymmetric in the static bias ε_0 . In Laplace space, by solving the pole equation $\lambda + K^+(\lambda) = 0$, where $K^+(\lambda) = \int_0^\infty \exp(-\lambda t) K^+(t) dt$, the phase diagram of the driven spin-boson particle can in principle be found along the lines discussed in the Methods. The kernel $K^+(\lambda)$ can be expressed as the sum $K^f(\lambda) + K^b(\lambda)$ of the nonequilibrium forward and backward kernels

$$K^{f/b}(\lambda) = \frac{\Delta^2}{2} \int_0^\infty dt e^{-Q(t)-\lambda t} J_0[d(t)] \cos[Q'(t) \mp \varepsilon_0 t], \quad (6)$$

with $d(t) = 2\varepsilon_d\omega_d^{-1} \sin(\omega_d t/2)$. The correlation function $Q(t) = Q'(t) + iQ''(t)$ describes the environmental influence and its explicit form is discussed in the Supplementary Note 1 and in Eqs. (15) and (16) of the Methods. For the present discussion, it is enough to observe that in the long-time limit $t \gg \tau_{\text{env}}$, where $\tau_{\text{env}} = (2\pi\alpha k_B T/\hbar)^{-1}$, the real part of $Q(t)$ assumes the form $Q'(t) \sim t/\tau_{\text{env}} + \text{const.}$ appropriate to white noise. Thus, τ_{env} yields an estimate of the memory time of the kernels entering Eq. (6). The impact of the drive is encapsulated in the time-dependent argument of the Bessel function of first kind J_0 . Depending on whether $\omega_d\tau_{\text{env}} \geq 1$ (slow relaxation) or $\omega_d\tau_{\text{env}} \leq 1$ (fast relaxation), two distinct regimes corresponding to devices II and III are encountered, respectively.

Let us focus on the first case, explored in Fig. 3a, b. In this regime, one full cycle of the drive field is possible before environmental effects induce a loss of coherence. Thus, we expect that coherent absorption and emission processes from the drive field take place during a cycle. An expansion of the Bessel function in Eq. (6) in a Fourier series, $J_0[d(t)] = \sum_n J_n^2(\varepsilon_d/\omega_d) \exp(in\omega_d t)$, shows that the channel with $n\omega_d = \varepsilon_0$, dominates the series¹², and hence an effective two-level description with renormalized tunneling splitting Δ_n applies. A solution of the pole equation in this approximation yields a renormalization of the crossover temperature $T^*(\alpha) \rightarrow T^*(\alpha)[J_n(\varepsilon_d/\omega_d)]^{1/(1-\alpha)}$. Because $J_n < 1$, the pump field always yields a reduction of quantum coherence. Near the zeros of J_n , quantum coherence is fully suppressed and an incoherent decay is expected. This behavior is seen in Fig. 3c, d, where we show the simulated time evolution of $P(t)$ as a function of pump power at $\varepsilon_0 = 0$ and $\varepsilon_0 = \omega_d$, respectively. The color map of $P(t)$ displays coherent oscillations at low to moderate pump amplitudes, where $J_0(\varepsilon_d/\omega_d)$ is still of order one. However, a full suppression of quantum coherence occurs near the first zero of J_0 , highlighted by a solid white circle. We notice that the almost complete standstill predicted to occur at the zeros of J_0 for a dissipation-free, symmetric two-level particle²⁹, is destroyed by environmental relaxation processes, albeit on a very slow time scale. A similar suppression of coherence, together with a very slow incoherent decay, is observed at the first resonance, $\varepsilon_0 = \omega_d$, shown in Fig. 3d, in correspondence with the first zero of J_1 . Independently of the initial preparation, the steady state population acquires the value $P_0 = (K^f - K^b)/(K^f + K^b)$, where $K^{f/b} = K^{f/b}(\lambda = 0)$ are the nonequilibrium backward and forward rates. For the symmetric case shown in Fig. 3c, the backward and forward rates are equal and hence $P_0 = 0$. A genuine nonequilibrium behavior is observed in Fig. 3d in the region between the first zeros of J_0 and J_1 , where the steady state qubit population $P_0 < 0$, corresponding to a larger population of the left state despite $\varepsilon_0 > 0$. This phenomenon originates from the effective detailed balance relation

$$K^f = K^b e^{\hbar\varepsilon_{\text{eff}}/k_B T} \quad (7)$$

between the nonequilibrium backward and forward rates $K^{f/b}$. This equation implicitly defines the effective asymmetry ε_{eff} . Only in the absence of the drive does ε_{eff} coincide with the static bias ε_0 . We note that the use of an external coherent drive to tune the direction of long-range electron chemical reactions via a drive-induced effective bias was originally proposed in refs. 30, 31.

Let us turn to the explanation of the results for Device III displayed in Fig. 3e–g, where $\omega_d\tau_{\text{env}} \ll 1$ applies. In this regime the approximate result

$$\chi(\omega_p) = \frac{1}{4k_B T} \frac{\partial \varepsilon_{\text{eff}}/\partial \varepsilon_0}{\cosh^2(\hbar\varepsilon_{\text{eff}}/2k_B T)} \frac{\gamma_d}{\gamma_d + i\omega_p} \quad (8)$$

can be obtained from the exact expression Eq. (19) of the Methods section. This form is associated to the incoherent dynamics of the spin boson particle with nonequilibrium relaxation rate $\gamma_d \equiv K^f + K^b$. At the symmetry point we have $\varepsilon_{\text{eff}} = \varepsilon_0 = 0$, with $\lim_{\varepsilon_0 \rightarrow 0} \partial \varepsilon_{\text{eff}}/\partial \varepsilon_0 \neq 0$. Correspondingly, the susceptibility $\chi''(\omega_p)$ has a peak at $\omega_p = \gamma_d$. An expansion in the small parameter $\omega_d\tau_{\text{env}}$ yields $J_0[d(t)] \approx J_0(\varepsilon_d t)$ and hence a relaxation rate γ_d which is independent of the driving frequency ω_d , consistent with the experimental observation that the spectra depend weakly on ω_d . The dependence on the pump amplitude ε_d remains, as clearly seen in Fig. 3e–g where the transmission at the symmetry point smoothly increases for increasing drive amplitude. The transmission is almost complete for drive powers above the value $(\varepsilon_d/\Delta)^2 \simeq 16$ dB roughly corresponding to the second

Table 1 Parameters used for simulations

Figures 2 and 3	Device I	Device II	Device III
$\omega_c/2\pi$ (GHz)	65	65	65
I_{pers} (nA)	600	280	250
α	0.007 [fit]	0.21 [fit]	0.8 ^a
$\Delta/2\pi$ (GHz)	4.04 [fit]	7.23 [fit]	8.0 ^a
Figure 2	Device I	Device II	Device III
T (mK)	90	90	90
\mathcal{N} (estimated)	0.03 [fit] (0.02)	1.1 [fit] (0.5)	8.0 ^a (5–10)
Figure 3	Device I	Device II	Device III
T (mK)	90	175 ^a	90 ^a
\mathcal{N}		1.1 ^a	16.0 ^a
$\omega_p/2\pi$ (GHz)		5.2	4.0
$\omega_d/2\pi$ (GHz)		9.0	3.0

^aValue yielding qualitative agreement with the experiment, see Supplementary Note 7

zero of $J_0(\varepsilon_d \tau_{\text{env}})$ (see Fig. 3f, where the black crosses highlight the first two zeroes). Regarding the transmission at finite static bias, we expect that no thermally assisted excitation is possible when $\hbar \varepsilon_{\text{eff}} \gg k_B T$; correspondingly the susceptibility vanishes, as accounted by the term $\cosh^{-2}(\hbar \varepsilon_{\text{eff}}/2k_B T)$ in Eq. (8). This behavior is clearly seen in Fig. 3f, where the black dashed line corresponds to the condition $\hbar \varepsilon_{\text{eff}} = 2k_B T$. Below the dashed line the effective bias is larger than the temperature and the signal is fully transmitted.

In conclusion, we have experimentally and theoretically explored the paradigmatic driven spin-boson model in the underdamped and ultrastrong dynamical regimes. Quantum coherence is generally reduced or even destroyed by a drive field in a way which can be tuned by sweeping the drive amplitude and frequency. The control of the dynamics is possible for a generic Ohmic spin-boson particle, independently of its microscopic details. Localization and even population inversion can be attained by properly tuning the parameters of the coherent drive. Our results might find application in various physical, chemical, and quantum biology realizations of the driven spin-boson model.

Methods

Experimental fabrication and measurement setup. Devices were fabricated according to the procedure explained in ref. 9. Our setup was designed in such a way that the reservoir (the photons in the transmission line) can still be considered in equilibrium despite the strong pumping applied to the qubit. The response of the photons depends on the intensity of the drive and on the coupling mechanisms. In our experiment, the degrees of freedom of the bath are very weakly coupled to the drive, compared to the qubit. Hence, even though the qubit is strongly driven, the bath is not. To be more quantitative, the most sensitive component of our bath is the 50 Ohm input of our amplifier. From its data sheet, the amplifier starts to become nonlinear for an input power of -12 dBm (its 1 dB compression point), which is many orders of magnitude higher than what our pump power is. The other components of our bath, which would be microwave attenuators (resistors), are linear up to energies a few orders of magnitude higher. From the theoretical point of view, we expect that the transmission of the fully-driven spin-boson model would differ qualitatively from the one of the system-driven spin-boson model considered in this work. No trivial mapping exists between the two models. The very good agreement between theoretical predictions and the experiment validate our conclusion that merely the system is driven.

Relation between theoretical and experimental observables. The flux operator in the qubit basis is identified with $\Phi = f \sigma_z$. The proportionality constant f is a fitting parameter which, for low couplings, is estimated to be $f = M I_{\text{pers}}$, with M the qubit-line mutual inductance and I_{pers} the persistent current in the superconducting loop. This estimate provides values (see Table 1) which are not far from those obtained from fit to data for devices I and II and from qualitative analysis for Device III. The externally applied tunable flux Φ_ε is related to the static bias by $\hbar \varepsilon_0 = 2 I_{\text{pers}} (\Phi_\varepsilon - \Phi_0/2)$, with Φ_0 the magnetic flux quantum. The probe input voltage is connected to the angular frequency ε_p yielding the theoretical probe amplitude, see Eq. (4), through $V_p^{\text{in}}(t) = f_z \varepsilon_p \cos(\omega_p t)$, where the proportionality constant is $f_z =$

$\hbar Z/f$ and Z is the line impedance. It follows that the constant \mathcal{N} in Eq. (1) is given by the ratio f/f_z .

Parameters used in the simulation. The parameters used in the numerical simulations shown in Figs. 2 and 3 are provided in Table 1. Coupling α , bare tunneling frequency Δ , and proportionality constant \mathcal{N} are determined by fit to data of $|T|^2$ vs. ω_p performed for the nondriven devices I and II at the symmetry point $\Phi_\varepsilon = \Phi_0/2$ (see Fig. 2d, e). Such fits along with their accuracy are shown in Supplementary Fig. 4. In Fig. 2, the measured value of 90 mK is used for the temperature. Temperature values used in Fig. 3 account for a possibly higher effective temperature introduced by the drive at the qubit position. Specifically, for Device II, in the presence of the pump drive, a better qualitative agreement between simulated and experimental transmission is obtained by assuming a higher temperature. As the qualitative features of the simulated transmission for Device III, operating at ultrastrong coupling, are weakly sensitive to variations of the temperature, we used the same value of temperature for the pump-probe and the probe-only cases.

Driven spin-boson dynamics within the NIBA. The spin-boson model describes the coupling of a two-level quantum system to a bath of harmonic oscillators³². By assuming a coupling which linearly depends on the coordinates of the oscillators, one arrives at the famous spin-boson Hamiltonian

$$H(t) = H_{\text{qb}}(t) - \frac{\hbar}{2} \sigma_z \sum_i c_i (a_i^\dagger + a_i) + \sum_i \hbar \omega_i a_i^\dagger a_i, \quad (9)$$

where a_i, a_i^\dagger are bosonic annihilation and creation operators and the coefficients c_i are the amplitude of the interaction strength of the two-level system with mode i . The bosonic heat bath is fully characterized by the spectral function $G(\omega) = \sum_i c_i^2 \delta(\omega - \omega_i)$. For Ohmic damping, $G(\omega) \propto \omega$, as assumed in Eq. (3).

The Ohmic spin-boson problem owes its popularity to its ubiquity and to the variety of parameter regimes it encompasses as the temperature T and the coupling strength α are varied. We refer the readers to ref. 2 for an exhaustive treatment. The dynamical properties of a driven spin-boson system in the strongly damped and in the incoherent regimes, are well described within the so-called noninteracting-Blip approximation (NIBA). Furthermore, the NIBA captures well the dynamics of a symmetric ($\varepsilon_0 = 0$) spin-boson system in the whole parameter regime. The NIBA approximation provides a generalized master equation (GME) for the evolution of the population difference $P(t)$ with rates in second order in the bare tunneling splitting Δ but nonperturbative in α . Accounting for the presence of time dependent fields, the GME explicitly reads

$$\dot{P}(t) = \int_{t_0}^t dt' [\mathcal{K}^-(t, t') - \mathcal{K}^+(t, t') P(t')]. \quad (10)$$

The NIBA kernels \mathcal{K}^\pm , averaged over a pump period, are given by

$$\mathcal{K}^+(t, t') = h^+(t - t') \cos[\zeta(t, t')], \quad (11)$$

$$\mathcal{K}^-(t, t') = h^-(t - t') \sin[\zeta(t, t')], \quad (12)$$

with

$$h^+(t) = \Delta^2 e^{-Q(t)} \cos[Q''(t)] J_0 \left[\frac{2\varepsilon_d}{\omega_d} \sin\left(\frac{\omega_d t}{2}\right) \right], \quad (13)$$

$$h^-(t) = \Delta^2 e^{-Q(t)} \sin[Q''(t)] J_0 \left[\frac{2\varepsilon_d}{\omega_d} \sin\left(\frac{\omega_d t}{2}\right) \right]. \quad (14)$$

The function $Q(t) = Q'(t) + iQ''(t)$ is the environmental correlation function. For the Ohmic spectral density function $G(\omega) = 2\alpha\omega \exp(-\omega/\omega_c)$, α being the dimensionless coupling strength and ω_c a high frequency cutoff, and in the scaling limit $\hbar\omega_c \gg \beta^{-1} = k_B T$, these functions have an explicit form²

$$Q'(t) = 2\alpha \ln \left[\sqrt{1 + \omega_c^2 t^2} \frac{\sinh(\pi t/\hbar\beta)}{\pi t/\hbar\beta} \right], \quad (15)$$

$$Q''(t) = 2\alpha \arctan(\omega_c t). \quad (16)$$

The above formulas are accurate in all coupling regimes, provided that the cutoff frequency is large with respect to the other frequency scales involved. In the long-time limit ($t/\hbar\beta \gg 1$) the real part of $Q(t)$ assumes the form $Q'(t) \sim t/\tau_{\text{env}} + \text{const.}$, where $\tau_{\text{env}} = (2\pi\alpha k_B T/\hbar)^{-1}$. Thus the latter quantity determines the memory time of the kernels \mathcal{K}^\pm in Eqs. (11) and (12).

The dynamical phase entering the kernels reads

$$\zeta(t, t') = (t - t')\epsilon_0 + \frac{\epsilon_p}{\omega_p} \{ \sin(\omega_p t) - \sin[\omega_p(t')] \}. \quad (17)$$

Note that in the absence of the probe field, $\epsilon_p = 0$, the pump-averaged kernels depend only on the difference $t - t'$, i.e., $\mathcal{K}^\pm(t, t') = \mathcal{K}^\pm(t - t')$, as in the static case. The latter is then recovered by additionally setting $\epsilon_d = 0$. On the other hand, the probe-only setup is described by Eq. (10) upon setting $\epsilon_d = 0$ in Eqs. (13) and (14). The dynamics shown in the insets of Fig. 2a–c are based on the numerical solution of the GME (10) for $\epsilon(t) = 0$, whereas in the time evolution of $P(t)$ vs. pump power shown in panels c, d, and g of Fig. 3, only the probe field is set to zero.

The linear susceptibility. The linear susceptibility is related to the asymptotic probability difference by

$$P^{\text{as}}(t) = P_0 + \hbar\epsilon_p [\chi(\omega_p)e^{i\omega_p t} + \chi(-\omega_p)e^{-i\omega_p t}], \quad (18)$$

where, in the NIBA, P_0 reduces to the equilibrium value $P_{\text{eq}} = \tanh(\hbar\epsilon_0/2k_B T)$ in the absence of pump driving. The transmission $\mathcal{T}(\omega_p)$ and the susceptibility $\chi(\omega_p)$ shown in the theoretical plots of Figs. 2 and 3 are calculated by means of the exact NIBA expression¹²

$$P_0 = \frac{K^-(0)}{K^+(0)}, \quad \chi(\omega_p) = \frac{H^+(\omega_p) - H^-(\omega_p)P_0}{i\omega_p + K^+(i\omega_p)}, \quad (19)$$

with superscripts \pm denoting symmetric/antisymmetric functions of ϵ_0 . For our pump-probe case we find

$$H^+(\omega_p) = \frac{1}{\hbar\omega_p} \int_0^\infty dt e^{-i\omega_p t/2} \sin\left(\frac{\omega_p t}{2}\right) h^-(t) \cos(\epsilon_0 t), \quad (20)$$

$$H^-(\omega_p) = \frac{-1}{\hbar\omega_p} \int_0^\infty dt e^{-i\omega_p t/2} \sin\left(\frac{\omega_p t}{2}\right) h^+(t) \sin(\epsilon_0 t), \quad (21)$$

$$K^+(\lambda) = \int_0^\infty dt e^{-\lambda t} h^+(t) \cos(\epsilon_0 t), \quad (22)$$

$$K^-(\lambda) = \int_0^\infty dt e^{-\lambda t} h^-(t) \sin(\epsilon_0 t). \quad (23)$$

Here $K^\pm(\lambda) = \int_0^\infty dt e^{-\lambda t} \mathcal{K}^\pm(t)$ are the Laplace transforms of the pump-averaged kernels in Eqs. (11) and (12) with $\epsilon_p = 0$. The kernels $K^\pm(\lambda)$ are related to the forward and backward rates $K^{f/b}(\lambda)$, introduced in Eq. (6), by $K^\pm = K^f \pm K^b$. Also, the incoherent rates for the static case are defined as $k^{f/b} = K^{f/b}(\lambda = 0, \epsilon_d = 0)$. For devices I and II, in the absence of pump driving, we analytically evaluated the integrals in Eqs. (20), (21), (22), and (23) and used the resulting expressions in the susceptibility χ , Eq. (19), to perform fits to the data. In the limit $\omega_p \tau_{\text{env}} \ll 1$, Eq. (19) simplifies to Eq. (8) of the main text (see the Supplementary Note 4).

Coherent-to-incoherent transition. In the absence of probe driving, $\epsilon_p = 0$, the population difference $P(t)$ is conveniently obtained by introducing the Laplace transform $\hat{P}(\lambda) = \int_0^\infty dt e^{-\lambda t} P(t)$. From Eq. (10) one finds

$$\hat{P}(\lambda) = \frac{1 + K^-(\lambda)/\lambda}{\lambda + K^+(\lambda)}. \quad (24)$$

The pole in $\lambda = 0$ determines the asymptotic value $P_0 = K^-(0)/K^+(0)$ reached at long times. The solution of the equation $\lambda + K^+(\lambda) = 0$ yields information on the transient dynamics. In the underdamped regime, complex solutions yield the renormalized tunneling frequency with associated dephasing rate. In the incoherent regime, the long-time dynamics is ruled by a single exponential decay with relaxation rate $\gamma_d \equiv K^+(\lambda = 0)$, see Eq. (22).

Let us focus exemplarily on the undriven spin-boson system at the symmetry point $\epsilon_0 = 0$. Then, an expansion around $\lambda = 0$ yields a quadratic equation for the poles of $\hat{P}(\lambda)$ ³³. In the coherent regime the roots are complex conjugated, $\lambda_{1,2} = -\gamma \pm i\Omega(T)$, while they are real in the incoherent regime (cf. insets in Fig. 2a–c). The temperature T^* at which the oscillation frequency $\Omega(T)$ vanishes determines the transition between the coherent and incoherent regimes. For weak coupling one finds for example $\Omega = \Delta_r(1 - \pi\alpha\hbar\Delta_r/k_B T)$ with

$$\Delta_r = \Delta(\Delta/\omega_c)^{\alpha/(1-\alpha)} g(\alpha) \quad (25)$$

and $g(\alpha) = [\Gamma(1 - 2\alpha)\cos(\pi\alpha)]^{1/2(1-\alpha)}$. This allows the estimate $T^*(\alpha) \approx \hbar\Delta_r(k_B\alpha)^{-1}$ when $\alpha \ll 1$. For general $\alpha < 1$ it is given by

$$T^*(\alpha) \approx \frac{\hbar\Delta_r}{k_B} [\Gamma(\alpha)/\alpha\Gamma(1-\alpha)]^{1/2(1-\alpha)}, \quad (26)$$

where $\Gamma(x)$ is the Euler Gamma function. This approximate expression matches well the numerically calculated crossover temperature shown in Fig. 1c. The coherent-incoherent transition temperature $T^*(\alpha)$ depicted there is established, for $\alpha < 0.5$, by using Eq. (19), with numerically evaluated kernels, whereas the point at $\alpha = 0.5$ is individuated by the exact result $k_B T^*(\alpha = 0.5)/\hbar\Delta = \Delta/2\omega_c$ ². Further details are found in the Supplementary Note 9.

Data availability. The data that support the main findings of this study are available from the corresponding author upon request.

Received: 7 December 2017 Accepted: 28 February 2018

Published online: 11 April 2018

References

- Leggett, A. J. et al. Dynamics of the dissipative two-state system. *Rev. Mod. Phys.* **59**, 1–85 (1987).
- Weiss, U. *Quantum dissipative systems* 4th edn (World Scientific, Singapore, 2012).
- Golding, B., Zimmerman, M. N. & Coppersmith, S. N. Dissipative quantum tunneling of a single microscopic defect in a mesoscopic metal. *Phys. Rev. Lett.* **68**, 998–1001 (1992).
- Golding, B., Graebner, J. E., Kane, A. B. & Black, J. L. Relaxation of tunneling systems by conduction electrons in a metallic glass. *Phys. Rev. Lett.* **41**, 1487–1491 (1978).
- Han, S., Lapointe, J. & Lukens, J. E. Observation of incoherent relaxation by tunneling in a macroscopic two-state system. *Phys. Rev. Lett.* **66**, 810–813 (1991).
- Morillo, M. & Cukier, R. I. Solvent effects on proton transfer reactions. *J. Chem. Phys.* **91**, 857–863 (1989).
- Thorwart, M., Eckel, J., Reina, J. H., Nalbach, P. & Weiss, S. Enhanced quantum entanglement in the non-Markovian dynamics of biomolecular excitons. *Chem. Phys. Lett.* **478**, 234–237 (2009).
- Huelga, S. F. & Plenio, M. B. Vibrations, quanta and biology. *Contemp. Phys.* **54**, 181–207 (2013).
- Forn-Díaz, P. et al. Ultrastrong coupling of an artificial atom to an electromagnetic continuum. *Nat. Phys.* **13**, 39–43 (2017).
- Peropadre, B., Zueco, D., Porras, D. & Garca-Ripoll, J. J. Nonequilibrium and nonperturbative dynamics of ultrastrong coupling in open lines. *Phys. Rev. Lett.* **111**, 243602 (2013).
- Yoshihara, F. et al. Superconducting qubit-oscillator circuit beyond the ultrastrong-coupling regime. *Nat. Phys.* **13**, 44–47 (2017).
- Grifoni, M. & Hänggi, P. Driven quantum tunneling. *Phys. Rep.* **304**, 229–358 (1998).
- Nakamura, Y., Pashkin, Yu. A. & Tsai, J. S. Rabi oscillations in a Josephson-Junction charge two-level system. *Phys. Rev. Lett.* **87**, 246601 (2001).
- Wilson, C. M. et al. Coherence times of dressed states of a superconducting qubit under extreme driving. *Phys. Rev. Lett.* **98**, 257003 (2007).
- Wilson, C. M. et al. Dressed relaxation and dephasing in a strongly driven two-level system. *Phys. Rev. B* **81**, 024520 (2010).
- Oliver, W. D. et al. Mach-Zehnder interferometry in a strongly driven superconducting qubit. *Science* **310**, 1653–1657 (2005).
- Sillanpää, M., Lehtinen, T., Paila, A., Makhlin, Y. & Hakonen, P. Continuous-time monitoring of Landau-Zener interference in a Cooper pair box. *Phys. Rev. Lett.* **96**, 187002 (2006).
- Berns, D. et al. Amplitude spectroscopy of a solid-state artificial atom. *Nature* **455**, 51–57 (2008).
- Deng, C. et al. Observation of Floquet states in a strongly driven artificial atom. *Phys. Rev. Lett.* **115**, 133601 (2015).
- Mooij, J. E. et al. Josephson persistent-current qubit. *Science* **285**, 1036–1039 (1999).
- Kubo, R. Statistical mechanics of irreversible processes. *J. Phys. Soc. Jpn.* **12**, 570–586 (1957).
- Grifoni, M., Sassetti, M., Stockburger, J. & Weiss, U. Nonlinear response of a periodically driven damped two-level system. *Phys. Rev. E* **48**, 3497–3509 (1993).
- Restrepo, S., Cerillo, J., Bastidas, V. M., Angelakis, D. G. & Brandes, T. Driven open quantum systems and Floquet stroboscopic dynamics. *Phys. Rev. Lett.* **117**, 250401 (2016).
- Grifoni, M., Sassetti, M., Hänggi, P. & Weiss, U. Cooperative effects in the nonlinearly driven spin-boson system. *Phys. Rev. E* **52**, 3596 (1995).
- Daz-Camacho, G., Bermudez, A. & Garca-Ripoll, J. J. Dynamical polaron ansatz: a theoretical tool for the ultra-strong coupling regime of circuit QED. *Phys. Rev. A* **93**, 043843 (2016).
- Shi, T., Chang, Y. & Garcia-Ripoll, J. J. Ultrastrong coupling few-photon scattering theory. Preprint at <http://arxiv.org/abs/1701.04709> (2017).

27. Shevchenko, S. N., Ashhab, S. & Nori, F. Landau-Zener-Stückelberg interferometry. *Phys. Rep.* **492**, 1–30 (2010).
28. Hausinger, J. & Grifoni, M. Dissipative two-level system under strong ac-driving: a combination of Floquet and Van Vleck perturbation theory. *Phys. Rev. A* **81**, 022117 (2010).
29. Grossmann, F., Dittrich, T., Jung, P. & Hänggi, P. Coherent destruction of tunneling. *Phys. Rev. Lett.* **67**, 516–519 (1991).
30. Dakhnovski, Y. & Coalson, R. D. Manipulating reactant-product distributions in electron transfer reactions with a laser field. *J. Chem. Phys.* **103**, 2908–2916 (1995).
31. Goychuk, I. A., Petrov, E. G. & May, V. Control of the dynamics of a dissipative two-level system by a strong periodic field. *Chem. Phys. Lett.* **253**, 428–437 (1996).
32. Caldeira, O. & Leggett, A. J. Quantum tunneling in a dissipative system. *Ann. Phys.* **149**, 374–456 (1987).
33. Weiss, U. & Grabert, H. Effects of temperature and bias on macroscopic quantum coherence. *Europhys. Lett.* **2**, 667–672 (1986).

Acknowledgements

The authors acknowledge financial support by the Deutsche Forschungsgemeinschaft via SFB 631, NSERC of Canada, the Canadian Foundation for Innovation, the Ontario Ministry of Research and Innovation, Industry Canada and Canadian Microelectronics Corporation. L.M. gratefully acknowledges financial support by the Angelo Della Riccia Foundation and hospitality by the Regensburg University during the early stages of the project. P.F.-D. is supported by the Beatriz de Pinós fellowship (2016BP00303). The authors thank J.J. Garcia-Ripoll, B. Peropadre, and P. Hänggi for fruitful discussions, and S. Chang, A. M., and C. Deng for help with device fabrication and with the measurement setups.

Author contributions

L.M. and M.G. performed the theoretical analysis, with numerical simulations carried out by L.M. The experiments were designed and performed by P.F.-D., A.L., and C.M.W. The devices were fabricated by P.F.-D., J.-L.O., M.A.Y., and M.R.O. contributed to device design and fabrication. R.B. assisted in numerical modeling of the device. The manuscript

was mainly written by M.G. with critical comments provided by all authors. The supplementary information was mainly written by L.M.. The experimental work was a collaboration between the labs led by A.L. and C.M.W.

Additional information

Supplementary Information accompanies this paper at <https://doi.org/10.1038/s41467-018-03626-w>.

Competing interests: The authors declare no competing interests.

Reprints and permission information is available online at <http://npg.nature.com/reprintsandpermissions/>

Publisher's note: Springer Nature remains neutral with regard to jurisdictional claims in published maps and institutional affiliations.



Open Access This article is licensed under a Creative Commons Attribution 4.0 International License, which permits use, sharing, adaptation, distribution and reproduction in any medium or format, as long as you give appropriate credit to the original author(s) and the source, provide a link to the Creative Commons license, and indicate if changes were made. The images or other third party material in this article are included in the article's Creative Commons license, unless indicated otherwise in a credit line to the material. If material is not included in the article's Creative Commons license and your intended use is not permitted by statutory regulation or exceeds the permitted use, you will need to obtain permission directly from the copyright holder. To view a copy of this license, visit <http://creativecommons.org/licenses/by/4.0/>.

© The Author(s) 2018