



Early View

Original research article

Immunophenotypes of anti-SARS-CoV-2 responses associated with fatal COVID-19

Julij Šelb, Barbara Bitežnik, Urška Bidovec Stojković, Boštjan Rituper, Katarina Osolnik, Peter Kopač, Petra Svetina, Kristina Cerk Porenta, Franc Šifrer, Petra Lorber, Darinka Trinkaus Leiler, Tomaž Hafner, Tina Jerič, Robert Marčun, Nika Lalek, Nina Freljih, Mojca Bizjak, Rok Lombar, Vesna Nikolić, Katja Adamič, Katja Mohorčič, Sanja Grm Zupan, Irena Šarc, Jerneja Debeljak, Ana Koren, Ajda <SNM>Demšar Luzar, Matija Rijavec, Izidor Kern, Matjaž Fležar, Aleš Rozman, Peter Korošec

Please cite this article as: Šelb J, Bitežnik B, Bidovec Stojković U, *et al.* Immunophenotypes of anti-SARS-CoV-2 responses associated with fatal COVID-19. *ERJ Open Res* 2022; in press (<https://doi.org/10.1183/23120541.00216-2022>).

This manuscript has recently been accepted for publication in the *ERJ Open Research*. It is published here in its accepted form prior to copyediting and typesetting by our production team. After these production processes are complete and the authors have approved the resulting proofs, the article will move to the latest issue of the ERJOR online.

Copyright ©The authors 2022. This version is distributed under the terms of the Creative Commons Attribution Non-Commercial Licence 4.0. For commercial reproduction rights and permissions contact permissions@ersnet.org

Immunophenotypes of anti-SARS-CoV-2 responses associated with fatal COVID-19

Julij Šelb, M.D., Ph.D.^{1,2*}, Barbara Bitežnik, M.D.^{1,2*}, Urška Bidovec Stojković, Ph.D.¹, Boštjan Rituper, M.D., Ph.D.^{1,2}, Katarina Osolnik, M.D.¹, Peter Kopač, M.D.^{1,2}, Petra Svetina, M.D.¹, Kristina Cerk Porenta M.D.¹, Franc Šifrer M.D.¹, Petra Lorber M.D.^{1,2}, Darinka Trinkaus Leiler M.D.¹, Tomaž Hafner M.D.^{1,2}, Tina Jerič M.D.¹, Robert Marčun M.D., Ph.D.^{1,2}, Nika Lalek M.D., Ph.D.^{1,2}, Nina Frelj M.D.¹, Mojca Bizjak M.D.¹, Rok Lombar M.D.¹, Vesna Nikolić M.D.^{1,2}, Katja Adamič M.D.¹, Katja Mohorčič M.D.¹, Sanja Grm Zupan M.D.¹, Irena Šarc, M.D.^{1,2}, Jerneja Debeljak MSc¹, Ana Koren, Ph.D.¹, Ajda Demšar Luzar MSc¹, Matija Rijavec, Ph.D.^{1,3}, Izidor Kern M.D.¹, Matjaž Fležar M.D., Ph.D.^{1,2}, Aleš Rozman, M.D., Ph.D.^{1,2}, and Peter Korošec, Ph.D.^{1,4}

¹University Clinic of Respiratory and Allergic Diseases, Golnik, Slovenia; ²Medical Faculty, University of Ljubljana, Ljubljana, Slovenia; ³Biotechnical Faculty, University of Ljubljana, Ljubljana, Slovenia; ⁴Faculty of Pharmacy, University of Ljubljana, Ljubljana, Slovenia

*These authors contributed equally.

Correspondence: Peter Korošec Ph.D.; University Clinic of Respiratory and Allergic Diseases Golnik; Golnik 36, 4204 Golnik, Slovenia; E-mail: peter.korosec@klinika-golnik.si

Summary

By employing unsupervised machine learning we identified multiple anti-SARS-CoV-2 immune response profiles and observed major differences in COVID-19 mortality between these profiles.

ABSTRACT

Background: The relationship between anti-SARS-CoV-2 humoral immune response, pathogenic inflammation, lymphocytes and fatal COVID-19 is poorly understood.

Methods: Longitudinal prospective cohort of hospitalized patients with COVID-19 (N=254) was followed up to 35 d after admission (median, 8 d). We measured early anti-SARS-CoV-2 S1 antibody IgG levels and dynamic (698 samples) of quantitative circulating T, B, NK lymphocyte subsets and serum interleukin-6 response. We used machine learning to identify patterns of the immune response, and related these patterns to the primary outcome of 28-day mortality in analyses adjusted for clinical severity factors.

Results: Overall, 45 (18%) patients died within 28 days after hospitalization. We identified six clusters representing discrete anti-SARS-CoV-2 immunophenotypes. Clusters differed considerably in COVID-19 survival. Two clusters, the anti-S1-IgG^{lowest}T^{lowest}B^{lowest}NK^{mod}IL-6^{mod}, and the anti-S1-IgG^{high}T^{low}B^{mod}NK^{mod}IL-6^{highest} had a high risk of fatal COVID-19 (HR, 3.36–21.69; 95% CI, 1.51–163.61 and HR, 8.39-10.79; 95% CI, 1.20-82.67; P≤0.03, respectively). The anti-S1-IgG^{highest}T^{lowest}B^{mod}NK^{mod}IL-6^{mod} and anti-S1-IgG^{low}T^{highest}B^{highest}NK^{highest}IL-6^{low} cluster were associated with moderate risk of mortality. In contrast, two clusters the anti-S1- anti-S1-IgG^{high}T^{high}B^{mod}NK^{mod}IL-6^{low} and anti-S1-IgG^{highest}T^{highest}B^{high}NK^{high}IL-6^{lowest} clusters were characterized by a very low risk of mortality.

Conclusions: By employing unsupervised machine learning we identified multiple anti-SARS-CoV-2 immune response clusters and observed major differences in COVID-19 mortality between these clusters. Two discrete immune pathways may lead to fatal COVID-19. One is driven by impaired or delayed antiviral humoral immunity, independently of hyper-inflammation,

and the other may arise through excessive IL-6 mediated host inflammation response, independently of the protective humoral response. Those observations could be explored further for application in clinical practice.

Keywords: SARS-CoV-2, COVID-19, anti-SARS-CoV-2 spike 1 IgG antibodies, T cells, IL-6, machine learning

Abbreviations:

C1: Cluster 1

C2: Cluster 2

C3: Cluster 3

C4: Cluster 4

C5: Cluster 5

C6: Cluster 6

CD4: Cluster of differentiation 4

CD8: Cluster of differentiation 8

Covid-19: Coronavirus disease 2019

IL-6: interleukin-6

IQR: Interquartile range

SARS-CoV-2: Severe acute respiratory syndrome coronavirus 2

INTRODUCTION

SARS CoV-2 can cause a range of clinical manifestations, from asymptomatic to severe acute respiratory disease, and several studies have suggested that dysregulation of innate and adaptive immune responses is likely to contribute to disease severity.¹⁻⁹ Induction of more potent neutralizing antibodies during SARS-CoV-2 infection has been shown to predict COVID-19 survival², and delayed antibody response correlated with severe disease.⁹ T cells are key orchestrators of anti-viral immune responses¹⁰ and an imbalance of regulatory and cytotoxic SARS-CoV-2-reactive CD4+ T cells have been demonstrated in hospitalized COVID-19 patients.⁴ Recruitment and expansion of T cells in the alveolar space of COVID-19 patients¹¹ and other affected organs, such as in the cerebral spinal fluid of neuro-COVID-19 patients¹², further suggests the importance of T cell response. Consequently, it has been observed that COVID-19 is accompanied by lymphocytopenia¹³ and decreases in circulating T cells.^{3,5,14-17} Uncontrolled inflammation may also contribute to COVID-19 severity.⁷ This hypothesis is consistent with increased C-reactive protein, ferritin, D-dimer, cytokines, and chemokines.^{1,3,5,8,13} Notably, high serum IL-6 and TNF- α levels remained independent and significant predictors of patient survival, also when adjusted for clinical severity factors.¹ However, the relationship between humoral responses, T cell responses, and uncontrolled inflammation among patients with COVID-19, and how patterns of these responses affect the trajectories of COVID-19 are poorly understood.

To bridge this gap, we aimed to use unsupervised machine learning to identify the immunological properties of fatal COVID-19 and thus get a better understanding of the fatal disease. Since in unsupervised machine learning (compared to supervised learning) the outcome of interest is hidden to the algorithm at the time of algorithm training there is no risk to over fit the model to the outcome of interest. Therefore the detected patterns are likely the result of some

fundamental biological property of the disease thus giving a unique insight into pathophysiology and possible treatment venues of the disease.

We hypothesized that there are multiple (immune)phenotypes of humoral^{2,9}, lymphocytes^{3-5,11-17} and inflammatory^{1,3,5,8,13} immune responses to SARS CoV-2 that differ in their relationship to outcome trajectories of COVID-19 and that unsupervised data-driven techniques may help identify such immunophenotype patterns by determinants of IgG antibodies to SARS-CoV-2 anti spike 1, quantitative lymphocyte subsets, and IL-6 levels. To address our hypothesis we characterized those immune patterns in a longitudinal hospitalized prospective cohort of patients with COVID-19 and then investigated the association of these patterns with mortality within 28 days after hospitalization. We also included 40 non-hospitalized subjects with prior COVID-19 infection to serve as (recovered) controls.

METHODS

Study design and participants

Hospitalized study subjects

A prospective observational study of COVID-19 was carried out during the second pandemic wave (September–December 2020) of SARS-CoV-2 in Slovenia. We included consecutively admitted adults with nasopharyngeal swabs who tested positive for SARS-CoV-2 by reverse transcriptase quantitative polymerase chain reaction (PCR). All patients or their legally authorized representatives provided informed consent. Of 268 patients, 14 were excluded because they had already died or had been discharged after inpatient admission within 48 hours

after the presentation. In addition to patient's requirements for supplemental oxygen at admission and/or radiological signs of COVID-19 pneumonia, the following criteria were adhered to when deciding whether to admit the patient to the hospital: i.) age \geq 65 years, ii.) BMI \geq 30, iii.) presence of chronic diseases including chronic kidney disease, diabetes, cardiovascular diseases, chronic lung diseases (asthma, COPD, interstitial lung diseases etc.), cancer, advanced liver disease etc. and iv.) presence of immune insufficiency (i.e. recent chemotherapy, patients on certain immunosuppressants, patients with transplantation etc.).

Thus we longitudinally profiled the immune responses against SARS-CoV-2 in 254 hospitalized COVID-19 patients. The total number of collected blood samples was 698, with a median of 2 (IQR, 4) samples per patient in an interval of a median of 3 (IQR, 4) days (Table 1, Supplement Figures E2A-G). The median time of hospitalization was 8 days (IQR, 8) and none of the patients was transferred to another facility (Table 1). Data on demographics, including age and sex, comorbidities, clinical signs, interventions, and outcomes are described in Table 1 and the online supplement.

Non-hospitalized control subjects

A group of 40 adult individuals with prior COVID-19 infection confirmed by a nasopharyngeal swab PCR test but who weren't hospitalized because of the disease, served as controls. In all control subjects, we collected a blood sample in a median of 60 days (range 20 to 175 days) after conformation of SARS-CoV-2 infection. All control subjects provided informed consent. Data on demographics, including age and sex, are described in Supplement Table E1 and in the online Supplement.

The study protocol was approved by the Slovenian National Medical Ethics Committee (No. 0120-201/2020/7 and 0120-333/2020/3) and was registered at ClinicalTrials.gov (NCT04679428).

Anti-SARS-CoV-2 spike 1 IgG antibodies, absolute quantitation of lymphocyte subsets, and IL-6 measurements

IgG antibodies to SARS-CoV-2 anti spike 1 were quantified using IDK anti-SARS-CoV-2 ELISA Kit (Immundiagnostik AG Bensheim, Germany) in a single serum sample per patient (254 samples) collected median 4 days after admission. Lymphocyte subsets were quantified in peripheral blood with EDTA using BD (Franklin Lakes, NJ) Multitest™, a 6-color direct immunofluorescence reagent, BD Trucount™ tubes, and BD FACSCanto™ II flow cytometer with BD FACSCanto clinical software version 3.1 in 698 longitudinally collected blood samples. For all samples, we performed staining and flow cytometric analyses on the same day as blood venipuncture. Decreases in circulating blood lymphocyte subsets were defined as the lowest absolute counts recorded after admission to the hospital. IL-6 in serum samples was quantified using Immulite 2000 XPi (Siemens Healthcare GmbH, Germany) in 698 longitudinally collected serum samples. IL-6 increase was defined as the maximal serum level recorded after admission to the hospital. For all sampling from all patients, the timing of blood collection was in the morning, between 7 and 10.

In non-hospitalized control subjects, we quantified IgG antibodies to SARS-CoV-2 anti-spike 1, quantitative lymphocyte subsets, and IL-6 from a single sample per subject.

The outcome measure, regression and cluster analysis, and clinical association of the immune profiles

The primary outcome was mortality within 28 days after admission. All variables were analyzed using Cox regression models in a stepwise manner – first univariate and then multivariate regression using only significant univariate predictors. Furthermore, we used a Gaussian mixture model¹⁸ to cluster patients based on their antibody^{2,9}, circulating lymphocyte subsets^{3,5,14–17}, and serum interleukin-6^{1,3,5,8,13} immune responses to SARS CoV-2. Before clustering, all variables were normalized. The model was fitted by the expectation-maximization algorithm and the optimal number of clusters was chosen using the Bayesian information criterion. We then compared the primary outcome between different clusters using multivariable Cox proportional hazard models, adjusted for major clinical severity factors that were significant predictors of death in the above mentioned regression analysis, and Kaplan–Meier survival curves were constructed to visualize mortality over the 28 days across clusters. Further details regarding data analysis are described in the Online Supplement. The analysis was carried out using R software^{19,20}.

RESULTS

Participant, demographic data, and dynamic characterization of anti-SARS-CoV-2 immune responses

The mean age of the patients was 71.8 ± 13.9 years, and 138 (54.3%) were male. At admission, 133 (52.4%) were receiving oxygen (without invasive mechanical ventilation) –

WHO severity ordinal scale 3; 121 (47.6%) were not receiving oxygen – WHO severity ordinal scale 2²¹. A history of at least one major coexisting recorded illness was present in 213 (84%) patients. A total of 148 patients (58%) received dexamethasone²², 10 (4%) received methylprednisolone²³, and 28 (11%) received remdesivir²⁴. The decision to prescribe medications was at the discretion of the treatment team of each patient. During the study inclusion and patient follow-up (September-December 2020), there were no other medications available for the treatment of patients with COVID-19, and no vaccines were authorized in the European Union to prevent COVID-19. None of the patients was included in studies for approval of novel medications or vaccines.

During a follow-up of 3 to 26 days after admission, 45 patients (18%) died (8 subsequently after intubation). During a follow-up of 3 to 35 days after presentation, 209 patients had survived hospital discharge (7 after successful cessation of invasive mechanical ventilation). Six of those patients were discharged more than 28 days after the presentation (during a follow-up of 29 to 35 days; one after successful cessation of invasive mechanical ventilation). There was a significant age difference, and respiratory support at presentation (WHO severity ordinal scale)²¹ between recovered patients and patients who had died, however, there were no significant differences in any other demographics or comorbidities (Table 1).

Overall, patients who progressed to the primary endpoint of death at 28 days showed a markedly lower level of anti-SARS-CoV-2 spike 1 IgG antibodies in comparison to patients recovered to hospital discharge (median (IQR) 381 (2258) vs 2701 (2080) pg/ml, $P < 0.0001$; Supplement Figure E1A). Patients who progressed to the primary endpoint also showed significantly lower frequencies of anti-SARS-CoV-2 spike 1 IgG antibody positivity (62.2% vs 91.9% respectively; $P < 0.0001$), according to the 175 ng/ml positivity threshold (Figure E1B).

Longitudinal immune profiling revealed that the patients who progressed to the primary endpoint showed significant decreases in circulating T cells and CD4 and CD8 subpopulations of T cells, and an increase in serum IL-6 in comparison to patients who recovered to hospital discharge, with an overall median (IQR) cell counts of 415 (310) vs 797 (630), 275 (225) vs 521 (422) and 119 (134) vs 229 (235) cells/ μ l, and median (IQR) IL-6 concentration of 59 (85) vs 13.8 (25.3) pg/ml respectively; $P < 0.0001$) in 698 samples (Supplement Figures E2A-G). There was also a significant reduction for B and NK cells (overall median 84 (101) vs 134 (135) and 95 (114) vs 145 (128) cells/ μ l; $P < 0.0001$) (Supplement Figures E2A,E and F). Furthermore, the differences (median (IQR)) in the lowest absolute counts or highest IL-6 between patients who progressed to the primary endpoint and those who recovered to hospital discharge were 325 (239) vs 627 (506), 215 (179) vs 387 (330) and 100 (114) vs 188 (205) cells/ μ l for T and CD4 and CD8 T cells and 82.1 (138.7) vs 23.2 (44.2) pg/ml for IL-6 ($P < 0.0001$) (Supplement Figure E3). Less marked differences were observed for the lowest B and NK cell counts (68 (96) vs 101 (100), 94 (114) vs 122 (97), respectively; ($P \leq 0.04$) (Supplement Figure E3).

The average age of non-hospitalized control subjects was 45.6 years (+/- 12.1 years); there were 22 (55%) males (Supplement Table E1). Results of comparison of the immunological parameters between non-hospitalized control subjects sampled a median of 60 days after SARS-CoV-2 infection and hospitalized recovered or deceased COVID-19 patients are shown in Supplement Figures E1A-B, E2A, and E3. The level and positivity of anti-SARS-CoV-2 spike 1 IgG antibodies were comparable between non-hospitalized control subjects and hospitalized patients that had recovered; however, they were significantly higher than in deceased hospitalized individuals ($P < 0.0001$) (Supplement Figures E1A-B). Furthermore, non-hospitalized control subjects had markedly higher CD3 T, CD4 T, CD8 T, B, and NK cell counts and lower IL-6

levels than hospitalized recovered or deceased individuals ($P < 0.01$) (Supplement Figures E2A and E3).

Predictors of fatal COVID-19

We tested the variables in univariate Cox regression models and early humoral response (anti-SARS-CoV-2 spike 1 IgG antibodies, hazard ratio (HR), 0.9993; 95% CI, 0.9990 to 0.9996) was associated with the primary outcome (Supplement Table E2). For circulating quantitative lymphocyte subsets there was a significant association for decreases (the lowest absolute count after admission) of T cells (HR, 0.9965; 95% CI, 0.9951 to 0.9979), and CD4 (HR, 0.9948; 95% CI, 0.9926 to 0.9971; < 500 CD4+cells/mm³: HR, 8.9; 95% CI, 2.16 to 36.8, and < 200 CD4+cells/mm³: HR, 3.8; 95% CI, 2.13 to 6.86) and CD8 subpopulation of T cells (HR, 0.9936; 95% CI, 0.9903 to 0.9969) and endpoint of death. However, there was no association between B and NK cells decreases and death. (Supplement Table E2). An increase in serum IL-6 (the maximal serum level recorded after admission) was also associated with the primary outcome (HR, 1.0022; 95% CI, 1.0012 to 1.0032). Comparable, as in previous studies^{22,24} older patients (HR, 1.09; 95% CI, 1.05 to 1.13) and those who received respiratory support (WHO severity ordinal scale 3) at the time of presentation (HR, 5.7; 95% CI, 2.55 to 12.77), were also more likely to have had a primary endpoint event (Table E2). However, there were no associations between the primary outcome, and coexisting diseases, BMI, and glucocorticoid use.

Associations that were significant using univariate analysis were then estimated by multivariable Cox regression model. Using multivariable Cox model anti-SARS-CoV-2 spike 1 IgG antibodies (HR, 0.9994; 95% CI, 0.9991 to 0.9996), decreases in circulating T cells (HR,

0.9977; 95% CI, 0.9963 to 0.9991) or CD4 (HR, 0.9965; 95% CI, 0.9943 to 0.9988) or CD8 (HR, 0.996; 95% CI, 0.9929 to 0.9991) subpopulations of T cells and increase in IL6 (HR, 1.0014; 95% CI, 1.0001 to 1.0027) remained significant predictors of the primary endpoint independent of older age (HR, 1.0652; 95% CI, 1.0294 to 1.1023) and WHO severity ordinal scale²¹ at the time of presentation (HR, 4.5264; 95% CI, 1.9594 to 10.4563) (Table E2).

Profiles of anti-SARS-CoV-2 immune responses

A six-cluster model provided an optimal solution of the Gaussian mixed model algorithm (VVI) according to the Bayesian Information Criterion statistic (Figures 1 and 2). Figure 3 shows the individual patterns of anti-SARS-CoV-2 spike 1 IgG antibodies, circulating T cell, B cell, NK cell counts, and serum IL-6 across the six clusters in terms of the normalized value of each parameter. We assigned the relative expression in clusters as “highest,” “high,” “moderate“, “low,” or “lowest” (Figure 3 and Table 2). Cluster 1 (C1, n=51, 20.1%) was characterized by the lowest anti-SARS-CoV-2 spike 1 IgG antibodies and T and B cell counts, and moderate NK cells and IL-6 level (anti-S1-IgG^{lowest}T^{lowest}B^{lowest}NK^{mod}IL-6^{mod}). Cluster 2 (C2, n=21, 8.3%) was characterized by the highest IL-6 level, high anti-S1-IgG, low T cells, and moderate NK and B cells (anti-S1-IgG^{high}T^{low}B^{mod}NK^{mod}IL-6^{highest}). Patients in cluster 3 (C3, n=35, 13.8%) had the highest anti-S1-IgG and the lowest T cell counts moderate B and NK cells and, IL-6 level (anti-S1-IgG^{highest}T^{lowest}B^{mod}NK^{mod}IL-6^{mod}). Cluster 4 was the smallest (C4, n=15, 5.9%), and was characterized by low anti-S1 IgG and IL-6 and the highest T, B and NK cells (anti-S1-IgG^{low}T^{highest}B^{highest}NK^{highest}IL-6^{low}). Patients in cluster 5 (C5, n=82, 32.3%) and cluster 6 (C6, n=50, 19.7%) had high or the highest anti-S1-IgG and T cells, low or the lowest IL-6 and high or

moderate B and NK cells (anti-S1-IgG^{high}T^{high}B^{mod}NK^{mod}IL-6^{low} and anti-S1-IgG^{highest}T^{highest}B^{high}NK^{high}IL-6^{lowest}, respectively).

Characteristics of anti-SARS-CoV-2 immune response clusters

Demographic, baseline, and treatment features

Patients in C1, C2, and C3 were older (mean age: 75.3, 77, and 74.2 years, respectively) than patients in C4, C5, and C6 (mean age: 71.8, 70, and 67.5 years, respectively; P=0.003) (Table 1). Patients in C1 (14%) had more rheumatic disease than patients in C2, C3, C4, C5 and C6 (5%, 3%, 0%, 1% and 4%, respectively; P=0.03). Patients in C3 and C4 stayed longer in the hospital to discharge or death (median 13 and 12 days, respectively) than patients in C1, C2, C5, and C6 (median 8, 10, 6, and 7 days, respectively, P<0.0001). There was no significant association between cluster membership and sex, WHO severity ordinal scale at admission²¹, previous coexisting disease including type 2 diabetes, hypertension and heart diseases, chronic lung disease, cancer, chronic kidney disease, and the number of coexisting diseases, body mass index, and corticosteroids treatment (Table 1).

Fatal COVID-19

To test if anti-SARS-CoV-2 immune response clusters identified by employing unsupervised machine learning are associated with the risk of fatal COVID-19 independent of clinical severity factors we constructed a grid of Cox regression models. Thus we used age and WHO severity ordinal scale²¹ at admission, which were only non-immunological predictors of mortality in multivariable Cox regression (Table E2), together with cluster status as predictor

variables. Results of the regression models to investigate fatal COVID-19 outcomes in various clusters are shown in Tables 3A-B. Patients in the highest-risk C1 cluster (anti-S1-IgG^{lowest}T^{lowest}B^{lowest}NK^{mod}IL-6^{mod}) had 3.36, 15.34, and 21.69 times higher hazard of death due to COVID-19 (95% CI, 1.51-8.55 and 4.55-51.72; 2.89-163.61; P≤0.004) than patients in C4, C5, and C6, respectively. Patients in high-risk C2 (anti-S1-IgG^{high}T^{low}B^{mod}NK^{mod}IL-6^{highest}) had 8.39 and 10.97 times higher hazard of death due to COVID-19 (95% CI, 2.17-32.51 and 1.20-82.67; P≤0.03) than patients in C5 and C6, respectively. Patients in moderate-risk C3 (anti-S1-IgG^{highest}T^{lowest}B^{mod}NK^{mod}IL-6^{mod}) had 5.24 times higher hazard of death due to COVID-19 (95% CI, 1.34-20.48 P=0.02) than patients in C5. Similarly, patients in moderate-risk C4 (anti-S1-IgG^{low}T^{highest}B^{highest}NK^{highest}IL-6^{low}) cluster had 5.36 times higher hazard of death due to COVID-19 than patients in C5 cluster (95% CI, 1.08-26.67; P=0.04). When comparing moderate risk clusters C3 and C4 to cluster C6, the hazards of dying from COVID-19 were higher; however, they failed (due to small sizes) to reach statistical significance. Patients in C5 (anti-S1-IgG^{high}T^{high}B^{mod}NK^{mod}IL-6^{low}) and C6 (anti-S1-IgG^{highest}T^{highest}B^{high}NK^{high}IL-6^{lowest}) were at very low risk of fatal COVID-19, and this very low risk was comparable between the two clusters (HR, 1.66; 95% CI, 0.17-16.43; P=0.67). Since the similar risks of fatal COVID-19 between clusters C1 and C2, clusters C3 and C4, clusters C5 and C6, and since some clusters were small (C2: N=21, 8.3%, and C4: N=15, 5.9%) regression analysis was also performed comparing grouped clusters C1+C2, C3+C4, and C5+C6) (Table 3B). Patients in clusters C1+C2 had 2.67 and 13.73 times higher hazard of death due to COVID-19 (95% CI, 1.30-5.48 and 4.79-39.36; P≤0.008) than patients in clusters C3+C4 and C5+C6, respectively. Furthermore, patients in clusters C3+C4 had 5.90 times higher hazard of death due to COVID-19 (95% CI, 1.84-18.97; P=0.003) than patients in clusters C5+C6.

Kaplan–Meier estimates of mortality by day 28 were high, with more than 45% mortality in C1 (45.1%; 95% CI, 29.6% to 57.2%) and with almost 40% mortality in C2 (38.1%; 95% CI, 19% to 56.7%), and moderate with 20 % mortality (half the mortality of C1 and C2) in C3 (95% CI, 5.6% to 32.2%) and C4 (95% CI, 0% to 37.9%). In contrast, Kaplan–Meier estimates of mortality were very low in C5 and C6 (10 to 23-times lower as in C1 and C2, 5 to 10-times lower as in C3 and C4) with 3.7% mortality in C5 (95% CI, 0% to 7.6%) and 2 % mortality in C6 (95% CI, 0% to 5.8%) (Figure 4).

DISCUSSION

By employing unsupervised machine-learning approaches, we identified discrete immunophenotypes of anti-SARS CoV-2 responses represented by 6 clusters, which differed considerably in COVID-19 survival. Two clusters were associated with a high risk of fatal COVID-19 (38-45% mortality) and were defined as the lowest humoral response with the lowest circulating T cells (C1), or as high IL-6 inflammatory response (C2). In contrast, two clusters (C5 and C6) were associated with a very low risk (2-4% mortality) and were defined as high or highest humoral and T cells, with low or lowest IL-6. We also identified two clusters (C3 and C4) with moderate risk (20% mortality) characterized by unfavorable low humoral (C4) or lowest T cells (C3), but with favorable highest T cells (C4) and/or low (C4) or moderate (C3) IL-6 responses.

First studies suggested that anti-SARS-CoV-2 antibodies are higher in patients with severe disease²⁵. However, this association probably only reflected the more protracted disease course of the severe disease. In contrast, further longitudinal and larger studies^{26–28} have shown

that higher levels of antibodies targeting the spike protein (as opposed to targeting the nucleocapsid protein) if present early in disease development are predictors of favorable disease outcome and that the lack of humoral response is associated with deleterious disease course. This is likely because early humoral response helps in constraining the viral infection²⁷, preventing it to spread to other parts of the body and thus restricts the escalation of disease severity. As seen by our results and also by other recent studies²⁶⁻²⁸ impaired or delayed antiviral humoral immunity might be one of the strongest risk factors for fatal COVID-19; in fact, in our cohort, the biggest proportion (more than 50%) of deceased patients was attributable to the C1 in which individuals showed the lowest humoral response (5 to 16-fold lower as in other clusters), measured in a time frame of a few days after admission. Therefore, we speculate that at hospitalization, antiviral antibody status should be evaluated in all patients, not only for risk-based stratification but also to possibly identify individuals in which prompt antibody treatment may reduce the risk of disease progression²⁹. This humoral response-based risk stratification/treatment venue may become even more critical with future variants of concerns when patients would be vaccinated against or will recover from the disease caused by one variant but get infected by another significantly different variant. In such cases, it would be important to evaluate the antiviral antibody status specifically for the acute disease-causing variant and thus possibly choose the most efficient antibody treatment available (i.e. specific monoclonal antibodies and/or variant specific convalescent plasma).

The other high-risk cluster (C2) was smaller and characterized by hyper-inflammation as measured by the highest IL-6 levels. In this cluster, IL-6 levels were 5 to 60-fold higher than in other clusters. Systemic hyper-inflammation with elevated levels of IL-6, sometimes referred to as the “cytokine storm”, is a well-recognized phenomenon of severe COVID-19.³⁰⁻³³ Importantly,

patients in this high-risk hyper-inflammatory cluster showed a protective high antiviral humoral response; conversely, patients in high-risk C1 with impaired humoral viral control showed low-risk moderate IL-6 levels. These findings suggest that there may be two discrete immune pathways leading to disease progression and fatal COVID-19. One may be driven by delayed kinetics of antibody production, independently of hyper-inflammation, and the other may arise through excessive IL-6 mediated host inflammation response and independently of the protective humoral response. As opposed to patients with delayed kinetics of antibody production, but no hyper-inflammation, which should be treated by providing them with humoral immune support (antibody treatment or convalescent plasma), the patients with hyper-inflammation (as reflected by high IL-6 levels), but sufficient humoral response, should be treated by immune suppression (i.e., anti-IL6 and/or glucocorticosteroids). Our data therefore suggest the possible clinical importance of anti-SARS-CoV-2 immunophenotyping for the possible selection of more efficient personalized anti-viral therapies.

Lymphocytes, especially T cells are key orchestrators of anti-viral immune responses.¹⁰ However, the contribution of T cells to anti-SARS-CoV-2 protective or host pathogenic responses remains poorly understood. An imbalance of SARS-CoV-2-reactive CD4+ T cells, with increased proportions of cytotoxic T helper cells and reduced proportions of Treg cells⁴, and T cell chemoattractants and enrichment of interferon gamma-producing T cells in the alveolar space¹¹, suggests the pathogenic role of T cells. On the other hand, T-cell lymphopenia in lung¹⁴ and impaired T cell responses with no increase in T cell abundances in the lungs have been reported in COVID-19 decedents.³⁴ From our data, we speculate that a significant decrease in circulating T cells may be a surrogate marker of T cell host pathogenic response and consequently, it was predominant in high-risk C1 and C2, and medium risk C3 clusters. In

contrast low or no decrease in circulating T cells may be a surrogate marker of protective T cell immune response, as it was predominant in moderate C4 or very low-risk clusters C5 and C6.

There are some important limitations to our study. The first and the most significant limitation is that we do not have a validation cohort. Validation in machine learning is relevant for assuring accuracy of the trained algorithm. However, acquisition of such large amounts of quality clinical and biological data is difficult and, to our knowledge, the only study that did such a comprehensive evaluation of COVID-19 patients and offers datasets freely available, the COVID-IP cohort, lacks the primary outcome strength that was present in our cohort. In COVID-IP cohort ³¹ only 5 individuals had died, however in our cohort, we have recorded 45 cases of fatal COVID-19. Another limitation of the study is that Clusters were not balanced concerning different baseline parameters, some of which (i.e. age) are also connected to the risk of death and thus might have confounded the observed results. However, the association between immunological clusters and the risk of death preserved its statistical significance also after major clinical risk factors (age, WHO severity ordinal scale category) were adjusted for in multivariable Cox logistic regression analysis. Moreover, due to the observational nature of the study, there were differences in the time at which samples were collected. However, anti-spike 1-IgG antibody levels were measured uniformly and early during the disease progression (median 4th day after the admission), and the kinetics of IL6 and circulating T cells were monitored longitudinally during the disease course. Furthermore, circadian rhythm sensitive parameters (i.e. quantitative lymphocyte subsets) were measured at appropriate and consistent time-points.

In conclusion, by employing unsupervised machine learning we identified multiple anti-SARS-CoV-2 immune response profiles and observed major differences in COVID-19 mortality between these profiles. Our findings suggest that there may be different immune mechanisms that

govern COVID-19 disease outcomes and those observations could be explored further for application in clinical practice, possibly by immune monitoring and biomarkers for selecting novel drugs and existing COVID-19 treatments.

Acknowledgments

We thank Monika Šohar, Ines Hasanović, Žan Kogovšek for flow cytometry laboratory support.

We thank Eva Bitežnik for analysing support. We thank Dr Viktorija Tomič, Dr Dane Lužnik, Maruša Ravnik, Vesna Špendal, Mitja Rot, Jerneja Oman and Nataša Debeljak for SARS-CoV-2 PCR testing laboratory support.

Conflict of interest statement

In relation to the manuscript all authors declare that they have no conflict of interest.

Figure 1 The visualization of Gaussian mixed model cluster plots.

*SARS-CoV-2 anti S1 IgG antibodies were measured median 4 days after admission to the hospital. †Decreases in circulating lymphocytes were defined as the lowest T, B and NK cell absolute counts recorded after admission. ‡IL-6 increase was defined as the maximal serum level recorded after admission.

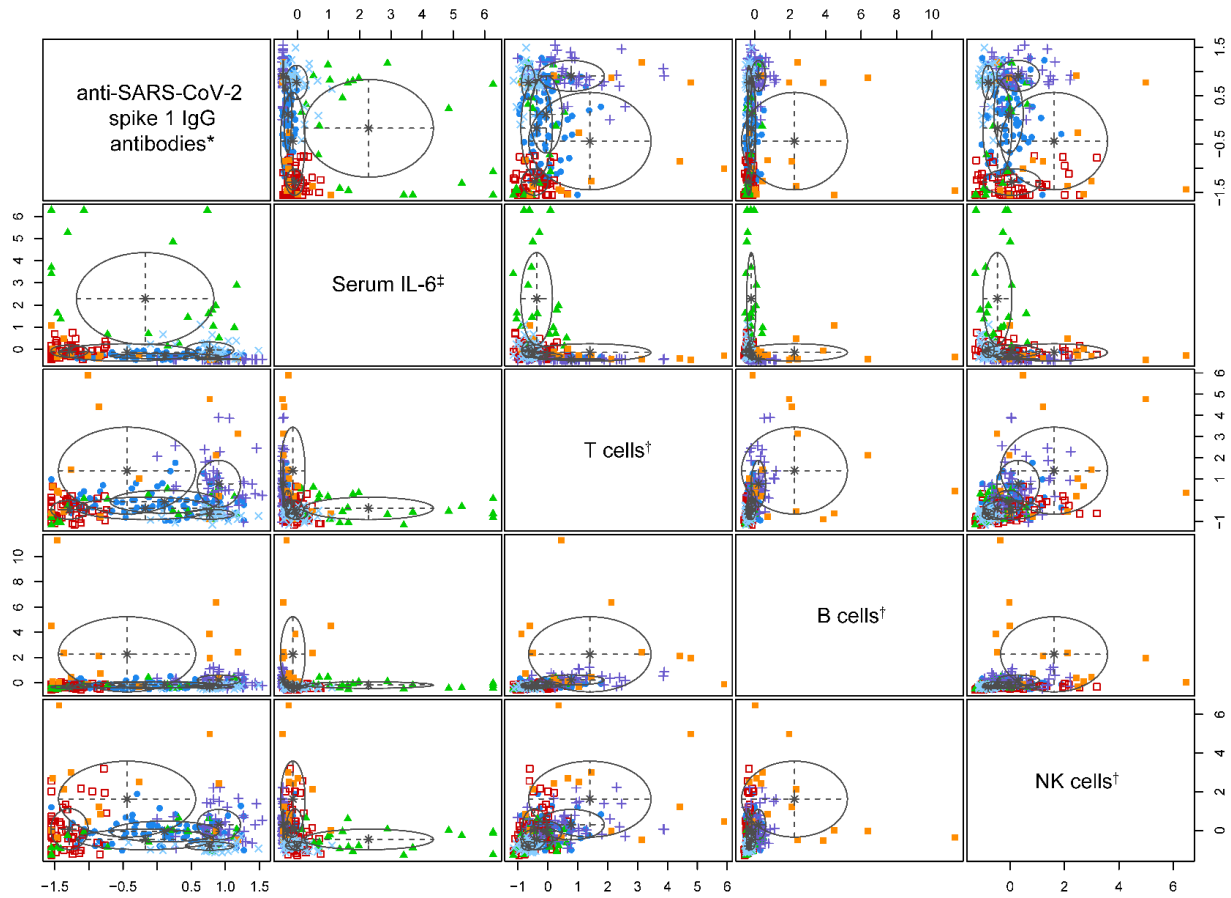


Figure 3 Immune responses of 254 hospitalized COVID-19 patients across the six clusters (C1-6). Shown are the normalized values of parameters. Heatmap: red indicates the individual response is greater than the population mean, and blue indicates that the individual response is less than the population mean.

SARS-CoV-2 anti S1 IgG antibodies were measured median 4 days after admission to the hospital. Decreases in circulating lymphocyte subsets were defined as the lowest T, B, and NK cell absolute counts recorded after admission. IL-6 increase was defined as the maximal serum level recorded after admission.

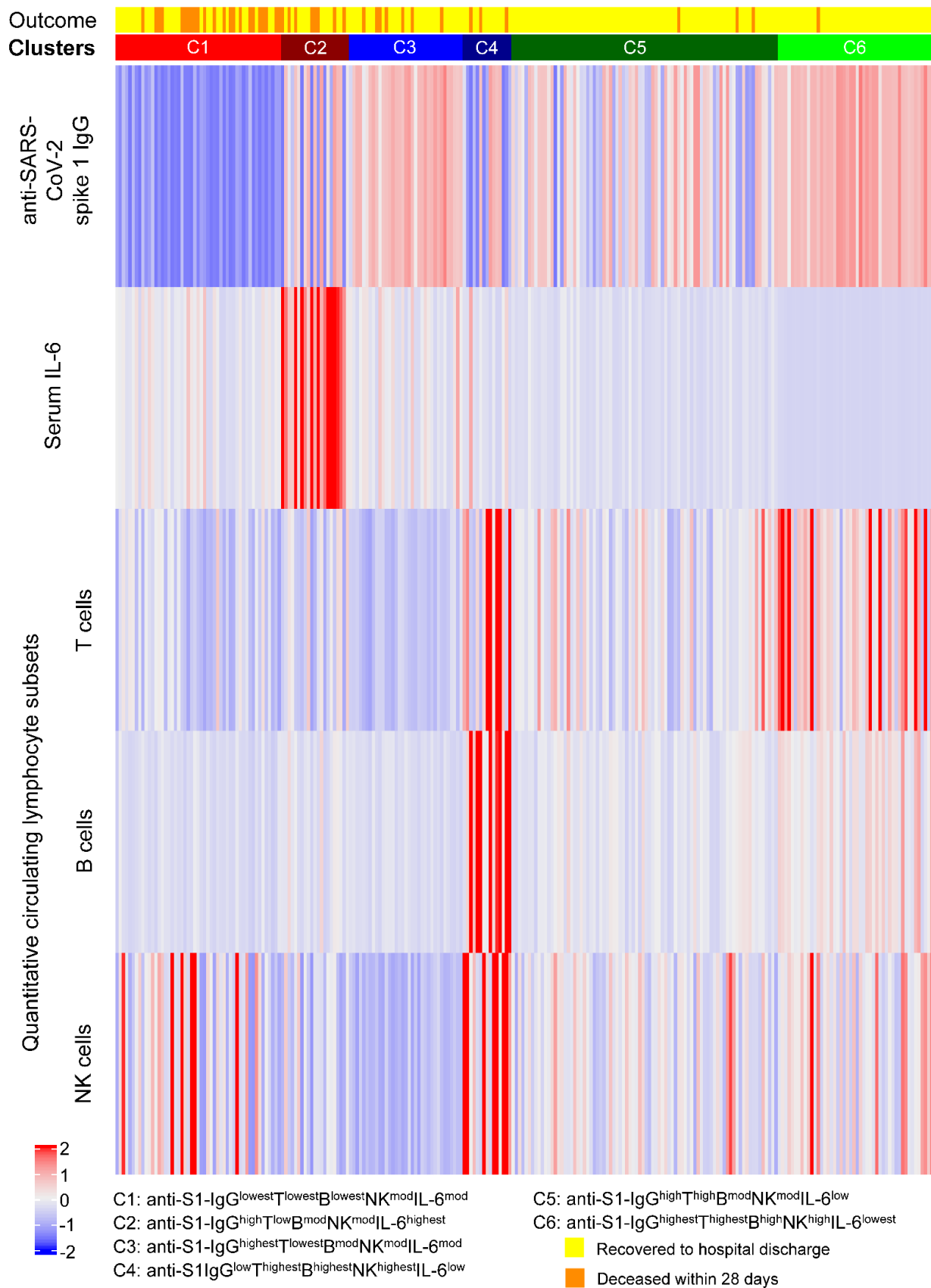
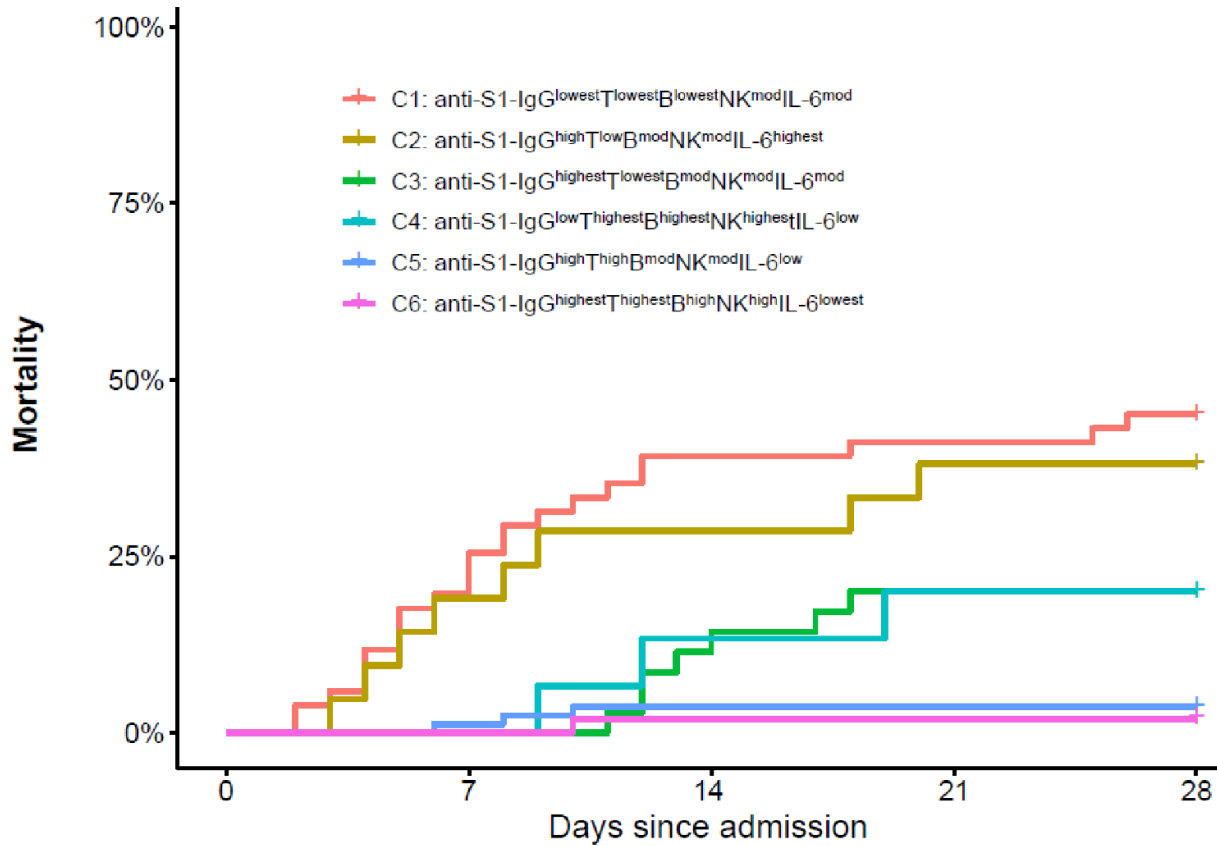


Figure 4. Kaplan–Meier survival curves for 28-day mortality according to the membership of the 6 clusters.



No. at Risk

Cluster 1 -	51	41	31	30	28
Cluster 2 -	21	17	15	13	13
Cluster 3 -	35	35	31	28	28
Cluster 4 -	15	15	13	12	12
Cluster 5 -	82	81	79	79	79
Cluster 6 -	50	50	49	49	49

Table 1 Characteristics of 254 hospitalized COVID-19 patients according to mortality at 28 days or to cluster assignment.

Characteristic	Died at 28 days (N = 45)	Recovered (N = 209) [†]	Cluster 1 (N=51, 20.1%)	Cluster 2 (N=21, 8.3%)	Cluster 3 (N=35, 13.8%)	Cluster 4 (N=15, 5.9%)	Cluster 5 (N=82, 32.3%)	Cluster 6 (N=50, 19.7%)
Age								
Mean ± SD — yr ^{****; ++}	81.6 ± 8.1	69.7 ± 14	75.3 ± 14.0	77.0 ± 11.1	74.2 ± 11.1	71.8 ± 15.4	70.0 ± 15.6	67.5 ± 11.8
Distribution — no. (%)^{****; +}								
<70 yr	5 (11)	93 (44)	14 (27)	5 (24)	10 (29)	5 (33)	34 (41)	30 (60)
70 to 79 yr	12 (27)	58 (28)	13 (25)	6 (29)	12 (34)	5 (33)	22 (27)	12 (24)
≥80 yr	28 (62)	58 (28)	24 (47)	10 (48)	13 (37)	5 (33)	26 (32)	8 (16)
Male sex — no. (%)								
	28 (62)	110 (53)	23 (45)	15 (71)	24 (69)	10 (67)	43 (52)	23 (46)
WHO severity ordinal scale²¹ at admission — no. (%)^{****}								
Ordinal scale 2	7 (16)	114 (55)	23 (45)	5 (24)	13 (37)	9 (60)	44 (54)	27 (54)
Ordinal scale 3	38 (84)	95 (45)	28 (55)	16 (76)	22 (63)	6 (40)	38 (46)	23 (46)
Previous coexisting disease — no. (%)								
Type 2 diabetes	15 (33)	58 (28)	15 (29)	8 (38)	9 (26)	4 (27)	27 (33)	10 (20)
Hypertension	28 (62)	124 (59)	34 (67)	12 (57)	25 (71)	8 (53)	45 (55)	28 (56)
Heart disease (excl. hypertension)	19 (42)	74 (35)	20 (39)	13 (62)	12 (34)	4 (27)	31 (38)	13 (26)
Chronic lung disease ‡	8 (18)	51 (24)	12 (24)	5 (24)	7 (20)	4 (27)	20 (24)	11 (22)
Rheumatic Diseases ⁺	3 (7)	9 (4)	7 (14)	1 (5)	1 (3)	0 (0)	1 (1)	2 (4)
Cancer	7 (16)	22 (11)	7 (14)	5 (24)	2 (6)	2 (13)	7 (9)	6 (12)
Chronic kidney disease	6 (13)	9 (4)	4 (8)	3 (14)	4 (11)	1 (7)	2 (2)	1 (2)
No. of coexisting diseases – no. (%)								
None	3 (7)	38 (18)	4 (8)	0 (0)	5 (14)	3 (20)	15 (18)	14 (28)
One	18 (40)	65 (31)	18 (35)	6 (29)	12 (34)	6 (40)	24 (29)	17 (34)
Two or more	24 (53)	106 (51)	29 (57)	15 (71)	18 (51)	6 (40)	43 (52)	19 (38)
Body mass index — no. (%) §								

≥30.0	10 (22)	82 (39)	16 (31)	9 (43)	7 (20)	8 (53)	28 (34)	24 (48)
Missing data	20 (31)	14 (10)	9 (18)	1 (5)	8 (23)	1 (7)	13 (16)	2 (4)
Treated with glucocorticoids– no. (%)¶	24 (53)	134 (64)	29 (57)	14 (67)	23 (66)	7 (47)	46 (56)	39 (78)
Invasive mechanical ventilation***	8 (18)	7 (3)	7 (14)	0 (0)	3 (9)	0 (0)	3 (4)	2 (4)
Died at 28 days– no. (%)****	/	/	23 (45)	8 (38)	7 (20)	3 (20)	3 (4)	1 (2)
Median time (IQR) of days in hospital/to death or discharge****	9 (7)	8 (7)	8 (8)	10 (9)	13 (8)	12 (13)	7 (5)	6 (6)

†Recovered to hospital discharge. There was a significant difference between patients who had died and recovered****, and/or clusters****; but there were no significant differences between the groups in any other characteristics. ‡Chronic lung disease was defined as chronic obstructive pulmonary disease, asthma, or chronic bronchitis. §BMI is the weight in kilograms divided by the square of the height in meters. ¶The decision to prescribe medications was at the discretion of the treatment team for each patient. *P<0.05; **P<0.01; ***P<0.001; ****P<0.0001; Clusters C1-C6: †P<0.05; ††P<0.01; †††P<0.001; ††††P<0.0001.

Table 2 Antibody response, lymphocytes, and IL-6 according to cluster assignment.

	Cluster 1 (N=51, 20.1%)	Cluster 2 (N=21, 8.3%)	Cluster 3 (N=35, 13.8%)	Cluster 4 (N=15, 5.9%)	Cluster 5 (N=82, 32.3%)	Cluster 6 (N=50, 19.7%)
Anti-SARS-CoV-2						
S1 IgG antibodies						
(pg/ml)*						
Minimum	0	0	1425	0	0	1958
25%	0	301.9	2850	184.7	1317	2934
Median	191.7	2246.2	3013	877.1	2113	3074
75%	450	2969.7	3152	2923.2	2848	3286
Maximum	1019.6	3423.5	3828	3444.7	3556	3893
T cells/mm³†						
Minimum	95.0	88.0	93.0	227	191.0	159.0
25%	252.0	338.0	266.5	594	489.2	729.0
Median	372.0	418.0	343.0	1015	619.0	954.5
75%	644.0	767.0	422.0	2010	743.2	1208.2
Maximum	1008.0	992.0	557.0	3662	1574.0	2650.0
B cells/mm³‡						
Minimum	0.00	16.0	13.00	71.0	16.00	31.0
25%	40.50	50.0	47.50	214.0	72.25	119.2
Median	56.00	101.0	67.00	660.0	103.00	188.0
75%	83.00	129.0	89.50	973.0	147.00	262.0
Maximum	161.00	271.0	121.00	3097.0	286.00	467.0
NK cells/mm³‡						
Minimum	7.0	7.00	20.00	83.0	31.0	42.0
25%	72.5	49.00	38.00	135.0	92.0	110.5
Median	113.0	103.00	56.00	259.0	125.0	146.0
75%	185.5	131.00	69.50	399.5	162.8	202.5
Maximum	459.0	201.00	106.00	790.0	327.0	362.0
IL-6 (pg/ml)*						
Minimum	4.93	93.2	8.14	3.48	2.96	2.00
25%	34.45	2018.0	24.90	16.55	16.02	3.692
Median	57.70	315.0	58.20	32.10	24.85	5.34
75%	89.55	620.0	105.00	59.35	40.35	7.28
Maximum	184.0	1000.0	237.00	232.00	71.50	13.10

*SARS-CoV-2 anti S1 IgG antibodies were measured median 4 days after admission to the hospital. †Decreases in circulating lymphocytes were defined as the lowest T, B and NK cell absolute counts recorded after admission. ‡IL-6 increase was defined as the maximal serum level recorded after admission.

Table 3A-B Risk of fatal COVID-19 **A** in various clusters or **B** in grouped clusters.

3A	Cluster 1 (N=51, 20.1%)	Cluster 2 (N=21, 8.3%)	Cluster 3 (N=35, 13.8%)	Cluster 4 (N=15, 5.9%)	Cluster 5 (N=82, 32.3%)	Cluster 6 (N=50, 19.7%)
Cluster 1	/	/	/	/	/	/
Cluster 2	1.94	/	/	/	/	/
HR	(0.86-4.37)					
95%CI	P=0.11					
P-value						
Cluster 3	3.36	1.87	/	/	/	/
HR	(1.51-8.55)	(0.66-5.24)				
95%CI	P=0.004	P=0.24				
P-value						
Cluster 4	2.95	1.51	0.88	/	/	/
HR	(0.88-9.93)	(0.39-5.79)	(0.23-3.41)			
95%CI	P=0.08	P=0.55	P=0.89			
P-value						
Cluster 5	15.34	8.39	5.24	5.36	/	/
HR	(4.55-51.72)	(2.17-32.51)	(1.34-20.48)	(1.08-26.67)		
95%CI	P<0.0001	P=0.002	P=0.02	P=0.04		
P-value						
Cluster 6	21.69	10.97	7.33	7.41	1.66	/
HR	(2.89-163.61)	(1.20-82.67)	(0.89-60.24)	(0.75-72.75)	(0.17-16.43)	
95%CI	P=0.003	P=0.03	P=0.067	P=0.09	P=0.67	
P-value						

3B	Clusters 1+2 (N=72, 28.4%)	Clusters 3+4 (N=50, 19.7%)	Clusters 5+6 (N=132, 52%)
Clusters 1+2	/	/	/
Clusters 3+4	2.67	/	/
HR	(1.30-5.48)		
95%CI	p=0.008		
P-value			
Cluster 5+6	13.73	5.90	/
HR	(4.79-39.36)	(1.84-18.97)	
95%CI	P<0.0001	p=0.003	
P-value			

Definition of abbreviations: CI = confidence interval and HR = hazard ratio. Values represent hazard ratios for death from COVID-19, with 95% confidence intervals for the average effect of each cluster or grouped clusters compared with other clusters/grouped clusters. P values assess whether the distribution of characteristics within a given cluster is significantly different from a characteristic in other clusters in a regression model adjusted for age and WHO severity ordinal scale²¹ at the time of admission. Numbers highlighted in boldface represent clusters that had significantly different characteristics from characteristics to other clusters.

REFERENCES

1. Del Valle DM, Kim-Schulze S, Huang HH, et al. An inflammatory cytokine signature predicts COVID-19 severity and survival. *Nat Med.* 2020;26(10):1636-1643.
doi:10.1038/s41591-020-1051-9
2. Garcia-Beltran WF, Lam EC, Astudillo MG, et al. COVID-19-neutralizing antibodies predict disease severity and survival. *Cell.* 2021;184(2):476-488.e11.
doi:10.1016/j.cell.2020.12.015
3. Vabret N, Britton GJ, Gruber C, et al. Immunology of COVID-19: Current State of the Science. *Immunity.* Published online 2020. doi:10.1016/j.immuni.2020.05.002
4. Meckiff BJ, Ramírez-Suástegui C, Fajardo V, et al. Imbalance of Regulatory and Cytotoxic SARS-CoV-2-Reactive CD4+ T Cells in COVID-19. *Cell.* 2020;183(5):1340-1353.e16. doi:10.1016/j.cell.2020.10.001
5. Lucas C, Wong P, Klein J, et al. Longitudinal analyses reveal immunological misfiring in severe COVID-19. *Nature.* 2020;584(7821):463-469. doi:10.1038/s41586-020-2588-y
6. Aydilto T, Rombauts A, Stadlbauer D, et al. Immunological imprinting of the antibody response in COVID-19 patients. *Nat Commun.* 2021;12(1). doi:10.1038/s41467-021-23977-1
7. Moore JB, June CH. Cytokine release syndrome in severe COVID-19. *Science (80-).* 2020;368(6490):473-474. doi:10.1126/science.abb8925
8. McElvaney OJ, McEvoy NL, McElvaney OF, et al. Characterization of the inflammatory response to severe COVID-19 illness. *Am J Respir Crit Care Med.* 2020;202(6):812-821.

doi:10.1164/rccm.202005-1583OC

9. Kawasuji H, Morinaga Y, Tani H, et al. Delayed neutralizing antibody response in the acute phase correlates with severe progression of COVID-19. *Sci Rep.* 2021;11(1). doi:10.1038/s41598-021-96143-8
10. Sallusto F. Heterogeneity of Human CD4+ T Cells Against Microbes. *Annu Rev Immunol.* 2016;34:317-334. doi:10.1146/annurev-immunol-032414-112056
11. Grant RA, Morales-Nebreda L, Markov NS, et al. Circuits between infected macrophages and T cells in SARS-CoV-2 pneumonia. *Nature.* Published online 2021. doi:10.1038/s41586-020-03148-w
12. Heming M, Li X, Räuber S, et al. Neurological Manifestations of COVID-19 Feature T Cell Exhaustion and Dedifferentiated Monocytes in Cerebrospinal Fluid. *Immunity.* 2021;54(1):164-175.e6. doi:10.1016/j.immuni.2020.12.011
13. Zhang XX, Tan Y, Ling Y, et al. Viral and host factors related to the clinical outcome of COVID-19. *Nature.* 2020;583(7816):437-440. doi:10.1038/s41586-020-2355-0
14. Ronit A, Berg RMG, Bay JT, et al. Compartmental immunophenotyping in COVID-19 ARDS: A case series. *J Allergy Clin Immunol.* Published online 2020. doi:10.1016/j.jaci.2020.09.009
15. Huang W, Berube J, McNamara M, et al. Lymphocyte Subset Counts in COVID-19 Patients: A Meta-Analysis. *Cytom Part A.* 2020;97(8):772-776. doi:10.1002/cyto.a.24172
16. Wang F, Nie J, Wang H, et al. Characteristics of peripheral lymphocyte subset alteration in covid-19 pneumonia. *J Infect Dis.* 2020;221(11):1762-1769.

doi:10.1093/INFDIS/JIAA150

17. Jiang M, Guo Y, Luo Q, et al. T-Cell Subset Counts in Peripheral Blood Can Be Used as Discriminatory Biomarkers for Diagnosis and Severity Prediction of Coronavirus Disease 2019. *J Infect Dis.* 2020;222(2):198-202. doi:10.1093/infdis/jiaa252
18. Custovic A, Belgrave D, Lin L, et al. Cytokine Responses to Rhinovirus and Development of Asthma, Allergic Sensitization, and Respiratory Infections during Childhood. *Am J Respir Crit Care Med.* 2018;197(10):1265-1274. doi:10.1164/RCCM.201708-1762OC
19. R Core Team. R: A language and environment for statistical computing. *R Found Stat Comput Vienna.* Published online 2020.
20. Scrucca L, Fop M, Murphy BT, Raftery AE. Mclust. *R J.* 2016;8(1):289-317.
21. Tocilizumab in Patients Hospitalized with Covid-19 Pneumonia. *N Engl J Med.* 2021;384(15):1473-1474. doi:10.1056/nejmc2100217
22. Horby P, Lim WS, Emberson JR, et al. Dexamethasone in Hospitalized Patients with Covid-19. *N Engl J Med.* 2021;384(8):693-704. doi:10.1056/NEJMoA2021436
23. Corral-Gudino L, Bahamonde A, Arnaiz-Revillas F, et al. Methylprednisolone in adults hospitalized with COVID-19 pneumonia: An open-label randomized trial (GLUCOCOVID). *Wien Klin Wochenschr.* Published online 2021:1-9. doi:10.1007/s00508-020-01805-8
24. Beigel JH, Tomashek KM, Dodd LE, et al. Remdesivir for the Treatment of Covid-19 — Final Report. *N Engl J Med.* 2020;383(19):1813-1826. doi:10.1056/nejmoa2007764
25. Liu K, Yang T, Peng XF, et al. A systematic meta-analysis of immune signatures in

patients with COVID-19. *Rev Med Virol.* 2021;31(4). doi:10.1002/RMV.2195

26. Atyeo C, Fischinger S, Zohar T, et al. Distinct Early Serological Signatures Track with SARS-CoV-2 Survival. *Immunity.* 2020;53(3):524-532.e4.
doi:10.1016/J.IMMUNI.2020.07.020
27. Röltgen K, Powell AE, Wirz OF, et al. Defining the features and duration of antibody responses to SARS-CoV-2 infection associated with disease severity and outcome. *Sci Immunol.* 2020;5(54). doi:10.1126/SCIIMMUNOL.ABE0240
28. Lucas C, Klein J, Sundaram ME, et al. Delayed production of neutralizing antibodies correlates with fatal COVID-19. *Nat Med.* 2021;27(7):1178-1186. doi:10.1038/S41591-021-01355-0
29. Gupta A, Gonzalez-Rojas Y, Juarez E, et al. Early Treatment for Covid-19 with SARS-CoV-2 Neutralizing Antibody Sotrovimab. *N Engl J Med.* 2021;385(21):1941-1950.
doi:10.1056/NEJMOA2107934
30. Kim JS, Lee JY, Yang JW, et al. Immunopathogenesis and treatment of cytokine storm in COVID-19. *Theranostics.* 2021;11(1):316-329. doi:10.7150/THNO.49713
31. Laing AG, Lorenc A, del Molino del Barrio I, et al. A dynamic COVID-19 immune signature includes associations with poor prognosis. *Nat Med.* 2020;26(10):1623-1635.
doi:10.1038/S41591-020-1038-6
32. Sinha P, Matthay MA, Calfee CS. Is a “Cytokine Storm” Relevant to COVID-19? *JAMA Intern Med.* 2020;180(9):1152-1154. doi:10.1001/JAMAINTERNMED.2020.3313
33. Blot M, Bourredjem A, Binquet C, Piroth L. Is IL-6 the Right Target in COVID-19 Severe

Pneumonia? *Am J Respir Crit Care Med.* 2021;203(1):139-140.

doi:10.1164/RCCM.202007-2924LE

34. Melms JC, Biermann J, Huang H, et al. A molecular single-cell lung atlas of lethal COVID-19. *Nature*. Published online April 2021. doi:10.1038/s41586-021-03569-1

Immunophenotypes of anti-SARS-CoV-2 responses and fatal COVID-19

ONLINE DATA SUPPLEMENT

Julij Šelb, M.D., Ph.D.^{1*}, Barbara Bitežnik, M.D.^{1,2*}, Urška Bidovec Stojković, Ph.D.¹, Boštjan Rituper, M.D., Ph.D.^{1,2}, Katarina Osolnik, M.D.¹, Peter Kopač, M.D.^{1,2}, Petra Svetina, M.D.¹, Kristina Cerk Porenta M.D.¹, Franc Šifrer M.D.¹, Petra Lorber M.D.^{1,2}, Darinka Trinkaus Leiler M.D.¹, Tomaž Hafner M.D.^{1,2}, Tina Jerič M.D.¹, Robert Marčun M.D., Ph.D.^{1,2}, Nika Lalek M.D., Ph.D.^{1,2}, Nina Frelj M.D.¹, Mojca Bizjak M.D.¹, Rok Lombar M.D.¹, Vesna Nikolić M.D.^{1,2}, Katja Adamič M.D.¹, Katja Mohorčič M.D.¹, Sanja Grm Zupan M.D.¹, Irena Šarc, M.D.^{1,2}, Jerneja Debeljak MSc¹, Ana Koren, Ph.D.¹, Ajda Demšar Luzar MSc¹, Matija Rijavec, Ph.D.^{1,3}, Izidor Kern M.D.¹, Matjaž Fležar M.D., Ph.D.^{1,2}, Aleš Rozman, M.D., Ph.D.^{1,2}, and Peter Korošec, Ph.D.^{1,4}

¹University Clinic of Respiratory and Allergic Diseases, Golnik, Slovenia; ²Medical Faculty, University of Ljubljana, Ljubljana, Slovenia; ³Biotechnical Faculty, University of Ljubljana, Ljubljana, Slovenia; ⁴Faculty of Pharmacy, University of Ljubljana, Ljubljana, Slovenia

*These authors contributed equally.

Correspondence: Peter Korošec Ph.D.; University Clinic of Respiratory and Allergic Diseases Golnik; Golnik 36, 4204 Golnik, Slovenia; E-mail: peter.korosec@klinika-golnik.si

Study participants.

We conducted this study of COVID-19 at the University Clinic of Respiratory and Allergic Diseases Golnik, a quaternary, acute care hospital in Slovenia. The first hospitalized patient was included on September 4th and the last on December 12th, 2020. All information presented in this report is based on a data cut-off of January 9th, 2021. During a follow-up of 3 to 26 days after presentation, 45 patients (18%) died (8 after intubation), with December 16th, 2020, as the time of the last endpoint event. During a follow-up of 3 to 35 days after presentation, 209 patients had survived hospital discharge (7 after successful cessation of invasive mechanical ventilation), with December 17, 2020, as the time of discharge of the last patients. Six of those patients were discharged more than 28 days after the presentation (during a follow-up of 29 to 35 days; one after successful cessation of invasive mechanical ventilation). None of the patients was transferred to another

For non-hospitalized control subjects we included 40 adult individuals with prior COVID-19 confirmed by a nasopharyngeal swab PCR test (Supplement Table E1). In first control subject SARS-CoV-2 infection was confirmed on April 19th, 2021 and in the last on February 18th, 2022. The first blood sampling was done on July 12th, 2021 and the last on March 16th, 2022. Consequently a single post-blood sample was collected median of 60 days (range 20 to 175 days) after infection. None of the controls subjects was vaccinated neither before infection nor before sampling.

Data analysis

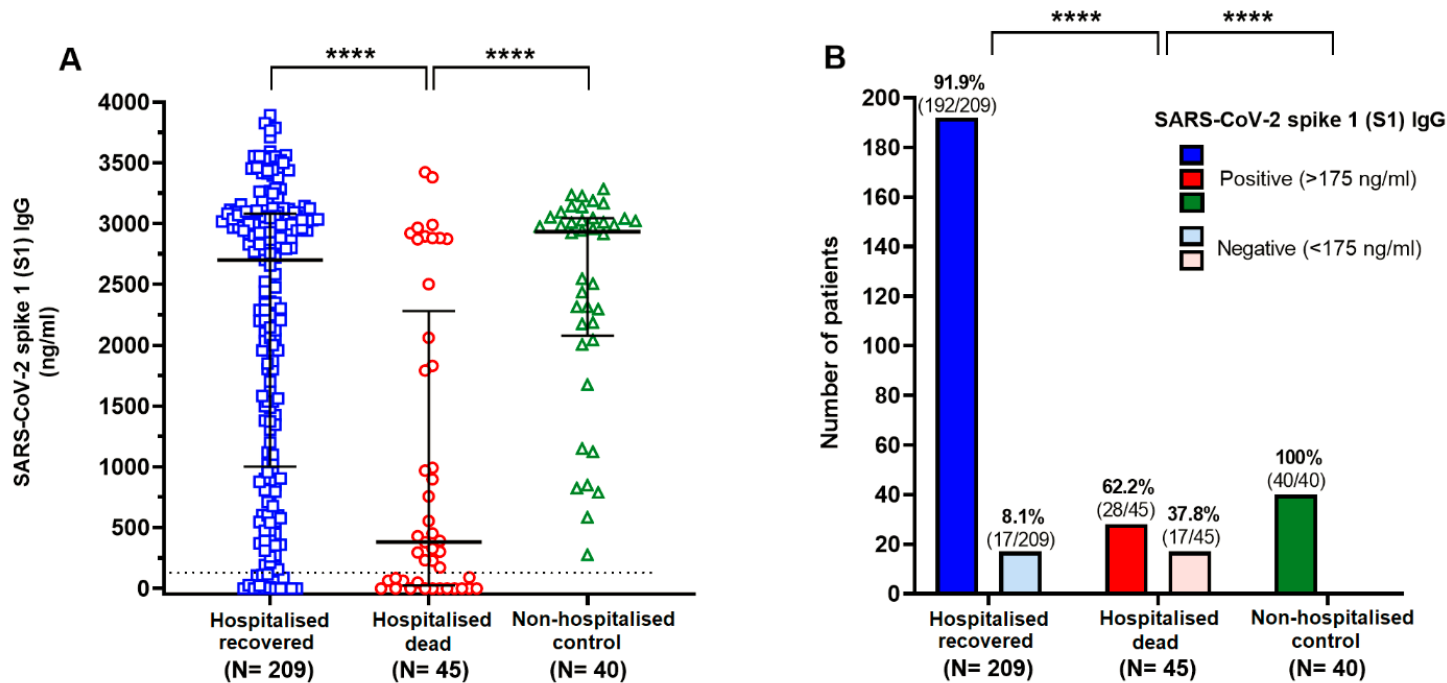
First, we performed a standard Cox proportional hazards analysis. The analysis was done with all the variables and in a stepwise manner. We analysed the variables in an univariate fashion and if the variable correlated significantly with the risk of death in univariate analysis it was further used as predictor in multivariable analysis (Supplement Table E1).

Regression analysis (including Cox regression) is considered a supervised machine learning method, since it fits the predictors to the outcome of interest (i.e. fatal COVID-19). To search for patterns in immune response that are not fitted to the outcome of interest and thus possibly reflect inherent biological processes, we next performed cluster analysis (unsupervised machine learning method) of immune variables. We used Gaussian mixture model algorithm as previously described¹. Clustering was performed with variables of anti-SARS CoV-2 immune response for which several studies demonstrated that likely contribute to disease severity. Those variables included antibody^{2,3}, circulating lymphocyte subsets⁴⁻⁹ and serum interleukin-6^{1,3,5,8,13} responses. Before clustering, all variables were normalized. The model was fitted by the expectation-maximization algorithm and the optimal number of clusters was chosen using the Bayesian information criterion (global optimum n=6 clusters; Figure 1).

We compared the end point characteristics of each cluster with other clusters, and Kaplan–Meier survival curves were constructed to visualize mortality over the 28 days across clusters. To account for possible differences between clusters in potential confounding variables (i.e. clinical severity factors^{14,15} that could influence the risk of fatal COVID-19), we used multivariable Cox regression with clusters and clinical severity factors serving as predictors of fatal COVID-19. We included only the non-immunological factors that were significant predictors of the fatal COVID-19 in a before constructed (please see above) multivariable adjusted Cox proportional hazard model.

Figure E1A-B. Anti-SARS-CoV-2 spike 1 IgG antibodies levels in 254 hospitalized COVID-19 patients according to whether patients progressed to the primary endpoint of death at 28 days or recovered to hospital discharge. **A** shows individual concentrations and **B** positivity of antibody testing. Non-hospitalized controls represent adult individuals with prior COVID-19 confirmed by a nasopharyngeal swab PCR test, post-sampling median 60 days after infection.

The median time of single blood sampling for both (hospitalized) subgroups was 4 days since hospital admission. A dotted horizontal line represents the cut-off between positive and negative antibody concentrations, assigned according to the manufacturer threshold for positivity (175 ng/ml). Horizontal lines represent the median with IQR. **** P<0.0001.



Figures E2A-G. A shows overall absolute counts of circulating T cells, CD4 and CD8 subpopulations of T cells, B and NK cells, and IL-6 measurements in sera, and longitudinal dynamic of circulating **B** T cells, **C** CD4 and **D** CD8 subpopulations of T cells, **E** B and **F** NK cell and **G** IL-6 in sera of hospitalized COVID-19 patients per day after admission according to whether patients progressed to the primary endpoint of death at 28 days or recovered to hospital discharge. Non-hospitalized controls represent adult individuals with prior COVID-19 confirmed by a nasopharyngeal swab PCR test, post-sampling median 60 days after infection.

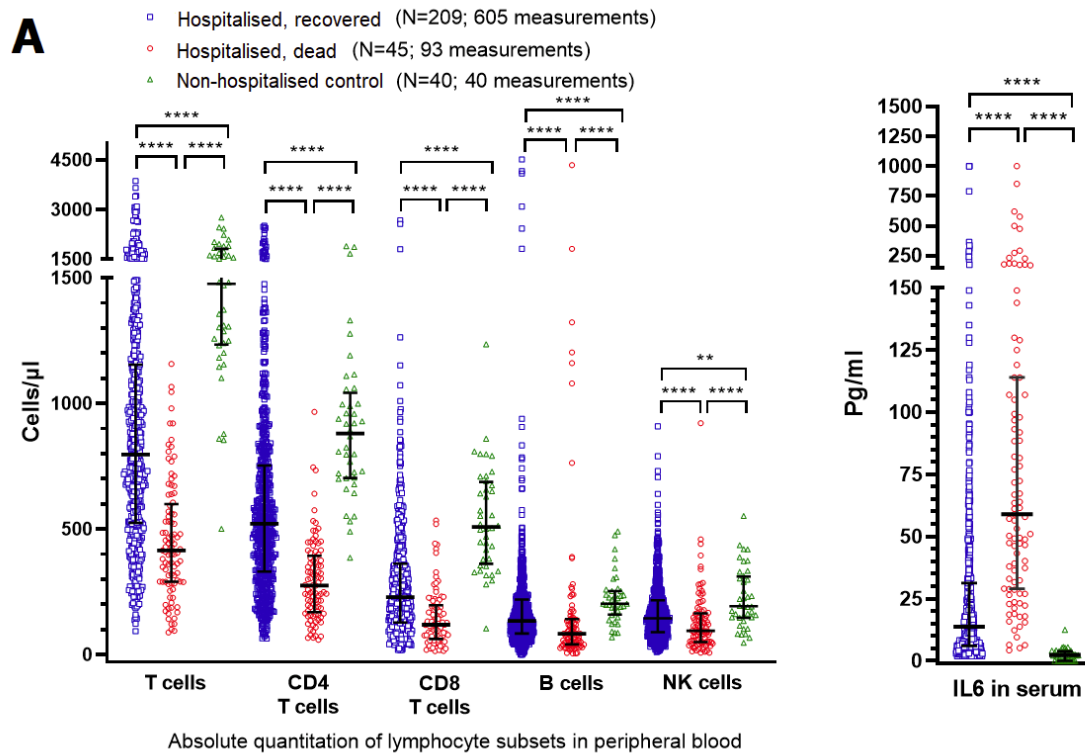


Figure E3. The lowest T cells, CD4 and CD8 subpopulations of T cells, B and NK cells absolute counts, and the highest serum IL-6 after admission to the hospital according to whether COVID-19 patients progressed to the primary endpoint of death at 28 days or recovered to hospital discharge. Non-hospitalized controls represent adult individuals with prior COVID-19 confirmed by a nasopharyngeal swab PCR test, post-sampling median 60 days after infection.

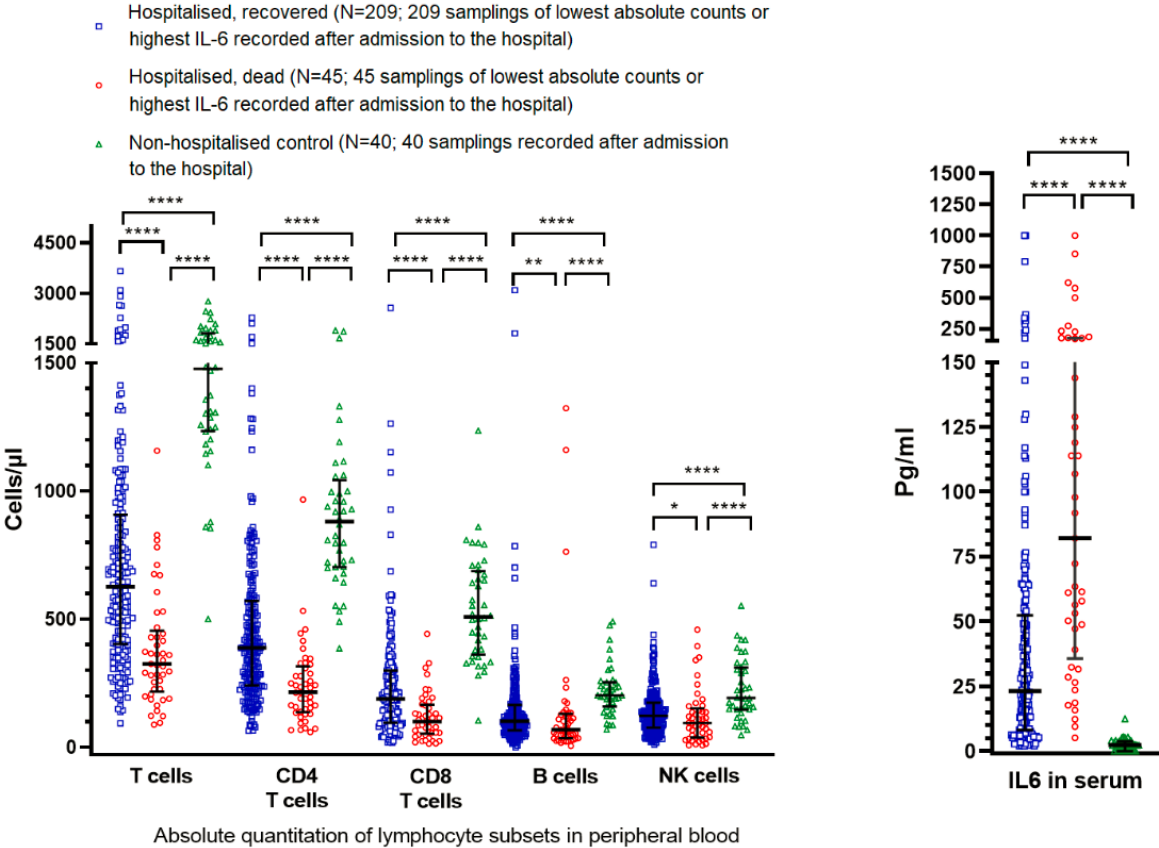


Table E1. Demographic characteristics, antibody response, lymphocytes, and IL-6 in non-hospitalized control subjects.

Age – mean ± SD	45.6 ± 12.1
Male sex — no. (%)	22 (55%)
Anti-SARS-CoV-2 S1 IgG antibodies (pg/ml)	
Minimum	277.2
25%	2077
Median	2935
75%	3046
Maximum	3286
T cells/mm³	
Minimum	501
25%	1234
Median	1477
75%	1814
Maximum	2763
B cells/mm³	
Minimum	69
25%	159
Median	202
75%	253
Maximum	491
NK cells/mm³	
Minimum	47
25%	146.5
Median	192.5
75%	310.5
Maximum	552
IL-6 (pg/ml)	
Minimum	0
25%	0
Median	2.425
75%	3.853
Maximum	12.50

Table E2. Associations between demographic and clinical factors, antibody response, lymphocyte subsets, IL-6, and the endpoint of death at 28 days in 254 hospitalized subjects.

UNIVARIATE COX ANALYSIS				
	Hazard ratio	Lower 95% CI	Upper 95% CI	P-value
Age — yr	1.0887	1.0538	1.1247	<0.0001
Sex (female)	0.7072	0.3871	1.2920	0.26
Respiratory support received at the time of the admission (WHO severity ordinal scale 3) ¹⁶	5.7008	2.5448	12.771	<0.0001
Type 2 diabetes	1.2478	0.6713	2.3195	0.484
Hypertension	1.0620	0.5813	1.9402	0.845
No. of coexisting diseases (sum)	1.2775	0.8435	1.9348	0.247
Body mass index (≥ 30.0) [§]	0.9399	0.8701	1.0154	0.116
Glucocorticoid use (Yes)	0.6615	0.3682	1.1884	0.167
Anti-SARS-CoV-2 S1 IgG antibodies*	0.9993	0.9990	0.9996	<0.0001
T cells/mm ³ †	0.9965	0.9951	0.9979	<0.0001
CD4+ T cells/mm ³ †	0.9948	0.9926	0.9971	<0.0001
<500 CD4+ cells/mm ³	8.9102	2.1583	36.7840	0.0025
<200 CD4+cells/mm ³	3.8183	2.1246	6.8623	<0.0001
CD8+ T cells/mm ³ †	0.9936	0.9903	0.9969	0.0002
B Lymphocyte cells/mm ³ †	0.9998	0.9986	1.0011	0.808
Natural killer cells/mm ³ †	0.9977	0.9941	1.0014	0.219
IL-6‡	1.0022	1.0012	1.0032	<0.0001
MULTIVARIABLE COX ANALYSIS				
Age— yr	1.0652	1.0294	1.1023	0.0003
Respiratory support received at the time of admission	4.5264	1.9594	10.4563	0.0004
Anti-SARS-CoV-2 spike 1 IgG antibodies*	0.9994	0.9991	0.9996	<0.0001
T cells/mm ³ † or	0.9977	0.9963	0.9991	0.0015
CD4+ T cells/mm ³ † or	0.9965	0.9943	0.9988	0.0024
CD8+ T cells/mm ³ †	0.9960	0.9929	0.9991	0.012
IL-6‡	1.0014	1.0001	1.0027	0.031

*SARS-CoV-2 anti S1 IgG antibodies were measured median 4 days after admission to the hospital. †Decreases in circulating lymphocytes were defined as the lowest T cell, CD4, and CD8 subpopulations of T cells, B and NK cell absolute counts recorded after admission. ‡IL-6 increase was defined as the maximal serum level recorded after admission. §BMI data were missing for 34 patients. The decision to prescribe glucocorticoids was at the discretion of the treatment team for each patient. In the multivariable Cox model, only significant predictors (P<0.05) from univariate Cox analysis were retained and only CD3 T-cell counts were used (since they reflect the presence of CD4 as well as CD8 cells). HR-hazard ratio.

Acknowledgments

We thank Monika Šohar, Ines Hasanović and Žan Kogovšek for flow cytometry laboratory support. We thank Eva Bitežnik for data analysing support. We thank Dr Viktorija Tomič, Dr Dane Lužnik, Maruša Ravnik, Vesna Špendal, Mitja Rot, Jerneja Oman and Nataša Debeljak for SARS-CoV-2 PCR testing laboratory support.

References

1. Custovic A, Belgrave D, Lin L, et al. Cytokine Responses to Rhinovirus and Development of Asthma, Allergic Sensitization, and Respiratory Infections during Childhood. *Am J Respir Crit Care Med.* 2018;197(10):1265-1274. doi:10.1164/RCCM.201708-1762OC
2. Garcia-Beltran WF, Lam EC, Astudillo MG, et al. COVID-19-neutralizing antibodies predict disease severity and survival. *Cell.* 2021;184(2):476-488.e11. doi:10.1016/j.cell.2020.12.015
3. Kawasuji H, Morinaga Y, Tani H, et al. Delayed neutralizing antibody response in the acute phase correlates with severe progression of COVID-19. *Sci Rep.* 2021;11(1). doi:10.1038/s41598-021-96143-8
4. Vabret N, Britton GJ, Gruber C, et al. Immunology of COVID-19: Current State of the Science. *Immunity.* Published online 2020. doi:10.1016/j.immuni.2020.05.002
5. Lucas C, Wong P, Klein J, et al. Longitudinal analyses reveal immunological misfiring in severe COVID-19. *Nature.* 2020;584(7821):463-469. doi:10.1038/s41586-020-2588-y
6. Ronit A, Berg RMG, Bay JT, et al. Compartmental immunophenotyping in COVID-19 ARDS: A case series. *J Allergy Clin Immunol.* Published online 2020. doi:10.1016/j.jaci.2020.09.009
7. Huang W, Berube J, McNamara M, et al. Lymphocyte Subset Counts in COVID-19 Patients: A Meta-Analysis. *Cytom Part A.* 2020;97(8):772-776. doi:10.1002/cyto.a.24172
8. Wang F, Nie J, Wang H, et al. Characteristics of peripheral lymphocyte subset alteration in covid-19 pneumonia. *J Infect Dis.* 2020;221(11):1762-1769. doi:10.1093/INFDIS/JIAA150
9. Jiang M, Guo Y, Luo Q, et al. T-Cell Subset Counts in Peripheral Blood Can Be Used as Discriminatory Biomarkers for Diagnosis and Severity Prediction of Coronavirus Disease 2019. *J Infect Dis.* 2020;222(2):198-202. doi:10.1093/infdis/jiaa252

10. Del Valle DM, Kim-Schulze S, Huang HH, et al. An inflammatory cytokine signature predicts COVID-19 severity and survival. *Nat Med.* 2020;26(10):1636-1643. doi:10.1038/s41591-020-1051-9
11. Moore JB, June CH. Cytokine release syndrome in severe COVID-19. *Science (80-).* 2020;368(6490):473-474. doi:10.1126/science.abb8925
12. McElvaney OJ, McEvoy NL, McElvaney OF, et al. Characterization of the inflammatory response to severe COVID-19 illness. *Am J Respir Crit Care Med.* 2020;202(6):812-821. doi:10.1164/rccm.202005-1583OC
13. Zhang XX, Tan Y, Ling Y, et al. Viral and host factors related to the clinical outcome of COVID-19. *Nature.* 2020;583(7816):437-440. doi:10.1038/s41586-020-2355-0
14. Horby P, Lim WS, Emberson JR, et al. Dexamethasone in Hospitalized Patients with Covid-19. *N Engl J Med.* 2021;384(8):693-704. doi:10.1056/NEJMoa2021436
15. Beigel JH, Tomashek KM, Dodd LE, et al. Remdesivir for the Treatment of Covid-19 — Final Report. *N Engl J Med.* 2020;383(19):1813-1826. doi:10.1056/nejmoa2007764
16. Tocilizumab in Patients Hospitalized with Covid-19 Pneumonia. *N Engl J Med.* 2021;384(15):1473-1474. doi:10.1056/nejmc2100217