



Morphology of the genital organs of male and female giant anteaters (*Myrmecophaga tridactyla*)

Lilja Fromme^{1,2}, Débora R. Yogui^{3,4}, Mario Henrique Alves^{3,5}, Arnaud L.J. Desbiez^{3,6,7}, Marion Langeheine², André Quagliatto⁸, Ursula Siebert¹ and Ralph Brehm²

¹Institute for Terrestrial and Aquatic Wildlife Research, University of Veterinary Medicine Hannover, Hannover, Germany

²Institute for Anatomy, University of Veterinary Medicine Hannover, Hannover, Germany

³Project Anteaters and Highways, Instituto de Conservação de Animais Silvestres (ICAS), Campo Grande, Brazil

⁴Nashville Zoo, Nashville, TN, United States of America

⁵Fundación Zoológica de Cali, Valle del Cauca, Colombia

⁶Royal Zoological Society of Scotland (RZSS), Edinburgh, United Kingdom

⁷Instituto de Pesquisas Ecológicas (IPÊ), São Paulo, Brazil

⁸Laboratório de Ensino e Pesquisa em Animais Silvestres (LAPAS), Universidade Federal de Uberlândia, Uberlândia, Brazil

ABSTRACT

Background. The giant anteater belongs to the supraorder Xenarthra which occupies a systematically isolated position among placental mammals. The species is categorized as Vulnerable by the International Union for Conservation of Nature, and understanding its reproductive characteristics is critical for future conservation efforts.

Methods. Gross and microscopic anatomy of the genital organs of 23 male and 21 female adult and young roadkill giant anteaters in Brazil were studied.

Results. Male giant anteaters presented a short conical penis, intraabdominal testes, and prostate, vesicular and bulbourethral glands. A tubular remnant of the partially fused Müllerian ducts extended from the seminal colliculus through the prostate gland, continued cranially in the genital fold, bifurcated, and attached with one elongation each to the left and right epididymal corpus. The structure presented a total length of up to 10 cm and contained a yellowish liquid in its lumen. Histologically, the caudal section of this structure resembled the female vagina, the middle portion corresponded to the uterus, and the extensions showed characteristics of uterine tubes. In adult female giant anteaters, ovoid ovaries with occasional seminiferous cord-like structures were observed. The animals possessed a simple uterus, which was directly continuous with the vaginal canal. The caudal portion of the vagina had two lumina, separated by a longitudinal septum and opening into two apertures into the vaginal vestibule, cranial to the urethral opening. In the urethral and the lateral vestibular wall, glandular structures with characteristics of male prostate and bulbourethral glands, respectively, were found. The vestibule opened through a vertical vulvar cleft to the exterior. A pair of well-differentiated Wolffian ducts with a central lumen originated ventrally at the vaginal opening into the vestibule and passed in a cranial direction through the ventral vaginal and uterine wall. Each duct extended highly coiled along the ipsilateral uterine tube until the lateral pole of the ovaries where it merged with the rete ovarii.

Submitted 26 April 2021
Accepted 20 July 2021
Published 11 August 2021

Corresponding author
Ralph Brehm, ralph.brehm@tiho-hannover.de

Academic editor
Korakot Nganvongpanit

Additional Information and
Declarations can be found on
page 19

DOI 10.7717/peerj.11945

© Copyright
2021 Fromme et al.

Distributed under
Creative Commons CC-BY 4.0

OPEN ACCESS

Discussion. The reproductive morphology of giant anteaters reveals characteristics shared with other Xenarthrans: intraabdominal testes, a simple uterus, and a double caudal vagina. The persistence of well-differentiated genital ducts of the opposite sex in both males and females, however, singles them out among other species. These structures are the results of an aberration during fetal sexual differentiation and possess secretory functions. The possibility of a pathological degeneration of these organs should be considered in reproductive medicine of the species.

Conclusion. Knowledge of the unique reproductive characteristics of the giant anteater is essential for future reproductive management of the species. Additionally, further research on the peculiarities of the persisting genital duct structures might help to understand sexual differentiation in placental mammals in general.

Subjects Conservation Biology, Veterinary Medicine, Zoology, Anatomy and Physiology, Histology

Keywords Xenarthra, Reproduction, Anatomy, Histology, Persisting Müllerian duct, Persisting Wolffian duct, Persisting paramesonephric duct, Persisting mesonephric duct, Conservation

INTRODUCTION

The giant anteater (*Myrmecophaga tridactyla*) belongs to the supraorder Xenarthra, which comprises anteaters, sloths and armadillos, and represents one of the four major clades of placental mammals (Delsuc et al., 2002; Gardner, 2008). In literature, a systematically isolated position of Xenarthrans in relation to the other three mammalian clades is discussed (Novacek, 1992; Gaudin & Croft, 2015), and the extraordinary phylogenetic status of the extant xenarthran species is pointed out (Vizcaino & Bargo, 2014; Superina & Loughry, 2015), formerly including 31 (Gardner, 2008), more recently elevated to 39 species (Abba et al., 2015; Miranda et al., 2017; Feijó et al., 2019).

The giant anteater is the largest member of the anteater family and inhabits diverse ecosystems in Central and South America (Gardner, 2008; Miranda, Bertassoni & Abba, 2014). Nevertheless, its population is severely threatened by habitat loss and fragmentation, road-kills, wildfires, and species-specific characteristics such as low reproductive rates (Aguiar & Fonseca, 2008; Superina, Miranda & Abba, 2010; Miranda, Bertassoni & Abba, 2014). At present, the species is categorized as Vulnerable by the International Union for Conservation of Nature (IUCN, 2020) and Vulnerable (VU A2c) by the National Red List Brazil (Portaria MMA No. 444/2014, 2014). Efforts to guarantee the survival of this iconic species have to focus on habitat protection and mitigation of road-kills, but attention should also be given to the preservation of a healthy, genetically diverse captive population of giant anteaters (Miranda, Bertassoni & Abba, 2014). For both, in field conservation actions and reproductive management of captive populations, knowledge of reproductive features of a species is essential (Holt et al., 2003; Wildt et al., 2010).

Currently, there are only few and sometimes contradictory reports on the reproductive morphology of Xenarthrans. Previous studies on the genital organs of the male giant anteater have been limited to a macroscopic description and a brief outline of the histology of the testis (Kaudern, 1914; Grassé, 1955; Bartmann, Beyer & Wißdorf, 1991). In females,

only macroscopic characteristics of the genital organs have been mentioned so far ([Grassé, 1955](#); [Schauerte & Osmann, 2012](#)). There is a more detailed macroscopic and microscopic study on the reproductive morphology of the most closely related southern tamandua (*Tamandua tetradactyla*; [Rossi et al., 2011](#); [Rossi et al., 2012](#)), and some literature on male and female armadillos ([Rapp, 1852](#); [Owen, 1868](#); [Newfang, 1947](#); [Enders, 1960](#); [Glover, 1963](#); [Cardoso et al., 1985](#); [Cetica, Aldana Marcos & Merani, 2005](#)) and sloths ([Kaudern, 1914](#); [Wislocki, 1928](#); [Barretto, Amorim & Falcão, 2013](#); [Favoretto et al., 2015](#)). Some peculiar reproductive features have been portrayed in Xenarthrans, such as intraabdominal testes in males ([Kaudern, 1914](#); [Rossi et al., 2012](#)), a simple uterus, and absence of a cervix in female specimens ([Cetica, Aldana Marcos & Merani, 2005](#); [Rossi et al., 2011](#)), polyovular follicles in female armadillos of the family Chlamyphoridae ([Cetica, Aldana Marcos & Merani, 2005](#)), and polyembryony with identical quadruplets in the nine-banded armadillo (*Dasypus novemcinctus*; [McBee & Baker, 1982](#)). These data demonstrate the unique character of Xenarthrans and emphasize the necessity to study the anatomy of each species in detail.

The present study aimed to collect basic data on the reproductive morphology of giant anteaters, thus providing fundamental knowledge for future conservation efforts of the species.

MATERIALS & METHODS

Specimen collection

Reproductive tracts from 23 male and 21 female giant anteaters were collected during necropsies performed on road-kill specimens at the Federal University of Uberlândia (UFU, Minas Gerais, Brazil) and in cooperation with the Anteaters & Highways Project (Mato Grosso do Sul, Brazil). The samples were collected under the license no 49266-1 (UFU) and no 53798-10 (Anteaters & Highways Project) obtained by the Biodiversity Authorization and Information System (SISBIO, Brazil). The genetic resource access was registered under SisGen Cadastro no ADD1BBD.

Age determination

Giant anteaters do not possess teeth ([McDonald, Vizcaíno & Bargo, 2008](#)), which are frequently used for age estimation in other wild animal species ([Morris, 1972](#)). Age determination was therefore based on the bodyweight of the specimens. In literature, a bodyweight (BW) of 22–39 kg is indicated for adult giant anteaters ([Aguilar & Superina, 2015](#)). Considering that the weight of the giant anteater carcasses used in the present study was sometimes reduced by the loss of tissue or blood due to vehicle collision, the following specimens were included: 21 adult male animals \geq 28 kg BW, two young males $<$ 6 kg BW, 19 adult female animals \geq 24 kg BW and two young females $<$ 2 kg BW.

Macroscopic and microscopic analyses

During necropsies, the reproductive tract was examined *in situ* and was subsequently removed as a whole. The genital organs were studied macroscopically and morphometric measurements were taken. Representative samples of all structures were fixed in 10% neutral buffered formalin. Additionally, fragments of the testes were fixed in Bouin's solution.

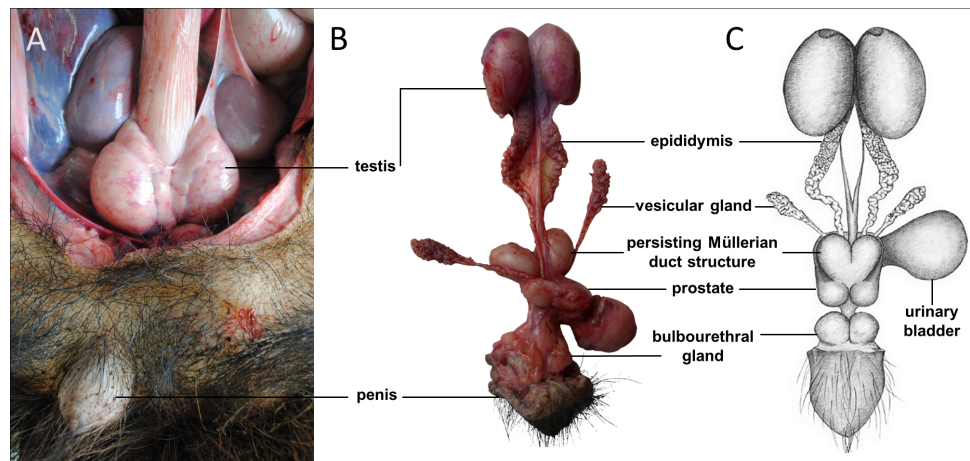


Figure 1 Macroscopic aspects of the genital organs of the adult male giant anteater. Genital organs (A) *in situ*; (B) dissected organs, ventral view; (C) schematic drawing of dissected organs, dorsal view.

Full-size [DOI: 10.7717/peerj.11945/fig-1](https://doi.org/10.7717/peerj.11945/fig-1)

Samples were then processed for histological analyses following standard protocols: dehydration by increasing concentrations of ethanol, clearance in xylene, and embedding in paraffin wax. For light microscopic observation, 5 μ m thick tissue sections were mounted on slides and stained with hematoxylin and eosin.

RESULTS

Morphological findings were basically the same in young and adult specimens. Therefore, the description will not be subdivided according to age. However, some differences between age classes will be pointed out in the text.

Sexual dimorphism

Sexual dimorphism in giant anteaters was not apparent, and male and female animals could only be distinguished externally by close inspection of the external genital organs. As the species is testicond, no scrotum was visible in the male (Fig. 1), and even penis and vulva were similar in size and shape.

Male genital organs

Testes, epididymides and deferent ducts

The testes of the giant anteater were located in the caudal abdominal cavity, mediocaudally to the kidneys (Fig. 1A). They were oval, covered by a fibrous capsule, the tunica albuginea, and connected at the medial face by a strand of dense connective tissue (Figs. 1, 2A–2F). In adult specimens, the length of the right and left testes was 6–7 cm and the width and height measured 3–4 cm. Fine strands of connective tissue, radiating from the tunica albuginea, divided the testicular parenchyma in lobules and merged centrally to form the mediastinum testis (Fig. 2D). The testicular parenchyma was composed of convoluted seminiferous tubules, and testicular stroma containing small clusters of Leydig cells and blood or lymphatic vessels (Figs. 2B, 2E). The seminiferous tubules were lined by a

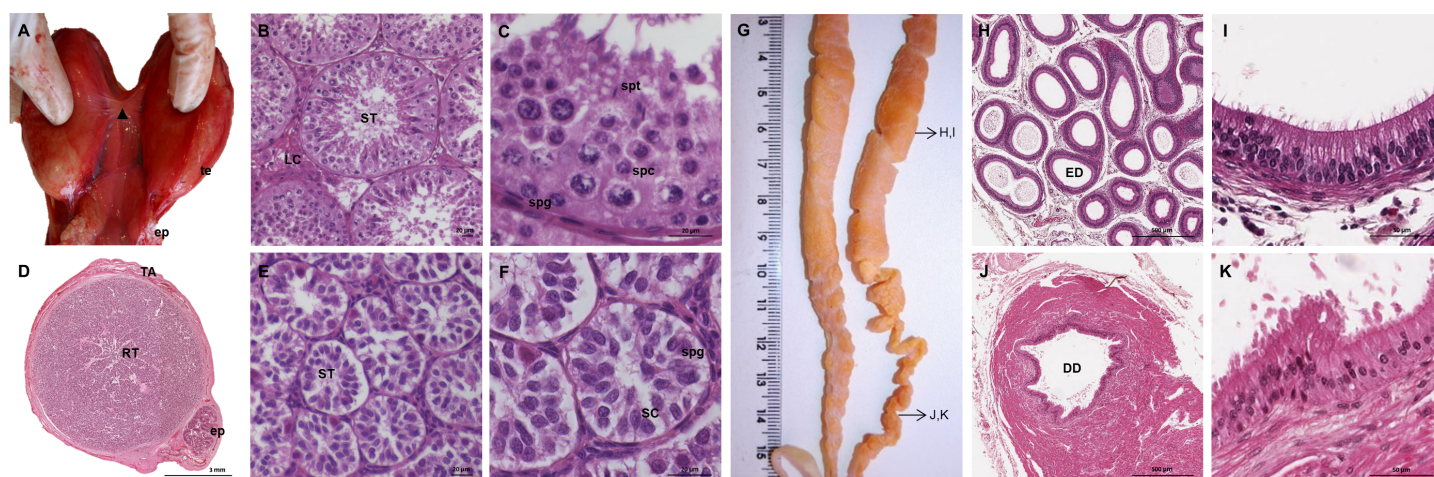


Figure 2 Macroscopic and microscopic aspects of the testes, epididymides and deferent ducts in the adult and young male giant anteater. (A–C) Testes of an adult giant anteater, (A) dorsal view of the testes, arrowhead: dense connective tissue, te: testis, ep: epididymis; (B) cross-section of a testis, ST: seminiferous tubules, LC: Leydig cells; (C) seminiferous epithelium in detail, spg: spermatogonia, spc: spermatocytes, spt: spermatids; (D–F) testis of a young giant anteater (D) cross-section of the testis, TA: tunica albuginea, RT: rete testis, ep: epididymis; (E) testis, ST: seminiferous tubules; (F) seminiferous tubules in detail, SC: Sertoli cell, spg: spermatogonia; (G) dorsal view of the epididymides and deferent ducts of an adult giant anteater, arrows indicating the sampled regions for histological sections; (H–I) cross-section of the epididymis, ED: epididymal duct; (J–K) cross-section of the deferent duct, DD: deferent duct. Hematoxylin-eosin staining.

Full-size DOI: 10.7717/peerj.11945/fig-2

germinal epithelium, in which different stages of spermatogenic cells were observed in adult animals: spermatogonia, spermatocytes, spermatids, and spermatozoa in the tubular lumen (Fig. 2C). The ovoid nuclei of the Sertoli cells were located in the basal to medium compartment of the germinal epithelium. In young animals, the seminiferous tubules were composed only of Sertoli and some spermatogonial cells (Fig. 2F). The seminiferous tubules opened into the rete testis, a network of anastomosing tubules, located in the mediastinum and lined by a simple squamous epithelium. The rete testis emptied at the cranial testis pole *via* several efferent ductules into the epididymal duct, thus forming the head of the epididymis. The epididymal duct was lined by pseudostratified columnar epithelium with stereocilia, and surrounded by a layer of circularly oriented smooth muscle fibers. It was highly coiled and extended caudally in the epididymal body along the medial face of the testis (Figs. 2G–2I). Surpassing the caudal pole of the testis, the lumen of the epididymal duct and the smooth muscle layer increased gradually, continuing imperceptibly in the deferent duct, a thick-walled muscular tube with longitudinal mucosal folds and pseudostratified columnar epithelium (Figs. 2J, 2K). The deferent duct finally penetrated the prostate gland from dorsal and opened into the urethra on the seminal colliculus.

Accessory sexual glands

The prostate gland was situated caudal to the urinary bladder (Fig. 1). It consisted of disseminated glandular tissue spread in the urethral wall and a compact glandular mass, englobing the urethra. The secretory units of the prostate gland, lined by pseudostratified epithelium, anastomosed with each other and drained into the urethra. The non-glandular

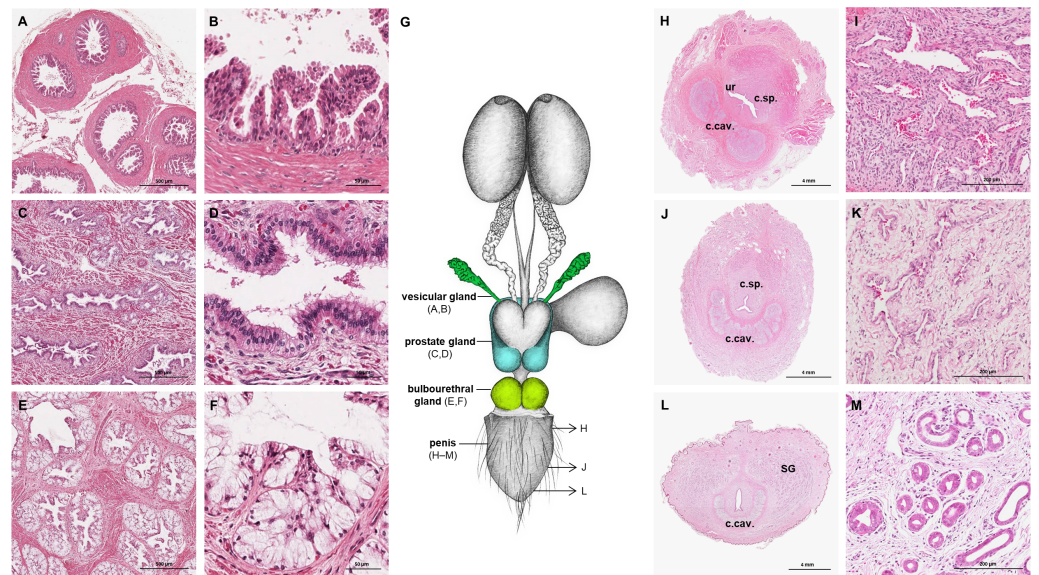


Figure 3 Macroscopic and microscopic aspects of the accessory sexual glands and the penis in the adult and young male giant anteater. (A–F) Accessory sexual glands in an adult giant anteater, (A–B) vesicular gland; (C–D) prostate gland; (E–F) bulbourethral gland; (G) schematic drawing of the genital organs, dorsal view, in color: accessory sexual glands, arrows: indicating the sampled regions for histological sections of the penis; (H, J, L) penis of a young giant anteater; (H) proximal cross-section, ur: urethra; c. sp.: corpus spongiosum, c.cav.: corpus cavernosum; (J) middle cross-section, c.sp.: corpus spongiosum, c.cav.: corpus cavernosum; (L) distal cross-section, c.cav.: corpus cavernosum, SG: sudoriferous glands; (I) corpus cavernosum; (K) corpus spongiosum; (M) sudoriferous glands. Hematoxylin-eosin staining.

Full-size [DOI: 10.7717/peerj.11945/fig-3](https://doi.org/10.7717/peerj.11945/fig-3)

stroma consisted of bundles of smooth muscle cells, separated by strands of dense connective tissue (Figs. 3C, 3D). The paired vesicular glands, elongated structures consisting of a coiled tube, were situated lateral to the terminal part of each deferent duct (Fig. 1). They penetrated the prostate gland and opened separately from the deferent ducts on the seminal colliculus. The mucosa formed numerous folds, lined by pseudostratified columnar epithelium, and was surrounded by a thick layer of smooth muscle (Figs. 3A, 3B). The distance from the free extremity of the penis to the seminal colliculus measured around nine cm in adult males. The bulbourethral glands were situated dorsolateral to the bulb of the penis (Fig. 1). They were ovoid-shaped and invested by a dense connective tissue capsule. The epithelium of the secretory units, mucous acini, was composed of simple columnar cells with abundant foamy cytoplasm and basal nuclei, and the excretory ducts opened into the urethra (Figs. 3E, 3F).

Persisting Müllerian ducts

In all examined males, a tubular remnant of the partially fused Müllerian (or paramesonephric) ducts was observed, extending from the seminal colliculus to the epididymides (Figs. 1, 4). In its caudal portion, the muscular tube showed two separate lumina and passed from the seminal colliculus through the prostate gland, forming two vesicular dilatations dorsal to it. The mucosa of this section was thrown into numerous folds and lined by a columnar epithelium (Figs. 4I–4K). In some specimens, a murky yellowish

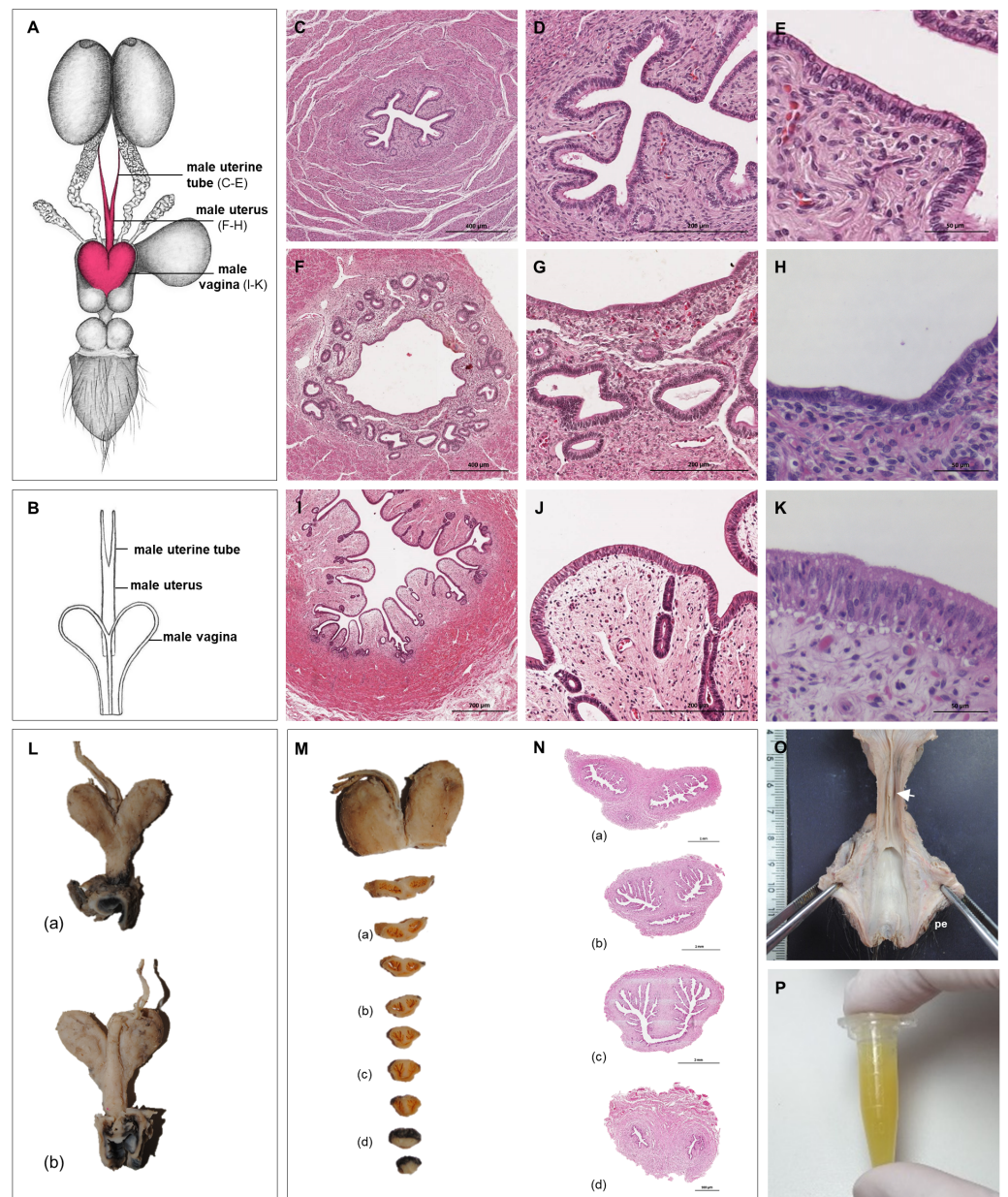


Figure 4 Macroscopic and microscopic aspects of the persisting Müllerian duct structures in the adult and young male giant anteater. (A) Schematic drawing of the genital organs, dorsal view, in red: persisting Müllerian duct structure; (B) schematic drawing of the persisting Müllerian duct structure, dorsal view, (C–K) cross-sections of the persisting Müllerian duct structure in an adult giant anteater; (C–E) distal segment with characteristics of a uterine tube; (F–H) middle segment with characteristics of a uterus; (I–K) proximal segment with characteristics of a vagina; (L) photographs of the dissected persisting Müllerian duct structure of a young giant anteater, (a): dorsal view, (b): ventral view and serial sections (M–N); (O) distal segment of the genital organs of a young male giant anteater, ventral view, longitudinally cut, arrow: seminal colliculus, pe: penis; (P) secretion found in the lumen of the persisting Müllerian duct structure. Hematoxylin-eosin staining.

Full-size DOI: 10.7717/peerj.11945/fig-4

fluid was observed in the lumen (Fig. 4P). After forming the vesicular dilatations, the two lumina fused into one lumen, and the tube continued cranially in the genital fold, medial to the deferent ducts. This part of the organ displayed a thick muscular wall, and a mucosa lined by a simple cuboidal epithelium with tubular glands opening on the epithelial surface (Figs. 4F–4H). After approximately 3–4 centimeters, the tubular structure bifurcated and attached with one elongation each onto the left and right epididymal corpus, at the medial face of the intraabdominal testes. In some males, these thin extensions showed a minute lumen and mucosal folds covered by a simple cuboidal epithelium (Figs. 4C–4E). In other specimens, a lumen was not detected. The Müllerian duct remnant had a total length of 7–10 cm in adult specimens, and showed a consistent morphology in all adult and young individuals. The microscopic features of the structure matched characteristics of the female genital organs: the caudal section with two lumina and two vesicular dilatations resembled the female vagina, the middle portion with a single lumen corresponded to a uterus, and both extensions showed characteristics of uterine tubes.

Penis

The penis was situated immediately ventral to the anus, resulting in a very short perineum. It was conical, was between 5 and 6 cm long in adult animals and directed caudally (Fig. 1). It was covered along its entire length by thick skin with occasional coarse hair. A prepuce was not formed, and the urethra opened through a small orifice on the free extremity. At the caudodorsal aspect of the penis, a median crest ran from the perineum to the urethral opening. The penis was composed of two erectile tissues: the paired ventral corpora cavernosa and the dorsal corpus spongiosum (Figs. 3H–3L). The corpora cavernosa were proximally divided by a strand of connective tissue, and fused distally to surround the corpus spongiosum in a semi-circle. The corpus spongiosum enclosed the urethra and narrowed distally, without forming a glans penis. Both erectile tissues consisted of cavernous spaces and trabeculae of connective tissue and smooth muscle fibers (Figs. 3I, 3K). In the distal penile segment, they were flanked by an agglomeration of numerous sudoriferous glands, lined by a simple cuboidal epithelium (Figs. 3L, 3M).

Female genital organs

Ovaries

The ovaries were oval, slightly flattened, and presented the following measurements in adult females: a length of 2–2.5 cm, a width of 0.7–1 cm and a height of 0.4–0.5 cm. They were located caudal to the kidneys and oriented in a horizontal plane. A dense proper ligament of the ovary connected the medial pole to the base of the uterus (Fig. 5). The ovary was covered by a tunica albuginea of dense connective tissue and a simple cuboidal epithelium. The ovarian parenchyma consisted of the outer cortex and a thin central medulla. The cortical zone contained different stages of developing or degenerating follicles, and corpora lutea surrounded by irregularly arranged connective tissue (Figs. 6A–6D). Occasionally, agglomerations of cells with ovoid or spherical nuclei with granulated chromatin could be observed in the ovarian tissue. Most of those cord-like structures were solid, but in a few, a central lumen was beginning to canalize (Figs. 6G–6I).

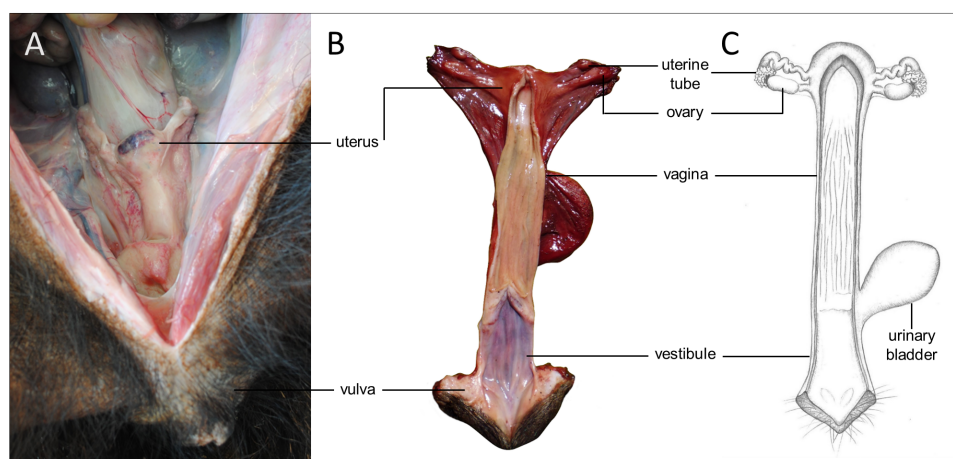


Figure 5 Macroscopic aspects of the genital organs of the adult female giant anteater. Genital organs (A) *in situ*; (B) dissected organs, dorsal view, longitudinally cut; (C) schematic drawing of dissected organs, dorsal view, longitudinally cut.

Full-size DOI: [10.7717/peerj.11945/fig-5](https://doi.org/10.7717/peerj.11945/fig-5)

Uterine tubes

The uterine tubes were thin convoluted ducts, extending in the mesosalpinx from the ovaries to the fundic portion of the uterus (Figs. 6J, 6K). The distal portion of the uterine tube, the infundibulum, opened in the peritoneal cavity and surrounded the lateral pole of the ovary with fingerlike projections, the fimbriae (Figs. 6M, 6P). The infundibulum then continued in the ampulla with irregularly branching longitudinal mucosal folds, a simple cuboidal epithelium, and a thin muscular wall (Figs. 6N, 6Q). Gradually, the lumen and the number of longitudinal folds decreased, while the width of the muscular wall of the oviduct increased. The terminal part, the isthmus, penetrated the uterine wall and opened in the fundic portion of the uterus (Figs. 6O, 6R).

Uterus

The uterus was a simple pear-shaped organ with a thick muscular wall and was dorsoventrally flattened (Fig. 5). In adult animals, the uterine body measured a length of 3–5 cm, a width of 2.5–3 cm, and a height of 1.5–2 cm. The endometrium was lined by a simple cuboidal to columnar epithelium. Uterine glands of a simple tubular type opened on the endometrial surface and the submucosa was composed of connective tissue surrounding the uterine glands. The characteristics of the uterine glands and thickness of the endometrium varied with the oestrous cycle of the female. The myometrium consisted of bundles of smooth muscle (Figs. 7A–7C). The fundic portion of the uterus was covered by serosa, and received on each side the openings of the uterine tubes. The lumen of the uterus continued directly into the vaginal canal (Figs. 7D–7G). In two females with an involuting uterus, however, a constriction at the base of the uterus was observed.

Vaginal canal

In adult animals, the vaginal canal extended approximately 6–10 cm caudally, presented a wide lumen and a thin wall with longitudinal mucosal folds, lined by a simple columnar

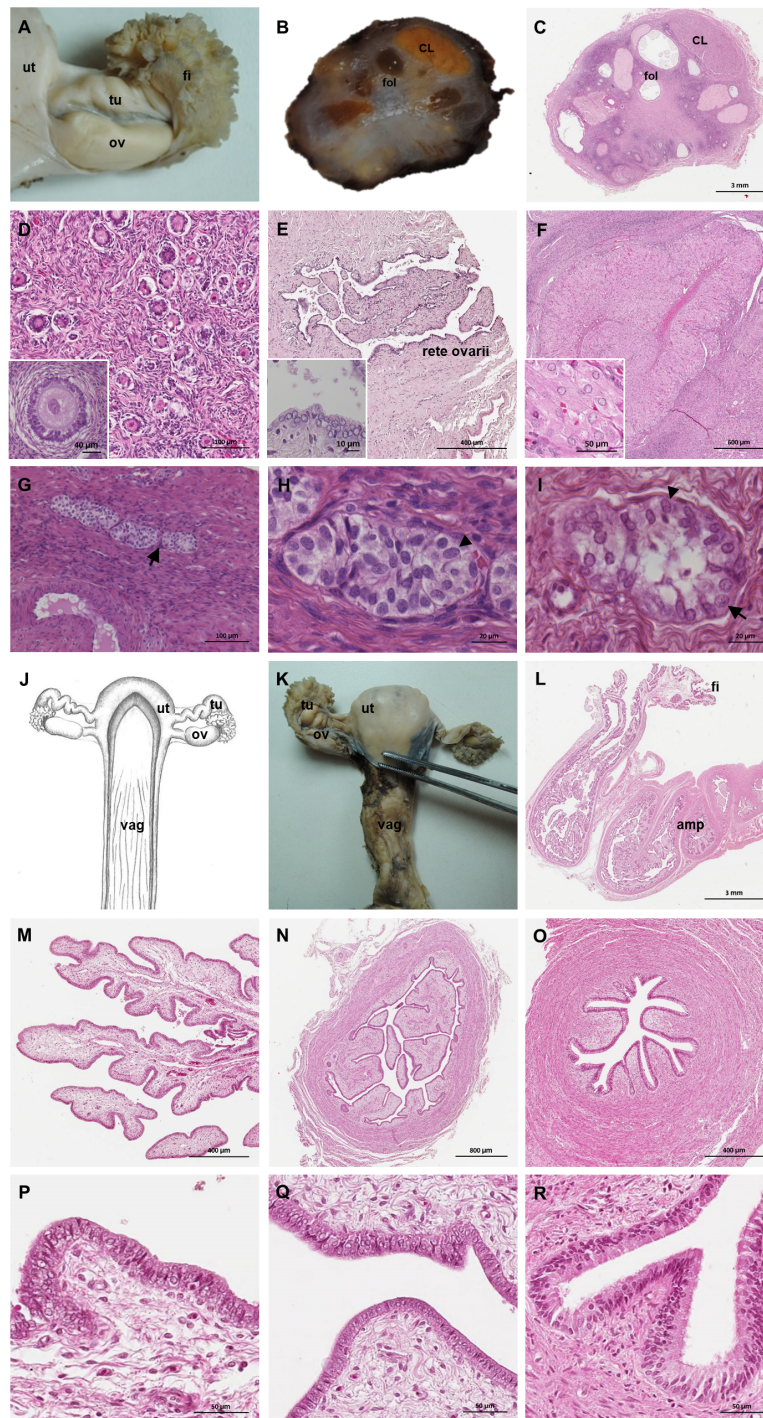


Figure 6 Macroscopic and microscopic aspects of the ovary and uterine tube of the adult female giant anteater. (A) Dorsal view of the ovary and uterine tube, ut: uterus, tu: uterine tube, fi: fimbriae, ov: ovary; (B) photograph and (C) photomicrograph of a longitudinal section through the ovary, CL: corpus luteum, fol: follicle; (D) ovarian tissue, inset: primary follicle; (continued on next page...)

Full-size  DOI: 10.7717/peerj.11945/fig-6

Figure 6 (...continued)

(E) lateral pole of the ovary with the rete ovarii, inset: epithelium of the rete ovarii; (F) corpus luteum, inset: luteal tissue; (G) ovarian tissue with cord-like structures (arrow); (H–I) cord-like structures in detail, arrowheads: ovoid nuclei, arrow: spherical nucleus; (J) schematic drawing and photomicrograph (K) of uterus (ut), uterine tube (tu), ovary (ov) and vagina (vag); (L) longitudinal section through the uterine tube, fi: fimbriae, amp: ampulla; (M, P) fimbriae; (N, Q) ampulla; (O, R) isthmus of the uterine tube. Hematoxylin-eosin staining.

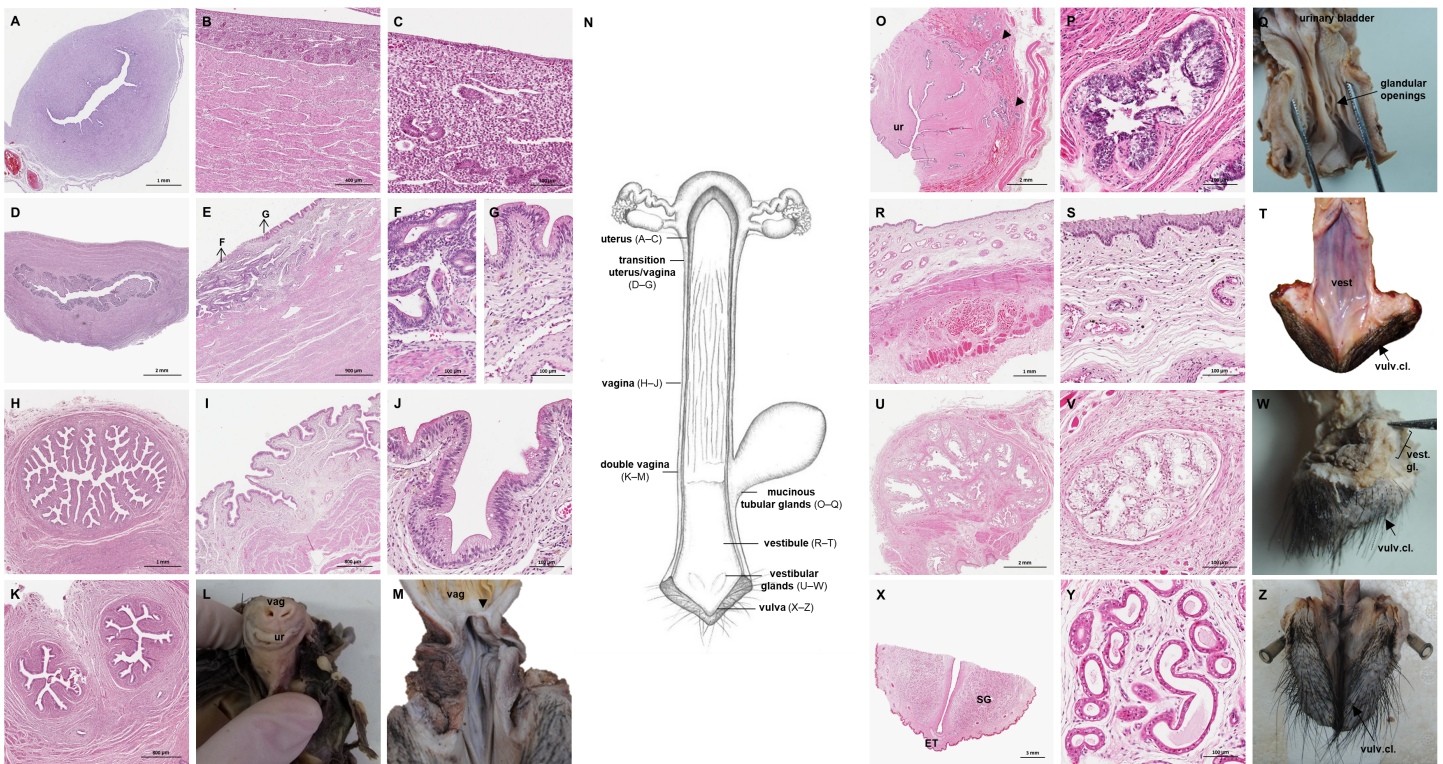


Figure 7 Macroscopic and microscopic aspects of the uterus, vagina, vaginal vestibule and glandular structures in the caudal genital organs of the adult and young female giant anteater. (A) Cross-section through the uterus of a young giant anteater; (B, C) endometrium and myometrium of an adult giant anteater in detail; (D) cross-section through the area of transition between uterus and vagina of a young giant anteater and (E) longitudinal section through the area of transition between uterus and vagina of an adult giant anteater, arrows indicating (F) section with uterine characteristics and (G) section with vaginal characteristics; (H–J) cross-section through the middle portion of the vagina and (K) photomicrograph and (L) photograph of a cross-section through the caudal vagina of a young giant anteater, displaying two lumina, vag: vagina, ur: urethra; (M) caudal vagina of an adult giant anteater, dorsal view, longitudinally cut, vag: vagina, arrowhead: septum separating the two vaginal lumina; (N) schematic drawing of the genital organs, dorsal view, longitudinally cut; (O, P) cross-section through the urethral wall near the opening into the vestibule of an adult giant anteater; (O) ur: urethral lumen, arrowhead: mucinous tubular glands; (P) mucinous tubular glands in detail; (Q) urethra of an adult giant anteater, longitudinally cut, arrow indicating location of the glandular structures; (R, S) vaginal vestibule and (T) caudal segment of the genital organs of an adult giant anteater, dorsal view, longitudinally cut, vest.: vestibule, vulv.cl.: vulvar cleft; (U, V) cross-section through the vestibular gland and (W) lateral view of the caudal segment of the genital organs of an adult giant anteater, vulv.cl.: vulvar cleft, vest.gl.: vestibular glands dorsal to vulvar cleft; (X) cross-section through the vulva of a young giant anteater, ET: erectile tissue, SG: sudoriferous glands and (Y) agglomeration of sudoriferous glands; (Z) dorsal view of the vulvar cleft of an adult giant anteater. Hematoxylin-eosin staining.

Full-size DOI: 10.7717/peerj.11945/fig-7

epithelium (Figs. 7H–7J). The caudal portion of the vagina had two lumina that were separated by a longitudinal septum (Figs. 7K–7M). The thickness of the septum varied among the specimens: in young and occasionally in adult animals, the septum was thick, whereas it was reduced to a thin membrane in most adult specimens. The double vagina opened with two apertures into the vaginal vestibule, directly dorsal to the opening of the urethra.

Persisting Wolffian ducts

Well-differentiated remnants of the Wolffian (or mesonephric) ducts were observed in all examined female giant anteaters (Fig. 8). Two ducts with a thin muscular wall and a central lumen lined by a simple cuboidal epithelium originated in the ventral vaginal wall at the height of the vaginal opening into the vestibule. The ducts passed in a cranial direction through the ventral vaginal and uterine wall (Figs. 8D–8H). Finally, the diameter of the ducts decreased, and each duct extended highly coiled alongside the ipsilateral uterine tube until the hilus at the lateral pole of the ovary (Figs. 8B, 8C). There, a highly ramified network of small ducts formed a rete ovarii with a simple cuboidal epithelium (Fig. 6E).

Vestibule and Vulva

In the vestibule, the vaginal columnar epithelium changed into a stratified squamous epithelium resting on highly vascularized connective tissue with an extensive venous plexus (Figs. 7R–7T). The urethra opened on the floor of the vestibule. Mucinous tubular glands with columnar epithelium could be found in the urethral wall near the opening into the vestibule and corresponded to a male prostate gland (Figs. 7O–7Q). Furthermore, a compound of tubuloalveolar glands similar to male bulbourethral glands was located in the lateral wall of the vestibule. The acini of those vestibular glands were lined by a simple columnar epithelium (Figs. 7U–7W). The vestibule opened to the exterior through a vertical vulvar cleft framed by two labia. At the ventral commissure of the vulva, a half-moon shaped erectile tissue could be observed, flanked laterally on each side by an agglomeration of sudoriferous glands with numerous secretory tubules with simple cuboidal epithelium (Figs. 7X–7Z). The vulva was situated directly ventral to the anus and the conical shape resembled the penis of the male animal. The only external difference to the male copulatory organ was a longitudinal cleft of 3–5 cm opening into the vestibule. In adult animals, the length of the vestibule from the ventral vulvar commissure to the vaginal opening was 7–10 cm.

DISCUSSION

Both male and female giant anteaters possess unique morphological characteristics of the reproductive tract, adding to the peculiar features that single out the species among other mammals.

Male genital organs

In male giant anteaters, a notable feature is the intraabdominal position of the testes, a shared characteristic among all Xenarthrans. In anteaters (Kaudern, 1914; Bartmann, Beyer & Wißdorf, 1991; Rossi et al., 2012) and sloths (Grassé, 1955; Barretto, Amorim &

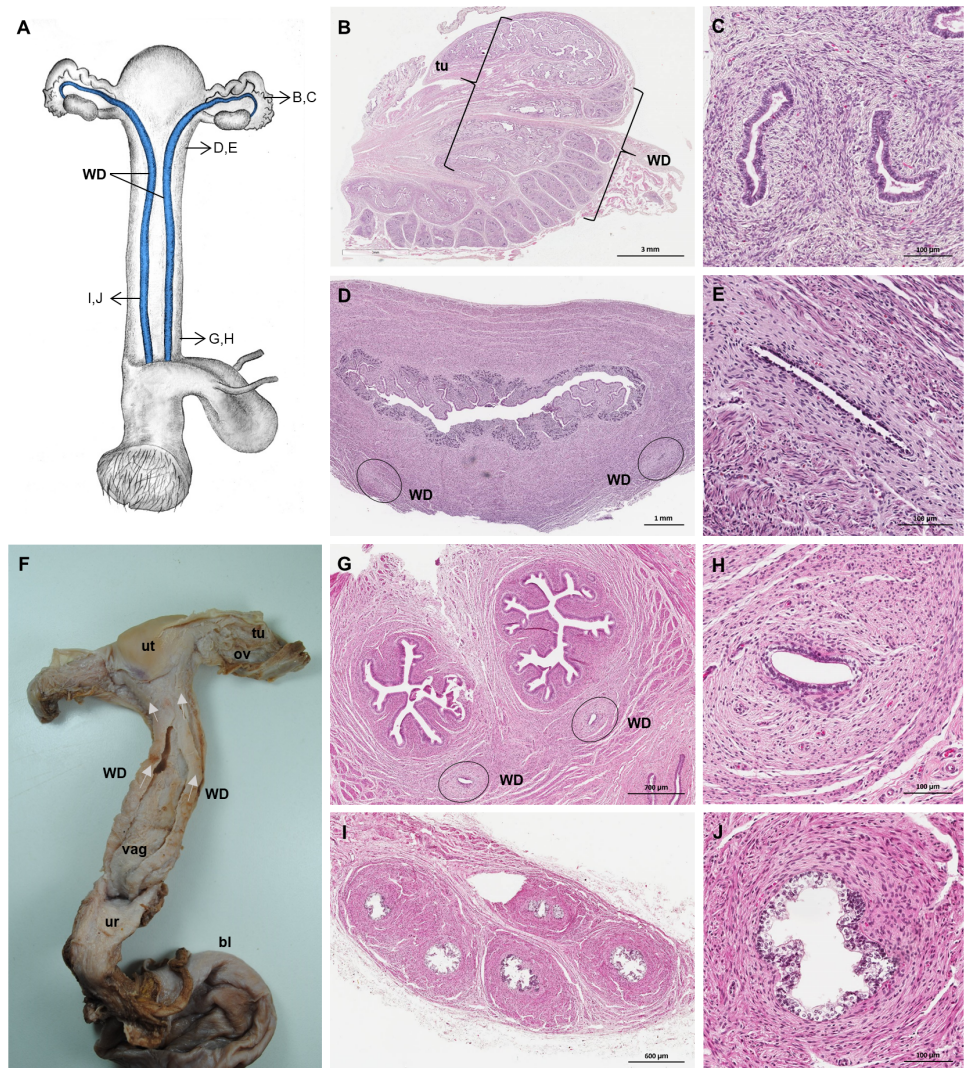


Figure 8 Macroscopic and microscopic aspects of the persisting Wolffian duct structures in the adult and young female giant anteater. (A) Schematic drawing of the genital organs, ventral view, in blue: persisting Wolffian ducts (WD), arrows: indicating regions for histological sections (B, D, G, I); (B) longitudinal section through the uterine tube in an adult giant anteater (tu) with accompanying Wolffian duct (WD); (C) Wolffian duct in B in detail; (D) cross-section through the area of transition from uterus to vagina in a young giant anteater, encircled: Wolffian ducts (WD) passing through the muscular wall; (E) Wolffian duct in D in detail; (G) cross-section at the height of the double vagina in a young giant anteater, encircled: Wolffian ducts (WD) passing through the vaginal wall; (H) Wolffian duct in G in detail; (I) cross-section through the Wolffian duct in an adult giant anteater; (J) Wolffian duct in I in detail; (F) photograph of the genital organs with dissected Wolffian ducts in an adult giant anteater, ventral view, bl: bladder; ur: urethra; vag: vagina; ut: uterus; ov: ovary; tu: uterine tube; WD: Wolffian duct; arrows: indicating the course of the Wolffian ducts.

Full-size  DOI: 10.7717/peerj.11945/fig-8

Falcão, 2013), the testes are found caudomedially to the kidneys and joined to each other. In contrast, in armadillos, the testes occupy a more caudal and inguinal position, some authors mentioning the presence of a short peritoneal protrusion into the inguinal canal (*Rapp, 1852; Kaudern, 1914; Newfang, 1947*). Intraabdominal testes occur also in most afrotherian species, Eulipotyphla, and Pholidota (*Kleisner, Ivell & Flegr, 2010; Lovegrove, 2014*). It is still controversial whether the undescended testes position is an ancestral condition or a derived characteristic in placental mammals. Some authors argue that a descended scrotal position of the testes evolved early in mammalian evolution, and was independently lost in several lineages (*Werdelin & Nilsson, 1999; Sharma et al., 2018; Chai et al., 2021*). In contrast, *Kleisner, Ivell & Flegr (2010)* and *Lovegrove (2014)* suggest that abdominal testes represent the ancestral condition in (eutherian) mammals. However, the cited studies are either based on outdated phylogenetic data (*Werdelin & Nilsson, 1999*) or assumptions concerning the location of testes in Xenarthrans that are either incorrect (testicular descent, *Sharma et al., 2018*) or imprecise, not considering the differences in the position of the testes in anteaters and sloths compared with armadillos (as described in: *Kaudern, 1914; Rossi et al., 2012; Barretto, Amorim & Falcão, 2013*).

Some authors (*Werdelin & Nilsson, 1999; Rodrigues et al., 2008*) suggest that the internal location of the testes in Xenarthrans is linked to their low body temperature (*Aguilar & Superina, 2015*: around 30 °C to 35 °C), which could ensure functional spermatogenesis despite the internal location of the gonads. Cryptorchid testes in other mammalian species are usually prone to defects in sperm production (*Setchell, 2006*).

In addition to the absence of a scrotum, the small and conical penis of the giant anteater contributes to the difficulty of differentiating male and female individuals by simple inspection. As stated above, the penis resembles the female vulva in size and shape, but males can be identified by a small urethral orifice at the free extremity of the penis, this contrasting with a longitudinal vulvar cleft in the female. Likewise, the external genital organs can be easily confounded in male and female sloths (*Favoretto et al., 2015*). For giant anteaters, *Bartmann, Beyer & Wißdorf (1991)* mentioned a scrotum-like structure directly ventral to the anus. In the present study, however, this structure proved to be merely the slightly concave dorsal face of the penis. Due to the small size of the penis and limited erectile tissue and function, *Bartmann, Beyer & Wißdorf (1991)* expect only a shallow penetration during copulation of giant anteaters. Data of this study suggest that the penis does not penetrate the vagina due to a vestibular length of 7–10 cm in the female and a penis length of only 5–6 cm. The extensive sudoriferous glands observed in the distal segment of the penis might play a role in intraspecific chemical communication.

Similar to other mammalian species (*König & Liebich, 2014*), the giant anteater possesses three accessory sexual glands that open into the urethra and contribute with secretion to the seminal plasma: the prostate, vesicular and bulbourethral glands. The same was observed in other xenarthran species: the silky anteater (*Cyclopes didactylus*), the southern tamandua (*Kaudern, 1914; Rossi et al., 2012*), and the nine-banded armadillo (*Glover, 1963; Cardoso et al., 1985*). In the two-toed sloth (*Choloepus hoffmanni*) and *Bradypus* spp., *Wislocki (1928)* and *Grassé (1955)* state that the bulbourethral glands were missing. In the present study, the distance from the free extremity of the penis to the seminal colliculus measured

around nine cm in adult giant anteaters, and might serve as a landmark when executing semen collection procedures, such as electroejaculation, transrectal massage or urethral catheterization.

The well-differentiated remnant of the Müllerian ducts described in this study has been previously identified in giant anteaters as *uterovagina masculina* by [Kaudern \(1914\)](#) and [Bartmann, Beyer & Wißdorf \(1991\)](#). The observations by [Kaudern \(1914\)](#), however, are based on an incomplete reproductive tract of one specimen and [Bartmann, Beyer & Wißdorf \(1991\)](#) do not provide any macroscopic or microscopic details. The structure is most likely the result of some aberration during fetal sexual differentiation in male individuals.

Sexual differentiation in mammals is a highly complex process and various developmental aberrations can cause retention of vestigial genital structures of the opposite sex. Both genetically male and genetically female embryos possess a pair of bipotential gonads and two pairs of genital ducts, the Wolffian and the Müllerian ducts, which are precursors of male and female genital organs, respectively ([MacLaughlin, Teixeira & Donahoe, 2001](#); [Ohnesorg, Vilain & Sinclair, 2014](#)). Sex determination begins when the bipotential gonads differentiate into either testes or ovaries: in genetic males, testes differentiation starts when a gene on the Y chromosome, the SRY gene, is expressed in the embryonic gonad and initiates the development of Sertoli and Leydig cells ([Albrecht & Eicher, 2001](#); [Kanai et al., 2005](#); [She & Yang, 2016](#)). Shortly after the onset of SRY expression, SOX9 is upregulated ([Ohnesorg, Vilain & Sinclair, 2014](#); [Stévant, Papaioannou & Nef, 2018](#)) and can substitute for all functions of SRY ([Kanai et al., 2005](#)). Leydig cells in the fetal testis secrete testosterone, which causes the differentiation of the male genital duct and urogenital sinus into the epididymis, deferent duct, and accessory sexual glands ([Dyche, 1979](#); [MacLaughlin, Teixeira & Donahoe, 2001](#); [Marker et al., 2003](#); [Edwards, Moore & Guillette Jr, 2006](#); [Welsh, Suzuki & Yamada, 2014](#)). Furthermore, testosterone initiates the formation of the external male genitalia from the genital tubercle ([MacLaughlin, Teixeira & Donahoe, 2001](#); [Welsh, Suzuki & Yamada, 2014](#)). The Sertoli cells in the fetal gonad produce the Anti-Müllerian Hormone (AMH: [She & Yang, 2016](#)), which binds to the Anti-Müllerian Hormone receptor type 2 (AMHR2) on the surface of Müllerian duct mesenchymal cells, thus causing regression of the female genital duct ([Dyche, 1979](#); [Stévant, Papaioannou & Nef, 2018](#)).

Rudimentary cystic or tubular remnants of the Müllerian ducts have been observed sporadically in humans ([Drake, Vogl & Mitchell, 2008](#)), several domestic species ([Swoboda, 1929](#)), and even some Xenarthrans ([Kaudern, 1914](#)). Better differentiated developmental remnants of the Müllerian ducts with distinct uterine and vaginal characteristics are linked to the Persisting Müllerian Duct Syndrome (PMDS) that occurs in otherwise phenotypically normal male individuals (XY), and is mostly connected to a mutation in AMH, AMHR2 or downstream signaling pathways: the PMDS sporadically affects humans ([Josso et al., 2005](#); [Picard et al., 2017](#)), interestingly 85% of the European bison (*Bison bonasus*; [Panasiwicz et al., 2015](#)), and is also frequently observed in the miniature schnauzer ([Lyle, 2007](#); [Wu et al., 2009](#); [Vegter et al., 2010](#); [Meyers-Wallen, 2012](#)). Only very few species are known where Müllerian duct structures persist in all male individuals: some tree shrew species (Tupaia

spp.; Alcalá & Conaway, 1968) and beavers (*Castor* spp.; Conaway, 1958; Doboszynska & Zurowski, 1981) are mentioned in literature. Similarly, in the present study, the Müllerian duct remnants were observed in all male giant anteaters and constituted the normal morphological condition in this species. In contrast to the beaver, where highly variable interindividual characteristics of those embryonic structures were observed (Conaway, 1958), the morphology of the Müllerian duct remnants differed little between male giant anteaters. This was even more remarkable as the remnants were not just a miniature version of the female genital organs but presented very distinct characteristics: macroscopically, the tube-like uterine and bilobed vesicular vaginal structure in the male did not resemble the female simple uterus with adjacent straight vaginal canal.

In literature, a confusing multitude of terms has been applied to remnants of the Müllerian ducts, ranging from *utriculus masculinus* (Swoboda, 1929; Drake, Vogl & Mitchell, 2008) to *uterus masculinus* (Kaudern, 1914; Conaway, 1958) or *vagina masculina* (Alcalá & Conaway, 1968). None of the aforementioned terms correctly describe the structure observed in the present study in male giant anteaters, which presents characteristics of uterus and vagina as well as uterine tubes.

The presence of the Müllerian duct remnant does not affect fertility in males, as it occurs in all male individuals of the species. The structure even has secretory functions and the yellowish secretion in its lumen, described in this study, presumably contributes to the seminal plasma. In electroejaculation procedures, ejaculate fractions with the same aspect have been collected in giant anteaters (personal observation, unpublished data). In other species, pathologies of Müllerian duct remnants have been reported, ranging from cystic degeneration (Atilola & Pennock, 1986; Ritchey et al., 1988; Kato et al., 2002) or neoplasia (Vignoli et al., 2020) to male pyometra (Wu et al., 2009). It is important to bear in mind these potential pathologies in reproductive medicine of the giant anteater. The etiology of the persistence of Müllerian duct structures in males is currently unexplained. Future research should therefore examine possible mutations of the AMH or AMHR2 genes or other involved factors.

Female genital organs

Unlike most other placental mammalian species, the female giant anteater possesses a simple uterus. Common uterine morphologies among placentalia are a bicornuate or double uterus (Kobayashi & Behringer, 2003). A simple uterus is rare, mainly occurring in primates (Kobayashi & Behringer, 2003; Hayssen & Orr, 2017), but has been described in other xenarthran species, like the southern tamandua (Rossi et al., 2011), sloths, and armadillos (Cetica, Aldana Marcos & Merani, 2005; Favoretto et al., 2015). The uterus of the female giant anteater continues directly in a long and thin-walled vaginal tube without forming a distinct cervical segment. In this study, however, in female specimens with an involuting uterus, a constriction at the base of the uterus was identified, which might serve as a microbiological and mechanical barrier during pregnancy. Similarly, Schauerte & Osmann (2012) observed a zone of more densely folded mucosa at the transition of the uterine body to the vagina in a female deceased intrapartum.

The vagina in the giant anteater, in contrast to the stratified squamous vaginal epithelium commonly observed in mammalian species (Liebich, 2010), is lined by columnar epithelium. It therefore resembles the columnar epithelium of the endocervix described in other mammals (Liebich, 2010). Yet, the anatomical region between the uterus and opening of the urethra corresponds to a vagina. Furthermore, the thin-walled tube does not show gross morphological similarities to the cervix of other mammalian species, such as a thick muscular wall and the capacity to function as a barrier (Liebich, 2010). Interestingly, the caudal part of the vagina in the female giant anteater displays two lumina. During organogenesis of the reproductive tract, the Müllerian ducts apparently fuse in the middle segment, forming a simple uterus and the cranial part of the single vaginal tube. Fusion is incomplete, however, in cranial and caudal segments of the Müllerian ducts, resulting cranially in paired uterine tubes, and caudally in a double vagina. Differences in the extent of fusion of the Müllerian ducts have been observed throughout mammalian species: marsupials with a double uterus and vagina at one extreme and primates with a simple uterus and vagina at the other extreme (Kobayashi & Behringer, 2003). Female giant anteaters with a simple uterus but double caudal vagina occupy a singular position here. Nevertheless, these findings match the theory of bidirectional fusion of the Müllerian ducts during formation of the female reproductive tract (Acién, Acién & Sánchez-Ferrer, 2009), according to which the fusion of the Müllerian ducts starts at the uterine isthmus and then continues in a cranial and caudal direction.

In the literature on the reproductive morphology of Xenarthrans, similar characteristics as revealed here, have been observed. However, while authors agree on the presence of a simple uterus, various terms have been employed to describe the tubular structure that was called the vagina in the present study: vagina (Owen, 1868: *Dasyopus peba*; Wislocki, 1928: *Bradypus griseus griseus*, *Choloepus hoffmanni peters*; Schauerte & Osmann, 2012: *Myrmecophaga tridactyla*), uterovaginal canal (Rossi et al., 2011: *Tamandua tetradactyla*), a segment of the uterus (Rapp, 1852: edentates; Newfang, 1947: *Dasyopus novemcinctus*; Favoretto et al., 2015: *Bradypus variegatus*) or cervix (Cetica, Aldana Marcos & Merani, 2005: several armadillo species). The double lumina observed in the present study in the caudal segment of the tubular structure denominated vagina here were observed as well in the southern tamandua and sloths (Rapp, 1852; Rossi et al., 2011), however, not in armadillos (Newfang, 1947; Cetica, Aldana Marcos & Merani, 2005).

In the ovaries of some giant anteaters, cord-like structures composed of cells with ovoid or spherical nuclei and occasionally the beginning of canalisation of a central lumen were observed. These structures resemble the seminiferous cords of fetal mammalian testes, which are characterized as solid cords composed of sustentacular Sertoli cells and primordial germ cells, which later on canalize to form the seminiferous tubules in the testes of adult animals (Dyce, Sack & Wensing, 2010).

Similar to male giant anteaters, which retain well-developed remnants of the female genital ducts, male morphological characteristics were described in the genital organs of all female specimens in this study. Apart from the seminiferous cord-like structures in the ovaries, glandular structures that are homologs of the male prostate and bulbourethral glands are well-developed, and coiled Wolffian ducts run from the ovaries along the

uterus and vagina, possibly due to some species-specific peculiarities during female sexual differentiation. While male sexual differentiation in placental mammals is induced by the Y chromosome-linked SRY-gene leading to the differentiation of the bipotential gonad into a testis, female sexual differentiation occurs in the absence of the SRY gene and under influence of X-linked genes, beginning with the differentiation of the bipotential gonad into ovaries (Mackay, 2000; Gardiner & Swain, 2014). Normally, in the absence of testosterone, the Wolffian ducts degenerate and, during further sexual differentiation, the Müllerian ducts develop into uterine tubes, the uterus, and the cranial portion of the vagina, while the female external genitalia develop autonomously without hormonal stimuli from the genital tubercle (MacLaughlin, Teixeira & Donahoe, 2001).

As detailed above, the process that leads to the development of genital organs is distinct for male and female mammals. Accordingly, the etiology of persisting genital duct structures of the opposite sex is not identical in male and female giant anteaters. The formation of supposedly seminiferous cord-like structures in the ovaries might be the result of some SRY downstream mutation in females. Female giant anteaters are not carriers of the SRY gene itself (Takami et al., 1998; Barragán-Ruiz et al., 2021), but other factors like SOX9 might be upregulated and lead to the formation of cords with Sertoli-like cells in the ovaries. Testis or medullary cords were also observed in fetal and adult ovaries of some armadillo species (Newfang, 1947; Enders, 1960; Cetica, Aldana Marcos & Merani, 2005). Furthermore, Cetica, Aldana Marcos & Merani (2005) identified rudimentary Wolffian duct remnants, such as epoophoron and a rete ovarii in female armadillos. Small remnants of the degenerating Wolffian ducts may also persist in humans (Hannema & Hughes, 2007). The presence of continuous and differentiated Wolffian ducts in all female giant anteaters, however, is an extraordinary finding, since development of those ducts requires an androgen source during sexual differentiation (Dyche, 1979; MacLaughlin, Teixeira & Donahoe, 2001; Welsh et al., 2009). Glandular structures observed in female giant anteaters, corresponding to male prostate and bulbourethral glands, have been mentioned in other mammalian species as well: homologs to the male prostate gland at the base of the bladder are denominated Skene gland (Zaviacic et al., 2000; Santos & Taboga, 2006), and the paired glands opening laterally into the vaginal vestibule are called major vestibular glands (Dyce, Sack & Wensing, 2010; König et al., 2014). The homologs in male mammals are derived from the urogenital sinus and, similar to the Wolffian ducts, differentiate under the influence of androgens (Marker et al., 2003). Whether the ovarian tissue with seminiferous cord-like structures in giant anteaters could function as a source of androgens during female sexual differentiation, and thus induce differentiation of the Wolffian ducts and glandular structures, needs to be clarified.

Similar to the Müllerian duct remnants in male giant anteaters, the persisting Wolffian ducts and the above-described glandular structures might have secretory functions in the female reproductive tract. Still, those structures could also give rise to pathological conditions mentioned in other mammalian species. Neoplasia, cystic degeneration or abscesses have been observed in remnants of Wolffian ducts as well as Skene glands and major vestibular glands in women (Blackwell & McElin, 1955; Copeland et al., 1986; Dodson et al., 1994; Omole, Simmons & Hacker, 2003).

There are only a few mammalian species where females develop male characteristics in genital organs. Female Iberian moles (*Talpa occidentalis*) possess bilateral ovotestes with both ovarian and testicular tissue, rudimentary epididymides, and a peniform clitoris but otherwise normally differentiated female genital organs (Jiménez et al., 1993; Zurita et al., 2003; Barrionuevo et al., 2004). Those females lack the SRY gene and Jiménez et al. (1993) suppose that a mutation in a non-Y-linked gene involved in the testis-determining pathway leads to the formation of testicular tissue in female gonads. In these ovotestes, Leydig cells produce testosterone and cause the differentiation of rudimentary epididymides (Jiménez et al., 1993), but Sertoli cells do not express AMH and therefore the Müllerian ducts develop into normal female genital organs (Zurita et al., 2003). Another example are female spotted hyaenas (*Crocuta crocuta*): internal genital organs are normally differentiated, but external genitals resemble a penis with false scrotum (Neaves, Griffin & Wilson, 1980; Lindeque & Skinner, 1982). In this case, both androgenic and non-androgenic mechanisms are involved: placental conversion of maternal ovarian androstenedione to testosterone and low serum concentrations of sex hormone-binding globulins, resulting in higher concentrations of free dihydrotestosterone (Glickman et al., 1992; Conley et al., 2020). The cases of Iberian moles and spotted hyaenas demonstrate that both androgens and other factors might be involved in the formation of male characteristics in the genital organs of females.

CONCLUSIONS

The giant anteater shows unique characteristics of the reproductive tract. Some features such as intraabdominal testes or a simple uterus are shared among xenarthran species. The persistence of well-developed genital duct structures of the opposite sex in both male and female giant anteaters, however, singles them out among other xenarthrans as well as mammalian species in general. Further investigations on the etiology and possible secretory functions of these remnants of the Müllerian and Wolffian ducts can help to better understand the reproductive peculiarities of this threatened species, and might also shed light on sexual differentiation in placental mammals in general.

ADDITIONAL INFORMATION AND DECLARATIONS

Funding

This study was funded by the German Academic Exchange Service (DAAD) and publication was supported by Deutsche Forschungsgemeinschaft and University of Veterinary Medicine Hannover, Foundation within the funding programme Open Access Publishing. Material collection was supported by the donors of the Anteaters & Highways Project listed at <http://www.giantanteater.org/>. The funders had no role in study design, data collection and analysis, decision to publish, or preparation of the manuscript.

Grant Disclosures

The following grant information was disclosed by the authors:
German Academic Exchange Service (DAAD).

The donors of the Anteaters & Highways Project.
The Fondation Segré as well as North American and European Zoos.

Competing Interests

The authors declare there are no competing interests.

Author Contributions

- Lilja Fromme conceived and designed the experiments, performed the experiments, analyzed the data, prepared figures and/or tables, authored or reviewed drafts of the paper, and approved the final draft.
- Débora R. Yogui, Mario Henrique Alves, Arnaud L.J. Desbiez and Marion Langeheine performed the experiments, authored or reviewed drafts of the paper, and approved the final draft.
- André Quagliatto, Ursula Siebert and Ralph Brehm conceived and designed the experiments, authored or reviewed drafts of the paper, and approved the final draft.

Animal Ethics

The following information was supplied relating to ethical approvals (i.e., approving body and any reference numbers):

The samples were collected under the licence no 49266-1 (UFU) and no 53798-10 (Anteaters & Highways Project) obtained by the Biodiversity Authorization and Information System (SISBIO, Brazil). The genetic resource access was registered under SisGen Cadastro no ADD1BBD.

Data Availability

The following information was supplied regarding data availability:

The raw data on identification and storage of the studied specimens is available in the Supplementary File.

REFERENCES

- Abba AM, Cassini GH, Valverde G, Tilak M-K, Vizcaíno SF, Superina M, Delsuc F. 2015.** Systematics of hairy armadillos and the taxonomic status of the Andean hairy armadillo (*Chaetophractus nationi*). *Journal of Mammalogy* **96**:673–689 DOI [10.1093/jmammal/gyv082](https://doi.org/10.1093/jmammal/gyv082).
- Acién P, Acién M, Sánchez-Ferrer ML. 2009.** Müllerian anomalies without a classification: from the didelphys-unicollis uterus to the bicervical uterus with or without separate vagina. *Fertility and Sterility* **91**:2369–2375 DOI [10.1016/j.fertnstert.2008.01.079](https://doi.org/10.1016/j.fertnstert.2008.01.079).
- Aguiar JM, Fonseca GD. 2008.** Conservation status of the Xenarthra. In: Vizcaino SF, Loughry WJ, eds. *The biology of the Xenarthra*. Gainesville: University Press of Florida, 215–231.
- Aguiar RF, Superina M. 2015.** Xenarthra. In: Miller RE, Fowler ME, eds. *Fowler's zoo and wild animal medicine*. St. Louis, Missouri: Elsevier Saunders, 355–369.

- Albrecht KH, Eicher EM. 2001.** Evidence that Sry is expressed in pre-Sertoli cells and Sertoli and granulosa cells have a common precursor. *Developmental Biology* 240:92–107 DOI 10.1006/dbio.2001.0438.
- Alcalá JR, Conaway CH. 1968.** The gross and microscopic anatomy of the uterus masculinus of tree shrews. *Folia Primatologica* 9 DOI 10.1159/000155181.
- Atilola MAO, Pennock PW. 1986.** Cystic uterus masculinus in the dog: six case history reports. *Veterinary Radiology* 27:8–14 DOI 10.1111/j.1740-8261.1986.tb00612.x.
- Barragán-Ruiz CE, Paviotti-Fischer E, Rodríguez-Castro KG, Desbiez ALJ, Galetti Jr PM. 2021.** Molecular sexing of Xenarthra: a tool for genetic and ecological studies. *Conservation Genetics Resources* 13:41–45 DOI 10.1007/s12686-020-01168-2.
- Barretto MLM, AL Amorim MJA, Falcão MVD. 2013.** Análise morfológica e morfométrica das gônadas de preguiça (*Bradypus variegatus* Schinz, 1825). *Pesquisa Veterinária Brasileira* 33:1130–1136 DOI 10.1590/S0100-736X2013000900014.
- Barrionuevo FJ, Zurita F, Burgos M, Jiménez R. 2004.** Testis-like development of gonads in female moles. New insights on mammalian gonad organogenesis. *Developmental Biology* 268:39–52 DOI 10.1016/j.ydbio.2003.11.025.
- Bartmann CP, Beyer C, Wißdorf H. 1991.** Topographie der Beckenhöhlenorgane sowie Befunde zur Makroskopie und Histologie der Geschlechtsorgans eines männlichen Großen Ameisenbären (*Myrmecophaga tridactyla*) im Hinblick auf seine Fertilität. *Berliner Und Münchender Tierärztliche Wochenschrift* 104:41–46.
- Blackwell WJ, McElin TW. 1955.** Vaginal cysts of mesonephric duct origin (gartner's duct cysts). *Quarterly Bulletin of Northwestern University Medical School* 29:94–97.
- Cardoso FM, Figueiredo EL, Godinho HP, Cóser AML. 1985.** Variação sazonal da atividade secretória das glândulas genitais acessórias masculinas de tatus *Dasypus novemcinctus* Linnaeus, 1758. *Revista Brasileira de Biologia* 45:507–514.
- Cetica PD, Aldana Marcos HJ, Merani MS. 2005.** Morphology of female genital tracts in Dasypodidae (Xenarthra, Mammalia): a comparative survey. *Zoomorphology* 124:57–65 DOI 10.1007/s00435-005-0111-5.
- Chai S, Tian R, Bi J, Xu S, Yang G, Ren W. 2021.** Rapid evolution and molecular convergence in cryptorchidism-related genes associated with inherently undescended testes in mammals. *BMC Ecology and Evolution* 21:22 DOI 10.1186/s12862-021-01753-5.
- Conaway CH. 1958.** The uterus masculinus of castor canadensis. *Journal of Mammalogy* 39:97–108 DOI 10.2307/1376615.
- Conley A, Place NJ, Legacki EL, Hammond GL, Cunha GR, Drea CM, Weldele ML, Glickman SE. 2020.** Spotted hyaenas and the sexual spectrum: reproductive endocrinology and development. *Journal of Endocrinology* 247:27–44 DOI 10.1530/JOE-20-0252.
- Copeland LJ, Sneige N, Gershenson DM, McGuffee VB, Abdul-Karim F, Rutledge FN. 1986.** Bartholin gland carcinoma. *Obstetrics and Gynecology* 67:794–801 DOI 10.1097/00006250-198606000-00009.
- Delsuc F, Scally M, Madsen O, Stanhope MJ, De Jong WW, Catzeflis FM, Springer MS, Douzery EJP. 2002.** Molecular phylogeny of living xenarthrans and the impact of

- character and taxon sampling on the placental tree rooting. *Molecular Biology and Evolution* **19**:1656–1671 DOI [10.1093/oxfordjournals.molbev.a003989](https://doi.org/10.1093/oxfordjournals.molbev.a003989).
- Doboszynska T, Zurowski W. 1981.** Anatomical studies of the male genital organs of the European beaver. *Acta Theriologica* **26**:331–340 DOI [10.4098/AT.arch.81-27](https://doi.org/10.4098/AT.arch.81-27).
- Dodson MK, Cliby WA, Keeney GL, Peterson MF, Podratz KC. 1994.** Skene's gland adenocarcinoma with increased serum level of prostate-specific antigen. *Gynecologic Oncology* **55**:304–307 DOI [10.1006/gyno.1994.1294](https://doi.org/10.1006/gyno.1994.1294).
- Drake RL, Vogl AW, Mitchell AWM. 2008.** Pelvis and perineum. In: *Pocket atlas of anatomy*. Philadelphia: Churchill Livingstone Elsevier, 168–225.
- Dyche WJ. 1979.** A comparative study of the differentiation and involution of the mullerian duct and wolffian duct in the male and female fetal mouse. *Journal of Morphology* **162**:175–210 DOI [10.1002/jmor.1051620203](https://doi.org/10.1002/jmor.1051620203).
- Dyce KM, Sack WO, Wensing CJG. 2010.** The urogenital apparatus. In: *Textbook of veterinary anatomy*. St. Louis, Missouri: Saunders, Elsevier, 167–215.
- Edwards TM, Moore BC, Guillette Jr LJ. 2006.** Reproductive dysgenesis in wildlife: a comparative view. *International Journal of Andrology* **29**:109–121 DOI [10.1111/j.1365-2605.2005.00631](https://doi.org/10.1111/j.1365-2605.2005.00631).
- Enders AC. 1960.** A histological study of the cortex of the ovary of the adult armadillo, with special reference to the question of neoformation of oocytes. *The Anatomical Record* **136**:491–499 DOI [10.1002/ar.1091360408](https://doi.org/10.1002/ar.1091360408).
- Favoretto SM, daSilva EG, Menezes J, Guerra RR, Campos DB. 2015.** Reproductive system of brown-throated sloth (*Bradypus variegatus*, Schinz 1825, Pilosa, Xenarthra): anatomy and histology. *Anatomia, Histologia, Embryologia* **45**:249–259 DOI [10.1111/ahc.12193](https://doi.org/10.1111/ahc.12193).
- Feijó A, Vilela JF, Cheng J, Schetino MAA, Coimbra RTF, Bonvicino CR, Santos FR, Patterson BD, Cordeiro-Estrela P. 2019.** Phylogeny and molecular species delimitation of long-nosed armadillos (*Dasypus*: Cingulata) supports morphology-based taxonomy. *Zoological Journal of the Linnean Society* **186**:813–825 DOI [10.1093/zoolinnean/zly091](https://doi.org/10.1093/zoolinnean/zly091).
- Gardiner JR, Swain A. 2014.** Sex determination and differentiation. In: Plant TM, Zeleznik AJ, eds. *Knobil and Neill's physiology of reproduction*. London: Elsevier, 278–279.
- Gardner AL. 2008.** Magnorder Xenarthra. In: Gardner AL, ed. *Mammals of South America, Volume 1: Marsupials, Xenarthrans, Shrews, and Bats*. Chicago and London: University of Chicago Press, 127–176.
- Gaudin TJ, Croft DA. 2015.** Paleogene Xenarthra and the evolution of South American mammals. *Journal of Mammalogy* **96**:622–634 DOI [10.1093/jmammal/gyv073](https://doi.org/10.1093/jmammal/gyv073).
- Glickman SE, Frank LG, Pavgi S, Licht P. 1992.** Hormonal correlates of masculinization in female spotted hyaenas (*Crocuta crocuta*). 1. Infancy to sexual maturity. *Journals of Reproduction and Fertility Ltd* **95**:451–462 DOI [10.1530/jrf.0.0950451](https://doi.org/10.1530/jrf.0.0950451).
- Glover TD. 1963.** Accessory sex structures in the male nine-banded armadillo (*Dasypus novemcinctus*). *Journal of Anatomy* **97**:474–475.

- Grassé PP. 1955.** Ordre des édentés. In: *Traité de zoologie*. Paris: Masson et Cie, 1182–1246.
- Hannema SE, Hughes IA. 2007.** Regulation of Wolffian duct development. *Hormone Research* **67**:142–151 DOI [10.1159/000096644](https://doi.org/10.1159/000096644).
- Hayssen V, Orr TJ (eds.) 2017.** The reproductive tract: from the ovaries to the outside. In: *Reproduction in mammals: the female perspective*. Baltimore: Johns Hopkins University Press, 53–58.
- Holt WV, Pickard AR, Rodger JC, Wildt DE (eds.) 2003.** *Reproductive science and integrated conservation*. Cambridge: Cambridge University Press.
- IUCN. 2020.** The IUCN red list of threatened species. Version 2020-3. Available at <https://www.iucnredlist.org>.
- Jiménez R, Burgos M, Sánchez A, Sinclair AH, Alarcón FJ, Marín JJ, Ortega E, Díaz de la Guardia R. 1993.** Fertile females of the mole *Talpa occidentalis* are phenotypic intersexes with ovotestes. *Development* **118**:1303–1311 DOI [10.1242/dev.118.4.1303](https://doi.org/10.1242/dev.118.4.1303).
- Josso N, Belville C, Di Clemente N, Picard J-Y. 2005.** AMH and AMH receptor defects in persistent Müllerian duct syndrome. *Human Reproduction Update* **11**:351–356 DOI [10.1093/humupd/dmi014](https://doi.org/10.1093/humupd/dmi014).
- Kanai Y, Hiramatsu R, Matoba S, Kidokoro T. 2005.** From SRY to SOX9: mammalian testis differentiation. *The Journal of Biochemistry* **138**:13–19 DOI [10.1093/jb/mvi098](https://doi.org/10.1093/jb/mvi098).
- Kato H, Komiyama I, Maejima T, Nishizawa O. 2002.** Histopathological study of the müllerian duct remnant: clarification of disease categories and terminology. *Journal of Urology* **167**:133–136 DOI [10.1016/S0022-5347\(05\)65398-0](https://doi.org/10.1016/S0022-5347(05)65398-0).
- Kaudern W. 1914.** Studien über die männlichen Geschlechtsorgane von Edentaten. *Arkiv För Zoologi* **9**:1–53.
- Kleisner K, Ivell R, Flegr J. 2010.** The evolutionary history of testicular externalization and the origin of the scrotum. *Journal of Biosciences* **35**:27–37 DOI [10.1007/s12038-010-0005-7](https://doi.org/10.1007/s12038-010-0005-7).
- Kobayashi A, Behringer RR. 2003.** Developmental genetics of the female reproductive tract in mammals. *Nature Reviews Genetics* **4**:969–980 DOI [10.1038/nrg1225](https://doi.org/10.1038/nrg1225).
- König HE, Liebich H-G. 2014.** Male genital organs (organa genitalia masculina). In: König HE, Liebich H-G, eds. *Veterinary anatomy of domestic mammals: textbook and colour atlas*. Stuttgart: Schattauer, 413–428.
- König HE, Plendl J, Liebich H-G, König HE, Liebich H-G. 2014.** Female genital organs (organa genitalia feminina). In: *Veterinary anatomy of domestic mammals: textbook and colour atlas*. Stuttgart: Schattauer, 429–450.
- Liebich H-G. 2010.** Weibliche Geschlechtsorgane (Organa genitalia feminina). In: *Funktionelle Histologie der Haussäugetiere und Vögel*. Stuttgart: Schattauer, 321–341.
- Lindeque M, Skinner JD. 1982.** Fetal androgens and sexual mimicry in spotted hyaenas (*Crocuta crocuta*). *Journals of Reproduction and Fertility Ltd* **65**:405–410 DOI [10.1530/jrf.0.0650405](https://doi.org/10.1530/jrf.0.0650405).
- Lovegrove BG. 2014.** Cool sperm: why some placental mammals have a scrotum. *Journal of Evolutionary Biology* **27**:801–814 DOI [10.1111/jeb.12373](https://doi.org/10.1111/jeb.12373).

- Lyle SK. 2007. Disorders of sexual development in the dog and cat. *Theriogenology* 68:338–343 DOI 10.1016/j.theriogenology.2007.04.015.
- Mackay S. 2000. Gonadal development in mammals at the cellular and molecular levels. *International Review of Cytology* 200:47–99 DOI 10.1016/S0074-7696(00)00002-4.
- MacLaughlin DT, Teixeira J, Donahoe PK. 2001. Perspective: reproductive tract development - New discoveries and future directions. *Endocrinology* 142:2167–2172 DOI 10.1210/endo.142.6.8262.
- Marker PC, Donjacour AA, Dahiya R, Cunha GR. 2003. Hormonal, cellular, and molecular control of prostatic development. *Developmental Biology* 253:165–174 DOI 10.1016/S0012-1606(02)00031-3.
- McBee K, Baker RJ. 1982. *Dasybus novemcinctus*. *Mammalian Species* 1–9 DOI 10.2307/3503864.
- McDonald G, Vizcaíno SF, Bargo MS. 2008. Skeletal anatomy and the fossil history of the Vermilingua. In: Vizcaíno SF, Loughry WJ, eds. *The biology of Xenarthra*. Gainesville: University Press of Florida, 64–78.
- Meyers-Wallen VN. 2012. Gonadal and sex differentiation abnormalities of dogs and cats. *Sexual Development* 6:46–60 DOI 10.1159/000332740.
- Miranda F, Bertassoni A, Abba AM. 2014. *Myrmecophaga tridactyla*. The IUCN Red List of Threatened Species.
- Miranda FR, Casali DM, Perini FA, Machado FA, Santos FR. 2017. Taxonomic review of the genus *Cyclopes* Gray, 1821 (Xenarthra: Pilosa), with the revalidation and description of new species. *Zoological Journal of the Linnean Society* 183:678–721 DOI 10.1093/zoolinnean/zlx079.
- Morris P. 1972. A review of mammalian age determination methods. *Mammal Review* 2:69–104 DOI 10.1111/j.1365-2907.1972.tb00160.x.
- Neaves WB, Griffin JE, Wilson JD. 1980. Sexual dimorphism of the phallus in spotted hyaena (*Crocuta crocuta*). *Reproduction* 59:509–513 DOI 10.1530/jrf.0.0590509.
- Newfang DM. 1947. Sex differentiation in the nine-banded armadillo, *Dasybus novemcinctus*. *Journal of Morphology* 81:283–315 DOI 10.1002/jmor.1050810302.
- Novacek MJ. 1992. Mammalian phylogeny: shaking the tree. *Nature* 356:121–125 DOI 10.1038/356121a0.
- Ohnesorg T, Vilain E, Sinclair AH. 2014. The genetics of disorders of sex development in humans. *Sexual Development* 8:262–272 DOI 10.1159/000357956.
- Omole F, Simmons BJ, Hacker Y. 2003. Management of bartholin's duct cyst and gland abscess. *American Family Physician* 68:135–140.
- Owen R. 1868. Anatomy of edentates. In: *The anatomy of vertebrates*. London: Longmans, Green, and Co, 641–708.
- Panasiewicz G, Zamojska A, Bieniek M, Gizejewski Z, Szafranska B. 2015. Persistent Müllerian duct syndrome (PMDS) in the Polish free-ranged bull populations of the European bison (*Bison bonasus* L.). *Animal Reproduction Science* 152:123–136 DOI 10.1016/j.anireprosci.2014.11.012.

- Picard J-Y, Cate RL, Racine C, Josso N. 2017.** The persistent müllerian duct syndrome: an update based upon a personal experience of 157 cases. *Sexual Development* 11:109–125 DOI [10.1159/000475516](https://doi.org/10.1159/000475516).
- Portaria MMA No. 444/2014. 2014.** *Lista oficial de espécies da fauna ameaçada de extinção*. Brasília: Ministério do Meio Ambiente.
- Rapp von W. 1852.** *Anatomische Untersuchungen über die Edentaten*. Tübingen: L. F. Fues DOI [10.5962/bhl.title.82522](https://doi.org/10.5962/bhl.title.82522).
- Ritchey ML, Benson RC, Kramer SA, Kelalis PP. 1988.** Management of müllerian duct remnants in the male patient. *Journal of Urology* 140:795–799 DOI [10.1016/S0022-5347\(17\)41816-7](https://doi.org/10.1016/S0022-5347(17)41816-7).
- Rodrigues FHG, Medri ÍM, Miranda GHB, Camilo-Alves C, Mourão G. 2008.** Anteater behaviour and ecology. In: Vizcaíno SF, Loughry WJ, eds. *The biology of xenarthra*. Gainesville: University Press of Florida, 257–268.
- Rossi LF, Luaces JP, Aldana Marcos HJ, Cetica PD, Gachen G, Pérez Jimeno G, Merani MS. 2011.** Female reproductive tract of the lesser anteater (*Tamandua tetradactyla*, Myrmecophagidae, Xenarthra). Anatomy and histology. *Journal of Morphology* 272:1307–1313 DOI [10.1002/jmor.10983](https://doi.org/10.1002/jmor.10983).
- Rossi LF, Luaces JP, Aldana Marcos HJ, Cetica PD, Perez Jimeno G, Merani MS. 2012.** Anatomy and histology of the male reproductive tract and spermatogenesis fine structure in the lesser anteater (*Tamandua tetradactyla*, Myrmecophagidae, Xenarthra): morphological evidences of reproductive functions. *Anatomia, Histologia, Embryologia* 42:247–256 DOI [10.1111/ahc.12008](https://doi.org/10.1111/ahc.12008).
- Santos FCA, Taboga SR. 2006.** Female prostate: a review about the biological repercussions of this gland in humans and rodents. *Animal Reproduction* 3:3–18.
- Schauerte N, Osmann C. 2012.** Reprodução De Tamanduás em Cativeiro. In: *Manutenção De Tamanduás em Cativeiro*. São Carlos: Editora Cubo, 134–145.
- Setchell BP. 2006.** The effects of heat on the testes of mammals. *Animal Reproduction* 3:81–91.
- Sharma V, Lehmann T, Stuckas H, Funke L, Hiller M. 2018.** Loss of RXFP2 and INSL3 genes in Afrotheria shows that testicular descent is the ancestral condition in placental mammals. *PLOS Biology* 16:1–22 DOI [10.1371/journal.pbio.2005293](https://doi.org/10.1371/journal.pbio.2005293).
- She Z-Y, Yang W-X. 2016.** Sry and SoxE genes: how they participate in mammalian sex determination and gonadal development? *Seminars in Cell & Developmental Biology* 63:13–22 DOI [10.1016/j.semcdb.2016.07.032](https://doi.org/10.1016/j.semcdb.2016.07.032).
- Stévant I, Papaioannou MD, Nef S. 2018.** A brief history of sex determination. *Molecular and Cellular Endocrinology* 468:3–10 DOI [10.1016/j.mce.2018.04.004](https://doi.org/10.1016/j.mce.2018.04.004).
- Superina M, Loughry WJ. 2015.** Why do Xenarthrans matter? *Journal of Mammalogy* 96:617–621 DOI [10.1093/jmammal/gyv099](https://doi.org/10.1093/jmammal/gyv099).
- Superina M, Miranda FR, Abba AM. 2010.** The 2010 anteater red list assessment. *Edentata* 12:96–114 DOI [10.5537/020.011.0201](https://doi.org/10.5537/020.011.0201).
- Swoboda A. 1929.** Beitrag zur Kenntnis des Utriculus masculinus der Haustiere. *Zeitschrift Für Anatomie Und Entwicklungsgeschichte* 89:494–512 DOI [10.1007/BF02117632](https://doi.org/10.1007/BF02117632).

- Takami K, Yoshida M, Yoshida Y, Kojima Y. 1998.** Sex determination in giant anteater (*Myrmecophaga tridactyla*) using hair roots by polymerase chain reaction amplification. *Journal of Reproduction and Development* **44**:73–78 DOI [10.1262/jrd.44.73](https://doi.org/10.1262/jrd.44.73).
- Vegter AR, Kooistra HS, Van Sluijs FJ, Van Bruggen LWL, Ijzer J, Zijlstra C, Okkens AC. 2010.** Persistent mullerian duct syndrome in a miniature schnauzer dog with signs of feminization and a sertoli cell tumour. *Reproduction in Domestic Animals* **45**:447–452 DOI [10.1111/j.1439-0531.2008.01223.x](https://doi.org/10.1111/j.1439-0531.2008.01223.x).
- Vignoli M, De Amicis I, Tamburro R, Quaglione G, Salviato N, Collivignarelli F, Terragni R, Pastrolin S, Marruchella G. 2020.** A case of adenocarcinoma of uterus masculinus in a Pomeranian dog. *Frontiers in Veterinary Science* **7** DOI [10.3389/fvets.2020.00337](https://doi.org/10.3389/fvets.2020.00337).
- Vizcaíno SF, Bargo MS. 2014.** Loss of ancient diversity of Xenarthrans and the value of protecting extant armadillos, sloths and anteaters. *Edentata* **15**:27–38 DOI [10.5537/020.015.0111](https://doi.org/10.5537/020.015.0111).
- Welsh M, Sharpe RM, Walker M, Smith LB, Saunders PTK. 2009.** New insights into the role of androgens in Wolffian duct stabilization in male and female rodents. *Endocrinology* **150**:2472–2480 DOI [10.1210/en.2008-0529](https://doi.org/10.1210/en.2008-0529).
- Welsh M, Suzuki H, Yamada G. 2014.** The masculinization programming window. In: Hiort O, Ahmed SF, eds. *Understanding differences and disorders of sex development (DSD)*. Basel: Endocrine Development, Karger, 17–27.
- Werdelin L, Nilsson Å. 1999.** The evolution of the scrotum and testicular descent in mammals: a phylogenetic view. *Journal of Theoretical Biology* **196**:61–72 DOI [10.1006/jtbi.1998.0821](https://doi.org/10.1006/jtbi.1998.0821).
- Wildt DE, Comizzoli P, Pukazhenthii B, Songsasen N. 2010.** Lessons from biodiversity - The value of nontraditional species to advance reproductive science, conservation, and human health. *Molecular Reproduction and Development* **77**:397–409 DOI [10.1002/mrd.21137](https://doi.org/10.1002/mrd.21137).
- Wislocki GB. 1928.** Observations on the gross and microscopic anatomy of the sloths (*Bradypus griseus griseus* Gray and *Choloepus hoffmanni* Peters). *Journal of Morphology and Physiology* **46**:317–397 DOI [10.1002/jmor.1050460202](https://doi.org/10.1002/jmor.1050460202).
- Wu X, Wan S, Pujar S, Haskins ME, Schlafer DH, Lee MM, Meyers-Wallen VN. 2009.** A single base pair mutation encoding a premature stop codon in the mis type II receptor is responsible for canine persistent Müllerian duct syndrome. *Journal of Andrology* **30**:46–56 DOI [10.2164/jandrol.108.005736](https://doi.org/10.2164/jandrol.108.005736).
- Zaviacic M, Jakubovská V, Belosovic M, Breza J. 2000.** Ultrastructure of the normal adult human female prostate gland (Skene's gland). *Anatomy and Embryology* **201**:51–61 DOI [10.1007/pl00022920](https://doi.org/10.1007/pl00022920).
- Zurita F, Barrionuevo FJ, Berta P, Ortega E, Burgos M, Jiménez R. 2003.** Abnormal sex-duct development in female moles: the role of anti-Müllerian hormone and testosterone. *International Journal of Developmental Biology* **47**:451–458.