

RESEARCH

Open Access

# Clinical outcome and predictors of survival and pneumonitis after stereotactic ablative radiotherapy for stage I non-small cell lung cancer

Joe Y Chang<sup>1\*</sup>, Hui Liu<sup>1</sup>, Peter Balter<sup>2</sup>, Ritsuko Komaki<sup>1</sup>, Zhongxing Liao<sup>1</sup>, James Welsh<sup>1</sup>, Reza J Mehran<sup>3</sup>, Jack A Roth<sup>3</sup> and Stephen G Swisher<sup>3</sup>

## Abstract

**Background:** Stereotactic ablative radiotherapy (SABR) can achieve excellent local control rates in early-stage non-small cell lung cancer (NSCLC) and has emerged as a standard treatment option for patients who cannot undergo surgery or those with isolated recurrences. However, factors that may predict toxicity or survival are largely unknown. We sought here to identify predictors of survival and pneumonitis after SABR for NSCLC in a relatively large single-institution series.

**Methods:** Subjects were 130 patients with stage I NSCLC treated with four-dimensional computed tomography (4D CT) –planned, on-board volumetric image–guided SABR to 50 Gy in 4 fractions. Disease was staged by positron emission tomography/computed tomography (PET/CT) and scans were obtained again at the second follow-up after SABR.

**Results:** At a median follow-up time of 26 months, the 2-year local control rate was 98.5%. The median overall survival (OS) time was 60 months, and OS rates were 93.0% at 1 year, 78.2% at 2 years, and 65.3% at 3 years. No patient experienced grade 4–5 toxicity; 15 had radiation pneumonitis (12 [9.3%] grade 2 and 3 [2.3%] grade 3). Performance status, standardized uptake value (SUV)<sub>max</sub> on staging PET/CT, tumor histology, and disease operability were associated with OS on univariate analysis, but only staging SUV<sub>max</sub> was independently predictive on multivariate analysis ( $P=0.034$ ). Dosimetric factors were associated with radiation pneumonitis on univariate analysis, but only mean ipsilateral lung dose  $\geq 9.14$  Gy was significant on multivariate analysis ( $P=0.005$ ).

**Conclusions:** OS and radiation pneumonitis after SABR for stage I NSCLC can be predicted by staging PET SUV<sub>max</sub> and ipsilateral mean lung dose, respectively.

**Keywords:** Stereotactic body radiotherapy, Stereotactic ablative radiotherapy, Non-small cell lung cancer, F-fluorodeoxyglucose positron emission tomography, Toxicity, Predictive factors

\* Correspondence: [jychang@mdanderson.org](mailto:jychang@mdanderson.org)

<sup>1</sup>Departments of Radiation Oncology, The University of Texas MD Anderson Cancer Center, 1515 Holcombe Blvd., Houston, TX, USA

Full list of author information is available at the end of the article

## Background

Lung cancer is the leading cause of cancer death throughout the world and accounts for 28% of all cancer deaths in the United States [1]. Approximately 15%–20% of patients with non-small cell lung cancer (NSCLC) present with early or localized disease that could be treated surgically [2,3]. Stereotactic ablative radiotherapy (SABR), also known as stereotactic body radiotherapy (SBRT), can achieve local control rates exceeding 90% as well as promising survival rates in such cases when a biologically effective dose (BED) of more than 100 Gy is delivered to the planning target volume (PTV) [3-11]. SABR has emerged as a standard treatment option for stage I disease in patients who cannot undergo surgery for medical reasons [3-7] and for isolated recurrences of NSCLC [6,12,13]. However, the information about factors that may predict survival and pneumonitis after SABR is limited because of the heterogeneity of the patients and dose regimens [13-19].

In this report, we reported clinical outcome and used long-term follow-up data to identify potentially predictive factors for survival and pneumonitis among 130 patients with stage I NSCLC treated with SABR to 50 Gy delivered in 4 fractions over 4 consecutive days (BED 112.5 Gy).

## Methods

### Study design

We retrospectively analyzed 130 patients who had been prospectively enrolled in either a phase II clinical protocol on image-guided SABR ( $n = 46$ ) or in our SABR program ( $n = 84$ ) according to the same protocol guidelines at The University of Texas MD Anderson Cancer Center between February 2005 and December 2009. Reasons for not being enrolled in the phase II protocol included patient or insurance refusal, not having had the required brain magnetic resonance imaging (MRI) or computed tomography (CT), or not having signed the protocol-specific informed consent forms within the required time. All patients provided written informed consent to participate. Eligibility criteria included cytologically or biopsy-proven stage I NSCLC ( $T < 5$  cm,  $N_0$ ,  $M_0$ ) and inability or lack of desire to undergo surgery. Criteria for medical inoperability were having a baseline forced expiratory volume in 1 second (FEV1) or lung diffusion capacity  $< 40\%$  of predicted values or severe diabetes mellitus, cardiovascular disease, cerebral disease, or pulmonary hypertension. Thirty-four patients whose disease was considered borderline operable by thoracic surgeons had declined surgery. Disease in all patients was staged with chest CT and positron emission tomography (PET)/CT (Discovery ST; GE Healthcare, Milwaukee, WI) within 3 months before SABR and follow ups. The PET/CT scan condition was described previously (26). Lesions

within 2 cm of the bronchial tree or mediastinal structures were considered central; all others were considered peripheral.

### Treatment planning

Techniques for patient immobilization and treatment planning are described elsewhere [6,12]. Briefly, patients were immobilized while supine with a customized vacuum immobilization bag extending from the head to the pelvis. Four-dimensional (4D) CT images were obtained in all cases. Gross tumor volumes (GTVs) were delineated by using maximum intensity projection of 4D CT and modified by visual verification at different breathing phases. The path of movement of the GTV during the respiratory cycle was the internal gross tumor volume (iGTV) [20]. The clinical target volume (CTV) was created by expanding the iGTV by 8 mm isotropically, with borders edited clinically. A 3-mm margin was added to CTV to account for set-up errors, thereby creating the PTV. No additional margins were used between the PTV and the block edge. Three-dimensional conformal SABR plans were optimized using 6 to 12 coplanar or non-coplanar 6-MV photon beams. SABR was prescribed to a dose of 50 Gy to the PTV between the 75% and 90% isodose lines, which had been created via Pinnacle calculation algorithms with heterogeneity correction, and delivered in 4 fractions over 4 consecutive days. Typically, the lower prescription isodose line was chosen when the proximity of critical normal structures mandated a compromise to the PTV, and therefore a higher dose to the tumor center and sharper dose gradients were required. Normal tissue dose-volume constraints were based on BED calculations and our previous clinical findings of the toxicity of SABR [6,12,21] and are shown in Table 1. Violations to the constraints for the spinal cord, esophagus, and brachial plexus were not allowed; constraints on other normal tissues were judged on the basis of clinical target coverage. Typically, when the tumor was close to a critical structure, a compromise in PTV coverage was considered acceptable. In any situation, however, the iGTV plus a margin of 5 mm was required to receive at least 95% of the prescribed dose. Patients with lesions very close/ abutting to critical structures and whose normal tissue dose volume constraints can't be achieved were treated with different dose regimens. Day-to-day variations in patient placement were minimized by volumetric imaging of the treatment couch with either a CT-on-rails or a cone-beam CT system.

### Follow-up

Follow-up care consisted of CT imaging and clinical examination every 3 months for the first 2 years after SABR, every 6 months for the third year, and annually

**Table 1 Critical organ dose-volume limits for stereotactic ablative radiotherapy to 50 Gy given in 4 fractions**

Organ, Limit, and Volume	Maximum dose limits
Esophagus	
D <sub>max</sub>	35 Gy
≤ 1 cm <sup>3</sup>	30 Gy
≤ 5 cm <sup>3</sup>	20 Gy
Brachial plexus	
D <sub>max</sub>	40 Gy
≤ 1 cm <sup>3</sup>	35 Gy
≤ 5 cm <sup>3</sup>	30 Gy
Trachea	
D <sub>max</sub>	45 Gy
≤ 1 cm <sup>3</sup>	35 Gy
≤ 5 cm <sup>3</sup>	30 Gy
Main bronchus and bronchial tree	
≤ 1 cm <sup>3</sup>	40 Gy
≤ 5 cm <sup>3</sup>	35 Gy
Heart	
≤ 1 cm <sup>3</sup>	40 Gy
≤ 5 cm <sup>3</sup>	35 Gy
Total lung volume*	
V <sub>20 Gy(RBE)</sub>	< 20% of total lung volume
V <sub>10 Gy(RBE)</sub>	< 30% of total lung volume
V <sub>5 Gy(RBE)</sub>	< 40% of total lung volume
Major vessels	
D <sub>max</sub>	45 Gy
≤ 1 cm <sup>3</sup>	40 Gy
≤ 5 cm <sup>3</sup>	35 Gy
Skin	
≤ 1 cm <sup>3</sup>	35 Gy
≤ 5 cm <sup>3</sup>	30 Gy
Chest wall	
≤ 10 cm <sup>3</sup>	45 Gy
≤ 30 cm <sup>3</sup>	35 Gy
Spinal cord	
D <sub>max</sub>	25 Gy
≤ 5 cm <sup>3</sup>	20 Gy

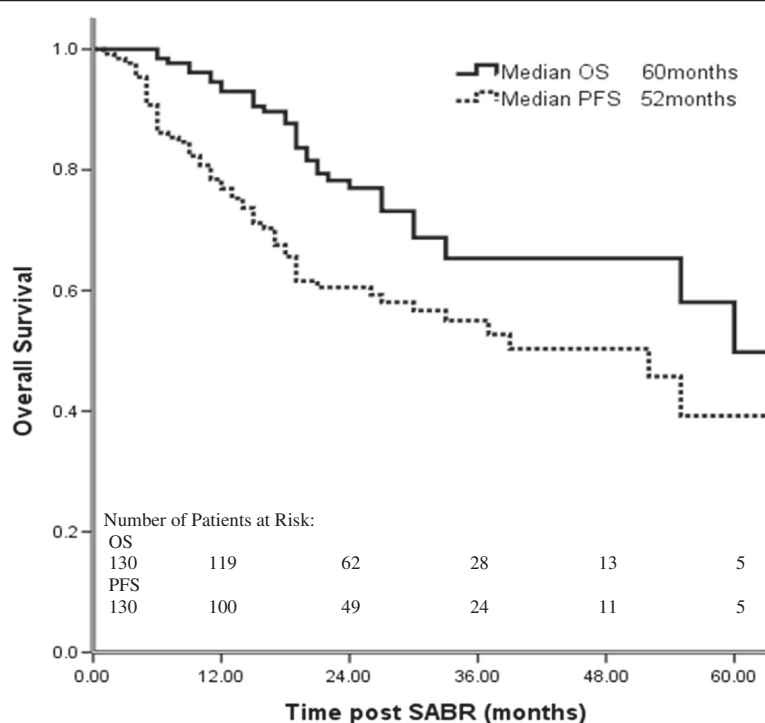
\*Defined as right plus left lungs minus the gross tumor volume.

thereafter. All patients underwent posttreatment fluoro-deoxyglucose (FDG) PET scans at MD Anderson for disease staging and at the first or second follow-up visit (median interval 4.3 months, range 2–7.6 months; the wide range reflected unexpectedly interrupted follow-up) and as clinically indicated thereafter. Rates and times of overall survival (OS), progression-free survival (PFS), local failure-free survival (LFFS), distant metastasis-free

**Table 2 Patient characteristics (n = 130)**

Characteristic	Value or No. of patients (%)
Age, years	
Median	74
Range	48–91
FEV1, % of predicted	
Median	42
Range	15–123
Staging PET SUV <sub>max</sub>	
Median	6.20
Range	0.5–32.6
Gross tumor volume, cm <sup>3</sup>	
Median	9.6
Range	0.7–51.47
Planning target volume, cm <sup>3</sup>	
Median	73.2
Range	23.36–109.64
Sex	
Men	67 (51.5)
Women	63 (48.5)
COPD stage	
0-II	73 (56)
III-IV	57 (44)
History of other types of cancer	
Yes	37 (28.5)
No	93 (71.5)
ECOG performance status	
0 or 1	81 (62)
2 or 3	49 (38)
Lung cancer stage	
IA (T1)	112 (86)
IB (T2)	18 (14)
Lung cancer histology	
Squamous cell carcinoma	36 (28)
Adenocarcinoma	58 (45)
NSCLC not specified	36 (28)
Disease status	
Medically inoperable	96 (74)
Operable	34 (26)
Tumor location	
Peripheral	119 (91.5)
Central	11 (8.5)

Abbreviations: FEV1, forced expiratory volume in 1 second; PET, positron emission tography; SUV<sub>max</sub>, maximum standardized uptake value; COPD, chronic obstructive pulmonary disease; ECOG, Eastern Cooperative Oncology Group; NSCLC, non-small cell lung cancer;



**Figure 1** Overall survival (OS) and progression-free survival (PFS) for 130 patients treated with stereotactic ablative radiotherapy (SABR) for stage I NSCLC.

survival (DMFS), local failure, regional failure, and distant metastasis were calculated from the date of completion of SABR to the last available follow-up. The time of recurrence was the time at which the first image (PET/CT or CT) showed abnormalities. Local failure was defined as progressive abnormalities on CT images corresponding to one or more FDG-avid lesions on PET scans; positive biopsy findings within the PTV plus a 1-cm margin; or lesions that appeared in the same lobe after SABR. Recurrence appearing in different lobes was scored as distant metastasis. Regional failure was defined as intrathoracic lymph node relapse outside the PTV. Toxicities, including RP, were scored according to the National Cancer Institute Common Terminology Criteria for Adverse Events v3.0.

#### Statistical analyses

Data were analyzed with SAS (SAS Institute, Cary, NC) statistical software, version 9.2. To analyze predictive factors for OS, PFS, LFFS, and DMFS after SABR, continuous variables such as age, FEV1, maximum standardized uptake value ( $SUV_{max}$ ) on staging PET scans, and GTV were discretely divided at the sample median and then analyzed as nominal categorical variables. We used the Kaplan-Meier method to estimate survival curves and the log-rank test to compare the curves.  $P$  values < 0.05 were considered statistically significant. Characteristics found to be significant by univariate analysis were

then entered in multivariable Cox proportional hazards regression analysis.

To analyze predictive factors for RP, continuous variables such as age, FEV1, GTV, PTV, and dosimetric data were divided at the medians and analyzed as nominal categorical variables. Total lung volume was defined as right plus left lungs minus the GTV, and ipsilateral lung was defined as the lung containing the lesion to be treated minus the GTV. Comparisons were made with two-sided Pearson's chi-square tests.  $P$  values < 0.05 were considered statistically significant. Characteristics found to be significant by univariate analysis were then entered in a stepwise multiple binary logistic regression analysis to identify independent predictive factors.

#### Results

##### Patient characteristics, survival, and patterns of failure after SABR

Characteristics of the 130 patients treated with SABR are listed in Table 2. At a median follow-up time of 26 months (range, 6–78 months), the median OS time for all patients was 60 months (55 months for patients with medically inoperable disease vs. >60 months [not reached] for those with borderline operable disease). One patient developed local failure concurrent with distant metastasis, and one patient developed isolated local failure that was salvaged surgically. At 2 years, the local control rate was 98.5%; the regional lymph node

recurrence rate was 8.5% (11/130), and the isolated regional lymph node recurrence rate was 6.9% (9/130). Thirty patients (23.1%) developed DM, making it the dominant pattern of treatment failure. Overall and progression-free survival rates for all patients are illustrated in Figure 1. OS rates were 93.0% at 1 year, 78.2% at 2 years, and 65.3% at 3 years; the corresponding PFS rates were 78.4%, 60.5%, and 55.0%. With regard to disease control, LFFS rates were 93.7% at 1 year, 88.8% at 2 years, and 88.8% at 3 years; the corresponding DMFS rates were 89.1%, 79.4%, and 73.1%.

#### Toxicity associated with SABR

No patient experienced grade 4 or 5 toxicity, even those with centrally located lesions. Chest wall pain was experienced by 12 patients (11 [8.5%] grade 2 and 1 [0.8%] grade 3), with median time to onset 8 months after SABR (range 0–27 months). Eight patients (6.2%) had grade 2 or 3 dermatitis (median onset time 2 months, range 0–10 months). Fifteen patients developed RP (12 [9.2%] grade 2 and 3 [2.3%] grade 3), with median time to onset 4 months (range 1–11 months). Only 2 patients (1.5%) developed esophagitis (both grade 1) with the esophageal dose-volume constraints used here. No definitive radiation-induced cardiovascular toxicity was noted.

#### Predictors of OS and PFS after SABR

Next we explored whether  $SUV_{max}$  or other variables could predict clinical outcomes after SABR for stage I disease. Univariate analysis revealed that staging PET  $SUV_{max}$  (dichotomized at the median 6.2,  $P=0.028$ ), Eastern Cooperative Oncology Group (ECOG) performance status ( $P=0.037$ ), tumor histology ( $P=0.043$ ), and whether the disease was considered medically operable or not ( $P=0.036$ ) were significantly associated with OS (Table 3); performance status and staging PET  $SUV_{max}$  were also associated with PFS after SABR. Multivariate Cox regression analysis showed that staging PET  $SUV_{max}$  was the only independent significant predictor of OS (hazard ratio [HR] 2.15; 95% confidence interval [CI] 1.06–4.34;  $P=0.034$ ): patients whose PET  $SUV_{max}$  at staging was less than the median 6.2 had higher rates of long-term OS than did those with staging PET  $SUV_{max} \geq 6.2$  (Figure 2,  $P=0.034$ ). No significant predictors were identified for LFFS and DMFS.

#### Risk factors for grade 2–3 RP

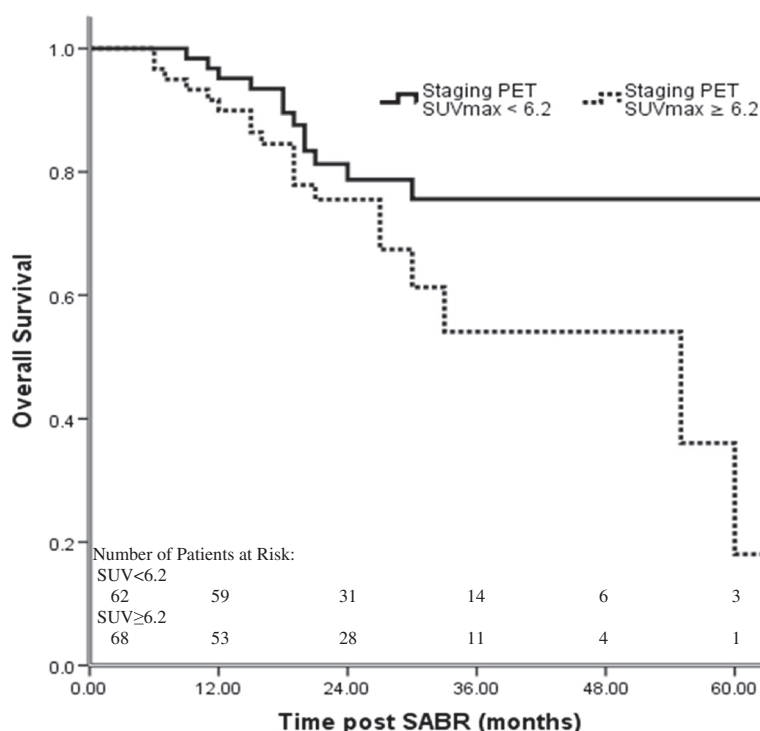
Univariate analysis of patient characteristics and dosimetric factors dichotomized at the medians (Table 4) revealed that many dosimetric variables (lung volumes receiving anywhere from 5 Gy to 40 Gy and mean lung doses [MLDs]) were associated with the incidence of grade 2–3 RP ( $P < 0.05$ ) but that other patient characteristics (e.g., FEV1, tumor location, performance status, and GTV) were not. Multivariate binary logistic regression

**Table 3 Univariate analysis of predictive factors for overall and progression-free survival**

Characteristic	Overall Survival		Progression-Free Survival	
	HR (95% CI)	P value	HR (95% CI)	P Value
Age, years				
≥ 74	1			
< 74	1.87 (0.93–3.78)	0.080	1.42 (0.83–2.44)	0.196
Sex				
Male	1			
Female	0.93 (0.48–1.82)	0.875	0.86 (0.51–1.47)	0.588
COPD stage				
0–II	1			
III–IV	0.75 (0.37–1.54)	0.413	0.66 (0.37–1.17)	0.594
History of other type of cancer				
Yes	1			
No	1.55 (0.78–3.09)	0.211	1.29 (0.74–2.24)	0.374
ECOG performance status				
0–1	1			
2–3	2.03 (1.04–3.95)	0.037	1.68 (0.99–2.85)	0.050
Lung cancer stage				
IA (T1)	1			
IB (T2)	1.28 (0.53–3.08)	0.586	1.11 (0.54–2.27)	0.776
Lung cancer histology				
Non-squamous	1			
Squamous	1.16 (1.01–1.34)	0.043	1.09 (0.97–1.22)	0.173
Staging PET $SUV_{max}$				
< 6.2	1			
≥ 6.2	2.10 (1.01–4.33)	0.028	1.81 (1.05–3.10)	0.032
Gross tumor volume, $cm^3$				
< 9.6	1			
≥ 9.6	1.55 (0.79–3.05)	0.204	1.42 (0.84–2.42)	0.195
Disease status				
Medically inoperable	1			
Operable	0.36 (0.14–0.94)	0.036	0.51 (0.26–1.02)	0.055
Tumor location				
Peripheral	1			
Central	0.97 (0.34–2.76)	0.954	0.89 (0.35–2.25)	0.809
Radiation pneumonitis				
No	1			
Yes	1.19 (0.65–2.16)	0.571	0.92 (0.43–1.94)	0.819

Abbreviations: HR, hazard ratio; CI, confidence interval; COPD, chronic obstructive pulmonary disease; ECOG, Eastern Cooperative Oncology Group; PET, positron emission tomography;  $SUV_{max}$ , maximum standardized uptake value.

analysis with stepwise selection of variables found to be significant in univariate analysis showed that only an MLD to the ipsilateral lung  $\geq 9.14$  Gy (the median value) was associated with grade 2–3 RP (odds ratio [OR] 18.86; 95%



**Figure 2** Overall survival according to maximum standardized uptake value (SUV<sub>max</sub>) on staging PET/CT scans.

CI 2.398–148.27;  $P = 0.005$ ). Interestingly, when we used Cox regression analysis to take onset time of pneumonitis into consideration, ipsilateral lung V40 become the most significant predictor for grade 2–3 RP, indicating high dose (40 Gy) may be correlated with grade 2–3 RP developed within certain time after SABR.

### Discussion

We found that SABR to a dose of 50 Gy delivered in 4 fractions (BED 112.5 Gy) produced a 2-year local control rate of 98.5%, a median OS time of 60 months, and minimal toxicity (minimal grade 3 and no grade 4 or 5). SUV<sub>max</sub> on the staging PET/CT scan was the only predictor of OS, with SUV<sub>max</sub> less than the median 6.2 being associated with better survival. The MLD to the ipsilateral lung (i.e., the lung containing the lesion to be treated, minus the GTV) was the only significant predictor of grade 2 or 3 RP. Among 130 patients, only two (<2%) experienced LF, one of which occurred simultaneously with DM. The thoracic lymph node recurrence rate of 8.5% was consistent with most reported findings [3-11], and DM remained the dominant pattern of failure. This finding, common in other studies as well [3-7,9], underscores the need for novel systemic treatments to reduce the incidence of distant failure. Molecular markers may also be helpful for identifying patients who may benefit from adjuvant chemotherapy.

Having other predictive tools in addition to traditional factors such as age, disease stage, performance status, tumor histology, and comorbidities to predict outcome before therapy is begun would be valuable both for the choice of initial treatment and for identifying which patients might benefit from additional systemic therapy. Several surgical series [22-25] showed that pretreatment SUV<sub>max</sub> had predictive value in stage I NSCLC treated surgically; one of these studies, an analysis of 136 patients, found that a pretreatment SUV<sub>max</sub> >5.5 predicted worse recurrence and survival [23]. However, information on SUV and SABR remains very limited at this time [14-16,26]. Hoopes et al. [14] retrospectively evaluated the predictive value of PET SUV<sub>max</sub> in a prospective phase I/II dose escalation clinical trial in which SABR was given to 58 patients at doses of 24 to 72 Gy in 3 fractions. Local control rates in that trial ranged from <70% to >95% for the various dose groups, and pretreatment PET SUV<sub>max</sub> was not found to predict local control or survival. Another retrospective study by Burdick and colleagues [16] showed that pretreatment SUV<sub>max</sub> did not predict regional failure, distant failure, or survival; however, the 72 patients in that study had also been treated with a wide range of radiation doses (60 Gy in 3 fractions, 50 Gy in 5 fractions, or 50 Gy in 10 fractions), and only 68.1% of patients had had biopsy-proven NSCLC.

The relative strengths of our study were our relatively large population ( $n = 130$ ) and our inclusion of only

**Table 4 Univariate analysis of patient and dosimetric characteristics and risk of radiation pneumonitis (n = 130)**

Characteristic	Grade 0–1 RP	Grade 2–3 RP	P Value
	No. of Patients (%)	No. of Patients (%)	
Sex			0.882
Male	59 (51.3)	8 (53.3)	
Female	56 (48.7)	7 (46.7)	
Age			0.310
≥74 years	62 (53.9)	6 (40.0)	
<74 years	53 (46.1)	9 (60.0)	
COPD stage			0.154
0–II	62 (53.9)	11 (73.3)	
III–IV	53 (46.1)	4 (26.7)	
History of other type of cancer			0.440
Yes	34 (29.6)	3 (20.0)	
No	81 (70.4)	12 (80.0)	
ECOG score before SABR			0.711
0–1	71 (61.7)	10 (66.7)	
2–3	44 (38.3)	5 (33.3)	
Gross tumor volume, cm <sup>3</sup>			0.375
≥9.6	55 (47.8)	9 (60.0)	
<9.6	60 (52.2)	6 (40.0)	
Planning target volume, cm <sup>3</sup>			0.151
≥73.2	54 (47.0)	10 (66.7)	
<73.2	61 (53.0)	5 (33.3)	
Tumor location			0.471
Peripheral	106 (92.2)	13 (86.7)	
Central	9 (7.8)	2 (13.3)	
Total lung volume*			
V <sub>5</sub>			< 0.001
≥ 20.2%	51 (44.3)	14 (93.3)	
< 20.2%	64 (55.7)	1 (6.7)	
V <sub>10</sub>			< 0.001
≥ 14.3%	51 (44.3)	14 (93.3)	
< 14.3%	64 (55.7)	1 (6.7)	
V <sub>15</sub>			0.003
≥ 11.0%	52 (45.2)	13 (86.7)	
< 11.0%	63 (54.8)	2 (13.3)	
V <sub>20</sub>		0.055	
≥ 8.5%	54 (47.0)	11 (73.3)	
< 8.5%	61 (53.0)	4 (26.7)	
V <sub>25</sub>			0.055
≥ 6.4%	54 (47.0)	11 (73.3)	
< 6.4%	61 (53.0)	4 (26.7)	
V <sub>30</sub>			0.003
≥ 5.0%	52 (45.2)	13 (86.7)	
< 5.0%	63 (54.8)	2 (13.3)	

**Table 4 Univariate analysis of patient and dosimetric characteristics and risk of radiation pneumonitis (n = 130)**  
 (Continued)

V <sub>35</sub>			0.003
≥ 3.9%	52 (45.2)	13 (86.7)	
< 3.9%	63 (54.8)	2 (13.3)	
V <sub>40</sub>			0.013
≥ 3.1%	53 (46.1)	12 (80.0)	
< 3.1%	62 (53.9)	3 (20.0)	
Mean dose to total lung volume			0.013
≥ 5.05 Gy	53 (46.1)	12 (80.0)	
< 5.05 Gy	62 (53.9)	3 (20.0)	
Ipsilateral lung volume†			
V <sub>5</sub>			< 0.001
≥ 37.7%	51 (44.3)	14 (93.3)	
< 37.7%	64 (55.7)	1 (6.7)	
V <sub>10</sub>			< 0.001
≥ 28.5%	51 (44.3)	14 (93.3)	
< 28.5%	64 (55.7)	1 (6.7)	
V <sub>15</sub>			< 0.001
≥ 21.9%	51 (44.3)	14 (93.3)	
< 21.9%	64 (55.7)	1 (6.7)	
V <sub>20</sub>			< 0.001
≥ 16.9%	51 (44.3)	14 (93.3)	
< 16.9%	64 (55.7)	1 (6.7)	
V <sub>25</sub>			0.003
≥ 13.1%	52 (45.2)	13 (86.7)	
< 13.1%	63 (54.8)	2 (13.3)	
V <sub>30</sub>			0.013
≥ 10.4%	53 (46.1)	12 (80.0)	
< 10.4%	62 (53.9)	3 (20.0)	
V <sub>35</sub>			0.003
≥ 8.1%	52 (45.2)	13 (86.7)	
< 8.1%	63 (54.8)	2 (13.3)	
V <sub>40</sub>			0.013
≥ 6.3%	53 (46.1)	12 (80.0)	
< 6.3%	62 (53.9)	3 (20.0)	
Mean dose to ipsilateral lung volume			< 0.001
≥9.14 Gy	51 (44.3)	14 (93.3)	
<9.14 Gy	64 (55.7)	1 (6.7)	

\* Defined as right plus left lungs minus the gross tumor volume.

† Defined as the lung containing the lesion to be treated, minus the gross tumor volume.

Abbreviations: RP, radiation pneumonitis; COPD, chronic obstructive pulmonary disease; ECOG, Eastern Cooperative Oncology Group; SABR, stereotactic ablative radiotherapy; V<sub>x</sub>, volume of lung receiving ≥x Gy; GTV, gross tumor volume; MLD, mean lung dose.

patients with biopsy-proven, PET/CT-determined stage I (T1N0M0, T <5 cm) NSCLC who had all been treated with the same dose and who all underwent PET/CT

both before and after treatment at the same institution. Our multivariate analyses indicated that having a staging PET SUV<sub>max</sub> level >6.2 predicted worse OS, and patients



with this feature may benefit from systemic therapy to reduce the likelihood of distant failure, which still remains problematic. The predictive value of PET SUV may well depend on the dose regimen used and perhaps some patient characteristics that we did not consider. Additional studies are needed to validate our observations.

As we and others reported before, PET SUVs measured after SABR may be useful for detecting recurrence [19, 26]. In the current study, the staging PET SUV<sub>max</sub> levels for the 2 patients who developed local recurrence were 1.8 and 6.5 but had increased to 9.8 and 7.2, respectively, by 1 year after SABR. However, among the other 128 patients who did not experience local recurrence in this study, 32 patients had a SUV<sub>max</sub> >3 and 8 patients had a SUV<sub>max</sub> >5 within 6 months after SABR. Thus it seems likely that PET images obtained within 6 months after SABR may have a high false-positive rate. Indeed, we and others have noted that PET images with SUV >5 more than 6–12 months after SABR could indicate possible local recurrence, but biopsy is still recommended for confirmation [–25, 26], particularly when salvage surgery is planned [27].

The most common side effect of SABR in our study was chest-wall pain (12 patients, or 9.3%). A previous study from our group showed that limiting the chest-wall V<sub>30</sub> to <30 cm<sup>3</sup> reduced the incidence of chest-wall pain to 5% [21]. However, for lesions next to the chest wall, we recommend that >95% of the GTV plus a 5-mm margin receive at least the full prescribed dose, even if the chest-wall dose exceeds 35 Gy to 30 cm<sup>3</sup>. In our practice, 35 Gy to 50 cm<sup>3</sup> is allowed for lesions close to the chest wall.

RP can be a severe or even fatal side effect of irradiation for lesions within 2 cm of the bronchial tree treated with 54 Gy delivered in 3 fractions [4]. Reports of dose-volume analyses in SABR-induced RP have been limited [13,17,18,28-30]. Barriger and others reported correlations between total lung MLD (<4 Gy vs. >4 Gy), lung V<sub>20</sub> (<4% vs. >4%) and grade 2–4 RP among patients treated with SABR to total doses of 42–60 Gy given in 8- to 20-Gy fractions [31]. Matsuo found the association between V<sub>25</sub> and symptomatic RP after SABR (17). With our dose regimen (50 Gy in 4 fractions), our normal-tissue dose-volume constraints (Table 1), and our use of 4D CT-based treatment planning and volumetric on-board image-guided SABR delivery, we did not observe any grade 4–5 RP. We saw no difference in RP between central versus peripheral lesions when normal tissue dose volume constraints were respected and inappropriate cases were excluded, and only 3 patients (2.3%) experienced grade 3 RP. Interestingly, only MLD to the ipsilateral lung was significantly associated with RP in multivariate analysis; among the 65 patients with an ipsilateral MLD ≥9.14 Gy, 14 had grade 2–3 RP (21.5%), whereas among the 65 with an ipsilateral MLD

<9.14 Gy, only 1 (1.5%) had grade 2–3 RP ( $P < 0.001$ ). This finding is consistent with those of Guckenberger and colleagues, who also reported a correlation between irradiated ipsilateral lung volume and SABR-induced RP [30]. In addition, ipsilateral V<sub>40</sub> appears to be correlated with grade 2–3 RP when the onset times of RP were considered. The specific dose cutoffs may be different using different dose regimens. Our cutoffs should be considered only when the same or similar SABR dose regimens are used. To minimize the MLD to the ipsilateral lung, one should consider using optimal image guidance to reduce the set-up margin; prescribing the dose to the lower isodose line rather than the higher one; and not using an additional margin between the PTV to the block edge.

#### Abbreviations

4D: Four-dimensional; BED: Biologically equivalent dose; CI: Confidence interval; CT: Computed tomography; DMFS: Distant metastasis-free survival; ECOG: Eastern cooperative oncology group; FDG: Fluorodeoxyglucose; FEV1: Forced expiratory volume in 1 second; GTV: Gross tumor volume; HR: Hazard ratio; iGTV: Internal gross tumor volume; LFFS: Local failure-free survival; MLD: Mean lung dose; MRI: Magnetic resonance imaging; NSCLC: Non-small cell lung cancer; OR: Odds ratio; OS: Overall survival; PET: Positron emission tomography; PFS: Progression-free survival; PTV: Planning target volume; RP: Radiation pneumonitis; SABR: Stereotactic ablative radiotherapy; SUV<sub>max</sub>: Maximum standardized uptake value.

#### Competing interests

The authors declare that they have no competing interests.

#### Authors' contributions

JYC conceived the study, oversaw the study design and data collection, and wrote the manuscript; HL helped to conceive and coordinate the study, to collect data, and to write the manuscript; JYC and PB designed the treatment plans and supervised their delivery; JYC and HL carried out the data and statistical analysis; and RK, ZL, JW, RJM, JAR, and SGS provided data and participated in the coordination and design of the study. All authors read and approved the final manuscript.

#### Funding

Dr. Chang received a Research Scholar Award from the Radiological Society of North America and a Career Development Award from MD Anderson Cancer Center's Specialized Programs of Research Excellence in Lung Cancer from the National Cancer Institute (P50 CA70907). This research was also supported by Cancer Center Support Grant CA016672 to MD Anderson.

#### Acknowledgments

We thank the members of the Thoracic Radiation Oncology section in the Division of Radiation Oncology for their support of this clinical study and Ms. Christine Wogan of the Division of Radiation Oncology for editorial assistance.

#### Author details

<sup>1</sup>Departments of Radiation Oncology, The University of Texas MD Anderson Cancer Center, 1515 Holcombe Blvd., Houston, TX, USA. <sup>2</sup>Department of Radiation Physics, The University of Texas MD Anderson Cancer Center, Houston, TX, USA. <sup>3</sup>Department of Thoracic and Cardiovascular Surgery, The University of Texas MD Anderson Cancer Center, Houston, TX, USA.

Received: 3 May 2012 Accepted: 25 August 2012

Published: 10 September 2012

#### References

1. Jemal A, Siegel R, Ward E, Hao Y, Xu J, Thun MJ: *Cancer statistics, 2009*. *CA Cancer J Clin* 2009, **59**:225–249.

2. Rami-Porta R, Ball D, Crowley J, Giroux DJ, Jett J, Travis WD, Tsuboi M, Vallières E, Goldstraw P, International Staging Committee; Cancer Research and Biostatistics; Observers to the Committee; Participating Institutions: **The IASLC Lung Cancer Staging Project: proposals for the revision of the T descriptors in the forthcoming (seventh) edition of the TNM classification for lung cancer.** *J Thorac Oncol* 2007, **2**:593–602.
3. Onishi H, Araki T, Shirato H, Nagata Y, Hiraoka M, Gomi K, Yamashita T, Niibe Y, Karasawa K, Hayakawa K, Takai Y, Kimura T, Hirokawa Y, Takeda A, Ouchi A, Hareyama M, Kokubo M, Hara R, Itami J, Yamada K: **Stereotactic hypofractionated high-dose irradiation for stage I nonsmall cell lung carcinoma: clinical outcomes in 2045 subjects in a Japanese multiinstitutional study.** *Cancer* 2004, **101**:1623–1631.
4. Timmerman R, McGarry R, Yiannoutsos C, Papiez L, Tudor K, DeLuca J, Ewing M, Abdulrahman R, DesRosiers C, Williams M, Fletcher J: **Excessive toxicity when treating central tumors in a phase II study of stereotactic body radiation therapy for medically inoperable early-stage lung cancer.** *J Clin Oncol* 2006, **24**:4833–4839.
5. Nagata Y, Takayama K, Matsuo Y, Norihisa Y, Mizowaki T, Sakamoto T, Sakamoto M, Mitsumori M, Shibuya K, Araki N, Yano S, Hiraoka M: **Clinical outcomes of a phase I/II study of 48Gy of stereotactic body radiation therapy in 4 fractions for primary lung cancer using a stereotactic body frame.** *Int J Radiat Oncol Biol Phys* 2005, **63**:1427–1431.
6. Chang JY, Balter PA, Dong L, Yang Q, Liao Z, Jeter M, Bucci MK, McAleer MF, Mehran RJ, Roth JA, Komaki R: **Stereotactic body radiation therapy in centrally and superiorly located Stage I or isolated recurrent non-small-cell lung cancer.** *Int J Radiat Oncol Biol Phys* 2008, **72**:967–971.
7. Timmerman R, Paulus R, Galvin J, Michalski J, Straube W, Bradley J, Fakiris A, Bezjak A, Videtic G, Johnstone D, Fowler J, Gore E, Choy H: **Stereotactic body radiation therapy for inoperable early stage lung cancer.** *JAMA* 2010, **303**:1070–1076.
8. Loo BW, Chang JY, Dawson L, Kavanagh BD, Koong AC, Senan S, Timmerman RD: **Stereotactic ablative radiotherapy: what's in a name?** *Pract Radiat Oncol* 2011, **1**:38–39.
9. Lagerwaard FJ, Haasbeek CJ, Smit EF, Slotman BJ, Senan S: **Outcomes of risk-adapted fractionated stereotactic radiotherapy for stage I non-small cell lung cancer.** *Int J Radiat Oncol Biol Phys* 2008, **70**:685–692.
10. Palma D, Visser O, Lagerwaard FJ, Belderbos J, Slotman BJ, Senan S: **The impact of introducing stereotactic lung radiotherapy for elderly patients with stage I NSCLC: a population-based time-trend analysis.** *J Clin Oncol* 2010, **28**:5153–5159.
11. Xia T, Li H, Sun Q, Wang Y, Fan N, Yu Y, Li P, Chang JY: **Promising clinical outcome of stereotactic body radiation therapy for patients with inoperable stage I/II non-small-cell lung cancer.** *Int J Radiat Oncol Biol Phys* 2006, **66**:117–125.
12. Kelly P, Balter PA, Rebuena N, Sharp HJ, Liao Z, Komaki R, Chang JY: **Stereotactic body radiation therapy for patients with lung cancer previously treated with thoracic radiation.** *Int J Radiat Oncol Biol Phys* 2010, **78**:1387–1393.
13. Liu H, Zhang X, Vinogradskiy YY, Swisher SG, Komaki R, Chang JY: **Predicting radiation pneumonitis after stereotactic ablative radiation therapy in patients previously treated with conventional thoracic radiation therapy.** *Int J Radiat Oncol Biol Phys* 2012, e-Pub.
14. Hoopes DJ, Tann M, Fletcher JW, Forquer JA, Lin PF, Lo SS, Timmerman RD, McGarry RC: **FDG-PET and stereotactic body radiation therapy (SBRT) for stage I non-small-cell lung cancer.** *Lung Cancer* 2007, **56**:229–234.
15. Henderson MA, Hoopes DJ, Fletcher JW, Lin PF, Tann M, Yiannoutsos CT, Williams MD, Fakiris AJ, McGarry RC, Timmerman RD: **A pilot trial of serial 18-fluorodeoxyglucose positron emission tomography in patients with medical inoperable stage I non-small-cell lung cancer treated with hypofractionated stereotactic body radiotherapy.** *Int J Radiat Oncol Biol Phys* 2010, **76**:789–795.
16. Burdick MJ, Stephans KL, Reddy CA, Djemil T, Srinivas SM, Videtic GM: **Maximum standardized uptake value from staging FDG-PET/CT does not predict treatment outcome for early-stage non-small-cell lung cancer treated with stereotactic body radiotherapy.** *Int J Radiat Oncol Biol Phys* 2010, **78**:1033–1039.
17. Matsuo Y, Shibuya K, Nakamura M, Narabayashi M, Sakanaka K, Ueki N, Miyagi K, Norihisa Y, Mizowaki T, Nagata Y, Hiraoka M: **Dose-volume metrics associated with radiation pneumonitis after stereotactic body radiation therapy for lung cancer.** *Int J Radiat Oncol Biol Phys* 2012, **15**(4): e545–e549.
18. Guckenberger M, Kestin LL, Hope AJ, Belderbos J, Werner-Wasik M, Yan D, Sonke JJ, Bissonnette JP, Wilbert J, Xiao Y, Grills IS: **Is there a lower limit of pretreatment pulmonary function for safe and effective stereotactic body radiotherapy for early-stage non-small cell lung cancer?** *J Thorac Oncol* 2012, **7**(3):542–551.
19. Bollineni VR, Widder J, Pruijm J, Langendijk JA, Wiegman EM: **Residual <sup>18</sup>F-FDG-PET uptake 12 weeks after stereotactic ablative radiotherapy for stage I non-small-cell lung cancer predicts local control.** *Int J Radiat Oncol Biol Phys* 2012, **83**(4):e551–e555.
20. Chang JY, Dong L, Liu H, Starkschall G, Balter P, Mohan R, Liao Z, Cox JD, Komaki R: **Image-guided radiation therapy for non-small cell lung cancer.** *J Thorac Oncol* 2008, **3**:177–186.
21. Welsh J, Thomas J, Shah D, Allen PK, Wei X, Mitchell K, Gao S, Balter P, Komaki R, Chang JY: **Obesity increases the risk of chest wall pain from thoracic stereotactic body radiation therapy.** *Int J Radiat Oncol Biol Phys* 2011, **81**:91–96.
22. Higashi K, Ueda Y, Arisaka Y, Sakuma T, Nambu Y, Oguchi M, Seki H, Taki S, Tonami H, Yamamoto I: **18F-FDG uptake as a biologic prognostic factor for recurrence in patients with surgically resected non-small cell lung cancer.** *J Nucl Med* 2002, **43**:39–45.
23. Goodgame B, Pillot GA, Yang Z, Shriki J, Meyers BF, Zoole J, Gao F, Dehdashti F, Patterson A, Siegel BA, Govindan R: **Prognostic value of preoperative positron emission tomography in resected stage I non-small cell lung cancer.** *J Thorac Oncol* 2008, **3**:130–134.
24. Ohtsuka T, Nomori H, Watanabe K, Kaji M, Naruke T, Suemasu K, Uno K: **Prognostic significance of [(18)F]fluorodeoxyglucose uptake on positron emission tomography in patients with pathologic stage I lung adenocarcinoma.** *Cancer* 2006, **107**:2468–2473.
25. Jong WK, van der Heijden HF, Pruijm J, Dalesio O, Oyen WJ, Groen HJ: **Prognostic value of different metabolic measurements with fluorine-18 fluorodeoxyglucose positron emission tomography in resectable non-small cell lung cancer: a two-center study.** *J Thorac Oncol* 2007, **2**:1007–1012.
26. Zhang X, Liu H, Balter P, Allen PK, Komaki R, Pan T, Chuang HH, Chang JY: **Positron Emission Tomography for Assessing Local Failure after Stereotactic Body Radiotherapy for Non-small Cell Lung Cancer.** *Int J Radiat Oncol Biol Phys* 2012, **83**(5):1558–1565.
27. Neri S, Takahashi Y, Terashi T, Hamakawa H, Tomii K, Katakami N, Kokubo M: **Surgical treatment of local recurrence after stereotactic body radiotherapy for primary and metastatic lung cancers.** *J Thorac Oncol* 2010, **5**:2003–2007.
28. Barriger RB, Forquer JA, Brabham JG, Andolino DL, Shapiro RH, Henderson MA, Johnstone PA, Fakiris AJ: **A dose-volume analysis of radiation pneumonitis in non-small cell lung cancer patients treated with stereotactic body radiation therapy.** *Int J Radiat Oncol Biol Phys* 2012, **82**:457–462.
29. Borst GR, Ishikawa M, Nijkamp J, Hauptmann M, Shirato H, Onimaru R, van den Heuvel MM, Belderbos J, Lebesque JV, Sonke JJ: **Radiation pneumonitis in patients treated for malignant pulmonary lesions with hypofractionated radiation therapy.** *Radiation Oncol* 2009, **91**:307–313.
30. Guckenberger M, Baier K, Polat B, Richter A, Krieger T, Wilbert J, Mueller G, Flentje M: **Dose-response relationship for radiation-induced pneumonitis after pulmonary stereotactic body radiotherapy.** *Radiation Oncol* 2010, **97**:65–70.
31. Matsuo Y, Nakamoto Y, Nagata Y, Shibuya K, Takayama K, Norihisa Y, Narabayashi M, Mizowaki T, Saga T, Higashi T, Togashi K, Hiraoka M: **Characterization of FDG-PET images after stereotactic body radiation therapy for lung cancer.** *Radiation Oncol* 2010, **97**:200–204.

doi:10.1186/1748-717X-7-152

**Cite this article as:** Chang et al.: Clinical outcome and predictors of survival and pneumonitis after stereotactic ablative radiotherapy for stage I non-small cell lung cancer. *Radiation Oncology* 2012 **7**:152.