


SHORT REPORT

Open Access



# Effects of lung and airway epithelial maturation cocktail on the structure of lung bud organoids

Esmeralda Magro-Lopez, Charlotte Palmer, Joana Manso, Isabel Liste and Alberto Zambrano\* 

## Abstract

Organoids from human pluripotent stem cells are becoming suitable models for studies of organ development, drug screening, regenerative medicine, and disease modeling. Three-dimensional minilungs in Matrigel culture have recently been generated from human embryonic stem cells. These particular organoids, named lung bud organoids, showed branching airway and early alveolar structures resembling those present in lungs from the second trimester of human gestation. We show here that the treatment of such organoids with a lung and airway epithelial maturation cocktail containing dexamethasone drives lung bud organoids to the formation of paddle-racquet like structures. This strategy may help to increase the versatility of lung organoids and to generate structures more advanced than the original branching texture.

**Keywords:** Human embryonic stem cells, Lung bud organoid, Dexamethasone, Lung epithelial maturation medium

## Main text

The respiratory system originates from buds arising from the anterior foregut endoderm (AFE) through well-defined stages of differentiation named the embryonic, pseudo-glandular, canalicular, saccular, and alveolar stages. The generation of lung organoids should emulate this natural sequence of differentiation as far as possible. A number of authors have reported the generation of human lung organoids [1–3]. Dye et al. have shown the generation of small structures expressing markers of lung and airway cells, but neither branching morphogenesis nor proximodistal specification was observed [2, 3]. Snoeck's group, however, recently described the generation of three-dimensional structures from human embryonic stem cells (hESCs) that were spatially organized in a similar way to developing lung buds *in vivo*; they called these lung bud organoids (LBOs). Briefly, their strategy was the following: AFE was generated from definitive endoderm (DE) in a two-dimensional sequential development as previously described [4, 5]. After that, adherent structures (during ventralization of AFE between days 6 and 8) were expanded in suspension as clumps of cells in the presence of bone morphogenetic

protein (BMP) 4, fibroblast growth factor (FGF) 10, keratinocyte growth factor (KGF), the GSK3 $\beta$  antagonist CHIR99201, and retinoic acid (ventralization/branching medium). These LBOs structures were grown until day 25 and were then plated in Matrigel. After this, LBOs progressively underwent extensive outward branching reminiscent of saccules formed during the saccular stage of lung development and showed early signs of alveologenesi s [1]. LBOs in Matrigel contained alveolar functional type II (ATII) epithelial cells with abundant lamellar bodies.

We have recently reported the generation of two-dimensional minilungs from hESCs following the strategy delineated by Huang et al. in previous reports [4, 5]. We included some modifications regarding the cellular densities in some replatings, the final assembly of the minilungs on glass chambers, and the addition of primary myofibroblasts in order to enrich the generated two-dimensional structures [6]. The generation of airway and lung epithelial cells implicated the generation of NKX2.1<sup>+</sup>/FOXA2<sup>+</sup> cells that corresponded to the lung field (progenitors) of AFE, their expansion until day 26, and their terminal differentiation in the presence of a lung and airway maturation cocktail containing CHIR99021, FGF10, KGF, isobutylmethylxanthine (IBMX), 8-bromo-cAMP, and dexamethasone. IBMX, 8-bromo-cAMP, and dexamethasone, are factors that

\* Correspondence: [azambra@isciii.es](mailto:azambra@isciii.es)

Functional Unit for Research into Chronic Diseases, Institute of Health Carlos III, Ctra. Majadahonda-Pozuelo Km 2, 28220 Madrid, Spain



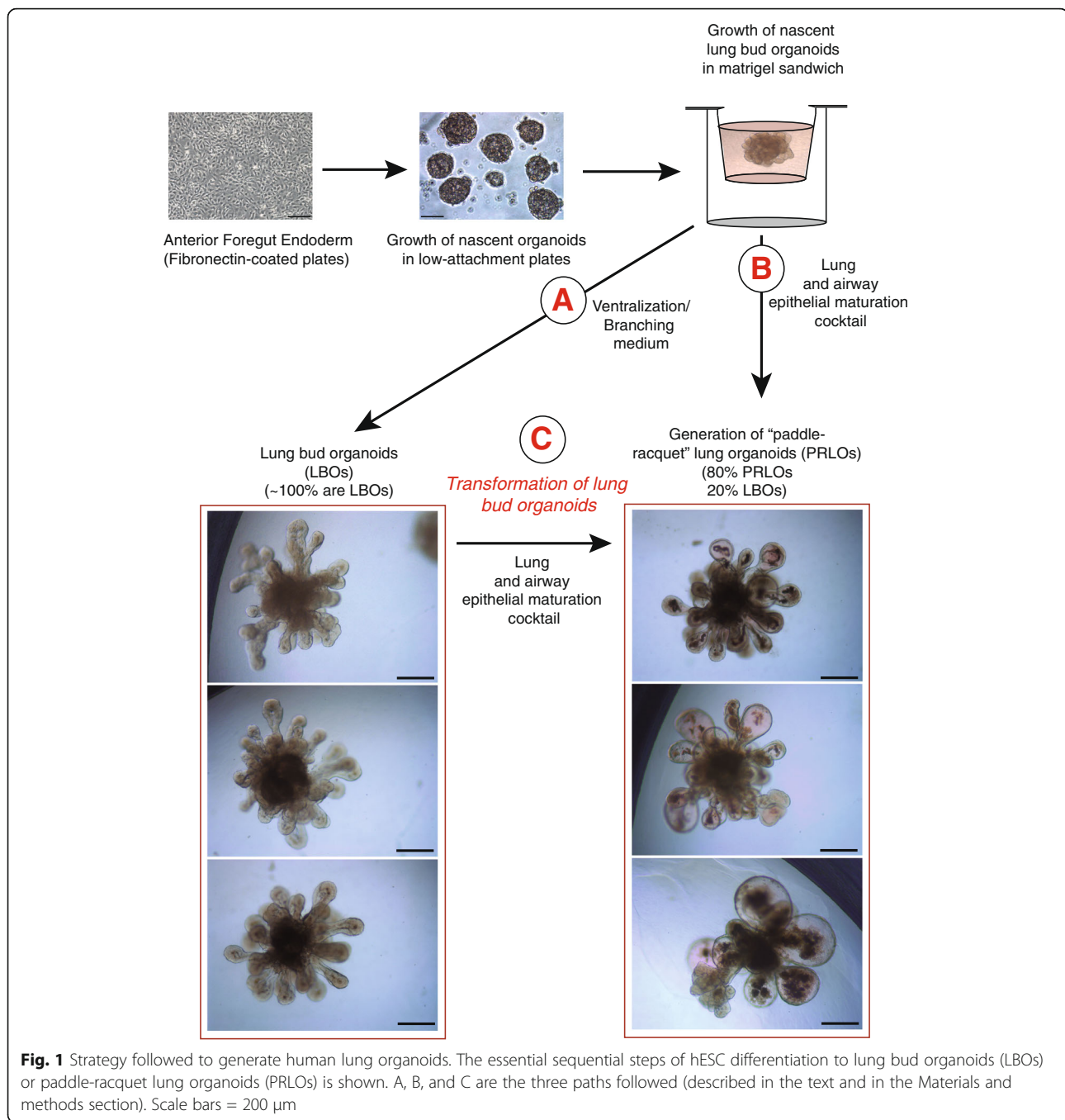
induce alveolar maturation in fetal mouse lung explants and increase surfactant protein expression in mouse ESC-derived lung progenitors [7, 8]. This in-vitro differentiation protocol yielded at least six types of lung and airways cells but was biased toward distal cells. To generate three-dimensional structures, we employed the hESC line AND-1 [6] and followed the LBO formation strategy described by Chen et al. [1]. Some modifications in the protocol were included (see Materials and methods). Essentially, after AFE formation, cells were briefly trypsinized into small 3–10 cell clumps. These clumps were plated onto low-attachment plates in ventralization/branching medium. These three-dimensional clumps (nascent lung bud organoids) were incubated and fed every other day for approximately 20–25 days. After that, these nascent organoids were embedded into a Matrigel sandwich assembled on MW12 inserts (or transwells). Growing branching structures were easily visualized under the microscope after 1 or 2 weeks of treatment. However, in contrast to the strategy of Chen et al. which is based on the ventralization/branching medium, we also grew the nascent LBOs in the presence of a lung and alveolar epithelial maturation cocktail containing CHIR99021, FGF10, KGF, IBMX, and 8-bromo-cAMP. The aim of this was to test whether factors necessary for the maturation of lung epithelial cells could give rise to the generation of structures more advanced than the saccular stage. Figure 1 shows the overall strategy followed. After the early generation of nascent LBOs, we either grew the organoids in the presence of the ventralization/branching medium (path “A”;  $n = 56$ ) or in the presence of the lung and alveolar epithelial maturation cocktail until approximately 65–70 days (path “B”;  $n = 20$ ). In addition, a number of LBOs were also treated with the lung and alveolar epithelial maturation cocktail at day 70 for approximately 20 days (path “C”;  $n = 20$ ). The incubation with ventralization/branching medium (path “A”) consistently yielded LBO structures matching those described by Chen et al. [1] ( $n = 56$ ;  $P < 0,0001$ ). However, the incubation with the lung and alveolar epithelial maturation cocktail (paths “B” or “C”) produced approximately 20% LBO organoids and 80% organoids that we named “paddle-racquet” lung organoids (PRLOs) ( $n = 40$ ;  $P < 0,001$ ). These organoids consisted of rounded expansions of the lung buds sometimes showing partitioned expansions as shown in Fig. 1 or the presence of large structures resembling alveolospheres. A striking feature of these PRLOs is the presence of a dense material in the center of the rounded expansion. This material probably has its origin in the columnar epithelium of the original LBOs, as some material seems to detach from the inner surface and fall into the lumen of the PRLOs (Fig. 1). Figure 2a shows these observations in more detail. Pictures 1–3 show the finger-shaped extensions occurring during the development of LBOs. The expression of mature surfactant protein (SFTP) B was analyzed by indirect immunofluorescence of

typical LBOs. As shown in Fig. 2a (picture 4) the expression of SFTP B was abundant and localized predominantly to the tips of the extensions as previously described [1]. Figure 2b (pictures 5 and 6) shows the result of the incubation of LBOs with the lung and alveolar epithelial maturation cocktail (path “C”) for 20 days. A dense material, probably coming from the original columns of LBOs, is present in the lumen of PRLOs. Picture 7 (Fig. 2c) shows a strip of columnar material that is detaching from the inner surface. As a result of this, the PRLOs are composed of thin surfaces larger than those of the LBOs. The analysis of these PRLOs by immunofluorescence showed the presence of abundant SFTP B expression in cells forming the rounded extensions of the PRLOs (Fig. 2d). As it appears from the immunofluorescence result, the structural changes observed did not seem to be due to a net loss of ATE cells but were rather due to overall structure remodeling. According to this, the expression levels of surfactant genes and of an ATE cell marker (*AQP5*) observed by quantitative real-time polymerase chain reaction (qRT-PCR) were very similar, showing no significant differences (Fig. 2e). Taken together, these results show that factors inducing lung and alveolar epithelial maturation may alter the structure of LBOs favoring the formation of nascent alveolar structures that could anticipate the entry into the alveolar stage of development. Our strategy may also help to increase the versatility of lung organoids and to generate structures to model diseases such as congenital surfactant deficiency syndromes [9].

## Materials and methods

### Maintenance of hESCs

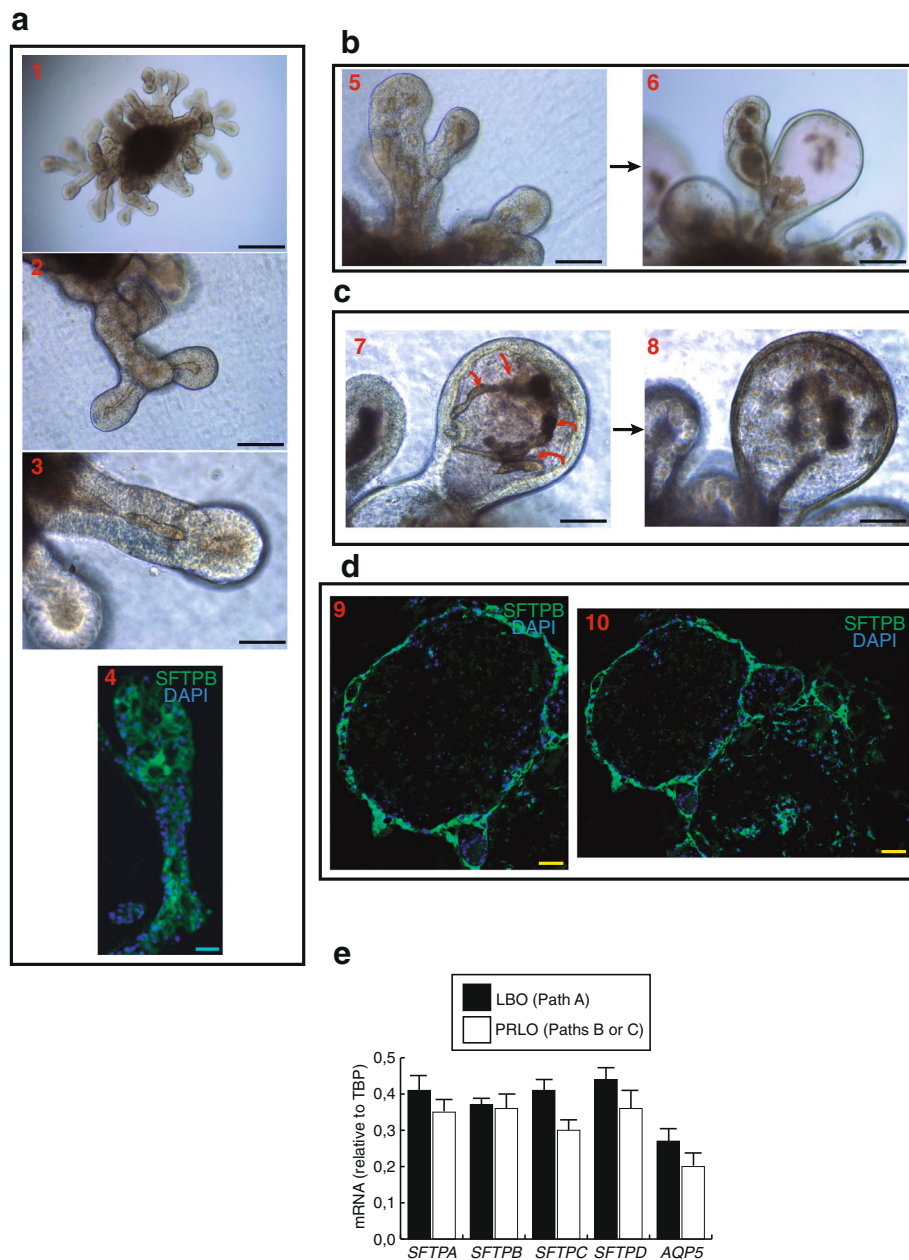
AND-1, a human embryonic stem cell line, was obtained from the “Biobanco de células madre de Granada” (ISCIII, Spain) at passages 27–40. Mouse embryonic fibroblasts (MEFs) were obtained at 13.5 days postcoitum from C57BL/6 mice as described previously [10]. This line was karyotyped and verified for mycoplasma contamination. MEFs were mitotically inactivated by overnight treatment with 2  $\mu\text{g}/\text{mL}$  mitomycin C (cat. no. M4287; Sigma-Aldrich) and plated at a density of approximately 16,000 cells/ $\text{cm}^2$ . AND-1 cells were cultured on MEFs under standard conditions (<http://stembook.org>). The maintenance medium was composed of knockout Dulbecco’s modified Eagle’s medium (KO-DMEM; cat. no. 10829–018 Gibco; Life Technologies), 20% KO serum replacement (cat. no. 10828–010 Gibco; Life Technologies), 0.1 mM  $\beta$ -mercaptoethanol (cat. no. 21985–023 Gibco; Life Technologies), 2 mM Glutamax (cat. no. 35050–061, Gibco; Life Technologies), nonessential amino acids (cat. no. 11140–050 Gibco; Life Technologies), and primocin (cat. no. 12105-MM, InvivoGen). The medium was filtered using a 0.22- $\mu\text{m}$  pore filter system (cat. no. 431097, Corning), and 10 ng/mL recombinant human basic fibroblast



growth factor (hbFGF; cat. no. PHG6015, Invitrogen) and 10  $\mu$ M Y-27632 (cat. no. 1254, Tocris R&D Systems) were added before use. Medium was changed daily and cells were passaged either by enzymatic (the collagenase IV method) (collagenase IV; cat. no. 11140-050, Gibco; Life Technologies) or mechanical procedures (<http://stembook.org>). Cells were maintained in an undifferentiated state in a 5% CO<sub>2</sub>/air environment. The differentiation process was carried out under normoxic conditions unless otherwise indicated.

#### Primitive streak formation and induction of DE

Induction of endoderm was carried out as previously described [6]. Briefly, primitive streak formation and endoderm induction were performed in serum-free differentiation (SFD) medium. SFD medium was composed of a mix of IMDM:F12 (3:1) media (cat. nos. B12-722F and 10-080 CVR, Corning), supplemented with N2 (cat. no. 17502-048, Gibco; Life Technologies), B27 (cat. no. 17504-044, Gibco; Life Technologies), 2 mM Glutamax (cat. no. 35050-061 Gibco; Life Technologies), 1% penicillin-streptomycin



**Fig. 2** Morphological features of lung bud organoids (LBOs) and paddle-racquet lung organoids (PRLOs), and expression of alveolar cells markers. **a** Representative micrographs of LBOs and PRLOs. Pictures 1–3 are representative micrographs of LBOs at day 38 showing the typical finger-shaped extensions. Scale bars = 200  $\mu$ m (pictures 1,2) and 100  $\mu$ m (picture 3). Picture 4 shows the expression of surfactant protein B (SFTPB) by immunofluorescence. Scale bar = 50  $\mu$ m. **b** Pictures 5 and 6 show the effect of the treatment with the lung and airway epithelial maturation cocktail (path “C”, see text); Scale bars = 200  $\mu$ m. **c** Pictures 7 and 8 are representative micrographs showing the detachment of material from the inner surface of the growing PRLO. Scale bars = 100  $\mu$ m. **d** Pictures 9 and 10 are representative immunofluorescence micrographs showing the expression of SFTPB at the surface of PRLOs. Scale bars = 50  $\mu$ m. **e** Expression of surfactant genes (AII cell markers) and *AQP5* (AI cell marker) by qRT-PCR

(DE17-602E, Lonza), and 0.05% bovine serum albumin (BSA; cat. no. A7906, Sigma-Aldrich). The medium was filtered using a 0.22- $\mu$ m pore filter system (cat. no. 431097, Corning), and 50  $\mu$ g/mL ascorbic acid (cat. no. A4554, Sigma-Aldrich) and 0.04  $\mu$ L/mL monothioglycerol (stock

>97%, cat. no. M6145, Sigma-Aldrich) were added before use. MEFs were depleted by passaging AND-1 onto Matrigel-coated (cat. no. 354230, Life Technologies) plates. Embryoid bodies (EBs) were formed in low-attachment six-well plates (cat. no. 3471, Corning) and maintained in



SFD medium in a 5% CO<sub>2</sub>/5% O<sub>2</sub>/95% N<sub>2</sub> environment (Galaxy 48R incubator; New Brunswick). For primitive streak formation, 10 μM Y-27632, 10 ng/mL Wnt3a (cat. no. 5036-WN, R&D Systems) and 3 ng/mL human BMP4 (cat. no. 314-BP, R&D Systems) was used. EBs were collected, re-suspended carefully in endoderm induction medium containing 10 μM Y-27632, 0.5 ng/mL human BMP4, 2.5 ng/mL hbFGF, and 100 ng/mL human activin (cat. no. 338-AC, R&D Systems). Cells were fed after 36–48 h depending on cell density by removing half the old medium and adding half fresh medium.

### Induction of AFE

AFE was induced as previously described [6]. Briefly, EBs were dissociated into single cells with trypsin. Dissociated cells were transferred to a conical tube containing stop medium to neutralize the trypsin. Cells were centrifuged for 5 min at 850 rpm, washed carefully twice with SFD medium and counted. For AFE induction, 25,000–30,000 cells/cm<sup>2</sup> were plated on fibronectin-coated (F0895, Sigma-Aldrich) 12-well tissue culture plates in AFE induction medium 1 (SFD medium supplemented with 10 mM SB-431542 (cat. no. 1614, Tocris) and 100 ng/mL of NOGGIN (cat. no. 6057, R&D Systems)). After 24 h of incubation, the medium was aspirated and AFE induction medium 2 (SFD medium supplemented with 1 μM IWP2 (cat. no. 3533, Tocris) and 10 μM of SB-431542) was added to the cultures. This process was carried out under normoxic conditions.

### Formation of lung bud organoids

After AFE formation, cells were briefly trypsinized into small 3–10 cell clumps and the reaction was halted with stop medium (IMDM medium (BE12-722F) supplemented with 50% fetal bovine serum (FBS; F7524, Sigma-Aldrich), 2 mM Glutamax, 1% penicillin-streptomycin). Cells were then centrifuged for 5 min at 850 rpm and washed carefully twice with an excess of SFD medium. The clumps were plated onto low-attachment six-well plates (cat. no. 3471, Corning) in branching medium (SFD medium containing 3 μM CHIR99021, 10 ng/mL FGF10, 10 ng/mL KGF, 10 ng/mL BMP4, 50 nM *all-trans* retinoic acid). These three-dimensional clumps (nascent lung bud organoids) were incubated and fed every other day for approximately 20–25 days. After that, these nascent organoids were embedded into a Matrigel sandwich assembled on MW12 inserts (or transwells). Briefly, 100 μL Matrigel was loaded on the transwell insert and allowed to gel. Then nascent organoids were picked up with a wide mouth plastic Pasteur pipette, divided into MW24 wells containing 50% Matrigel diluted in branching media, and immediately transferred onto the first layer of Matrigel. After solidification of this intermediate layer containing the nascent organoids, 100 μL Matrigel was added on top. Finally, each sandwich containing various organoids was incubated with 200 μL

branching media inside the transwell, and 500 μL around it. Medium inside the transwell was changed every 2–3 days. Around the transwells, the medium was added on a regular basis to maintain the bottom of the insert in continuous contact with the medium. Growing branching structures were easily visualized under the microscope after 1 or 2 weeks. These lung bud organoids or three-dimensional minilungs were treated or not with the lung and alveolar epithelial maturation cocktail (SFD medium containing 3 μM CHIR99021, 10 ng/mL FGF10, 10 ng/mL KGF, 0.1 mM IBMX, 0.1 mM 8-bromo-cAMP, and 60 nM dexamethasone) at the indicated times.

### Indirect immunofluorescence of lung bud organoids

Organoids were picked up from the MW12 inserts, transferred into a well of a MW12 and fixed with 4% paraformaldehyde (PFA) for 15 min at room temperature. After that, the organoids were washed three times with phosphate-buffered saline (PBS) and incubated overnight at 4 °C with 30% sucrose. The sucrose was then exchanged for a solution of 7.5% gelatin/15% sucrose and incubated for 15 min at 37 °C. Organoids were then transferred to cryomolds containing solidified 7.5% gelatin/15% sucrose and were progressively embedded in various layers of solidified 7.5% gelatin/15% sucrose. These preparations were cut into 10-μm sections in a Leica CM3050 cryostat. Organoid sections were analyzed by indirect immunofluorescence. Briefly, the sections were washed with PBS and permeabilized with PBS/1% BSA/0.25% Triton X-100 for 5 min at room temperature. After that, the sections were washed and blocked for 30 min at room temperature with blocking solution (PBS/1% BSA). The sections were incubated for 2 h with an antibody against surfactant protein B (cat. no. sc-133143, Santa Cruz Biotech). Preparations were then washed with washing solution and incubated with a secondary antibody conjugated with Alexa fluor dye (488) from Life Technologies (A-11029) for 1 h at room temperature. Nuclei were counterstained with DAPI and samples were mounted with ProLong Diamond (P36961; Life Technologies). Cell images were captured with a fluorescence microscopy (Zeiss Axio) equipped with a camera (Axiocam MRm) and AxioVision software.

### qRT-PCR

RNA extraction and RT reactions were performed with Trizol reagent (cat. no. 15596026; Ambion) and the high-capacity cDNA kit (cat. no. 4387406; Applied Biosystems) following the manufacturer's instructions. Real-time PCR was performed using the powerUp SYBR Green mix (cat. no. A25742) and the Quantstudio-3 system from Applied Biosystems. The relative amounts of the amplification products were calculated by the  $\Delta\Delta C_t$  method. The genes analyzed, and the sequences of the oligonucleotides employed in this study, are shown in Table 1.

**Table 1** The genes analyzed, and the sequences of the oligonucleotides employed in this study

Gene	Oligonucleotides sequences
<i>SRFPA</i>	5'-GTGCGAAGTGAAGGACGTTTGT 5'-TTTGAGACCATCTCCCGTCCC
<i>SRFTPB</i>	5'-TCTGAGTGCCACCTCTGCATGT 5'-TGGAGCATTGCCTGTGGTATGG
<i>SRFTPC</i>	5'-CCTTCTTATCGTGGTGGTGGT 5'-TCTCCGTGTGTTCTGGCTCATGT
<i>SRFTPD</i>	5'-TGACTGATTCCAAGACAGAGGGCA 5'-TCCACAAGCCCTGTCATTCCACT
<i>AQP5</i>	5'-GCCATCCTTACTTCTACCTGCTC 5'-GCTCATACGTGCCTTTGATGATGG

**Statistical analysis**

Statistical significance of data was determined by the analysis of variance followed by the Newman–Keuls or Bonferroni post-hoc tests for the experiments with three experimental groups.  $P < 0.05$  was considered significant. Significance of the analysis of variance test is indicated in the text. Statistics were calculated with GraphPad Prism 7 software. Experiments were repeated at least two times.

**Abbreviations**

AFE: Anterior foregut endoderm; ATI: Alveolar type II cell; BMP: Bone morphogenetic protein; BSA: Bovine serum albumin; DE: Definitive endoderm; EB: Embryoid body; FBS: Fetal bovine serum; FGF: Fibroblast growth factor; hbFGF: Human basic fibroblast growth factor; hESC: Human embryonic stem cell; IBMX: Isobutylmethylxanthine; KGF: Keratinocyte growth factor; LBO: Lung bud organoid; MEF: Mouse embryonic fibroblast; PBS: Phosphate-buffered saline; PRL0: Paddle-racquet lung organoid; qRT-PCR: Quantitative real-time polymerase chain reaction; SFD: Serum-free differentiation; SFTP: Surfactant protein

**Acknowledgments**

We thank the core facilities of the Functional Unit for Research into Chronic Diseases (UFIEC, ISCIII) for technical help.

**Funding**

This work was supported by grants MPY-1038/14 and MPY-1146/16 from ISCIII to AZ and SAF-2015-71140-R from MINECO to IL.

**Availability of data and materials**

Please contact the corresponding author for data requests.

**Authors' contributions**

EM-L, CP, JM, and IL performed and designed the experiments and analyzed the data. AZ performed and designed the experiments, analyzed the data, wrote the paper, and conceived the project. All authors read and approved the final manuscript.

**Ethics approval and consent to participate**

The use of the hESC line AND-1 and the experimental procedures of this study were approved by the ISCIII Ethics Committee and the National Committee of Guarantees for the Use and Donation of human Cells and Tissues (ref. no. 436351 1).

**Consent for publication**

Not applicable.

**Competing interests**

The authors declare that they have no competing interests.

**Publisher's Note**

Springer Nature remains neutral with regard to jurisdictional claims in published maps and institutional affiliations.

Received: 16 May 2018 Revised: 14 June 2018

Accepted: 26 June 2018 Published online: 11 July 2018

**References**

- Chen YW, Huang SX, de Carvalho A, Ho SH, Islam MN, Volpi S, Notarangelo LD, Ciancanelli M, Casanova JL, Bhattacharya J, Liang AF, Palermo LM, Porotto M, Moscona A, Snoeck HW. A three-dimensional model of human lung development and disease from pluripotent stem cells. *Nat Cell Biol.* 2017;19:542–9.
- Dye BR, Dedhia PH, Miller AJ, Nagy MS, White ES, Shea LD, Spence JR. A bioengineered niche promotes in vivo engraftment and maturation of pluripotent stem cell derived human lung organoids. *Elife.* 2016;5:e19732.
- Dye BR, Hill DR, Ferguson MA, Tsai YH, Nagy MS, Dyal R, Wells JM, Mayhew CN, Nattiv R, Klein OD, White ES, Deutsch GH, Spence JR. In vitro generation of human pluripotent stem cell derived lung organoids. *Elife.* 2015;4. <https://doi.org/10.7554/eLife.05098>.
- Huang SX, Green MD, de Carvalho AT, Mumau M, Chen YW, D'Souza SL, Snoeck HW. The in vitro generation of lung and airway progenitor cells from human pluripotent stem cells. *Nat Protoc.* 2015;10:413–25.
- Huang SX, Islam MN, O'Neill J, Hu Z, Yang YG, Chen YW, Mumau M, Green MD, Vunjak-Novakovic G, Bhattacharya J, Snoeck HW. Efficient generation of lung and airway epithelial cells from human pluripotent stem cells. *Nat Biotechnol.* 2014;32:84–91.
- Magro-Lopez E, Guijarro T, Martinez I, Martin-Vicente M, Liste I, Zambrano A. A two-dimensional human minilung system (model) for respiratory syncytial virus infections. *Viruses.* 2017;9(12):E379.
- Gonzales LW, Guttentag SH, Wade KC, Postle AD, Ballard PL. Differentiation of human pulmonary type II cells in vitro by glucocorticoid plus cAMP. *Am J Physiol Lung Cell Mol Physiol.* 2002;283:L940–51.
- Longmire TA, Ikononou L, Hawkins F, Christodoulou C, Cao Y, Jean JC, Kwok LW, Mou H, Rajagopal J, Shen SS, Downton AA, Serra M, Weiss DJ, Green MD, Snoeck HW, Ramirez MI, Kotton DN. Efficient derivation of purified lung and thyroid progenitors from embryonic stem cells. *Cell Stem Cell.* 2012;10:398–411.
- Whitsett JA, Wert SE, Weaver TE. Alveolar surfactant homeostasis and the pathogenesis of pulmonary disease. *Annu Rev Med.* 2010;61:105–19.
- Zambrano A, Garcia-Carpizo V, Gallardo ME, Villamuera R, Gomez-Ferreria MA, Pascual A, Buisine N, Sachs LM, Garesse R, Aranda A. The thyroid hormone receptor beta induces DNA damage and premature senescence. *J Cell Biol.* 2014;204:129–46.

**Ready to submit your research? Choose BMC and benefit from:**

- fast, convenient online submission
- thorough peer review by experienced researchers in your field
- rapid publication on acceptance
- support for research data, including large and complex data types
- gold Open Access which fosters wider collaboration and increased citations
- maximum visibility for your research: over 100M website views per year

At BMC, research is always in progress.

Learn more [biomedcentral.com/submissions](https://biomedcentral.com/submissions)

