

Letter to the editor

Open Access

A new species of *Atelopus* (Amphibia: Bufonidae) from eastern Panama

A new species of the genus *Atelopus*, *Atelopus fronterizo* **sp. nov.**, from eastern Panama is described herein based on molecular, morphological, and bioacoustic evidence. The new species can be distinguished from its congeners occurring in the region by a combination of the following characters: (1) phalangeal reduction in thumb; (2) SVL (females only) (35.1–50.1; $n=13$), HW/SVL (0.23–0.34; $n=59$), EYND/HW (0.27–0.39; $n=60$), TIBL/SVL (0.41–0.56; $n=58$), and HAL/SVL (0.22–0.28; $n=49$); (3) dorsal color pattern with green or yellow background and extensive dark olive blotches forming transversal bands or mottling; (4) advertisement call duration 176–235 ms with 19–34 pulses, average pulse rate 131.69 pulses/s, and dominant frequency 2 422.50–2 606.50 Hz. The new species is nested within the Central American clade of *Atelopus*. The minimum Kimura-2-parameter (K2P) genetic divergence between *Atelopus fronterizo* **sp. nov.** and its most phylogenetically similar congeners (*A. certus* and *A. glyphus*) is >2.6% for 16S and >4.9% for *COI* (Table 1). The phylogenetic relationship is strongly supported by ultrafast bootstrap values for the maximum-likelihood trees of both genetic markers (16S, 96; *COI*, 100, Figure 1A). Bayesian analysis of the concatenated sequences resulted in a tree with similar topology and high posterior probability support (0.99; Supplementary Figure S1). In addition, haplotype networks inferred from *COI* and 16S (Supplementary Figure S2) showed a well-separated clade containing the new species (two for *COI*, four for 16S). The number of mutational steps between haplotypes for the new species samples is very low (1–4 in 16S; one in *COI*), and the minimum number of mutational steps from the nearest species is nine for 16S (distance to *A. certus*) and 28 for *COI* (distance to *A. glyphus*).

Harlequin frogs occur from Costa Rica to Bolivia (Lötters, 1996; Lötters et al., 2011; Savage, 2002). Nearly a hundred species (AmphibiaWeb, 2020; Frost, 2020) are currently recognized, six of which occur in Panama: i.e., *Atelopus*

certus Barbour, 1923; *Atelopus chiriquiensis* Shreve, 1936; *Atelopus glyphus* Dunn, 1931; *Atelopus limosus* Ibáñez R., Jaramillo, and Solís, 1995; *Atelopus varius* (Lichtenstein and von Martens, 1856); and *Atelopus zeteki* Dunn, 1933. The geographical distribution of the new species and other Panamanian *Atelopus* species is shown in Figure 1B.

During recent field surveys in the mountain ranges of eastern Panama, we collected five *Atelopus* specimens, along with recordings of calling males. Subsequent molecular analysis revealed that our samples were clustered together, comprising a clade well separated from all known species. Comparison of our specimens with material in museum collections demonstrated that the species has a long scientific history. It was first collected in 1911 by naturalist Henri Pittier near Puerto Obaldia on the Caribbean coast of Darién (Heckadon-Moreno, 1996). This oldest known specimen, stored in the United States National Museum (catalog No. USNM 48594), was presented by Dunn (1931) as a paratype of *Atelopus glyphus*. Since then, the species has been repeatedly collected and examined (Breder, 1946; Cocroft et al., 1990; Savage, 1972) without any taxonomic consequences. Recently, several authors have identified this taxon as *Atelopus* cf. *limosus* (Lewis et al., 2019) or *Atelopus* sp. “Puerto Obaldía-Capurganá” (Ramírez et al., 2020).

Field work was carried out from 2011 to 2017 in the Chucunaque and Tuira Basins of the eastern Panamanian lowlands, and in all principal eastern Panamanian mountain ranges. The collected specimens were euthanized with T61 and fixed with a preservative mixture of 5 mL formalin (40%) and 1 L ethanol 96 (94%), then stored in ethanol (70%). All geographical coordinates were recorded based on the WGS 1984 datum. A map was created using QGIS 2.18 (Las Palmas) with the OpenStreetMap layer (OSM Contributors, 2015). Abbreviations for museum collections followed Sabaj (2016).

Morphometric data were taken following Bravo-Valencia & Rivera-Correa (2011). Abbreviations of measurements are as

This is an open-access article distributed under the terms of the Creative Commons Attribution Non-Commercial License (<http://creativecommons.org/licenses/by-nc/4.0/>), which permits unrestricted non-commercial use, distribution, and reproduction in any medium, provided the original work is properly cited.

Copyright ©2021 Editorial Office of Zoological Research, Kunming Institute of Zoology, Chinese Academy of Sciences

Received: 01 November 2020; Accepted: 24 March 2021; Online: 26 March 2021

Foundation items: This work was supported by the Sistema Nacional de Investigación (SNI) of SENACYT, Panama, and M.V. received institutional support from Palacky University

Table 1 K2P distances for mitochondrial fragments of 16S and *COI* genes of *Atelopus* species from Panamá and Colombian samples of *A. spurrelli*.

Species	1 n=2	2 n=2	3 n=3	4 n=1	5	6 n=7	7 n=19
1 <i>A. fronterizo</i> sp. nov. n=4	0.24 0.50–2.04	5.18–5.69	4.93–5.70	8.88–9.16		8.64–10.02	9.74–11.49
2 <i>A. certus</i> n=2	2.55–3.08	0.71 1.01	2.41–3.14	9.48–9.74		9.98–10.02	9.98–10.57
3 <i>A. glyphus</i> n=3	2.55–3.60	1.52–2.55	0.00–0.47 0.00–0.50	8.88–9.14		9.18–9.74	8.64–9.72
4 <i>A. spurrelli</i> n=2	4.67–5.22	5.75	5.74–6.29	0.00 0.00		8.04–8.85	8.85–11.71
5 <i>A. varius</i> n=5	3.61–4.67	4.67–5.75	4.15–5.22	4.12–4.65	0.00–0.50		
6 <i>A. zeteki</i> n=7	3.60–5.77	4.66–6.87	4.13–6.33	4.11–5.74	0.00–2.03	0.00–3.90 0.00–2.55	0.00–6.50
7 <i>A. limosus</i> n=23	4.15–5.22	4.67–6.31	4.15–5.77	4.12–5.19	0.50–2.03	0.50–3.08	0.00–6.23 0.00–1.52
8 <i>A. chiriquiensis</i> n=1	4.15–4.69	4.13–4.67	3.61–4.15	4.12	1.52–2.03	1.52–3.08	1.52–2.04

Ranges represent minimum and maximum observed distances. Intraspecific genetic distances are shown along diagonal of matrix. Values correspond to interspecific genetic distances of 16S and *COI* genes (*COI* in bold); *COI* sequences of *A. varius* and *A. chiriquiensis* were not available.

follows: SVL (snout-vent length), TIBL (shank length), FTL (foot length), HL (head length from point behind angle of jaw to tip of snout), HW (head width at widest point), EYDM (eye diameter), EYND (eye to nostril distance), IOID (interorbital internal distance), IND (internarial distance), FAL (length of flexed forearm), HAL (hand length from proximal edge of outer metacarpal tubercle to tip of finger III), and THBL (thumb length from outer metacarpal tubercle to tip of finger I). Measurements of frogs were taken to the nearest 0.1 mm with digital calipers. Webbing formulae followed Myers & Duellman (1982) and Savage & Heyer (1997). Museum and field numbers of voucher specimens are listed in Supplementary Table S1.

The DNA extraction protocols followed Batista et al. (2016). Details on final alignment, maximum-likelihood (ML) analysis, Bayesian analysis, and haplotype network construction are provided in the Supplementary Notes. GenBank accession Nos. of the sequences used (including those submitted by us) are listed in Supplementary Tables S2, S3.

For confirmed candidate species (CCS) and their delimitation, we followed the integrative concept for amphibians of Vieites et al. (2009). For species-level analysis, genetic divergences were calculated using the Kimura 2-parameter (K2P) model (Kimura, 1980) for 16S and *COI* separately in MEGA 6. Default values were retained for all parameters. Statistical analyses of morphometric characters were performed using SPSS 21.0.

Details on call recordings and bioacoustic methodology are described in the Supplementary Notes.

Molecular analysis (mitochondrial DNA (mtDNA) 16S and *COI*) of *Atelopus* specimens from the San Blas Mountains (two specimens from Nurra) and Cerro Tacarcuna slopes (one specimen from Pechito Parao near Río Tuquesa and one

specimen from Río Púculo) confirmed that these samples formed a monophyletic lineage and sister clade to the clade containing *A. certus* and *A. glyphus* from eastern Panamá (Figure 1A). Discriminant function analysis (DFA) of morphometric characters of *Atelopus* from eastern Panamá (Supplementary Figure S3) correctly classified the new species, with 80.4% of specimens separated from related species according to *a priori* groupings (correct classification for 85.3% of *Atelopus fronterizo* sp. nov.; 70% of *A. glyphus*; 50% of *A. certus*). The principal morphological variables contributing to the grouping in order of relevance were: (1) HW/SVL, (2) EYND/HW, (3) TIBL/SVL, (4) HAL/SVL; first function: $DS = 0.23 \times HW/SVL \pm 0.18 \times EYND/HW - 0.65 \times TIBL/SVL + 4.24 \times HAL/SVL$; second function: $DS = -0.22 \times HW/SVL \pm 0.45 \times EYND/HW + 1.72 \times TIBL/SVL + 5.07 \times HAL/SVL$. When including SVL alone, DFA correctly classified 87% of the specimens. Moreover, the new species can be distinguished from all other species of *Atelopus* occurring in eastern Panamá by additional morphological and bioacoustic characters. According to our findings, we describe the species as new to science.

Taxonomic account

Atelopus fronterizo sp. nov. (for synonymy see Supplementary Notes)

Holotype: MHCH 3110 (AB 543; Figure 1C–H), from Río Púculo, Pinogana, Provincia Darién, Panamá (N8°1'44.40", W77°22'10.20"; 132 m a.s.l.), collected by Abel Batista on 10 June 2012.

Paratypes: Two adult males, SMF 97122 (AB720) and MHCH 2655 (AB733), both from Nurra, Comarca Wargandi, collected by Milan Veselý and Abel Batista on 2 October 2012 (N9°3'36.00", W77°58'44.4"; 339 m a.s.l.); adult male MHCH

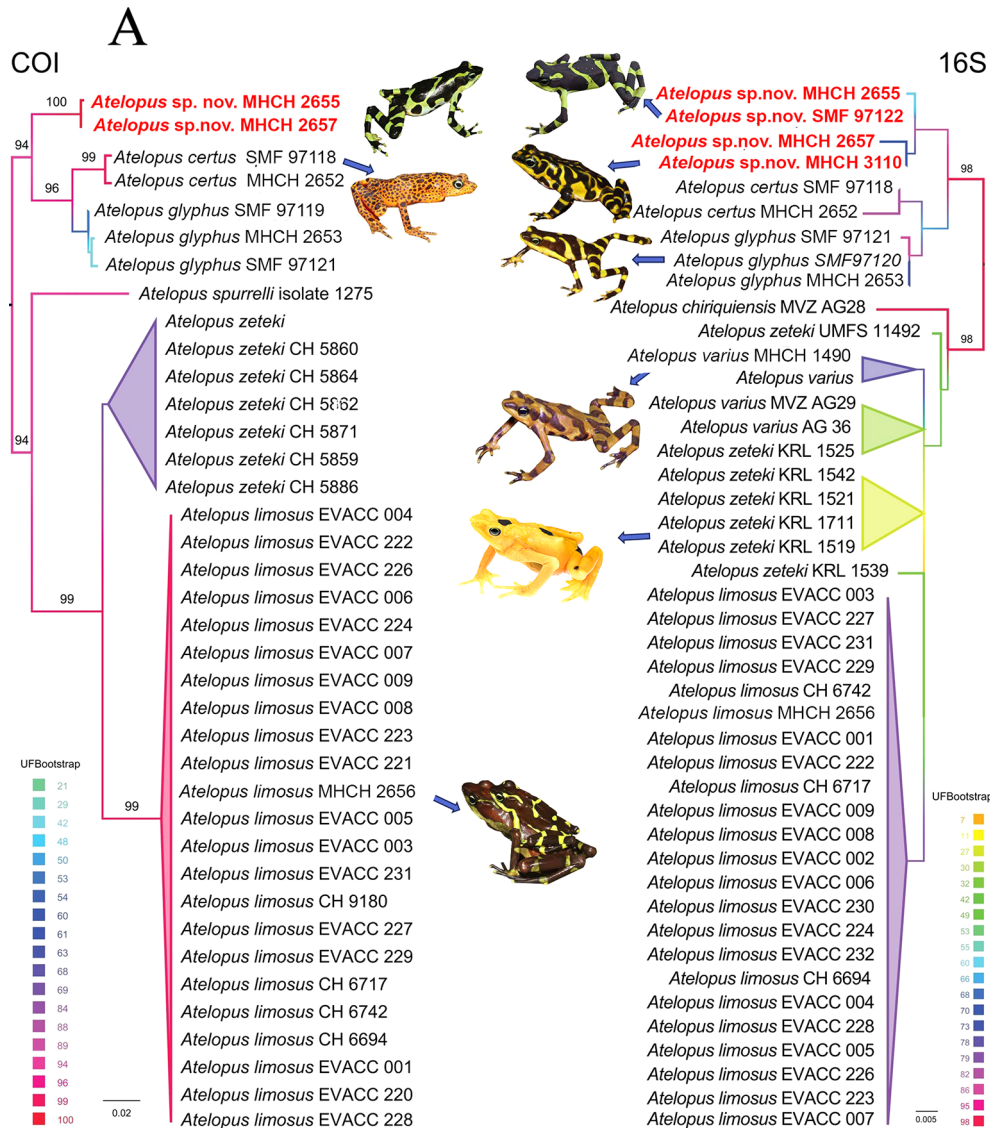
2657 (AB830) from Cerro Pechito Parao, Bajo Pequeño, Lajas Blancas, Cémaco, Comarca Embera-Wounaan (N8°28'31.80", W77°31'9.84"; 472 m a.s.l.), collected by Abel Batista and Milan Veselý on 5 November 2012 (Supplementary Figure S4).

Etymology: The species epithet “*fronterizo*” refers to the area in which the species is distributed, i.e., the border between Panama and Colombia. Panamanian people use “*fronterizo*” to refer to someone living at the Panamanian border police SENAFRONT (Servicio Nacional de Fronteras) guarding this region, including the habitat of the camouflaged harlequin frog. SENAFRONT has helped increase knowledge of the area’s wildlife by reporting sightings, recording sounds, and photographing observations.

Diagnosis: Medium-sized *Atelopus* (average SVL (mm): all 33.7±6.8 (24.2–50.1; *n*=50); females 43.8±4.1 (35.1–50.1; *n*=13); males 30.4±2.6 (24.2–34.8; *n*=37)) characterized by the following combination of characters: (1) body slender, snout protruding, with tip rounded; (2) neural spines weakly visible externally; (3) hindlimbs long, tibiotarsal articulation

reaching anterior corner of eye when leg is outstretched forward along body (average in males TIBL/SVL 0.47; *n*=37); (4) foot shorter than shank (average in males FTL/TIBL 0.81; *n*=31); (5) tympanic annulus and tympanic membrane absent; (6) dorsal parts of body and limbs smooth to slightly shagreen (visible under stereomicroscope); (7) foot webbing formula I0–0II0–2–III1–3+IV3+–1–V; (8) thumb short (average THBL/HAND 0.32; *n*=20); (9) plantar and palmar surfaces mostly smooth with subarticular tubercles poorly defined.

Description of holotype: Body slender; neural spines weakly visible externally; head longer than wide (HW/HL=0.94); head length 27% of SVL; snout protruding, with tip rounded, dorsally subelliptical; upper jaw extending beyond lower jaw; nostrils lateral, slightly visible from above; tongue twice as long as wide, anterior two-thirds attached to floor of mouth; canthus rostralis slightly concave from nostril to tip of snout, concave from eye to nostril; nostril closer to tip of snout than to eye; eye diameter slightly larger than distance from eye to nostril; tympanic annulus and tympanum not visible; supratympanic crests slightly visible; parotid glands small and barely visible;



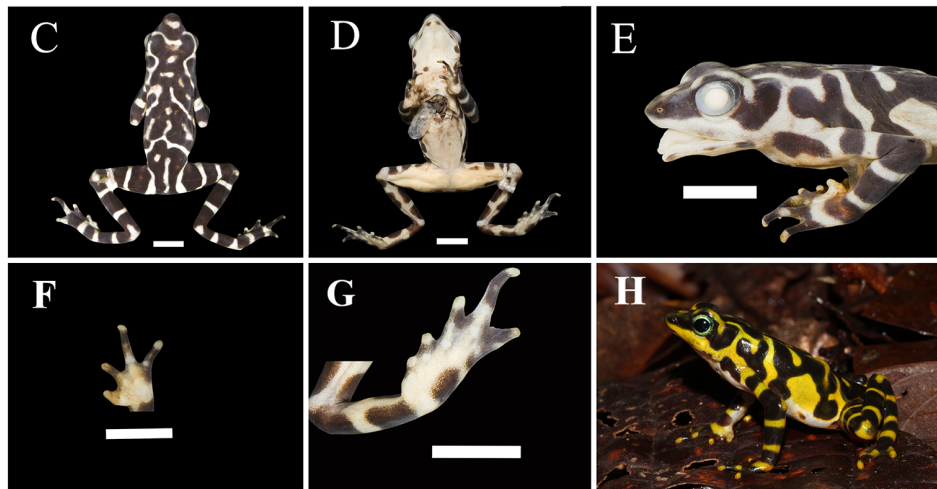
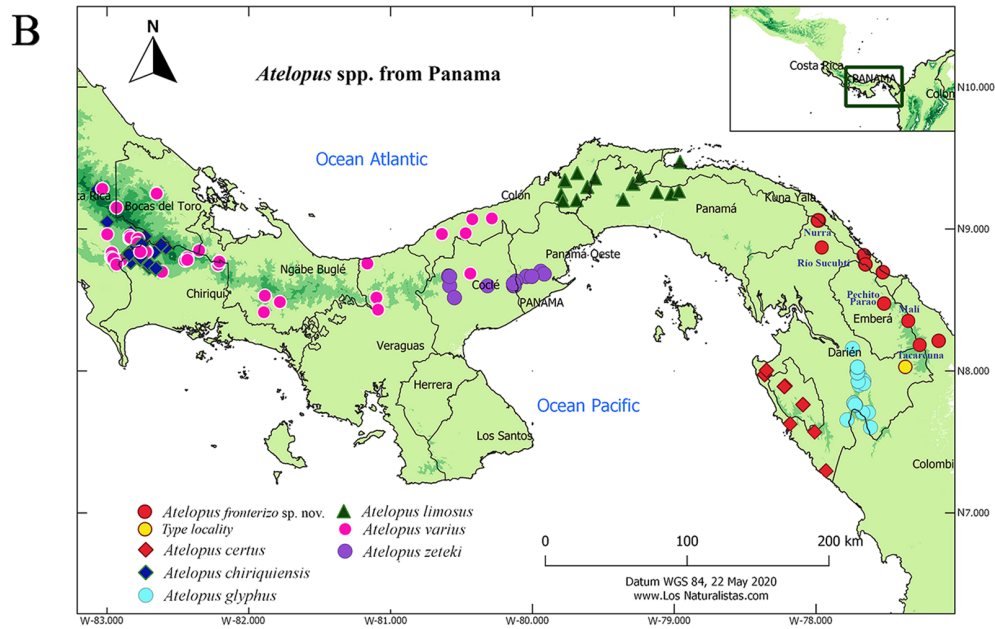


Figure 1 Molecular comparison and geographic distribution of Panamanian species of *Atelopus*, and main features of holotype of *Atelopus fronterizo* sp. nov.

A: Maximum-likelihood trees based on *COI* and 16S sequences of *Atelopus* species from Panamá. Colors of branches indicate bootstrap support, values >90 are marked on branches. B: Map of Panama showing distribution of *Atelopus* species occurring in the country; C: *Atelopus fronterizo* sp. nov. holotype (MHCH 3110), dorsal view of preserved specimen; D: Ventral view; E: Head laterally; F: Left hand; G: Left foot; H: Live holotype, from Púculo River (MHCH 3110); scale bars correspond to 5 mm. All photos were taken by Abel Batista, except for that of *A. zeteki*, taken by Emanuele Biggi.

vomers without teeth or odontoids; choanae rounded and broadly separated in between. Shank moderately long (TIBL/SVL=0.41); foot shorter than shank (FL/TIBL=0.85); relative length of toes I<II<III<V<IV; foot webbing formula 10–0II0–2–III1–3*IV3+–1~V; outer metatarsal tubercle round, weakly prominent; inner metatarsal tubercle poorly defined, oval, flattened, larger than outer; subarticular tubercles low and rounded. Forelimb long, slender; relative length of fingers I<II<IV<III; hand webbing formula 12–3~II3–4III4–3IV; outer palmar tubercle distinct, rounded, larger than oval inner; subarticular tubercles moderately marked and rounded; thumb moderately short, distance from tip to outer edge of inner

palmar tubercle less than length of tubercle (THBL/HAND=0.27). Skin of dorsal surfaces of body and limbs smooth, glandular and weakly rugose in texture (observed under stereomicroscope); ventral surfaces smooth.

Color in life: Dorsum pale yellow with irregular, well-defined, dark brown to almost black blotches, bars, and vermiculation (Figure 1H); upper surfaces of limbs yellow with broad dark olive bands; upper lip yellow, suffused slightly with dark pigmentation; lower lips with small dark olive blotches; throat, chest, and venter creamy white; lower venter and lower surfaces of thighs bright orange; remaining ventral parts of legs yellow with interrupted dark olive transverse bands,

extending from dorsal parts; palmar and plantar surfaces orange suffused with dark olive blotches; ventral color of arms white with dark olive transverse bands extending from dorsal surfaces; iris black, with narrow, pale green ring surrounding pupil, reticulated with dark color in external borders.

Color in preservative: Dorsal surfaces dirty white to pale gray, with irregular, well-defined, dark to almost black blotches, bars, and vermiculation; dark bars on exposed areas of limbs and flanks; throat, venter, ventral surfaces of thighs, and palmar and plantar surfaces cream; two tiny, round, dark brown blotches on chest, another on venter (around midlevel) on right side; edges of lower lip with small dark brown blotches; throat with two barely visible diffused dark brown blotches (Figure 1C–G).

Measurements (in mm): Holotype followed by range of males (holotype plus three male paratypes): SVL 29.5 (27.5–34.1); HL 8.5 (8.2–9.3); HW 8.0 (7.7–9.2); IND 2.6 (2.5–3.5); EYND 2.5 (2.3–3.0); EYDM 3.0 (2.5–3.4); TIBL 12.1 (12.1–15.7); FTL 10.3 (9.4–13.8); HAL 6.5 (6.5–8.5); THBL 1.8 (1.8–2.8).

Variation: Measurements and intraspecific variation of known populations are shown in Supplementary Table S4 (males) and Supplementary Table S5 (females). We identified two color morphs, i.e., Tacarcuna and Sucubti morphs. The Tacarcuna morph (Figure 1H) has a dark vermiculation pattern, which agrees well with the holotype description; this population is distributed around Cerro Tacarcuna southward to Colombia (Figure 1B). The Sucubti morph populations occur northwards of Cerro Tacarcuna, with most specimens having broader dark transverse bands on the dorsum compared with the Tacarcuna morph, often with a narrow (sometimes incomplete) light inverted chevron just anterior to the interorbital area, a light chevron across the mid-dorsum, and a light band across the postsacral region, with a definite elongated light area in the suprascapular region; these light blotches share a dorsal ground color, which can be yellow, pale green, or green (Supplementary Figure S5).

Call description: We recorded an *Atelopus fronterizo* sp. nov. male near Nurra on 3 October 2012, 0949 h, 25.5 °C (locality of paratype MHCH 2655). The male was calling towards another male sitting about 1 m away. The vocalization produced by the Sucubti morph consists of pulsed calls (buzz-like sounds) emitted at $2\,505.94 \pm 66.05$ Hz ($2\,422.5$ – $2\,605.5$; $n=8$), with a call duration of 209.75 ± 20.25 ms (176 – 235 ; $n=8$), pulses of 28.0 ± 5.48 (19 – 34 , $n=7$), and pulse rate of 131.69 ± 16.39 pulses/s (97.44 – 144.68 ; $n=7$; Supplementary Table S6). In the recording, we identified three call bouts, with four, five, and eight calls, respectively. A male recorded by C. Myers in 1967 emitted partially pulsed short calls with a downward modulated frequency (Cocroft et al., 1990: Figure 4K–L). That call demonstrated a dominant frequency in the same range as the call recorded by our male but was substantially shorter (~55% of the duration of normal advertisement pulse call recorded in our study). An oscillogram and spectrogram of the *Atelopus fronterizo* sp. nov. advertisement call are presented in Supplementary Figure S6.

Distribution and natural history: *Atelopus fronterizo* sp. nov. occurs in the Darien Mountain range in northeastern Panama and northwestern Colombia (Figure 1B), as well as in

the eastern Panamanian montane forests (World Wildlife Fund, 2014) and Chocó-Darién moist forests (Hogan & World Wildlife Fund, 2014). Most specimens were active during the daytime along small streams, although the holotype was found along the moderately sized Púculo River (Supplementary Figure S7). We encountered three specimens at night at Cerro Pechito Parao (ca. 1–2 km from the Tuquesa River, Bajo Pequeño), sleeping approximately 20–30 cm above the ground in low bushes and far from any stream or river. On the Caribbean side of Nurra, we found 22 individuals during a nighttime search along a 200 m transect following a stream. The next day, we also recorded one calling male and observed one amplexant pair. Several males were observed to use forelimb waving signals during visual interactions with other individuals.

Conservation status: Due to the current declines in *Atelopus* populations caused by the chytrid fungus *Batrachochytrium dendrobatidis* (Flechas et al., 2017b; La Marca et al., 2005; Lewis et al., 2019), we argue that *Atelopus fronterizo* sp. nov. should be included in the Critically Endangered category (A3ce), as also suggested by Lewis et al. (2019). *Atelopus fronterizo* sp. nov. faces the same risks of decimation and potential extinction as other *Atelopus* species that occur in eastern Panama.

Similar species: *Atelopus fronterizo* sp. nov. can be differentiated from other species of *Atelopus* occurring in the Panamanian region and adjacent areas of Colombia by a combination of the following characters: dorsal coloration showing irregular, dark brown bands and blotches on green or yellow background (Figure 1H; Supplementary Figure S5); phalangeal reduction in thumb; larger sized females (SVL); and characteristic advertisement calls. The advertisement call oscillogram of *Atelopus fronterizo* sp. nov. is easily distinguishable from those of Panamanian congeners by the envelope shape of the call, where the fall time ends abruptly compared to other species in the region (Supplementary Figure S6). From its geographically closest congeners (*A. certus*, *A. glyphus*), the new species differs in molecular genetics, with K2P genetic divergences of >2.6% for 16S and >4.9% for COI (Table 1). Additionally, *Atelopus fronterizo* sp. nov. can be distinguished by the following characters (contrasting features for the new species in parentheses (see Supplementary Tables S4–S6 and Supplementary Figure S8)). *Atelopus certus*: coloration in life brick red with black spots (vs. pale green or yellow with dark olive irregular vermiculations or transversal bars), head almost as broad as long HL/HW 1.03 ± 0.09 (vs. slightly broader HL/HW 0.94 ± 0.06), shorter shank length TIBL = 13.1 ± 0.71 mm (vs. 17.1 ± 3.7 mm), longer thumb in proportion to SVL 0.10 ± 0.01 (vs. 0.08 ± 0.01); longer call duration 0.30 ± 0.046 ms (vs. 0.21 ± 0.02 ms), with higher number of pulses per call 38.5 ± 6.75 (vs. 27.5 ± 5.82), and broader bandwidth 710.4 ± 195.9 Hz (vs. 318.6 ± 254.4 Hz). *Atelopus glyphus*: smaller in size, females 38.7 ± 3.7 mm, $n=10$; males 26.5 ± 3.5 mm, $n=124$ (vs. females 43.8 ± 4.1 mm; males 30.4 ± 2.6 mm); head as broad as long HL/HW 1.01 ± 0.05 (vs. slightly broader HL/HW 0.94 ± 0.06), shorter shank length TIBL 14.9 ± 2.56 mm (vs. 17.07 ± 3.7 mm); longer call duration 0.25 ± 0.013 ms (vs. 0.21 ± 0.02 ms), higher number of pulses

per call 35.1 ± 2.77 (vs. 27.5 ± 5.82), and broader bandwidth 623.2 ± 50.1 Hz (vs. 318.6 ± 254.4 Hz). *Atelopus limosus*: dorsal ground color dark brown, black, or solid olive with variable bright green markings (vs. pale green or yellow with dark olive irregular reticulations or bars), smaller size, females 36.2 ± 0.8 mm, $n=5$; males 26.3 ± 2.5 mm, $n=22$ (vs. females 43.8 ± 4.1 mm, males 30.4 ± 2.6 mm), higher call pulse rate (pulses/s) 151.6 ± 3.1 (vs. 131.69 ± 16.39), and maximum frequency $2\ 689 \pm 93$ Hz (vs. $2\ 505.94 \pm 66.05$ Hz). *Atelopus spurrelli*: smaller size, females 30–34 mm, males 26 mm (Rivera-Correa, 2005) (vs. females 43.8 ± 4.1 mm, males 30.4 ± 2.6 mm). *Atelopus varius*: dorsal color highly variable, mostly black or chocolate brown with yellow or red bands and blotches (vs. pale yellow or green yellow with dark olive irregular blotches or bands), longer call duration 413–431 ms (vs. 176–235 ms), and more pulses per call 48–50 (vs. 19–34). *Atelopus zeteki*: in life dorsal color uniformly golden yellow, usually with black bands or blotches (vs. pale yellow or green yellow with dark olive irregular reticulations or bands).

Remarks: Many species in the genus *Atelopus* are convergent in color, shading, and pattern. When coupled with high (but poorly understood) intraspecific variation and cryptic species diversity, this renders species delimitation through morphological characters alone particularly challenging (Coloma et al., 2000; De la Riva et al., 2011; Guayasamin et al., 2010). This likely prevented earlier recognition and description of *Atelopus fronterizo sp. nov.* by other herpetologists. As outlined above, the identity of this species has raised taxonomic doubts for more than a century, and has been repeatedly confused with *A. limosus*, *A. glyphus* and *A. spurrelli* (Flechas et al., 2017a; Rivera-Correa, 2005; <https://www.inaturalist.org/>, accessed on 19 January 2021).

Our molecular analysis relied on comparisons of two genetic markers, 16S and *COI*, which are consistently used across systematic studies of amphibians (e.g., Acosta-Galvis et al., 2020; Batista et al., 2014a, 2014b, 2014c; Chambers & Hebert, 2016; Jorge et al., 2020; Lötters et al., 2011; Nagy et al., 2012; Vieites et al., 2009). The K2P genetic distance of *Atelopus fronterizo sp. nov.* to its genetically closest neighbors, *A. certus* and *A. glyphus*, is slightly smaller than the commonly accepted threshold for these markers in amphibians (i.e., 2.6%/2.6% for 16S and 4.9%/5.2% for *COI*). Nevertheless, the morphologically distinct and widely accepted species *A. glyphus* and *A. certus* show even lower distances between each other (minimum K2P distance 1.5% in 16S and 2.4% in *COI*) and low distances have also been reported between other *Atelopus* species in Panama (Lewis et al., 2019; Table 1). Other morphologically similar species, which extend, at least partly, to the Darién/Chocó border area between Panama and Colombia (*A. limosus*, *A. spurrelli*), are genetically much more distinct (Table 1).

Bioacoustic signals are still poorly studied in *Atelopus*. Four call types (pulsed calls, pure tone calls, pulsed short calls, and pure tone short calls) are currently recognized within the genus (Lötters et al., 2019). The advertisement call pattern of *Atelopus fronterizo sp. nov.* resembles that of other *Atelopus* species from Panama in having a pulsed call and pulsed short call (Cocroft et al., 1990; Ibáñez et al., 1995; Jaslow, 1979; Lewis et al., 2019, this study). Pure tone calls and pure tone

short calls have not yet been recorded for *Atelopus fronterizo sp. nov.*, but the former is present in *A. chiriquiensis* (Jaslow, 1979) and the latter is present in *A. zeteki* (Cocroft et al., 1990; Lötters et al., 2019). Calls by *Atelopus fronterizo sp. nov.* remain well differentiated from those of other *Atelopus* species in eastern Panama after temperature correction (Supplementary Table S6; Supplementary Figure S6).

The observed *Atelopus fronterizo sp. nov.* populations were not affected by the chytrid fungus. Likewise, Flechas et al. (2017a) did not find *B. dendrobatidis* in swab samples from wild populations in Capurganá, Colombia. Although the current situation may be different due to the rapid spread of the pathogen in Panama over the last two decades (Crawford et al., 2010; Lewis et al., 2019; Lips et al., 2006), there is evidence that some species can, at least partially, resist *B. dendrobatidis* with the help of anti-*B. dendrobatidis* activity from symbiotic skin bacteria. Such effects have been shown for skin bacteria in *Atelopus fronterizo sp. nov.* (Flechas et al., 2017a).

With the immediate need for protection of the vulnerable genus *Atelopus* (La Marca, 2005; Ramírez et al., 2020; Zippel et al., 2006), we appeal for an urgent conservation plan for *Atelopus fronterizo sp. nov.*, including captive breeding programs and subsequent establishment of a founder population (Lewis et al., 2019). Conservation efforts for *Atelopus fronterizo sp. nov.* may serve to protect biodiversity in the borderland jungle and help to secure the future of this and other yet to be recognized species in the Darién Gap.

Nomenclatural acts registration

The electronic version of this article in portable document format represents a published work according to the International Commission on Zoological Nomenclature (ICZN), and hence the new names contained in the electronic version are effectively published under that Code from the electronic edition alone (see Articles 8.5–8.6 of the Code). This published work and the nomenclatural acts it contains have been registered in ZooBank, the online registration system for the ICZN. The ZooBank LSIDs (Life Science Identifiers) can be resolved and the associated information can be viewed through any standard web browser by appending the LSID to the prefix <http://zoobank.org/>.

Publication LSID: urn:lsid:zoobank.org:pub:06959E87-EE29-44BD-AA0A-43BE0CCE0183

Atelopus fronterizo LSID:

urn:lsid:zoobank.org:act:0DCD680B-2D5B-4EFF-8831-F6F07A0B7F21

SCIENTIFIC FIELD SURVEY PERMISSION INFORMATION

Collection permits 2011 (SC/A-37-11) and 2012 (SC/A-93633-12) and exportation permits 2012 (SC/A-33-12) and 2013 (SEX/A-7-13) were provided by UNARGEN-Ministerio de Ambiente, Panama.

SUPPLEMENTARY DATA

Supplementary data to this article can be found online.

COMPETING INTERESTS

The authors declare that they have no competing interests.

AUTHORS' CONTRIBUTIONS

M.V. and A.B. designed the study. Both authors equally participated in all aspects of the study, including fieldwork, morphometry, and molecular genetics, and wrote the manuscript. A.B. performed bioacoustic analysis. M.V. finalized molecular genetic outputs (trees and haplotype networks) and submitted sequences to GenBank. M.V. and A.B. revised the manuscript. Both authors read and approved the final version of the manuscript.

ACKNOWLEDGEMENTS

We thank Yorlis Cáceres, Daniel Cáceres, Isaac Pizarro, Gustavo Dogirama, Mario Cuñapa, Anselmo Caicedo, Hugo Martínez, Elacio Méndez, Gilberto Torres, and the people from Bajo Pequeño for field assistance. Michal Motyka and Dominik Kusý kindly helped with molecular data processing; Madian Miranda helped with photography and creating the appendix figures of preserved specimens from the American Museum of Natural History (AMNH). David Kizirian kindly allowed revision of the specimens at the AMNH. We also thank Dennis Voeten, Taylor Cooper, and Joseph Mendelson III for language assistance.

Milan Veselý¹, Abel Batista^{2,3,4,*}

¹ Department of Zoology, Faculty of Natural Sciences, Palacký University, Olomouc 77146, Czech Republic

² Universidad Autónoma de Chiriquí, Ciudad Universitaria El Cabrero David, Chiriquí 427, Panamá

³ Asociación ADOPTA el Bosque Panamá, Gamboa 119x, Panamá

⁴ Fundación Los Naturalistas, David, Chiriquí 426-01459, Panamá

*Corresponding author, abel.batista@unachi.ac.pa

REFERENCES

- Acosta-Galvis AR, Saldarriaga-Gómez AM, Ramírez B, Vargas-Ramírez M. 2020. A new Terrarana frog of genus *Pristimantis* from an unexplored cloud forest from the eastern Andes, Colombia. *ZooKeys*, **961**: 129–156.
- AmphibiaWeb. 2020[2020-10-14]. Berkeley, CA, USA: University of California, <https://amphibiaweb.org>.
- Barbour T. 1923. Notes on reptiles and amphibians from Panama. Occasional Papers, 129. Michigan: University of Michigan, 1–16.
- Batista A, Hertz A, Köhler G, Mebert K, Veselý M. 2014a. Morphological variation and phylogeography of frogs related to *Pristimantis caryophyllaceus* (Anura: Terrarana: Craugastoridae) in Panama. *Salamandra*, **50**(3): 155–171.
- Batista A, Hertz A, Mebert K, Köhler G, Lotzkat S, Ponce M, et al. 2014b. Two new fringe-limbed frogs of the genus *Ecnomiophyla* (Anura: Hylidae) from Panama. *Zootaxa*, **3826**(3): 449–474.
- Batista A, Köhler G, Mebert K, Hertz A, Veselý M. 2016. An integrative approach to reveal speciation and species richness in the genus *Diasporus* (Amphibia: Anura: Eleutherodactylidae) in eastern Panama. *Zoological Journal of the Linnean Society*, **178**(2): 267–311.
- Batista A, Köhler G, Mebert K, Veselý M. 2014c. A new species of *Bolitoglossa* (Amphibia: Plethodontidae) from eastern Panama, with comments on other species of the *adspersa* species group from eastern Panama. *Mesoamerican Herpetology*, **1**(1): 97–121.
- Bravo-Valencia L, Rivera-Correa M. 2011. A new species of harlequin frog (Bufonidae: *Atelopus*) with an unusual behavior from Andes of Colombia. *Zootaxa*, **3045**(1): 57–67.
- Breder CM. 1946. Amphibians and reptiles of the Rio Chucunaque drainage, Darién, Panamá, with notes on their life histories and habits. *Bulletin of the American Museum of Natural History*, **86**(8): 375–436.
- Chambers EA, Hebert PD. 2016. Assessing DNA barcodes for species identification in North American reptiles and amphibians in natural history collections. *PLoS One*, **11**(4): e0154363.
- Cocroft RB, McDiarmid RW, Jaslow AP, Ruiz-Carranza PM. 1990. Vocalizations of eight species of *Atelopus* (Anura: Bufonidae) with comments on communication in the genus. *Copeia*, **1990**(3): 631–643.
- Coloma LA, Lötters S, Salas AW. 2000. Taxonomy of the *Atelopus ignescens* complex (Anura: Bufonidae): designation of a neotype of *Atelopus ignescens* and recognition of *Atelopus exiguus*. *Herpetologica*, **56**(3): 303–324.
- Crawford AJ, Lips KR, Bermingham E. 2010. Epidemic disease decimates amphibian abundance, species diversity, and evolutionary history in the highlands of central Panama. *Proceedings of the National Academy of Sciences of the United States of America*, **107**(31): 13777–13782.
- De la Riva I, Castroviejo-Fisher S, Chaparro JC, Boistel R, Padial JM. 2011. A new species of *Atelopus* (Anura: Bufonidae) from the Amazonian slopes of the Andes in south-eastern Peru. *Salamandra*, **47**(3): 161–168.
- Dunn ER. 1931. New frogs from Panama and Costa Rica. *Occasional papers of the Boston Society of Natural History*, **5**: 385–401.
- Dunn ER. 1933. Amphibians and reptiles from El Valle de Antón, Panamá. *Occasional Papers of the Boston Society of Natural History*, **8**: 65–79.
- Flechas SV, Blasco-Zúñiga A, Merino-Viteri A, Ramírez-Castañeda V, Rivera M, Amézquita A. 2017a. The effect of captivity on the skin microbial symbionts in three *Atelopus* species from the lowlands of Colombia and Ecuador. *PeerJ*, **5**: e3594.
- Flechas SV, Paz A, Crawford AJ, Sarmiento C, Acevedo AA, Arboleda A, et al. 2017b. Current and predicted distribution of the pathogenic fungus *Batrachochytrium dendrobatidis* in Colombia, a hotspot of amphibian biodiversity. *Biotropica*, **49**(5): 685–694.
- Frost D. 2020[2020-09-20]. Amphibian species of the world 6.1, an online reference. <https://amphibiansoftheworld.amnh.org/index.php>.
- Guayasamin JM, Bonaccorso E, Duellman WE, Coloma LA. 2010. Genetic differentiation in the nearly extinct harlequin frogs (Bufonidae: *Atelopus*), with emphasis on the Andean *Atelopus ignescens* and *A. bomolochos* species complexes. *Zootaxa*, **2574**(1): 55–68.
- Heckadon-Moreno S. 1996. Estudios Botánicos y etnográficos de Henri Pittier en la costa de San Blas y Puerto Obaldía – 1911. *Épocas: Segunda Era*, **11**(10): 10–11.
- Hogan CM, World Wildlife Fund. 2014[2020-05-25]. Chocó-Darién moist forests. http://editors.eol.org/eoearth/wiki/Chocó-Darién_moist_forests.
- Ibáñez DR, Jaramillo CA, Solís FA. 1995. Una especie nueva de *Atelopus* (Amphibia: Bufonidae) de Panamá. *Caribbean Journal of Science*, **31**(1–2): 57–64.
- Jaslow AP. 1979. Vocalization and aggression in *Atelopus chiriquiensis* (Amphibia, Anura, Bufonidae). *Journal of Herpetology*, **13**(2): 141–145.
- Jorge RF, Ferrão M, Lima AP. 2020. Out of Bound: A new threatened harlequin toad (Bufonidae, *Atelopus*) from the outer borders of the Guiana shield in Central Amazonia described through integrative taxonomy. *Diversity*, **12**(8): 310.

- Kimura M. 1980. A simple method for estimating evolutionary rates of base substitutions through comparative studies of nucleotide sequences. *Journal of Molecular Evolution*, **16**(2): 111–120.
- La Marca E, Lips KR, Lötters S, Puschendorf R, Ibáñez R, Rueda-Almonacid JV, et al. 2005. Catastrophic population declines and extinctions in Neotropical harlequin frogs (Bufonidae: *Atelopus*). *Biotropica*, **37**(2): 190–201.
- Lewis CHR, Richards-Zawacki CL, Ibáñez R, Luedtke J, Voyles J, Houser P, et al. 2019. Conserving Panamanian harlequin frogs by integrating captive-breeding and research programs. *Biological Conservation*, **236**: 180–187.
- Lichtenstein H, von Martens E. 1856. Nomenclator Reptilium et Amphibiorum Musei Zoologici Berolinensis. Namenverzeichniss der in der zoologischen Sammlung der Königlichen Universität zu Berlin aufgestellten Arten von Reptilien und Amphibien nach ihren Ordnungen, Familien und Gattungen. Berlin: Königliche Akademie der Wissenschaften.
- Lips KR, Brem F, Brenes R, Reeve JD, Alford RA, Voyles J, et al. 2006. Emerging infectious disease and the loss of biodiversity in a Neotropical amphibian community. *Proceedings of the National Academy of Sciences of the United States of America*, **103**(9): 3165–3170.
- Lötters S. 1996. The Neotropical Toad Genus *Atelopus*. Checklist—Biology—Distribution. Cologne: Vences and Glaw Verlags GbR.
- Lötters S, Mebs D, Köhler G, Vargas J, La Marca E. 2019. The voice from the hereafter: vocalisations in three species of *Atelopus* from the Venezuelan Andes, likely to be extinct. *Herpetozoa*, **32**: 267–275.
- Lötters S, van der Meijden A, Coloma LA, Boistel R, Cloetens P, Ernst R, et al. 2011. Assessing the molecular phylogeny of a near extinct group of vertebrates: the Neotropical harlequin frogs (Bufonidae; *Atelopus*). *Systematics and Biodiversity*, **9**(1): 45–57.
- Myers CW, Duellman WE. 1982. A new species of *Hyla* from Cerro Colorado, and other tree frog records and geographical notes from western Panama. *American Museum Novitates*, **2752**: 1–32.
- Nagy ZT, Sonet G, Glaw F, Vences M. 2012. First large - scale DNA barcoding assessment of reptiles in the biodiversity hotspot of Madagascar, based on newly designed COI primers. *PLoS One*, **7**(3): e34506.
- OSM Contributors. 2015[2019-02-25]. <https://planet.openstreetmap.org>
- Ramírez JR, Jaramillo CA, Lindquist ED, Crawford AJ, Ibáñez R. 2020. Recent and rapid radiation of the highly endangered Harlequin frogs (*Atelopus*) into Central America inferred from mitochondrial DNA sequences. *Diversity*, **12**(9): 360.
- Rivera-Correa M. 2005. *Atelopus spurrelli*. In: Rueda-Almonacid JV, Rodríguez-Mahecha JV, La Marca E, Lötters S, Kahn T, Angulo A. *Ranas Arlequines*. Bogotá. Conservación Internacional, 158.
- Sabaj MH. 2016(2016-08-16). Standard symbolic codes for institutional resource collections in herpetology and ichthyology: an online reference. Version 6.5. Washington, DC: American Society of Ichthyologists and Herpetologists. <http://www.asih.org/>.
- Savage JM. 1972. The harlequin frogs, genus *Atelopus*, of Costa Rica and western Panama. *Herpetologica*, **28**(2): 77–94.
- Savage JM. 2002. *The Amphibians and Reptiles of Costa Rica: A Herpetofauna between Two Continents, between Two Seas*. Chicago: The University of Chicago Press.
- Savage JM, Heyer WR. 1997. Digital webbing formulae for anurans: a refinement. *Herpetological Review*, **28**(3): 131.
- Shreve B. 1936. A new *Atelopus* from Panama and a new *Hemidactylus* from Colombia. *Occasional Papers of the Boston Society of Natural History*, **8**: 269–272.
- Vieites DR, Wollenberg KC, Andreone F, Köhler J, Glaw F, Vences M. 2009. Vast underestimation of Madagascar's biodiversity evidenced by an integrative amphibian inventory. *Proceedings of the National Academy of Sciences of the United States of America*, **106**(20): 8267–8272.
- World Wildlife Fund. 2014(2014-05-14)[2020-05-25]. Eastern Panamanian montane forests. http://editors.eol.org/eoearth/wiki/Eastern_Panamanian_montane_forests.
- Zippel KC, Ibáñez R, Lindquist ED, Richards CL, Jaramillo CA, Griffith EJ. 2006. Implicaciones en la conservación de las ranas doradas de Panamá, asociadas con su revisión taxonómica. *Herpetotropicos*, **3**(1): 29–39.