

CORRECTION

Open Access



Correction to: Systematic analyses reveal long non-coding RNA (PTAF)-mediated promotion of EMT and invasion-metastasis in serous ovarian cancer

Haihai Liang^{1†}, Xiaoguang Zhao^{1†}, Chengyu Wang^{2†}, Jian Sun¹, Yingzhun Chen³, Guoyuan Wang⁴, Lei Fang⁵, Rui Yang¹, Mengxue Yu¹, Yunyan Gu^{6,7*} and Hongli Shan^{1*}

Correction to: Mol Cancer 17, 96 (2018)
<https://doi.org/10.1186/s12943-018-0844-7>

Following the publication of the original paper [1], the authors found an inter-duplication in Fig. 3d and a misplacement in Fig. 6e and herein make corrections of these errors. First, the “Wound-healing Assay” image of “Ctrl of 24h in A2780 cells” in Fig. 3d contained an inter-duplication with the image of “NC of 24h in A2780 cells” in Fig. 2d. Second, the images in Fig. 6b for the “PTAF+miR-25a” group, in Fig. 6c for “pcDNA3.1” and in Fig. 6f for “TGF- β 1 + sh-Scramble” were mistakenly presented in Fig. 6e. Our careful double-check of the original images clarified that this mistake was caused by an unintentional overlay of the images for Fig. 6b, Fig. 6c and Fig. 6f on top of the correct images for Fig. 6e during figure preparation. These mistakes have now been corrected in the revised version of Fig. 3d and Fig. 6e.

The corrections do not affect the original findings and conclusions of the article. The authors apologize for any inconvenience caused by the unintentional mistakes.

Corrected figures are provided below.

Author details

¹Department of Pharmacology (State-Province Key Laboratories of Biomedicine-Pharmaceutics of China, Key Laboratory of Cardiovascular Research, Ministry of Education), College of Pharmacy, Harbin Medical University, Translational Medicine Research and Cooperation Center of Northern China, Heilongjiang Academy of Medical Sciences, Harbin 150081, China. ²Department of Systems Biology, College of Bioinformatics Science and Technology, Harbin Medical University, Harbin 150001, China. ³Department of Pathology of The Second Affiliated Hospital, Harbin Medical University, Harbin 150081, China. ⁴Department of Pathology of The First Affiliated Hospital, Harbin Medical University, Harbin 150081, China. ⁵Department of Obstetrics and Gynecology, The Second Affiliated Hospital of Harbin Medical University, Harbin 150081, China. ⁶Department of Systems Biology, College of Bioinformatics Science and Technology, Harbin Medical University, Harbin 150086, China. ⁷Training Center for Students Innovation and Entrepreneurship Education, Harbin Medical University, Harbin 150086, China.

Published online: 29 December 2020

Reference

1. Liang H, Zhao X, Wang C, et al. Systematic analyses reveal long non-coding RNA (PTAF)-mediated promotion of EMT and invasion-metastasis in serous ovarian cancer. *Mol Cancer*. 2018;17:96 <https://doi.org/10.1186/s12943-018-0844-7>.

The original article can be found online at <https://doi.org/10.1186/s12943-018-0844-7>.

* Correspondence: guyunyan@ems.hrbmu.edu.cn; shanhongli@ems.hrbmu.edu.cn

[†]Haihai Liang, Xiaoguang Zhao and Chengyu Wang contributed equally to this work.

⁶Department of Systems Biology, College of Bioinformatics Science and Technology, Harbin Medical University, Harbin 150086, China

¹Department of Pharmacology (State-Province Key Laboratories of Biomedicine-Pharmaceutics of China, Key Laboratory of Cardiovascular Research, Ministry of Education), College of Pharmacy, Harbin Medical University, Translational Medicine Research and Cooperation Center of Northern China, Heilongjiang Academy of Medical Sciences, Harbin 150081, China

Full list of author information is available at the end of the article



© The Author(s). 2020 **Open Access** This article is licensed under a Creative Commons Attribution 4.0 International License, which permits use, sharing, adaptation, distribution and reproduction in any medium or format, as long as you give appropriate credit to the original author(s) and the source, provide a link to the Creative Commons licence, and indicate if changes were made. The images or other third party material in this article are included in the article's Creative Commons licence, unless indicated otherwise in a credit line to the material. If material is not included in the article's Creative Commons licence and your intended use is not permitted by statutory regulation or exceeds the permitted use, you will need to obtain permission directly from the copyright holder. To view a copy of this licence, visit <http://creativecommons.org/licenses/by/4.0/>. The Creative Commons Public Domain Dedication waiver (<http://creativecommons.org/publicdomain/zero/1.0/>) applies to the data made available in this article, unless otherwise stated in a credit line to the data.

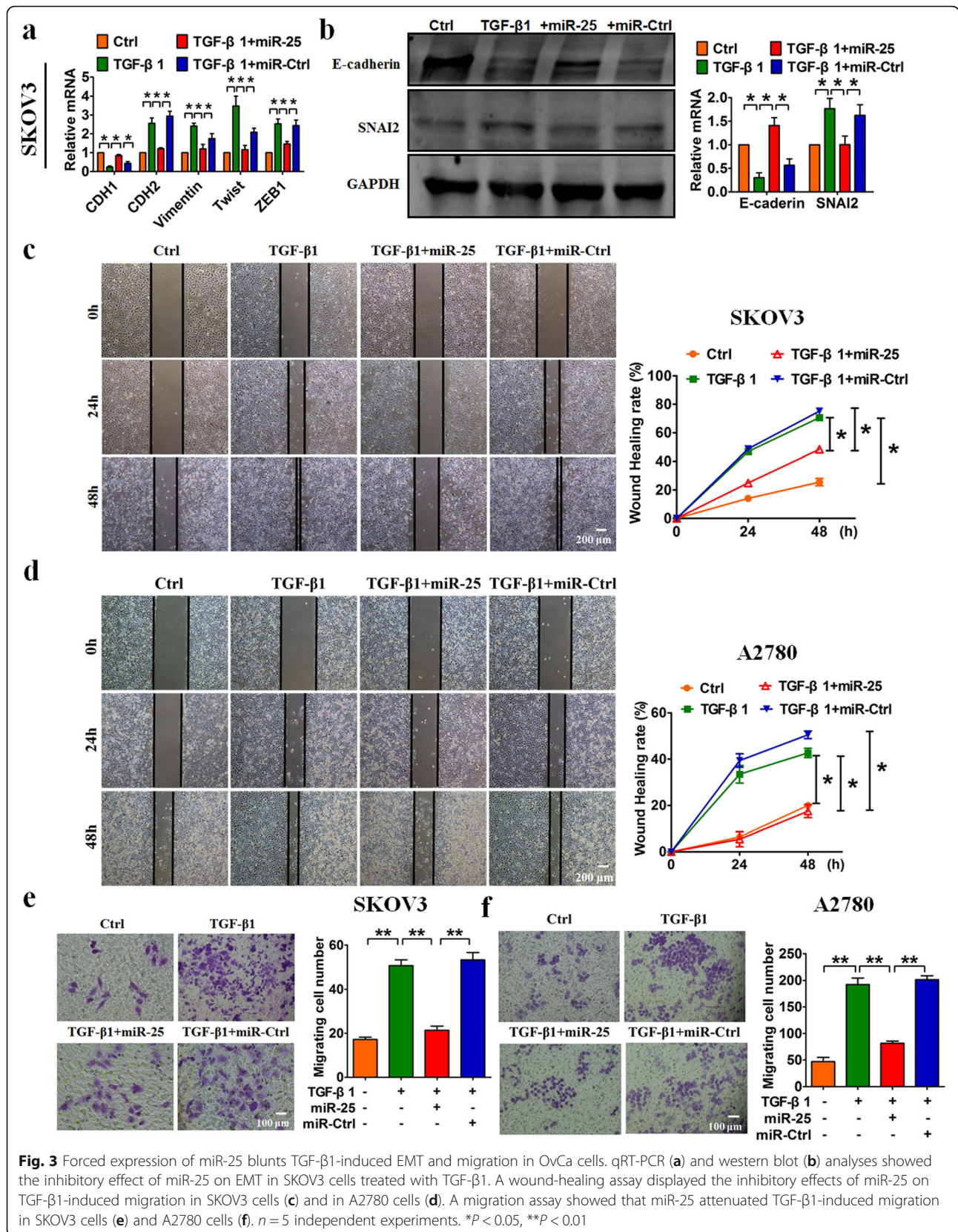


Fig. 3 Forced expression of miR-25 blunts TGF-β1-induced EMT and migration in OvCa cells. qRT-PCR (a) and western blot (b) analyses showed the inhibitory effect of miR-25 on EMT in SKOV3 cells treated with TGF-β1. A wound-healing assay displayed the inhibitory effects of miR-25 on TGF-β1-induced migration in SKOV3 cells (c) and in A2780 cells (d). A migration assay showed that miR-25 attenuated TGF-β1-induced migration in SKOV3 cells (e) and A2780 cells (f). *n* = 5 independent experiments. **P* < 0.05, ***P* < 0.01

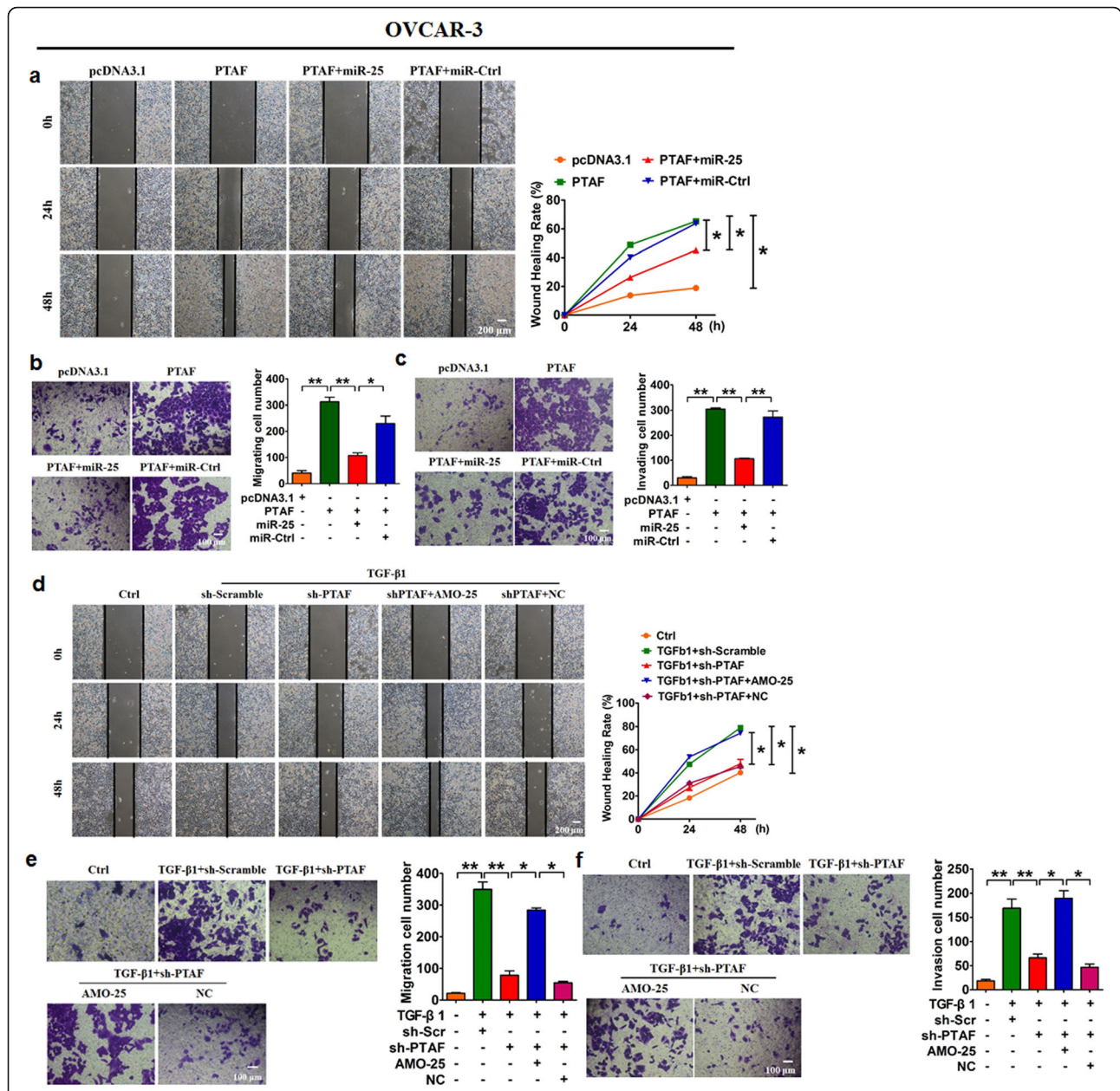


Fig. 6 PTAF overexpression leads to OVCAR-3 cell migration and invasion by regulating miR-25. Wound-healing **a** and migration assays **b** showed that PTAF promoted OVCAR-3 cell migration, which was inhibited by forced expression of miR-25. $n = 5$ independent experiments. $*P < 0.05$, $**P < 0.01$. **c** A Transwell invasion assay showed that PTAF promoted OVCAR-3 cell invasion by regulating miR-25. $n = 5$ independent experiments. $**P < 0.01$. Wound-healing **d** and migration assays **e** showed that silencing of PTAF inhibited TGF- β 1-driven migration in OVCAR-3 cells, which was abated by miR-25 knockdown. $n = 5$ independent experiments. $*P < 0.05$, $**P < 0.01$. **f** A Transwell invasion assay showed that knockdown of PTAF inhibited TGF- β 1-induced OVCAR-3 cell invasion. $n = 5$ independent experiments. $*P < 0.05$, $**P < 0.01$