



# Roles of Autotaxin/Autotaxin-Lysophosphatidic Acid Axis in the Initiation and Progression of Liver Cancer

Sha She<sup>†</sup>, Qian Zhang<sup>†</sup>, Jinzhi Shi, Fan Yang\* and Kai Dai\*

Department of Infectious Diseases, Renmin Hospital of Wuhan University, Wuhan, China

## OPEN ACCESS

### Edited by:

Wen-Lung Ma,  
China Medical University, Taiwan

### Reviewed by:

Herryawan Ryadi Eziwar Dyari,  
National University of Malaysia,  
Malaysia

### \*Correspondence:

Fan Yang  
yangfanwhu2012@163.com  
Kai Dai  
daikai@whu.edu.cn

<sup>†</sup>These authors have contributed  
equally to this work and share  
first authorship

### Specialty section:

This article was submitted to  
Gastrointestinal Cancers: Hepato  
Pancreatic Biliary Cancers,  
a section of the journal  
Frontiers in Oncology

Received: 18 April 2022

Accepted: 13 May 2022

Published: 13 June 2022

### Citation:

She S, Zhang Q, Shi J,  
Yang F and Dai K (2022)  
Roles of Autotaxin/Autotaxin-  
Lysophosphatidic Acid  
Axis in the Initiation and  
Progression of Liver Cancer.  
Front. Oncol. 12:922945.  
doi: 10.3389/fonc.2022.922945

Autotaxin (ATX) is a secreted glycoprotein and catalyzes the hydrolysis of lysophosphatidylcholine to lysophosphatidic acid (LPA), a growth factor-like signaling phospholipid. ATX has been abundantly detected in the culture medium of various cancer cells, tumor tissues, and serum or plasma of cancer patients. Biological actions of ATX are mediated by LPA. The ATX-LPA axis mediates a plethora of activities, such as cell proliferation, survival, migration, angiogenesis, and inflammation, and participates in the regulation of various physiological and pathological processes. In this review, we have summarized the physiological function of ATX and the ATX-LPA axis in liver cancer, analyzed the role of the ATX-LPA axis in tumorigenesis and metastasis, and discussed the therapeutic strategies targeting the ATX-LPA axis, paving the way for new therapeutic developments.

**Keywords:** autotaxin, lysophosphatidic acid, tumorigenesis, metastasis, liver cancer

## INTRODUCTION

Globally, liver cancer remains a serious health challenge, with an estimated future incidence of > 1 million cases by 2025; moreover, hepatocellular carcinoma (HCC) is the dominant type of liver cancer, accounting for approximately 90% of cases (1). HCC often arises from cirrhosis and is closely related to chronic liver diseases (2). Although surgical resection and liver transplantation may be effective treatments in early liver cancer, most patients are diagnosed at an advanced stage and generally respond poorly to current treatment options. The 5-year overall survival for unresectable HCC is less than 10% (3). According to international oncologic guidelines, sorafenib can be used as first-line treatment in patients with advanced HCC. Unfortunately, it prolongs life expectancy by only a few months, with frequent primary or secondary resistance developing (3, 4). HCC is a complex disease, with multiple molecules and signaling pathways affecting its pathogenesis. More data on the pathogenesis of HCC are required in order to develop new and more effective therapies to improve the survival of HCC patients.

Autotaxin (ATX) is a member of the family of nucleotide pyrophosphatases/phosphodiesterases and is also known as ENPP2. Secreted ATX acts as a lysophospholipase D (LPD), converting extracellular lysophosphatidylcholine (LPC) into lysophosphatidic acid (LPA). Many studies have confirmed that ATX is implicated in various physiological processes and pathological conditions, including cancer (5, 6). For instance, ATX is highly expressed in different kinds of cancers, such as

glioblastoma (7), melanoma (8), liver cancer (9), and renal cancer (10). Overexpression of ATX promotes the migration, invasion, and proliferation of cancer cells. Recent studies have shown that most of the biological functions of ATX are attributed to LPA (11). Indeed, ATX has been determined to act as the “gatekeeper” to control LPA signaling through LPA receptors. The ATX-LPA axis is involved in many physiological processes, including embryonic development, angiogenesis, and preadipocyte differentiation (5).

LPA is a small glycerol-phospholipid derived from membrane phospholipids and consists of a fatty acid chain and glycerol backbone. It is involved in a wide range of physiological and pathological responses, including cell proliferation, motility, differentiation, metabolism, excitability, and cell death (12). LPA binds to at least six G protein-coupled receptors (namely LPAR1-6) to stimulate activation of the ATX-LPA signaling pathway and participates in the regulation of tumor occurrence, progression, and metastasis (12, 13). And mounting studies have shown that the ATX-LPA axis can be targeted as an adjuvant for cancer therapy (14).

In recent years, more and more evidence has led to revelations about the key roles of the ATX-LPA axis in HCC pathogenesis. In this review, we summarize the physiological function of ATX and the ATX-LPA axis. Further, we focus on the emerging role of ATX and LPA signaling in HCC and the therapeutic potential of pharmacologically targeting ATX or LPA.

as an autocrine motility factor (15). ATX and LPA are found at high levels as soluble molecules in the blood, serum, and a wide variety of pathological liquids, such as extracellular space of hepatocytes in chronic hepatitis (16).

ATX consists of a somatomedin-B-like domain, a central phosphodiesterase catalytic domain (PDE), and a C-terminal inactive catalytic nuclease domain (NUC). The architecture of the PDE domain includes the active catalytic site which can bind different LPC and LPA. The NUC maintains the rigidity of the PDE domain. The SMB domain binds to integrins, which is critical for ATX interacting with cell surface integrins, delivering LPA close to its cognate receptors.

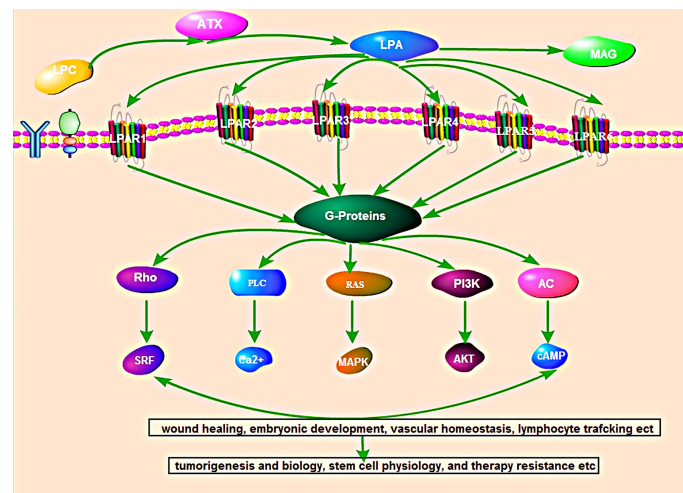
Several studies have shown that most of the biological functions of ATX are attributed to signaling by LPA (11). LPA signals through its six homologous receptors (LPAR1-6) that is involved in the regulation of many pathological conditions, including obesity, chronic inflammation, diabetes, neuropathy pain, and cancer (5). Simultaneously, LPAR binds to G proteins to activate downstream signaling pathways, including those involving Ras/Raf, RhoA, phosphoinositide 3-kinases, mitogen-activated protein kinases, and protein kinase B/mammalian target of rapamycin, which play important roles in wound healing, embryonic development, vascular homeostasis, lymphocyte trafficking, cancer biology, stem cell physiology, and therapy resistance, etc. (5) (**Figure 1**).

## ATX STRUCTURE AND SIGNALING

ATX was originally identified as a secreted phosphatase in conditioned media from A2058 melanoma cells and characterized

## ROLE OF ATX AND ATX-LPA AXIS IN HCC

Increased expression of ATX has been detected in many types of cancers, such as melanoma, breast invasive carcinoma, glioblastoma, lung adenocarcinoma, and ovarian cancer (14). A



**FIGURE 1** | Overview of the autotaxin-lysophosphatidic acid signaling pathway. ATX produces the lipid mediator and GPCR agonist lysophosphatidic acid (LPA) from abundantly available extracellular lysophosphatidylcholine (LPC). LPA signal through its six homologous receptors (LPAR1-6) that is binds to G proteins to activate downstream signaling pathways, including those involving Ras/Raf, RhoA, phosphoinositide 3-kinases, mitogen-activated protein kinases, and protein kinase B/mammalian target of rapamycin. The activated LPA-LPAR pathway participates in wound healing, embryonic development, vascular homeostasis, lymphocyte trafficking, cancer biology, stem cell physiology, and therapy resistance, etc.

clinical study showed that serum ATX levels were significantly elevated in breast cancer patients. Further research found that overexpression of ATX promotes the migration and invasion of MDA-B02 cell (17). In ovarian cancer, ATX regulates the activity of ovarian cancer stem cells through an LPA-mediated autocrine mechanism (18). And ATX-LPA axis has important effects on both tumorigenesis and cancer cell invasion. Studies have shown that the ATX-LPA axis could have direct oncogenic effects on normal cells. Liu et al (19) found that forced expression of ATX or one of the three LPA receptors in the mammary glands of transgenic mice can induce the spontaneous development of breast cancer. Further studies have shown that the ATX-LPA axis also enhances tumor aggressiveness. ATX-LPA axis plays a crucial role in cancer cell proliferation and growth, motility, invasion, and tumor tissue angiogenesis (18–21). As the important role of ATX/LPA in cancer, this review focused on the role and possible mechanism of ATX/LPA in HCC.

### Aberrant Expression of ATX and LPA in HCC

Recent studies have shown that ATX and LPA are highly expressed in HCC. The serum ATX activity and plasma LPA levels are significantly increased in patients with HCC vs normal patients. Also, ATX transcripts, along with LPA and LPA receptor protein, are significantly expressed in HCC tissues compared with normal tissues (22).

Wu's study demonstrated that ATX protein was overexpressed in human HCC tissues and human hepatoma cell lines compared with that in normal controls for the first time (23). Memet et al. (24) further confirmed that high ATX expression in HCC was detected in patients with histological grade II and III. Further, patients with elevated ATX expression levels were found to possess an 8-fold higher risk of death. But, controversy exists about ATX expression in HCC. Studies have shown that the increase in serum ATX levels in HCC patients may not be caused by abundant ATX production in HCC tissues but by inflammation and/or fibrosis in the background livers (25). ATX levels positively correlated with liver fibrosis stage and served as a predictor of liver disease severity and overall survival. Similarly, ATX was found to be significantly elevated in hepatitis-related HCC tissues (26). The collective findings from these studies suggest that ATX upregulation in HCC requires the presence of an inflammatory and fibrotic component that exists in liver. The latest research shows that hepatitis virus infection and/or fibrosis increases hepatocellular ATX expression that establishes a paracrine ATX-LPA signaling environment leading to HCC pathogenesis (26). On the other hand, highly expressed ATX can amplify pro-inflammatory and pro-fibrosis signaling pathways to induce HCC (27).

Indeed, Mazzocca et al. (28) found that LPA serum levels were higher in HCC patients than in healthy controls or liver cirrhosis patients. Among HCC patients, LPA serum levels were higher in those with metastasis compared to those without. Moreover, patients with higher serum levels of LPA also have larger HCC tumors and shorter survival compared with those with lower LPA serum concentrations (28). As mentioned above,

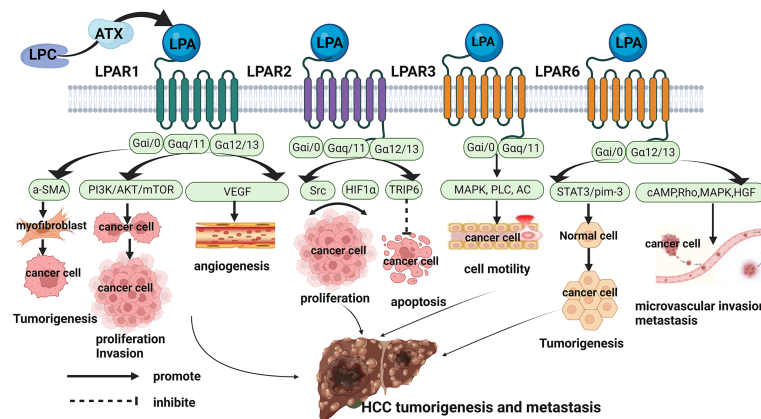
adipose tissue expresses ATX abundantly. The ATX-LPA signaling axis could be proposed as a possible molecular pathogenic link between metabolic disorders and HCC (28). In general, ATX-LPA is highly expressed in HCC and is related to the occurrence and progression of HCC.

### ATX-LPA Axis in HCC Tumorigenesis and Metastasis

As a motor factor, the ATX-LPA axis plays a direct role in liver pathophysiology. ATX-LPA axis is involved in tumor-promoting inflammation. It reported that ATX-LPA interacts with the tumor necrosis factor-nuclear factor- $\kappa$ B axis to regulate inflammatory liver tumorigenesis (23). ATX-LPA activation can disrupt lipid homeostasis, increase hepatic stellate cell activation, amplify fibrillation signals, and ultimately lead to the occurrence of HCC (27). Moreover, ATX-LPA axis plays an important role in regulating the biological behavior of HCC cells, thus promoting tumor progression (28). Zhang et al. (29) provided the first evidence that the ATX-LPA axis induces the expression of osteopontin to promote the migration of SMMC7721 cells. Other studies showed that ATX-LPA increases HCC cell invasion, proliferation and motility (24, 26). In addition, ATX-LPA axis induced epithelial-mesenchymal transition phenotype of HCC and HCC angiogenesis to accelerate the metastasis of HCC (23, 28). All these studies indicate that ATX/LPA axis plays an important role in the occurrence and progression of HCC.

Hence, the underlying mechanisms of ATX-LPA axis activation in HCC are a topic of concern. As previously mentioned, ATX-LPA axis is involved in the regulation of many pathological conditions through its six homologous G protein-coupled receptors (LPAR1-6). According to the homology, the LPA receptor can be subdivided two families: the endothelial differentiation gene (EDG) family and the non-EDG family. LPA1, LPA2 and LPA3 belong to the Endothelial Differentiation Gene (EDG) family, whereas LPA4, LPA5, and LPA6 represent a sub-cluster of the Purinergic GPCR family. LPA receptors use at least two G $\alpha$  subunits (G $\alpha$ 12/13, G $\alpha$  Q/11, G $\alpha$  I/O, and G $\alpha$ S) to signal, thereby activating different downstream pathways. In recent years, there is a lot of evidence that LPA-LPAR axis plays an indispensable part in the occurrence and development of cancer. This review further explores the role and mechanism of LPAR in the occurrence and progression of HCC, and provides a new direction for the mechanism of ATX-LPA axis activation in HCC (Figure 2).

LPAR1, also known as EDG2, is widely expressed in various tissues and organs of human body. It couples with and activates 3 types of G protein, G $\alpha$ i/0, G $\alpha$ q/11, and G $\alpha$ 12/13, to mediate cellular processes, cytoskeletal changes, Ca<sup>2+</sup> mobilization, immune function, and myelination by initiating downstream signaling including PI3K/AKT, Rho, MAPK, and PLC. Numerous studies have documented a critical role for LPAR1 in enhancing tumor motility and metastasis (13). In HCC, LPAR1 expression was significantly increased (25). LPAR1 promoted hepatocarcinogenesis by mediating the recruitment and activation of fibroblasts (30). Moreover, LPAR1 was found to



**FIGURE 2 |** Role and Mechanisms of ATX/LPA in hepatocellular carcinoma. LPAR1 promoted the occurrence, proliferation, migration and angiogenesis of HCC by coupling with  $G\alpha i/o$ ,  $G\alpha q/11$ , and  $G\alpha 12/13$ , and activating downstream a-SMA, PI3K/AKT/mTOR, VEGF pathways. LPAR2 may regulate the proliferation of HCC cells through Src signaling pathway and HIF1 $\alpha$  pathway. On the other hand, LPAR2 may interact with TRIP6 to inhibit apoptosis of HCC cells. LPAR3 promoted tumor cell motility in HCC through coupling to  $G\alpha i/o$  and  $G\alpha 11/q$  to mediate downstream activation of MAPK, PLC, and inactivation of AC. LPAR6 supported the tumorigenicity of HCC through a STAT3/pim-3-dependent mechanism. And LPAR6 increased microvascular invasion in HCC through mediating cAMP reduction, Rho-dependent morphological changes, MAPK and HGF activation.

promote viability and proliferation of HCC cell through PI3K/AKT/mTOR signaling (31). Another study showed that ATX-LPA increases HCC cell invasion and subsequent production of matrix metalloproteinase 9 by a LPAR-dependent mechanism (32). Vascular endothelial growth factor may stimulate LPA production by inducing ATX expression and increase LPAR1-mediated intracellular signaling to promote HCC angiogenesis (33). Taken together, these data confirmed the important role of LPAR1 in the occurrence and development of HCC.

LPAR2 (EDG4) is the same as LPAR1, is also coupled with  $G\alpha i/o$ ,  $G\alpha q/11$  and  $G\alpha 12/13$  in the heterotrimeric G protein family. Its activation is associated with tumor cell survival and migration through Ras, MAPK, phosphatidylinositol 3-kinase (PI3K), Rac, PLC, diacylglycerol (DG) and Rho and other downstream molecules transmit signals. By analyzing liver cancer tissues and adjacent tissues of 58 HCC patients, Enooku et al. found that the high LPA2 mRNA levels in HCC correlated with a poorer differentiation of HCC and were a risk factor for recurrence when combined with serum ATX levels (34). However, the role and mechanism of LPAR2 in the occurrence and progression of HCC is not clear. In other tumors, such as colon cancer and breast cancer ect, LPAR2 promotes the migration, invasion, and proliferation of tumor cells through LPAR2-Gi-Src-EGFR-ERK signaling and HIF1 $\alpha$ -LPA-LPAR2 Axis (35, 36). On the other hand, LPAR2 can also promote migration protect cancer cells against apoptotic stress after irradiation and chemotherapy through the focal adhesion molecule TRIP6 (37). These studies provide direction to explore the role and mechanism of LPAR2 in HCC in the future.

LPAR3 (EDG7) has 52% and 48% homology with LPA1 and LPA2, respectively, and couples to G proteins,  $G\alpha i/o$  and  $G\alpha 11/q$  to mediate downstream activation of MAPK, PLC, and inactivation of AC. It is the predominant receptor subtype in different kinds of cancers including HCC, and promotes tumor cell motility and

invasiveness. In a study by Zuckerman and coworkers, LPAR3 was high expressions in HCC tissues, and it may enhance HCC cells migration *via* the LPAR3-Gi-ERK/MAPK pathway (38). Okabe et al. found LPAR3 expression in rat hepatic RH7777 cancer cells contributes to elevate cell motility and invasive capability *via* the  $\beta$ -catenin pathway (39). They also demonstrated that cells survival of LPAR3-expressing was higher than control cells upon treatment with cisplatin or doxorubicin through multidrug-resistance-related up-regulation of genes (39).

LPAR6 (P2Y5) is the most recently identified LPA receptor, it binds  $G\alpha i/o$  and  $G\alpha 12/13$  to mediate cAMP reduction, Rho-dependent morphological changes, Ca<sup>2+</sup> mobilization and MAPK activation. The first demonstrated function of LPAR6 was to regulate human hair growth, and recent studies have found that LPAR6 is involved in tumorigenesis and progression (36). In HCC, LPAR6 expression correlated with poorer survival and increased microvascular invasion (34). And LPAR6 supported the tumorigenicity of HCC through a STAT3/pim-3-dependent mechanism (40). Zheng's study indicated that LPAR6 promotes HCC proliferation *via* the NCOA3-LPAR6-HGF signaling cascade (41). Research on the role and mechanism of LPAR6 in HCC is still relatively rare, which may be a future research direction.

In contrast to LPAR1-3 and LPAR6, LPAR4 and LPAR5 negatively affected cancer cell proliferation and motility (42). There have no articles about LPAR4 and LPAR5 in HCC, which may be a future research direction.

## THERAPEUTIC POTENTIAL OF ATX AND THE ATX-LPA AXIS

As the ATX-LPA axis plays key roles in promoting tumor migration, metastasis, invasion, and angiogenesis, blocking the

ATX-LPA signaling pathway would be an effective and important method for the treatment of cancers. Several molecules have been proposed as candidates with promising results, including Ki16452 (a LPAR1 and LPAR3 antagonist); ONO-8430506 (an ATX inhibitor); GLPG1690 (an ATX inhibitor) and LPAR6 antagonists.

Ki16425 was synthesized by the OHTA team, selectively inhibits LPA receptor-mediated actions including DNA synthesis and cell migration (43). Further research found that Ki16425 preferentially inhibited LPA1- and LPA3-mediated actions. In HCC, a study reported that the Ki16452 may significantly reduce LPA-related HCC cell invasion (28).

ONO-8430506 was attracted attention as a novel ATX inhibitor. Studies found that ONO-8430506 had a long-term effect of decreasing the activity of ATX activity and LPA production (44). Therefore, it effectively breaks the inflammatory cycle by reducing the concentration of inflammatory cytokines in the tumor microenvironment, resulting in decreased tumor growth (44). Another study found that ONO-8430506 enhanced the antitumor effect of paclitaxel in a breast cancer model (45).

GLPG1690 is a first-in-class inhibitor of ATX and sought to interfere with the treatment of fibro-proliferative diseases (46). As the first ATX clinical candidate, GLPG1690 is currently being evaluated in phase III clinical trials in Pulmonary fibrosis (47). A recent study found that GLPG1690 suppressed TSC2-loss associated oncogenicity *in vitro* and *in vivo* through inhibiting AKT and ERK1/2 signaling (48). Another study found that GLPG1690 increased the efficacy of radiotherapy and chemotherapy in a mouse model of breast cancer (49). Due to its promising drug-ability, a substantial amount of efforts has been invested in developing analogs of GLPG1690 by scientists in pursuit of potent ATX inhibitors.

As LPA receptor 6 (LPAR6) is essential for supporting the tumorigenicity of HCC, a substantial amount of efforts has been invested in developing LPAR6 inhibitors. Team of Mazzocca identified two promising candidates, namely 4-methylene-2-octyl-5-oxotetra-hydrofuran-3-carboxylic acid (C75) and 9-xanthenylacetic acid (XAA) (50). Further research confirmed

that both C75 and XAA inhibited HCC cell growth by causing a G1-phase arrest (50, 51).

## CONCLUSION

Evidence demonstrates that alterations of ATX-LPA signaling promote HCC development and progression *via* different mechanisms. It suggests that targeted inhibition of the ATX-LPA pathway may be a new therapeutic strategy for inhibiting HCC metastasis and drug resistance. The LPAR inhibitors discovered in the latest research inhibit the growth of HCC by affecting the function of mitochondria of HCC cells (50). These inhibitors have the specific potential to be converted into effective molecules with no side effects for HCC treatment. A new study finds that the ATX-LPA signaling axis creates a T cell-excluding, pro-tumorigenic microenvironment that is amenable to therapeutic intervention. According to the latest guidelines, the combination of targeted drugs and immunotherapy is the best recommended treatment for advanced HCC. Based on this, it is likely that targeting ATX-LPA signaling will develop into an important part of a comprehensive strategy to combat advanced HCC and bring a brighter future to liver cancer patients. It still needs to be supported by more studies on ATX-LPA axis in HCC in the future.

## AUTHOR CONTRIBUTIONS

SS and QZ performed the majority of the writing and prepared the figures; JS carried out the literature review for data collection and coordinated the writing of the paper; KD and FY designed the study and revised the manuscript. All authors read and approved the final manuscript.

## FUNDING

This work supported by the National Natural Science Foundation of China, No. 81972673.

## REFERENCES

- Ringelhan M, Pfister D, O'Connor T, Pikarsky E, Heikenwalder M. The Immunology of Hepatocellular Carcinoma. *Nat Immunol* (2018) 19(3):222–32. doi: 10.1038/s41590-018-0044-z
- Ma C, Zhang Q, Greten TF. MDSCs in Liver Cancer: A Critical Tumor-Promoting Player and a Potential Therapeutic Target. *Cell Immunol* (2021) 361:104295. doi: 10.1016/j.cellimm.2021.104295
- Verslype C, Rosmorduc O, Rougier P, Group EGW. Hepatocellular Carcinoma: ESMO-ESDO Clinical Practice Guidelines for Diagnosis, Treatment and Follow-Up. *Ann Oncol* (2012) 23 Suppl 7:vii41–8. doi: 10.1093/annonc/mds225
- Xia S, Pan Y, Liang Y, Xu J, Cai X. The Microenvironmental and Metabolic Aspects of Sorafenib Resistance in Hepatocellular Carcinoma. *EBioMedicine* (2020) 51:102610. doi: 10.1016/j.ebiom.2019.102610
- Zhang X, Li M, Yin N, Zhang J. The Expression Regulation and Biological Function of Autotaxin. *Cells* (2021) 10(4):939–52. doi: 10.3390/cells10040939
- Peyruchaud O, Saier L, Leblanc R. Autotaxin Implication in Cancer Metastasis and Autoimmune Disorders: Functional Implication of Binding Autotaxin to the Cell Surface. *Cancers (Basel)* (2019) 12(1):105–20. doi: 10.3390/cancers12010105
- Tabuchi S. The Autotaxin-Lysophosphatidic Acid-Lysophosphatidic Acid Receptor Cascade: Proposal of a Novel Potential Therapeutic Target for Treating Glioblastoma Multiforme. *Lipids Health Dis* (2015) 14:56. doi: 10.1186/s12944-015-0059-5
- Lee SC, Fujiwara Y, Liu J, Yue J, Shimizu Y, Norman DD, et al. Autotaxin and LPA1 and LPA5 Receptors Exert Disparate Functions in Tumor Cells Versus the Host Tissue Microenvironment in Melanoma Invasion and Metastasis. *Mol Cancer Res* (2015) 13(1):174–85. doi: 10.1158/1541-7786.MCR-14-0263
- Kaffe E, Magkrioti C, Aidinis V. Deregulated Lysophosphatidic Acid Metabolism and Signaling in Liver Cancer. *Cancers (Basel)* (2019) 11(11):1626–56. doi: 10.3390/cancers11111626
- Su SC, Hu X, Kenney PA, Merrill MM, Babaian KN, Zhang XY, et al. Autotaxin-Lysophosphatidic Acid Signaling Axis Mediates Tumorigenesis

- and Development of Acquired Resistance to Sunitinib in Renal Cell Carcinoma. *Clin Cancer Res* (2013) 19(23):6461–72. doi: 10.1158/1078-0432.CCR-13-1284
11. Gaetano CG, Samadi N, Tomsig JL, Macdonald TL, Lynch KR, Brindley DN. Inhibition of Autotaxin Production or Activity Blocks Lysophosphatidylcholine-Induced Migration of Human Breast Cancer and Melanoma Cells. *Mol Carcinog* (2009) 48(9):801–9. doi: 10.1002/mc.20524
  12. Aiello S, Casiraghi F. Lysophosphatidic Acid: Promoter of Cancer Progression and of Tumor Microenvironment Development. A Promising Target for Anticancer Therapies? *Cells* (2021) 10(6):1390–1406. doi: 10.3390/cells10061390
  13. Tigyi GJ, Yue J, Norman DD, Szabo E, Balogh A, Balazs L, et al. Regulation of Tumor Cell - Microenvironment Interaction by the Autotaxin-Lysophosphatidic Acid Receptor Axis. *Adv Biol Regul* (2019) 71:183–93. doi: 10.1016/j.jbior.2018.09.008
  14. Tang X, Benesch MGK, Brindley DN. Role of the Autotaxin-Lysophosphatidate Axis in the Development of Resistance to Cancer Therapy. *Biochim Biophys Acta Mol Cell Biol Lipids* (2020) 1865(8):158716. doi: 10.1016/j.bbalip.2020.158716
  15. Lee HY, Bae GU, Jung ID, Lee JS, Kim YK, Noh SH, et al. Autotaxin Promotes Motility via G Protein-Coupled Phosphoinositide 3-Kinase Gamma in Human Melanoma Cells. *FEBS Lett* (2002) 515(1-3):137–40. doi: 10.1016/s0014-5793(02)02457-2
  16. Sevastou I, Kaffe E, Mouratis MA, Aidinis V. Lysoglycerophospholipids in Chronic Inflammatory Disorders: The PLA(2)/LPC and ATX/LPA Axes. *Biochim Biophys Acta* (2013) 1831(1):42–60. doi: 10.1016/j.bbalip.2012.07.019
  17. Yang SY, Lee J, Park CG, Kim S, Hong S, Chung HC, et al. Expression of Autotaxin (NPP-2) Is Closely Linked to Invasiveness of Breast Cancer Cells. *Clin Exp Metastasis* (2002) 19(7):603–8. doi: 10.1023/a:1020950420196
  18. Seo EJ, Kwon YW, Jang IH, Kim DK, Lee SI, Choi EJ, et al. Autotaxin Regulates Maintenance of Ovarian Cancer Stem Cells Through Lysophosphatidic Acid-Mediated Autocrine Mechanism. *Stem Cells* (2016) 34(3):551–64. doi: 10.1002/stem.2279
  19. Liu S, Umezu-Goto M, Murph M, Lu Y, Liu W, Zhang F, et al. Expression of Autotaxin and Lysophosphatidic Acid Receptors Increases Mammary Tumorigenesis, Invasion, and Metastases. *Cancer Cell* (2009) 15(6):539–50. doi: 10.1016/j.ccr.2009.03.027
  20. Auciello FR, Bulusu V, Oon C, Tait-Mulder J, Berry M, Bhattacharyya S, et al. A Stromal Lysolipid-Autotaxin Signaling Axis Promotes Pancreatic Tumor Progression. *Cancer Discov* (2019) 9(5):617–27. doi: 10.1158/2159-8290.CD-18-1212
  21. Magkrioti C, Oikonomou N, Kaffe E, Mouratis MA, Xylourgidis N, Barbayanni I, et al. The Autotaxin-Lysophosphatidic Acid Axis Promotes Lung Carcinogenesis. *Cancer Res* (2018) 78(13):3634–44. doi: 10.1158/0008-5472.CAN-17-3797
  22. Sokolov E, Eheim AL, Ahrens WA, Walling TL, Swet JH, McMillan MT, et al. Lysophosphatidic Acid Receptor Expression and Function in Human Hepatocellular Carcinoma. *J Surg Res* (2013) 180(1):104–13. doi: 10.1016/j.jss.2012.10.054
  23. Wu JM, Xu Y, Skill NJ, Sheng H, Zhao Z, Yu M, et al. Autotaxin Expression and Its Connection With the TNF-Alpha-NF-kappaB Axis in Human Hepatocellular Carcinoma. *Mol Cancer* (2010) 9:71. doi: 10.1186/1476-4598-9-71
  24. Memet I, Tsalkidou E, Tsaroucha AK, Lambropoulou M, Chatzaki E, Trypsianis G, et al. Autotaxin Expression in Hepatocellular Carcinoma. *J Invest Surg* (2018) 31(5):359–65. doi: 10.1080/08941939.2017.1331280
  25. Kondo M, Ishizawa T, Enooku K, Tokuhara Y, Ohkawa R, Uranbileg B, et al. Increased Serum Autotaxin Levels in Hepatocellular Carcinoma Patients Were Caused by Background Liver Fibrosis But Not by Carcinoma. *Clin Chim Acta* (2014) 433:128–34. doi: 10.1016/j.cca.2014.03.006
  26. Farquhar MJ, Humphreys IS, Rudge SA, Wilson GK, Bhattacharya B, Ciaccia M, et al. Autotaxin-Lysophosphatidic Acid Receptor Signalling Regulates Hepatitis C Virus Replication. *J Hepatol* (2017) 66(5):919–29. doi: 10.1016/j.jhep.2017.01.009
  27. Kaffe E, Katsifa A, Xylourgidis N, Ninou I, Zannikou M, Harokopos V, et al. Hepatocyte Autotaxin Expression Promotes Liver Fibrosis and Cancer. *Hepatology* (2017) 65(4):1369–83. doi: 10.1002/hep.28973
  28. Lopane C, Agosti P, Gigante I, Sabba C, Mazzocca A. Implications of the Lysophosphatidic Acid Signaling Axis in Liver Cancer. *Biochim Biophys Acta Rev Cancer* (2017) 1868(1):277–82. doi: 10.1016/j.bbcan.2017.06.002
  29. Zhang R, Zhang Z, Pan X, Huang X, Huang Z, Zhang G. ATX-LPA Axis Induces Expression of OPN in Hepatic Cancer Cell SMMC7721. *Anat Rec (Hoboken)* (2011) 294(3):406–11. doi: 10.1002/ar.21324
  30. Erstad DJ, Tager AM, Hoshida Y, Fuchs BC. The Autotaxin-Lysophosphatidic Acid Pathway Emerges as a Therapeutic Target to Prevent Liver Cancer. *Mol Cell Oncol* (2017) 4(3):e1311827. doi: 10.1080/23723556.2017.1311827
  31. Xu M, Liu Z, Wang C, Yao B, Zheng X. EDG2 Enhanced the Progression of Hepatocellular Carcinoma by LPA/PI3K/AKT/ mTOR Signaling. *Oncotarget* (2017) 8(39):66154–68. doi: 10.18632/oncotarget.19825
  32. Park SY, Jeong KJ, Panupinthu N, Yu S, Lee J, Han JW, et al. Lysophosphatidic Acid Augments Human Hepatocellular Carcinoma Cell Invasion Through LPA1 Receptor and MMP-9 Expression. *Oncogene* (2011) 30(11):1351–9. doi: 10.1038/onc.2010.517
  33. Ptaszynska MM, Pendrak ML, Stracke ML, Roberts DD. Autotaxin Signaling via Lysophosphatidic Acid Receptors Contributes to Vascular Endothelial Growth Factor-Induced Endothelial Cell Migration. *Mol Cancer Res* (2010) 8(3):309–21. doi: 10.1158/1541-7786.MCR-09-0288
  34. Enooku K, Uranbileg B, Ikeda H, Kurano M, Sato M, Kudo H, et al. Higher LPA2 and LPA6 mRNA Levels in Hepatocellular Carcinoma Are Associated With Poorer Differentiation, Microvascular Invasion and Earlier Recurrence With Higher Serum Autotaxin Levels. *PLoS One* (2016) 11(9):e0161825. doi: 10.1371/journal.pone.0161825
  35. Lee J, Park SY, Lee EK, Park CG, Chung HC, Rha SY, et al. Activation of Hypoxia-Inducible Factor-1alpha Is Necessary for Lysophosphatidic Acid-Induced Vascular Endothelial Growth Factor Expression. *Clin Cancer Res* (2006) 12(21):6351–8. doi: 10.1158/1078-0432.CCR-06-1252
  36. Lin YH, Lin YC, Chen CC. Lysophosphatidic Acid Receptor Antagonists and Cancer: The Current Trends, Clinical Implications, and Trials. *Cells* (2021) 10(7):1629–45. doi: 10.3390/cells10071629
  37. Tigyi GJ, Johnson LR, Lee SC, Norman DD, Szabo E, Balogh A, et al. Lysophosphatidic Acid Type 2 Receptor Agonists in Targeted Drug Development Offer Broad Therapeutic Potential. *J Lipid Res* (2019) 60(3):464–74. doi: 10.1194/jlr.S091744
  38. Zuckerman V, Sokolov E, Swet JH, Ahrens WA, Showlater V, Iannitti DA, et al. Expression and Function of Lysophosphatidic Acid Receptors (LPARs) 1 and 3 in Human Hepatic Cancer Progenitor Cells. *Oncotarget* (2016) 7(3):2951–67. doi: 10.18632/oncotarget.6696
  39. Okabe K, Hayashi M, Kato K, Okumura M, Fukui R, Honoki K, et al. Lysophosphatidic Acid Receptor-3 Increases Tumorigenicity and Aggressiveness of Rat Hepatoma RH7777 Cells. *Mol Carcinog* (2013) 52(4):247–54. doi: 10.1002/mc.21851
  40. Mazzocca A, Dituri F, De Santis F, Filannino A, Lopane C, Betz RC, et al. Lysophosphatidic Acid Receptor LPAR6 Supports the Tumorigenicity of Hepatocellular Carcinoma. *Cancer Res* (2015) 75(3):532–43. doi: 10.1158/0008-5472.CAN-14-1607
  41. Zheng X, Jia YH, Qiu L, Zeng XY, Xu LL, Wei MT, et al. A Potential Target for Liver Cancer Management, Lysophosphatidic Acid Receptor 6 (LPAR6), Is Transcriptionally Up-Regulated by the NCOA3 Coactivator. *J Biol Chem* (2020) 295(6):1474–88. doi: 10.1074/jbc.RA119.009899
  42. Ishii S, Hirane M, Fukushima K, Tomimatsu A, Fukushima N, Tsujiuchi T. Diverse Effects of LPA4, LPA5 and LPA6 on the Activation of Tumor Progression in Pancreatic Cancer Cells. *Biochem Biophys Res Commun* (2015) 461(1):59–64. doi: 10.1016/j.bbrc.2015.03.169
  43. Ohta H, Sato K, Murata N, Damirin A, Malchinkhuu E, Kon J, et al. Ki16425, a Subtype-Selective Antagonist for EDG-Family Lysophosphatidic Acid Receptors. *Mol Pharmacol* (2003) 64(4):994–1005. doi: 10.1124/mol.64.4.994
  44. Benesch MGK, Ko YM, Tang XY, Dewald J, Lopez-Campistrous A, Zhao YY, et al. Autotaxin Is an Inflammatory Mediator and Therapeutic Target in Thyroid Cancer. *Endocr-Relat Cancer* (2015) 22(4):593–607. doi: 10.1530/ERC-15-0045
  45. Iwaki Y, Ohhata A, Nakatani S, Hisaichi K, Okabe Y, Hiramatsu A, et al. ONO-8430506: A Novel Autotaxin Inhibitor That Enhances the Antitumor Effect of Paclitaxel in a Breast Cancer Model. *ACS Med Chem Lett* (2020) 11(6):1335–41. doi: 10.1021/acsmchemlett.0c00200

46. Tan Z, Lei H, Guo M, Chen Y, Zhai X. An Updated Patent Review of Autotaxin Inhibitors (2017-Present). *Expert Opin Ther Pat* (2021) 31(5):421–34. doi: 10.1080/13543776.2021.1867106
47. Kraljic K, Jelic D, Ziher D, Cvrtila A, Dragojevic S, Sinkovic V, et al. Benzoxaboroles-Novel Autotaxin Inhibitors. *Molecules* (2019) 24(19):3419–41. doi: 10.3390/molecules24193419
48. Feng Y, Mischler WJ, Gurung AC, Kavanagh TR, Androsov G, Sadow PM, et al. Therapeutic Targeting of the Secreted Lysophospholipase D Autotaxin Suppresses Tuberous Sclerosis Complex-Associated Tumorigenesis. *Cancer Res* (2020) 80(13):2751–63. doi: 10.1158/0008-5472.CAN-19-2884
49. Tang XY, Wuest M, Benesch MGK, Dufour J, Zhao YY, Curtis JM, et al. Inhibition of Autotaxin With GLPG1690 Increases the Efficacy of Radiotherapy and Chemotherapy in a Mouse Model of Breast Cancer. *Mol Cancer Ther* (2020) 19(1):63–74. doi: 10.1158/1535-7163.MCT-19-0386
50. Gnocchi D, Kapoor S, Nitti P, Cavalluzzi MM, Lentini G, Denora N, et al. Novel Lysophosphatidic Acid Receptor 6 Antagonists Inhibit Hepatocellular Carcinoma Growth Through Affecting Mitochondrial Function. *J Mol Med (Berl)* (2020) 98(2):179–91. doi: 10.1007/s00109-019-01862-1
51. Gnocchi D, Cavalluzzi MM, Mangiatordi GF, Rizzi R, Tortorella C, Spennacchio M, et al. Xanthenylacetic Acid Derivatives Effectively Target Lysophosphatidic Acid Receptor 6 to Inhibit Hepatocellular Carcinoma Cell Growth. *Chemmedchem* (2021) 16(13):2121–9. doi: 10.1002/cmde.202100032

**Conflict of Interest:** The authors declare that the research was conducted in the absence of any commercial or financial relationships that could be construed as a potential conflict of interest.

**Publisher's Note:** All claims expressed in this article are solely those of the authors and do not necessarily represent those of their affiliated organizations, or those of the publisher, the editors and the reviewers. Any product that may be evaluated in this article, or claim that may be made by its manufacturer, is not guaranteed or endorsed by the publisher.

Copyright © 2022 She, Zhang, Shi, Yang and Dai. This is an open-access article distributed under the terms of the Creative Commons Attribution License (CC BY). The use, distribution or reproduction in other forums is permitted, provided the original author(s) and the copyright owner(s) are credited and that the original publication in this journal is cited, in accordance with accepted academic practice. No use, distribution or reproduction is permitted which does not comply with these terms.