

RESEARCH ARTICLE

Impact of a Glaucoma Severity Index on Results of Trabectome Surgery: Larger Pressure Reduction in More Severe Glaucoma

Ralitsa T. Loewen, Pritha Roy, Hardik A. Parikh, Yalong Dang, Joel S. Schuman, Nils A. Loewen*

Department of Ophthalmology, School of Medicine, University of Pittsburgh, Pittsburgh, Pennsylvania, United States of America

* Loewen.nils@gmail.com



CrossMark
click for updates

OPEN ACCESS

Citation: Loewen RT, Roy P, Parikh HA, Dang Y, Schuman JS, Loewen NA (2016) Impact of a Glaucoma Severity Index on Results of Trabectome Surgery: Larger Pressure Reduction in More Severe Glaucoma. PLoS ONE 11(3): e0151926. doi:10.1371/journal.pone.0151926

Editor: Ted S Acott, Casey Eye Institute, UNITED STATES

Received: October 30, 2015

Accepted: March 7, 2016

Published: March 23, 2016

Copyright: © 2016 Loewen et al. This is an open access article distributed under the terms of the [Creative Commons Attribution License](https://creativecommons.org/licenses/by/4.0/), which permits unrestricted use, distribution, and reproduction in any medium, provided the original author and source are credited.

Data Availability Statement: All relevant data are within the paper and its Supporting Information files.

Funding: This work was funded by a Research to Prevent Blindness Departmental Grant and an Individual Grant from the Department of Ophthalmology, University of Pittsburgh. The sponsor or funding organization had no role in the design or conduct of this research.

Competing Interests: NAL has received honoraria for wetlabs and lectures as a MIGS trainer from Neomedix Inc. This does not alter the authors'

Abstract

Purpose

To stratify outcomes of trabectome-mediated ab interno trabeculectomy (AIT) by glaucoma severity using a simple and clinically useful glaucoma index. Based on prior data of trabectome after failed trabeculectomy, we hypothesized that more severe glaucoma might have a relatively more reduced facility compared to mild glaucoma and respond with a larger IOP reduction to trabecular meshwork ablation.

Methods

Patients with primary open angle glaucoma who had undergone AIT without any other same session surgery and without any second eye surgery during the following 12 months were analyzed. Eyes of patients that had less than 12 months follow up or were diagnosed with neovascular glaucoma were excluded. A glaucoma index (GI) was created to capture glaucoma severity based on visual field, number of preoperative medications, and preoperative IOP. Visual field (VF) was separated into 3 categories: mild, moderate, and advanced (assigned 1, 2, and 3 points, respectively). Preoperative number of medications (meds) was divided into 4 categories: ≤ 1 , 2, 3 or ≥ 4 , and assigned with a value of 1 to 4. Baseline IOP (IOP) was divided into 3 categories: < 20 mmHg, 20–29 mmHg, and greater than 30 mmHg and assigned with 1 to 3 points. GI was defined as $IOP \times meds \times VF$ and separated into 4 groups: < 6 (Group 1), 6–12 (Group 2), > 12 –18 (Group 3) and > 18 (Group 4). Linear regression was used to determine if there was an association between GI group and IOP reduction after one year or age, gender, race, diagnosis, cup to disc (C/D) ratio, and Shaffer grade.

Results

Out of 1340 patients, 843 were included in the analysis. The GI group distribution was GI1 = 164, GI2 = 202, GI3 = 260, and GI4 = 216. Mean IOP reduction after one year was 4.0 ± 5.4 , 6.4 ± 5.8 , 9.0 ± 7.6 , 12.0 ± 8.0 mmHg for GI groups 1 to 4, respectively. Linear regression showed that IOP reduction was associated with GI group after adjusting for age, gender, race, diagnosis, cup to disc ratio, and Shaffer grade. Each GI group increase of 1 was

adherence to PLOS ONE policies on sharing data and materials.

associated with incremental IOP reductions of 2.95 ± 0.29 mmHg. Success rate at 12 months was 90%, 77%, 77%, and 71% for GI groups 1 to 4. The log-rank test suggested significant differences between GI groups.

Conclusion

A simple glaucoma index, GI, was created to capture glaucoma severity and a relative resistance to treatment. A higher GI was associated with a larger IOP reduction in trabectome surgery. This indicates that there is a role for AIT beyond mild glaucoma and ocular hypertension.

Introduction

The trabecular meshwork (TM) is the primary site of outflow resistance in open angle glaucoma [1]. Plasma-mediated ablation of this tissue in ab interno trabeculectomy (AIT) using the trabectome increases outflow facility in different types of glaucomas [2–4]. We hypothesized that an eye with a more diseased trabecular meshwork has a higher outflow resistance and might therefore experience a larger intraocular pressure (IOP) reduction than one with only a mild outflow resistance. The preoperative number of medications and visual field status might similarly reflect the severity of trabecular meshwork disease and its resistance in open angle glaucoma. A previous study suggested that patients with a failed trabeculectomy and advanced visual field damage had a larger IOP decrease from trabectome surgery than patients with a less advanced visual field loss but these differences were not statistically significant due to sample size [5].

In the present study we created a simple glaucoma index that combines preoperative IOP, number of preoperative medications and visual field damage to capture relative glaucoma severity and resistance to treatment. This index was used to compare outcomes of AIT stratified by glaucoma index.

Methods

Data for this study were analyzed with approval by the Institutional Review Board of the University of Pittsburgh, in accordance with the Declaration of Helsinki and the Health Insurance Portability and Accountability Act. No informed consent was necessary for this retrospective, observational cohort study. Patient records were anonymized and de-identified prior to analysis. The specific target IOP was set on a case-by-case basis by the individual treating physician and the maximum IOP was estimated to prevent further nerve damage. Patients who were followed for less than 12 months or diagnosed with neovascular glaucoma were excluded. Indications for AIT consisted of worsening glaucoma on maximally tolerated topical therapy. Anterior chamber angles in all patients were graded by Shaffer grade (SG) [3,6], a classification system in which '0' to 'slit' represents a totally or partially closed angle with potential for angle closure that is present or very likely, '1' an angle width of 10° (very narrow) and closure potential that is probable, '2' representing 20° and possible potential for closure, '3' standing for 20° to 45° with unlikely closure and grade '4' indicating a wide open angle and improbable potential for angle closure.

The glaucoma index, GI, was created as a variable based on visual field, number of preoperative medications, and preoperative IOP. Visual field was separated into 4 categories: up to mild, up to moderate, up to advanced, and more than advanced visual field damage [7], which were assigned 1, 2, 3 and 4 points, respectively. Preoperative number of medications were

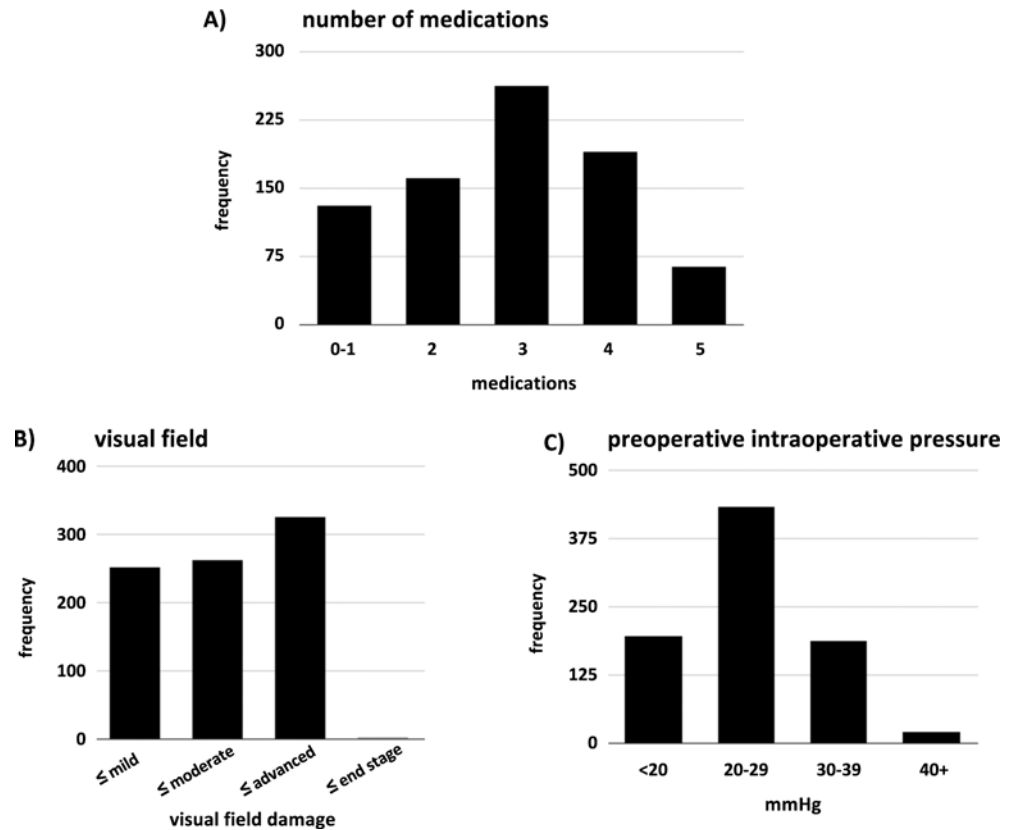


Fig 1. Distribution of Glaucoma Index Variables. A) Visual field score distribution included a relatively large number of eyes with advanced visual field damage. B) Three medications was the most common median number of eye drops used. C) Most patients had a preoperative intraocular pressure in the range of 20 to 29 mmHg.

doi:10.1371/journal.pone.0151926.g001

divided into 4 categories: 0–1, 2, 3 or 4+, and assigned with a value of 1 to 4, respectively. Baseline IOP was divided into 3 categories: <20 mmHg, 20–29 mmHg, 30–39 mmHg, and greater than 40 mmHg and assigned with 1 to 4 points, respectively. These categories were chosen based on IOP distribution and designed not to underrate low pressure glaucoma. GI was then defined as preoperative IOP × preoperative number of medications × VF. GI was separated into 4 groups: <6 (Group 1), 6–12 (Group 2), >12–18 (Group 3) and >18 (Group 4). A power calculation indicated that 82 patients would allow to detect a GI group IOP difference or 3 mmHg for a medium-sized effect of 0.3 with a power of 80%. Linear regression was used to determine if there was an association between GI group and IOP reduction after one year. An identical analysis was performed only for patients with primary open angle glaucoma.

Baseline characteristics were compared by the Kruskal-Wallis and chi square tests for continuous and categorical variables between GI groups, respectively. Univariate linear regression was performed first and those variables that were found to be statistically significant were included into multivariate regression. The term “success rate” was used here instead of the statistics term “survival” and defined as IOP ≤ 21 mmHg, at least 20% IOP reduction from baseline in any two consecutive visits after three months, and no secondary glaucoma or lens surgery. Log-rank test was used to compare success distributions of GI groups. Continuous data was reported as mean ± standard deviation.

Table 1. Demographics and Biometrical Data.

| | GI Group 1 (n = 164) | GI Group 2(n = 202) | GI Group 3(n = 260) | GI Group 4(n = 216) | p-value |
|--------------------|----------------------|---------------------|---------------------|---------------------|---------|
| Age | | | | | 0.26 |
| Mean±SD | 69±12 | 66±14 | 67±17 | 64±19 | |
| Range | 36–92 | 18–88 | 18–96 | 18–96 | |
| Gender | | | | | <0.01 |
| Female | 102 (62%) | 117 (58%) | 123 (47%) | 99 (46%) | |
| Male | 59 (36%) | 84 (42%) | 136 (52%) | 109 (50%) | |
| NR | 3 (2%) | 1 (0%) | 1 (0%) | 8 (4%) | |
| Ethnicity | | | | | <0.01 |
| African American | 15 (9%) | 10 (5%) | 15 (6%) | 11 (5%) | |
| Asian | 26 (16%) | 47 (23%) | 74 (28%) | 76 (35%) | |
| Caucasian | 93 (57%) | 114 (56%) | 146 (56%) | 97 (45%) | |
| Hispanic | 22 (13%) | 15 (7%) | 14 (5%) | 19 (9%) | |
| Other | 8 (5%) | 16 (8%) | 11 (4%) | 13 (6%) | |
| Diagnosis | | | | | <0.01 |
| POAG | 136 (83%) | 154 (76%) | 177 (68%) | 136 (63%) | |
| Pseudoexfoliation | 10 (6%) | 20 (10%) | 39 (15%) | 29 (13%) | |
| Pigment Dispersion | 9 (5%) | 7 (3%) | 8 (3%) | 5 (2%) | |
| Steroid Induced | 3 (2%) | 12 (6%) | 24 (9%) | 34 (16%) | |
| Others | 6 (4%) | 9 (4%) | 12 (5%) | 12 (6%) | |
| VA (logMar) | | | | | <0.01 |
| Mean±SD | 0.23±0.34 | 0.24±0.36 | 0.32±0.53 | 0.44±0.58 | |
| Range | -0.18–2.12 | -0.19–2.00 | -0.19–3.00 | -0.19–3.00 | |
| Disc C/D | | | | | <0.01 |
| Mean±SD | 0.69±0.16 | 0.75±0.15 | 0.73±0.18 | 0.83±0.11 | |
| Range | 0.1–0.95 | 0.3–1.0 | 0.1–1.0 | 0.3–1.0 | |
| Lens Status | | | | | 0.05 |
| Phakic | 95 (58%) | 115 (57%) | 132 (51%) | 96 (44%) | |
| Pseudophakic | 54 (33%) | 77 (38%) | 114 (44%) | 103 (48%) | |
| Aphakic | 1 (1%) | 1 (0%) | 0 (0%) | 3 (1%) | |
| NR | 14 (9%) | 9 (4%) | 14 (5%) | 14 (6%) | |
| Shaffer Grade | | | | | 0.16 |
| I | 1 (1%) | 6 (3%) | 3 (1%) | 1 (0%) | |
| II | 9 (5%) | 10 (5%) | 14 (5%) | 16 (7%) | |
| III | 42 (26%) | 58 (29%) | 80 (31%) | 69 (32%) | |
| IV | 99 (60%) | 97 (48%) | 131 (50%) | 103 (48%) | |
| NR | 13 (8%) | 31 (15%) | 32 (12%) | 27 (12%) | |

GI1: GI<6, GI2: 6≤GI<12, GI3: 12≤GI<18, GI4: GI≥18

doi:10.1371/journal.pone.0151926.t001

Results

A total of 842 eyes were analyzed. The average age of all patients was 66.4±15.8 years. Variables used to compute GI were 1) preoperative IOP, 2) preoperative number of medications and 3) visual field status. The average preoperative IOP for all patients was 25.1±6.7 mmHg, the average medication count was 2.9±1.0 and the most common visual field was advanced. The baseline IOP categories were chosen as described above because of the distribution ([Fig 1](#)).

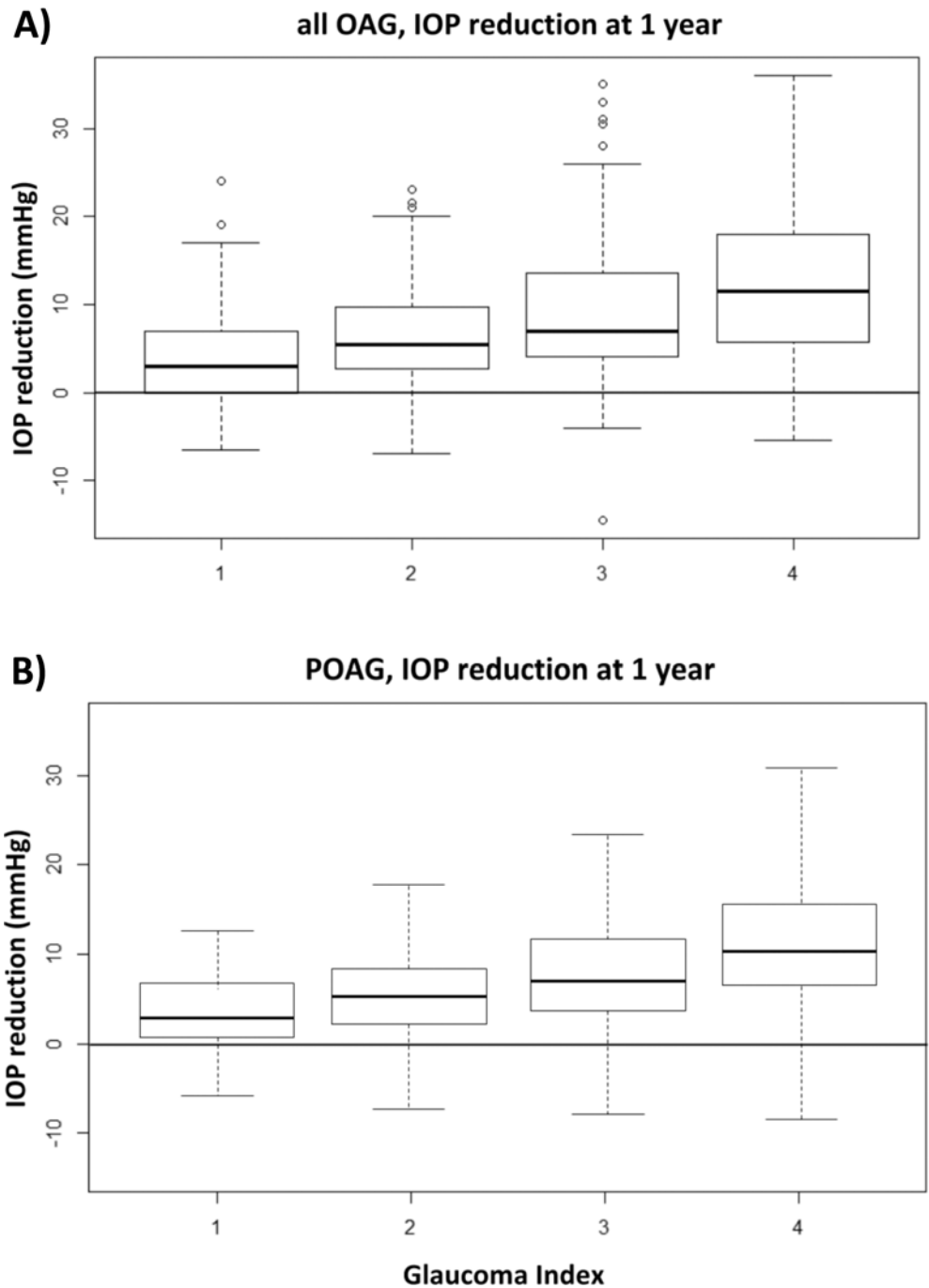


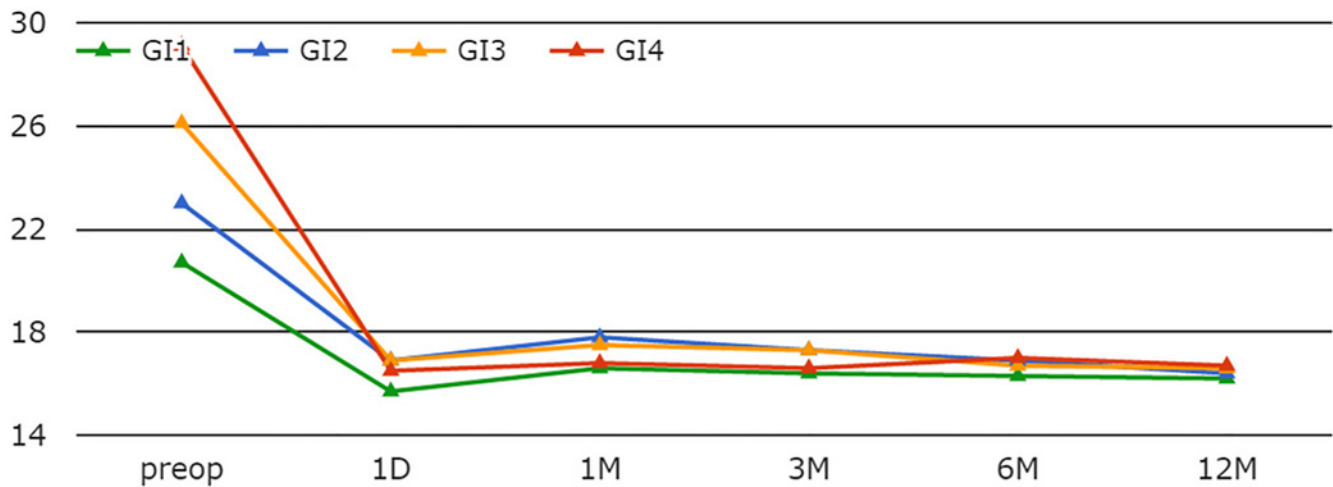
Fig 2. IOP reduction at one year by glaucoma index. Patients with a higher glaucoma index (GI) had a larger absolute reduction of intraocular pressure (IOP).

doi:10.1371/journal.pone.0151926.g002

Only 22 eyes had an IOP above 40 mmHg and had to be excluded because of an insufficient power to contribute to a separate group. There was no significant age difference among GI groups ([Table 1](#)).

GI1 had a significantly lower portion of male patients while the other groups were more gender balanced. Most patients were Caucasians followed by Asians and then by Hispanics and

IOP by GI



| | preop | 1D | 1M | 3M | 6M | 12M |
|------------|----------|----------|----------|----------|----------|----------|
| GI1 | 20.7±5.6 | 15.7±7.0 | 16.6±5.1 | 16.4±4.4 | 16.3±3.8 | 16.2±3.6 |
| GI2 | 23.0±5.9 | 16.9±8.6 | 17.8±6.2 | 17.3±5.3 | 16.9±3.9 | 16.4±3.6 |
| GI3 | 26.1±7.8 | 16.9±8.7 | 17.5±5.8 | 17.3±5.7 | 16.7±4.6 | 16.6±4.7 |
| GI4 | 29.1±7.1 | 16.5±8.4 | 16.8±6.3 | 16.6±5.0 | 17.0±4.8 | 16.7±4.7 |

Fig 3. Individual IOPs by glaucoma index (GI). A higher GI was associated with a higher preoperative IOP while postoperative IOPs were similar (table: mean±SD).

doi:10.1371/journal.pone.0151926.g003

African Americans at comparable percentages. Seventy-one percent had the diagnosis of primary open angle glaucoma which was more common in GI1. Steroid induced glaucoma increased in frequency from GI1 to GI4 eightfold. Visual acuity decreased from GI1 to GI4 to approximately half of that of GI1. The cup to disc (C/D) ratio increased significantly by glaucoma severity index from 0.69 to 0.83. There were more pseudophakic eyes in GI4 compared to the other groups and most of the phakic eyes were found in GI1 ($p = 0.05$). There were no significant differences in distribution of degree of angle opening among GI groups and approximately 80% of eyes had a Shaffer grade above 2 indicating a wide open angle.

Mean IOP reduction at one year was 4.0 ± 5.4 , 6.4 ± 5.8 , 9.0 ± 7.6 , 12.0 ± 8.0 mmHg for GI groups 1 to 4, respectively (Fig 2), with significant intergroup differences ($p < 0.05$). There was a larger range of IOP reduction in higher groups.

A higher preoperative IOP was associated with a higher GI group assignment but the postoperative IOPs were not significantly different at any visit and often indistinguishable (Fig 3).

Similarly, the higher the GI group assignment, the higher the preoperative medication count (Fig 4). The higher GI groups, GI4 and GI3, had a significantly lower average medication count at 6 and 12 months.

Patients with moderate visual field damage had a slightly higher average preoperative and day 1 IOP compared to patients with mild or advanced visual field loss (Fig 5). Differences were not significant thereafter ($p > 0.05$). Compared to GI2 through GI4, GI1 had a better success rate of 90%, the highest of all groups (Fig 6). This was followed by GI2 and GI3 with 77% followed closely by GI4 with 71%.

medications by GI

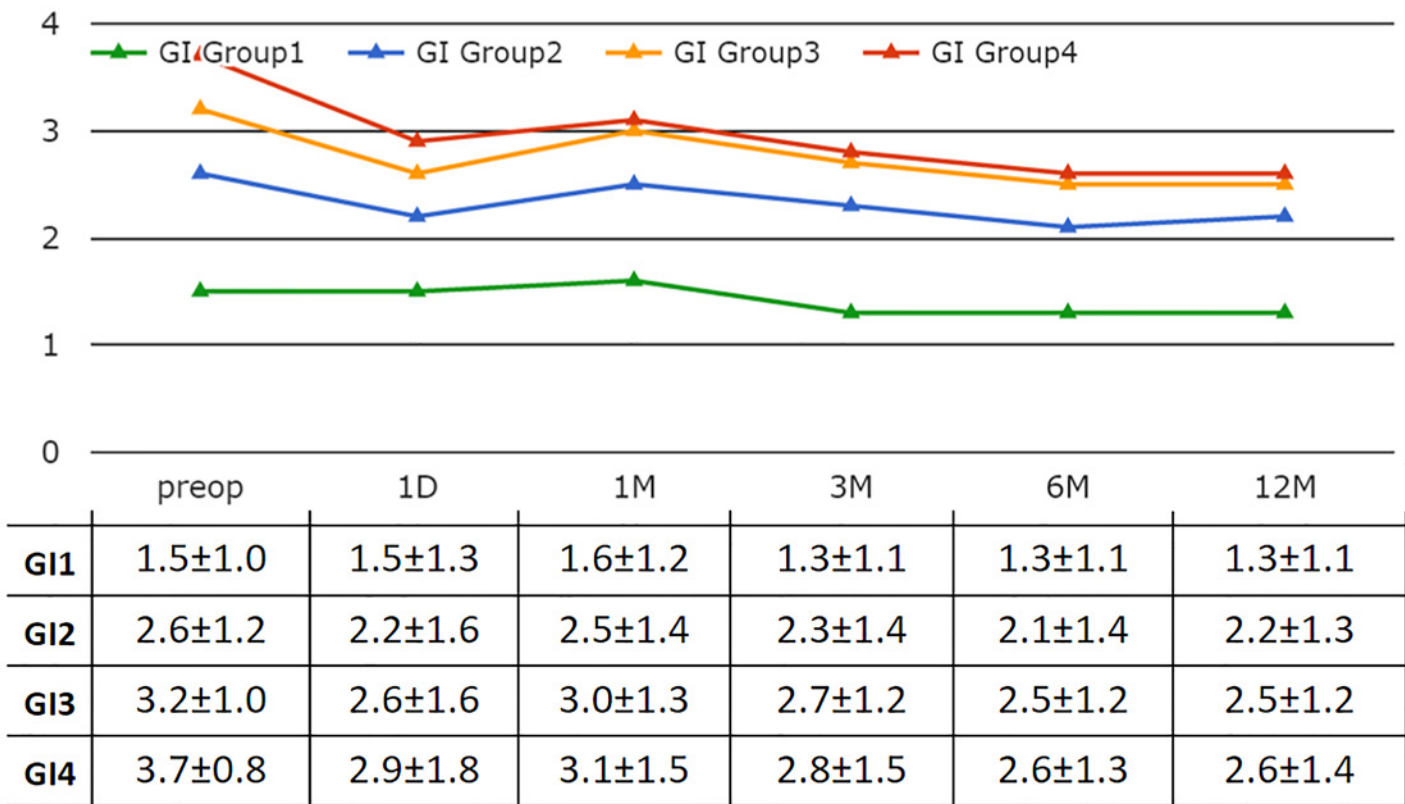


Fig 4. Mean number of medications by GI. While there was an overall decrease in the number of medications in all groups, GI3 and GI4 showed the most significant changes ($p < 0.05$) after 6 months postoperatively.

doi:10.1371/journal.pone.0151926.g004

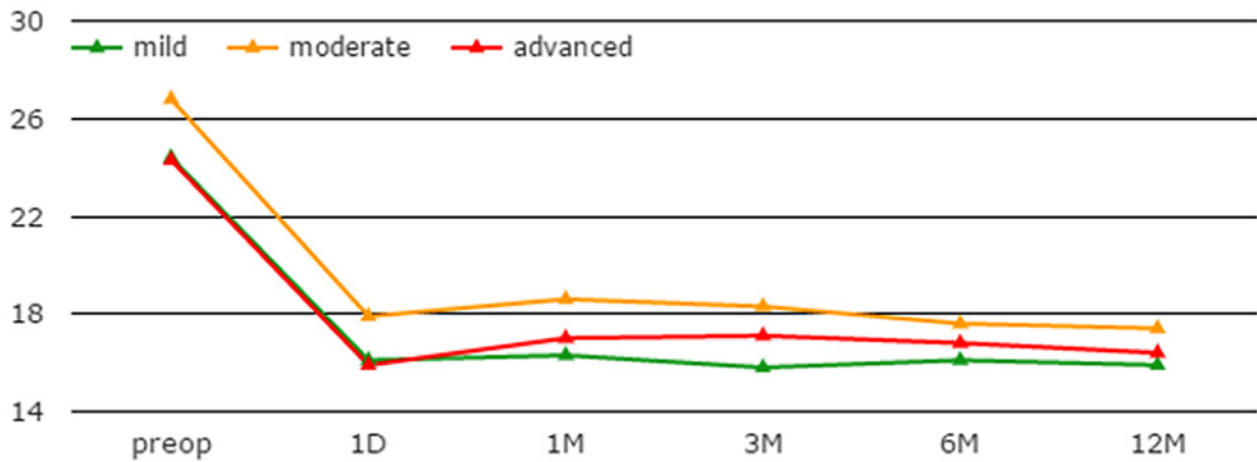
Univariate linear regression (Table 2), which was performed first, identified age, male gender, Hispanic ethnicity, diagnosis of pseudoexfoliation and steroid induced glaucoma, and C/D ratio to be most significant. These were included in the multivariate regression.

In the multivariate regression analysis (Table 3), GI group, age, Hispanic ethnicity, steroid induced glaucoma, and C/D ratio were found to be significantly associated with IOP reduction. For patients that differ in GI groups by 1, patients in the higher GI group are expected to have a further incremental IOP reduction of 2.95 ± 0.29 mmHg than patients in the next lower GI group. Success rate at 12 months was 90%, 77%, 77%, and 71% for GI groups 1 to 4. Log-rank test indicated a statistically significant success rate difference between GI groups. Patients in lower GI groups had a higher success rate than those in higher GI groups. The regression analysis had a power of 0.95.

The analogous analysis of the above of only primary open angle glaucoma patients indicated a similar greater IOP reduction of IOP with higher GI group (Fig 3B). We also determined the relative IOP reduction as a function of preoperative IOP (SI Fig). In analogy to the absolute reduction, the percentage decrease was the larger the higher the group index.

The results of the multivariate analysis for POAG only (Table 4) also found GI group to be associated with IOP reduction in a similar fashion as all patients (Table 3). After adjusting for gender, race and cup-to-disc ratio, cases in one GI group higher had an extra 2.98 ± 0.28 mmHg reduction in IOP than those in one GI group lower. Males experienced an additional 1.32 mmHg IOP reduction compared to females with the same GI group, race and C/D. Hispanics

IOP by VF



| | preop | 1D | 1M | 3M | 6M | 12M |
|----------|----------|----------|----------|----------|----------|----------|
| mild | 24.4±7.6 | 16.1±8.3 | 16.3±6.0 | 15.8±4.6 | 16.1±4.5 | 15.9±4.5 |
| moderate | 26.8±7.5 | 17.9±8.1 | 18.6±6.2 | 18.3±5.9 | 17.6±4.5 | 17.4±4.4 |
| advanced | 24.3±6.8 | 15.9±8.2 | 17.0±5.2 | 17.1±4.9 | 16.8±3.8 | 16.4±3.6 |

Fig 5. Intraocular pressure by visual field. While patients with moderate visual field loss had slightly higher IOPs prior to surgery, they were not different after day 1.

doi:10.1371/journal.pone.0151926.g005

had a greater IOP reduction of 4.18 mmHg when compared to African Americans after adjusting for all other variables. Patients with a higher C/D experienced a lesser IOP decrease than those with lower C/D after adjusting for GI group, gender and race.

Discussion

Despite recent efforts [8] to incorporate glaucoma severity into clinical practice to include treatment guidelines and outcome measures [9], most staging systems only consider visual field function [7], optic nerve damage [10] or a combination of visual field and retinal nerve fiber layer loss [11]. Richardson described an early system to combine treatment goals and modalities as well as functional damage into a glaucoma stage [12]. Because few topical glaucoma medications existed at that time, the number of topical medications was not a useful measure to gauge resistance to treatment and relate this to surgical success. Reduction of medication is now commonly used as a primary outcomes measure that is reported together with IOP, both in traditional glaucoma surgery [13] and in micro-incisional glaucoma surgeries [3,14]. A stratification of glaucoma surgical outcomes by glaucoma severity has not been formally examined and published. This study fills an important knowledge gap in by providing this data for a form of modern glaucoma surgery that is minimally invasive and has a considerably better safety profile [4].

The goal of this study was to examine whether clinical open angle glaucoma severity, as captured by a simple glaucoma index, is correlated to IOP reduction. Glaucoma with a high IOP despite several anti-glaucoma medications and worsening visual field may indicate a high treatment resistance or, more specifically, a highly reduced outflow facility. We hypothesized that eyes with a higher glaucoma index would show a larger IOP reduction following TM ablation

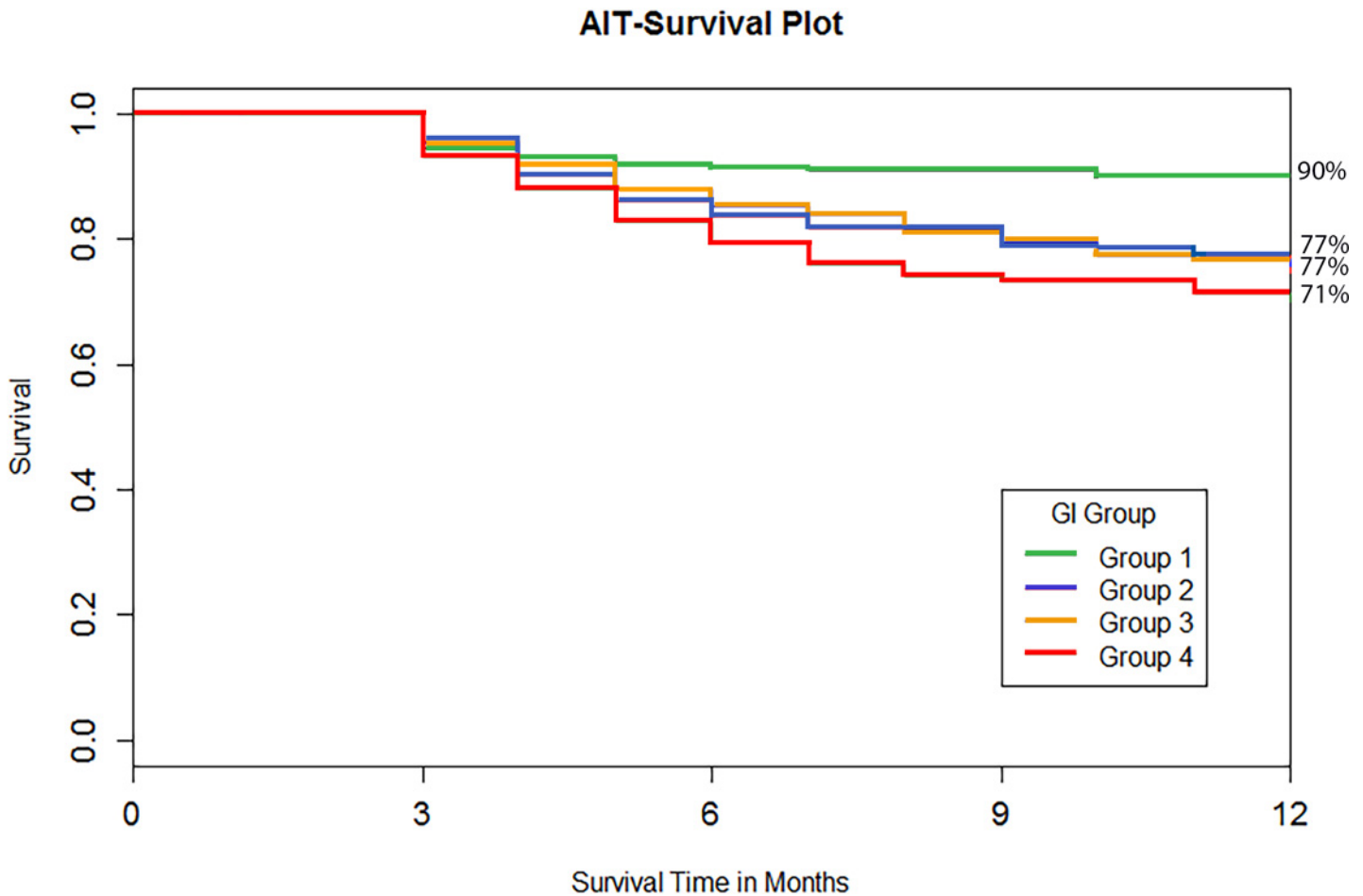


Fig 6. Success plot by glaucoma index. Subjects in GI1 had the best success while GI2 through GI4 were not significantly different.

doi:10.1371/journal.pone.0151926.g006

compared to eyes with less severe outflow resistance. This is indeed the case and consistent with the consensus that the TM is the site of the highest outflow resistance in most open angle glaucomas. While postoperative IOPs were highly similar in all GI groups, the most severe groups also experienced the largest reduction in medications. Such behavior is predicted by the Goldmann equation ($IOP = F/C + P_v - U$ (aqueous humor formation/facility + episcleral venous pressure—uveoscleral outflow)) because a large facility “C” (TM is absent) will result in a very small “F/C” so that IOP is only limited by the episcleral venous pressure and uveoscleral outflow. Consistent with this, two studies have reported a surprisingly high success rate of trabectome surgery after failed tube shunts [15] and after failed trabeculectomy [5].

As could be expected, GI1, indicative of mild glaucoma, had the best success of all groups. Interestingly, the remaining GI2 and 3 had an almost identical success course and GI4 was only slightly worse. The success rate observed here is very similar to that of other studies [16,17] or better [18]. This suggests that greater glaucoma severity may be associated with an increase in surgical failure rates.

The data presented here matches established glaucoma risk factors and provides some validation: GI1 had disproportionately more female patients. This may reflect the preponderance of women among patients with low pressure glaucoma [19,20]. Pseudoexfoliation and steroid induced glaucoma may be found more commonly in this population because of a relatively

Table 2. Univariate Regression.

| | Coefficient | Standard Error | p-value |
|----------------------------|-------------|----------------|---------|
| Age | -0.07 | 0.02 | <0.01 |
| Male | 1.55 | 0.58 | <0.01 |
| Ethnicity | | | |
| Asian | 0.89 | 1.29 | 0.49 |
| Caucasian | 1.25 | 1.28 | 0.33 |
| Hispanic | 4.44 | 1.62 | <0.01 |
| Other | 0.37 | 1.66 | 0.82 |
| Diagnosis | | | |
| Other | 2.45 | 1.44 | 0.09 |
| Pseudoexfoliation Glaucoma | 2.75 | 0.94 | <0.01 |
| Pigmentary Dispersion | 1.61 | 1.82 | 0.37 |
| Steroid Induced | 5.77 | 1.17 | <0.01 |
| C/D Ratio | -5.94 | 2.07 | <0.01 |
| Shaffer Grade | -1.87 | 1.16 | 0.17 |
| Lens | | | |
| Aphakic | -2.42 | 3.81 | 0.53 |
| Pseudophakic | -1.42 | 0.76 | 0.08 |

doi:10.1371/journal.pone.0151926.t002

Table 3. Multivariate Regression for All Open Angle Glaucomas.

| | Coefficient | Standard Error | p-value |
|----------------------------|-------------|----------------|---------|
| GI group | 3.02 | 0.30 | <0.01 |
| Age | -0.05 | 0.02 | 0.01 |
| Male | 0.52 | 0.55 | 0.35 |
| Ethnicity | | | |
| Asian | -1.20 | 1.17 | 0.31 |
| Caucasian | 1.21 | 1.19 | 0.31 |
| Hispanic | 4.33 | 1.49 | < 0.01 |
| Other | 0.06 | 1.46 | 0.97 |
| Diagnosis | | | |
| Other | 1.84 | 1.37 | 0.18 |
| Pigmentary Dispersion | 0.40 | 1.73 | 0.82 |
| Pseudoexfoliative Glaucoma | 1.78 | 0.92 | 0.06 |
| Steroid Induced | 3.37 | 1.32 | 0.02 |
| C/D Ratio | -9.79 | 2.06 | <0.01 |

doi:10.1371/journal.pone.0151926.t003

Table 4. Multivariate Regression for Primary Open Angle Glaucoma.

| | Coefficients | Standard Error | p-value |
|-----------|--------------|----------------|---------|
| GI group | 2.98 | 0.26 | <0.01 |
| Male | 1.32 | 0.60 | 0.03 |
| Race | | | |
| Asian | -0.88 | 1.12 | 0.43 |
| Caucasian | 0.64 | 1.06 | 0.54 |
| Hispanic | 4.18 | 1.45 | <0.01 |
| Other | -1.20 | 1.62 | 0.46 |
| C/D | -11.74 | 1.99 | <0.01 |

doi:10.1371/journal.pone.0151926.t004

more severe course either by damage or IOP, moving these forms of secondary open angle glaucoma into the higher GI groups. Patients with pseudoexfoliation typically have a larger IOP reduction after trabectome surgery [2] which may have contributed to the observed group behavior of a better pressure decrease in those groups in our study. GI4 had a significantly worse visual acuity than other groups which may be a result of commonly coinciding cataracts [21] that are still present in some of these patients but also with loss of visual acuity from glaucoma damage in advanced visual field loss. The later appears to be reflected in the significantly larger C/D ratio in GI4, the results of more advanced structural damage. Both regression analyses are reflective of the demographic and biometric observations and also point to Hispanic ethnicity as a group that is at an increased risk [22].

Limitations of this study are the use of categorical rather than continuous data for baseline IOP and a simplified stratification of glaucoma severity. We did this to avoid progressive underrating of glaucoma severity in the low pressure glaucoma range when raw data was used. The relatively large number of patients analyzed here and equal group sizes allowed to apply meaningful and valid statistical methods. Another shortcoming is that this study is retrospective in nature and may include bias for procedure selection. This is partially countered by relatively even patient numbers in all groups.

A recent study indicated that there is a tipping point during the course of glaucoma suggesting that more severe glaucoma may require more aggressive pressure lowering [23]. In this context, while this study can guide glaucoma surgeons to avoid risks inherent in traditional glaucoma surgeries, it is important to keep in mind that lowering intraocular pressure is a life-long commitment to manage an often relentless and progressive disease. A minimally invasive surgery may only be the initial step.

Supporting Information

S1 Fig. IOP reduction at 1 year as percentage of preoperative IOP. A) In all open angle glaucoma patients, a higher glaucoma index group assignment indicating more severe glaucoma was found to be associated with a larger IOP reduction (percentage +/- 95% confidence interval). B) Primary open angle glaucoma had highly similar IOP percentage reduction at 1 year (percentage +/- 95% confidence interval). (PDF)

Author Contributions

Conceived and designed the experiments: RTL NAL JSS. Performed the experiments: RTL PR NAL. Analyzed the data: RTL HP YD NAL JSS. Contributed reagents/materials/analysis tools: NAL JSS. Wrote the paper: RTL PR HP YD JSS NAL.

References

1. Ethier CR, Kamm RD, Palaszewski BA, Johnson MC, Richardson TM. Calculations of flow resistance in the juxtacanalicular meshwork. *Invest Ophthalmol Vis Sci.* 1986; 27: 1741–1750. PMID: [3793404](#)
2. Ting JLM, Damji KF, Stiles MC, Trabectome Study Group. Ab interno trabeculectomy: outcomes in exfoliation versus primary open-angle glaucoma. *J Cataract Refract Surg.* Elsevier; 2012; 38: 315–323. doi: [10.1016/j.jcrs.2011.08.043](#) PMID: [22322166](#)
3. Bussell II, Kaplowitz K, Schuman JS, Loewen NA, Trabectome Study Group. Outcomes of ab interno trabeculectomy with the trabectome by degree of angle opening. *Br J Ophthalmol.* 2015; 99: 914–919. doi: [10.1136/bjophthalmol-2014-305577](#) PMID: [25336577](#)
4. Kaplowitz K, Schuman JS, Loewen NA. Techniques and outcomes of minimally invasive trabecular ablation and bypass surgery. *Br J Ophthalmol.* 2014; 98: 579–585. doi: [10.1136/bjophthalmol-2013-304256](#) PMID: [24338085](#)

5. Bussel II, Kaplowitz K, Schuman JS, Loewen NA, Group TS, Others. Outcomes of ab interno trabeculectomy with the trabectome after failed trabeculectomy. *Br J Ophthalmol*. BMJ Publishing Group Ltd.; 2014; 99: 258–262. doi: [10.1136/bjophthalmol-2013-304717](https://doi.org/10.1136/bjophthalmol-2013-304717) PMID: [25170064](https://pubmed.ncbi.nlm.nih.gov/25170064/)
6. Stamper RL. CHAPTER 7 –Clinical interpretation of gonioscopic findings. In: Stamper RL, Lieberman MF, Drake M V, editors. *Becker-Shaffer's Diagnosis and Therapy of the Glaucomas* (Eighth Edition). Mosby; 2009. pp. 78–90.
7. Ng M, Sample PA, Pascual JP, Zangwill LM, Girkin CA, Liebmann JM, et al. Comparison of visual field severity classification systems for glaucoma. *J Glaucoma*. 2012; 21: 551–561. doi: [10.1097/IJG.0b013e31821dac66](https://doi.org/10.1097/IJG.0b013e31821dac66) PMID: [21878817](https://pubmed.ncbi.nlm.nih.gov/21878817/)
8. Buck CJ. ICD-10-CM, 2015: Physician Professional Edition. Elsevier Health Sciences; 2015.
9. Ronald L. Fellman RL, Mattox CG, Ross KM, Vicchilli S. Know the New Glaucoma Staging Codes. *Eye Net Magazine*. 10/2011; Available: <http://www.aaopt.org/eyenet/article/know-new-glaucoma-staging-codes?october-2011>
10. Spaeth GL, Lopes JF, Junk AK, Grigorian AP, Henderer J. Systems for staging the amount of optic nerve damage in glaucoma: a critical review and new material. *Surv Ophthalmol*. 2006; 51: 293–315. PMID: [16818081](https://pubmed.ncbi.nlm.nih.gov/16818081/)
11. Medeiros FA, Zangwill LM, Bowd C, Mansouri K, Weinreb RN. The structure and function relationship in glaucoma: implications for detection of progression and measurement of rates of change. *Invest Ophthalmol Vis Sci*. 2012; 53: 6939–6946. doi: [10.1167/iovs.12-10345](https://doi.org/10.1167/iovs.12-10345) PMID: [22893677](https://pubmed.ncbi.nlm.nih.gov/22893677/)
12. Heilmann K, Richardson KT. *Glaucoma: Conceptions of a Disease: Pathogenesis, Diagnosis, Therapy*. W. B. Saunders; 1978.
13. Gedde SJ, Schiffman JC, Feuer WJ, Herndon LW, Brandt JD, Budenz DL. Treatment Outcomes in the Tube Versus Trabeculectomy (TVT) Study After Five Years of Follow-up. *Am J Ophthalmol*. Elsevier; 2012; 153: 789–803.e2. doi: [10.1016/j.ajo.2011.10.026](https://doi.org/10.1016/j.ajo.2011.10.026) PMID: [22245458](https://pubmed.ncbi.nlm.nih.gov/22245458/)
14. Samuelson TW, Katz LJ, Wells JM, Duh Y-J, Giamporcaro JE, US iStent Study Group. Randomized evaluation of the trabecular micro-bypass stent with phacoemulsification in patients with glaucoma and cataract. *Ophthalmology*. Elsevier; 2011; 118: 459–467. doi: [10.1016/j.ophtha.2010.07.007](https://doi.org/10.1016/j.ophtha.2010.07.007) PMID: [20828829](https://pubmed.ncbi.nlm.nih.gov/20828829/)
15. Mosaed S, Chak G, Haider A, Lin KY, Minckler DS. Results of Trabectome Surgery Following Failed Glaucoma Tube Shunt Implantation: Cohort Study. *Medicine*. 2015; 94: e1045. doi: [10.1097/MD.0000000000001045](https://doi.org/10.1097/MD.0000000000001045) PMID: [26222842](https://pubmed.ncbi.nlm.nih.gov/26222842/)
16. Kaplowitz K, Bussel II, Honkanen R, Schuman JS, Loewen NA. Review and meta-analysis of ab-interno trabeculectomy outcomes. *Br J Ophthalmol*. 2016; doi: [10.1136/bjophthalmol-2015-307131](https://doi.org/10.1136/bjophthalmol-2015-307131)
17. Parikh HA, Bussel II, Schuman JS, Brown EN, Loewen NA. Coarsened Exact Matching of Phaco-Trabectome to Trabectome in Phakic Patients: Lack of Additional Pressure Reduction from Phacoemulsification. *PLoS One*. 2016; 11: e0149384. doi: [10.1371/journal.pone.0149384](https://doi.org/10.1371/journal.pone.0149384) PMID: [26895293](https://pubmed.ncbi.nlm.nih.gov/26895293/)
18. Jea SY, Francis BA, Vakili G, Filippopoulos T, Rhee DJ. Ab interno trabeculectomy versus trabeculectomy for open-angle glaucoma. *Ophthalmology*. 2012; 119: 36–42. doi: [10.1016/j.ophtha.2011.06.046](https://doi.org/10.1016/j.ophtha.2011.06.046) PMID: [21982416](https://pubmed.ncbi.nlm.nih.gov/21982416/)
19. Krupin T, Liebmann JM, Greenfield DS, Rosenberg LF, Ritch R, Yang JW, et al. The Low-pressure Glaucoma Treatment Study (LoGTS) study design and baseline characteristics of enrolled patients. *Ophthalmology*. 2005; 112: 376–385. PMID: [15745762](https://pubmed.ncbi.nlm.nih.gov/15745762/)
20. Drance S, Anderson DR, Schulzer M, Collaborative Normal-Tension Glaucoma Study Group. Risk factors for progression of visual field abnormalities in normal-tension glaucoma. *Am J Ophthalmol*. Elsevier; 2001; 131: 699–708. PMID: [11384564](https://pubmed.ncbi.nlm.nih.gov/11384564/)
21. Chandrasekaran S, Cumming RG, Rochtchina E, Mitchell P. Associations between elevated intraocular pressure and glaucoma, use of glaucoma medications, and 5-year incident cataract: the Blue Mountains Eye Study. *Ophthalmology*. 2006; 113: 417–424. PMID: [16458969](https://pubmed.ncbi.nlm.nih.gov/16458969/)
22. Vajaranant TS, Wu S, Torres M, Varma R. The changing face of primary open-angle glaucoma in the United States: demographic and geographic changes from 2011 to 2050. *Am J Ophthalmol*. 2012; 154: 303–314.e3. doi: [10.1016/j.ajo.2012.02.024](https://doi.org/10.1016/j.ajo.2012.02.024) PMID: [22541661](https://pubmed.ncbi.nlm.nih.gov/22541661/)
23. Wollstein G, Kagemann L, Bilnick RA, Ishikawa H, Folio LS, Gabriele ML, et al. Retinal nerve fibre layer and visual function loss in glaucoma: the tipping point. *Br J Ophthalmol*. 2012; 96: 47–52. doi: [10.1136/bjo.2010.196907](https://doi.org/10.1136/bjo.2010.196907) PMID: [21478200](https://pubmed.ncbi.nlm.nih.gov/21478200/)