

Contact lens warpage: Lost but found

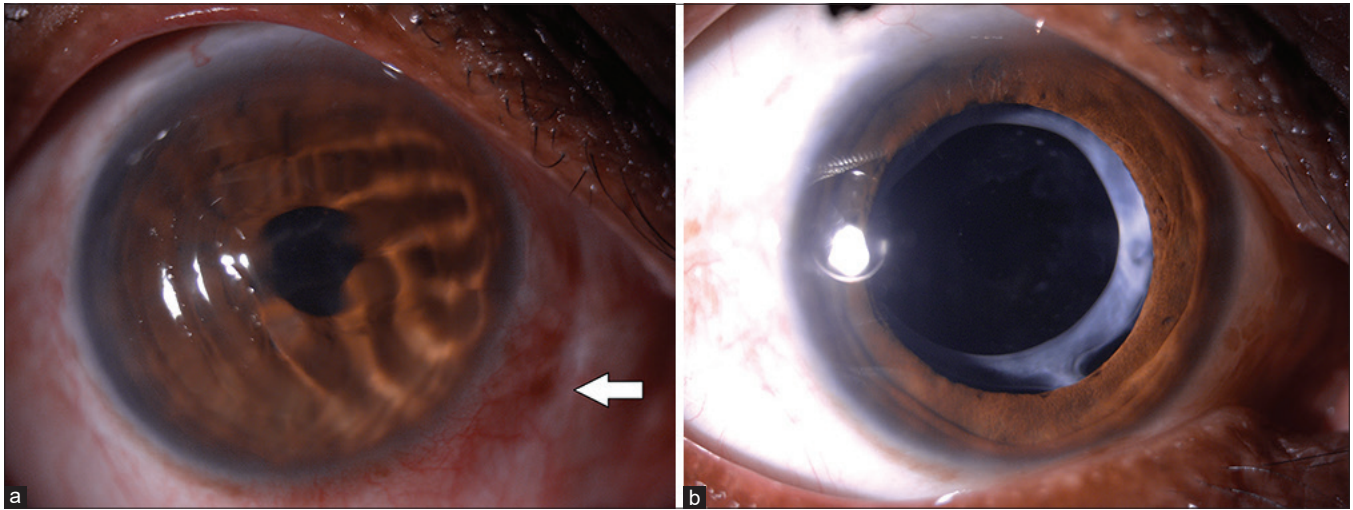


Figure 1: (a) Right eye anterior segment photography showing wavy distortion of cornea suggestive of corneal warpage due to hydrogel soft contact lens. (b) Right eye anterior segment photography 3 weeks later showing complete resolution of corneal warpage

A 66-year-old male presented with the gradual diminution of vision in the right eye (OD). The previous treatment record revealed lamellar flap wash with bandage contact lens placement in the OD 1 year back. On examination, the best-corrected visual acuity in OD was 20/200. Cornea revealed concentric wavy distortions underneath a hydrogel soft contact lens [Fig. 1a]. The patient was not aware of the contact lens. After the lens removal, cornea resumed normal shape within 3 weeks [Fig. 1b]. This is a rare case of gross corneal surface warpage.^[1] The change in corneal contour may be the result of either mechanical deformation, chronic metabolic insult, or a combination of these.^[2]

Declaration of patient consent

The authors certify that they have obtained all appropriate patient consent forms. In the form the patient(s) has/have given his/her/their consent for his/her/their images and other clinical information to be reported in the journal. The patients understand that their names and initials will not be published and due efforts will be made to conceal their identity, but anonymity cannot be guaranteed.

Financial support and sponsorship

Nil.

Conflicts of interest

There are no conflicts of interest.

Josephine Christy, Bharat Gurnani, Kirandeep Kaur, Fredrick Moutappa

Aravind Eye Hospital and Post Graduate Institute of Ophthalmology, Pondicherry, India

Correspondence to: Dr. Bharat Gurnani, Cornea Fellow, Aravind Eye Hospital and Post Graduate Institute of Ophthalmology, Pondicherry - 605 007, India. E-mail: drgurnanibharat25@gmail.com

References

- Schorrack M. Hydrogel contact lens induced corneal warpage. *Cont Lens Anterior Eye* 2003;26:153-9.
- Asbell PA, Wasserman D. Contact lens-induced corneal warpage. *Int Ophthalmol Clin* 1991;31:121-6.

This is an open access journal, and articles are distributed under the terms of the Creative Commons Attribution-NonCommercial-ShareAlike 4.0 License, which allows others to remix, tweak, and build upon the work non-commercially, as long as appropriate credit is given and the new creations are licensed under the identical terms.

Access this article online	
Quick Response Code:	Website: www.ijo.in
	DOI: 10.4103/ijo.IJO_2034_19

Cite this article as: Christy J, Gurnani B, Kaur K, Moutappa F. Contact lens warpage: Lost but found. *Indian J Ophthalmol* 2020;68:1662.