



Role of Serum cartilage oligomeric matrix protein (COMP) in the diagnosis of rheumatoid arthritis (RA): A case–control study

Fengxia Liu¹, Xijuan Wang¹, Xude Zhang¹,
Cuiai Ren² and Jie Xin³

Abstract

Objective: To analyse the role of serum cartilage oligomeric matrix protein (COMP) levels in the differential diagnosis of rheumatoid arthritis (RA).

Methods: This case–control study analysed the clinical and laboratory characteristics of patients with RA and healthy control subjects. The diagnostic ability of COMP for RA was evaluated by comparing it with anti-cyclic citrullinated peptide antibody levels. The sensitivity, specificity, positive and negative predictive values were calculated.

Results: The study enrolled 82 patients with RA and 34 healthy control subjects. The serum COMP level was significantly higher in patients with RA compared with control subjects (mean \pm SD 29.51 \pm 9.21 ng/ml versus 17.85 \pm 5.55 ng/ml, respectively). The serum COMP level was significantly higher in patients with active RA compared with patients with RA in remission (mean \pm SD 33.08 \pm 8.80 ng/ml versus 24.94 \pm 7.65 ng/ml, respectively). The cut-off value for COMP to discriminate patients with RA from healthy individuals was 21.51 ng/ml (sensitivity 0.817, specificity 0.882, positive predictive value 0.944, negative predictive value 0.667, and accuracy 0.836).

Conclusion: The serum COMP level has the potential to be used as a biological marker for differentiating between patients with RA and healthy individuals.

Keywords

Cartilage oligomeric matrix protein, rheumatoid arthritis, anti-cyclic citrullinated peptide antibody

Date received: 6 September 2015; accepted: 25 February 2016

¹Department of Rheumatology and Immunology, Weifang People's Hospital, Weifang City, Shandong Province, China

²Department of Haematology, Weifang People's Hospital, Weifang City, Shandong Province, China

³Department of Orthopaedic Surgery, Weifang People's Hospital, Weifang City, Shandong Province, China

Corresponding author:

Jie Xin, Department of Orthopaedic Surgery, Weifang People's Hospital, 151 Guangwen Street, Kuiwen District, Weifang City, Shandong Province 261000, China.

Email: aqlfx@163.com



Introduction

Rheumatoid arthritis (RA) is a complex, chronic autoimmune inflammatory joint disease that is characterized by progressive erosive symmetrical joint destruction and systemic extra-articular manifestations, affecting approximately 0.5%–1.0% of the adult population worldwide.¹ Research has shown that the most significant characteristic of RA is proliferative and inflammatory synovitis of the peripheral joints, which is accompanied by progressive and irreversible damage to the articular cartilage and bone that may cause joint deformity and disability.^{2,3} It is very important that diagnosis and treatment are initiated in the early stages of RA, because this has been shown to be very valuable in slowing down progression of the disease.^{4,5} Currently, the diagnosis and staging of patients with RA is mainly based on the clinical symptoms, imaging results and some traditional laboratory tests.^{6,7} These methods are often used to diagnose RA during the middle-to-late disease period when treatment is not able to effectively control the progressive articular and bone damage caused by the disease.⁸ Research has confirmed that some biological markers reflecting cartilage degradation provide the possibility of early diagnosis.⁷ Biomarkers may serve a wide range of purposes in clinical practice, but biomarker research must be the subject of a quantitative surrogate validation schema to ensure clinical and statistical validity.^{9,10}

Cartilage oligomeric matrix protein (COMP), a cartilage-derived marker of cartilage breakdown, is a prognostic factor in early RA.^{7,11,12} It can be detected in biological fluids, including synovial fluid and serum in patients with RA and other diseases, such as osteoarthritis and articular trauma.⁷ COMP is an extracellular matrix protein mainly localized to tendon, cartilage, and pericartilage tissues.¹³ During RA progression, the pathophysiological processes involve the digestion and dissolution

of the intercellular components of the connective tissue by protease-derived hydrolysis.¹⁴ Inflammatory synovium has been considered as a potential tissue source of COMP since the molecule has been detected in the synovium in both RA and osteoarthritis.^{15–18} A study concluded that serum COMP was a novel indicator for the diagnosis of early RA and a promising tool to identify patients with significant joint damage.¹⁷ Some studies have demonstrated that COMP has the potential to be a diagnostic and prognostic indicator, a marker of the disease severity and a marker of the effect of treatment.^{12,19}

In contrast, there are opposing views about both (i) the potential use of COMP as a biological marker for RA diagnosis and prognosis, and (ii) the sensitivity and specificity of COMP in early RA diagnosis,^{20–22} which highlight the need for a greater understanding of the biological processes involved in RA disease progression. It also remains unknown as to whether there is an optimal cut-off value for COMP that is able to discriminate patients with RA from healthy subjects, which would be a key feature for standardizing the use of COMP for the diagnosis of RA. This present case-control study investigated the role of COMP in the diagnosis of patients with RA by comparing it with anti-cyclic citrullinated peptide antibody (anti-CCP) level, which is another laboratory marker that has been shown to be valuable in the early diagnosis and prognosis of RA.^{23,24}

Patients and methods

Study participants

This case-control study enrolled consecutive patients with RA, who satisfied the revised criteria for RA recommended by the 2010 American College of Rheumatology,²⁵ between January 2011 and February 2013 in the Department of Rheumatology and Immunology, Weifang People's Hospital,

Weifang City, Shandong Province, China. The inclusion criteria were as follows: (i) confirmed diagnosis of RA; (ii) RA routine treatment naïve; (iii) ≥ 18 years; (iv) willingness to participate in the study; (v) resident in Weifang City for >6 months; and (vi) lack of osteoarthritis or any other inflammatory articular diseases. The exclusion criteria were as follows: (i) patients with osteoarthritis, rheumatic arthritis, or gouty arthritis; (ii) those who had received RA routine treatment; (iii) <18 years; (iv) resident in Weifang City ≤ 6 months; (v) did not agree to participate in the study; (vi) suffered from a severe form of the disease or other severe diseases and could not participate in the study.

The healthy control subjects were recruited from the Health Evaluation Clinic of Weifang People's Hospital during the same study period. They were healthy subjects with no history of rheumatic disease or autoimmune disease, no other history of infectious or chronic inflammatory autoimmune diseases and they were unrelated to the patients. They were matched to the patients with RA based on sex and age (± 2 years).

The study protocol was approved by the Ethical Committee of Weifang People's Hospital (no. WRYL11016). Participants were interviewed and informed of the nature of the study. Each study participant, or their legal representative, provided written informed consent.

Physical examinations and laboratory tests

All study participants underwent a routine medical history and physical examination, which were undertaken by three Associate Chief Physicians (F.L., X.W. & X.Z.) under the supervision of an independent rheumatologist in the Department of Rheumatology and Immunology, Weifang People's Hospital. The patients' age, disease duration, the duration of morning stiffness, joint tenderness index, joint swelling index, joint activity pain

index, and joint resting pain index were recorded.²⁶ X-rays of the hands were undertaken using an Axiom Aristos VX Plus digital radiography system (Siemens, Erlangen, Germany) in order to identify the extent of joint bone damage so that the stage of the disease could be recorded. The stages of joint bone damage were defined as follows (where * identifies items that are necessary for classification):^{27,28} stage I (early stage) includes (i) no abnormal change on X-ray examination and (ii) visible osteoporosis under the joint surface; stage II (interim stage) includes *(i) regional osteoporosis, with mild cartilage damage, with or without mild subchondral bone destruction, *(ii) visible restricted joint activities with no joint deformities, (iii) adjacent muscle atrophy, and (iv) abarticular soft tissue lesions, e.g. nodules and tenosynovitis; stage III (severe stage) includes *(i) osteoporosis, bone and cartilage destruction, *(ii) joint deformities, such as subluxation, feet lateral deflection, with no joint stiffness, (iii) a wide range of muscle atrophy, and (iv) abarticular soft tissue lesions with nodules and tenosynovitis; and stage IV (late stage) includes *(i) joint stiffness and (ii) each item included in stage III.

A 5-ml sample of venous blood was collected into IMPROVACUTER® EDTA K2 tubes (IMPROVE MEDICAL Technology, Guangzhou, China) before the patients started treatment with prednisolone and/or disease modifying anti-rheumatic drugs. Blood samples were centrifuged at 2000 g at room temperature for 20 min in a BY-320C centrifuge (Baiyang Medical Instrument Company, Beijing, China) and stored at -80°C until analysis. The blood samples were analysed by routine methods for erythrocyte sedimentation rate (ESR) (Westergren's blood sedimentation tube; Hull Medical Science and Technology, Hefei, China), platelet count (PLT) (SYSMEX XE-2100™ Automated Haematology System; SYSMEX, Kobe, Japan) and C-reactive protein (CRP) (IMAGE® 800 Turbidimetric

Inhibition Immunoassay System; Beckman Coulter, Brea, CA, USA). Rheumatoid factor (RF) was measured using the latex agglutination test (Rheumatoid Factor Reagent Kit; Rongchuan Biotechnology Company, Shanghai, China) and a positive titre was $>1/20$. Anti-CCP levels were analysed using an ImmunoscanCCPlus[®] enzyme-linked immunosorbent assay (ELISA) (Euro Diagnostica, Malmö, Sweden) according to the manufacturer's instructions and the minimum detectable concentration was 0.1 U/l. Serum COMP levels were measured using the Human COMP ELISA assay (Kamiya Biomedical Company, Seattle, WA, USA) according to the manufacturer's instructions. The minimum detectable concentration was 0.4 ng/ml, and the intra-assay and inter-assay coefficients of variation were both $<5\%$.

Patient subgroups

The patients with RA were divided into two groups according to the information obtained from the physical examination, laboratory tests, and X-ray imaging.^{6,25,27} Patients were considered to have active disease if four of five of the following items were satisfied: (i) there was moderate joint pain at rest; (ii) the duration of morning stiffness was ≥ 1 h; (iii) there was swelling of $>$ three joints; (iv) there was pressing pain in $>$ eight joints; (v) ESR > 30 mm/h or CRP > 8 mg/l. Patients were considered to be in remission if \geq five of the following items were satisfied and had been in existence for ≥ 2 months: (i) the duration of morning stiffness was ≤ 15 min; (ii) there is no lack of strength; (iii) there was no joint pain at rest; (iv) there was no joint pain or pressing pain when undertaking activity; (v) there was no joint or sheath soft tissue swelling; (vi) ESR ≤ 30 mm/h (for females) or ≤ 20 mm/h (for males).

The patients with RA were divided into two groups according to the information

that was obtained from the X-ray imaging of the patient's hands: patients with joint bony damage as demonstrated by abnormal changes observed on the X-ray examination (stages II–IV); and patients without joint bony damage as confirmed by the lack of abnormal changes on the X-ray examination (stage I).²⁷

Statistical analyses

All statistical analyses were performed using the SPSS[®] statistical package, version 19.0 (SPSS Inc., Chicago, IL, USA) for Windows[®]. Continuous data are presented as the mean \pm SD. Differences in continuous variables between groups were determined using Student's *t*-test or the Mann–Whitney *U*-test. Categorical data are presented as *n* of patients (%). Differences between categorical variables were analysed using Pearson's χ^2 -test or Fisher's exact test. The sensitivity, specificity, and positive and negative predictive values (PPV and NPV, respectively) of COMP and anti-CCP for the diagnosis of RA were assessed. Optimum cut-off values are calculated to optimize sensitivity and specificity (i.e. the Youden index). Receiver-operating characteristic (ROC) curves were plotted and the areas under the ROC curves were calculated to assess the performance of each marker to distinguish RA. A *P*-value < 0.05 was considered statistically significant (two-tailed).

Results

This case–control study enrolled 82 patients with RA and 34 healthy control subjects. There was no significant difference in the mean \pm SD age of the group of patients with RA compared with the control group (49.93 ± 11.15 versus 47.60 ± 15.49 years, respectively; Student's *t*-test). Among the 82 patients with RA, the mean \pm SD disease duration was 3.79 ± 5.45 years, the mean \pm SD duration of morning stiffness was

1.47 ± 1.67 h, the mean ± SD joint tenderness index score was 11.91 ± 16.82, the mean ± SD joint swelling index score was 10.37 ± 14.16, the mean ± SD joint activity pain index score was 17.93 ± 20.83, and the mean ± SD joint resting pain index score was 3.39 ± 7.54.

The baseline laboratory characteristics of the study population are presented in Table 1. The serum COMP and anti-CCP antibody levels were significantly higher in patients with RA compared with the control group ($P < 0.0001$ for both comparisons). There were no significant difference in the ESR, CRP, PLT or RF levels between patients with RA and healthy control subjects.

The serum COMP levels were compared among different subgroups of patients with RA and healthy control subjects (Table 2). The serum COMP levels were significantly higher in the patients with RA compared with the healthy control subjects ($P < 0.0001$). The serum COMP levels were significantly higher in the patients with RA with active disease compared with patients

with RA in remission ($P < 0.0001$). The serum COMP levels were significantly higher in the patients with RA in remission compared with healthy control subjects ($P < 0.0001$). The serum COMP levels were significantly higher in the patients with RA with joint bony damage compared with patients with RA without joint bony damage ($P = 0.0156$). There was no significant difference in the serum COMP level between male and female patients with RA.

The ROC of COMP and anti-CCP for discriminating RA patients from healthy control subjects were analysed. The areas under the curves (AUC) for COMP (AUC 0.864; 95% confidence interval [CI] 0.790, 0.937) was significantly greater than that of anti-CCP (AUC 0.764; 95% CI 0.674, 0.854; $P = 0.0015$) (Figure 1). Optimal cut-off values for COMP and anti-CCP were 21.51 ng/ml and 34.76 RU/ml, respectively. At these cut-off values, diagnostic validity such as sensitivity, specificity, positive predictive value, negative predictive value, and accuracy were calculated (Table 3).

Table 1. Baseline laboratory characteristics for patients with rheumatoid arthritis (RA) and healthy control subjects who participated in a study to determine the role of serum cartilage oligomeric matrix protein (COMP) levels in the diagnosis of RA.

Characteristic	Patients with RA <i>n</i> = 82	Healthy control subjects <i>n</i> = 34	Statistical significance ^a
COMP, ng/ml	29.51 ± 9.21	17.85 ± 5.55	$P < 0.0001$
ESR, mm/h	10.94 ± 6.85	8.53 ± 6.53	NS
CRP, mg/dl	4.90 ± 3.30	3.87 ± 2.76	NS
PLT, × 10 ⁹ /l	187.60 ± 98.76	164.10 ± 82.70	NS
RF, IU/ml	125.10 ± 65.84	101.50 ± 60.36	NS
Anti-CCP, RU/ml	65.57 ± 58.62	21.48 ± 24.45	$P < 0.0001$

Data presented as mean ± SD.

^aDifferences in continuous variables between groups were determined using Student's *t*-test or the Mann-Whitney *U*-test.

ESR, erythrocyte sedimentation rate; CRP, C-reactive protein; PLT, platelet count; RF, rheumatoid factor; CCP, cyclic citrullinated peptide; NS, no significant between-group difference ($P \geq 0.05$).

Table 2. Comparison of serum cartilage oligomeric matrix protein (COMP) levels among different subgroups of patients with rheumatoid arthritis (RA) and healthy control subjects.

Subgroups	<i>n</i>	COMP, ng/ml	Statistical significance ^a
Patients with RA	82	29.51 ± 9.21	<i>P</i> < 0.0001
Healthy control subjects	34	17.85 ± 5.55	
Male patients with RA	21	27.01 ± 10.25	NS
Female patients with RA	61	30.37 ± 8.75	
Patients with active RA	46	33.08 ± 8.80	<i>P</i> < 0.0001
Patients with RA in remission	36	24.94 ± 7.65	
Patients with RA in remission	36	24.94 ± 7.65	<i>P</i> < 0.0001
Healthy control subjects	34	17.85 ± 5.55	
Patients with RA with joint bony damage	44	31.77 ± 8.21	<i>P</i> = 0.0156
Patients with RA without joint bony damage	38	26.88 ± 9.71	

Data presented as mean ± SD.

^aDifferences in continuous variables between groups were determined using Student's *t*-test or the Mann–Whitney *U*-test. NS, no significant between-group difference (*P* ≥ 0.05).

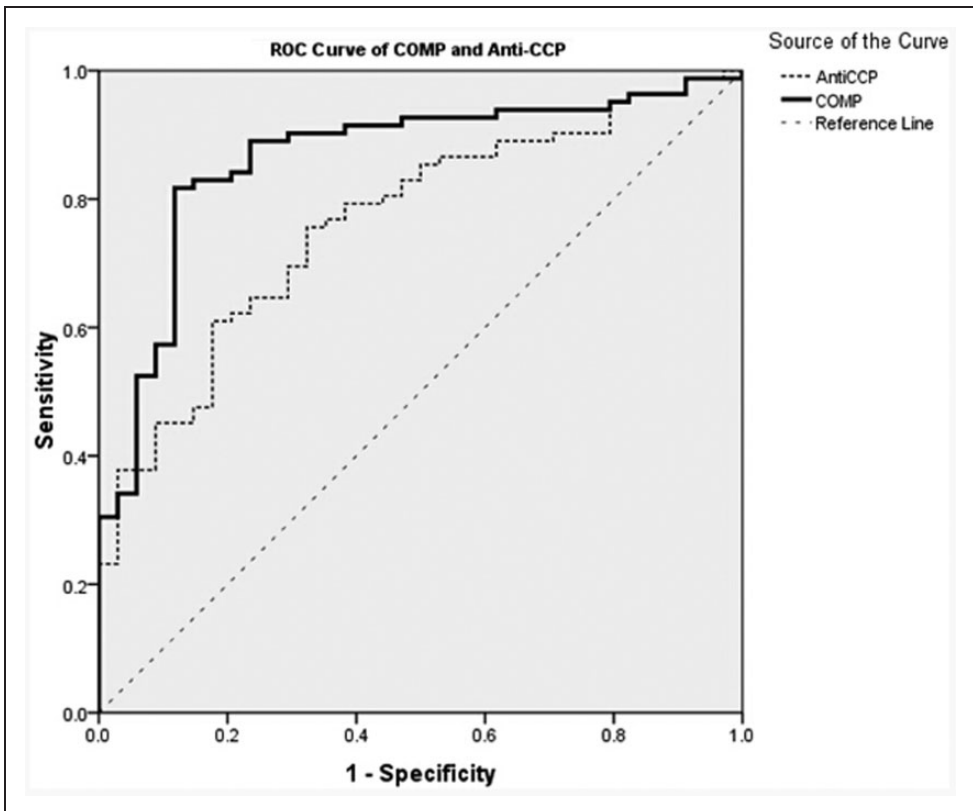


Figure 1. Receiver operating characteristic curve analysis for serum cartilage oligomeric matrix protein (COMP) and anti-cyclic citrullinated peptide antibody (anti-CCP) calculated using data from patients with rheumatoid arthritis (*n* = 82) and healthy control subjects (*n* = 34).

Table 3. Diagnostic validity of serum cartilage oligomeric matrix protein (COMP) and anti-cyclic citrullinated peptide antibody (anti-CCP) in differentiating patients with rheumatoid arthritis ($n = 82$) from healthy control subjects ($n = 34$).

Marker	Cut-off value	AUC (95% CI)	Sensitivity	Specificity	PPV	NPV	Accuracy
COMP	21.51 ng/ml	0.864 (0.790, 0.937)	0.817	0.882	0.944	0.667	0.836
Anti-CCP	34.76 RU/ml	0.764 (0.674, 0.854)	0.610	0.824	0.893	0.467	0.672

AUC, area under the curve; CI, confidence interval; PPV, positive predictive value; NPV, negative predictive value.

Discussion

The main findings of this present study include the following: (i) serum COMP levels were significantly higher in patients with RA compared with healthy control subjects; (ii) serum COMP levels were significantly higher in patients with active RA compared with patients with RA in remission; (iii) serum COMP levels in patients with RA who also had joint bony damage were significantly higher compared with patients with RA who did not have joint bony damage; and (iv) a serum COMP level of 21.51 ng/ml was the optimal cut-off value for discriminating between patients with RA and healthy control subjects. Based on the above findings, this present study demonstrated that COMP could be a useful laboratory marker for discriminating between patients with RA and healthy individuals, and it could also be used to judge the severity of the disease; findings that were in accordance with other research.⁸ A previous study concluded that serum COMP was significantly higher in patients with RA compared with healthy subjects; and it was also significantly higher in patients with joint destruction compared with those patients in the early stages of the disease, but its levels were affected by age, disease duration, and body mass index.²⁹ In contrast, another study reported a sensitivity of 15%–48% and a specificity of 66%–69% for COMP as a marker for RA.²⁰ It has also been suggested that the usefulness of testing for COMP as a marker of joint damage should be confirmed by additional and

preferably longitudinal studies.²¹ In addition, this present study is the first to demonstrate the optimal cut-off value of COMP for discriminating between patients with RA and healthy individuals.

This present study found that the serum COMP level was not only a useful laboratory marker for discriminating between patients with RA and healthy control subjects, but it also discriminated between the different stages of joint bone damage. Other methods exist for the diagnosis of RA and for the determination of disease severity, such as RF, CRP, ESR, anti-CCP and bone imaging.^{30,31} In this present study, the RF, CRP, ESR and anti-CCP levels were also measured. Although the anti-CCP levels were significantly higher in the patients with RA compared with the healthy control subjects, its predictive accuracy was not as high as that determined for COMP (0.672 versus 0.836, respectively). There were no significant differences in RF, CRP, and ESR between the patients with RA and the healthy control subjects. Anti-CCP levels demonstrated a high specificity (0.824) and low sensitivity (0.610) for discriminating between patients with RA and healthy control subjects. Another study reported that CRP and ESR may not reflect the early stage of bony damage in RA and their sensitivity and specialty were low when used for RA in clinical practice.³² The imaging features of bones often change during the bone destructive stages of RA and bony damage often causes deformation.⁷ Thus, an early diagnosis based on the results of a physical

examination, radiographs and ESR may not be useful for establishing a therapeutic strategy. Therefore, a method with high sensitivity and specificity is needed for the early stage evaluation of bone joint dysfunction.

In this present study, the serum COMP level demonstrated an acceptable diagnostic performance for discriminating between patients with RA and healthy control subjects. A COMP level of 21.51 ng/ml was the optimal cut-off value for discriminating RA patients from healthy individuals. The AUC of COMP to predict RA was high (0.864), and when using the COMP cut-off of 21.51 ng/ml to rule out and rule in the presence of RA, the percentage of correctly classified patients was 81.7% (i.e. sensitivity) and the percentage correctly classified as not having RA was 88.2% (i.e. specificity). However, it should be noted that COMP levels can be influenced by factors such as muscle mass, sex, age and diet.⁷

This present study had several limitations. First, the sample was selected from a city-level hospital, which may cause some limitations in the extrapolation of results; thus, when extrapolating the results of this study, the representativeness of the sample should be considered. Secondly, the patients in the study had RA with a relatively long disease duration, so the individual's COMP values may have been affected by multiple factors, which might have then influenced the optimal cut-off value.

In conclusion, this present study demonstrated that serum COMP levels have the potential to be used as a biological marker of cartilage metabolism in RA. To our knowledge, this is the first study to demonstrate the diagnostic ability of COMP for differentiating between patients with RA and healthy individuals. These findings also indicated that a cut-off value of 21.51 ng/ml for serum COMP could be useful for the discriminating between patients with RA and healthy individuals. The monitoring of COMP levels in serum

could also be a helpful method for assessing the presence and progression of RA.

Acknowledgements

We would like to thank the staff at Weifang People's Hospital as they provided valuable assistance with the data collection.

Declaration of conflicting interest

The authors declare that there are no conflicts of interest.

Funding

This work was supported by the Foundation for Outstanding Young Scientist in Shandong Province: 'Analysis on the molecular mechanism of EDM1 and PSACH in different clinical phenotypes caused by COMP gene mutations' (no. BS2011SW050).

References

1. Sokka T, Kautiainen H, Toloza S, et al. QUEST-RA: quantitative clinical assessment of patients with rheumatoid arthritis seen in standard rheumatology care in 15 countries. *Ann Rheum Dis* 2007; 66: 1491–1496.
2. Rindfleisch JA and Muller D. Diagnosis and management of rheumatoid arthritis. *Am Fam Physician* 2005; 72: 1037–1047.
3. Scott DL, Smith C and Kingsley G. Joint damage and disability in rheumatoid arthritis: an updated systematic review. *Clin Exp Rheumatol* 2003; 21(5 Suppl 31): S20–S27.
4. Emery P, Solem C, Majer I, et al. A European chart review study on early rheumatoid arthritis treatment patterns, clinical outcomes, and healthcare utilization. *Rheumatol Int* 2015; 35: 1837–1849.
5. Contreras-Yáñez I and Pascual-Ramos V. Window of opportunity to achieve major outcomes in early rheumatoid arthritis patients: how persistence with therapy matters. *Arthritis Res Ther* 2015; 17: 177.
6. Arnett FC, Edworthy SM, Bloch DA, et al. The American Rheumatism Association 1987

- revised criteria for the classification of rheumatoid arthritis. *Arthritis Rheum* 1988; 3: 315–324.
7. Tseng S, Reddi AH and Di Cesare PE. Cartilage oligomeric matrix protein (COMP): a biomarker of arthritis. *Biomark Insights* 2009; 4: 33–44.
 8. Mølbaek K, Hørslev-Petersen K and Primdahl J. Diagnostic delay in rheumatoid arthritis: a qualitative study of symptom interpretation before the first visit to the doctor. *Musculoskeletal Care* 2016; 14: 26–36.
 9. Lassere MN, Johnson KR, Boers M, et al. Definitions and validation criteria for biomarkers and surrogate endpoints: development and testing of a quantitative hierarchical levels of evidence schema. *J Rheumatol* 2007; 34: 607–615.
 10. Biomarkers Definitions Working Group. Biomarkers and surrogate endpoints: preferred definitions and conceptual framework. *Clin Pharmacol Ther* 2001; 69: 89–95.
 11. Zhu TH, Cai CY and Zhang L. Research progress of biomarker COMP in osteoarthritis. *Zhongguo Gu Shang* 2010; 23: 959–961. (in Chinese, English Abstract).
 12. Morozzi G, Fabbroni M, Bellisai F, et al. Cartilage oligomeric matrix protein level in rheumatic diseases: potential use as a marker for measuring articular cartilage damage and/or the therapeutic efficacy of treatments. *Ann N Y Acad Sci* 2007; 1108: 398–407.
 13. Di Cesare PE, Carlson CS, Stollerman ES, et al. Expression of cartilage oligomeric matrix protein by human synovium. *FEBS Lett* 1997; 412: 249–252.
 14. Wasserman AM. Diagnosis and management of rheumatoid arthritis. *Am Fam Physician* 2011; 11: 1245–1252.
 15. Saxne T and Heinegård D. Cartilage oligomeric matrix protein: a novel marker of cartilage turnover detectable in synovial fluid and blood. *Br J Rheumatol* 1992; 31: 583–591.
 16. Neidhart M, Hauser N, Paulsson M, et al. Small fragments of cartilage oligomeric matrix protein in synovial fluid and serum as markers for cartilage degradation. *Br J Rheumatol* 1997; 36: 1151–1160.
 17. Andersson ML, Svensson B, Petersson IF, et al. Early increase in serum-COMP is associated with joint damage progression over the first five years in patients with rheumatoid arthritis. *BMC Musculoskelet Disord* 2013; 14: 229.
 18. Das BR, Roy A and Khan FR. Cartilage oligomeric matrix protein in monitoring and prognostication of osteoarthritis and its utility in drug development. *Perspect Clin Res* 2015; 6: 4–9.
 19. de Jong Z, Munneke M, Vilim V, et al. Value of serum cartilage oligomeric matrix protein as a prognostic marker of large-joint damage in rheumatoid arthritis—data from the RAPIT study. *Rheumatol (Oxford)* 2008; 47: 868–871.
 20. Nikolaisen C, Rekvig OP and Nossent HC. Diagnostic impact of contemporary biomarker assays for rheumatoid arthritis. *Scand J Rheumatol* 2007; 36: 97–100.
 21. Bender AL, da Silveira IG, von Mühlen CA, et al. High specificity but low sensitivity of the cartilage oligomeric matrix protein (COMP) test in rheumatoid arthritis and osteoarthritis. *Clin Chem Lab Med* 2010; 48: 569–570.
 22. Wisłowska M and Jabłońska B. Serum cartilage oligomeric matrix protein (COMP) in rheumatoid arthritis and knee osteoarthritis. *Clin Rheumatol* 2005; 24: 278–284.
 23. Kroot EJ, de Jong BA, van Leeuwen MA, et al. The prognostic value of anti-cyclic citrullinated peptide antibody in patients with recent-onset rheumatoid arthritis. *Arthritis Rheum* 2000; 8: 1831–1835.
 24. Lindqvist E, Eberhardt K, Bendtzen K, et al. Prognostic laboratory markers of joint damage in rheumatoid arthritis. *Ann Rheum Dis* 2005; 64: 196–201.
 25. Aletaha D, Neogi T, Silman AJ, et al. 2010 Rheumatoid arthritis classification criteria: an American College of Rheumatology/ European League Against Rheumatism collaborative initiative. *Arthritis Rheum* 2010; 62: 2569–2581.
 26. Aletaha D and Smolen J. The Simplified Disease Activity Index (SDAI) and the Clinical Disease Activity Index (CDAI): a review of their usefulness and validity in

- rheumatoid arthritis. *Clin Exp Rheumatol* 2005; 23(5 Suppl 39): S100–S108.
27. Chinese Rheumatology Branch of Chinese Medical Association. Guide for diagnosis and treatment of rheumatoid arthritis. *Chin J Rheumatol* 2010; 4: 265–270. (in Chinese).
 28. Steinbrocker O, Traeger CH and Batterman RC. Therapeutic criteria in rheumatoid arthritis. *J Am Med Assoc* 1949; 140: 659–662.
 29. El Defrawy AO, Gheita TA, Raslan HM, et al. Serum and synovial cartilage oligomeric matrix protein levels in early and established rheumatoid arthritis. *Z Rheumatol* 2015; (Epub ahead of print).
 30. Wollheim FA. Predictors of joint damage in rheumatoid arthritis. *APMIS* 1996; 104: 81–93.
 31. Lee YH, Bae SC and Song GG. Diagnostic accuracy of anti-MCV and anti-CCP antibodies in rheumatoid arthritis: a meta-analysis. *Z Rheumatol* 2015; 74: 911–918.
 32. Shen R, Ren X, Jing R, et al. Rheumatoid factor, anti-cyclic citrullinated peptide antibody, C-reactive protein, and erythrocyte sedimentation rate for the clinical diagnosis of rheumatoid arthritis. *Lab Med* 2015; 46: 226–229.