



Cohort Study

Gender-based differences in primary percutaneous coronary intervention in patients with myocardial infarction from a developing country: A retrospective cohort study

Farah Yasmin^a, Sumeet Kumar^b, Manjeet Singh^c, Sagar^d, Karan Kumar^b, Om Parkash^e, Muhammad Sohaib Asghar^{a,*}, Fareeha Jawed^a, Tooba Ahmed Kirmani^a, Muhammad Tanveer Alam^a

^a Department of Internal Medicine, Dow University of Health Sciences, Karachi, Pakistan

^b Department of Internal Medicine, Ghulam Muhammad Mahar Medical College, Sukkur, Pakistan

^c Department of Internal Medicine, Liaquat National Hospital and Medical College, Karachi, Pakistan

^d Department of Internal Medicine, Jinnah Sindh Medical University, Karachi, Pakistan

^e Department of Internal Medicine, Chandka Medical College, Larkana, Pakistan



ARTICLE INFO

Keywords:
Gender disparity
Angiography
Outcomes
MACE
Adverse events

ABSTRACT

Introduction: Limited data exists about gender's impact on differences in risk factors and outcomes in our setting. Therefore, we sought to ascertain sex-related differences in patients with AMI in our setting.

Material and methods: This retrospective study analyzed data from 247 myocardial infarction patients hospitalized in a tertiary care hospital, between March and October 2020. After hospital admission, all patients underwent ECG, myocardial enzymes, troponin and other biochemical tests followed by primary PCI.

Results: Patients were divided in two groups male ($n = 153$, mean age 55.2 ± 11.0 years) and female ($n = 94$, mean age 58.4 ± 12.7 years). The prevalence of smoking was higher in males than females (22.8% vs. 3.1%, $p < 0.01$) and so was history of three-vessel disease (3VD; 18.9% vs. 7.4%, $p = 0.013$). History of myocardial infarction was lower in females than males (13.8% vs. 24.8%, $p = 0.03$) however the age did not vary significantly between the two groups ($p = 0.21$). Serum creatinine (sCr) levels ($1.0 \pm 0.77 \mu\text{mol/L}$ vs. $1.2 \pm 0.73 \mu\text{mol/L}$, $p = 0.28$) and body mass index (28.4 ± 5.3 vs 27.4 ± 4.8 , $p = 0.45$) were lower in females as compared to males, however not statistically significant. The incidence of major adverse events, severe arrhythmia and in-hospital outcomes showed no significant difference ($p > 0.05$) between the two groups. Post-op TIMI score and average length of hospital stay were not statistically different either (3.29 ± 2.9 vs. 2.6 ± 1.7 , $p = 0.726$).

Conclusion: Our study shows that females have a comparable age of onset of major cardiovascular events as that of males. Post-PCI clinical outcomes and in-hospital stay had no significant differences between the two groups.

1. Introduction

The influence of patient gender on outcomes of acute myocardial infarction (AMI) is controversial. Previous analyses on gender disparities have revealed higher mortality in females compared to males when hospitalized for STEMI [1]. This can be due to differences in presentation, age of AMI, risk factors and patient and system related delays [2]. Limited data exists about gender's impact on differences in risk factors and outcomes in our setting. Therefore, we attempted to analyze the

clinical course, characteristics and outcomes of patient on gender-based differences presented with myocardial infarction going under primary percutaneous coronary intervention.

2. Material and methods

This retrospective study analyzed data from 247 myocardial infarction patients hospitalized in a tertiary care hospital, between March and October 2020. The study has been reported in line with the STROCCS

* Corresponding author. Department of Internal Medicine, Dow University Hospital-Ojha Campus, Dow University of Health Sciences, B328, Block 6, Gulshan-e-Iqbal, Karachi, 75300, Pakistan.

E-mail address: sohaib_asghar123@yahoo.com (M.S. Asghar).

<https://doi.org/10.1016/j.amsu.2022.103532>

Received 9 February 2022; Received in revised form 21 March 2022; Accepted 26 March 2022

Available online 1 April 2022

2049-0801/© 2022 The Authors. Published by Elsevier Ltd on behalf of IJS Publishing Group Ltd. This is an open access article under the CC BY license (<http://creativecommons.org/licenses/by/4.0/>).

criteria 2021 [3]. The research was registered with registry of Dow University Hospital with UIN # IRB/DUH/2020/784. The diagnostic criteria for ACS were based on chest pain or discomfort, ECG, and measurements of myocardial injury biomarkers. After hospital admission, all patients underwent ECG, myocardial enzymes, troponin and other biochemical tests followed by primary PCI. Hospital discharge (or death without discharge) was primary end outcome. Data was gathered for Socio-demographic and clinical variables, Angiographic profile, and In-hospital outcomes from retrospective chart review of all the patients. Clinical variables included comorbidities, history of previous cardiac events, presenting symptoms, Killip class, and infarction localization on ECG. Angiographic profile included vessel involvement, post-operative TIMI score, severity of lesion on angiography, and number of stents placed. In-hospital outcomes reported length of hospital stay, exacerbation of CHF during hospitalisation, any bleeding complication, arrhythmia, new onset MI, stroke, cardiogenic shock, and mortality. Data was analyzed using SPSS version 25.0, and descriptive statistics were used to report frequencies while Chi-square/Independent T-tests were utilized to determine the differences in variables between males and females.

3. Results

Patients were divided in two groups male ($n = 153$, mean age 55.2 ± 11.0 years) and female ($n = 94$, mean age 58.4 ± 12.7 years). Mean BMI was $27.78 \pm 5.01 \text{ kg/m}^2$. Prior history of MI was present in 20.64% of the participants while Prior history of CABG in 4.04%. Frequently reported comorbidities were hypertension (70.04%), diabetes (46.96%), renal insufficiency (11.33%), atrial fibrillation (5.26%), and stroke (4.04%).

The prevalence of smoking was higher in males than females (22.8% vs. 3.1%, $p < 0.01$) and so was history of three-vessel disease (3VD; 18.9% vs. 7.4%, $p = 0.013$). History of myocardial infarction was lower in females than males (13.8% vs. 24.8%, $p = 0.03$), however the age did not vary significantly between the two groups ($p = 0.21$). Serum creatinine (sCr) levels ($1.0 \pm 0.77 \mu\text{mol/L}$ vs. $1.2 \pm 0.73 \mu\text{mol/L}$, $p = 0.28$) and body mass index (28.4 ± 5.3 vs. 27.4 ± 4.8 , $p = 0.45$) were lower in females as compared to males, however not statistically significant as shown in Table 1.

History of hypertension was significant in females ($p = 0.04$), while rest comorbidities showed no difference. Right coronary artery was significantly more likely to be infarct-related artery among males ($p = 0.021$). Post-op TIMI score ($p = 0.247$) and average length of hospital stay were not statistically different either (3.29 ± 2.9 vs. 2.6 ± 1.7 , $p = 0.726$) as shown in Table 2. The incidence of major adverse events, severe arrhythmia and in-hospital outcomes showed no significant difference ($p > 0.05$) between the two groups as shown in Table 3.

Stent diameter (mm) had a negative correlation with age i.e., with increasing age stent diameter tends to be decreased in both gender ($p = 0.001$) as shown in Fig. 1. Furthermore, females showed a stronger correlation than males. On Kaplan-Meier analysis, major in-hospital events occurred early in females than males during hospital stay post-PCI (log rank $p = 0.032$, chi-square 4.604) with hazard ratio of 2.105 [95% confidence interval: 1.032–4.294] $p = 0.041$ as shown in Fig. 2.

4. Discussion

One finding of the study was a difference between comorbidities at baseline but no significant difference in clinical outcome between two groups. However previous studies showed that women had poor outcome than men, once PCI is done [4,5]. The studies conducted in China, Sweden and Belgium showed that women presented at an older age than men with AMI [6–8]. This is likely due to protective effects of oestrogen that helps women to combat coronary atherosclerosis until menopause and could potentially be offset by the undiagnosed/untreated medical conditions that are directly linked to coronary artery

Table 1
Sociodemographic and clinical data of the study population.

Socio-demographic and clinical variables	Males (n = 153)	Females (n = 94)	P-value
Age (years)	55.2 ± 11.0	58.4 ± 12.7	0.21
BMI	27.4 ± 4.8	28.4 ± 5.3	0.45
Smoker	35 (22.8%)	3 (3.1%)	<0.01
Non-smoker	118 (77.1%)	91 (96.8%)	<0.01
Peripheral artery disease (%)	3 (1.96%)	2 (2.1%)	0.93
Dyslipidemia (%)	38 (24.8%)	19 (20.2%)	0.402
Hypertension (%)	100 (65.3%)	73 (77.6%)	0.040
Diabetes mellitus (%)	71 (46.4%)	45 (47.8%)	0.823
Atrial fibrillation (%)	7 (4.5%)	6 (6.4%)	0.537
History of Stroke (%)	7 (4.5%)	3 (3.2%)	0.592
Renal insufficiency (%)	18 (11.7%)	10 (10.6%)	0.786
On hemodialysis (%)	6 (3.9%)	3 (3.2%)	0.766
History of cardiac arrest (%)	4 (2.6%)	0 (0%)	0.114
Prior MI (%)	38 (24.8%)	13 (13.8%)	0.038
Prior PCI (%)	32 (20.9%)	19 (20.2%)	0.895
Prior CABG (%)	9 (5.8%)	1 (1%)	0.062
Presenting symptoms	78(50.9%)	44 (46.8%)	0.524
Typical angina chest pain (%)	19 (12.4%)	14 (14.8%)	0.579
Atypical angina chest pain (%)	52 (33.9%)	32 (34%)	0.993
No chest pain (%)			
Killip class (preoperative, %)	66 (43.1%)	38 (40.4%)	0.726
1	74 (48.3%)	46 (48.9%)	0.931
2	8 (5.2%)	5 (5.3%)	0.975
3	5 (3.2%)	5 (5.3%)	0.427
4			
MI localization in ECG (%)	10 (6.5%)	7 (7.4%)	0.784
Anterior wall	10 (6.5%)	3 (3.2%)	0.253
Inferior wall	3 (1.9%)	1 (1%)	0.588
Anterolateral wall	1 (0.6%)	4 (4.2%)	0.051
Others			
Troponin I on admission (pg/ml)	1743 ± 6417	1474 ± 5719	0.309
sCR on admission (umol/L)	1.2 ± 0.73	1.0 ± 0.77	0.288
LV ejection fraction ≤ 40%:	25 (16.3%)	17 (18%)	0.935

Table 2
Angiographic profile of the study population.

Angiographic profile	Males (n = 153)	Females (n = 94)	P-value
Infarct-related coronary artery (%)	6 (3.9%)	1 (1%)	0.189
Left main coronary artery	45 (29.4%)	23 (24%)	0.398
Left anterior descending	16.9%	12 (12.7%)	0.371
Circumflex artery	36 (23.5%)	11 (11.7%)	0.021
Right coronary artery			
Emergency call (%)	5 (3.2%)	5 (5.3%)	0.427
Severity of CAD (%)	30 (19.6%)	16 (17%)	0.612
One-vessel:	13 (8.5%)	8 (8.5%)	0.997
Two-vessel:	29 (18.9%)	7 (7.4%)	0.013
Three-vessel:			
Post-operative TIMI (%)	104 (67.9%)	54 (57.4%)	0.247
3	33 (21.5%)	27 (28.7%)	
2	16 (10.4%)	13 (13.8%)	
0–1			
Medical therapy (%)	126 (82.3%)	69 (73.4%)	0.094
Aspirin	75 (49%)	47 (50%)	0.881
Clopidogrel/Tegreino	100 (65.3%)	70 (74.4%)	0.133
β-blocks	76 (49.6%)	36 (38.2%)	0.081
ACEI/ARB	120 (78.4%)	74 (78.7%)	0.957
Statins			
Successful PCI (%)	138 (90%)	81 (86%)	0.333
Stent number (Number of implanted stents)	2.6 ± 0.968	2.7 ± 1.1	0.687
Average length of hospital stays (days)	3.29 ± 2.9	2.6 ± 1.7	0.726

disease.

When it comes to comorbidities, we found out around 77.6% of women were hypertensive as opposed to 65.3% of men at time of presentation at hospital with ACS. One study conducted in America also showed that women are increasingly hypertensive than men with ACS

Table 3
In-hospital outcomes observed during hospital stay.

In-hospital outcomes	Males (n = 153)	Females (n = 94)	P-value
CHF need treatment	14 (9%)	10 (10.6%)	0.701
Bleeding complication	4 (2.6%)	1 (1%)	0.401
Severe arrhythmia	2 (1.3%)	2 (2%)	0.620
Myocardial infarction	4 (2.6%)	3 (3.2%)	0.791
Stroke	0 (0%)	1 (1%)	0.201
Cardiogenic shock	5 (3.2%)	1 (1%)	0.275
In-hospital death	4 (2.6%)	4 (4.2%)	0.479

[9]. This may be due to the limited access to healthcare for the women. It might be difficult to predispose it to certain socio-demographic factors since similar factors would have an impact of the rates of diabetes mellitus as well. But, in case of diabetes, 47.8% of women vs 46.4% of men were diabetic. Another study showed that women at time of presentation are presumably diabetic in greater number than men [10]. Men (22.8%) were smoker in greater number than women (3.1%) according to our research. In literature many studies show the evidence that history of smoking is not common in women [11,12].

At the time of coronary angiography, three vessel disease was significantly higher in males than females. Many studies in past showed that females are less likely to have multi-vessel disease or severe CAD than their male counterpart [8,13]. Moreover, our study showed that

only 1% of women had left main artery disease as opposed to 3.9% of men with similar findings. While group of researchers in Malaysia observed that left main artery was affected more in women than men [14].

In our study there were 9% men who needed in-hospital treatment for CHF in contrast with 10.6% women (p-value 0.701). However, there are many studies done in past, that tell women are more likely to have heart failure than men during hospitalisation [6,12,15,16]. On addressing bleeding complications, our data revealed that 2.6% men in comparison with only 1% of women faced these complications. While one study published in American Journal of Cardiology suggests that women are more likely to have bleeding than men, unexplained by all factors taken into consideration like differences in comorbidities, angiographic profile and medical therapy [4]. In literature previously it had been found out that women have higher heart rate in resting state than men, possibly due to variation in intrinsic properties of sinus node, autonomic nervous system involvement and exercise tolerance [10,17]. In our study, only small number of both men and women had severe arrhythmia during hospitalisation and no remarkable gender-based difference was observed. One study done in Finland showed that females have less chances of subsequent MI than men [18]. Moreover, our study showed that 2.6% men vs 3.2% women had subsequent new-onset MI. A study done in England also concluded that both genders do not have remarkable difference in rate of stroke [12]. There are number of

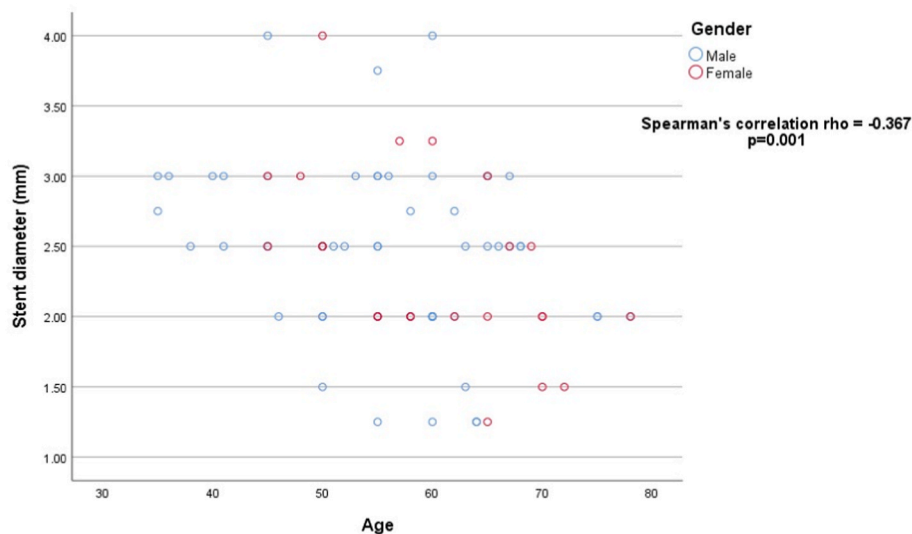


Fig. 1. Scatter plot showing correlation of stent diameter (mm) with age of the study participant.

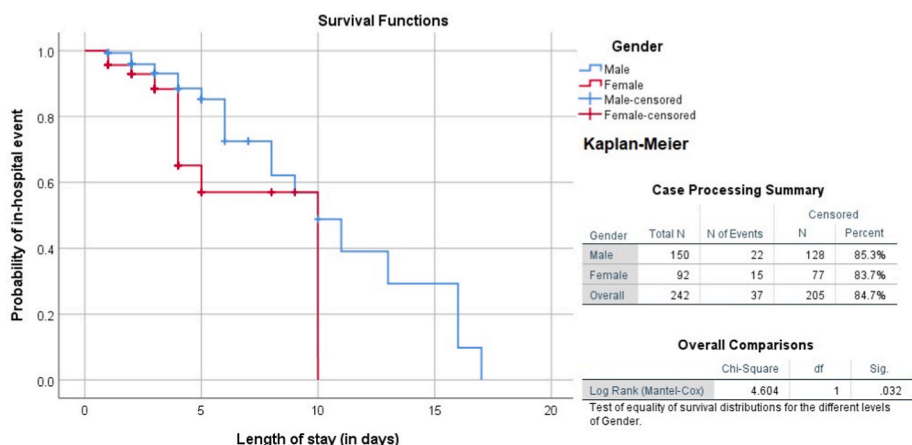


Fig. 2. Kaplan-Meier survival curve showing relation of in-hospital outcomes with gender.

researches in literature that suggest women have higher in hospital mortality when compared with men. But we found out that there is no significant difference between two genders when it comes to in-hospital death [11,14,19].

Therefore, we conclude that women have comparable age of onset of cardiovascular events, both genders differ in comorbidities at time of presentation with AMI. But there are no significant differences witnessed in case of in-hospital outcome. Certain limitations affect the generalizability of current findings as there are various factors like access to healthcare and traditional societal values may have an impact on the perceived differences and the disease prevalence could potentially be more comparable. There could also be an element of detection bias as men with pre-existing diagnosed CAD are more likely to receive treatment than in women who have undiagnosed disease.

Ethical approval

Ethical approval was taken in this study from institutional review board of Dow University Hospital (Ref:App.# IRB/DUH/2020/784).

Source of funding

The authors declare that they have no commercial associations (e.g. consultancies, stock ownership, equity interest, patent/licensing arrangement etc.) or funding with this article.

Author contribution

M.T.A, M.S.A, and F.Y conceived the idea, S.K, M.S, K.K, and O.P retrieved the data, did write up of letter, and finally T.A.K, F.J, and S, reviewed and provided inputs. All authors approved the final version of the manuscript.

Trial registry number

1. Name of the registry: Dow University Hospital.
2. Unique Identifying number or registration ID: IRB/DUH/2020/784
3. Hyperlink to your specific registration (must be publicly accessible and will be checked):

Guarantor

Muhammad Sohaib Asghar.

Patient consent

Consent to participate from the patients was waived and not required due to retrospective nature of the data collection.

Provenance and peer review

Not commissioned, externally peer reviewed.

Declaration of competing interest

The authors have no conflict of interest.

Data availability statement

Data can be made available on request from corresponding author.

Acknowledgments

None.

Appendix A. Supplementary data

Supplementary data to this article can be found online at <https://doi.org/10.1016/j.amsu.2022.103532>.

References

- [1] Y. Chen, L. Jiang, M. Smith, H. Pan, R. Collins, R. Peto, Z. Chen, Sex differences in hospital mortality following acute myocardial infarction in China: findings from a study of 45 852 patients in the COMMIT/CCS-2 study, *Heart Asia* 3 (2011) 104–110.
- [2] M.R. Meyer, A. M Bernheim, D.J. Kurz, C.J. O'Sullivan, D. Tüller, R. Zbinden, T. Rosemann, F.R. Eberli, Gender differences in patient and system delay for primary percutaneous coronary intervention: current trends in a Swiss ST-segment elevation myocardial infarction population, *Eur. Heart J.: Acute Cardiovascular Care* 8 (2019) 283–290.
- [3] G. Mathew, R. Agha, For the STROCCS Group. STROCCS 2021: strengthening the Reporting of cohort, cross-sectional and case-control studies in Surgery, *Int. J. Surg.* 96 (2021) 106165, <https://doi.org/10.1016/j.ijsu.2021.106165>.
- [4] E. Argulian, A.D. Patel, J.L. Abramson, Gender differences in short term cardiovascular outcomes after percutaneous coronary interventions, *Am. J. Cardiol.* 98 (2006) 48–53, <https://doi.org/10.1016/j.amjcard.2006.01.048>.
- [5] J.L. Abramson, E. Veledar, W.S. Weintraub, Association between gender and in-hospital mortality after percutaneous coronary intervention according to age, *Am. J. Cardiol.* 91 (2003) 968–971, [https://doi.org/10.1016/s0002-9149\(03\)00114-0](https://doi.org/10.1016/s0002-9149(03)00114-0).
- [6] X.T. Song, Y.D. Chen, W.Q. Pan, Gender based differences in patients with acute coronary syndrome: findings from Chinese Registry of acute coronary events (CRACE), *Chin. Med. J.* 120 (2007) 1063–1067.
- [7] J.E. Guelker, L. Bansemir, R. Ott, Gender-based acute outcome in percutaneous coronary intervention of chronic total coronary occlusion, *Neth. Heart J.* 25 (2017) 304–311, <https://doi.org/10.1007/s12471-017-0966-3>.
- [8] M. Lempereur, J. Magne, K. Cornelis, Impact of gender difference in hospital outcomes following percutaneous coronary intervention. Results of the Belgian working group on interventional cardiology (BWGIC) registry, *EuroIntervention* 10 (2014) 1–8, https://doi.org/10.4244/EIJY14M12_11.
- [9] C.G. Frazier, S.H. Shah, P.W. Armstrong, Prevalence and management of hypertension in acute coronary syndrome patients varies by sex: observations from the sibrifiban versus aspirin to yield maximum protection from ischemic heart events postacute cOronary sYndromes (SYMPHONY) randomized clinical trials, *Am. Heart J.* 150 (2005) 1260–1267, <https://doi.org/10.1016/j.ahj.2005.08.004>.
- [10] C. Leuzzi, G.M. Sangiorgi, M.G. Modena, Gender-specific aspects in the clinical presentation of cardiovascular disease, *Fundam. Clin. Pharmacol.* 24 (2010) 711–717, <https://doi.org/10.1111/j.1472-8206.2010.00873.x>.
- [11] H.T. Yu, K.J. Kim, W.D. Bang, Gender based differences in the management and prognosis of acute coronary syndrome in Korea, *Yonsei Med. J.* 52 (2011) 562–568, <https://doi.org/10.3349/ymj.2011.52.4.562>.
- [12] J.S. Hochman, J.E. Tamis, T.D. Thompson, Sex, clinical presentation, and outcome in patients with acute coronary syndromes, *N. Engl. J. Med.* 341 (1999) 226–232.
- [13] J.S. Hochman, C.H. McCabe, P.H. Stone, Outcome and profile of women and men presenting with acute coronary syndrome: a report from TIMI III B, *N. Engl. J. Med.* 30 (1997) 141–148, [https://doi.org/10.1016/s0735-1097\(97\)00107-1](https://doi.org/10.1016/s0735-1097(97)00107-1).
- [14] C.Y. Lee, N.N. Hairi, W.A.W. Ahmad, O. Ismail, Are there gender differences in coronary artery disease? The Malaysian National cardiovascular disease database-percutaneous coronary intervention (NCVID-PCI) registry, *PLoS One* 8 (2013), e78382, <https://doi.org/10.1371/journal.pone.0072382>.
- [15] C. Maynard, P.E. Litwin, J.S. Martin, W.D. Weaver, Gender differences in the treatment and outcome of acute myocardial infarction. Results from the myocardial infarction triage and intervention registry, *Arch. Intern. Med.* 152 (1992) 972–976.
- [16] K. Robinson, R.M. Conroy, R. Mulcahy, N. Hickey, Risk factors and in-hospital course of first episode of myocardial infarction or acute coronary insufficiency in women, *J. Am. Coll. Cardiol.* 11 (1988) 932–936, [https://doi.org/10.1016/s0735-1097\(98\)90048-1](https://doi.org/10.1016/s0735-1097(98)90048-1).
- [17] K. Liu, C. Ballew, D.R. Jacobs Jr., S. Sidney, Ethnic differences in blood pressure, pulse rate, and related characteristics in young adults. The CARDIA study, *Hypertension* 14 (1989) 218–226, <https://doi.org/10.1161/01.hyp.14.2.218>.
- [18] V. Kytö, T. Prami, H. Khanfir, P. Hasvold, E. Reissell, J. Airaksinen, Usage of PCI and long-term cardiovascular risk in post myocardial infarction patients: a nationwide registry cohort study from Finland, *BMC Cardiovasc. Disord.* 19 (2019) 123, <https://doi.org/10.1186/2Fs12872-019-1101-8>.
- [19] N.H. Fiebach, C.M. Viscoli, R.I. Horwitz, Differences between women and men in survival after myocardial infarction, *JAMA* 263 (1990) 1092–1096, <https://doi.org/10.1001/jama.1990.03440080070026>.