

RESEARCH

Open Access

Curcumin ameliorates macrophage infiltration by inhibiting NF- κ B activation and proinflammatory cytokines in streptozotocin induced-diabetic nephropathy

Vivian Soetikno^{1,2}, Flori R Sari¹, Punniyakoti T Veeraveedu¹, Rajarajan A Thandavarayan¹, Meilei Harima¹, Vijayakumar Sukumaran¹, Arun Prasath Lakshmanan¹, Kenji Suzuki³, Hiroshi Kawachi⁴ and Kenichi Watanabe^{1*}

Abstract

Background: Chronic inflammation plays an important role in the progression of diabetic nephropathy (DN) and that the infiltration of macrophages in glomerulus has been implicated in the development of glomerular injury. We hypothesized that the plant polyphenolic compound curcumin, which is known to exert potent anti-inflammatory effect, would ameliorate macrophage infiltration in streptozotocin (STZ)-induced diabetic rats.

Methods: Diabetes was induced with STZ (55 mg/kg) by intraperitoneal injection in rats. Three weeks after STZ injection, rats were divided into three groups, namely, control, diabetic, and diabetic treated with curcumin at 100 mg/kg/day, p.o., for 8 weeks. The rats were sacrificed 11 weeks after induction of diabetes. The excised kidney was used to assess macrophage infiltration and expression of various inflammatory markers.

Results: At 11 weeks after STZ injection, diabetic rats exhibited renal dysfunction, as evidenced by reduced creatinine clearance, increased blood glucose, blood urea nitrogen and proteinuria, along with marked reduction in the body weight. All of these abnormalities were significantly reversed by curcumin. Hyperglycemia induced the degradation of I κ B α and NF- κ B activation and as a result increased infiltration of macrophages (52%) as well as increased proinflammatory cytokines: TNF- α and IL-1 β . Curcumin treatment significantly reduced macrophage infiltration in the kidneys of diabetic rats, suppressed the expression of above proinflammatory cytokines and degradation of I κ B α . In addition, curcumin treatment also markedly decreased ICAM-1, MCP-1 and TGF- β ₁ protein expression. Moreover, at nuclear level curcumin inhibited the NF- κ B activity.

Conclusion: Our results suggested that curcumin treatment protect against the development of DN in rats by reducing macrophage infiltration through the inhibition of NF- κ B activation in STZ-induced diabetic rats.

Background

Diabetic nephropathy (DN) is the largest single cause of end-stage renal failure worldwide. In spite of the available modern therapies of glycaemic and blood pressure control, many patients continue to show progressive renal damage [1]. Therefore, it is extremely important to identify novel interventions to halt the progression of DN.

Recently, DN has been considered as an inflammatory disease [2], in which macrophage infiltration into glomeruli is associated with the progression of glomerular injury [3]. Monocytes/macrophages are the principle inflammatory cells found in the diabetic kidney [3-5], these cells extravasculated from the blood-stream and attracted to the target tissue through a process mediated by various chemokines secreted from resident glomerular cells such as monocyte chemotactic protein (MCP)-1 and adhesion molecules such as intercellular adhesion molecule (ICAM)-1 [6-8]. MCP-1 is a potent chemokine that is known to influence both macrophage accumulation and

* Correspondence: watanabe@nupals.ac.jp

¹Department of Clinical Pharmacology, Faculty of Pharmaceutical Sciences, Niigata University of Pharmacy and Applied Life Sciences, Niigata City, Japan
Full list of author information is available at the end of the article

macrophage function and its expression increases gradually in diabetic kidneys in animal models [9,10]. Renal expression of ICAM-1, a 90-kD cell surface glycoprotein that plays a major role in the regulation of interactions with immune cells whose expression is upregulated at the sites of inflammation, is known to be increased in experimental type 1 diabetic animals. Furthermore, macrophage infiltration was found to be blocked by anti-ICAM-1 antibody, confirming that ICAM-1 mediates macrophage infiltration into diabetic kidney [11]. These findings suggest that ICAM-1 and MCP-1 may play an important role in the pathogenesis of DN via the induction of inflammatory cell infiltration.

Transcription factors such as nuclear factor- κ B (NF- κ B) regulate the gene expression of several cytokines, chemotactic and matrix proteins involved in inflammation, immunological responses, and cell proliferation [12]. Studies have demonstrated that high glucose-induced NF- κ B activation in mesangial cells may play a role in diabetic renal injury through upregulation of ICAM-1 protein and mRNA expression in rat mesangial cells [13,14]. In addition, activated NF- κ B shows an important role in the upregulation of MCP-1 in human DN [15]. NF- κ B is also known to activate its downstream inflammatory mediators such as transforming growth factor (TGF)- β ₁, inducible nitric oxide synthase (iNOS), fibronectin, tumor necrosis factor (TNF)- α and interleukin (IL)-1 β [14,16].

Curcumin is the active ingredient in the traditional herbal remedy and dietary spice turmeric (*Curcuma longa*) and is the subject of clinical trials for various diseases such as cancer, Alzheimer's disease, and ulcerative colitis [17]. The polyphenol curcumin (diferuloylmethane) comprises 2-8% of most turmeric preparations and is generally regarded as its most active component, having potent antioxidant, anti-inflammatory and anticarcinogenic properties. Modern science has revealed that curcumin mediates its effects by modulation of several important molecular targets, including transcription factors (e.g., NF- κ B, activator protein (AP)-1, Early growth response gene (Egr)-1, β -catenin and Peroxisome proliferator-activated receptor (PPAR)- γ), enzymes (e.g., cyclooxygenase 2 (COX2), 5-lipoxygenase (LOX), iNOS and hemeoxygenase-1 (HO)-1), cell cycle proteins (e.g., cyclin D1 and p21), cytokines (e.g., TNF- α , IL-1, IL-6 and chemokines), receptors (e.g., Epidermal Growth Factor Receptor (EGFR) and Human Epidermal growth factor Receptor2 (HER2)) and cell surface adhesion molecules. Because it can modulate the expression of these targets, curcumin is now being used to treat cancer, arthritis, diabetes, Crohn's disease, cardiovascular diseases, osteoporosis, Alzheimer's disease, psoriasis and other pathologies [18].

Several in vitro and in vivo studies have demonstrated that curcumin inhibits activation of NF- κ B proinflammatory signaling pathways and reduces the influx of

macrophages [19-21]. However, to the best of our knowledge, studies have not been revealed the effect of curcumin on macrophages accumulation in DN. In the present study, we investigated the effect of curcumin on macrophages accumulation and the expression of ICAM-1, MCP-1 and TGF- β ₁ in experimental diabetic kidney. In addition, the relationship between the extent of transcription factor NF- κ B and proinflammatory cytokines, TNF- α and IL-1 β , expression in renal tissue was elucidated.

Methods

Animals and experimental protocol

All animal studies were treated in accordance with the guidelines for animal experimentation of our institute [22]. Male Sprague-Dawley rats (Charles River Japan Inc., Kanagawa, Japan), weighing approximately 250-300 g (8 weeks of age), were randomly divided into three groups ($n = 5$): non-diabetic normal animals used as a controls (C), diabetic animals treated with vehicle 1% gum Arabic (D), and diabetic animals treated with curcumin 100 mg/kg body weight [23] diluted in vehicle 1% gum Arabic (Cur). Diabetes was induced by a single intraperitoneal injection of streptozotocin (STZ 55 mg/kg body weight in 20 mM citrate buffer, pH 4.5), while the control animals received 20 mM citrate buffer solution. The use of STZ to induce diabetes provides an animal model of type 1 diabetes, as the drug causes pancreatic β -islet cell apoptosis. Diabetes was confirmed by tail-vein blood glucose levels using Medi-safe chips (Terumo Inc., Tokyo, Japan), and diabetes was defined if blood glucose ≥ 300 mg/dL. Curcumin was started at three weeks after STZ injection and was administered via oral gavage for 8 weeks. Rats were housed in a temperature-controlled room and were given free access to water and standard laboratory chow during the study period. All rats were sacrificed at 11 weeks after the induction of diabetes for analysis of renal tissue.

Biochemical analysis

Each week, rats were weighed and their blood glucose levels were measured. Urine samples were collected over a 24 h period in individual metabolic cages for the measurement of protein in urine at 1, 3, 7, and 11 weeks and were determined by the Bradford method. Urine creatinine was determined by the Jaffe method at 11 week. At the end of experimentation, heparinized whole blood was collected from anesthetized rats *via* heart puncture. EDTA-blood was centrifuged at 3000 g, 15 min at 4°C for the separation of plasma. The plasma was used for the estimation of blood urea nitrogen (BUN) and creatinine. Creatinine clearance was calculated in individual rats as follows: Creatinine clearance = urine creatinine \times urine volume/plasma creatinine \times time [24].

Chemicals

Unless otherwise stated all reagents were of analytical grade and were purchased from Sigma-Aldrich (Tokyo, Japan).

Histopathological analysis

The kidney was decapsulated. Half of the kidney was immediately snap-frozen in liquid nitrogen for subsequent protein extraction and enzymatic assays. The remaining excised kidneys were cut into about 2-mm thick transverse slices and fixed in 10% formalin. After being embedded in paraffin, several transverse sections were obtained from the kidney and stained with Periodic acid-Schiff (PAS) for histological evaluation. The frequency and severity of lesions in kidney were assessed semi-quantitatively by light microscopy. Forty glomeruli in each kidney were graded in accordance with their severity of glomerular damage (0, no lesion; 1, sclerosis of < 25% of the glomerulus; 2, sclerosis of 26-50%; 3, sclerosis of 51-75%; and 4, sclerosis of > 75% of the glomerulus). The glomerulosclerosis indexes were calculated using the following formula, (glomerulosclerosis index = $(1 \times n_1) + (2 \times n_2) + (3 \times n_3) + (4 \times n_4) / n_0 + n_1 + n_2 + n_3 + n_4$, where n_x is number of glomeruli in each grade of glomerulosclerosis) as reported previously [25].

Immunohistochemistry

Formalin-fixed, paraffin-embedded kidney tissue sections were used for immunohistochemical staining. After deparaffinization and hydration, the slides were washed in Tris-buffered saline (TBS; 10 mM/L Tris HCl, 0.85% NaCl, pH 7.2). Endogenous peroxidase activity was quenched by incubating with the slides in methanol and 0.3% H₂O₂ in methanol. After overnight incubation with the primary antibody, that is, mouse monoclonal anti-ED1 antibody (diluted 1:50) (sc-59103; Santa Cruz Biotechnology Inc. CA, USA) at 4°C, the slides were washed in TBS and horseradish peroxidase (HRP)-conjugated goat antimouse secondary antibody was then added and the slides were further incubated at room temperature for 1 h. The slides were washed in TBS and incubated with diaminobenzidine tetrahydrochloride as the substrate, and counterstained with hematoxylin. A negative control without primary antibody was included in the experiment to verify the antibody specificity. Intraglomerular ED-1-positive cells were counted in 200 glomeruli/group under 400-fold magnification and expressed as cells/glomerular cross section (gcs) [26].

Immunofluorescence staining for ICAM-1

For immunofluorescence, tissues were fixed in 10% buffered formaldehyde solution and embedded in paraffin. Sections underwent microwave antigen retrieval, were blocked with 10% rabbit serum in 1% BSA and were then incubated with polyclonal goat anti-ICAM-1 antibody

(sc-1511; Santa Cruz). Binding sites of the primary antibody were revealed with fluorescein isothiocyanate-conjugated secondary antibody. Samples were visualized with a fluorescence microscope at 400-fold magnification (CIA-102; Olympus) [27].

Cytosolic and nuclear extract homogenization

The kidney was cut and immediately frozen in liquid nitrogen and kept at -80°C until use. The frozen kidney was ground to a powder and then mixed in ice-cold HEPES buffer (10 mM HEPES, 0.2% Triton X-100, 50 mM NaCl, 0.5 mM sucrose, 0.1 mM EDTA, protease, and phosphatase inhibitors) and homogenized with an ice-chilled Dounce homogenizer at 4°C. This was spun at 10,000 rpm for 10 min, and the supernatant was aliquoted and stored at -80°C as the cytosolic extract. The pellet was suspended in ice-cold buffer (10 mM HEPES, 500 mM NaCl, 10% glycerol, 0.1 mM EDTA, 0.1 mM EGTA, 0.1% IGEPAL, and protease and phosphatase inhibitors) and vortexed at 4°C for 15 min and centrifuged for 10 min at 14,000 rpm. The resulting supernatant was aliquoted and stored as the nuclear extract at -80°C. The absence of cross-reactivity with β -actin in Western blots confirmed the purity of nuclear extracts. A small aliquot of cytosolic and nuclear extract was kept at 4°C for protein estimation [28].

Western blotting

Cytosol (70 μ g total protein) and nuclear extracts (50 μ g total protein) were separated on a 7.5-15% polyacrylamide gel and electrophoretically transferred to nitrocellulose membrane. Membranes were blocked with 5% non-fat dry milk in Tris-buffered saline Tween (20 mM Tris, pH 7.6, 137 mM NaCl, and 0.1% Tween 20) for 3 h at room temperature, followed by an overnight incubation at 4°C with polyclonal antibodies to rat ICAM-1, I κ B α (sc-371; Santa Cruz), TNF- α (sc-1350; Santa Cruz), IL-1 β (sc-7884; Santa Cruz), NF- κ B p65 (Cell Signaling #4764), p-NF- κ B (Ser276) (sc-101749; Santa Cruz), TGF- β ₁ (Promega G-1221), MCP-1 (sc-1785; Santa Cruz) or β -actin (Cell Signaling). All antibodies were used at a dilution of 1:1000. Three times after washing with Tris-buffered saline Tween 20 (TBS-T), incubation with appropriate HRP-conjugated secondary antibodies were performed for 1 h at room temperature. After three additional TBST washes, the immunoreactive bands were visualized by enhanced chemiluminescence (Amersham Biosciences, Buckinghamshire, UK) according to the manufacturer's instructions. The levels of β -actin and lamin A (sc-20680; Santa Cruz) were estimated in cytosol samples and in nuclear extract samples, respectively, to check for equal loading of samples. Films were scanned and band densities were quantified with densitometric analysis using Scion Image program (Epson GT-X700, Tokyo, Japan).

RNA extraction

Kidney tissues were preserved by immersion in RNAlater (Ambion Inc., Austin, TX) immediately after sampling. Total RNA was extracted after homogenization using Ultra TurraxT8 (IKA Labortechnik, Staufen, Germany) in TRIzol reagent (Invitrogen Corp., Carlsbad, CA) according to the standard protocol. cDNA was synthesized by reverse transcription using total RNA (2 µg) as a template (Super Script II; Invitrogen Corp).

Gene expression analysis by real-time RT-PCR

Gene expression analysis was performed by real-time reverse transcription polymerase chain reaction (RT-PCR) (Smart cycler; Cepheid, Sunnyvale, CA) using cDNA synthesized from the diabetic specimen. Primer sequences were as follows: IL-1β (forward), CTTCATC TCACAGCAGCACATCTCG, (reverse), TCCACGGG-CAAGACATAGGTAGC; TNF-α (forward), CCCC AAA GGGATGAGAAGTT, (reverse), CACTTGGTGGTT TGCTACGA; GAPDH (forward), GCTCATTTCCTGG-TATGACAACG, (reverse), AGGGGTCTACATGG-CAACTG. Real-time RT-PCR, monitoring with a TaqMan probe (TaqMan Gene expression assays; Applied Biosystems, Foster City, CA) was performed according to the following protocol: 600 seconds at 95°C, followed by thermal cycles of 15 seconds at 95°C, and 60 seconds at 60°C for extension. Relative standard curves representing several 10-fold dilutions (1:10: 100: 1000: 10,000: 100, 000) of cDNA from kidney tissue samples were used for linear regression analysis of other samples. Results were normalized to GAPDH mRNA as an internal control and are thus shown as relative mRNA levels.

Statistical analysis

All values are expressed as means ± SEM and were analyzed using one-way analysis of variance (ANOVA) followed by Tukey's methods for post hoc analysis and two-tailed *t*-test when appropriate. A value of *p* < 0.05 was considered statistically significant. For statistical analysis, GraphPad Prism 5 software (San Diego, CA, USA) was used.

Results

Animal data

At the end of the 11th week, body weight and the ratio of kidney weight to body weight, a marker for the development of DN was significantly decreased and increased, respectively in diabetic rats, and this ratio was significantly decreased in diabetic rat-treated with curcumin. Diabetic rats also exhibited increased plasma creatinine, increased BUN, and decreased creatinine clearance (CCr). All of these abnormalities were significantly decreased by curcumin treatment (Table 1). Treatment with curcumin also prevented body weight loss in

Table 1 Biochemical parameters in experimental animals at 11 weeks

	C (n = 5)	D (n = 5)	Cur (n = 5)
Body weight (BW) (g)	539.5 ± 19.24	325.8 ± 15.88*	341.5 ± 15.11
Kidney weight (KW) (g)	1.5 ± 0.04	1.94 ± 0.11*	1.65 ± 0.11
KW/BW ratio × 1000	2.78 ± 0.05	5.94 ± 0.12*	4.83 ± 0.19 [#]
Plasma creatinine (mg/dL)	0.55 ± 0.02	1.06 ± 0.13*	0.69 ± 0.03 [#]
CCr (mL/min)	3.8 ± 0.9	0.81 ± 0.08*	3.61 ± 0.48 [#]
BUN (mg/dL)	22.63 ± 0.95	38.05 ± 1.8*	30.58 ± 2.2 [#]

BUN: blood urea nitrogen, CCr: creatinine clearance, KW/BW: ratio of kidney weight to body weight.

Results are presented as the mean ± SEM.

• **p* < 0.05 vs. C.

• #*p* < 0.05 vs. D.

diabetic rats, but this effect was not significant compared with that of untreated diabetic rats. During the study period, plasma glucose (Figure 1A) and 24 h urinary protein excretion (Figure 1B) increased progressively in diabetic rats which was significantly abrogated by the administration of curcumin (*p* < 0.05).

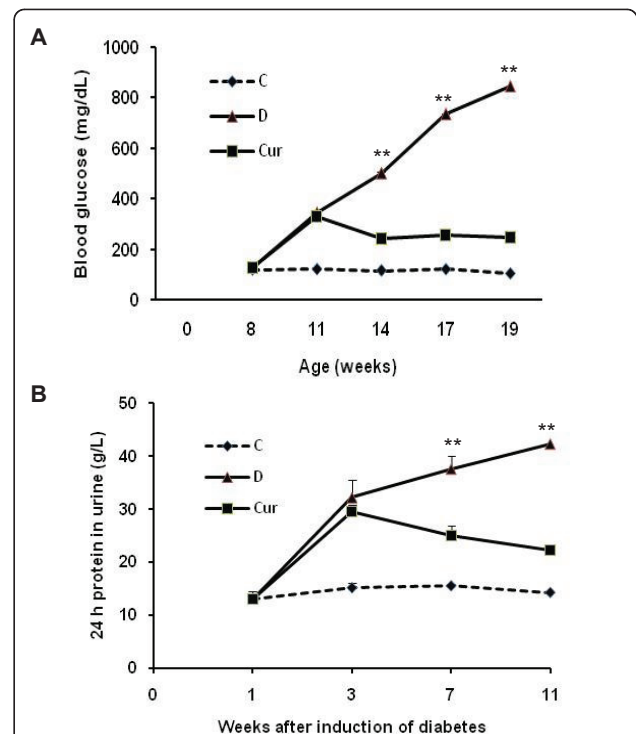


Figure 1 Time-course changes in blood glucose (A) and 24 h urine protein (B). Blood glucose as well as 24 h urine protein increased progressively in the untreated diabetic rats following induction of diabetes. Curcumin treatment significantly reduced blood glucose and 24 h urine protein in the beginning of treatment and these were maintained throughout the study period until sacrifice. Values are means ± SEM. ***p* < 0.01 vs Curcumin.

Histology

Normal histology was seen in the control rats (Figure 2A). On the other hand, histological examination of the kidney of diabetic rats had marked histological changes in the glomerular and tubular structure (Figure 2B). In the untreated diabetic rats, 64% of the glomeruli were segmentally sclerosed (Figure 2J), whereas curcumin-treated rats developed only 27.4% ($p < 0.05$ compared with untreated diabetic rats) segmental sclerosis (Figure 2C,J).

Effect of curcumin on macrophage infiltration

Kidneys from control rats did not show any significant macrophage infiltration (Figure 2D). On the other hand,

diabetic rats demonstrated prominent macrophage (ED-1-positive cells) infiltration in the glomerulus (Figure 2E, K), whereas diabetic rats treated with curcumin showed marked reduction of macrophage influx by 32% ($p < 0.01$) (Figure 2F,K).

Effect of curcumin on NF- κ B and I κ B α

In this study (Figure 3A,B), we observed that cytosolic I κ B α in the kidney of diabetic rats was significantly lower than in the control ($p < 0.05$) and curcumin treatment significantly reduced I κ B α degradation ($p < 0.05$). In addition, NF- κ B was activated, which is measured by the extent of phosphorylation of its p65 regulatory

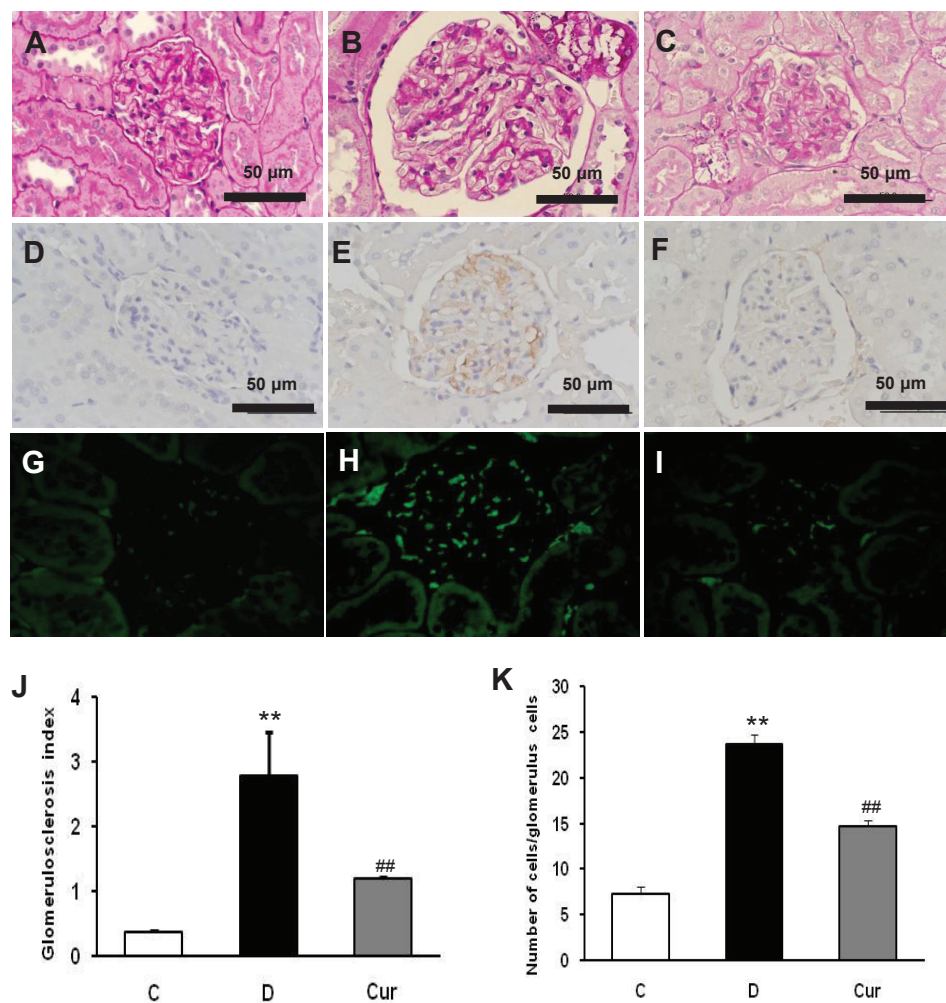
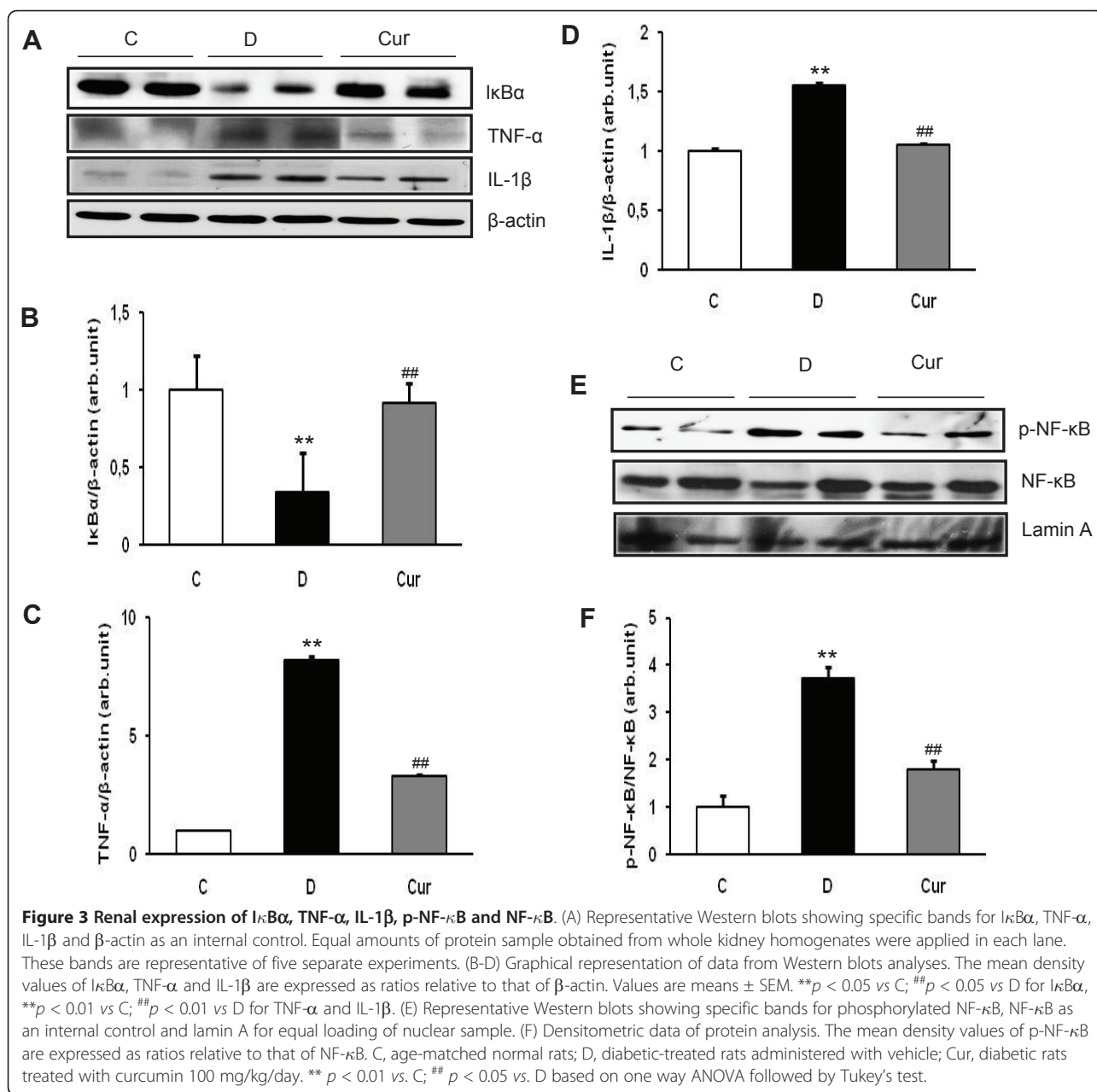


Figure 2 Histological staining with Periodic acid-Schiff's (PAS) in glomeruli (A-C) shows the glomerular and tubulointerstitial structure of a normal rat kidney (A), diabetic rat kidney (B), in which significant changes in glomerular and tubulointerstitial structure were noted. Diabetic rat developed the pathological characteristics of early diabetic nephropathy, including glomerular hypertrophy, mesangial expansion and sclerosis of glomerulus (B). (C) Diabetic rat treated with curcumin showed amelioration of sclerosis of glomerulus. D-F: immunohistochemistry staining for macrophage (ED-1-positive cells). G-I: immunofluorescence staining for ICAM-1 in glomeruli. Kidney tissues were harvested from normal rat as a control (A, D, G), diabetic rat (B, E, H) and curcumin-treated rat (C, F, I). Quantification results are shown for glomerulosclerosis index in each group (J) and number of macrophages (ED-1-positive cells) (K). Values are means \pm SEM. ** $p < 0.05$ vs C; ## $p < 0.05$ vs D (J). ** $p < 0.05$ vs C; ## $p < 0.01$ vs D (K).



subunit (p-NF-κB) in diabetic rats compared with that of controls. Curcumin treatment to the diabetic rats resulted in a mitigatory effect and showed decreased levels of activated NF-κB compared with that of diabetic rats (Figure 3E,F), in which nuclear NF-κB was 3.73 fold higher in diabetic rats than in the control (*p* < 0.01) and curcumin treatment decreases the activated NF-κB by 2.08 fold than in untreated diabetic rats (*p* < 0.05).

Effect of curcumin on renal expression of TNF-α and IL-1β

Renal TNF-α and IL-1β protein expression assessed by Western blotting and were significantly increased in

diabetic rats compared with those in control rats (*p* < 0.05), where as curcumin treatment significantly abrogated these increases in diabetic rats (*p* < 0.01) (Figure 3A,C,D). In line with protein analysis, renal TNF-α and IL-1β mRNA expression assessed by real-time PCR were also significantly higher in diabetic rats compared with those in control rats (*p* < 0.05), and curcumin treatment significantly attenuated the increased renal TNF-α and IL-1β mRNA expression (*p* < 0.05). The TNF-α/GAPDH mRNA and IL-1β/GAPDH mRNA ratios was 2.3 and 2.6 fold higher in diabetic rats compared with control rats, respectively, and curcumin treatment

ameliorated these increases by 1.7 and 2.5 fold, respectively (Figure 4A,B).

Effect of curcumin on renal ICAM-1 and TGF- β_1 protein expression

Western blot analysis showed that the renal ICAM-1 protein expression was increased by 2.2 fold in the diabetic rats compared with that in the control rats ($p < 0.05$) and treatment with curcumin significantly decreased ICAM-1 protein levels in the diabetic kidney ($p < 0.05$) (Figure 5A, B). This finding was correlated with immunofluorescence staining, in which, ICAM-1 expression in renal tissues was significantly enhanced in diabetic rats compared with non-diabetic rats (Figure 2H), where as curcumin suppressed the increased intensity of ICAM-1 expression in the diabetic rats (Figure 2I). Western blot analysis also demonstrated a significant increase of renal TGF- β_1 expression in the diabetic rats when compared with that in the control rats, which was significantly attenuated by treatment with curcumin (Figure 5A,B).

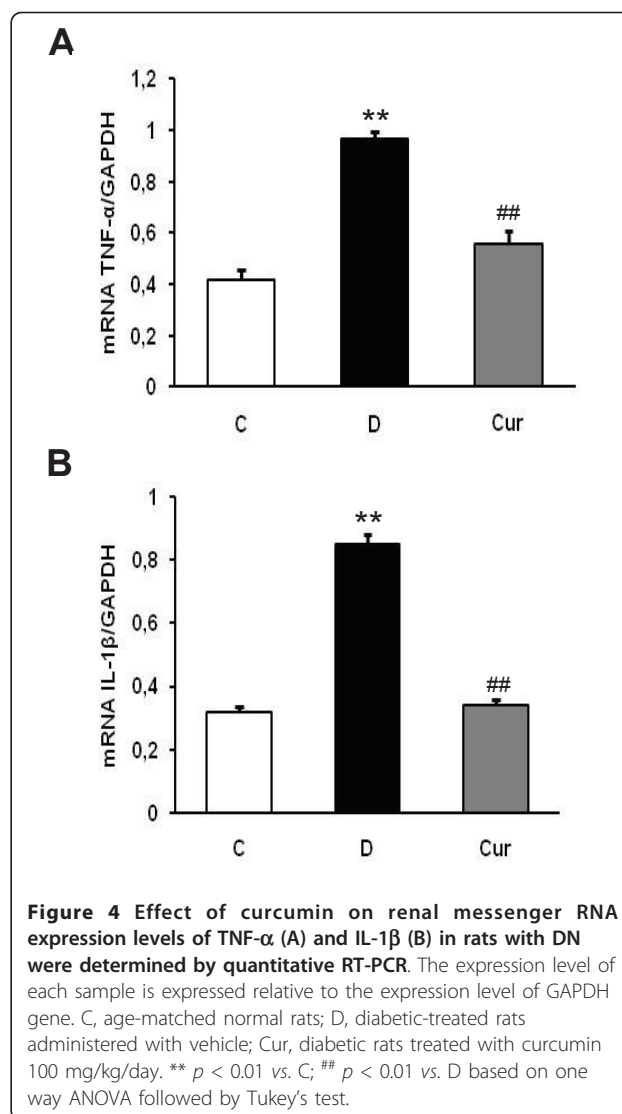
Effect of curcumin on renal expression of MCP-1

MCP-1 is a chemokine that play an important role in the progression of DN. Using Western blot analysis we found that renal MCP-1 protein expression was increased by 1.5 fold in diabetic rats compared with that in the control rats ($p < 0.05$). This increase in renal MCP-1 protein expression was markedly suppressed by curcumin treatment in the diabetic rats ($p < 0.05$) (Figure 5A,D).

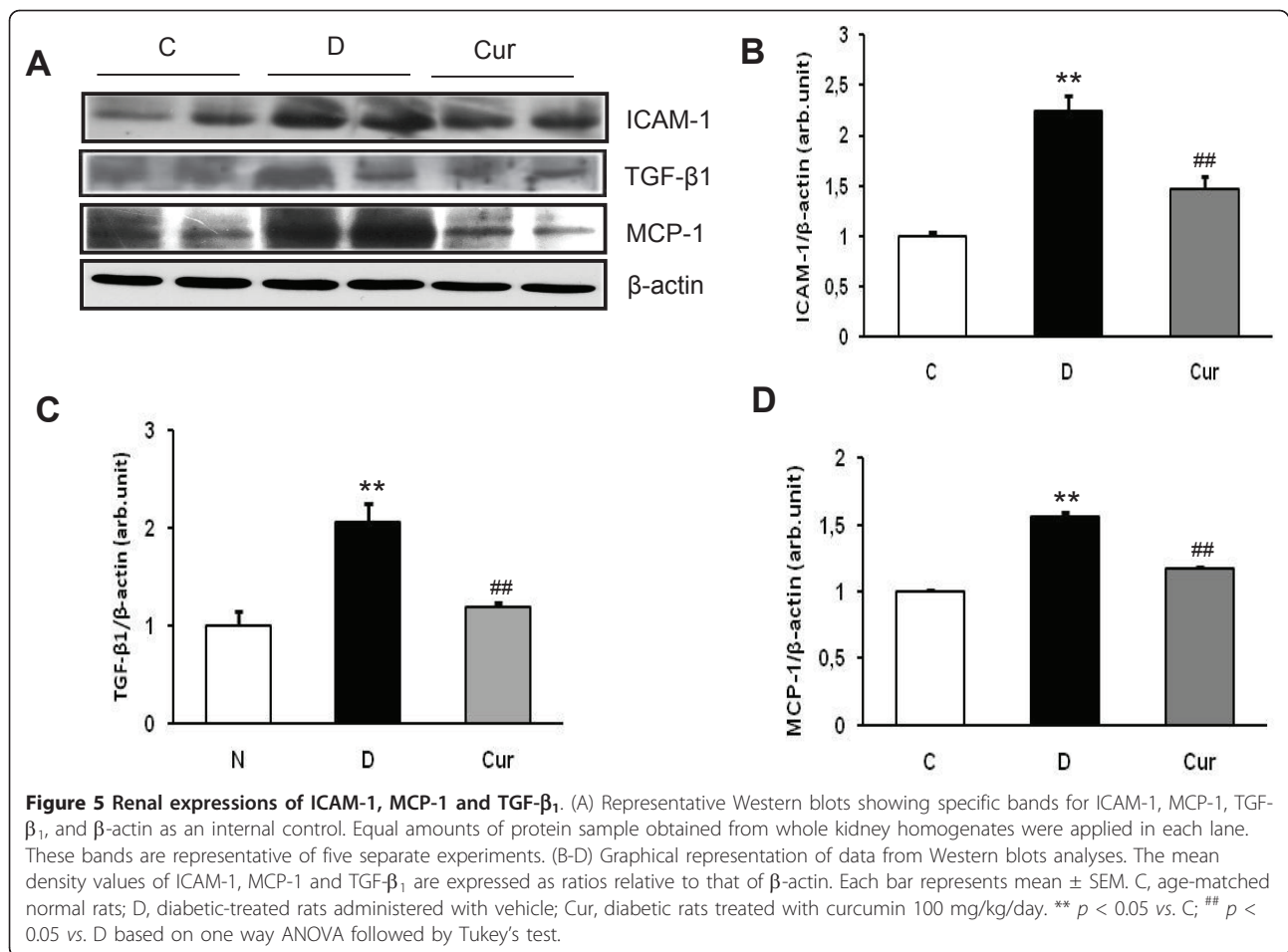
Discussion

Macrophage accumulation and activation in the kidney have been shown to correlate with the onset of DN [4]. Using accumulation of ED-1 as a marker of macrophage activation, we have demonstrated increased activation of macrophage in the glomeruli of kidney tissue from diabetic animals. In this study, we demonstrate for the first time that macrophage infiltration in diabetic glomeruli is ameliorated by the administration of curcumin. In addition, the results of this study suggest that the anti-inflammatory effect of curcumin in DN is partly mediated by inhibiting ICAM-1 and MCP-1 expression under diabetic conditions. We also found that curcumin significantly suppressed NF- κ B activity, a major transcriptional factor of many proinflammatory genes as well as reduced the degradation of cytosolic I κ B α : as a consequence, the level of proinflammatory cytokines, TNF- α and IL-1 β were further significantly decreased.

Curcumin is a highly pleiotropic molecule capable of interacting with numerous molecular targets involved in inflammation. Curcumin has been reported to modulate the inflammatory response by inhibiting the production of the inflammatory cytokines IL-8, monocyte inflammatory



protein (MIP)-1 α , MCP-1, IL-1 β and TNF- α by monocyte and macrophage [25]. The beneficial effects of curcumin have also been demonstrated in several experimental kidney disease models [20,28-32]. Ghosh *et al.* [28] showed that curcumin treatment improved kidney function in animals with chronic renal failure by antagonizing the effect of TNF- α elicited NF- κ B activation and macrophage infiltration, indicating that the anti-inflammatory property of curcumin may be responsible for alleviating chronic renal failure in nephrectomized animals. A recent study also demonstrated that curcumin treatment significantly reduced obesity induced inflammatory response and macrophage infiltration of white adipose tissue in murine models of insulin-resistant obesity and decreased hepatic NF- κ B activity, an effect associated with decreased hepatic expression of inflammatory molecules [33,34]. Chiu *et al.* reported that curcumin prevents diabetes-associated



abnormalities in the kidneys through the inhibition of NF- κ B activation and p300 [20]. Curcumin is also known as an established inhibitor of NF- κ B activation [35] and has recently been shown to specifically target inhibitory kappa B kinase (I κ B) [19]. However, it is still unknown whether anti-inflammatory mechanism of curcumin through the inhibition of macrophage infiltration, might offer the renal protective effect in type I.

In recent years, several clinical and animal studies have indicated that inflammatory cytokines play an important roles in the development and progression of DN [36,37]. Schmid *et al.* have reported that upregulation of NF- κ B targets, a master transcriptional gene play a role in inflammatory response in the kidney of the patients with progressive DN [38]. NF- κ B is present in the cytoplasm complexed to its inhibitory protein known as I κ B. After activation by a number of physiological and nonphysiological stimuli, such as IL-1 β , TNF- α , or lipopolysaccharide, I κ B dissociates from NF- κ B within minutes and undergoes ubiquitination and degradation. Once NF- κ B is released from the inhibitory unit I κ B, the NF- κ B is then translocated into the nucleus. Upon its nuclear

translocation, NF- κ B undergoes phosphorylation on serine 276 in its p65 subunit and associates with surrounding chromatin components. It subsequently binds with DNA and promotes the transcription of proinflammatory cytokines, such as TNF- α and IL-1 β . Previous study has reported that phosphorylation on serine 276 is essential for NF- κ B p65-dependent cellular responses [39]. Therefore, measurement of the phosphorylated p65 subunit of NF- κ B is an effective tool for determining NF- κ B activation [12,40]. Our results showed that activation of NF- κ B and degradation of I κ B α , as well as proinflammatory cytokines expression, TNF- α and IL-1 β were increased in diabetic rats compared with the levels in control rats (Figures. 3 and 4). Curcumin treatment prevented all of these alterations. We believe that the curcumin's ability to inactivate NF- κ B [41] and thus inhibited the production of proinflammatory cytokines [29] is its most likely mechanisms of action.

Macrophages are known to cause early glomerular injury in STZ-induced diabetes and also to be involved in the mechanisms that cause progressive glomerular and tubular damage [5,10,42,43]; in addition, ICAM-1

and MCP-1 are considered as a central molecule involved in macrophage influx in DN [9,11,44-46]. Park *et al.* have demonstrated that high glucose could upregulate ICAM-1 protein and mRNA expression in rat mesangial cells through the protein kinase C-NF- κ B pathways [11,14]. ICAM-1 is also induced by inflammatory cytokines such as TNF- α , IL-1, and interferon- γ [47]. Recent studies provided evidences that both ICAM-1 gene deficiency [10,45] and anti-ICAM-1 monoclonal antibody [11] obviously inhibited the infiltration of monocytes/macrophages into the glomerulus and alleviated the extent of renal injury. Studies have also demonstrated that NF- κ B was involved in the induction of MCP-1 in mesangial cell cultured under high glucose condition and subsequently mediated macrophage accumulation [9,48,49]. Consistent with these previous reports, we have also observed that ICAM-1 and MCP-1 expression were increased in rats with experimental DN (Figure 5), which was associated with marked macrophages infiltration (Figure 2), and that these increases under diabetic conditions were ameliorated by curcumin treatment. This effect might be mediated by curcumin's inhibition of NF- κ B activation.

In the present study, diabetic glomerulosclerosis was ameliorated along with the inhibition of macrophage infiltration (Figure 2). Accumulating evidence suggests that, in DN, glomerulosclerosis is associated with TGF- β ₁ expression [50,51], which is related to macrophage infiltration in glomeruli [52]. TGF- β ₁ is assumed to mediate inflammatory response and exaggerate the progression of DN [53]. In vitro and in vivo studies have reported that macrophages stimulates mesangial cells to produce ECM proteins through TGF- β [44,54,55]. TGF- β can in turn induce ECM overproduction from mesangial cells in autocrine and paracrine fashions [45]. Previous study has revealed that infiltrated monocytes/macrophages release lysosomal enzymes, nitrous oxide, reactive oxygen intermediates and TGF- β , which have been reported to play an essential role in renal damage and the depletion of macrophage by irradiation decreased the gene expression of TGF- β and type IV collagen in the glomeruli of diabetic rats at 4 weeks after induction of diabetes, suggesting the pathological role of macrophages in the increased expression of ECM proteins [56,57]. From the above results it is obvious that macrophage infiltration is an important inducer of TGF- β ₁. The TGF- β ₁ contains a sequence located -715 to -707 bp where NF- κ B binds to target TGF- β ₁ gene expression [58]. Thus, following NF- κ B activation, marked infiltration of macrophages subsequently upregulated the TGF- β ₁ expression which further promotes the increased ECM synthesis in diabetes. Our results show that renal TGF- β ₁ protein expression was significantly increased in diabetic rats. Curcumin treatment obviously decreased renal TGF- β ₁ expression and

this improvement was achieved most probably via the inhibition of NF- κ B activation. Taken together, all the above results suggest that beneficial effect of curcumin in rats with DN is at least in part through inhibition of macrophage infiltration via inhibiting NF- κ B mediated inflammatory response.

Conclusion

We have shown that the curcumin treatment ameliorated DN in rat model of type I diabetes through the inhibition of macrophage infiltration in glomerulus due to its anti-inflammatory effect. In addition, our results support the findings that curcumin has a property to inhibit the activity of NF- κ B as well as the degradation of I κ B α and as a result decreased the expression of proinflammatory and profibrotic cytokines. Given these promising preclinical findings, we believe that the curcumin might be considered as potential adjuvant entity for preventing DN.

Acknowledgements

This research was supported by a Yujin Memorial Grant, Ministry of Education, Culture, Sports and Technology of Japan and by a grant from the Promotion and Mutual Aid Corporation for Private Schools, Japan. We thank Wawaimuli Arozal, Sayaka Mito, Yoshiyasu Kobayashi and Somasundaram Arumugam for their assistance in this research work.

Author details

¹Department of Clinical Pharmacology, Faculty of Pharmaceutical Sciences, Niigata University of Pharmacy and Applied Life Sciences, Niigata City, Japan.

²Department of Pharmacology, Faculty of Medicine, University of Indonesia, Jakarta, Indonesia. ³Department of Gastroenterology and Hepatology, Niigata University Graduate School of Medical and Dental Sciences, Niigata, Japan.

⁴Department of Cell Biology, Institute of Nephrology, Niigata University Graduate School of Medical and Dental Sciences, Niigata, Japan.

Authors' contributions

VS and KW made substantial contributions to the conception and design of the study, analysis and interpretations of data, as well as gave final approval for the version to be published. FRS, PTV, and RAT participated in revising the manuscript. MH, APL, and HK, helped in the interpretation of data. VKS and KS participated in carrying out the RT-PCR. All authors contributed to the drafting of the manuscript and agreed on the final version of the manuscript.

Competing interests

The authors declare that they have no competing interests.

Received: 18 March 2011 Accepted: 10 June 2011

Published: 10 June 2011

References

1. Svensson M, Sundkvist G, Arnqvist HJ, Björk E, Blohmé G, Bolinder J, Henricsson M, Nyström L, Torffvit O, Waernbaum I, Ostman J, Eriksson JW: Diabetes Incidence Study in Sweden (DISS). Signs of nephropathy may occur early in young adults with diabetes despite modern diabetes management: results from the nationwide population-based Diabetes Incidence Study in Sweden (DISS). *Diabetes Care* 2003, **26**:2903-2909.
2. Tuttle KR: Linking metabolism and immunology: diabetic nephropathy is an inflammatory disease. *J Am Soc Nephrol* 2005, **16**:1537-1538.
3. Furuta T, Saito T, Ootaka T, Soma J, Obara K, Abe K, Yoshinaga K: The role of macrophages in diabetic glomerulosclerosis. *Am J Kidney Dis* 1993, **21**:480-485.

4. Chow F, Ozols E, Nikolic-Paterson DJ, Atkins RC, Tesch GH: **Macrophages in mouse type 2 diabetic nephropathy: correlation with diabetic state and progressive renal injury.** *Kidney Int* 2004, **65**:116-128.
5. Sassy-Prigent C, Heudes D, Mandet C, Bélair MF, Michel O, Perdereau B, Bariéty J, Bruneval P: **Early glomerular macrophage recruitment in streptozotocin-induced diabetic rats.** *Diabetes* 2000, **49**:466-475.
6. Amann B, Tinzmann R, Angelkort B: **ACE inhibitors improve diabetic nephropathy through suppression of renal MCP-1.** *Diabetes Care* 2003, **26**:2421-2425.
7. Wada T, Furuichi K, Sakai N, Iwata Y, Yoshimoto K, Shimizu M, Takeda SI, Takasawa K, Yoshimura M, Kida H, Kobayashi KI, Mukaida N, Naito T, Matsushima K, Yokoyama H: **Up-regulation of monocyte chemoattractant protein-1 in tubulointerstitial lesions of human diabetic nephropathy.** *Kidney Int* 2000, **58**:1492-1499.
8. Banba N, Nakamura T, Matsumura M, Kuroda H, Hattori Y, Kasai K: **Possible relationship of monocyte chemoattractant protein-1 with diabetic nephropathy.** *Kidney Int* 2000, **58**:684-690.
9. Chow FY, Nikolic-Paterson DJ, Ozols E, Atkins RC, Rollin BJ, Tesch GH: **Monocyte chemoattractant protein-1 promotes the development of diabetic renal injury in streptozotocin-treated mice.** *Kidney Int* 2006, **69**:73-80.
10. Chow FY, Nikolic-Paterson DJ, Atkins RC, Tesch GH: **Macrophages in streptozotocin-induced diabetic nephropathy: potential role in renal fibrosis.** *Nephrol Dial Transplant* 2004, **19**:2987-2996.
11. Sugimoto H, Shikata K, Hirata K, Akiyama K, Matsuda M, Kushiro M, Shikata Y, Miyatake N, Miyasaka M, Makino H: **Increased expression of intercellular adhesion molecule-1 (ICAM-1) in diabetic rat glomeruli: glomerular hyperfiltration is a potential mechanism of ICAM-1 upregulation.** *Diabetes* 1997, **46**:2075-2081.
12. Guijarro C, Egido J: **Transcription factor-kappa B (NF-kappa B) and renal disease.** *Kidney Int* 2001, **59**:415-424.
13. Park CW, Kim JH, Lee JH, Kim YS, Ahn HJ, Shin YS, Kim SY, Choi EJ, Chang YS, Bang BK: **High glucose-induced intercellular adhesion molecule-1 (ICAM-1) expression through an osmotic effect in rat mesangial cells is PKC-NF-kappaB-dependent.** *Diabetologia* 2000, **43**:1544-1553.
14. Jiang Q, Liu P, Wu X, Liu W, Shen X, Lan T, Xu S, Peng J, Xie X, Huang H: **Berberine attenuates lipopolysaccharide-induced extracellular matrix accumulation and inflammation in rat mesangial cells: involvement of NF-kB signaling pathway.** *Mol Cell Endocrinol* 2011, **331**:34-40.
15. Mezzano S, Aros C, Droguett A, Burgos ME, Ardiles L, Flores C, Schneider H, Ruiz-Ortega M, Egido J: **NF-kappaB activation and overexpression of regulated genes in human diabetic nephropathy.** *Nephrol Dial Transplant* 2004, **19**:2505-2512.
16. Riad A, Du J, Stiehl S, Westermann D, Mohr Z, Sobirey M, Doehner W, Adams V, Pauschinger M, Schultheiss HP, Tschöpe C: **Low-dose treatment with atorvastatin leads to anti-oxidative and anti-inflammatory effects in diabetes mellitus.** *Eur J Pharmacol* 2007, **569**:204-211.
17. Hatcher H, Planalp R, Cho J, Torti FM, Torti SV: **Curcumin: from ancient medicine to current clinical trials.** *Cell Mol Life Sci* 2008, **65**:1631-1652.
18. Shishodia S, Sethi G, Aggarwal BB: **Curcumin: getting back to the roots.** *Ann N Y Acad Sci* 2005, **1056**:206-217.
19. Aggarwal S, Ichikawa H, Takada Y, Sandur SK, Shishodia S, Aggarwal BB: **Curcumin (diferuloylmethane) down-regulates expression of cell proliferation and antiapoptotic and metastatic gene products through suppression of IkbppaBalpha kinase and Akt activation.** *Mol Pharmacol* 2006, **69**:195-206.
20. Chiu J, Khan ZA, Farhangkhooie H, Chakrabarti S: **Curcumin prevents diabetes-associated abnormalities in the kidneys by inhibiting p300 and nuclear factor-kappaB.** *Nutrition* 2009, **25**:964-972.
21. Kuwabara N, Tamada S, Iwai T, Teramoto K, Kaneda N, Yukimura T, Nakatani T, Miura K: **Attenuation of renal fibrosis by curcumin in rat obstructive nephropathy.** *Urology* 2006, **67**:440-446.
22. Watanabe K, Ohta Y, Nakazawa M, Higuchi H, Hasegawa G, Naito M, Fuse K, Ito M, Hirono S, Tanabe N, Hanawa H, Kato K, Kodama M, Aizawa Y: **Low dose carvedilol inhibits progression of heart failure in rats with dilated cardiomyopathy.** *Br J Pharmacol* 2000, **130**:1489-1495.
23. Jain SK, Rains J, Croad J, Larson B, Jones K: **Curcumin supplementation lowers TNF-alpha, IL-6, IL-8, and MCP-1 secretion in high glucose-treated cultured monocytes and blood levels of TNF-alpha, IL-6, MCP-1, glucose, and glycosylated hemoglobin in diabetic rats.** *Antioxid Redox Signal* 2009, **11**:241-249.
24. Bagheri F, Gol A, Dabiri S, Javadi A: **Preventive effect of garlic juice on renal reperfusion injury.** *Iran J Kidney Dis* 2011, **5**:194-200.
25. Thallas-Bonke V, Thorpe SR, Coughlan MT, Fukami K, Yap FY, Sourris KC, Penfold SA, Bach LA, Cooper ME, Forbes JM: **Inhibition of NADPH oxidase prevents advanced glycation end product-mediated damage in diabetic nephropathy through a protein kinase C-alpha-dependent pathway.** *Diabetes* 2008, **57**:460-469.
26. Ohga S, Shikata K, Yozai K, Okada S, Ogawa D, Usui H, Wada J, Shikata Y, Makino H: **Thiazolidinedione ameliorates renal injury in experimental diabetic rats through anti-inflammatory effects mediated by inhibition of NF-kappaB activation.** *Am J Physiol Renal Physiol* 2007, **292**:F1141-F1150.
27. Thandavarayan RA, Watanabe K, Ma M, Veeraveedu PT, Gurusamy N, Palaniyandi SS, Zhang S, Muslin AJ, Kodama M, Aizawa Y: **14-3-3 protein regulates Ask1 signaling and protects against diabetic cardiomyopathy.** *Biochem Pharmacol* 2008, **75**:1797-1806.
28. Ghosh SS, Massey HD, Krieg R, Fazalbhoy ZA, Ghosh S, Sica DA, Fakhry I, Gehr TW: **Curcumin ameliorates renal failure in 5/6 nephrectomized rats: role of inflammation.** *Am J Physiol Renal Physiol* 2009, **296**:F1146-F1157.
29. Abe Y, Hashimoto S, Horie T: **Curcumin inhibition of inflammatory cytokine production by human peripheral blood monocytes and alveolar macrophages.** *Pharmacol Res* 1999, **39**:41-47.
30. Kuhad A, Pilkhwal S, Sharma S, Tirkey N, Chopra K: **Effect of curcumin on inflammation and oxidative stress in cisplatin-induced experimental nephrotoxicity.** *J Agric Food Chem* 2007, **55**:10150-10155.
31. Ghosh SS, Salloum FN, Abbate A, Krieg R, Sica DA, Gehr TW, Kukreja RC: **Curcumin prevents cardiac remodeling secondary to chronic renal failure through deactivation of hypertrophic signaling in rats.** *Am J Physiol Heart Circ Physiol* 2010, **299**:H975-H984.
32. Tirkey N, Kaur G, Vij G, Chopra K: **Curcumin, a diferuloylmethane, attenuates cyclosporine-induced renal dysfunction and oxidative stress in rat kidneys.** *BMC Pharmacol* 2005, **5**:15.
33. Weisberg SP, Leibel R, Tortoriello DV: **Dietary curcumin significantly improves obesity-associated inflammation and diabetes in mouse models of diabetes.** *Endocrinology* 2008, **149**:3549-3558.
34. Woo HM, Kang JH, Kawada T, Yoo H, Sung MK, Yu R: **Active spice-derived components can inhibit inflammatory responses of adipose tissue in obesity by suppressing inflammatory actions of macrophages and release of monocyte chemoattractant protein-1 from adipocytes.** *Life Sci* 2007, **13**:926-931.
35. Singh S, Khar A: **Activation of NFkappaB and Ub-proteasome pathway during apoptosis induced by a serum factor is mediated through the upregulation of the 26S proteasome subunits.** *Apoptosis* 2006, **11**:845-859.
36. Navarro JF, Mora C: **Role of inflammation in diabetic complications.** *Nephrol Dial Transplant* 2005, **20**:2601-2604.
37. Wolkow PP, Niewczas MA, Perkins B, Ficociello LH, Lipinski B, Warram JH, Krolewski AS: **Association of urinary inflammatory markers and renal decline in microalbuminuric type 1 diabetics.** *J Am Soc Nephrol* 2008, **19**:789-797.
38. Schmid H, Boucherot A, Yasuda Y, Henger A, Brunner B, Eichinger F, Nitsche A, Kiss E, Bleich M, Gröne HJ, Nelson PJ, Schlöndorff D, Cohen CD, Kretzler M: **Modular activation of nuclear factor-kappaB transcriptional programs in human diabetic nephropathy.** *Diabetes* 2006, **55**:2993-3003.
39. Okazaki T, Sakon S, Sasazuki T, Sakurai H, Doi T, Yagita H, Okumura K, Nakano H: **Phosphorylation of serine 276 is essential for p65 NF-kappaB subunit-dependent cellular responses.** *Biochem Biophys Res Commun* 2003, **300**:807-812.
40. Jain SK, Velusamy T, Croad JL, Rains JL, Bull R: **L-cysteine supplementation lowers blood glucose, glycated hemoglobin, CRP, MCP-1, and oxidative stress and inhibits NF-kappaB activation in the livers of Zucker diabetic rats.** *Free Radic Biol Med* 2009, **46**:1633-1638.
41. Singh S, Aggarwal BB: **Activation of transcription factor NF-kappa B is suppressed by curcumin (diferuloylmethane).** *J Biol Chem* 1995, **270**:24995-5000.
42. Ikezumi Y, Hurst LA, Masaki T, Atkins RC, Nikolic-Paterson DJ: **Adoptive transfer studies demonstrate that macrophages can induce proteinuria and mesangial cell proliferation.** *Kidney Int* 2003, **63**:83-95.
43. Nikolic-Paterson DJ, Atkins RC: **The role of macrophages in glomerulonephritis.** *Nephrol Dial Transplant* 2001, **16**:3-7.

44. Chow FY, Nikolic-Paterson DJ, Ozols E, Atkins RC, Tesch GH: **Intercellular adhesion molecule-1 deficiency is protective against nephropathy in type 2 diabetic db/db mice.** *J Am Soc Nephrol* 2005, **16**:1711-1722.
45. Okada S, Shikata K, Matsuda M, Ogawa D, Usui H, Kido Y, Nagase R, Wada J, Shikata Y, Makino H: **Intercellular adhesion molecule-1-deficient mice are resistant against renal injury after induction of diabetes.** *Diabetes* 2003, **52**:2586-2593.
46. Chow FY, Nikolic-Paterson DJ, Ma FY, Ozols E, Rollins BJ, Tesch GH: **Monocyte chemoattractant protein-1-induced tissue inflammation is critical for the development of renal injury but not type 2 diabetes in obese db/db mice.** *Diabetologia* 2007, **50**:471-480.
47. Wertheimer SJ, Myers CL, Wallace RW, Parks TP: **Intercellular adhesion molecule-1 gene expression in human endothelial cells. Differential regulation by tumor necrosis factor-alpha and phorbol myristate acetate.** *J Biol Chem* 1992, **267**:12030-12035.
48. Marumo T, Schini-Kerth VB, Busse R: **Vascular endothelial growth factor activates nuclear factor-kappaB and induces monocyte chemoattractant protein-1 in bovine retinal endothelial cells.** *Diabetes* 1999, **48**:1131-1137.
49. Ha H, Yu MR, Choi YJ, Kitamura M, Lee HB: **Role of high glucose-induced nuclear factor-kappaB activation in monocyte chemoattractant protein-1 expression by mesangial cells.** *J Am Soc Nephrol* 2002, **13**:894-902.
50. Chen S, Jim B, Ziyadeh FN: **Diabetic nephropathy and transforming growth factor-beta: transforming our view of glomerulosclerosis and fibrosis build-up.** *Semin Nephrol* 2003, **23**:532-543.
51. Ziyadeh FN, Hoffman BB, Han DC, Iglesias-De La Cruz MC, Hong SW, Isono M, Chen S, McGowan TA, Sharma K: **Long-term prevention of renal insufficiency, excess matrix gene expression, and glomerular mesangial matrix expansion by treatment with monoclonal antitransforming growth factor-beta antibody in db/db diabetic mice.** *Proc Natl Acad Sci USA* 2000, **97**:8015-8020.
52. Cohen MP, Shea E, Chen S, Shearman CW: **Glycated albumin increases oxidative stress, activates NF-kappa B and extracellular signal-regulated kinase (ERK), and stimulates ERK-dependent transforming growth factor-beta 1 production in macrophage RAW cells.** *J Lab Clin Med* 2003, **141**:242-249.
53. Murphy M, Crean J, Brazil DP, Sadlier D, Martin F, Godson C: **Regulation and consequences of differential gene expression in diabetic kidney disease.** *Biochem Soc Trans* 2008, **36**:941-945.
54. Pawluczuk IZ, Harris KP: **Macrophages promote proslclerotic responses in cultured rat mesangial cells: a mechanism for the initiation of glomerulosclerosis.** *J Am Soc Nephrol* 1997, **8**:1525-1536.
55. Leonarduzzi G, Scavazza A, Biasi F, Chiarotto E, Camandola S, Vogel S, Dargel R, Poli G: **The lipid peroxidation end product 4-hydroxy-2,3-nonenal up-regulates transforming growth factor beta1 expression in the macrophage lineage: a link between oxidative injury and fibrosclerosis.** *FASEB J* 1997, **11**:851-857.
56. Young BA, Johnson RJ, Alpers CE, Eng E, Gordon K, Floege J, Couser WG, Seidel K: **Cellular events in the evolution of experimental diabetic nephropathy.** *Kidney Int* 1995, **47**:935-944.
57. Sassy-Prigent C, Heudes D, Mandet C, Bélair MF, Michel O, Perdereau B, Bariéty J, Bruneval P: **Early glomerular macrophage recruitment in streptozotocin-induced diabetic rats.** *Diabetes* 2000, **49**:466-475.
58. Lan Y, Zhou Q, Wu ZL: **NF-kappa B involved in transcription enhancement of TGF-beta 1 induced by Ox-LDL in rat mesangial cells.** *Chin Med J (Engl)* 2004, **117**:225-230.

doi:10.1186/1743-7075-8-35

Cite this article as: Soetikno *et al.*: Curcumin ameliorates macrophage infiltration by inhibiting NF- κ B activation and proinflammatory cytokines in streptozotocin induced-diabetic nephropathy. *Nutrition & Metabolism* 2011 **8**:35.

Submit your next manuscript to BioMed Central and take full advantage of:

- Convenient online submission
- Thorough peer review
- No space constraints or color figure charges
- Immediate publication on acceptance
- Inclusion in PubMed, CAS, Scopus and Google Scholar
- Research which is freely available for redistribution

Submit your manuscript at
www.biomedcentral.com/submit

