



Impact of anatomic origin of primary squamous cell carcinomas of the nasal cavity and ethmoidal sinus on clinical outcome

Stefan Janik¹ · Mariel Gramberger¹ · Lorenz Kadletz¹ · Johannes Pammer² · Matthaeus Ch. Grasl¹ · Boban M. Erovic^{1,3}

Received: 21 May 2018 / Accepted: 16 July 2018 / Published online: 19 July 2018
© The Author(s) 2018

Abstract

Purpose Since squamous cell carcinomas (SCCs) of the nasoethmoidal complex are rare and aggressive malignancies, the purpose of this study was to evaluate whether anatomic subsites of SCCs of the nasal cavity and ethmoid sinuses affect clinical outcome.

Methods We retrospectively analyzed data from 47 patients with primary SCCs of the nasal cavity and ethmoid sinuses who were treated at the Department of Otorhinolaryngology, Head and Neck Surgery, Medical University of Vienna, between 1993 and 2018. The impact of anatomic subsites of nasoethmoidal SCCs was evaluated with respect to tumor and nodal classification, disease-free survival (DFS) and disease-specific survival (DSS).

Results Of the 47 cases, 17 SCCs (36.2%) originated from lateral nasal wall followed by 13 (27.7%) tumors of the edge of naris to mucocutaneous junction, 11 (23.4%) SCCs of the nasal septum, 3 tumors of the nasal floor (6.4%) and 3 SCCs of the ethmoid sinuses (6.4%), respectively. SCCs of the nasal septum were associated with significantly higher rates of neck node metastasis ($p = 0.007$), which represented a significantly worse prognostic factor for DSS (HR 7.87; $p < 0.001$). Moreover, advanced tumor stage (HR 5.38; $p = 0.014$) and tumor origin of nasal septum (HR 4.05; $p = 0.025$) were also significantly worse prognostic factors for DSS. Fourteen patients (29.8%) developed recurrent disease, including eight local (17.0%), five regional (10.6%) and one distant (2.1%) recurrence. Elective neck dissection (ND) was associated with lower (0 vs. 20.0%) but not significantly different regional and distant DFS ($p = 0.075$).

Conclusion Anatomic origin of nasal SCC has significant impact on clinical outcome. SCCs of the nasal septum were associated with higher rates of positive neck nodes and worse outcome.

Keywords Nasoethmoidal carcinoma · Nasal carcinoma · Nodal involvement · Anatomic subsite · Outcome · Elective neck dissection

Preliminary results were presented at the 61th Annual Meeting of the Austrian Society of Otorhinolaryngology, Head and Neck Surgery, Vienna, Austria, September 13–17, 2017.

✉ Boban M. Erovic
b.ervic@ekhwien.at

¹ Department of Otorhinolaryngology, Head and Neck Surgery, Medical University Vienna, Vienna, Austria

² Clinical Institute of Pathology, Medical University Vienna, Vienna, Austria

³ Institute of Head and Neck Diseases, Evangelical Hospital Vienna, Hans-Sachs Gasse 10-12, 1180 Vienna, Austria

Introduction

Carcinomas of the nasal cavity and paranasal sinuses represent orphan malignancies that account for less than 3% of head and neck tumors [1]. The vast majority of tumors are squamous cell carcinomas (SCCs) [1]. Patients with carcinomas of the nasal cavity typically develop early symptoms, including epistaxis or pain, fostering early diagnosis and therapy, in contrast to carcinomas of the paranasal sinuses [1].

Due to aggressive local spread, rapid growth and tendency for local and regional recurrence, management of sinonasal SCCs is challenging [2, 3]. Radical tumor resection followed by either adjuvant radiotherapy or observation represents the mainstay of therapy [4]. Particularly,

endoscopic approaches are increasingly used in treatment of nasal cavity SCCs beside traditional open approaches, such as lateral rhinectomy or degloving facial approaches [5].

Five-year disease specific survival (DSS) ranges from 50 to 80% [6–11]. Nodal involvement, advanced tumor stage and larger tumor size are worse prognostic factors for outcome [1, 2]. Nodal involvement represents a strong worse prognostic factor that results in almost a halving of survival [6–11]. A recently published meta-analysis among 1283 patients with sinonasal carcinomas revealed that elective neck treatment could reduce the risk of regional recurrence [2]. Despite that, the prognostic impact of elective neck treatment or neck dissection (ND) in nasoethmoidal SCCs has not yet been fully elucidated.

Moreover, the impact of human papilloma virus (HPV) infection on outcome in nasal SCCs has been evaluated. First results indicate that HPV positivity seems to represent a favorable prognostic factor for survival [12, 13], while histologic grade does not [11].

Sinonasal carcinomas are differentiated according to the American Joint Committee on Cancer (AJCC), into tumors arising from the nasal cavity and ethmoid sinuses (nasoethmoidal complex) or tumors arising from the maxillary sinuses [14]. Turner JH et al. could show that survival and outcome of patients with sinonasal cancer significantly differ according to histology and tumor site [1]. While it is already known that the location and extend of lesion within maxillary sinus has prognostic significance [14], it is unknown whether anatomic subsites of nasoethmoidal SCCs have also impact on clinical outcome.

Therefore, it was the primary aim of the study to assess the impact of anatomic subsites on outcome in patients with SCCs of the nasal cavity and ethmoid sinuses. Additional information regarding association of anatomic subsite and tumor behavior might be helpful to identify those patients with increased risk for nodal involvement and worse outcome. As a consequence, initial treatment, including elective nodal therapy and oncologic follow-up could be optimized to improve outcome of these patients.

Materials and methods

Study population

This retrospective study was conducted at the Department of Otorhinolaryngology, Head and Neck Surgery, Medical University of Vienna. We identified 57 patients with SCCs of the nasoethmoidal complex who were treated between 1993 and 2018. We excluded patients with carcinomas of the maxillary sinuses, nasal vestibule and those with primary carcinomas of the skin. Furthermore, 10 out of these 57 patients with SCCs of the nasoethmoidal complex were excluded

due to recurrent and primary disease. Hence, data of 47 patients with primary SCCs of the nasal cavity and ethmoid sinuses were available for analysis. Hospital medical records were used to obtain information regarding anatomic subsite, clinical characteristics, including symptoms, staging, tumor classification, histologic grading, p16 status, treatment, and outcome. Approval was obtained from the ethics committee of the Medical University Vienna (2329/2016).

Tumor characteristics

The most recent TNM staging system (8th edition) of the AJCC was used for clinical staging of nasal carcinomas [14]. Moreover, we differentiated nasoethmoidal SCCs according to their anatomic subsites, into malignancies originating from the lateral nasal wall, nasal septum, nasal floor, edge of naris to mucocutaneous junction and ethmoid sinus [14].

Additionally, p16 status, which represents an established surrogate marker for HPV infection in head and neck SCCs, was available and assessed in 35 out of 47 patients (74.5%) [15]. Immunohistochemical staining of p16 was routinely performed by the Clinical Institute of Pathology according to standardized protocols provided by Ventana (CINtec® p16 Histology Kit) [16]. Cytoplasmic staining intensity of tumor cells was calculated as 0 (none), weak (1), moderate (2) or strong (3). Specimens were only counted as positive if more than 90% of tumor cells showed strong (3) p16 expression.

Outcome analysis

We used disease free survival (DFS) and disease specific survival (DSS) as main outcome parameters for this study. DFS was calculated from date of surgery to date of recurrence or date of last follow-up. Conversely, DSS was calculated from date of surgery to the date of death from nasoethmoidal SCC or date of last follow-up. Unrelated deaths or unknown causes of death were censored.

Statistical methods

Statistical analyses were performed using SPSS software (version 22; IBM SPSS Inc., IL, USA). Descriptive statistics were used for analysis of demographic and clinical data, tumor characteristics, including histology, tumor classification and staging, anatomic subsites, therapy and outcome. Chi-square test was used to assess associations between nominal variables, such as lymph node classification and anatomic subsites. Additionally, unpaired Student's *t* test was used to analyze means of normally distributed variables of two independent groups. Kaplan–Meier analysis and log-rank test were performed to determine the impact of different clinical variables on DFS and DSS. Univariable Cox-regression analyses were calculated to assess the

prognostic value of following variables on DFS and DSS: T-classification (T1–T2 vs. T3–T4), N-classification (N neg. vs. N pos.), staging (stage I–II vs. III–IV), anatomic subsite (nasal septum vs. other), p16 status (pos. vs. neg.) and elective ND (yes vs. no). Due to the small patient number, multivariable Cox-regression analyses were not performed. Hazard ratios (HRs) and 95% confidence intervals (95% CI) are indicated. All tests were two-sided and *p* values below 0.05 were considered as statistically significant. Data are indicated as mean \pm standard deviation (SD) within result section. GraphPad Prism 7 (GraphPad Software Inc., California, USA) was used for graphical display of all box plots and Kaplan–Meier curves in this manuscript.

Results

Clinical data

For this study, we recruited a total of 47 patients, including 17 (36.2%) females and 30 (63.8%) males, with a mean age of 61.1 ± 14.2 years. All patients had primary SCCs of the nasal cavity or ethmoid sinuses.

Among them, 41 (87.2%) patients suffered from symptoms, while 6 (12.8%) did not. Epistaxis (27.7%) and pain (27.7%) were reported as leading symptoms followed by swelling (17.0%), foreign body sensation (8.5%) and nasal obstruction (6.4%). Median time between first occurrence of symptoms and diagnosis was 4.5 months (range 1–300 months). CT-scan and MRI were performed in 39 (83.0%) and 27 (57.4%) patients for clinical staging. Biopsy was performed in 45 out of 47 patients (95.7%) for diagnostic purpose and histologic evaluation, while in two patients small tumors were resected without previous biopsy.

Within our cohort, there were 30 smokers (63.8%), 10 patients with less (21.3%) and 20 patients (42.6%) with more than 20 pack/years. Additionally, 12 patients (25.5%) had already developed malignant disease, including four basal cell carcinomas, two colon carcinomas, two cervical cancers, two laryngeal carcinomas, one oropharyngeal carcinoma, one multiple myeloma and one melanoma (Table 1).

Tumor origin and tumor behavior

According to the 8th edition of the AJCC staging system, we had 20 patients with T1 (42.6%), 14 patients with T2 (29.8%), 6 patients with T3 (12.8%), 6 patients with T4a (12.8%) and 1 patient with T4b (2.1%) tumors. Mean tumor size was 2.3 ± 1.5 cm. At time of diagnosis, six patients (12.8%) presented with positive neck nodes, from which one had N1 (2.1%), three had N2b (6.4%) and two had N2c (3.0%) disease, respectively. Only one patient (2.1%) presented already with bone metastases in vertebral column

Table 1 Clinical characteristics

Clinical characteristics	Nr.	%
Sex		
Male	30	63.8
Female	17	36.2
Age, years (mean \pm SD)	61.1 ± 14.2	
Symptoms		
No symptoms	6	12.8
Symptoms	41	87.2
Epistaxis	13	27.7
Pain	13	27.7
Swelling	8	17.0
Foreign body sensation	4	8.5
Nasal obstruction	3	6.4
Duration of symptoms, months (median \pm SD)	4.5 ± 49.0	
Biopsy		
No	2	4.3
Yes	45	95.7
Staging		
Yes	47	100.0
CT	39	83.0
MRI	27	57.4
Smoking history		
Never	17	36.2
< 20 pack-years	10	21.3
> 20 pack-years	20	42.6
Previous malignancies		
Yes	12	25.5
No	35	74.5

SD Standard deviation, Nr. number of patients

(M1). Hence, we had 19 stage I (40.4%), 11 stage II (23.4%), 5 stage III (10.6%) and 12 stage IV (25.5%) patients (Table 2).

The majority of tumors originated from lateral nasal wall (36.2%) followed by tumors of the edge of naris to mucocutaneous junction (27.7%), nasal septum (23.4%), nasal floor (6.4%) and ethmoid sinuses (6.4%) (Table 2). T-classification significantly differ according to anatomic subsite ($p=0.022$; Fig. 1a). In particular, tumor originating from the edge of naris to mucocutaneous junction, lateral nasal wall and nasal floor presented in 100%, 70.6% and 66.7% with T1 and T2 SCCs compared to 54.5% and 33.3% T1 and T2 tumors in SCCs of the nasal septum and ethmoid sinuses, respectively.

Moreover, 5 out of 11 SCCs that originated from the nasal septum (45.5%) presented with positive neck nodes, while initial neck node involvement was rare in SCCs of other anatomic subsites ($p=0.007$; Fig. 1b). Except tumor origin, N-classification was not significantly influenced

Table 2 Tumor characteristics

Tumor characteristics	Nr.	%
T classification		
T1	20	42.6
T2	14	29.8
T3	6	12.8
T4a	6	12.8
T4b	1	2.1
N-classification		
N0	41	87.2
N1	1	2.1
N2	5	10.7
N2a	0	0
N2b	3	6.4
N2c	2	4.3
N3	0	0
M classification		
M0	46	97.9
M1	1	2.1
Tumor stage		
Stage I	19	40.4
Stage II	11	23.4
Stage III	5	10.6
Stage IV	12	25.5
Anatomic subsites		
Lateral wall	17	36.2
Edge of naris to mucocutaneous junction	13	27.7
Nasal septum	11	23.4
Floor	3	6.4
Ethmoid sinus	3	6.4
Grading		
G1 (well differentiated)	7	14.9
G2 (moderately differentiated)	29	61.7
G3 (poorly differentiated)	11	23.4
p16 status		
Negative	27	57.4
Positive	8	17.0
Unknown	12	25.5

Nr. Number of patients, T tumor classification, N lymph node status, M presence of metastasis

by T-classification (T1–T2 vs. T3–T4; $p=0.639$), tumor size ($p=0.880$), tumor grading ($p=0.511$) or p16 status ($p=0.189$), respectively.

Tumor grading and p16 status

Regarding tumor grading, 61.7% of SCCs were moderately differentiated (G2), 23.4% were poorly differentiated (G3) and 14.9% showed well differentiated (G1) morphology. Information of p16 status was available in 35 patients

(74.5%). Among them, positive and negative p16 expression was found in 17.0% ($n=8$) and 57.4% ($n=27$) of patients, and p16 status significantly corresponds to T-classification ($p=0.002$) (Table 2). In particular, 0%, 18.2%, 75.0% and 60% of T1, T2, T3 and T4a tumors were p16 positive (Fig. 2a), respectively. Furthermore, mean tumor size was 3.5 ± 1.7 cm in p16 positive SCCs, which was significantly larger compared to p16 negative tumors with a mean tumor size of 1.9 ± 1.2 cm ($p=0.005$; Fig. 2b).

Treatment and neck dissection

Surgical tumor resection alone was done in 68.1% of cases ($n=32$), while 21.3% underwent multimodal treatment regimes combining surgery with radiotherapy (RT) and/or chemotherapy ($n=10$). Radical tumor resection (R0) was achieved in 38 out of 42 patients (90.5%). The remaining five patients were treated with primary radiochemotherapy (RChT). Three patients with T4a nasoethmoidal SCCs disclaimed extensive surgery with exenteration and free-flap reconstruction, while one patient with T4b SCCs (infiltration of skull base) and one patient with distant metastases were no candidates for curative surgery. Unilateral and bilateral ND was performed in 4 (8.5%) and 11 patients (23.4%), respectively. Positive lymph nodes were detected in 4 of these 15 neck-dissected patients (26.7%). Subsequently, elective ND was performed in 11 out of 41 patients (26.8%).

Survival analysis

Mean and median follow-up was 36.9 and 33.7 months (range 0.1–227.2 months), respectively. Of the 47 patients, 14 (29.8%) experienced tumor recurrence, including 8 local (17.0%), 5 regional (10.6%) and 1 distant (2.1%) recurrence. We performed Kaplan–Meier survival analyses to determine if DFS and DSS were influenced by T-classification (T1–T2 vs. T3–T4), N-classification (N neg. vs. N pos.), tumor stage (stage I–II vs. III–IV), anatomic subsite (nasal septum vs. other), p16 status (pos. vs. neg.) and elective ND (yes vs. no).

DFS was not significantly affected by one of the tested variables (Table 3). Nevertheless, it is noteworthy to mention that none of those patients who underwent elective ND experienced regional or distant tumor recurrence. In particular, 5-year regional and distant DFS was 100% in patients who underwent elective ND compared to 68% in those who did not, but this difference failed to reach statistical significance ($p=0.075$).

Moreover, patients with positive neck nodes (N pos.), stage III–IV nasoethmoidal SCCs and tumors originating from nasal septum showed significantly worse DSS ($p<0.001$; $p=0.006$ and $p=0.016$; respectively; Fig. 3). Conversely, T-classification, p16 status and elective ND

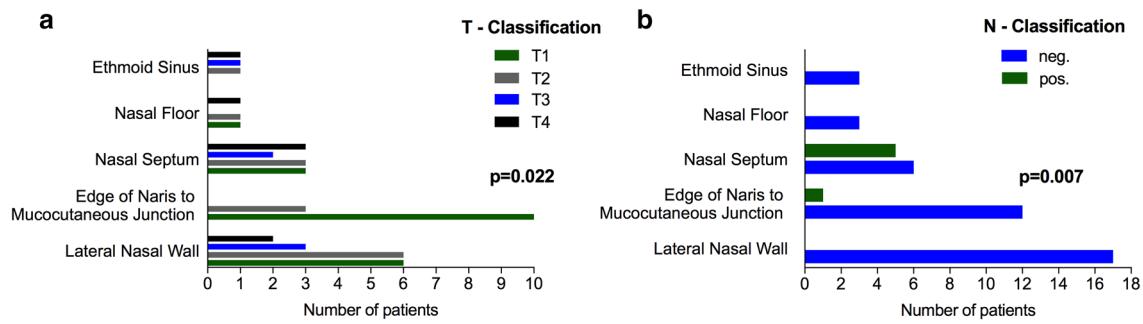


Fig. 1 Influence of anatomic subsite on T- and N-classification. T-classification significantly correlates with tumor origin ($p=0.022$). T4a ($n=6$) and T4b ($n=1$) tumors have been summarized as T4 tumors (a). Furthermore, 5 out of 11 patients with carcinomas of

the nasal septum presented with positive neck nodes, while positive lymph nodes were rare or absent in carcinomas of other anatomic subsites ($p=0.007$; b)

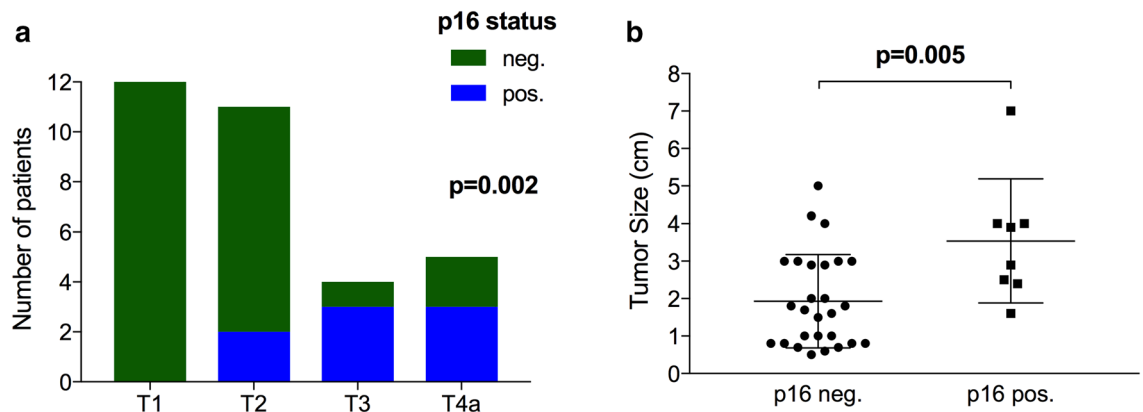


Fig. 2 Tumor classification and tumor size correlates with p16 status. Positive p16 expression was missing in T1 tumors, but was found in 75.0% and 60.0% of T3 and T4a carcinomas ($p=0.002$; a). Moreover,

mean tumor size was significantly higher in p16 positive compared to negative tumors ($p=0.005$; b)

did not significantly influence DSS ($p=0.420$; $p=0.607$ and $p=0.269$) (Table 3).

Prognostic factors

Finally, we performed Cox-regression analyses to assess the prognostic power of the abovementioned clinical variables on DFS and DSS. While none of the tested variables significantly impacted DFS, positive neck nodes (HR 7.87; $p=0.001$), advanced tumor stage (stage III–IV; HR 5.38; $p=0.014$) and tumor origin of nasal septum (HR 4.05; $p=0.025$) were significantly worse prognostic factors for DSS at univariable analysis (Table 4).

Discussion

Former studies demonstrated that tumor origin of sinonasal cancers corresponds to clinical stage and outcome [1, 2]. Accordingly, tumors originating of the maxillary sinus are typically associated with higher T-classification and worse prognosis compared to tumors of the nasal cavity. Herein we investigated the importance and impact of anatomical subsites of nasoethmoidal SCCs on clinical outcome.

Within our cohort, SCCs mainly originated from lateral nasal wall followed by tumors of the edge of naris to mucocutaneous junction and nasal septum. Initial nodal involvement was found in 12.8% of our cases, which was similar to previous publications reporting on positive neck nodes in 6.3–14.2% up to 24% of cases [2, 9, 17, 18].

Table 3 Kaplan–Meier survival analyses

Characteristics	Nr.	Disease free survival (DFS)				Disease specific survival (DSS)			
		1 year	3 years	5 years	<i>p</i>	1 year	3 years	5 years	<i>p</i>
T-classification									
T1–T2	35	73.8	65.1	65.1		96.4	79.4	70.0	
T3–T4	12	57.1	57.1	57.1	0.381	90.0	80.0	53.3	0.420
N-classification									
N neg	41	70.0	62.6	62.6		100.0	89.3	76.5	
N pos	6	66.7	66.7	66.7	0.848	66.7	33.3	16.7	<0.001
Tumor stage									
Stage I–II	30	73.3	63.5	63.5		100.0	94.4	82.6	
Stage III–IV	17	63.5	63.5	63.5	0.628	87.1	60.3	43.0	0.006
Anatomic subsite									
Nasal septum	11	60.0	60.0	60.0		90.0	35.0	35.0	
Other ^a	36	72.3	64.0	64.0	0.536	96.6	88.7	75.4	0.016
p16 status									
pos	8	50.0	25.0	25.0		100.0	100.0	66.7	
neg	27	71.0	65.5	65.5	0.069	90.9	75.1	69.8	0.607
Elective ND^b									
Yes	11	100.0	100.0	100.0		100.0	90.0	90.0	
No	30	84.2	68.0	68.0	0.075	100.0	89.2	68.6	0.269

Nr. Number of patients, *p* *p* value

^aOther: tumors originating from other anatomic subsites than nasal septum

^bThe impact of elective neck dissection (ND) was only evaluated in NO diseases (*n*=41) for regional and distant DFS and DSS

We could show for the first time that anatomical subsite has significant impact on clinical outcome of SCCs of the nasal cavity and ethmoidal sinuses. Particularly, septal carcinomas showed significantly higher rates of lymph node metastases compared to tumors that originated from other anatomic regions of the nasoethmoidal complex (45.5% vs. 2.8%). Patients with positive neck nodes (N pos.) had a seven- to eightfold higher risk to die from nasoethmoidal carcinoma compared to neck node-negative (N neg.) patients. This is in line to former studies demonstrating that nodal involvement represents a significantly worse prognostic factor that cut patients' overall survival almost to a half compared to node-negative patients [10, 19].

SCCs of the nasal septum were already described as aggressive and often undertreated tumors with high initial nodal involvement rates (6–24%) and early regional neck recurrences in up to 44% of cases, within the first 2 years after initial therapy [7, 18]. To date, the reasons for this aggressive tumor behavior are unclear, but early and frequent lymph node metastatic spread may be linked to the very close and rich lymph capillary network located in particular at the floor of the nose and upper lip [20].

Moreover, anatomic subsite significantly impacts T-stage. Tumors of the anterior nasal cavity, including the lateral nasal wall or edge of naris to mucocutaneous junction, typically cause early symptoms that foster diagnosis and

treatment. Subsequently, 100% of tumors of the edge of naris to mucocutaneous junction and 70.6% of tumors of the lateral nasal wall presented with T1 and T2 carcinomas, while 45.5% of septal carcinomas and 66.6% of tumors of the ethmoid sinus were detected as T3 and T4 tumors, respectively.

A recently published SEER (Surveillance, Epidemiology and End Results) analysis evaluated the risk of lymph node metastasis in 1283 patients with sinonasal SCCs [2]. They found out that T4 carcinomas of the nasal cavity and tumor size larger than 2 cm were associated with significantly higher rates of positive lymph nodes, and that lymph nodes at neck levels I and II were most commonly affected [2]. Herein, T4 tumors and larger tumor size were not associated with significantly higher rates of nodal involvement.

Recently, the benefit of elective treatment of N0 disease with radiotherapy or ND has been discussed. In the meta-analysis of Scurry et al., reviewing 23 studies, the risk for regional recurrence was 18.1%, and therefore, they favor elective regional treatment [11]. Conversely, other authors recommend elective treatment only for T4 tumors [10]. However, according to Ahn et al., elective nodal treatment could lead to a five- to sixfold decrease of nodal recurrence in sinonasal carcinomas [2]. In our cohort, elective ND was performed in 11 out of 41 patients (26.8%). Notably, none of these elective neck-dissected patients developed regional or

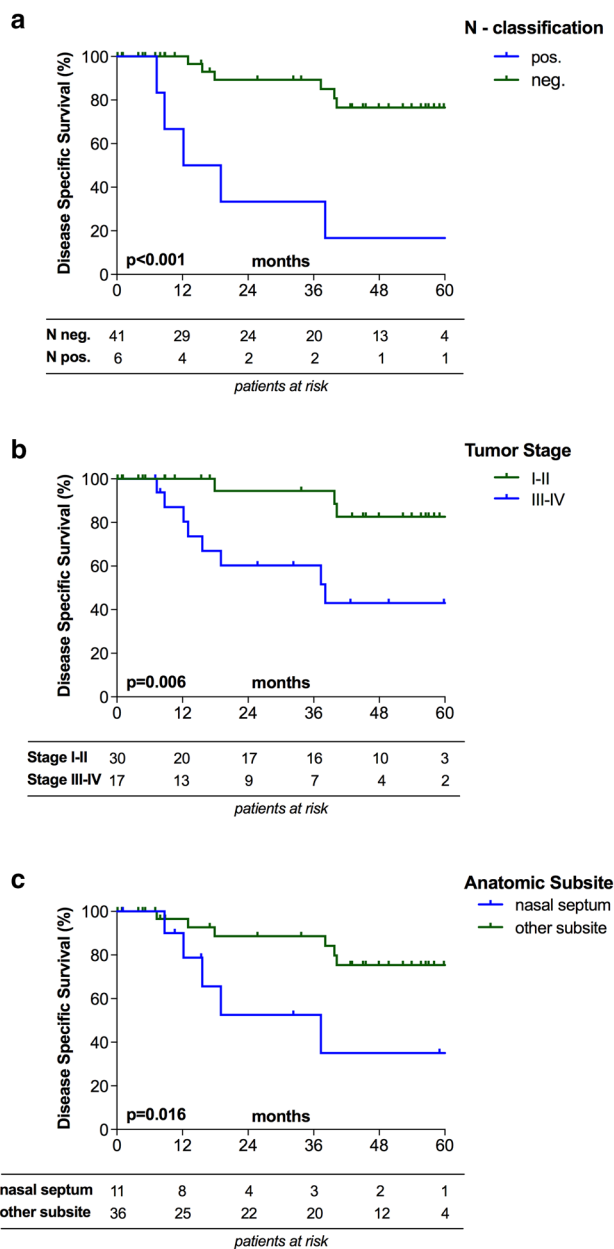


Fig. 3 Survival analyses. Positive neck nodes (N pos.), advanced tumor stage (stage III–IV) and tumor origin of nasal septum were associated with significantly worse disease specific survival (**a**, **b**, **c**)

distant recurrence compared to five regional and one distant recurrence in those patients who were not neck dissected. Accordingly, 5-year regional and distant DFS was 100% in patients who underwent elective ND compared to 68% those who did not. Despite this strong trend towards improved regional and distant DFS in patients with nasoethmoidal SCCs and elective ND, this difference did not reach statistical significance, and therefore further prospective studies with larger patient numbers are necessary.

Table 4 Univariable Cox—regression analysis

	Univariable analysis		
	HR	p value	95% CI
Disease free survival			
T-classification (T3–T4 vs. T1–T2)	1.62	0.386	0.54–4.85
N-classification (N pos. vs. N neg.)	1.16	0.849	0.26–5.18
Tumor stage (III–IV vs. I–II)	1.30	0.629	0.45–3.78
Anatomic subsite (septum vs. other ^a)	1.46	0.538	0.45–4.61
p16 status (pos. vs. neg.)	2.79	0.081	0.88–8.85
Elective ND (no vs. yes) ^b	45.9	0.319	0.03–100.0
Disease specific survival			
T-classification (T3–T4 vs. T1–T2)	1.65	0.425	0.48–5.68
N-classification (N pos. vs. N neg.)	7.87	0.001	2.35–26.3
Tumor stage (III–IV vs. I–II)	5.38	0.014	1.41–20.4
Anatomic subsite (septum vs. other ^a)	4.05	0.025	1.20–13.7
p16 status (pos. vs. neg.)	0.58	0.628	0.23–4.81
Elective ND (no vs. yes) ^b	3.15	0.295	0.37–27.0

HR Hazard ration, 95% CI 95% confidence interval

^aOther: tumors originating from other anatomic subsites than nasal septum, including lateral nasal wall, nasal floor, edge of naris to mucocutaneous junction and ethmoid sinuses

^bElective neck dissection (ND) was only done in patients with cN0 disease. Therefore regional and distant disease free survival and disease specific survival was only calculated in a subset of 41 patients, while the other variables were tested for the whole cohort of 47 patients

With regards to HPV infection, it has already been shown that HPV infection has a pivotal role for development and prognosis of SCCs of the head and neck. HPV-related oropharyngeal SCCs (OPSCC) represent a different tumor entity compared to HPV-negative OPSCCs. HPV-positive tumors are characterized by advanced clinical stages with smaller primary tumors but higher rates of positive neck nodes. Despite that HPV-positive OPSCCs show significantly better response rates to RT and RChT, better long-time outcome and better loco-regional control. Hence, HPV infection is considered as positive prognostic factor for OPSCC [21–23]. So far, only few data exist regarding the impact of HPV positivity in nasal SCCs. HPV positivity was reported in 10 up to 62% of carcinomas [3, 12] and former works demonstrated that HPV positivity was a favorable prognostic factor for nasal SCCs [12, 13]. Chowdhury et al. showed that median overall survival was 54 months in HPV positive compared to 12 months in HPV negative sinonasal SCCs [12]. Similar to OPSCC, we used p16 staining as surrogate marker for HPV infection. In our cohort, p16 positivity was associated with significantly higher T-stage and significantly higher tumor sizes, which is in contrast to the literature. To the best of our knowledge, this is the first time that p16 positivity was linked to higher T-classification in SCCs of the nasal cavity and ethmoidal sinuses. Conversely to

the literature, p16 positivity was no favorable prognostic factor for outcome in our cohort [12, 13].

There are some limitations of our study. The first limitation of our study is the small study population, which is caused by the rarity of nasoethmoidal SCCs. The annual incidence of sinonasal carcinomas is 5.6 cases per million [1]. Subsequently, our study group of 47 patients corresponds to 8.4 million individuals, which is representative for the Austrian population of 8.5 million people. Furthermore, the retrospective study design carries the inherent risk of information bias. Finally, due to unspecific and partially overlapping anatomic boundaries and definitions in nasal cavity, it is sometimes difficult to clearly allocate SCCs to distinct anatomic subsites. As already raised by Becker et al., unselected analysis of carcinomas of the nasal cavity, paranasal sinuses and nasal vestibule, without differentiation according to anatomic subsites, cause inhomogeneous results, which may lead to wrong conclusions [3]. Therefore, all patients with uncertain or incomplete data regarding tumor subsite were excluded from analysis a priori to obtain a homogenous patient cohort.

Conclusion

Tumor behavior and outcome is strongly influenced and determined by anatomic subsite. Particularly, septal SCCs represented highly aggressive malignancies with higher rates of nodal involvement and subsequently worse outcome. Consequently, high-risk patients, including septal SCCs, may benefit from elective ND or more aggressive treatment regimens. Because we could show that elective ND was associated with better but not significantly different outcome, further studies with higher patient numbers are needed.

Acknowledgements Open access funding provided by Medical University of Vienna. This study was supported and funded by the Department of Otorhinolaryngology, Head and Neck Surgery, Medical University Vienna. We thank Barbara Neudert, Clinical Institute of Pathology, Medical University Vienna, for the help with immunohistochemical stainings.

Compliance with ethical standards

Conflict of interest The authors have no funding, financial relationships or conflicts of interest to disclose.

Open Access This article is distributed under the terms of the Creative Commons Attribution 4.0 International License (<http://creativecommons.org/licenses/by/4.0/>), which permits unrestricted use, distribution, and reproduction in any medium, provided you give appropriate credit to the original author(s) and the source, provide a link to the Creative Commons license, and indicate if changes were made.

References

1. Turner JH, Reh DD (2012) Incidence and survival in patients with sinonasal cancer: a historical analysis of population-based data. *Head Neck* 34:877–885
2. Ahn PH, Mitra N, Alonso-Basanta M et al (2016) Risk of lymph node metastasis and recommendations for elective nodal treatment in squamous cell carcinoma of the nasal cavity and maxillary sinus: a SEER analysis. *Acta Oncol* 55:1107–1114
3. Becker C, Kayser G, Pfeiffer J (2016) Squamous cell cancer of the nasal cavity: new insights and implications for diagnosis and treatment. *Head Neck* 38:2112–2117
4. Katz TS, Mendenhall WM, Morris CG, Amdur RJ, Hinerman RW, Villaret DB (2002) Malignant tumors of the nasal cavity and paranasal sinuses. *Head Neck* 24:821–829
5. Lund VJ, Stammberger H, Nicolai P et al (2010) European position paper on endoscopic management of tumours of the nose, paranasal sinuses and skull base. *Rhinol Suppl* 22:1–143
6. Fornelli RA, Fedok FG, Wilson EP, Rodman SM (2000) Squamous cell carcinoma of the anterior nasal cavity: a dual institution review. *Otolaryngol Head Neck Surg* 123:207–210
7. LeLievre WC, Bailey BJ, Griffiths C (1984) Carcinoma of the nasal septum. *Arch Otolaryngol* 110:748–751
8. Dutta R, Dubal PM, Svider PF, Liu JK, Baredes S, Eloy JA (2015) Sinonasal malignancies: a population-based analysis of site-specific incidence and survival. *Laryngoscope* 125:2491–2497
9. Allen MW, Schwartz DL, Rana V et al (2008) Long-term radiotherapy outcomes for nasal cavity and septal cancers. *Int J Radiat Oncol Biol Phys* 71:401–406
10. Unsal AA, Dubal PM, Patel TD et al (2016) Squamous cell carcinoma of the nasal cavity: a population-based analysis. *Laryngoscope* 126:560–565
11. Scurry WC, Goldenberg D, Chee MY, Lengerich EJ, Liu Y, Fedok FG (2007) Regional recurrence of squamous cell carcinoma of the nasal cavity. A systematic review and meta-analysis. *Arch Otolaryngol Head Neck Surg* 133:796–800
12. Chowdhury N, Alvi S, Kimura K et al (2017) Outcomes of HPV-related nasal squamous cell carcinoma. *Laryngoscope* 127:1600–1603
13. Alos L, Moyano S, Nadal A et al (2009) Human papillomaviruses are identified in a subgroup of sinonasal squamous cell carcinomas with favorable outcome. *Cancer* 115:2701–2709
14. Amin MB, Edge SB, Greene FL et al (2017) *AJCC Cancer staging manual*, 8th edn. Springer, New York, pp 137–147
15. Chung CH, Zhang Q, Kong CS et al (2014) p16 protein expression and human papillomavirus status as prognostic biomarkers of non-opharyngeal head and neck squamous cell carcinoma. *J Clin Oncol* 32:3930–3938
16. Enzenhofer E, Parzefall T, Haymerle G et al (2016) Impact of sonic hedgehog pathway expression on outcome in HPV negative head and neck carcinoma patients after surgery and adjuvant radiotherapy. *PLoS One* 11:e0167665
17. DiLeo MD, Miller RH, Rice JC, Butcher RB (1996) Nasal septal squamous cell carcinoma: a chart review and meta-analysis. *Laryngoscope* 106:218–222
18. Beatty CW, Pearson BW, Kern EB (1982) Carcinoma of the nasal septum: experience with 85 cases. *Otolaryngol Head Neck Surg* 90:90–94
19. Jakobsen MH, Larsen SK, Kirkegaard J, Hansen HS (1997) Cancer of the nasal cavity and paranasal sinuses. Prognosis and outcome of treatment. *Acta Oncol* 36:27–31
20. Pan WR, Suami H, Corlett RJ, Ashton MW (2009) Lymphatic drainage of the nasal fossae and nasopharynx: preliminary anatomical and radiological study with clinical implications. *Head Neck* 31:52–57

21. Klussmann JP, Weissenborn SJ, Wieland U et al (2003) Human papillomavirus-positive tonsillar carcinomas: a different tumor entity? *Med Microbiol Immunol* 192:129–132
22. Marur S, D'Souza G, Westra WH, Forastiere AA (2010) HPV-associated head and neck cancer: a virus-related cancer epidemic. *Lancet Oncol* 11:781–789
23. Ang KK, Harris J, Wheeler R et al (2010) Human papillomavirus and survival of patients with oropharyngeal cancer. *N Engl J Med* 363:24–35