



Species Conservation Profile

An endangered West African rattan palm: *Eremospatha dransfieldii*

Ariane Cosiaux^{‡,§}, Lauren M. Gardiner^l, Doudjo N. Ouattara^{¶,#}, Fred W. Stauffer[□],
Bonaventure Sonké[§], Thomas L.P. Couvreur[«]

‡ Institut de Recherche pour le Développement (IRD), Yaoundé, Cameroon

§ Plant Systematic and Ecology Laboratory, Higher Teacher's Training College, University of Yaoundé I, Yaoundé, Cameroon

l Royal Botanic Gardens, Kew, London, United Kingdom

¶ Université de Genève, Genève, Switzerland

Conservatoire et Jardin botaniques de la Ville de Genève, Chambésy, Switzerland

□ Conservatoire et jardin botaniques, Chambésy, Switzerland

« Institut de Recherche pour le Développement (IRD), Montpellier, France

Corresponding author:

Academic editor: Pavel Stoev

Received: 13 Nov 2016 | Accepted: 08 Jan 2017 | Published: 13 Jan 2017

Citation: Cosiaux A, Gardiner L, Ouattara D, Stauffer F, Sonké B, Couvreur T (2017) An endangered West African rattan palm: *Eremospatha dransfieldii*. Biodiversity Data Journal 5: e11176.

<https://doi.org/10.3897/BDJ.5.e11176>

Abstract

Eremospatha dransfieldii is a robust rattan palm, climbing up to 40 m in length. It is only known to occur in the south-western region of Ghana, south-eastern part of Côte d'Ivoire and in Sierra Leone. The species' Area of Occupancy (AOO) is restricted to just 40 km². This species is confined to moist-evergreen forests with high rainfall. It is known to be facing habitat loss and over-harvesting of its stems. We assess *Eremospatha dransfieldii* as Endangered based on criterion B2ab(iii), according to the IUCN Red List Categories and Criteria (ver 3.1).

Keywords

Endangered species, habitat loss, over-harvesting, rattan palm, West Africa, Ghana, Côte d'Ivoire, Sierra Leone

Reviewers

Steven Bachman and William J. Baker

Eremospatha dransfieldii Sunderl.

Species information

Common names

Rattan (English), Rotin (French); Sierra Leone: balu (Kono); mbalu (def. -ui) (Mende); Côte d'Ivoire: kpè-pun (Attié); tami (Dyula); kou gnain (Gouro); niböigain (Wè); Ghana: mfia (Twi) (Sunderland et al. 2005).

Taxonomy

Kingdom	Phylum	Class	Order	Family
PLANTAE	TRACHEOPHYTA	LILIOPSIDA	ARECALES	PALMAE

Taxonomic notes

Eremospatha dransfieldii (Sunderland 2003) has been shown to be a sister species to *E. cabrae* (De. Wild. & Th. Dur.) De Wild. from central Africa based on phylogenetic analyses of molecular sequence data (Faye et al. 2014, Faye et al. 2016).

Region for assessment:

- Western Africa
- Global

Figure(s) or Photo(s):

Figs 1, 2

Geographic range

Biogeographic realm:

- Afrotropical



Figure 1.

Eremospatha dransfieldii in the "Forêt Classée de N'zodji", Côte d'Ivoire [Photo Credit: Doudjo Ouattara, 2016]



Figure 2.

Dr. Fred Stauffer photographing *Eremospatha dransfieldii* in the "Forêt classée de N'zodji", Côte d'Ivoire [Photo Credit: Doudjo Ouattara, 2016]

Countries:

- Sierra Leone
- Côte d'Ivoire
- Ghana

Map of records (image):

Fig. 3

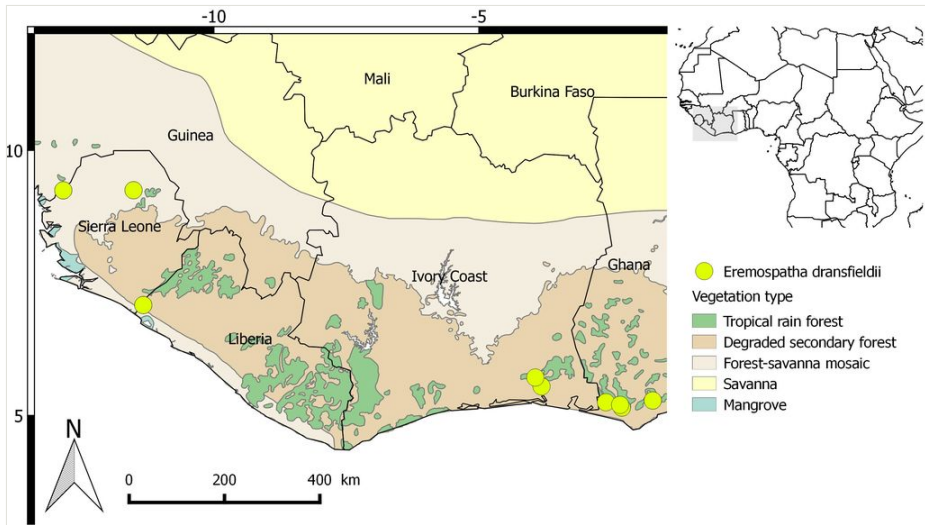


Figure 3.

Distribution map of *Eremospatha dransfieldii*.

Basis of EOO and AOO: Observed

Basis (narrative)

The Extent of Occurrence (EOO) was calculated using 20 georeferenced herbarium specimens found in the RAINBIO database (Dauby et al. 2016). Within the EOO, the Area of Occupancy (AOO) was calculated as the sum of occupied cells after superimposing a grid with cells of 2x2 km. Both parameters were estimated using the web service [GeoCAT](#) (Bachman et al. 2011).

Min Elevation/Depth (m): 100

Max Elevation/Depth (m): 200

Range description

Eremospatha dransfieldii is only found in the south-western region of Ghana and south-eastern part of Côte d'Ivoire, with two specimens collected from Sierra Leone. It is reported from 100 to 200 meters above sea level (a.s.l.). In Ghana, the species is restricted to forest reserves and conservation areas of the Western Region. In Côte d'Ivoire it has only been recently discovered, in the "Forêt classée N'zodji" (S. da Giau, D. Ouattara and F. Stauffer pers. comm. 2016). The EOO of the species is large (251 334 km²). Within the EOO, the AOO is restricted to only 40 km². Rattans are generally under-collected by researchers because they are spiny climbers and hard to collect so the low AOO may be an artefact linked to this. However, this rattan palm appears to be confined to forests with high rainfall (Sunderland 2007, Sunderland 2012), so the low AOO is likely to be a reflection of the species' true distribution.

Extent of occurrence

EOO (km²): 251334

Trend: Unknown

Justification for trend

There is no current available data about the trend of the Extent Of Occurrence.

Causes ceased?: Unknown

Causes understood?: Unknown

Causes reversible?: Unknown

Extreme fluctuations?: Unknown

Area of occupancy

AOO (km²): 40

Trend: Unknown

Justification for trend

There is no current available data about the trend of the Area Of Occupancy.

Causes ceased?: Unknown

Causes understood?: Unknown

Causes reversible?: Unknown

Extreme fluctuations?: Unknown

Locations

Trend: Unknown

Population

Trend: Decline (inferred)

Basis for decline:

- (c) a decline in area of occupancy, extent of occurrence and/or quality of habitat
- (d) actual or potential levels of exploitation

Causes ceased?: No

Causes understood?: Yes

Causes reversible?: Yes

Extreme fluctuations?: Unknown

Population Information (Narrative)

The number of mature individuals is not known. Although the species is poorly known, it is likely to be very rare due to the limited amount of forest habitat remaining across its range. The known sub-populations are isolated by large distances and occur in small patches of forest surrounded by a matrix of unsuitable habitat. Recent surveys suggest there are only a small number of individuals at some sites e.g. Forêt Classée de N'zodji, Côte d'Ivoire, or even no individuals at all remaining in some places e.g. Ankasa Natural Reserve, Ghana (F. Stauffer, pers. comm. 2016). Due to the fragmentation of the forest habitat it is likely that most of the individuals of this species persist in isolated patches with low viability and therefore it should be considered severely fragmented. Moreover, the sub-populations are known to be facing habitat loss and over-harvesting, as a result we can infer that the population is currently likely to be decreasing.

Habitat

System: Terrestrial

Habitat specialist: Unknown

Habitat (narrative)

This species only occurs in moist evergreen forests with rainfall higher than 2000 mm/year, where it prefers to grow in tree-fall gaps and forest margins (Sunderland 2012, Sunderland 2007).

Trend in extent, area or quality?: Decline (observed)

Justification for trend

This rattan does not occur in agro-ecosystems and it is highly threatened by habitat loss in Ghana and Côte d'Ivoire (S. da Giau, D. Ouattara and F. Stauffer pers. comm. 2016) - this rattan is subject to a continuing decline of the extent of its habitat.

Habitat importance: Major Importance

Habitats:

- 1. Forest

Ecology

Dependency of single sp?: No

Ecology and traits (narrative)

Eremospatha dransfieldii is a robust rattan palm, with multiple stems and climbing to 40 m in length (Sunderland et al. 2005, Sunderland 2012, Sunderland 2007, Sunderland 2003).

Threats

Threat type: Ongoing

Threats:

- 2. Agriculture & aquaculture
- 5. Biological resource use

Justification for threats

The major threats to this species are habitat loss due to forest conversion to agriculture, and over-harvesting of the stems for the rattan products (D. Ouattara and F. Stauffer, pers. comm. 2016). In Côte d'Ivoire, this species is highly threatened; the only forest where the species has been observed is currently being cut to open up new fields. The stems of this rattan are over-harvested in the area, which could soon lead to the disappearance of this species in the country. The same threats are observed in Ghana. Data are currently absent

regarding the threats to this species in Sierra Leone, but we infer that the species is likely to be threatened by habitat loss there too.

Conservation

Conservation actions

Conservation action type: In Place

Conservation actions:

- 1. Land/water protection

Justification for conservation actions

This rattan palm appears to be highly threatened by habitat loss and over-harvesting and it is not well represented inside protected areas.

Based on known herbarium records, this species presents a large geographic distribution (ie. its EOO is large), but its AOO is limited to just 40 km². Although this may in part be a result of botanical under-collecting, the specialized habitat of this species suggests that it only grows in moist evergreen forests with high rainfall and that it has a genuinely restricted distribution. Based on this, and the ongoing habitat loss, fragmented distribution, and overharvesting of the species, *Eremospatha dransfieldii* is assessed as Endangered based on criterion B2ab(iii), according to the IUCN Red List Categories and Criteria (ver 3.1). Indeed, the assessment is based on B2 (small AOO), a - severe fragmentation, b - continuing decline in suitable habitat area.

Conservation measures are urgently needed to protect the habitat of this species and to control the unsustainable harvest of the stems. A promising solution might be the sustainable cultivation of rattans (Sunderland and Nkefor 2002) to avoid the exploitation of wild populations. The only place where the species is represented in a protected area is in the Ankasa Conservation Area in Ghana.

Other

Use and trade

Use type: National

Use and trade:

- 9. Construction or structural materials
- 11. Other household goods

Justification for use and trade

This rattan is traded in local markets, in Ghana and Côte d'Ivoire. The species is mainly used for furniture frames and coarse basketry (Sunderland 2007). In Ghana, most people are not able to differentiate *Eremospatha dransfieldii* from *Eremospatha macrocarpa* which are used for the same purposes. The canes are usually longitudinally split into several ribbons, which are used to attach the frames of furniture, used as ropes for thatching, for making baskets and sieves and to make traps (Ouattara et al. 2015). As with most African rattan species, there is inadequate information on the international trade, but it is likely to be negligible, although this rattan may have been among the species exported from Ghana to the United Kingdom in the period between the two World Wars (PROTA 2015, [http://uses.plantnet-project.org/fr/Eremospatha_dransfieldii_\(PROTA\)](http://uses.plantnet-project.org/fr/Eremospatha_dransfieldii_(PROTA))).

Acknowledgements

We are grateful to the office of the Chair of IUCN Species Survival Commission (SSC) which made available valuable resources via the Environment Agency of Abu Dhabi (United Arab Emirates).

References

- Bachman S, Moat J, Hill AW, de Torre J, Scott B (2011) Supporting Red List threat assessments with GeoCAT: geospatial conservation assessment tool. *ZooKeys* 150: 117-126. <https://doi.org/10.3897/zookeys.150.2109>
- Dauby G, Zaiss R, Blach-Overgaard A, Catarino L, Damen T, Deblauwe V, Dessin S, Dransfield J, Droissart V, Duarte MC, Engledow H, Fadeur G, Figueira R, Gereau RE, Hardy OJ, Harris D, de Heij J, Janssens SB, Klomberg Y, Ley AC, Mackinder BA, Meerts P, van de Poel J, Sonké B, Sosef MSM, Stévar T, Stoffelen P, Svenning J, Sepulchre P, van der Burgt XM, Wieringa J, Couvreur TLP (2016) RAINBIO: a mega-database of tropical African vascular plants distributions. *PhytoKeys* 74: 1-18. <https://doi.org/10.3897/phytokeys.74.9723>
- Faye A, Pintaud JC, Baker WJ, Sonké B, Couvreur TLP (2014) A plastid phylogeny of the African rattans (Ancistrophyllinae, Arecaceae). *Systematic Botany* 39 (4): 1099-1107. <https://doi.org/10.1600/036364414x682634>
- Faye A, Pintaud J, Baker WJ, Vigouroux Y, Sonke B, Couvreur TLP (2016) Phylogenetics and diversification history of African rattans (Calamoideae, Ancistrophyllinae). *Botanical Journal of the Linnean Society* 182 (2): 256-271. <https://doi.org/10.1111/boj.12454>
- Ouattara D, Ekpe P, Bakayoko A, Stauffer FW (2015) Ethnobotany and Conservation of Palms from Ghana. *Palms* 59 (2): 85-103.
- Sunderland TCH (2003) Two new species of rattan (Palmae: Calamoideae) from the forests of West and Central Africa. *Kew Bulletin* 58: 987-990. <https://doi.org/10.2307/4111214>

- Sunderland TCH (2007) Field guide to the rattans of Africa. Kew Publishing, Royal Botanic Garden, Kew, UK, 66 pp.
- Sunderland TCH (2012) A taxonomic revision of the rattans of Africa (Arecaceae: Calamoideae). *Phytotaxa* 51: 1-76. <https://doi.org/10.11646/phytotaxa.51.1.1>
- Sunderland TCH, Nkefor J (2002) Technology transfer between Asia and Africa: rattan cultivation and processing. In: Sunderland TCH, Profizi JP (Eds) New research on African rattans. INBAR, Beijing, 79-90 pp.
- Sunderland TCH, Beligné V, Bonnehin L, Ebanyenle E, Oteng-Amoako A (2005) Taxonomy, population dynamics and utilisation of the rattan palms of Upper Guinea. Forest climbing plants of West Africa: diversity, ecology and management. CABI Publishing, 147-167 pp. <https://doi.org/10.13140/2.1.3538.6561>