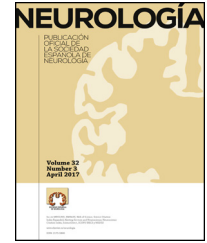




Since January 2020 Elsevier has created a COVID-19 resource centre with free information in English and Mandarin on the novel coronavirus COVID-19. The COVID-19 resource centre is hosted on Elsevier Connect, the company's public news and information website.

Elsevier hereby grants permission to make all its COVID-19-related research that is available on the COVID-19 resource centre - including this research content - immediately available in PubMed Central and other publicly funded repositories, such as the WHO COVID database with rights for unrestricted research re-use and analyses in any form or by any means with acknowledgement of the original source. These permissions are granted for free by Elsevier for as long as the COVID-19 resource centre remains active.



ERRATUM

Erratum to “Pulse immunosuppressive therapy for multiple sclerosis during the SARS-CoV-2 lockdown de-escalation plan: Safety algorithm” [Neurología. 2020;35(6):357–362][☆]



Fe de errores a “Tratamiento inmunosupresor en pulsos en esclerosis múltiple durante el desescalado de la epidemia por SARS-CoV-2. Algoritmo de seguridad” [Neurología. 2020;35(6):357–362]

G. Valero-López^{a,b}, E. Carreón-Guarnizo^{a,b,c}, R. Hernández-Clares^{a,b,c},
F. Iniesta-Martínez^{b,c}, J. Jiménez-Veiga^{a,b,c}, A. Moreno-Docon^d, M.A. Iborra-Bendicho^d,
E. Aznar-Robles^{a,b}, M.F. Hellín-Gil^{a,b}, A. Morales-Ortiz^a, J.E. Meca-Lallana^{a,b,c,*}

^a Servicio de Neurología, Hospital Clínico Universitario Virgen de la Arrixaca, IMIB-Arrixaca, Murcia, Spain

^b CSUR Esclerosis Múltiple y Unidad de Neuroinmunología Clínica, Servicio de Neurología, Hospital Clínico Universitario Virgen de la Arrixaca, IMIB-Arrixaca, Murcia, Spain

^c Cátedra de Neuroinmunología Clínica y Esclerosis Múltiple, UCAM, Universidad Católica San Antonio, Murcia, Spain

^d Unidad de Virología, Servicio de Microbiología, Hospital Clínico Universitario Virgen de la Arrixaca, IMIB-Arrixaca, Murcia, Spain

The published version of this article did not present the full symptom checklist included in the “Clinical protocol” section (page 359). The corrected version is as follows:

- Fever
- Throat pain
- Persistent cough
- Diarrhoea
- Anosmia

Véase contenido relacionado en DOI:

<https://doi.org/10.1016/j.nrleng.2020.06.001>

[☆] Please cite this article as: Valero-López G, Carreón-Guarnizo E, Hernández-Clares R, Iniesta-Martínez F, Jiménez-Veiga J, Moreno-Docon A, et al. Fe de errores a “Tratamiento inmunosupresor en pulsos en esclerosis múltiple durante el desescalado de la epidemia por SARS-CoV-2. Algoritmo de seguridad” [Neurología. 2020;35(6):357–362]. Neurología. 2020;35:541.

* Corresponding author.

E-mail address: pmecal@gmail.com (J.E. Meca-Lallana).