

BMJ Open Goal-directed perfusion to reduce acute kidney injury after paediatric cardiac surgery (GDP-AKI_p): study protocol for a prospective randomised controlled trial

Yan Zhang , Xiujuan Zhou, Bo Wang, Lijuan Guo, Ronghua Zhou

To cite: Zhang Y, Zhou X, Wang B, *et al*. Goal-directed perfusion to reduce acute kidney injury after paediatric cardiac surgery (GDP-AKI_p): study protocol for a prospective randomised controlled trial. *BMJ Open* 2020;**10**:e039385. doi:10.1136/bmjopen-2020-039385

► Prepublication history and additional material for this paper are available online. To view these files, please visit the journal online (<http://dx.doi.org/10.1136/bmjopen-2020-039385>).

YZ and XZ contributed equally.

YZ and XZ are joint first authors.

Received 14 April 2020
Revised 27 October 2020
Accepted 29 October 2020



© Author(s) (or their employer(s)) 2020. Re-use permitted under CC BY-NC. No commercial re-use. See rights and permissions. Published by BMJ.

Anesthesiology, West China Hospital of Sichuan University, Chengdu, China

Correspondence to

Dr Ronghua Zhou;
wr.zhou@hotmail.com

ABSTRACT

Introduction Cardiac surgery-associated acute kidney injury (CS-AKI) occurs in up to 40%–60% of paediatric patients and increases postoperative morbidity and mortality. A goal-directed perfusion (GDP) strategy aimed at maintaining indexed oxygen delivery (DO_{2i}) above the critical threshold (reported to be 260–300 mL/min/m² in adults) during cardiopulmonary bypass (CPB), is effective in reducing the incidence of CS-AKI. However, no clear standards of paediatric critical DO_{2i} exist. Our prior prospective cohort study exploring the critical DO_{2i} threshold during paediatric CPB has found the nadir DO_{2i} <353 mL/min/m² was an independent risk predictor of CS-AKI. Based on this background, this trial is designed to further determine whether the implementation of the GDP initiative aimed at maintaining $DO_{2i} \geq 360$ mL/min/m² would reduce the rate of CS-AKI in paediatrics and improve clinical outcome.

Methods and analysis This is a prospective, single-centre, randomised controlled trial. In total, 166 paediatric patients undergoing cardiac surgery will be randomly allocated to the GDP group or control group. Patients in the GDP arm will be treated with a GDP strategy during CPB aimed to maintain $DO_{2i} \geq 360$ mL/min/m² (to ensure safely above the risk DO_{2i} threshold we found). The perfusion strategy for patients in the control arm will be factored on body surface area and temperature. The primary outcome is the rate of postoperative CS-AKI (it is defined according to paediatric Risk, Injury, Failure, Loss of renal function and End-stage renal disease criteria). The secondary end points include: (1) the other oxygen metabolism parameters during CPB; (2) major complication and all-cause mortality (in-hospital or within 30 days postoperatively); (3) short-term clinical outcomes (ie, time to extubation, mechanical ventilation time, hospital stay).

Ethics and dissemination The study has been approved by the Biomedical Research Ethics committee of West China Hospital of Sichuan University (approval number: 2019(863)). Results will be disseminated through peer-reviewed publications and conferences.

Trial registration number ChiCTR2000029232.

Strengths and limitations of this study

- This will be the first randomised controlled trial to explore the clinical effects of goal-directed perfusion (GDP) for postoperative cardiac surgery-associated acute kidney injury (CS-AKI) in paediatrics.
- This perfusion strategy is specifically tailored to the infants.
- We choose the target of 360 mL/min/m² as the indexed oxygen delivery (DO_{2i}) threshold which is safely above the critical DO_{2i} obtained from our prior prospective cohort study.
- A limitation of the study is the lack of a precise and quantifiable measures of diagnosing early CS-AKI.

INTRODUCTION

Infants or children undergoing open cardiac surgery are at high risk of developing cardiac surgery-associated acute kidney injury (CS-AKI), with the incidence of 40%–60%.^{1–3} Paediatric CS-AKI increases postoperative morbidity and mortality, which also adversely affects the long-term prognosis. CS-AKI has a complex pathophysiology with many risk factors,^{4,5} and therefore no single medication or therapy has been demonstrated to be effective for treatment or prevention.^{6,7} However, it has been established that the associated low oxygen delivery is one of the important predictors of CS-AKI.^{8–10} Therefore, in the absence of an intervention to prevent CS-AKI, a reasonable strategy to identify modifiable risk factors and to meet physical oxygen demand may reduce the risk of CS-AKI.

Oxygen delivery (DO_2) during CPB is calculated by multiplying the pump flow rate and the arterial oxygen content, which is more comprehensive in reflecting tissue oxygen supply than the independent parameters of arterial oxygen saturation (SaO_2), cardiac output and haemoglobin concentration.¹¹

So, indexed DO_2 (DO_{2i}) is one of the most important determinants of 'optimal perfusion' during CPB.¹¹ The minimal safe DO_{2i} during CPB, termed 'critical DO_{2i} ', is the point when the maximal oxygen extraction is reached, and the whole body oxygen consumption (VO_2) and tissue oxygenation begin to decrease, and anaerobic metabolism and lactic acidosis begin to develop.¹¹ In recent years, the concept of goal-directed perfusion (GDP) aimed at maintaining the nadir DO_{2i} on CPB above the critical value has been proved to be effective to reduce the incidence of CS-AKI.^{8–10} Therefore, nadir DO_{2i} is a stronger predictor of CS-AKI than nadir haemoglobin or perfusion flow rate alone.¹²

Several clinical studies have explored the 'critical DO_{2i} ' threshold in adult cardiac surgeries. Ranucci *et al*¹³ reported that DO_{2i} value $<260 \text{ mL}/\text{min}/\text{m}^2$ was associated with increased lactate formation. Subsequently, numerous retrospective and prospective observational studies have confirmed the association between nadir DO_{2i} on CPB and postoperative AKI, with the identification of a 'critical DO_{2i} ' in the range of $262\text{--}272 \text{ mL}/\text{min}/\text{m}^2$ for adult patients undergoing CPB.^{8–10} In 2018, a multicentre randomised controlled trial (RCT) showed that a GDP strategy, with maintenance of $\text{DO}_{2i} >280 \text{ mL}/\text{min}/\text{m}^2$, was effective in reducing Acute Kidney Injury Network (AKIN) stage I postoperative AKI.¹⁴ Moreover, in 2019, Mukaida *et al*¹⁵ has tested that the time-dose response of DO_{2i} during CPB was a better indicator than nadir DO_{2i} in evaluating AKI risk, and maintaining DO_{2i} level $>300 \text{ mL}/\text{min}/\text{m}^2$ may result in decreased risk for postoperative AKI. However, all the studies about the critical DO_{2i} thresholds on CPB and the relationship between the nadir DO_{2i} and CS-AKI are all limited to the adult population. The literature in paediatric patients is scarce and no evidence-based paediatric critical DO_{2i} threshold is universally accepted. Given that infants have a much higher metabolic rate and oxygen demand, consequently they require a much higher pump flow rate ($3.2 \text{ L}/\text{min}/\text{m}^2$ body surface area (BSA) vs $2.4 \text{ L}/\text{min}/\text{m}^2$ BSA) and haematocrit (HCT) than adults. So, the critical DO_{2i} in infants cannot be referred to the existing adults' standard, otherwise it will cause severe hypoperfusion and hypoxia.

Therefore, our research group has innovatively conducted a pilot prospective cohort study to explore the critical DO_{2i} threshold in paediatric cardiac patients, with the association of postoperative AKI (trial registration number: ChiCTR1900028683). The results showed that nadir DO_{2i} was significantly different between the non-AKI and AKI groups. And the nadir DO_{2i} on CPB less than the critical value threshold of $353 \text{ mL}/\text{min}/\text{m}^2$ was an independent risk predictor of CS-AKI in infants. However, further studies are needed to define the effects of GDP approach in paediatrics.

Based on this background, the current RCT of GDP strategy to reduce AKI after paediatric cardiac surgery (GDP-AKI_p) is designed to further study whether the GDP approach aimed at avoiding the nadir DO_{2i} less than

the critical threshold of $360 \text{ mL}/\text{min}/\text{m}^2$ will reduce the rate of postoperative AKI in paediatric patients undergoing mild hypothermic CPB, and improve the clinical outcome.

OBJECTIVE

To demonstrate that the implementation of the GDP initiative aimed at maintaining $\text{DO}_{2i} \geq 360 \text{ mL}/\text{min}/\text{m}^2$ compared with standard CPB flow rate management factored on BSA and temperature would reduce the rate of CS-AKI in paediatrics and improve clinical outcome, we will test the following hypothesis:

- ▶ The implementation of the GDP initiative would be associated with a reduced AKI incidence within 7 days of paediatric cardiac surgery compared with control patients.

METHODS/DESIGN

Study design

The GDP-AKI_p study is a single-centre, prospective, double-blinded, two-armed, RCT with a 1:1 allocation ratio, testing whether the GDP strategy will reduce the rate of CS-AKI and improve clinical outcome in paediatric patients. The protocol structure is written according to the Consolidated Standards of Reporting Trials 2010 Statement guidelines and follows the Standard Protocol Items: Recommendations for Interventional Trials (SPIRIT) Statement. The SPIRIT checklist can be found in online supplemental additional file 1. [Figure 1](#) is the trial flow chart. The schedule of enrolment, interventions and assessments follows the SPIRIT Statement ([figure 2](#)).

This trial will be undertaken in West China Hospital of Sichuan University, where >300 infant open-heart procedures with CPB are performed each year. Recruitment will be commenced in April 2020.

Participants

We plan to enrol 166 paediatric participants aged <3 years undergoing CPB for any elective cardiac surgical procedure via a median sternotomy.

Inclusion criteria

Participants must meet all the inclusion criteria:

1. aged ≤ 3 years;
2. undergoing elective cardiac surgery via a median sternotomy under CPB;
3. American Society of Anesthesiologists I–IV level;
4. there is a written informed consent.

Exclusion criteria

Patients who meet any of the following criteria will be excluded from participation:

1. chronic kidney disease stage 5 (receipt of kidney replacement therapy or estimated glomerular filtration rate (eGFR) $<15 \text{ mL}/\text{min}/1.73 \text{ m}^2$)¹⁶;
2. expected nadir CPB temperature $<32^\circ\text{C}$;
3. heart transplantation;
4. suffering perioperative cardiac arrest;

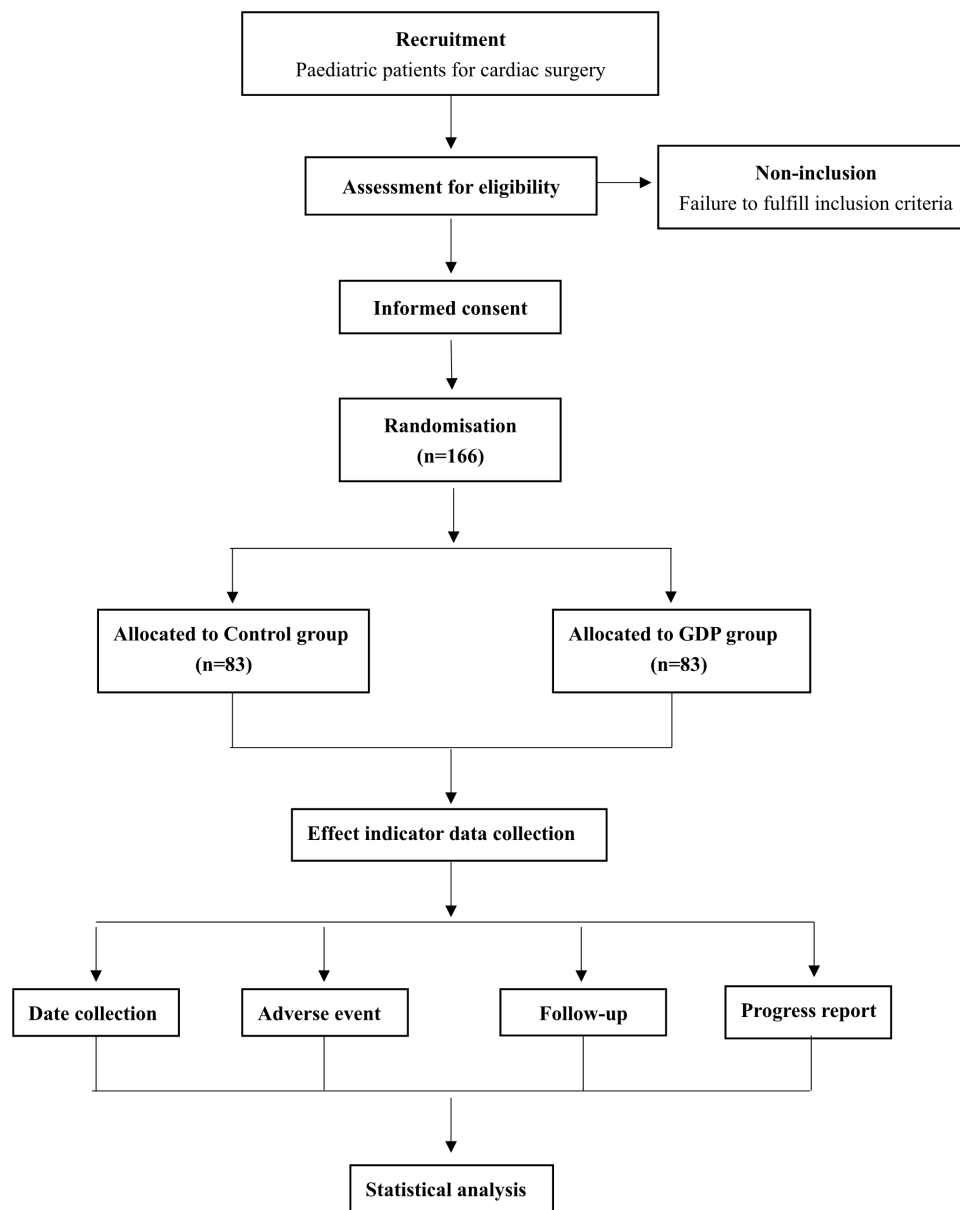


Figure 1 Flow chart. GDP, goal-directed perfusion.

5. aortic arch and other deep hypothermic circulatory arrest surgery;
6. preoperative treatment with extracorporeal life support;
7. postoperative treatment with extracorporeal life support or ventricular auxiliary device (VAD);
8. participating in other interventional studies;
9. premature infants and those with pre-existing brain or kidney abnormalities.

Randomisation/Blinding

Once informed consent has been received and the preoperative assessments completed, patients will be enrolled into the trial. In this study, a statistician in the study will use the IBM SPSS Statistics V.19.0 software to generate a table of random numbers. The ratio of test-to-control is 1:1 and the block size is 2. Patients will be randomly assigned to either GDP or control arms

according to enrolment sequence. A table of random numbers will be placed in sequentially labelled opaque envelopes. The distribution order will be kept by a research assistant who is not involved in recruitment, intervention, outcome evaluation or statistical analysis. After the subjects have met the study criteria, the research assistant will notify the appropriate perfusionist to intervene by telephone of the assignment (GDP group or control group).

The perfusionists will be aware of patients' group allocation because they will provide the trial intervention, but they will not be involved in either the postoperative treatment or the analysis. The patients, the surgeons, the anaesthesiologists, the paediatric intensive care unit (PICU) physicians, the data collectors and the data analysts are blinded to treatment allocation in the whole process. To ensure these people are blinded to the perfusion strategy,

TIMEPOINT	STUDY PERIOD							
	Day before surgery	Day of surgery	Before CPB	During CPB	After CPB	ICU	Ward	1 month after surgery
ENROLLMENT:								
Eligibility screen	X							
Informed consent	X							
Random allocation		X						
INTERVENTIONS:								
Goal-directed perfusion strategy				X				
Routine perfusion strategy				X				
ASSESSMENTS:								
Preoperative information	X							
Intraoperative information		X	X	X	X			
The incidence of CS-AKI						X	X	X
The body metabolism parameters				X		X		
Major complication and all-cause mortality						X	X	X
Short-term outcomes during hospitalisation						X	X	
Follow-up								X

Figure 2 Schedule of enrolment, interventions, assessments according to Standard Protocol Items: Recommendations for International Trials (SPIRIT). CPB, cardiopulmonary bypass; CS-AKI, cardiac surgery-associated acute kidney injury; ICU, intensive care unit.

the patient files typically the perfusion records will not be involved information related to the study arm.

Interventions

Patients who meet the enrolment criteria will be randomised 1:1 to either control or GDP group.

Patients in the control group will receive arterial pump flow based on BSA and temperature, with a target value of 2.8~3.2L/min/m². Ultrafiltration and transfusion of packed red blood cell (PRBC) during CPB will be triggered by the HCT value, according to local institutional standards.

Patients in the GDP group will receive a GDP strategy during CPB aimed to maintain DO_{2i} at ≥360mL/min/m². The main intervention will be based on adjustment of the arterial pump flow according to the HCT value so as to reach and maintain a DO_{2i} above the prespecified threshold. In the event of low HCT values and an inability to maintain the DO_{2i} above the threshold, transfusing PRBC or ultrafiltration could be considered.

With respect to the other perfusion details, the patients will be treated according to our hospital standards. The DO_{2i} levels of patients in both study arms during CPB are reported at 10 min intervals. For patients in the GDP group, the perfusionist will have a direct view of the GDP monitor data to achieve compliance with the GDP protocol. For patients in the control group, the DO_{2i}

value will be excluded from the record form to avoid any intervention based on values in the control group.

Study end points

The primary end point is the rate of AKI after cardiac surgery. AKI is defined according to paediatric Risk, Injury, Failure, Loss of renal function and End-stage renal disease (pRIFLE) classification at the risk or greater level as any increase in estimated creatinine clearance (eCrCl) >25% from baseline (obtained within 1 week before surgery) to peak value within the first 7 days postsurgery.¹⁷ Moreover, to accurately reflect changing renal function, adjusting serum creatinine (SCr) values for fluid balance will be used. Adjusted SCr=measured SCr×(1+[cumulative net fluid balance (L)/total body water (kg)]). Postoperative SCr will be recorded daily for 7 days. We will also record peak SCr during hospital stay and SCr before discharge on all patients. We will calculate pRIFLE scores using the eGFR calculated from the eCrCl with the Schwartz formula¹⁸: eGFR (mL/min per 1.73 m²)=0.413×height (cm)/SCr (mg/dL). Our AKI definition will not include urine output as urine output is frequently influenced by modified ultrafiltration and diuretic use.

The secondary end points include: (1) the other oxygen metabolism parameters during CPB, including mixed venous oxygen saturation (SvO₂), the peak lactate concentration and regional cerebral and renal oxygen

saturation, (2) major complication (ie, low cardiac output syndrome; typically based on two or more of the following: cardiac index ≤ 2.2 L/min/m², blood lactate >3 mmol/L or increase in blood lactate of at least 2 mmol/L from baseline, SvO₂ $<50\%$ or increase in SaO₂ to SvO₂ difference by at least 20% from baseline, urine output <1 mL/kg/hour, peripheral skin temperature to core body temperature difference of $>7^{\circ}\text{C}$),¹⁹ severe respiratory failure based on blood gas, treatment for pneumonia (ie, antibiotics), sepsis, deep sternal wound infection and all-cause mortality (in-hospital or in-hospital or within 30 days postoperatively), (3) short-term clinical outcomes including time to extubation, mechanical ventilation time, PICU time, length of hospital stay.

Perioperative management and monitoring

General anaesthesia will be induced with midazolam, sufentanil and propofol as necessary. Tracheal intubation will be facilitated with either rocuronium or cisatracurium. There is no restriction on the type or dose of anaesthetic used to induce anaesthesia. The trachea will be intubated, and mechanical ventilation starts to achieve an end-tidal carbon dioxide tension of 35–45 mm Hg. After the induction, anaesthesia will be maintained with continuous infusion of propofol or inhalation of sevoflurane until the end of surgery. Midazolam, sufentanil and cisatracurium will be given as needed.

A standard CPB equipment with a disposable hollow-fibre membrane oxygenator (Pixie, Medtronic, USA) and a roller pump (Stockert-5, Sorin Group, Germany) will be selected. The pump circuit will be primed with 150–200 mL acetated Ringer's solution, 1–2 units PRBC, 10 g albumin, 1.25 mL/kg 20% mannitol and 10–20 mL 5% sodium bicarbonate. Cold modified St. Thomas blood cardioplegia (1:4) at the dose of 30 mL/kg will be used for all patients. The cardioplegia will be repeated half dose every 20–25 min during surgery. Pump flow rate will be targeted between 2.8 and 3.2 L/min/m². Surgery will be performed under mild hypothermia (33°C–34°C), with mean arterial pressure 30–45 mm Hg and HCT 25%–30% during CPB. Blood gases and haemoglobin values will be measured at the following detailed time points. After the cardiac surgical procedure and aortic unclamping, the heart will be defibrillated if sinus rhythm does not resume spontaneously. And after weaning from CPB, modified ultrafiltration (MUF) will be routinely performed and the HCT will be maintained at 30%–35%. Then, protamine will be used to reverse the effect of heparin. Postoperatively, all patients will be transferred to the PICU.

The blood gases will be routinely monitored at the following time points, that is, after anaesthesia induction, CPB initiation, 5 min after aortic clamping, every 10 min during the periods of aortic cross-clamping, at rewarming, before CPB weaning and after MUF. Moreover, during CPB, blood gases should be re-examined 5 min after the completion of any intervention measures, such as adjustment of pump flow rate and ventilation parameters, blood transfusion, ultrafiltration and so on.

The DO_{2i} will be calculated based on the blood gases during the period of aortic cross-clamping. The nadir DO_{2i} will be taken as the lowest of all calculated values. And the DO_{2i} will be computed using the following formula¹³: $\text{DO}_{2i} \text{ (mL/min/m}^2\text{)} = \text{pump flow (L/min/m}^2\text{)} \times (1.36 \times \text{haemoglobin (g/L)} \times \text{haemoglobin saturation (\%)} + 0.031 \times \text{partial pressure of arterial oxygen (mm Hg)}) / \text{BSA (m}^2\text{)}$.

SvO₂ and lactate concentration should also be recorded every 10 min from blood gas during CPB. Renal and cerebral regional oxygen saturation (rSO₂) will be continuously measured every 2 s (EGOS-600A) from the time of anaesthesia to the time of transfer from the operating room to PICU. Baseline rSO₂ levels (before CPB) and both average and nadir levels for the intraoperative period will be recorded. We will also evaluate cumulative time spent during CPB at or below a rSO₂ value 20% less than baseline and cumulative time spent at or above a rSO₂ value 20% more than baseline.

Data collection

All the related data will be collected on the case report form. Preoperative data include patient demographics (sex, age, weight, presence of cyanotic lesions and Fontan candidates), preoperative cardiovascular profile (ejection fraction, New York Heart Association functional class, Society of Thoracic Surgeons–European Association for cardiothoracic surgery congenital heart surgery mortality score (STAT) score,²⁰ pulmonary hypertension and the use of ACE inhibitor, diuretics and β -blockers prior to cardiac surgery), presence of comorbidities (lung infection, hypothyroidism, previous cerebrovascular accident) and laboratory assays (SCr value and haemoglobin). Operative data including type of operation, CPB duration, aortic cross-clamp time, nadir body temperature during CPB, number of PRBC units transfused during surgery, rSO₂ value, nadir SvO₂, nadir DO_{2i} and the peak blood glucose and lactate concentration on CPB will be assessed. We will record postoperative data including SCr value, AKI stage, the peak lactate and blood glucose concentration in the PICU, the number of PRBC units transfused in the PICU, the maximum VIS score, urine output (mL/kg/hour), maximum fluid overload (FO) (ie, (daily (fluid in (L)–fluid out (L)) $\times 100$ /PICU admission patient weight (kg)) within the first week of PICU admission and cumulative FO (cFO) (eg, cFO=%FO day of surgery (DOS)+%FO postoperative day 1; also, for DOS, the cFO includes intraoperative fluid status.²¹ We will also evaluate the association between CS-AKI and postoperative short-term outcomes (major complication and all-cause mortality, time to extubation, mechanical ventilation time, PICU time, hospital stay).

Statistical considerations

Sample size estimate

The sample selected for this study is based on the finding of our prior pilot cohort study exploring the critical DO_{2i} threshold in paediatric patients undergoing cardiac

surgery with CPB. That study showed that 38.5% paediatric patients developed CS-AKI postoperatively. A non-inferiority threshold of 10% is considered according to previous studies.¹⁴ A sample size of 75 per group will yield 80% power to obtain a significant difference between the two groups, using a two-sample t-test at a one-sided 0.025 level of significance. To account for an approximately 10% dropout rate, a total of 166 subjects (83 subjects for each group) will be enrolled.

Statistical analyses

Continuous variables will be described as the mean (SD), median (IQR) when not normally distributed and categorical variables with count (n) and proportions (%). The normality of distribution will be tested with the Kolmogorov-Smirnov test. Baseline characteristics will be compared using χ^2 or Fisher's exact tests and a Student's t-test. The primary outcome, the occurrence of AKI after surgery, will be compared using χ^2 or Fisher's exact tests, and the relative risks and the 95% CI will be calculated. The secondary outcomes, which are the continuous variables, will be performed using unequal-variance Student's t-test. The other secondary outcomes, including the major complication and all-cause mortality will be compared using χ^2 or Fisher's exact tests. In addition, a multiple logistic regression analysis will be used to identify relevant covariates (the oxygen metabolism parameters such as DO_2i , SvO_2 , lactate, rSO_2 value and other risk factors such as CPB duration, age, %FO) associated with the primary outcome. Analyses of morbidity and mortality will be conducted using the intention-to-treat approach. Logistic regression or Cox proportional hazard model will be carried out for different subgroups. We plan a prespecified subgroup analysis in: (1) patients with CPB duration ≥ 90 min and (2) patients with CPB duration < 90 min. For all the statistical tests, a p value < 0.05 will be considered significant. Statistical analyses will be done using statistical software SPSS V.19.0.

Missing data

Missing data for the primary outcome (baseline and peak SCr levels) will be assumed to be missing completely, and these patients will be excluded from the efficacy analysis. If data are 'missing at random' and accounting for a small proportion, we will first perform analysis by excluding missing values; if data are 'not missing at random', we will attempt to contact authors, investigators to obtain data. Nevertheless, if there is no reply, we will then perform multiple imputations to impute missing values and conduct subsequent analysis to estimate the robustness of the findings.

DISCUSSION

To our knowledge, this will be the first prospective RCT to investigate the prevention of CS-AKI with CPB for paediatric patients receiving GDP strategy aimed at maintaining $\text{DO}_2\text{i} \geq 360 \text{ mL/min/m}^2$ compared with those

receiving standard CPB flow rate management factored on BSA and temperature. The results of this RCT will fill the gap of GDP strategy in paediatric cardiac surgery patients, and provide new ideas for optimising the perfusion strategy and improving the prognosis in paediatrics, which has significant clinical value.

CS-AKI is defined as $\text{eCrCl} > 25\%$ of baseline within the first 7 days postsurgery. Although several standardised definitions for CS-AKI have been developed, no consensus exists regarding which to use in children. In our study, pRIFLE criteria is selected due to following reasons. First, pRIFLE is more sensitive, identifying a greater number of mild AKI cases.^{22 23} The pRIFLE criteria are based on changes in eCrCl while AKIN and The Kidney Disease: Improving Global Outcomes are mainly based on changes in SCr. Many studies reported that eCrCl in infants better reflects renal function than SCr alone due to their insufficient renal function.^{24 25} Second, small children, compared with older children and adults, have very low baseline SCr owing to the dependency of SCr on muscle mass. Thus, the advantage of the 'increase in SCr $> 0.3 \text{ mg/dL}$ ' criterion in the AKIN disappears with regard to children with baseline $\text{Cr} \leq 0.5 \text{ mg/dL}$.

GDP is a refined and individualised CPB perfusion strategy proposed in recent years. It involves aggressive patient management and incorporates continuous monitoring of oxygen metabolism parameters, such as DO_2i , carbon dioxide production and oxygen extraction index, so as to tailor perfusion to each patient's specific needs.²⁶ Several clinical studies have shown that a GDP strategy aimed at maintaining DO_2i above the critical threshold (reported to be $260\text{--}300 \text{ mL/min/m}^2$ in adults) during CPB, is associated with reduced risk of CS-AKI.^{8-10 13} However, no clear standards of paediatric critical DO_2i exist. Our prior prospective cohort study has found that the nadir $\text{DO}_2\text{i} < 353 \text{ mL/min/m}^2$ was an independently risk predictor of CS-AKI in infants. We chose a conservative target of 360 mL/min/m^2 in our RCT to remain safely above the risk threshold we found. The main intervention in this study is to tailor the perfusion flow according to the HCT value so as to maintain a DO_2i above the prespecified threshold. In the event of low HCT values, an increasing perfusion flow was unable to maintain the DO_2i above the threshold, and ultrafiltration and/or PRBC transfusion could be considered.

Our research has certain limitations. First, our study lacks patients treated under hypothermic conditions $< 32^\circ\text{C}$, when different limits of critical DO_2i are likely to occur. Second, CS-AKI is certainly a multifactorial event, and we could not include all of the possible determinants in our analyses. Third, although adjusting SCr values for fluid balance will be used in our study, SCr has several limitations for diagnosing early AKI and the incidence of CS-AKI may be underestimated. Biomarkers of renal cell injury might help us identify additional patients at an earlier stage.²⁷

Patient and public involvement

Patients' priorities, experience and preferences will be not involved in the development of the research question and outcome measures, the design of this study or the recruitment and conduct of the study. The results will be not disseminated to study participants.

ETHICS AND DISSEMINATION

The study has been approved by the Biomedical Research Ethics committee of West China Hospital of Sichuan University on 5 December 2019 (approval number: 2019(863)). Written informed consent will be obtained from all patients before inclusion. Trial oversight will be performed by an independent Data Safety and Monitoring Board (Biomedical Research Ethics committee). The task is to oversee the safety of the trial subjects and to monitor integrity and validity of the conduct of the clinical trial. Results will be disseminated through peer-reviewed publications and conferences.

Contributors YZ helped designing the trial, collected and analysed the data and drafted the manuscript. XZ helped designing the trial, performed the study. BW collected data and analysed the data. LG performed study coordination and collected data. RZ conceived the study, designed the trial and drafted the manuscript. All authors read and approved the final manuscript.

Funding This study will be supported by 1-3-five project for disciplines of excellence—Clinical Research Incubation Project, West China Hospital, Sichuan University (approval number: 2018HXFH034), and by grants from the National Nature Science Foundation of China (approval number: 81970346).

Competing interests None declared.

Patient consent for publication Not required.

Provenance and peer review Not commissioned; externally peer reviewed.

Supplemental material This content has been supplied by the author(s). It has not been vetted by BMJ Publishing Group Limited (BMJ) and may not have been peer-reviewed. Any opinions or recommendations discussed are solely those of the author(s) and are not endorsed by BMJ. BMJ disclaims all liability and responsibility arising from any reliance placed on the content. Where the content includes any translated material, BMJ does not warrant the accuracy and reliability of the translations (including but not limited to local regulations, clinical guidelines, terminology, drug names and drug dosages), and is not responsible for any error and/or omissions arising from translation and adaptation or otherwise.

Open access This is an open access article distributed in accordance with the Creative Commons Attribution Non Commercial (CC BY-NC 4.0) license, which permits others to distribute, remix, adapt, build upon this work non-commercially, and license their derivative works on different terms, provided the original work is properly cited, appropriate credit is given, any changes made indicated, and the use is non-commercial. See: <http://creativecommons.org/licenses/by-nc/4.0/>.

ORCID iD

Yan Zhang <http://orcid.org/0000-0003-2146-1052>

REFERENCES

- Van Driest SL, Jooste EH, Shi Y, *et al*. Association between early postoperative acetaminophen exposure and acute kidney injury in pediatric patients undergoing cardiac surgery. *JAMA Pediatr* 2018;172:655–63.
- Yoneyama F, Okamura T, Takigiku K, *et al*. Novel urinary biomarkers for acute kidney injury and prediction of clinical outcomes after pediatric cardiac surgery. *Pediatr Cardiol* 2020;41:695–702.
- Li S, Krawczeski CD, Zappitelli M, *et al*. Incidence, risk factors, and outcomes of acute kidney injury after pediatric cardiac surgery: a prospective multicenter study. *Crit Care Med* 2011;39:1493–9.
- Yuan S-M. Acute kidney injury after pediatric cardiac surgery. *Pediatr Neonatol* 2019;60:3–11.
- Wang Y, Bellomo R. Cardiac surgery-associated acute kidney injury: risk factors, pathophysiology and treatment. *Nat Rev Nephrol* 2017;13:697–711.
- Li S, Fu S, Xiao Y, *et al*. Recent perioperative pharmacological prevention of acute kidney injury after cardiac surgery: a narrative review. *Am J Cardiovasc Drugs* 2017;17:17–25.
- Leow EH, Chan YH, Ng YH, *et al*. Prevention of acute kidney injury in children undergoing cardiac surgery: a narrative review. *World J Pediatr Congenit Heart Surg* 2018;9:79–90.
- Newland RF, Baker RA. Low oxygen delivery as a predictor of acute kidney injury during cardiopulmonary bypass. *J Extra Corpor Technol* 2017;49:224–30.
- Ranucci M, Romitti F, Isgrò G, *et al*. Oxygen delivery during cardiopulmonary bypass and acute renal failure after coronary operations. *Ann Thorac Surg* 2005;80:2213–20.
- de Somer F, Mulholland JW, Bryan MR, *et al*. O₂ delivery and CO₂ production during cardiopulmonary bypass as determinants of acute kidney injury: time for a goal-directed perfusion management? *Crit Care* 2011;15:R192.
- Murphy GS, Hessel EA, Groom RC. Optimal perfusion during cardiopulmonary bypass: an evidence-based approach. *Anesth Analg* 2009;108:1394–417.
- Baker RA. Variation in measurement and reporting of goal directed perfusion parameters. *J Extra Corpor Technol* 2017;49:P2–7.
- Ranucci M, Isgrò G, Romitti F, *et al*. Anaerobic metabolism during cardiopulmonary bypass: predictive value of carbon dioxide derived parameters. *Ann Thorac Surg* 2006;81:2189–95.
- Ranucci M, Johnson I, Willcox T, *et al*. Goal-directed perfusion to reduce acute kidney injury: a randomized trial. *J Thorac Cardiovasc Surg* 2018;156:1918–27.
- Mukaida H, Matsushita S, Kuwaki K, *et al*. Time-dose response of oxygen delivery during cardiopulmonary bypass predicts acute kidney injury. *J Thorac Cardiovasc Surg* 2019;158:492–9.
- Baillie GR, Uhlig K, Levey AS. Clinical practice guidelines in nephrology: evaluation, classification, and stratification of chronic kidney disease. *Pharmacotherapy* 2005;25:491–502.
- Akcan-Arikan A, Zappitelli M, Loftis LL, *et al*. Modified rifle criteria in critically ill children with acute kidney injury. *Kidney Int* 2007;71:1028–35.
- Schwartz GJ, Muñoz A, Schneider MF, *et al*. New equations to estimate GFR in children with CKD. *J Am Soc Nephrol* 2009;20:629–37.
- Burkhardt BEU, Rücker G, Stiller B. Prophylactic milrinone for the prevention of low cardiac output syndrome and mortality in children undergoing surgery for congenital heart disease. *Cochrane Database Syst Rev* 2015:CD009515.
- O'Brien SM, Clarke DR, Jacobs JP, *et al*. An empirically based tool for analyzing mortality associated with congenital heart surgery. *J Thorac Cardiovasc Surg* 2009;138:1139–53.
- Rizza A, Romagnoli S, Ricci Z. Fluid status assessment and management during the perioperative phase in pediatric cardiac surgery patients. *J Cardiothorac Vasc Anesth* 2016;30:1085–93.
- Lex DJ, Tóth R, Cserép Z, *et al*. A comparison of the systems for the identification of postoperative acute kidney injury in pediatric cardiac patients. *Ann Thorac Surg* 2014;97:202–10.
- Sutherland SM, Byrnes JJ, Kothari M, *et al*. AKI in hospitalized children: comparing the pRIFLE, akin, and KDIGO definitions. *Clin J Am Soc Nephrol* 2015;10:554–61.
- Zappitelli M, Parikh CR, Akcan-Arikan A, *et al*. Ascertainment and epidemiology of acute kidney injury varies with definition interpretation. *Clin J Am Soc Nephrol* 2008;3:948–54.
- Hogg RJ, Furth S, Lemley KV, *et al*. National kidney Foundation's kidney disease outcomes quality initiative clinical practice guidelines for chronic kidney disease in children and adolescents: evaluation, classification, and stratification. *Pediatrics* 2003;111:1416–21.
- Groom RC. Is it time for goal-directed therapy in perfusion. *J Extra Corpor Technol* 2017;49:P8–12.
- Yoneyama F, Okamura T, Takigiku K, *et al*. Novel urinary biomarkers for acute kidney injury and prediction of clinical outcomes after pediatric cardiac surgery. *Pediatr Cardiol* 2020;41:695–702.