

## Typical ECG findings in an unconscious patient

R. Joustra<sup>1,2</sup> · F. N. Polderman<sup>3</sup> · J. L. Smeets<sup>2</sup> · M. C. Daniëls<sup>1</sup> · M. Boulaksil<sup>1,2</sup>

Published online: 26 October 2016

© The Author(s) 2016. This article is available at SpringerLink with Open Access.

A 62-year-old woman known with a depressive disorder but unremarkable cardiovascular history was admitted to our emergency department in a state of unconsciousness. Her husband had found her unconscious at home and called an ambulance. She had no history of syncope or suicidality. Physical examination demonstrated a Glasgow Coma Scale of E<sub>1</sub>M<sub>5</sub>V<sub>1</sub> without any lateralising neurological symptoms. She was haemodynamically stable, but was intubated because of failure to maintain airway tone due to unconsciousness. She had no fever. Laboratory results showed: sodium 150 mmol/l, potassium 3.2 mmol/l, a normal glomerular filtration rate, haemoglobin 7.6 mmol/l; normal thrombocytes and leucocytes. The ECG on admission is shown in Fig. 1.

1. What is your diagnosis?
2. What is the most likely mechanism?

### Answer

You will find the answer elsewhere in this issue.

**Conflict of interest** R. Joustra, F.N. Polderman, J.L. Smeets, M.C. Daniëls and M. Boulaksil declare that they have no competing interest.

**Open Access** This article is distributed under the terms of the Creative Commons Attribution 4.0 International License (<http://creativecommons.org/licenses/by/4.0/>), which permits unrestricted use, distribution, and reproduction in any medium, provided you give appropriate credit to the original author(s) and the source, provide a link to the Creative Commons license, and indicate if changes were made.

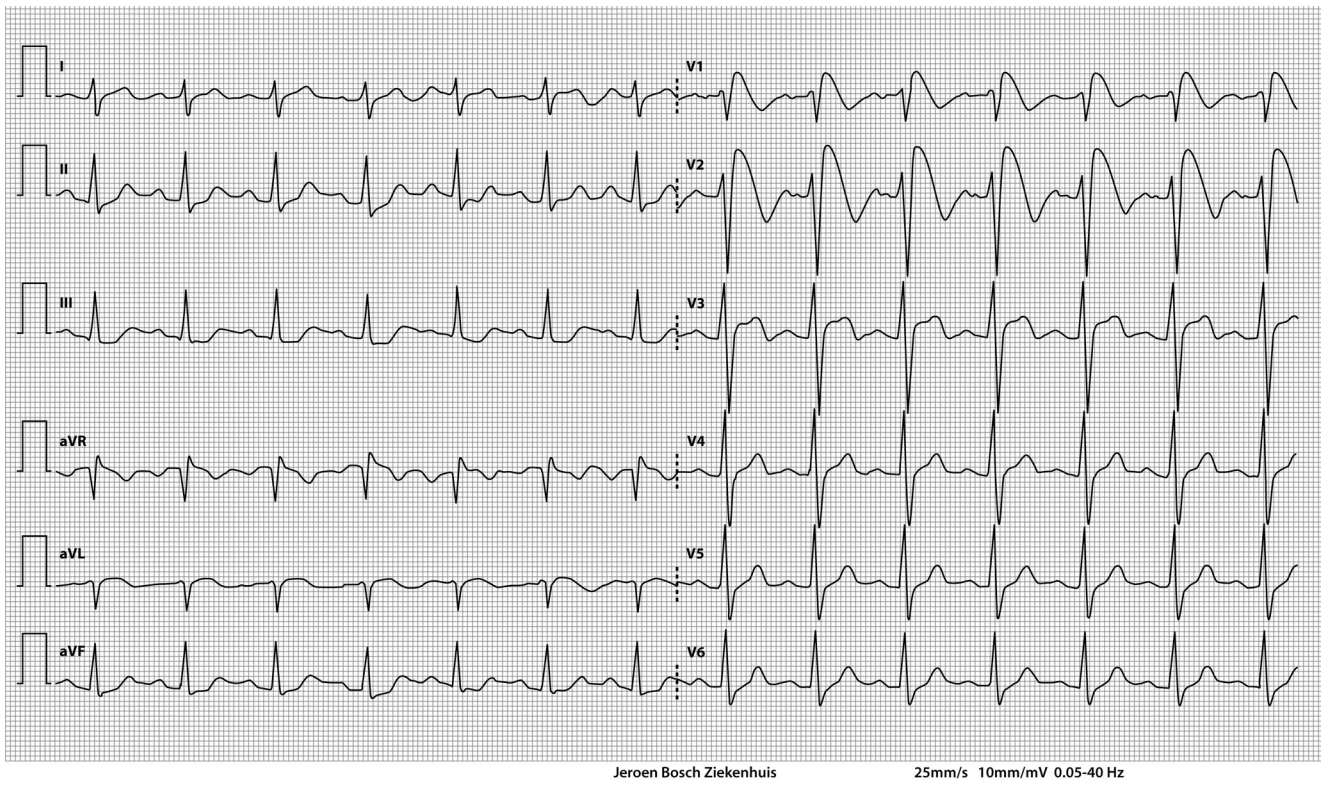
---

✉ M. Boulaksil  
m.boulaksil@gmail.com

<sup>1</sup> Department of Cardiology, Jeroen Bosch Hospital, 's-Hertogenbosch, The Netherlands

<sup>2</sup> Department of Cardiology, Radboud University Medical Center, Nijmegen, The Netherlands

<sup>3</sup> Department of Intensive Care Medicine, Jeroen Bosch Hospital, 's-Hertogenbosch, The Netherlands



**Fig. 1** ECG on admission