

Taxonomy and phylogeny of *Dichostereum* (Russulales), with descriptions of three new species from southern China

Shi-Liang Liu¹, Shuang-Hui He¹

¹ Institute of Microbiology, Beijing Forestry University, Beijing 100083, China

Corresponding author: Shuang-Hui He (shuanghuihe@yahoo.com)

Academic editor: R. Henrik Nilsson | Received 28 July 2018 | Accepted 24 September 2018 | Published 10 October 2018

Citation: Liu S-L, He S-H (2018) Taxonomy and phylogeny of *Dichostereum* (Russulales), with descriptions of three new species from southern China. MycoKeys 40: 111–126. <https://doi.org/10.3897/mycokeys.40.28700>

Abstract

Nine species of *Dichostereum* were subjected to phylogenetic analyses, based on a combined dataset of ITS1-5.8S-ITS2-nrLSU-*tefl* sequences. The morphology of specimens collected from China and Australia were studied. Three species, *D. austrosinense*, *D. boidinii* and *D. eburneum*, collected from southern China, are described and illustrated as new to science, based on the morphological and molecular evidence. *Dichostereum austrosinense* is characterised by the relatively large gloecystidia (80–130 × 8–15 µm) and basidiospores (7.3–8 µm in diam.) with large warts and crests. *Dichostereum boidinii* is distinguished by its thick basidiomata and relatively small basidiospores (5.5–6.5 µm in diam.) with large warts and crests. *Dichostereum eburneum* is unique in having pale basidiomata growing on bark of living *Castanopsis*, abundant crystals in the context and basidiospores with dense and large ornamentations. A key to the 5 species of *Dichostereum* in China is given.

Keywords

Amyloid basidiospores; corticioid fungi; dichohyphae; Peniophoraceae; *Vararia*

Introduction

Dichostereum Pilát, typified with *D. durum* (Bourdot & Galzin) Pilát, is a small and well-delimited corticioid genus in Russulales. It is characterised by resupinate basidiomata with smooth or grandinoid hymenophore, dimitic hyphal system with dextrinoid dichohyphae and clamped generative hyphae, gloecystidia and ellipsoid or

subglobose, ornamented basidiospores with a strong amyloid reaction in Melzer's reagent (Hallenberg 1985; Bernicchia and Gorjón 2010). Previously, *Dichostereum* was placed in Lachnocladiaceae, which includes genera with dextrinoid skeletal hyphae (Reid 1965; Parmasto 1968, 1970; Hallenberg 1985). However, recent phylogenetic analyses, based on DNA sequences, showed that *Dichostereum* formed a monophyletic lineage in the Peniophoraceae clade, which includes genera with or without dextrinoid hyphae (Larsson and Larsson 2003; Miller et al. 2006; Larsson 2007).

Dichostereum was once treated as a subgenus of *Vararia* P. Karst. (Peniophoraceae, Russulales) by some mycologists since the two genera are very similar in morphology except that the latter has smooth basidiospores (Boidin 1967; Parmasto 1970; Lanquetin 1973). Boidin and Lanquetin (1977) emended the description of *Dichostereum* and retained it as a separate genus. Later, Boidin and Lanquetin (1980) monographed the genus and provided a key to its 11 species based on evidence of morphology, distribution and intercompatibility tests of cultures. Based on limited sampling, their results showed that *D. effusatum* (Cooke & Ellis) Boidin & Lanq. and *D. granulorum* (Pers.) Boidin & Lanq. were widely distributed, while the other species seemed to be rather endemic (Boidin and Lanquetin 1980). Few studies on the genus have been carried out since then and many regions including East Asia need further collecting and study (Boidin et al. 1987, Boidin and Michel 1998).

Previously, two species, *Dichostereum boreale* (Pouzar) Ginns & M.N.L. Lefebvre (= *D. granulorum*) and *D. pallescens* (Schwein.) Boidin & Lanq., were reported in temperate China (Dai 2011). The species diversity of the genus in China is still unclear. In the present paper, we provide a morphological and phylogenetic study of the genus based on specimens mostly collected from southern China. This is part of an ongoing study of the corticioid fungi of the Russulales in China.

Materials and methods

Morphological studies

Voucher specimens were deposited in the herbaria of Beijing Forestry University, Beijing, China (**BJFC**) and in the Centre for Forest Mycology Research, U.S. Forest Service, Madison, USA (**CFMR**). Freehand sections were made from dried basidiomata and mounted in 2% (w/v) potassium hydroxide (KOH), 1% phloxine (w/v) or Melzer's reagent. Microscopic examinations were carried out with a Nikon Eclipse 80i microscope (Nikon Corporation, Japan) at magnifications up to 1000×. Drawings were made with the aid of a drawing tube. All measurements were carried out with sections mounted in Melzer's reagent. Ornamentations were excluded from the measurements of basidiospores. Scanning electron micrographs (SEM) were taken with a JEOL JSM-6700F microscope (JEOL, Japan). Dried specimens were mounted directly in gold and platinum and examined and photographed at 10.0 kV. Colour names and codes follow Kornerup and Wanscher (1978). Herbarium code designations are from Index Herbariorum (Thiers, continuously updated).

DNA extraction and sequencing

The CTAB plant genome rapid extraction kit DN14 (Aidlab Biotechnologies Co. Ltd, Beijing) was used for DNA extraction and PCR amplification from dried specimens or cultures. The ITS, partial nrLSU and *tefl* markers were amplified with the primer pairs ITS5/ITS4 (White et al. 1990), LR0R/LR7 (Vilgalys and Hester 1990) and 983F/1567R (Rehner and Buckley 2005), respectively. The PCR procedures followed Dai and He (2016). DNA sequencing was performed at Beijing Genomics Institute and the sequences were deposited in GenBank (Benson et al. 2018). The sequence quality control followed Nilsson et al. (2012). BioEdit v.7.0.5.3 (Hall 1999) and Geneious v.11.1.15 (Kearse et al. 2012) were used for chromatogram check and contig assembly.

Phylogenetic analyses

The molecular phylogeny was inferred from a combined dataset of ITS1-5.8S-ITS2-nrLSU-*tefl* sequences of representative members of Peniophoraceae *sensu* Larsson (2007) (Table 1). *Echinodontium tinctorium* (Ellis & Everh.) Ellis & Everh. was selected as the outgroup (Liu et al. 2017a). The sequences of the three markers (ITS, nrLSU and *tefl*) were aligned separately using MAFFT v.7 (Katoh et al. 2017, <http://mafft.cbrc.jp/alignment/server/>) with the G-INS-i iterative refinement algorithm and optimised manually in BioEdit v.7.0.5.3. The programme Gblocks v.0.91b (Castresana 2000) was then used to exclude poorly aligned positions of the ITS alignment. The separate alignments were concatenated using Mesquite v.3.5.1 (Maddison and Maddison 2018). The combined alignments were deposited in TreeBase (<http://treebase.org/treebase-web/home.html>, submission ID: 23332).

For both Maximum Likelihood (ML) and Bayesian Inference (BI), a partitioned analysis was performed with the following five partitions: ITS1, 5.8S, ITS2, nrLSU and *tefl*. The ML analysis was performed using RAxML v.8.2.10 (Stamatakis 2014) with the bootstrap values (ML-BS) obtained from 1,000 replicates and the GTRGAMMA model of nucleotide evolution. The maximum parsimony (MP) analysis was performed using PAUP* 4.0a162 (Swofford 2003). Trees were generated using 100 replicates of random stepwise addition of sequence and tree-bisection reconnection (TBR) branch-swapping algorithm with all characters given equal weight. Branch supports (MP-BS) for all parsimony analyses were estimated by performing 1,000 bootstrap replicates with a heuristic search of 10 random-addition replicates for each bootstrap replicate. The BI was performed using MrBayes 3.2.6 (Ronquist et al. 2012). The best-fit substitution model for each partitioned locus was estimated separately with jModeltest v.2.17 (Darriba et al. 2012). Four Markov chains were run for 6,000,000 generations until the split deviation frequency value was lower than 0.01. The convergence of the runs was checked using Tracer v.1.7 (Rambaut et al. 2018). Trees were sampled every 100th generation. The first quarter of the trees, which represented the burn-in phase of the analyses, was discarded and the remaining trees were used to calculate Bayesian posterior probabilities (BPP) in the majority rule consensus tree. All trees were visualised in FigTree 1.4.2 (Rambaut 2014).

Table 1. Species and sequences used in the phylogenetic analyses. Newly generated sequences are set in bold. Holotypes are marked with *.

Taxa	Voucher	Locality	ITS	nrLSU	<i>tefl</i>
<i>Asterostroma bambusicola</i>	He 4132	Thailand	KY263865	KY263871	MH669240
<i>A. cervicolor</i>	He 4020	China	KY263859	KY263869	–
<i>Baltazaria eurasiaticogalactina</i>	CBS 666.84	France	–	AY293211	–
<i>B. octopodites</i>	FLOR 56449	Brazil	MH260025	MH260047	–
<i>Dichostereum austrosinense</i>	He 4871*	China	MH538317	MH538334	–
	He 4316	China	MH538316	MH538335	–
	He 3551	China	MH538314	–	MH550363
<i>D. boidinii</i>	He 5026*	China	MH538324	MH538330	–
	He 1662	China	MH538309	–	MH550360
	He 4410	China	MH538315	MH538331	MH550361
	He 462	China	MH538311	–	–
	Dai 16117	China	MH538312	MH538327	MH550362
<i>D. durum</i>	Fungi Gallici 1985	France	AF506429	AF506429	–
<i>D. eburneum</i>	He 5374*	China	MH538318	MH538337	MH550366
<i>D. effusatum</i>	GG 930915	France	AF506390	AF506390	–
	FP 101758 Sp	USA	MH538323	MH538336	MH550367
	CBS 516.80	USA	–	AF323739	–
<i>D. granulosum</i>	NH 7137	Canada	AF506391	AF506391	–
	FP 133479 Sp	USA	MH538321	MH538333	MH550368
	He 1887	China	MH538313	MH538332	–
<i>D. pallescens</i>	Kropp 2	USA	MH538320	MH538326	MH550365
	CBS 717.81	USA	–	AF518614	–
	He 3266	China	MH538310	MH538325	MH550364
<i>D. aff. pallescens</i>	KHL 10258	Puerto Rico	AF506428	AF506428	–
<i>D. rhodosporum</i>	Dai 18625A	Australia	MH538319	MH538329	MH550370
<i>D. sordulentum</i>	FP 11735 Sp	USA	MH538322	MH538328	MH550369
<i>Duportella tristicula</i>	He 4775	China	MH669235	MH669239	MH669245
<i>Echinodontium tinctorium</i>	HHB 12866 Sp	USA	KY172888	KY172903	MH550371
<i>Gloiothele lactescens</i>	EL 8-98	Sweden	AF506453	AF506453	–
<i>G. lamellosa</i>	KHL11031	Venezuela	AF506454	AF506454	–
<i>Lachnocladium cf. brasiliense</i>	CALD 161213-1	Brazil	MH260037	MH260055	–
<i>L. schweinfurthianum</i>	KM 49740	Cameroon	MH260033	MH260051	–
<i>L. sp.</i>	KHL10556	Jamaica	AF506461	AF506461	–
<i>Parapterulicium subarbusculum</i>	FLOR 56456	Brazil	MH260026	MH260026	–
	FLOR 56459	Brazil	MH260027	MH260049	–
<i>Peniophora polygonia</i>	He 3668	China	MH669233	MH669237	MH669243
<i>P. rufa</i>	He 2788	China	MH669234	MH669238	MH669244
<i>Scytinostroma portentosum</i>	EL11-99	Sweden	AF506470	AF506470	–
<i>Vararia investiens</i>	He 2104	USA	–	MH669236	MH669242
	FP 151122	USA	MH971976	MH971977	–
<i>Vesiculomyces citrinus</i>	He 3716	China	KY860369	KY860429	MH669241

Results

Phylogenetic inference

The ITS-nrLSU-*tefl* sequence dataset contained 37 ITS, 38 nrLSU and 18 *tefl* sequences from 40 samples representing 26 ingroup taxa and the outgroup (Table 1). Twenty ITS, 18 nrLSU and 18 *tefl* sequences were generated for this study. The dataset had an aligned length of 2239 characters, of which 1596 were constant, 163 variable characters were parsimony-uninformative and 480 were parsimony-informative. MP analysis yielded six most parsimonious trees. jModelTest suggested TIM2ef+G, K80+G, TPM1uf+G, TIM2+I+G and TrN+I+G to be the best-fit models of nucleotide evolution for ITS1, 5.8S, ITS2, nrLSU and *tefl* markers, respectively, for the Bayesian analysis. The average standard deviation of split frequencies of BI was 0.004704 at the end of the run. MP and BI analyses resulted in an almost identical tree topology compared to the ML analysis. Only the ML tree is shown in Fig. 1 with ML and MP bootstrap values $\geq 50\%$ and Bayesian posterior probabilities ≥ 0.95 labelled along the branches.

In the tree (Fig. 1), the nine sampled species of *Dichostereum* formed a strongly supported clade in Peniophoraceae (ML-BS = 91, MP-BS = 97, BPP = 1.00). *Vararia investiens* (Schwein.) P. Karst., the generic type of *Vararia*, formed a sister lineage to *Dichostereum*, but this close relationship did not receive significant support. Of the three new species, samples of *D. austrosinense* and *D. boidinii* formed two strongly supported lineages, whilst the single specimen of *D. eburneum* formed the sister taxon to *D. boidinii* and *D. aff. pallescens*. *Dichostereum effuscatum* from France and USA and both *D. granulosum* and *D. pallescens* from north America and China, formed three strongly supported lineages. Single samples of *D. durum* from France, *D. rhodosporum* from Australia and *D. sordulentum* from USA formed their own distinct lineages.

Taxonomy

***Dichostereum austrosinense* S.H. He & S.L. Liu, sp. nov.**

Mycobank: MB826931

Figs 2a, 3, 6a

Typification. CHINA. Guangxi Autonomous Region, Jinxiu County, Dayaoshan Nature Reserve, Shengtangshan, on fallen angiosperm trunk, 15 Jul 2017, He 4871 (holotype, BJFC 024390, ITS GenBank accession number: MH538317; isotype in CFMR).

Etymology. “*austrosinense*” referring to the distribution in southern China.

Basidiomata. Perennial, resupinate, effused, closely adnate, inseparable from substrates, coriaceous to soft corky, at first as irregular small patches, later confluent up to 15 cm long, 4.5 cm wide, up to 1 mm thick. Hymenophore surface smooth, greyish-orange

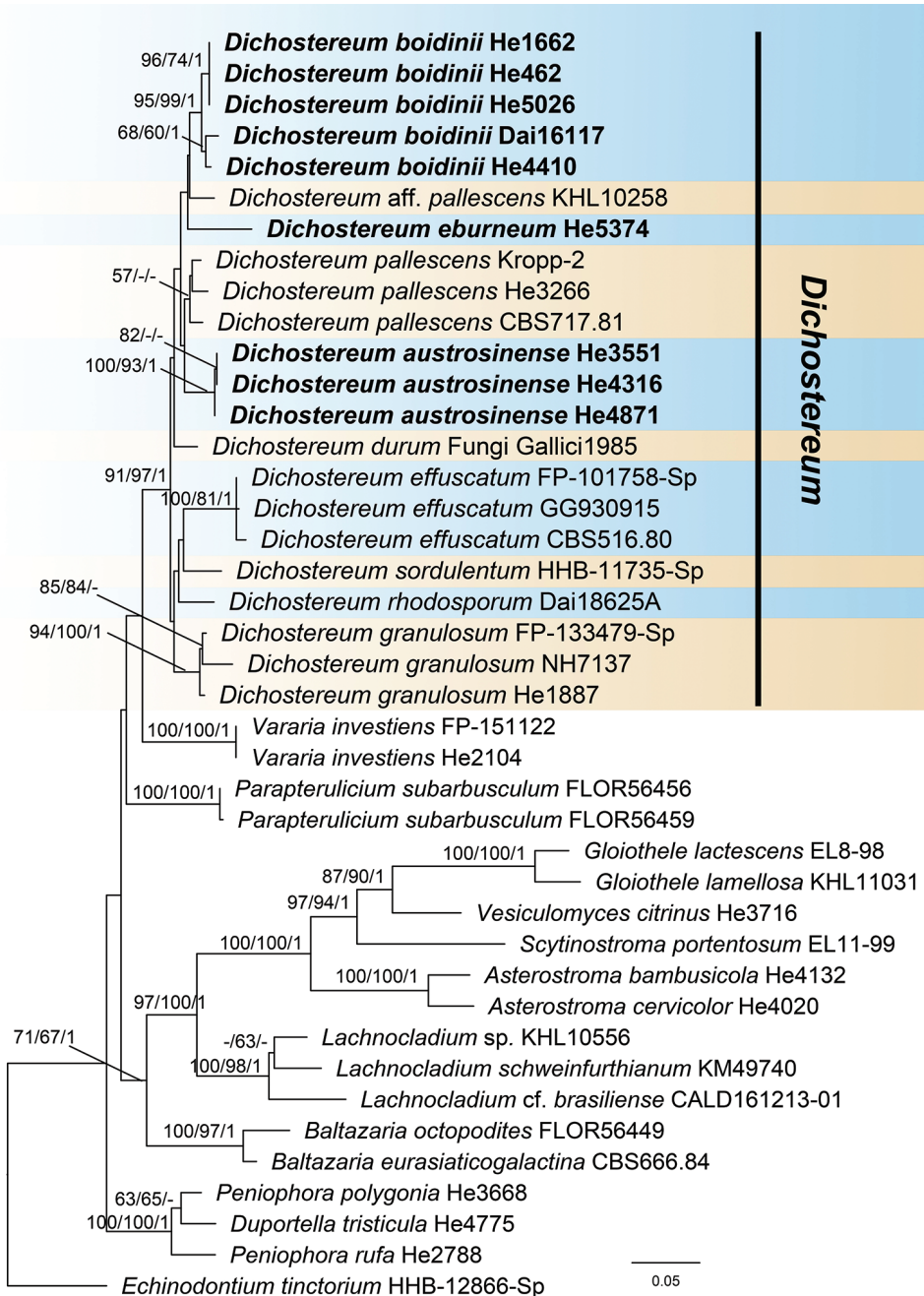


Figure 1. Phylogeny of *Dichostereum* and representatives of Peniophoraceae inferred from ITS-nrLSU-*tef1* sequences. Topology is from ML analysis with maximum likelihood bootstrap support values (≥ 50 , former), parsimony bootstrap support values (≥ 50 , middle) and Bayesian posterior probability values (≥ 0.95 , latter) shown along the branches. Different species of *Dichostereum* are indicated as coloured blocks. The new species are set in bold. Scale bar: 0.05 nucleotide substitutions per site.

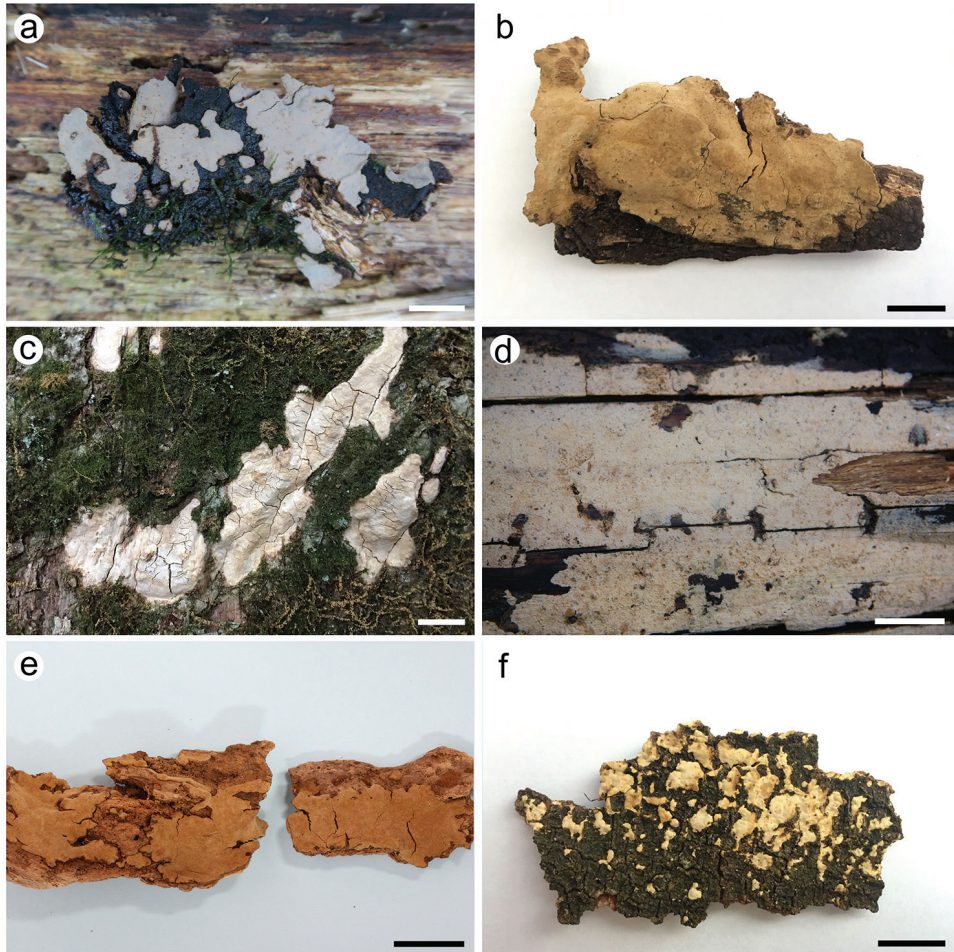


Figure 2. Basidiomata of *Dichostereum* species. **a** *D. austrosinense* (holotype, He 4871) **b** *D. boidinii* (holotype, He 5026) **c** *D. eburneum* (holotype, He 5374) **d** *D. granulatum* (He 1887) **e** *D. pallidum* (He 3266) **f** *D. rhodosporum* (Dai 18625A). Scale bar: 1 cm.

[5B(4–5)], brownish-yellow [5C(7–8)] to light brown [6D(4–8)], not cracking; margin abrupt, concolorous or darker than hymenophore surface.

Microscopic structures. Hyphal system dimitic. Context thickening, compact, composed of generative hyphae, dichohyphae, embedded basidiospores and scattered crystals. Generative hyphae rare, with clamp connections, hyaline, thin- to slightly thick-walled, 2–3 μm in diam. Dichohyphae dominant, hyaline to yellow, distinctly thick-walled, dichotomously branched with acute tips, weakly dextrinoid. Cathymenium composed of dichohyphae, gloeocystidia, basidia and basidioles. Dichohyphae in this layer abundant, similar to those in the context, but strongly dextrinoid, more slender and more frequently branched, 20–50 μm across, 2–4 μm wide at lowest part. Gloeocystidia abundant, subcylindrical to subfusiform, hyaline, slightly thick-walled,

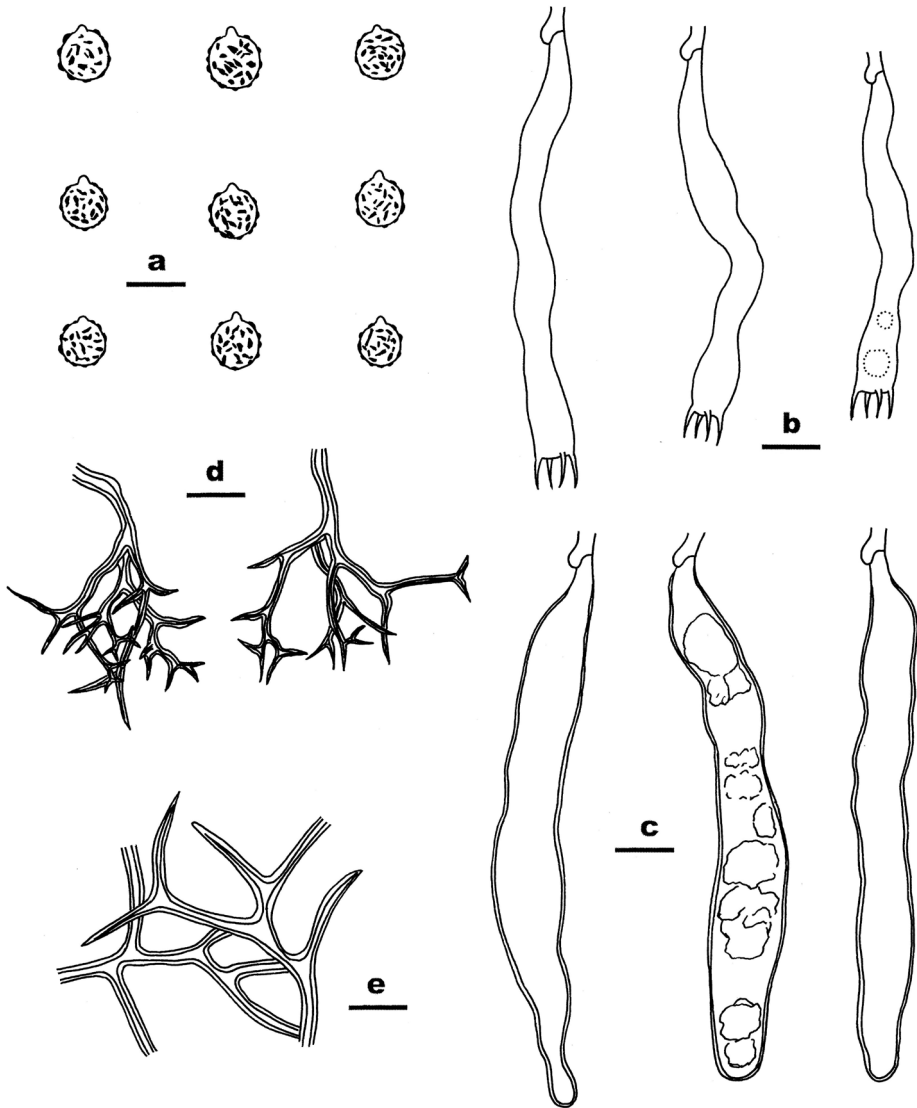


Figure 3. Microscopic structures of *Dichostereum austrosinense* (drawn from the holotype). **a** Basidiospores **b** Basidia **c** Gloeocystidia **d** Dichohyphae from hymenium **e** Dichohyphae from subiculum. Scale bar: 10 μ m.

with or without solidified contents, 80–130 \times 8–15 μ m. Basidia narrowly cylindrical, usually slightly sinuous, hyaline, thin-walled, with 4 sterigmata and a basal clamp connection, 50–80 \times 5–8 μ m; basidioles in shape similar to basidia, but slightly smaller. Basidiospores abundant, subglobose with a distinct apiculus, hyaline to pale yellowish-brown in KOH, thick-walled, strongly amyloid, (7–) 7.3–8 (–9) μ m in diam.; walls ornamented with large warts and crests.

Additional specimens examined. CHINA. Hainan Province, Lingshui County, Diaoluoshan Nature Reserve, on fallen angiosperm trunk, 17 Mar 2016, He 3551 (BJFC 022052); Jiangxi Province, Lianping County, Jiulianshan Nature Reserve, on fallen angiosperm branch, 13 Aug 2016, He 4316 (BJFC 023758).

Remarks. *Dichostereum austrosinense* is overall characterised by the relatively large gloeocystidia and basidiospores with large warts and crests. *Dichostereum peniophoroides* (Burt) Boidin & Lanq. is similar to *D. austrosinense* but differs in having wider gloeocystidia (7–22 µm), slightly larger basidiospores (7–9 µm) with larger ornamentations and a distribution in Caribbean regions (Lanquetin 1973; Boidin and Lanquetin 1980). *Dichostereum austrosinense* is also similar to *D. rhodosporum* (Wakef.) Boidin & Lanq. which differs in having paler basidiomata, smaller ornamentations of basidiospores and a distribution in Australia and New Zealand (Boidin and Lanquetin 1980, Figs. 2 and 6).

***Dichostereum boidinii* S.H. He & S.L. Liu, sp. nov.**

Mycobank: MB826932

Figs 2b, 4, 6b

Typification. CHINA. Hubei Province, Wufeng County, Breeding base of *Magnolia*, on angiosperm stump, 14 Aug 2017, He 5026 (holotype, BJFC 024544, ITS GenBank accession number: MH538324; isotype in CFMR).

Etymology. “*boidinii*” (Lat.), named to honour Dr. Jacques Boidin (Lyon, France) for his contribution to the taxonomy of *Dichostereum*.

Basidiomata. Perennial, resupinate to effused-reflexed with slightly elevated margin, closely adnate, inseparable from substrates, coriaceous to soft corky, up to 8 cm long, 4 cm wide, 1.5 mm thick. Hymenophore surface smooth, greyish-orange [6B(3–4)], brownish-orange [6C(4–6)] to light brown [6D(4–6)], not cracking; margin abrupt, concolorous or darker than hymenophore surface.

Microscopic structures. Hyphal system dimitic. Context thickening, compact, composed of generative hyphae, dichohyphae, embedded basidiospores and scattered crystals. Generative hyphae rare, with clamp connections, hyaline, thin-walled, 2–3 µm in diam. Dichohyphae dominant, hyaline to yellow, distinctly thick-walled, dextrinoid. Catahymenium composed of dichohyphae, gloeocystidia, basidia and basidioles. Dichohyphae in this layer abundant, similar to those in the context, but strongly dextrinoid, more frequently branched with short terminal branches, 20–40 µm across, 2–4 µm wide at lowest part. Gloeocystidia abundant, fusiform to subulate, hyaline, slightly thick-walled, with solidified contents, 20–60 × 7–12 µm. Basidia subclavate to subcylindrical, hyaline, thin-walled, with 4 sterigmata and a basal clamp connection, 25–40 × 5–7 µm; basidioles in shape similar to basidia, but slightly smaller. Basidiospores subglobose with a distinct apiculus, hyaline to pale yellowish-brown in KOH, thick-walled, strongly amyloid, (5–) 5.5–6.5 (–7) µm in diam.; walls ornamented with warts and crests.

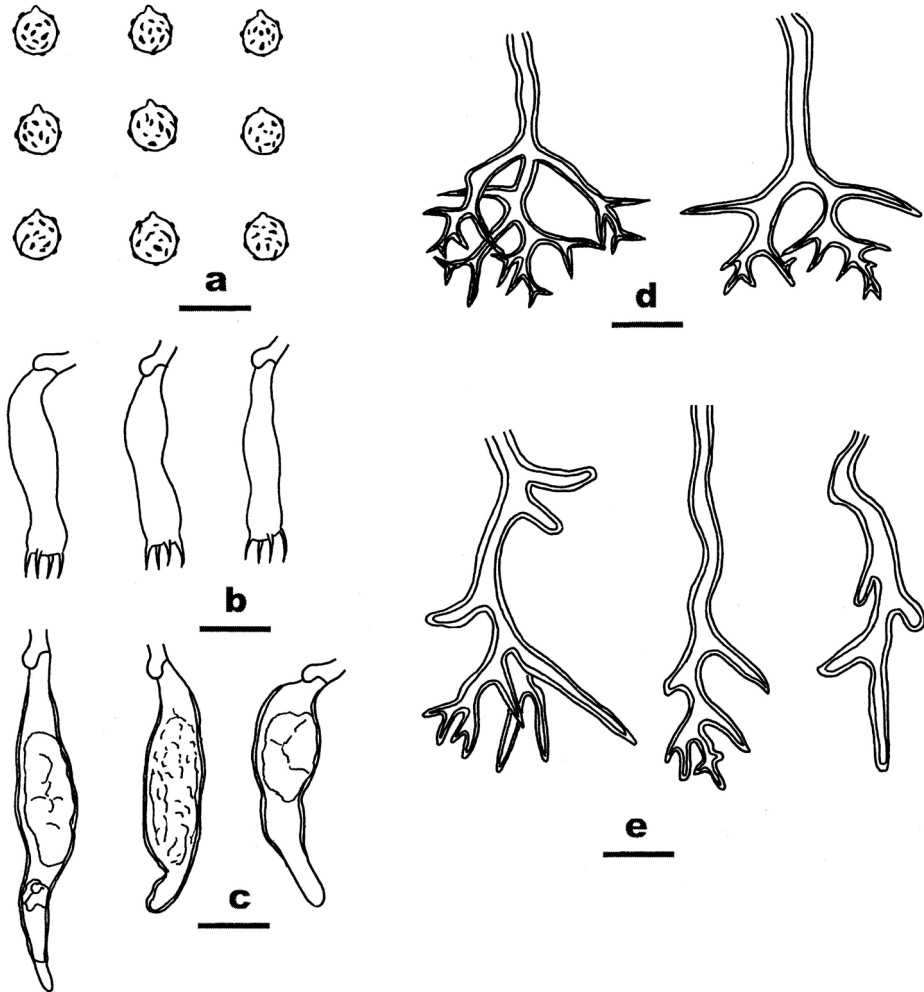


Figure 4. Microscopic structures of *Dichostereum boidinii* (drawn from the holotype). **a** Basidiospores **b** Basidia **c** Gloeocystidia **d** Dichohyphae from hymenium **e** Dichohyphae from subiculum. Scale bar: 10 μ m.

Additional specimens examined. CHINA. Anhui Province, Huangshan County, Huangshan Nature Reserve, on fallen angiosperm trunk, 21 Oct 2011, He 462 (BJFC 012101); Hainan Province, Lingshui County, Diaoluoshan Nature Reserve, on rotten wood of *Dacrydium*, 13 Nov 2015, Dai 16117 (BJFC 020210); Jiangxi Province, Anyuan County, Sanbaishan Forest Park, on fallen angiosperm trunk, 15 Aug 2016, He 4410 (BJFC 023851); Yunnan Province, Kunming, Xishan Park, on angiosperm stump, 17 Jul 2013, He 1662 (BJFC 016129).

Remarks. *Dichostereum boidinii* is widely distributed in southern China and mainly characterised by the thick, brownish basidiomata and relatively small basidiospores with large warts and crests. *Dichostereum pallescens* is similar to *D. boidinii* but differs in

having slender dichohyphae and smaller and sparser ornamentations of basidiospores (Boidin and Lanquetin 1980, Fig. 6). *Dichostereum orientale* Boidin & Lanq. resembles *D. boidinii* by sharing short terminal branches of dichohyphae, but differs in having smaller basidiospores (5–5.5 µm in diam.) and a distribution in Africa (Boidin and Lanquetin 1980). The ornamentation of basidiospores of *D. boidinii* is similar to *D. austrosinense*, but the latter species has larger gloecystidia, basidia and basidiospores.

***Dichostereum eburneum* S.H. He & S.L. Liu, sp. nov.**

Mycobank: MB826933

Figs 2c, 5, 6c

Typification. CHINA. Fujian Province, Wuyishan County, Wuyishan Nature Reserve, on bark of living *Castanopsis*, 6 Apr 2018, He 5374 (holotype, BJFC, ITS GenBank accession number: MH538318; isotype in CFMR).

Etymology. “*eburneum*” referring to the white colour of hymenophore.

Basidiomata. Perennial, resupinate, effused, closely adnate, inseparable from substrate, coriaceous, at first as irregular small patches, later confluent up to 7 cm long, 2 cm wide, 200–500 µm thick. Hymenophore surface smooth, white (5A1), orange white (5A2) to greyish-orange [5B(3–4)], cracking with age; margin thinning out, concolorous with hymenophore.

Microscopic structures. Hyphal system dimitic. Context thickening, compact, composed of generative hyphae, dichohyphae, embedded basidiospores and abundant crystals. Generative hyphae rare, with clamp connections, hyaline, thin- to slightly thick-walled, 2–3 µm in diam. Dichohyphae dominant, hyaline to yellow, distinctly thick-walled, dextrinoid, frequently branched, aseptate, 1–2 µm in diam. Catahymenium composed of dichohyphae, gloecystidia, basidia and basidioles. Dichohyphae in this layer abundant, hyaline to pale yellow, distinctly thick-walled, strongly dextrinoid, dichotomously branched with acute terminal tips, 15–30 µm across, 2–4 µm wide at lowest part. Gloecystidia abundant, fusiform to subclavate, hyaline, thin-walled, with solidified contents, 20–50 × 5–10 µm. Basidia subcylindrical with basal part slightly swollen, hyaline, thin-walled, with 4 sterigmata and a basal clamp connection, 30–45 × 6–9 µm; basidioles in shape similar to basidia, but slightly smaller. Basidiospores subglobose with a distinct apiculus, hyaline to pale yellowish-brown in KOH, thick-walled, strongly amyloid, 6–7 (–8) µm in diam.; walls ornamented with dense, large warts and crests.

Remarks. *Dichostereum eburneum* is characterised by the pale basidiomata on bark of living tree, the presence of abundant crystals in context and basidiospores with dense and large ornamentations. Ecologically and macroscopically, *D. eburneum* resembles *Dendrothele* Höhn. & Litsch., but the microscopic features are largely different (Nakasone and Burdsall 2011). *Dichostereum kenyense* Boidin & Lanq. is similar to *D. eburneum* by sharing the large ornamentations of basidiospores, but differs in having wider span of dichohyphae, slightly larger basidiospores (7–8 µm) and a distribution in Africa (Boidin and Lanquetin 1980).

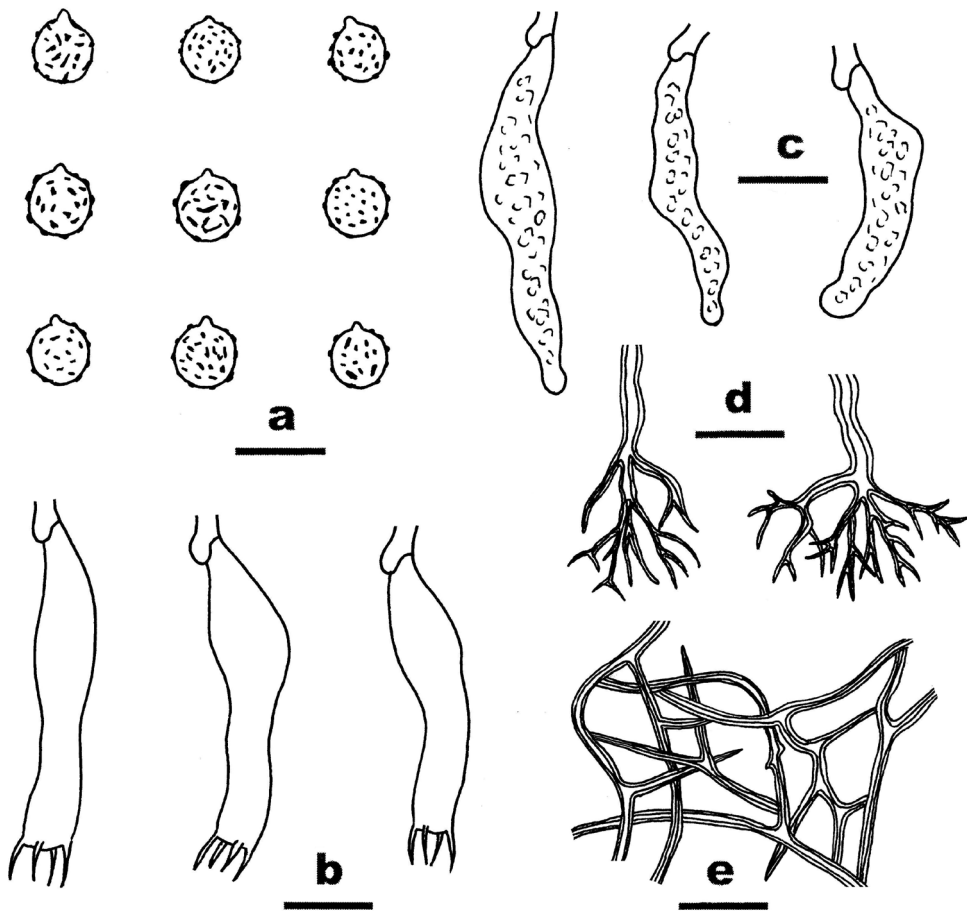


Figure 5. Microscopic structures of *Dichostereum eburneum* (drawn from the holotype). **a** Basidiospores; **b** Basidia **c** Gloeocystidia **d** Dichohyphae from hymenium **e** Dichohyphae from subiculum. Scale bar: 10 μ m.

Key to 5 species of *Dichostereum* in China

- 1 Hymenophore grandinioid; basidiospores ellipsoid *D. granulosum*
- Hymenophore smooth; basidiospores subglobose 2
- 2 Basidiomata white; on bark of living *Castanopsis* *D. eburneum*
- Basidiomata brownish; on dead wood 3
- 3 Gloeocystidia ≥ 80 μ m long *D. austrosinense*
- Gloeocystidia < 80 μ m long 4
- 4 Basidiospores 6.5–7.5 μ m in diam, ornamentation sparse *D. pallescens*
- Basidiospores 5.5–6.5 μ m in diam, ornamentation dense *D. boidinii*

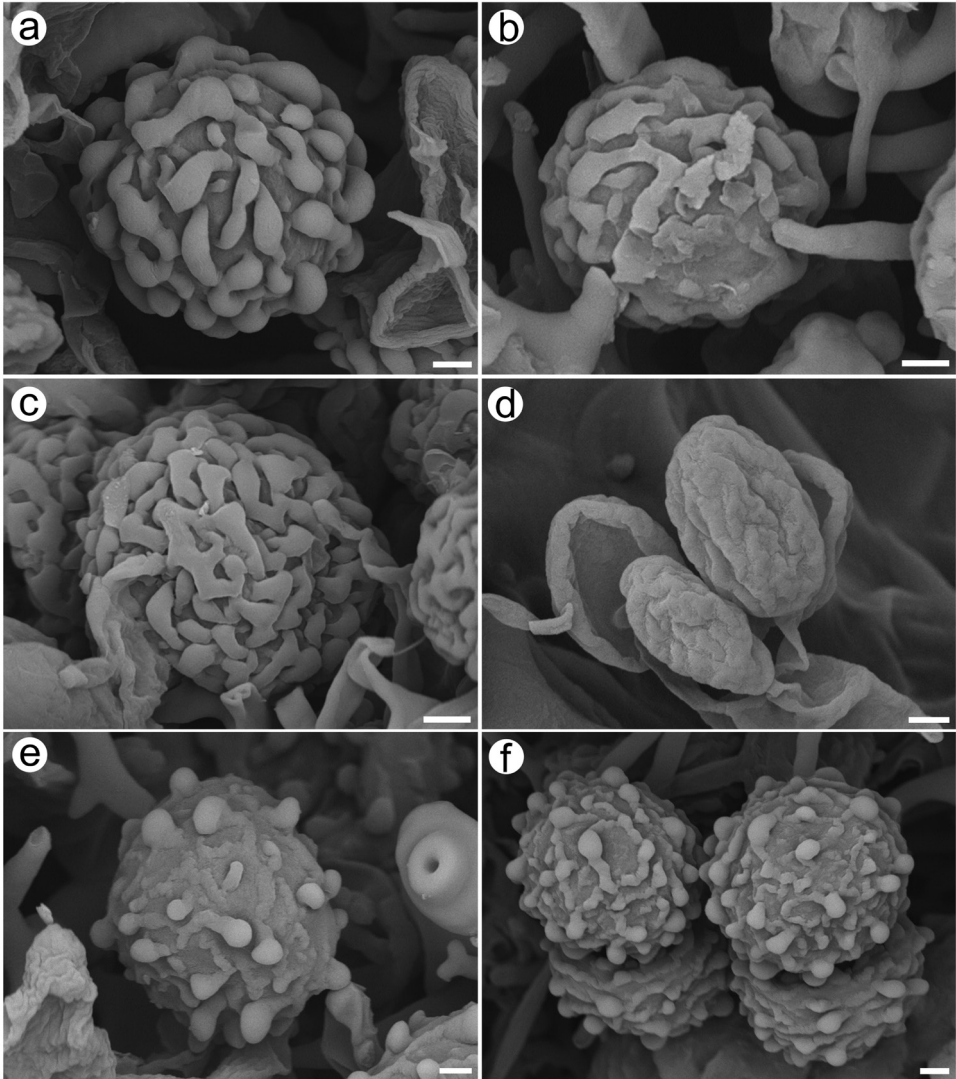


Figure 6. Scanning electron micrographs (SEM) of basidiospores of *Dichostereum*. **a** *D. austrosinense* (holotype, He 4871) **b** *D. boidinii* (holotype, He 5026) **c** *D. eburneum* (holotype, He 5374) **d** *D. granulatum* (He 1887) **e** *D. pallescens* (He 3266) **f** *D. rhodosporum* (Dai 18625A). Scale bar: 1 μ m.

Discussion

To date, 14 species of *Dichostereum* have been described worldwide including the three new species in the present paper (Boidin and Lanquetin 1980). Amongst them, 5 species, *D. brevisporum* (S.S. Rattan) Boidin & Lanq. from India, *D. kenyense*, *D. orientale* and *D. ramulosum* (Boidin & Lanq.) Boidin & Lanq. from Africa and *D. peniophoroides* from Caribbean regions, were not included in the present analyses. In order to

resolve the infra-generic phylogenetic relationships of *Dichostereum*, samples of these species and any additional undescribed taxa should be included.

The family Peniophoraceae *sensu* Larsson (2007) formed a strongly supported clade in Russulales and included about 15 genera (Larsson and Larsson 2003; Miller et al. 2006; Larsson 2007; Leal-Dutra et al. 2018). Except for the coralloid *Lachnocladium* Lév. and the insect symbiont *Entomocorticium* H.S. Whitney, Bandoni & Oberw., all the other genera in the family are corticioid fungi, such as *Asterostroma* Masee, *Peniophora* Cooke, *Scytinostroma* Donk and *Vararia*. However, recent molecular and morphological studies showed that two species of *Parapterulicium* Corner with coralloid basidiomata belong to Peniophoraceae in the Russulales rather than Pterulaceae of the Agaricales (Leal-Dutra et al. 2018). In the phylogenetic tree, the type species, *Parapterulicium subarbusculum* Corner formed a distinct lineage, while *P. octopodites* Corner is closely related to *Scytinostroma galactinum* (Fr.) Donk and its relatives. More studies on the taxonomy and phylogeny of Peniophoraceae are needed, since some large genera such as *Scytinostroma* and *Vararia* are still polyphyletic and many species are undescribed.

Acknowledgements

The authors thank Drs. Rita Rentmeester and Karen Nakasone (Center for Forest Mycology Research, Northern Research Station, U.S. Forest Service, Madison, USA) for culture and literature loan. The authors acknowledge Dr. Yu-Cheng Dai (Beijing Forestry University, China) for providing specimens. This study was supported by the National Natural Science Foundation of China (Nos. 31670013 & 31470144) and the Fundamental Research Funds for the Central Universities (No. 2017PT09).

References

- Benson DA, Cavanaugh M, Clark K, Karsch-Mizrachi I, Ostell J, Pruitt KD, Sayers EW (2018) GenBank. *Nucleic Acids Research* 46: 41–47. <https://doi.org/10.1093/nar/gkx1094>
- Bernicchia A, Gorjón SP (2010) *Fungi Europaei* 12. Corticiaceae s.l. Edizioni Candusso, Italia. 1008 pp.
- Boidin J (1967) Basidiomycètes Lachnocladiaceae résupinés de la République Centrafricaine. *Cahiers de La Maboké* 5: 23–35.
- Boidin J, Lanquetin P (1977) Les genres *Dichostereum* et *Vararia* en Guadeloupe (Basidiomycetes, Lachnocladiaceae). *Mycotaxon* 6: 277–336.
- Boidin J, Lanquetin P (1980) Contribution à l'étude du genre *Dichostereum* Pilát (Basidiomycètes, Lachnocladiaceae). *Bulletin de la Société Mycologique de France* 96: 381–406.
- Boidin J, Michel H (1998) Les genres *Vararia* et *Dichostereum* en Europe (Basidiomycotina, Lachnocladiaceae). *Bulletin de la Société Mycologique de France* 114: 1–4.
- Boidin J, Gilles G, Lanquetin P (1987) Basidiomycètes Aphylophorales de l'île de la Réunion. IX – Les genres *Dichostereum* Pilát et *Vararia* Karsten. *Bulletin de la Société Mycologique de France* 103: 119–135.

- Castresana J (2000) Selection of conserved blocks from multiple alignments for their use in phylogenetic analysis. *Molecular Biology and Evolution* 17: 540–552. <https://doi.org/10.1093/oxfordjournals.molbev.a026334>
- Dai LD, He SH (2016) New species and new records of *Aleurodiscus* s.l. (Basidiomycota) in China. *Mycological Progress* 15: 717–730. <https://doi.org/10.1007/s11557-016-1202-z>
- Dai YC (2011) A revised checklist of corticioid and hydroid fungi in China for 2010. *Mycoscience* 52(1): 69–79. <https://doi.org/10.1007/S10267-010-0068-1>
- Darriba D, Taboada GL, Doallo R, Posada D (2012) jModelTest 2: more models, new heuristics and parallel computing. *Nature Methods* 9: 772. <https://doi.org/10.1038/nmeth.2109>
- Hall TA (1999) Bioedit: a user-friendly biological sequence alignment editor and analysis program for Windows 95/98/NT. *Nucleic Acids Symposium Series* 41: 95–98.
- Hallenberg N (1985) The Lachnocladiaceae and Coniophoraceae of North Europe. *Fungiflora*, Oslo, 96 pp.
- Kearse M, Moir R, Wilson A, Stones-Havas S, Cheung M, Sturrock S, Buxton S, Cooper A, Markowitz S, Duran C, Tierer T, Ashton B, Meintjes P, Drummond A (2012) Geneious Basic: An integrated and extendable desktop software platform for the organization and analysis of sequence data. *Bioinformatics* 28(12): 1647–1649. <https://doi.org/10.1093/bioinformatics/bts199>
- Kornerup A, Wanscher JH (1978) *Methuen handbook of colour* (3rd edn). Eyre Methuen, London, 252 pp.
- Katoh K, Rozewicki J, Yamada KD (2017) MAFFT online service: multiple sequence alignment, interactive sequence choice and visualization. *Briefings in Bioinformatics*: bbx108. <https://doi.org/10.1093/bib/bbx108>
- Lanquetin P (1973) Utilisation des cultures dans la systématique des *Vararia* Karst subg. *Dichostereum* (Pilát) Boid. (Basidiomycètes Lachnocladiaceae). *Bulletin Mensuel De La Société Linnéenne De Lyon* 42(7) :167–192. <https://doi.org/10.3406/linly.1973.10071>
- Larsson E, Larsson KH (2003) Phylogenetic relationships of russuloid basidiomycetes with emphasis on aphyllorphorean taxa. *Mycologia* 95: 1037–1065. <https://doi.org/10.1080/15572536.2004.11833020>
- Larsson KH (2007) Re-thinking the classification of corticioid fungi. *Mycological Research* 111: 1040–1063. <https://doi.org/10.1016/j.mycres.2007.08.001>
- Leal-Dutra CA, Neves MA, Griffith GW, Reck MA, Clasen LA, Dentinger BTM (2018) Reclassification of *Parapterulicium* Corner (Pterulaceae, Agaricales), contributions to Lachnocladiaceae and Peniophoraceae (Russulales) and introduction of *Baltazaria* gen. nov. *MycKeys* 37: 39–56. <https://doi.org/10.3897/mycokeys.37.26303>
- Liu SL, Zhao Y, Dai YC, Nakasone KK, He SH (2017a) Phylogeny and taxonomy of *Echinodontium* and related genera. *Mycologia* 109: 568–577. <https://doi.org/10.1080/00275514.2017.1369830>
- Liu SL, Tian Y, Nie T, Thawthong A, Hyde KD, Xu LL, He SH (2017b) Updates on East Asian *Asterostroma* (Russulales, Basidiomycota): new species and new records from Thailand and China. *Mycological Progress* 16: 667–676. <https://doi.org/10.1007/s11557-017-1301-5>
- Maddison WP, Maddison DR (2018) Mesquite: a modular system for evolutionary analysis. Version 3.51. <http://www.mesquiteproject.org>

- Miller SL, Larsson E, Larsson KH, Verbeken A, Nuytinck J (2006) Perspectives in the new Russulales. *Mycologia* 98: 960–970. <https://doi.org/10.1080/15572536.2006.11832625>
- Nakasone KK, Burdsall, Jr HH (2011) The genus *Dendrothele* (Agaricales, Basidiomycota) in New Zealand. *New Zealand Journal of Botany* 49: 107–131. <https://doi.org/10.1080/0028825X.2010.512636>
- Nilsson RH, Tedersoo L, Abarenkov K, Ryberg M, Kristiansson E, Hartmann M, Schoch CL, Nylander JAA, Bergsten J, Porter TM, Jumpponen A, Vaishampayan P, Ovaskainen O, Hallenberg N, Bengtsson-Palme J, Eriksson KM, Larsson K-H, Larsson E, Kõljalg U (2012) Five simple guidelines for establishing basic authenticity and reliability of newly generated fungal ITS sequences. *MycoKeys* 4: 37–63. <https://doi.org/10.3897/mycokeys.4.3606>
- Parmasto E (1968) *Conspectus Systematis Corticiacearum*. Institutum Zoologicum et Botanicum Academiae Scientiarum R.P.S.S. Estonicae, Tartu, 261 pp.
- Parmasto E (1970) *The Lachnocladiaceae of the Soviet Union*. Academy of Sciences of the Estonian S.S.R. Institute of Zoology and Botany, Tartu, 180 pp.
- Rambaut A (2014) FigTree, a graphical viewer of phylogenetic trees. <http://tree.bio.ed.ac.uk/software/figtree/>
- Rambaut A, Drummond A, Xie D, Baele G, Suchard M (2018) Tracer v1.7. <http://beast.community/tracer>
- Rehner SA, Buckley E (2005) A *Beauveria* phylogeny inferred from nuclear ITS and EF1-alpha sequences: evidence for cryptic diversification and links to *Cordyceps* teleomorphs. *Mycologia* 97: 84–98. <https://doi.org/10.1080/15572536.2006.11832842>
- Reid DA (1965) A monograph of the stipitate stereoid fungi. *Beihefte zur Nova Hedwigia* 18: 1–382.
- Ronquist F, Teslenko M, van der Mark P, Ayres DL, Darling A, Höhna S, Larget B, Liu L, Suchard MA, Huelsenbeck JP (2012) MrBayes 3.2: Efficient Bayesian phylogenetic inference and model choice across a large model space. *Systematic Biology* 61: 539–542. <https://doi.org/10.1093/sysbio/sys029>
- Stamatakis A (2014) RAxML Version 8: A tool for phylogenetic analysis and post-analysis of large phylogenies. *Bioinformatics* 30: 1312–1313. <https://doi.org/10.1093/bioinformatics/btu033>
- Swofford DL (2003) *PAUP*: Phylogenetic analysis using parsimony (*and other methods)*. Version 4. Sinauer Associates, Sunderland, Massachusetts.
- Thiers B (continuously updated) *Index Herbariorum: A global directory of public herbaria and associated staff*. New York Botanical Garden's Virtual Herbarium. <http://sweetgum.nybg.org/ih/>
- Vilgalys R, Hester M (1990) Rapid genetic identification and mapping of enzymatically amplified ribosomal DNA from several *Cryptococcus* species. *Journal of Bacteriology* 172: 4238–4246. <https://doi.org/10.1128/jb.172.8.4238-4246.1990>
- White TJ, Bruns TD, Lee S, Taylor J (1990) Amplification and direct sequencing of fungal ribosomal RNA genes for phylogenetics. In: Innis MA, Gelfand DH, Sninsky JJ, White TJ (Eds) *PCR protocols, a guide to methods and applications*. Academic, San Diego, 315–322. <https://doi.org/10.1016/B978-0-12-372180-8.50042-1>