



Bleeding per rectum in pediatric population: A pictorial review

Karamvir Chandel, Rishabh Jain, Anmol Bhatia, Akshay Kumar Saxena, Kushaljit Singh Sodhi

Specialty type: Pediatrics

Provenance and peer review:

Invited article; Externally peer reviewed.

Peer-review model: Single blind

Peer-review report's scientific quality classification

Grade A (Excellent): A

Grade B (Very good): 0

Grade C (Good): 0

Grade D (Fair): 0

Grade E (Poor): 0

P-Reviewer: Govindarajan KK, India

Received: June 27, 2021

Peer-review started: June 27, 2021

First decision: July 30, 2021

Revised: August 9, 2021

Accepted: March 16, 2022

Article in press: March 16, 2022

Published online: May 9, 2022



Karamvir Chandel, Rishabh Jain, Anmol Bhatia, Akshay Kumar Saxena, Kushaljit Singh Sodhi, Department of Radio Diagnosis and Imaging, Post Graduate Institute of Medical Education and Research, Chandigarh 160012, India

Corresponding author: Anmol Bhatia, MBBS, MD, Associate Professor, Department of Radio Diagnosis and Imaging, Post Graduate Institute of Medical Education and Research, Sector 12, Chandigarh 160012, India. anmol_bhatia26@yahoo.co.in

Abstract

Bleeding per rectum in children can be seen in congenital as well as acquired conditions that may require medical or surgical management. The present review article is aimed to discuss the imaging findings of some common and uncommon causes of bleeding per rectum in children.

Key Words: Bleeding; Per rectum; Children; Imaging; Congenital

©The Author(s) 2022. Published by Baishideng Publishing Group Inc. All rights reserved.

Core Tip: Bleeding per rectum in children can be seen in congenital as well as acquired conditions. The referring clinicians as well the radiologists must be aware of the various radiological findings of common and uncommon causes of bleeding per rectum in children discussed in the article.

Citation: Chandel K, Jain R, Bhatia A, Saxena AK, Sodhi KS. Bleeding per rectum in pediatric population: A pictorial review. *World J Clin Pediatr* 2022; 11(3): 270-288

URL: <https://www.wjgnet.com/2219-2808/full/v11/i3/270.htm>

DOI: <https://dx.doi.org/10.5409/wjcp.v11.i3.270>

INTRODUCTION

Bleeding per rectum in children may be in the form of passage of either bright red or dark red blood (hematochezia) or black tarry stools (melena). It may occur due to congenital as well as acquired causes in the pediatric population which may require medical or surgical management.

The causes of bleeding per rectum in children across different age groups are summarized in Table 1. In the present review, we aim to discuss the imaging findings

Table 1 Causes of bleeding per rectum in children across different age groups

Up to 2 yr of age	2-5 yr	6-15 yr
Milk allergy	Polyps	Polyps
Necrotizing enterocolitis	Anal fissure	Anal fissure
Duplication cyst	Intussusception	Infectious enterocolitis
Polyps	Meckel diverticulum	Inflammatory bowel disease
Anal fissure	Infectious enterocolitis	Henoch-Schönlein purpura
Intussusception	Bleeding diathesis	Hemolytic-uremic syndrome
Hirschsprung disease related enterocolitis	Henoch-Schönlein purpura	Bleeding diathesis
Meckel diverticulum	Hemolytic-uremic syndrome	Angiodysplasia
Infectious enterocolitis	Angiodysplasia	Lymphonodular hyperplasia
Bleeding diathesis	Lymphonodular hyperplasia	Extrahepatic portal venous obstruction
	Extrahepatic portal venous obstruction	

of some common and uncommon causes of bleeding per rectum in children.

NECROTIZING ENTEROCOLITIS

Necrotizing enterocolitis (NEC) refers to acute severe inflammation of the bowel in the newborn. Its incidence ranges from 1%-5% in neonatal intensive care units[1,2]. Greater risk of NEC is noted in extreme preterm (less than 28 wk) and extremely low birth weight (birth weight less than 1000 g) babies [3]. Approximately 10% of NEC cases may be seen in term neonates with associated congenital heart diseases being the major risk factor for these patients[1,4-6].

Clinical findings vary with the severity of involvement, with feed intolerance, vomiting, hematochezia, and abdominal tenderness noted in the early stage. In advanced stages, it can lead to peritonitis, sepsis, and eventually shock.

Plain abdominal radiographs are the initial radiological investigation and the mainstay of diagnosis of NEC in an appropriate clinical setting. Both supine views and cross-table lateral views are preferred. The earliest and most common sign of NEC even before clinical findings is the loss of normal "mosaic" pattern of bowel gas in neonates along with tubular or rounded dilatation of the loops. This is seen in 90% of the neonates. The degree of dilatation and clinical severity are correlated[7]. Furthermore, persistent dilated bowel loops are an ominous sign, with the "fixed bowel loop sign" reflecting transmural bowel necrosis and imminent perforation".

In an appropriate clinical setting, the presence of intramural gas is considered a pathognomonic sign of NEC and is seen in 19%-98% of the cases[8-10] (Figure 1). Two patterns can be seen - a bubbly pattern (representing air in the submucosa) or a linear pattern of intramural gas (suggesting subserosal gas).

Portal venous gas (seen in approximately 30% of cases on X-ray) is seen as linear, branching radiolucent lines radiating from the region of the hilum towards the periphery[11,12]. It must be differentiated from pneumobilia where the gas is seen more centrally as compared to portal venous gas where it extends more peripherally[12].

In later stages, bowel perforation may occur and is seen as pneumoperitoneum which becomes an indication for surgical intervention[13] (Figure 2). Various signs have described free intraperitoneal gas in the abdomen, namely, Rigler sign (air lining the bowel wall), football sign, Cupola sign (air under the central diaphragm), inverted V sign (air outlining the lateral umbilical ligaments), *etc.* Cross table lateral views are especially valuable in detecting small amounts of interbowel gas, which is seen as a triangular lucency between the bowel walls.

Ultrasonography (USG) provides valuable information in patients with NEC in the form of bowel wall thickness and echogenicity, free intraperitoneal fluid and its character, peristalsis, and bowel wall perfusion. Few studies have shown USG to be more sensitive in depicting intramural and portal venous gas[14,15]. However, the major limitation is that it is operator dependent. Early stages of NEC show bowel wall thickening with loss of normal gut signature (the hypoechoic rim of the muscularis propria) with an increase in the wall echogenicity (Figure 3). This is accompanied by an increase in the Doppler color flow in the bowel wall in early stages. Later stages show thinning of the wall with reduced and later absent flow[14]. Free intraperitoneal fluid may be seen. The presence of low-level internal echoes/septations suggests perforation[12,13].



DOI: 10.5409/wjcp.v11.i3.270 Copyright © The Author(s) 2022.

Figure 1 Abdominal X-ray in an infant with necrotizing enterocolitis showing diffuse intramural air (arrows).



DOI: 10.5409/wjcp.v11.i3.270 Copyright © The Author(s) 2022.

Figure 2 Abdominal X-ray in an infant with necrotizing enterocolitis showing free air. The gas is seen outlining both sides of the bowel wall, *i.e.*, gas is seen within the bowel lumen as well as in the abdominal cavity. This sign is called Rigler sign and is suggestive of large amount of pneumoperitoneum.

MECKEL'S DIVERTICULUM

Meckel's diverticulum is a true diverticulum arising from the terminal ileum and is the result of persistence of the vitello-intestinal duct[16]. The lifetime risks of complications from Meckel's diverticulum are reported to be 6.4%[17], which include bleeding, diverticulitis, and intussusception.



DOI: 10.5409/wjcp.v11.i3.270 Copyright © The Author(s) 2022.

Figure 3 Ultrasound in an infant with complicated necrotizing enterocolitis showing diffusely echogenic bowel walls. In addition, free fluid (F) with internal echoes is also seen.

The risk of bleeding is more common in children than adults[18] and is due to the presence of ectopic gastric mucosa causing ulceration.

High-resolution USG shows a fluid-filled anechoic blind ending tubular structure in the right lower quadrant with a typical “gut signature”. The other non-blinding end connects to a peristaltic bowel loop.

On Tc-99m pertechnetate scintigraphy, the ectopic gastric mucosa within the diverticulum appears as a focal area of increased tracer uptake in the right iliac fossa (sensitivity, 85%; specificity, 95%). Other scintigraphy techniques like Tc-99m labeled sulfur colloid scan and RBC scan can also localize the site of LGIB, but neither is specific for Meckel’s diverticulum[19,20].

Complications of Meckel’s diverticulum like diverticulitis, bowel obstruction, and in some cases intussusceptions are very well seen on computed tomography (CT)[21]. On CT, it appears as a fluid containing blind-ending pouch with variable mural thickness and adjacent fat stranding (Figure 4). Bowel obstruction can occur in Meckel’s diverticulum secondary to intussusception, volvulus, the inclusion of diverticulum in the hernia, or foreign body impaction. Direct visualization of the diverticulum on computed tomography (CT) is difficult and features are similar to those caused by post-op adhesions, *i.e.*, dilated bowel loops with an abrupt change in caliber with the absence of soft tissue mass at the site of obstruction.

Surgical resection is the treatment of choice for symptomatic Meckel’s diverticulum. However, management in asymptomatic incidentally detected diverticulum is controversial with some authors advocating conservative approaches owing to reduced lifetime risk of complications while others support early prophylactic diverticulectomy[17,18].

RECTAL POLYPS

Colorectal polyps are an important cause of lower gastrointestinal (GI) bleeding in children and adolescents with an estimated prevalence of 12% during pediatric colonoscopy for lower GI bleeding [22]. The majority of them are juvenile hamartomatous polyps[23] and an overwhelming majority of these are solitary and sporadic not associated with malignancy[24,25]. Most of these present as painless rectal bleeding[26]. Few of them may have lower abdominal pain. Most of these are located in the rectosigmoid and thus present as fresh red blood per rectum[27]. Multiple colonic polyps have been associated with polyposis syndromes.

On abdominal radiographs, they may appear as a rounded soft tissue mass in gas-filled bowel lumen. Barium enema may show polyps as a filling defect on the dependent wall[28]. Double contrast enema

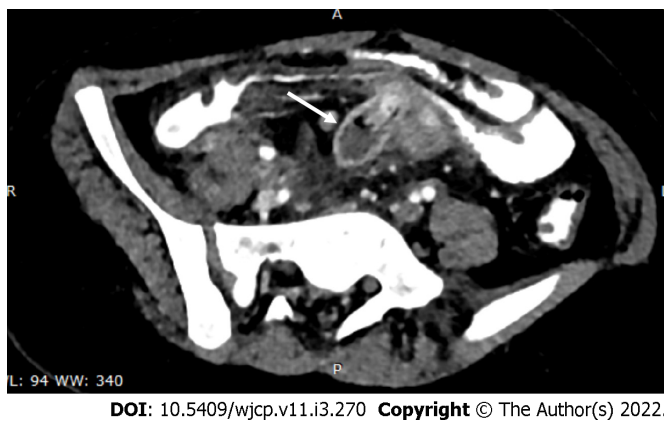


Figure 4 Axial computed tomography image showing blind ending tubular structure (arrow) in the midline in the mesentery coursing towards adjacent ileal loop suggestive of Meckel's diverticulum. Inflammation is also seen in the surrounding mesentery.

(DCE) better outlines the polyps which may be seen as ring shadow with barium coated white rim. "Bowler hat sign" on double contrast air enema refers to the appearance of sessile polyp formed by a ring of barium at the base of the polyp surrounding a domed layer of barium coating the surface of the polyp[29]. "Mexican hat sign" is the analogous appearance of pedunculation on DCE formed by pair of concentric rings with outer and inner rings representing head and stalk of polyp[28].

CT colonography with the help of advanced graphic software creates two dimensional and three dimensional images along with volumetric data of the colon[30]. Being non-invasive, it provides a virtual endoluminal image of the polyps which are seen as projections (Figure 5). Bright lumen and dark lumen techniques in magnetic resonance (MR) colonography are used to visualize the colon. In bright lumen technique, polyps are seen as hypointense filling defects in the bright lumen. In dark lumen techniques, polyps appear as enhancing soft-tissue masses against the background of dark intraluminal air/water. Dark lumen techniques have better sensitivity than bright lumen techniques[31,32].

CROHN'S COLITIS

Inflammatory bowel disease is a chronic disease of the gastrointestinal tract consisting of two separate but related entities, namely, ulcerative colitis and Crohn's disease (CD). The manifestations of CD vary depending upon the extent of the disease with isolated colonic involvement presenting similarly to UC, whereas small bowel CD presents as fever, weight loss, and fatigue more commonly than UC[33]. Symptoms of inflammatory bowel disease wax and wane, resulting in "flares" and "remission", respectively. Up to 30% of children with CD present with growth failure[34].

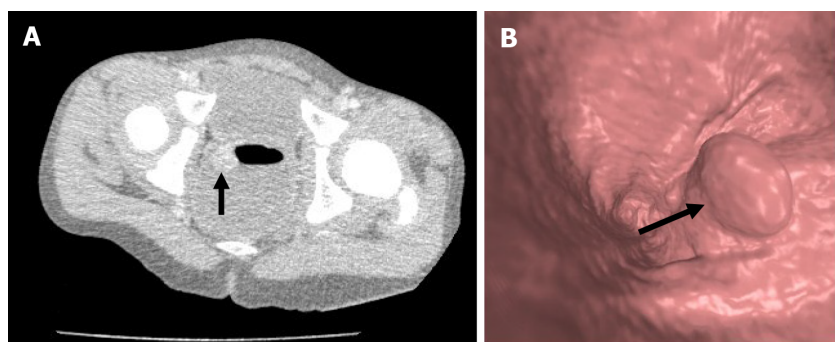
Imaging has been used to assess parts of the bowel not accessible by direct endoscopic visualization, namely, the small bowel. Fluoroscopic techniques like small bowel enteroclysis and barium meal follow-through have largely been replaced by non-invasive techniques like CT and MR enterography, which provide both mucosal and extraluminal information as well as extraintestinal manifestations.

Double contrast barium enema allows to obtain greater details of the colonic mucosa and shows irregular thickening and distortion of the valvulae conniventes, widely separated bowel loops due to fibro-fatty mesenteric proliferation and pseudo-sacculations at the ulcer site. Severe cases produce transverse and longitudinal ulcers giving rise to cobblestone appearance. Chronic cases result in multiple strictures, sinus tracts, and fistulae, which can be readily demonstrated on contrast studies.

USG has a limited role and shows predominantly bowel wall thickening with loss of mural stratification, bowel wall hyperemia, reactive mesenteric lymphadenopathy, and ascites[35]. Other complications like abscess formation and bowel obstruction can also be demonstrated on USG.

CT helps in the simultaneous assessment of extraluminal and extraintestinal complications and has emerged as one of the primary imaging modalities. Common signs of active CD include bowel wall thickening (> 3 mm) and mucosal hyperenhancement[36,37]. These are the most common and sensitive findings of CD[38,39]. Increased vascularity in form of "comb sign" (Figure 6) refers to increased vascularity of the distal mesenteric arterial arcades and the vasa recta of the affected ascending colon and small bowel and is a sign of active inflammation[40]. Perienteric fat stranding and engorged vasa recta are the most specific signs of active CD on CT enterography[41]. Chronic CD produces "creeping fat sign" due to fibrofatty proliferation. Complications like strictures, bowel obstruction, fistula formation, and an intra-abdominal abscess can also be readily demonstrated.

MR enterography offers the advantage of radiation free modality and is of utmost importance in the pediatric population. It is specifically the modality of choice for better evaluation of perianal disease and better distinction of acute disease from chronic disease. Findings on MR enterography such as bowel



DOI: 10.5409/wjcp.v11.i3.270 Copyright © The Author(s) 2022.

Figure 5 Axial contrast enhanced computed tomography colonoscopy image. A: in a child with bleeding per rectum showing an enhancing polypoidal soft tissue (arrow) suggestive of a rectal polyp, as well as endoluminal colonoscopy image B: in another child showing a rectal polyp (arrow).



DOI: 10.5409/wjcp.v11.i3.270 Copyright © The Author(s) 2022.

Figure 6 Axial contrast enhanced computed tomography image in a child with Crohn's disease showing mesenteric fat proliferation with increased vascularity (white arrow) with mural thickening and enhancement in the adjacent bowel loop (black arrow).

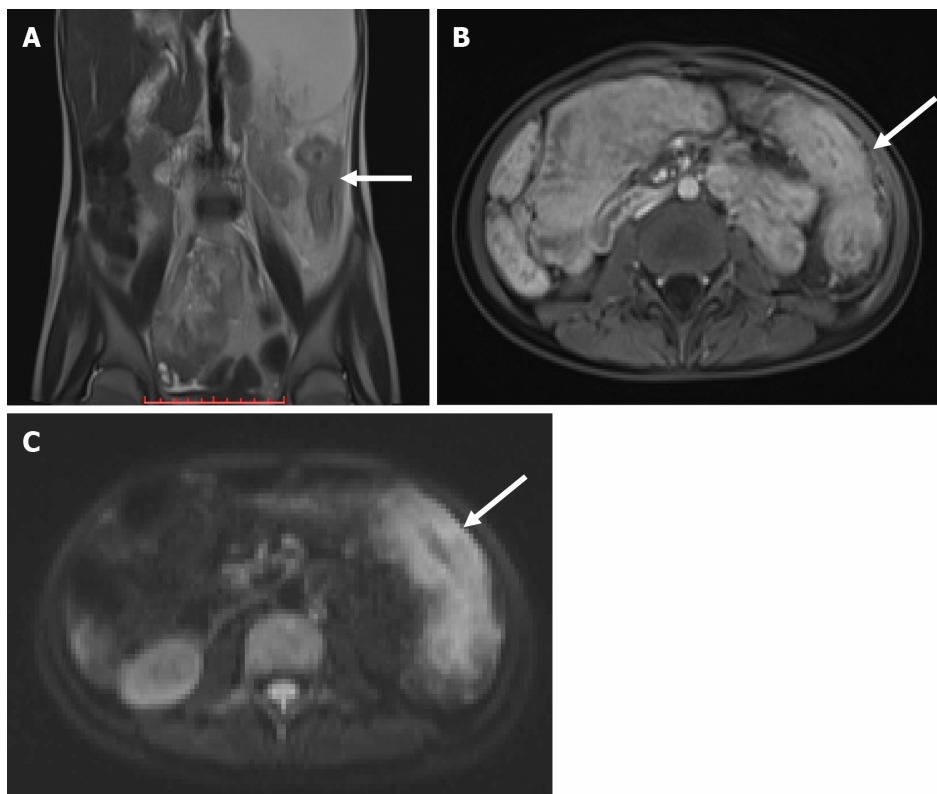
wall thickening, mucosal hyperenhancement, mural stratification, and perienteric fat stranding denote active disease (Figure 7A and B). Chronic fibrotic CD shows hypointense signal on T2 weighted images. Diffusion weighted imaging is unique and shows restricted diffusion with low apparent diffusion coefficient values in active disease[42](Figure 7C). Strictures are better evaluated on MR enterography due to its dynamic bowel examination in time and CINE imaging[39]. Perianal fistulas and other enterocutaneous fistulas appear as enhancing tracts best visualized on post-contrast fat-saturated T1 weighted sequences[43,44] (Figure 8).

MIDGUT VOLVULUS

Midgut volvulus occurs due to intestinal malrotation. In malrotation, due to abnormal 270° counter-clockwise rotation of the midgut around the superior mesenteric artery (SMA) axis, an abnormally long, narrow mesenteric pedicle is present from the ligament of Trietz to the ileocaecal valve and is more susceptible for midgut volvulus. It usually presents with bilious vomiting due to proximal small bowel obstruction, but occasionally bloody stools may be seen secondary to intestinal ischemia.

Plain abdominal radiographs show a paucity of bowel gases beyond the stomach and the duodenum and colonic gas if present is seen in the left hemi-abdomen.

Upper GI contrast studies are the preferred imaging tests for a suspected case. Typical findings on fluoroscopy include a corkscrew appearance of the duodenum with it not crossing the midline and duodeno-jejunal (DJ) flexure present on the right, below the level of the pylorus and to the right of the left pedicle of L1 vertebra[45](Figure 9).



DOI: 10.5409/wjcp.v11.i3.270 Copyright © The Author(s) 2022.

Figure 7 Diffusion weighted imaging. A: Coronal T2 weighted magnetic resonance image showing long segment mural thickening in the descending colon (arrow in A) which is showing post contrast enhancement in post contrast T1 image (arrow in B) and intense diffusion restriction in diffusion weighted image (arrow in C) suggestive of active disease.

On USG, the superior mesenteric vein (SMV) is present to the left of the SMA[46]; however, the absence of this finding does not rule out malrotation[47,48]. On color Doppler images, twisting or wrapping of the SMV and the mesentery around the SMA in a clockwise direction is suggestive of whirlpool sign (Figure 10). It has a sensitivity, specificity, and positive predictive value of 92%, 100%, and 100%, respectively[46].

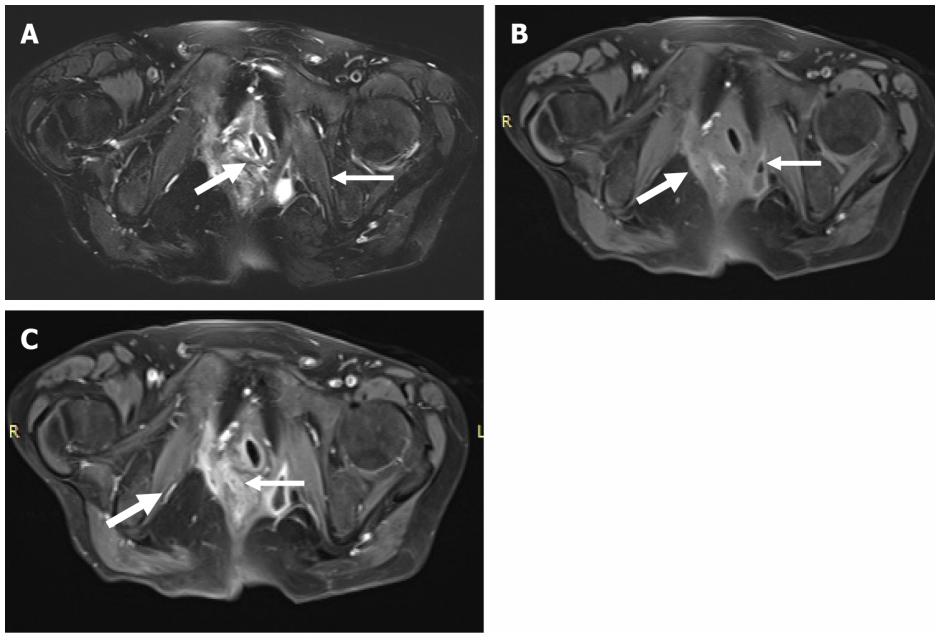
On CT and magnetic resonance imaging (MRI) at the site of volvulus, swirling of mesenteric vessels may be seen[49] (Figures 11 and 12). There is abnormally positioned duodenum, DJ flexure, cecum (in the left upper quadrant), and the large bowel (the majority of colonic loops in the right hemiabdomen) along with distention of the proximal duodenum and the stomach.

EXTRA-HEPATIC PORTAL VEIN OBSTRUCTION (EHPVO)

Extra-hepatic portal vein obstruction (EHPVO) is an important and common cause of non-cirrhotic portal hypertension (HTN). It is characterized by chronic thrombosis of the main portal vein, with or without intrahepatic portal vein, splenic vein, and SMV involvement with portal vein cavernoma formation. It is a disorder of children and young adults. In developing countries in the Asian region, it is the most common cause of portal HTN and upper GI bleeding in the pediatric population. Hypercoagulable state, infections, inflammation, portal venous anomalies, and perinatal umbilical vein catheterization are the most common etiologies; however, 70% of cases are idiopathic[50-52].

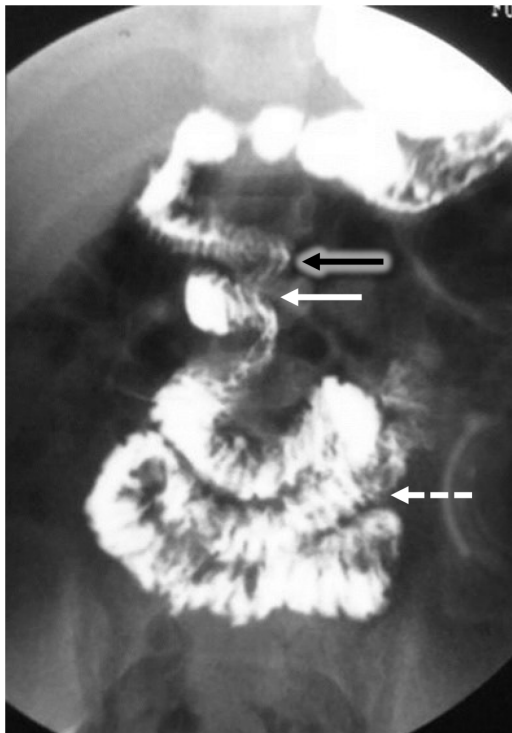
Clinically, these patients present with upper GI variceal bleeding with the associated feature of hypersplenism. Portal cavernous cholangiopathy (PCC) is seen in approximately 70%-100% of cases. Only 5%-28% of these are symptomatic due to biliary obstruction leading to intrahepatic biliary radical dilatation (IHBRD), choledocholithiasis, and hepatolithiasis[50,52]. Lower GI bleeding is rare with EHPVO (seen in 0.5%-10% of cases), but this is usually torrential and life-threatening. Anorectal varices (63%-95% of cases) and colopathy (approximately 54% of cases), secondary to increased portal venous pressure, are the two main causes for lower GI bleed in these patients[53]. Isolated inferior mesenteric vein portal hypertension secondary to EHPVO has been reported[54].

USG along with Doppler is usually the first investigation in a suspected case of EHPVO. The portal vein is not visualized and is replaced with multiple tortuous vascular channels suggestive of cavernoma formation. Depending on the extent of portal vein involvement, both intra- and extra-hepatic cavernoma



DOI: 10.5409/wjcp.v11.i3.270 Copyright © The Author(s) 2022.

Figure 8 Magnetic resonance image pelvis images in a child with Crohn's disease. A and B: T2 weighted fat suppressed and pre contrast T1 weighted images showing a fistulous tract (thick arrow in A and B) on the right side communicating with the rectum in the midline. In addition, a small collection (thin arrow in A and B) with air focus is seen in the left ischio-rectal fossa; C: Post contrast T1 weighted fat suppressed image showing enhancement of the tract (thick arrow) as well as peripheral enhancement of the collection (thin arrow).

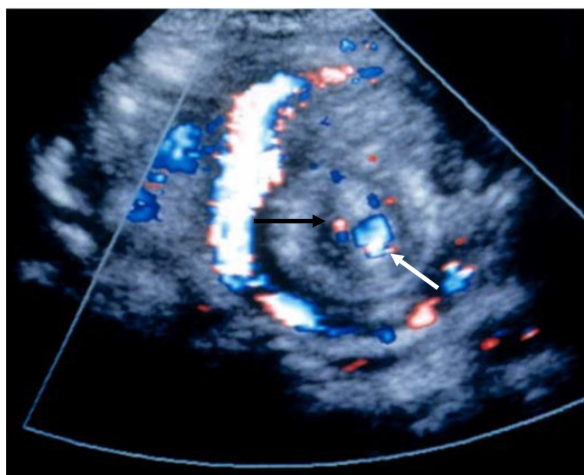


DOI: 10.5409/wjcp.v11.i3.270 Copyright © The Author(s) 2022.

Figure 9 Contrast study showing low lying duodenojejunal flexure (black arrow) with cork-screw appearance (solid white arrow) suggestive of malrotation with volvulus. The proximal jejunal loops (dashed white arrow) are seen in the midline and on the right side instead of the left side.

formation can be seen. Monophasic hepatopetal flow is noted in the collaterals. Pericholecystic collaterals are seen in approximately 30- 50% of cases. In patients with PCC, IHBRD, hepatolithiasis, and choledocholithiasis may be seen[50-52].

CT demonstrates vascular, biliary, and visceral changes. However, it is not routinely performed in children with EHPVO.



DOI: 10.5409/wjcp.v11.i3.270 Copyright © The Author(s) 2022.

Figure 10 Color Doppler image showing whirlpool sign due to rotation of the superior mesenteric vein (white arrow) along with bowel loops around the superior mesenteric artery (black arrow) suggestive of malrotation with midgut volvulus.



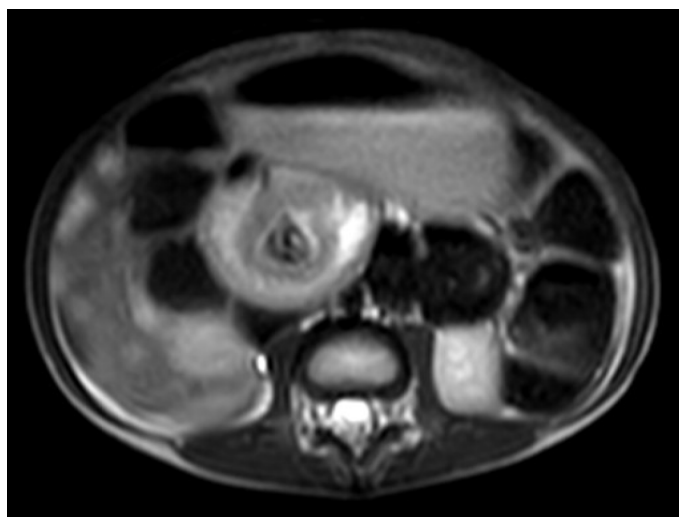
DOI: 10.5409/wjcp.v11.i3.270 Copyright © The Author(s) 2022.

Figure 11 Axial contrast enhanced computed tomography image showing whirlpool sign due to rotation of the superior mesenteric vein (white arrow) along with bowel loops around the superior mesenteric artery (black arrow) suggestive of malrotation with midgut volvulus.

Magnetic resonance cholangiopancreatography (MRCP) and MR portovenography provide valuable information regarding the biliary and splenoportal axis, respectively (Figure 13). MRI features suggestive of PCC include irregular wavy contour of bile ducts, biliary duct narrowing and strictures with or without dilatation, gall bladder and bile duct wall thickening, CBD angulation, hepatolithiasis and cholelithiasis, and choledocholithiasis. Paracholedochal and pericholecystic collaterals (Figure 14) are seen as enhancing tortuous collaterals causing smooth extrinsic impressions on bile duct[50,52]. MRI also demonstrates the presence of intra-splenic siderotic nodules (Gamna-Gandy bodies), which denotes long standing portal hypertension.

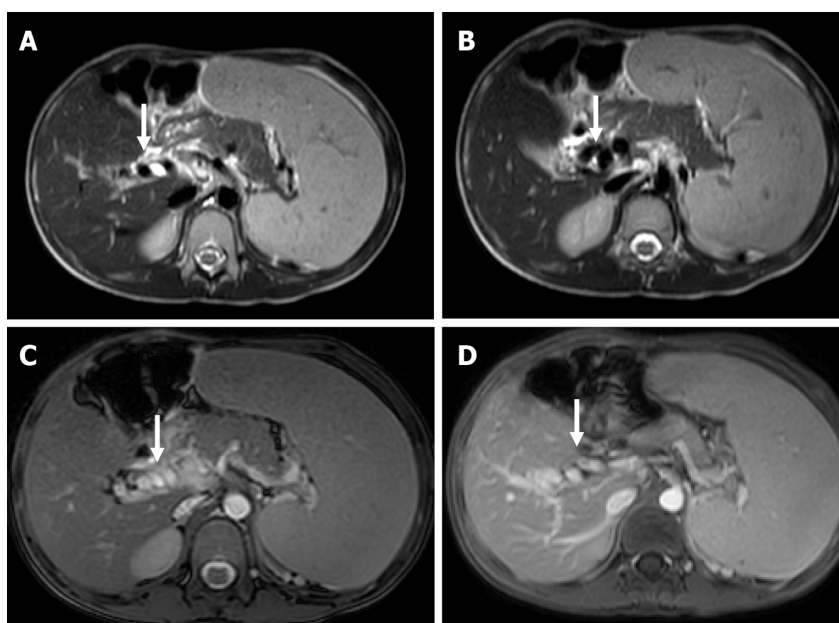
DUPLICATION CYST

Duplication cysts are a rare gastrointestinal tract developmental anomaly with an incidence of approximately 0.2% of all children and are most commonly seen in infancy. They may be contained within the gastrointestinal tract or lie outside to it and are usually seen on the mesenteric side. They are either cystic (80%) or tubular (20%). The ileum, esophagus, and colon are the common sites. Histologically, they show GI epithelial inner lining and smooth muscle outer layer. Presentation is variable and usually



DOI: 10.5409/wjcp.v11.i3.270 Copyright © The Author(s) 2022.

Figure 12 Axial T2 weighted magnetic resonance image showing whirlpool sign suggestive of malrotation with midgut volvulus.



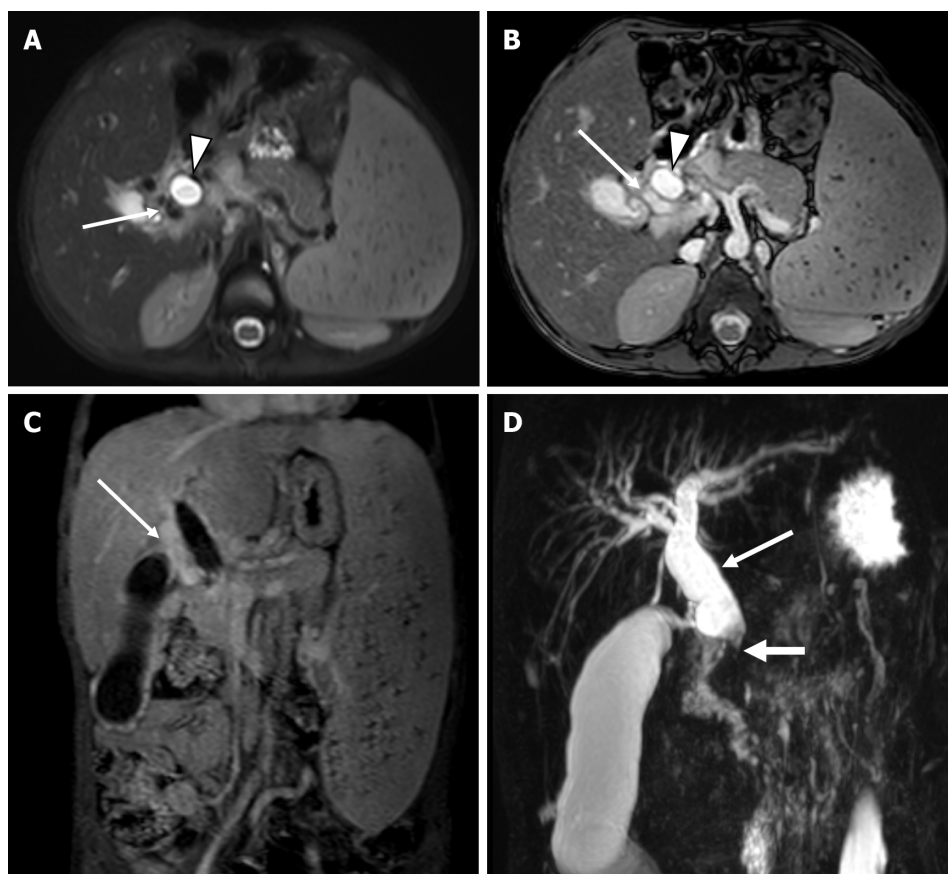
DOI: 10.5409/wjcp.v11.i3.270 Copyright © The Author(s) 2022.

Figure 13 A 7-year-old boy with extra-hepatic portal vein obstruction. A and B: Axial T2W images showing non visualized main portal vein with multiple collaterals (arrow) along the course of the portal vein; C and D: Axial BTFE and post-contrast T1 images show multiple collaterals (arrow) replacing the main portal vein at the porta. In addition, splenomegaly is also seen.

depends on location, size and mass effect, and complications. It may present as vomiting, abdominal distention, bleeding, abdominal mass, and increased urinary frequency and hesitancy. The cysts may be complicated by perforation and can act as a lead point for intussusception, volvulus, and bowel obstruction. GI bleeding occurs primarily because of ulceration of the gastric mucosa, intussusception, or pressure necrosis[55-58].

On USG, these are seen as well-defined anechoic lesions that demonstrate a classic gut signature (in about 50% of cases), *i.e.*, mucosal internal echogenic layer and muscular outer hypoechoic layer (Figure 15). This appearance is usually interrupted, due to non-uniform thickness[56]. USG appearance may vary in cases with hemorrhage. Barium contrast studies although not routinely used, may demonstrate a sub-mucosal filling defect with a mass effect on the gastrointestinal tract or rarely communicating with it[56].

On CT, a duplication cyst is seen as a well-defined non-enhancing mass with cystic attenuation adjacent to the GI tract (Figure 16). However, the central attenuation may vary, depending on hemorrhage or proteinaceous material, which usually show higher central attenuation[56] MRI will show a well-defined cystic lesion with heterogeneous signal density on T1 weighted image and T2



DOI: 10.5409/wjcp.v11.i3.270 Copyright © The Author(s) 2022.

Figure 14 Portal cavernoma cholangiopathy. A and B: Axial T2 weighted and axial BTFE magnetic resonance images show dilated CBD [arrowhead] with multiple pericholedochal collaterals [white arrow]; C: Coronal post-contrast T1 image shows multiple enhancing pericholedochal collaterals [white arrow]; D: Massive splenomegaly. Thick slab coronal magnetic resonance cholangiopancreatography image shows dilated and tortuous CBD (thin arrow) with abrupt cut-off at the lower end (thick arrow).

homogenous high signal intensity[55].

RECTAL HEMANGIOMA

Gastrointestinal hemangiomas are benign vascular tumors. They are most commonly seen in pediatric and young adults where they present as GI bleeding in about 80% of cases and are a cause of life-threatening anemia. Most commonly are seen in the small bowel. They are also seen in the colon and rectum. They may be seen as part of Klippel-Trénaunay, Maffucci, blue rubber bleb nevus syndrome, and disseminated neonatal hemangiomatosis. Histologically, they can be of cavernous, capillary, and mixed type with the cavernous variety being the most common subtype[59-61].

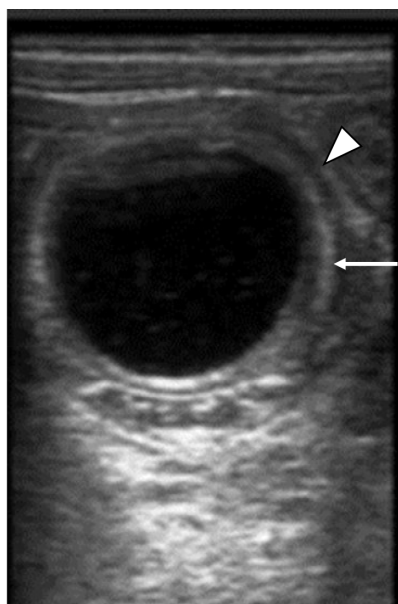
Plain radiograph being the first routine investigation may show phleboliths (evident in 50% of cases) along the course of the bowel. Extensive phleboliths are rare in young and this gives a clue for further investigations[59,60].

CT scan provides an intramural and extramural extension of the lesion. On CT, the involved bowel shows asymmetric bowel wall thickening with contrast enhancement. Phleboliths may or may not be seen[60] (Figure 17).

MRI shows rectal wall thickening, increased T2 signal intensity, and prominent perirectal serpiginous vascular channels. The perirectal vascular channels and atypical location help to differentiate rectal hemangiomas from hemorrhoids.

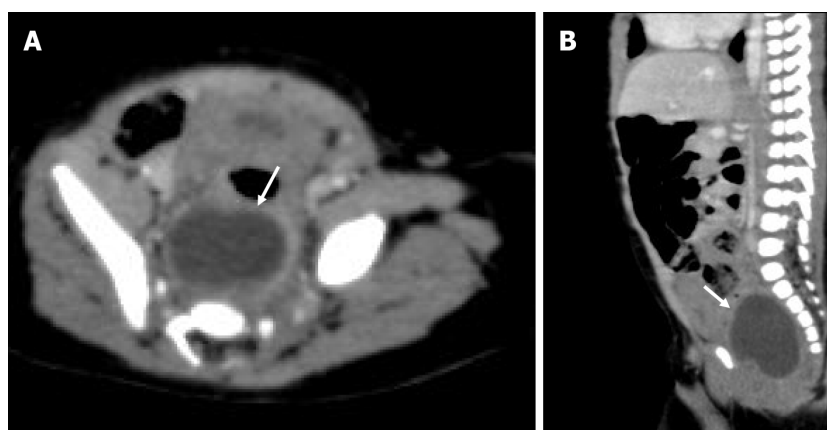
INTUSSUSCEPTION

Intussusception refers to telescoping of a bowel segment (intussusceptum) into the distal segment (intussusciptions). It is among the most common abdominal emergencies in the pediatric age group with most cases (approximately 80%) occurring between 6 mo to 2 years of age[62-64]. It is also one of the



DOI: 10.5409/wjcp.v11.i3.270 Copyright © The Author(s) 2022.

Figure 15 Gray-scale ultrasonography image shows a well-defined anechoic lesion showing a classic gut signature with inner echogenic mucosa (arrow) and outer hypoechoic muscularis propria.



DOI: 10.5409/wjcp.v11.i3.270 Copyright © The Author(s) 2022.

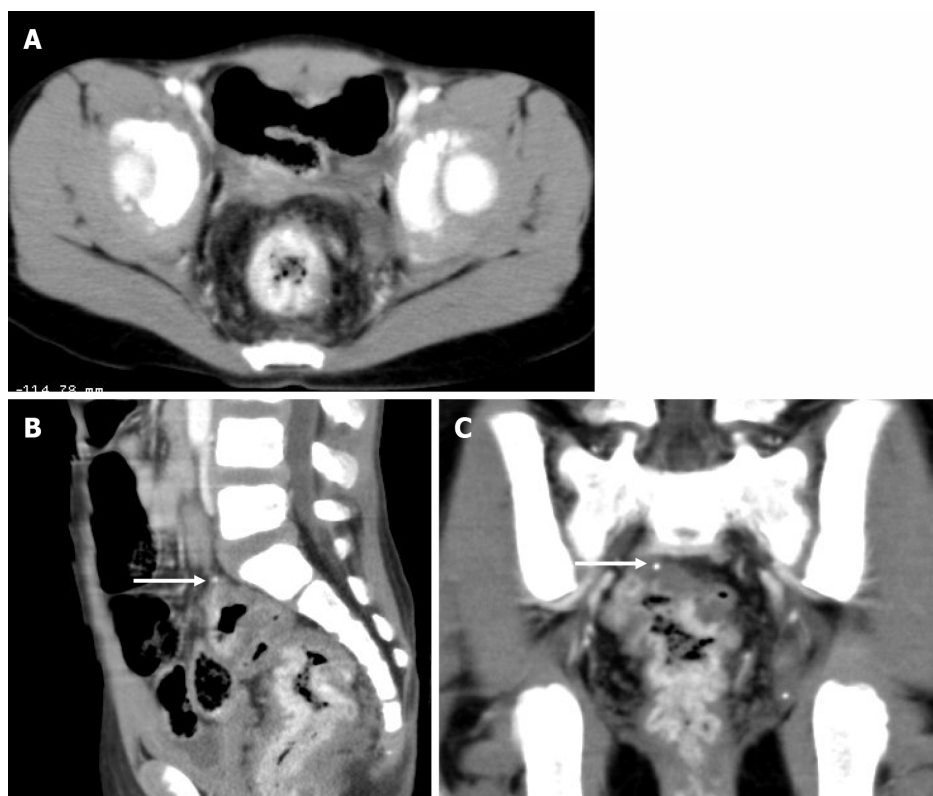
Figure 16 Rectal duplication cyst. A and B: Axial and sagittal contrast enhanced computed tomography images show a well-defined cystic structure in the presacral space pushing the rectum (arrow) anteriorly.

most common causes of small bowel obstruction in infants[63]. The clinical triad of acute abdominal pain, palpable abdominal mass, and currant jelly stools/hematochezia is noted only in 50% of patients [62]. Ileo-colic is the most common type, where an ileum segment invaginates across IC junction into the colon for variable length[64].

Many radiographic signs of intussusception have been described, which include soft tissue density mass in the right upper quadrant, gasless abdomen, small bowel obstruction, and meniscus sign (Figure 18). X-rays usually are the initial investigation and are primarily used to look for obstruction and perforation and to rule out any other causes of pain abdomen. On barium enema, the meniscus sign and the coiled spring sign are the classic signs explained in intussusception[62].

Ultrasound has a high sensitivity (98%-100%) and specificity (88%-100%) for diagnosis of intussusception. Multiple concentric ring sign and crescent in doughnut sign are seen on axial scans (Figure 19). On longitudinal scans, sandwich and hayfork signs are explained[65](Figure 20). The intussusciens contains the entering limb and the returning limb of the intussusceptum, along with the mesentery. This gives variable ultrasound features depending on the length of the involved segment.

Most cases of intussusception are idiopathic. However, duplication cyst, polyps, tumor, or Meckel's diverticulum can act as a lead point and are more common in neonates or older children. USG is very sensitive in picking up and characterization of lead points[62,65](Figure 21).



DOI: 10.5409/wjcp.v11.i3.270 Copyright © The Author(s) 2022.

Figure 17 An 8-year-old girl with bleeding per rectum. Axial (A), sagittal (B), and coronal (C) contrast enhanced computed tomography images showing diffuse rectal wall thickening with intense contrast enhancement. A tiny phlebolith is also seen (arrows in B and C). Findings are suggestive of rectal hemangioma.

Under real time fluoroscopy, uncomplicated ileocolonic and colocolonic intussusceptions can be reduced using barium enema, water-soluble contrast agents, and pneumatic reduction[62] (Figure 22).

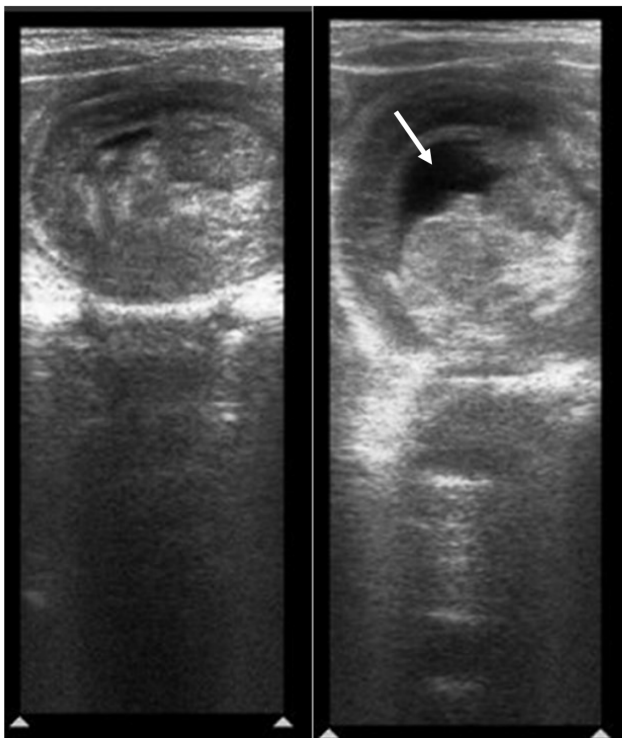
CONCLUSION

To conclude, bleeding per rectum in children can occur due to a variety of medical and surgical causes across the different age groups. The referring clinicians as well as the radiologists must be aware of the various radiological findings of common and uncommon causes of bleeding per rectum in children, which may require medical and surgical management at the time of presentation.



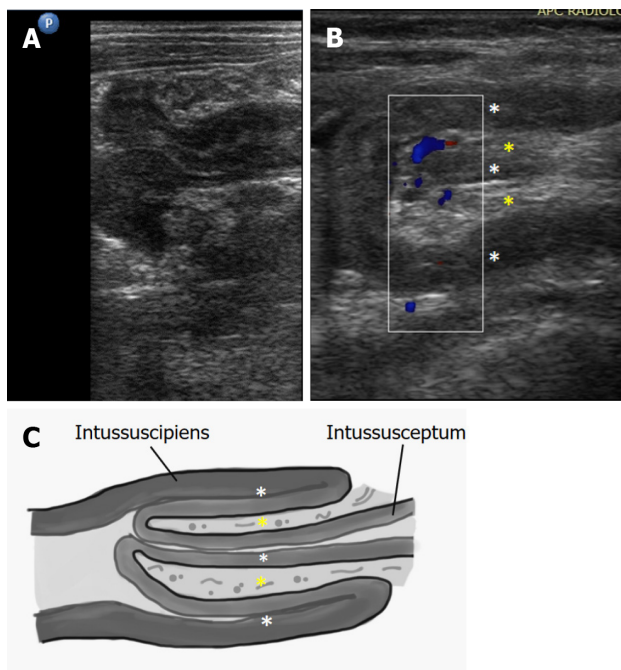
DOI: 10.5409/wjcp.v11.i3.270 Copyright © The Author(s) 2022.

Figure 18 Abdominal X-ray in a child with intussusception showing a gasless abdomen with meniscus of air outlining a soft tissue opacity (intussusceptum) in upper abdomen (arrow).



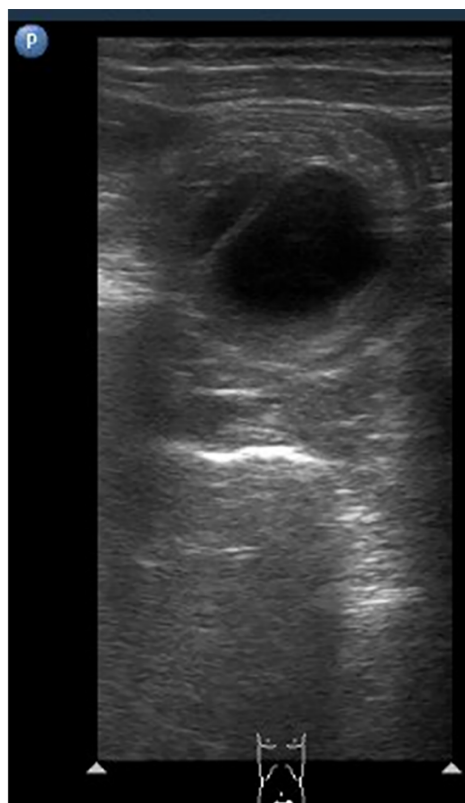
DOI: 10.5409/wjcp.v11.i3.270 Copyright © The Author(s) 2022.

Figure 19 Ultrasound image shows multiple concentric rings suggestive of intussusception. Minimal trapped fluid is also seen (arrow).



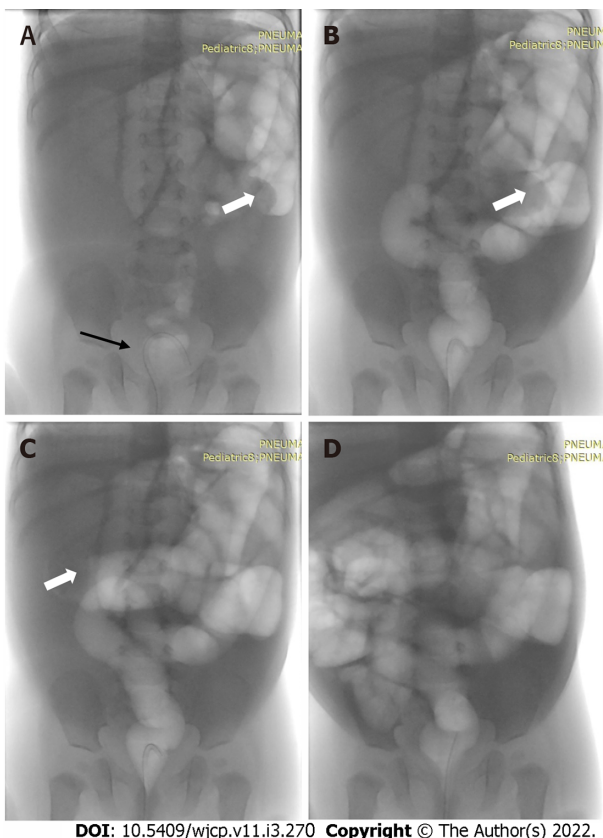
DOI: 10.5492/wjcp.v11.i3.270 Copyright © The Author(s) 2022.

Figure 20 Longitudinal ultrasound images of ileo-colic intussusception. A: Outer intussusciens and inner intussusceptum; B and C: Both show three hypoechoic lines (white asterisks) separating the two echogenic areas (yellow asterisks) giving sandwich sign/hay-fork sign. Longitudinal ultrasound images are important to delineate the length of the involved bowel segment.



DOI: 10.5409/wjcp.v11.i3.270 Copyright © The Author(s) 2022.

Figure 21 Ultrasound image shows cystic structure at the apex of the intussusceptum as the pathological lead point. Differentials include duplication cyst and Meckel's diverticulum.



DOI: 10.5409/wjcp.v11.i3.270 Copyright © The Author(s) 2022.

Figure 22 Pneumatic reduction of intussusception under fluoroscopy. A: The patient is positioned supine with a feeding tube within the rectum (black arrow); B and C: The intussusceptum is seen in the left hypochondrium (open arrow) given by the meniscus sign; subsequent spots after air inflation show that the intussusceptum has moved proximally, as well as reflux of air in the small bowel after successful reduction (D) of the intussusception.

ACKNOWLEDGEMENTS

We thank Dr. Bhujade H, Assistant Professor, Department of Radiodiagnosis and Imaging, Postgraduate Institute of Medical Education and Research, Sector-12, Chandigarh, 160012, India for designing the diagrammatic image for Figure 20.

FOOTNOTES

Author contributions: Bhatia A, Saxena AK, and Sodhi KS designed the research study; Chandel K, Jain R, and Bhatia A performed the research; Chandel K, Jain R, and Bhatia A wrote the manuscript; Bhatia A, Saxena AK, and Sodhi KS edited the manuscript; all authors have read and approved the final manuscript.

Conflict-of-interest statement: The authors have no conflicts of interest to declare.

Open-Access: This article is an open-access article that was selected by an in-house editor and fully peer-reviewed by external reviewers. It is distributed in accordance with the Creative Commons Attribution NonCommercial (CC BY-NC 4.0) license, which permits others to distribute, remix, adapt, build upon this work non-commercially, and license their derivative works on different terms, provided the original work is properly cited and the use is non-commercial. See: <http://creativecommons.org/licenses/by-nc/4.0/>

Country/Territory of origin: India

ORCID number: Karamvir Chandel 0000-0002-7175-5203; Rishabh Jain 0000-0003-0281-3569; Anmol Bhatia 0000-0003-4630-5742; Akshay Kumar Saxena 0000-0002-9184-5687; Kushaljit Singh Sodhi 0000-0001-6419-2468.

S-Editor: Wang LL

L-Editor: Wang TQ

P-Editor: Qi WW

REFERENCES

- 1 **Stoll BJ.** Epidemiology of necrotizing enterocolitis. *Clin Perinatol* 1994; **21**: 205-218 [PMID: 8070222]
- 2 **Ballance WA, Dahms BB, Shenker N, Kliegman RM.** Pathology of neonatal necrotizing enterocolitis: a ten-year experience. *J Pediatr* 1990; **117**: S6-13 [PMID: 2362230 DOI: 10.1016/s0022-3476(05)81124-2]
- 3 **Rowe MI, Reblock KK, Kurkchubasche AG, Healey PJ.** Necrotizing enterocolitis in the extremely low birth weight infant. *J Pediatr Surg* 1994; **29**: 987-90; discussion 990 [PMID: 7965535 DOI: 10.1016/0022-3468(94)90264-x]
- 4 **Martinez-Tallo E, Claire N, Bancalari E.** Necrotizing enterocolitis in full-term or near-term infants: risk factors. *Biol Neonate* 1997; **71**: 292-298 [PMID: 9167850 DOI: 10.1159/000244428]
- 5 **Bolisetty S, Lui K, Oei J, Wojtulewicz J.** A regional study of underlying congenital diseases in term neonates with necrotizing enterocolitis. *Acta Paediatr* 2000; **89**: 1226-1230 [PMID: 11083380 DOI: 10.1080/080352500750027619]
- 6 **Lee JS, Polin RA.** Treatment and prevention of necrotizing enterocolitis. *Semin Neonatol* 2003; **8**: 449-459 [PMID: 15001117 DOI: 10.1016/S1084-2756(03)00123-4]
- 7 **Epelman M, Daneman A, Navarro OM, Morag I, Moore AM, Kim JH, Faingold R, Taylor G, Gerstle JT.** Necrotizing Enterocolitis: Review of State-of-the-Art Imaging Findings with Pathologic Correlation. *RadioGraphics March* 2007; **27**: 285-305 [DOI: 10.1148/rg.272055098]
- 8 **Leonidas JC, Hall RT, Amoury RA.** Critical evaluation of the roentgen signs of neonatal necrotizing enterocolitis. *Ann Radiol (Paris)* 1976; **19**: 123-132 [PMID: 988775]
- 9 **Pochaczewsky R, Kassner EG.** Necrotizing enterocolitis of infancy. *Am J Roentgenol Radium Ther Nucl Med* 1971; **113**: 283-296 [PMID: 4938604 DOI: 10.2214/ajr.113.2.283]
- 10 **Robinson AE, Grossman H, Brumley GW.** Pneumatosis intestinals in the neonate. *Am J Roentgenol Radium TherNucl Med* 1974; **120**: 333-341 [DOI: 10.2214/ajr.120.2.333]
- 11 **Bell RS, Graham CB, Stevenson JK.** Roentgenologic and clinical manifestations of neonatal necrotizing enterocolitis. Experience with 43 cases. *Am J Roentgenol Radium TherNucl Med* 1971; **112**: 123-134 [DOI: 10.2214/ajr.112.1.123]
- 12 **Kirks DR, O'Byrne SA.** The value of the lateral abdominal roentgenogram in the diagnosis of neonatal hepatic portal venous gas (HPVG). *Am J Roentgenol Radium TherNucl Med* 1974; **122**: 153-158 [DOI: 10.2214/ajr.122.1.153]
- 13 **Buonomo C.** The radiology of necrotizing enterocolitis. *Radiologic clinics of North America* 1999; **37**: 1187-1198 [DOI: 10.1016/s0033-8389(05)70256-6]
- 14 **Faingold R, Daneman A, Tomlinson G, Babyn PS, Manson DE, Mohanta A, Moore AM, Hellmann J, Smith C, Gerstle T, Kim JH.** Necrotizing enterocolitis: assessment of bowel viability with color doppler US. *Radiology* 2005; **235**: 587-594 [PMID: 15858098 DOI: 10.1148/radiol.2352031718]
- 15 **Kim WY, Kim WS, Kim IO, Kwon TH, Chang W, Lee EK.** Sonographic evaluation of neonates with early-stage necrotizing enterocolitis. *Pediatr Radiol* 2005; **35**: 1056-1061 [PMID: 16078076 DOI: 10.1007/s00247-005-1533-4]
- 16 **Levy AD, Hobbs CM.** From the archives of the AFIP. Meckel diverticulum: radiologic features with pathologic Correlation. *Radiographics* 2004; **24**: 565-587 [PMID: 15026601 DOI: 10.1148/rg.242035187]
- 17 **Cullen JJ, Kelly KA, Moir CR, Hodge DO, Zinsmeister AR, Melton 3rd LJ.** Surgical management of Meckel's diverticulum. An epidemiologic, population-based study. *Annals of surgery* 1994; **220**: 564 [DOI: 10.1097/0000658-199410000-00014]
- 18 **Sagar J, Kumar V, Shah DK.** Meckel's diverticulum: a systematic review. *J R Soc Med* 2006; **99**: 501-505 [PMID: 17021300 DOI: 10.1258/jrsm.99.10.501]
- 19 **Cooney DR, Duszynski DO, Camboa E, Karp MP, Jewett TC Jr.** The abdominal technetium scan (a decade of experience). *J Pediatr Surg* 1982; **17**: 611-619 [PMID: 6294268 DOI: 10.1016/s0022-3468(82)80121-8]
- 20 **Sfakianakis GN, Conway JJ.** Detection of ectopic gastric mucosa in Meckel's diverticulum and in other aberrations by scintigraphy: ii. indications and methods-a 10-year experience. *J Nucl Med* 1981; **22**: 732-738 [PMID: 6267233]
- 21 **Paulsen SR, Huprich JE, Fletcher JG, Booya F, Young BM, Fidler JL, Johnson CD, Barlow JM, Earnest F 4th.** CT enterography as a diagnostic tool in evaluating small bowel disorders: review of clinical experience with over 700 cases. *Radiographics* 2006; **26**: 641-57; discussion 657 [PMID: 16702444 DOI: 10.1148/rg.263055162]
- 22 **Thakkar K, Fishman DS, Gilger MA.** Colorectal polyps in childhood. *Curr Opin Pediatr* 2012; **24**: 632-637 [PMID: 22890064 DOI: 10.1097/MOP.0b013e328357419f]
- 23 **Thakkar K, Alsarraj A, Fong E, Holub JL, Gilger MA, El Serag HB.** Prevalence of colorectal polyps in pediatric colonoscopy. *Dig Dis Sci* 2012; **57**: 1050-1055 [PMID: 22147243 DOI: 10.1007/s10620-011-1972-8]
- 24 **Adolph VR, Bernabe K.** Polyps in children. *Clin Colon Rectal Surg* 2008; **21**: 280-285 [PMID: 20011439 DOI: 10.1055/s-0028-1089943]
- 25 **Nugent KP, Talbot IC, Hodgson SV, Phillips RK.** Solitary juvenile polyps: not a marker for subsequent malignancy. *Gastroenterology* 1993; **105**: 698-700 [PMID: 8395444 DOI: 10.1016/0016-5085(93)90885-g]
- 26 **Campbell AM, Sugarman I.** Does painless rectal bleeding equate to a colonic polyp? *Arch Dis Child* 2017; **102**: 1049-1051 [PMID: 28550146 DOI: 10.1136/archdischild-2016-311245]
- 27 **Lee BG, Shin SH, Lee YA, Wi JH, Lee YJ, Park JH.** Juvenile polyp and colonoscopic polypectomy in childhood. *Pediatr Gastroenterol Hepatol Nutr* 2012; **15**: 250-255 [PMID: 24010095 DOI: 10.5223/pghn.2012.15.4.250]
- 28 **Laufer I, Levine MS.** Principles of double contrast diagnosis. Double contrast gastrointestinal radiology, Philadelphia: Saunders, 1992: 9-54 [DOI: 10.1016/b978-1-4160-2332-6.50009-9]
- 29 **Miller WT, Levine MS, Rubesin SE, Laufer I.** Bowler-hat sign: a simple principle for differentiating polyps from diverticula. *Radiology* 1989; **173**: 615-617 [DOI: 10.1148/radiology.173.3.2813762]
- 30 **Vining DJ, Gelfand DW.** Noninvasive colonoscopy using helical CT scanning, 3D reconstruction, and virtual reality. Presented at the 23rd Annual Meeting and Postgraduate Course of the Society of Gastrointestinal Radiologists. *Maui HI* 1994; **127**: 310-316 [DOI: 10.1016/0363-8235(80)90045-9]
- 31 **Luboldt W, Steiner P, Bauerfeind P, Pelkonen P, Debatin JF.** Detection of mass lesions with MR colonography: preliminary report. *Radiology* 1998; **207**: 59-65 [DOI: 10.1148/radiology.207.1.9530299]

- 32 **Lauenstein TC**, Ajaj W, Kuehle CA, Goehde SC, Schlosser TW, Ruehm SG. Magnetic resonance colonography: comparison of contrast-enhanced three-dimensional vbe with two-dimensional FISP sequences: preliminary experience. *Invest Radiol* 2005; **40**: 89-96 [PMID: [15654253](#) DOI: [10.1097/01.rli.0000149489.56736.39](#)]
- 33 **Mekhhjian HS**, Switz DM, Melnyk CS, Rankin GB, Brooks RK. Clinical features and natural history of Crohn's disease. *Gastroenterology* 1979; **77**: 898-906 [DOI: [10.1016/0016-5085\(79\)90389-5](#)]
- 34 **Motil KJ**, Grand RJ, Davis-Kraft L, Ferlic LL, Smith EO. Growth failure in children with inflammatory bowel disease: a prospective study. *Gastroenterology* 1993; **105**: 681-691 [PMID: [8359640](#) DOI: [10.1016/0016-5085\(93\)90883-e](#)]
- 35 **Fraquelli M**, Colli A, Casazza G, Paggi S, Colucci A, Massironi S, Duca P, Conte D. Role of US in detection of Crohn disease: meta-analysis. *Radiology* 2005; **236**: 95-101 [PMID: [15987966](#) DOI: [10.1148/radiol.2361040799](#)]
- 36 **Booya F**, Fletcher JG, Huprich JE, Barlow JM, Johnson CD, Fidler JL, Solem CA, Sandborn WJ, Loftus EV Jr, Harmsen WS. Active Crohn Disease: CT Findings and Interobserver Agreement for Enteric Phase CT Enterography. *Radiology* 2006; **241**: 787-795 [DOI: [10.1148/radiol.2413051444](#)]
- 37 **Choi D**, Jin Lee S, Ah Cho Y, Lim HK, Hoon Kim S, Jae Lee W, Hoon Lim J, Park H, Rae Lee Y. Bowel wall thickening in patients with Crohn's disease: CT patterns and correlation with inflammatory activity. *Clin Radiol* 2003; **58**: 68-74 [PMID: [12565208](#) DOI: [10.1053/crad.2002.1068](#)]
- 38 **Goldberg HI**, Gore RM, Margulis AR, Moss AA, Baker EL. Computed tomography in the evaluation of Crohn disease. *AJR Am J Roentgenol* 1983; **140**: 277-282 [PMID: [6600342](#) DOI: [10.2214/ajr.140.2.277](#)]
- 39 **Wallihan DB**, Towbin AJ, Denson LA, Salisbury S, Podberesky DJ. Inflammatory bowel disease in children and adolescents: assessing the diagnostic performance and interreader agreement of magnetic resonance enterography compared to histopathology. *Acad Radiol* 2012; **19**: 819-826 [PMID: [22520509](#) DOI: [10.1016/j.acra.2012.02.023](#)]
- 40 **Lee SS**, Ha HK, Yang SK, Kim AY, Kim TK, Kim PN, Lee MG, Myung SJ, Jung HY, Kim JH, Min YI. CT of prominent pericolic or perienteric vasculature in patients with Crohn's disease: correlation with clinical disease activity and findings on barium studies. *AJR Am J Roentgenol* 2002; **179**: 1029-1036 [PMID: [12239060](#) DOI: [10.2214/ajr.179.4.1791029](#)]
- 41 **Bodily KD**, Fletcher JG, Solem CA, Johnson CD, Fidler JL, Barlow JM, Bruesewitz MR, McCollough CH, Sandborn WJ, Loftus EV Jr, Harmsen WS, Crownhart BS. Crohn Disease: mural attenuation and thickness at contrast-enhanced CT Enterography--correlation with endoscopic and histologic findings of inflammation. *Radiology* 2006; **238**: 505-516 [PMID: [16436815](#) DOI: [10.1148/radiol.2382041159](#)]
- 42 **Oto A**, Zhu F, Kulkarni K, Karczmar GS, Turner JR, Rubin D. Evaluation of diffusion-weighted MR imaging for detection of bowel inflammation in patients with Crohn's disease. *Acad Radiol* 2009; **16**: 597-603 [PMID: [19282206](#) DOI: [10.1016/j.acra.2008.11.009](#)]
- 43 **Koelbel G**, Schmiedl U, Majer MC, Weber P, Jenss H, Kueper K, Hess CF. Diagnosis of fistulae and sinus tracts in patients with Crohn disease: value of MR imaging. *AJR Am J Roentgenol* 1989; **152**: 999-1003 [PMID: [2705359](#) DOI: [10.2214/ajr.152.5.999](#)]
- 44 **Essary B**, Kim J, Anupindi S, Katz JA, Nimkin K. Pelvic MRI in children with Crohn disease and suspected perianal involvement. *Pediatr Radiol* 2007; **37**: 201-208 [PMID: [17180366](#) DOI: [10.1007/s00247-006-0372-2](#)]
- 45 **Dunn EA**, Olsen OE, Huisman TA. The Pediatric Gastrointestinal Tract: What Every Radiologist Needs to Know. In Diseases of the Abdomen and Pelvis Springer, Cham, 2018: 157-166 [DOI: [10.1007/978-3-319-75019-4_15](#)]
- 46 **Shimanuki Y**, Aihara T, Takano H, Moritani T, Oguma E, Kuroki H, Shibata A, Nozawa K, Ohkawara K, Hirata A, Imaizumi S. Clockwise whirlpool sign at color Doppler US: an objective and definite sign of midgut volvulus. *Radiology* 1996; **199**: 261-264 [DOI: [10.1148/radiology.199.1.8633156](#)]
- 47 **Peterson CM**, Anderson JS, Hara AK, Carenza JW, Menias CO. Volvulus of the gastrointestinal tract: appearances at multimodality imaging. *Radiographics* 2009; **29**: 1281-1293 [PMID: [19755596](#) DOI: [10.1148/rg.295095011](#)]
- 48 **Applegate KE**, Anderson JM, Klatte EC. Intestinal malrotation in children: a problem-solving approach to the upper gastrointestinal series. *Radiographics* 2006; **26**: 1485-1500 [PMID: [16973777](#) DOI: [10.1148/rg.265055167](#)]
- 49 **Fisher JK**. Computed tomographic diagnosis of volvulus in intestinal malrotation. *Radiology* 1981; **140**: 145-146 [PMID: [7244217](#) DOI: [10.1148/radiology.140.1.7244217](#)]
- 50 **Arora A**, Sarin SK. Multimodality imaging of primary extrahepatic portal vein obstruction (EHPVO): what every radiologist should know. *Br J Radiol* 2015; **88**: 20150008 [PMID: [26111208](#) DOI: [10.1259/bjr.20150008](#)]
- 51 **Weiss B**, Shteyer E, Vivante A, Berkowitz D, Reif S, Weizman Z, Bujanover Y, Shapiro R. Etiology and long-term outcome of extrahepatic portal vein obstruction in children. *World J Gastro* 2010; **16**: 4968 [DOI: [10.3748/wjg.v16.i39.4968](#)]
- 52 **Pargewar SS**, Desai SN, Rajesh S, Singh VP, Arora A, Mukund A. Imaging and radiological interventions in extra-hepatic portal vein obstruction. *World J Radiol* 2016; **8**: 556-570 [PMID: [27358683](#) DOI: [10.4329/wjr.v8.i6.556](#)]
- 53 **Khanna R**, Sarin SK. Non-cirrhotic portal hypertension-diagnosis and management. *J hepat* 2014; **60**: 421-441 [DOI: [10.1016/j.jhep.2013.08.013](#)]
- 54 **Prasad GR**, Billa S, Bhandari P, Hussain A. Isolated inferior mesenteric portal hypertension with giant inferior mesenteric vein and anomalous inferior mesenteric vein insertion. *Journal of Indian Association of Pediatric Surgeons* 2013; **18**: 84 [DOI: [10.4103/0971-9261.109362](#)]
- 55 **Liu R**, Adler DG. Duplication cysts: Diagnosis, management, and the role of endoscopic ultrasound. *Endosc Ultrasound* 2014; **3**: 152-160 [PMID: [25184121](#) DOI: [10.4103/2303-9027.138783](#)]
- 56 **Tong SC**, Pitman M, Anupindi SA. Best cases from the AFIP. Ileocecal enteric duplication cyst: radiologic-pathologic correlation. *Radiographics* 2002; **22**: 1217-1222 [PMID: [12235349](#) DOI: [10.1148/radiographics.22.5.g02se221217](#)]
- 57 **Sharma S**, Yadav AK, Mandal AK, Zaheer S, Yadav DK, Samie A. Enteric duplication cysts in children: A clinicopathological dilemma. *J Clin Diagnostic Res* 2015; **9**: EC08-EC11 [DOI: [10.7860/jcdr/2015/12929.6381](#)]
- 58 **Flynn-O'Brien KT**, Rice-Townsend S, Ledbetter DJ. Structural anomalies of the gastrointestinal tract. In: Avery's Diseases of the Newborn Elsevier, Philadelphia, PA, 2018: 1039-1053 [DOI: [10.1016/b978-0-323-40139-5.00071-1](#)]
- 59 **Dachman H**, Buck L, Shekitka KM, Olmsted W, Hinton CB. Colorectal Hemangioma: Radiologic Findings. *Radiology* 1988; **167**: 31-34 [DOI: [10.1148/radiology.167.1.3347741](#)]

- 60 **Yoo S.** GI-Associated Hemangiomas and Vascular Malformations. *Clin Colon Rectal Surg* 2011; **24**: 193-200 [PMID: 22942801 DOI: 10.1055/s-0031-1286003]
- 61 **Han EC,** Kim SH, Kim HY, Jung SE, Park KW. Gastrointestinal hemangioma in childhood: a rare cause of gastrointestinal bleeding. *Korean J Pediatr* 2014; **57**: 245-249 [PMID: 25045368 DOI: 10.3345/kjp.2014.57.5.245]
- 62 **del-Pozo G,** Albillos JC, Tejedor D, Calero R, Rasero M, de-la-Calle U, López-Pacheco U. Intussusception in children: current concepts in diagnosis and enema reduction. *Radiographics* 1999; **19**: 299-319 [PMID: 10194781 DOI: 10.1148/radiographics.19.2.g99mr14299]
- 63 **Jiang J,** Jiang B, Parashar U, Nguyen T, Bines J, Patel MM. Childhood intussusception: a literature review. *PLoS One* 2013; **8**: e68482 [PMID: 23894308 DOI: 10.1371/journal.pone.0068482]
- 64 **Lioubashevsky N,** Hiller N, Rozovsky K, Segev L, Simanovsky N. Ileocolic vs small-bowel intussusception in children: can US enable reliable differentiation? *Radiology* 2013; **269**: 266-271 [PMID: 23801771 DOI: 10.1148/radiol.13122639]
- 65 **Verschelden P,** Filiatrault D, Garel L, Grignon A, Perreault G, Boisvert J, Dubois J. Intussusception in children: reliability of US in diagnosis--a prospective study. *Radiology* 1992; **184**: 741-744 [PMID: 1509059 DOI: 10.1148/radiology.184.3.1509059]



Published by **Baishideng Publishing Group Inc**
7041 Koll Center Parkway, Suite 160, Pleasanton, CA 94566, USA

Telephone: +1-925-3991568

E-mail: bpgoffice@wjgnet.com

Help Desk: <https://www.f6publishing.com/helpdesk>

<https://www.wjgnet.com>

