


 Cite this: *RSC Adv.*, 2020, 10, 22176

Coupling hydrophilic interaction chromatography materials with immobilized Fe³⁺ for phosphopeptide and glycopeptide enrichment and separation†

 Yue Zhang,^{‡b} Jiyong Li,^{‡c} Yuanhang Yu,^b Rong Xie,^b Han Liao,^b Bo Zhang^{*b} and Jianying Chen^{†a}

Simultaneous profiling of protein phosphorylation and glycosylation is very important to elucidate the bio-functions of these proteins. However, simultaneous enrichment of glyco- and phosphopeptides is the bottleneck in proteomics because of the low abundance of these species and ion suppression from non-modified peptides in mass spectrometry (MS). In this study, Fe³⁺ immobilized hydrophilic interaction chromatography (HILIC) materials (termed polySD-SiO₂, recently reported in our lab) and polySD-SiO₂ in the HILIC mode were employed for the simultaneous enrichment and subsequent separation of glyco- and phosphopeptides. The Fe³⁺ immobilized polySD-SiO₂ could selectively enrich glycopeptides and phosphopeptides and the co-enriched peptides were further fractionated with polySD-SiO₂ in the HILIC mode. With the established method, glyco- and phosphopeptides were well enriched and divided into two fractions even from tryptic digests of α -casein, fetuin and BSA at a molar ratio of 1 : 2 : 400. Application of the established method to HeLa cell lysate resulted in a total of 1903 phosphopeptides and 141 glycosylation sites. These results demonstrate that the established method could selectively and simultaneously enrich and fractionate glyco- and phosphopeptides from complex peptide mixtures.

 Received 4th February 2020
 Accepted 24th May 2020

DOI: 10.1039/d0ra01048k

rsc.li/rsc-advances

1. Introduction

Protein phosphorylation and glycosylation are two types of most significant post-translational modification (PTM), which take part in the regulation of many vital biological processes.¹ Reversible protein phosphorylation modulates cellular processes such as cell cycle and signaling.² Protein glycosylation is related to tumor invasion and metastasis, cell adhesion, and immune response.³ The terminals of glycans in glycoproteins are often modified with sialic acids (SAs).^{4,5} Increasing evidence shows the increased expression of sialylated glycoproteins on the surface of tumor cells.⁶ Changes in the level of sialylation interplay with alternation in phosphorylation.^{7,8} Therefore, to further elucidate these biological processes of protein phosphorylation and glycosylation at the molecular level, it is very

essential to simultaneously profile these two kinds of PTMs in biological and clinical samples.

Mass spectrometry (MS) is the method of choice for profiling protein phosphorylation and glycosylation. However, enrichment of PTM-peptides is always required prior to MS analysis owing to the low abundance of PTM-peptides in complex samples and ion suppression effect resulting from non-modified peptides in MS. Therefore, continuous efforts have been endeavored to enrich individual subset of PTM-peptides in order to reduce the complexity of samples. The commonly used methods toward phosphopeptide enrichment include immobilized metal ion affinity chromatography (IMAC),⁹ metal oxide affinity chromatography (representative with TiO₂ and ZrO₂),^{10,11} and hydrophilic interaction chromatography (HILIC).¹² Meanwhile, lectin affinity chromatography,^{13,14} TiO₂ (ref. 15–17) and HILIC^{18,19} have been used for glycopeptide enrichment. During the last decade, HILIC materials have made tremendous progress and widely applied to enrich glycopeptides in the form of Carbon-based materials,²⁰ polymers²¹ and ZIC-HILIC.^{22,23}

In recent years, several materials have been developed and applied to simultaneous enrichment of phosphopeptides and glycopeptides. These materials include metal oxide affinity chromTiO₂/TiO₂ (ref. 17, 24 and 25) derivatives, IMAC^{26,27} and HILIC.^{26,28,29} Even though these materials could be used to

^aDepartment of Gastrointestinal Surgery, Union Hospital, Tongji Medical College, Huazhong University of Science and Technology, Wuhan 430022, China

^bDepartment of Breast and Thyroid Surgery, Union Hospital, Tongji Medical College, Huazhong University of Science and Technology, Wuhan 430022, China. E-mail: union.bzhang@aliyun.com
^cDepartment of Breast and Thyroid Surgery, Huangpi People's Hospital, Jiangnan University, Wuhan 430300, China

† Electronic supplementary information (ESI) available. See DOI: 10.1039/d0ra01048k

‡ These authors contributed equally to this work.



simultaneously capture both phosphopeptides and glycopeptides, these two PTM-peptides are co-eluted from materials, which are still very complex to be analysed with MS. To reduce the complexity of the samples, the second dimensional separation has been employed with HILIC columns or reverse phase liquid chromatography. For example, phosphopeptides and glycopeptides were enriched with TiO_2 ; After the treatment of PNGase F overnight, phosphopeptides and the deglycosylated peptides were subsequently fractionated with HILIC.^{30,31} However, phosphopeptides and the deglycosylated peptides could be found in each HILIC fraction. The severe overlap of phosphopeptides and deglycosylated peptides in HILIC originates from the insufficient hydrophilicity differences between PTMs peptides. Moreover, removal of glycans is carried out under basic condition overnight, which leads to hydrolyze of co-existing phosphopeptides. Thus, it will be ideal that phosphopeptides are separated from intact glycopeptides before the deglycosylation step.

In our previous study, we synthesized bioinspired polymers Ser-Asp (SD) modified silica (denoted as polySD-SiO₂) to enrich glycopeptides.³² In this article, we incorporated iron ions onto polySD-SiO₂ materials and used Fe³⁺ immobilized polySD-SiO₂ to simultaneously enrich phosphopeptides and glycopeptides. Then the co-enriched PTM-peptides were further separated into phosphopeptides and intact glycopeptides fractions with polySD-SiO₂ under HILIC mode (Scheme 1). This method was validated with the tryptic digests of the phosphoprotein, glycoprotein and non-modified protein and even HeLa S3 cell lysate.

2. Experimental

2.1 Materials and reagents

Bovine fetuin, a-casein and bovine serum albumin (BSA), ammonium bicarbonate (NH_4HCO_3), glycolic acid, guanidine hydrochloride, dl-dithiothreitol (DTT), iodoacetamide (IAA), and peptide *N*-Glycosidase F (PNGase F) were obtained from Sigma-Aldrich (St. Louis, MO, USA). Sequencing grade trypsin was

purchased from Promega (Madison, WI, USA). Trifluoroacetic acid (TFA) was obtained from TEDIA (Fairfield, USA). Acetonitrile (ACN) was purchased from Merck (Darmstadt, Germany). Acetic acid and formic acid (FA) was obtained from Acros Organics (Geel, Belgium). Ammonium hydroxide was purchased from Fluka (Buchs, Switzerland). GELoader tips were purchased from Eppendorf (Madison, WI). Water was prepared with a Milli-Q system (Millipore, Bedford, MA, USA).

2.2 Synthesis and characterization of Fe³⁺ immobilized polySD-SiO₂

The previously prepared polySD-SiO₂ (500 mg) were suspended in water and washed twice with 1 mL 50 mM EDTA in 1 M NaCl. After centrifugation, the supernatant was removed and the remaining materials were incubated with 1 mL 0.1 M FeCl₃ in 0.1 M acetic acid. After incubation of 1 h, the suspension was centrifuged and the pellet was subsequently washed with 1 mL 1 M NaCl and 0.1 M acetic acid. After washing with water, the materials were dried under 60 °C. X-ray photoelectron spectroscopy (XPS) was obtained with a VG Multilab 2000. Scanning electron microscopy (SEM) spectra were recorded on a Hitachi S-4800 SEM.

2.3 Trypsin digestion of proteins

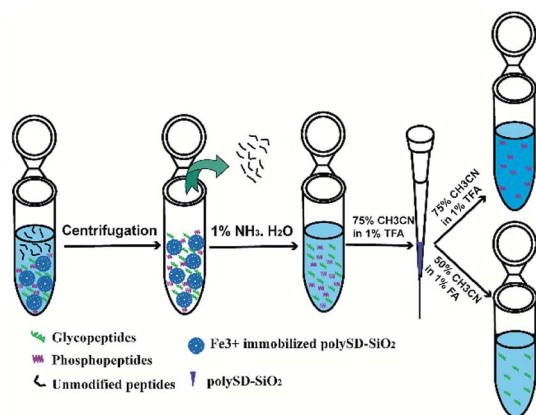
Each standard protein (1 mg) was dissolved in 100 μL of 6 M guanidine hydrochloride/50 mM ammonium bicarbonate. The denatured protein solution was reduced with 5 μL of 200 mM DTT/50 mM ammonium bicarbonate for 45 min at 56 °C. Free sulfhydryl groups were alkylated with 20 μL of 200 mM IAA/25 mM ammonium bicarbonate and followed by incubation for 30 min at room temperature in the dark. The solution was diluted to 1 mL with 25 mM ammonium bicarbonate, mixed with trypsin at an enzyme/protein ratio of 1 : 20 (w/w) and incubated overnight at 37 °C. The digestion was stopped by adding 10% formic acid at the final concentration of 1%.

2.4 Enrichment of phosphopeptides and glycopeptides with Fe³⁺ immobilized polySD-SiO₂

Fe³⁺ immobilized polySD-SiO₂ (2.0 mg) was slurried in 40 μL of ACN and pushed into a GELoader tip. The micro-column was equilibrated with 40 μL of loading buffer (80% ACN/5% TFA). The tryptic peptide mixture was dried, redissolved in 40 μL loading buffer and loaded onto the Fe³⁺ immobilized polySD-SiO₂ packed micro-column. The absorbed peptides were washed twice with 40 μL of 80% ACN/5% TFA, and eluted with 40 μL of 1.0% ammonium hydroxide. The elution fraction was immediately acidified with 1% FA.

2.5 Separation of phosphopeptides and glycopeptides with PolySD-SiO₂

PolySD-SiO₂ packed micro-column was used to separate phosphopeptides from glycopeptides. Elution fraction from Fe³⁺ immobilized polySD-SiO₂ was dried and redissolved in 40 μL of 80% ACN/5% TFA. For micro-column packing, 40 μL of ACN slurry/the PolySD-SiO₂ (2.0 mg) was packed into the GELoader



Scheme 1 The process of simultaneous enrichment and subsequent separation of phosphopeptides and glycopeptides with Fe³⁺ immobilized polySD-SiO₂ and polySD-SiO₂.

tip. After washing with 40 μL of 50% ACN/0.1% FA, the micro-column was equilibrated with 40 μL of 80% ACN/5% TFA. Then, the peptides were loaded onto the column and the flow-through was collected. The micro-column were rinsed twice with 40 μL of 80% ACN/5% TFA and eluted with 40 μL of 50% ACN/1% TFA. The phosphopeptides were obtained by pooling the flow-through and eluant from 80% ACN/5% TFA. The glycopeptides fraction resulting from 50% ACN/1% TFA was dried and redissolved in 40 μL of 50 mM NH_4HCO_3 . After addition of 2 unit of PNGase F to glycopeptides solution, the solution was incubated overnight at 37 $^\circ\text{C}$.

HeLa cells culture, protein extraction and protein digestion were carried out by using the reported methods.³² The phosphopeptides and glycopeptides were enriched with the above-mentioned method.

2.6 Enrichment and separation of phosphopeptides and glycopeptides with the reported method

For the simultaneous enrichment of phosphopeptides and glycopeptides, TiO_2 based method was applied as described previously.³¹ The eluates from TiO_2 were deglycosylated with 2 unit of PNGase F. After deglycosylation, the peptides were desalted and subsequently subjected to HILIC micro-column packed with TSKGel Amide materials (3 μm particle size, Tosoh Bioscience). The micro-column were eluted with 40 μL of 75% ACN/0.1% TFA and eluted with 40 μL of 50% ACN/0.1% TFA, respectively.

2.7 Validating the established method

To investigate the recovery of the established method, stable isotope dimethyl labeling protocol was followed.³⁴ The standard monophosphopeptide (peptide sequence: HpSPIAPSSPSPK, p: phosphorylation site), diphosphopeptide (peptide sequence: HpSPIApSSPSPK, p: phosphorylation site) and a glycopeptide (peptide sequence: KVANKT, N: glycosylation site) were used in this experiments. Each standard peptide was dissolved in sodium acetate buffer (0.1 M, pH 6) and mixed with formaldehyde (4% in water, 1 μL) and formaldehyde-D2 (4% in water, 1 μL), separately. After vortex for 5 min, the solution was then mixed immediately with freshly prepared sodium cyanoborohydride (260 mM, 1 μL). The mixture was vortexed again and then allowed to react for 5 min. After the stable isotope dimethyl labeling, the heavily labeled standard peptides were treated with the established. Before the treated samples were injected for MS analysis, the same amount of lightly labeled standard peptides was mixed with the treated samples. The recovery was calculated based on the intensity of lightly and heavily labeled standard peptides.

2.8 MS analysis and data searching

The peptide fractions from digests of standard samples were characterized with nano electrospray ionization (ESI)-quadrupole time-of-flight (Q-TOF) tandem mass spectrometer (Waters, Manchester, UK). Modified peptides from HeLa S3 cell lysate were analyzed by LTQ Orbitrap Velos (Thermo, San Jose, CA) with Accela 600 HPLC system (Thermo,

San Jose, CA). The peptides were loaded on a C18 capillary trap column (150 μm i.d. \times 4 cm) packed with C18 AQ beads (5 μm , 120 \AA) by a void capillary as previous described. The peptides were separated on analytical column (75 μm i.d. \times 15 cm) packed with C18 AQ beads (3 μm , 120 \AA). The mobile phases for separation were 0.1% FA in water and 0.1% FA in ACN, the flow rate was 200 nL min^{-1} for LC-MS/MS analysis. The gradient from 5 to 35% (v/v) ACN was performed in 150 min. The MS and MS/MS spectra were collected by CID at 35% energy in a data dependent mode that 1 MS scan from 400 to 1850 m/z with the mass resolution of 60 000 at m/z 400 in the Orbitrap analyzer followed with 20 MS/MS scans in the ion trap, respectively. The dynamic exclusion repeat count was 1 with duration time of 30 s, the exclusion list size was 500 with exclusion time of 60 s, and the charge state rejection function was enabled, with single and "unassigned" charge states rejected.

The RAW files collected by Xcalibur 2.1 were converted to *.MGF by Proteome Discoverer (v1.2.0.208, Thermo, San Jose, CA) and searched with Mascot (version 2.3.0, Matrix Science, London, UK). Cysteine carboxamidomethylation was set as a fixed modification of 57.0215 Da, oxidation of methionine, deamidation of asparagine and phosphorylation of serine, threonine and tyrosine were set as variable modifications. Up to two missing cleavages of trypsin were allowed. Mass tolerances were 20 ppm and 0.2 Da for the parent and fragment ions, respectively. A false discovery rate of 1% was set at both the peptide and site levels.

3. Results and discussion

3.1 Preparation of Fe^{3+} immobilized polySD-SiO₂

The Fe^{3+} immobilized polySD-SiO₂ materials were prepared by incubation of polySD-SiO₂ with FeCl_3 . The prepared materials were characterized with scanning electron microscope (SEM) and XPS. SEM images indicated that the materials maintained their integrity after incorporating with Fe^{3+} (Fig. 1a and b). The XPS spectrum implies that Fe^{3+} has been modified on the polySD-SiO₂ (Fig. 1c). These results indicated that Fe^{3+} ions modified polySD-SiO₂ materials have been successfully prepared.

3.2 Enrichment of phosphopeptides and glycopeptides with Fe^{3+} immobilized polySD-SiO₂

To investigate whether Fe^{3+} immobilized polySD-SiO₂ can enrich glycopeptides, tryptic digests of sialoglycoprotein bovine

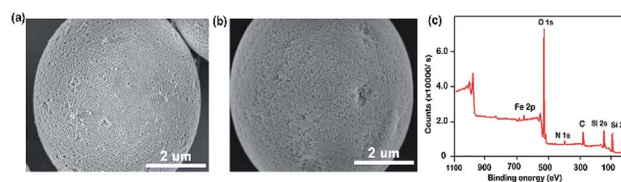


Fig. 1 Characterization of Fe^{3+} immobilized polySD-SiO₂ with SEM (a and b) and XPS (c). (a and b) SEM image of materials before (a) and after (b) immobilization with Fe^{3+} .

fetuin and bovine serum albumin at molar ratio of 1 : 100 were used as model samples. The number of glycopeptide signals is 30 (detailed information of glycopeptides in Table S1†) with the Fe^{3+} immobilized polySD-SiO₂ materials (Fig. S1†), which is comparable to that reported with polySD-SiO₂.²⁸ To further enrich both phosphopeptides and glycopeptides, tryptic digests of phosphoprotein α -casein and fetuin were used as model samples. At first, the tryptic digests of α -casein and fetuin at molar ratio of 1 : 3 were used to evaluate the prepared materials. Fig. 2 demonstrates that the mass spectra of peptides before and after treatment with Fe^{3+} immobilized polySD-SiO₂. Before enrichment with our materials, the mass spectrum was occupied with signals of non-modified peptides. The signals of glycopeptides could not be detected and only two phosphopeptides could be observed (Fig. 2a). The poor signals of PTM-peptides were mainly resulted from their low abundance. After enrichment with our materials, the signals of glycopeptides and phosphopeptides dominated the mass spectrum because the abundant non-PTM peptides were thoroughly removed. A total of 7 phosphopeptide signals (detailed information of phosphopeptides in Table S2†) and 20 glycopeptides could be readily found (Fig. 2b). Even 200 molar folds of BSA was mixed as interference with the tryptic digests of α -casein and fetuin at molar ratio of 1 : 3, our materials maintained its selectivity toward both glycopeptides signals and phosphopeptides. There are still 6 phosphopeptides and 19 glycopeptide signals could be easily found in the mass spectrum (Fig. 3a).

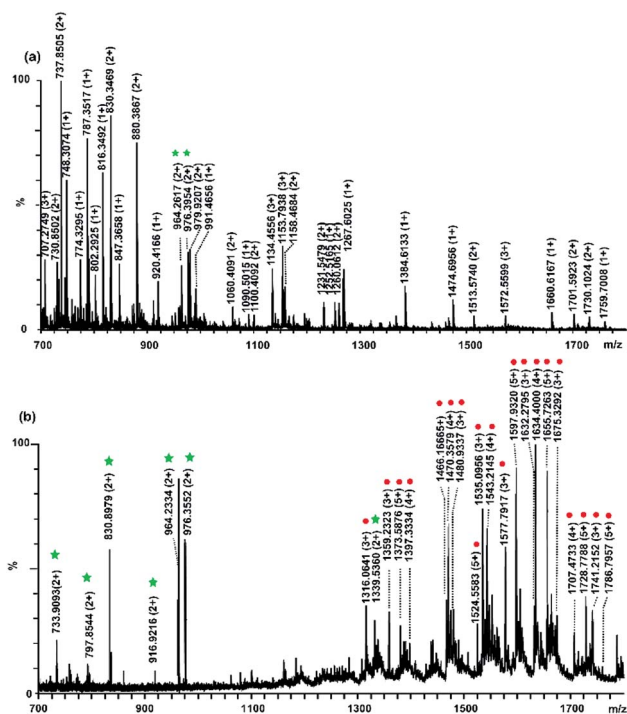


Fig. 2 MS spectra obtained from the tryptic digests of α -casein and fetuin before (a) and after (b) treatment with Fe^{3+} immobilized polySD-SiO₂ (b). The tryptic digests were α -casein : fetuin at molar ratio of 1 : 3. The phosphopeptides and glycopeptides are marked with green asterisks and red circles, respectively.

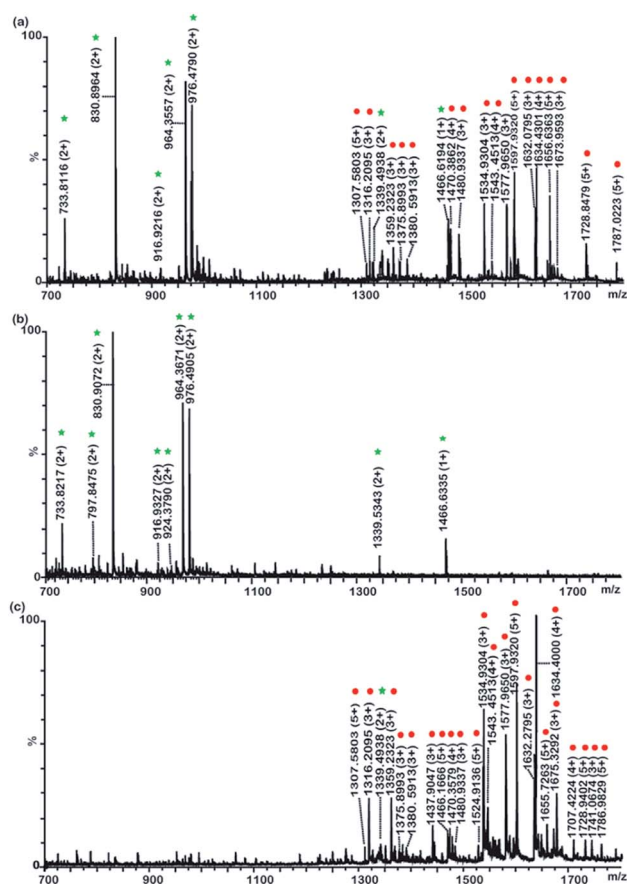


Fig. 3 MS spectra obtained from the tryptic digests of α -casein and fetuin at molar ratio of 1 : 2 : 400 after enrichment with Fe^{3+} immobilized polySD-SiO₂ (a) and separation with PolySD-SiO₂ (b and c). (a) Phosphopeptides and glycopeptides enrichment with polySD-SiO₂; (b) phosphopeptides fraction treated with Fe^{3+} immobilized polySD-SiO₂ and PolySD-SiO₂; (c): glycopeptides fraction treated with Fe^{3+} immobilized polySD-SiO₂ and PolySD-SiO₂; the phosphopeptides and glycopeptides are marked with green asterisks and red circles, respectively.

This result implied that Fe^{3+} immobilized polySD-SiO₂ could selectively enrich both glycopeptides and phosphopeptides.

3.3 Separation of phosphopeptides and glycopeptides with polySD-SiO₂

After glycopeptides and phosphopeptides were eluted from Fe^{3+} immobilized polySD-SiO₂, these two species were further separated with PolySD-SiO₂ under HILIC mode. In order to reduce the retention of charged peptides and enlarge the hydrophilicity difference between glycopeptides and non-glycosylated peptides, 5% TFA was added to the mobile phases.³³ The tryptic digests of α -casein : fetuin : BSA = 1 : 2 : 400 (molar ratio) were treated with Fe^{3+} immobilized polySD-SiO₂. After the treatment our materials, the high-abundance non-modified peptides were efficiently removed and 7 phosphopeptide signals and 16 glycopeptides were readily observed in the mass spectrum of the eluates. After subsequent separation with polySD-SiO₂ under HILIC mode, phosphopeptides and

glycopeptides were efficiently separated into two fractions. Because the further separation reduced the complexity of sample and also decreased the ion suppression effect in MS, nine phosphopeptide signals and 22 glycopeptide signals were easily detected in the mass spectrum of phosphopeptides (Fig. 3b) and glycopeptides fraction (Fig. 3c), respectively. Glycopeptides couldn't be observed in the phosphopeptide fraction, while very low intensities of one triple phosphopeptide ($m/z = 1339.5343$) were found in the glycopeptide fraction, which might result from the strong electrostatic interaction between the triple phosphopeptides and polySD-SiO₂ materials. These results demonstrated that Fe³⁺ immobilized polySD-SiO₂ enrichment coupled with PolySD-SiO₂ fractionation could efficiently separate phosphopeptides and glycopeptides from the peptide pool and further divide these two kinds of PTM-peptides into two fractions.

3.4 Enrichment and separation of phosphopeptides and glycopeptides with the reported method

We then compared the efficiency of previously reported method toward phosphopeptides and glycopeptides.³¹ At first, the tryptic digests of a-casein: fetuin = 1 : 2 : 400 (molar ratio) were treated with TiO₂. The phosphopeptides and glycopeptides could be enriched with TiO₂ and 7 phosphopeptide signals and 12 glycopeptide signals could be detected (Fig. 4a), while some non-PTM peptides could also be detected, such as peptide at m/z 7874.3626(2+). Then the enriched peptides from TiO₂ was further deglycosylated with PNGase F to remove glycans. The deglycosylated peptides and phosphopeptides were further separated with TSKGEL Amide micro-column under HILIC mode. Only 4 phosphopeptide signals and 4 deglycosylated peptide signals were found in the 75% ACN/0.1% TFA fraction (Fig. 4b), while there were still 2 multiple phosphopeptides and 1 deglycosylated peptides in the 50% ACN/0.1% TFA fraction. It turns out that phosphopeptides and deglycosylated peptides were co-eluted in both two fractions, which is consistent with the previous report.³¹ Taking together the afore-mentioned results, these data demonstrated that phosphopeptides and deglycosylated peptides overlapped in these two fractions. It is beneficial to separate phosphopeptides and glycopeptides before deglycosylation with HILIC column.

3.5 The validation of the developed strategy

To evaluate the recovery of the developed strategy, stable isotope dimethyl labeling method were employed (details in 2.7 Validating the established method).³⁴ The average recovery was $85.2 \pm 3.2\%$ ($n = 3$), $79.2 \pm 4.1\%$ and $84.6 \pm 2.3\%$ ($n = 3$) for standard momo-phosphopeptide, di-phosphopeptide and glycopeptide, respectively. For comparison, the recovery of the reported method was also performed, which separate phosphopeptides and glycan removed glycopeptides after TiO₂ enrichment. It turned out that the recovery of the reported method was much lower than that obtained with our developed protocol. They were $53.3 \pm 1.8\%$ and $62.9 \pm 3.4\%$ ($n = 3$) for phosphopeptides and glycopeptides, respectively. To investigate the reproducibility of the established strategy, three

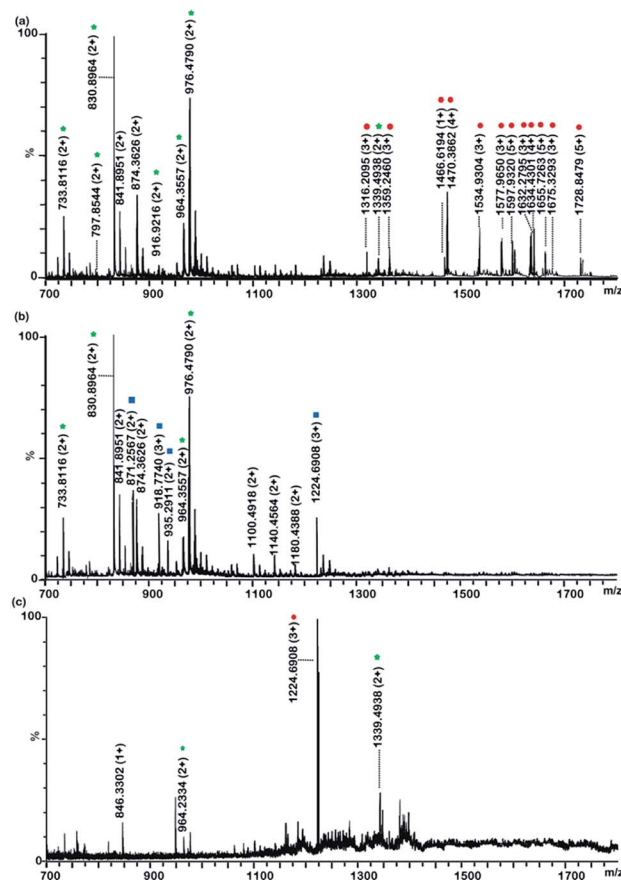


Fig. 4 MS spectra obtained from the tryptic digests of a-casein and fetuin at molar ratio of 1 : 2 : 400 after enrichment with TiO₂ (a) and separation of phosphopeptides and deglycosylated peptides with TSKGEL-amide (b and c). (a): Phosphopeptides and glycopeptides enrichment with TiO₂; (b): peptides eluted from TSKGEL-amide with 75% ACN/0.1% TFA; (c): peptides eluted from TSKGEL-amide with 50% ACN/0.1% TFA. The phosphopeptides, glycopeptides and deglycosylated glycopeptides are marked with green asterisks, red circles and blue squares, respectively.

parallel experiments were performed to enrich and separate phosphopeptides and glycopeptides from the tryptic digests of a-casein and fetuin at molar ratio of 1 : 3. The number of identified phosphopeptides was 9, 9 and 10 in three experiments and the number of detected glycopeptides was 20, 21 and 20 in three experiments. These results demonstrated that proposed method is reproducible and superior to the reported one in the aspect of recovery.

The developed strategy was used for identification of phosphopeptides and glycopeptides from 20 μ g HeLa S3 cell lysate. The cell lysate was digested with trypsin and the tryptic peptides were treated with our established method. The phosphopeptides fraction and the deglycosylated glycopeptides fraction were analyzed by Orbitrap mass spectrometer. The selectivity of the established method for phosphopeptides and glycopeptides was 75.3%. More than 1903 phosphopeptides from 542 proteins were characterized in the phosphopeptides fraction (Table S3[†]) and 139 unique sites from 83 glycoproteins in glycopeptides fraction (Table S4[†]). No glycopeptide was detected in the

phosphopeptides fraction while 20 multiply phosphorylated peptides were characterized in the glycopeptide fraction. This overlapping ratio between phosphopeptides and glycopeptides achieved with our strategy (<5%) is much lower than that with the literature (43%).³¹ The result further demonstrated the advantages of our method for enrichment and fractionation of phosphopeptides and glycopeptides.

4. Conclusions

In summary, we have developed an efficient method for simultaneous enrichment and subsequent separation of phosphopeptides and glycopeptides, taking advantages of the strong affinity between Fe³⁺ immobilized polySD-SiO₂ and PTM-peptides and the hydrophilicity difference between phosphopeptides and glycopeptides on polySD-SiO₂. The established method has the advantages of high recovery and selectivity toward the target peptides and low overlapping between phosphopeptides and glycopeptides. We provide a powerful tool to tackle the challenge of simultaneous and selective analysis of phosphopeptides and glycopeptides. This tool may promote the discovery of more PTM-sites from limited amount of bio-samples, especially clinic samples.

Conflicts of interest

There are no conflicts to declare.

Acknowledgements

We thank the National Natural Science Foundation of China (81472487 and 81773197), the Natural Science Foundation of Hubei Province (2017CFB412).

References

- 1 A. Bah, R. M. Vernon, Z. Siddiqui, M. Krzeminski, R. Muhandiram, C. Zhao, N. Sonenberg, L. E. Kay and J. D. Forman-Kay, Folding of an intrinsically disordered protein by phosphorylation as a regulatory switch, *Nature*, 2015, **519**, 106–U240.
- 2 J.-J. Chung, S.-H. Shim, R. A. Everley, S. P. Gygi, X. Zhuang and D. E. Clapham, Structurally Distinct Ca²⁺ Signaling Domains of Sperm Flagella Orchestrate Tyrosine Phosphorylation and Motility, *Cell*, 2014, **157**, 808–822.
- 3 S. S. Pinho and C. A. Reis, Glycosylation in cancer: mechanisms and clinical implications, *Nat. Rev. Cancer*, 2015, **15**, 540–555.
- 4 M. Perdicchio, J. M. Ilarregui, M. I. Verstege, L. A. M. Cornelissen, S. T. T. Schetters, S. Engels, M. Ambrosini, H. Kalay, H. Veninga, J. M. M. den Haan, L. A. van Berkel, J. N. Samsom, P. R. Crocker, T. Sparwasser, L. Berod, J. J. Garcia-Vallejo, Y. van Kooyk and W. W. J. Unger, Sialic acid-modified antigens impose tolerance via inhibition of T-cell proliferation and de novo induction of regulatory T cells, *Proc. Natl. Acad. Sci. U. S. A.*, 2016, **113**, 3329–3334.
- 5 I. Quast, C. W. Keller, M. A. Maurer, J. P. Giddens, B. Tackenberg, L.-X. Wang, C. Muenz, F. Nimmerjahn, M. C. Dalakas and J. D. Luenemann, Sialylation of IgG Fc domain impairs complement-dependent cytotoxicity, *J. Clin. Invest.*, 2015, **125**, 4160–4170.
- 6 Y. Ren, X. Liu, R. Geng, Q. Lu, R. Rao, X. Tan, X. Yang and W. Liu, Increased Level of alpha 2,6-Sialylated Glycans on HaCaT Cells Induced by Titanium Dioxide Nanoparticles under UV Radiation, *Materials*, 2018, **8**, 253.
- 7 F. Liu, K. Iqbal, I. Grundke-Iqbal and C. X. Gong, Involvement of aberrant glycosylation in phosphorylation of tau by cdk5 and GSK-3 beta, *FEBS Lett.*, 2002, **530**, 209–214.
- 8 A. C. Leney, D. El Atmioui, W. Wu, H. Ovaa and A. J. R. Heck, Elucidating crosstalk mechanisms between phosphorylation and O-GlcNAcylation, *Proc. Natl. Acad. Sci. U. S. A.*, 2017, **114**, E7255–E7261.
- 9 D. Jiang, X. Li, J. Ma and Q. Ji, Development of Gd³⁺-immobilized glutathione-coated magnetic nanoparticles for highly selective enrichment of phosphopeptides, *Talanta*, 2018, **180**, 368–375.
- 10 T. E. Thingholm, T. J. D. Jorgensen, O. N. Jensen and M. R. Larsen, Highly selective enrichment of phosphorylated peptides using titanium dioxide, *Nat. Protoc.*, 2006, **1**, 1929–1935.
- 11 I. Kuroda, Y. Shintani, M. Motokawa, S. Abe and M. Furuno, Phosphopeptide-selective column-switching RP-HPLC with a titania precolumn, *Anal. Sci.*, 2004, **20**, 1313–1320.
- 12 D. E. McNulty and R. S. Annan, Hydrophilic interaction chromatography reduces the complexity of the phosphoproteome and improves global phosphopeptide isolation and detection, *Mol. Cell. Proteomics*, 2008, **7**, 971–980.
- 13 J. T. Waniwan, Y.-J. Chen, R. Capangpangan, S.-H. Weng and Y.-J. Chen, Glycoproteomic Alterations in Drug-Resistant Nonsmall Cell Lung Cancer Cells Revealed by Lectin Magnetic Nanoprobe-Based Mass Spectrometry, *J. Proteome Res.*, 2018, **17**, 3761–3773.
- 14 J. Zhou, W. Yang, Y. Hu, N. Hoti, Y. Liu, P. Shah, S. Sun, D. Clark, S. Thomas and H. Zhang, Site-Specific Fucosylation Analysis Identifying Glycoproteins Associated with Aggressive Prostate Cancer Cell Lines Using Tandem Affinity Enrichments of Intact Glycopeptides Followed by Mass Spectrometry, *Anal. Chem.*, 2017, **89**, 7623–7630.
- 15 M. R. Larsen, S. S. Jensen, L. A. Jakobsen and N. H. H. Heegaard, Exploring the sialome using titanium dioxide chromatography and mass spectrometry, *Mol. Cell. Proteomics*, 2007, **6**, 1778–1787.
- 16 D. Jiang, X. Li, X. Lv and Q. Jia, A magnetic hydrazine-functionalized dendrimer embedded with TiO₂ as a novel affinity probe for the selective enrichment of low-abundance phosphopeptides from biological samples, *Talanta*, 2018, **185**, 461–468.
- 17 D. P. Xu, G. Q. Yan, M. X. Gao, C. H. Deng and X. M. Zhang, Highly selective SiO₂-NH₂@TiO₂ hollow microspheres for simultaneous enrichment of phosphopeptides and glycopeptides, *Anal. Bioanal. Chem.*, 2017, **409**, 1607–1614.

- 18 G. Jin, D. Yu, Z. Guo, D. Yang, H. Zhang, A. Shen, J. Yan and X. Liang, Preparation of glyco-silica materials via thiol-ene click chemistry for adsorption and separation, *RSC Adv.*, 2016, **6**, 8584–8587.
- 19 X. Dong, H. Qin, J. Mao, D. Yu, X. Li, A. Shen, J. Yan, L. Yu, Z. Guo, M. Ye, H. Zou and X. Liang, In-depth analysis of glycoprotein sialylation in serum using a dual-functional material with superior hydrophilicity and switchable surface charge, *Anal. Chem.*, 2017, **89**, 3966–3972.
- 20 Y. Zhang, H. Jing, T. Wen, Y. Wang, Y. Zhao, X. Wang, X. Qian and W. Ying, Phenylboronic acid functionalized C3N4 facultative hydrophilic materials for enhanced enrichment of glycopeptides, *Talanta*, 2019, **191**, 509–518.
- 21 H. Park, S. Walta, R. R. Rosencrantz, A. Koerner, C. Schulte, L. Elling, W. Richtering and A. Boeker, Micelles from self-assembled double-hydrophilic PHEMA-glycopolymer-diblock copolymers as multivalent scaffolds for lectin binding, *Polym. Chem. C*, 2016, **7**, 878–886.
- 22 C. Xia, F. Jiao, F. Gao, H. Wang, Y. Lv, Y. Shen, Y. Zhang and X. Qian, Two-dimensional mos2-based zwitterionic hydrophilic interaction liquid chromatography material for the specific enrichment of glycopeptides, *Anal. Chem.*, 2018, **90**, 6651–6659.
- 23 Y. Chen, Z. Xiong, L. Zhang, J. Zhao, Q. Zhang, L. Peng, W. Zhang, M. Ye and H. Zou, Facile synthesis of zwitterionic polymer-coated core-shell magnetic nanoparticles for highly specific capture of N-linked glycopeptides, *Nanoscale*, 2015, **7**, 3100–3108.
- 24 J. Y. Yan, X. L. Li, L. Yu, Y. Jin, X. L. Zhang, X. Y. Xue, Y. X. Ke and X. M. Liang, Selective enrichment of glycopeptides/phosphopeptides using porous titania microspheres, *Chem. Commun.*, 2010, **46**, 5488–5490.
- 25 D. P. Xu, M. X. Gao, C. H. Deng and X. M. Zhang, Synthesis of bifunctional $\text{TiO}_2@SiO_2-B(OH)_3@Fe_3O_4@TiO_2$ sandwich-like nanosheets for sequential selective enrichment of phosphopeptides and glycopeptides for mass spectrometric analysis, *Anal. Bioanal. Chem.*, 2016, **408**, 5489–5497.
- 26 X. J. Zou, J. Z. Jie and B. Yang, Single-Step Enrichment of N-Glycopeptides and Phosphopeptides with Novel Multifunctional Ti^{4+} -Immobilized Dendritic Polyglycerol Coated Chitosan Nanomaterials, *Anal. Chem.*, 2017, **89**, 7520–7526.
- 27 Y. Hong, H. Zhao, C. Pu, Q. Zhan, Q. Sheng and M. Lan, Hydrophilic Phytic Acid-Coated Magnetic Graphene for Titanium(IV) Immobilization as a Novel Hydrophilic Interaction Liquid Chromatography-Immobilized Metal Affinity Chromatography Platform for Glyco- and Phosphopeptide Enrichment with Controllable Selectivity, *Anal. Chem.*, 2018, **90**, 11008–11015.
- 28 J. X. Wang, Y. A. Wang, M. X. Gao, X. M. Zhang and P. Y. Yang, Facile synthesis of hydrophilic polyamidoxime polymers as a novel solid-phase extraction matrix for sequential characterization of glyco- and phosphoproteomes, *Anal. Chim. Acta*, 2016, **907**, 69–76.
- 29 P. Hao, H. Zhang and S. K. Sze, Application of electrostatic repulsion hydrophilic interaction chromatography to the characterization of proteome, glycoproteome, and phosphoproteome using nano LC-MS/MS, *Methods Mol. Biol.*, 2011, **790**, 305–318.
- 30 G. Palmisano, B. L. Parker, K. Engholm-Keller, S. E. Lendal, K. Kulej, M. Schulz, V. Schwammle, M. E. Graham, H. Saxtorph, S. J. Cordwell and M. R. Larsen, A Novel Method for the Simultaneous Enrichment, Identification, and Quantification of Phosphopeptides and Sialylated Glycopeptides Applied to a Temporal Profile of Mouse Brain Development, *Mol. Cell. Proteomics*, 2012, **11**, 1191–1202.
- 31 M. N. Melo-Braga, M. Schulz, Q. Liu, A. Swistowski, G. Palmisano, K. Engholm-Keller, L. Jakobsen, X. Zeng and M. R. Larsen, Comprehensive Quantitative Comparison of the Membrane Proteome, Phosphoproteome, and Sialome of Human Embryonic and Neural Stem Cells, *Mol. Cell. Proteomics*, 2014, **13**, 311–328.
- 32 B. Zhang, R. Z. Yu, Y. H. Yu, C. Peng, R. Xie, Y. Zhang and J. Y. Chen, Lectin inspired polymers based on the dipeptide Ser-Asp for glycopeptide enrichment, *Analyst*, 2018, **143**, 5090–5093.
- 33 S. Mysling, G. Palmisano, P. Hojrup and M. Thaysen-Andersen, Utilizing Ion-Pairing Hydrophilic Interaction Chromatography Solid Phase Extraction for Efficient Glycopeptide Enrichment in Glycoproteomics, *Anal. Chem.*, 2010, **82**, 5598–5609.
- 34 O. Kleifeld, A. Doucet, A. Prudova, U. A. D. Keller, M. Gioia, J. N. Kizhakkedathu and C. M. Overall, Identifying and quantifying proteolytic events and the natural N terminome by terminal amine isotopic labeling of substrates, *Nat. Protoc.*, 2011, **6**, 1578–1611.