



Minimally-invasive-periventricular-device-occlusion versus surgical-closure for treating perimembranous-ventricular-septal-defect: 3-year outcomes of a multicenter randomized clinical trial

Wenxin Lu^{1#}, Fengwen Zhang^{1#}, Taibing Fan², Tianli Zhao³, Yu Han², Xiaopeng Hu¹, Qi Li¹, Hao Shi¹, Xiangbin Pan¹

¹Structural Heart Disease Center, National Center for Cardiovascular Disease and Fuwai Hospital, Chinese Academy of Medical Sciences and Peking Union Medical College, Beijing, China; ²Heart Center of Henan Provincial People's Hospital, Central China Fuwai Hospital of Zhengzhou University, Zhengzhou, China; ³The Central South University, Changsha, China

Contributions: (I) Conception and design: X Pan, W Lu, F Zhang; (II) Administrative support: W Lu, F Zhang, T Fan, T Zhao, Y Han; (III) Provision of study materials or patients: T Fan, T Zhao, Y Han, X Hu, Q Li, H Shi; (IV) Collection and assembly of data: W Lu, F Zhang, T Zhao, Y Han; (V) Data analysis and interpretation: All authors; (VI) Manuscript writing: All authors; (VII) Final approval of manuscript: All authors.

[#]These authors contributed equally to this work.

Correspondence to: Xiangbin Pan. Structural Heart Disease Center, Fuwai Hospital, No. 167, North Lishi Street, Xicheng District, Beijing 100037, China. Email: xiangbin428@hotmail.com.

Background: Minimally-invasive-periventricular-device-occlusion (MIPDO) combined superiority of surgical-repair and percutaneous-device-closure in treating perimembranous-ventricular-septal-defect (pmVSD). This study was to evaluate the efficacy and safety of MIPDO for treating pmVSD, comparing with surgical-repair.

Methods: Patients aged ≥ 3 months with isolated pmVSDs were randomized to undergo either surgical or MIPDO procedure, with the median follow-up time of 49 months. The primary outcome was the rate of complete pmVSD closure at discharge. The secondary outcomes included the adverse events during hospitalization and follow-up, chest tube output volume, blood transfusion volume, procedural duration, ventilation time, hospitalization duration and hospitalization cost. Also, perioperative cardiac performance and systemic conditions were evaluated.

Results: Of the 313 patients (9 months to 42 years old; median, 4 years old) with pmVSDs recruited from 3 centers, 100 were finally enrolled and randomly allocated 1:1 into two groups. The non-inferiority (non-inferiority margin -8.0%) of MIPDO to surgical closure regarding efficacy was shown in both intention-to-treat (0, 95% CI: -0.055 to 0.055) and per-protocol populations (0.02, 95% CI: -0.018 to 0.058). Although the rate of adverse events was similar between groups, the MIPDO group showed superiority in procedural duration, ventilation time, chest tube output volume, postoperative hospitalization time and hospitalization cost compared with surgical group ($P < 0.05$). Moreover, MIPDO method showed comparable perioperative cardiac performance with milder change of systemic condition.

Conclusions: In patients with pmVSDs, MIPDO method showed non-inferiority to surgical closure in efficacy for both intention-to-treat and per-protocol population with easier perioperative recovery, economic benefit and promising outcomes.

Keywords: Periventricular; ventricular septal defect (VSD); minimally invasive; device; surgical

Submitted Nov 14, 2020. Accepted for publication Feb 06, 2021.

doi: 10.21037/jtd-20-3298

View this article at: <http://dx.doi.org/10.21037/jtd-20-3298>

Introduction

Ventricular septal defect (VSD) is one of the most common congenital cardiac malformations, among which perimembranous-ventricular-septal-defect (pmVSD) accounts for up to 80% (1). Surgical repair with cardiopulmonary bypass (CPB) has been a routine treatment for decades, but the trauma and the potential risk of sequelae urge the innovation (2-5). In the last decade, with the development of devices, percutaneous closure gradually became an alternative for pmVSD treatment. However, due to its vascular approach, this method had some limitations in treating patients with low weight or dealing with tough cases, and complications (intraoperative aortic valve injury by wire, atrioventricular block or others) were frequently reported (6,7). Thus, minimally-invasive-periventricular-device-occlusion (MIPDO), which combines the advantages of cardiac surgery and interventional technique, was proposed by surgeons (8-10). To place the device by a minimally invasive transthoracic procedure on a beating heart with the guidance of transoesophageal echocardiography (TEE) instead of the digital subtraction angiography, this operation is speculated to have easier postoperative recovery compared with surgical repair, as while as better controllability and less radiation exposure compared with percutaneous closure. Although MIPDO procedure has been widely applied in China and also adopted in some European countries (11-13), it is still controversial. We therefore performed this study to investigate the efficacy and safety of MIPDO procedure in treating patients with pmVSD. We present the following article in accordance with the CONSORT reporting checklist (available at <http://dx.doi.org/10.21037/jtd-20-3298>).

Methods

Study design and patients

This study was a prospective, multicenter, randomized controlled, open-label, non-inferiority trial evaluating the safety and efficacy of MIPDO method comparing to surgical closure for the treatment of isolated pmVSD patients. This study was registered with ClinicalTrials, Gov ID: NCT02644330. The study protocol was authorized by the Ethics Committee of Fuwai Hospital (Beijing, China) and conducted according to the principles expressed in the 1964 Declaration of Helsinki.

Study methods

The study was conducted in accordance with the Declaration of Helsinki (as revised in 2013). The study was approved by the Ethics Committee of Fuwai Hospital, Beijing, China (No. 2015-707) and informed consent was taken from all the patients. Patients were consecutively recruited from 3 centers during February 2016 to March 2017. Inclusion criteria for candidates were as follows: (I) age ≥ 3 months; (II) transthoracic echocardiography (TTE)-confirmed isolated pmVSD, and diameter of defect ranged from 3 to 10 mm together with heart morphological changes; (III) applicability for both operation technique. Exclusion criteria included: (I) malaligned VSD; (II) muscular, subarterial or inlet septal VSD; (III) severe pulmonary artery hypertension with right-to-left shunt or bidirectional shunt; (IV) aortic valve prolapse with more than moderate regurgitation; (V) infective endocarditis, or with neoplasm in cardiac chambers; (VI) coexistence with other cardiac malformations that need surgery with CPB. All patients were routinely screened by clinical history collection, physical examination, chest X-rays, electrocardiography, TTE and blood tests. The patients were allocated 1:1 into two groups (MIPDO vs. surgical) in accordance to the randomized block design. The patients, surgeons and care givers were not blinded to the group assignment, while the assessing of outcomes was blinded. If the MIPDO strategy failed, patients would receive an intraoperative conversion to surgical closure.

Operation technique and post-operation management

For MIPDO group, procedures were executed in accordance with present clinical practice consensus (14) (Appendix 1). Periventricular closure was performed under TEE guidance with the ventricular occluder placed by a catheter directly entering the ventricle from a subxiphoid incision. Occluder size was similar to or slightly larger than the VSD (should not exceed 2 mm). Concentric occluders were selected for patient with a margin of VSD ≥ 2 mm from the aortic annulus; and for those whose margins were less than 2 mm, the eccentric occluders were recommended (15,16). For surgical group, patients were operated under standard CPB through median sternotomy, and a dacron patch or direct suture was used to repair the pmVSD depending on its size. Operation rooms were equipped with both TEE and CPB machines, and surgeons qualified for both surgical and MIPDO methods were demanded in this

trial.

Patients were given different postprocedural management between groups. Apart from the mutual intravenous antibiotics to prevent infection, patients in MIPDO group received postoperative heparin for 24 hours and oral aspirin (3–5 mg/kg/d) for 6 months to prevent device-related thrombus, while those in surgical group were prescribed with oral digitalis and diuretic drugs for 3 months to improve cardiac function.

Follow-up and evaluation criteria

All patients underwent clinical examination, electrocardiography, chest X-rays, TTE at discharge, 1, 3, 6, 12, 24 and 36 months after operation. Besides, they receive daily blood tests during first 3 days after procedure.

The primary outcome was the success rate of the operation, which was defined as completing the certain procedure (consistent with the randomization when analyzed using intention-to-treat (ITT) population, while consistent with the ultimate effective protocol when analyzed using per-protocol (PP) population) with the TTE-confirmed complete closure of VSD at discharge. The secondary outcomes included the severe adverse events (SAEs) or adverse events (AEs) during hospitalization and follow-up, chest tube output volume, blood transfusion volume, operation time (from incision to complete closure of the sternum), ventilation time, postoperative hospitalization time and hospitalization cost. SAE was defined as one of the following events: all-cause death, cardiac-specific death, cardiac perforation, cardiac tamponade, iatrogenic tricuspid regurgitation, iatrogenic aortic regurgitation, dislocation or distortion of occluders and severe hemolysis. AE was defined as one of the following events: arrhythmia (complete atrioventricular block or complete bundle branch block), residual shunt (greater than 2 mm or flow rate greater than 3 m/s), infective endocarditis, undesirable healing or infection of the incision, hemorrhage and postoperative murmur.

Perioperative cardiac performance and systemic conditions were analyzed to delineate the immediate outcomes of different procedures. Perioperative cardiac performance was evaluated with TTE from baseline to 3-month post-operation (Appendix 2). Systemic conditions (including organ function, inflammatory response and hematological status) were assessed by the blood test results. The 3-day post-procedural examination results were used to illustrate

patients' condition at discharge.

Statistical analysis

Sample size was determined according to the calculation result of sample size formula (Appendix 3), which indicated that a sample size of 50 participants for each group in a 1:1 ratio would provide more than 80% power in a 0.05 level test, with a one-sided alpha level of 0.025, beta level of 0.2 and non-inferiority margin of -0.08 (-8%). Data was from the ITT (groups patients based on the randomization, irrespective of whether some of these patients might switch or discontinue treatment prior to the trial's end) and PP (groups patients based on the ultimate treatment) population. The primary outcomes were analyzed with data from both the ITT and PP population. The secondary outcomes were analyzed with data from the ITT population. Perioperative cardiac performance and systemic conditions were analyzed with data from the PP population. Statistical analysis was performed with SPSS 19.0 (IBM Corp, Armonk, New York). Continuous variables were analyzed using *t* test (described with mean \pm standard deviation; independent-samples *t* test used for data of different groups, paired-samples *t* test used for data of different time points) or Mann-Whitney U test (described with median and interquartile range) according to the distribution. Categorical variables (described with frequency and percentage) were analyzed using chi-square test or Fisher test according to the expected frequency. *P* values <0.05 were considered significant.

Results

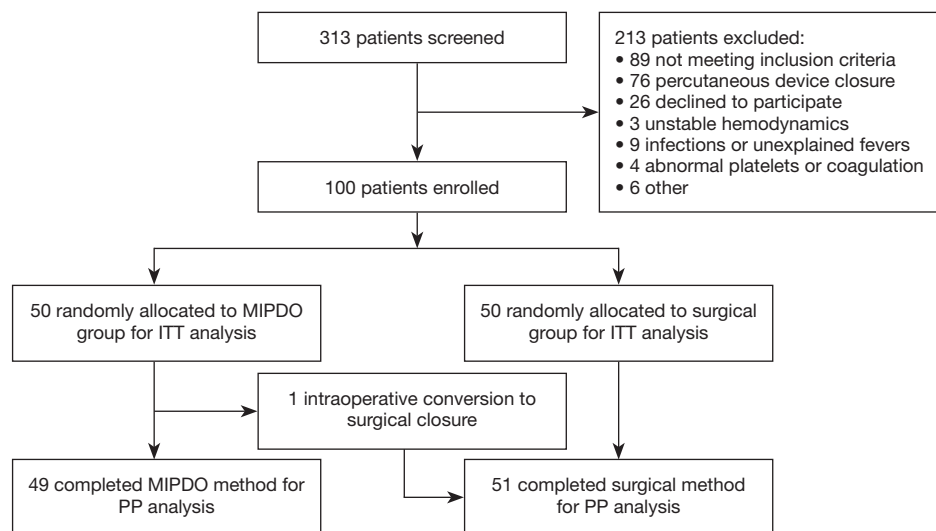
Of the 100 patients consecutively included (ages ranged from 9 months to 42 years, median, 4 years; 47 males and 53 females), 50 patients were allocated to the MIPDO group and 50 patients to the surgical group, with the patients between 1 to 6-year-old dominating (74%) (Table 1). The median duration of follow-up was 49 months (ranged from 43 to 56 months) and the completeness was 100%. The flow of patient participation through this trial was shown in Figure 1.

The success rate of operation, set as the primary outcome to evaluate the efficacy, was 98% (49/50) in MIPDO group versus 98% (49/50) in surgical group for ITT population; and 100% (49/49) versus 98% (50/51) for PP population. The absolute difference between groups for ITT population was 0 (95% CI: -0.055 to 0.055); and for PP population

Table 1 Demographic and VSD characters between groups

	MIPDO (N=50)	Surgical (N=50)
Sex (men/women)	23/27	24/26
Age (year)	4 (2 to 5)	4 (2 to 5)
<1 year (n)	1	8
1–6 year (n)	42	32
6–18 year (n)	4	6
>18 year (n)	3	4
Height (cm)	91.5 (79.8 to 103.0)	90.5 (77.3 to 107.3)
Weight (kg)	13 (10.3 to 16.1)	13.0 (8.5 to 17)
Size of VSD (mm)	5 (4 to 6)	6 (5 to 7)
Distance from aortic ring (mm)	2.08 (1.34 to 2.82)	1.78 (0.97 to 2.60)
Symptomatic cases (n)	35	41

VSD, ventricular septal defect.

**Figure 1** Study design and patient participation flow. ITT, intention-to-treat; PP, per-protocol.

was 0.02 (95% CI: -0.018 to 0.058). For both populations, the lower limit of the 95% CI: was beyond the predefined non-inferiority margin of -0.08, suggesting the non-inferiority of MIPDO method compared with surgical closure in treating pmVSD (Table 2). Here were the details of 2 failed cases: case 1 was an intraoperative conversion to surgical closure, the patient had a 7.5 mm VSD and the distance from aortic annulus to VSD margin was 1.8 mm, with no residual shunt at discharge; case 2 was randomized to surgical group, showing a residual shunt of 1mm at

discharge, which disappeared at 1-month follow-up.

In MIPDO group, AE was found in one patient who had ECG-confirmed postoperative arrhythmia (left anterior fascicular block) at 1- and 3-month follow-up, whereas recovered at 6-month post-procedural examination. In surgical group, AEs were revealed in 2 cases. One was for undesirable incision healing with granulomas formation, and underwent debridement at 1 month after surgery. The other was for incision inflammation, which was presented 2 weeks after surgery, and recovered with intravenous

Table 2 Efficacy endpoint between procedures in different patterns of population

	MIPDO (n/N)	Surgical (n/N)	Difference between groups (two-sided 95% CI)
ITT population	49/50 (98%)	49/50 (98%)	0 (−0.055 to 0.055)*
PP population	49/49 (100%)	50/51 (98%)	0.02 (−0.018 to 0.058)*

*, showing non-inferiority of periventricular to surgical closure. n, population with echocardiography-confirmed complete VSD closure; N, population in the different patterns of the predefined population; ITT, intention-to-treat; PP, per-protocol.

Table 3 Reported adverse events between procedures in intention-to-treat population

	MIPDO (N=50)	Surgical (N=50)	Difference between groups (95% CI)
Severe adverse events (n)	0	0	–
All-cause death	0	0	–
Cardiac-specific death	0	0	–
Cardiac perforation or tamponade	0	0	–
Operation-related valve dysfunction	0	0	–
Dislocation or distortion of occluders	0	0	–
Severe hemolysis	0	0	–
Adverse events (n)	1	2	−0.02 (−0.087 to 0.047)
Arrhythmia	1 ^a	0	0.02 (−0.019 to 0.059)
Undesirable healing or infection of the incision	0	2	−0.04 (−0.094 to 0.014)
Residual shunt	0	0	–
Infective endocarditis	0	0	–
Hemorrhage	0	0	–
Postoperative murmur	0	0	–

^a, newly onset of 'left anterior fascicular block', recovered at 6-month post-procedural examination.

Table 4 Safety and economical endpoints between procedures in intention-to-treat population

	MIPDO (N=50)	Surgical repair (N=50)	P value
Operation time (min)	82.9±35.5	194.5±74.3	<0.001
Ventilation time (h)	4.7±2.1	9.8±12.6	0.005
Chest tube output (mL)	77.5±74.0	130.6±124.5	0.01
Size of occluder (mm)	6.1±1.4	–	–
Postoperative hospitalization time (d)	5 (4 to 6)	7 (7 to 9)	<0.001
Hospitalization cost (¥)	38,142.9 (35,616.7 to 42,750.0)	44,383.8 (39,911.5 to 48,275.0)	<0.001

antibiotics used. No other complications or reintervention occurred throughout the follow-up (*Table 3*). Although the efficacy endpoint and complication rate of the two groups were similar, the MIPDO group showed significantly lower operation time, ventilation time, chest tube output volume,

postoperative hospitalization time and hospitalization cost than that in surgical group for the ITT population ($P < 0.05$, *Table 4*).

Furthermore, perioperative cardiac performance and systemic condition were analyzed in PP population.

Table 5 Peri-operational cardiac performance between procedures in per-protocol population

	MIPDO (N=49)				Surgical (N=51)			
	Baseline	Discharge ^a	1-month	3-month	Baseline	Discharge	1-month	3-month
Structural remodeling								
LA (mm)	21 (20 to 22)	19 (17 to 21) [‡]	19 (17 to 21) [‡]	20 (18 to 20) [‡]	22 (19 to 24)	20 (17 to 22) [‡]	19 (18 to 22) [‡]	19 (17 to 22) [‡]
LVEDd (mm)	33 (30 to 36)	28 (25 to 31) [‡]	28 (26 to 32) [‡]	29 (26 to 31) [‡]	34 (30 to 37)	28 (25 to 32) [‡]	29 (26 to 32) [‡]	29 (26 to 32) [‡]
RV (mm)	13 (12 to 14)	12 (11 to 14)	12 (11 to 14)	13 (11 to 14)	12 (11 to 14)	12 (10 to 14)	12 (11 to 14)	12 (11 to 14)
IVS/LVPW	1 (1 to 1)	1 (1 to 1)	1 (1 to 1)	1 (1 to 1)	1 (1 to 1)	1 (1 to 1)	1 (1 to 1)	1 (1 to 1)
Mycardial function								
EF (%)	67 (65 to 70)	66 (60 to 70)	67 (65 to 70)	67 (65 to 70) [¶]	65 (63 to 69)	65 (62 to 66)	65 (63 to 68)	68 (65 to 70) [¶]
Hemodynamic status								
HR (bpm)	113 (101 to 120)	122 (113 to 132) [‡]	110 (93 to 120) ^{¶¶}	103 (95 to 116) ^{¶¶}	110 (106 to 120)	135 (122 to 140) [‡]	107 (100 to 123) [¶]	100 (94 to 116) ^{¶¶}
CI (L/min/m ²)	5.5 (4.1 to 6.9)	4.1 (3.2 to 5.1) [‡]	3.8 (3.0 to 4.7) [‡]	3.7 (2.8 to 4.4) [‡]	5.7 (4.7 to 7.2)	4.4 (3.4 to 5.8) [‡]	3.9 (3.3 to 5.5) [‡]	3.7 (3.4 to 5.2) [‡]

^a, measured at 3-day after procedure. [‡]P<0.05, ^{‡‡}P<0.001 as compared with baseline; [¶]P<0.001 as compared with discharge. LA, left atrial diameter; LVEDd, left ventricular end-diastolic dimension; RV, right ventricular diameter; IVS, interventricular septal thickness; LVPW, left ventricular posterior wall thickness; EF, ejection fraction; HR, heart rate; CI, cardiac index.

Perioperative TTE showed similar trend of cardiac performance in two groups (*Table 5*). Perioperative blood test results indicated that creatine kinase (CK) and lactate dehydrogenase (LDH) levels were significantly increased postoperatively, as while as hemoglobin (Hb), platelet count (PLT), alanine transaminase (ALT) and creatine kinase-MB (CK-MB) levels were significantly decreased in both groups. White blood cell count (WBC) and blood urea nitrogen (BUN) levels were significantly increased only in surgical group, while the aspartate transaminase (AST) level was significantly decreased only in MIPDO group. Additionally, the MIPDO group showed significantly less variation of WBC, PLT, CK, LDH and BUN, and greater amelioration of AST compared with surgical group (P<0.05, *Table 6*).

Discussion

To our best knowledge, this is the first study demonstrating the non-inferiority of MIPDO to surgical closure in efficacy for both ITT and PP population with a median follow-up time of 49 months. In this study, data were analyzed with 'ITT' or 'PP' population for different practical concerns: the 'ITT' emphasized the 'intention', better for evaluating the rationality of clinical decision making; while 'PP' emphasized the 'protocol', better for evaluating the technique itself. The rate of effective VSD closure with

MIPDO method (98%) in ITT population was comparable to previous reports (17-19), and the complication rate (2%) was low throughout the follow-up. Moreover, MIPDO showed superiority in operation-related trauma (less operation time), postoperative recovery (less ventilation time, chest tube output and postoperative hospitalization time) and economic benefit (lower hospitalization cost).

Although MIPDO method has been popular for its short learning curve, easy manipulation, satisfying short-term and long-term outcomes in China since firstly proposed around 2008 by Zeng and colleagues (16,20), it has still not been extensively adopted by the international community. The real potential advantages of this technique remain ambiguous and the patient-selection indications have not reached an agreement in different centers, which seems to be the core issues for the development and promotion of this procedure.

In terms of patient-selection indications, babies (usually less than 1-year-old) with pmVSDs suitable for device closure were previously supposed as the only beneficiaries of this technique, but actually, some other patients could also take benefit from MIPDO. In our center, not like completely percutaneous closure, candidates for MIPDO procedure had following characteristics: (I) small age and low weight: which closely related to poor vascular condition and higher rate of vascular complications, empirically, we

Table 6 Peri-operational systemic condition between procedures in per-protocol population

	MIPDO (N=49)			Surgical (N=51)			P value ^a
	Baseline	Discharge ^b	P value	Baseline	Discharge	P value	
WBC (10 ⁹ /L)	8.06±2.35	8.50±2.83	0.26	8.92±2.71	10.86±3.39	<0.001	<0.001
Hb (g/L)	119.46±12.23	108.94±13.49	<0.001	120.54±16.23	105.58±13.87	<0.001	0.22
PLT (10 ⁹ /L)	299 (260 to 331)	249 (188 to 313)	<0.001	302 (255 to 366)	210 (167 to 238)	<0.001	0.002
ALT (IU/L)	14 (11 to 19)	12 (9 to 17)	0.005	16 (14 to 21)	15 (13 to 18)	0.03	0.11
AST (IU/L)	31 (27 to 38)	28 (22 to 34)	0.001	32 (26 to 38)	32 (27 to 42)	0.59	0.002
CK-MB (IU/L)	21 (4 to 29)	13 (10 to 15)	<0.001	20 (6 to 25)	12 (10 to 16)	<0.001	0.23
CK (IU/L)	74 (49 to 102)	107 (66 to 160)	<0.01	91 (62 to 120)	267 (145 to 407)	<0.001	<0.001
LDH (IU/L)	240 (96 to 270)	242 (169 to 313)	0.001	219 (124 to 264)	340 (282 to 408)	<0.001	<0.001
Scr (μmol/L)	28.7 (25.2 to 32.3)	27.3 (22.9 to 32.8)	0.09	29.0 (22.7 to 37.6)	28.8 (21.9 to 36.7)	0.61	0.42
BUN (mmol/L)	4.01±1.23	4.21±1.25	0.24	3.68±1.09	5.00±1.68	<0.001	0.005

WBC, white blood cell count; Hb, hemoglobin; PLT, platelet count; ALT, alanine transaminase; AST, aspartate transaminase; CK-MB, creatine kinase-MB; CK, creatine kinase; LDH, lactate dehydrogenase; Scr, serum creatinine; BUN, blood urea nitrogen. ^acomparison of variation from baseline to discharge between groups; ^bmeasured at 3-day after procedure.

use '1 year' and '10 kg' as the thresholds; (II) VSD located close to the aortic valve: compared with percutaneous method, the direct vision and easier manipulation of MIPDO method could help to locate the device more precisely, which to some extent might decrease the device/operation-related complications (including valve injury and arrhythmia), empirically, we use the distance of '2 mm' as the threshold (21-23); (III) patients with contraindications to medical radiation or contrast agents: attributed to the intraoperative TEE guidance, good controllability could be achieved in MIPDO method, which might be the gospel for such patients; (IV) willingness of patients or their legal guardians: last but not least, some patients (or their legal guardians) in China are prudent and conservative, they tend to choose a procedure 'preparing for more eventualities'. In current study, patients were enrolled with a wide range of ages and had both restrictive and non-restrictive pmVSDs. Actually, we performed MIPDO closure for 9 patients less than 1-year-old, 27 patients with small distance between VSD and aortic valve (<2 mm) and 2 patients with contraindications to the contrast agents. Valve dysfunction and arrhythmias (complete atrioventricular block was the most serious while right bundle branch block was the most common) were usually reported as main complications associated with percutaneous VSD closure (24-26). Nevertheless, in this study, no valve dysfunction was revealed and only 1 case of left anterior fascicular block

(reverted to normal within 6-month after operation) was reported in patients undergoing MIPDO procedure.

On the other hand, the MIPDO procedure shows superiority to the surgery in terms of minimal invasion. Although without extra oral digitalis and diuretic drugs for 3 months like the surgical group, the MIPDO group showed comparable perioperative cardiac performance including the postoperative diminution of left atrial diameter, left ventricular end-diastolic dimension and right ventricular diameter, these immediate outcomes of MIPDO were consistent with the expected hemodynamic change: once the VSD was closed, the overloaded right ventricle and left atrium would tend to become normalized and initiate structural remodeling. Furthermore, patients in the MIPDO group showed minor elevation of WBC, CK, LDH and BUN, outgrowth of slighter inflammatory response (27) and milder renal function impairment (28,29). Although patients in MIPDO group were prescribed with heparin and oral aspirin, they presented similar or even less variation in PLT compared with surgical groups.

What should be mentioned was that the continuous downtrend of cardiac index (CI) was observed in both groups during the first 3-month follow-up. Although the declination of CI was frequently attributed to the perioperative impairment of the myocardial function (30), we speculated that the elevated efficiency of the heart pump might be also a reasonable explanation, and the

TTE at both resting and with workload might provide more comprehensive information. Another unexpected phenomenon was the paradoxical post-procedural decline of enzymes (ALT, CK-MB in both groups and AST in MIPDO group), which might be attributed to the perioperative application of cardioprotectants and liver-protecting drugs.

Potential limitations of present trial emerged during result interpretation. Firstly, we speculated that evaluation of cardiac performance with workload might be important supplement to present study, since the VSD closure and the perioperative stress might cast contradictory influence toward the hemodynamic status. Secondly, perioperative management was different between groups in accordance with the routine of participating centers, although designed for better reflection of the real world and avoidance of unnecessary adverse drug reactions (such as electrolyte imbalance or conduction block), it might induce some bias. Also, the larger sample size and longer-term follow-up are needed for more robust evidence.

Conclusions

In patients with pmVSDs, MIPDO method showed non-inferiority to surgical closure in efficacy for both ITT and PP population with easier perioperative recovery, economic benefit and promising outcomes.

Acknowledgments

Funding: This work was supported by the National Key Research and Development Program of China (2016YFC1302004), National Natural Science Foundation of China (81670289), CAMS Innovation Fund for Medical Sciences (2017-I2M-4-001) and Medical Science and Technology Project of Henan Province and Ministry Co-construction (SB201902031).

Footnote

Reporting Checklist: The authors have completed the CONSORT reporting checklist. Available at <http://dx.doi.org/10.21037/jtd-20-3298>

Data Sharing Statement: Available at <http://dx.doi.org/10.21037/jtd-20-3298>

Conflicts of Interest: All authors have completed the ICMJE

uniform disclosure form (available at <http://dx.doi.org/10.21037/jtd-20-3298>). The authors have no conflicts of interest to declare.

Ethical Statement: The authors are accountable for all aspects of the work in ensuring that questions related to the accuracy or integrity of any part of the work are appropriately investigated and resolved. The study was conducted in accordance with the Declaration of Helsinki (as revised in 2013). The study was approved by the Ethics Committee of Fuwai Hospital, Beijing, China (No. 2015-707) and informed consent was taken from all the patients.

Open Access Statement: This is an Open Access article distributed in accordance with the Creative Commons Attribution-NonCommercial-NoDerivs 4.0 International License (CC BY-NC-ND 4.0), which permits the non-commercial replication and distribution of the article with the strict proviso that no changes or edits are made and the original work is properly cited (including links to both the formal publication through the relevant DOI and the license). See: <https://creativecommons.org/licenses/by-nc-nd/4.0/>.

References

1. Roos-Hesselink JW, Meijboom FJ, Spitaels SE, et al. The outcome of patients after surgical closure of ventricular septal defect at a young age: longitudinal follow-up of 22-34 years. *Eur Heart J* 2004;25:1057-62.
2. Zhao LJ, Han B, Zhang JJ, et al. Postprocedural outcomes and risk factors for arrhythmias following transcatheter closure of congenital perimembranous ventricular septal defect: a single-center retrospective study. *Chin Med J (Engl)* 2017;130:516-21.
3. Schipper M, Sliker MG, Schoof PH, et al. Surgical repair of ventricular septal defect; contemporary results and risk factors for a complicated course. *Pediatr Cardiol* 2017;38:264-70.
4. Omelchenko AY, Zhuang Z, Schreiber C, et al. Surgical off-pump closure of perimembranous ventricular septal defects. *Asian Cardiovasc Thorac Ann* 2014;22:31-5.
5. Heiberg J, Ringgaard S, Schmidt MR, et al. Structural and functional alterations of the right ventricle are common in adults operated for ventricular septal defect as toddlers. *Eur Heart J Cardiovasc Imaging* 2015;16:483-9.
6. Holzer R, de Giovanni J, Walsh KP, et al. Transcatheter closure of perimembranous ventricular septal defects using the Amplatzer membranous VSD occluder: immediate

- and midterm results of an international registry. *Catheter Cardiovasc Interv* 2006;68:620-8.
7. Fu YC, Bass J, Amin Z, et al. Transcatheter closure of perimembranous ventricular septal defects using the new Amplatzer membranous VSD occluder: results of the U.S. phase I trial. *J Am Coll Cardiol* 2006;47:319-25.
 8. Zeng XJ, Sun SQ, Chen XF, et al. Device closure of perimembranous ventricular septal defects with a minimally invasive technique in 12 patients. *Ann Thorac Surg* 2008;85:192-4.
 9. Xing Q, Wu Q, Shi L, et al. Minimally invasive transthoracic device closure of isolated ventricular septal defects without cardiopulmonary bypass: long-term follow-up results. *J Thorac Cardiovasc Surg* 2015;149:257-64.
 10. Ou-Yang WB, Li SJ, Wang SZ, et al. Echocardiographic guided closure of perimembranous ventricular septal defects. *Ann Thorac Surg* 2015;100:1398-402.
 11. Schreiber C, Vogt M, Kühn A, et al. Perventricular closure of a perimembranous VSD: treatment option in selected patients. *Thorac Cardiovasc Surg* 2012;60:78-80.
 12. Aboulhosn J, Levi D, Sopher M, et al. Perventricular closure of a large ventricular septal defect in congenitally corrected transposition of the great arteries. *Congenit Heart Dis* 2010;5:60-5.
 13. Michel-Behnke I, Ewert P, Koch A, et al. Device closure of ventricular septal defects by hybrid procedures: a multicenter retrospective study. *Catheter Cardiovasc Interv* 2011;77:242-51.
 14. Chinese Association of Cardiovascular Surgeons. Chinese expert consensus statement on minimally invasive transthoracic device closure of ventricular septal defects. *Chin J Thorac Cardiovasc Surg* 2011;27:516-8.
 15. Zhang GC, Chen Q, Cao H, et al. Minimally invasive perventricular device closure of ventricular septal defect in infants under transthoracic echocardiographic guidance: feasibility and comparison with transesophageal echocardiography. *Cardiovasc Ultrasound* 2013;11:8.
 16. Xing Q, Pan S, An Q, et al. Minimally invasive perventricular device closure of perimembranous ventricular septal defect without cardiopulmonary bypass: multicenter experience and mid-term follow-up. *J Thorac Cardiovasc Surg* 2010;139:1409-15.
 17. Fang GH, Chen Q, Hong ZN, et al. The comparison of perventricular device closure with transcatheter device closure and the surgical repair via median Sternotomy for perimembranous ventricular septal defect. *Ann Thorac Cardiovasc Surg* 2018;24:308-14.
 18. Huang JS, Huang ST, Sun KP, et al. Health-related quality of life in children and adolescents undergoing intraoperative device closure of isolated perimembranous ventricular septal defects in southeastern China. *J Cardiothorac Surg* 2019;14:218-23.
 19. Chen Q, Hong ZN, Zhang GC, et al. Intraoperative device closure of isolated ventricular Septal defects: experience on 1,090 cases. *Ann Thorac Surg* 2018;105:1797-802.
 20. Sun Y, Zhu P, Zhou PY, et al. Intra-operative device closure of perimembranous ventricular septal defect without cardiopulmonary bypass under guidance of trans-epicardial echocardiography: a single center experience. *J Cardiothorac Surg* 2016;11:87.
 21. Congenital Heart Disease Committee, Chinese Pediatric Physicians Association, Chinese Medical Doctor Association; Subspecialty Group of Cardiology, the Society of Pediatrics, Chinese Medical Association; Editorial Board, Chinese Journal of Pediatrics. Expert consensus for the interventional treatment of pediatric congenital heart disease. *Chin J Pediatr* 2015;53:17-24.
 22. Walavalkar V, Maiya S, Pujar S, et al. Percutaneous device closure of congenital isolated ventricular septal defects: a single-center retrospective database study amongst 412 cases. *Pediatr Cardiol* 2020;41:591-8.
 23. Expert working group on interventional diagnosis and treatment of cardiovascular diseases through surgical approaches, National health commission of the People's Republic of China. Expert consensus for the interventional diagnosis and treatment of common cardiovascular diseases through surgical approaches. *Chinese Circulation Journal* 2017;32:105-19.
 24. Odemis E, Saygi M, Guzeltas A, et al. Transcatheter closure of perimembranous ventricular septal defects using Nit-Occlud((R)) Le VSD coil: early and mid-term results. *Pediatric cardiology* 2014;35:817-23.
 25. Landman G, Kipps A, Moore P, et al. Outcomes of a modified approach to transcatheter closure of perimembranous ventricular septal defects. *Catheter Cardiovasc Interv* 2013;82:143-9.
 26. Wu H, Qin Y, Zhao X, et al. Transcatheter closure of multi-hole perimembranous VSD with aneurysm: 3-year follow-up study. *Clin Res Cardiol* 2009;98:563-9.
 27. Lundin ES, Wodlin NB, Nilsson L, et al. Markers of tissue damage and inflammation after robotic and abdominal hysterectomy in early endometrial cancer: a randomised controlled trial. *Sci Rep* 2020;10:7226.
 28. Magden K, Yildirim I, Kutu M, et al. Recovery process in patients followed-up due to acute kidney injury.

- Hippokratia 2013;17:239-42.
29. Gao J, Chen M, Wang X, et al. Risk factors and prognosis of acute kidney injury in adult hospitalized patients: a two-year outcome. *Minerva Urol Nefrol* 2015;67:179-85.
30. Liu H, Lu FX, Zhou J, et al. Minimally invasive perventricular versus open surgical ventricular septal defect closure in infants and children: a randomised clinical trial. *Heart* 2018;104:2035-43.

Cite this article as: Lu W, Zhang F, Fan T, Zhao T, Han Y, Hu X, Li Q, Shi H, Pan X. Minimally-invasive-perventricular-device-occlusion versus surgical-closure for treating perimembranous-ventricular-septal-defect: 3-year outcomes of a multicenter randomized clinical trial. *J Thorac Dis* 2021;13(4):2106-2115. doi: 10.21037/jtd-20-3298