



The Brazilian Journal of INFECTIOUS DISEASES

www.elsevier.com/locate/bjid



Original article

Risk factors for mortality in patients with ventilator-associated pneumonia caused by carbapenem-resistant Enterobacteriaceae



Felipe F. Tuon^{a,b,*}, Maria Esther Graf^{a,c}, Alexandre Merlini^b, Jaime L. Rocha^{a,d}, Suellen Stallbaum^b, Lavinia N. Arend^e, Roberto Pecoit-Filho^a

^a Pontifícia Universidade Católica do Paraná, Faculdade de Medicina, Curitiba, PR, Brazil

^b Hospital Universitário Evangélico de Curitiba, Divisão de Doenças Infecciosas e Parasitárias, Curitiba, PR, Brazil

^c Pontifícia Universidade Católica do Paraná, Hospital Universitário Cajuru, Divisão de Doenças Infecciosas e Controle de Infecções, Curitiba, PR, Brazil

^d Frischmann Aisengart/DASA Medicina Diagnóstica, Divisão de Microbiologia, Curitiba, PR, Brazil

^e Laboratório Central do Estado do Paraná (LACEN-PR), Curitiba, PR, Brazil

ARTICLE INFO

Article history:

Received 30 October 2015

Accepted 18 September 2016

Available online 4 November 2016

Keywords:

Carbapenemase-producing *Klebsiella pneumoniae*

Ventilator-associated pneumonia

Risk factors

Mortality

Treatment

ABSTRACT

Background: The ideal therapeutic option for ventilator associated pneumonia caused by carbapenem-resistant Enterobacteriaceae is not defined. The aim of this study was to assess mortality-associated risk factors in patients with VAP by CRE and determine the outcome of several treatment options.

Methods: This was a retrospective study performed in two tertiary hospitals involving patients with VAP caused by CRE between January 2010 and August 2014. The outcomes were mortality within 30 days of VAP diagnosis and overall mortality during hospital admission. Risk factors for mortality were assessed by comparing variables of survivors and non-survivors.

Results: One hundred and twelve patients with CRE-VAP were included, 73 (65%) male, median age 56 years. The 30-day mortality was 57.1% and the overall hospital mortality was 67%. In the binary logistic regression analysis, only age >50 years was independently associated to increased mortality. Polymyxin was the most used drug (47.5%), followed by tigecycline (29.2%) and aminoglycosides (2.4%). Combined therapy with two active drugs was used by 17 patients (20.8%). No therapeutic option was independently associated to survival. However, combined therapy with two active drugs was superior to the therapy with a single active drug when inappropriate therapy was the comparator ($p=0.044$). The addition of carbapenem was not associated with increased survival.

Conclusion: The best therapeutic option for VAP by CRE is still not completely defined, but the therapy with at least two active drugs was superior in this study.

© 2016 Sociedade Brasileira de Infectologia. Published by Elsevier Editora Ltda. This is an open access article under the CC BY-NC-ND license (<http://creativecommons.org/licenses/by-nc-nd/4.0/>).

* Corresponding author.

E-mail address: flptuon@gmail.com (F.F. Tuon).

<http://dx.doi.org/10.1016/j.bjid.2016.09.008>

1413-8670/© 2016 Sociedade Brasileira de Infectologia. Published by Elsevier Editora Ltda. This is an open access article under the CC BY-NC-ND license (<http://creativecommons.org/licenses/by-nc-nd/4.0/>).

Introduction

Emergence of *Klebsiella pneumoniae* carbapenemase (KPC) among Enterobacteriaceae has severely challenged antimicrobial therapy, as it provides high-level resistance to all beta-lactams and distinct levels of resistance to carbapenems.¹ The best therapy for carbapenem-resistant Enterobacteriaceae (CRE) is not well defined in medical literature. Some authors have suggested combined therapy based on few retrospective clinical studies, as well as *in vitro* and *in vivo* models.^{2,3}

Polymyxins, aminoglycosides, and tigecycline have been used as core treatment drugs, considering local susceptibility patterns.^{4,5} Other drugs may be suggested according to infection site, such as fosfomycin for urinary tract infection.⁶ Ventilator-associated pneumonia (VAP) is still one of the main infections in intensive care units. Microbiological etiology of VAP widely varies according to local epidemiology. The incidence of CRE has increased in Southern Brazil, mainly associated with VAP.^{7,8} Studies on the treatment of CRE causing VAP (CRE-VAP) are scarce, only case reports and small series are available.⁹⁻¹¹ Risk factors associated with mortality and the optimal treatment of CRE-VAP are not well-established. The main objective of this study was to describe risk factors associated with CRE-VAP mortality. Secondary objective was to determine the outcome with different antibiotic regimens.

Methods

Study design

A cross-sectional study was carried out at two tertiary-care, trauma and surgery reference hospitals, in South of Brazil, with a total number of 870 beds and 58 intensive care unit beds. All patients aged ≥ 16 years with VAP caused by CRE in the period from January 2010 to August 2014 were included in the study. Only the first episode of each patient was analyzed. Data were collected from medical charts and/or hospital computer system databases. This study was approved by the Ethics Committee of FEPAR (42918014.1.0000.0103).

Microbiological procedures

All included patients had positive quantitative cultures for CRE obtained from the respiratory tract through bronchoalveolar lavage (BAL) ($>10^4$ CFU/mL) or tracheal aspiration ($>10^6$ CFU/mL). The BAL methodology was previously described by our study-group.¹²

All identified bacteria were tested for susceptibility by disk diffusion method and/or Gram-negative card for automated method according to the CLSI guidelines.¹³ Minimal inhibitory concentration (MIC) was determined by automated method in mg/L (Vitek 2[®], Biomérieux, Marcy-L'Étoile, France) and/or E-test method, as recommended. Screening for CRE was performed with modified Hodge's test according to CLSI.¹³ Modified Hodge's test positive isolates were submitted to PCR for *bla*_{KPC} amplification using Easy Q KPC (Biomérieux, Marcy-L'Étoile, France) with *Escherichia coli* ATCC 25922 and

*bla*_{KPC}-carrying *K. pneumoniae* strain ATCC BAA-1705 as negative and positive controls, respectively.¹⁴ Briefly, the amplified product was purified using Exonuclease I and Shrimp Alkaline Phosphatase (ExoSAP, USB Corporation) for DNA sequencing. Sequencing reactions were performed using BigDye v1.1 Sequencing Kits (Applied Biosystems, Foster City, CA, USA). Sequence data were acquired on ABI 3100 (Applied Biosystems Inc., CA). The gene sequences were compared to entries in databases queried by NCBI BLAST (nucleotide sequence database; available at <http://www.ncbi.nlm.nih.gov/>).

Variables and definitions

VAP was defined according to CDC criteria.¹⁵ Other criteria, such as diagnostic scores/indexes or clinical impression were excluded. Patients with concomitant infections were excluded. Secondary bacteremia was not evaluated. Potential risk factors assessed were: age, gender, Charlson comorbidity index (and all comorbidities were evaluated separately),¹⁶ APACHE II,¹⁷ burn, HIV infection, chronic corticoid use, trauma on admission, elective or emergency surgery, length of hospitalization and mechanical ventilation duration before VAP, and previous antibiotic use during current hospitalization. Risk was neither adjusted for sepsis nor pneumonia severity scores.

Antimicrobial therapy

Antimicrobial treatment was deemed inappropriate if antibiotics initially prescribed were not active against the identified pathogens based on *in vitro* susceptibility testing. Appropriate therapy was defined by active drug use with adequate schedule in two situations for additional analysis: antibiotic started within the first 24 h with no switches; and treatment adjustment within five days (arbitrarily defined considering average time of culture results). For analysis of different antibiotics schedules, the term monotherapy was used when a single drug was active against CRE and combined therapy whenever two or more drugs were active considering *in vitro* susceptibility. The dose of antibiotics was also evaluated. Polymyxin B was used without loading dose and renal adjustment (30,000 IU/kg); meropenem dose ranged from 1 g to 2 g each 8 h with renal adjustment; tigecycline is used with doubled dose (100 mg q12 h) without renal adjustment; amikacin dose was 15 mg/kg without loading dose and renal adjustment.

Statistical analysis

All statistical analyses were carried out using SPSS 18.0. Bivariate analysis was performed separately for each variable. *p*-Values were calculated using the χ^2 test or Fisher's exact test for categorical variables and Student's *t*-test or Wilcoxon rank-sum test for continuous variables. Variables for which the *p*-value was ≤ 0.10 in the univariate analysis were included in a logistic regression model. A *p*-value of 0.05 was set as the limit for acceptance or removal of the new terms in the model. Goodness-of-fit was assessed by Hosmer-Lemeshow test. Thirty-day mortality curves were constructed and

Gehan-Breslow-Wilcoxon test was performed. All tests were two-tailed, and a p -value ≤ 0.05 was considered significant.

Results

A total of 112 patients with CRE-VAP were included in the study, with 102 cases of *K. pneumoniae* and 10 cases of *Enterobacter aerogenes*. Male was the predominant gender ($n=73$, 65.2%) and global mean age was 54.9 ± 20.7 years-old (median = 56). The mean hospital stay was 47.7 ± 57.6 days (median = 31 days), mean duration of hospitalization before CRE-VAP 18.6 ± 21.0 days (median = 14 days). The mean ICU stay after CRE-VAP was 14.8 ± 8.3 days (median = 10 days). The Charlson index was low (mean = 1.55 ± 2.36). Data are detailed in Table 1.

Thirty-day mortality was 57.1% (64/112) for all CRE-VAP patients and in-hospital global mortality was 67.0% (75/112). Aging, high Charlson index, chronic renal failure, systemic arterial hypertension, neoplasm, and trauma on admission were the clinical findings associated with increased mortality. These data were evaluated in a binary logistic regression and only age > 50 years old was independently associated with increased mortality (Table 2).

Out of 112 patients, only 31 (27.7%) received at least one active drug within 24 h of VAP diagnosis (first clinical signs plus altered chest x-ray). After five days from the diagnosis, 83 patients (74.1%) received at least one active drug; 66 patients received one active drug and 17 (20.8%) received two active drugs for CRE-VAP. Polymyxin B (1,500,000 IU to 3,000,000 IU/day) was the preferred active drug (47.5%), followed by tigecycline (29.2%) and amikacin (1000 mg/day) (2.4%). From 17 patients with two active drugs, polymyxin B with tigecycline was the preferred combination (15/17). Despite of the high MIC for meropenem in all clinical samples from the respiratory tract (MIC ≥ 16 mg/L), meropenem was combined with at least one active drug in 49 patients (59.8%). One patient was treated with two carbapenems (ertapenem plus meropenem) with good clinical outcome. None of these therapeutic options were independently associated with survival. However, combined therapy (two active drugs) had significantly lower mortality than monotherapy (only one active drug) ($p=0.044$). Combination of meropenem was not associated with improved survival.

After culture results, 83 patients received adequate therapy (74%). From 29 patients (26%) who maintained inappropriate treatment after culture results, one third (nine patients) had progressed to death upon disclosure of culture result. Despite having a low Charlson index, the assessed patients had high APACHE II score, ranging from 9 to 33, mean and median of 26 and 27, respectively.

Considering the fact that age was an independent mortality risk factor and combination therapy was a protective factor, age was dichotomized (≥ 50 years old and <50 years old), according to mortality and antibiotic adequacy. Antibiotic adequacy did not change mortality in patients with ≥ 50 or <50 years old.

Survival analysis confirmed the aforementioned findings. Combined therapy showed higher survival rate than inappropriate therapy ($p=0.032$) whereas survival of those with

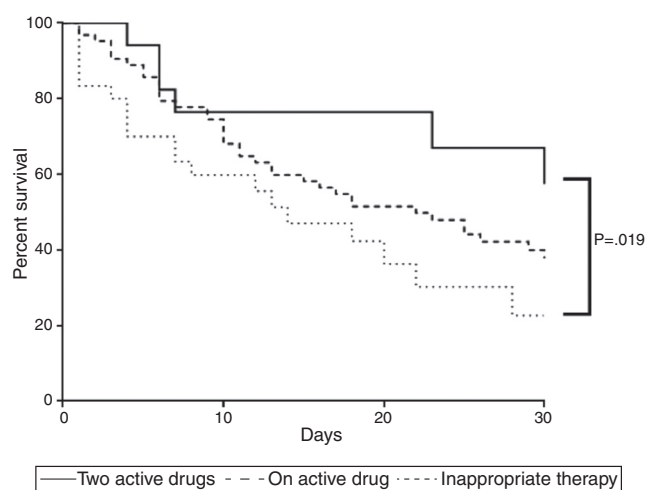


Fig. 1 – Mortality curve of 112 patients with ventilator-associated pneumonia caused by Carbapenem-resistant Enterobacteriaceae. The curve compares mortality of patients receiving adequate therapy as monotherapy or combined as well as inadequate treatment. Two active drugs showed fewer deaths ($p < 0.05$).

monotherapy was similar to those who received no active drug ($p=0.129$) or combined therapy ($p=0.113$) (Fig. 1).

Discussion

KPC-producing *K. pneumoniae* is endemic in Southern Brazil and it is among the most common pathogens in intensive care units. Similar condition has occurred in Greece.¹⁰ This may be associated with poor assistance conditions and low healthcare professional qualification in the intensive units. In developed countries such situation is different and KPC is not as important as Gram-positive cocci (*Staphylococcus aureus*).¹⁸

Some small case series have been published, but not exclusively evaluating CRE-VAP. This is the first study to focus on risk factors for mortality associated with CRE-VAP. From the 112 assessed patients, 81 (72.3%) received inappropriate empirical treatment within 24 h. The most frequent empirical treatment was the use of carbapenem, considered inadequate, even in combined therapy, as none of the tested strains had a MIC < 8 mg/L. Probably due to increased MIC levels, we could not evidence superiority of carbapenem use in combined therapies.

Combination therapy was previously associated with better survival in a multivariate analysis of 41 patients with KPC bacteremia reported by Qureshi et al. The 28-day mortality was 13.3% in the combination therapy group compared to 57.8% in the monotherapy group ($p=0.01$).¹⁹ In a review article of case series of KPC infection treatment, Lee and Burgess have analyzed 38 articles with a total of 105 patients, of which 30% had KPC pneumonia. From the total evaluated patients, 47% received monotherapy and 53% received combination therapy, the global treatment failure rate was 36%. Among therapeutic failure cases, the pulmonary site was the most frequent (47%), followed by bacteremia (39%). In our study, more treatment

Table 1 – Risk factors analysis for ventilator-associated pneumonia caused by Carbapenem-resistant Enterobacteriaceae.

Continuous variables	Death (n = 64)		Survival (n = 48)		p-Value
	Mean ^a	SD ^c	Mean	SD	
Age	61.7	19.0	45.9	19.6	<0.001 ^f
ICU total admission	14.1	11.1	15.9	28.5	0.657
VM days	14.1	11.1	15.2	28.4	0.781
Total admission (days)	30.3	16.6	70.9	81.1	<0.001 ^f
Days before VAP	19.0	13.0	18.1	28.6	0.826
Days after VAP	11.3	9.4	52.8	59.5	<0.001 ^f
Charlson index	2.1	2.5	0.8	1.6	0.003 ^f
APACHE	26.1	5.5	26.5	4.7	0.702
Categorical variables	n ^b	%	n	%	p-Value
Gender (male)	39	60.9%	35	72.9%	0.109
Burn	2	3.1%	4	8.3%	0.209
HIV infection	1	1.6%	1	2.1%	0.671
Diabetes	10	15.6%	3	6.3%	0.122
Diabetes with complications	6	9.4%	2	4.2%	0.257
Chronic renal failure	8	12.5%	1	2.1%	0.046 ^f
Previous myocardial infarction	9	14.1%	6	12.5%	0.533
Congestive heart failure	7	10.9%	2	4.2%	0.177
Peripheral artery disease	2	3.1%	0	0.0%	0.329
Previous stroke	10	15.6%	3	6.3%	0.122
Previous stroke with plegia	1	1.6%	1	2.1%	0.671
Dementia	3	4.7%	2	4.2%	0.641
COPD	4	6.3%	2	4.2%	0.492
Hypertension	31	48.4%	12	25.0%	0.011 ^f
Neoplasm	9	14.1%	1	2.1%	0.028 ^f
Lymphoma	1	1.6%	0	0.0%	0.575
Leukemia	0	0.0%	0	0.0%	–
Metastatic tumor	5	7.8%	0	0.0%	0.059
Rheumatic disease	2	3.1%	1	2.1%	0.613
Peptic ulcer	0	0.0%	0	0.0%	–
Hepatic disease	2	3.1%	1	2.1%	0.613
Cirrhosis	0	0.0%	1	2.1%	0.425
Chronic corticoid use	3	4.7%	0	0.0%	0.187
Other immunosuppressants	6	9.4%	1	2.1%	0.121
Trauma on admission	26	40.6%	28	58.3%	0.041 ^f
Elective surgery	7	10.9%	5	10.4%	0.692
Emergency surgery	32	50.0%	29	60.4%	0.162
Treatment	n ^b	%	n	%	p-Value
Incorrect treatment <24 h	45	70.3%	36	75.0%	0.390
Correct treatment <24 h ^d	19	29.7%	12	25.0%	0.390
Incorrect treatment <5 days	18	28.1%	11	22.9%	0.298
Correct treatment <5 days	46	71.9%	37	77.1%	0.298
Monotherapy ^d	40	62.5%	26	54.2%	0.276
Combined therapy ^e	6	9.4%	11	22.9%	0.044 ^f

^a Mean of total deaths or survival.

^b Number of cases.

^c Standard deviation.

^d At least one active drug.

^e At least two active drugs.

^f $p < 0.05$.

failures were seen in cases treated with monotherapy than in those treated with combination therapy, but the small sample size precluded definitive conclusions. The most common successful regimen for treating pulmonary infections consisted of tigecycline plus colistin (8 patients), followed by aminoglycoside plus colistin (3 patients), but the overall failure rates were not significantly different in the three most commonly

used antibiotic combinations: polymyxin plus carbapenem, polymyxin plus tigecycline, polymyxin plus aminoglycoside (30%, 29%, and 25%, respectively, $p = 0.06$).

Clinical trials are recruiting patients in order to identify the best options, but the answer is still far away. The current concept is to associate antibiotics for CRE, which is based on retrospective studies showing reduced mortality.^{2,19,20}

Table 2 – Multivariate analysis of risk factors for ventilator-associated pneumonia caused by Carbapenem-resistant Enterobacteriaceae.

Variable	p-Value (univariate)	B	OR	CI (95%)	p-Value
Age > 50 years	0.003	0.11	3.39	1.27 9.17	0.016
Charlson index > 1	0.013	1.22	1.13	0.32 3.96	0.853
Chronic renal failure	0.046	0.11	0.90	0.34 2.38	0.825
Hypertension	0.011	2.14	8.55	0.78 94.21	0.080
Neoplasm	0.028	1.20	3.34	0.29 38.65	0.334
Trauma on admission	0.041	0.43	1.55	0.56 4.33	0.401

Oliveira et al. analyzed 118 patients with CRE infection and found polymyxin treatment as an independent risk factor associated with higher mortality. Combined therapy in such study was not superior to monotherapy, but monotherapy with carbapenem was protective. The authors discussed that changes in CLSI breakpoints of enterobacteria for carbapenems was based on *in vitro* data and that for clinical purposes, carbapenems could be active when MIC is between 1 and 4 mg/L. Furthermore, some authors have included a carbapenem as third drug in regimens with two active drugs when the MIC is less than 8 mg/L. However, no CRE showed this pattern in the present cases. This may be one of the explanations for ineffectiveness of carbapenems in terms of CRE-VAP survival.

A recent meta-analysis showed that carbapenem combination should be revised, once it does not decrease mortality and is a potential harm for patients, considering side effects, *Clostridium difficile* colitis, and resistance induction.²¹ In our study, none of the therapeutic combinations was independently associated with increased survival; however, combined therapy within five days, with at least two active drugs, was associated to a lower mortality ($p=0.044$).

Some limitations of our study included the lack of sepsis severity assessment upon onset of symptoms, evaluation of local complications, such as empyema and lung abscess, and drug dosage. Colistin and tigecycline require a loading dose, even with renal failure. Aminoglycosides serum levels are not routinely evaluated as well as daily dose adjustment of other drugs according to renal clearance. However, even in patients using the recommend dosage, most of them in intensive care units may not achieve adequate levels, despite pharmacodynamic characteristics (Cmax:MIC for aminoglycosides, AUC:MIC for colistin/polymyxin or T%:MIC for carbapenem) in approved FDA dosages.²² Tigecycline requires very low serum levels in order to be considered a safe drug in severe patients. Moreover, lung concentrations of all these drugs are not well known, even with perfect conditions of serum levels. Other limitation comes from the study design including only two hospitals. As it does not have external validity, we encourage other hospitals to compare combined therapy with monotherapy. The better outcome observed among patients receiving combined drugs until five days was interesting. It could mean that adding a second active drug could be recommended. Unfortunately, the small number of patients and the lack of robust data precluded us from performing a multivariate analysis.

Despite such limitations, our findings for VAP are in accordance with the current evidence, which points to better results with combined therapy for CRE severe infections.

In conclusion, patients with CRE-VAP treated with combined therapy with two active drugs within five days have lower mortality. In hospitals with high incidence of CRE, a combined therapy with two active drugs should be initiated until final culture results become available or further publications proving otherwise.

Ethical approval

This study was approved by the Ethics Committee of FEPAR (42918014.1.0000.0103).

Conflicts of interest

Felipe F. Tuon received grants from Pfizer, Novartis, Astellas and Teva in the last year.

Felipe F. Tuon is a CNPQ researcher.

Jaime L. Rocha received grants from Merck, Pfizer, Novartis, Sanofi and AztraZeneca in the last year.

Other authors declare no conflicts of interest.

Acknowledgement

Alexandre Zavascki for the comments and manuscript review.

REFERENCES

- Nordmann P, Naas T, Poirel L. Global spread of Carbapenemase-producing Enterobacteriaceae. *Emerg Infect Dis.* 2011;17:1791–8.
- Tumbarello M, Viale P, Viscoli C, et al. Predictors of mortality in bloodstream infections caused by *Klebsiella pneumoniae* carbapenemase-producing *K. pneumoniae*: importance of combination therapy. *Clin Infect Dis.* 2012;55:943–50.
- Toledo PV, Tuon FF, Arend L, Aranha Junior AA. Efficacy of tigecycline, polymyxin, gentamicin, meropenem and associations in experimental *Klebsiella pneumoniae* carbapenemase-producing *Klebsiella pneumoniae* non-lethal sepsis. *Braz J Infect Dis.* 2014;18:574–83.
- Lat A, Clock SA, Wu F, et al. Comparison of polymyxin B, tigecycline, cefepime, and meropenem MICs for KPC-producing *Klebsiella pneumoniae* by broth microdilution, Vitek 2, and Etest. *J Clin Microbiol.* 2011;49:1795–8.
- Castanheira M, Sader HS, Jones RN. Antimicrobial susceptibility patterns of KPC-producing or CTX-M-producing Enterobacteriaceae. *Microb Drug Resist.* 2010;16:61–5.

6. Tuon FF, Rocha JL, Formighieri MS, et al. Fosfomycin susceptibility of isolates with blaKPC-2 from Brazil. *J Infect.* 2013;67:247-9.
7. Toledo PV, Arend LN, Pilonetto M, Costa Oliveira JC, Luhm KR. Working Group in Healthcare Associated I. Surveillance programme for multidrug-resistant bacteria in healthcare-associated infections: an urban perspective in South Brazil. *J Hosp Infect.* 2012;80:351-3.
8. Ribeiro VB, Andrade LN, Linhares AR, et al. Molecular characterization of *Klebsiella pneumoniae* carbapenemase-producing isolates in southern Brazil. *J Med Microbiol.* 2013;62 Pt 11:1721-7.
9. Maltezou HC, Giakkoupi P, Maragos A, et al. Outbreak of infections due to KPC-2-producing *Klebsiella pneumoniae* in a hospital in Crete (Greece). *J Infect.* 2009;58:213-9.
10. Kontopidou F, Giamarellou H, Katerelos P, et al. Infections caused by carbapenem-resistant *Klebsiella pneumoniae* among patients in intensive care units in Greece: a multi-centre study on clinical outcome and therapeutic options. *Clin Microbiol Infect.* 2014;20:O117-23.
11. Daly MW, Riddle DJ, Ledebouer NA, Dunne WM, Ritchie DJ. Tigecycline for treatment of pneumonia and empyema caused by carbapenemase-producing *Klebsiella pneumoniae*. *Pharmacotherapy.* 2007;27:1052-7.
12. Tuon FF, Gortz LW, Penteado-Filho SR, Soltoski PR, Hayashi AY, Miguel MT. Bacteriological study of bronchoalveolar lavage in the antibiotic management of suspected ventilator-associated pneumonia of patients in surgical intensive care units. *Rev Col Bras Cir.* 2012;39:353-7.
13. CLSI (Clinical Laboratory Standard Institute). Performance standard for antimicrobial susceptibility testing; Twenty-third informational supplement; 2013.
14. Tuon FF, Rocha JL, Toledo P, et al. Risk factors for KPC-producing *Klebsiella pneumoniae* bacteremia. *Braz J Infect Dis.* 2012;16:416-9.
15. Horan TC, Andrus M, Dudeck MA. CDC/NHSN surveillance definition of health care-associated infection and criteria for specific types of infections in the acute care setting. *Am J Infect Control.* 2008;36:309-32.
16. Charlson ME, Pompei P, Ales KL, MacKenzie CR. A new method of classifying prognostic comorbidity in longitudinal studies: development and validation. *J Chronic Dis.* 1987;40:373-83.
17. Knaus WA, Draper EA, Wagner DP, Zimmerman JE. APACHE II: a severity of disease classification system. *Crit Care Med.* 1985;13:818-29.
18. Jones RN. Microbial etiologies of hospital-acquired bacterial pneumonia and ventilator-associated bacterial pneumonia. *Clin Infect Dis.* 2010;51 Suppl. 1:S81-7.
19. Qureshi ZA, Paterson DL, Potoski BA, et al. Treatment outcome of bacteremia due to KPC-producing *Klebsiella pneumoniae*: superiority of combination antimicrobial regimens. *Antimicrob Agents Chemother.* 2012;56:2108-13.
20. Gasink LB, Edelstein PH, Lautenbach E, Synnestvedt M, Fishman NO. Risk factors and clinical impact of *Klebsiella pneumoniae* carbapenemase-producing *K. pneumoniae*. *Infect Control Hosp Epidemiol.* 2009;30:1180-5.
21. Paul M, Carmeli Y, Durante-Mangoni E, et al. Combination therapy for carbapenem-resistant Gram-negative bacteria. *J Antimicrob Chemother.* 2014;69:2305-9.
22. Sun HK, Kuti JL, Nicolau DP. Pharmacodynamics of antimicrobials for the empirical treatment of nosocomial pneumonia: a report from the OPTAMA Program. *Crit Care Med.* 2005;33:2222-7.