

Research Paper

Clinical impact of high serum hepatocyte growth factor in advanced non-small cell lung cancer

Takahiro Tsuji¹, Yuichi Sakamori¹, Hiroaki Ozasa¹, Yoshitaka Yagi¹, Hitomi Ajimizu¹, Yuto Yasuda¹, Tomoko Funazo¹, Takashi Nomizo¹, Hironori Yoshida¹, Hiroki Nagai¹, Ken Maeno², Tetsuya Oguri², Toyohiro Hirai¹ and Young Hak Kim¹

¹Department of Respiratory Medicine, Kyoto University Graduate School of Medicine, Kyoto, Japan

²Department of Respiratory Medicine, Allergy and Clinical Immunology, Nagoya City University Graduate School of Medical Sciences, Nagoya, Japan

Correspondence to: Hiroaki Ozasa, email: ozahiro@kuhp.kyoto-u.ac.jp

Keywords: hepatocyte growth factor, non-small cell lung cancer, c-MET, cytotoxic chemotherapy

Received: December 22, 2016

Accepted: April 29, 2017

Published: May 16, 2017

Copyright: Tsuji et al. This is an open-access article distributed under the terms of the Creative Commons Attribution License 3.0 (CC BY 3.0), which permits unrestricted use, distribution, and reproduction in any medium, provided the original author and source are credited.

ABSTRACT

Activation of c-MET through hepatocyte growth factor (HGF) increases tumorigenesis, induces resistance, and is associated with poor prognosis in various solid tumors. However, the clinical value of serum HGF (sHGF) in patients with advanced non-small cell lung cancer (NSCLC), especially those receiving cytotoxic chemotherapy, remains unknown. Here, we show that sHGF may be useful to predict tumor response and progression-free survival (PFS) in patients with advanced NSCLC. A total of 81 patients with NSCLC were investigated. sHGF levels were evaluated using ELISA at 4 time-points: at pre-treatment, at response-evaluation (1–2 months after treatment initiation), at the best tumor response, and at disease progression. As a control biomarker, CEA was also evaluated in lung adenocarcinoma. Positive-sHGF at response-evaluation predicted poor PFS compared with Negative-sHGF in both first-line (median, 153.5 vs. 288.0; $P < 0.05$) and second-line treatment (87.0 vs. 219.5; $P = 0.01$). In 55 patients that received cytotoxic chemotherapy, multiple Cox proportional hazards models showed significant independent associations between poor PFS and Positive-sHGF at response-evaluation (hazard ratio, 4.24; 95% CI, 2.05 to 9.46; $P < 0.01$). Lung adenocarcinoma subgroup analysis showed that in patients receiving second cytotoxic chemotherapy, there were no significant differences in PFS between patients with low-CEA compared with those with high-CEA, but Positive-sHGF at pre-treatment or at response-evaluation predicted poor PFS (35.0 vs. 132.0; $P < 0.01$, 50.0 vs. 215.0; $P < 0.01$, respectively). These findings give a rationale for future research investigating the merit of sHGF as a potential clinical biomarker to evaluate HGF/c-MET activity, which would be useful to indicate administration of c-MET inhibitors.

INTRODUCTION

Hepatocyte growth factor (HGF) is a soluble ligand of the c-MET tyrosine kinase receptor. Activation of the HGF/c-MET signaling pathway contributes to the promotion of tumor cell motility, scattering, invasion, and metastasis, suggesting it to be a negative prognostic indicator for cell survival and recurrence in some solid tumors including lung cancer [1, 2].

Overexpression of both HGF and/or its receptor c-MET have been reported in non-small cell lung cancer (NSCLC) cell lines and patients [3–8]. Increased expression of HGF is associated with acquired resistance to EGFR-TKIs by bypass signaling via MAPK/ERK and PI3K/AKT pathways and by promoting clonal selection of subpopulations by c-MET amplification [9, 10]. Preclinical findings also showed that the aberrant c-MET/HGF pathway plays an important role in cytotoxic

chemotherapy (CC) resistance in small-cell lung cancer (SCLC) [11].

Activation of the HGF/c-MET pathway has been evaluated using serum or plasma HGF, because HGF is expelled from tumor cells to the extracellular matrix and blood plasma by a paracrine mechanism [12]. Increased serum HGF (sHGF) has been reported to be a negative prognostic marker in various malignancies including colorectal cancer, gastric cancer [13–15], prostate cancer [16], ovarian cancer [17], breast cancer [18, 19], glioma[20], melanoma [21], and multiple myeloma [22, 23]. Recently, a Spanish group reported that high sHGF in patients with SCLC predicts poor outcome and epithelial-mesenchymal transition (EMT) change in the tumor [24, 25].

We previously reported that lung cancer cell lines had increased expression of c-MET due to gene amplification-induced cytotoxic drug resistance, and that resistant cells paracrine HGF and promote its resistance [26]. However, the clinical significance of sHGF in patients with advanced or recurrent NSCLC, especially in patients treated with CC, is yet to be identified. Here we report a retrospective cohort study suggesting that sHGF concentration is a potential predictive biomarker for poor clinical outcome in patients with NSCLC.

RESULTS

sHGF in NSCLC patients and healthy controls

A total of 81 patients were investigated; 53 patients received first-line and 48 patients received second-line therapy. The median sHGF value at pre-treatment of first-line and second-line therapy were 0.41 and 0.33 ng/ml, respectively (Figure 1A). Then, thirty healthy controls were collected and matched to the current study population by smoking status, gender, and age (Table 1). Of the 30, two healthy controls (6.7%) had Positive-sHGF. The value was significantly higher in patients with NSCLC compared with healthy controls ($P < 0.01$, using the Mann-Whitney U test, Figure 1A). In 28 healthy controls with Negative-sHGF, the values were extrapolated using a calibration curve to consider the rationale of the cutoff value (0.3 ng/ml). The median value was 0.22 ng/ml and the mean \pm S.D. was 0.22 ± 0.05 ng/ml (Figure 1A).

sHGF trends in patients with NSCLC

In 53 patients receiving first-line therapy, Positive-sHGF was observed in 71.1%, 40.6%, 6.3%, and 54.8% at pre-treatment, response-evaluation, best response, and disease progression, respectively. sHGF concentration was significantly decreased at response-evaluation (median value (MV): under the limit of detection (LOD); $P < 0.01$) or at best response (MV: under the LOD; $P < 0.01$) compared with at pre-treatment (MV: 0.41 ng/ml). sHGF values at disease progression (MV: 0.33 ng/ml)

were significantly increased compared with those at best response ($P = 0.01$) (Figure 1B). In 48 patients receiving second-line therapy, a similar trend was observed (Figure 1C). sHGF was decreased at best response compared with pre-treatment (MV: under the LOD vs. 0.33; $P = 0.02$) and increased at disease progression compared with best response (MV: 0.36 vs. under the LOD; $P < 0.01$). Then, sHGF kinetics in patients whose best responses were PD was investigated. sHGF values at response-evaluation (when PD) were not significantly increased compared with pre-treatment, but the values before next treatment tended to be increased ($P = 0.06$, Supplementary Figure 2A–2C).

sHGF value was potentially associated with the best response

Trends of sHGF value according to the best response were presented in Figure 2A and 2B. sHGF level at response-evaluation was significantly higher in patients whose best responses were PD compared with those whose diseases were controlled (CR, PR, or SD) (Figure 2C and 2D). sHGF values in patients with PR/CR tended to be lower compared with patients with SD, but a significant difference was not detected (Figure 2A and 2B).

Positive-sHGF at response-evaluation predicted poor PFS in NSCLC

sHGF values at response-evaluation were obtained in 41 and 40 patients receiving first-line and second-line treatments, respectively (Table 2). PFS in Positive-sHGF patients was significantly shorter compared with Negative-sHGF patients in both first-line (Median PFS (days): 153.5 vs. 288.0; $P = 0.047$) and second-line (87.0 vs. 219.5; $P = 0.01$) treatments (Figure 2E and 2F). Patients with Positive-sHGF at diagnosis (pre-treatment of first-line) did not have significantly shorter PFS compared with patients with Negative-sHGF ($P = 0.82$) (Supplementary Figure 3C and 3D). In second-line treatment, the number of patients receiving EGFR-TKI was larger for Negative-sHGF compared with Positive-sHGF (Table 2). Subgroup analyses in both patients receiving EGFR-TKI and CC in second-line treatment showed that in both subgroups patients with Positive-sHGF tended to have shorter PFS (Supplementary Figure 4).

sHGF was a predictive factor for PFS in patients that received cytotoxic chemotherapy

Next, clinical impact of sHGF in patients that received CC was investigated. In this retrospective cohort, fifty-five patients received CC. Cox proportional hazards models showed univariate associations ($P < 0.2$) between poor PFS and five factors; Positive-sHGF at response-evaluation, ECOG performance status (PS),

EGFR-WT (or squamous cell carcinoma), second-line treatment, and monotherapy. A multivariate Cox proportional hazards model that included the five factors suggested that monotherapy and performance status were no longer significant factors (Supplementary Table 1). Monotherapy was highly correlated with second-line therapy ($P < 0.01$, Fisher's exact test, Supplementary Table 2). Then, the other four factors (sHGF, EGFR-WT, ECOG-PS, and second-line treatment) were included for the final multivariate Cox analysis, which detected a continued significant independent association between poor PFS and the sHGF value at response-evaluation

(hazard ratio, 4.24; 95% CI, 2.00 to 9.25; $P < 0.01$) (Table 3). The backgrounds of the patients are presented in Supplementary Table 2.

sHGF was a potential predictive factor for PFS in patients after cytotoxic chemotherapy

Then, the clinical significance of sHGF in second-line treatment after the first-line CC was investigated. Thirty patients subsequently received second-line treatment after progression in first-line CC (Supplementary Table 3). Positive-sHGF after first-line cytotoxic

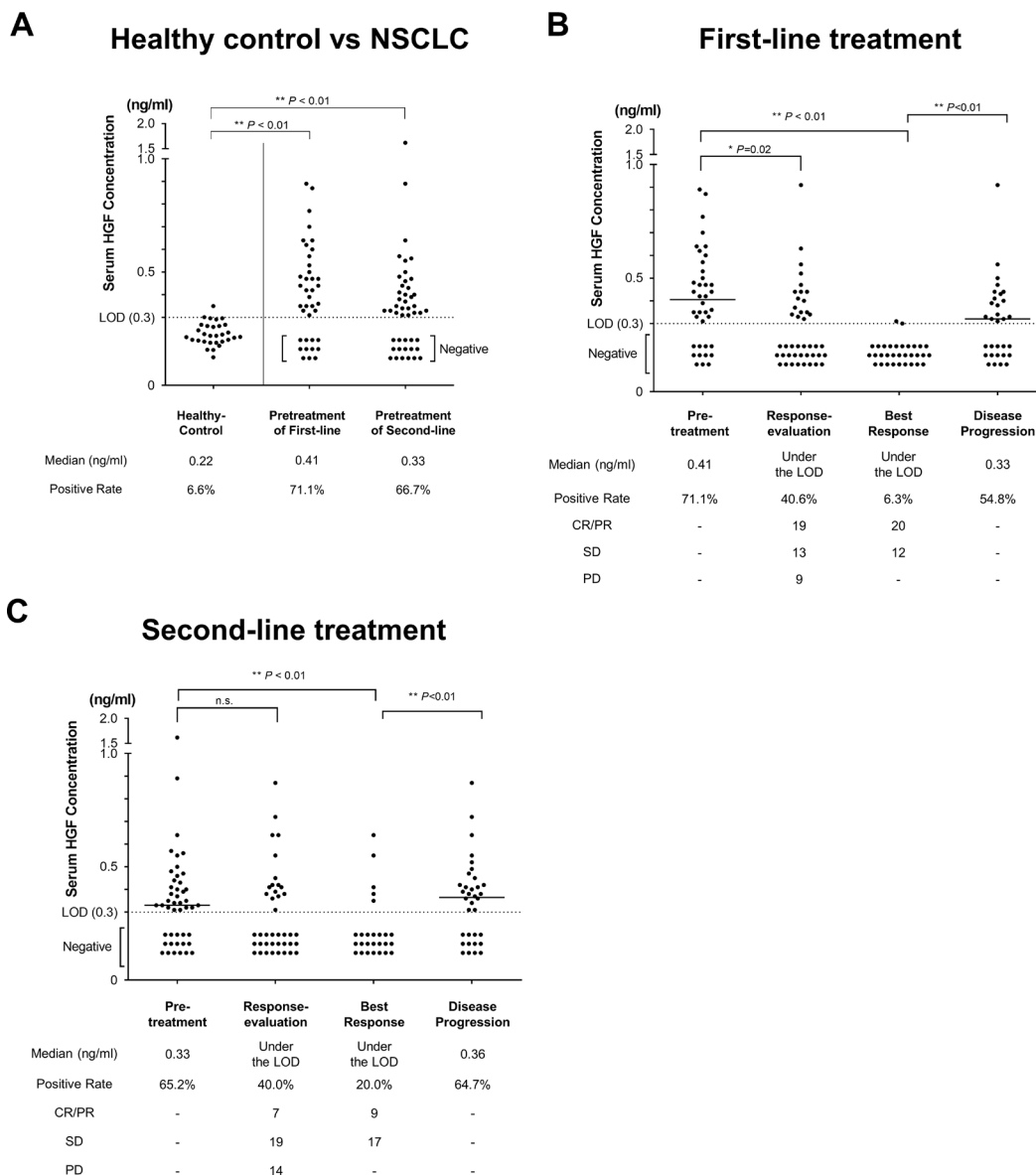


Figure 1: sHGF values in patients with NSCLC. (A) sHGF values in healthy controls and patients with NSCLC. In healthy controls, values under the limit of detection (0.3 ng/ml) were extrapolated using a calibration curve. (B, C) The change in sHGF values in patients with NSCLC receiving first-line treatment (B) and second-line treatment (C). Black dots show the concentration of sHGF at 4 time points during treatment. sHGF medians, the rates of Positive-sHGF at each time point (positive rate), and the objective response at each time point are indicated below. In all Figures, the Mann-Whitney U test was used for comparisons.

Table 1: Characteristics of healthy volunteers

		Healthy volunteer control	NSCLC pts in first-line therapy	<i>P</i> -value	NSCLC pts in second-line therapy	<i>P</i> -value
<i>N</i>		30	53		48	
Sex	Female	16 (46.7%)	24 (45.3%)	0.48	21 (43.8%)	0.41
Age yr. (mean ± S.D.)		63.8 ± 7.0	65.6 ± 9.3	0.42	64.5 ± 11.8	0.85
Smoking	Never	11 (36.7%)	22 (41.5%)	0.66	21 (43.8%)	0.54
	Smoker	19 (73.3%)	31 (58.5%)		27 (56.3%)	

The characteristics of the healthy volunteers in this study. Data are presented as numbers. *P*-values were calculated using the chi-square test or Student's *t*-test in categorical variables or continuous variables, respectively. NSCLC: non-small cell lung cancer; pts: patients.

chemotherapy (pretreatment of second-line therapy) predicted poorer PFS in second-line therapy compared with Negative-sHGF (median PFS, 98.0 vs. 215.0 days; HR, 2.05; *P* = 0.03 (logrank test), Figure 3A)

sHGF was a predictive factor for PFS in patients with lung adenocarcinoma receiving cytotoxic chemotherapy

Finally, PFS in patients with lung adenocarcinoma treated with CC was examined by using sHGF values and a control marker, CEA. There were no significant differences in PFS or HR between patients with high-CEA compared with low-CEA at any time-points during the treatment course (Figure 3D, Supplementary Figure 5). In contrast, Positive-sHGF in patients receiving second CC predicted poorer PFS compared with Negative-sHGF both at pretreatment (median PFS, 35.0 vs. 132.0 days; HR, 4.55; *P* = 0.01, Figure 3B and 3D), and at response-evaluation (median PFS, 50.0 vs. 215.0 days; HR, 14.3; *P* < 0.01, Figure 3C and 3D). In first CC, Positive-sHGF at response-evaluation tended to predict shorter PFS, but a significant difference was not detected (median PFS, 163.0 vs. 281.5 days, *P* = 0.11). (Supplementary Figure 6)

DISCUSSION

Here we reported that sHGF was associated with tumor response. Positive-sHGF at response-evaluation and at pre-treatment of the second CC also predicted poor PFS.

To date, the relationship between circulating HGF and clinical outcome has been reported in NSCLC. In early stage NSCLCs, sHGF was significantly higher compared with healthy controls [27] and predicted early recurrence after a standard operation [28, 29]. In patients treated with EGFR-TKIs, high circulating HGF predicted poor prognosis [30–33]. To the best of our knowledge, this is the first report to suggest the merit of sHGF as a potential biomarker in patients with advanced or recurrent NSCLC including populations receiving CC.

This trend of sHGF was concordant with the treatment effect (Figure 1B and 1C). Correspondingly, previous reports showed that the circulating HGF value was decreased after tumor resection in lung and breast cancer [18, 28], and was parallel with tumor response in SCLC [25]. sHGF protein is a tumor volume marker in patients with advanced or recurrent NSCLC. However, sHGF in patients with PD was not increased at response-evaluation and tended to be increased before the next treatment regimen, which suggested that the sHGF value was not just a volume marker.

Positive-sHGF at response-evaluation predicted early disease progression, but Positive-HGF at diagnosis did not. Similarly, previous reports showed that immunohistochemical overexpression of c-MET or high sHGF at diagnosis was not a prognostic factor in patients with NSCLC [31, 34]. As sHGF values correlate with tumor volume, the values at diagnosis would not predict early progression. In the current study, sHGF was potentially useful to predict PFS at a later time-point of the treatment course, although serum CEA was not (Figure 3C). It should be noted that Positive-sHGF can potentially identify treatment refractory patients at the start of the second CC. The sHGF value was not just a volume marker, but potentially predicted drug resistance.

Preclinical studies have explained the mechanism for increased sHGF in patients with poor PFS. HGF is a paracrine protein secreted by mesenchymal cells regulating cellular growth, motility, and morphogenesis, that acts as a multifunctional cytokine mainly in epithelial-origin cells [35]. Activation of HGF/MET autocrine in HGF- or MET-transgenic mice *in vivo* promoted hepatocarcinogenesis [36, 37]. We previously provided preclinical evidence that cytotoxic drug-resistant lung cancer cells secreted HGF and accelerated its resistance by increased expression of c-MET due to gene amplification, and that c-Met inhibitors restored cytotoxic drug sensitivity [26, 38]. A high sHGF value at later time-points of the treatment course would be associated with activity in the HGF/c-MET signaling pathway in the tumor.

For the clinical use of sHGF, it should serve as a marker for HGF/cMET activity. Companion diagnostics for MET inhibitors are needed, because a phase III trial failed to demonstrate that adding Onartuzumab, a

MET inhibitor, to erlotinib improves overall survival in patients with NSCLC, although phase II and preclinical studies have suggest promising effects [39–42]. To date, immunohistochemistry of c-MET or genetic tests of

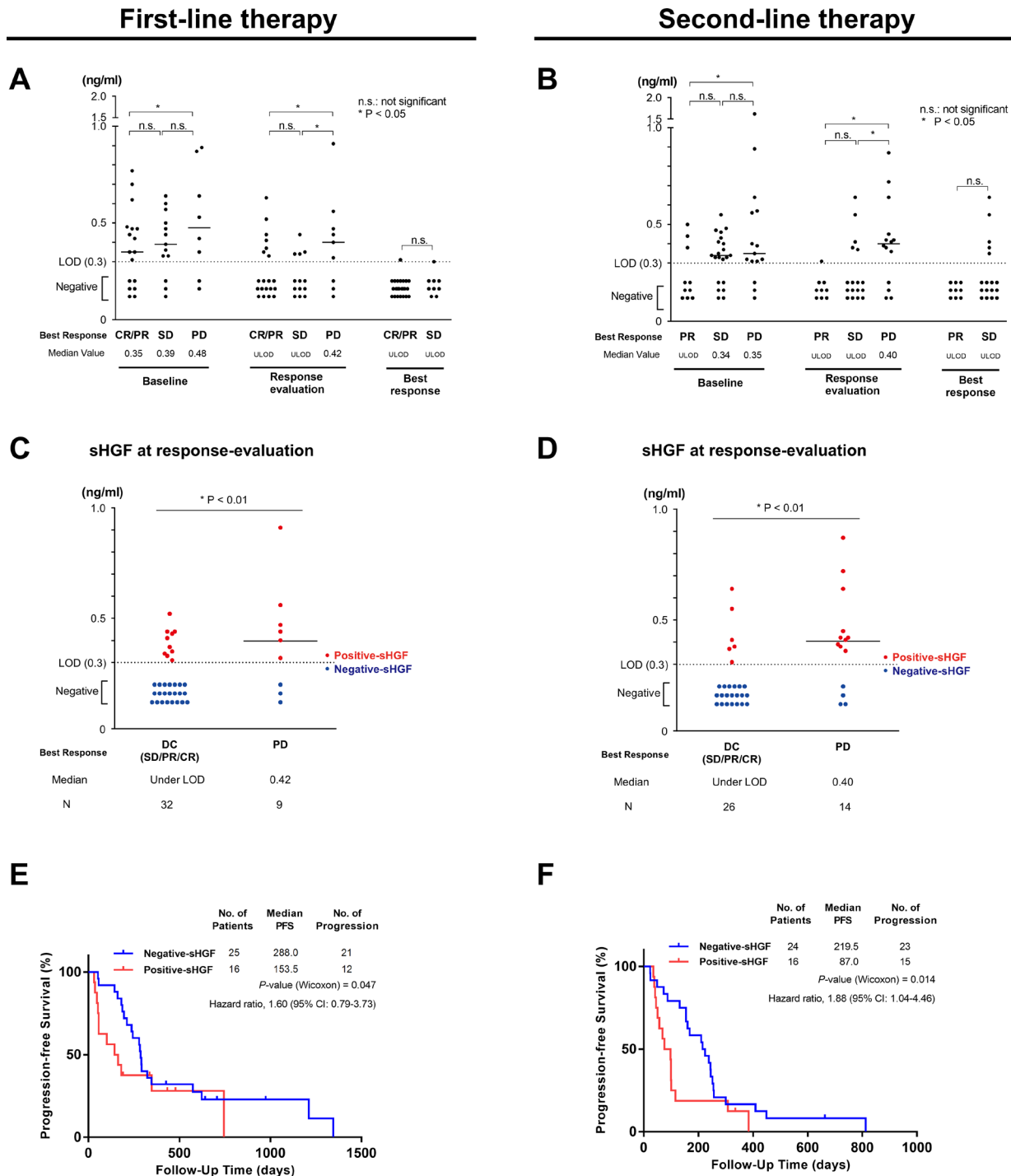


Figure 2: sHGF levels at response-evaluation predict progression-free survival. (A, B) sHGF values according to the best response in patients that received first-line (A) and second-line (B) therapy. The *P*-value was calculated using the Mann-Whitney *U* test. (C, D) Serum hepatocyte growth factor (sHGF) levels at response-evaluation according to the achieved best response in first-line treatment (C) and second-line treatment (D). Red or blue dots indicate the sHGF value in each group and the bars show the median value. The *P*-value was calculated using the Mann-Whitney *U* test. (E, F) A Kaplan-Meier curve for progression-free survival according to sHGF levels at response-evaluation in patients with NSCLC receiving first-line treatment (E) and second-line treatment (F). The *P*-value was calculated using the Gehan-Breslow-Wilcoxon test. DC: disease control; PD: progressive disease; LOD: limit of detection.

Table 2: Patients' characteristics in the current study

		First-line Treatment				Second-line Treatment			
		Total	Negative-sHGF at RE	Positive-sHGF at RE	P-value	Total	Negative-sHGF at RE	Positive-sHGF at RE	P-value
N		53	25	16		48	24	16	
Gender	Female	24 (45.3%)	14 (56.0%)	5 (31.3%)	0.20	21 (43.8%)	11 (45.8%)	8 (50.0%)	0.77
Age yr. (mean ± S.D.)		65.6 ± 9.3	64.8 ± 9.6	64.3 ± 9.6	0.88	64.5 ± 11.8	66.5 ± 11.2	59.1 ± 12.1	0.06
PS	≥ 2	6 (11.3%)	3 (12.0%)	1 (6.3%)	1.00	5 (10.4%)	2 (8.3%)	2 (12.5%)	1.00
	0–1	47 (88.7%)	22 (88.0%)	15 (93.8%)		43 (89.6%)	22 (91.7%)	14 (87.5%)	
Smoking	Never	22 (41.5%)	9 (36.0%)	6 (37.5%)	1.00	21 (43.8%)	15 (62.5%)	5 (31.3%)	0.11
	Smoker	31 (58.5%)	16 (64.0%)	10 (62.5%)		27 (56.3%)	9 (37.5%)	11 (68.8%)	
Histology	Ad	39 (73.6%)	20 (80%)	8 (50.0%)	0.11	41 (85.4%)	20 (83.3%)	13 (81.3%)	0.67
	Sq	10 (18.9%)	3 (12.0%)	6 (37.5%)		3 (6.3%)	2 (8.3%)	1 (6.3%)	
	Others	4 (7.6%)	2 (8.0%)	2 (12.5%)		4 (8.4%)	2 (8.3%)	2 (12.5%)	
EGFR mutation	Positive	23 (43.4%)	10 (40.0%)	5 (31.3%)	0.51	23 (47.9%)	15 (62.5%)	6 (37.5%)	0.19
	Wild type	26 (49.1%)	12 (48.0%)	10 (62.5%)		23 (47.9%)	8 (33.3%)	10 (62.5%)	
	Unknown	4 (7.6%)	3 (12.0%)	1 (6.3%)		2 (4.2%)	1 (4.2%)	0 (0%)	
Stage	IIIA	0 (0%)	0 (0%)	0 (0%)		3 (6.3%)	2 (8.3%)	1 (6.3%)	
	IIIB	4 (7.6%)	3 (12.0%)	0 (0%)		4 (8.3%)	1 (4.2%)	1 (6.3%)	
	IV	42 (79.3%)	17 (68.0%)	16 (100%)		35 (72.9%)	18 (75%)	12 (75.0%)	
	Recurrence	7 (13.2%)	5 (20%)	0 (0%)		6 (12.5%)	3 (12.5%)	2 (12.5%)	
Treatment	CC	36 (67.9%)	18 (72.0%)	13 (81.3%)	0.71	31 (64.6%)	11 (45.8%)	13 (81.3%)	*0.05
	EGFR-TKI	17 (32.1%)	7 (28.0%)	3 (18.8%)		17 (35.4%)	13 (54.2%)	3 (18.8%)	
Response	CR	1 (1.9%)	0 (0%)	0 (0%)		0 (0%)	0 (0%)	0 (0%)	
	PR	29 (54.7%)	13 (52.0%)	7 (43.8%)		11 (22.9%)	8 (33.3%)	1 (6.3%)	
	SD	14 (26.4%)	9 (36.0%)	3 (18.8%)		22 (45.8%)	12 (50.0%)	5 (31.3%)	
	PD	9 (17%)	3 (12.0%)	6 (37.5%)		15 (31.3%)	4 (16.7%)	10 (62.5%)	
ORR/DCR (best response)		56.6/83.0%	52.0/88.0%	43.8/62.5%		22.9/68.8%	33.3/83.3%	6.3/37.6%	

The characteristics of the patients with Positive-HGF and Negative-HGF at response-evaluation who received first-line or second-line therapy in this study. Data are presented as numbers. P-values were calculated using the Fisher's exact test or chi-square test, as appropriate, comparing Positive- and Negative-HGF patients. RE: response-evaluation; PS: performance status; Ad: adenocarcinoma; Sq: squamous cell carcinoma; LCC: large cell carcinoma; NSCLC: non-small cell carcinoma; EGFR: epidermal growth factor receptor; CC: cytotoxic chemotherapy; TKI: tyrosine kinase inhibitor; CR: complete response; PR: partial response; SD: stable disease; PD: progressive disease; ORR: objective response rate; DCR: disease control rate.

MET have been used to evaluate HGF-c-MET activity [43]. However, there are several problems with these methods; repeated biopsy or frequent monitoring are complicated, small biopsy specimens from one lesion may not detect dominant resistant mechanisms in the whole tumor [44], and there are few chances to perform a re-biopsy in patients receiving CC. sHGF values are easy to monitor and suitable for determining dominant molecular alterations in the whole tumor. We hypothesize that the sHGF value could be used as a simple and repeatable activity marker for the HGF/c-MET pathway and provide a supplemental marker to indicate re-biopsy demonstrating HGF/c-MET activation.

A limitation of this study is its retrospective design and small sample size. Unexpected confounding biases and the influence of data deficiency cannot be excluded. Due to the supportive results in univariate and multivariate analyses, we believe that any bias would not influence our findings. Another limitation is that the correlation between sHGF values and c-MET activation was not investigated because re-biopsy for patients treated with CC is unusual. In future, activation of c-MET in patients treated with CC and showing a high sHGF value may merit further prospective investigation. Finally, at present, there is no conventional threshold for Positive-sHGF concentrations in patients with NSCLC. In previous studies, the threshold

values for Positive-sHGF were approximately 1.9 ng/ml in SCLC [25], 2.4 ng/ml in gastric cancer [15], and 0.4 ng/ml in bladder cancer [45]. Mean sHGF values in healthy controls in previous reports also vary considerably (0.08 to 1.37 ng/ml) [25, 45–47]. In the current study, we used an ELISA kit which had been designed and approved for clinical use. The sHGF value in 200 Japanese healthy controls was reported as 0.19 ± 0.05 ng/ml (mean \pm S.D.) [45]. According to historical controls of this kit and our healthy control study, the cutoff value was equivalent

with an average $+1.6$ to $+2.2$ S.D. in healthy controls. The threshold might be different among tumor origins, histology, and the ELISA procedures. We believe that a standardized procedure and sharing of cutoff values is needed between clinics and translational laboratories.

In conclusion, the current study provided the first evidence that sHGF values were associated with the treatment response, and that the values at response-evaluation and at pre-treatment of the second CC are predictive markers of poor PFS in patients with NSCLC.

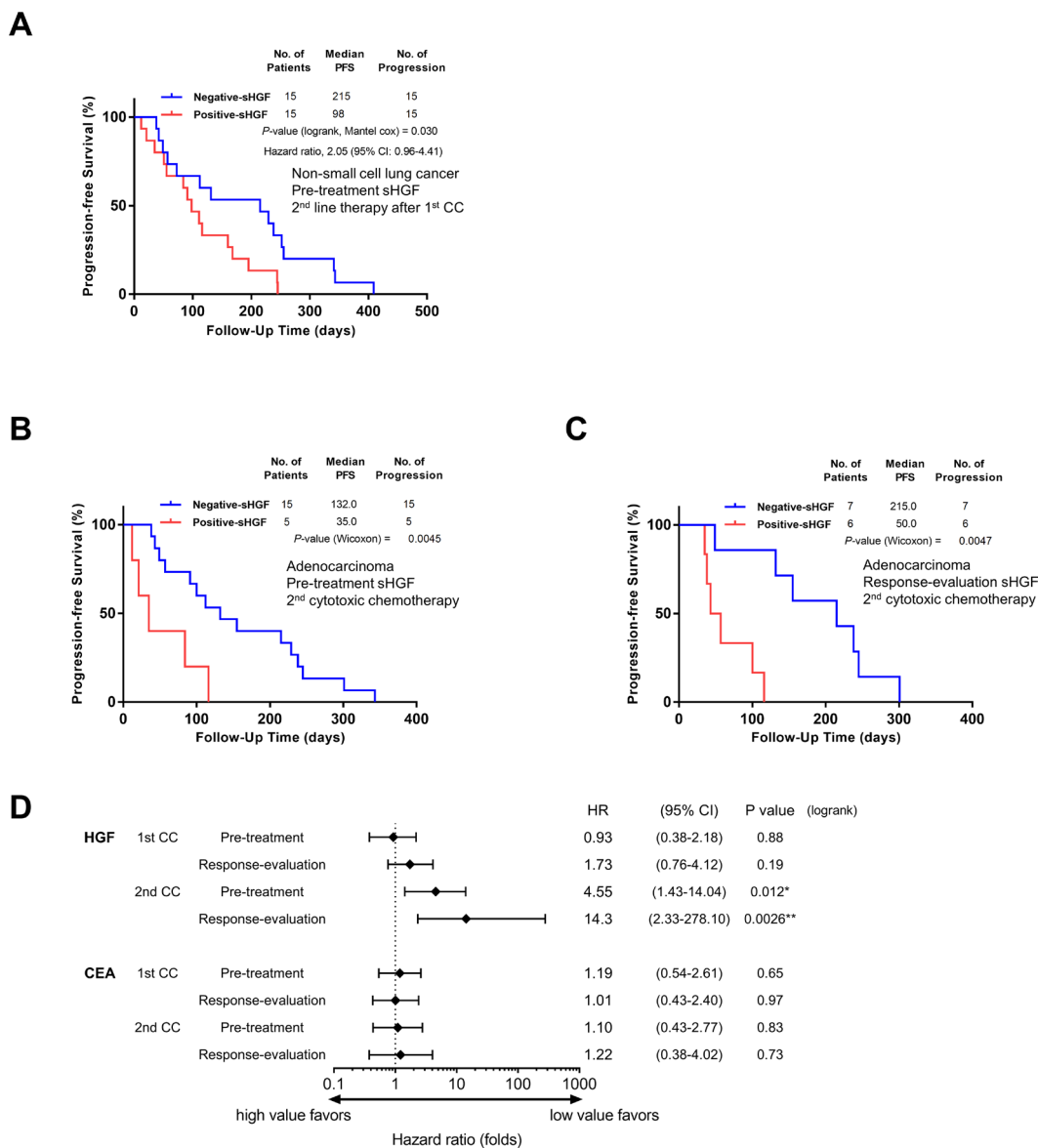


Figure 3: sHGF levels at a later time-phase predict progression-free survival in patients that received cytotoxic chemotherapy. (A) A Kaplan-Meier curve for progression-free survival according to sHGF levels in patients that received second-line treatment after progression during first-line cytotoxic chemotherapy. The *P*-value was calculated using the Gehan-Breslow-Wilcoxon test. (B, C) A Kaplan-Meier curve for progression-free survival according to sHGF levels at pre-treatment (B) and at response-evaluation (C) in patients with lung adenocarcinoma receiving second cytotoxic chemotherapy. The *P*-value was calculated using the Gehan-Breslow-Wilcoxon test. (D) The hazard ratios (HR) for progression (black squares) and 95% CIs (horizontal lines). The HRs and *P*-values were calculated using the logrank test. The patients' characteristics are presented in Supplementary Tables 4 and 5. HGF: hepatocyte growth factor; PFS: progression-free survival; 95% CI: 95 percent confidential interval; CC: cytotoxic chemotherapy; CEA: carcinoembryonic antigen.

Table 3: Univariate and multivariate analysis in patients that received cytotoxic chemotherapy using Cox proportional hazards model

Factor	Univariate analysis		Multivariate analysis	
	HR (95% CI)	P-value	HR (95% CI)	P-value
Gender (Male / Female)	0.9 (0.51–1.63)	0.73		
Age yr (≥ 65 / < 65)	0.82 (0.47–1.46)	0.51		
Smoking (Smoker / Never Smoker)	1.2 (0.67–2.21)	0.55		
ECOG-PS (PS ≥ 2 / PS 0–1)	4.12 (0.94–12.84)	*0.06	> 1.45 (0.32–4.85)	0.59
Stage (IV / recurrence / III)	0.6 (0.28–1.59)	0.28		
Histology (Non-ad / Ad)	1.48 (0.8–2.64)	0.21		
EGFR-status (Negative or Sq / mutant)	2.3 (1.09–5.66)	*0.03	> 5.96 (2.29–17.85)	* < 0.01
Monotherapy (Monotherapy / Platinum Doublet)	2.06 (1.09–3.78)	*0.03		
Second-line (2nd-line / 1st-line)	2.01 (1.12–3.63)	*0.02	> 2.11 (1.14–3.94)	*0.02
sHGF at pre-treatment (Positive / Negative)	1.25 (0.68–2.26)	0.45		
sHGF at response-evaluation (Positive / Negative)	2.1 (1.18–3.73)	*0.01	> 4.24 (2–9.25)	* < 0.01

HR: hazard ratio; ECOG: Eastern Cooperative Oncology Group; PS: performance status; Ad: adenocarcinoma; EGFR: epidermal growth factor receptor; Sq: squamous cell carcinoma.

These findings suggest future research investigating the merit of sHGF as a potential clinical biomarker to indicate administration of MET inhibitors in patients with NSCLC, or as a re-biopsy marker for patients treated with CC, may lead to the development of a new indicator of MET inhibitors and improve targeted therapies for lung cancer.

MATERIALS AND METHODS

Patients and clinical information

Between November 2013 and December 2015, serum samples from 81 patients with advanced cancer or receiving anticancer treatment were collected and cryopreserved at Kyoto University Hospital (Kyoto, Japan). Patients who were not evaluated objective response were excluded. Clinical information was obtained from electronic medical records at the institution. The study protocol had been prepared in accordance with the Declaration of Helsinki and was approved by the Kyoto University Graduate School and Faculty of Medicine Ethics Committee. All patients provided written informed consent for clinical investigation.

Measurement and assessment of sHGF and carcinoembryonic antigen (CEA)

Serum was immediately separated from blood samples by centrifugation at 4°C and cryopreserved at –80°C until assays were performed. sHGF levels were measured at a medical laboratory testing company, SRL (Tokyo, Japan), using an enzyme-linked immunosorbent assay (ELISA) kit (Otsuka Pharmaceutical, Tokyo, Japan),

which was designed and approved for use in diagnostic procedures. The mean \pm S.D. level of sHGF in 200 adult Japanese healthy controls was 0.19 ± 0.05 ng/ml and the lower limit of detection had been determined to be 0.3 ng/ml, according to the manufacturer’s data sheet [45]. sHGF values were categorized into 4 subgroups by time-points during the treatment; at pre-treatment, at response-evaluation (1–2 months after treatment initiation), at best tumor response, and at disease progression based on the Response Evaluation Criteria in Solid Tumors (RECIST) criteria ver. 1.1 [48]. As a control biomarker, the levels of serum CEA were also evaluated using ELISA. The values for sHGF were classified into 2 categories, Negative-sHGF and Positive-sHGF, with a threshold of 0.3 ng/ml since this is the lower limit of detection. The control biomarker, serum high-CEA, was defined in each subgroup as more than the median value of categorized subjects. First-line, second-line, first CC, and second CC treatments were defined in the conventional way (Supplementary Figure 1).

sHGF in healthy control

The blood samples of healthy controls had been obtained in Kyoto University Hospital from August 2012 to December 2015 from volunteers without history of malignancy or hepatic disease. The serum was immediately separated and cryopreserved at –80°C without any freeze-thaw cycle until the assay was conducted. From the serum library, 30 healthy controls that were matched to the current study population by smoking status, gender, and age were collected. The sHGF value was evaluated using the same procedure as used for patients with NSCLC. Written informed consent

had been obtained from these healthy controls at the time of blood sampling, and supplemental informed consent was obtained for using the serum in the current study. This healthy control study was also approved by the institutional ethics committee.

Subgroup analysis

To assess the trend of sHGF values in the treatment course and the association between sHGF and clinical outcome, all patients were included for analysis. To assess the clinical predictive value of sHGF with CEA, patients with lung adenocarcinoma were exclusively included, because CEA, the control tumor marker, is a marker for adenocarcinoma, but not for other histology types in lung cancer.

Statistical analysis

The efficacy was determined using the objective response rate (ORR), disease control rate (DCR), and PFS, in accordance with the RECIST criteria [48]. Differences in the distribution of variables were evaluated using Fisher's exact test or the chi-square test, as appropriate. sHGF values were not continuous variables and the difference was evaluated using the Wilcoxon matched-pairs signed rank test or the Mann-Whitney U test, as appropriate. PFS were estimated using the Kaplan–Meier Method, and survival curves were compared using the Gehan-Breslow-Wilcoxon or logrank test. Hazard ratios (HRs) and the corresponding 95% confidence intervals (CIs) for PFS were calculated using univariate analysis by the Cox proportional hazards model. In patients receiving cytotoxic chemotherapy, univariate Cox proportional hazards models were used to evaluate the associations between PFS and patient characteristics as follows; gender, age, smoking, ECOG performance status, stage, histology, EGFR-status, monotherapy, second-line treatment, and the sHGF value. Variables showing a univariate association with PFS (at $P < 0.20$) were included in stepwise multivariate Cox proportional hazards models. All tests were 2-sided, and a P -value of 0.05 was defined as significant. All statistical analyses were performed using JMP Pro version 12.0 (SAS Institute, Inc., Cary, NC, United States) and visualized by GraphPad Prism 6 (GraphPad software, La Jolla, CA, United States).

Abbreviations

HGF: hepatocyte growth factor; NSCLC: non-small cell lung cancer; PFS: progression-free survival; ELISA: enzyme-linked immunosorbent assay; CEA: carcinoembryonic antigen; LOD: limit of detection; HR: hazard ratio; TKI: tyrosine kinase inhibitor; EGFR: epidermal growth factor receptor; SCLC: small-cell lung cancer; RECIST: Response Evaluation Criteria in Solid Tumors; CC: cytotoxic chemotherapy; MV: median value.

Authors' contributions

T.T., Y.S., H.O., and Y.K. designed the study; T.T., Y.S., H.O., and Y.K. analysed and interpreted data; T.T. and H.O. drafted and wrote the main manuscript; T.T., Y.S., H.O., Y.Y., H.A., Y.Y., T.F., T.N., H.Y., H.N., K.M., T.O., T.H., and Y.K. revised and approved the article for important intellectual content; T.T., Y.S., H.O., H.A., T.N., H.N., and Y.K. provided the study materials or patients; and T.T., Y.S., H.O., Y.Y., H.A., Y.Y., T.F., T.N., H.Y., H.N., and Y.K. collected and assembled the data.

ACKNOWLEDGMENTS

The authors gratefully acknowledge the healthy control data collection by Dr. Ryo Tachikawa and Dr. Kazuo Chin, members of Department of Respiratory Medicine, Kyoto University Graduate School of Medicine, Kyoto, Japan.

CONFLICTS OF INTEREST

No potential conflicts of interest were disclosed.

FUNDING

No Funding.

REFERENCES

1. Trusolino L, Bertotti A, Comoglio PM. MET signalling: principles and functions in development, organ regeneration and cancer. *Nat Rev Mol Cell Biol.* 2010; 11:834–48. doi: 10.1038/nrm3012.
2. Sawada K, Radjabi AR, Shinomiya N, Kistner E, Kenny H, Becker AR, Turkyilmaz MA, Salgia R, Yamada SD, Vande Woude GF, Tretiakova MS, Lengyel E. c-Met Overexpression Is a Prognostic Factor in Ovarian Cancer and an Effective Target for Inhibition of Peritoneal Dissemination and Invasion. *Cancer Res.* 2007; 67:1670–9. doi: 10.1158/0008-5472.can-06-1147.
3. Siegfried JM, Weissfeld LA, Luketich JD, Weyant RJ, Gubish CT, Landreneau RJ. The clinical significance of hepatocyte growth factor for non-small cell lung cancer. *Ann Thorac Surg.* 1998; 66:1915–8.
4. Takanami I, Tanana F, Hashizume T, Kikuchi K, Yamamoto Y, Yamamoto T, Kodaira S. Hepatocyte growth factor and c-Met/hepatocyte growth factor receptor in pulmonary adenocarcinomas: an evaluation of their expression as prognostic markers. *Oncology.* 1996; 53:392–7.
5. Ma PC, Jagadeeswaran R, Jagadeesh S, Tretiakova MS, Nallasura V, Fox EA, Hansen M, Schaefer E, Naoki K, Lader A, Richards W, Sugarbaker D, Husain AN, et al. Functional expression and mutations of c-Met and its therapeutic inhibition with SU11274 and small interfering

- RNA in non-small cell lung cancer. *Cancer Res.* 2005; 65:1479–88. doi: 10.1158/0008-5472.can-04-2650.
6. Nakamura Y, Matsubara D, Goto A, Ota S, Sachiko O, Ishikawa S, Aburatani H, Miyazawa K, Fukayama M, Niki T. Constitutive activation of c-Met is correlated with c-Met overexpression and dependent on cell-matrix adhesion in lung adenocarcinoma cell lines. *Cancer Sci.* 2008; 99:14–22. doi: 10.1111/j.1349-7006.2007.00640.x.
 7. Nakamura Y, Niki T, Goto A, Morikawa T, Miyazawa K, Nakajima J, Fukayama M. c-Met activation in lung adenocarcinoma tissues: an immunohistochemical analysis. *Cancer Sci.* 2007; 98:1006–13. doi: 10.1111/j.1349-7006.2007.00493.x.
 8. Jiang WG, Martin TA, Parr C, Davies G, Matsumoto K, Nakamura T. Hepatocyte growth factor, its receptor, and their potential value in cancer therapies. *Crit Rev Oncol Hematol.* 2005; 53:35–69. doi: 10.1016/j.critrevonc.2004.09.004.
 9. Turke AB, Zejnullahu K, Wu YL, Song Y, Dias-Santagata D, Lifshits E, Toschi L, Rogers A, Mok T, Sequist L, Lindeman NI, Murphy C, Akhavanfard S, et al. Preexistence and clonal selection of MET amplification in EGFR mutant NSCLC. *Cancer Cell.* 2010; 17:77–88. doi: 10.1016/j.ccr.2009.11.022.
 10. Yano S, Wang W, Li Q, Matsumoto K, Sakurama H, Nakamura T, Ogino H, Kakiuchi S, Hanibuchi M, Nishioka Y, Uehara H, Mitsudomi T, Yatabe Y, et al. Hepatocyte growth factor induces gefitinib resistance of lung adenocarcinoma with epidermal growth factor receptor-activating mutations. *Cancer Res.* 2008; 68:9479–87. doi: 10.1158/0008-5472.can-08-1643.
 11. Gelsomino F, Rossi G, Tiseo M. MET and Small-Cell Lung Cancer. *Cancers (Basel).* 2014; 6:2100–15. doi: 10.3390/cancers6042100.
 12. Xie Q, Bradley R, Kang L, Koeman J, Ascierto ML, Worschech A, De Giorgi V, Wang E, Kefene L, Su Y, Essenburg C, Kaufman DW, DeKoning T, et al. Hepatocyte growth factor (HGF) autocrine activation predicts sensitivity to MET inhibition in glioblastoma. *Proc Natl Acad Sci U S A.* 2012; 109:570–5. doi: 10.1073/pnas.1119059109.
 13. Tanaka K, Miki C, Wakuda R, Kobayashi M, Tonouchi H, Kusunoki M. Circulating level of hepatocyte growth factor as a useful tumor marker in patients with early-stage gastric carcinoma. *Scand J Gastroenterol.* 2004; 39:754–60. doi: 10.1080/00365520410005973.
 14. Noguchi E, Saito N, Kobayashi M, Kameoka S. Clinical significance of hepatocyte growth factor/c-Met expression in the assessment of gastric cancer progression. *Mol Med Rep.* 2015; 11:3423–31. doi: 10.3892/mmr.2015.3205.
 15. Takahashi N, Furuta K, Taniguchi H, Sasaki Y, Shoji H, Honma Y, Iwasa S, Okita N, Takashima A, Kato K, Hamaguchi T, Shimada Y, Yamada Y. Serum level of hepatocyte growth factor is a novel marker of predicting the outcome and resistance to the treatment with trastuzumab in HER2-positive patients with metastatic gastric cancer. *Oncotarget.* 2016; 7:4925–38. doi: 10.18632/oncotarget.6753.
 16. Gupta A, Karakiewicz PI, Roehrborn CG, Lotan Y, Zlotta AR, Shariat SF. Predictive value of plasma hepatocyte growth factor/scatter factor levels in patients with clinically localized prostate cancer. *Clin Cancer Res.* 2008; 14:7385–90. doi: 10.1158/1078-0432.ccr-07-5110.
 17. Aune G, Lian AM, Tingulstad S, Torp SH, Forsmo S, Reseland JE, Stunes AK, Syversen U. Increased circulating hepatocyte growth factor (HGF): a marker of epithelial ovarian cancer and an indicator of poor prognosis. *Gynecol Oncol.* 2011; 121:402–6. doi: 10.1016/j.ygyno.2010.12.355.
 18. Taniguchi T, Toi M, Inada K, Imazawa T, Yamamoto Y, Tominaga T. Serum concentrations of hepatocyte growth factor in breast cancer patients. *Clin Cancer Res.* 1995; 1:1031–4.
 19. Kim H, Youk J, Yang Y, Kim TY, Min A, Ham HS, Cho S, Lee KH, Keam B, Han SW, Oh DY, Ryu HS, Han W, et al. Prognostic implication of serum hepatocyte growth factor in stage II/III breast cancer patients who received neoadjuvant chemotherapy. *J Cancer Res Clin Oncol.* 2016; 142:707–14. doi: 10.1007/s00432-015-2072-5.
 20. Liang QL, Mo ZY, Wang P, Li X, Liu ZX, Zhou ZM. The clinical value of serum hepatocyte growth factor levels in patients undergoing primary radiotherapy for glioma: effect on progression-free survival. *Med Oncol.* 2014; 31: 122. doi: 10.1007/s12032-014-0122-5.
 21. Hugel R, Muendlein A, Volbeding L, Drexel H, Richtig E, Wehkamp U, Painsi C, Lange-Asschenfeldt B, Hauschild A, Egberts F. Serum levels of hepatocyte growth factor as a potential tumor marker in patients with malignant melanoma. *Melanoma Res.* 2016. doi: 10.1097/cmr.000000000000269.
 22. Rampa C, Tian E, Vatsveen TK, Buene G, Slordahl TS, Borset M, Waage A, Sundan A. Identification of the source of elevated hepatocyte growth factor levels in multiple myeloma patients. *Biomark Res.* 2014; 2: 8. doi: 10.1186/2050-7771-2-8.
 23. Minarik J, Pika T, Bacovsky J, Petrova P, Langova K, Scudla V. Prognostic value of hepatocyte growth factor, syndecan-1, and osteopontin in multiple myeloma and monoclonal gammopathy of undetermined significance. *ScientificWorldJournal.* 2012; 2012: 356128. doi: 10.1100/2012/356128.
 24. Arriola E, Canadas I, Arumi-Uria M, Domine M, Lopez-Vilarino JA, Arpi O, Salido M, Menendez S, Grande E, Hirsch FR, Serrano S, Bellosillo B, Rojo F, et al. MET phosphorylation predicts poor outcome in small cell lung carcinoma and its inhibition blocks HGF-induced effects in MET mutant cell lines. *Br J Cancer.* 2011; 105:814–23. doi: 10.1038/bjc.2011.298.
 25. Canadas I, Taus A, Gonzalez I, Villanueva X, Gimeno J, Pijuan L, Domine M, Sanchez-Font A, Vollmer I, Menendez S, Arpi O, Mojal S, Rojo F, et al. High circulating hepatocyte growth factor levels associate with epithelial to

- mesenchymal transition and poor outcome in small cell lung cancer patients. *Oncotarget*. 2014; 5:5246–56. doi: 10.18632/oncotarget.2124.
26. Ozasa H, Oguri T, Maeno K, Takakuwa O, Kunii E, Yagi Y, Uemura T, Kasai D, Miyazaki M, Niimi A. Significance of c-MET overexpression in cytotoxic anticancer drug-resistant small-cell lung cancer cells. *Cancer Sci*. 2014; 105:1032–9. doi: 10.1111/cas.12447.
 27. Yu H, Wang Y, Yu Q, Zhang H, Ma W, Shang S, Wang D. Significance of plasma hepatocyte growth factor in diagnosis of benign and malignant solitary pulmonary nodules. *Int J Clin Exp Pathol*. 2015; 8:2063–7.
 28. Hosoda H, Izumi H, Tukada Y, Takagiwa J, Chiaki T, Yano M, Arai H. Plasma hepatocyte growth factor elevation may be associated with early metastatic disease in primary lung cancer patients. *Ann Thorac Cardiovasc Surg*. 2012; 18:1–7.
 29. Ujiiie H, Tomida M, Akiyama H, Nakajima Y, Okada D, Yoshino N, Takiguchi Y, Tanzawa H. Serum hepatocyte growth factor and interleukin-6 are effective prognostic markers for non-small cell lung cancer. *Anticancer Res*. 2012; 32:3251–8.
 30. Masago K, Togashi Y, Fujita S, Sakamori Y, Okuda C, Kim YH, Mio T, Mishima M. Clinical significance of serum hepatocyte growth factor and epidermal growth factor gene somatic mutations in patients with non-squamous non-small cell lung cancer receiving gefitinib or erlotinib. *Med Oncol*. 2012; 29:1614–21. doi: 10.1007/s12032-011-0009-7.
 31. Arrieta O, Cruz-Rico G, Soto-Perez-de-Celis E, Ramirez-Tirado LA, Caballe-Perez E, Martinez-Hernandez JN, Martinez-Alvarez I, Soca-Chafre G, Macedo-Perez EO, Astudillo-de la Vega H. Reduction in Hepatocyte Growth Factor Serum Levels is Associated with Improved Prognosis in Advanced Lung Adenocarcinoma Patients Treated with Afatinib: a Phase II Trial. *Target Oncol*. 2016. doi: 10.1007/s11523-016-0425-x.
 32. Umeguchi H, Sueoka-Aragane N, Kobayashi N, Nakamura T, Sato A, Takeda Y, Hayashi S, Sueoka E, Kimura S. Usefulness of plasma HGF level for monitoring acquired resistance to EGFR tyrosine kinase inhibitors in non-small cell lung cancer. *Oncol Rep*. 2015; 33:391–6. doi: 10.3892/or.2014.3560.
 33. Kasahara K, Arai T, Sakai K, Matsumoto K, Sakai A, Kimura H, Sone T, Horiike A, Nishio M, Ohira T, Ikeda N, Yamanaka T, Saijo N, et al. Impact of serum hepatocyte growth factor on treatment response to epidermal growth factor receptor tyrosine kinase inhibitors in patients with non-small cell lung adenocarcinoma. *Clin Cancer Res*. 2010; 16:4616–24. doi: 10.1158/1078-0432.CCR-10-0383.
 34. Li A, Niu FY, Han JF, Lou NN, Yang JJ, Zhang XC, Zhou Q, Xie Z, Su J, Zhao N, Huang Y, Wu YL. Predictive and prognostic value of de novo MET expression in patients with advanced non-small-cell lung cancer. *Lung Cancer*. 2015; 90:375–80. doi: 10.1016/j.lungcan.2015.10.021.
 35. Jeffers M, Rong S, Vande Woude GF. Enhanced tumorigenicity and invasion-metastasis by hepatocyte growth factor/scatter factor-met signalling in human cells concomitant with induction of the urokinase proteolysis network. *Mol Cell Biol*. 1996; 16:1115–25.
 36. Horiguchi N, Takayama H, Toyoda M, Otsuka T, Fukusato T, Merlino G, Takagi H, Mori M. Hepatocyte growth factor promotes hepatocarcinogenesis through c-Met autocrine activation and enhanced angiogenesis in transgenic mice treated with diethylnitrosamine. *Oncogene*. 2002; 21:1791–9. doi: 10.1038/sj.onc.1205248.
 37. Tward AD, Jones KD, Yant S, Cheung ST, Fan ST, Chen X, Kay MA, Wang R, Bishop JM. Distinct pathways of genomic progression to benign and malignant tumors of the liver. *Proc Natl Acad Sci U S A*. 2007; 104:14771–6. doi: 10.1073/pnas.0706578104.
 38. Kunii E, Ozasa H, Oguri T, Maeno K, Fukuda S, Uemura T, Takakuwa O, Ohkubo H, Takemura M, Niimi A. Reversal of c-MET-mediated Resistance to Cytotoxic Anticancer Drugs by a Novel c-MET Inhibitor TAS-115. *Anticancer Res*. 2015; 35:5241–7.
 39. Sadiq AA, Salgia R. MET as a possible target for non-small-cell lung cancer. *J Clin Oncol*. 2013; 31:1089–96. doi: 10.1200/jco.2012.43.9422.
 40. Feng Y, Thiagarajan PS, Ma PC. MET signaling: novel targeted inhibition and its clinical development in lung cancer. *J Thorac Oncol*. 2012; 7:459–67. doi: 10.1097/JTO.0b013e3182417e44.
 41. Spigel DR, Ervin TJ, Ramlau RA, Daniel DB, Goldschmidt JH Jr, Blumenschein GR Jr, Krzakowski MJ, Robinet G, Godbert B, Barlesi F, Govindan R, Patel T, Orlov SV, et al. Randomized phase II trial of Onartuzumab in combination with erlotinib in patients with advanced non-small-cell lung cancer. *J Clin Oncol*. 2013; 31:4105–14. doi: 10.1200/jco.2012.47.4189.
 42. David R, Spigel, Martin J, Edelman, Kenneth O'Byrne, Luis Paz-Ares, David S. Shames, Wei Yu, Virginia E. Paton, Mok T. Onartuzumab plus erlotinib versus erlotinib in previously treated stage IIIb or IV NSCLC: Results from the pivotal phase III randomized, multicenter, placebo-controlled METLung (OAM4971g) global trial. *J Clin Oncol*. 2014 (suppl; abstr 8000); 32: 5s.
 43. Koeppen H, Yu W, Zha J, Pandita A, Penuel E, Rangell L, Raja R, Mohan S, Patel R, Desai R, Fu L, Do A, Parab V, et al. Biomarker analyses from a placebo-controlled phase II study evaluating erlotinib+/-onartuzumab in advanced non-small cell lung cancer: MET expression levels are predictive of patient benefit. *Clin Cancer Res*. 2014; 20:4488–98. doi: 10.1158/1078-0432.ccr-13-1836.
 44. Suda K, Murakami I, Katayama T, Tomizawa K, Osada H, Sekido Y, Maehara Y, Yatabe Y, Mitsudomi T. Reciprocal and complementary role of MET amplification and EGFR T790M mutation in acquired resistance to kinase inhibitors in lung cancer. *Clin Cancer Res*. 2010; 16:5489–98. doi: 10.1158/1078-0432.CCR-10-1371.
 45. Gohji K, Nomi M, Niitani Y, Kitazawa S, Fujii A, Katsuoka Y, Nakajima M. Independent prognostic value of serum

- hepatocyte growth factor in bladder cancer. *J Clin Oncol*. 2000; 18:2963–71. doi: 10.1200/jco.2000.18.16.2963.
46. Kanehisa M, Ishitobi Y, Ando T, Okamoto S, Maruyama Y, Kohno K, Ninomiya T, Higuma H, Tanaka Y, Tsuru J, Hanada H, Kodama K, Akiyoshi J. Serum hepatocyte growth factor levels and the effects of antidepressants in panic disorder. *Neuropeptides*. 2010; 44:431–5. doi: 10.1016/j.npep.2010.04.007.
47. Kilic-Baygutalp N, Ozturk N, Orsal-Ibisoglu E, Gundogdu B, Ozgeris FB, Bakan N, Bakan E, Kilic AF. Evaluation of serum HGF and CK18 levels in patients with esophageal cancer. *Genet Mol Res*. 2016; 15. doi: 10.4238/gmr.15038583.
48. Eisenhauer EA, Therasse P, Bogaerts J, Schwartz LH, Sargent D, Ford R, Dancey J, Arbuck S, Gwyther S, Mooney M, Rubinstein L, Shankar L, Dodd L, et al. New response evaluation criteria in solid tumours: revised RECIST guideline (version 1.1). *Eur J Cancer*. 2009; 45:228–47. doi: 10.1016/j.ejca.2008.10.026.