



Cite this: *RSC Adv.*, 2018, 8, 40701

Phase separation behavior of poly(methyl methacrylate)/poly(styrene-co-maleic anhydride) in the presence of hollow silica nanotubes

Xiong Lv, Min Zuo, * Haimo Zhang, An Zhao, Weipu Zhu  and Qiang Zheng

The phase separation behavior of poly(methyl methacrylate) (PMMA)/poly(styrene-co-maleic anhydride) (SMA) blends with and without one-dimensional hollow silica nanotubes (HSNTs) was investigated using time-resolved small-angle laser light scattering. During isothermal annealing over a range of 100 °C above the glass transition temperature, the Arrhenius equation is applicable to describe the temperature dependence of phase separation behavior at the early and late stages of spinodal decomposition (SD) for unfilled and filled PMMA/SMA systems. The mechanical barrier effect of HSNTs on the macromolecular chain diffusion of the blend matrix may retard the concentration fluctuation at the early stage and slow down the domain coarsening at the late stage of SD phase separation for the blend matrix to result in the decrease of apparent diffusion coefficient D_{app} , the postponement of the relaxation time and the decline of temperature sensitivity for the phase separation rate.

Received 15th September 2018
Accepted 23rd November 2018

DOI: 10.1039/c8ra07679k

rsc.li/rsc-advances

1. Introduction

The incorporation of nanofillers into a polymeric matrix, such as homopolymers, block copolymers or blends can open pathways to engineer composite materials with advantageous conductivity,^{1,2} flame resistance,³ and mechanical^{4,5} and optical properties.^{6,7} If the polymeric matrix is multicomponent, these above-mentioned properties strongly depend on the morphology and microstructure for the blend matrix and the location of nanofillers. Hence, the influence of nanofillers on the miscibility and phase separation for binary polymer blends should be explored to obtain the variation of morphology and microstructure for multicomponent systems. Partially miscible polymer blends are often used as model systems to investigate their critical phase behaviors, such as lower critical solution temperature (LCST) blends^{8–10} and upper critical solution temperature (UCST) blends.^{11–13} In general, there are two types of phase separation mechanism upon variation in temperature, pressure or composition: nucleation and growth (NG) in the metastable region and spinodal decomposition (SD) in the unstable region.^{14–17}

Extensive research has been mainly focused on the effect of spherical particles on the phase separation of polymer blends, for instance SiO₂ filled systems, such as polystyrene (PS)/poly(vinyl methyl ether) (PVME)/SiO₂ nanocomposites,^{8,10,18–20} poly(methyl methacrylate) (PMMA)/poly(styrene-co-acrylonitrile) (SAN)/SiO₂ nanocomposites,^{9,21–23} and polycarbonate (PC)/PMMA/SiO₂

nanocomposites.²⁴ The influence of nanofillers with other topological shapes on the phase separation of blend matrix has been also reported for one or two dimensional nanofillers filled systems, such as PS/PVME/multiwall carbon nanotubes (MWCNTs) nanocomposites,^{25–27} PMMA/SAN/MWCNTs nanocomposites,^{1,28,29} PMMA/SAN/clay nanocomposites,^{30,31} PMMA/SAN/GO nanocomposites,³² PMMA/SAN/chemically reduced graphene oxide (CRGO) nanocomposites^{33,34} and PS/PVME/reduced graphene oxide (RGO) nanocomposites.^{35,36} As a one-dimensional rod-like filler, hollow silica nanotubes (HSNTs) have attracted special interest because of its easy surface functionalization, porous wall structure, hydrophilic nature, and biocompatibility,³⁷ which may have some potential applications in reinforced materials, catalyst carriers, sensors, hydrogen storage materials, drug storage and delivery. However, the effect of HSNTs on the phase separation behavior of polymer blends has never been concerned and reported. The effective control for the morphology of blend matrix and distribution of HSNTs can be achieved to improve the ultimate properties of nanocomposites.

It is well known that the relaxation time (τ) of amorphous polymers controlled by the diffusion of segments and the temperature dependence of segment diffusion follow the time-temperature superposition (TTS) principle in the glass transition region.^{38,39} It was found that in our previous works,^{40–42} the TTS principle and Williams-Landel-Ferry (WLF) function could be used to describe the temperature dependence of apparent diffusion coefficient $D_{app}(T)$ and τ at the early and late stage of SD phase separation for binary polymer blends and ternary CRGO filled PMMA/SAN nanocomposites. However, all the investigated temperatures were between the glass transition

MOE Key Laboratory of Macromolecule Synthesis and Functionalization, Ministry of Education, Department of Polymer Science and Engineering, Zhejiang University, Hangzhou 310027, China. E-mail: kezuoimin@zju.edu.cn



temperature (T_g) and $T_g + 100$ °C in the abovementioned works. When the temperature is above $T_g + 100$ °C, the whole chain of polymer can move, and the temperature dependence of relaxation process follows the Arrhenius equation. The temperature dependence of diffusion coefficient,⁴³ mobility⁴⁴ for polymeric materials and phase separation behavior for binary polymer blends,^{45,46} the apparent activation energy and the temperature dependence of relaxation time for aqueous polymer solutions⁴⁷ can be described by the Arrhenius equation. It is a doubt that whether the incorporation of nanofillers may affect the applicability of Arrhenius equation to the phase separation behavior of blend matrix above $T_g + 100$ °C.

The phase separation behavior for PMMA/poly(styrene-*co*-maleic anhydride) (SMA) blends with LCST characteristic has been investigated using dynamic rheological measurements.^{48–50} The relation between morphology and dynamic modulus during the phase separation process indicates that the phase separation temperature of PMMA/SMA system is above $T_g + 100$ °C and beyond the glass transition region. In this work, PMMA/SMA was chosen as a model blend matrix and the effect of one-dimensional HSNTs on the phase separation behavior of such blend matrix was investigated over wide appropriate temperature above $T_g + 100$ °C using small-angle laser light scattering (SALLS) to explore the applicability of Arrhenius equation to describe the temperature dependence of SD phase separation for unfilled and filled PMMA/SMA systems.

2. Experimental

2.1 Materials

Poly(methyl methacrylate) (PMMA, IF850) with $M_w = 8.1 \times 10^4$, $M_w/M_n = 1.9$ and $T_g = 95$ °C was purchased from LG Co. Ltd, South Korea. Poly(styrene-*co*-maleic anhydride) (SMA, 210) with $M_w = 2.6 \times 10^5$, $M_w/M_n = 3.7$, $T_g = 118$ °C and MA content of 10 wt% was supplied by SINOPEC Shanghai Research Institute of Petrochemical Technology, China. Polyoxyethylene (20) cetyl ether (Brij 58) was purchased from Sigma-Aldrich. Hydrazine hydrate (100%, hydrazine 64%), tetraethyl orthosilicate (TEOS), nickel chloride ($\text{NiCl}_2 \cdot 6\text{H}_2\text{O}$), diethylamine, hydrochloric acid (HCl, 37.5%), cyclohexane, methyl ethyl ketone, ethanol, and isopropanol were purchased from Beijing Chemical Reagent Co., China. All the chemicals were used as received without further purification.

2.2 Sample preparation

Hollow silica nanotubes (HSNTs) were synthesized by templating of nickel-hydrazine complex nanorods.⁵¹ 8.0 g of Brij58 was dissolved in 20 mL of cyclohexane at 50 °C. 2 mL of NiCl_2 solution (0.8 M) was added under stirring and stirred until homogeneity. Next, 0.5 mL of hydrazine hydrate was added dropwise. After 3 h stirring, 1 mL of diethylamine and subsequently 3 mL of TEOS were added into the system. The silica coating process was carried out for 4 h during which the TEOS deposited on the surface of the rod-like template to form a coating of silica layer. The coated sample was centrifuged and washed with isopropanol and ethanol. The as-synthesized

nickel-hydrazine@silica nanorods were dispersed in 50 mL of HCl solution (4 M) to obtain the silica nanotubes. The dispersion was stirred at room temperature for 2 h. The silica nanotubes were collected by centrifugation and washed with water and ethanol until the pH value was neutral. Finally, the nanotubes were then dispersed in methyl ethyl ketone and stored.

PMMA and SMA were dried for more than 24 h at 80 °C in vacuum oven. HSNTs were dispersed in methyl ethyl ketone and the suspension was ultrasonicated for 15 min. PMMA/SMA were dissolved by continuous stirring in aforementioned suspension at a weight fraction of 5% and the mixture was then ultrasonicated for another 15 min to form the uniform dispersion of HSNTs in the PMMA/SMA solution. Subsequently, the suspensions were cast onto the cover glasses at 30 °C. After the solvent evaporated at 30 °C for 24 h, the sample samples were dried at 60 °C, 90 °C, 120 °C for another 3 days in vacuum oven to remove the residual solvent. The PMMA/SMA blends are denoted by *A/B* and PMMA/SMA/HSNTs samples are denoted by *A/B/x*, where *A* and *B* are the weight fraction of PMMA and SMA in the binary blend, respectively, and *x* is the weight fraction of HSNTs compared to the total amount of polymers.

2.3 Characterizations

A custom-made, time-resolved SALLS apparatus described in previous papers^{40,42} was used in this work. The principle and details of the SALLS system were presented elsewhere.^{16,52} During the isothermal annealing experiment, homogeneous samples were first annealed at 160 °C for 10 min, and then heated to the appointed temperature for isothermal measurement. In nonisothermal phase-separation experiments, homogeneous samples were put on a hot stage and annealed at 160 °C for 10 min, then heated to 250 °C at various heating rates. And the cloud points were obtained from the intersections of the tangents of the scattering intensity *vs.* temperature curves. The accuracy of temperature control was about ± 0.1 °C. None of the samples exhibited any yellowing during the whole measurement process, indicating that no obvious degradations had occurred.

The morphology evolution of PMMA/SMA blends and PMMA/SMA/HSNTs nanocomposites was observed by phase contrast microscope (PCM, BX51, Olympus, Japan) with a temperature-control hot stage (THMS600, Linkam, UK) in combination with a digital camera.

Transmission electron microscope (TEM, JEM 1200EX, Japan) was adopted to observe the morphology of HSNTs and the distribution of HSNTs in the blend matrix. HSNTs samples were prepared by casting one drop of HSNTs dilute suspension (0.3 wt%) onto a copper grid and volatilize the solvent thoroughly. TEM specimens of the nanocomposites were prepared by embedding the samples in the epoxy resin (solidified at ambient temperature for 24 h) and ultramicro-toming them into the sections of 100 nm thick with a diamond knife.

The surface tensions of PMMA and SMA was deduced by the contact angle measurement which was carried out on the surface of compression-molded films of pure PMMA and SMA. The contact angle was measured at 25 °C with a drop shape

analysis system (Harke-SPCA, China). Measurement of a given contact angle was carried out for at least 5 times. Double distilled water (H₂O) and formamide (CH₃ON) were used as probe liquids.

3. Theoretical background

Generally, the linear Cahn–Hilliard theory can be used to describe the scattering intensity evolution at the early stage of SD phase separation for binary blends.^{53,54} On the premise of unchanged mechanism of phase separation for ternary polymer nanocomposites, their phase separation at the early stage can also be described by the Cahn–Hilliard theory. Considering the thermal fluctuation of homogeneous polymer blends, Cook⁵⁵ modified Cahn–Hilliard function into

$$I(q, t) = I_s(q, 0) + [I(q, 0) - I_s(q, 0)]\exp[2R(q)t] \quad (1)$$

where $I_s(q, 0)$ is the scattering intensity of stable system. Furthermore, $q = (4\pi/\lambda)\sin(\theta/2)$ is the scattering vector, λ is the corresponding wavelength and θ is the scattering angle. The relaxation rate $R(q)$ is further related by

$$R(q) = -Mq^2 \left(\frac{\partial^2 f_m}{\partial \phi^2} + 2kq^2 \right) \quad (2)$$

where M , f_m , ϕ , and k are the mobility coefficient of molecules, the mean field free energy of mixing, the volume fraction and the energy gradient coefficient arising from the contribution of composition gradient to the energy, respectively. Eqn (2) includes the apparent diffusion coefficient D_{app} , which describes the uphill diffusion during spinodal decomposition:

$$D_{\text{app}} = -M \frac{\partial^2 f_m}{\partial \phi^2} \quad (3)$$

We can see that plots of $\ln[(I(q, t) - I_s(q, 0))/(I(q, 0) - I_s(q, 0))]$ versus t can yield $R(q)$ from eqn (1) and the D_{app} and $2Mk$ values can be obtained from the intercept and slope of the plot of $R(q)/q^2$ versus q^2 . Differentiation of eqn (3) with respect to q yields the characteristic scattering vector q_m with maximum scattering intensity I_m at the early stage of phase separation, the scattering vector corresponding to the correlation length of maximal growth $\Lambda = 1/q_m$, which has no time dependence as related by

$$q_m(t = 0) = \sqrt{\frac{D_{\text{app}}}{4Mk}} \quad (4)$$

At the late stage of SD, the prevalent mechanism is the nonlinear phase growth that causes the scattering halo to shrink to a smaller diameter, which is the coarsening process of phase domains. Such process follows power laws, in which the time evolution of q_m and $I(q_m)$ at the late stage is described as^{56,57}

$$I(q_m(t)) \propto t^\beta \quad (5)$$

$$q_m(t) \propto t^{-\alpha} \quad (6)$$

4. Results and discussion

4.1 Morphology of HSNTs

Here, TEM is used to observe the morphology of HSNTs synthesized by a sol–gel method. Fig. 1(a) shows a TEM image of the nickel-hydrazine@silica nanorods with the core–shell structure. From the contrast between the core and the shell in the TEM image, we can easily identify a silica shell of about 10 nm thickness coated on the surface of the nanocrystals. Some particle-like dots in the core can be observed, which are the products of the decomposition and recrystallization of the nickel-hydrazine complex formed under electron beam radiation during TEM imaging. When the core–shell nanostructures are treated with HCl, the silica shell can be retained, while the nickel-hydrazine nanocrystals are removed by forming water soluble NiCl₂, resulting in hollow silica nanotubes, as shown in Fig. 1(b). The HSNTs with a length 200–300 nm, an inner diameter of 20 nm and an outer diameter of 30 nm were obtained by the complete removal of the rod-like template from the core–shell structure.

4.2 Effect of HSNTs on the isothermal phase separation behavior of PMMA/SMA blends

In order to avoid the negative effect of sample thickness and background light, the real-time scattering intensity $I(t)$ at given $q(t)$ is normalized as $(I(t) - I(0))/(I_m - I(0))$, in which $I(0)$ is the

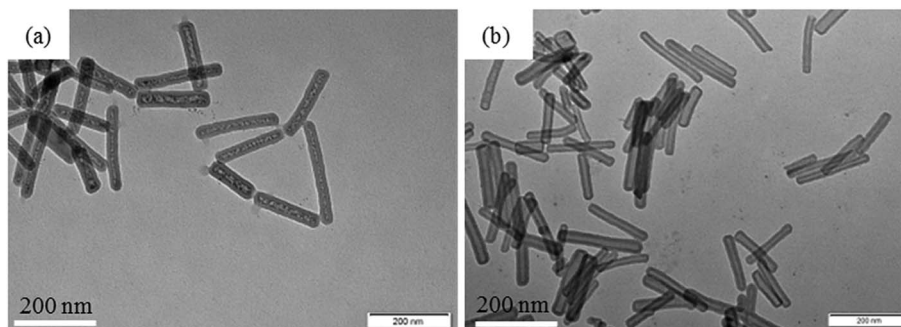


Fig. 1 TEM images for (a) the nickel-hydrazine@silica core–shell nanorods and (b) HSNTs.

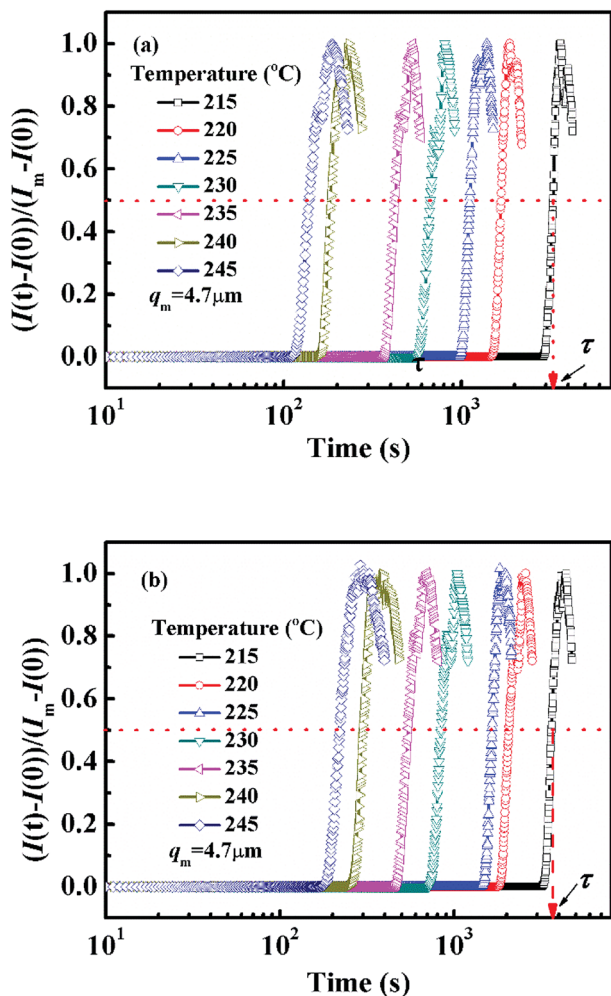


Fig. 2 Time dependence of normalized scattering intensity of (a) PMMA/SMA (80/20) blends and (b) PMMA/SMA/HSNTs (80/20/0.8) nanocomposites at different annealing temperatures and $q = 4.7 \mu\text{m}^{-1}$.

initial scattering intensity at the beginning of the experiment and I_m is the maximum scattering intensity during the whole annealing process. Fig. 2 shows the semi-logarithm plots of normalized scattering intensity *versus* time for PMMA/SMA (80/20) blend and PMMA/SMA/HSNTs (80/20/0.8) nanocomposites during isothermal annealing at different temperatures. It can be found that all the curves are nearly similar and parallel to each other for unfilled and filled systems. The relaxation time (τ) is defined as the time at which the normalized scattering intensity at different temperatures gets to the same degree (for instance 50%), as shown in Fig. 2. The time evolution of scattering intensity for PMMA/SMA (60/40) blends and PMMA/SMA/HSNTs (60/40/0.8) nanocomposites are also explored and the details aren't given here due to their similar variation. The critical composition of PMMA/SMA blend is close to 60/40.⁴⁶ Hence, the near-critical composition (60/40) and the off-critical composition (80/20) were selected as our model blend matrix. Furthermore, all the investigated isothermal annealing temperatures were above $T_g + 100$ °C. Therefore, the Arrhenius equation should be

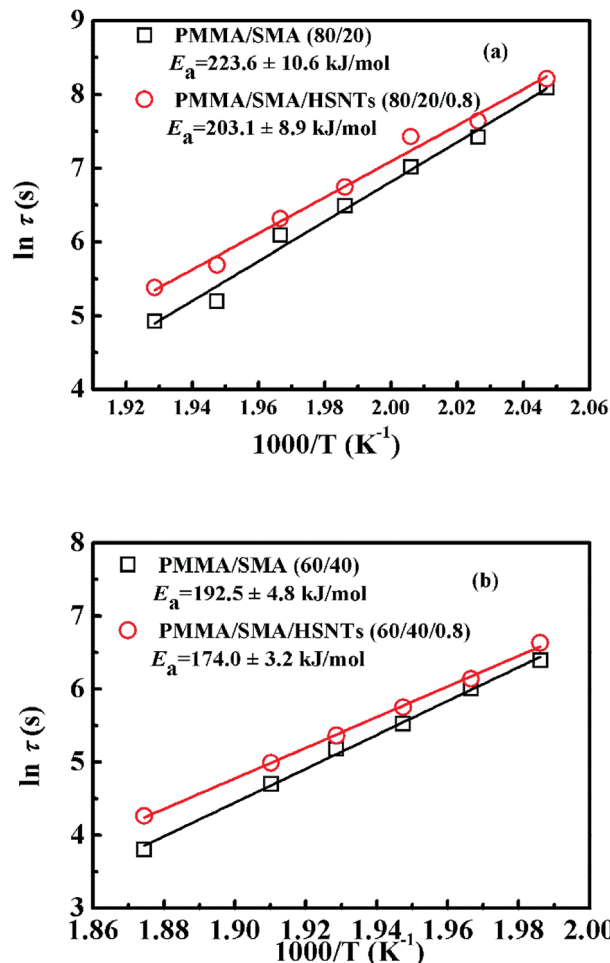


Fig. 3 Activation plots of τ for PMMA/SMA (80/20) blends and PMMA/SMA/HSNTs (80/20/0.8) nanocomposites at the early stage of SD.

attempted to describe the phase separation behavior of PMMA/SMA blends and PMMA/SMA/HSNTs nanocomposites, rather than the WLF equation.

Fig. 3 presents the temperature dependence of $\ln \tau$ for unfilled and filled PMMA/SMA systems with two matrix compositions. It can be seen that τ strongly depends on the annealing temperature and increases with decreasing temperature. Meanwhile, τ values for filled system are longer than those for unfilled system, indicating that the incorporation of HSNTs may increase the phase stability of PMMA/SMA blend matrix and delay the occurrence of concentration fluctuation for the blends matrix at the early stage of SD phase separation. Here, it should be noted that HSNTs tend to be located in the PMMA-rich phase of phase-separated blend matrix during the whole SD process (this will be discussed in detail in Section 4.3). Furthermore, it is noted that the plots of $\ln \tau$ against $1/T$ exhibit good linear relationship, indicating that the phase-separation behaviors for unfilled and filled systems both follow an Arrhenius-like equation. Hence, the dependence of τ can be described as

$$\tau = \tau_0 \exp\left(\frac{E_a}{RT}\right) \quad (7)$$

where E_a (kJ mol^{-1}) is the activate energy and τ_0 is a constant. The values of E_a can be calculated as $223.0 \pm 10.6 \text{ kJ mol}^{-1}$, $203.1 \pm 8.9 \text{ kJ mol}^{-1}$, $192.5 \pm 4.8 \text{ kJ mol}^{-1}$, and $174.0 \pm 3.2 \text{ kJ mol}^{-1}$ for PMMA/SMA (80/20) blends, PMMA/SMA/HSNTs (80/20/0.8), PMMA/SMA (60/40) blends and PMMA/SMA/HSNTs (60/40/0.8) nanocomposites from the slopes for the plots of $\ln \tau$ against $1/T$, respectively, indicating that the presence of HSNTs and the matrix composition may both change the temperature dependence of phase separation rate for PMMA/SMA blend matrix. Furthermore, the time evolution of scattering intensity at other vectors ranging from $3.0\text{--}5.0 \mu\text{m}^{-1}$ also follows the relationship. Therefore, the temperature dependence of isothermal phase separation for the unfilled and filled PMMA/SMA systems can be described by the Arrhenius equation for all the values of q investigated.

It is well known that the characteristic scattering vector q_m with maximum scattering intensity I_m does not vary with time at the early stage of SD phase separation, which is ascribed to the fixed spatial period of concentration fluctuation at this stage.³⁹ The incorporation of HSNTs hardly changes the characteristic of SD behavior for PMMA/SMA blend matrix during all the investigated temperature range.

Fig. 4 shows semi-logarithm plots of $\ln((I(t) - I(0))/(I_m - I(0)))$ versus time for various q from 4.02 to $4.50 \mu\text{m}^{-1}$ at 220°C for PMMA/SMA (80/20) blends. All the plots exhibit good linear relationship, indicating that the phase separation behavior follows the linear Cahn–Hilliard theory. According to eqn (1), the values of $R(q)$ can be obtained from the initial slopes of $\ln((I(t) - I(0))/(I_m - I(0)))$ versus time curves. Based on eqn (2), $D_{\text{app}}(T)$ for the blends and nanocomposites and $2Mk(T)$ can be obtained from the intercepts and slopes of the plots of $R(q)/q^2$ against q^2 , respectively, as shown in Fig. 5. It can be found that the curves of $R(q)/q^2$ against q^2 follow a linear relationship at large q values, while the intensity is strongly influenced by the central intensity at small q values and the linear relationship is invalid. Hence, the data at small q values are not given in Fig. 5.

Fig. 6 shows the temperature dependence of $D_{\text{app}}(T)$ and $2Mk(T)$ for unfilled and filled PMMA/SMA systems with two

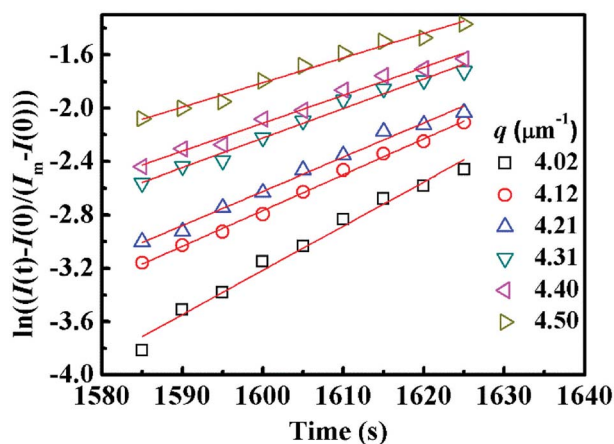


Fig. 4 Time evolution of $\ln((I(t) - I(0))/(I_m - I(0)))$ for PMMA/SMA (80/20) blends for various q during the early stage of phase separation at 220°C .

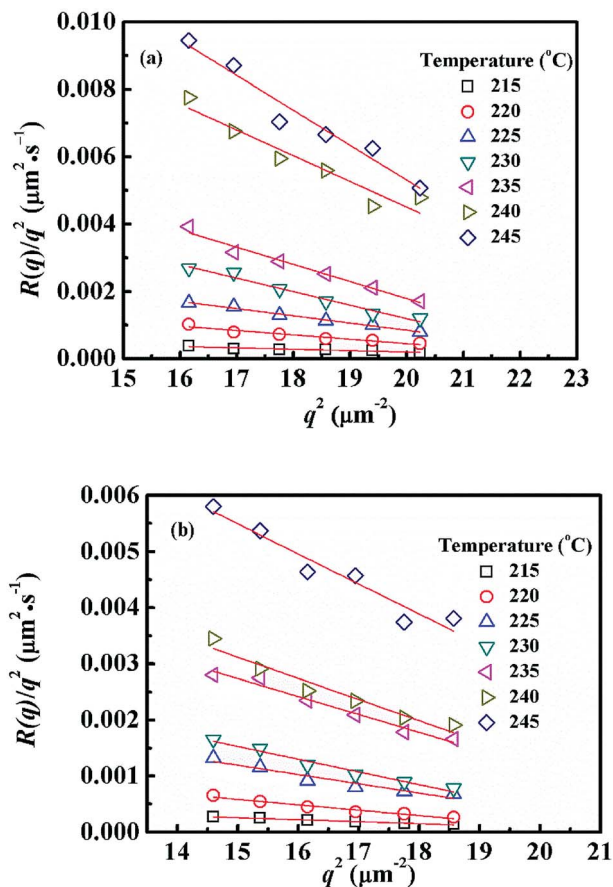


Fig. 5 Relationships between $R(q)/q^2$ and q^2 for (a) PMMA/SMA (80/20) blends and (b) PMMA/SMA/HSNTs (80/20/0.8) nanocomposites at different temperatures.

matrix compositions. It is obvious that for the unfilled and filled systems, $D_{\text{app}}(T)$ and $2Mk(T)$ both increase exponentially with temperature in all the investigated annealing temperature range. Hence, the equilibrium spinodal temperature can not be obtained by the linear extrapolation of $D_{\text{app}}(T)$ and $2Mk(T)$ to zero, similar with other systems reported previously.^{40–42,58} Moreover, it can be seen that D_{app} values for unfilled blends are remarkably higher than those for the filled nanocomposites, suggesting that the uphill diffusion at the early stage of SD for the filled system is obviously retarded by a small amount of HSNTs.

The temperature dependence of τ for unfilled and filled PMMA/SMA systems can be described by the Arrhenius equation in Section 4.2. Hence, the applicability of Arrhenius equation to the temperature dependence of $D_{\text{app}}(T)$ should be also explored further. As shown in Fig. 7, the plots of $\ln(1/D_{\text{app}})$ versus $1/T$ for the unfilled and filled systems are both linear, indicating that their temperature dependence of $D_{\text{app}}(T)$ can be described by the Arrhenius equation, just like τ . The temperature dependence of D_{app} can be expressed as follows

$$\frac{1}{D_{\text{app}}} = \frac{1}{D_0} \exp\left(\frac{E_a}{RT}\right) \quad (8)$$

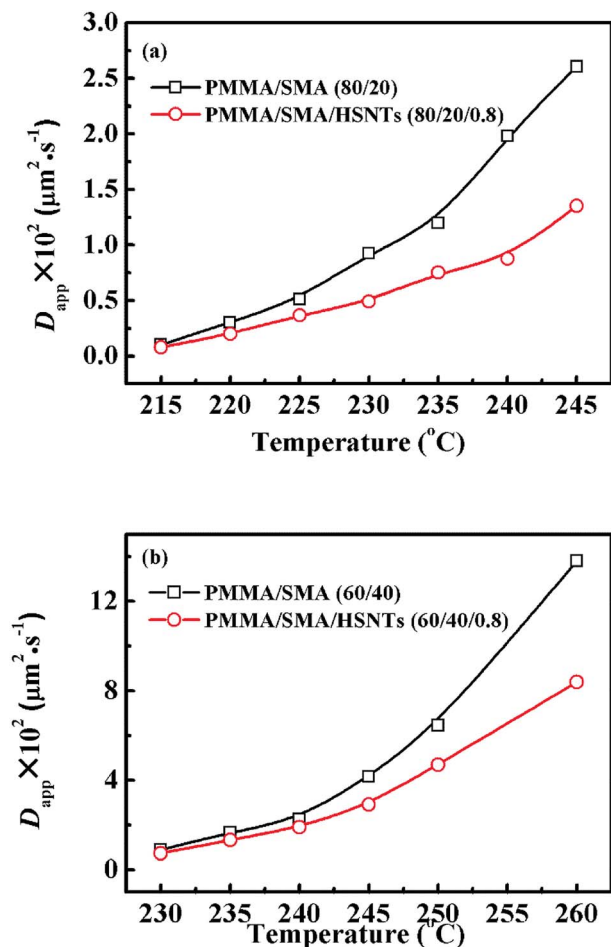


Fig. 6 Temperature dependence of (a) $D_{app}(T)$ and (b) $2Mk(T)$ for PMMA/SMA (80/20) blends and PMMA/SMA/HSNTs (80/20/0.8) nanocomposites.

where E_a is the activate energy of D_{app} and D_0 is constant. The E_a obtained from the slope of plots are $215 \pm 19.5 \text{ kJ mol}^{-1}$, $184.2 \pm 19.4 \text{ kJ mol}^{-1}$, $203.5 \pm 7.9 \text{ kJ mol}^{-1}$, $181.4 \pm 8.7 \text{ kJ mol}^{-1}$ for PMMA/SMA (80/20) blends, PMMA/SMA/HSNTs (80/20/0.8), PMMA/SMA (60/40) blends and PMMA/SMA/HSNTs (60/40/0.8) nanocomposites, respectively, indicating that the phase separation rate of unfilled PMMA/SMA system is more sensitive to temperature than that of filled system and the temperature dependence of phase separation kinetics is much different for PMMA/SMA blends with different compositions.

The constant q_m values at the early stage of SD gradually decrease with the extending of annealing time and finally tend to be constant, while the scattering intensity increases continuously during the whole process. At the intermediate stage of SD, both the amplitude and wavelength of the concentration fluctuation increase with time. At the late stage of SD, the concentration fluctuation of each component in the domains approaches equilibrium values. However, the size of domains is still growing to reduce the excess free energy associated with the interfacial area.⁵⁹ Fig. 8 shows the maximum scattering intensity I_m and characteristic scattering vector q_m for PMMA/SMA (80/20) blends and PMMA/SMA/HSNTs (80/20/0.8)

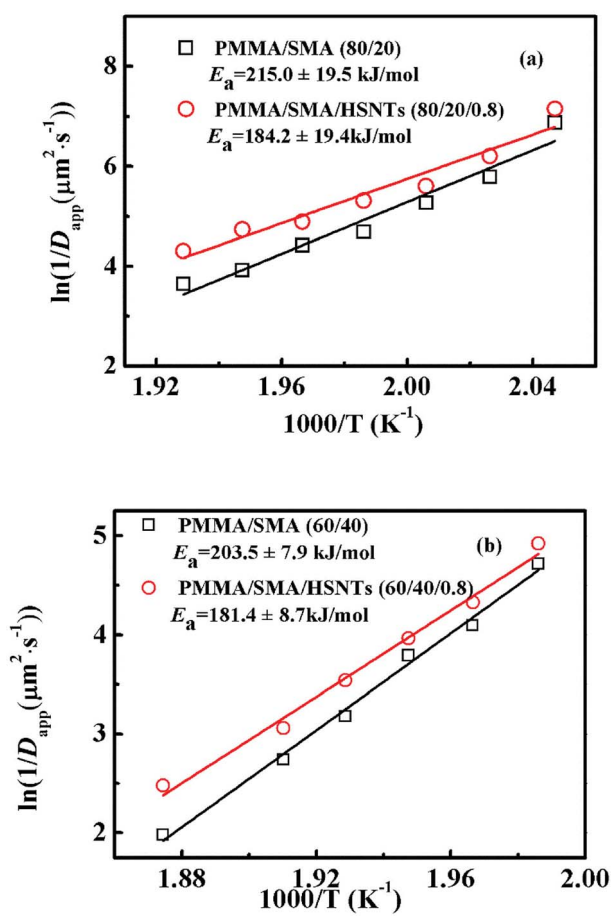


Fig. 7 Activation plots of $D_{app}(T)$ for PMMA/SMA blends and PMMA/SMA/HSNTs nanocomposites.

nanocomposites. Time evolution plots of $I_m(t)$ and $q_m(t)$ follow the scaling laws: $I_m(t) \sim t^\beta$ and $q_m(t) \sim t^{-\alpha}$.^{57,60} According to Siggia theory,⁶¹ the relationship between α and β is $\beta = 3\alpha$. It is found in Fig. 8 that the relationships between α and β for the unfilled and filled systems both follow Siggia theory. Moreover, the incorporation of HNSTs decreased α and β values for the blend matrix, indicating that the introduction of HNSTs may slow down the domain coarsening of blend matrix at the late stage of SD.

As mentioned above, the temperature dependence of relaxation time τ of normalized scattering intensity and D_{app} at the early stage of SD can be described by the Arrhenius equation. Here, the relaxation time $\tau(I_m)$ and $\tau(q_m)$ are defined as the time at which I_m increases to the same value (for instance 0.5) and q_m decreases to the same value (for instance 3.5) at different temperatures. $\tau(I_m)$ and $\tau(q_m)$ can be obtained from Fig. 8. Fig. 9 shows the plots of $\ln(\tau(I_m))$ and $\ln(\tau(q_m))$ versus $1/T$ for unfilled, filled PMMA/SMA (80/20) systems and PMMA/SMA (60/40) systems at the late stage of SD. It is found that such plots also follow a linear relationship, indicating that the Arrhenius equation can be also used to describe the temperature dependence of $\tau(I_m)$ and $\tau(q_m)$ at the late stage of SD. Hence, such temperature dependence of $\tau(I_m)$ and $\tau(q_m)$ can be described as:

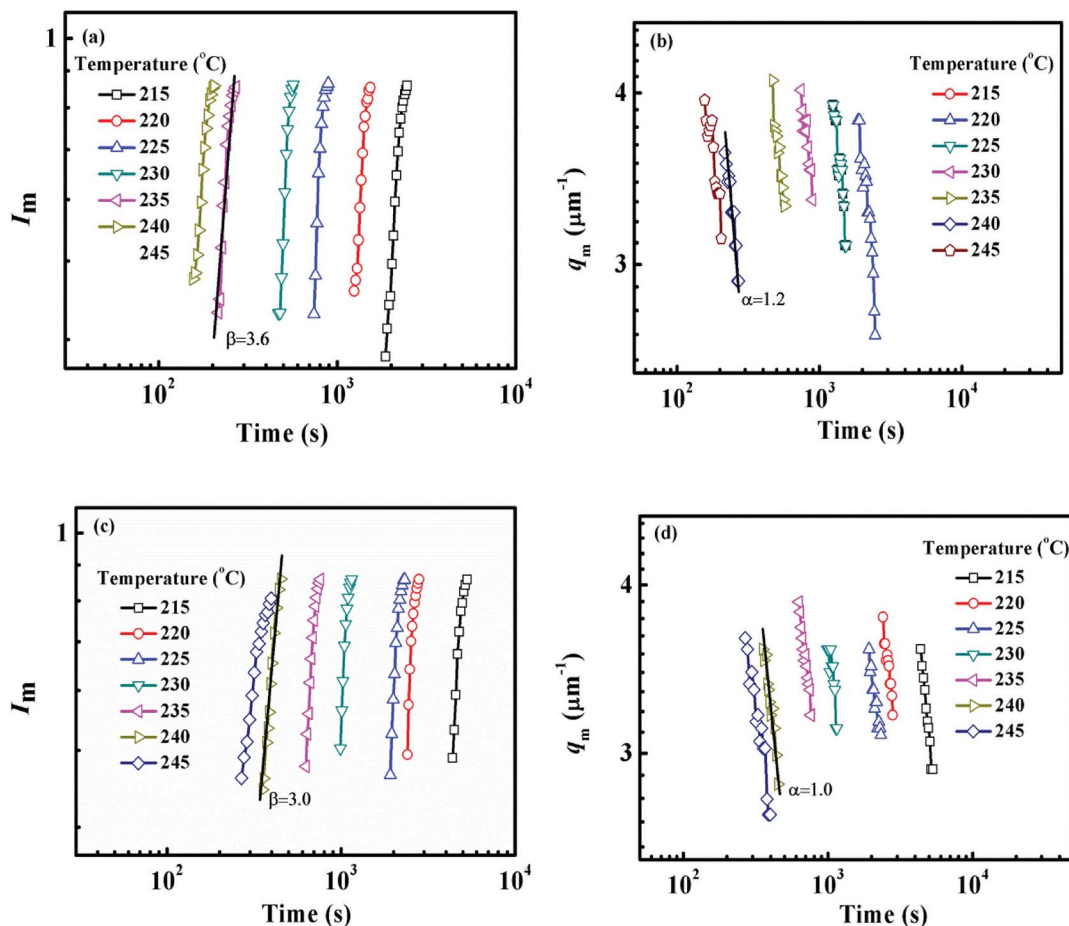


Fig. 8 Time evolution of (a) l_m , (b) q_m for PMMA/SMA (80/20) blends and (c) l_m , (d) q_m for PMMA/SMA/HSNTs (80/20/0.8) nanocomposites at the late stage of SD at different temperatures.

$$\tau(I_m) = \tau_0(I_m) \exp\left(\frac{E_a}{RT}\right) \quad (9)$$

$$\tau(q_m) = \tau_0(q_m) \exp\left(\frac{E_a}{RT}\right) \quad (10)$$

where E_a is the activate energy and τ_0 is a constant. The E_a values of $\tau(I_m)$ are $226.0 \pm 8.0 \text{ kJ mol}^{-1}$, $195.8 \pm 9.2 \text{ kJ mol}^{-1}$, $185.0 \pm 4.4 \text{ kJ mol}^{-1}$, $172.9 \pm 2.4 \text{ kJ mol}^{-1}$ and those of $\tau(q_m)$ are $217.8 \pm 11.1 \text{ kJ mol}^{-1}$, $198.7 \pm 7.2 \text{ kJ mol}^{-1}$, $181.1 \pm 7.1 \text{ kJ mol}^{-1}$, $166.7 \pm 3.4 \text{ kJ mol}^{-1}$ for PMMA/SMA (80/20) blends, PMMA/SMA/HSNTs (80/20/0.8), PMMA/SMA (60/40) blends and PMMA/SMA/HSNTs (60/40/0.8) nanocomposites, respectively. The difference in the E_a values further indicates that the phase separation rate of unfilled PMMA/SMA system at the late stage of SD is more sensitive to temperature than that of filled system, in accordance with the above-mentioned results at the early stage of SD.

It should be noted that all the above-mentioned activation energy values obtained from D_{app} and τ at the early and late stages of SD for the unfilled and filled systems are different. The incorporation of HSNTs might result in the difference of the concentration fluctuation, interfacial area and interfacial

tension at the early and late stages of SD. Hence, the activation energy of blend matrix is affected by the presence of HSNTs and the temperature sensitivity of phase separation rate for the nanocomposites decreases, implying the hindering effect of HSNTs on the SD phase separation behavior of PMMA/SMA blend. Besides the effect of HSNTs on the activation energy of blend matrix, different composition of blend matrix also results in different activation energy values. The composition of PMMA/SMA (60/40) is near-critical composition, while PMMA/SMA (80/20) is off-critical composition, which may lead to different phase-separated morphology and different temperature dependence of phase-separation kinetics. Moreover, when a different I_N , q_m or I_m value is selected, the relaxation time may be different and the resultant activation energy values may be also somewhat different. However, all the activation energy values for the same system are similar to each other (errors no more 10%). Hence, all the activation energy values for unfilled and filled systems are believed to be reliable. The activation energies obtained from D_{app} , I_N , q_m or I_m for a given system are very close and may be thought as the temperature dependence of phase separation kinetics for the blend matrix, which is not only related to the viscous activation energy of PMMA or SMA, but also related with the destruction of miscibility induced by

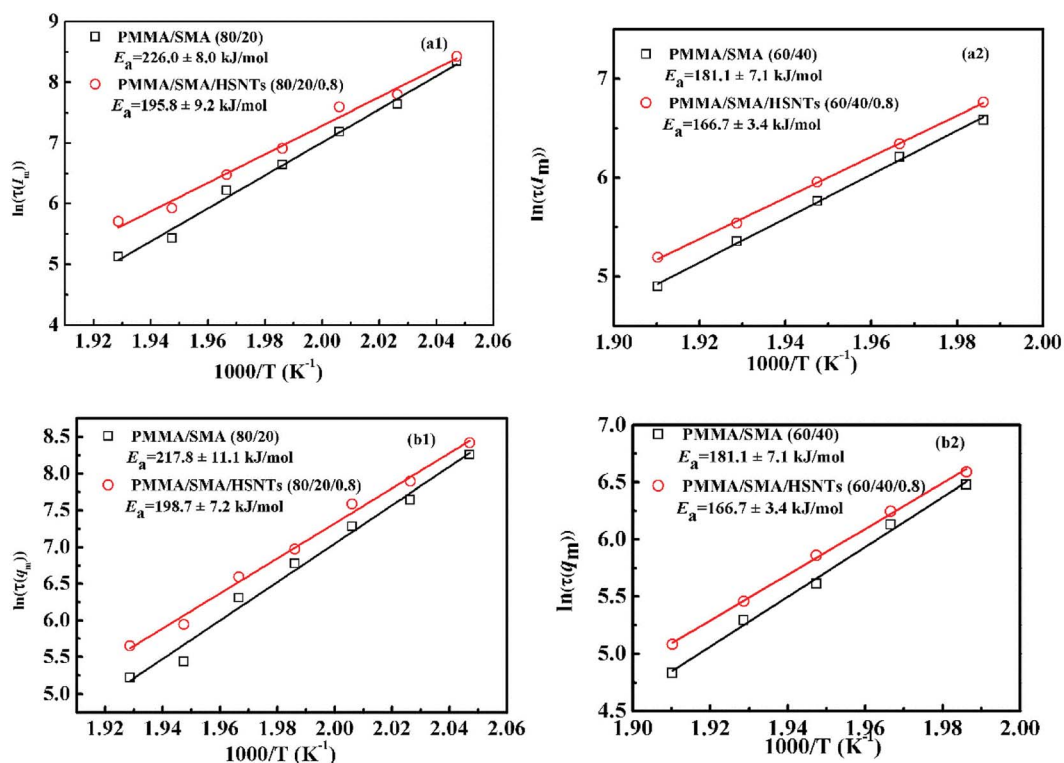


Fig. 9 Activation plots of $\tau(l_m)$ and $\tau(q_m)$ for PMMA/SMA blends and PMMA/SMA/HSNTs nanocomposites.

the temperature variation. Based on the obtained activation energies, the temperature dependence of SD phase-separation behavior for unfilled and filled PMMA/SMA systems during isothermal annealing may be predicted by the Arrhenius equation when the temperature are above $T_g + 100$ °C.

4.3 Effect of HSNTs on the cloud points and morphology evolution of PMMA/SMA blends

In order to explore the effect of HSNTs on the phase-separation temperature of PMMA/SMA blends, the cloud points (T_c) of unfilled and filled PMMA/SMA systems were also determined by SALLS upon heating at a given rate. The dependence of T_c on the heating rate for PMMA/SMA blends and PMMA/SMA/HSNTs nanocomposites with two matrix compositions is shown in Table 1. T_c s for binary blends and ternary nanocomposites both depend intensely on the heating rate and move towards higher temperature as the heating rate increases, due to the delayed effect of macromolecular segment mobility for the fast heating rate. The presence of a small amount of HSNTs causes the

increase of T_c s for PMMA/SMA blend matrices with two compositions, indicating that HSNTs may enhance the phase stability of PMMA/SMA blend matrix. Such retarded effect of HSNTs in the nonisothermal phase separation of blend matrix is consistent with that in their isothermal phase separation.

Fig. 10 shows the morphology evolution of PMMA/SMA (80/20) blends and PMMA/SMA/HSNTs (80/20/0.8) nanocomposites annealed at 210 °C for various time observed by PCM. The filled and unfilled systems both exhibit a co-continuous morphology at the early stage of phase separation and then the co-continuous morphological pattern gradually changes to a droplet structure due to the effect of interfacial tension between PMMA and SMA. Moreover, it can be found that the domain size of PMMA/SMA/HSNTs (80/20/0.8) nanocomposites is smaller than that of PMMA/SMA (80/20) blends for the same annealing time, indicating that the incorporation of HSNTs may retard the phase separation process.

TEM micrographs of PMMA/SMA (80/20) blend and PMMA/SMA/HSNTs (80/20/0.8) nanocomposites without annealing

Table 1 Cloud points of PMMA/SMA blends and PMMA/SMA/HSNTs nanocomposites

Heating rate (°C min ⁻¹)	Cloud point (°C)			
	PMMA/SMA (60/40)	PMMA/SMA/HSNTs (60/40/0.8)	PMMA/SMA (80/20)	PMMA/SMA/HSNTs (80/20/0.8)
0.5	228.3 ± 0.4	230.3 ± 0.5	225.4 ± 0.4	228.3 ± 0.6
1.0	232.2 ± 0.5	234.0 ± 0.6	230.6 ± 0.5	232.8 ± 0.5
5.0	245.1 ± 0.5	247.7 ± 0.6	245.3 ± 0.6	246.8 ± 0.6

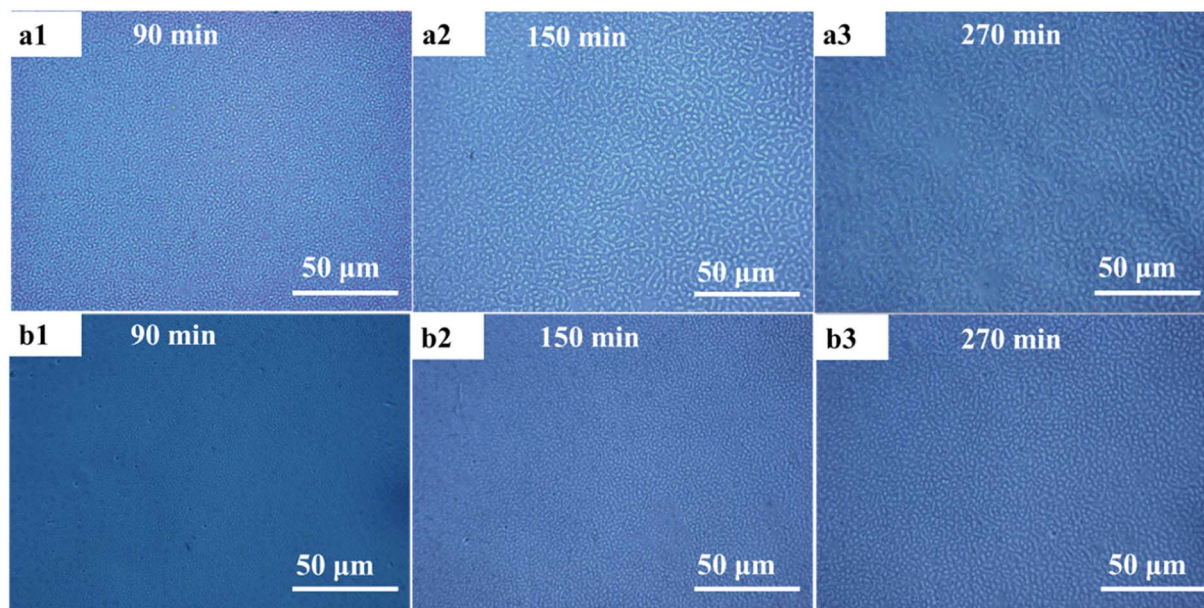


Fig. 10 Morphology evolution of (a) PMMA/SMA (80/20) blends and (b) PMMA/SMA/HSNTs (80/20/0.8) nanocomposites annealed at 210 °C for various time.

are shown in Fig. 11. HSNTs were well dispersed in a homogeneous PMMA/SMA blend matrix, indicating that the incorporation of HSNTs hardly destroyed the homogeneity of polymer blends. In order to further explore the distribution variation of HSNTs in the blend matrix and their morphology evolution during phase separation, the TEM images for PMMA/SMA (80/20) blends and PMMA/SMA/HSNTs (80/20/0.8) nanocomposites after being annealed at 215 °C for different time are given in Fig. 12. In the bright-field TEM images, the bright region refers to the PMMA-rich phase and the dark region refers to the SMA-rich phase. It can be found that most HSNTs tend to be located in the PMMA-rich phase (bright region) of phase-separated blend matrix during the whole SD process. In general, the fillers prefer to locate in one phase with a lower interfacial tension between the polymer and filler.⁶² Here, the surface tension of polymers was deduced by the contact angle measurement and the surface tension of fillers was obtained from the literature.⁶³ The interfacial tension of PMMA and HSNTs is calculated to be 10.03 mN m^{-1} , and the interfacial

tension of SMA and HSNTs is 15.39 mN m^{-1} . The interfacial tension of PMMA and HSNTs is lower than that of SMA and HSNTs. Therefore, HSNTs tend to be located in the PMMA-rich phase.

Consistent with the results of PCM, the domain size of PMMA/SMA/HSNTs (80/20/0.8) nanocomposites in the TEM observation is smaller than that of PMMA/SMA (80/20) blends for the same annealing time. The retardation effect of HSNTs on the phase separation of blend matrix may be caused by the mechanical barrier effect of HSNTs on the macromolecular diffusion. Such stabilizing effect of HSNTs on the morphology of blend matrix can be also similar with that in spherical nanosilica filled systems and may be attributed to the confined chain motion due to the adsorption of chains on the surface of nanoparticles.^{9,10,64,65} Furthermore, it can be found that some HSNTs aggregate in the PMMA-rich phase with the extending of annealing time and the diffusion motion of HSNTs in the phase-separated blend matrix should be mainly controlled by the mobility of PMMA surrounding HSNTs.¹ Here, there just

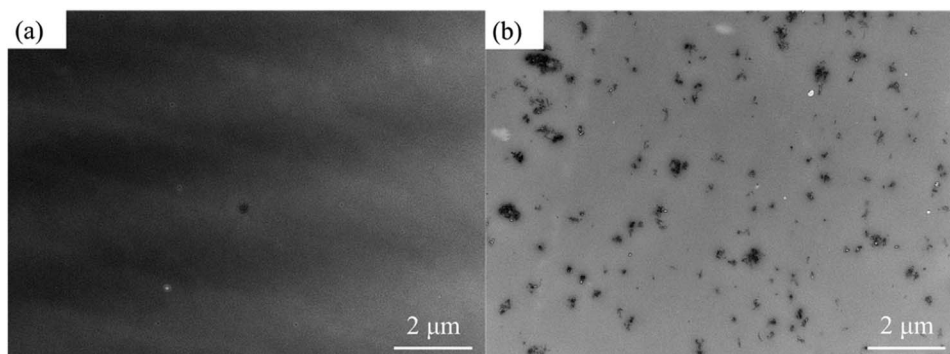


Fig. 11 TEM images for (a) PMMA/SMA (80/20) blend and (b) PMMA/SMA/HSNTs (80/20/0.8) nanocomposite without annealing.

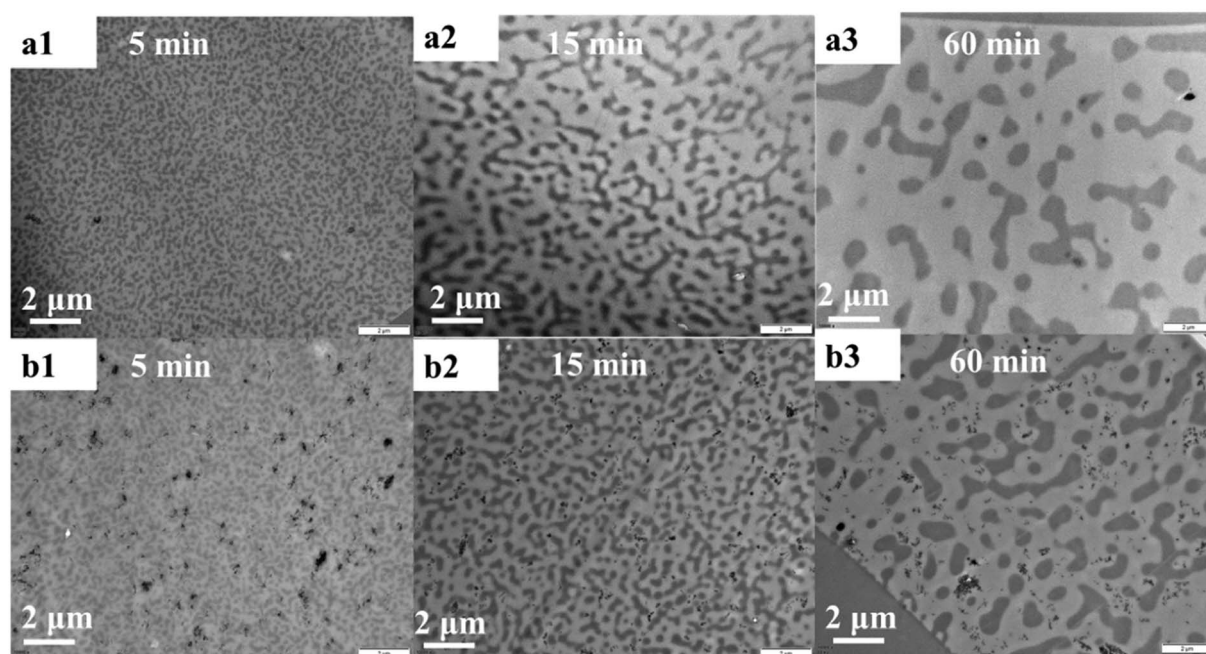


Fig. 12 TEM images for (a) PMMA/SMA (80/20) blends and (b) PMMA/SMA/HSNTs (80/20/0.8) nanocomposites after being annealed at 215 °C for different time.

exist a very small amount of relatively large aggregates of HSNTs in the PMMA-rich phase and we should explore whether the residual HSNTs form the filler network in the PMMA-rich phase to retard remarkably the SD phase separation of blend matrix in our next work.

5. Conclusions

The phase separation behavior of PMMA/SMA blends during isothermal annealing process has been investigated in the presence of small amount of HSNTs by using time-resolved SALLS. In the investigated annealing temperature range, the Arrhenius equation can be used to describe the nonlinear temperature dependence of relaxation time τ of normalized scattering intensity and apparent diffusion coefficient $D_{app}(T)$ at the early stage of SD, as well as the phase behavior at the late stage of SD for both PMMA/SMA (80/20) blends and PMMA/SMA/HSNTs (80/20/0.8) nanocomposites. The decline of activation energy of filled systems implies that the phase separation rate of unfilled PMMA/SMA (80/20) system is more sensitive to temperature than that of filled system and the phase separation behavior of blend matrix is retarded by the presence of HSNTs. Such hindering effect is also confirmed by the decrease of $D_{app}(T)$ at the early stage and the slowing down of domain coarsening at the late stage of SD for the blend matrix owing to the mechanical barrier effect of HSNTs on the macromolecular chain diffusion of blend matrix. The applicability of Arrhenius equation to describe the phase-separation behavior of unfilled and filled polymer blends would be helpful to predict the temperature dependence of the phase behavior for polymer blends and nanocomposites during isothermal annealing at the temperatures above $T_g + 100$ °C.

Conflicts of interest

There are no conflicts to declare.

Acknowledgements

This work was supported by Zhejiang Natural Science Foundation (No. LY16E030001), the National Natural Science Foundation of China (No. 51790503, and 51873181) and the Fundamental Research Funds for the Central Universities (No. 2017QNA4038).

References

- 1 H. Li, M. Zuo, T. Liu, Q. Chen, J. Zhang and Q. Zheng, *RSC Adv.*, 2016, **6**, 10099–10113.
- 2 Y. Gao, D. Cao, J. Liu, J. Shen, Y. Wu and L. Zhang, *Phys. Chem. Chem. Phys.*, 2015, **17**, 22959–22968.
- 3 Y. Feng, J. Hu, Y. Xue, C. He, X. Zhou, X. Xie, Y. Ye and Y. Mai, *J. Mater. Chem. A*, 2017, **5**, 13544–13556.
- 4 W. Zhang, I. Phang and T. Liu, *Adv. Mater.*, 2006, **18**, 73–77.
- 5 H. L. Lee, O. H. Kwon, S. M. Ha, B. G. Kim, Y. S. Kim, J. C. Won, J. H. Kim, J. H. Choi and Y. Yoo, *Phys. Chem. Chem. Phys.*, 2014, **16**, 20041–20046.
- 6 S. Mallakpour and A. Nezamzadeh Ezhieh, *Polym.-Plast. Technol. Eng.*, 2016, **56**, 1136–1145.
- 7 L. F. Loguercio, C. C. Alves, A. Thesing and J. Ferreira, *Phys. Chem. Chem. Phys.*, 2015, **17**, 1234–1240.
- 8 A. Goharpey and F. Goharpey, *Macromolecules*, 2008, **41**, 3276–3283.
- 9 W. Li, R. M. A. l'Abée and J. G. P. Goossens, *Macromol. Chem. Phys.*, 2013, **214**, 2705–2715.

- 10 Q. Chen, M. Zuo, R. Yang, J. Zhang, X. Lv, W. Zhang, Y. Song and Q. Zheng, *J. Polym. Sci., Part B: Polym. Phys.*, 2017, **55**, 1337–1349.
- 11 F. Hemmati, H. Garmabi and H. Modarress, *Polym. Compos.*, 2014, **35**, 2329–2342.
- 12 F. Hemmati, H. Garmabi and H. Modarress, *eXPRESS Polym. Lett.*, 2013, **7**, 996–1011.
- 13 F. Hemmati, H. Garmabi and H. Modarress, *Polymer*, 2014, **55**, 6623–6633.
- 14 R. Zhang, H. Cheng, C. Zhang, T. Sun, X. Dong and C. Han, *Macromolecules*, 2008, **41**, 6818–6829.
- 15 R. Zhang, X. Dong, X. Wang, H. Cheng and C. Han, *Macromolecules*, 2009, **42**, 2873–2876.
- 16 H. Hu, J. Li, C. Zhang and C. Han, *Polymer*, 2010, **51**, 4619–4626.
- 17 J. Yang, X. Chen, R. Fu, W. A. Luo, Y. Li and M. Zhang, *Phys. Chem. Chem. Phys.*, 2010, **12**, 2238–2245.
- 18 J. Khademzadeh Yeganeh, F. Goharpey, E. Moghimi, G. Petekidis and R. Foudazi, *Phys. Chem. Chem. Phys.*, 2015, **17**, 27446–27461.
- 19 T. Xia, Y. Huang, X. Jiang, Y. Lv, Q. Yang and G. Li, *Macromolecules*, 2013, **46**, 8323–8333.
- 20 H. Li, Q. Li, L. Li and Q. Yang, *J. Macromol. Sci., Part B: Phys.*, 2014, **53**, 993–1010.
- 21 M. Du, Q. Wu, M. Zuo and Q. Zheng, *Eur. Polym. J.*, 2013, **49**, 2721–2729.
- 22 C. Huang, J. Gao, W. Yu and C. Zhou, *Macromolecules*, 2012, **45**, 8420–8429.
- 23 J. Gao, C. Huang, N. Wang, W. Yu and C. Zhou, *Polymer*, 2012, **53**, 1772–1782.
- 24 W. Li, A. B. Spoelstra and J. G. P. Goossens, *Polym. Eng. Sci.*, 2015, **55**, 1951–1959.
- 25 P. Xavier and S. Bose, *Phys. Chem. Chem. Phys.*, 2015, **17**, 14972–14985.
- 26 G. P. Kar, P. Xavier and S. Bose, *Phys. Chem. Chem. Phys.*, 2014, **16**, 17811–17821.
- 27 P. Xavier and S. Bose, *J. Phys. Chem. B*, 2013, **117**, 8633–8646.
- 28 K. Sharma, M. Sharma, A. Chandra and S. Bose, *Macromol. Chem. Phys.*, 2013, **214**, 2651–2669.
- 29 M. Lee, H. Jeon, B. H. Min and J. H. Kim, *J. Appl. Polym. Sci.*, 2011, **121**, 743–749.
- 30 D. Pang, M. Zuo, J. Zhao and Q. Zheng, *Chin. J. Polym. Sci.*, 2013, **31**, 1470–1483.
- 31 M. H. Lee, C. H. Dan, J. H. Kim, J. Cha, S. Kim, Y. Hwang and C. H. Lee, *Polymer*, 2006, **47**, 4359–4369.
- 32 T. S. Muzata, P. L. Jagadeshvaran, G. P. Kar and S. Bose, *Phys. Chem. Chem. Phys.*, 2018, **20**, 19470–19485.
- 33 C. Lin, T. Liu, M. Zuo, H. Li, Q. Chen and Q. Zheng, *RSC Adv.*, 2015, **5**, 82259–82270.
- 34 C. Lin, M. Zuo, H. Li, T. Liu and Q. Zheng, *Chin. J. Polym. Sci.*, 2015, **33**, 1162–1175.
- 35 P. Xavier, K. Sharma, K. Elayaraja, K. S. Vasu, A. K. Sood and S. Bose, *RSC Adv.*, 2014, **4**, 12376.
- 36 G. Vleminckx, S. Bose, J. Leys, J. Vermant, M. Wubbenhorst, A. A. Abdala, C. Macosko and P. Moldenaers, *ACS Appl. Mater. Interfaces*, 2011, **3**, 3172–3180.
- 37 X. Yang, H. Tang, K. Cao, H. Song, W. Sheng and Q. Wu, *J. Mater. Chem.*, 2011, **21**, 6122–6135.
- 38 G. Wisanrakkit and J. K. Gillham, *J. Appl. Polym. Sci.*, 1990, **41**, 2885–2929.
- 39 C. W. Wise, W. D. Cook and A. A. Goodwin, *Polymer*, 1997, **38**, 3251–3261.
- 40 M. Peng, Q. Zheng, Y. Song and T. Zhao, *Macromolecules*, 2001, **34**, 8483–8489.
- 41 M. Zuo, M. Peng and Q. Zheng, *Polymer*, 2005, **46**, 11085–11092.
- 42 M. Zuo, Y. Shangguan and Q. Zheng, *Polym. Int.*, 2010, **59**, 787–795.
- 43 F. Roussel and P. Judeinstein, *Soft Matter*, 2008, **4**, 888–892.
- 44 T. Sato and C. C. Han, *J. Chem. Phys.*, 1988, **88**, 2057–2065.
- 45 X. Zhang, X. Yi and Y. Xu, *J. Appl. Polym. Sci.*, 2008, **109**, 2195–2206.
- 46 Y. Lin, Y. Shangguan, F. Chen, M. Zuo and Q. Zheng, *Polym. Int.*, 2013, **62**, 676–683.
- 47 W. Zhang, X. Chen, W. Luo, J. Yang, M. Zhang and F. Zhu, *Macromolecules*, 2009, **42**, 1720–1725.
- 48 D. Chopra, M. Kontopoulou, D. Vlassopoulos and S. G. Hatzikiriakos, *Rheol. Acta*, 2002, **41**, 10–24.
- 49 R. Li, W. Yu and C. Zhou, *Polym. Bull.*, 2006, **56**, 455–466.
- 50 W. Yu, R. Li and C. Zhou, *Polymer*, 2011, **52**, 2693–2700.
- 51 C. Gao, Z. Lu and Y. Yin, *Langmuir*, 2011, **27**, 12201–12208.
- 52 M. Nishimoto, H. Keskkula and D. R. Paul, *Polymer*, 1989, **30**, 1279–1286.
- 53 J. W. Cahn and J. E. Hilliard, *J. Chem. Phys.*, 1958, **28**, 258–267.
- 54 J. W. Cahn, *J. Chem. Phys.*, 1965, **42**, 93–99.
- 55 H. E. Cook, *Acta Metall.*, 1970, **18**, 297–306.
- 56 J. S. Langer, *Acta Metall.*, 1973, **21**, 1649–1659.
- 57 K. Binder and D. Stauffer, *Phys. Rev. Lett.*, 1974, **33**, 1006–1009.
- 58 H. Hu, Y. Shangguan, M. Zuo and Q. Zheng, *J. Polym. Sci., Part B: Polym. Phys.*, 2008, **46**, 1923–1931.
- 59 V. Edel, *Macromolecules*, 1995, **28**, 6219–6228.
- 60 J. S. Langer, M. Bar-on and H. D. Miller, *Phys. Rev. A*, 1975, **11**, 1417–1429.
- 61 E. D. Siggia, *Phys. Rev. A*, 1979, **20**, 595–605.
- 62 D. Wu, Y. Zhang, M. Zhang and Q. Fu, *Macromolecules*, 2009, **42**, 417–424.
- 63 S. H. Wu, *Polymer Interface and Adhesion*, New York, 1st edn, 1982.
- 64 A. Bharati, P. Xavier, G. P. Kar, G. Madras and S. Bose, *J. Phys. Chem. B*, 2014, **118**, 2214–2225.
- 65 P. Xavier, A. Bharati, G. Madras and S. Bose, *Phys. Chem. Chem. Phys.*, 2014, **16**, 21300–21309.