

Steroid metabolome analysis reveals prevalent glucocorticoid excess in primary aldosteronism

Wiebke Arlt,^{1,2} Katharina Lang,^{1,2} Alice J. Sitch,³ Anna S. Dietz,⁴ Yara Rhayem,⁴ Irina Bancos,^{1,5} Annette Feuchtinger,⁶ Vasileios Chortis,^{1,2} Lorna C. Gilligan,¹ Philippe Ludwig,⁴ Anna Riestler,⁴ Evelyn Asbach,⁴ Beverly A. Hughes,¹ Donna M. O'Neil,¹ Martin Bidlingmaier,⁴ Jeremy W. Tomlinson,⁷ Zaki K. Hassan-Smith,^{1,2} D. Aled Rees,⁸ Christian Adolf,⁴ Stefanie Hahner,⁹ Marcus Quinkler,¹⁰ Tanja Dekkers,¹¹ Jaap Deinum,¹¹ Michael Biehl,¹² Brian G. Keevil,¹³ Cedric H.L. Shackleton,^{1,14} Jonathan J. Deeks,³ Axel K. Walch,⁶ Felix Beuschlein,⁴ and Martin Reincke⁴

¹Institute of Metabolism and Systems Research, University of Birmingham, Birmingham, United Kingdom. ²Centre for Endocrinology, Diabetes and Metabolism, Birmingham Health Partners, Birmingham, United Kingdom. ³Institute for Applied Health Research, University of Birmingham, Birmingham, United Kingdom. ⁴Medizinische Klinik und Poliklinik IV, Ludwig-Maximilians-Universität München, Munich, Germany. ⁵Division of Endocrinology, Metabolism and Nutrition, Department of Internal Medicine, Mayo Clinic, Rochester, Minnesota, USA. ⁶Research Unit Analytical Pathology, Helmholtz Zentrum Munich, Oberschleißheim, Germany. ⁷Oxford Centre for Diabetes, Endocrinology and Metabolism, University of Oxford, Oxford, United Kingdom. ⁸Neurosciences and Mental Health Research Institute, School of Medicine, Cardiff University, Cardiff, United Kingdom. ⁹Department of Medicine I, Endocrine and Diabetes Unit, University Hospital Würzburg, Würzburg, Germany. ¹⁰Endocrinology in Charlottenburg, Berlin, Germany. ¹¹Department of Internal Medicine, Radboud University Medical Centre, Nijmegen, Netherlands. ¹²Johann Bernoulli Institute for Mathematics and Computer Science, University of Groningen, Groningen, Netherlands. ¹³Department of Clinical Biochemistry, University Hospital South Manchester, Manchester, United Kingdom. ¹⁴University of California at San Francisco Benioff Children's Hospital, Oakland, California, USA.

Role of funding source: The funders of the study had no role in the study design, data collection, data analysis, data interpretation, or writing of the report. The corresponding author had full access to all the data in the study and had final responsibility for the decision to submit for publication.

Authorship note: F. Beuschlein and M. Reincke contributed equally to this work.

Conflict of interest: W. Arlt is the holder of a patent for the differential diagnosis of adrenal tumors (PCT/GB2010/000274); all other authors have no conflict of interest to declare.

Submitted: January 30, 2017

Accepted: March 14, 2017

Published: April 20, 2017

Reference information:

JCI Insight. 2017;2(8):e93136. <https://doi.org/10.1172/jci.insight.93136>.

BACKGROUND. Adrenal aldosterone excess is the most common cause of secondary hypertension and is associated with increased cardiovascular morbidity. However, adverse metabolic risk in primary aldosteronism extends beyond hypertension, with increased rates of insulin resistance, type 2 diabetes, and osteoporosis, which cannot be easily explained by aldosterone excess.

METHODS. We performed mass spectrometry-based analysis of a 24-hour urine steroid metabolome in 174 newly diagnosed patients with primary aldosteronism (103 unilateral adenomas, 71 bilateral adrenal hyperplasias) in comparison to 162 healthy controls, 56 patients with endocrine inactive adrenal adenoma, 104 patients with mild subclinical, and 47 with clinically overt adrenal cortisol excess. We also analyzed the expression of cortisol-producing CYP11B1 and aldosterone-producing CYP11B2 enzymes in adenoma tissue from 57 patients with aldosterone-producing adenoma, employing immunohistochemistry with digital image analysis.

RESULTS. Primary aldosteronism patients had significantly increased cortisol and total glucocorticoid metabolite excretion (all $P < 0.001$), only exceeded by glucocorticoid output in patients with clinically overt adrenal Cushing syndrome. Several surrogate parameters of metabolic risk correlated significantly with glucocorticoid but not mineralocorticoid output. Intratumoral CYP11B1 expression was significantly associated with the corresponding in vivo glucocorticoid excretion. Unilateral adrenalectomy resolved both mineralocorticoid and glucocorticoid excess. Postoperative evidence of adrenal insufficiency was found in 13 (29%) of 45 consecutively tested patients.

CONCLUSION. Our data indicate that glucocorticoid cosecretion is frequently found in primary aldosteronism and contributes to associated metabolic risk. Mineralocorticoid receptor antagonist therapy alone may not be sufficient to counteract adverse metabolic risk in medically treated patients with primary aldosteronism.

FUNDING. Medical Research Council UK, Wellcome Trust, European Commission.

Introduction

Primary aldosteronism is the most common form of secondary hypertension, affecting 3%–5% of the general hypertensive population and 8%–10% of patients referred to specialist hypertension services (1–4). The main causes of primary aldosteronism are bilateral adrenal hyperplasia and unilateral aldosterone-producing adrenal adenoma (1), whereas inherited forms of primary aldosteronism, such as familial hyperaldosteronism type 1 and 3, account for less than 1% of cases. In the majority of aldosterone-producing adenomas, somatic driver mutations in the *KCNJ5*, *ATP1A1*, *ATP2B3*, *CACNA1D*, and *CTNNB1* genes have been identified (5–9). Differentiating unilateral aldosterone-producing adenoma from bilateral adrenal hyperplasia as the cause of primary aldosteronism provides the basis for therapeutic stratification. Adenomas are generally surgically removed, while patients with bilateral hyperplasia receive long-term treatment with mineralocorticoid receptor antagonists.

Hypertension is a strong predictor of cardiovascular morbidity and mortality (10). Patients with primary aldosteronism have an even higher cardiovascular risk than patients with essential hypertension (11–15). However, in addition, a number of reports have described an increased prevalence of insulin resistance, type 2 diabetes mellitus, osteoporosis, as well as clinically relevant depression and anxiety in patients with primary aldosteronism (16–23). These conditions would be more logically attributable to glucocorticoid rather than mineralocorticoid excess. Current diagnostic work-up in primary aldosteronism, however, does not include assessment for hypercortisolism (1).

Here, we employed mass spectrometry to explore the steroid metabolome in a large cohort of primary aldosteronism patients who underwent detailed metabolic phenotyping, in addition to subtype specification and genotyping. We compared the results of 24-hour urine steroid metabolite excretion, reflective of net steroid production, to those in healthy controls and patients with adrenal adenomas including subclinical and overt adrenal Cushing's syndrome.

Results

Demographics and clinical metabolic phenotype. We evaluated an exploratory cohort of 220 consecutively recruited patients with primary aldosteronism: an exploratory cohort comprising 103 patients with unilateral aldosterone-producing adenoma, 71 patients with bilateral adrenal hyperplasia, and a confirmatory cohort of 46 patients with unilateral adenoma. For comparison, we included 162 healthy control subjects and 3 additional patient groups: 56 patients with endocrine-inactive adrenal adenoma; 104 patients with subclinical, mild adrenal cortisol excess; and 47 patients with clinically overt adrenal Cushing syndrome. The clinical characteristics of all study subjects are summarized in Table 1. Following the analysis of the exploratory cohort results, we prospectively recruited a confirmatory cohort of 46 patients with primary aldosteronism; Figure 1 provides a flowchart showing the patient and comparator groups and the diagnostic assessments they underwent.

Steroid metabolome analysis in primary aldosteronism. A heatmap visualization sorted in the order of increasing excretion of the major aldosterone metabolite tetrahydroaldosterone (Figure 2A) demonstrated, as expected, a clustering of the primary aldosteronism cases to the right of the heatmap, consistent with increased aldosterone production. Surprisingly, an equivalent heatmap visualizing glucocorticoid output, sorted in the order of increasing cortisol excretion, also demonstrated a clear clustering of primary aldosteronism patients among those with the highest glucocorticoid output (Figure 2B).

As expected, 24-hour tetrahydroaldosterone excretion was significantly increased in primary aldosteronism patients (healthy controls, median 30 [interquartile range 22–44] $\mu\text{g}/24\text{ h}$; primary aldosteronism, 99 [interquartile range 60–159] $\mu\text{g}/24\text{ h}$; $P < 0.001$) (Supplemental Information [SI] Appendix and Supplemental Figure 1A; supplemental material available online with this article; <https://doi.org/10.1172/jci.insight.93136DS1>). However, quantitative comparison of steroid excretion between primary aldosteronism patients and healthy controls also revealed 24-hour total glucocorticoid output as significantly increased in primary aldosteronism (11,306 [interquartile range 7,999–14,907] $\mu\text{g}/24\text{ h}$ vs. 8,262 [6,337–11,070] $\mu\text{g}/24\text{ h}$ in healthy controls; $P < 0.001$), with similar findings for cortisol excretion (SI Appendix and Supplemental Figure 1, B and C).

Both primary aldosteronism subtypes, unilateral aldosterone-producing adrenal adenoma and bilateral adrenal hyperplasia, had significantly higher glucocorticoid output than controls, with no significant difference between the 2 disease groups (SI Appendix and Supplemental Figure 2). Similarly, comparison of glucocorticoid excretion in patients with adenomas harboring somatic *KCNJ5* mutations ($n = 31$) did not

Table 1. Clinical characteristics of the primary aldosteronism (PA) patients and the comparator groups

	N	Male n/N %	Age (years)	Body mass index (kg/m²) Mean (SD)	Systolic blood pressure (mmHg) Mean (SD)	Diastolic blood pressure (mmHg) Mean (SD)	Hypertension n/N %	Treatment for hypertension n/N %
Healthy controls	162	103/162 64%	46.6 (14.5) (n = 156)	27.9 (5.3) (n = 155)	134 (19) (n = 126)	78 (12) (n = 126)	32/162 20%	13/162 8%
PA Exploratory cohort: APA	103	65/103 63%	50.9 (10.5) (n = 103)	28.3 (4.8) (n = 92)	154 (20) (n = 89)	92 (12) (n = 89)	103/103 100%	103/103 100%
PA Exploratory cohort: BAH	71	50/71 70%	50.6 (10.3) (n = 71)	28.6 (4.4) (n = 54)	152 (20) (n = 54)	95 (13) (n = 54)	71/71 100%	71/71 100%
PA Confirmatory cohort: APA	46	27/46 (59%)	49.4 (8.7) (n = 46)	29.2 (6.0) (n = 44)	153 (18) (n = 46)	93 (10) (n = 46)	46/46 100%	46/46 100%
Patients with EIA	56	40/56 71%	56.6 (11.4) (n = 56)	30.7 (6.3) (n = 55)	–	–	32/56 57%	32/54 59%
Patients with subclinical Cushing's (SC1)	55	18/54 33%	65.1 (11.2) (n = 54)	28.4 (5.1) (n = 50)	–	–	33/55 60%	29/54 54%
Patients with subclinical Cushing's (SC2)	49	5/18 28%	63.8 (11.4) (n = 18)	29.5 (6.1) (n = 40)	–	–	36/48 75%	36/47 76%
Patients with overt adrenal Cushing's	47	5/19 26%	54.5 (12.5) (n = 19)	30.1 (7.3) (n = 40)	–	–	32/44 73%	28/42 67%

The groups included healthy controls, patients with an endocrine-inactive adrenal adenoma (EIA), patients with an adrenal adenoma and subclinical Cushing's syndrome (differentiated in 2 groups in line with recently published consensus diagnostic criteria (48): SC1, morning cortisol after 1 mg dexamethasone overnight > 50 and ≤ 138 nmol/l; SC2, > 138 nmol/l), and patients with clinically overt adrenal Cushing's syndrome. APA, unilateral aldosterone-producing adenoma; BAH, bilateral adrenal hyperplasia.

differ from those with non-*KCNJ5* mutations ($n = 23$) and wild type ($n = 34$), with significantly increased glucocorticoid excretion in all 3 (data not shown).

Glucocorticoid output in primary aldosteronism and adverse metabolic risk phenotype. Correlation analyses adjusted for sex and age revealed 24-hour total glucocorticoid output as significantly correlated with body mass index and markers of insulin resistance (fasting insulin, insulin after oral glucose challenge; homeostasis model assessment of insulin resistance [HOMA-IR]) in both control subjects and primary aldosteronism (all $P < 0.01$). However, in primary aldosteronism patients, total glucocorticoid output also significantly correlated with additional parameters of adverse metabolic risk (waist circumference [$P < 0.001$], high-density lipoprotein [$P < 0.001$], and diastolic blood pressure [$P < 0.01$]; Supplemental Table 1). By contrast, tetrahydroaldosterone excretion only correlated with systolic blood pressure, albeit above our stringent level of significance ($P \leq 0.01$), with a P value of 0.02 (Supplemental Table 1).

Steroid output in primary aldosteronism in comparison to Cushing's patients. To put the extent of glucocorticoid excess into context, we compared glucocorticoid output in the primary aldosteronism patients to that in patients with adrenocortical adenomas that were either endocrine inactive or fulfilled the diagnostic criteria for subclinical and clinically overt Cushing's syndrome (Figure 3, SI Appendix, and Supplemental Table 2). This revealed significantly increased cortisol output in primary aldosteronism that was at least as high as in patients with subclinical Cushing's syndrome, a group with documented adverse cardiovascular and metabolic consequences due to mild cortisol excess (24–26). Furthermore, total glucocorticoid excretion was significantly higher in primary aldosteronism (median 11,306 [interquartile range 7,999–14,907] $\mu\text{g}/24$ h) than in controls (8,262 [6,337–11,070] $\mu\text{g}/24$ h), while subclinical Cushing's patients did not significantly differ from controls (SI Appendix and Supplemental Table 2). The percentage difference in total glucocorticoid excretion relative to healthy controls was 25.0% (95% CI 14.4, 35.6) in primary aldosteronism and only 3.4% (95% CI –21.4, 28.1) in patients with subclinical Cushing's syndrome (SI Appendix and Supplemental Table 3).

A detailed pathway analysis of the steroid metabolome in the 4 different disease groups revealed distinct differences (SI Appendix and Supplemental Figure 3). The primary aldosteronism group showed significantly increased excretion of all metabolites of the mineralocorticoid and glucocorticoid synthesis pathways. Their androgen production largely resembled those in controls but showed an increased excretion of the major adrenal androgen metabolite 11 β -hydroxyandrosterone (SI Appendix and Supplemental

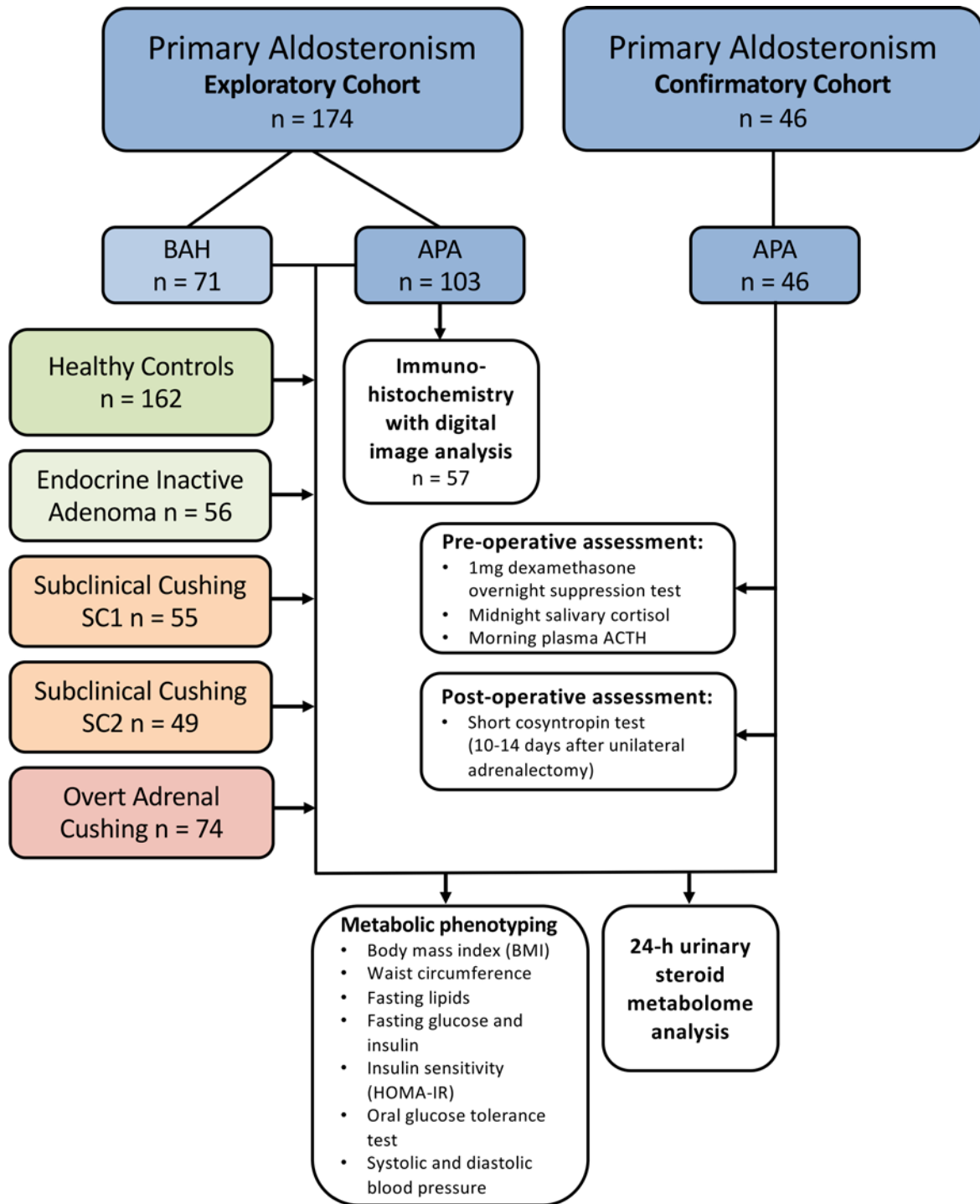


Figure 1. CONSORT diagram visualizing the included patient and comparator groups and the performed diagnostic work-up. After analysis of the results from the exploratory cohort, 46 patients were prospectively recruited with consecutive enrollment into the confirmatory cohort that underwent additional pre- and postoperative assessment of cortisol production. APA, unilateral aldosterone-producing adenoma; ACTH, adrenocorticotropic hormone; BAH, bilateral adrenal hyperplasia; HOMA-IR, homeostasis model assessment of insulin resistance.

Figure 3A). This was found in primary aldosteronism, but none of the other groups (Figure 3D). By contrast, the overt Cushing’s group (SI Appendix and Supplemental Figure 3B) showed decreased androgen output in the presence of increased glucocorticoid and mineralocorticoid precursor metabolites. The subclinical Cushing’s groups (SI Appendix and Supplemental Figure 3, C and D) showed a similar pattern to overt Cushing’s, albeit attenuated with only 2 of 9 glucocorticoid metabolites significantly increased.

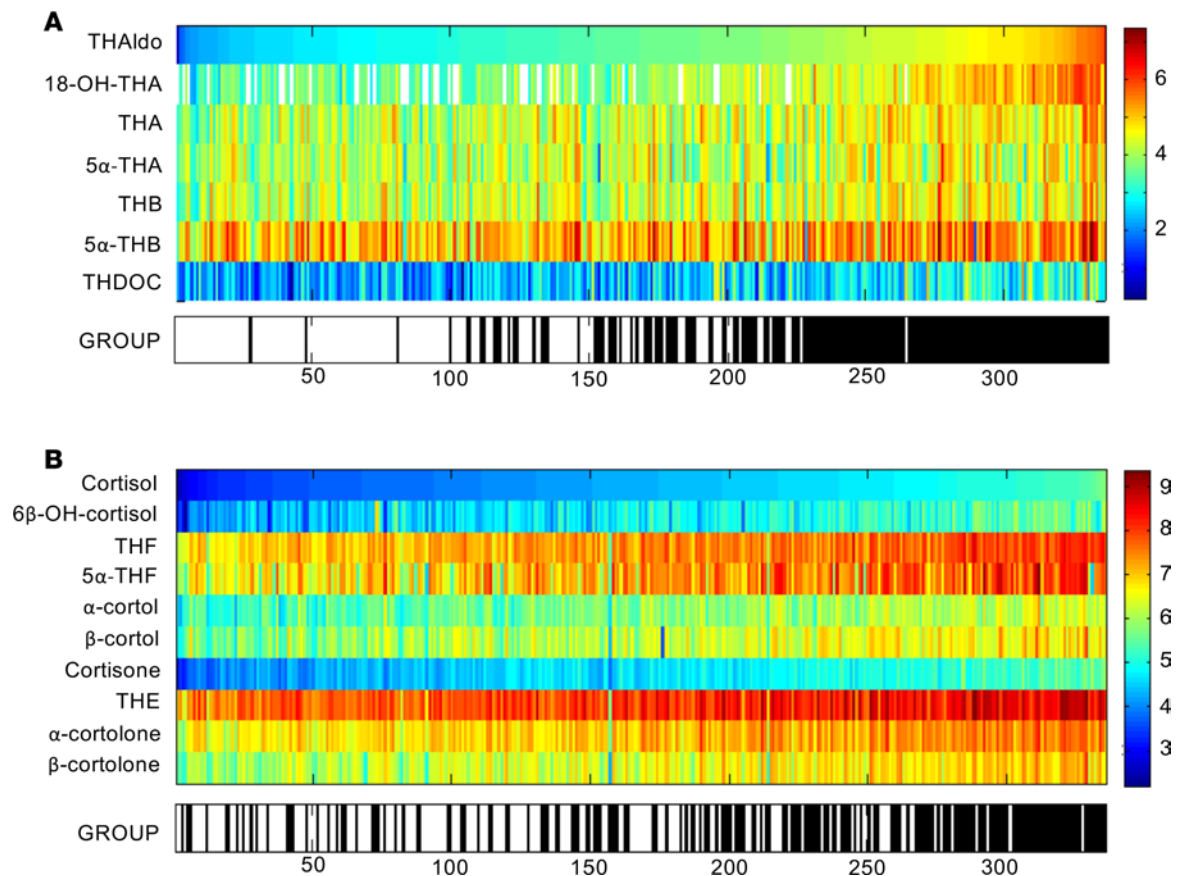


Figure 2. Heatmap visualizations of steroid metabolome profiling results in 174 primary aldosteronism patients. Steroid metabolite excretion in 24-hour urine was measured by gas chromatography-mass spectrometry in selected-ion-monitoring mode. Heatmap visualizations depict log-transformed steroid metabolite excretion values in the primary aldosteronism patients (group: black) in comparison to 162 healthy controls (group: white). **(A)** Mineralocorticoid and mineralocorticoid precursor metabolites ordered according to increasing amounts of tetrahydroaldosterone (THAldo) excretion. **(B)** Glucocorticoid metabolites in order of increasing amounts of cortisol excretion. Scale and color code were chosen separately for each panel according to the respective range of observed values. THA, tetrahydro-11-dehydrocorticosterone; THB, tetrahydrocorticosterone; THDOC, tetrahydro-11-deoxycorticosterone; THF, tetrahydrocortisol; THE, tetrahydrocortisone.

Patients with primary aldosteronism and overt Cushing's patients showed significant increases in all 9 glucocorticoid metabolites (SI Appendix and Supplemental Figure 3, A and B).

Steroid output in primary aldosteronism due to unilateral adenoma before and after adrenalectomy. Comparing preoperative to postoperative steroid excretion in a cohort of 46 patients with primary aldosteronism due to unilateral aldosterone-producing adenoma, we found that following surgical removal of the adenoma, not only tetrahydroaldosterone but also total glucocorticoid output significantly decreased (Figure 4, A–C). Similarly, excretion of 11β-hydroxyandrosterone, the metabolite of the major adrenal androgen precursor 11β-hydroxyandrostenedione, significantly decreased after surgery (Figure 4D, SI Appendix, and Supplemental Table 4). Heatmap visualization comparing pre- and postoperative urine steroid metabolomes revealed patient clusters with increased mineralocorticoid and glucocorticoid production prior to surgery (SI Appendix and Supplemental Figure 4, A and B), but also demonstrated distinct, albeit smaller clusters of patients with preoperatively increased 11β-hydroxyandrosterone (SI Appendix and Supplemental Figure 4C). This suggested that the source of glucocorticoid and adrenal androgen excess in these patients was indeed the surgically removed adrenocortical adenoma.

Intratumoral steroidogenic enzyme expression and correlation with in vivo steroid output. We next carried out immunohistochemistry of a tissue microarray composed of surgical material from 57 of our aldosterone-producing adrenal adenoma patients and quantified intratumoral steroidogenic enzyme expression by digital image analysis. We analyzed the expression of CYP11B1, which is required for the synthesis of cortisol and 11β-hydroxyandrostenedione, and CYP11B2, which catalyzes aldosterone synthesis. Results showed that

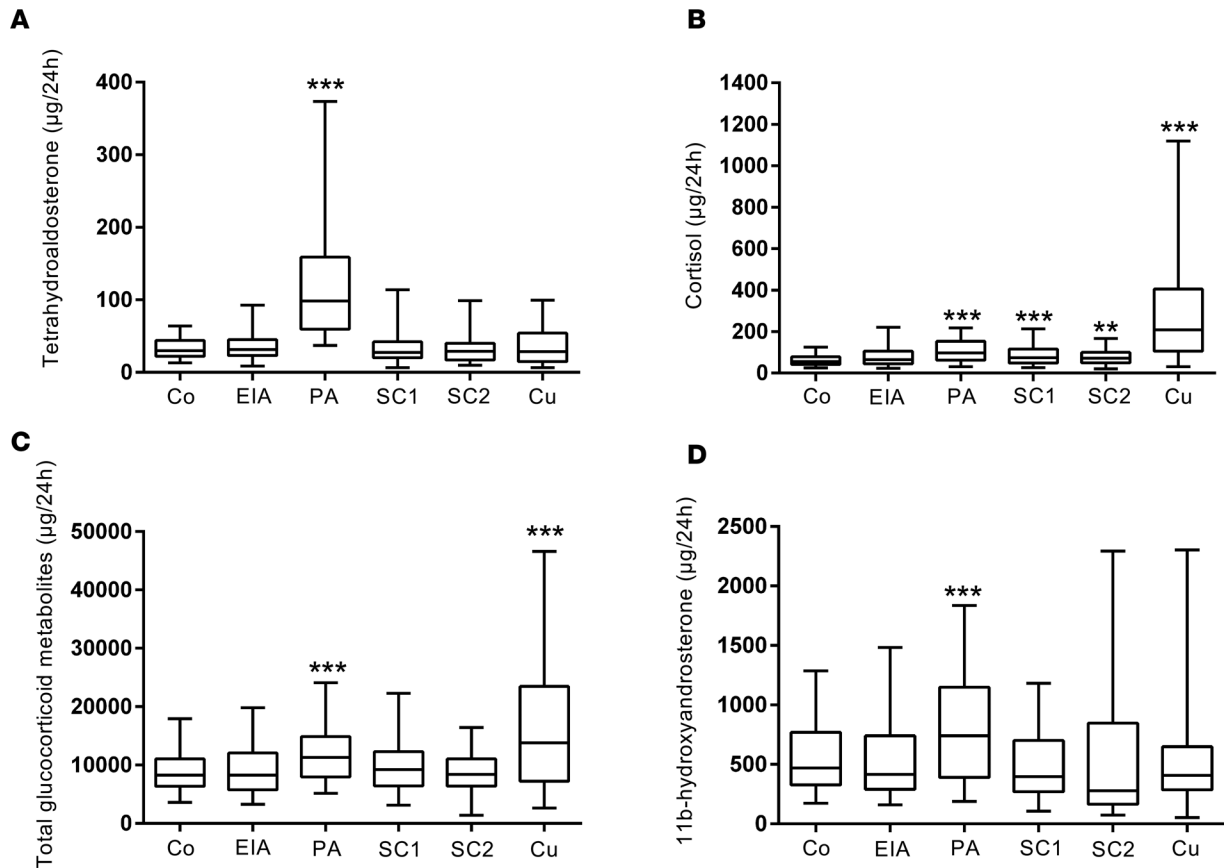


Figure 3. Steroid metabolite excretion in primary aldosteronism in comparison to healthy controls and patients with endocrine-inactive and cortisol-producing adrenal adenomas. The panels show the 24-hour urinary excretion of tetrahydroaldosterone (A), cortisol (B), total glucocorticoid metabolites (C), and the major adrenal androgen metabolite 11β-hydroxyandrosterone (D) in primary aldosteronism patients (PA; $n = 174$) in comparison to healthy controls (Co; $n = 162$), patients with endocrine-inactive adrenal adenoma (EIA; $n = 56$), patients with subclinical Cushing's (differentiated into 2 groups: SC1 ($n = 55$), morning cortisol after 1 mg dexamethasone overnight > 50 and < 138 nmol/l; SC2 ($n = 49$), morning cortisol > 138 nmol/l), and overt adrenal Cushing's syndrome patients (Cu; $n = 47$). Boxes represent median and interquartile range, whiskers represent 5th and 95th centiles. ** $P < 0.01$ versus controls, *** $P < 0.001$ versus controls. Comparisons between groups were made with linear regression models to adjust for age and sex in comparisons between all 6 groups.

CYP11B1 immunostaining was associated with the excretion of glucocorticoids ($P < 0.05$) and the major 11β-hydroxyandrostenedione metabolite 11β-hydroxyandrosterone ($P < 0.01$), but not with tetrahydroaldosterone. Vice versa, CYP11B2 was associated with tetrahydroaldosterone ($P < 0.05$), but not with glucocorticoid or 11β-hydroxyandrosterone excretion (Table 2). Of note, tumor morphology consistently differed when comparing adenoma tissues in relation to glucocorticoid output, with a zona fasciculata-type pattern in tissues from patients with the lowest glucocorticoid excretion, and a pattern resembling zona glomerulosa architecture in tissue from patients with the highest glucocorticoid excretion (examples shown in Figure 5).

Glucocorticoid excess in primary aldosteronism and postoperative cortisol reserve. After the analysis of our results suggested that glucocorticoid excess represents a prevalent and highly relevant feature in primary aldosteronism, we prospectively assessed the pre- and postoperative adrenal function in a confirmatory cohort of 46 consecutively recruited patients with unilateral aldosterone-producing adenoma. Interestingly, despite significantly increased urinary glucocorticoid output, very few patients showed results indicative of glucocorticoid excess, using either an overnight dexamethasone suppression test or late-night salivary cortisol. However, preoperatively, plasma corticotropin (adrenocorticotropic hormone, ACTH) was low normal, with a median of 14 [interquartile range 9–19] pg/ml, which increased significantly ($P = 0.0012$) to 22 [interquartile range 16–39] pg/ml 2 weeks postoperatively (reference range 4–50 pg/ml).

Clinically relevant glucocorticoid excess due to an adrenal tumor is typically associated with postoperative suppression of the hypothalamic-pituitary-adrenal axis and hence suppression of function of the contralateral adrenal gland. This results in the need for hydrocortisone replacement in patients with subclinical and overt adrenal Cushing's syndrome after curative adrenalectomy (27). Therefore,

Table 2. Association between in vivo 24-hour urinary steroid output and immunostaining for CYP11B1 and CYP11B2 in 57 patients with aldosterone-producing adenoma

Immunohistochemistry for expression of	Digital immunostaining parameter	Percentage change (95% CI; <i>P</i>) per unit change		
		Total glucocorticoid metabolites	11 β -Hydroxyandrosterone	Tetrahydroaldosterone
CYP11B1	IHC1	669 (108–1,231); 0.020	1332 (336–2,328); 0.010	402 (–371–1,176); 0.302
CYP11B1	IHC2	0.6 (0.0–1.1); 0.035	1.3 (0.3–2.3); 0.009	–0.2 (–1.0–0.5); 0.514
CYP11B2	IHC1	106 (–51–263); 0.181	186 (–96–468); 0.192	241 (40–441); 0.020
CYP11B2	IHC2	0.4 (–0.2–0.9); 0.215	0.6 (–0.5–1.6); 0.285	0.8 (0.0–1.5); 0.036

Results were calculated by linear regression modeling of associations between in vivo 24-hour urinary steroid output and immunohistochemical steroidogenic enzyme expression in the corresponding adenoma tissues, as assessed by staining intensity parameters IHC1 and IHC2 quantified using digital image analysis. Log-transformed outcome data were used to reduce the impact of high outliers, and estimates interpreted as approximate percentage changes (95% CI; *P*) per unit change.

46 consecutively recruited patients underwent a cosyntropin stimulation test to assess cortisol reserve 10–14 days after removal of the aldosterone-producing adrenocortical adenoma. Consistent with the evidence of glucocorticoid excess in the steroid metabolome analysis, 13 of 45 (29%) patients failed to appropriately respond to cosyntropin stimulation (serum cortisol 30 minutes after 250 μ g ACTH_{1–24} < 15.6 μ g/dl [<430 nmol/l]), with both baseline and stimulated serum cortisol significantly lower in primary aldosteronism than in 82 healthy controls ($P < 0.01$) (Figure 4, E and F).

Discussion

A number of previous case reports or small case series (28–35) have reported excess glucocorticoid secretion in primary aldosteronism patients, a phenomenon thought to represent a rarity. However, the current study provides evidence for the concomitant presence of glucocorticoid excess in a large proportion of patients with primary aldosteronism, an observation we found to be independent of primary aldosteronism subtype or tumor tissue genotypes. Of note, we found that glucocorticoid output in primary aldosteronism was at least similar to that in subclinical Cushing's syndrome, a cohort widely reported to suffer from increased cardiovascular risk (24–26). Intriguingly, we found that glucocorticoid excess significantly correlated with several parameters indicative of adverse metabolic risk in primary aldosteronism, including waist circumference, high-density lipoprotein, and diastolic blood pressure, in addition to body mass index and insulin resistance that were influenced by obesity in both controls and primary aldosteronism patients. By contrast, there was no significant association of mineralocorticoid output with metabolic risk parameters. This suggests that the previously unrecognized glucocorticoid excess in primary aldosteronism is a major determinant of metabolic risk. This potentially novel biochemical characteristic of primary aldosteronism could provide an explanation for comorbidities that are observed but difficult to explain in the context of hyperaldosteronism, such as insulin resistance (16–20), osteoporotic fractures (21, 36), and depression (22, 23). Patients with primary aldosteronism who do not undergo surgery currently receive medical treatment with mineralocorticoid receptor antagonists. Our findings indicate that it should be investigated whether such patients might need additional, glucocorticoid-opposing treatment to mitigate persistent cardiovascular risk. That this is clinically highly relevant is further supported by a recent cohort study in 2,533 patients with primary aldosteronism, which found a particularly increased osteoporotic fracture risk in women with primary aldosteronism who were not treated surgically but medically with mineralocorticoid receptor antagonists (37).

In autonomous adrenal cortisol excess, i.e., adrenal Cushing's syndrome, adrenal androgens are usually downregulated due to reduced hypothalamic-pituitary feedback to the adrenal glands in response to the glucocorticoid excess. However, steroid metabolome analysis in our large primary aldosteronism cohort revealed not only glucocorticoid excess, but normal or increased androgen output. Intriguingly, steroid pathway analysis revealed evidence for additional autonomous production of 11 β -hydroxyandrostenedione, which is a major product of adrenal steroidogenesis (38) and a direct precursor to potent androgens (39, 40). Steroid pathway analysis results were strongly corroborated by the results of quantitative immunohistochemistry in aldosterone-producing adenoma tissue, demonstrating a significant association of intratumoral expression of the CYP11B1 enzyme, required for the synthesis of both glucocorticoids and 11 β -hydroxyandrostenedione,

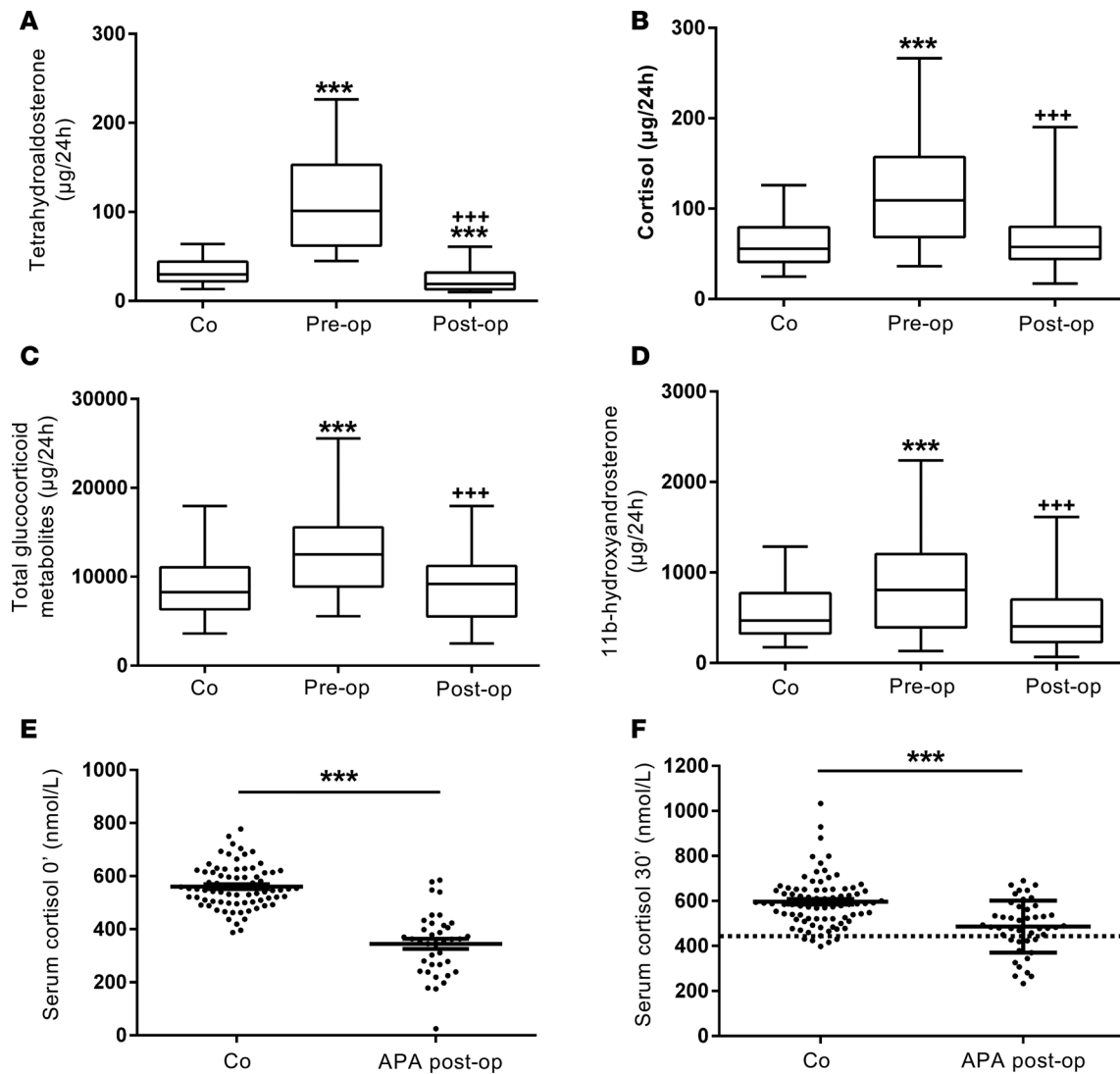


Figure 4. Steroid excretion in 46 patients with primary aldosteronism due to aldosterone-producing adenoma (APA) before and after unilateral adrenalectomy in comparison to healthy controls ($n = 162$). The panels show 24-hour urinary excretion of tetrahydroaldosterone (A), cortisol (B), total glucocorticoid metabolites (C), and 11 β -hydroxyandrostosterone (D). *** $P < 0.001$ versus controls (Co); *** $P < 0.001$ versus preoperative. Boxes represent median and interquartile range, whiskers represent 5th and 95th centiles. Panels E and F show individual values and mean \pm SEM for serum cortisol at baseline and 30 minutes after cosyntropin stimulation in 46 primary aldosteronism patients tested 2 weeks postoperatively, in comparison to 82 healthy controls. The dotted line represents the diagnostic cut-off for adrenal insufficiency (serum cortisol 30 minutes after 250 μ g cosyntropin < 15.6 μ g/dl [< 430 nmol/l]), equivalent to the 5th centile of the cortisol response in the 82 healthy controls. *** $P < 0.001$ versus controls. Comparisons of steroid excretion before and after unilateral adrenalectomy were made using 2-sided Wilcoxon's signed-rank test. Linear models were also fitted comparing preoperative and postoperative log-transformed steroid-metabolite measures to controls, adjusting for age and sex.

with *in vivo* excretion of the corresponding steroid metabolites. Intriguingly, cosecretion of glucocorticoids could also potentially explain the recent finding that adrenal vein sampling performs less well than previously assumed in differentiating unilateral from bilateral adrenal causes of primary aldosteronism (41), as this test relies on the assumption of an increase in the aldosterone over cortisol ratio in unilateral disease, which may be diluted in adenomas with cosecretion.

Glucocorticoid excess in mild, subclinical adrenal Cushing's syndrome is associated with overnight dexamethasone test results that are regularly abnormal, while 24-hour urine glucocorticoid excretion is often normal. By contrast, we found that glucocorticoid excess in primary aldosteronism regularly presented with increased 24-hour urine glucocorticoid output preoperatively and one-third of patients showed evidence of compromised cortisol reserve postoperatively. However, only a few patients failed the overnight dexamethasone test and at present the reason for this is unclear. Patients with primary

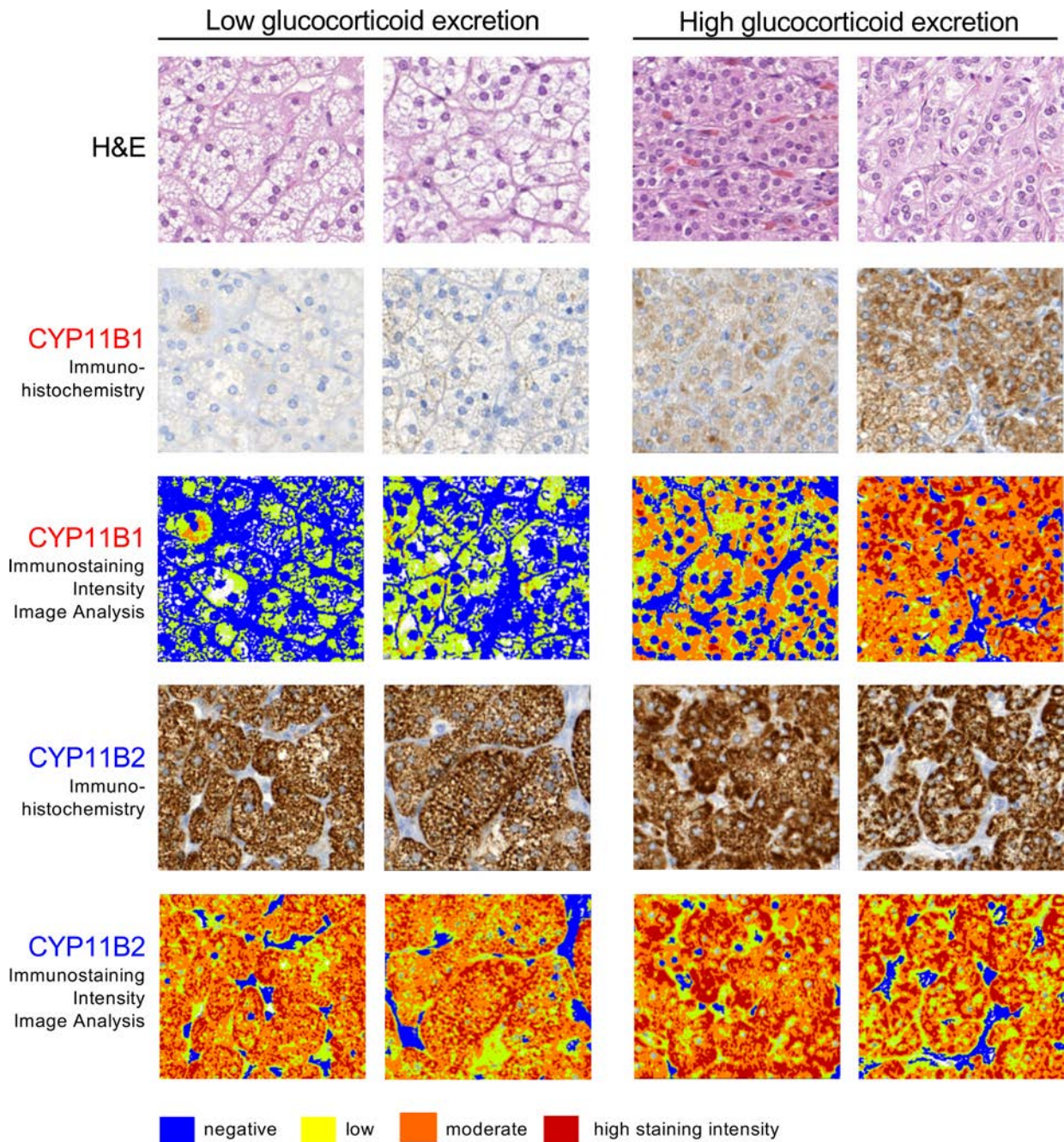


Figure 5. Immunohistochemistry with digital image analysis for steroidogenic enzyme expression in aldosterone-producing adrenal adenoma tissue in relation to in vivo 24-hour glucocorticoid excretion. A tissue microarray with adenoma tissue from 57 patients was studied by immunohistochemistry for expression of CYP11B1, required for cortisol and 11 β -hydroxyandrostenedione synthesis, and CYP11B2, the enzyme responsible for aldosterone synthesis, followed by digital image analysis for quantification of staining intensity. Representative immunohistochemistry examples from 2 patients with in vivo glucocorticoid excretion within the lowest and highest quartiles, respectively, are shown (total original magnification in all panels, $\times 20$).

pigmented nodular adrenocortical disease, another adrenal cause of glucocorticoid excess, do not suppress after dexamethasone either, but have been shown to paradoxically increase glucocorticoid production in response to dexamethasone (42).

The high rate of patients failing cosyntropin testing following surgical removal of their aldosterone-producing adrenal adenoma, 29% of consecutively recruited subjects, was confirmed in direct comparison to healthy controls measured by the same mass spectrometry-based assay. Adrenal insufficiency has not been appreciated as likely to occur postoperatively in primary aldosteronism, which in light of our findings now will have to be reconsidered. In our current experience, postoperative adrenal insufficiency

is transient, mostly recovering after 3 to 6 months. However, during this period patients are exposed to the potentially fatal risk of adrenal crisis as they are not able to appropriately increase their cortisol production in case of major illness or surgery. A recent study (43) was the first to assess the impact of unilateral adrenalectomy itself on cortisol reserve, documenting normal responses to cosyntropin testing in 30 live kidney donors tested on postoperative days 1 and 28. One would have anticipated these results, given that the physiological response to adrenalectomy will be a counter-regulatory upregulation of ACTH, stimulating cortisol production in the remaining adrenal gland. Therefore, those recent findings further corroborate that the high rate of failed responses to cosyntropin in our primary aldosteronism patients cannot be explained by mere loss of adrenal tissue volume, but will be a consequence of preoperative cortisol excess, resulting in reduced responsiveness of the contralateral adrenal and hence reduced cosyntropin-stimulated cortisol output.

Conclusions. Our findings demonstrate that glucocorticoid excess is a highly prevalent feature in primary aldosteronism and closely linked to adverse metabolic risk; we also show evidence of autonomous adrenal androgen production in primary aldosteronism. Steroid metabolome analysis also demonstrated increased mineralocorticoid output in the Cushing comparator cohort, suggesting that the traditional division into Cushing's and Conn's is not as clear cut as previously assumed. Steroid metabolomics is a highly sensitive diagnostic and biomarker tool in adrenal disease (44, 45), including primary aldosteronism (46, 47); our study now demonstrates the value of steroid metabolome analysis as a discovery tool for the dissection of disease mechanisms. Further studies will have to assess the clinical impact of the discovery of "Connshing" syndrome, including prospective randomized studies to clarify whether primary aldosteronism patients should receive additional glucocorticoid-opposing treatment when treated medically with mineralocorticoid receptor antagonists to efficiently counteract adverse metabolic risk.

Methods

Patients and controls. Patients and controls were recruited at 5 centers participating in the European Network for the Study of Adrenal Tumors. All participants provided written informed consent, and the study was approved by the ethics committee at each participating institution.

At the time of diagnosis, all primary aldosteronism patients underwent systematic metabolic and cardiovascular phenotyping. Metabolic phenotyping was also carried out in healthy controls and the other comparator cohorts. Primary aldosteronism patients were compared to 5 comparator cohorts (Table 1): healthy controls ($n = 162$); patients with endocrine-inactive adrenal adenoma ($n = 56$); patients with adrenal adenomas associated with mild, subclinical Cushing's syndrome ($n = 104$); and patients with overt clinical Cushing's syndrome ($n = 47$) due to a cortisol-producing adrenal adenoma. In the latter 3 groups, imaging, histopathology, and follow-up investigations had confirmed the benign nature of the adrenal lesion.

The diagnosis of corticotropin-independent adrenal Cushing's syndrome was based on a combination of clinical and biochemical features of hypercortisolism. Patients were classified as suffering from overt Cushing's syndrome if they had at least 3 abnormal biochemical test results indicative of Cushing's, in addition to insufficiently suppressed serum cortisol levels ($>5 \mu\text{g/dl}$ [$>138 \text{ nmol/l}$]) after overnight administration of 1 mg of dexamethasone. Biochemical tests considered indicative of Cushing's were increased urinary excretion of free cortisol, increased late-night salivary cortisol levels, and suppressed plasma corticotropin levels ($<10 \text{ pg/ml}$ [$<2.2 \text{ pmol/l}$]).

Overt Cushing's syndrome was also diagnosed if the patients had at least 2 biochemical results indicative of Cushing's in the presence of typical catabolic signs of hypercortisolism (i.e., muscle weakness, skin fragility, osteoporosis). Patients without typical catabolic signs, nonsuppressible serum cortisol levels, and up to 2 other abnormal biochemical tests were diagnosed as subclinical Cushing's. For the purposes of our analysis, we divided the subclinical Cushing's patients into 2 groups, in line with recently published consensus diagnostic criteria (48): possible autonomous cortisol excess, SC1, and autonomous cortisol excess, SC2, defined by serum cortisol after overnight administration of 1 mg of dexamethasone (SC1: > 1.8 and $\leq 5.0 \mu\text{g/dl}$ [> 51 and $\leq 138 \text{ nmol/l}$]); SC2: $> 5.0 \mu\text{g/dl}$ [$>138 \text{ nmol/l}$]). Patients were considered to have endocrine-inactive adrenal lesions if they had normal biochemical test results and no catabolic signs.

To independently confirm the findings arising from the exploratory primary aldosteronism cohort, we prospectively recruited 46 consecutive patients diagnosed with lateralized aldosteronism undergoing unilateral adrenalectomy. In addition to 24-hour urine steroid profiling, they underwent preoperative assessment for glucocorticoid excess including dexamethasone (1 mg) overnight suppression test, late-night salivary

cortisol, and morning plasma ACTH; all patients underwent a postoperative cosyntropin test (serum cortisol at baseline and 30 minutes after intravenous injection of 250 μg ACTH₁₋₂₄, Synacthen) 10–14 days after unilateral adrenalectomy.

Genetic analysis. In 88 patients who underwent adrenalectomy for aldosterone-producing adenoma, DNA was extracted from tumor tissue as described previously (49). DNA was subjected to targeted sequencing of genes previously identified to harbor somatic mutations in aldosterone-producing adenomas (*KCNJ5*, *ATP1A1*, *ATP2B3*, *CACNA1D*, and *CTNNB1*), as described previously (49). Thereby, tumor tissues from 54 patients were found to harbor somatic mutations in the following genes: *KCNJ5* ($n = 31$), *ATP1A1* ($n = 8$), *ATP2B3* ($n = 4$), *CACNA1D* ($n = 6$), *CTNNB1* ($n = 1$), *PRKACA* ($n = 2$) (50), and *CACNA1D+CTNNB1* ($n = 2$). Tumor tissue in the residual 34 patients did not contain any of these 5 somatic candidate mutations.

Clinical and biochemical metabolic phenotyping. Baseline anthropometric assessment in the patients with primary aldosteronism included height, body mass index (kg/m^2), and standardized blood pressure measurement using an automatic sphygmomanometer validated for clinical use (according to list on www.dableducational.org). For blood pressure, the mean of 3 measurements separated by 5 minutes was determined and used for calculations.

Blood samples were drawn for fasting plasma glucose and insulin, hemoglobin A_{1c} (HbA_{1c}), total cholesterol, high-density lipoprotein, and triglycerides. Most participants ($n = 107$) also underwent a 75-g oral glucose tolerance test with blood sampling at 30-minute intervals for 2 hours. Subjects were categorized as having normal glucose tolerance on the basis of 2-hour glucose values (normal glucose tolerance < 140 mg/dl [< 7.8 mmol/l], impaired glucose tolerance ≥ 140 mg/dl [≥ 7.8 mmol/l]). HOMA-IR was calculated using the following formula: $[\text{fasting glucose (mmol/l)} \times \text{fasting insulin (mIU/l)}] / 22.5$.

Urine steroid metabolome analysis. All patients collected a 24-hour urine at the time of diagnosis of primary aldosteronism for analysis by quantitative gas chromatography-mass spectrometry (GC-MS) in selected-ion-monitoring (SIM) analysis mode, as described previously (45). For urinary steroid metabolite excretion analysis by quantitative GC-MS in SIM analysis mode, urinary steroids were enzymatically released from conjugation, with subsequent recovery of the hydrolyzed steroids by C18 solid-phase extraction (SPE) using Sep-Pak columns (Waters), followed by chemical derivatization prior to GC-MS-SIM analysis. A subcohort of 46 patients also collected 24-hour urine 6 to 12 months after unilateral adrenalectomy.

Our method allows for identification and quantification of 32 different steroid metabolites derived from mineralocorticoids, glucocorticoids, androgens, and their precursors; details are summarized in Supplemental Table 2. $3\alpha,5\beta$ -Tetrahydroaldosterone (THAldo) represents the major mineralocorticoid metabolite. Total glucocorticoid production was assessed as the sum of quantified metabolites of cortisol and cortisone, comprising tetrahydrocortisol (THF), 5α -tetrahydrocortisol (5α -THF), tetrahydrocortisone, α - and β -cortolone, α - and β -hydroxycortisol, and urinary cortisol and cortisone.

Hormonal assessments. We used validated and established liquid chromatography-tandem MS assays to measure serum cortisol (51), serum dexamethasone (52), and salivary cortisol (53). Cosyntropin test results were compared to those obtained in 82 healthy controls measured with the same assay; the diagnostic cutoff for diagnosis of adrenal insufficiency was defined as the 5th centile of the healthy control cohort and determined as 15.6 $\mu\text{g}/\text{dl}$ (430 nmol/l). Plasma ACTH was measured in EDTA plasma samples using a commercially available, automated chemiluminescence immunoassay (Liaison, Diasorin).

Serum dexamethasone concentrations greater than 2.2 $\mu\text{g}/\text{dl}$ (> 5.6 nmol/l) were considered indicative of a valid overnight dexamethasone suppression test. Salivary cortisol assay reference ranges were 0.2–1.7 $\mu\text{g}/\text{dl}$ (5–46 nmol/l) in the morning and less than 0.1 $\mu\text{g}/\text{dl}$ (< 2.6 nmol/l) in the evening. Plasma ACTH was measured in EDTA plasma samples using the Liaison chemiluminescence immunoassay. The assay employs 2 monoclonal antibodies directed against the N- and C-terminal end. Cross-reactivity with ACTH precursors and fragments is negligible. In our hands, the limit of quantification is 4 pg/ml with a reportable range from 4 to 1,500 pg/ml. Intra-assay coefficients of variability (CVs) ranged from 1.2% to 15.0% at concentrations of 355 and 5.8 pg/ml, while interassay CVs were 7.3% at 195 pg/ml and 12.7% at 14 pg/ml.

Tissue microarrays, immunohistochemistry, and digital image analysis. Tissue microarrays were constructed by sampling 3 tumor tissue cores (1.0 mm in diameter) as previously described (54). Paraffin-embedded tissue blocks from 57 of the aldosterone-producing adenomas were utilized, which were selected on the basis of representative H&E-stained tissue sections of each case by the same pathologist (AW).

The technical construction of the tissue microarrays was performed on a manual tissue arrayer (AlphaMetrix Biotech). A semi-automated rotation microtome (Microm HM 355S, Thermo Fisher

Scientific) was used to cut 3- μ m tissue microarray sections that were transferred to glass slides for immunohistochemistry and H&E staining.

Immunohistochemical staining was performed under standardized conditions on a Discovery XT automated stainer (Roche Diagnostics/Ventana Medical Systems) employing monoclonal antibodies directed against human CYP11B1 and CYP11B2 (55), provided by Celso Gomez-Sanchez, University of Mississippi Medical Center, Jackson, Mississippi, USA. The slides were incubated with primary antibodies (rat monoclonal anti-hCYP11B1 [1:20], clone 80-2-2 or mouse monoclonal anti-hCYP11B2 [1:100], clone 41-17B in Dako REAL antibody dilution, catalog S2022), and detected by the Discovery DAB Map Kit (Roche Diagnostics/Ventana Medical Systems), including incubation with respective secondary antibodies (anti-rat, Vector, catalog BA 4001 [1:300]; anti-mouse, ready-to-use universal secondary antibody, Roche Diagnostics/Ventana Medical Systems, catalog 760-4205).

Following immunohistochemistry, stained tissue microarray slides were scanned at $\times 20$ objective magnification using a digital Mirax Desk slide scanner (Zeiss Microimaging) prior to import into the image analysis software Definiens Developer XD2 (Definiens AG), as previously described (56). Tumor areas were annotated manually and a rule set was defined to detect and quantify staining intensities in the annotated tumor area, with operators blinded with regard to corresponding *in vivo* steroid output.

Statistics. Summary statistics, comprising mean (standard deviation) and median [interquartile range] (dependent on the presence of outliers), and heatmap visualization, were used to describe the clinical characteristics and the steroid metabolome of the patients included in this study. Initial analysis was undertaken using Mann-Whitney *U* tests comparing patients with primary aldosteronism and healthy controls; patients with unilateral adrenal adenoma and bilateral adrenal hyperplasia; and patients with primary aldosteronism, endocrine inactive adrenal adenoma, subclinical adrenal Cushing's (SC1 and SC2) and overt adrenal Cushing's, with healthy controls.

Further analysis used linear regression models to adjust for age and sex in comparisons between all 6 groups, and additionally adjust for body mass index in comparisons of primary aldosteronism and healthy controls, using log-transformed outcome data to reduce the impact of high outliers. Estimates from the regression model are presented with 95% confidence intervals and interpreted as approximate percentage differences (57). For the primary aldosteronism patients and the control subjects, separately, the association between patient characteristics and both tetrahydroaldosterone and total glucocorticoid metabolites adjusted for age, sex, and body mass index differences was assessed by fitting linear regression models. Log-transformed outcome data were used to reduce the impact of high outliers, and estimates interpreted as approximate percentage changes per unit change in the characteristic (57).

Comparisons of steroid excretion before and after unilateral adrenalectomy were made using Wilcoxon's signed-rank test. Linear models were also fitted comparing preoperative and postoperative log transformed steroid-metabolite measures to controls, adjusting for age and sex. For the 57 patients with aldosterone-producing adenoma immunohistochemistry data, analyses were performed to assess the association between total glucocorticoid metabolites, 11 β -hydroxyandosterone and tetrahydroaldosterone, and the level from image analysis. Again, linear regression with log-transformed outcome data was used and estimates can be interpreted as approximate percentage changes.

All tests were 2-sided and a stringent *P* value ($P \leq 0.01$) was considered as indicative of statistical significance given the exploratory nature and number of comparisons made in the analysis. The software packages R, Stata version 13, and MATLAB were used for analysis.

Study approval. Patients and controls were recruited at 5 centers participating in the European Network for the Study of Adrenal Tumors. All participants provided written informed consent, and the study procedures were approved by the ethics committee at each participating institution.

Author contributions

WA, FB, and MR designed research. WA, KL, AR, EA, ASD, IB, VC, SH, MQ, TD, JD, JWT, ZKHS, DAR, FB, and MR collected samples and clinical data from patient and control cohorts. WA, KL, LCG, BAH, DMO, CHLS, CA, M. Bidlingmaier, and BGK performed biochemical analysis. YR, AF, PL, FB, and AKW performed immunostaining analysis. WA, KL, AJS, IB, M. Biehl, AKW, FB, and MR undertook data analysis. AJS, KL, and WA performed statistical analysis of results, with JJD providing statistical oversight. WA drafted the manuscript and all authors contributed to writing the manuscript and approved the version to be published.

Acknowledgments

This work has been supported by the Medical Research Council UK (Strategic Biomarker Grant G0801473, to W.A.), the Else Kröner-Fresenius Stiftung (German Conn's Registry-Else-Kröner Hyperaldosteronism Registry; 2013_A182, to M.R.), the Deutsche Forschungsgemeinschaft (RE 752/20–1, to M.R., and BE2177/13-1, to F.B.), the Wellcome Trust (Clinical Research Training Fellowship 101671, to V.C.), the Mayo Clinic Foundation for Medical Education and Research (Traveling Scholarship, to I.B.), the Netherlands Organisation for Health Research and Development (E&K 171002102, to J.D.), the European Research Council (grant number 694913 [PAPA] to M.R.), and the European Commission Horizon 2020 Program under grant agreement 633983 (ENSAT-HT, to W.A., M.R., and F.B.).

Address correspondence to: Wiebke Arlt, Institute of Metabolism and Systems Research, University of Birmingham, Medical School IBR Tower, Room 236, Birmingham, B15 2TT, United Kingdom. E-mail w.arlt@bham.ac.uk.

- Funder JW, et al. The management of primary aldosteronism: Case detection, diagnosis, and treatment: an Endocrine Society Clinical Practice Guideline. *J Clin Endocrinol Metab.* 2016;101(5):1889–1916.
- Hannemann A, et al. Screening for primary aldosteronism in hypertensive subjects: results from two German epidemiological studies. *Eur J Endocrinol.* 2012;167(1):7–15.
- Hannemann A, Wallaschofski H. Prevalence of primary aldosteronism in patient's cohorts and in population-based studies—a review of the current literature. *Horm Metab Res.* 2012;44(3):157–162.
- Rossi GP, et al. A prospective study of the prevalence of primary aldosteronism in 1,125 hypertensive patients. *J Am Coll Cardiol.* 2006;48(11):2293–2300.
- Choi M, et al. K⁺ channel mutations in adrenal aldosterone-producing adenomas and hereditary hypertension. *Science.* 2011;331(6018):768–772.
- Beuschlein F, et al. Somatic mutations in ATP1A1 and ATP2B3 lead to aldosterone-producing adenomas and secondary hypertension. *Nat Genet.* 2013;45(4):444e1.
- Scholl UI, et al. Somatic and germline CACNA1D calcium channel mutations in aldosterone-producing adenomas and primary aldosteronism. *Nat Genet.* 2013;45(9):1050–1054.
- Azizan EA, et al. Somatic mutations in ATP1A1 and CACNA1D underlie a common subtype of adrenal hypertension. *Nat Genet.* 2013;45(9):1055–1060.
- Teo AE, et al. Pregnancy, primary aldosteronism, and adrenal CTNNB1 mutations. *N Engl J Med.* 2015;373(15):1429–1436.
- SPRINT Research Group, et al. A randomized trial of intensive versus standard blood-pressure control. *N Engl J Med.* 2015;373(22):2103–2116.
- Milliez P, Girerd X, Plouin PF, Blacher J, Safar ME, Mourad JJ. Evidence for an increased rate of cardiovascular events in patients with primary aldosteronism. *J Am Coll Cardiol.* 2005;45(8):1243–1248.
- Catena C, et al. Cardiovascular outcomes in patients with primary aldosteronism after treatment. *Arch Intern Med.* 2008;168(1):80–85.
- Born-Frontsberg E, et al. Cardiovascular and cerebrovascular comorbidities of hypokalemic and normokalemic primary aldosteronism: results of the German Conn's Registry. *J Clin Endocrinol Metab.* 2009;94(4):1125–1130.
- Rossi GP, et al. Long-term control of arterial hypertension and regression of left ventricular hypertrophy with treatment of primary aldosteronism. *Hypertension.* 2013;62(1):62–69.
- Reincke M, et al. Observational study mortality in treated primary aldosteronism: the German Conn's registry. *Hypertension.* 2012;60(3):618–624.
- Fallo F, et al. Prevalence and characteristics of the metabolic syndrome in primary aldosteronism. *J Clin Endocrinol Metab.* 2006;91(2):454–459.
- Reincke M, et al. Is primary aldosteronism associated with diabetes mellitus? Results of the German Conn's registry. *Horm Metab Res.* 2010;42(6):435–439.
- Fallo F, Pilon C, Urbanet R. Primary aldosteronism and metabolic syndrome. *Horm Metab Res.* 2012;44(3):208–214.
- Fischer E, et al. Aldosterone excess impairs first phase insulin secretion in primary aldosteronism. *J Clin Endocrinol Metab.* 2013;98(6):2513–2520.
- Hanslik G, et al. Increased prevalence of diabetes mellitus and the metabolic syndrome in patients with primary aldosteronism of the German Conn's Registry. *Eur J Endocrinol.* 2015;173(5):665–675.
- Salcuni AS, et al. Bone involvement in aldosteronism. *J Bone Miner Res.* 2012;27(10):2217–2222.
- Sonino N, et al. Psychological assessment of primary aldosteronism: a controlled study. *J Clin Endocrinol Metab.* 2011;96(6):E878–E883.
- Apostolopoulou K, et al. Gender differences in anxiety and depressive symptoms in patients with primary hyperaldosteronism: a cross-sectional study. *World J Biol Psychiatry.* 2014;15(1):26–35.
- Di Dalmazi G, et al. Cardiovascular events and mortality in patients with adrenal incidentalomas that are either non-secreting or associated with intermediate phenotype or subclinical Cushing's syndrome: a 15-year retrospective study. *Lancet Diabetes Endocrinol.* 2014;2(5):396–405.
- Debono M, Bradburn M, Bull M, Harrison B, Ross RJ, Newell-Price J. Cortisol as a marker for increased mortality in patients with incidental adrenocortical adenomas. *J Clin Endocrinol Metab.* 2014;99(12):4462–4470.
- Di Dalmazi G, Pasquali R, Beuschlein F, Reincke M. Subclinical hypercortisolism: a state, a syndrome, or a disease? *Eur J*

- Endocrinol.* 2015;173(4):M61–M71.
27. Di Dalmazi G, Berr CM, Fassnacht M, Beuschlein F, Reincke M. Adrenal function after adrenalectomy for subclinical hypercortisolism and Cushing's syndrome: a systematic review of the literature. *J Clin Endocrinol Metab.* 2014;99(8):2637–2645.
 28. Nomura K, Naruse M, Naruse K, Demura H, Shizume K. In vivo evidence of cortisol secretion by aldosterone-producing adenomas. *Acta Endocrinol.* 1984;106(4):516–520.
 29. Tunny TJ, Klemm SA, Gordon RD. Some aldosterone-producing adrenal tumours also secrete cortisol, but present clinically as primary aldosteronism. *Clin Exp Pharmacol Physiol.* 1990;17(3):167–171.
 30. Späth M, Korovkin S, Antke C, Anlauf M, Willenberg HS. Aldosterone- and cortisol-co-secreting adrenal tumors: the lost subtype of primary aldosteronism. *Eur J Endocrinol.* 2011;164(4):447–455.
 31. Vicennati V, et al. Combined aldosterone and cortisol secretion by adrenal incidentaloma. *Int J Surg Pathol.* 2012;20(3):316–319.
 32. Yoon V, et al. Benign adrenal adenomas secreting excess mineralocorticoids and glucocorticoids. *Endocrinol Diabetes Metab Case Rep.* 2013;2013:130042.
 33. Fallo F, et al. Concurrent primary aldosteronism and subclinical cortisol hypersecretion: a prospective study. *J Hypertens.* 2011;29(9):1773–1777.
 34. Hiraishi K, et al. Clinicopathological features of primary aldosteronism associated with subclinical Cushing's syndrome. *Endocr J.* 2011;58(7):543–551.
 35. Tong A, et al. A novel phenotype of familial hyperaldosteronism type III: concurrence of aldosteronism and Cushing's syndrome. *J Clin Endocrinol Metab.* 2016;101(11):4290–4297.
 36. Petramala L, et al. Bone and mineral metabolism in patients with primary aldosteronism. *Int J Endocrinol.* 2014;2014:836529.
 37. Wu VC, et al. Risk of fracture in primary aldosteronism: a population-based cohort study [published online ahead of print November 10, 2016]. *J Bone Min Res.* <https://doi.org/10.1002/jbmr.3033>.
 38. Rege J, et al. Liquid chromatography-tandem mass spectrometry analysis of human adrenal vein 19-carbon steroids before and after ACTH stimulation. *J Clin Endocrinol Metab.* 2013;98(3):1182–1188.
 39. Storbeck KH, Bloem LM, Africander D, Schloms L, Swart P, Swart AC. 11 β -Hydroxydihydrotestosterone and 11-ketodihydrotestosterone, novel C19 steroids with androgenic activity: a putative role in castration resistant prostate cancer? *Mol Cell Endocrinol.* 2013;377(1–2):135–146.
 40. O'Reilly MW, et al. 11-Oxygenated C19 steroids are the predominant androgens in polycystic ovary syndrome. *J Clin Endocrinol Metab.* 2017;102(3): 840–848.
 41. Dekkers T, et al. Adrenal vein sampling versus CT scan to determine treatment in primary aldosteronism: an outcome-based randomised diagnostic trial. *Lancet Diabetes Endocrinol.* 2016;4(9):739–746.
 42. Stratakis CA, et al. Paradoxical response to dexamethasone in the diagnosis of primary pigmented nodular adrenocortical disease. *Ann Intern Med.* 1999;131(8):585–591.
 43. Burn F, et al. Left-sided living kidney donation leads to transiently reduced adrenocortical responsiveness [published online ahead of print December 26, 2016]. *Am J Transplant.* <https://doi.org/10.1111/ajt.14184>.
 44. Krone N, Hughes BA, Lavery GG, Stewart PM, Arlt W, Shackleton CH. Gas chromatography/mass spectrometry (GC/MS) remains a pre-eminent discovery tool in clinical steroid investigations even in the era of fast liquid chromatography tandem mass spectrometry (LC/MS/MS). *J Steroid Biochem Mol Biol.* 2010;121(3–5):496–504.
 45. Arlt W, et al. Urine steroid metabolomics as a biomarker tool for detecting malignancy in adrenal tumors. *J Clin Endocrinol Metab.* 2011;96(12):3775–3784.
 46. Eisenhofer G, et al. Mass spectrometry-based adrenal and peripheral venous steroid profiling for subtyping primary aldosteronism. *Clin Chem.* 2016;62(3):514–524.
 47. Williams TA, et al. Genotype-specific steroid profiles associated with aldosterone-producing adenomas. *Hypertension.* 2016;67(1):139–145.
 48. Fassnacht M, et al. Management of adrenal incidentalomas: European Society of Endocrinology Clinical Practice Guideline in collaboration with the European Network for the Study of Adrenal Tumors. *Eur J Endocrinol.* 2016;175(2):G1–G34.
 49. Fernandes-Rosa FL, et al. Genetic spectrum and clinical correlates of somatic mutations in aldosterone-producing adenoma. *Hypertension.* 2014;64(2):354–361.
 50. Rhayem Y, et al. PRKACA somatic mutations are rare findings in aldosterone-producing adenomas. *J Clin Endocrinol Metab.* 2016;101(8):3010–3017.
 51. Owen LJ, et al. Development of a rapid assay for the analysis of serum cortisol and its implementation into a routine service laboratory. *Ann Clin Biochem.* 2013;50(Pt 4):345–352.
 52. Hempen C, Elfering S, Mulder AH, van den Bergh FA, Maatman RG. Dexamethasone suppression test: development of a method for simultaneous determination of cortisol and dexamethasone in human plasma by liquid chromatography/tandem mass spectrometry. *Ann Clin Biochem.* 2012;49(Pt 2):170–176.
 53. Jones RL, Owen LJ, Adaway JE, Keevil BG. Simultaneous analysis of cortisol and cortisone in saliva using XLC-MS/MS for fully automated online solid phase extraction. *J Chromatogr B Analyt Technol Biomed Life Sci.* 2012;881–882:42–48.
 54. Rauser S, et al. Significance of HER2 low-level copy gain in Barrett's cancer: implications for fluorescence in situ hybridization testing in tissues. *Clin Cancer Res.* 2007;13(17):5115–5123.
 55. Gomez-Sanchez CE, et al. Development of monoclonal antibodies against human CYP11B1 and CYP11B2. *Mol Cell Endocrinol.* 2014;383(1–2):111–117.
 56. Feuchtinger A, et al. Image analysis of immunohistochemistry is superior to visual scoring as shown for patient outcome of esophageal adenocarcinoma. *Histochem Cell Biol.* 2015;143(1):1–9.
 57. Cole TJ. Sympercents: symmetric percentage differences on the 100 log(e) scale simplify the presentation of log transformed data. *Stat Med.* 2000;19(22):3109–3125.