

CORRECTION

Open Access

# Correction to: P66Shc expression in diabetic rat retina



Ming-Hui Zhao<sup>1,2</sup>, Jianyan Hu<sup>2</sup>, Shufeng Li<sup>2</sup>, Qiang Wu<sup>2</sup> and Peirong Lu<sup>1\*</sup>

**Correction to:** *BMC Ophthalmol.* 2018;18(1):58  
<https://doi.org/10.1186/s12886-018-0724-3>

Following publication of the original article [1], the authors notified us of an error in Fig. 3. In this correction article, D12w (control) was updated.

#### Author details

<sup>1</sup>Department of Ophthalmology, The First Affiliated Hospital of Soochow University, Suzhou 215006, China. <sup>2</sup>Department of Ophthalmology, Shanghai Jiaotong University Affiliated Sixth People's Hospital, Shanghai 200233, China.

Received: 25 February 2019 Accepted: 25 February 2019

Published online: 01 March 2019

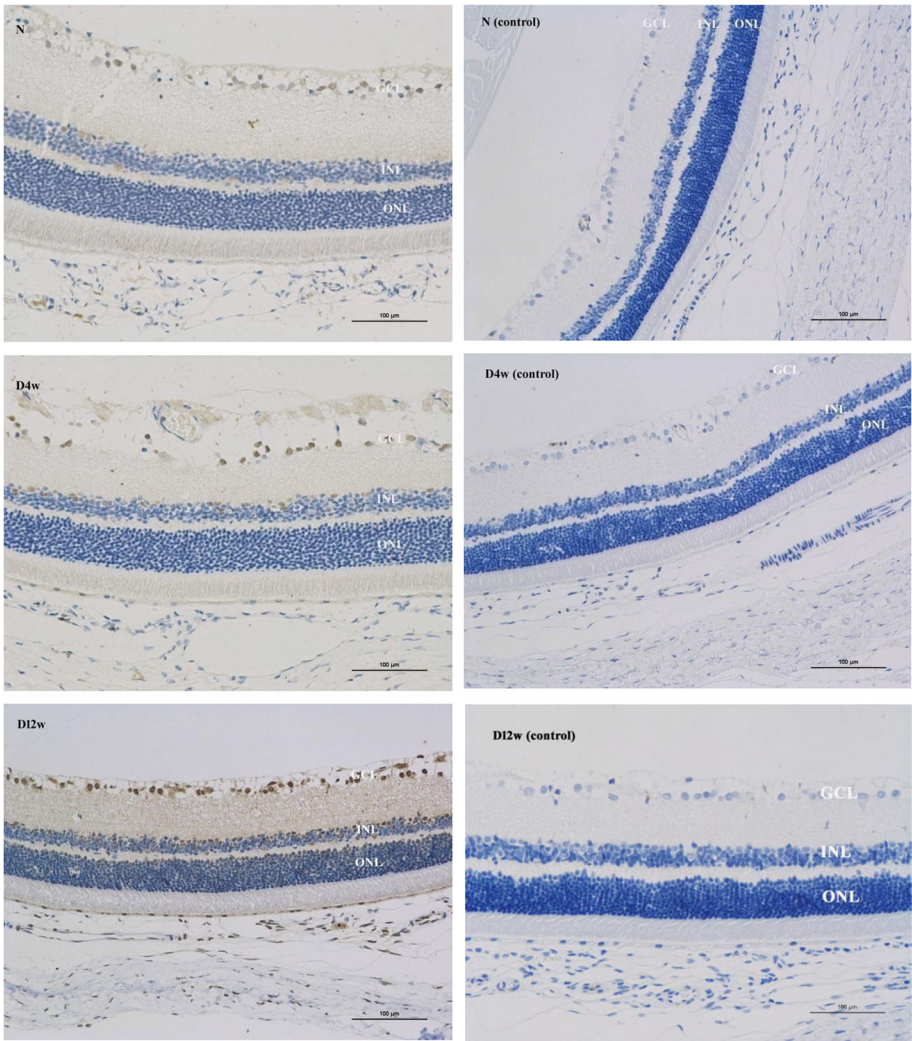
#### Reference

1. Zhao et al. (2018) P66Shc expression in diabetic rat retina (2018) 20:16 DOI: <https://doi.org/10.1186/s12886-018-0724-3>

\* Correspondence: [lupeirongsz@126.com](mailto:lupeirongsz@126.com)

<sup>1</sup>Department of Ophthalmology, The First Affiliated Hospital of Soochow University, Suzhou 215006, China





**Fig. 3** Immunohistochemical staining of frozen sections. P66Shc was expressed in the retina of normal rats and of rats with diabetes mellitus (DM). Greater p66Shc expression was found in the DM group compared to the control group. The expression increased with the progress of DM. (N: control group, D4w: 4 weeks after diabetes onset, D12w: 12 weeks after diabetes onset, control: the samples without primary antibody added)