

MEETING ABSTRACT

Open Access

Incorporation of MRI-AIF information for improved kinetic modelling of dynamic PET data

Hasan Sari^{1*}, Kjell Erlandsson¹, Kris Thielemans¹, David Atkinson², Simon Arridge³, Sebastien Ourselin³, Brian Hutton¹

From PSMR14: 3rd Conference in PET/MR and SPECT/MR
Kos Island, Greece. 19-21 May 2014

¹Institute of Nuclear Medicine,
University College London,
London, UK

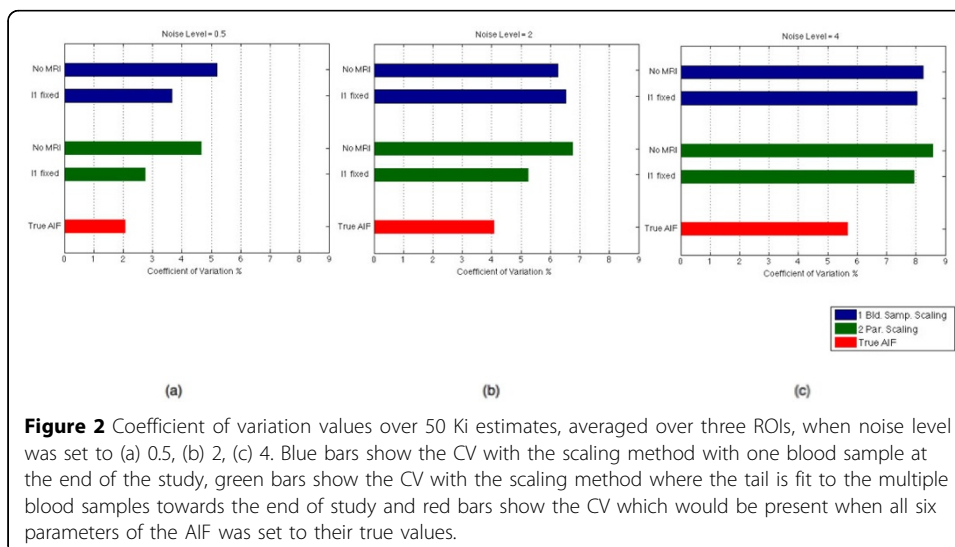
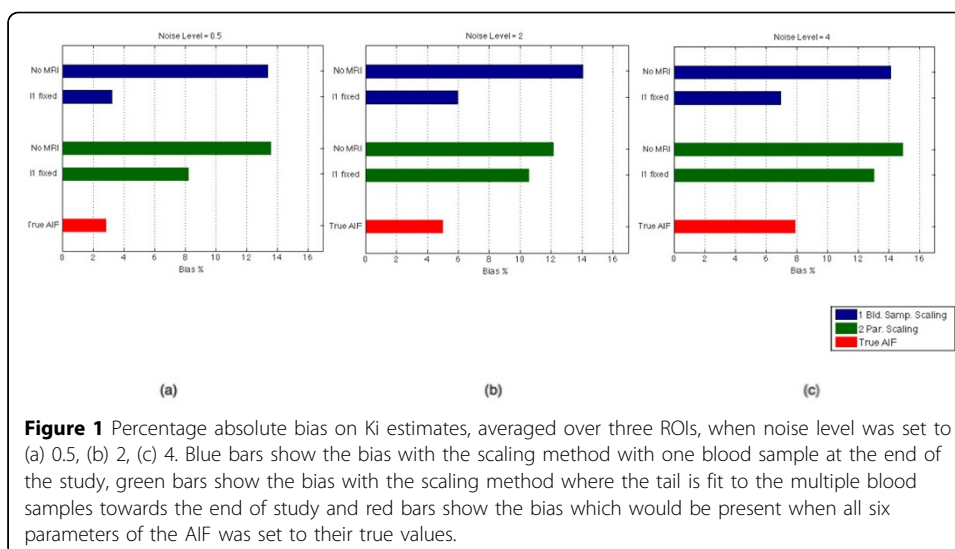
Pharmacokinetic analysis of dynamic PET data requires estimation of the arterial input function (AIF). An alternative method to collecting blood samples during scanning is the simultaneous estimation approach in which AIF and kinetic parameters are estimated at once [1]. We have investigated how information from a simultaneous MRI-AIF can be incorporated into this model and evaluated its effect on estimated kinetic parameters by comparing absolute bias and coefficient of variation (CV) values on influx constants (K_i). As the delivery of the tracer or contrast agent is dominated by vascular flow dynamics, PET-AIF and MRI-AIF boluses will have similar peak shapes if the same injection speed is used [2,3]. Hence it can be assumed that the values of λ_1 of eq. 1 [1] can be fixed to reduce the number of parameters in fitting. Simulated data was generated using two tissue compartment model with rate constants from a clinical brain study [5]. Noise was added using eq. 2 where α set to 0.5, 2 and 4. AIF scaling was done using one blood sample obtained at the end of the study, or by fixing A_3 and λ_3 to their true values assuming they can be determined using multiple blood samples.

$$C_p(t) = (A_1t - A_2 - A_3)e^{-\lambda_1} + A_2e^{-\lambda_2} + A_3e^{-\lambda_3} \quad (1)$$

$$\sigma = \sqrt{\frac{a^2 \cdot d}{\Delta t}} \quad (2)$$

As shown in Figure 1 and 2, when λ_1 is fixed, larger improvements (from 13.84% to 5.38%, averaged on all noise levels) were seen on the bias of estimates with one blood sample compared to the method with multiple samples (from 13.54% to 10.60%). For CV, improvement was slightly higher on scaling with multiple samples when λ_1 was fixed.

We have shown that information from simultaneous MRI-AIF can reduce the bias on K_i estimates and multiple blood samples might not be necessary, as the scaling method with one blood sample performed better when a parameter reflecting the early part of the MRI-AIF is included.



Acknowledgements

This work was supported by an IMPACT studentship funded jointly by Siemens and the UCL Faculty of Engineering Sciences. KE receives funding from EPSRC (EP/K005278/1). UCL/UCLH research is supported by the NIHR Biomedical Research Centres funding scheme.

Authors' details

¹Institute of Nuclear Medicine, University College London, London, UK. ²Center for Medical Imaging, University College London, London, UK. ³Center for Medical Image Computing, University College London, London, UK.

Published: 29 July 2014

References

- Feng D, Wong KP, Wu CM, Siu WC: A technique for extracting physiological parameters and the required input function simultaneously from PET image measurements: theory and simulation study. *IEEE Trans. Inf. Technol. Biomed.* 1997, **1**(4):243-54.
- Poulin E, Lebel R, Croteau E, Blanchette M, Tremblay L, Lecomte R, Bentourkia M, Lepage M: Conversion of arterial input functions for dual pharmacokinetic modeling using Gd-D TPA/MRI and 18F-FDG/PET. *Magn. Reson. Med.* 2013, **69**:781-92.
- Ibaraki IKM, Shimosegawa E, Toyoshima H, Ishigame K, Sugawara S, Takahashi K, Miura S: Evaluation of arterial input function for Perfusion MRI: comparison with that of PET study. *Proc. Intl. Soc. Mag. Reson. Med.* 2005, **13**:1125.
- Muzic RF, Cornelius S: COMKAT: compartment model kinetic analysis tool. *J. Nucl. Med.* 2001, **42**(4):636-45.

5. Hawkins RA, M E, Phelps ME, Huang SC: Effects of temporal sampling, glucose metabolic rates, and disruptions of the blood-brain barrier on the FDG model with and without a vascular compartment: studies in human brain tumors with PET. *J. Cereb. Blood Flow Metab.* 1986, **6**(2):170-83.

doi:10.1186/2197-7364-1-S1-A43

Cite this article as: Sari et al.: Incorporation of MRI-AIF information for improved kinetic modelling of dynamic PET data. *EJNMMI Physics* 2014 **1**(Suppl 1):A43.

Submit your manuscript to a SpringerOpen[®] journal and benefit from:

- ▶ Convenient online submission
- ▶ Rigorous peer review
- ▶ Immediate publication on acceptance
- ▶ Open access: articles freely available online
- ▶ High visibility within the field
- ▶ Retaining the copyright to your article

Submit your next manuscript at ▶ springeropen.com
