

# Increased risk of hospitalization for ultrarapid metabolizers of cytochrome P450 2D6

Paul Y Takahashi<sup>1</sup>  
Euijung Ryu<sup>2</sup>  
Jyotishman Pathak<sup>2</sup>  
Gregory D Jenkins<sup>2</sup>  
Anthony Batzler<sup>2</sup>  
Matthew A Hathcock<sup>2</sup>  
John Logan Black<sup>3</sup>  
Janet E Olson<sup>2</sup>  
James R Cerhan<sup>2</sup>  
Suzette J Bielinski<sup>2</sup>

<sup>1</sup>Division of Primary Care Internal Medicine, Department of Medicine,

<sup>2</sup>Department of Health Sciences Research, <sup>3</sup>Division of Clinical Biochemistry and Immunology, Department of Laboratory Medicine and Pathology, Mayo Clinic, Rochester, MN, USA

Correspondence: Paul Y Takahashi  
Division of Primary Care Internal Medicine, Mayo Clinic, 200 First St SW, Rochester, MN 55905, USA  
Tel +1 507 284 4646  
Fax +1 507 266 0036  
Email takahashi.paul@mayo.edu

**Background:** Cytochrome P450 2D6 (*CYP2D6*) is responsible for the metabolism of clinically used drugs and other environmental exposures, but it is unclear whether the *CYP2D6* phenotype is associated with adverse health outcomes. The aim was to determine the association of *CYP2D6* phenotype with the risk of hospitalization or an emergency department (ED) visit among a group of primary care patients.

**Methods:** In this study, 929 adult patients underwent *CYP2D6* testing. The primary outcome was risk of hospitalization or an ED visit from January 2005 through September 2014. *CYP2D6* genotypes were interpreted as 1 of 7 clinical phenotypes, from ultrarapid to poor metabolizer, and patients with the extensive metabolizer phenotype were used as the reference group. The hazard ratios (HRs) and 95% confidence intervals (CIs) were estimated for finding the association of *CYP2D6* phenotypes with the risk of hospitalization or an ED visit by using Cox proportional hazard models and adjusting for age and sex.

**Results:** The median age was 49 years (interquartile range, 46–52 years); 74% of patients had 3 or fewer chronic conditions, 285 had at least 1 hospitalization, and 496 had at least 1 ED visit. The risk of hospitalization was higher among patients who were ultrarapid metabolizers compared to extensive metabolizers (47% vs 30%; HR, 1.69; 95% CI, 1.11–2.57), as was the risk of an ED visit (62% vs 49%; HR, 1.50; 95% CI, 1.05–2.14). For poor metabolizers compared to extensive metabolizers, there was no difference in the risk of hospitalization (HR, 0.95; 95% CI, 0.58–1.56), but there was an increase in the risk of an ED visit (HR, 1.38; 95% CI, 0.96–1.98) (the difference was not statistically significant).

**Conclusion:** We found an increased risk of hospitalization or an ED visit among ultrarapid compared to extensive *CYP2D6* metabolizers. Further research identifying the mechanisms of the association and ultimate clinical utility is warranted.

**Keywords:** cohort study, pharmacogenomics, emergency department, hospitalization

## Introduction

Genomic variation within the genes controlling drug metabolism has been associated with toxicity, adverse drug reactions, and ineffective drug dosing. Furthermore, medication reactions and suboptimal therapy are the common causes of hospitalization and morbidity. For example, in a study of 106 hospitalized patients, a severe drug reaction occurred in 24% of patients.<sup>1</sup> Cytochrome P450 2D6 (*CYP2D6*) is of particular importance because of the number and types of medications affected.<sup>2</sup> In addition, there is a paucity of data on the adverse health outcomes of ultrarapid or poor metabolism of *CYP2D6*. In a study of 149 patients admitted for major depressive disorder, poor

metabolizers of *CYP2D6* were hospitalized longer than normal or ultrarapid metabolizers.<sup>3</sup> Likewise, in a smaller study of 53 patients with depression or schizophrenia, length of stay (LOS) was longer for patients with poor metabolism than for patients with other *CYP2D6* phenotypes.<sup>4</sup> Furthermore, pharmacogenomic testing of *CYP2D6* for risperidone was found to be cost-effective in reducing LOS.<sup>5</sup> In case studies of children who were ultrarapid *CYP2D6* metabolizers, the children had an increased risk of death.<sup>6</sup> These case studies have led to increased warnings for codeine use with both children and breastfeeding mothers.<sup>7</sup>

Precision medicine within pharmacogenomics can be used to predict adverse health outcomes such as hospitalization. In a broad population with multiple reasons for hospitalization, the potential impact of poor or ultrarapid *CYP2D6* metabolism on hospitalization and emergency department (ED) visits is not known. There are many plausible reasons to believe that *CYP2D6* metabolism activity may indeed affect hospitalization and ED visits. For example, many commonly prescribed medications, including pain medications such as codeine and tramadol, are prodrugs activated by *CYP2D6*, and several antidepressants and antipsychotics are inactivated by *CYP2D6*.<sup>8</sup> In addition, tamoxifen, a common chemotherapeutic medication for breast cancer, is metabolized through *CYP2D6* to an active moiety (endoxifen), and poor metabolizers are at an increased risk for breast cancer recurrence.<sup>9</sup>

The goal of the study was to determine the relationship between *CYP2D6* phenotype and the risk of hospitalization or an ED visit. It was hypothesized that participants with extreme metabolism phenotypes (either poor or ultrarapid metabolism), compared to extensive phenotypes, would have higher rates of hospitalization or ED visits or both.

## Methods

### Patients and setting

This study was conducted with data from the Mayo Clinic Biobank (MCB). Specifically, the MCB enrolled over 27,000 patients and collected clinical, questionnaire, and biospecimens data from April 2009 through September 2012.<sup>10</sup> Within the MCB, 1,013 patients were recruited for the Right Drug, Right Dose, Right Time: Using Genomic Data to Individualize Treatment (RIGHT) protocol, which sequenced 86 pharmacogenomics genes for clinical use. The protocol details have been previously reported.<sup>11</sup> Of these patients, 84 were excluded from this study because they did not receive continuous primary care at Mayo Clinic. The 929 adult patients included in the study provided consent to the MCB for use of their data<sup>10</sup> and afforded further written informed consent upon enrollment in the RIGHT protocol.<sup>11</sup>

The RIGHT protocol was reviewed and approved by the Mayo Clinic Institutional Review Board and the Mayo Clinic Biobank Access committee.

Demographic data, including patient age and sex, were obtained from the electronic health record (EHR). Disease burden of the patients was assessed with the use of Minnesota medical tiering assessment.<sup>12</sup> In brief, Minnesota Health Care Home Tiering was calculated on December 31, 2010, for each patient with data from the EHR. Each outpatient or inpatient visit yielded a diagnosis containing an “International Classification of Diseases, Ninth Revision” code, which was then used to calculate the tiering score, which was based on the Johns Hopkins Adjusted Clinical Groups.<sup>13</sup> The International Classification of Diseases, Ninth Revision codes were obtained up to 1 year in advance of tiering. Each code was then assigned to 1 of 22 major clusters for counting. Patients were tiered into 1 of 5 categories: low (no chronic conditions); basic (1–3 conditions); intermediate (4–6 conditions); extended (7–9 conditions); and complex ( $\geq 10$  conditions). Smoking status (current, former, or never smoker) and alcohol consumption data (never, once monthly or less, 2–4 times monthly, 2–5 times weekly, or  $\geq 6$  times weekly) were collected from the questionnaire completed at enrollment in the MCB.

### *CYP2D6* phenotype

*CYP2D6* genotyping was performed by using a cascade of testing as is required to obtain an accurate genotype. Genomic DNA was extracted from whole blood. Assays were performed with the xTAG *CYP2D6* Kit (Luminex Corp), which incorporates multiplex polymerase chain reaction (PCR) and multiplex allele-specific primer extension. This assay uses the Luminex proprietary universal tag sorting system on the Luminex 100 xMAP platform. When necessary, a copy number assay was also completed. This assay uses real-time PCR, which interrogates 3 locations on the *CYP2D6* gene and includes 1 copy number probe (FAM labeled) and 1 reference assay (VIC labeled) per reaction (Taqman Copy Number Assays Revision D, Thermo Fisher Scientific Inc.). More specifically, each copy number probe detects the genomic sequence of interest, and the reference assay serves to detect a sequence known to be present in 2 copies of a diploid genome. Relative quantitation is then used to determine the relative copy number of the target of interest in a genomic DNA sample that is normalized to 10 ng/ $\mu$ L for each probe. Each probe is normalized to the known copy number of the reference sequence and is also compared to a calibrator sample containing known copies of the target sequence included in each run.

Sequencing of *CYP2D6* was completed in selected samples as needed in order to derive the phenotype. The resulting *CYP2D6* gene was amplified by PCR. The PCR product was then purified and sequenced in both directions with fluorescent dye-terminator chemistry. Sequencing products were analyzed on an automated sequencer, and trace files were then analyzed for variations in the promoter, exons, and intron–exon boundaries for all 9 exons through use of mutation detection software and visual inspection.<sup>14,15</sup> Finally, according to allele functionality, 7 metabolic phenotypes were reported in the EHR: ultrarapid, extensive to ultrarapid, extensive, intermediate to extensive, intermediate, poor to intermediate, and poor. The phenotype algorithms were based on Clinical Pharmacogenetics Implementation Consortium guidelines.<sup>16</sup>

The *CYP2D6* genotype results were used to predict which of the 7 phenotypes was in a given sample according to the method described by Ji et al.<sup>16</sup> Different laboratories design different prediction methods. We used current findings and thinking to develop this model, and this is used in the Mayo Clinic Department of Laboratory Medicine and Pathology. Patients who did not have a detectable gene alteration were considered to be extensive drug metabolizers (*CYP2D6* \*1/\*1).<sup>16</sup>

## Medications

Prescribed medications were secondary risk factors of interest for an exploratory analysis. Medications were chosen according to potential adverse events or inadequate efficacy due to poor or ultrarapid metabolism of *CYP2D6*. We selected medications that were used by at least 5% of the 929 patients (ie,  $\geq 46$ ) according to the medication history in the EHR: oxycodone, codeine, hydrocodone, tramadol, morphine, metoprolol, and amitriptyline.

## Hospitalization and ED visits

Hospitalization and ED visits were determined from EHR billing codes for inpatient stays occurring from January 1, 2005 through September 30, 2014. Outpatient surgical interventions and colonoscopies, hospitalizations for research studies, and pregnancy-related hospitalizations were excluded.

## Statistical analysis

Patient demographic characteristics and *CYP2D6* metabolism phenotypes were summarized with use of descriptive statistics. *CYP2D6* phenotype groups were compared for demographic characteristics with use of the Pearson's chi-squared tests designed for categorical variables (sex and Minnesota tiers) and the Kruskal–Wallis test for continuous variables. Patients were followed through their EHR from the

date of their first clinic visit (occurring on or after January 1, 2005) until the first event of hospitalization (or an ED visit), death, or the end of the study period (September 30, 2014).

For evaluating the association of *CYP2D6* metabolizer activity with the risk of hospitalization or an ED visit, the Kaplan–Meier plots was used to visualize the relation between the metabolizer groups and outcomes. Next, Cox proportional hazard models was performed to estimate hazard ratios (HRs) and 95% confidence intervals (CIs), adjusting for both age and sex. Likelihood ratio tests with 6 degrees of freedom were applied to assess the overall significance of each of the 7 *CYP2D6* phenotypes for risk of hospitalization and ED visits.

To assess the effect of disease burden on the association, we conducted analyses stratified by Minnesota tiers (tier 2 or higher vs tier 0 or 1). For this analysis, *CYP2D6* metabolism phenotypes were collapsed into 3 categories (ultrarapid, poor, and the other 5 categories) for better statistical power. For each analysis (overall, lower comorbidity, and higher comorbidity), the overall significance of the 3 collapsed *CYP2D6* phenotype categories was tested with likelihood ratio tests with 2 degrees of freedom. Corresponding overall *P*-values and individual HRs for *CYP2D6* phenotypes were used for comparing the ultrarapid or poor category to the other 5 categories.

To indirectly assess the potential effect of medication use on the association of *CYP2D6* with hospitalization or an ED visit, we calculated the prevalence of 4 disease groups (depression, arthritis, coronary artery disease, and congestive heart failure) that are enriched for use of medications metabolized with *CYP2D6*. The prevalence of each disease as of January 1, 2005, based on an EHR search of the preceding 5 years, was calculated for each *CYP2D6* phenotype. In addition, we calculated the prevalence of common medication use.

All statistical analyses were performed with R statistical software (<https://www.r-project.org>).

## Results

### Patients

Of the 929 patients included in the study, the median age on January 1, 2005 was 49 years (interquartile range, 46–52 years), and 54% were females. At the extremes of the *CYP2D6* metabolism phenotype, 69 patients (7%) were poor metabolizers and 74 (8%) were ultrarapid metabolizers (Table 1). Minnesota medical tiering calculated at the month of MCB enrollment was available for 918 patients; 686 (75%) were tier 0 or 1 (ie, they had  $\leq 3$  comorbid health conditions). There were no notable associations of *CYP2D6* phenotype with age ( $P=0.46$ ) or sex ( $P=0.08$ ) (Table 1), but patients with the ultrarapid or extensive-to-ultrarapid metabolizer phenotype had a higher comorbidity score (Minnesota

**Table 1** Characteristics of patients by *CYP2D6* metabolizer phenotype

Feature	Overall cohort	Ultrarapid	Extensive to ultrarapid	Extensive	Intermediate to extensive	Intermediate	Poor to intermediate	Poor	P-value
<b>CYP2D6 phenotypes</b>									
<b>Patients, n (%)</b>	929 (100)	74 (8.0)	145 (16)	195 (21)	179 (19)	203 (22)	64 (6.9)	69 (7.4)	–
<b>Age, median (IQR), years</b>	49 (46–52)	49 (45–52)	48 (47–52)	48 (45–52)	49 (46–51)	49 (45–52)	49 (47–51)	50 (46–52)	0.46
<b>Female, %</b>	54	62	50	53	49	62	53	49	0.08
<b>Minnesota tier, %</b>									0.03
0	13	11	5.6	13	18	17	7.8	8.8	
1	62	53	65	64	56	63	73	65	
2	20	27	26	19	19	15	14	22	
3	4.9	6.8	2.8	4.7	6.2	5.0	4.7	4.4	
4	0.5	2.7	6.9	0	0.6	0.5	0	0	
<b>Disease,<sup>a</sup> %</b>									
Depression	7.0	9.4	8.9	5.8	6.1	6.9	2.7	10.5	0.44
Arthritis	5.7	10.6	5.7	4.8	5.1	6.5	5.4	2.6	0.45
Coronary artery disease	1.2	1.2	1.3	1.4	1.5	1.4	0	0	0.90
Congestive heart failure	0	0	0	0	0	0	0	0	–
<b>Smoking status,<sup>b</sup> %</b>									0.72
Current	3.6	5.9	2.6	3.9	2.1	3.3	5.4	5.3	
Former smoker	28.3	31.8	28.2	31.9	28.7	26.5	25.7	21.3	
Never	68.1	62.4	69.2	64.3	69.2	70.2	68.9	73.3	
<b>Alcohol consumption,<sup>b</sup> %</b>									0.28
Never	14.5	16.5	10.3	12.1	19.1	15.9	17.6	9.2	
Once monthly or less	22.3	22.4	19.9	24.2	20.1	21.5	32.4	19.7	
2–4 times monthly	27.7	24.7	32.7	29.5	25.8	26.2	21.6	31.6	
2–5 times weekly	27.5	30.6	23.7	28.0	28.4	29.4	20.3	30.3	
≥6 times weekly	8.0	5.9	13.5	6.3	6.7	7.0	8.1	9.2	
<b>Medication use,<sup>c</sup> %</b>									
Oxycodone	53.3	63.5	54.4	52.4	50.0	54.6	47.3	52.6	0.44
Codeine	38.9	43.5	34.2	39.9	38.3	38.9	48.6	32.9	0.37
Hydrocodone	35.9	45.9	39.2	34.1	33.7	32.9	32.4	40.8	0.30
Tramadol	26.4	28.2	27.2	23.1	24.0	30.6	23.0	28.9	0.60
Morphine	10.9	22.4	9.5	10.6	11.7	10.2	8.1	3.9	0.01
Metoprolol	10.5	11.8	13.3	11.1	8.2	9.7	9.5	10.5	0.82
Amitriptyline	6.2	9.4	10.1	3.4	3.6	7.4	5.4	6.6	0.07

**Notes:** <sup>a</sup>The proportion for each disease was calculated by using January 1, 2005 as the prevalence date and searching the electronic medical records for the 5 years preceding the prevalence date. <sup>b</sup>Frequency data were collected upon enrollment in the Mayo Clinic Biobank. <sup>c</sup>The proportion for each medication was calculated from the medication prescription history (≥1 prescription for each medication) in the electronic health record.

**Abbreviations:** *CYP2D6*, cytochrome P450 2D6; IQR, interquartile range.

tier ≥2) compared to the other phenotype groups (Table 1). Frequencies of health-related behaviors such as smoking status and alcohol consumption were similar across the 7 metabolism phenotypes ( $P=0.72$  for smoking status;  $P=0.28$  for alcohol consumption). Among the 4 diseases considered, depression (7%) and arthritis (5.7%) were most prevalent and heart diseases were uncommon (1.2% for coronary artery disease; 0% for congestive heart failure). Of the 7 commonly used medications (ie, used by ≥5% of patients) among those related to potential adverse events or inadequate efficacy with poor or ultrarapid metabolism of *CYP2D6*, the most commonly used were oxycodone (53%), codeine

(39%), and hydrocodone (36%). Frequency of use of these 3 medications was similar across the 7 metabolism phenotypes ( $P=0.44$ ,  $P=0.37$ , and  $P=0.30$ , respectively). Morphine use was highest among ultrarapid metabolizers compared to other metabolism categories (eg, 22% among ultrarapid vs 11% among extensive metabolizers).

## Hospitalization and ED visits

In the cohort of 929 patients, 285 had at least 1 hospitalization and 496 had at least 1 ED visit from January 1, 2005 through September 30, 2014 (Table 2). With the *CYP2D6* extensive metabolizers used as the reference group, the risk

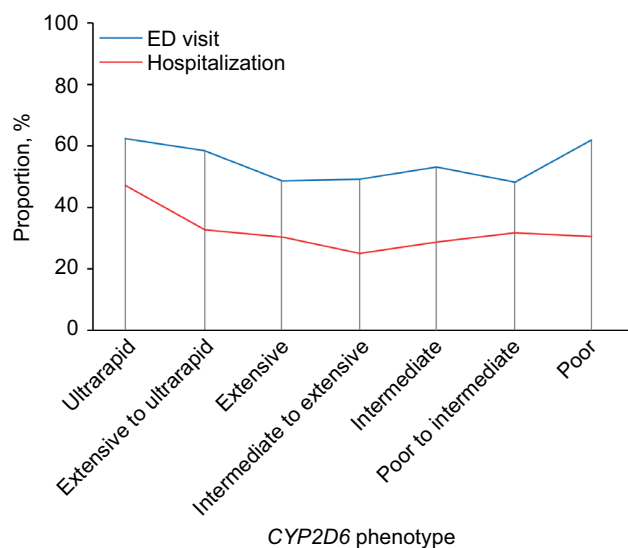
of hospitalization or an ED visit was higher for the ultrarapid metabolizers (Figures 1 and 2A, B; Table 2): 47% of ultrarapid metabolizers were hospitalized compared to 30% of extensive metabolizers during follow-up (HR, 1.69; 95% CI, 1.11–2.57). There was no association for risk of hospitalization between patients with the poor *CYP2D6* metabolism phenotype and those with the extensive phenotype (Table 2). The risk of an ED visit was higher for the ultrarapid metabolizers (62% sought care in the ED) compared to the extensive metabolizers (49% visited the ED) (HR, 1.50; 95% CI,

**Table 2** Association between *CYP2D6* metabolizer phenotype and the risk of hospitalization or an ED visit for 929 adults<sup>a</sup>

<i>CYP2D6</i> metabolizer phenotype	Hospitalization		ED visit	
	Patients, n (%)	Hazard ratio (95% CI) <sup>b</sup>	Patients, n (%)	Hazard ratio (95% CI) <sup>c</sup>
Ultrarapid (n=74)	35 (47)	1.69 (1.11–2.57)	46 (62)	1.50 (1.05–2.14)
Extensive to ultrarapid (n=145)	47 (32)	1.05 (0.72–1.54)	85 (59)	1.35 (1.00–1.80)
Extensive (n=195)	59 (30)	Reference	95 (49)	Reference
Intermediate to extensive (n=179)	45 (25)	0.78 (0.53–1.16)	88 (49)	1.04 (0.78–1.38)
Intermediate (n=203)	58 (29)	0.91 (0.63–1.31)	108 (53)	1.14 (0.87–1.51)
Poor to intermediate (n=64)	20 (31)	1.04 (0.63–1.73)	31 (48)	1.02 (0.68–1.53)
Poor (n=69)	21 (30)	0.95 (0.58–1.56)	43 (62)	1.38 (0.96–1.98)

**Notes:** <sup>a</sup>Adjusted for age and sex. <sup>b</sup>Overall  $P=0.07$ . <sup>c</sup>Overall  $P=0.14$

**Abbreviations:** CI, confidence interval; *CYP2D6*, cytochrome P450 2D6; ED, emergency department.



**Figure 1** Proportion of hospitalizations and ED visits among 929 patients according to *CYP2D6* phenotype.

**Notes:** A higher proportion of patients with the ultrarapid metabolizer phenotype were hospitalized or visited the ED, compared to patients with the extensive metabolizer phenotype.

**Abbreviations:** *CYP2D6*, cytochrome P450 2D6; ED, emergency department.

1.05–2.14). The risk of an ED visit for patients with the poor metabolizer phenotype was also higher compared to the risk for patients with the extensive phenotype (HR, 1.38; 95% CI, 0.96–1.98), although the difference was not statistically significant.

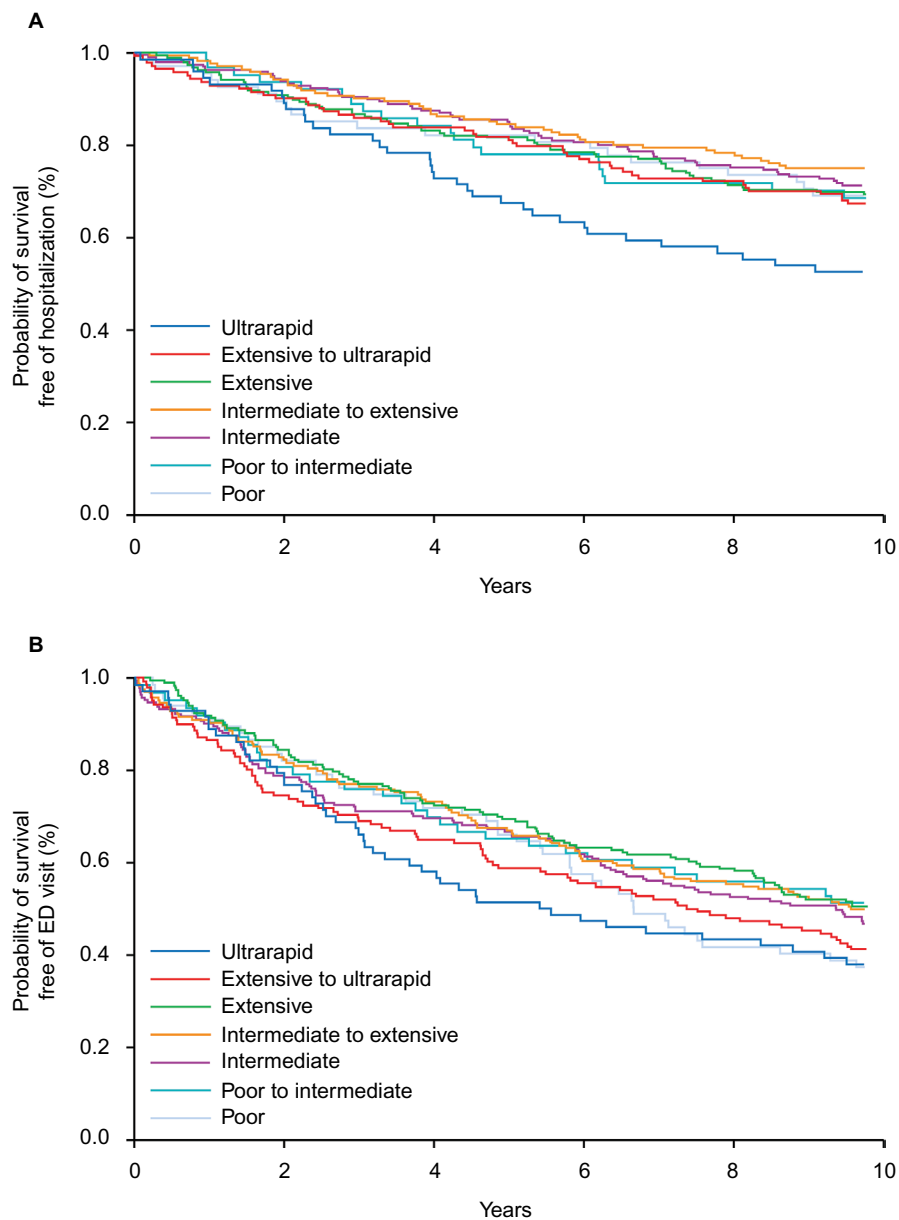
## Impact of comorbidity level

In exploratory analyses, we stratified the *CYP2D6* phenotypes and the risk of hospitalization or an ED visit by the level of comorbidity, defined as Minnesota tiers 0 or 1 (lower disease burden) or 2 or higher (ie, higher disease burden) (Table 3). The risk of hospitalization for ultrarapid metabolizers (compared to the reference group of the 5 *CYP2D6* phenotypes between ultrarapid and poor activity) was higher among participants with lower disease burden (HR, 1.85; 95% CI, 1.14–3.00), but was attenuated for participants with higher disease burden (HR, 1.38; 95% CI, 0.80–2.35). The risk of hospitalization for patients with the poor metabolism phenotype did not vary by the level of comorbidity.

The risk of an ED visit for ultrarapid metabolizers (compared to the 5 reference *CYP2D6* phenotypes) was higher for patients with higher disease burden (HR, 1.51; 95% CI, 0.94–2.41) compared to those with lower disease burden (HR, 1.14; 95% CI, 0.76–1.72). Similarly, the risk of an ED visit for poor metabolizers (compared to the 5 reference *CYP2D6* phenotypes) was higher among patients with higher disease burden (HR, 1.56; 95% CI, 0.91–2.68) compared to those with lower disease burden (HR, 1.15; 95% CI, 0.78–1.70). The interaction between disease burden (lower vs higher) and *CYP2D6* metabolism phenotypes (ultrarapid, poor, and the middle 5 categories) was not significant for hospitalization ( $P=0.18$ ) or an ED visit ( $P=0.44$ ); the power was low for these tests.

## Discussion

In this cohort study of 929 adults in a primary care practice, we found that ultrarapid metabolism of *CYP2D6* was associated with a higher risk of hospitalization or an ED visit, compared to extensive metabolism. Finding potential pharmacogenomic predictors in a middle-aged population with relatively few comorbid health conditions is encouraging because most clinical models used for predicting hospitalization have been designed for older patients with multiple chronic conditions.<sup>12,17,18</sup> In stratified analysis, we found that ultrarapid metabolism of *CYP2D6* was associated with a higher risk of hospitalization compared to the extensive metabolism phenotype among stratified patients with a lower comorbidity burden. This provides a unique finding in a population that has few traditional predictors of hospitalization.



**Figure 2** Survival analysis according to *CYP2D6* phenotype.

**Notes:** (A) Probability of survival free of hospitalization according to *CYP2D6* phenotype of 929 patients. Patients with the ultrarapid metabolizer phenotype had a higher rate of hospitalization compared to patients with the extensive metabolizer phenotype. (B) Probability of survival free of ED visit according to *CYP2D6* phenotype of 929 patients. Patients with the ultrarapid metabolizer phenotype had a higher rate of ED use compared to patients with the extensive metabolizer phenotype.

**Abbreviations:** *CYP2D6*, cytochrome P450 2D6; ED, emergency department.

Many traditional clinical models predict hospitalization on the basis of age 17 or comorbid health conditions.<sup>12,13</sup> Thus, pharmacogenomics provides a unique risk factor for predicting hospitalization among healthy people, as opposed to older and sicker populations. Pharmacogenomics also offers treatment options, such as those attempted in some cardiology studies.<sup>19</sup> In a study of 149 patients admitted to the hospital for depressive disorder, the LOS was longer for patients with lower *CYP2D6* activity than for those with higher activity (7.8 vs 5.7 days;  $P=0.002$ ).<sup>3</sup> However, criticisms of the study include a lack of defined metabolism

phenotype.<sup>20</sup> In a second small study of patients who had depression or schizophrenia, the median number of hospital days was higher for patients with poor *CYP2D6* activity than for those with other phenotypes (median, 57.5 vs 40 days).<sup>4</sup>

In the study, we discovered that patients with the ultrarapid *CYP2D6* phenotype were more likely to visit the ED, compared to those with the extensive phenotype. In a different setting, there was no difference in ED use among *CYP2D6* phenotypes in 56 patients who were being treated with codeine for sickle cell disease.<sup>21</sup> That study was small; thus, the number of ultrarapid metabolizers would also be small,

**Table 3** Association between *CYP2D6* metabolizer phenotype and the risk of hospitalization or an ED visit for 929 adults, stratified by comorbidity level<sup>a,b</sup>

Outcome	Overall cohort (N=929)			Lower comorbidity (n=686 <sup>c</sup> )			Higher comorbidity (n=232 <sup>c</sup> )		
	Patients, n	Events, n (%)	HR <sup>d</sup> (95% CI)	Patients, n	Events, n (%)	HR <sup>d</sup> (95% CI)	Patients, n	Events, n (%)	HR <sup>d</sup> (95% CI)
Hospitalization			P=0.004			P=0.03			P=0.23
Ultrarapid	74	35 (47)	1.80 (1.26–2.57)	47	19 (40)	1.85 (1.14–3.00)	27	16 (59)	1.38 (0.80–2.35)
Other 5 categories <sup>e</sup>	786	229 (29)	Reference	589	139 (24)		187	86 (46)	Reference
Poor	69	21 (30)	1.09 (0.86–1.38)	50	16 (32)	Reference	18	5 (28)	0.57 (0.23–1.40)
						1.31 (0.78–2.20)			
ED visit			P=0.08			P=0.67			P=0.10
Ultrarapid	74	46 (62)	1.35 (1.00–1.84)	47	25 (53)	1.14 (0.76–1.72)	27	21 (78)	1.51 (0.94–2.41)
Other 5 categories <sup>e</sup>	786	407 (52)	Reference	589	290 (49)	Reference	187	113 (60)	Reference
Poor	69	43 (62)	1.24 (0.91–1.71)	50	28 (56)	1.15 (0.78–1.70)	18	15 (83)	1.56 (0.91–2.68)

**Notes:** <sup>a</sup>Comorbidity levels were based on Minnesota tiers (higher  $\geq 2$ ; lower 0 or 1). <sup>b</sup>All analyses were adjusted for age and sex. <sup>c</sup>Comorbidity levels were available for 918 patients. <sup>d</sup>Hazard ratio compared ultrarapid metabolizer to the other 5 phenotypes. <sup>e</sup>The other 5 categories were 1) extensive to ultrarapid, 2) extensive, 3) intermediate to extensive, 4) intermediate, and 5) poor to intermediate.

**Abbreviations:** CI, confidence interval; *CYP2D6*, cytochrome P450 2D6; ED, emergency department; HR, hazard ratio.

and the study team primarily compared poor metabolizers with no serum morphine levels and normal metabolizers with detectable morphine levels after codeine administration. There are no directly comparable studies of *CYP2D6* phenotype and risk of an ED visit. Our findings for both hospitalization and ED visits require replication in other studies.

There is some biologic plausibility for increased risk of hospitalization or an ED visit for patients with the ultrarapid metabolism phenotype. For example, in patients with ultrarapid metabolism, the increased metabolism may decrease the plasma levels of the antidepressant fluoxetine, a selective serotonin reuptake inhibitor.<sup>22</sup> Subsequently, changes in blood levels of antidepressants may have clinical effects. Potentially supporting this theory is a study of 587 patients, in which the metabolic activity of *CYP2D6* and cytochrome P450 2C19 was higher in patients who attempted suicide than in patients who did not attempt suicide (odds ratio, 1.37; 95% CI, 1.05–1.78;  $P=0.02$ ).<sup>23</sup> With potential variation in the efficacy of antidepressants, some authors have recommended dose changes based on *CYP2D6* activity.<sup>24</sup> However, the potential effect of ultrarapid metabolism on other drugs besides antidepressants (which are metabolized by *CYP2D6*) is less clear. For example, use of metoprolol, a common  $\beta$ -blocker for heart disease, did not appear to show a relationship between titration of metoprolol according to an understanding of the polymorphisms and episodes of congestive heart failure.<sup>25</sup>

The present study has limitations. If patients were hospitalized somewhere besides Mayo Clinic, the result would be missing outcome data. However, it is unlikely that patients would differentially be hospitalized elsewhere according to their *CYP2D6* phenotype; thus, a systematic bias should be minimized. The patients in the RIGHT study were

predominantly European Americans<sup>11</sup>; thus, these findings may not apply to other populations. However, the results from Olmsted County, Minnesota, and surrounding counties may apply to the Upper Midwest.<sup>26</sup> We were able to report diseases that account for the common uses of *CYP2D6* medications and for any use by drug class. However, we could not analyze specific medications because of the low prevalence of use of individual medications and the practical difficulties in capturing the specifics of medication use in the relevant time frame before hospitalization or an ED visit. We also did not directly measure drug–gene interaction in this study. Thus, we cannot ascribe the association of the *CYP2D6* phenotype and hospitalization to any specific medication. Although classifying or grouping medications into categories could increase power, it may not reflect the effect of individual medications. However, multiple drugs (prescribed and over the counter), polypharmacy (particularly in older patients), and other environmental (nonmedication) exposures (eg, smoking, caffeine, marijuana, and workplace chemicals) are likely to interact in multiple and complex ways with the *CYP2D6* phenotype that could not be predicted from the study of single medications.<sup>27</sup> Thus, the *CYP2D6* phenotype may serve as a better summary risk marker of the risk of hospitalization and an ED visit than individual exposures; this hypothesis needs further testing.

## Conclusion

The application of pharmacogenomics to precision medicine is an important step in translating genomic medicine to clinical practice. In the study, ultrarapid *CYP2D6* metabolizer status was associated with increased risk of hospitalization and ED visits, when compared to extensive metabolizer

status. Thus, there may be clinical utility in preemptively genotyping patients to decrease health care use. Of importance, this predicted hospitalization occurred among middle-aged patients who were mostly healthy. This study helps to build the argument for pharmacogenomic testing for health care groups and health plans, although the clinical utility and cost-effectiveness will need to be evaluated more rigorously. This would require investment in the bioinformatics and clinical informatics infrastructure to support pharmacogenomics in clinical practice. Applications of pharmacogenomics can augment clinical risk predictors and provide personalized medicine for patients.

## Acknowledgments

We acknowledge Kari Takahashi, MEd, for copyediting the manuscript.

This work was supported in part by Mayo Clinic Center for Individualized Medicine, Robert D. and Patricia E. Kern Center for the Science of Health Care Delivery, National Institutes of Health grants U19 GM61388 (The Pharmacogenomics Research Network), R01 GM28157, U01 HG005137, R01 CA138461, R01 AG034676 (The Rochester Epidemiology Project), and U01 HG06379 and U01 HG06379 Supplement (The Electronic Medical Record and Genomics [eMERGE] Network).

## Disclosure

PYT serves on the medical advisory board for Axial, LLC. JLB and Mayo Clinic have licensed pharmacogenomic drug selection algorithms to Assurex Health and OneOme. The other authors report no conflicts of interest in this work.

## References

- Mannesse CK, Derckx FH, de Ridder MA, Man in 't Veld AJ, van der Cammen TJ. Contribution of adverse drug reactions to hospital admission of older patients. *Age Ageing*. 2000;29(1):35–39.
- Zanger UM, Schwab M. Cytochrome P450 enzymes in drug metabolism: regulation of gene expression, enzyme activities, and impact of genetic variation. *Pharmacol Ther*. 2013;138(1):103–141.
- Ruano G, Szarek BL, Villagra D, et al. Length of psychiatric hospitalization is correlated with CYP2D6 functional status in inpatients with major depressive disorder. *Biomark Med*. 2013;7(3):429–439.
- Kropp S, Lichtinghagen R, Winterstein K, Schlimme J, Schneider U. Cytochrome P-450 2D6 and 2C19 polymorphisms and length of hospitalization in psychiatry. *Clin Lab*. 2006;52(5–6):237–240.
- Yep T, Devine B. A cost utility analysis of CYP2D6 pharmacogenetic guided dosing versus standard dosing of risperidone for treatment of schizophrenia. *Value Health*. 2014;17(3):A217.
- Kelly LE, Rieder M, van den Anker J, et al. More codeine fatalities after tonsillectomy in North American children. *Pediatrics*. 2012;129(5):e1343–e1347.
- Rieder MJ, Carleton B. Pharmacogenomics and adverse drug reactions in children. *Front Genet*. 2014;5:78.
- Samer CF, Lorenzini KI, Rollason V, Daali Y, Desmeules JA. Applications of CYP450 testing in the clinical setting. *Mol Diagn Ther*. 2013;17(3):165–184.
- Goetz MP, Knox SK, Suman VJ, et al. The impact of cytochrome P450 2D6 metabolism in women receiving adjuvant tamoxifen. *Breast Cancer Res Treat*. 2007;101(1):113–121.
- Olson JE, Ryu E, Johnson KJ, et al. The Mayo Clinic Biobank: a building block for individualized medicine. *Mayo Clin Proc*. 2013;88(9):952–962.
- Bielinski SJ, Olson JE, Pathak J, et al. Preemptive genotyping for personalized medicine: design of the right drug, right dose, right time—using genomic data to individualize treatment protocol. *Mayo Clin Proc*. 2014;89(1):25–33.
- Haas LR, Takahashi PY, Shah ND, et al. Risk-stratification methods for identifying patients for care coordination. *Am J Manag Care*. 2013;19(9):725–732.
- Weiner JP, Starfield BH, Steinwachs DM, Mumford LM. Development and application of a population-oriented measure of ambulatory care case-mix. *Med Care*. 1991;29(5):452–472.
- Black JL 3rd, Walker DL, O’Kane DJ, Harmandayan M. Frequency of undetected CYP2D6 hybrid genes in clinical samples: impact on phenotype prediction. *Drug Metab Dispos*. 2012;40(1):111–119.
- Kramer WE, Walker DL, O’Kane DJ, et al. CYP2D6: novel genomic structures and alleles. *Pharmacogenet Genomics*. 2009;19(10):813–822.
- Ji Y, Skierka JM, Blommel JH, et al. Preemptive pharmacogenomic testing for precision medicine: a comprehensive analysis of five actionable pharmacogenomic genes using next-generation DNA sequencing and a customized CYP2D6 genotyping cascade. *J Mol Diagn*. 2016;18(3):438–445.
- Crane SJ, Tung EE, Hanson GJ, Cha S, Chaudhry R, Takahashi PY. Use of an electronic administrative database to identify older community dwelling adults at high-risk for hospitalization or emergency department visits: the elders risk assessment index. *BMC Health Serv Res*. 2010;10:338.
- Naessens JM, Stroebel RJ, Finnie DM, et al. Effect of multiple chronic conditions among working-age adults. *Am J Manag Care*. 2011;17(2):118–122.
- Khalighi B, Wu Y, Fan WQ, et al. CYP2D6 genetic information-guided metoprolol use in a cardiology clinic: a perspective study. *Cardiology*. 2014;128(Suppl 1):159.
- Penas-Lledo EM, Llerena A. CYP2D6 genetic polymorphism and psychiatry patients’ hospitalization period. *Biomark Med*. 2013;7(6):915–916.
- Shord SS, Cavallari LH, Gao W, et al. The pharmacokinetics of codeine and its metabolites in blacks with sickle cell disease. *Eur J Clin Pharmacol*. 2009;65(7):651–658.
- Hamelin BA, Turgeon J, Vallee F, Belanger PM, Paquet F, LeBel M. The disposition of fluoxetine but not sertraline is altered in poor metabolizers of debrisoquin. *Clin Pharmacol Ther*. 1996;60(5):512–521.
- Penas-Lledo E, Guillaume S, Naranjo ME, et al. A combined high CYP2D6-CYP2C19 metabolic capacity is associated with the severity of suicide attempt as measured by objective circumstances. *Pharmacogenomics J*. 2015;15(2):172–176.
- Kirchheiner J, Brosen K, Dahl ML, et al. CYP2D6 and CYP2C19 genotype-based dose recommendations for antidepressants: a first step towards subpopulation-specific dosages. *Acta Psychiatr Scand*. 2001;104(3):173–192.
- Terra SG, Pauly DF, Lee CR, et al. Beta-adrenergic receptor polymorphisms and responses during titration of metoprolol controlled release/extended release in heart failure. *Clin Pharmacol Ther*. 2005;77(3):127–137.
- St Sauver JL, Grossardt BR, Leibson CL, Yawn BP, Melton LJ 3rd, Rocca WA. Generalizability of epidemiological findings and public health decisions: an illustration from the Rochester Epidemiology Project. *Mayo Clin Proc*. 2012;87(2):151–160.
- Heim MH, Meyer UA. Evolution of a highly polymorphic human cytochrome P450 gene cluster: CYP2D6. *Genomics*. 1992;14(1):49–58.



### Pharmacogenomics and Personalized Medicine

Dovepress

#### Publish your work in this journal

Pharmacogenomics and Personalized Medicine is an international, peer-reviewed, open access journal characterizing the influence of genotype on pharmacology leading to the development of personalized treatment programs and individualized drug selection for improved safety, efficacy and sustainability. This journal is indexed on the American Chemical

Society's Chemical Abstracts Service (CAS). The manuscript management system is completely online and includes a very quick and fair peer-review system, which is all easy to use. Visit <http://www.dovepress.com/testimonials.php> to read real quotes from published authors.

Submit your manuscript here: <https://www.dovepress.com/pharmacogenomics-and-personalized-medicine-journal>