

Association of D-dimers with acute kidney injury in pregnant women: a retrospective study

Journal of International Medical Research
48(11) 1–12

© The Author(s) 2020

Article reuse guidelines:

sagepub.com/journals-permissions

DOI: 10.1177/0300060520966899

journals.sagepub.com/home/imr



Baiying Wang , Qianqian Jiang and Xiaoyan Wu

Abstract

Objective: This study was performed to determine the association of D-dimers measured at the time of admission with the development of acute kidney injury (AKI) in pregnant women.

Methods: We retrospectively analyzed the data of 625 women who developed AKI and 628 normal pregnant women admitted to our hospital from January 2014 to December 2018. The primary endpoint of the study was the development of AKI in pregnant women, and the secondary endpoint was the development of dialysis and death in women with AKI. Univariate and multivariate analyses were conducted.

Results: The D-dimer concentration was significantly higher in patients with than without pregnancy-related AKI (PR-AKI). Multivariate logistic regression showed that a D-dimer concentration of >1108 ng/mL was an independent predictor of PR-AKI. The area under the curve of the D-dimer concentration as a prognostic indicator of PR-AKI was 0.652 (95% confidence interval, 0.622–0.683), that for patients with PR-AKI undergoing dialysis was 0.819 (95% confidence interval, 0.709–0.928), and that for patients who died was 0.828 (95% confidence interval, 0.670–0.986).

Conclusion: The D-dimer concentration is significantly associated with the development of AKI in pregnant patients and may increase the risk of dialysis and death in women with AKI.

Keywords

D-dimer, pregnancy-related acute kidney injury, dialysis, mortality, intensive care unit, predictive factor

Date received: 5 March 2020; accepted: 25 September 2020

Department of Nephrology, Zhongnan Hospital of Wuhan University, Wuhan, Hubei Province, China

Corresponding author:

Xiaoyan Wu, Department of Nephrology, Zhongnan Hospital of Wuhan University, 169 Donghu Road, Wuchang District, Wuhan City, Hubei Province 430071, China.

Email: wuxiaoyan2K6@163.com



Creative Commons Non Commercial CC BY-NC: This article is distributed under the terms of the Creative Commons Attribution-NonCommercial 4.0 License (<https://creativecommons.org/licenses/by-nc/4.0/>) which permits non-commercial use, reproduction and distribution of the work without further permission provided the original work is attributed as specified on the SAGE and Open Access pages (<https://us.sagepub.com/en-us/nam/open-access-at-sage>).

Introduction

Pregnancy-related acute kidney injury (PR-AKI) is an important obstetric complication that is associated with significant maternal and fetal morbidity and mortality.¹⁻³ The incidence of PR-AKI was substantially reduced in developed and developing countries by the end of the 20th century; however, it remains unacceptably high. Moreover, a seemingly increasing incidence has been seen in the United States and Canada. This outcome may be attributed to older age and more pregnancies in patients with hypertensive disorders.^{4,5} Thus, PR-AKI remains an urgent public health problem.

Several renal biomarkers for early diagnosis of AKI have been studied in different clinical settings. However, their accuracy is controversial and their clinical application is limited.⁶ Clinically, the diagnosis of AKI is mostly determined by the serum creatinine concentration and urine output. Thus, more practical renal markers are still required.

Increased hypercoagulability throughout pregnancy has been seen under physiological conditions. Moreover, according to previous studies, pregnancy complications such as preeclampsia and HELLP (hemolysis, elevated liver enzymes, low platelet count) syndrome, which may be major causes of PR-AKI,^{4,7} are associated with a more evident hypercoagulable state than in normal pregnancy.⁸ Consistently, the D-dimer concentration is increased during pregnancy.⁸⁻¹⁰

D-dimers are a specific breakdown product of cross-linked fibrin and are commonly used in the diagnosis of pulmonary embolism and venous thromboembolism.^{11,12} A high plasma D-dimer concentration has been identified as a prognostic factor in several malignancies, joint infection, rheumatoid arthritis, and critical illness. The inflammatory response plays an important

role.^{13,14} However, the effect of an elevated D-dimer concentrations on patients with PR-AKI has not been reported. In this study, we investigated the correlation between the D-dimer concentration and PR-AKI and evaluated the prognostic value of the D-dimer concentration for dialysis and death in patients with PR-AKI.

Methods

Study population

This case-control, retrospective study was conducted at the obstetrics department of Zhongnan Hospital of Wuhan University. Pregnant women from January 2014 to December 2018 were reviewed. Most were hospitalized for childbirth, and some were hospitalized for the occurrence of complications while giving birth in the hospital. This study protocol was approved by the Ethics Committee of Zhongnan Hospital of Wuhan University. All patients provided informed consent for participation in the study.

The inclusion criteria were a gestational age of >20 weeks, an available baseline serum creatinine concentration, and complete clinical data. The exclusion criteria were a gestational age of <20 weeks, a history of known hematologic disease affecting coagulation, a history of renal replacement therapy and nephritis, a history of elevated creatinine, hospitalization in the obstetrics department for <24 hours, and missing clinical data.

Significant hemodynamic shifts occur during pregnancy, including an increased blood volume.¹⁵ This means that the creatinine concentration during pregnancy is lower than that during non-pregnancy, and the diagnostic criteria applicable to non-pregnancy do not necessarily apply during pregnancy. In the present study, we did not use the usual diagnostic criteria for AKI, such as the KDIGO criteria.¹⁶

PR-AKI was defined as a 50% increase in the serum creatinine concentration versus baseline and a concentration of $>70.72 \mu\text{mol/L}$.^{2,7,15,17} According to this definition, we included 625 pregnant women who developed AKI during hospitalization. In addition, women without AKI were selected as controls by matching the gestational age. Overall, 625 patients with PR-AKI and 628 normal pregnant women were available for the final analysis. The inclusion process of these 625 patients with PR-AKI is shown as Figure 1.

Moderate to severe PR-AKI was defined as a serum creatinine concentration of $>124 \mu\text{mol/L}$.¹⁸ Renal recovery was defined as a decrease in the serum creatinine concentration to a normal level before discharge. Pregnancy-specific complications included preeclampsia, eclampsia, HELLP syndrome, thrombotic microangiopathy, and acute fatty liver of pregnancy. The diagnosis of these diseases was confirmed by consulting the International Classification of Diseases codes in the patients' electronic medical records.

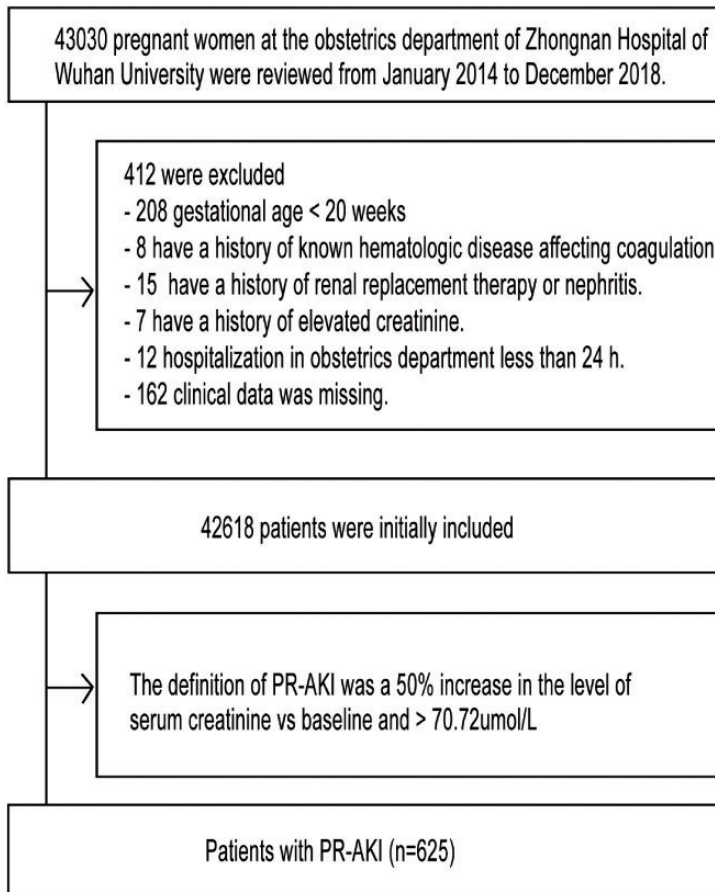


Figure 1. Study enrollment flow chart.
PR-AKI, pregnancy-related acute kidney injury.

Data collection and statistical analysis

The patients' D-dimer concentrations and demographic, clinical, and biochemical data were collected immediately after admission to the obstetrics department. We carefully screened the patients' medical history to confirm the time and cause of AKI, clinical symptoms, intensive care unit hospitalization, dialysis, and death. The primary endpoint was the occurrence of PR-AKI, and the secondary endpoint was the development of dialysis and death in patients with PR-AKI.

Data were analyzed using SPSS version 22.0 software (IBM Corp., Armonk, NY, USA). The results were recorded as mean \pm standard deviation or median (interquartile range) for quantitative variables. The two-sample t test or the Mann-Whitney U test was used for quantitative variables as appropriate. Categorical data are presented as proportions, and the chi-square test was used for qualitative variables. A *P* value of <0.05 was considered statistically significant. All variables with a *P* value of <0.05 in the univariate analysis were entered into the multivariate model. The prognostic value of the D-dimer concentration was evaluated using respective receiver operating characteristic (ROC) curves.

Results

Patient characteristics in the PR-AKI group and control group

The baseline characteristics of women with and without PR-AKI are shown in Table 1. The two groups had similar rates of preexisting diabetes and multipara. Women with PR-AKI were significantly more likely to be older ($P=0.007$) and have preexisting hypertension ($P<0.001$). In addition, women with PR-AKI had a higher systolic blood pressure, diastolic blood pressure, leukocyte count, alanine aminotransferase

concentration, aspartate aminotransferase concentration, and total bilirubin concentration upon admission ($P<0.05$). Moreover, patients with PR-AKI had a higher prothrombin time, activated partial thromboplastin time, and D-dimer concentration ($P<0.05$). The platelet count, fibrinogen concentration, and serum albumin concentration were lower in patients with than without PR-AKI. There were no significant differences in hemoglobin between the groups.

In the PR-AKI group, 22 patients (3.52%) received renal replacement therapy and 6 deaths (0.96%) were reported. The leading cause of death was amniotic fluid embolism, followed by acute fatty liver and postpartum hemorrhage. No deaths occurred in the group without PR-AKI, and none of the patients in this group received renal replacement therapy.

Comparison of clinical variables between patients with high and low D-dimer concentrations

The patients with PR-AKI were divided into two groups according to their D-dimer concentrations: Group A (D-dimer concentration of <1108 ng/mL) and Group B (D-dimer concentration of >1108 ng/mL). We selected the cut-off by ROC curves. The baseline characteristics of each group are shown in Table 2.

Group B had significantly higher values than Group A in terms of multiple pregnancy ($P<0.001$), the leukocyte count ($P<0.001$), prothrombin time ($P<0.001$), activated partial thromboplastin time ($P<0.001$), aspartate aminotransferase concentration ($P<0.001$), alanine aminotransferase concentration ($P<0.001$), total bilirubin concentration ($P<0.001$), and serum creatinine concentration ($P<0.001$). However, the hemoglobin concentration ($P<0.001$), platelet count ($P<0.001$), fibrinogen concentration ($P<0.001$), and

Table 1. Baseline characteristics of patients with PR-AKI and without PR-AKI.

Characteristics	PR-AKI (n = 625)	No PR-AKI (n = 628)	P value
Age, years	31.8 ± 6.4	30.9 ± 5.5	0.007 ^a
Hypertension	24 (3.8)	5 (0.79)	<0.001 ^b
Diabetes	4 (0.6)	2 (0.3)	0.410 ^b
Test tube pregnancy	95 (15.2)	31 (4.9)	<0.001 ^b
Multipara	233 (37.3)	252 (40.1)	0.301 ^b
Multiple pregnancy	108 (17.3)	55 (8.7)	<0.001 ^b
Admission SBP, mmHg	140.6 ± 26.6	122.4 ± 14.9	<0.001 ^a
Admission DBP, mmHg	91.5 ± 19.8	77.2 ± 11.1	<0.001 ^a
Leukocytes, × 10 ⁹ /L	10.6 ± 4.4	9.6 ± 2.9	<0.001 ^a
Hemoglobin, g/L	115.9 ± 22.5	114.5 ± 16.6	0.213 ^a
ALT, U/L	17 (11–35)	12 (9–16)	<0.001 ^c
AST, U/L	28 (20–47)	17 (15–21)	<0.001 ^c
TBIL, μmol/L	9.5 (6.8–14.6)	9 (6.7–12.3)	0.005 ^c
PT, seconds	10.2 ± 4.1	9.9 ± 0.6	0.045 ^a
APTT, seconds	30.9 ± 8.0	27.7 ± 3.6	<0.001 ^a
FIB, mg/L	423.5 (364–472)	449 (411–494)	<0.001 ^c
D-dimers (>1108 ng/mL)	223 (35.7)	65 (10.4)	<0.001 ^b
PLT, × 10 ⁹ /L	166 (124–208)	188 (152.5–226)	<0.001 ^c
Serum albumin, g/L	30.3 ± 5.6	34.6 ± 4.2	<0.001 ^a
Serum creatinine, μmol/L	54 (42.4–60.4)	39.1 (30.5–48.2)	<0.001 ^c
Urine protein positive	393 (62.9)	222 (35.3)	<0.001 ^b
Cesarean	500 (80)	464 (73.8)	0.01 ^b

Data are presented as mean ± standard deviation, median (range), or n (%).

^aP values evaluated by two-sample t tests.

^bP values evaluated by chi-square test.

^cP values evaluated by Mann–Whitney U test.

PR-AKI, pregnancy-related acute kidney injury; SBP, systolic blood pressure; DBP, diastolic blood pressure; ALT, alanine aminotransferase; AST, aspartate aminotransferase; TBIL, total bilirubin; PT, prothrombin time; APTT, activated partial thromboplastin time; FIB, fibrinogen; PLT, platelets.

serum albumin concentration ($P < 0.001$) were significantly lower in Group B. There were no significant differences between the groups in age, gestational age, preexisting diabetes, in vitro fertilization, multipara status, preexisting hypertension, admission systolic blood pressure, admission diastolic blood pressure, or positive urine protein.

D-dimer concentration as a predictor of primary outcome

A multivariate logistic regression analysis was performed on the indicators listed in Table 1. All indicators with a P value of

< 0.05 were included. The results showed that a D-dimer concentration of > 1108 ng/mL was associated with the development of PR-AKI in the univariate analysis (odds ratio, 4.805; 95% confidence interval [CI], 3.544–6.515; $P < 0.001$). It was further proven to be an independent predictor of PR-AKI (odds ratio, 2.138; 95% CI, 1.448–3.157; $P < 0.001$) in the multivariate analysis after adjustment for age, comorbidities, leukocyte count, transaminase concentrations, total bilirubin concentration, coagulation parameters, and serum albumin concentration. The results are shown in Table 3. We can conclude that

Table 2. Comparison of clinical variables between patients with high and low D-dimer concentrations.

Characteristics	D-dimers of <1108 ng/mL (n = 399)	D-dimers of >1108 ng/mL (n = 226)	P-value
Age, years	31.9 ± 6.2	31.8 ± 6.5	0.908 ^a
Gestational age, weeks	35.73 ± 4.18	35.53 ± 3.43	0.527 ^a
Multiple pregnancy	38 (9.5)	70 (31.0)	<0.001 ^b
Admission SBP, mmHg	141.1 ± 26.7	139.9 ± 26.5	0.607 ^a
Admission DBP, mmHg	92.0 ± 19.4	90.5 ± 20.5	0.364 ^a
Leukocytes, ×10 ⁹ /L	10.00 ± 3.17	11.79 ± 5.82	<0.001 ^a
Hemoglobin, g/L	119.37 ± 17.51	109.69 ± 28.27	<0.001 ^a
PLT, ×10 ⁹ /L	174 (142–212)	140 (87–193)	<0.001 ^c
PT, seconds	9.52 ± 0.81	11.47 ± 6.57	<0.001 ^a
APTT, seconds	29.16 ± 3.65	34.06 ± 11.83	<0.001 ^a
FIB, mg/L	433.88 ± 86.39	362.07 ± 149.40	<0.001 ^a
ALT, U/L	16 (10–28)	24 (13–105)	<0.001 ^c
AST, U/L	24 (19–36)	42 (25–127)	<0.001 ^c
TBIL, μmol/L	8.5 (6.3–12.3)	12.75 (8.1–23.7)	<0.001 ^c
Serum creatinine, μmol/L	74.8 (62.5–86.7)	85.9 (75.0–113.4)	<0.001 ^c
Urea nitrogen, mmol/L	5.19 ± 2.36	6.82 ± 5.53	<0.001 ^a
Serum albumin, g/L	31.85 ± 4.84	27.41 ± 5.84	<0.001 ^a
Serum potassium, mmol/L	4.15 ± 0.45	4.33 ± 0.62	<0.001 ^a
Positive urine protein	148 (37.1)	84 (37.2)	1.000 ^d

Data are presented as mean ± standard deviation, median (range), or n (%).

^aP values evaluated by two-sample t tests.

^bP values evaluated by chi-square test.

^cP values evaluated by Mann–Whitney U test.

SBP, systolic blood pressure; DBP, diastolic blood pressure; PLT, platelets; PT, prothrombin time; APTT, activated partial thromboplastin time; FIB, fibrinogen; ALT, alanine aminotransferase; AST, aspartate aminotransferase; TBIL, total bilirubin.

the D-dimer concentration is significantly associated with the development of AKI in pregnant patients.

Comparison of clinical characteristics between patients with high and low D-dimer concentrations

Table 4 shows the clinical characteristics of Groups A and B. Four patients (1.0%) in Group A and 18 patients (7.9%) in Group B received renal replacement therapy ($P < 0.001$). A significantly higher percentage of patients in Group B than in Group A had edema symptoms ($P = 0.043$), mechanical ventilation therapy ($P < 0.001$), and the possibility of staying in the intensive care unit ($P < 0.001$). Moreover, renal

nonrecovery ($P < 0.001$) and death ($P = 0.025$) were significantly more common in Group B than in Group A.

Prognostic value of D-dimer concentration for secondary outcome

The prognostic value of the D-dimer concentration was evaluated using ROC analysis. Figure 2 shows the ROC curves plotted using independent predictors of PR-AKI. The area under the curve (AUC) of the D-dimer concentration was 0.652 (95% CI, 0.622–0.683; $P < 0.001$), showing a moderate predictive value.

Figure 3 shows the prognostic value of the D-dimer concentration in patients with PR-AKI. The AUC of the D-dimer

Table 3. Univariate and multivariate regression analysis for pregnancy-related acute kidney injury.

	Univariate analysis		Multivariate analysis	
	OR (95% CI)	P	OR (95% CI)	P
Age	1.749 (1.336–2.290)	<0.001		
Hypertension	4.976 (1.886–13.126)	0.001		
In vitro fertilization	3.452 (2.264–5.264)	<0.001	2.330 (1.353–4.011)	0.002
Multiple pregnancy	2.176 (1.540–3.075)	<0.001		
Admission SBP of >140 mmHg	7.467 (5.534–10.075)	<0.001	1.970 (1.209–3.209)	0.007
Admission DBP of >90 mmHg	8.446 (6.287–11.346)	<0.001	2.882 (1.790–4.642)	<0.001
Elevated leukocytes	1.575 (1.253–1.981)	<0.001	1.390 (1.039–1.859)	0.027
Elevated ALT	8.852 (5.571–14.064)	<0.001		
Elevated AST	13.251 (8.389–20.930)	<0.001	4.878 (2.389–9.959)	<0.001
Elevated TBIL	2.921 (2.029–4.206)	<0.001		
APTT elevation	15.230 (3.618–64.106)	<0.001		
PT elevation	20.262 (4.867–84.363)	<0.001		
Reduced FIB	2.476 (1.923–3.188)	<0.001	1.507 (1.087–2.089)	0.014
D-dimers of >1108 ng/mL	4.805 (3.544–6.515)	<0.001	2.138 (1.448–3.157)	<0.001
Reduced PLT	3.979 (2.607–6.073)	<0.001		
Reduced serum albumin	7.314 (5.386–9.932)	<0.001	2.078 (1.415–3.052)	<0.001
Urine protein positive	3.098 (2.460–3.901)	<0.001	1.785 (1.340–2.378)	<0.001

OR, odds ratio; CI, confidence interval; SBP, systolic blood pressure; DBP, diastolic blood pressure; ALT, alanine aminotransferase; AST, aspartate aminotransferase; TBIL, total bilirubin; PT, prothrombin time; APTT, activated partial thromboplastin time; FIB, fibrinogen; PLT, platelets.

concentration as a prognostic indicator for dialysis was 0.819 (95% CI, 0.709–0.928; $P < 0.001$). The cutoff of the D-dimer concentration that maximized the sensitivity and specificity for predicting dialysis was 2389 ng/mL. The sensitivity was 77.3% and the specificity was 84.4% when we used a D-dimer concentration of 2389 ng/mL as a cutoff, and there was a significant difference between the two groups ($P < 0.05$) (Figure 4).

The D-dimer concentration as a prognostic indicator for other outcomes is shown in Figure 3. The AUC values of the D-dimer concentration for predicting death, renal failure, and adverse outcomes in patients with PR-AKI were as follows: death (AUC, 0.828; 95% CI, 0.670–0.986; $P = 0.006$), renal failure (AUC, 0.631), and adverse outcomes (AUC, 0.657) (adverse outcomes = intensive care unit hospitalization + dialysis + death + renal failure).

In conclusion, the D-dimer concentration may increase the risk of dialysis and death in women with AKI.

Discussion

In this case-control study, we found that the D-dimer concentration was associated with the development of PR-AKI. A D-dimer concentration of >1108 ng/mL was an independent predictor of PR-AKI, and the prognostic value of the D-dimer concentration for PR-AKI was moderate. When patients with PR-AKI were divided into two groups based on their D-dimer concentrations, the serum creatinine concentration and percentage of moderate to severe PR-AKI were significantly higher in Group B (D-dimer concentration of >1108 ng/mL) than in Group A (D-dimer concentration of <1108 ng/mL). In addition, in patients with PR-AKI, the D-dimer concentration

Table 4. Clinical characteristics of patients with PR-AKI.

Characteristics	D-dimers of <1108 ng/mL (n = 399)	D-dimers of >1108 ng/mL (n = 226)	P -value
Preeclampsia/HELLP syndrome	200 (50.1)	105 (46.5)	0.761 ^b
Gestation age, weeks	36 ± 4.16	36 ± 3.19	0.806 ^a
Birth weight, g	2618 (2300–3200)	2616 (2397–2660)	0.001 ^c
Cesarean	316 (79.2)	184 (81.4)	0.534 ^b
Edema	76 (19.0)	59 (26.1)	0.043 ^b
Dyspnea	15 (3.8)	9 (4.0)	1.000 ^b
Dizziness	56 (14.0)	25 (11.1)	0.322 ^b
Blurred vision	41 (10.3)	20 (8.8)	0.674 ^b
ICU	94 (23.6)	103 (45.6)	<0.001 ^b
Antihypertension	174 (43.6)	98 (43.4)	1.000 ^b
Magnesium sulfate	113 (28.3)	65 (28.8)	0.927 ^b
Mechanical ventilation	9 (2.3)	36 (15.9)	<0.001 ^b
Moderate to severe PR-AKI	54 (13.5)	73 (32.3)	<0.001 ^b
Dialysis	4 (1.0)	18 (8.0)	<0.001 ^b
Renal recovery	323 (81.0)	151 (66.8)	<0.001 ^b
Death	1 (0.3)	5 (2.2)	0.025 ^b

Data are presented as mean ± standard deviation, median (range), or n (%).

^aP values evaluated by two-sample t tests.

^bP values evaluated by chi-square test.

^cP values evaluated by Mann–Whitney U test.

PR-AKI, pregnancy-related acute kidney injury; HELLP, hemolysis, elevated liver enzymes, low platelet count; ICU, intensive care unit.

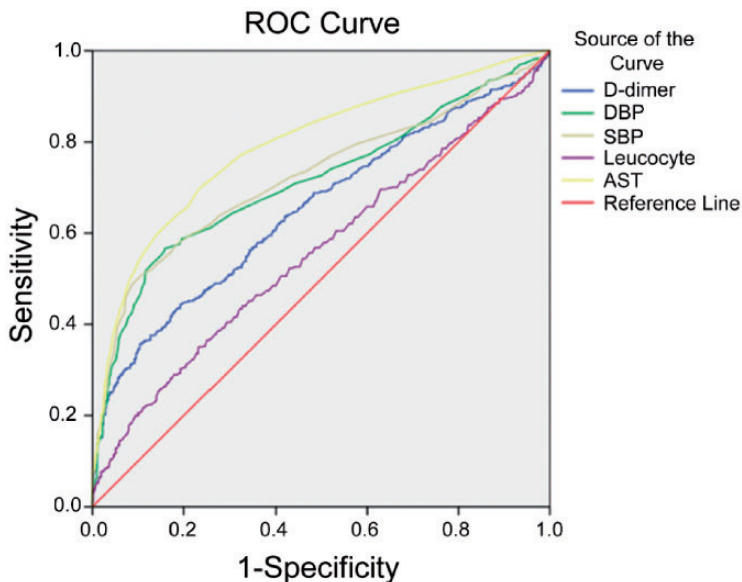


Figure 2. ROC curves of D-dimers, AST, admission SBP, admission DBP, and leukocytes as predictors of PR-AKI.

ROC, receiver operating characteristic; AST, aspartate aminotransferase; DBP, diastolic blood pressure; SBP, systolic blood pressure; PR-AKI, pregnancy-related acute kidney injury.

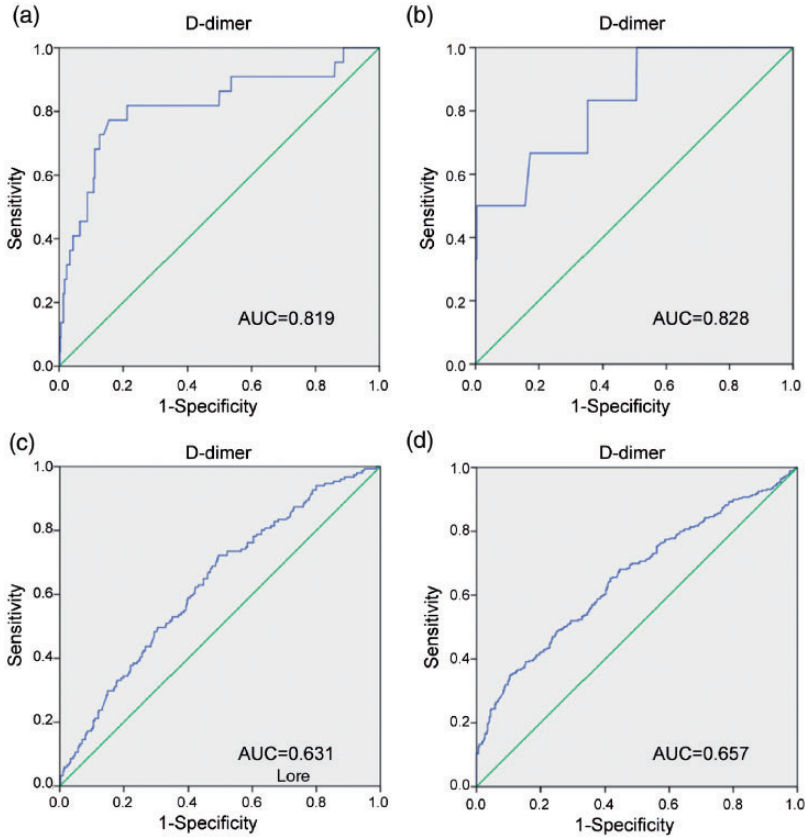


Figure 3. Prognostic value of D-dimer concentration in patients with pregnancy-related acute kidney injury. (a) D-dimer concentration as a prognostic indicator for dialysis (AUC, 0.819). (b) D-dimer concentration as a prognostic indicator for death (AUC, 0.828). (c) D-dimer concentration as a prognostic indicator for renal non-recovery (AUC, 0.631). (d) D-dimer concentration as a prognostic indicator for adverse outcomes (AUC, 0.657). AUC, area under the curve.

was significantly associated with renal replacement therapy and in-hospital mortality. The AUC of the D-dimer concentration for dialysis and death was 0.819 and 0.828, respectively.

Physiological hypercoagulability is usually present in a normal pregnancy and is indispensable for reduction of postpartum hemorrhage. However, our study showed that women with PR-AKI exhibited higher D-dimer concentrations than women with normal pregnancy. To our knowledge, few

studies have focused on the relationship between the D-dimer concentration and PR-AKI. Godara et al.¹⁹ enrolled 57 patients with PR-AKI and observed that higher D-dimer concentrations were more common in patients with renal non-recovery than in those with renal recovery.

Although the mechanisms linking the D-dimer concentration to PR-AKI are unclear, previous studies have revealed some clues. The D-dimer concentration is a useful biomarker of hemostasis and

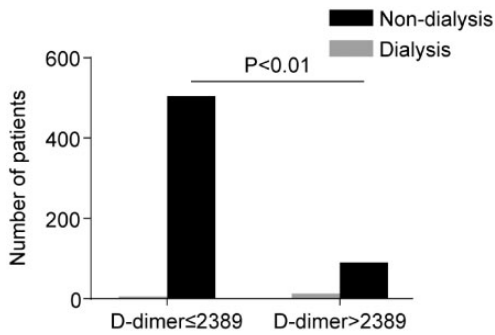


Figure 4. Among patients with pregnancy-related acute kidney injury, a significant difference was found in the number of patients undergoing dialysis between those with a D-dimer concentration of >2389 and <2389 ng/mL.

fibrinolysis. In recent years, however, evidence has emerged to suggest that the D-dimer concentration is likely to rise in the setting of systemic inflammation and infection. The predictive value of the D-dimer concentration in critically ill patients has been confirmed. In 2002, Shorr et al.²⁰ found that the presence of D-dimers may reflect an imbalance between proinflammatory and anti-inflammatory cytokines. With an increase in D-dimers, the tumor necrosis factor- α , interleukin-6, and interleukin-8 levels increase and the incidence of multisystem organ failure and death also increase in critically ill patients. Similarly, Shitrit et al.²¹ noted that the D-dimer concentration was correlated with the organ system failure index. To exclude the interference of complications, we adopted a multivariate regression analysis to adjust for possible confounding factors, and the results showed that a rise in the D-dimer concentration can be used as an independent predictor of PR-AKI ($P < 0.001$) (Table 3).

In the field of pregnancy, the D-dimer concentration has been studied in patients with gestational hypertensive disorders (GHDs). Baboolall et al.²² performed a retrospective observational cohort study of

443 women and concluded that the D-dimer concentration might predict severe preeclampsia (AUC, 0.828). Similarly, Kim et al.²³ performed a retrospective cohort study of pregnant women with GHD and noted that patients with severe GHD had significantly higher D-dimer concentrations than those with non-severe GHD. The authors attributed these results to formation of multiple microthrombi in the placenta, resulting in the release of circulating factors into the maternal circulation and consequent endothelial dysfunction and inflammatory response. Therefore, activation of inflammatory cytokines and coagulation pathways may play an important role between the D-dimer concentration and PR-AKI.

The causes of PR-AKI are diverse and include septic abortions, severe hemorrhage, sepsis, and pregnancy-specific complications, all of which may affect the inflammatory and coagulation systems to varying degrees.^{4,10,17} Preeclampsia has been associated with a hypercoagulable state.²⁴ Thrombotic microangiopathy comprises thrombotic thrombocytopenic purpura and atypical hemolytic uremic syndrome. Their common characteristics are occlusion of small arteries and capillaries and platelet aggregation. Activation of coagulation pathways may influence inflammation by producing inflammatory factors.²⁵ In contrast, a persistent inflammatory response can lead to a hypercoagulable state.

In routine prenatal examinations and care, we can screen out most patients with high-risk pregnancies who are usually prone to AKI, such as patients undergoing dialysis, patients with nephritis or abnormal renal function, and patients with autoimmune diseases such as systemic lupus erythematosus. For women without the above-mentioned high-risk factors, however, the possibility of developing AKI during pregnancy cannot be ruled out. Based on

the findings of the present study, we conclude that an increased D-dimer concentration is an independent risk factor for AKI in pregnant patients and can increase the risk of dialysis and death. Therefore, evaluation of the D-dimer concentration in pregnant women can help to identify higher-risk groups, and close monitoring of their renal function and urine output can help clinicians to take appropriate intervention measures.

This study has two main strengths. First, to the best of our knowledge, this is the first study to report the relationship between the D-dimer concentration and PR-AKI. Second, we assessed the usefulness of the D-dimer concentration as a predictor of dialysis and in-hospital mortality.

Our study also has several limitations. First, we did not serially evaluate the D-dimer concentration during pregnancy, although the D-dimer concentration gradually increases during pregnancy. However, we reduce this error by matching the gestational age. Second, we failed to compare the D-dimer concentration with other renal injury markers. This is mainly because this was a retrospective study and some data were missing. Finally, this was a single center study, and the results do not necessarily apply to other centers. Prospective, large-sample clinical studies are required.

Conclusions

Our research suggests that a D-dimer concentration of >1108 ng/mL is an independent predictor of AKI in pregnant women and that an elevated D-dimer concentration increases the risk of dialysis and death in women with AKI. Thus, we should closely monitor the renal function when the D-dimer concentration is high and ensure timely intervention.

Declaration of conflicting interest

The authors declare that there is no conflict of interest.

Funding

The study was supported by Zhongnan Hospital of Wuhan University and the Science, Technology and Innovation Seed Fund of Zhongnan Hospital of Wuhan University (No. znp2017044).

ORCID iD

Baiying Wang  <https://orcid.org/0000-0003-2577-8399>

References

1. Prakash J, Kumar H, Sinha DK, et al. Acute renal failure in pregnancy in a developing country: twenty years of experience. *Ren Fail* 2006; 28: 309–313.
2. Bouaziz M, Chaari A, Turki O, et al. Acute renal failure and pregnancy: a seventeen-year experience of a Tunisian intensive care unit. *Ren Fail* 2013; 35: 1210–1215.
3. Prakash J, Pant P, Prakash S, et al. Changing picture of acute kidney injury in pregnancy: study of 259 cases over a period of 33 years. *Indian J Nephrol* 2016; 26: 262–267.
4. Rao S and Jim B. Acute kidney injury in pregnancy: the changing landscape for the 21st century. *Kidney Int Rep* 2018; 3: 247–257.
5. Jim B and Garovic VD. Acute kidney injury in pregnancy. *Semin Nephrol* 2017; 37: 378–385.
6. Wasung ME, Chawla LS and Madero M. Biomarkers of renal function, which and when? *Clin Chim Acta* 2015; 438: 350–357.
7. Huang C and Chen S. Acute kidney injury during pregnancy and puerperium: a retrospective study in a single center. *BMC Nephrol* 2017; 18: 146.
8. Lucena FC, Lage EM, Teixeira PG, et al. Longitudinal assessment of D-dimer and plasminogen activator inhibitor type-1 plasma levels in pregnant women with risk

- factors for preeclampsia. *Hypertens Pregnancy* 2019; 38: 58–63.
9. Kovac MK, Lalic-Cosic SZ, Dmitrovic JM, et al. Thrombin generation, D-dimer and protein S in uncomplicated pregnancy. *Clin Chem Lab Med* 2015; 53: 1975–1979.
 10. Ataullakhanov FI, Koltsova EM, Balandina AN, et al. Classic and global hemostasis testing in pregnancy and during pregnancy complications. *Semin Thromb Hemost* 2016; 42: 696–716.
 11. Suzuki T, Distanto A, Zizza A, et al. Diagnosis of acute aortic dissection by D-dimer: the International Registry of Acute Aortic Dissection Substudy on Biomarkers (IRAD-Bio) experience. *Circulation* 2009; 119: 2702–2707.
 12. Prisco D and Grifoni E. The role of D-dimer testing in patients with suspected venous thromboembolism. *Semin Thromb Hemost* 2009; 35: 50–59.
 13. Chung S, Kim JE, Park S, et al. Neutrophil and monocyte activation markers have prognostic impact in disseminated intravascular coagulation: in vitro effect of thrombin on monocyte CD163 shedding. *Thromb Res* 2011; 127: 450–456.
 14. Xiong L, Li S and Dai M. Comparison of D-dimer with CRP and ESR for diagnosis of periprosthetic joint infection. *J Orthop Surg Res* 2019; 14: 240.
 15. Gonzalez Suarez ML, Kattah A, Grande JP, et al. Renal disorders in pregnancy: core curriculum 2019. *Am J Kidney Dis* 2019; 73: 119–130.
 16. Kellum JA and Lameire N. Diagnosis, evaluation, and management of acute kidney injury: a KDIGO summary (Part 1). *Crit Care* 2013; 17: 204.
 17. Galvagno SM Jr and Camann W. Sepsis and acute renal failure in pregnancy. *Anesth Analg* 2009; 108: 572–575.
 18. Krane NK and Hamrahian M. Pregnancy: kidney diseases and hypertension. *Am J Kidney Dis* 2007; 49: 336–345.
 19. Godara SM, Kute VB, Trivedi HL, et al. Clinical profile and outcome of acute kidney injury related to pregnancy in developing countries: a single-center study from India. *Saudi J Kidney Dis Transpl* 2014; 25: 906–911.
 20. Shorr AF, Thomas SJ, Alkins SA, et al. D-dimer correlates with proinflammatory cytokine levels and outcomes in critically ill patients. *Chest* 2002; 121: 1262–1268.
 21. Shitrit D, Izbicki G, Shitrit AB, et al. Prognostic value of a new quantitative D-dimer test in critically ill patients 24 and 48 h following admission to the intensive care unit. *Blood Coagul Fibrinolysis* 2004; 15: 15–19.
 22. Baboolall U, Zha Y, Gong X, et al. Variations of plasma D-dimer level at various points of normal pregnancy and its trends in complicated pregnancies: A retrospective observational cohort study. *Medicine (Baltimore)* 2019; 98: e15903.
 23. Kim SJ, Ahn HJ, Park JY, et al. The clinical significance of D-dimer concentrations in patients with gestational hypertensive disorders according to the severity. *Obstet Gynecol Sci* 2017; 60: 542–548.
 24. Oladosu-Olayiwola O, Olawumi H, Babatunde A, et al. Fibrinolytic proteins of normal pregnancy and pre-eclamptic patients in North West Nigeria. *Afr Health Sci* 2018; 18: 576–583.
 25. Yamada Y, Kawaguchi R, Iwai K, et al. Preoperative plasma D-dimer level is a useful prognostic marker in ovarian cancer. *J Obstet Gynaecol* 2019: 1–5.