

# Timeline of pain before dementia diagnosis: a 27-year follow-up study

Sushmithadev Kumaradev<sup>a</sup>, Aurore Fayosse<sup>a</sup>, Aline Dugravot<sup>a</sup>, Julien Dumurgier<sup>a</sup>, Christian Roux<sup>b</sup>, Mika Kivimäki<sup>c,d</sup>, Archana Singh-Manoux<sup>a,c</sup>, Séverine Sabia<sup>a,c,\*</sup>

## Abstract

This study examines the importance of length of follow-up on the association between pain and incident dementia. Further objective was to characterize pain trajectories in the 27 years preceding dementia diagnosis and compare them with those among persons free of dementia during the same period. Pain intensity and pain interference (averaged as total pain) were measured on 9 occasions (1991–2016) using the Short-Form 36 Questionnaire amongst 9046 (women = 31.4%) dementia-free adults aged 40 to 64 years in 1991; 567 dementia cases were recorded between 1991 and 2019. Cox regression was used to assess the association between pain measures at different time points and incident dementia and mixed models to assess pain trajectories preceding dementia diagnosis or end point for dementia-free participants. Results from Cox regression showed moderate/severe compared with mild/no total pain, pain intensity, and pain interference not to be associated with dementia when the mean follow-up was 25.0, 19.6, 14.5, or 10.0 years. These associations were evident for a mean follow-up of 6.2 years: for total pain (hazard ratio = 1.72; 95% confidence intervals = 1.28–2.33), pain intensity (1.41; 1.04–1.92), and pain interference (1.80; 1.30–2.49). These associations were stronger when the mean follow-up for incidence of dementia was 3.2 years. Twenty-seven-year pain trajectories differed between dementia cases and noncases with small differences in total pain and pain interference evident 16 years before dementia diagnosis (difference in the total pain score = 1.4, 95% confidence intervals = 0.1–2.7) and rapidly increasing closer to diagnosis. In conclusion, these findings suggest that pain is a correlate or prodromal symptom rather than a cause of dementia.

**Keywords:** Pain, Dementia, Timeline, Preclinical symptoms, Cohort, Prospective study

## 1. Introduction

Permanent structural changes in brains of those with chronic pain<sup>2,7,11,25</sup> resemble that seen in neurodegenerative diseases such as dementia.<sup>3</sup> Pain dimensions, namely sensory-discriminative, cognitive-evaluative, and affective motivational, are known to activate a wide network of brain regions.<sup>13,19</sup> It is likely that there is an overlap in structural brain changes in chronic pain and dementia. Chronic pain affects cognitive, mood, and mental status<sup>6,10</sup> and is also a feature of dementia.<sup>8,12</sup> However,

the long-term association between pain and dementia remains unclear; pain could be a cause, correlate, or a prodromal feature of dementia.

Associations of pain or painful chronic conditions with cognitive decline<sup>5,20–22,28,29</sup> and dementia have been documented in several studies<sup>9,15,27,33,36,37,39</sup>; however, few studies have examined the temporal nature of this association, and the evidence is inconsistent. Most aforementioned studies were conducted amongst older populations and had less than 5-year mean follow-up. Given that dementia is characterized by a preclinical period lasting 15 to 20 years,<sup>24</sup> it is possible that previous findings were affected by reverse causation whereby the observed association is primarily due to increase in pain in the preclinical period of dementia.

Accordingly, our objective was to examine the temporal association between pain scores, composed of pain interference and pain intensity, and incident dementia using time-to-event analysis with mean duration between pain assessment and dementia diagnosis varying from 25 to 3.2 years. Complementarily, we characterized pain trajectories, in almost 3 decades preceding dementia diagnosis and compared them with those observed among persons free of dementia during the same period.

## 2. Methods

### 2.1. Study population

The Whitehall II study is an ongoing population-based cohort started in 1985 among 10308 British civil servants (6895 men and 3413 women), aged 35 to 55 years. Data collection involves

Sponsorships or competing interests that may be relevant to content are disclosed at the end of this article.

<sup>a</sup> Inserm 1153, Epidemiology of Ageing and Neurodegenerative Diseases, Université de Paris, Paris, France, <sup>b</sup> Inserm 1153, Clinical Epidemiology Applied to Rheumatic and Musculoskeletal Diseases, Université de Paris, Paris, France, <sup>c</sup> Department of Epidemiology and Public Health, University College London, London, United Kingdom, <sup>d</sup> Helsinki Institute of Life Sciences, University of Helsinki, Helsinki, Finland

\*Corresponding author. Address: Université de Paris, Inserm U1153 EpiAgeing, 10 Avenue de Verdun, 75010 Paris, France. Tel.: +33 (0)1 57 27 90 46. E-mail address: severine.sabia@inserm.fr (S. Sabia).

Supplemental digital content is available for this article. Direct URL citations appear in the printed text and are provided in the HTML and PDF versions of this article on the journal's Web site ([www.painjournalonline.com](http://www.painjournalonline.com)).

PAIN 162 (2021) 1578–1585

Copyright © 2020 The Author(s). Published by Wolters Kluwer Health, Inc. on behalf of the International Association for the Study of Pain. This is an open access article distributed under the terms of the Creative Commons Attribution-Non Commercial-No Derivatives License 4.0 (CCBY-NC-ND), where it is permissible to download and share the work provided it is properly cited. The work cannot be changed in any way or used commercially without permission from the journal.

<http://dx.doi.org/10.1097/j.pain.0000000000002080>

questionnaires on health behaviors, physical and mental well-being every 2 to 3 years, and clinical examinations including anthropometric measures and health-related parameters every 4 to 5 years until the most recent examination in 2015 to 2016. Participants' written, informed consent and research ethics approval are renewed at each contact; the most recent approval was from the National Health Service London—Harrow Research Ethics Committee, reference number 85/0938.

## 2.2. Pain

Pain was assessed using the “bodily pain scale” of the Short-Form 36 (SF-36) questionnaire on 9 occasions since its introduction to the study in 1991 to 1993 (in 1995, 1997-1999, 2001, 2002-2004, 2006, 2007-2009, 2012-2013, and 2015-2016). SF-36 assesses quality of life based on 8 scales<sup>35</sup> (vitality, physical functioning, bodily pain, general health, physical role functioning, emotional role functioning, social role functioning, and mental health) of which the bodily pain scale has been used for assessment of pain in previous studies.<sup>9</sup> The bodily pain scale is composed of 2 questions that assess pain intensity and pain interference “over the past 4 weeks.” Intensity measurement ranges from none (scored 100), very mild (scored 80), mild (scored 60), moderate (scored 40), severe (scored 20) to very severe (scored 0). Similarly, interference measurement ranges from not at all (scored 100), a little bit (scored 75), moderately (scored 50), quite a bit (scored 25) up to extremely (scored 0). Total pain is calculated by averaging the pain intensity and interference scores. To ease interpretation, the usual scoring was reversed such that higher scores on pain intensity, pain interference, and total pain indicated higher pain levels. The following 3 continuous pain measures were used: “total pain,” “pain intensity,” and “pain interference.” We also categorized these measures into 2 groups: “moderate to severe” and “mild or no” pain.

## 2.3. Incidence of dementia

Dementia was ascertained by linkage to 3 electronic health records: Hospital Episode Statistics, Mental Health Services Data Set, and mortality register up to the March 31, 2019, using a unique National Health Service identifier for each individual. Dementia cases were identified based on *ICD-10* codes F00, F01, F02, F03, F05.1, G30, G31.0, G31.1, and G31.8 (Table S1, <http://links.lww.com/PAIN/B185>); the date of diagnosis was set at the first record of disease in these databases. The sensitivity and specificity of dementia diagnosis in Hospital Episode Statistics data has been reported to be 78.0% and 92.0%.<sup>26</sup> Additional use of Mental Health Services Data Set in our study is likely to improve sensitivity of dementia diagnosis.<sup>38</sup>

## 2.4. Covariates

Sociodemographic factors included age, birth cohort (in 5 year bands), sex, ethnicity (white and nonwhite), education (less than primary school, lower secondary school, higher secondary school, university, and higher university degree), and marital status (married/cohabiting and others) at the time of pain evaluation. Questionnaire data, electronic health records, or clinical examinations over the follow-up were used for the following health conditions: (1) a multimorbidity index comprising coronary heart disease, stroke, chronic obstructive pulmonary disease, cancers (except nonmelanoma skin cancers), type 2 diabetes, osteoarthritis and rheumatoid arthritis, Parkinson

disease, and obesity (based on the body mass index  $\geq 30$  kg/m<sup>2</sup>); (2) depression based on electronic health records and use of antidepressants; and (3) pain medication based on use of analgesic and antirheumatic medications.

## 2.5. Statistical analysis

Characteristics of the study population as a function of dementia status at the end of the follow-up were compared using Pearson  $\chi^2$  and analysis of variance tests. Then 2 sets of analysis were performed, as described below.

### 2.5.1. Time-to-event analysis

We used Cox regression to assess the association between pain (separately for continuous and dichotomised scores) measured in 1991 to 1993 wave and incident dementia. These analyses were repeated with pain measurements drawn from waves 1997 to 1999, 2003 to 2004, 2008 to 2009, 2012 to 2013, and 2015 to 2016 to assess whether the length of the follow-up had an impact on observed associations. Participants were censored at dementia diagnosis, death, or March 31, 2019, whichever came first. Age was used as the timescale, and analysis was stratified on birth cohort and initially adjusted for sex, ethnicity, marital status, and education (model 1), then also for multimorbidity index, depression, and pain medication use at the time of pain measurement (model 2). Analyses were undertaken using pain as a continuous (10-point increase) and a dichotomous measure (“moderate to severe” pain vs “mild or no pain”).

### 2.5.2. Retrospective analysis of 27-year pain trajectories

This analysis aimed at comparing individual pain trajectories in dementia cases with noncases among the study population. We used mixed linear models with continuous pain variables as the dependent variables and a backward timescale, such that index date (date of dementia diagnosis for cases and the earliest of March 31, 2019, or date of death for noncases) was year 0, and pain measures were modeled from year 0 to year  $-27$ . Similar analyses were undertaken for dichotomized pain measures (“moderate to severe” vs “mild or no” pain) using mixed logistic models. Mixed models have the advantage to use all available data over the follow-up, handle differences in length of follow-up, and account for the correlation of the repeated measures on the same individual. Cubic spline regression curves based on mixed models suggested the use of time, time<sup>2</sup>, and time<sup>3</sup> terms (slope terms) to model nonlinear changes in pain trajectories (see Figures S1 and S2 in the supplement, available at <http://links.lww.com/PAIN/B185>). Random effects for the intercept and time allowed individual differences in the pain score at intercept (year 0) and change in pain over time. Analyses were adjusted for age at year 0, sex, education, ethnicity, marital status, dementia status, the terms for slope, interaction between these covariates and the terms for slope, and for birth cohort (model 1). The analyses were then also adjusted for pain medication use, multimorbidity index, and depression at the time of pain measurement (model 2). The beta associated with the dementia term yielded the difference in pain at year 0 between dementia cases and noncases. The interaction term between dementia and slope terms denoted whether change in pain over the previous 27 years differed by dementia status. The differences in pain between cases and noncases for each of the 27 years of the follow-up were estimated using the MARGINS commands in STATA. All analyses were

performed using STATA 15.1(64-bit). All resulting *P*-values were two-tailed, and a *P* value ≤ 0.05 was considered significant.

### 3. Results

#### 3.1. Study population characteristics

Of the 10308 participants at study inception (1985-1988), 9284 had participated in at least one of the waves between 1991 to 1993 and 2015 to 2016 among whom 238 participants had missing data on pain or covariates, leaving a study population of 9046 (2840 women and 6206 men) participants (flowchart in Figure S3 in the supplement, available at <http://links.lww.com/PAIN/B185>). Compared with excluded study participants, those included were more likely to be younger (included vs excluded participants mean age of 44.8 vs 45.7 years in 1985; *P* < 0.001), men (68.6% vs 54.6%; *P* < 0.001), white (90.7% vs 77.5%, *P* < 0.001), married/cohabiting (75.0% vs 67.1%; *P* < 0.001), and to have university education (27.1% vs 17.1%; *P* < 0.001) (Table S2 in the supplement, available at <http://links.lww.com/PAIN/B185>).

Amongst the 9046 study participants, 567 developed dementia at the mean age of 77.0 (SD = 5.9) years over the mean 25 years of follow-up, and 56.1% of these cases were diagnosed in the last 5 years of follow-up. **Table 1** shows that dementia cases were more likely to be older (mean age = 55.8 vs 50.3 years, *P* < 0.001), women (39.5% vs 30.9%, *P* < 0.001), less likely to be white (86.4% vs 91.0%, *P* < 0.001), to have university education (21.0% vs 27.5%, *P* < 0.001), and presented more often with chronic diseases (23.8% vs 15.9%, *P* < 0.001) and depression (4.8% vs 3.1%, *P* = 0.03). Dementia cases also had higher mean pain scores at first wave of pain measurement (19.4 vs 15.7 for total pain, *P* < 0.001) which became larger at the last wave of pain measurement (**Table 1**). On average, 6.9 pain measures were recorded in noncases and 5.8 in dementia cases. There was no evidence of sex differences in associations of pain with dementia (*P*<sub>interaction</sub> > 0.07) leading us to combine both sexes in the analysis.

#### 3.2. Association between pain and incident dementia

**Table 2** shows results from Cox regression for the associations of continuous and dichotomized pain score measures recorded at 1991 to 1993, 1997 to 1999, 2003 to 2004, 2007 to 2009, 2012 to 2013, and 2015 to 2016 waves with incident dementia, using a mean follow-up of 25.0, 19.6, 14.5, 10.0, 6.2, and 3.2 years, respectively. In analysis not adjusted for health conditions (model 1), the continuous pain interference was associated with increased hazard ratio (HR) of dementia, irrespective of the length of the follow-up (time between pain assessment and date of dementia diagnosis or end of follow-up for noncases). In the fully adjusted analyses (model 2), the association remained only when the mean follow-up was 10 years (HR per 10-point increase = 1.06; 95% CI [confidence intervals]: 1.01-1.11; *P* = 0.03) or less. The association between the dichotomized pain measures and dementia strengthened as the follow-up became shorter; when mean follow-up was 3.2 years, total pain (HR = 2.17; 95% CI: 1.40-3.38; *P* = 0.001), pain intensity (HR = 1.59; 95% CI: 1.01-2.50; *P* = 0.05), and interference (HR = 2.57; 95% CI: 1.61-4.09; *P* < 0.001) were all associated with dementia in fully adjusted analyses.

#### 3.3. Pain trajectories over 27 years of follow-up

Pain trajectories over the 27-year follow-up differed between dementia cases and noncases (**Figure 1** for fully adjusted model, and Figure S4 for model 1, <http://links.lww.com/PAIN/B185>) as

shown by significant interaction between dementia status and slope terms for total pain (*P*<sub>interaction</sub> = 0.004) and pain interference (*P*<sub>interaction</sub> < 0.001). In fully adjusted analyses (model 2, **Table 3**; corresponding results for Model 1 in Table S3, <http://links.lww.com/PAIN/B185>), dementia cases had higher total pain scores than noncases starting 16 years before diagnosis (difference = 1.4, 95% CI: 0.1-2.7; *P* = 0.04, corresponding to 7% of an SD of the total pain score). Difference in the pain score increased steadily to reach 5.5 (95% CI: 2.5-8.4; *P* < 0.001) at dementia diagnosis (year 0), corresponding to 28% of SD of the total pain score. These differences were driven primarily by the pain interference component, where differences between cases and noncases began at year -16 and increased to reach 8.0 (95% CI: 4.8-11.2; *P* < 0.001) at dementia diagnosis (year 0). Differences in pain intensity were confined to the 7 years before

**Table 1**  
Characteristics of participants as a function of dementia status at the end of follow-up\* (March 31, 2019).

	No dementia		Dementia		<i>P</i>
	N = 8479		N = 567		
	n	%	n	%	
Women	2616	30.9	224	39.5	<0.001
White	7713	91.0	490	86.4	<0.001
University-level education	2329	27.5	119	21.0	<0.001
	n	%	n	%	<i>P</i>
Characteristics at the first wave of pain measurement					
Married/cohabiting	6480	76.4	412	72.7	0.04
Depression	263	3.1	27	4.8	0.03
Pain medication use	559	6.6	48	8.5	0.08
At least 1 chronic disease†	1345	15.9	135	23.8	<0.001
Moderate to severe pain					
Total pain (score > 32.5)	1125	13.3	104	18.3	0.001
Pain intensity (score > 40)	1272	15.0	120	21.2	<0.001
Pain interference (score > 25)	686	8.1	74	13.1	<0.001
	Mean	SD	Mean	SD	<i>P</i>
Age, y	50.3	6.3	55.8	5.1	<0.001
Pain variables					
Total pain	15.7	19.3	19.4	22.2	<0.001
Pain intensity	21.9	23.4	25.9	25.5	<0.001
Pain interference	9.4	18.8	12.9	22.3	<0.001
	n	%	n	%	<i>P</i>
Characteristics at last wave of pain measurement					
Married/cohabiting	6017	71.0	363	64.0	<0.001
Depression	957	11.3	104	18.3	<0.001
Pain medication use	1453	17.1	116	20.5	0.04
At least 1 chronic disease†	4416	52.1	335	59.1	0.001
Moderate to severe pain					
Total pain (score > 32.5)	2119	25.0	228	40.2	<0.001
Pain intensity (score > 40)	2160	25.5	209	36.9	<0.001
Pain interference (score > 25)	1472	17.4	182	32.1	<0.001
	Mean	SD	Mean	SD	<i>P</i>
Age, y	68.9	8.6	70.9	8.1	<0.001
Pain variables					
Total pain	24.2	22.7	31.2	26.7	<0.001
Pain intensity	31.2	24.5	35.6	27.3	<0.001
Pain interference	17.3	24.1	26.7	29.1	<0.001

\* Among participants with data at least once over the follow-up period.

† Chronic diseases: coronary heart disease, stroke, chronic obstructive pulmonary disease, cancers, type 2 diabetes, osteoarthritis, rheumatoid arthritis, Parkinson disease, and obesity.

**Table 2**

**Association between pain (continuous [10-point increase] and dichotomous measures) and incident dementia: analysis using Cox regression.**

	Total pain					Pain intensity					Pain interference				
	N cases/ N total	Model 1*		Model 2†		N cases/ N total	Model 1*		Model 2†		N cases/N Total	Model 1*		Model 2†	
		HR	95% CI	HR	95% CI		HR	95% CI	HR	95% CI		HR	95% CI	HR	95% CI
Pain in 1991-1993 (mean follow-up = 25.0 y, SD = 4.7)															
Pain score	508/8281	1.05‡	1.01, 1.10	1.04	0.99, 1.09	508/8281	1.04‡	1.00, 1.08	1.03	0.99, 1.07	508/8281	1.05‡	1.00, 1.09	1.03	0.99, 1.08
Moderate to severe pain															
No	427/7240	1	Ref.	1	Ref.	410/7057	1	Ref.	1	Ref.	454/7665	1	Ref.	1	Ref.
Yes	81/1041	1.20	0.94, 1.52	1.12	0.87, 1.44	98/1224	1.25	0.99, 1.57	1.19	0.95, 1.51	54/616	1.29	0.97, 1.72	1.21	0.90, 1.63
Pain in 1997-1999 (mean follow-up = 19.6 y, SD = 3.8)															
Pain score	425/7026	1.07§	1.03, 1.12	1.05‡	1.00, 1.10	425/7026	1.06§	1.02, 1.10	1.04	0.99, 1.08	425/7026	1.07§	1.02, 1.11	1.04	0.99, 1.09
Moderate to severe pain															
No	334/5879	1	Ref.	1	Ref.	327/5814	1	Ref.	1	Ref.	357/6300	1	Ref.	1	Ref.
Yes	91/1147	1.23	0.97, 1.57	1.10	0.85, 1.42	98/1212	1.29‡	1.02, 1.63	1.17	0.91, 1.50	68/726	1.44§	1.11, 1.88	1.27	0.96, 1.69
Pain in 2002-2004 (mean follow-up = 14.5 y, SD = 2.9)															
Pain score	397/6752	1.04	0.99, 1.09	1.02	0.97, 1.07	397/6752	1.02	0.98, 1.07	1.00	0.96, 1.05	397/6752	1.05‡	1.01, 1.10	1.03	0.98, 1.08
Moderate to severe pain															
No	291/5434	1	Ref.	1	Ref.	291/5317	1	Ref.	1	Ref.	324/5939	1	Ref.	1	Ref.
Yes	106/1318	1.33‡	1.05, 1.67	1.19	0.93, 1.54	106/1435	1.20	0.95, 1.51	1.06	0.83, 1.37	73/813	1.36‡	1.05, 1.77	1.21	0.90, 1.62
Pain in 2007-2009 (mean follow-up = 10.0 y, SD = 2.0)															
Pain score	329/6588	1.06‡	1.01, 1.12	1.03	0.97, 1.09	329/6588	1.02	0.97, 1.07	0.99	0.93, 1.04	329/6588	1.08	1.03, 1.13	1.06‡	1.01, 1.11
Moderate to severe pain															
No	233/5223	1	Ref.	1	Ref.	240/5157	1	Ref.	1	Ref.	258/5742	1	Ref.	1	Ref.
Yes	96/1365	1.26	0.98, 1.61	1.07	0.82, 1.41	89/1431	1.09	0.85, 1.40	0.90	0.68, 1.19	71/846	1.42‡	1.08, 1.87	1.21	0.90, 1.63
Pain in 2012-2013 (Mean follow-up = 6.2 y, SD = 1.1)															
Pain score	233/6129	1.10§	1.04, 1.16	1.08‡	1.02, 1.16	233/6129	1.05	0.99, 1.11	1.03	0.97, 1.09	233/6129	1.12	1.06, 1.17	1.11	1.05, 1.18
Moderate to severe pain															
No	140/4751	1	Ref.	1	Ref.	149/4720	1	Ref.	1	Ref.	162/5224	1	Ref.	1	Ref.
Yes	93/1378	1.78	1.36, 2.35	1.72	1.28, 2.33	84/1409	1.51§	1.14, 1.99	1.41‡	1.04, 1.92	71/905	1.88	1.40, 2.52	1.80	1.30, 2.49
Pain in 2015-2016 (mean follow-up = 3.2 y, SD = 0.6)															
Pain score	100/5355	1.14§	1.05, 1.24	1.12‡	1.02, 1.24	100/5355	1.07	0.99, 1.17	1.05	0.96, 1.15	100/5355	1.15	1.07, 1.24	1.15	1.06, 1.25
Moderate to severe pain															
No	55/4082	1	Ref.	1	Ref.	61/4041	1	Ref.	1	Ref.	63/4521	1	Ref.	1	Ref.
Yes	45/1273	2.23	1.48, 3.36	2.17	1.40, 3.38	39/1314	1.72‡	1.13, 2.61	1.59‡	1.01, 2.50	37/834	2.62	1.71, 4.01	2.57	1.61, 4.09

\* Model 1: adjusted for age (as timescale), sex, birth cohort, education, ethnicity, and marital status.

† Model 2: model 1 + pain medication use, multimorbidity index, and depression assessed at the time of pain measurement.

‡ P < 0.05.

§ P < 0.01.

|| P < 0.001.

CI, confidence intervals; HR, hazard ratio.

**Table 3****Differences in the pain score between dementia cases and noncases in the 27 y preceding dementia diagnosis in fully adjusted analysis.**

Years before the index date	Total pain		P	Pain intensity		P	Pain interference		P
	Diff	95% CI		Diff	95% CI		Diff	95% CI	
-27	-0.2	-3.2, 2.9	0.90	0.8	-2.8, 4.4	0.66	-1.1	-4.3, 2.1	0.51
-26	0.1	-2.4, 2.5	0.97	0.9	-2.0, 3.8	0.53	-0.7	-3.3, 1.8	0.57
-25	0.3	-1.7, 2.3	0.79	1.0	-1.3, 3.4	0.39	-0.4	-2.5, 1.6	0.69
-24	0.5	-1.2, 2.2	0.60	1.1	-0.9, 3.1	0.27	-0.1	-1.9, 1.6	0.87
-23	0.6	-0.9, 2.2	0.42	1.2	-0.6, 3.0	0.19	0.1	-1.4, 1.6	0.90
-22	0.8	-0.7, 2.2	0.29	1.3	-0.4, 3.0	0.15	0.3	-1.1, 1.7	0.66
-21	0.9	-0.5, 2.3	0.21	1.3	-0.3, 3.0	0.12	0.5	-0.9, 1.9	0.46
-20	1.0	-0.4, 2.4	0.15	1.3	-0.3, 3.0	0.11	0.7	-0.7, 2.1	0.31
-19	1.1	-0.3, 2.5	0.11	1.4	-0.2, 3.0	0.10	0.9	-0.5, 2.3	0.21
-18	1.2	-0.1, 2.6	0.08	1.4	-0.2, 3.0	0.09	1.1	-0.3, 2.4	0.13
-17	1.3	-0.0, 2.7	0.06	1.4	-0.1, 3.0	0.08	1.2	-0.1, 2.6	0.07
-16	1.4	0.1, 2.7	0.04	1.4	-0.1, 2.9	0.07	1.4	0.1, 2.7	0.04
-15	1.5	0.2, 2.8	0.02	1.4	-0.1, 2.9	0.06	1.6	0.3, 2.9	0.02
-14	1.6	0.3, 2.9	0.02	1.4	-0.0, 2.9	0.06	1.8	0.5, 3.1	0.008
-13	1.7	0.4, 3.0	0.01	1.5	-0.0, 3.0	0.06	2.0	0.6, 3.3	0.004
-12	1.8	0.5, 3.2	0.007	1.5	-0.0, 3.0	0.06	2.2	0.8, 3.5	0.002
-11	2.0	0.6, 3.3	0.005	1.5	-0.1, 3.1	0.06	2.4	1.0, 3.8	0.001
-10	2.1	0.7, 3.5	0.003	1.5	-0.1, 3.1	0.06	2.7	1.3, 4.1	<0.001
-9	2.3	0.9, 3.8	0.002	1.6	-0.1, 3.2	0.06	3.0	1.5, 4.5	<0.001
-8	2.5	1.0, 4.0	0.001	1.6	0.0, 3.3	0.06	3.3	1.8, 4.9	<0.001
-7	2.8	1.3, 4.3	<0.001	1.7	0.0, 3.4	0.05	3.7	2.2, 5.3	<0.001
-6	3.0	1.5, 4.5	<0.001	1.8	0.1, 3.5	0.04	4.2	2.6, 5.7	<0.001
-5	3.3	1.8, 4.9	<0.001	1.9	0.1, 3.6	0.03	4.7	3.0, 6.3	<0.001
-4	3.7	2.0, 5.3	<0.001	2.0	0.2, 3.8	0.03	5.2	3.5, 6.9	<0.001
-3	4.0	2.3, 5.8	<0.001	2.1	0.2, 4.1	0.04	5.8	3.9, 7.6	<0.001
-2	4.5	2.4, 6.5	<0.001	2.3	0.0, 4.6	0.05	6.5	4.3, 8.6	<0.001
-1	4.9	2.5, 7.4	<0.001	2.5	-0.3, 5.3	0.08	7.2	4.6, 9.8	<0.001
0	5.5	2.5, 8.4	<0.001	2.7	-0.7, 6.1	0.12	8.0	4.8, 11.2	<0.001
Difference in trajectories	P = 0.004			P = 0.84			P < 0.001		

Estimates were extracted from linear mixed models adjusted for age at year 0, sex, education, ethnicity, marital status, dementia status, slope terms (time, time<sup>2</sup>, and time<sup>3</sup>), and interaction of these covariates with slope terms, birth cohort, pain medication use, multimorbidity index, and depression assessed at the time of pain measurement. CI, confidence intervals; Diff, difference.

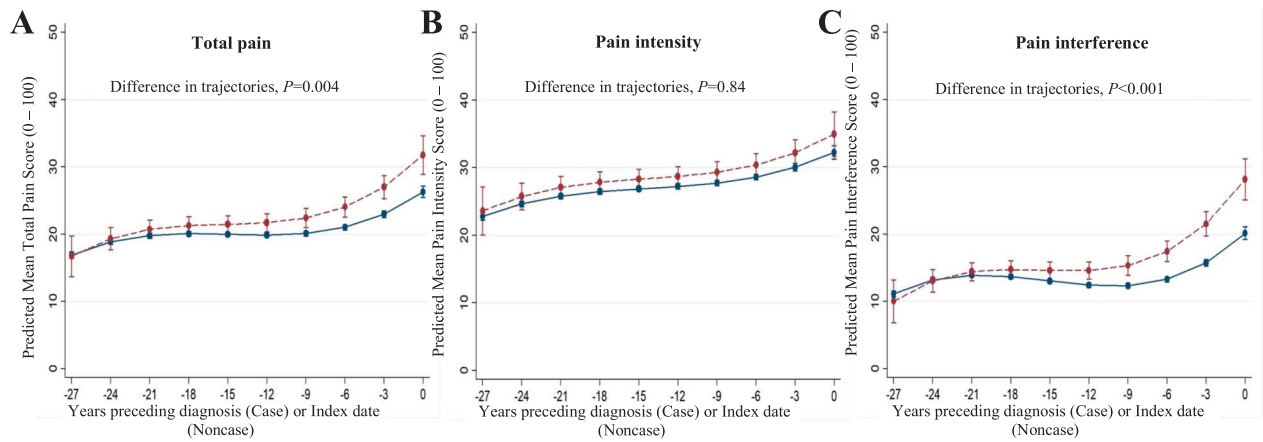
dementia diagnosis (**Table 3**). Analyses of 27-year trajectories of the probability of “moderate to severe” pain in fully adjusted analyses are shown in Figure S5, estimates shown in Table S4 in the supplement (available at <http://links.lww.com/PAIN/B185>). The difference in estimated probability at 2.5% (95% CI: 0.1%-4.8%;  $P = 0.04$ ) for total pain, 2.7% (95% CI: 0.0%-5.5%;  $P = 0.05$ ) for pain intensity, and 1.9% (95% CI: 0.1%-3.7%;  $P = 0.03$ ) for pain interference began at year -11, -6, and -12 years, respectively. At dementia diagnosis, these increased approximately 5 times for total pain and pain interference (Table S4, <http://links.lww.com/PAIN/B185>).

#### 4. Discussion

This longitudinal study with repeated pain measures collected over 27 years suggests steady progression in self-reported pain before

dementia diagnosis. Time-to-event analysis, where data on pain measures over the course of the study were used to assess the impact of the length of follow-up on the association between pain and incident dementia, showed the association to be evident only when the mean follow-up was 10 years or lower. The use of backward pain trajectories describes how small differences in pain scores between dementia cases and noncases become increasingly pronounced in the decade before diagnosis of dementia. Taken together, these results highlight the time-dependent association between pain and dementia; given the long preclinical phase of dementia, there is no strong evidence from our results that pain is a causal risk factor for dementia.

Several previous studies have examined the association between pain and cognitive outcomes, some<sup>5,18,20–22,28–30</sup> but not all studies<sup>20,32</sup> have suggested pain to be associated with impairment of cognitive domains such as attention, working



Years	Number of observations in the analysis from year -27 to year 0									
	-27 to -24	-24 to -18	-18 to -12	-12 to -6	-6 to 0	-27 to -24	-24 to -18	-18 to -12	-12 to -6	-6 to 0
Case N = 567	168	715	904	882	604	168	715	904	882	604
Noncase N = 8479	3947	17594	13599	12713	7669	3947	17594	13599	12713	7669

**Figure 1.** Twenty-seven-year trajectories of pain, using continuous measures, before dementia diagnosis. — Noncase; - - - case. Estimated from linear mixed models adjusted for age at year 0, sex, education, ethnicity, marital status, dementia status, slope terms (time, time<sup>2</sup>, and time<sup>3</sup>), interaction of these covariates with slope terms, birth cohort, pain medication use, multimorbidity index, and depression assessed at the time of pain measurement. Estimates came from Margins command in STATA. Higher scores correspond to higher pain.

memory, psychomotor speed, and executive function. Whitlock et al.<sup>37</sup> reported faster 12-year memory decline and increase in the dementia probability score among individuals with 2-year moderate to severe persistent pain. A systematic review and meta-analysis of longitudinal studies with a follow-up ranging 2.75 to 11.8 years found no association between persistent pain and incident cognitive decline/dementia, but stratification of studies based on follow-up period revealed an association when follow-up was shorter than 4.5 years.<sup>1</sup> Cognitive decline has also been shown to affect pain perception,<sup>16</sup> suggesting the need for closer attention to temporal framework in analysis of pain as a risk factor for dementia.

Pain<sup>9</sup> and chronic painful conditions such as fibromyalgia,<sup>27</sup> osteoarthritis,<sup>36</sup> and headache<sup>33</sup> have been found to be associated with risk of dementia. Few studies examine both the associations of pain intensity and pain interference, one such study with a 4-year mean follow-up found pain interference rather than intensity to be associated with dementia.<sup>9</sup> Other studies show pain interference, irrespective of the site<sup>39</sup> or nature of painful disease<sup>15</sup> to be associated with dementia risk. Our results also show pain interference rather than pain intensity to be the driver of observed associations between pain and dementia. Affective and cognitive domains of pain<sup>13</sup> are likely to determine subjective experience of pain interference.<sup>4</sup> These pain domains are affected early in dementia-related neurodegeneration,<sup>23</sup> underlying the emergence of pain interference in the preclinical phase of dementia. In agreement, the association between pain interference and incident dementia was observed earlier than the association between pain intensity and dementia in this study. Nonetheless, the association needs to be interpreted with caution because limitations in daily activities, irrespective of pain, emerge in the decade preceding diagnosis.<sup>31</sup> Some authors suggest pain interference and limitations in daily activities as distinct domains<sup>17</sup>; thus, increase in pain interference and limitations in daily activities might be 2 different features observed in the dementia preclinical period.

To the best of our knowledge, this is the first study to investigate the role of time in the association between pain and dementia. An important feature of this analysis is the construction of retrospective backward trajectories of pain spanning 27 years before dementia diagnosis allowing progressive change in pain to be tracked. Most previous studies used a mean follow-up of less than 5 years with pain assessed only at baseline, ignoring the time varying nature of pain. Our study, by combining findings from both backward trajectories and Cox regression models repeated at varying time points with mean follow-up ranging from 3 to 25 years, permits a more comprehensive analysis of the timeline of the association between pain and dementia in its preclinical phase.

There are several possible explanations for the observed progression of pain before dementia diagnosis. One, pain could be a causal risk factor for dementia. Chronic pain-induced chronic stress<sup>14</sup> through cortisol dysfunction<sup>14</sup> and neuroglial inflammation<sup>14,20</sup> can disrupt neuronal environment, accelerating neurodegenerative processes. However, differences in pain scores observed 16 years before dementia diagnoses between dementia cases and noncases in the backward trajectory models were negligible (around 1.4) when compared with the minimal clinically important difference of 4.9 suggested for rheumatoid arthritis.<sup>34</sup> Cox regression adjusted only for sociodemographic factors showed an association between pain interference and incidence of dementia, but further adjustment for health conditions attenuated associations except when the time between pain measures and dementia diagnosis was 10 years or less. These findings suggest that pain is not an independent, causal risk factor for dementia. Two, pain could be a preclinical symptom of dementia. Brain structures involved in motivational-affective and cognitive-evaluative pain processing are affected early in dementia-related neurodegeneration,<sup>12,23</sup> underpinning the longer-term association between pain interference and dementia. Three, pain and dementia may have common causes as both share pathophysiological mechanisms within the brain.<sup>3</sup>

Limitations of this study include lack of data on the characteristics, type, and location of pain. The specific chronic conditions that contributed to the association between pain and dementia could not be examined in sufficient detail. Our multi-morbidity index included a range of conditions to reflect overall disease burden; it is possible that some of these play a more important role than others. Finally, as dementia diagnosis was based on electronic health records, we did not have complete information on type or severity of dementia. This method might miss milder dementia, but it has the advantage of providing data on dementia for all participants recruited to the study rather than those who consent to face-to-face assessment of dementia status over the follow-up.

## 5. Conclusion

Dementia is a major challenge for social and health care because of aging of populations, highlighting the need to better understand the course of dementia, associated symptoms, and risk factors for effective preventive strategies. We found pain to increase rapidly in the preclinical period of dementia such that association of pain with dementia became stronger when assessed closer in time to dementia diagnosis. These findings suggest that pain is a prodromal symptom of dementia or both share common causal mechanisms rather than an important contributor to risk of dementia. Between pain intensity and pain interference, it was the latter that had a stronger association with dementia highlighting the need for better management of pain in older adults.

## Conflict of interest statement

The authors have no conflicts of interest to declare.

## Acknowledgements

The authors are grateful to the participants from civil service departments and their welfare, personnel, and establishment officers and all members of the Whitehall II study teams. The Whitehall II study has been supported by grants from the National Institute on Aging, National Institutes of Health (R01AG056477 and RF1AG062553); UK Medical Research Council (R024227 and S011676); and the British Heart Foundation (RG/16/11/32334). Mika Kivimäki is supported by the Medical Research Council (K013351, R024227, and S011676), UK, NordForsk, the Academy of Finland (311492), and Helsinki Institute of Life Science. Séverine Sabia is supported by the French National Research Agency (ANR-19-CE36-0004-01). Author contributions: S. Kumaradev, A. Singh-Manoux, and S. Sabia developed the hypothesis and study design. S. Kumaradev and A. Fayosse performed statistical analysis. S. Kumaradev and S. Sabia wrote the first and successive draft of the manuscript. All authors contributed to review of the manuscript and approved the final version to be published. A. Singh-Manoux and M. Kivimäki obtained funding. S. Kumaradev, A. Fayosse, and S. Sabia had full access to the data and took responsibility for the integrity of the data and the accuracy of the data analysis. Whitehall II data, protocols, and other metadata are available to the scientific community. Please refer to the Whitehall II data sharing policy at <https://www.ucl.ac.uk/epidemiology-health-care/research/epidemiology-and-public-health/research/whitehall-ii/data-sharing>. NHS London—Harrow Research Ethics Committee, reference number 85/0938.

## Appendix A. Supplemental digital content

Supplemental digital content associated with this article can be found online at <http://links.lww.com/PAIN/B185>.

### Article history:

Received 22 June 2020

Received in revised form 26 August 2020

Accepted 10 September 2020

Available online 23 September 2020

## References

- [1] Aguiar GP, Saraiva MD, Khazaal EJB, de Andrade DC, Jacob-Filho W, Suemoto CK. Persistent pain and cognitive decline in older adults: a systematic review and meta-analysis from longitudinal studies. *PAIN* 2020.
- [2] Apkarian AV, Hashmi JA, Baliki MN. Pain and the brain: specificity and plasticity of the brain in clinical chronic pain. *PAIN* 2011;152(3 suppl): S49–64.
- [3] Apkarian AV, Scholz J. Shared mechanisms between chronic pain and neurodegenerative disease. *Drug Discov Today Dis Mech* 2006;3: 319–26.
- [4] Auvray M, Myin E, Spence C. The sensory-discriminative and affective-motivational aspects of pain. *Neurosci Biobehav Rev* 2010;34:214–23.
- [5] Berryman C, Stanton TR, Jane Bowering K, Tabor A, McFarlane A, Lorimer Moseley G. Evidence for working memory deficits in chronic pain: a systematic review and meta-analysis. *PAIN* 2013;154:1181–96.
- [6] Bushnell MC, Case LK, Ceko M, Cotton VA, Gracely JL, Low LA, Pitcher MH, Villemure C. Effect of environment on the long-term consequences of chronic pain. *PAIN* 2015;156(suppl 1):S42–49.
- [7] Cauda F, Palermo S, Costa T, Torta R, Duca S, Vercelli U, Geminiani G, Torta DM. Gray matter alterations in chronic pain: a network-oriented meta-analytic approach. *Neuroimage Clin* 2014;4:676–86.
- [8] de Tommaso M, Arendt-Nielsen L, Defrin R, Kunz M, Pickering G, Valeriani M. Pain in neurodegenerative disease: current knowledge and future perspectives. *Behav Neurol* 2016;2016:7576292.
- [9] Ezzati A, Wang C, Katz MJ, Derby CA, Zammit AR, Zimmerman ME, Pavlovic JM, Sliwinski MJ, Lipton RB. The temporal relationship between pain intensity and pain interference and incident dementia. *Curr Alzheimer Res* 2019;16:109–15.
- [10] Fine PG. Long-term consequences of chronic pain: mounting evidence for pain as a neurological disease and parallels with other chronic disease states. *Pain Med* 2011;12:996–1004.
- [11] Fritz HC, McAuley JH, Wittfeld K, Hegenscheid K, Schmidt CO, Langner S, Lotze M. Chronic back pain is associated with decreased prefrontal and anterior insular gray matter: results from a population-based cohort study. *J Pain* 2016;17:111–18.
- [12] Gagliese L, Gauthier LR, Narain N, Freedman T. Pain, aging and dementia: towards a biopsychosocial model. *Prog Neuropsychopharmacol Biol Psychiatry* 2018;87:207–15.
- [13] Garcia-Larrea L, Peyron R. Pain matrices and neuropathic pain matrices: a review. *PAIN* 2013;154(suppl 1):S29–43.
- [14] Hannibal KE, Bishop MD. Chronic stress, cortisol dysfunction, and pain: a psychoneuroendocrine rationale for stress management in pain rehabilitation. *Phys Ther* 2014;94:1816–25.
- [15] Ikram M, Innes K, Sambamoorthi U. Association of osteoarthritis and pain with Alzheimer's Diseases and Related Dementias among older adults in the United States. *Osteoarthritis Cartilage* 2019;27:1470–80.
- [16] James RJE, Ferguson E. The dynamic relationship between pain, depression and cognitive function in a sample of newly diagnosed arthritic adults: a cross-lagged panel model. *Psychol Med* 2019:1–9.
- [17] Karayannis NV, Sturgeon JA, Chih-Kao M, Cooley C, Mackey SC. Pain interference and physical function demonstrate poor longitudinal association in people living with pain: a PROMIS investigation. *PAIN* 2017;158:1063–8.
- [18] Lee DM, Pendleton N, Tajar A, O'Neill TW, O'Connor DB, Bartfai G, Boonen S, Casanueva FF, Finn JD, Forti G, Giwercman A, Han TS, Huhtaniemi IT, Kula K, Lean ME, Punab M, Silman AJ, Vanderschueren D, Moseley CM, Wu FC, McBeth J, Group ES. Chronic widespread pain is associated with slower cognitive processing speed in middle-aged and older European men. *PAIN* 2010;151:30–6.
- [19] Melzack R, Katz J. Pain. *Wiley Interdiscip Rev Cogn Sci* 2013;4:1–15.
- [20] Moriarty O, McGuire BE, Finn DP. The effect of pain on cognitive function: a review of clinical and preclinical research. *Prog Neurobiol* 2011;93: 385–404.

- [21] Murata S, Nakakubo S, Isa T, Tsuboi Y, Torizawa K, Fukuta A, Okumura M, Matsuda N, Ono R. Effect of pain severity on executive function decline in community-dwelling older adults. *Gerontol Geriatr Med* 2018;4:2333721418811490.
- [22] Murata S, Sawa R, Nakatsu N, Saito T, Sugimoto T, Nakamura R, Mitsu S, Ueda Y, Ono R. Association between chronic musculoskeletal pain and executive function in community-dwelling older adults. *Eur J Pain* 2017;21:1717–22.
- [23] Scherder EJ, Sergeant JA, Swaab DF. Pain processing in dementia and its relation to neuropathology. *Lancet Neurol* 2003;2:677–86.
- [24] Silverberg N, Elliott C, Ryan L, Masliah E, Hodes R. NIA commentary on the NIA-AA Research Framework: towards a biological definition of Alzheimer's disease. *Alzheimers Dement* 2018;14:576–8.
- [25] Smallwood RF, Laird AR, Ramage AE, Parkinson AL, Lewis J, Clauw DJ, Williams DA, Schmidt-Wilcke T, Farrell MJ, Eickhoff SB, Robin DA. Structural brain anomalies and chronic pain: a quantitative meta-analysis of gray matter volume. *J Pain* 2013;14:663–75.
- [26] Sommerlad A, Perera G, Singh-Manoux A, Lewis G, Stewart R, Livingston G. Accuracy of general hospital dementia diagnoses in England: sensitivity, specificity, and predictors of diagnostic accuracy 2008–2016. *Alzheimers Dement* 2018;14:933–43.
- [27] Tzeng NS, Chung CH, Liu FC, Chiu YH, Chang HA, Yeh CB, Huang SY, Lu RB, Yeh HW, Kao YC, Chiang WS, Tsao CH, Wu YF, Chou YC, Lin FH, Chien WC. Fibromyalgia and risk of dementia-A nationwide, population-based, cohort study. *Am J Med Sci* 2018;355:153–61.
- [28] van der Leeuw G, Ayers E, Blankenstein AH, van der Horst HE, Verghese J. The association between pain and prevalent and incident motoric cognitive risk syndrome in older adults. *Arch Gerontol Geriatr* 2019;87:103991.
- [29] van der Leeuw G, Ayers E, Leveille SG, Blankenstein AH, van der Horst HE, Verghese J. The effect of pain on major cognitive impairment in older adults. *J Pain* 2018;19:1435–44.
- [30] van der Leeuw G, Eggermont LH, Shi L, Milberg WP, Gross AL, Hausdorff JM, Bean JF, Leveille SG. Pain and cognitive function among older adults living in the community. *J Gerontol A Biol Sci Med Sci* 2016;71:398–405.
- [31] Verlinden VJA, van der Geest JN, de Bruijn R, Hofman A, Koudstaal PJ, Ikram MA. Trajectories of decline in cognition and daily functioning in preclinical dementia. *Alzheimers Dement* 2016;12:144–53.
- [32] Veronese N, Koyanagi A, Solmi M, Thompson T, Maggi S, Schofield P, Mueller C, Gale CR, Cooper C, Stubbs B. Pain is not associated with cognitive decline in older adults: a four-year longitudinal study. *Maturitas* 2018;115:92–6.
- [33] Wang J, Xu W, Sun S, Yu S, Fan L. Headache disorder and the risk of dementia: a systematic review and meta-analysis of cohort studies. *J Headache Pain* 2018;19:95.
- [34] Ward MM, Guthrie LC, Alba MI. Clinically important changes in short form 36 health survey scales for use in rheumatoid arthritis clinical trials: the impact of low responsiveness. *Arthritis Care Res (Hoboken)* 2014;66:1783–9.
- [35] Ware JE, Snow KK, Kosinski M, Gandek B. SF36 health survey: manual and interpretation guide. Vol. 30. Boston: The Health Institute, New England Medical Center, 1993.
- [36] Weber A, Mak SH, Berenbaum F, Sellam J, Zheng YP, Han Y, Wen C. Association between osteoarthritis and increased risk of dementia: a systemic review and meta-analysis. *Medicine (Baltimore)* 2019;98:e14355.
- [37] Whitlock EL, Diaz-Ramirez LG, Glymour MM, Boscardin WJ, Covinsky KE, Smith AK. Association between persistent pain and memory decline and dementia in a longitudinal cohort of elders. *JAMA Intern Med* 2017;177:1146–53.
- [38] Wilkinson T, Ly A, Schnier C, Rannikmae K, Bush K, Brayne C, Quinn TJ, Sudlow CLM, UKBNO Group, Dementias Platform UK. Identifying dementia cases with routinely collected health data: a systematic review. *Alzheimers Dement* 2018;14:1038–51.
- [39] Yamada K, Kubota Y, Tabuchi T, Shirai K, Iso H, Kondo N, Kondo K. A prospective study of knee pain, low back pain, and risk of dementia: the JAGES project. *Sci Rep* 2019;9:10690.