



Elevated cerebrospinal fluid glucose levels and diabetes mellitus are associated with activation of the neurotoxic polyol pathway

Celien Tigchelaar¹ · Mark L. van Zuylen² · Abraham H. Hulst^{2,3} · Benedikt Preckel² · André P. van Beek⁴ · Ido P. Kema⁵ · Jeroen Hermanides² · Anthony R. Absalom¹

Received: 15 October 2021 / Accepted: 17 January 2022 / Published online: 5 April 2022
© The Author(s) 2022

Abstract

Aims/hypothesis During hyperglycaemia, some glucose bypasses glycolysis and is metabolised via the potentially neurotoxic polyol pathway, in which glucose is metabolised to sorbitol and fructose. Increased polyol concentrations have been demonstrated in the cerebrospinal fluid (CSF) of neurological patients with and without diabetes mellitus. However, polyol levels in patients without evident neurological abnormalities have not been investigated so far. The aim of this study was to determine CSF polyol concentrations in patients without major neurological disease with normal or elevated CSF glucose concentrations.

Methods This observational cohort study used CSF and plasma analyses, as well as clinical data, from 30 participants of the Anaesthetic Biobank of Cerebrospinal Fluid study. Biomaterial was collected from adult patients scheduled for elective surgery under spinal anaesthesia. CSF polyol concentrations were measured by GC/flame ionisation detector in ten patients with normal CSF glucose levels (group 1), ten patients with elevated CSF glucose levels (group 2) and ten patients with elevated CSF glucose levels and type 2 diabetes (group 3). We compared the concentrations of plasma glucose, CSF glucose, sorbitol and fructose, and CSF polyol/glucose ratios between the three groups, and determined the correlation between plasma glucose levels and CSF glucose, sorbitol and fructose levels.

Results Groups 2 and 3 had significantly higher CSF fructose levels compared with group 1 ($p=0.036$ and $p<0.001$, respectively). Group 3 showed significant differences compared with groups 1 and 2 for CSF sorbitol ($p<0.001$ and 0.036 , respectively). Moreover, patients with diabetes had a significantly higher CSF sorbitol/glucose ratio compared with patients without diabetes. There was a strong positive correlation between plasma glucose and CSF glucose, sorbitol and fructose. Finally, age, sex, CSF/plasma albumin ratio and preoperative cognitive function scores were significantly correlated with plasma glucose and CSF glucose, sorbitol and fructose levels.

Conclusions/interpretation Hyperglycaemia causes a proportional increase in polyol concentrations in CSF of patients without major neurological disease. Furthermore, this study provides the first indication of upregulation of the cerebral polyol pathway in patients with diabetes without evident neurological abnormalities.

Keywords Cerebrospinal fluid · Diabetes mellitus · Fructose · Hyperglycaemia · Neurocognitive function · Polyol pathway · Sorbitol

Celien Tigchelaar and Mark L. van Zuylen contributed equally to this work. Jeroen Hermanides and Anthony R. Absalom contributed equally as senior authors.

✉ Celien Tigchelaar
c.tigchelaar@umcg.nl

¹ Department of Anaesthesiology, University Medical Center Groningen, University of Groningen, Groningen, the Netherlands

² Department of Anaesthesiology, Amsterdam UMC – Location AMC, University of Amsterdam, Amsterdam, the Netherlands

³ Department of Intensive Care, Royal Melbourne Hospital, University of Melbourne, Melbourne, VIC, Australia

⁴ Department of Endocrinology, University Medical Center Groningen, University of Groningen, Groningen, the Netherlands

⁵ Department of Laboratory Medicine, University Medical Center Groningen, University of Groningen, Groningen, the Netherlands

Research in context

What is already known about this subject?

- During hyperglycaemia, some glucose bypasses glycolysis and is metabolised via the potentially neurotoxic polyol pathway into sorbitol and fructose
- Increased cerebrospinal fluid (CSF) polyol concentrations have been demonstrated in neurological patients with and without diabetes mellitus
- Polyol levels in patients without evident neurological abnormalities have not been investigated so far

What is the key question?

- How are CSF glucose concentrations and diabetes correlated with CSF polyol concentrations in patients without major neurological disease?

What are the new findings?

- Hyperglycaemia caused a proportional increase in polyol concentrations in CSF of patients without neurological abnormalities
- Patients with diabetes had a significantly higher CSF sorbitol level and CSF sorbitol/glucose ratio compared with patients without diabetes

How might this impact on clinical practice in the foreseeable future?

- This study showed a first indication for upregulation of the cerebral polyol pathway in patients with diabetes without evident neurological abnormalities; future studies could investigate whether polyols are associated with clinically relevant outcomes, and whether reducing glucose conversion to polyols reduces such outcomes

Abbreviations

ABC	Anaesthetic Biobank of Cerebrospinal Fluid
ASA	American Society of Anesthesiology
CSF	Cerebrospinal fluid
MoCA	Montreal Cognitive Assessment
Q_{alb}	CSF/plasma quotient of albumin

Introduction

Under normal physiological conditions, the glycolytic hexokinase pathway metabolises cerebral glucose via brain-specific hexokinase isoforms [1]. However, during hyperglycaemia, some glucose bypasses glycolysis and is isomerised to polyols via the polyol pathway [2], in which aldose reductase first metabolises glucose to the polyol sorbitol, and subsequently sorbitol dehydrogenase oxidises sorbitol to fructose (Fig. 1).

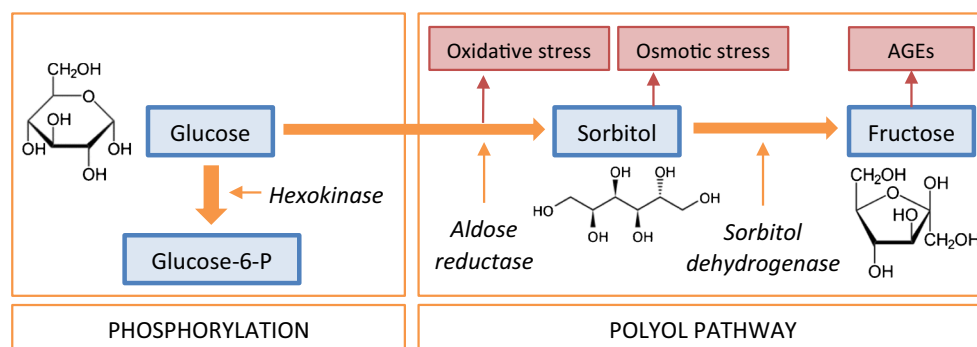
Polyols are cyto- and neurotoxic [3, 4], and excessive polyol concentrations may lead to nephro- [5], retino- [6] and polyneuropathy [7], with sorbitol and fructose playing crucial roles. Sorbitol has an osmotic potential because of limited permeability through cell membranes, and reduces the ability of cells to protect themselves from the influence of reactive oxygen species [3]. Fructose can damage proteins through irreversible glycation and formation of

AGEs [4]. Polyols in cerebrospinal fluid (CSF), through the formation of AGEs, non-enzymatic glycation of myelin or oxidative damage/stress, may also play a role in the development of white matter lesions and cognitive impairment [8–10]. Historically, the existence of the polyol pathway may have provided an evolutionary survival advantage, as fructose increases the storage of fat and glycogen, which may later be used to provide energy and water [11]. Fructose also causes sodium retention, and consequently higher blood pressure, which is an advantage in case of dehydration or salt deficiency [11]. However, modern-day non-physiological problems and processes that cause acute or chronic hyperglycaemia, such as diabetes mellitus, surgery [12–14] or critical illness [15], may lead to more deleterious activation of the polyol pathway.

Previous research has demonstrated low CSF polyol concentrations in normoglycaemic healthy individuals [16] and pregnant women [17], and increased CSF polyol levels in patients with neurological disorders, both with and without diabetes [18–20]. Moreover, continuous intravenous glucose infusion induces fructose formation in the brain during periods of hyperglycaemia [21].

Given the likelihood of saturation of the hexokinase pathway under supraphysiological glucose concentrations, we hypothesised that hyperglycaemia causes a proportional increase in CSF glucose, sorbitol and fructose concentrations,

Fig. 1 Glucose metabolism and the polyol pathway. Glucose-6-P, glucose 6-phosphate



and in ratios of CSF fructose and sorbitol to CSF glucose. However, polyol concentrations and CSF polyol/glucose ratios under varying glycaemic conditions in patients without evident neurological abnormalities have not been investigated to date. Therefore, we aimed to study CSF fructose and sorbitol concentrations and ratios of CSF fructose and sorbitol to CSF glucose in patient groups with either normal or elevated CSF glucose concentrations.

Methods

Study design and ethics For this study, we used biomaterial and data from patients enrolled in a prospective cohort study, the Anaesthetic Biobank of Cerebrospinal Fluid (ABC) study. Plasma, CSF and clinical data were obtained from a subset of participants of the ABC repository, which was designed to collect and store CSF from patients without major neurological disease for future neuroscientific research. Patients aged 18 years or older, scheduled for elective surgery under spinal anaesthesia, were eligible for inclusion. More extensive details of the study design, patient inclusion, and data and biomaterial collection are described elsewhere [22]. The ABC study was approved by the Medical Ethical Committee of the University Medical Center Groningen (UMCG) (registration number 2016–174) and written informed consent was obtained from all participants. The study was performed according to the Declaration of Helsinki as revised in 2013, and the trial was registered with trialregister.nl (number NL9356). All participants signed an informed consent form. Performance, recording, data analysis and reporting were conducted according to the Strengthening the Reporting of Observational Studies in Epidemiology (STROBE) statement for reporting observational studies.

Study population and inclusion criteria From the 487 patients enrolled in the ABC study between October 2016 and November 2020, we selected 30 patients for this sub-study. We first excluded, from the ABC study cohort, patients with a CSF erythrocyte count $>500 \times 10^6/l$ (indicating CSF blood contamination [23]), patients with a known

neurometabolic disorder (e.g. Parkinson's disease, multiple sclerosis, Alzheimer's disease, phenylketonuria, mitochondrial disorders), or those patients with an undetermined plasma or CSF albumin concentration. We then selected three groups of patients on the basis of their CSF glucose concentrations. For group 1 (control group), we selected ten patients at random whose CSF glucose concentration spanned the spectrum of concentrations considered to be normal (2.2–4.4 mmol/l). Among all patients with elevated CSF glucose concentrations (>4.4 mmol/l), we identified those without a diagnosis of diabetes and those with a diagnosis of type 2 diabetes, and ranked each group according to their CSF glucose concentrations. For these two groups, we selected the ten patients with the highest CSF glucose concentrations.

Material collection and measurements Spinal puncture and collection of biomaterials were performed according to standardised procedures [22]. CSF (10 ml) was collected into five consecutive 2 ml syringes during the spinal puncture prior to intrathecal local anaesthetic injection. The first 2 ml syringe was used for routine analyses, including albumin, total protein, glucose, leucocyte and erythrocyte count. The remaining CSF was centrifuged (1000 g, 10 min, 4°C) and stored at -80°C . Blood (20.5 ml) was collected during intravenous cannulation prior to surgery. Part of the blood (10.5 ml) was used for routine analyses (albumin, total protein, glucose and leucocyte count); the remaining blood was centrifuged (2000 g, 10 min, 4°C) and stored at -80°C for future analysis.

CSF sorbitol and fructose concentrations were measured by the Core Facility Metabolomics of the Amsterdam University Medical Center (Amsterdam UMC) in 300 μl CSF from the second 2 ml fraction by GC/flame ionisation detector, as previously described for plasma [24]. The interassay coefficient of variation was 5.7% for sorbitol and 6.1% for fructose. The limit of detection and limit of quantification were 5 $\mu\text{mol/l}$ for both compounds. First, a test sample from four patients was analysed for plasma and CSF sorbitol and fructose to assess the validity of the laboratory

Table 1 Patient characteristics

Characteristic	All patients (<i>n</i> =30)	Group 1 (<i>n</i> =10)	Group 2 (<i>n</i> =10)	Group 3 (<i>n</i> =10)	<i>p</i> value
Sex, female (%)	16 (53)	9 (90)	5 (50)	2 (20)	0.009**
Age (years)	61 [53–70]; 20–78	51 [25–55]; 20–67	65 [57–75]; 46–78	68 [63–73]; 58–78	0.001**
BMI (kg/m ²)	30 [25–34]; 19–40	29 [23–32]; 20–34	32 [23–37]; 19–40	32 [27–37]; 21–40	0.345
ASA classification (%)					0.003**
ASA I	8 (27)	7 (70)	1 (10)	0 (0)	
ASA II	17 (57)	3 (30)	6 (60)	8 (80)	
ASA III	5 (17)	0 (0)	3 (30)	2 (20)	
Lifestyle factors					
Smoking (<i>n</i> =28) (%)					0.833
Never	15 (53)	6 (67)	5 (56)	4 (40)	
Current	3 (11)	1 (11)	1 (11)	1 (10)	
Former	10 (36)	2 (22)	3 (33)	5 (50)	
Alcohol use, yes (<i>n</i> =26) (%)	17 (65)	6 (75) (<i>n</i> =8)	4 (50) (<i>n</i> =8)	7 (70) (<i>n</i> =10)	0.669
Surgery type (%)					
Orthopaedic	20 (67)	6 (60)	6 (60)	8 (80)	
Urological	4 (13)	0 (0)	4 (40)	0 (0)	
Surgical	4 (13)	2 (20)	0 (0)	2 (20)	
Gynaecological	2 (7)	2 (20)	0 (0)	0 (0)	
MoCA score (<i>n</i> =23)	27 [23–29]; 16–30	29 [28–30]; 26–30 (<i>n</i> =10)	24 [18–26]; 18–27 (<i>n</i> =6)	25 [21–28]; 16–30 (<i>n</i> =7)	0.003**
Q_{alb} ($\times 10^{-3}$)	5.3 [4.1–7.6]; 2.0–15.2	4.1 [3.3–4.6]; 2.0–5.4	4.9 [4.2–5.8]; 3.8–10.6	8.1 [6.1–10.6]; 4.4–15.2	<0.001***
Plasma creatinine (μ mol/l) (<i>n</i> =29)	71 [60–88]; 39–132	69 [59–77]; 54–87	80 [59–116]; 39–132 (<i>n</i> =9)	77 [59–95]; 58–129	0.464

Data are median [IQR] with range, or frequency (%)

Group 1, control group; group 2, elevated CSF glucose; group 3, type 2 diabetes

p*<0.01; *p*<0.001 level (two-tailed)

analysis. Second, sorbitol and fructose concentrations in CSF were measured in all patients.

Creatinine assays (as indicator of renal function) were later performed on an aliquot of stored plasma by the Department of Clinical Chemistry at Uppsala University, Sweden.

We obtained relevant demographic data, medication use and medical history from patient records. As part of the ABC study procedures, the Montreal Cognitive Assessment (MoCA), a brief cognitive screening tool for mild cognitive impairment, was used to assess cognitive function preoperatively, if logistically possible.

Outcome First, between-group differences in baseline- and intraoperative characteristics and routine laboratory analyses (e.g. albumin and creatinine) were determined. As primary outcome measures, we determined the concentrations of plasma glucose, CSF glucose, sorbitol and fructose for all groups, and calculated the CSF polyol/glucose ratios (CSF sorbitol/CSF glucose and CSF fructose/CSF glucose). We then determined between-group differences in plasma glucose, CSF glucose, sorbitol, fructose, and CSF polyol/glucose ratios for

groups 1, 2 and 3. The secondary outcomes were the correlations between plasma glucose levels and CSF glucose, sorbitol and fructose levels, as well as between cognitive function and CSF glucose, sorbitol and fructose. In addition, the correlation between the CSF/plasma quotient of albumin (Q_{alb} ratio) and plasma glucose, CSF glucose, CSF sorbitol and CSF fructose was analysed. The Q_{alb} is an indicator of blood–CSF barrier permeability, and was calculated by dividing the concentration of albumin in CSF by the concentration of albumin in blood, $\times 1000$. Last, age was correlated with plasma glucose, CSF glucose, CSF sorbitol and CSF fructose, and with CSF sorbitol/glucose and fructose/glucose ratios, and we also determined whether differences existed between men and women for these analytes.

Sample size We based our sample size calculation on the expected between-group difference in the plasma concentration of sorbitol. Hwang et al [17] reported a mean plasma sorbitol concentration of 0.17 with an SD of 0.02 in a study of 25 pregnant women with and without diabetes. To detect a between-group difference of 0.03 with an SD of 0.02 using a

two-sided α of 0.025 (to correct for two comparisons in three groups), it is necessary to include at least ten patients in each group. Therefore, we included a total of 30 patients in this study.

Statistical analysis Analyses were performed using SPSS statistics software (version 23.0; IBM NY, USA). Data are expressed as mean \pm SD and as median (IQR), when appropriate, plus range (minimum value – maximum value). We assessed for normality by visual inspection of the frequency distribution, the P–P plot and Q–Q plot, and used the Shapiro–Wilk test when in doubt. Discrete data are displayed by category frequencies and percentages. Either a Pearson or Spearman rank correlation was performed when examining the relationship between two continuous variables. For comparisons between groups, the Mann–Whitney U test, Fisher’s exact test, the χ^2 test, the Fisher–Freeman–Halton test or the Kruskal–Wallis H test were used when appropriate. If the Kruskal–Wallis H test was significant, Dunn’s pairwise tests were performed for the three pairs of groups. For pairwise comparisons between groups, significance values were adjusted by the Bonferroni correction for multiple tests. A p value <0.05 (for a two-tailed test) was considered statistically significant.

Results

Study cohort and patient characteristics Patient characteristics are shown in Table 1. The median age of the total group was 61 years (range 20–78) and 53% were female. Age differed significantly between the three study groups (significant between groups 1 and 2 [$p=0.012$] and groups 1 and 3 [$p=0.002$]), and sex differed significantly between groups 1

and 3 ($p=0.015$). BMI ranged from 19 to 40 kg/m², with a median of 30 for the total sample. There was a significant difference in the American Society of Anesthesiology (ASA) physical status [25] between the groups. MoCA test scores ranged from 16 to 30 points ($n = 23$). Only group 1 had a median MoCA score in the normal range (≥ 26 points, $n = 10$), groups 2 ($n = 6$) and 3 ($n = 7$) had a significantly lower MoCA score ($p=0.006$ and $p=0.039$, respectively). Median Q_{alb} values differed significantly between groups 1 and 3 ($p<0.001$), but were within the normal range in all groups (Table 1). Finally, plasma creatinine was not different between groups (data not shown).

Of the 30 patients included, 93% had at least one comorbid condition (other than the reason for surgery), and 90% were using at least one medication. Twenty-six of the patients had not suffered from an active central nervous system disorder in the 12 months preceding the collection of biomaterials. The four patients who did have a central nervous system disorder in the 12 months before biomaterial collection included one patient from group 1 (depression), two patients from group 2 (epilepsy; small right thalamic infarction >6 months prior with no current medication use), and one patient from group 3 (facial nerve schwannoma). One patient from group 1, three patients from group 2, and no patients from group 3 used corticosteroids. All patients in group 3 used glucose-lowering medication. Five patients were on insulin therapy, of whom three used a combination of rapid-acting and long-acting insulin, one patient used rapid-acting and intermediate-acting insulin, and one patient used rapid-acting insulin together with ultra-long-acting insulin. Four patients were on oral glucose-lowering drugs, including biguanides, sulfonyl-urea derivatives and dipeptidyl peptidase 4 inhibitors. One patient used a combination of rapid-acting and long-acting insulin and a biguanide.

Table 2 Results of biochemical analyses of CSF and plasma

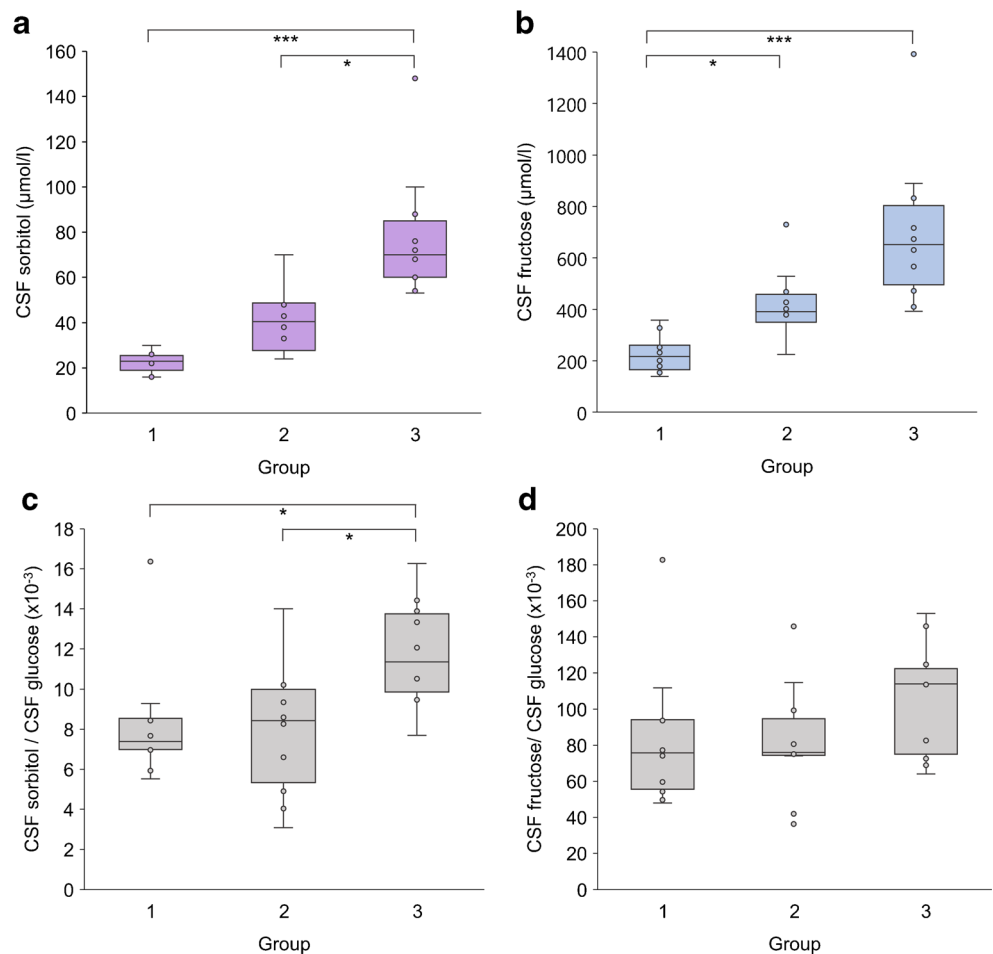
	All patients ($n=30$)	Group 1 ($n=10$)	Group 2 ($n=10$)	Group 3 ($n=10$)	p value
Plasma glucose (mmol/l) ($n=29$)	7.6 [5.5–10.9]; 4.4–16.8	5.1 [4.9–5.5]; 4.4–5.7 ($n=9$)	7.7 [6.4–8.2]; 5.5–11.1	11.7 [10.0–14.2]; 7.0–16.8	<0.001 ***
CSF glucose (mmol/l)	5.0 [3.3–6.1]; 1.1–9.1	3.1 [2.8–3.3]; 1.1–3.5	5.0 [4.7–5.8]; 4.6–7.8	6.2 [5.7–7.4]; 5.4–9.1	<0.001 ***
CSF sorbitol ($\mu\text{mol/l}$)	41 [24–62]; 16–148	23 [18–26]; 16–30	41 [26–49]; 24–70	70 [53–91]; 53–148	<0.001 ***
CSF fructose ($\mu\text{mol/l}$)	387 [247–582]; 139–1392	217 [159–280]; 139–358	391 [338–482]; 225–729	652 [456–847]; 393–1392	<0.001 ***
CSF sorbitol/CSF glucose ($\times 10^{-3}$)	8.9 [7.0–11.0]; 3.1–16.4	7.4 [6.7–8.8]; 5.5–16.4 ($n=9$)	8.4 [4.7–10.3]; 3.1–14.0	11.3 [9.6–14.0]; 7.7–16.3	0.009**
CSF fructose / CSF glucose ($\times 10^{-3}$)	79 [68–115]; 36–183	75 [53–99]; 48–183	76 [66–103]; 36–146	114 [72–130]; 64–153	0.224

Data are median [IQR] with range, or frequency (%)

Group 1, control group; group 2, elevated CSF glucose; group 3, type 2 diabetes

** $p<0.01$; *** $p<0.001$ level (two-tailed)

Fig. 2 Cerebrospinal fluid (CSF) concentrations of polyols. Concentrations of CSF sorbitol (a), concentrations of CSF fructose (b), CSF sorbitol/CSF glucose ratio (c) and CSF fructose/CSF glucose ratio (d) for group 1 (control) ($n = 10$), group 2 (elevated CSF glucose) ($n = 10$) and group 3 (diabetes mellitus) ($n = 10$). * $p < 0.05$, ** $p < 0.01$ and *** $p < 0.001$



Primary outcome Plasma glucose and CSF glucose, sorbitol and fructose values are shown in Table 2. There was a broad range for plasma glucose concentrations (4.4–16.8 mmol/l) and CSF glucose concentrations (1.1–9.1 mmol/l) when all patients were grouped together. A significant difference was observed between the three groups for plasma glucose and CSF glucose, sorbitol and fructose (all $p < 0.001$). Pairwise comparisons between groups showed significant differences for plasma glucose levels between groups 1 and

2 ($p = 0.030$) and groups 1 and 3 ($p < 0.001$). CSF glucose concentrations differed significantly between groups 1 and 2 ($p = 0.009$) and groups 1 and 3 ($p < 0.001$). Group 3 showed a significant difference compared with group 1 for both CSF sorbitol ($p < 0.001$) and fructose levels ($p < 0.001$), and also showed a significant difference for CSF sorbitol compared with group 2 ($p = 0.036$) (Fig. 2). CSF fructose concentrations also differed between groups 1 and 2 ($p = 0.036$).

Table 3 Correlations for the polyol pathway

Total group ($n = 30$)	Plasma glucose	CSF glucose	CSF sorbitol	CSF fructose
Plasma glucose	NA	0.813*** ($n = 29$)	0.870*** ($n = 29$)	0.834*** ($n = 29$)
CSF glucose	NA	NA	0.748**	0.705***
CSF sorbitol	NA	NA	NA	0.945***
CSF fructose	NA	NA	NA	NA
MoCA ($n = 23$)	-0.599** ($n = 22$)	-0.553**	-0.512*	-0.579**
Q_{alb}	0.664*** ($n = 29$)	0.709***	0.637***	0.606***
Age	0.725*** ($n = 29$)	0.633***	0.639***	0.593**

* $p < 0.05$; ** $p < 0.01$; *** $p < 0.001$ level (two-tailed)

NA, not applicable

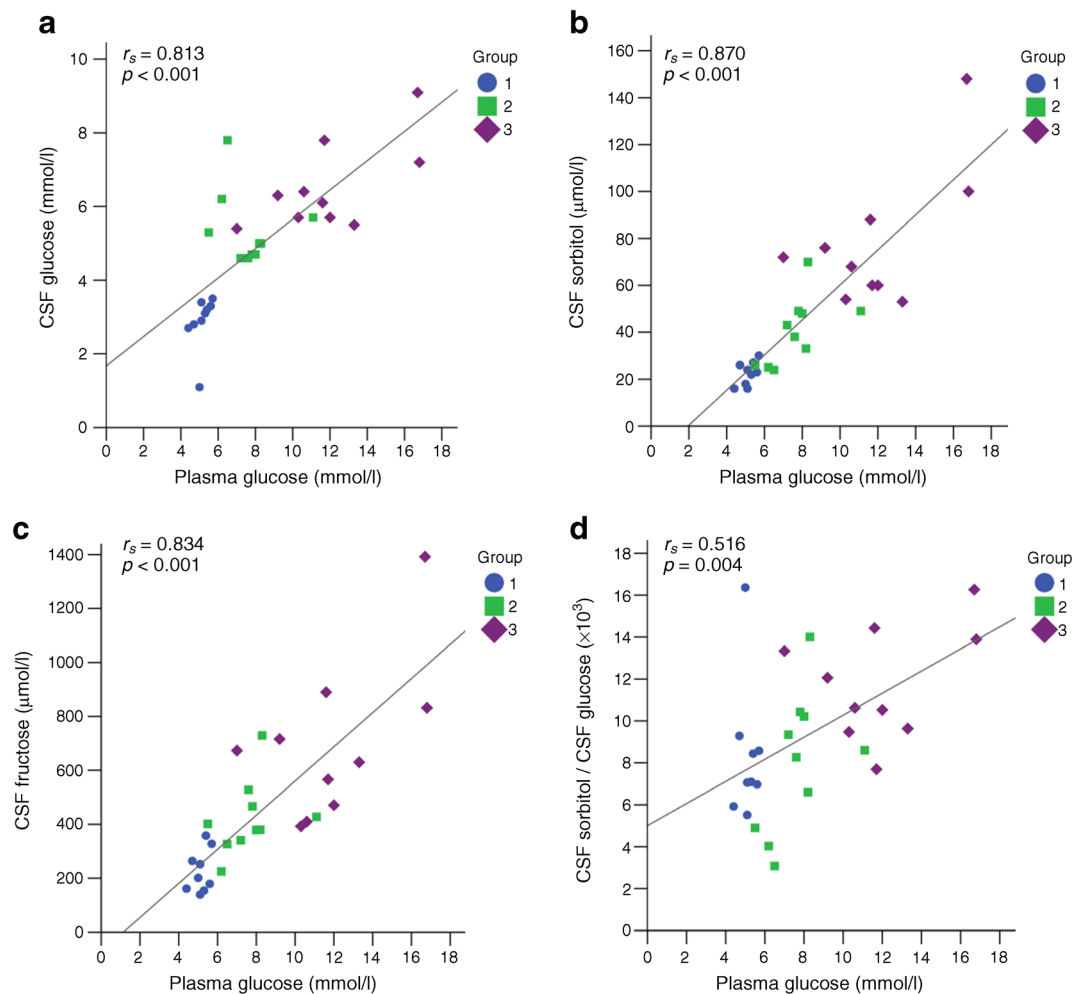


Fig. 3 Correlations between plasma glucose and (a) CSF glucose, (b) CSF sorbitol, (c) CSF fructose and (d) CSF sorbitol/CSF glucose ratio (total $n = 30$). Group 1, control group; Group 2, elevated CSF glucose; Group 3, type 2 diabetes

Our test samples showed that the detection limit of sorbitol and fructose in plasma and CSF was $6 \mu\text{mol/l}$ when processing $500 \mu\text{l}$ of material. Sorbitol was not detectable in plasma, and plasma fructose showed an abnormal peak pattern compared with what would be expected for CSF fructose (data not shown). Therefore, it was decided not to determine plasma polyols for the entire study population.

Secondary outcomes The correlations between plasma and CSF glucose, sorbitol and fructose, MoCA scores, Q_{alb} and age are shown in Table 3. There was a strong positive correlation between plasma glucose and CSF glucose ($r_s = 0.813$, $p < 0.001$), sorbitol ($r_s = 0.870$, $p < 0.001$) and fructose ($r_s = 0.834$, $p < 0.001$) when all patients were grouped together (Table 3 and Fig. 3a–c). Moreover, CSF sorbitol correlated strongly with CSF fructose in the total study group ($r_s = 0.945$, $p < 0.001$), as well as in group 1 ($r_s = 0.909$, $p < 0.001$), group 2 ($r_s = 0.705$, $p = 0.023$) and group 3 ($r_s = 0.827$, $p = 0.003$) individually.

Preoperative MoCA scores were moderately inversely correlated with plasma glucose ($p < 0.01$), CSF glucose ($p < 0.01$), CSF sorbitol ($p < 0.05$) and CSF fructose ($p < 0.01$) (Table 3). There was a moderate positive correlation between Q_{alb} and plasma glucose, CSF glucose, CSF sorbitol and CSF fructose (all $p < 0.001$).

In all patients grouped together, plasma glucose correlated with the CSF sorbitol/glucose ratio ($r_s = 0.516$, $p = 0.004$) (Fig. 3d), but not with the CSF fructose/o-glucose ratio. CSF glucose was strongly significantly correlated with CSF sorbitol ($r_s = 0.748$, $p < 0.001$) and CSF fructose ($r_s = 0.705$, $p < 0.001$). The CSF sorbitol/glucose ratio differed significantly across the groups ($p = 0.009$), and there was a significant difference in the ratio between groups 1 and 3 ($p = 0.017$) and between groups 2 and 3 ($p = 0.031$) (Fig. 2c). The CSF fructose/glucose ratio did not differ between the groups ($p = 0.224$) (Fig. 2d).

Age was positively correlated with plasma glucose and CSF glucose, sorbitol and fructose (all $p \leq 0.001$) (Table 3), and the CSF sorbitol/glucose ratio ($p = 0.015$), but not with

the CSF fructose/glucose ratio ($p=0.188$). Finally, there was a significant difference between men and women for plasma glucose, CSF glucose and CSF sorbitol/glucose ratio (all $p<0.05$), and for CSF sorbitol and CSF fructose ($p<0.01$), but not for the CSF fructose/glucose ratio ($p=0.146$).

Discussion

In this study, patients with elevated CSF glucose levels also had significantly higher CSF sorbitol and fructose levels. Even when CSF glucose values were similar, patients with diabetes had a significantly higher CSF fructose, CSF sorbitol and CSF sorbitol/glucose ratio compared with patients without diabetes. Furthermore, CSF glucose, sorbitol and fructose concentrations increased linearly with an increase in systemic glucose levels. These findings are in line with our primary hypothesis that hyperglycaemia causes a proportional increase in polyol concentrations in CSF of patients without brain disorders.

This proof-of-concept study is relevant because we demonstrate an activation of the polyol pathway across a broad spectrum of plasma and CSF glucose levels in patients both with and without diabetes. Activation of the polyol pathway is associated with possible cyto- and neurotoxic properties, and is thought to play a role in brain abnormalities and cognitive impairment through the formation of AGEs, non-enzymatic glycation of myelin or oxidative damage/stress [8–10]. For example, MRI has shown that a higher percentage of white matter hyperintensities are found in patients with affective disorders, and that these white matter hyperintensities are associated with increased glucose metabolism of the brain via the polyol pathway [8]. Furthermore, hyperglycaemia is associated with structural neuronal changes and impaired long-term spatial memory [26].

Our findings are consistent with the principle of Michaelis–Menten kinetics [27], which states that an increase in systemic glucose proportionally increases cerebral glucose via facilitated transport [27]. In addition, sorbitol and fructose concentrations in the CSF were comparable to those found in studies of patients with normal systemic glucose values [16, 17]. Activation of the polyol pathway during hyperglycaemia was demonstrated in the 1970s in patients with diabetes, but these patients were hospitalised for neurological disorders and thus were unlikely to have an intact blood–CSF barrier [18–20].

Interestingly, the CSF polyol/glucose ratios were exponentially increased when patients had diabetes, despite the fact that the CSF glucose levels of groups 2 and 3 were similar and there were no between-group differences in age, sex, MoCA scores or Q_{alb} . Thus, the differences between the two groups could not be attributed to these factors. The steep increase may be due to a statistical dispersion; however, no

such correlation was demonstrated between CSF sorbitol/systemic glucose ratios and between CSF fructose/systemic glucose ratios. Possibly it is due to upregulation of the cerebral polyol pathway in diabetes patients because of chronic hyperglycaemia, combined with a saturation of the hexokinase pathway, leaving more glucose in the CSF for the polyol pathway. It has previously been shown that a state of chronic hyperglycaemia leads to an upregulation of the polyol pathway [28, 29], and, although this upregulation has not yet been demonstrated in the human brain [17], there is previous evidence for elevated glucose, sorbitol and fructose levels in the brains of a rat model for diabetes [30].

Plasma glucose correlated significantly with the CSF sorbitol/glucose ratio, but not with the CSF fructose/glucose ratio. Possibly this difference may be related to fructose catabolism by redirection of fructose to the pentose phosphate pathway via hexokinase or ketohexokinase [31]. Alternatively, this finding may be explained by the formation of precursors of AGEs such as 3-deoxyglucosone or methylglyoxal through non-enzymatic glycation of fructose. From fructose, the enzyme phosphokinase produces fructose-3-phosphate. Both fructose and fructose-3-phosphate may be converted to 3-deoxyglucosone. In addition, fructose may be converted into triose phosphate by the action of fructokinase [32].

The measurement of polyols in CSF is a derivative measure of cerebral metabolism. As polyols can also be transported across the blood–CSF barrier, one may question the validity of CSF polyol values as a marker of cerebral glucose metabolism [33]. However, the measured plasma polyol concentrations were markedly lower than in the CSF or even below the limit of quantification. It has been previously demonstrated that the human brain produces polyols [21], and that the primary source of polyols in CSF is from the brain itself [21]. The higher levels of sorbitol and fructose in the CSF compared with plasma in our cohort also indicate this. Furthermore, the glucose, sorbitol and fructose CSF concentrations in our cohort correspond to those measured in previous studies [16–20]. Thus, it appears that changes in CSF sorbitol and fructose concentrations do indeed reflect changes in cerebral glucose metabolism.

A limitation of the present study is that the data do not provide information about changes in glucose, sorbitol and fructose concentrations in the CSF over time, as these could not be determined given our current study design. Proof of activation of the cerebral polyol pathway over time could be provided by infusion of stable isotope-labelled glucose and subsequent recovery of these isotope labels in the sorbitol and fructose. In addition, a relatively small sample size was used, which did not allow statistical correction for patient characteristics such as age, sex, ASA physical status classification or MoCA scores. This may be remedied in the future by using a larger sample size. Finally, it is possible that some patients in group 2 may have had undiagnosed type 2 diabetes,

and not all data important for diabetes patients were known (e.g. lipid status and HbA_{1c} levels); it would be preferable to include these diagnostic measurements in future studies of diabetes patients.

It is important to study whether these harmful metabolites are related to patient-relevant postoperative complications, and our results show that future studies can explore the potential of systemic glucose-lowering therapies such as insulin or incretin-based therapies to optimise cerebral glucose and polyol metabolism [34]. Suppression of the cerebral polyol pathway may, in theory, reduce cognitive impairment, and the role of (elevated) polyol concentrations in the development of cognitive decline should be investigated.

In conclusion, this study has demonstrated that, even in patients without evident neurological abnormalities, glucose is converted to polyols in the polyol pathway. We have shown increased levels of cerebral polyols in patients with diabetes, which is a first indication of an upregulation of the cerebral polyol pathway in patients with diabetes without evident neurological abnormalities. Future studies could further investigate how this increase in polyols in the CSF evolves over time, and whether they are indeed associated with clinically relevant patient outcomes, and if so, whether reducing glucose conversion in the polyol pathway results in a reduction in the incidence of such outcomes.

Acknowledgements We extend our appreciation to all patients who participated in this study. The authors thank the Core Facility Metabolomics of the Amsterdam UMC (www.cfmetabolomics.nl) for analysis of the polyols, and the Department of Clinical Chemistry at Uppsala University for performing the creatinine assays.

Data availability De-identified data are available upon reasonable request.

Funding This research was supported in part by a 2018 ESA Research Project Grant (reference number 21948) from the European Society of Anaesthesiology and Intensive Care (ESAIC) to JH and BP. The funding was used to fund the laboratory analyses of CSF sorbitol and fructose concentrations by the Core Facility Metabolomics of the Amsterdam UMC. The ABC study was supported by internal financial resources of the Anaesthesiology and Clinical Chemistry departments of the University Medical Center Groningen, the Netherlands.

Authors' relationships and activities The authors declare that there are no relationships or activities that might bias, or be perceived to bias, their work.

Contribution statement CT, MvZ, AH, JH and AA designed the study. CT, MvZ, JH and AA collected, analysed and verified the underlying data. All authors substantially contributed to the interpretation of data. CT and MvZ drafted the initial manuscript, and JH and AA revised the initial manuscript. All authors critically reviewed and revised the manuscript for important intellectual content, and gave final approval of the version to be published. CT is the guarantor of this work, and, as such, accepts full responsibility for the work.

Open Access This article is licensed under a Creative Commons Attribution 4.0 International License, which permits use, sharing, adaptation, distribution and reproduction in any medium or format, as long as you give appropriate credit to the original author(s) and the source, provide a link to the Creative Commons licence, and indicate if changes were made. The images or other third party material in this article are included in the article's Creative Commons licence, unless indicated otherwise in a credit line to the material. If material is not included in the article's Creative Commons licence and your intended use is not permitted by statutory regulation or exceeds the permitted use, you will need to obtain permission directly from the copyright holder. To view a copy of this licence, visit <http://creativecommons.org/licenses/by/4.0/>.

References

- Mergenthaler P, Lindauer U, Dienel GA, Meisel A (2013) Sugar for the brain: the role of glucose in physiological and pathological brain function. *Trends Neurosci* 36(10):587–597. <https://doi.org/10.1016/j.tins.2013.07.001>
- Jeffery J, Jornvall H (1983) Enzyme relationships in a sorbitol pathway that bypasses glycolysis and pentose phosphates in glucose metabolism. *Proc Natl Acad Sci U S A* 80(4):901–905. <https://doi.org/10.1073/pnas.80.4.901>
- Brownlee M (2001) Biochemistry and molecular cell biology of diabetic complications. *Nature* 414(6865):813–820. <https://doi.org/10.1038/414813a>
- Oimomi M, Nakamichi T, Ohara T et al (1989) Fructose-related glycation. *Diabetes Res Clin Pract* 7(2):137–139. [https://doi.org/10.1016/0168-8227\(89\)90104-6](https://doi.org/10.1016/0168-8227(89)90104-6)
- Greene DA, Lattimer SA, Sima AA (1987) Sorbitol, phosphoinositides, and sodium-potassium-ATPase in the pathogenesis of diabetic complications. *N Engl J Med* 316(10):599–606. <https://doi.org/10.1056/NEJM198703053161007>
- Merimee TJ (1990) Diabetic retinopathy. A synthesis of perspectives. *N Engl J Med* 322(14):978–983. <https://doi.org/10.1056/NEJM199004053221406>
- Oates PJ (2002) Polyol pathway and diabetic peripheral neuropathy. *Int Rev Neurobiol* 50:325–392. [https://doi.org/10.1016/s0074-7742\(02\)50082-9](https://doi.org/10.1016/s0074-7742(02)50082-9)
- Regenold WT, Hisley KC, Obuchowski A, Lefkowitz DM, Marano C, Hauser P (2005) Relationship of white matter hyperintensities to cerebrospinal fluid glucose polyol pathway metabolites – a pilot study in treatment-resistant affective disorder patients. *J Affect Disord* 85(3):341–350. <https://doi.org/10.1016/j.jad.2004.10.010>
- Regenold WT, Hisley KC, Phatak P et al (2008) Relationship of cerebrospinal fluid glucose metabolites to MRI deep white matter hyperintensities and treatment resistance in bipolar disorder patients. *Bipolar Disord* 10(7):753–764. <https://doi.org/10.1111/j.1399-5618.2008.00626.x>
- Barnea-Goraly N, Raman M, Mazaika P et al (2014) Alterations in white matter structure in young children with type 1 diabetes. *Diabetes Care* 37(2):332–340. <https://doi.org/10.2337/dc13-1388>
- Johnson RJ, Stenvinkel P, Andrews P et al (2020) Fructose metabolism as a common evolutionary pathway of survival associated with climate change, food shortage and droughts. *J Intern Med* 287(3):252–262. <https://doi.org/10.1111/joim.12993>
- Eshuis WJ, Hermanides J, van Dalen JW et al (2011) Early postoperative hyperglycemia is associated with postoperative complications after pancreatoduodenectomy. *Ann Surg* 253(4):739–744. <https://doi.org/10.1097/SLA.0b013e31820b4bfc>
- Polderman JA, Hollmann MW, DeVries JH, Preckel B, Hermanides J (2015) Perioperative hyperglycemia and glucose variability in gynecologic laparotomies. *J Diabetes Sci Technol* 10(1):145–150. <https://doi.org/10.1177/1932296815595985>

14. Polderman JA, Van Velzen L, Wasmoeth LG et al (2015) Hyperglycemia and ambulatory surgery. *Minerva Anestesiol* 81(9):951–959
15. Krinsley JS (2003) Association between hyperglycemia and increased hospital mortality in a heterogeneous population of critically ill patients. *Mayo Clin Proc* 78(12):1471–1478. <https://doi.org/10.4065/78.12.1471>
16. Kusmierz J, DeGeorge JJ, Sweeney D, May C, Rapoport SI (1989) Quantitative analysis of polyols in human plasma and cerebrospinal fluid. *J Chromatogr* 497:39–48. [https://doi.org/10.1016/0378-4347\(89\)80003-9](https://doi.org/10.1016/0378-4347(89)80003-9)
17. Hwang JJ, Johnson A, Cline G et al (2015) Fructose levels are markedly elevated in cerebrospinal fluid compared to plasma in pregnant women. *PLoS One* 10(6):e0128582. <https://doi.org/10.1371/journal.pone.0128582>
18. Pitkanen E, Servo C (1973) Cerebrospinal fluid polyols in patients with diabetes mellitus. *Clin Chim Acta* 44(3):437–442. [https://doi.org/10.1016/0009-8981\(73\)90089-2](https://doi.org/10.1016/0009-8981(73)90089-2)
19. Servo C, Palo J, Pitkanen E (1977) Polyols in the cerebrospinal fluid and plasma of neurological, diabetic and uraemic patients. *Acta Neurol Scand* 56(2):111–116. <https://doi.org/10.1111/j.1600-0404.1977.tb01416.x>
20. Servo C, Palo J, Pitkanen E (1977) Gas chromatographic separation and mass spectrometric identification of polyols in human cerebrospinal fluid and plasma. *Acta Neurol Scand* 56(2):104–110. <https://doi.org/10.1111/j.1600-0404.1977.tb01415.x>
21. Hwang JJ, Jiang L, Hamza M et al (2017) The human brain produces fructose from glucose. *JCI Insight* 2(4):e90508. <https://doi.org/10.1172/jci.insight.90508>
22. Tigchelaar C, Atmosoerodjo SD, van Faassen M et al (2021) The Anaesthetic biobank of cerebrospinal fluid: a unique repository for neuroscientific biomarker research. *Ann Transl Med* 9(6):455. <https://doi.org/10.21037/atm-20-4498>
23. Teunissen CE, Petzold A, Bennett JL et al (2009) A consensus protocol for the standardization of cerebrospinal fluid collection and biobanking. *Neurology* 73(22):1914–1922. <https://doi.org/10.1212/WNL.0b013e3181c47cc2>
24. Jansen G, Muskiet FA, Schierbeek H, Berger R, van der Slik W (1986) Capillary gas chromatographic profiling of urinary, plasma and erythrocyte sugars and polyols as their trimethylsilyl derivatives, preceded by a simple and rapid prepurification method. *Clin Chim Acta* 157(3):277–293. [https://doi.org/10.1016/0009-8981\(86\)90303-7](https://doi.org/10.1016/0009-8981(86)90303-7)
25. American Society of Anesthesiologists (2020) ASA Physical Status Classification System. Available from <https://www.asahq.org/standards-and-guidelines/asa-physical-status-classification-system>. Accessed 22 Oct 2021
26. Malone JJ, Hanna S, Saporta S et al (2008) Hyperglycemia not hypoglycemia alters neuronal dendrites and impairs spatial memory. *Pediatr Diabetes* 9(6):531–539. <https://doi.org/10.1111/j.1399-5448.2008.00431.x>
27. Simpson IA, Carruthers A, Vannucci SJ (2007) Supply and demand in cerebral energy metabolism: the role of nutrient transporters. *J Cereb Blood Flow Metab* 27(11):1766–1791. <https://doi.org/10.1038/sj.jcbfm.9600521>
28. Dunlop M (2000) Aldose reductase and the role of the polyol pathway in diabetic nephropathy. *Kidney Int Suppl* 77:S3–S12. <https://doi.org/10.1046/j.1523-1755.2000.07702.x>
29. Giri B, Dey S, Das T, Sarkar M, Banerjee J, Dash SK (2018) Chronic hyperglycemia mediated physiological alteration and metabolic distortion leads to organ dysfunction, infection, cancer progression and other pathophysiological consequences: an update on glucose toxicity. *Biomed Pharmacother* 107:306–328. <https://doi.org/10.1016/j.biopha.2018.07.157>
30. Ismail N, Kureishy N, Church SJ et al (2020) Vitamin B5 (D-pantothenic acid) localizes in myelinated structures of the rat brain: potential role for cerebral vitamin B5 stores in local myelin homeostasis. *Biochem Biophys Res Commun* 522(1):220–225. <https://doi.org/10.1016/j.bbrc.2019.11.052>
31. Oppelt SA, Zhang W, Tolan DR (2017) Specific regions of the brain are capable of fructose metabolism. *Brain Res* 1657:312–322. <https://doi.org/10.1016/j.brainres.2016.12.022>
32. Sima AA, Sugimoto K (1999) Experimental diabetic neuropathy: an update. *Diabetologia* 42(7):773–788. <https://doi.org/10.1007/s001250051227>
33. Wuest M, Trayner BJ, Grant TN et al (2011) Radiopharmacological evaluation of 6-deoxy-6-[¹⁸F]fluoro-D-fructose as a radiotracer for PET imaging of GLUT5 in breast cancer. *Nucl Med Biol* 38(4):461–475. <https://doi.org/10.1016/j.nucmedbio.2010.11.004>
34. Muscogiuri G, DeFronzo RA, Gastaldelli A, Holst JJ (2017) Glucagon-like peptide-1 and the central/peripheral nervous system: crosstalk in diabetes. *Trends Endocrinol Metab* 28(2):88–103. <https://doi.org/10.1016/j.tem.2016.10.001>

Publisher's note Springer Nature remains neutral with regard to jurisdictional claims in published maps and institutional affiliations.