


STUDY PROTOCOL

Open Access



A study protocol for a randomized controlled trial of family-partnered delirium prevention, detection, and management in critically ill adults: the ACTIVATE study

Kirsten M. Fiest^{1,2,3*} , Karla D. Krewulak¹, Bonnie G. Sept¹, Krista L. Spence¹, Judy E. Davidson⁴, E. Wesley Ely⁵, Andrea Soo¹ and Henry T. Stelfox^{1,2,3}

Abstract

Background: Delirium is very common in critically ill patients admitted to the intensive care unit (ICU) and results in negative long-term outcomes. Family members are also at risk of long-term complications, including depression and anxiety. Family members are frequently at the bedside and want to be engaged; they know the patient best and may notice subtle changes prior to the care team. By engaging family members in delirium care, we may be able to improve both patient and family outcomes by identifying delirium sooner and capacitating family members in care.

Methods: The primary aim of this study is to determine the effect of family-administered delirium prevention, detection, and management in critically ill patients on family member symptoms of depression and anxiety, compared to usual care. One-hundred and ninety-eight patient-family dyads will be recruited from four medical-surgical ICUs in Calgary, Canada. Dyads will be randomized 1:1 to the intervention or control group. The intervention consists of family-partnered delirium prevention, detection, and management, while the control group will receive usual care. Delirium, depression, and anxiety will be measured using validated tools, and participants will be followed for 1- and 3-months post-ICU discharge. All analyses will be intention-to-treat and adjusted for pre-identified covariates. Ethical approval has been granted by the University of Calgary Conjoint Health Research Ethics Board (REB19–1000) and the trial registered. The protocol adheres to the Standard Protocol Items: Recommendations for Interventional Trials (SPIRIT) checklist.

Discussion: Critically ill patients are frequently unable to participate in their own care, and partnering with their family members is particularly important for improving experiences and outcomes of care for both patients and families.

Trial registration: Registered September 23, 2019 on Clinicaltrials.gov [NCT04099472](https://clinicaltrials.gov/ct2/show/study/NCT04099472).

Keywords: Delirium, Critical care, Family-centered care, Education, Prevention

* Correspondence: kmfiest@ucalgary.ca

¹Department of Critical Care Medicine, University of Calgary & Alberta Health Services, Calgary, Canada

²Department of Community Health Sciences & O'Brien Institute of Public Health, University of Calgary, Calgary, Canada

Full list of author information is available at the end of the article



© The Author(s). 2020 **Open Access** This article is licensed under a Creative Commons Attribution 4.0 International License, which permits use, sharing, adaptation, distribution and reproduction in any medium or format, as long as you give appropriate credit to the original author(s) and the source, provide a link to the Creative Commons licence, and indicate if changes were made. The images or other third party material in this article are included in the article's Creative Commons licence, unless indicated otherwise in a credit line to the material. If material is not included in the article's Creative Commons licence and your intended use is not permitted by statutory regulation or exceeds the permitted use, you will need to obtain permission directly from the copyright holder. To view a copy of this licence, visit <http://creativecommons.org/licenses/by/4.0/>. The Creative Commons Public Domain Dedication waiver (<http://creativecommons.org/publicdomain/zero/1.0/>) applies to the data made available in this article, unless otherwise stated in a credit line to the data.

Background

Patients admitted to the Intensive Care Unit (ICU) are the sickest in the healthcare system; they have complex medical problems that require urgent treatment with life sustaining technologies [1]. Within this context, one of the largest challenges in the care of critically ill patients is the development of delirium. Delirium (an acute confusional state characterized by fluctuating course, attention deficits, and severe disorganization of behavior [2]) is present in over half of all critically ill patients admitted to ICUs [3–8]. Delirium is associated with negative outcomes in critically ill patients, including longer hospital stays [9], increased risk of long-term cognitive impairment, and death [10–12].

Family members of critically ill patients are also exposed to high levels of stress and are at risk of developing stress-related complications during and after the ICU stay, including sleep disturbances, anxiety, and depression [13]. Witnessing delirium is distressing for families, who watch their loved one's suffering both during and after a hospital stay [14]. Families are essential to the journey of critically ill patients and their participation in care may improve outcomes for both patients and families [15–18]. For example, there was a decrease in symptoms of both anxiety and depression in families who witnessed cardiopulmonary resuscitation [16] and those who received information on what to expect at the end of life [17]. Family involvement in preventing, detecting, and managing delirium has the potential to produce similar positive effects. The *Facilitated Sensemaking* framework [19–21] provides a theoretical basis for patient- and family-oriented studies in the ICU; engaging families in decision making and care provision may enhance their ability to cope with a new and challenging situation. Patients may also benefit from greater inclusion of family members in the ICU. Increased family presence does not increase infection rates [22, 23] or adverse events [23] and may decrease cardiocirculatory complications [24] and reduce patient falls [25]. Delirium is a common and serious complication of critical illness that affects both patients and their family members. ICU patients, family members, providers and decision-makers (ICU stakeholders) recognize the enormity of this issue and stakeholder groups have identified delirium detection and management as a top quality improvement opportunity [26–30].

Despite high prevalence, detrimental effects, and priority as a quality improvement initiative, delirium is often overlooked in the ICU or assumed to be a normal part of a patients' clinical course [31]. The importance of brain dysfunction in the ICU is increasingly recognized and although formal delirium screening programs have been implemented worldwide, the majority of cases remain undetected [31]. Family members may be able to

notice subtle changes in patients' cognition and behavior before an unfamiliar clinical observer [32]. The prevention and management of delirium is also challenging; the only guideline recommended therapies for delirium are non-pharmacological and there are presently no known effective pharmacotherapies for delirium [33]. Family members may be engaged in these non-pharmacological delirium prevention and management therapies at the bedside through activities such as re-orientation, familiarization, and mobilization [33]. Critically ill patients are frequently unable to participate in their own care; by partnering with their family members (e.g., immediate family, relatives, friends), we may be able to improve experiences and outcomes of care for both patients and families [10, 34, 35]. We hypothesize that structured engagement of family members in the detection of delirium symptoms and prevention and management of delirium using non-pharmacological strategies will decrease the number of symptoms of anxiety and depression in family members of critically ill patients and may decrease the duration and severity of delirium in critically ill patients.

Study aims

Primary aim

To determine the effect of family-administered delirium prevention, detection, and management in critically ill patients on family member symptoms of depression and anxiety, compared to usual care.

Secondary aims

- 1) To determine the effect of family-administered delirium prevention, detection, and management in critically ill patients on family member symptoms of psychological distress, compared to usual care.
- 2) To determine the effect of family-administered delirium prevention, detection, and management on the prevalence (ever/never delirium as indicated by an Intensive Care Unit Delirium Screening Checklist [ICDSC] score ≥ 4), duration (total days of an ICDSC score ≥ 4), and severity of delirium (as indicated by the ICDSC score, which ranges from 0 to 8) in critically ill patients, compared to usual care.
- 3) To determine the effect of family-administered delirium prevention, detection, and management on the diagnosis of the patient with delirium (ICDSC score ≥ 4), compared to usual care.
- 4) To determine the effect of family-administered delirium prevention, detection, and management on family member knowledge of delirium in critically ill patients, compared to usual care.

- 5) To determine the effect of family-administered delirium prevention, detection, and management on the burden of delirium (e.g., feelings of helplessness) experienced by family members of critically ill patients, compared to usual care.

Patient involvement

Inclusiveness, support, mutual respect, and co-building are the core principles that will guide this work [36]. Patient and family member (herein referred to as patient advisors) involvement in the current project began during five meetings held between September 10, 2018 and September 5, 2019; they participated in priority setting initiatives and group discussions alongside other stakeholders (e.g., researchers, clinicians, decision makers). The research questions, protocol, and this paper were jointly developed with patient advisors (BGS) on our team. The patient advisors for this project have worked with our team consenting and recruiting participants for projects in the ICU and will continue to do so for this study. The intervention and questionnaire packages were piloted with patient advisors to determine appropriateness of language and the time commitment required for completion. Patient advisors will be included as authors on resulting publications (including the current paper, BGS) and be directly involved in dissemination through presentation of results to scientific and lay audiences. Our multidisciplinary team of patient advisors, researchers, clinicians, and knowledge users have demonstrated a track record of research success in co-leading national peer-reviewed grants (including the funding for the proposed study) and publishing with patient advisors [26, 37–39]. All patient advisors are compensated for their time.

Methods

Study design

We will conduct a multicenter, non-inferiority randomized controlled trial with participants randomly assigned to family-partnered delirium prevention, detection, and management or control (standard patient care). Patients and family members will be recruited from four medical-surgical ICUs located in four hospitals (Foothills Medical Centre [FMC], Peter Loughheed Centre [PLC], Rockyview General Hospital [RGH], South Health Campus [SHC]) within a publicly funded healthcare system (Alberta, Canada). FMC (28-beds), PLC (18-beds) and RGH (10-beds) are teaching hospitals, while SHC (10-beds) is a non-teaching hospital. All four ICUs are within the same health region, have the same bed structure (single bed, private room), open visitation policies and standard of delirium care. The research team has access to eCritical MetaVision, a population-based, bedside

clinical information system which captures in real time demographic, clinical, and outcome data for all ICU patients in Alberta, including routinely collected clinical measures of delirium and sedation [40]. Patient demographics (e.g., birthdate, sex) and clinical characteristics (e.g., admitting SOFA and APACHE-II scores, ICDSC and RASS assessments, sedation, etc.) will be collected.

Eligibility criteria

Consecutive, eligible (Table 1) patients with at least one family member (defined here as family, relatives, or friends) present in the ICU will be approached by a patient advisor or research assistant to participate (Additional file 1). The patient and family member will be enrolled in the study as a dyad. Participants will be recruited at any point during their ICU admission, and participation will occur to a maximum of 5 days, or until ICU discharge or death. Anticipated study flow is presented in Table 2. If more than one family member is present, the study team will enroll the family member most familiar with the patient or the familiar expected to visit the most (and provide complete data).

Randomization

Participants will be randomized using computer-generated randomization to either the intervention group or the control group (1:1). Randomization will be stratified by site and restricted using permuted random blocks within each strata. The random allocation sequence will be implemented using the REDCap study database by a biostatistician unaffiliated with the study. This biostatistician will generate the random allocation sequence to assign participants to either the intervention or control groups. No one directly involved in the study will have access to the allocation sequence and this feature will be accessed exclusively by the unaffiliated biostatistician. The pre-determined allocation sequence from the biostatistician will be employed centrally (FMC) to assign participants to the intervention or control group. Research assistants will receive this information from the REDCap database once a patient is consented.

Blinding

Due to the nature of the intervention, participants, care providers, and study staff will not be blinded to the intervention. The individuals collecting data and conducting the data analysis will be blinded to the assignment of interventions.

Table 1 Study Inclusion and Exclusion Criteria

	Dyad	
	Patient	Family
Inclusion Criteria	<ul style="list-style-type: none"> • Age 18 years of age or above • Family member present • Richmond Agitation Sedation Scale score ≥ -3 (eligible for delirium assessment) 	<ul style="list-style-type: none"> • Age 18 years of age or above • Present
Exclusion Criteria	<ul style="list-style-type: none"> • Unable to provide informed consent (patient or family member) • Inability to communicate with the research staff (e.g., no hearing impairment and must be fluent in English) • Anticipated to remain in ICU for less 24 h • Primary neurological injury (e.g., severe traumatic brain injury, subarachnoid hemorrhage) • Glasgow Coma Scale score < 9 	<ul style="list-style-type: none"> • Unable to provide informed consent (patient or family member) • Inability to communicate with the research staff (e.g., no hearing impairment and must be fluent in English) • Anticipated to remain in ICU for less 24 h

Study intervention

Participants in both the intervention and control groups will receive an informational pamphlet developed by our team on ICU delirium (standard of care); this will be presented to all patients and families upon admission. In addition to the pamphlet, the intervention is comprised of two components: (1) an education module for family members to prevent, detect, and manage ICU delirium; and (2) delirium detection using the Sour Seven [41], a validated family member-administered ICU delirium detection tool [42]. Family members are not engaged in the assessment of delirium in usual care. To ensure consistency between patients, the study team will use a standardized wording to introduce the study and to answer common questions.

- (1) Education: Our team developed and pilot tested the educational materials, both paper (i.e., booklet) and digital (i.e., <https://youtu.be/I88-Lohht64>) formats, which included a video, hypothetical case vignettes, and a delirium knowledge questionnaire. We created the educational video with input from patients, family members, and members of the ICU care team. In addition our team modified an existing Caregiver Delirium Knowledge Questionnaire [43] to the ICU context to develop the Caregiver ICU Delirium Knowledge Questionnaire (CIDKQ) [44]. We developed case vignettes of hypothetical ICU patients based on the four features that, when found in combination, indicate delirium is present: sudden onset or fluctuating course AND inattention AND either altered level of consciousness OR disorganized thinking. **The CIDKQ** (Cronbach alpha = 0.80) and case vignettes (Sour Seven Sensitivity: 90.0%, Specificity: 65.0%) were validated in a cross-

sectional study of 80 family members [44]. The **educational materials were validated in a quasi-experimental pre-test post-test study to validate** the education materials. Preliminary results demonstrate improvement in family member delirium knowledge after receiving delirium education (as measured by the CIDKQ) and improvement in identification of delirium in hypothetical ICU patients (Sour Seven Sensitivity: 100.0%, Specificity: 75%). This education module will be presented to family members on the signs of delirium, risk factors, delirium detection, and delirium prevention and management using non-pharmacological strategies. The material will be provided as a 6-min video or as a booklet. Family members will practice identifying delirium with the Sour Seven, using previously validated case vignettes of hypothetical ICU patients [44]. The education module will be provided on day one of the study by a patient advisor or research assistant.

- (2) **Family-administered delirium prevention, detection, and management:** Our team completed a **systematic review** to identify existing family member-administered delirium detection tools [45], which included the Family Confusion Assessment Method (FAM-CAM) [46] and Sour Seven [41] **and an observational study** of 147 patient-family member dyads by our team evaluated the reliability and validity of the FAM-CAM [46] and Sour Seven [41] in the ICU [39, 42]. The Sour Seven had superior diagnostic accuracy [(Sour Seven Sensitivity: 72.9%, Specificity: 68.8%) (FAM-CAM-Sensitivity: 54.1%, Specificity: 76.8%)], with family members preferring the Sour Seven and thus, the Sour Seven will be employed in the current study [39].

Table 2 Schedule of enrolment, interventions, and assessments

Activity / assessment	CRF (Yes/No)	Staff Member	-1 Prescreening / consent	0 Baseline / Randomization	T1 Immediately post-randomization	T2 Daily for Remainder of ICU stay	F1 Follow-up 1-month	F2 Follow-up 3-months
Prescreening consent	No	Nurse unaffiliated with study	X					
Screening log	No	Research Assistant	X					
Consent form	No	Research Assistant	X					
Inclusion/Exclusion form	Yes	Research Assistant	X					
Randomization	No	Biostatistician unaffiliated with study		X				
Patient demographics form	Yes	Research Assistant		X				
Family member demographics form	Yes	Research Assistant		X				
Educational video/booklet	No	Research Assistant			X			
Delirium prevention and management	Yes	Research Assistant				X		
Delirium detection (Sour Seven)	Yes	Research Assistant				X		
CIDKQ	Yes	Research Assistant		X		X	X	X
GAD-7	Yes	Research Assistant		X		X	X	X
PHQ-9	Yes	Research Assistant		X		X	X	X
K-10	Yes	Research Assistant		X		X	X	X
DEL-B	Yes	Research Assistant		X		X		
ICDSC	No	Research Assistant		X		X		
RASS	No	Research Assistant		X		X		
CCFNI	Yes	Research Assistant		X				
BCQ	Yes	Research Assistant		X				
CSS	Yes	Research Assistant		X				

Abbreviations: BCQ Barriers to Care Questionnaire in the ICU, CIDKQ Caregiver ICU Delirium Knowledge Questionnaire, CCFNI Critical Care Family Needs Inventory, CSS Caregiver Coping Strategies, DEL-B Delirium Burden, GAD-7 Generalized Anxiety Disorder 7, ICU Intensive Care Unit, K-10 Kessler Psychological Distress Scale, PHQ-9 Patient Health Questionnaire 9, RASS Richmond Agitation Sedation Scale

- (3) For up to five study days, family members will be provided a daily checklist of non-pharmacological interventions to prevent and manage delirium, which include patient orientation (e.g., noting date, time, and location), mobility (e.g., family-assisted mobility), and environmental protocols (e.g., providing glasses or ear plugs). They will complete the Sour Seven once daily to detect delirium in the patient.

Timing of intervention

The first day of intervention materials will be provided to the family upon enrollment (Fig. 1). The family will be provided ICU delirium education either by watching a 6-min video on their personal device or on a study tablet. If preferred, the family caregiver can receive the education by reading through a physical delirium education

booklet with the research assistant or patient advisor (to ensure standardized provision of delirium education). Following the delirium education, the family will use the information contained in two case vignettes to practice completing the Sour Seven. Demographic questionnaires for the patient and family member will be administered on day one of the study. Knowledge of delirium on the CIDKQ [44] will be assessed prior to the intervention and immediately following administration of the education module. Delirium prevention and management strategies utilized by the family will be queried once daily (for 5 days maximum). The burden of delirium (Delirium Burden Scale [DEL-B]) on caregivers will be assessed daily for up to 5 days. Family delirium detection assessments (Sour Seven) will be conducted once daily over the course of the ICU stay (maximum 5 days). The

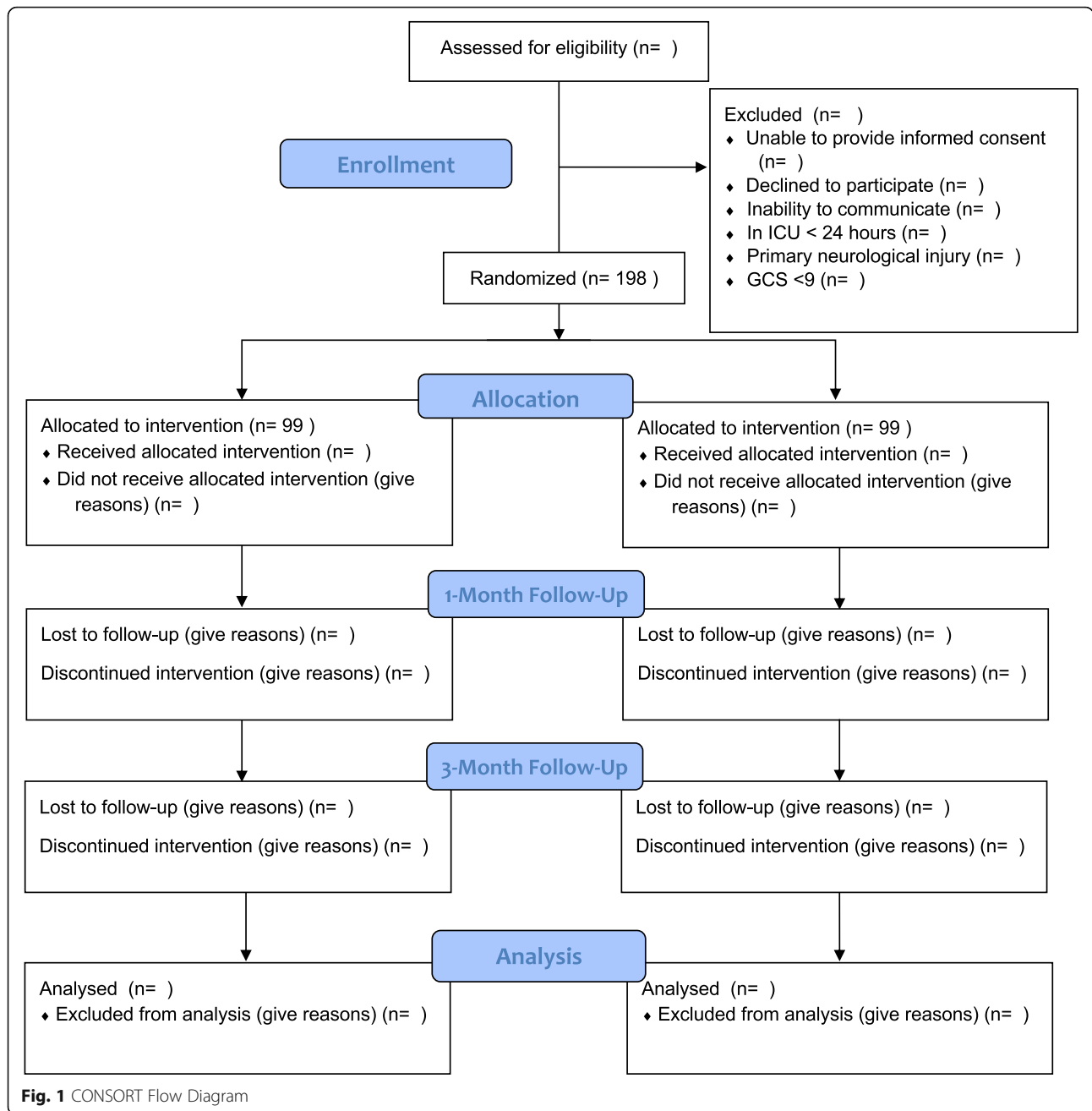


Fig. 1 CONSORT Flow Diagram

results of the family delirium assessments will be shared with the bedside nurse by the research team. Family member psychiatric symptom assessments (Patient Health Questionnaire-9 [PHQ-9] and Generalized Anxiety Disorder-7 [GAD-7]) and distress (Kessler Psychological Distress Scale [K-10]) will be conducted daily over the course of the ICU stay (maximum of 5 days), with the distress and psychiatric questionnaires completed BEFORE the Sour Seven questionnaire is completed. Questionnaires on the caregiver’s ICU experience (Critical Care Family Needs Inventory [CCFNI]; Barriers

to Care Questionnaire [BCQ]) and coping strategies (Coping Strategies Scale [CSS]), will be completed once over the course of the ICU stay (day 1).

Study follow-up

Follow-up of family members will occur at 1- and 3-months post-ICU discharge (Fig. 1). Our team has developed a secure, online survey site for questionnaire completion. For participants who prefer paper forms, a pre-addressed stamped envelope with questionnaires will be provided. We will send reminders to participants 1-

week prior to the follow-up date, and continue to provide reminders up to 1-week following the follow-up date.

Measurement of exposures

Caregiver ICU delirium knowledge questionnaire (CIDKQ)

The CIDKQ is a 21-item questionnaire to assess a caregiver's delirium knowledge (e.g., risk factors, outcomes and symptoms). The questionnaire will be completed on day one of the study before and immediately after the education module, and at 1-month and 3-month follow-up post patient ICU discharge.

Sour Seven

The Sour Seven is a 7-item tool to detect delirium based on the Diagnostic and Statistical Manual of Mental Disorders (DSM) criteria [2] for delirium in patients, including those with dementia, and is designed to be administered by family members [41]. Assessed symptoms include reduced attention, an altered level of awareness, and disordered thinking. Scores of ≥ 9 out of 18 are indicative of delirium [41]. The questionnaire will be completed once daily for up to five study days.

Critical Care Family Needs Inventory (CCFNI)

The CCFNI is a 45-item tool that identifies caregiver needs across five domains: assurance, proximity, information, comfort, and support [47, 48].

Barriers to Care Questionnaire (BCQ)

The BCQ is a 39-item tool that assesses caregiver barriers regarding health knowledge and beliefs, expectations about care, skills, and marginalization [49]. Scores range from 0 to 100, with higher scores indicating fewer barriers [50].

Coping Strategies Scale (CSS)

The CSS is a 48-item questionnaire that assesses a caregiver's coping strategies in response to stress caused by health-related issues [51].

Richmond Agitation and Sedation Scale (RASS)

The RASS is a 10-point agitation-sedation scale centered at 0 (indicates calm and alert), with scores ranging from +4 to -5; more negative scores indicate greater levels of sedation and more positive scores indicate higher levels of agitation [52]. The RASS score is completed by on-duty bedside nurses as part of standard care every 4 h.

Measurement of outcomes

Family member outcomes

Generalized Anxiety Disorder-7 (GAD-7) (primary aim) The GAD-7 is a validated 7-item scale following the DSM criteria for generalized anxiety disorder (GAD)

over the previous 2 weeks [53]. Scores of ≥ 10 out of 21 are indicative of clinically significant GAD [53]. The questionnaire will be completed by caregivers (assessing their symptoms) once daily for up to five study days, and at 1-month and 3-month follow-up post patient ICU discharge.

Patient Health Questionnaire (PHQ-9) (primary aim)

The PHQ-9 is a validated 9-item scale for assessing symptoms of major depression in the past 2 weeks, based on DSM criteria for depression [54]. Scores of ≥ 10 out of 27 indicate clinically significant depression [54]. The questionnaire will be completed by caregivers (assessing their symptoms) once daily for up to five study days, and at 1-month and 3-month follow-up post patient ICU discharge.

Kessler Psychological Distress Scale (K-10)

(secondary aim 1) The K-10 is a 10-item tool to measure psychological distress and the likelihood of having a mental disorder [55] with higher scores indicating greater psychological distress. The questionnaire will be completed by caregivers (assessing their symptoms) once daily for up to five study days, and at 1-month and 3-month follow-up post patient ICU discharge.

Delirium Burden Scale (DEL-B) (secondary aim 5)

The DEL-B is an 8-item tool with two-level questions; the first level lists delirium burden features and if answered positive (yes), the follow-up question asks caregivers to rate how distressing the burden (e.g., feelings of helplessness, concern about increased responsibilities, not being recognized by patient) was on a 0–4 scale [56]. Total scores range between 0 and 40, with higher scores indicative of greater burden [56]. The DEL-B will be completed once daily for up to five study days.

Patient outcomes

Intensive Care Delirium Screening Checklist (ICDSC)

The ICDSC is an 8-item, delirium assessment tool for use in the ICU (1 point per item) [4]. An altered level of consciousness, along with the presence of three other symptoms, including inattention, psychomotor agitation/retardation, and disorientation are required to diagnose delirium. Scores of ≥ 4 out of 8 on the ICDSC are indicative of delirium (Sensitivity: 99%; Specificity: 64%) [4]. The ICDSC yields both a continuous measure of symptoms and a dichotomous diagnosis of delirium. The ICDSC is completed twice daily by on-duty bedside nurses as part of standard care.

Statistical analysis plan

All data will be analyzed as intention to treat. Descriptive statistics will be used to summarize the patient and

family characteristics. For all analyses, we will consider a two-tailed p -value < 0.05 to be statistically significant, and will adjust for multiple comparisons (Bonferroni correction) in the primary analysis where appropriate. For the secondary aims, we will not correct for multiple comparisons with statistical procedures, but rather consider them in our interpretation. Subgroup analyses and a priori *covariates* to be considered are: presence of mechanical ventilation, RASS score, delirium subtype, patient frailty status (based on Clinical Frailty Scale scores), patient age, patient sex, caregiver age, caregiver sex, and baseline levels of symptoms of depression, anxiety, and psychological distress. Linear regression models will be used to assess for effect modification and confounding. Missing data will be tabulated for all outcomes. If more than 5% of outcome data is missing, multiple imputation will be employed; for the primary aim, we will also conduct a sensitivity analysis assuming the data is missing not at random.

For the primary aim, we will report a difference in proportion of the clinically significant symptoms of depression [PHQ-9] and anxiety [GAD-7], mean PHQ-9 and GAD-7 scores, and frequency of categories of depression and anxiety (i.e., minimal, mild, moderate and severe) (at discharge from ICU, 1-, and 3- month follow-up) between control and intervention groups. For secondary aims we will report: 1) A difference in proportion of the most severe family members symptoms of psychological distress [K-10] (at discharge from ICU, 1-, and 3- month follow-up) between control and intervention groups. 2) Prevalence of delirium: Difference in proportion of patients with clinical delirium (ICDSC score ≥ 4) pre-post intervention (in-ICU) between control and intervention groups. Duration of delirium: Difference in mean days with clinical delirium (ICDSC score ≥ 4) pre-post intervention between control and intervention groups (in-ICU). Duration of delirium-free days: Difference in mean days without delirium on the ICDSC pre-post intervention between control and intervention groups (in-ICU). Severity of delirium: Difference in most severe ICDSC scores pre-post intervention between control and intervention groups (in-ICU). 3) Difference in the diagnosis of delirium in the medical chart, compared to usual care (when appropriate, i.e., when delirium is present) pre-post intervention between control and intervention groups (in-ICU). 4) Difference in mean CIDKQ scores pre-post intervention between control and intervention groups (in-ICU). 5) Difference in mean DEL-B scores pre-post intervention between control and intervention groups (in-hospital). The statistical significance of the differences between proportions or means (between the intervention and control groups) will be calculated using the.

Sample size calculation

Primary Outcome: To find a difference in the mean score on the PHQ-9 or GAD-7 of 3-points (from 13 to 10), with a standard deviation of 5-points, power of 90%, an alpha level of 0.05, and 20% loss to follow-up (based off of previous mortality rates in the study ICUs [local data]), 72 dyads per group are required ($N = 144$). **Secondary Outcomes:** To find a difference in the proportion of delirium events reported in the medical chart (most conservative estimate based on secondary outcomes selected) of 20% (from 10 to 30%) at 90% power, an alpha level of 0.05, and 20% loss to follow up, 99 dyads per group are required ($N = 198$). The primary outcome requires a smaller sample size, and thus the most conservative number based on a secondary outcome is employed here.

Dissemination

Given the study carries minimal risk, a data safety and monitoring board has not been established. Team members (including patient advisors and trainees) will present the results of this work to a variety of knowledge users, including researchers and clinicians at research rounds and the public at open engagement sessions (e.g., Café Scientifique [37]) and patient-identified forums of interest. Traditional dissemination strategies will include the publication of results in a peer-reviewed journal and educational sessions, while we will employ non-traditional dissemination strategies including blog and social media posts targeted at a public audience. The study design adhered to the Standard Protocol Items: Recommendations for Interventional Trials (SPIRIT) checklist [57]. Any modifications to the protocol will be agreed upon by all protocol authors and approved by the ethics board prior to implementation.

Registration

This study is registered on clinicaltrials.gov (NCT04099472).

Study and data management

The coordinating centre for the study is the FMC in Calgary, Canada. Local investigators at each site will be responsible, along with a study coordinator, for day-to-day operations. Data will be managed in a REDCAP database created for this project and stored on a secure institutional network drive. Hard copy materials will be stored in a secure locked office in a locked cabinet. All data will only be accessible by study personnel.

Discussion

Previous research demonstrates that family members of critically ill patients want to assist with nonpharmacological delirium prevention activities, but most family

members do not possess enough delirium knowledge to be effective partners [58, 59]. A study by Black et al. reported family participation in psychological care does not improve the incidence of delirium [60]. These data will help us understand the effect that a family member's participation in delirium prevention, detection and management will have on family-centered psychological outcomes.

The primary limitation for the ACTIVATE study is loss to follow-up after ICU discharge, which would threaten the internal validity of our findings through selection bias, should those who remain differ from those who are lost. Our experience recruiting in this population will help mitigate this issue; specifically the inclusion of patient advisors as recruiters, which we have found increases response rates dramatically (from 23% [39] to 75% [42]). Questionnaire completion will depend on the timing and availability of family members, thus missing data may also present a threat to our study through selection bias. We will ensure flexible opportunities for questionnaire completion to facilitate data capture and employ methods to impute missing data where appropriate. The burden of completing the questionnaires presents an additional limitation to the study; we have piloted the questionnaires with patient researchers on our team to ensure the length is manageable (average time less than 20 min).

Supplementary information

Supplementary information accompanies this paper at <https://doi.org/10.1186/s12913-020-05281-8>.

Additional file 1. Study consent forms for patients and family members. Approved informed consent forms for both patients and family members.

Additional file 2. SPIRIT 2013 Checklist: Recommended items to address in a clinical trial protocol and related documents. SPIRIT checklist and corresponding page numbers in the manuscript.

Abbreviations

APACHE: Acute Physiology and Chronic Health Evaluation; BCQ: Barriers to Care Questionnaire; CCFNI: Critical Care Family Needs Inventory; CIDKQ: Caregiver ICU Delirium Knowledge Questionnaire; CONSORT: Consolidated Standards of Reporting Trials; CSS: Coping Strategies Scale; DEL-B: Delirium Burden Scale; DSM: Diagnostic and Statistical Manual of Mental Disorders; FAM-CAM: Family Confusion Assessment Method; FMC: Foothills Medical Centre; GAD: Generalized Anxiety Disorder; GAD-7: Generalized Anxiety Disorder-7 Item; ICDS: Intensive Care Delirium Screening Checklist; ICU: Intensive Care Unit; K-10: Kessler-10; NCT: National Clinical Trial; PHQ-9: Patient Health Questionnaire-9 Item; PLC: Peter Lougheed Centre; RASS: Richmond Agitation and Sedation Scale; REB: Research Ethics Board; RGH: Rockyview General Hospital; SHC: South Health Campus; SOFA: Sequential Organ Failure Assessment; SPIRIT: Standard Protocol Items: Recommendations for Interventional Trials

Acknowledgements

Not applicable.

Authors' contributions

KMF made substantial contributions to the conception and design of the work and drafted the work, approved the submitted version, and agrees both to be personally accountable for the author's own contributions and to ensure that questions related to the accuracy or integrity of any part of the work, even ones in which the author was not personally involved, are appropriate investigated, resolved, and the resolution documented in the literature. KDK, BGS, JED, EWE, and HTS made substantial contributions to the conception and design of the work and substantively revised this work, approved the submitted version, and agree both to be personally accountable for the author's own contributions and to ensure that questions related to the accuracy or integrity of any part of the work, even ones in which the author was not personally involved, are appropriate investigated, resolved, and the resolution documented in the literature. KLS and AS made substantial contributions to the design of the work and substantively revised this work, approved the submitted version, and agree both to be personally accountable for the author's own contributions and to ensure that questions related to the accuracy or integrity of any part of the work, even ones in which the author was not personally involved, are appropriate investigated, resolved, and the resolution documented in the literature. KMF drafted the first version of the protocol. All authors contributed to refinement of the study protocol and approved the final manuscript.

Funding

This study is funded by the Canadian Institutes of Health Research (TC1-165722). The Canadian Institutes of Health Research has no role in the study design; data collection, management, analysis, or interpretation; writing of this or future reports; the decision to submit for publication; or ultimate authority over any of these activities.

Availability of data and materials

The study protocol is registered on clinicaltrials.gov (NCT04099472) and data and statistical code will be shared given reasonable requests to the corresponding author.

Ethics approval and consent to participate

This study was granted ethical approval for all trial sites by the University of Calgary Conjoint Health Research Ethics Board (REB19-1000). Patients will be asked to provide informed consent to participate (surrogate consent possible) (Additional file 1). Surrogate consent will only be considered if a patient does not have capacity to consent to participate, which will be determined by the bedside nurse or physician. If the patient regains capacity, regained capacity consent will be obtained.

Consent for publication

Not applicable.

Competing interests

The authors declare that they have no competing interests.

Author details

¹Department of Critical Care Medicine, University of Calgary & Alberta Health Services, Calgary, Canada. ²Department of Community Health Sciences & O'Brien Institute of Public Health, University of Calgary, Calgary, Canada. ³Department of Psychiatry & Hotchkiss Brain Institute, University of Calgary, Calgary, Canada. ⁴Department of Psychiatry, UC San Diego School of Medicine, San Diego, California, USA. ⁵Tennessee Valley Veteran's Affairs Geriatric Research Education Clinical Center (VA GRECC), Critical Illness, Brain Dysfunction, and Survivorship (CIBS) Center, Vanderbilt University Medical Center, Nashville, TN, USA.

Received: 23 April 2020 Accepted: 30 April 2020

Published online: 24 May 2020

References

- Finfer S, Vincent JL. Critical care—an all-encompassing specialty. *N Engl J Med*. 2013;369(7):669–70.
- American Psychiatric Association. *Diagnostic and Statistical Manual of Mental Disorders* (5th ed., DSM-5). Washington: American Psychiatric Association; 2013.

3. Ely EW, Inouye SK, Bernard GR, Gordon S, Francis J, May L, et al. Delirium in mechanically ventilated patients: validity and reliability of the confusion assessment method for the intensive care unit (CAM-ICU). *Jama*. 2001; 286(21):2703–10.
4. Bergeron N, Dubois MJ, Dumont M, Dial S, Skrobik Y. Intensive care delirium screening checklist: evaluation of a new screening tool. *Intensive Care Med*. 2001;27(5):859–64.
5. Girard TD, Kress JP, Fuchs BD, Thomason JW, Schweickert WD, Pun BT, et al. Efficacy and safety of a paired sedation and ventilator weaning protocol for mechanically ventilated patients in intensive care (awakening and breathing controlled trial): a randomised controlled trial. *Lancet*. 2008;371(9607):126–34.
6. Pandharipande PP, Pun BT, Herr DL, Maze M, Girard TD, Miller RR, et al. Effect of sedation with dexmedetomidine vs lorazepam on acute brain dysfunction in mechanically ventilated patients: the MENDS randomized controlled trial. *JAMA*. 2007;298(22):2644–53.
7. Pandharipande P, Cotton BA, Shintani A, Thompson J, Pun BT, Morris JA Jr, et al. Prevalence and risk factors for development of delirium in surgical and trauma intensive care unit patients. *J Trauma*. 2008;65(1):34–41.
8. Guenther U, Popp J, Koecher L, Muders T, Wrigge H, Ely EW, et al. Validity and reliability of the CAM-ICU Flowsheet to diagnose delirium in surgical ICU patients. *J Crit Care*. 2010;25(1):144–51.
9. Thomason JWW, Shintani A, Peterson JF, Pun BT, Jackson JC, Ely EW. Intensive care unit delirium is an independent predictor of longer hospital stay: a prospective analysis of 261 non-ventilated patients. *Crit Care*. 2005;9(4):R375–R81.
10. Ely EW, Shintani A, Truman B, Speroff T, Gordon SM, Harrell FE Jr, et al. Delirium as a predictor of mortality in mechanically ventilated patients in the intensive care unit. *Jama*. 2004;291(14):1753–62.
11. Pandharipande PP, Girard TD, Jackson JC, Morandi A, Thompson JL, Pun BT, et al. Long-term cognitive impairment after critical illness. *N Engl J Med*. 2013;369(14):1306–16.
12. Brummel NE, Jackson JC, Pandharipande PP, Thompson JL, Shintani AK, Dittus RS, et al. Delirium in the ICU and subsequent long-term disability among survivors of mechanical ventilation. *Crit Care Med*. 2014;42(2):369–77.
13. Davidson JE, Jones C, Bienvenu OJ. Family response to critical illness: postintensive care syndrome-family. *Crit Care Med*. 2012;40(2):618–24.
14. Khan BA, Golovyan D, Campbell C, Serrano P, Khan SH, Wang S. Aging, delirium, and post-intensive care syndrome: novel treatments and future directions. *Am J Geriatr Psychiatry*. 2019;27(3):s27–28.
15. Cameron JI, Chu LM, Matte A, Tomlinson G, Chan L, Thomas C, et al. One-year outcomes in caregivers of critically ill patients. *N Engl J Med*. 2016; 374(19):1831–41.
16. Jabre P, Belpomme V, Azoulay E, Jacob L, Bertrand L, Lapostolle F, et al. Family presence during cardiopulmonary resuscitation. *N Engl J Med*. 2013; 368(11):1008–18.
17. Lautrette A, Darmon M, Megarbane B, Joly LM, Chevret S, Adrie C, et al. A communication strategy and brochure for relatives of patients dying in the ICU. *N Engl J Med*. 2007;356(5):469–78.
18. Schneiderman LJ, Gilmer T, Teetzel HD, Dugan DO, Blustein J, Cranford R, et al. Effect of ethics consultations on nonbeneficial life-sustaining treatments in the intensive care setting: a randomized controlled trial. *JAMA*. 2003;290(9):1166–72.
19. Davidson JE, Daly BJ, Agan D, Brady NR, Higgins PA. Facilitated sensemaking: a feasibility study for the provision of a family support program in the intensive care unit. *Crit Care Nurs Q*. 2010;33(2):177–89.
20. Davidson JE. Facilitated sensemaking: a new mid-range theory for family support in the ICU. *Crit Care Nurse*. 2010;30:28–39.
21. Davidson JE, Zisook S. Implementing family-centered care through facilitated sensemaking. *AACN Adv Crit Care*. 2017;28(2):200–9.
22. Adams S, Herrera A 3rd, Miller L, Soto R. Visitation in the intensive care unit: impact on infection prevention and control. *Crit Care Nurs Q*. 2011;34(1):3–10.
23. Bishop SM, Walker MD, Spivak IM. Family presence in the adult burn intensive care unit during dressing changes. *Crit Care Nurse*. 2013;33(1):14–24.
24. Fumagalli S, Boncinelli L, Lo Nostro A, Valoti P, Baldereschi G, Di Bari M, et al. Reduced cardiocirculatory complications with unrestricted visiting policy in an intensive care unit: results from a pilot, randomized trial. *Circulation*. 2006;113(7):946–52.
25. DuPree E, Fritz-Campiz A, Musheno D. A new approach to preventing falls with injuries. *J Nurs Care Qual*. 2014;29(2):99–102.
26. Gill M, Bagshaw SM, McKenzie E, Oxland P, Oswell D, Boulton D, et al. Patient and family member-led research in the intensive care unit: a novel approach to patient-centered research. *PLoS One*. 2016;11(8):e0160947.
27. Stelfox HT, Niven DJ, Clement FM, Bagshaw SM, Cook DJ, McKenzie E, et al. Stakeholder engagement to identify priorities for improving the quality and value of critical care. *PLoS One*. 2015;10(10):e0140141.
28. McKenzie E, Potestio M, Boyd J, et al. Reconciling patient and provider priorities for improve the care of critically ill patients: a consensus method. *Health Expect*. 2017;20(6):1367–74.
29. Canadian ICU Collaborative. "PAD your ICU" National Improvement Initiative 2016 [Available from: <http://www.patientsafetyinstitute.ca/en/Events/ICU-Collaborative-Pain-Agitation-Delirium/Pages/default.aspx>].
30. Barr J, Fraser GL, Puntillo K, Ely EW, Gelinas C, Dasta JF, et al. Clinical practice guidelines for the management of pain, agitation, and delirium in adult patients in the intensive care unit. *Crit Care Med*. 2013;41(1):263–306.
31. Brummel NE, Vasilevskis EE, Han JH, Boehm L, Pun BT, Ely EW. Implementing delirium screening in the ICU: secrets to success. *Crit Care Med*. 2013;41(9): 2196–208.
32. Bigatello LM, Amirfarzan H, Haghighi AK, Newhouse B, Del Rio JM, Allen K, et al. Effects of routine monitoring of delirium in a surgical/trauma intensive care unit. *J Trauma Acute Care Surg*. 2013;74(3):876–83.
33. Devlin JW, Skrobik Y, Gelinas C, Needham DM, Alhazzani W. Clinical practice guidelines for the prevention and management of pain, agitation/sedation, delirium, immobility, and sleep disruption in adult patients in the ICU. *Crit Care Med*. 2019;46(9):e825–e73.
34. Stevens RD, Nyquist PA. Types of brain dysfunction in critical illness. *Neurol Clin*. 2008;26(2):469–86 ix.
35. Tonelli MR, Misak CJ. Compromised autonomy and the seriously ill patient. *Chest*. 2010;137(4):926–31.
36. Canadian Institutes of Health Research. Strategy for Patient-Oriented Research- Patient Engagement Framework 2019 [Available from: www.cihr-irsc.gc.ca/e/48413.html].
37. Potestio ML, Boyd JM, Bagshaw SM, Heyland D, Oxland P, Doig CJ, et al. Engaging the public to identify opportunities to improve critical care: a qualitative analysis of an open community forum. *PLoS One*. 2015;10(11):e0143088.
38. Farrier CE, Stelfox HT, Fiest KM. In the pursuit of partnership: patient and family engagement in critical care medicine. *Curr Opin Crit Care*. 2019;25: 505–10.
39. Krewulak KD, Sept BG, Stelfox HT, Ely EW, Davidson JE, Ismail Z, et al. Feasibility and acceptability of family administration of delirium detection tools in the intensive care unit: a patient-oriented pilot study. *CMAJ open*. 2019;7(2):E294–e9.
40. Brundin-Mather R, Soo A, Zuege DJ, Niven DJ, Fiest K, Doig CJ, et al. Secondary EMR data for quality improvement and research: a comparison of manual and electronic data collection from an integrated critical care electronic medical record system. *J Crit Care*. 2018;47:295–301.
41. Shulman RW, Kalra S, Jiang JZ. Validation of the sour seven questionnaire for screening delirium in hospitalized seniors by informal caregivers and untrained nurses. *BMC Geriatr*. 2016;16:44.
42. Fiest KM, Krewulak K, Ely EW, Davidson JE, Ismail Z, Stelfox HT. Partnering with family members to detect delirium in critically ill patients. *Crit Care Med*. 2020. <https://doi.org/10.1097/CCM.0000000000004367>.
43. Bull MJ, Avery JS, Boaz L, Oswald D. Psychometric properties of the family caregiver delirium knowledge questionnaire. *Res Gerontol Nurs*. 2015;8(4): 198–207.
44. Krewulak KD, Bull MJ, Ely EW, Stelfox HT, Fiest KM. Psychometric evaluation of the family caregiver ICU delirium knowledge questionnaire. *BMC Health Serv Res*. 2020;20(1):116.
45. Rosgen B, Krewulak K, Demiantschuk D, Ely EW, Davidson JE, Stelfox HT, et al. Validation of caregiver-centered delirium detection tools: a systematic review. *J Am Geriatr Soc*. 2018;66(6):1218–25.
46. Steis MR, Evans L, Hirschman KB, Hanlon A, Fick DM, Flanagan N, et al. Screening for delirium using family caregivers: convergent validity of the family confusion assessment method and interviewer-rated confusion assessment method. *J Am Geriatr Soc*. 2012;60(11):2121–6.
47. Molter NC. Needs of relatives of critically ill patients: a descriptive study. *Heart Lung*. 1979;8(2):332–9.
48. Molter N LJ. Critical care family needs inventory. [updated 1983. Available from: www.uwm.edu/nursing/wp-content/uploads/sites/287/2015/05/Lesketool.pdf].
49. Seid M, Sobo EJ, Gelhard LR, Varni JW. Parents' reports of barriers to care for children with special health care needs: development and validation of the barriers to care questionnaire. *Ambul Pediatr*. 2004;4(4):323–31.

50. Seid M, Opiipari-Arrigan L, Gelhard LR, Varni JW, Driscoll K. Barriers to care questionnaire: reliability, validity, and responsiveness to change among parents of children with asthma. *Acad Pediatr*. 2009;9(2):106–13.
51. Litt MD, Kadden RM, Cooney NL, Kabela E. Coping skills and treatment outcomes in cognitive-behavioral and interactional group therapy for alcoholism. *J Consult Clin Psychol*. 2003;71(1):118–28.
52. Sessler CN, Gosnell MS, Grap MJ, Brophy GM, O'Neal PV, Keane KA, et al. The Richmond agitation-sedation scale: validity and reliability in adult intensive care unit patients. *Am J Respir Crit Care Med*. 2002;166(10):1338–44.
53. Spitzer RL, Kroenke K, Williams JB, Lowe B. A brief measure for assessing generalized anxiety disorder: the GAD-7. *Arch Intern Med*. 2006;166(10):1092–7.
54. Kroenke K, Spitzer RL, Williams JB. The PHQ-9: validity of a brief depression severity measure. *J Gen Intern Med*. 2001;16(9):606–13.
55. Kessler RC, Barker PR, Colpe LJ, Epstein JF, Gfroerer JC, Hiripi E, et al. Screening for serious mental illness in the general population. *Arch Gen Psychiatry*. 2003;60(2):184–9.
56. Racine AM, D'Aquila M, Schmitt EM, Gallagher J, Marcantonio ER, Jones RN, et al. Delirium burden in patients and family caregivers: development and testing of new instruments. *Gerontologist*. 2019;59:e393–402.
57. Chan AW, Tetzlaff JM, Altman DG, Laupacis A, Gotzsche PC, Krle AJK, et al. SPIRIT 2013 statement: defining standard protocol items for clinical trials. *Rev Panam Salud Publica*. 2015;38(6):506–14.
58. Smithburger PL, Korenoski AS, Kane-Gill SL, Alexander SA. Perceptions of family members, nurses, and physicians on involving patients' families in delirium prevention. *Crit Care Nurse*. 2017;37(6):48–57.
59. Smithburger PL, Korenoski AS, Alexander SA, Kane-Gill SL. Perceptions of families of intensive care unit patients regarding involvement in delirium-prevention activities: a qualitative study. *Crit Care Nurse*. 2017;37(6):e1–9.
60. Black P, Boore JR, Parahoo K. The effect of nurse-facilitated family participation in the psychological care of the critically ill patient. *J Adv Nurs*. 2011;67(5):1091–101.

Publisher's Note

Springer Nature remains neutral with regard to jurisdictional claims in published maps and institutional affiliations.

Ready to submit your research? Choose BMC and benefit from:

- fast, convenient online submission
- thorough peer review by experienced researchers in your field
- rapid publication on acceptance
- support for research data, including large and complex data types
- gold Open Access which fosters wider collaboration and increased citations
- maximum visibility for your research: over 100M website views per year

At BMC, research is always in progress.

Learn more biomedcentral.com/submissions

