

First insights into the diversity of gill monogeneans of ‘*Gnathochromis*’ and *Limnochromis* (Teleostei, Cichlidae) in Burundi: do the parasites mirror host ecology and phylogenetic history?

Nikol Kmentová¹, Milan Gelnar¹, Stephan Koblmüller^{2,3} and Maarten P.M. Vanhove^{1,4,5,6}

¹Department of Botany and Zoology, Masaryk University, Brno, Czech Republic

²Institute of Zoology, University of Graz, Graz, Austria

³Institute of Vertebrate Biology, Academy of Sciences of the Czech Republic, Brno, Czech Republic

⁴Biology Department, Royal Museum for Central Africa, Tervuren, Belgium

⁵Laboratory of Biodiversity and Evolutionary Genomics, Department of Biology, University of Leuven, Leuven, Belgium

⁶Capacities for Biodiversity and Sustainable Development, Royal Belgian Institute of Natural Sciences, Brussels, Belgium

ABSTRACT

Monogenea is one of the most species-rich groups of parasitic flatworms worldwide, with many species described only recently, which is particularly true for African monogeneans. For example, *Cichlidogyrus*, a genus mostly occurring on African cichlids, comprises more than 100 nominal species. Twenty-two of these have been described from Lake Tanganyika, a famous biodiversity hotspot in which many vertebrate and invertebrate taxa, including monogeneans, underwent unique and spectacular radiations. Given their often high degrees of host specificity, parasitic monogeneans were also used as a potential tool to uncover host species relationships. This study presents the first investigation of the monogenean fauna occurring on the gills of endemic ‘*Gnathochromis*’ species along the Burundese coastline of Lake Tanganyika. We test whether their monogenean fauna reflects the different phylogenetic position and ecological niche of ‘*Gnathochromis*’ *pfefferi* and *Gnathochromis permaxillaris*. Worms collected from specimens of *Limnochromis auritus*, a cichlid belonging to the same cichlid tribe as *G. permaxillaris*, were used for comparison. Morphological as well as genetic characterisation was used for parasite identification. In total, all 73 *Cichlidogyrus* individuals collected from ‘*G.*’ *pfefferi* were identified as *C. irenae*. This is the only representative of *Cichlidogyrus* previously described from ‘*G.*’ *pfefferi*, its type host. *Gnathochromis permaxillaris* is infected by a species of *Cichlidogyrus* morphologically very similar to *C. gillardinae*. The monogenean species collected from *L. auritus* is considered as new for science, but sample size was insufficient for a formal description. Our results confirm previous suggestions that ‘*G.*’ *pfefferi* as a good disperser is infected by a single monogenean species across the entire Lake Tanganyika. Although *G. permaxillaris* and *L. auritus* are placed in the same tribe, *Cichlidogyrus* sp. occurring on *G. permaxillaris* is morphologically more similar to *C. irenae* from ‘*G.*’ *pfefferi*, than to the *Cichlidogyrus* species found on *L. auritus*. Various evolutionary processes, such as host-switching or duplication events, might underlie the pattern observed in

Submitted 2 November 2015

Accepted 5 January 2016

Published 25 January 2016

Corresponding author

Nikol Kmentová,
kmentovan@mail.muni.cz

Academic editor

María Ángeles Esteban

Additional Information and
Declarations can be found on
page 11

DOI 10.7717/peerj.1629

© Copyright

2016 Kmentová et al.

Distributed under

Creative Commons CC-BY 4.0

OPEN ACCESS

this particular parasite-host system. Additional samples for the *Cichlidogyrus* species occurring on *G. permaxillaris* and *L. auritus* are needed to unravel their evolutionary history by means of (co-)phylogenetic analyses.

Subjects Fisheries and Fish Science, Biodiversity, Parasitology

Keywords *Cichlidogyrus*, Lake Tanganyika, Ectoparasites, Limnochromini, Tropheini

INTRODUCTION

Cichlid fishes (Cichlidae) are considered an ideal study system for evolutionary biologists because of their remarkable species richness, high rates of speciation and often high levels of endemism, derived from diverse speciation and adaptive radiation processes (Salzburger *et al.*, 2005; Turner, 2007; Muschick, Indermaur & Salzburger, 2012). Studies about cichlid adaptation mechanisms provided important information, generally applicable in evolutionary biology (Kocher, 2004; Koblmüller, Seif & Sturmbauer, 2008). Cichlids range from Central and South America, across Africa, Iran, the Middle East and Madagascar to India and Sri Lanka, but most species are concentrated in the Neotropics and in Africa (Chakrabarty, 2004). A place famous for its extraordinary cichlid diversity is Lake Tanganyika in East Africa (Koblmüller, Seif & Sturmbauer, 2008). It is considered a prime study area for evolutionary research as its cichlids show the greatest diversity in speciation mechanisms of all the African Great Lakes' cichlid fishes (Salzburger *et al.*, 2002; Salzburger, 2009). In Lake Tanganyika, there are more than 200 described cichlid species belonging to 53 genera (Snoeks, 2000; Takahashi, 2003; Koblmüller, Seif & Sturmbauer, 2008), usually classified into 15 tribes (Takahashi, 2003; Takahashi, 2014).

Although cichlids have been subjects of interest for many decades, there are still gaps in the understanding of their phylogenetic history and taxonomy (Koblmüller, Seif & Sturmbauer, 2008). According to recent molecular findings, the two species of 'Gnathochromis', *G. permaxillaris* (LR David, 1936) and '*G.* pfefferi' (GA Boulenger, 1898) belong to different cichlid tribes (Limnochromini and Tropheini, respectively) and their classification therefore needs revision (Salzburger *et al.*, 2002; Duftner, Koblmüller & Sturmbauer, 2005; Koblmüller *et al.*, 2010; Muschick, Indermaur & Salzburger, 2012; Kirchberger *et al.*, 2014). A possible source for a better understanding of cichlid taxonomy and phylogeny, and a particularly diverse group of organisms in Lake Tanganyika, are monogenean parasites (Mendlová *et al.*, 2012; Vanhove *et al.*, 2015; Van Steenberge *et al.*, 2015). Monogenea P-J Van Beneden, 1858 is a group of parasitic flatworms mainly occurring on fish gills, skin and fins (Pugachev *et al.*, 2009). These often tiny animals have a direct life cycle, and relatively strong host specificity was reported on cichlid hosts (Pariselle & Euzet, 2009; Gillardin *et al.*, 2012; Muterezi Bukinga *et al.*, 2012; Řehulková, Mendlová & Šimková, 2013), which makes them an ideal model for investigating co-evolutionary processes in host-parasite systems (Pouyaud *et al.*, 2006). While there is no published data available for the monogenean fauna on any of the tribe members of Limnochromini, there is a pretty good record regarding the *Cichlidogyrus* diversity on the

various species within Tropheini, with a high degree of host specificity and phylogenetic congruence (Vanhove et al., 2015). ‘*Gnathochromis*’ *pfefferi*, *Limnotilapia dardennii* (GA Boulenger, 1899) and ‘*Ctenochromis*’ *horei* (A Günther, 1894) are infected by a single dactylogyridean monogenean species each: *Cichlidogyrus irenae*, *C. steenbergei* and *C. gistelincki* C Gillardin, MPM. Vanhove, A Pariselle et al., 2012, respectively (Gillardin et al., 2012). *Astatotilapia burtoni* (A Günther 1894), a haplochromine cichlid closely related to the Tropheini (Koblmüller et al., 2008; Meyer, Matschiner & Salzburger, 2015), is infected by *C. gillardinae* F Muterezi Bukinga, MPM Vanhove, M Van Steenberge et al., 2012 (Muterezi Bukinga et al., 2012). These observations are hitherto only based on reports from several localities along the Congolese, Tanzanian and Zambian coasts of the lake (Gillardin et al., 2012; Muterezi Bukinga et al., 2012; Vanhove et al., 2015). Thorough sampling covering as many host localities as possible is, however, needed to conclude about the full extent of a species’ parasite fauna (Price & Clancy, 1983; Brooks et al., 2006; Caro, Combes & Euzet, 1997).

As mentioned above, ‘*Gnathochromis*’ is a polyphyletic genus and no comparison of the parasite fauna of its two species has been performed to date. Do the parasites reflect the phylogenetic position and ecological characteristics of their hosts? We investigated the monogenean fauna of both ‘*Gnathochromis*’ species to answer the following questions:

- (1) Does the Burundese population of ‘*G.*’ *pfefferi* confirm that this host is only infected by a single species of *Cichlidogyrus*?
- (2) Since ‘*Gnathochromis*’ is considered polyphyletic, is the phylogenetic distinctness of its two representatives also reflected in their parasite fauna?

MATERIAL & METHODS

Sampling

Fish specimens were obtained from commercial fishermen along the Burundese coastline of Lake Tanganyika. Two ‘*G.*’ *pfefferi* individuals from Mvugo (4° 15’ S, 29° 34’ E) and four from Mukuruka (4° 14’ S, 29° 33’ E) were examined, as well as seven *G. permaxillaris* and six *Limnochromis auritus* (GA Boulenger, 1901) individuals from Bujumbura (3° 23’ S 29° 22’ E) (Fig. 1). Maps were created using SimpleMappr software (Shorthouse, 2010). The latter species was included to allow a comparison between the monogeneans of *G. permaxillaris* and another member of the Limnochromini, a tribe from which no monogeneans have been described previously. Fish were sacrificed by severing the spinal cord and dissected immediately. Gills were removed according to the standard protocol of Ergens & Lom (1970) and immediately preserved in pure ethanol in plastic tubes until further inspection in the lab. Some fresh gills were also inspected *in situ* for monogenean parasites using dissecting needles and a stereomicroscope. Slides prepared *in situ* were fixed in glycerine ammonium picrate (GAP) (Malmberg, 1957) or in Hoyer’s solution (Humason, 1979). Monogeneans were isolated in the lab using a dissecting needle and an Olympus SZX7 stereomicroscope. They were mounted on a slide under a cover slip. Parasite individuals used for genetic characterisation were identified using an Olympus BX51 microscope with incorporated phase contrast at a magnification of

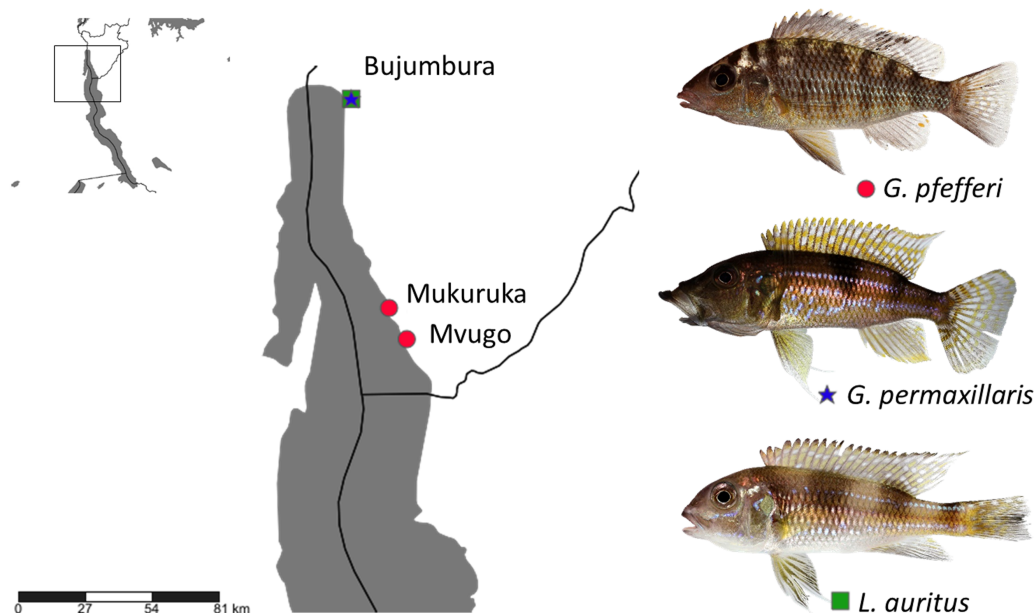


Figure 1 Sampling localities in Lake Tanganyika with indication of host species (photos by Wolfgang Gessl).

100× (oil immersion, 10× ocular) with Micro Image software and photographed for *post hoc* confirmation of species identity. They were stored in 1.2 ml Eppendorf tubes with 99.8% ethanol for subsequent DNA isolation. The research was approved by the Ethics Committee of Masaryk University. The approval number which allows us to work with vertebrate animals is CZ01308.

Morphometrics

The morphometric characterisation was based on 26 different metrics measured according to Řehulková, Mendlová & Šimková (2013) and Gillardin *et al.* (2012). Measurements and photos were taken using the same configuration as above. In some cases an extra magnification of 2× had to be used. Voucher specimens were deposited in the invertebrate collection of the Royal Museum for Central Africa (Tervuren, Belgium) under accession numbers MRAC 37792-802.

DNA extraction and genetic characterisation

Ethanol was removed by evaporation in a vacuum centrifuge. DNA was extracted using the Qiagen Blood and Tissue Isolation Kit according to the manufacturer's instructions with some modifications (samples in ATL buffer (180 µl) with protein kinase (20 µl) were kept in 1.5 ml Eppendorf tubes overnight at room temperature). The DNA extract was then concentrated to a volume of 80 µl in 1.5 ml Eppendorf tubes using a vacuum centrifuge and stored at a temperature of −20 °C until polymerase chain reaction amplification. Part of the 18S nuclear ribosomal DNA gene, together with the first Internal Transcribed Spacer (ITS-1) region was amplified for 5 individuals using the S1 (5'-ATTCCGATAACGAACGAGACT-3') (Sinnappah *et al.*, 2001) and IR8

(5'-GCAGCTGCGTTCTTCATCGA-3') (Šimková *et al.*, 2003) primers. Each amplification reaction contained 1.5 unit of *Taq* Polymerase, 1X buffer containing 0.1 mg/ml BSA, 1.5 mM MgCl₂, 200 mM dNTPs, 0.5 mM of each primer and 30 ng of genomic DNA in a total reaction volume of 30 µl under the following conditions: 2 min at 94 °C, 39 cycles of 1 min at 94 °C, 1 min at 53 °C and 1 min and 30 s at 72 °C, and finally 10 min at 72 °C. The obtained nucleic acid sequences were aligned using MUSCLE (Edgar, 2004) under default distance measures and sequence weighting schemes as implemented in MEGA 6.06 (Tamura *et al.*, 2013), together with previously published sequences of *Cichlidogyrus* from '*G.*' *pfefferi* (GenBank accession numbers [KT037169](#), [KT037170](#), [KT037171](#), [KT037172](#), [KT037173](#); Vanhove *et al.*, 2015). Sequences and their alignment were visually inspected and corrected using the same software. Uncorrected pairwise distances were calculated in MEGA. The newly obtained haplotype sequence was deposited in NCBI GenBank under accession number [KT692939](#).

RESULTS

All 73 adult monogeneans collected from '*G.*' *pfefferi* specimens were identified as *C. irenae* following the original description of Gillardin *et al.* (2012). The prevalence was 83.3%, mean infection intensity 18.2 and mean abundance 15.1 (calculated using adult monogeneans only). Although there are slight differences visible, mainly in the dorsal anchors and the attachment of the accessory piece to the base of the copulatory tube, our set of measurements matches with the original description of *C. irenae* (Gillardin *et al.*, 2012) (Table 1). Differences in heel length are caused by different metrics (measuring up to the base of the heel *versus* to the base of the copulatory tube).

Only one specimen of *G. permaxillaris* was infected by monogeneans. It carried a single representative of a species of *Cichlidogyrus* similar in morphology to *C. gillardinae* parasitizing on *Astatotilapia burtoni*. Unfortunately, we cannot confidently confirm conspecificity based on only one specimen and therefore we refer to it as *C. cf. gillardinae*. Its pairs of anchors are asymmetrical: the dorsal anchor has a much longer guard than shaft while in the ventral anchor, guard and shaft are equal in size. The auricles and ventral bar branches are relatively short. Its male copulatory organ is characterised by a short heel, a simple copulatory tube with constant diameter and an accessory piece with easily overlooked distal bulb. No sclerotized vagina was observed. Despite these similarities with *C. gillardinae*, some differences compared to the original description were noted, e.g., *Cichlidogyrus cf. gillardinae* from *G. permaxillaris* has a more slender heel and shorter ventral anchor roots (Table 2).

Two monogenean specimens of an undescribed species of *Cichlidogyrus* were collected from one individual of *L. auritus*. One of the most noticeable structures within this parasite's haptor are the extremely long auricles of the dorsal transverse bar. There is no visible difference between the length of guard and shaft in any of the anchors. The copulatory tube is thin with a constant diameter; a heel was not recognized. The accessory piece is robust and thick with a fork-shaped ending. No sclerotized vagina was observed. In view of the remarkably long auricles, this species morphologically resembles *C. vanderkervei* and *C. makasai* MPM Vanhove, F Volckaert and A Pariselle, 2011 described

Table 1 Comparison of measurements (in μm) on Burundese *Cichlidogyrus irenae* with the original description.

	<i>C. irenae</i> from Burundi ($n = 30^a$)	<i>C. irenae</i> (Gillardin et al., 2012)
Ventral anchor		
Total length	30.3 ± 2.3^b ($n = 28^c$); (26.9–36.4) ^d	31.4 ± 1.6 ($n = 14$); (29.3–34.6)
Length to notch	25.7 ± 0.9 ($n = 25$); (22.6–29.8)	28.5 ± 1.4 ($n = 14$); (26.1–30.2)
Inner root length	8.7 ± 1.7 ($n = 24$); (5.6–10.8)	8.1 ± 1.3 ($n = 14$); (5.9–10.1)
Outer root length	5.5 ± 0.7 ($n = 18$); (4.9–6.8)	5.4 ± 1.2 ($n = 14$); (3.2–7.8)
Point length	8.5 ± 1.1 ($n = 25$); (6.9–10.4)	10.0 ± 1.5 ($n = 14$); (7.9–12.8)
Dorsal anchor		
Total length	30.5 ± 2.6 ($n = 22$); (27–37.5)	35.0 ± 2.8 ($n = 15$); (30.0–38.5)
Length to notch	21.8 ± 1.1 ($n = 16$); (19.8–23.9)	25.8 ± 1.6 ($n = 15$); (22.4–28.8)
Inner root length	10.6 ± 1.3 ($n = 16$); (7.9–13.4)	12.3 ± 1.5 ($n = 15$); (9.6–14.7)
Outer root length	5.3 ± 0.9 ($n = 16$); (4.1–7.2)	4.6 ± 0.7 ($n = 15$); (3.6–5.9)
Point length	7.1 ± 1 ($n = 12$); (5.7–8.7)	9.1 ± 1.0 ($n = 15$); (6.9–11.1)
Ventral bar		
Branch length	38.4 ± 4.4 ($n = 22$); (32–49.5)	31.6 ± 4.6 ($n = 15$); (24.8–39.5)
Branch maximum width	6 ± 0.9 ($n = 28$); (3.6–8.1)	4.8 ± 0.9 ($n = 15$); (3.2–6.5)
Dorsal bar		
Maximum straight width	40.1 ± 4.1 ($n = 14$); (35–48.6)	32.7 ± 7.0 ($n = 15$); (17.9–45.8)
Thickness at middle length	7.5 ± 1.2 ($n = 28$); (5.7–10.3)	6.1 ± 1.1 ($n = 15$); (4.2–8.2)
Distance between auricles	15.2 ± 1.9 ($n = 28$); (12.1–18.4)	11.5 ± 1.8 ($n = 15$); (8.3–15.2)
Auricle length	15.3 ± 2.3 ($n = 15$); (12.2–19.9)	14.2 ± 2.4 ($n = 15$); (9.6–19.0)
Hooks		
Pair I	12.3 ± 0.6 ($n = 26$); (11.5–13.2)	11.6 ± 0.4 ($n = 15$); (10.8–12.1)
Pair II	18.5 ± 2.1 ($n = 28$); (14.8–22.8)	–
Pair III	20.6 ± 1.2 ($n = 25$); (18.4–22.2)	–
Pair IV	21.1 ± 1.5 ($n = 25$); (19.4–25)	–
Pair V	10.1 ± 0.9 ($n = 10$); (9.4–12.2)	11.4 ± 0.9 ($n = 15$); (9.2–12.6)
Pair VI	21.4 ± 2.4 ($n = 10$); (16.1–22.8)	–
Pair VII	20.6 ± 3.3 ($n = 18$); (17.5–25.7)	–
Average size of pairs II, III, IV, VI, VII	20.2 ± 2.5 ($n = 105$); (13.3–27.3)	16.3 ± 2.1 ($n = 15$); (11.9–19.3)
Copulatory tube curved length	69.9 ± 5.3 ($n = 30$); (59.3–81.4)	69.5 ± 5.7 ($n = 20$); (48.0–73.3)
Accessory piece curved length	68.8 ± 8.2 ($n = 30$); (54–91)	59.5 ± 5.8 ($n = 20$); (37.8–64.8)
Heel straight length	11.1 ± 3.9 ($n = 30$); (6–12.6)	4.1 ± 0.2 ($n = 20$); (3.6–4.4)

Notes.^aNumber of specimens.^bStandard deviation.^cNumber of specimens.^dRange.

from *Ophthalmotilapia* J Pellegrin, 1904 species. However, there are clear differences in MCO structure. For example, the copulatory tube tapers distally in *C. vandekerkhovei* and *C. makasai*, whereas it is of constant diameter in the undescribed parasite of *L. auritus*.

Micrographs of the collected monogenean species are presented in Fig. 2.

The rDNA dataset included four successfully amplified sequences of parasites collected from '*G.* pfefferi'. Only one haplotype (1,060 base pairs) was recognised. The maximum

Table 2 Comparison of measurements (in μm) on Burundese *Cichlidogyrus* cf. *gillardinae* with the original description.

	<i>C. cf. gillardinae</i> from Burundi ($n = 1$) ^a	<i>C. gillardinae</i> (Muterezi Bukinga et al., 2012) ($n = 30$) ^a
Ventral anchor		
Total length	29.5	32 (27–37)
Length to notch	26	28 (23–32)
Inner root length	6.5	10 (8–13)
Outer root length	3.8	6 (4–9)
Point length	10.8	8 (6–11)
Dorsal anchor		
Total length	31	33 (29–38)
Length to notch	22.5	23 (19–29)
Inner root length	10.5	12 (9–16)
Outer root length	4.6	5 (4–7)
Point length	7.75	7 (5–8)
Ventral bar		
Branch length	29	31 (27–35)
Branch maximum width	3.7	5 (3–6)
Dorsal bar		
Maximum straight width	33	33 (27–39)
Thickness at middle length	6.5	6 (4–8)
Distance between auricles	11.8	12 (9–15)
Auricle length	9.3	11 (8–14)
Hooks		
Pair I	14.5	11 (9–13)
Pair II	13.5	14 (11–17)
Pair III	15.1	21 (18–26)
Pair IV	21.5	22 (19–24)
Pair V	9.5	10 (8–12)
Pair VI	21.5	15 (13–17)
Pair VII	14.1	17 (15–21)
Copulatory tube curved length	51	47 (42–55)
Accessory piece curved length	30	35 (29–42)
Heel straight length	6.5	5 (4–7)

Notes.^aNumber of specimens.

overlap with sequences of more southern parasites of '*G.*' *pfefferi* obtained from GenBank was 571 base pairs, situated within ITS-1. The uncorrected pairwise genetic distance reached a maximum of 0.8%, which is below the species-level cut-off of 1%, suggested for this region for the best-studied monogenean, *Gyrodactylus* A von Nordmann, 1832 (Ziętara & Lumme, 2002). This result confirms the identification, based on morphology and morphometrics, of a single monogenean species infecting '*G.*' *pfefferi*, namely *C. irenae*.

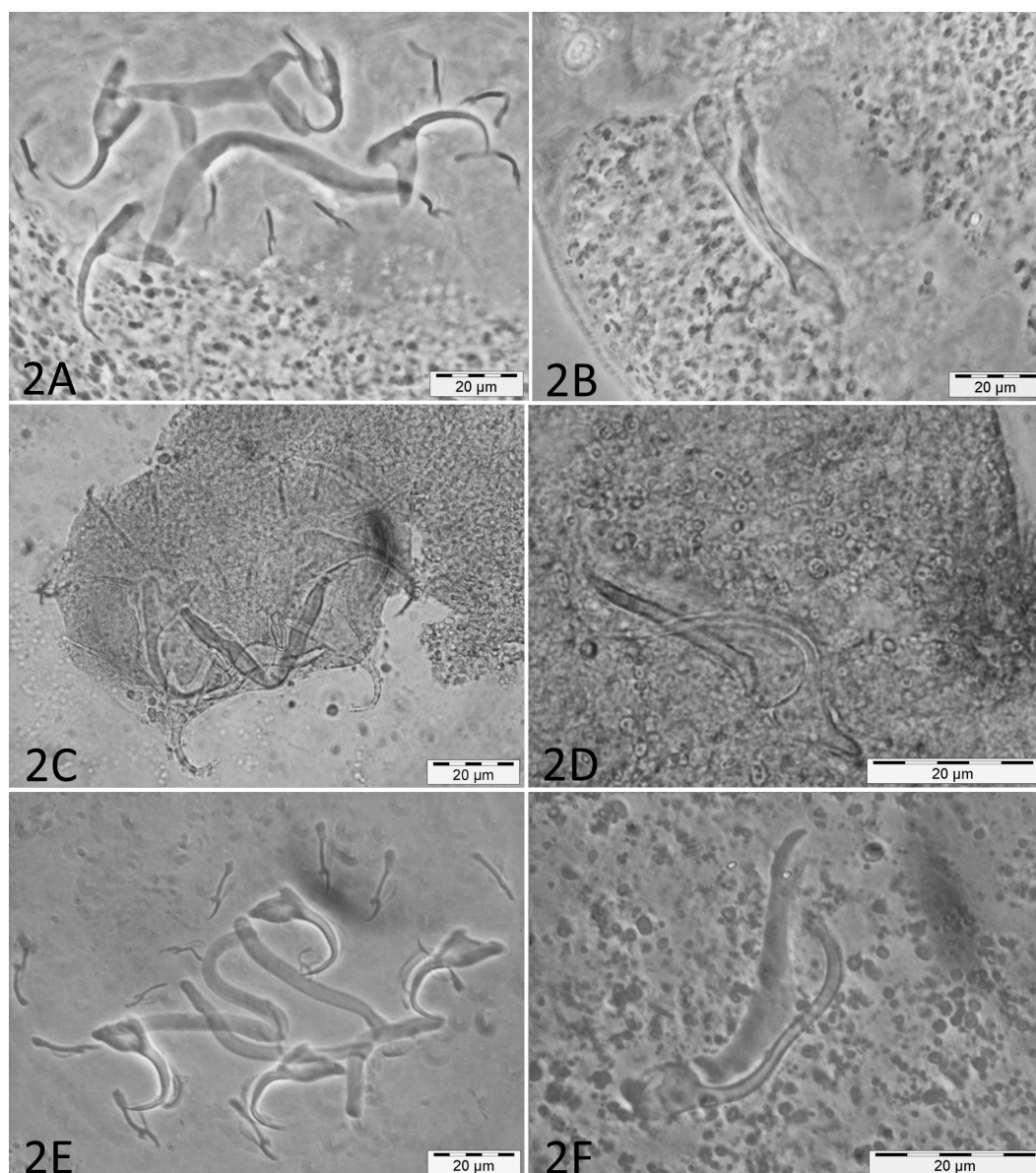


Figure 2 Micrographs of haptoral and male genital sclerotized structures from monogenean species belonging to *Cichlidogyrus*. Host species: (A) '*G.* *pfefferi*' (opisthaptor, Hoyer's medium, phasecontrast); (B) '*G.* *pfefferi*' (MCO, Hoyer's medium, phasecontrast); (C) *G. permaxillaris* (opisthaptor, GAP); (D) *G. permaxillaris* (MCO, GAP); (E) *L. auritus* (opisthaptor, Hoyer's medium, phasecontrast); (F) *L. auritus* (MCO, Hoyer's medium, phasecontrast).

DISCUSSION

The monogenean fauna of the cichlid '*G.* *pfefferi*' in Burundi was characterised morphologically and genetically. We confirmed the occurrence of *C. irenae*, representing the first record of this species in Burundi. According to previous results, the species richness of *Cichlidogyrus* on Tanganyika cichlids is influenced by the dispersal ability or isolation of the host species (Pariselle et al., 2015a; Grégoir et al., 2015). Although some differences

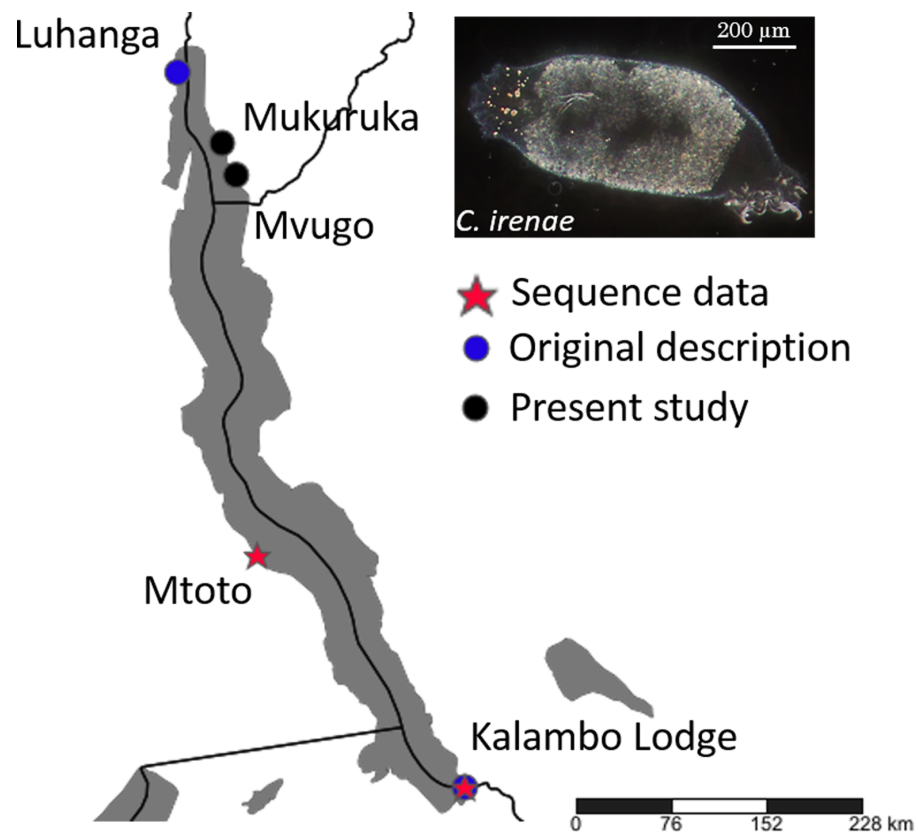


Figure 3 Geographical position of records of *C. irenae*, monogeneans infecting '*G.*' *pfefferi*.

in the size of parasite sclerotized structures were recorded (Table 1), these are only minor and likely reflect phenotypic intraspecific variability across entire Lake Tanganyika. Our results therefore support previous suggestions that '*G.*' *pfefferi*, as a cichlid with good dispersal ability, hosts only a single representative of *Cichlidogyrus*, now recorded from several localities in the northern as well as the southern part of the Lake (Vanhove *et al.*, 2015) (see Fig. 3).

Monogenean parasites belonging to *Cichlidogyrus* were also used as an additional way to look at species interrelationships within '*Gnathochromis*.' The parasite from *G. permaxillaris* was identified as *C. cf. gillardinae*. Since *C. gillardinae* was originally described from the haplochromine *A. burtoni*, a fish occurring in aquatic systems along Lake Tanganyika's shores, it is most likely a generalist parasite infecting representatives of two unrelated cichlid genera with different habitat preferences (Konings, 1998; Muterezi Bukinga *et al.*, 2012). Although the limnochrome *G. permaxillaris* is hence infected by a monogenean species different from *C. irenae* described from '*G.*' *pfefferi*, its parasite seems more similar to its congeners infecting trophaine hosts like '*G.*' *pfefferi* (Gillardin *et al.*, 2012; Pariselle *et al.*, 2015b). *Cichlidogyrus* can be divided into different lineages based on the configuration of their haptor hard parts, in particular the relative length of the pairs of hooks (also termed uncinuli) (Pariselle & Euzet, 2003; Vignon, Pariselle & Vanhove, 2011). Indeed, both parasites' haptor shares important characteristics: asymmetry between anchors, small

(sensu Pariselle & Euzet, 2009) hooks. *Cichlidogyrus* cf. *gillardinae* differs substantially from the *Cichlidogyrus* species collected from the closely related host *L. auritus*, another limnochrome cichlid. In the latter flatworm, the extremely long dorsal bar auricles represent an evident similarity with *C. vandekerkhovei* and *C. makasai* (Vanhove, Volckaert & Pariselle, 2011) collected from species of *Ophthalmotilapia*, belonging to the Ectodini, another cichlid tribe endemic to Lake Tanganyika. This feature was hitherto never found in other monogenean congeners. The gill monogenean retrieved from *Limnochromis* hence seems to belong to an endemic Tanganyika lineage. The discussion about the evolution of the haptoral sclerotized structures is still ongoing. Morand et al. (2002) assume that haptoral structures do not reflect a phylogenetic pattern as a result of adaptation to microhabitat within the host. Moreover, Messu Mandeng et al. (2015) point out an adaptive component in the attachment organ morphology of *Cichlidogyrus*. However, other studies suggest the existence of a phylogenetic signal in sclerite morphology and shape within dactylogyridean monogeneans (Šimková et al., 2002; Šimková et al., 2006) and specifically within *Cichlidogyrus* (Vignon, Pariselle & Vanhove, 2011).

According to Mendlová & Šimková (2014) the host specificity of *Cichlidogyrus* parasitising African cichlid fishes is significantly influenced by fish phylogeny and by form of parental care. No *Cichlidogyrus* species was hitherto observed to infect cichlid species with different parental care systems (i.e., substrate brooders as well as mouthbrooders) (Pouyaud et al., 2006). However, the form of parental care in cichlids is directly influenced by phylogenetic history and relationships (Goodwin, Balshine-Earn & Reynolds, 1998). Possible explanations for the affinities of monogenean species on ‘*Gnathochromis*’ are therefore host evolutionary history as well as habitat characteristics. While ‘*G.*’ *pfefferi* is a typical rock dwelling littoral cichlid occurring at depths between 1 and 15 m, *G. permaxillaris* occurs over muddy bottoms and is rarely seen in water shallower than 30 m (Maréchal & Poll, 1991; Konings, 1998). *Limnochromis auritus* is placed together with *G. permaxillaris* in the Limnochromini and prefers similar habitats with muddy bottoms at depths ranging from 5 to 125 m (Maréchal & Poll, 1991; Konings, 1998). Given that the haplochromine *A. burtoni* occurs in wetlands adjacent to the lake, in river mouths and in vegetated areas in the lake proper, it is unclear how it came to share a species with *G. permaxillaris* from which it differs ecologically and phylogenetically. On the other hand, the deepwater limnochromines *G. permaxillaris* and *L. auritus* seem to host entirely different monogeneans. However, these findings are based on a limited number of specimens (only one specimen of *Cichlidogyrus* collected from *G. permaxillaris*). Due to the lack of genetic data, we cannot perform (co-)phylogenetic analyses. According to Mendlová et al. (2012) duplication and host-switching events have played the most important role in the evolutionary history of African cichlid dactylogyridean species. Vanhove et al. (2015), however, found evidence for an important role of co-speciation in the evolution of *Cichlidogyrus* infecting Lake Tanganyika’s tropheine cichlids. Although representatives of *Cichlidogyrus* occurring on littoral cichlid assemblages including Tropheini display strong host specificity (Gillardin et al., 2012; Muterezi Bukinga et al., 2012; Vanhove et al., 2015), a lower specificity was observed within the Bathibatini, a deepwater cichlid tribe from Lake Tanganyika (Pariselle et al., 2015a). Hence, some lineages of *Cichlidogyrus* in Lake Tanganyika were already

shown to have a wide host range. The observed low host specificity and the apparent low infestation rate most likely correlate with low host density in the deepwater habitat (Justine et al., 2012; Schoelinck, Cruaud & Justine, 2012). Given the low prevalence and infection intensities observed in this study, and the deepwater habitat of the limnochrome hosts, it is a challenge to retrieve additional material for species identification and molecular analyses. These, together with a broadened geographical coverage, are needed to uncover the whole co-phylogenetic history of 'Gnathochromis' and its monogenean fauna.

ACKNOWLEDGEMENTS

We would like to thank Maarten Van Steenberge, Tine Huyse and the parasitology group at Masaryk University, Brno for their hospitality and cooperation. Eva Řehulková, Šárka Mašová, Iva Přikrylová, Radim Blažek, Veronika Nezhybová, Gaspard Banyankimbona and the Schreyen-Brichard family and the technical staff of Fishes of Burundi are thanked for their help in collecting samples, and Wolfgang Gessl for providing fish pictures. Antoine Pariselle, Miguel Rubio-Godoy and an anonymous referee are acknowledged for their constructive comments.

ADDITIONAL INFORMATION AND DECLARATIONS

Funding

This study was financially supported by the Czech Science Foundation (GBP505/12/G112-ECIP). The funders had no role in study design, data collection and analysis, decision to publish, or preparation of the manuscript.

Grant Disclosures

The following grant information was disclosed by the authors:
Czech Science Foundation: GBP505/12/G112-ECIP.

Competing Interests

The authors declare there are no competing interests.

Author Contributions

- Nikol Kmentová conceived and designed the experiments, performed the experiments, analyzed the data, wrote the paper, prepared figures and/or tables.
- Milan Gelnar contributed reagents/materials/analysis tools, reviewed drafts of the paper.
- Stephan Koblmüller analyzed the data, reviewed drafts of the paper.
- Maarten P.M. Vanhove conceived and designed the experiments, analyzed the data, wrote the paper.

Animal Ethics

The following information was supplied relating to ethical approvals (i.e., approving body and any reference numbers):

The research was approved by Ethics Committee of Masaryk University, approval number CZ01308.

DNA Deposition

The following information was supplied regarding the deposition of DNA sequences:
GenBank accession number [KT692939](#).

Data Availability

The following information was supplied regarding data availability:
The research in this article did not generate any raw data.

Supplemental Information

Supplemental information for this article can be found online at <http://dx.doi.org/10.7717/peerj.1629#supplemental-information>.

REFERENCES

- Brooks DR, León-Règagnon V, McLennan DA, Zelmer D. 2006.** Ecological fitting as a determinant of the community structure of platyhelminth parasites of anurans. *Ecology* **87**:76–85 DOI [10.1890/05-0023](#).
- Caro A, Combes C, Euzet L. 1997.** What makes a fish a suitable host for Monogenea in the Mediterranean? *Journal of Helminthology* **71**:203–210 DOI [10.1017/S0022149X00015923](#).
- Chakrabarty P. 2004.** Cichlid biogeography: comment and review. *Fish and Fisheries* **5**:97–119 DOI [10.1111/j.1467-2979.2004.00148.x](#).
- Duftner N, Koblmüller S, Sturmbauer C. 2005.** Evolutionary relationships of the Limnochromini, a tribe of benthic deepwater cichlid fish endemic to Lake Tanganyika, East Africa. *Journal of Molecular Evolution* **60**:277–289 DOI [10.1007/s00239-004-0017-8](#).
- Edgar RC. 2004.** MUSCLE: multiple sequence alignment with high accuracy and high throughput. *Nucleic Acids Research* **32**:1792–1797 DOI [10.1093/nar/gkh340](#).
- Ergens R, Lom J. 1970.** *Causative agents of fish diseases*. Prague: Academia.
- Gillardin C, Vanhove MPM, Pariselle A, Huyse T, Volckaert FAM. 2012.** Ancyrocephalidae (Monogenea) of Lake Tanganyika: II: description of the first *Cichlidogyrus* spp. parasites from Tropheini fish hosts (Teleostei, Cichlidae). *Parasitology Research* **110**:305–313 DOI [10.1007/s00436-011-2490-5](#).
- Goodwin NB, Balshine-Earn S, Reynolds JD. 1998.** Evolutionary transitions in parental care in cichlid fish. *Proceedings of the Royal Society B: Biological Sciences* **265**:2265–2272 DOI [10.1098/rspb.1998.0569](#).
- Grégoir AF, Hablützel PI, Vanhove MPM, Pariselle A, Bamps J, Volckaert FAM, Raeymaekers JAM. 2015.** A link between host dispersal and parasite diversity in two sympatric cichlids of Lake Tanganyika. *Freshwater Biology* **60**:323–335 DOI [10.1111/fwb.12492](#).
- Humason GL. 1979.** *Animal tissue techniques:4th*. San Francisco: Freeman and Company.
- Justine J-L, Beveridge I, Boxshall GA, Bray RA, Miller TL, Moravec F, Trilles J-P, Whittington ID. 2012.** An annotated list of fish parasites (Isopoda, Copepoda, Monogenea, Digenea, Cestoda, Nematoda) collected from Snappers and

- Bream (Lutjanidae, Nemipteridae, Caesionidae) in New Caledonia confirms high parasite biodiversity on coral reef fish. *Aquatic Biosystems* **8**: Article 22 DOI [10.1186/2046-9063-8-22](https://doi.org/10.1186/2046-9063-8-22).
- Kirchberger PC, Sefc KM, Sturmbauer C, Koblmüller S. 2014. Outgroup effects on root position and tree topology in the AFLP phylogeny of a rapidly radiating lineage of cichlid fish. *Molecular Phylogenetics and Evolution* **70**:57–62 DOI [10.1016/j.ympev.2013.09.005](https://doi.org/10.1016/j.ympev.2013.09.005).
- Koblmüller S, Egger B, Sturmbauer C, Sefc KM. 2010. Rapid radiation, ancient incomplete lineage sorting and ancient hybridization in the endemic Lake Tanganyika cichlid tribe Tropheini. *Molecular Phylogenetics and Evolution* **55**:318–334 DOI [10.1016/j.ympev.2009.09.032](https://doi.org/10.1016/j.ympev.2009.09.032).
- Koblmüller S, Schliwen UK, Duftner N, Sefc KM, Katongo C, Sturmbauer C. 2008. Age and spread of the haplochromine cichlid fishes in Africa. *Molecular Phylogenetics and Evolution* **49**:153–169 DOI [10.1016/j.ympev.2008.05.045](https://doi.org/10.1016/j.ympev.2008.05.045).
- Koblmüller S, Sefc KM, Sturmbauer C. 2008. The Lake Tanganyika cichlid species assemblage: recent advances in molecular phylogenetics. *Hydrobiologia* **615**:5–20 DOI [10.1007/s10750-008-9552-4](https://doi.org/10.1007/s10750-008-9552-4).
- Kocher TD. 2004. Adaptive evolution and explosive speciation: the cichlid fish model. *Nature Reviews Genetics* **5**:288–298 DOI [10.1038/nrg1316](https://doi.org/10.1038/nrg1316).
- Konings A. 1998. *Guide to Tanganyika cichlids*. El Paso: Cichlid Press.
- Malmberg G. 1957. On the occurrence of *Gyrodactylus* on Swedish fishes. In: *Skrifter utgivna av Södra Sveriges Fiskeriföreningen Årsskrift*, 19–56.
- Maréchal C, Poll M. 1991. *Gnathochromis, Limnochromis*. In: Daget J, Gosse J-P, Teugels GG, Thys van den Audenaerde DFE, eds. *Checklist of the freshwater fishes of Africa (CLOFFA)*. Tervuren: Royal Museum for Central Africa, 94–95, 243–245.
- Mendlová M, Desdevises Y, Civiňová K, Pariselle A, Šimková A. 2012. Monogeneans of west African cichlid fish: evolution and cophylogenetic interactions. *PLoS ONE* **7**:e37268 DOI [10.1371/journal.pone.0037268](https://doi.org/10.1371/journal.pone.0037268).
- Mendlová M, Šimková A. 2014. Evolution of host specificity in monogeneans parasitizing African cichlid fish. *Parasites & Vectors* **7**: Article 69 DOI [10.1186/1756-3305-7-69](https://doi.org/10.1186/1756-3305-7-69).
- Messu Mandeng FD, Bilong Bilong CF, Pariselle A, Vanhove MPM, Bitja Nyom AR, Agnèse J-F. 2015. A phylogeny of *Cichlidogyrus* species (Monogenea, Dactylogyridea) clarifies a host switch between fish families and reveals an adaptive component to attachment organ morphology of this parasite genus. *Parasites & Vectors* **8**: Article 582 DOI [10.1186/s13071-015-1181-y](https://doi.org/10.1186/s13071-015-1181-y).
- Meyer BS, Matschiner M, Salzburger W. 2015. A tribal level phylogeny of Lake Tanganyika cichlid fishes based on a genomic multi-marker approach. *Molecular Phylogenetics and Evolution* **83**:56–71 DOI [10.1016/j.ympev.2014.10.009](https://doi.org/10.1016/j.ympev.2014.10.009).
- Morand S, Šimková A, Matějusová I, Plaisance L, Verneau O, Desdevises Y. 2002. Investigating patterns may reveal processes: evolutionary ecology of ectoparasitic monogeneans. *International Journal for Parasitology* **32**:111–119 DOI [10.1016/S0020-7519\(01\)00347-2](https://doi.org/10.1016/S0020-7519(01)00347-2).

- Muschick M, Indermaur A, Salzburger W. 2012.** Convergent evolution within an adaptive radiation of cichlid fishes. *Current Biology* **22**:2362–2368 DOI [10.1016/j.cub.2012.10.048](https://doi.org/10.1016/j.cub.2012.10.048).
- Muterezi Bukinga F, Vanhove MPM, Van Steenberge M, Pariselle A. 2012.** Ancyrocephalidae (Monogenea) of Lake Tanganyika: III: *Cichlidogyrus* infecting the world's biggest cichlid and the non-endemic tribes Haplochromini, Oreochromini and Tylochromini (Teleostei, Cichlidae). *Parasitology Research* **111**:2049–2061 DOI [10.1007/s00436-012-3052-1](https://doi.org/10.1007/s00436-012-3052-1).
- Pariselle A, Euzet L. 2003.** Four new species of *Cichlidogyrus* (Monogenea: Ancyrocephalidae), gill parasites of *Tilapia cabrae* (Teleostei: Cichlidae), with discussion on relative length of haptor sclerites. *Folia Parasitologica* **50**:195–201 DOI [10.14411/fp.2003.035](https://doi.org/10.14411/fp.2003.035).
- Pariselle A, Euzet L. 2009.** Systematic revision of dactylogyridean parasites (Monogenea) from cichlid fishes in Africa, the Levant and Madagascar. *Zoosystema* **31**:849–898 DOI [10.5252/z2009n4a6](https://doi.org/10.5252/z2009n4a6).
- Pariselle A, Muterezi Bukinga F, Van Steenberge M, Vanhove MPM. 2015a.** Ancyrocephalidae (Monogenea) of Lake Tanganyika: IV: *Cichlidogyrus* parasitizing species of Bathybatini (Teleostei, Cichlidae): reduced host-specificity in the deepwater realm? *Hydrobiologia* **748**:99–119 DOI [10.1007/s10750-014-1975-5](https://doi.org/10.1007/s10750-014-1975-5).
- Pariselle A, Van Steenberge M, Snoeks J, Volckaert FAM, Huysse T, Vanhove MPM. 2015b.** Ancyrocephalidae (Monogenea) of Lake Tanganyika: does the *Cichlidogyrus* parasite fauna of *Interochromis loocki* (Teleostei, Cichlidae) reflect its host's phylogenetic affinities? *Contributions to Zoology* **84**:25–38.
- Pouyaud L, Desmarais E, Deveney M, Pariselle A. 2006.** Phylogenetic relationships among monogenean gill parasites (Dactylogyridea, Ancyrocephalidae) infesting tilapiine hosts (Cichlidae): systematic and evolutionary implications. *Molecular Phylogenetics and Evolution* **38**:241–249 DOI [10.1016/j.ympev.2005.08.013](https://doi.org/10.1016/j.ympev.2005.08.013).
- Price PW, Clancy KM. 1983.** Patterns in number of helminth parasite species in freshwater fishes. *The Journal of Parasitology* **69**:449–454 DOI [10.2307/3281352](https://doi.org/10.2307/3281352).
- Pugachev ON, Gerasev PI, Gussev AV, Ergens R, Khotenowsky I. 2009.** *Guide to Monogenoidea of freshwater fish of Palaearctic and Amur regions*. Milan: Ledizione-LediPublishing.
- Řehulková E, Mendlová M, Šimková A. 2013.** Two new species of *Cichlidogyrus* (Monogenea: Dactylogyridae) parasitizing the gills of African cichlid fishes (Perciformes) from Senegal: morphometric and molecular characterization. *Parasitology Research* **112**:1399–1410 DOI [10.1007/s00436-013-3291-9](https://doi.org/10.1007/s00436-013-3291-9).
- Salzburger W. 2009.** The interaction of sexually and naturally selected traits in the adaptive radiations of cichlid fishes. *Molecular Ecology* **18**:169–185 DOI [10.1111/j.1365-294X.2008.03981.x](https://doi.org/10.1111/j.1365-294X.2008.03981.x).
- Salzburger W, Mack T, Verheyen E, Meyer A. 2005.** Out of Tanganyika: genesis, explosive speciation, key-innovations and phylogeography of the haplochromine cichlid fishes. *BMC Evolutionary Biology* **5**:17 DOI [10.1186/1471-2148-5-17](https://doi.org/10.1186/1471-2148-5-17).

- Salzburger W, Meyer A, Baric S, Verheyen E, Sturmbauer C. 2002. Phylogeny of the Lake Tanganyika cichlid species flock and its relationship to the Central and East African haplochromine cichlid fish faunas. *Systematic Biology* 51:113–135 DOI 10.1080/106351502753475907.
- Schoelinck C, Cruaud C, Justine J-L. 2012. Are all species of *Pseudorhabdosynochus* strictly host specific?—A molecular study. *Parasitology International* 61:356–359 DOI 10.1016/j.parint.2012.01.009.
- Shorthouse D. 2010. SimpleMapp. Available at <http://www.simplemapp.net>.
- Šimková A, Ondráčková M, Gelnar M, Morand S. 2002. Morphology and coexistence of congeneric ectoparasite species: reinforcement of reproductive isolation? *Biological Journal of the Linnean Society* 76:125–135.
- Šimková A, Plaisance L, Matějusková I, Morand S, Verneau O. 2003. Phylogenetic relationships of the Dactylogyridae Bychowsky, 1933 (Monogenea: Dactylogyridea): the need for the systematic revision of the Ancyrocephalinae Bychowsky, 1937. *Systematic Parasitology* 54:1–11 DOI 10.1023/A:1022133608662.
- Šimková A, Verneau O, Gelnar M, Morand S. 2006. Specificity and specialization of congeneric monogeneans parasitizing cyprinid fish. *Evolution* 60:1023–1037 DOI 10.1111/j.0014-3820.2006.tb01180.x.
- Sinnappah ND, Lim LHS, Rohde K, Tinsley RC, Combes C, Verneau O. 2001. A paedormorphic parasite associated with a neotenic Amphibian host: phylogenetic evidence suggests a revised systematic position for Sphyrnauridae with Anuran and Turtle Polytomatoineans. *Molecular Phylogenetics and Evolution* 18:189–201 DOI 10.1006/mpev.2000.0877.
- Snoeks J. 2000. How well known is the ichthyodiversity of the large East African lakes? *Advances in Ecological Research* 31:17–38 DOI 10.1016/S0065-2504(00)31005-4.
- Takahashi T. 2003. Systematics of Tanganyikan cichlid fishes (Teleostei: Perciformes). *Ichthyological Research* 50:367–382 DOI 10.1007/s10228-003-0181-7.
- Takahashi T. 2014. Greenwoodochromini Takahashi from Lake Tanganyika is a junior synonym of Limnochromini Poll (Perciformes: Cichlidae). *Journal of Fish Biology* 84:929–936 DOI 10.1111/jfb.12309.
- Tamura K, Stecher G, Peterson D, Filipski A, Kumar S. 2013. MEGA6: molecular evolutionary genetics analysis version 6.0. *Molecular Biology and Evolution* 30:2725–2729 DOI 10.1093/molbev/mst197.
- Turner GF. 2007. Adaptive radiation of cichlid fish. *Current Biology* 17:827–831 DOI 10.1016/j.cub.2007.07.026.
- Vanhove MPM, Pariselle A, Van Steenberge M, Raeymaekers JAM, Hablützel PI, Gillardin C, Hellemans B, Breman FC, Koblmüller S, Sturmbauer C, Snoeks J, Volckaert FAM, Huysse T. 2015. Hidden biodiversity in an ancient lake: phylogenetic congruence between Lake Tanganyika trophic cichlids and their monogenean flatworm parasites. *Scientific Reports* 5:13669 DOI 10.1038/srep13669.
- Vanhove MPM, Volckaert FAM, Pariselle A. 2011. Ancyrocephalidae (Monogenea) of Lake Tanganyika: I: four new species of *Cichlidogyrus* from *Ophthalmotilapia*

ventralis (Teleostei: Cichlidae), the first record of this parasite family in the basin. *Zoologia* **28**:253–263 DOI [10.1590/S1984-46702011000200016](https://doi.org/10.1590/S1984-46702011000200016).

Van Steenberge M, Pariselle A, Huyse T, Volckaert FAM, Snoeks J, Vanhove MPM. 2015. Morphology, molecules, and monogenean parasites: an example of an integrative approach to cichlid biodiversity. *PLoS ONE* **10**:e0124474 DOI [10.1371/journal.pone.0124474](https://doi.org/10.1371/journal.pone.0124474).

Vignon M, Pariselle A, Vanhove MPM. 2011. Modularity in attachment organs of African *Cichlidogyrus* (Platyhelminthes: Monogenea: Ancyrocephalidae) reflects phylogeny rather than host specificity or geographic distribution. *Biological Journal of the Linnean Society* **102**:694–706 DOI [10.1111/j.1095-8312.2010.01607.x](https://doi.org/10.1111/j.1095-8312.2010.01607.x).

Ziętara MS, Lumme J. 2002. Speciation by host switch and adaptive radiation in a fish parasite genus *Gyrodactylus* (Monogenea, Gyrodactylidae). *Evolution* **56**:2445–2458 DOI [10.1111/j.0014-3820.2002.tb00170.x](https://doi.org/10.1111/j.0014-3820.2002.tb00170.x).